



World of Stones®
LIVE WITH NATURE



Natural Stone & Cerapave Porcelain Collection
www.worldofstonesusa.com



Exotic Collection - Imperial White

WELCOME

TO OUR LANDSCAPING SUPPLIES BROCHURE

Since 1999, World of Stones has been the brand to trust.

World of Stones USA is a long established brand, exclusively in partnership with independent merchants.

We are proud to be at the cutting edge of hard landscaping product development, bringing exciting new products exclusively to the independent market.

As the luxurious materials market continues to grow in popularity and the demand ever increasing for natural stone and outdoor Cerapave Porcelain, we are continuing to supply exceptional, contemporary selections. Every product has been hand selected and sourced with quality, luxury and individuality in mind after all, we dare to be different!

Our quality and passion does not stop at our product selection but continues through to our customer service and dedication to customer satisfaction.

We, as a climate conscious company, constantly try to accelerate our carbon reduction by introducing environmentally friendly production processes. Every product we sell is of the finest quality and ethically processed, meeting our environmental and social regulations.

So, if you are looking to transform your garden, driveway, or create a seamless indoor-outdoor space then have a look inside at our full range of beautiful natural stone and Cerapave Porcelain products.



Exotic Collection - Castle Grey

CONTENTS

Finishes	6	Ultimate Joint	46
Exotic Collection		Installation Guidelines	
Silverado	8	Natural Stone Paving	47
Imperial White	10	Cerapave Porcelain Paving	48
Castle Grey	11	Sizes & Laying Pattern	49
Premia Collection		General Information	50
Autumn Brown	12		
Castle Grey	14		
Lanier	15		
Cloudy Black	16		
Sierra	18		
Sunset Buff	19		
Castle Grey	20		
Desert Buff	21		
Sunset Buff	22		
Autumn Brown	23		
Cerapave Porcelain Collection			
Travertine	24		
Silver Grey	25		
Cappucino Beige	25		
Cerapave Porcelain Accessories			
Silver Grey	26		
Travertine	26		
Finishing Accessories			
Tumbled Pavers	30		
Sills Stones	32		
Pier Caps	34		
Treads	36		
Steps Slabs	38		
Copings Pool Series	40		
Stepping Stones	42		
Decorative Pebbles	44		

Featured on the front cover: the all-new Silverado Paving from our Exotic Collection—crafted for elegance and precision.

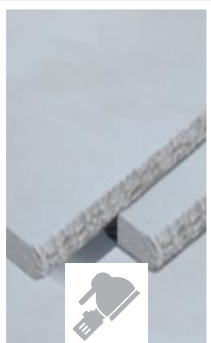


SURFACE FINISHES



FLAMED

A blowtorch is used to heat the stone at a very high temperature and rapidly cooled simultaneously to achieve a unique desired texture.



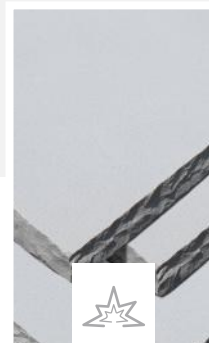
HONED

We achieve a honed finish by using an abrasive to bring out the reflection of stone, creating a consistent surface that is stunning and smooth.



NATURAL

Natural stone is split along the natural lines. This results in surfaces that are riven and undulating in texture.



SHOTBLASTED

This complex multistep process involves honing the product and peppering the units with shots (small beads of steel) fired at a high velocity with compressed air that results in the stippled surface.



HAMMER BRUSH

A brush repeatedly runs over the shotblasted stone surface to achieve a shotblasted but soft finish.



Above are the standard finishes and quick reference symbols in our catalog.

EDGE FINISHES



BULLNOSED

This process can be done by both machine and hand, making the edge of the product rounded, perfect for steps.



HANDSPLIT

The stone is split manually with a hammer & chisel along the edges. Split faces run inwards towards the stone face.



RECTIFIED

Rectification is carried out by mechanically cutting the Cerapave Porcelain slab to a predefined size and making the edges regular.



ROCK FACED

The stone is hand-crafted along the edges to create a textured, 3D look that runs perpendicular along the direction of the stone.



SAWN

A sawn edge is achieved by using a machine to saw the side of the paving, thus creating a smooth, straight edge.



TUMBLED

Stone is tumbled in a machine (similar to a cement mixer) which gives the product a smooth surface with edges that have natural aged look.



Keep an eye out for the symbols mentioned above throughout the brochure.

EXOTIC COLLECTION

Sawn Edges

We offer an extensive choice of natural stones to fit every mood and purpose. Our Exotic Collection includes modern and classic natural stone pavers with authentic finishes. They are not only stunning but also deliver high durability that can withstand the test of time.

SIZES LENGTH X WIDTH	SINGLE SIZE PACK	PROJECT PACK
12" X 12"		9
24" X 12"		13
24" X 24"	40	13
36" X 24"	28	13

Single size packs are available only for products marked with (*).

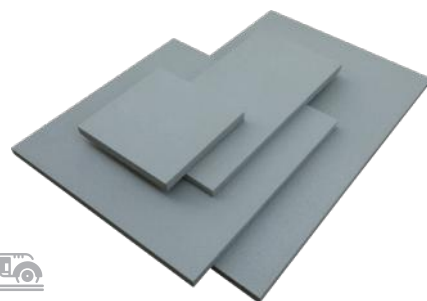
PRODUCT	SIZE	SKU
Castle Grey	Project Pack	SAFG-1299
Imperial White	Project Pack	SAFG-1300
Silverado	24" X 24"	SAFG-3984
Silverado	36" X 24"	SAFG-3986
Silverado	Project Pack	SAFG-4072



THE PERFECT PARTNER

For a perfect pairing, complement **Silverado Paving** with **Silverado Treads**, thoughtfully designed to seamlessly enhance both style and functionality. For more details, refer to pages 36-37.





CASTLE GREY



IMPERIAL WHITE



***SILVERADO**

Silverado is also available in 24" X 24" and 24" X 36" singles.



Exotic Collection - Imperial White



THE PERFECT PARTNER

The Ultimate Joint: Universal Paving Joint Compound ensures weather-resistant, crack-proof paving joints with long-lasting durability. Its innovative formula allows quick, seamless, and smooth application, making it ideal for hassle-free paving. (refer to page no. 46)



Exotic Collection - Castle Grey



THE PERFECT PARTNER

Create exquisite garden features by combining the **Castle Grey Paving** from our Exotic Collection with **Castle Grey Treads** (refer to page no. 36-37), **Copings** (refer to page no. 40-41), **Steps** (refer to page no. 38-39), **Sills** (refer to page no. 32-33), and **Pier Caps** (refer to page no. 34-35).

PREMIA COLLECTION

Hand Split Edges

From a cozy patio to a luxurious outdoor living space, the hand-split pavers from our Premia Collection will suit any kind of outdoor decor. They give a cool, neutral, and balanced effect to any landscaping project while enhancing its overall charm.

SIZES LENGTH X WIDTH	SINGLE SIZE PACK	PROJECT PACK
12" X 12"		9
24" X 12"	85	13
24" X 24"	40	13
36" X 24"	28	13

Products marked with (*) are only available in Project pack size.

PRODUCT	SIZE	SKU
Autumn Brown	24" X 12"	SAFG-1292
Autumn Brown	24" X 24"	SAFG-1288
Autumn Brown	36" X 24"	SAFG-1284
Autumn Brown	Project Pack	SAFG-1280
Castle Grey	24" X 12"	SAFG-1289
Castle Grey	24" X 24"	SAFG-1285
Castle Grey	36" X 24"	SAFG-1281
Castle Grey	Project Pack	SAFG-1277
Desert Buff	24" X 12"	SAFG-1290
Desert Buff	24" X 24"	SAFG-1286
Desert Buff	36" X 24"	SAFG-1282
Desert Buff	Project Pack	SAFG-1278
Lanier	Project Pack	SAFG-2651
Sunset Buff	24" X 12"	SAFG-1291
Sunset Buff	24" X 24"	SAFG-1287
Sunset Buff	36" X 24"	SAFG-1283
Sunset Buff	Project Pack	SAFG-1279





Premia Collection - Hand Split - Autumn Brown



AUTUMN BROWN



CASTLE GREY



DESERT BUFF



SUNSET BUFF



LANIER*



Premia Collection - Hand Split - Castle Grey



THE PERFECT PARTNER

This product is also available in **Stepping Stones** (refer to page no. 42-43), **Treads** (refer to page no. 36-37), **Copings** (refer to page no. 40-41), **Steps** (refer to page no. 38-39), **Sills** (refer to page no. 32-33), and **Pier Caps** (refer to page no. 34-35).



Premia Collection - Hand Split - Lanier



THE PERFECT PARTNER

This product will create a wonderful medley with **Pier Caps** (refer to page no. 34-35) and **Treads** (refer to page no. 36-37) and **Stepping Stones** (refer to page no. 42-43).

PREMIA COLLECTION

Sawn Edges

Bring a clean, modern look to your flooring with sawn edge pavers from our Premia Collection. Available in six exciting colors, these pavers can deliver a pristine look and an aged appearance. They bring aesthetic beauty and functionality to any outdoor living space.

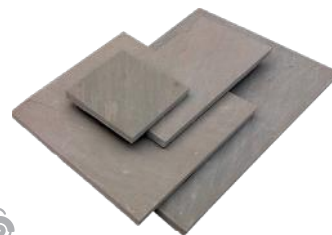
SIZES LENGTH X WIDTH	PROJECT PACK
12" X 12"	9
24" X 12"	13
24" X 24"	13
36" X 24"	13

PRODUCT	SIZE	SKU
Autumn Brown	Project Pack	SAFG-1720
Castle Grey	Project Pack	SAFG-1272
Cloudy Black	Project Pack	SAFG-1273
Desert Buff	Project Pack	SAFG-1274
Sierra	Project Pack	SAFG-1276
Sunset Buff	Project Pack	SAFG-1275





Premia Collection - Cloudy Black



AUTUMN BROWN



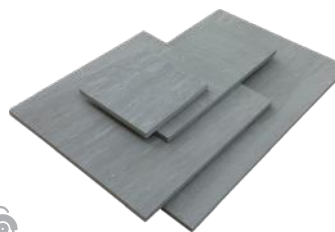
CASTLE GREY



CLOUDY BLACK



DESERT BUFF



SIERRA



SUNSET BUFF



Premia Collection - Sierra



THE PERFECT PARTNER

You can also use our range of **Treads** available in the same color (refer to page no. 36-37) alongside the Sierra paving from our Premia Collection. It will also create a great combination with **Sills** (refer to page no. 32-33) and **Pier Caps** (refer to page no. 34-35).



Premia Collection - Sunset Buff

**THE PERFECT PARTNER**

This product will create a wonderful medley with **Pier Caps** (refer to page no. 34-35) and **Treads** (refer to page no. 36-37) and **Stepping Stones** (refer to page no. 42-43).



Premia Collection - Castle Grey



THE PERFECT PARTNER

This product is also available in **hand-split edges** (refer to page no. 12), **Stepping Stones** (refer to page no. 42-43), **Treads** (refer to page no. 36-37), **Copings** (refer to page no. 40-41), **Steps** (refer to page no. 38-39), **Sills** (refer to page no. 32-33), and **Pier Caps** (refer to page no. 34-35).



Premia Collection - Desert Buff

**THE PERFECT PARTNER**

This product will create a wonderful medley with **Treads** (refer to page no. 36-37) and **Stepping Stones** (refer to page no. 42-43).



Premia Collection - Sunset Buff



THE PERFECT PARTNER

Will create a perfect combination with **Sunset Buff Tumbled Pavers** (refer to page no. 30-31), **Sills** (refer to page no. 32-33), **Pier Caps** (refer to page no. 34-35), **Treads** (refer to page no. 36-37), **Steps** (refer to page no. 38-39), **Copings** (refer to page no. 40-41), and **Stepping Stones** (refer to page no. 42-43).



Premia Collection - Autumn Brown

**THE PERFECT PARTNER**

This product will create a wonderful medley with **Treads** (refer to page no. 36-37) and **Stepping Stones** (refer to page no. 42-43).

CERAPAVE PORCELAIN COLLECTION

Our Outdoor Cerapave Porcelain slabs blend timeless colors and textures to evoke the look of natural stones. These beautiful and durable slabs are available in various sizes, allowing for seamless coordination of design elements. Our Cerapave Porcelain slabs can be laid with thin joints that create a desirable modern appearance in your garden or patio.

SIZES LENGTH X WIDTH	SINGLE SIZE PACK	PROJECT PACK
12" X 12"		9
24" X 12"		13
24" X 24"	68	13
36" X 24"		13

PRODUCT	SIZE	SKU
Travertine	24" X 24"	CC-0003
Travertine	Project Pack	CC-0018
Silver Grey	24" X 24"	CC-0002
Silver Grey	Project Pack	CC-0005
Cappuccino Beige	24" X 24"	CC-0017
Cappuccino Beige	Project Pack	CC-0004



Cerapave Porcelain Collection - Travertine

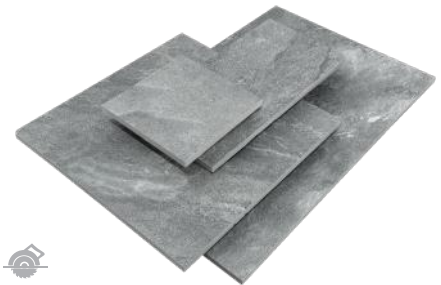




Cerapave Porcelain Collection - Silver Grey



TRAVERTINE



SILVER GREY



CAPPUCCINO BEIGE



Cerapave Porcelain Collection - Cappuccino Beige

CERAPAVE PORCELAIN ACCESSORIES

Give your pool area the finishing touch it deserves with our exceptional range of Porcelain Copings. This reasonably priced copings collection features neutral colors that create a soothing and unwinding environment for your pool area. In addition to having a lovely appearance, our collection requires little maintenance and is stain-resistant, helping it maintain its original color over time. It's an excellent choice for homeowners who want both functionality and a contemporary look.



SILVER GREY



TRAVERTINE

SIZES

LENGTH X WIDTH X HEIGHT

12" X 24" X 0.8"

PRODUCT	SIZE	SKU
Silver Grey	12" X 24" X 0.8"	CC-0019
Travertine	12" X 24" X 0.8"	CC-0020





Finishing Accessories - Silver Grey Coping

FINISHING ACCESSORIES

Heighten the appearance of any patio, driveway or front entrance with our range of finishing accessories. They add the final touch to vertical elements and can also provide a platform for existing garden components.





Treads - Castle Grey

TUMBLLED PAVERS

Tumbled Pavers reflect the design hues of age-old pavers with their timeless warmth and beauty. Our Tumbled Pavers have Natural Riven Surface with sawn edges with an aged appearance that can be used very effectively in traditional garden designs but is equally at home in more contemporary schemes.

SIZES LENGTH X WIDTH	PROJECT PACK
6" X 12"	180
6" X 9"	180
6" X 12"	90

PRODUCT	SIZE	SKU
Castle Grey	Project Pack	SAFG-2707
Sunset Buff	Project Pack	SAFG-2708



Tumbled Pavers - Sunset Buff





CASTLE GREY



SUNSET BUFF

Tumbled Pavers - Castle Grey

SILLS STONES

Natural stone sills are a great eye-catcher. They add an unusual sense of beauty and offer great durability to your window frame.

SIZE
LENGTH X WIDTH X THICKNESS

36" X 2.5" X 2"

PRODUCT	SIZE	SKU
Castle Grey	36" X 2.5" X 2"	SAFG-1334
Sunset Buff	36" X 2.5" X 2"	SAFG-1335
Sierra	36" X 2.5" X 2"	SAFG-1592

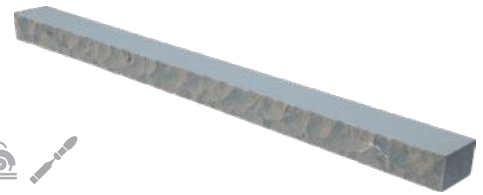


Sills - Castle Grey





Sills - Sunset Buff



CASTLE GREY



SUNSET BUFF



SIERRA

Finish : Surface Suede, Front long edge rock faced & three edges sawn

PIER CAPS

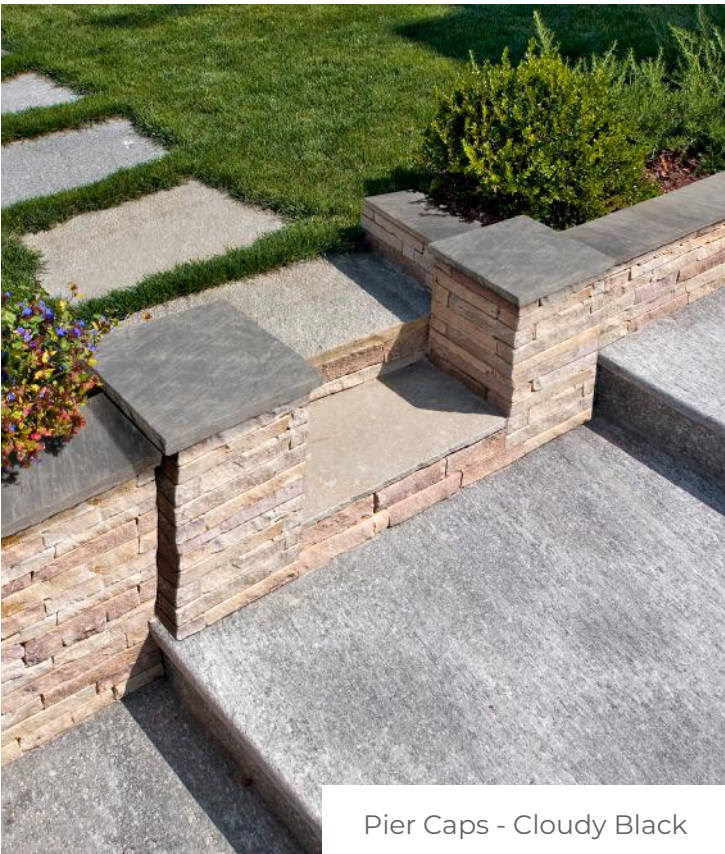
Pier Caps are available in a wide selection of colors, finishes, and sizes. They add a finishing touch to bare entryway columns or fence posts. To enhance the area, post lights can be mounted on the stone pillar or column capstones.

SIZES
LENGTH X WIDTH X THICKNESS

- 24" X 24" X 2"
- 28" X 28" X 2"

*Cloudy Black is only available in size 24" X 24" X 2"

PRODUCT	SIZE	SKU
Castle Grey	24" X 24" X 2"	SAFG-2577
Castle Grey	28" X 28" X 2"	SAFG-2578
Sunset Buff	24" X 24" X 2"	SAFG-2583
Sunset Buff	28" X 28" X 2"	SAFG-2584
Cloudy Black	24" X 24" X 2"	SAFG-3409



Pier Caps - Cloudy Black





Pier Caps - Sunset Buff



CASTLE GREY



SUNSET BUFF



CLOUDY BLACK*

TREADS

Incorporating natural stone treads on steps is the perfect way to add warmth and character to any elevation change. Our full range of Treads is available in 9 fascinating colors with different textures and sizes. These treads can also be used as wall caps to make a perfect design statement in your backyard, garden, or patio.

PRODUCT	SIZE	SKU
Castle Grey	48" X 12" X 2"	SAFG-1301
Castle Grey	48" X 14" X 2"	SAFG-1308
Castle Grey	48" X 18" X 2"	SAFG-1315
Castle Grey	48" X 24" X 2"	SAFG-1322
Castle Grey	72" X 12" X 2"	SAFG-1303
Castle Grey	72" X 14" X 2"	SAFG-1310
Castle Grey	72" X 18" X 2"	SAFG-1317
Castle Grey	72" X 24" X 2"	SAFG-1324
Castle Grey	96" X 12" X 2"	SAFG-1306
Castle Grey	96" X 14" X 2"	SAFG-1313
Castle Grey	96" X 18" X 2"	SAFG-1320
Castle Grey	96" X 24" X 2"	SAFG-1327
Sunset Buff	48" X 12" X 2"	SAFG-1302
Sunset Buff	48" X 14" X 2"	SAFG-1309
Sunset Buff	48" X 18" X 2"	SAFG-1316
Sunset Buff	48" X 24" X 2"	SAFG-1323
Sunset Buff	72" X 12" X 2"	SAFG-1304
Sunset Buff	72" X 14" X 2"	SAFG-1311
Sunset Buff	72" X 18" X 2"	SAFG-1318
Sunset Buff	72" X 24" X 2"	SAFG-1325
Sunset Buff	96" X 12" X 2"	SAFG-1307
Sunset Buff	96" X 14" X 2"	SAFG-1314
Sunset Buff	96" X 18" X 2"	SAFG-1321
Sunset Buff	96" X 24" X 2"	SAFG-1328
Autumn Brown	72" X 12" X 2"	SAFG-1305
Autumn Brown	72" X 14" X 2"	SAFG-1312
Autumn Brown	72" X 18" X 2"	SAFG-1319
Autumn Brown	72" X 24" X 2"	SAFG-1326
Lanier	72" X 12" X 2"	SAFG-2716
Sierra	72" X 12" X 2"	SAFG-3370
Cloudy Black	72" X 12" X 2"	SAFG-3371
Imperial White	72" X 12" X 2"	SAFG-1329
Imperial White	72" X 14" X 2"	SAFG-1330
Imperial White	72" X 18" X 2"	SAFG-1331
Silverado (Sandblasted)	72" X 12" X 2"	SAFG-3989
Silverado (Natural)	72" X 12" X 2"	SAFG-4075





Treads - Castle Grey



CASTLE GREY



SUNSET BUFF

SIZES	
LENGTH X WIDTH X THICKNESS	
48" X 12" X 2"	
48" X 14" X 2"	
48" X 18" X 2"	
48" X 24" X 2"	
72" X 12" X 2"	
72" X 14" X 2"	
72" X 18" X 2"	
72" X 24" X 2"	
96" X 12" X 2"	
96" X 14" X 2"	
96" X 18" X 2"	
96" X 24" X 2"	



AUTUMN BROWN

SIZES	
LENGTH X WIDTH X THICKNESS	
72" X 12" X 2"	
72" X 14" X 2"	
72" X 18" X 2"	
72" X 24" X 2"	



LANIER



SIERRA



CLOUDY BLACK

SIZE	
LENGTH X WIDTH X THICKNESS	
72" X 12" X 2"	



IMPERIAL WHITE

SIZES	
LENGTH X WIDTH X THICKNESS	
72" X 12" X 2"	
72" X 14" X 2"	
72" X 18" X 2"	



SILVERADO



SIZES

LENGTH X WIDTH X THICKNESS	
72" X 12" X 2"	

Finish : Top Natural, edges rock faced

STEPS SLABS

Add finishing touches to your design with our range of sandstone steps. They add elegance to your garden or patio design by complementing existing elements present in the space.

SIZE
LENGTH X WIDTH X THICKNESS

48" X 16" X 6"

PRODUCT	SIZE	SKU
Castle Grey - Hollowed	48" X 16" X 6"	SAFG-2717
Sunset Buff - Hollowed	48" X 16" X 6"	SAFG-2718



Steps - Sunset Buff





Steps - Castle Grey



CASTLE GREY - HOLLOWED



SUNSET BUFF - HOLLOWED

Finish : Natural Finish,
Hollowed, all edges rock faced

COPINGS

POOL SERIES

Our natural stone copings can give your pool a modern and more contemporary appearance. They have a practical and visual edge that enhances the overall look of your property.

SIZE
LENGTH X WIDTH X THICKNESS

24" X 14" X 2"

PRODUCT	SIZE	SKU
Castle Grey	24" X 14" X 2"	SAFG-1340
Imperial White	24" X 14" X 2"	SAFG-2706
Sunset Buff	24" X 14" X 2"	SAFG-1341

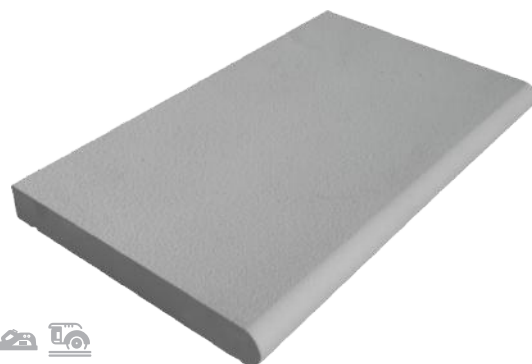


Copings - Imperial White





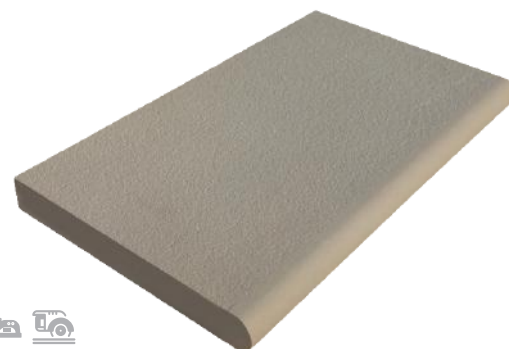
Copings - Castle Grey



CASTLE GREY



IMPERIAL WHITE



SUNSET BUFF

Finish : Surface Suede, 1 long edge
bullnosed 3 edges sawn

STEPPING STONES

Stepping Stones are a great way to add a wonderful distinctive feature to any garden. They offer a practical solution to help you walk in the garden and add visual interest to the space. Our range of stepping stones is perfect to create the contemporary garden look you have been dreaming of.

SIZE		
LENGTH (RANDOM) X WIDTH (RANDOM) X THICKNESS		
24" X 18" X 1"		
PRODUCT	SIZE	SKU
Autumn Brown	24" X 18" X 1"	SAFG-1749
Castle Grey	24" X 18" X 1"	SAFG-1338
Sunset Buff	24" X 18" X 1"	SAFG-1339



Stepping Stones - Castle Grey





Stepping Stones - Autumn Brown



AUTUMN BROWN



CASTLE GREY



SUNSET BUFF

Finish : Surface Suede, 1 long edge
bullnosed 3 edges sawn

DECORATIVE PEBBLES

Natural stone pebbles can easily blend in with their surroundings, making them suitable for any design or style concept. They are the greatest landscaping material for gardens and other outdoor spaces. Pebbles are visually pleasing to the eye and provide a classy and timeless look to your space.

SIZES	
*	0.75" - 1.75"
#	1" - 2.5"
°	2.0" - 4.0"

The Size marked with (*) is only available in Rainbow Decorative Pebbles.

The size marked with (#) is available in all colors except Lakeside Decorative Pebbles.

The size marked with (°) is only available in Lakeside Decorative Pebbles.

PRODUCT	SIZE	SKU
Atlantic	1" - 2.5"	SAFG-3357
Blanco	1" - 2.5"	SAFG-3360
Cheaspeake	1" - 2.5"	SAFG-3358
Copper	1" - 2.5"	SAFG-3365
Golden Yellow	1" - 2.5"	SAFG-3359
Lakeside	2.0" - 4.0"	SAFG-3364
Midnight	1" - 2.5"	SAFG-3366
Rainbow	1" - 2.5"	SAFG-3363
Rainbow	0.75" - 1.75"	SAFG-3362



Decorative Pebbles - Golden Yellow





Decorative Pebbles - Blanco



ATLANTIC



BLANCO



CHEASPEAKE



COPPER



GOLDEN YELLOW



LAKE SIDE®



MIDNIGHT



RAINBOW*

ULTIMATE

Paving Joint Compound

AVAILABLE
NOW



Available in **Three Colors**



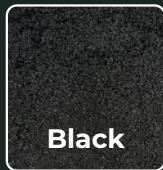
Buff

SAFG-4086



Grey

SAFG-4087



Black

SAFG-4088



APPLICATION IN
ALL WEATHER CONDITIONS

- ✓ Quick & Easy Application
- ✓ Application in all Weather Conditions
- ✓ Weed & Plant Resistant
- ✓ Quick Usage Guide Inside
- ✓ Crack & Shrink Resistant



Scan the QR
Code to connect
with us.

855.967.1872

WWW.WORLDOFSTONESUSA.COM
INFO@WORLDOFSTONESUSA.COM



World of Stones®
LIVE WITH NATURE

Installation Guidelines For Natural Stone Paving

1. CHECK YOUR PRODUCT

Before any work is carried out, each piece of natural stone should be inspected, both wet and dry, prior to laying as pieces will vary. No returns can be accepted once the product is installed, so it is important to confirm you are happy with your product before proceeding. When work begins, ensure the area is cleared of all vegetation and debris.

Then, ideally using a scaled drawing of your planned area, you can start plot pointing by marking out the space using pegs and a string line.

2. PREPARE YOUR BASE

- Remove topsoil as from the area to be paved.
- Base materials may consist of granular materials (crushed aggregates) to be placed in a 6" layer. The thickness of base will vary with type of soil subgrade and climate, colder climates may require thicker bases. Soil conditions may vary (*).
- The sub-base layer should be thoroughly compacted with enough water to aid compaction, increase density and control dust. Install Geotextile fabric to separate the subsoil from the base, as required by design.
- Once the desired compaction has been achieved place a 1" bedding layer of loose sand on top, ensuring that the base is level by using a string line or screening board (*).
- Patios should be laid with slope to drain off rain water. This slope should be at least 1/4" drop for every foot away from the house.

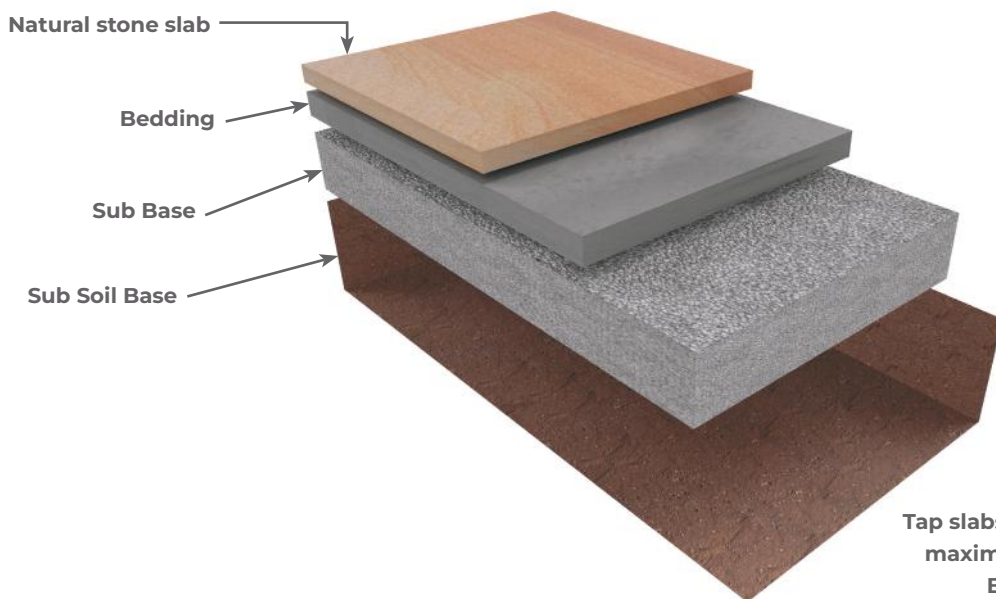
3. LAY YOUR SLABS

- Choose the design that you wish to lay, then starting in a corner carefully place the first slab in position and gently tap down using a rubber mallet.
- The bedding layer of loose concrete sand allows for leveling the surface of each slab which may vary from piece to piece due to their texture. (*)
- Slabs may be laid with up to 1/2" joints and filled with Polymeric/Resin Sand on completion of installation. Install edge restraints.

When using Polymeric Sands or Joint Sands; adhere to manufactures recommendations and guidelines (*).

We recommend ULTIMATE Universal All weather Paving Joint Compound.

(*) Base type and bedding techniques may vary such as use of hybrid base; plastic grids and/or foam base materials. Bedding material may consist of hybrid system or open graded material (small coarse aggregate). Adhere to manufactures recommendation, guidelines, and local soil conditions.



Tap slabs down to ensure maximum contact with Bedding material.



Do not clean with Muriatic Acid / No Limpiar con acido muriatico

Under no circumstances should a mechanical compactor be used directly on the slab surface.

Bajo ninguna circunstancia debiera usarse la compactadora mecan/ca directamente sobre la superficie de la piedra.

Installation Guidelines

For Cerapave Porcelain Paving

1. CHECK YOUR PRODUCT

Ensure that you check your product before laying – we recommend dry laying a random selection of your slabs (from more than one pallet where applicable) to ensure that you are satisfied with the colour variation in the slabs. Claims or returns based on colour variation will not be accepted once the product has been laid. Ensure that whilst working with outdoor paving slabs that they are rested on wooden battens to prevent any edge chipping.

2. PREPARE YOUR BASE

Prior to installation, all necessary ground work should be completed. This includes ensuring there is a sub-base of at least 50 – 100mm thick of type 1 material (hard-core) which has been sufficiently compacted down, with a suitable water drainage fall (a fall of 1:60 is usually adequate).

3. PRIME YOUR SLABS

Apply a Slurry Primer mixed using cement powder, water and an outdoor based SBR bonding agent to a creamy consistency to the back of each slab before it is laid to help the paving adhere to the bed.

Paving slabs may need to be handled by 2 people (in particular the larger sized slabs). When applying slurry primer, ensure that you rest the slab on wooden battens to prevent any chipping.

Before applying the slurry primer, using a stiff brush, brush the back of the slab to clean off the magnesium oxide releasing agents, this will create the bond of the slurry primer to the Cerapave Porcelain paving. Paint each slab with slurry primer as you lay them, not all at once before you begin laying. The slurry primer on the back of the slab must still be wet when it is laid down, therefore you should not prime all slabs first before you start laying. This will ensure that the slab adheres to the mortar bed correctly. If any slurry primer is on the face-up side of the slab, immediately wash away the residue with water as you work.

4. USE A FULL BED OF MORTAR

Just like natural stone products, World of Stones USA Cerapave Porcelain paving must be laid on a full wet bed of mortar. We recommend a mixture of a moist consistency (rather than runny) with approx. 4:1 sharp sand to cement.



Please remember that with all World of Stones USA products – the spot laying method is not suitable!

5. LAY YOUR SLABS

It is essential that each slab is tapped down to ensure as much of the slab as possible comes into contact with the mortar. When laying your project, ensure that you mix slabs to achieve an overall blended appearance. While the finishes of Cerapave Porcelain paving have less surface variation than natural stone, they are still designed with a level of variation to add a range of texture to their surface. If within the selection of slabs you encounter any repeat patterns, we suggest that you rotate slabs 90/180 degrees in order to minimise the appearance of repetition (this may be more prevalent in slabs which have a more extensive surface pattern).

6. CUTTING CERAPAVE PORCELAIN PAVING

Cerapave Porcelain paving can be cut with a disc cutter fitted with a suitable-for-porcelain paving diamond blade (this must be a petrol disc cutter as you must feed the disc with water to cut). However, for neater and more accurate cutting, we recommend using a suitable water-fed slab bridge saw. Ensure that appropriate protective clothing is worn while operating machinery.

7. CHECK YOUR JOINTS

Allow for 10-12mm +/- approx joints when laying the slabs. We suggest an outdoor jointing compound (suitable for porcelain paving) should be used with our Cerapave Porcelain paving products – please speak to your merchant or landscaper for the most appropriate jointing compound for your project. As stated, World of Stones USA Cerapave Porcelain paving products are not designed to be butt jointed.

8. IMPORTANT – CLEAN THE JOB

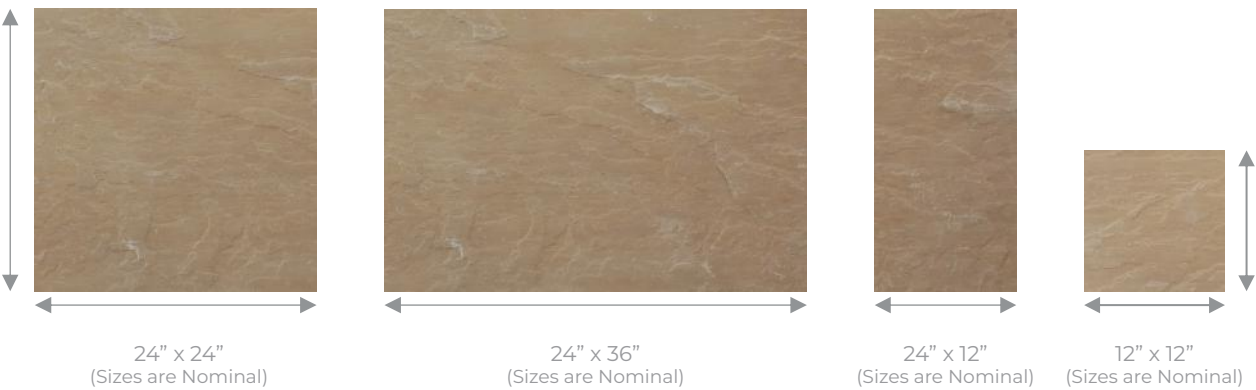
It is particularly important to work cleanly when laying Cerapave Porcelain paving, both during and after installation. Once the job is completed, additional cleaning may be required if any residue remains, particularly from jointing compounds. Ensure that the jointing compound has set sufficiently and then clean the slabs with a suitable residue remover (depending upon which jointing compound has been used). Any residue left over from the laying process must be removed as soon as possible – failure to do so may result in staining on the surface of the slabs. If your Cerapave Porcelain paving has been laid in conjunction with any natural stone, ensure that the porcelain paving cleaner/residue remover you are using does not contain any acid and check they are suitable for porcelain paving.

Sizes & Laying Pattern

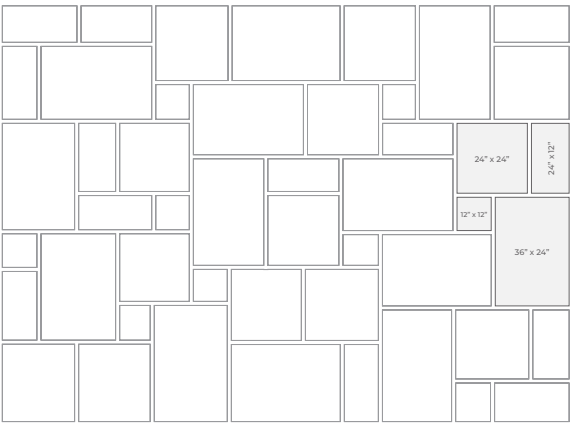
SAWN EDGES



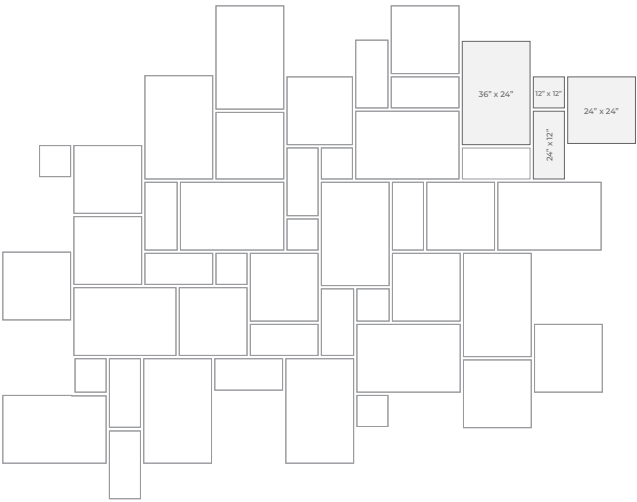
HAND SPLIT EDGES



LAYING PATTERNS



STANDARD



REPEATABLE

General Information

COLOR

Every effort has been made to give true representation of color in all photographs. Due to the natural variation in the natural stone products, each stone product will have its own unique character and appearance. It is important to view a range of samples to acknowledge the authentic diversity in colors, texture, veining, and markings.

DIMENSIONS

All dimensions are nominal and are subject to manufacturing tolerance.

MAINTENANCE & SEALERS

Regular maintenance is required to keep the overall appearance of the product in pristine condition. Kindly note some natural stone pieces may contain small iron content and when in contact with water can oxidize causing rust marks to the surface of paving. There are numerous proprietary stain/rust removal products on the market that can be used with Natural Stone. When using these products always follow manufacturer's application, instructions, and safety advice. When using cleaner/sealers consult with manufacturers recommendation and applications methods.

HEALTH & SAFETY

Some Products in our range are heavy. It is suggested that items which are 25 Kg (55 lbs.) or those that are awkward in shape should be handled by more than one person or by suitable lifting equipment . It is suggested that work gloves, eye protection and respiratory protection are used whenever appropriate.

INSTALLATION GUIDELINES

Visit www.worldofstonesusa.com for further information.





World of Stones®

LIVE WITH NATURE

🌐 www.worldofstonesusa.com
✉ info@worldofstonesusa.com
☎ 855.967.1872



Scan
the QR
Code to
connect
with us.

follow us on



© COPYRIGHT WORLD OF STONES USA

This publication should not be reproduced in any form without
prior written agreement of World Of Stones USA.