

Airfields // Highways // Off-Highways // Civils & Maintenance

# MOTORSPORTS LINING & CIVILS

Innovative Solutions for Circuits,  
Test Tracks & Motorsport Infrastructure



Safely Marking  
The Way Ahead  
[jointline.co.uk](http://jointline.co.uk)

Every circuit and project is unique. We work with each client to tailor the broad range of line marking, civils and surface preparation services that we offer to deliver the best solution for the programme of works.

# WORKING SAFELY ON THE WORLDS FASTEST CIRCUITS.

At Jointline, we specialise in high-performance line marking solutions for motorsport circuits, pit lanes, and surrounding infrastructure. With years of expertise, we deliver durable, high-visibility markings that enhance safety, optimise track performance, and meet the exacting standards of the industry.

Beyond painted systems, we offer a comprehensive range of motorsport surface solutions, including surface construction and repairs, overbanding, and temporary event markings. Our team works closely with clients to provide bespoke solutions that balance aesthetics, durability, and performance, ensuring that every marking meets both functional and regulatory requirements.

We also provide surface preparation and removal services, ensuring old or temporary markings, rubber or fuel spills are efficiently removed without damaging the track surface. Using advanced hydroblasting and mechanical techniques, we create a clean, smooth foundation for new applications, maintaining track integrity and safety standards.

With a commitment to precision and quality, Jointline continues to support the motorsport industry with reliable, high-performance solutions tailored to the demands of every circuit.







# INDEX

About Jointline Limited	2
Circuit Line Marking	4
Painted Systems	6
Surface Construction & Repairs	8
Joint Sealing	10
Overbanding	12
Thermoplastic Line Marking	14
Hydroblasting Services	16
Jet Drying Solutions	18
Quality, Safety, Health and Environment (QSHE)	20
Social Value	22
Work with us	24

# CIRCUIT LINE MARKING

Jointline has vast experience in circuit line marking, and we continue to be a market leader for the circuits across the globe.

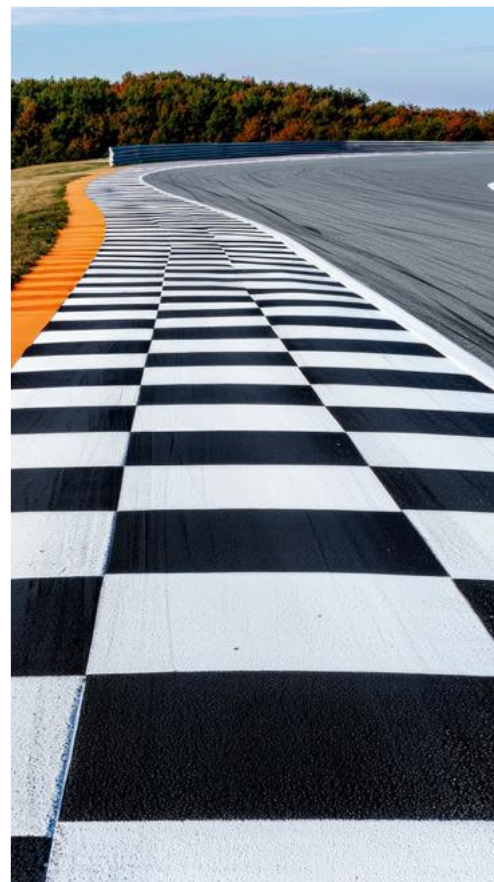
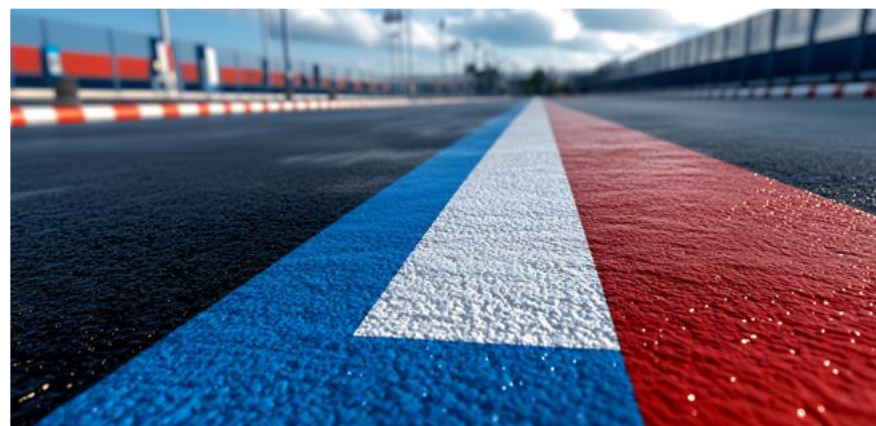
Line marking is an essential element of the circuit infrastructure, from full circuit markings to delineation of pit lane markings, or identifying any potential hazards. Jointline's experienced staff have the knowledge and expertise, along with state of the art equipment to implement surface markings which comply with strict regulations.

We use FIM homologated paints that meet the specifications set by the FIM (Fédération Internationale de Motocyclisme) for use on race tracks. These paints are used for track markings, kerbs, and starting grids. .

We invest heavily in the most up-to-date equipment to ensure we are capable of applying large volumes of material within the restricted windows of opportunity when required. Key to the implementation of new layouts or changes on track Jointline has a range of removal techniques that can be used that comply with necessary requirements.









# PAINTED SYSTEMS

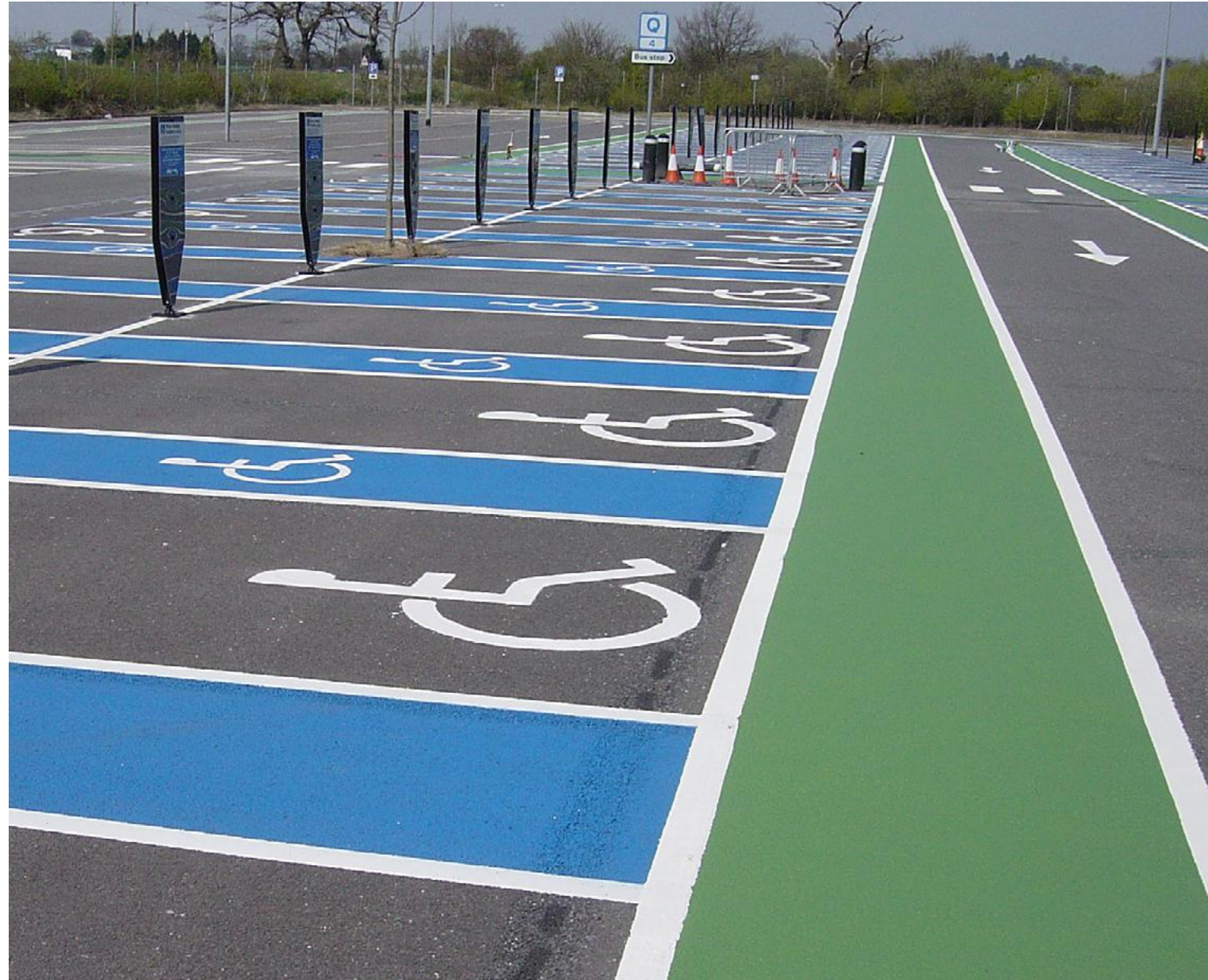
Jointline has the extensive knowledge to deliver the best solution for your needs.

We offer a range of high-performance painted systems designed for use on tracks, pit lanes, and surrounding facility infrastructure, including car parks. Each system is carefully selected in collaboration with our clients, considering factors such as budget, application area, and required durability to ensure the best possible results.

- > **Epoxy Paint and Chlorinated Rubber Paint:**  
Epoxy Paint and Chlorinated rubber paint can both be spray or hand applied. They are both relatively quick curing, can be applied in various colours and onto a range of surfaces.
- > **MMA (Methyl Methacrylate) Line Markings:**  
MMA (Methyl Methacrylate) is a 2 part cold applied resin. MMA cures very quickly so the site can return to normal service very quickly after application. It is an extremely durable product and as such is ideal for use in very high stress locations where extreme wear is expected such as circuits, pit lanes and access roads with very heavy traffic. It can be applied by hand or machine.
- > **Two Pack Epoxy Line Markings:**  
Two Pack Epoxy is a two component product consisting of one part epoxy resin and one part polyamine hardener which are mixed, along with desired pigment prior to application. Because of the resin content 2 pack epoxy is extremely hard wearing and can withstand harsh chemical spills. As a result two pack epoxy paint is suitable for use where heavy traffic will occur such as garages and car parks.
- > **Anti-Slip Paint Systems:**  
Depending on the setting of your job you can increase the safety for its users by mixing aggregate into the paint when line marking to create an Anti-Slip paint system. This serves to create a rough surface finish to the line and increases the anti-slip characteristics of the paint. This is particularly useful in settings with heavy pedestrian footfall and also on ramped surfaces to increase the grip of the surface for support vehicles.
- > **Water Based Systems:**  
Water based acrylic line marking paint penetrates deeply into the substrate creating a virtually seamless finish and can withstand intense wear. It is relatively fast drying, low odour and is available in a range of colours.









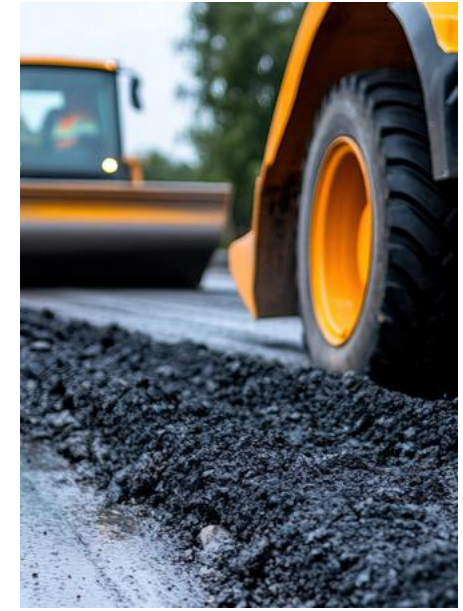
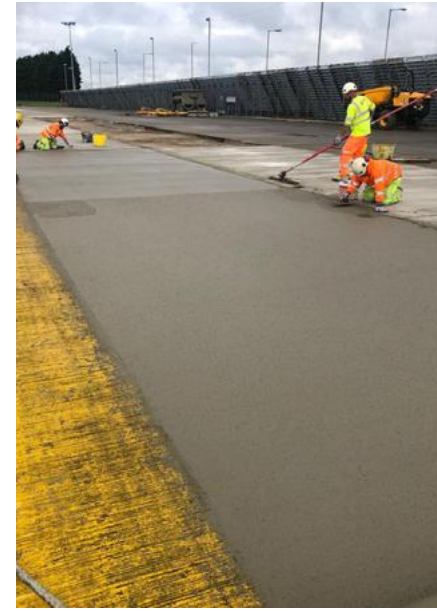


# **SURFACE CONSTRUCTION & REPAIRS**

Jointline are the motorsport specialist for surface construction and repair.







Motorsport surfaces must withstand extreme forces, high-speed impacts, and constant wear while maintaining optimal grip and safety. Jointline is a trusted specialist in track construction, rehabilitation, and surface reinforcement, ensuring race circuits, pit lanes, and paddock areas meet the highest performance standards.

With decades of expertise, Jointline delivers engineered surfacing solutions designed to enhance durability, reduce maintenance, and improve race conditions. Whether constructing a new surface or restoring an existing one, our advanced techniques and materials keep motorsport facilities in peak condition.

Our Motorsport Surfacing & Rehabilitation Services Include:

> **Engineered Surfacing & Repairs:**

- > Precision resurfacing to restore smoothness and optimise grip.
- > Specialist surface treatments to enhance skid resistance and tyre interaction.
- > Durable repair techniques to prevent cracking and surface degradation.
- > Seamless track blending to ensure consistent performance across resurfaced areas.

> **Glass Grid Reinforcement:**

To combat reflective cracking in asphalt, particularly in high-impact zones such as braking areas, corners, and starting grids, Jointline employs glass grid reinforcement. This advanced reinforcement technology strengthens asphalt surfaces, extending lifespan and minimising costly repairs. By combining expert construction, advanced materials, and precision repair techniques, Jointline ensures motorsport surfaces remain at their best—delivering speed, safety, and reliability on every lap.



# JOINT SEALING

## Durable Track Protection for Peak Performance

In motorsport environments, track integrity is paramount. Properly sealed construction joints in asphalt or concrete surfaces help maintain durability by allowing for expansion and contraction while preventing water ingress and joint failure.

At Jointline, we offer specialist joint sealing solutions designed for high-performance surfaces:

- > **Hot Applied N1 and N2 Sealants:**  
N1 and N2 sealants provide durable protection against water and debris. These BS EN14188-1-compliant sealants expand and contract with temperature changes, ensuring long-lasting performance. With rapid application and curing, they minimise downtime, keeping racing circuits and surrounding infrastructure in peak condition.
- > **Cold Applied Fuel Resistant Joint Sealants:**  
For areas exposed to fuel spills—such as pit lanes, paddocks, and service zones—our cold-applied fuel-resistant sealants offer superior protection. Resistant to fuel, they safeguard joints from degradation while maintaining flexibility to accommodate surface movement.

As well as simply sealing joints Jointline have specialist saw cutting equipment to:

- > Create joints in new/green concrete to enable the surface to deal with expansion and contraction
- > Chase out or existing concrete cracks before sealing them or overbanding them
- > Reform existing joints to effectively reapply sealant.









# OVERBANDING

Jointline can protect your surfaces with our HAPAS approved materials.

Overbanding is a process used to seal cracks on the track, road or surface which may be:

- > Spontaneous from wear and tear and require repair; or
- > Where works have been carried out and the joint between the old surface and new surface need sealing

Overbanding these cracks is vital and serves to prevent damage and surface fretting from water, dirt or spillage penetration. Overbanding effectively seals the joint and overlaps the two sides of the joint up to 200mm. This ensures that nothing can get into the crack and further degrade the surface.

Overbanding these cracks is vital and serves to prevent:

- > Using hot applied Bituminous material to seal and overband the crack
- > Using cold applied resins

The method chosen will depend on the project characteristics; the type of materials either side of the crack to be overbanded and how the surface is used i.e. car park versus race track.

For circuit use Jointline use SAFETRACK® overbanding. A HAPAS approved liquid, cold-applied, fast curing overbanding system based on GCP Applied Technologies unique ESSELAC advanced resin technology.

SAFETRACK® is used on motorsport surfaces due to its quick application, long service life, non-reflective & skid resistant finish and rapid cure that allows the track to be returned to service in minimal time.

Jointline take health & safety very seriously and both of their overbanding methods are HAPAS approved, with high skid resistance values necessary to conform to requirements. This helps prevent any road and track users from slipping or skidding on the overbanded area particularly in wet conditions.







# THERMOPLASTIC LINE MARKING

Jointline are the market leaders in the application of thermoplastic markings.

Thermoplastic Line Marking involves the heating of raw thermoplastic binder with the desired colour pigment until it becomes liquified and able to be shaped onto the surface in either line or symbol form. Ballotini (glass beads) can be applied to the markings to enhance the retro-reflectivity, so they can easily be seen at night through reflection from car head lights; this also can assist in the antislip nature of the product.

Thermoplastic is available in various colours, levels of luminance, skid resistance and reflectivity. Hot applied thermoplastic line markings are extremely durable and long lasting; they are the UK's preferred road marking material.

Some of the ways in which thermoplastic line marking can be applied are:

- > **Screed Application:**  
The screed application is achieved by pouring the thermoplastic material through a heated screed mould or 'line marking pram' shoe. By selecting different sized moulds or shoe, the material can be applied at different widths to suit. Screed application is typically tailored to low output usage, such as hand applied items such as pedestrian crossings, arrows and lettering or to areas where the bigger truck mounted application is not practical.

- > **Extrusion Application:**  
Surface degradation can have a number of negative effects for the road user. The Extrusion application uses our purpose built, self propelled vehicles and highly trained staff to apply hot thermoplastic through a gate opening. This produces a consistent line of pre-determined width and depth onto the prepared road surface. Glass beads, which create a reflective quality, are automatically applied in this one-pass process. The Extrusion Marking system is perfect for high output application such as on major roadways and for traffic lane delineation.

Thermoplastic Line Marking is perfect for:

- > **Paddock:** Clearly defined bays, team areas, and operational zones for enhanced safety and efficiency.
- > **Access Roads & Parking Areas:** Durable markings for traffic flow, visitor parking, and staff-only zones.
- > **Visitor Car Parks:** Designated parking spaces, directional arrows, and pedestrian walkways for a seamless visitor experience.
- > **Service & Logistics Areas:** Defined routes for maintenance vehicles, fuel stations, and loading zones.









# HYDROBLASTING SERVICES

## Precision Removal, Maximum Efficiency

Jointline's Hydroblasting Services deliver high-performance surface preparation, retexturing, and marking removal using cutting-edge high-pressure water jetting technology.

This eco-friendly method effectively removes race markings, rubber deposits, oil spills, and surface contaminants without damaging the underlying track surface—ensuring optimal grip and performance.

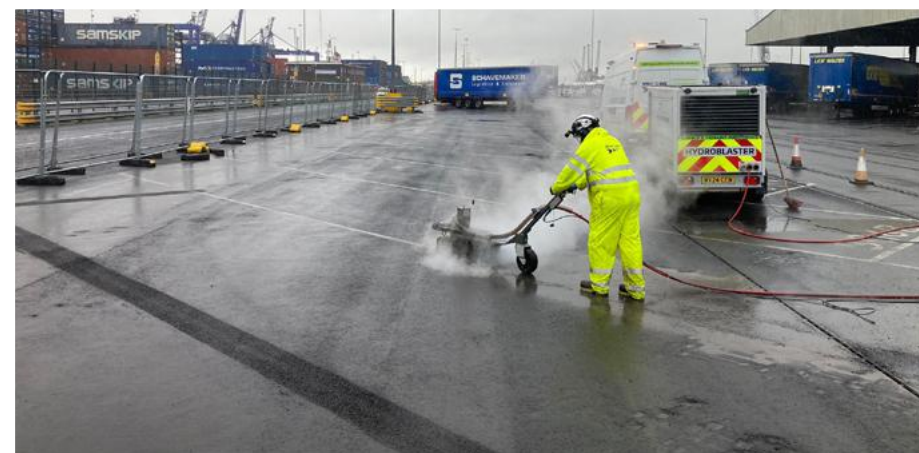
### ***Key Benefits of Hydroblasting:***

- > **Preserves Track Integrity:** Non-abrasive method prevents surface damage
- > **Eco-Friendly Solution:** Uses pure water, eliminating harmful chemicals.
- > **Rapid & Efficient:** Quickly removes rubber build-up, skid marks, and old track markings..
- > **Fuel & Oil Residue Removal:** Effectively removes hazardous fuel residues, improving safety.
- > **Minimal Disruption:** Fast-drying process allows for quick reopening of areas.
- > **Versatile Application:** Suitable for racetracks, paddocks, pit lanes, service roads and public areas.

With a specialist fleet of advanced hydroblasting equipment, Jointline provides precision removal and surface retexturing to maintain peak track conditions—reducing downtime and keeping your motorsport or test facility race-ready







# JET DRYING SOLUTIONS

Rapid Drying,  
Uninterrupted Performance

Jointline's Jet Drying Solutions deliver a fast, efficient method for surface preparation and drying, crucial for high-performance motorsport environments. Whether it's track marking, surface repairs, or maintenance, our advanced jet dryers effectively remove moisture, debris, and ice, ensuring optimal adhesion and faster project completion in all weather conditions.

Designed for racetracks, pit lanes, paddocks, and surrounding infrastructure, jet drying minimises downtime and keeps motorsport and test venues in peak condition.

## **Key Benefits of Jet Drying:**

- > **All-Weather Reliability:** Effective in wet and cold conditions, ensuring year-round usability.
- > **Rapid Turnaround:** Accelerates drying times, reducing delays.
- > **Superior Adhesion:** Enhances bonding of paints, tapes, and coatings for long-lasting results.
- > **Versatile Application:** Suitable for track surfaces, paddock areas, and public spaces.
- > **Minimal Disruption:** Keeps critical infrastructure operational with minimal downtime.







# QUALITY, SAFETY, HEALTH & ENVIRONMENT

Jointline places paramount importance on Quality, Safety, Health, and Environment (QSHE) across all operations. Our QSHE policies are designed to ensure that every project is executed with the highest standards of safety and environmental stewardship.

We are committed to:

- > **Quality:**  
Adhering to industry best practices and standards, ensuring that our projects meet or exceed client expectations. Our certifications and accreditations, including BBA and ISO standards, reflect our dedication to maintaining excellence.
- > **Safety:**  
Promoting a safety-led culture where all employees are empowered to check, challenge, and change unsafe practices. Our safety protocols are designed to protect the public or those local to our schemes as well as our own workforce, ensuring a secure working environment.
- > **Health:**  
Implementing robust health management systems to protect the well-being of our workforce. We prioritise health and safety through regular training, risk assessments, and proactive initiatives.
- > **Environment:**  
Minimising environmental impact through sustainable practices and responsible resource management. Our projects incorporate environmentally friendly materials and methods, reducing our carbon footprint and promoting ecological balance.







# SOCIAL VALUE

We believe in making a positive impact on the communities we serve by fostering economic, social, and environmental well-being.

- > **Community Engagement:**  
Actively involving local communities in our projects to ensure that their needs and concerns are addressed. We work closely with community stakeholders to enhance public spaces and support local development.
- > **Local Employment:**  
Prioritising the hiring of local talent and suppliers to boost the local economy and create job opportunities. We are committed to providing training and apprenticeship programs to develop skills within the community.
- > **Sustainable Practices:**  
Implementing environmentally sustainable practices in all our projects to protect and enhance the natural environment. We focus on reducing waste, conserving resources, and using eco-friendly materials.
- > **Charitable Support:**  
Supporting local charities and community initiatives through donations, sponsorships, and volunteer efforts. We encourage our employees to participate in charitable activities and give back to the community.
- > **Education and Outreach:**  
Partnering with local schools and educational institutions to promote STEM (Science, Technology, Engineering, and Mathematics) education. We offer site visits, workshops, and work experience to inspire the next generation of engineers and civil professionals.



We are dedicated to creating social value through our operations and projects.





# WORK WITH US

At Jointline,  
we are always  
looking to  
collaborate with  
clients, partners,  
and talented  
professionals  
who share our  
commitment to  
excellence and  
innovation.

Working with us means becoming part of a culture that values quality, safety, and sustainability.

> **Clients:**

We provide bespoke, end-to-end solutions tailored to meet your specific project needs. Our multidisciplinary expertise ensures that we can handle all aspects of your project, delivering exceptional results on time and within budget.

> **Partners:**

We believe in building strong, collaborative relationships with our partners. Whether you are a supplier, subcontractor, or consultant, we work together to achieve shared goals and deliver superior outcomes.

> **People:**

Join our dynamic team and be a part of a company that values professional growth and development. We offer competitive benefits, ongoing training, and opportunities for career advancement. Explore our current job openings and apply to become part of the Jointline family.





For more information on working with us, please contact us at:

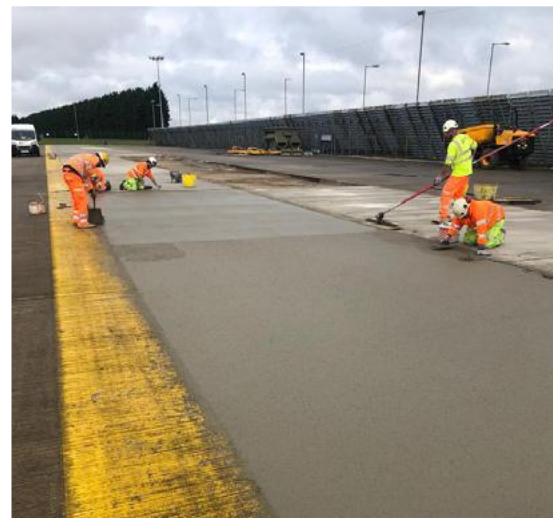
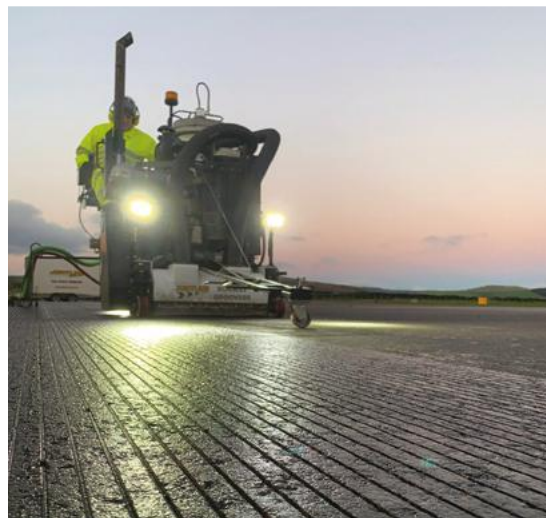
Jointline Limited  
Airfield View, Camp Road  
Witham St Hughs  
Lincoln, LN6 9TW

01522 868 636  
[info@jointline.co.uk](mailto:info@jointline.co.uk)  
[jointline.co.uk](http://jointline.co.uk)

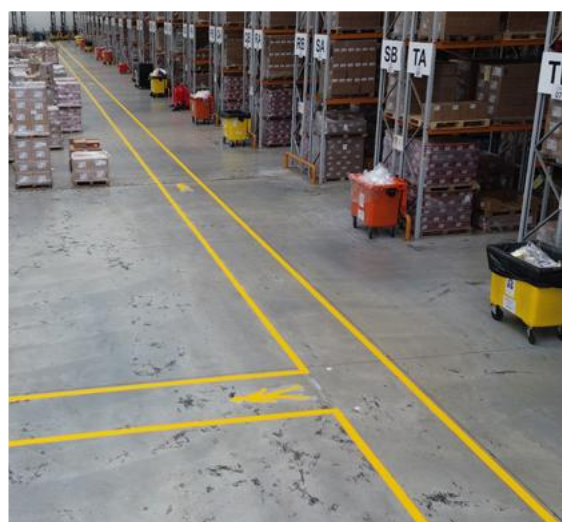


*Get in Touch!*













Safely Marking  
The Way Ahead  
[jointline.co.uk](https://jointline.co.uk)

Midlands Depot: Airfield View, Camp Road, Witham St Hughs, Lincoln, LN6 9TW - 01522 868636  
Northern Depot: Spartan Road, Low Moor, Bradford, BD12 0RY - 01274 736 504  
[info@jointline.co.uk](mailto:info@jointline.co.uk) | <https://jointline.co.uk>

