

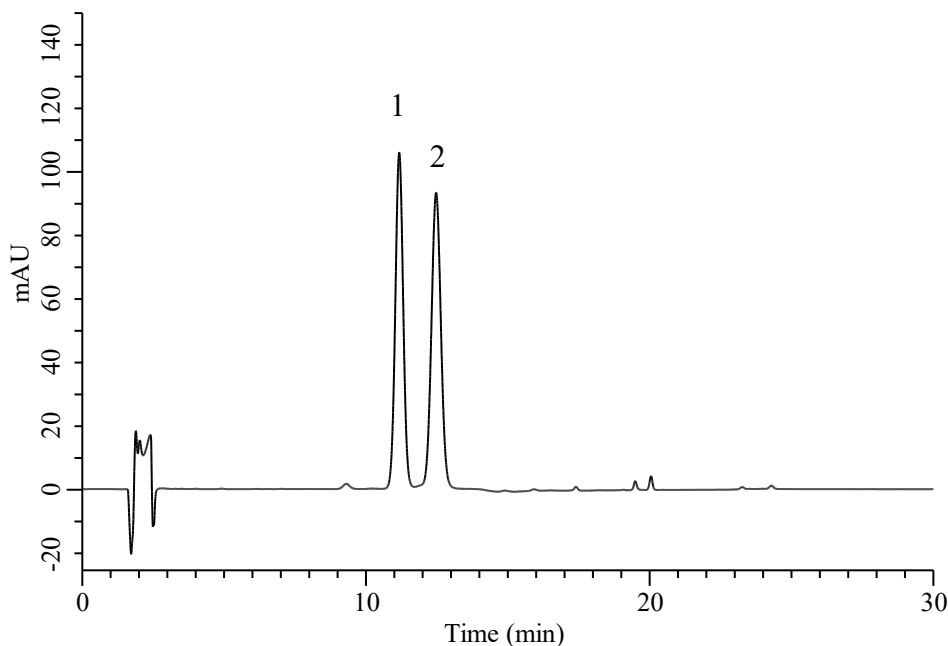
InertSearch™ for LC

Inertsil® Applications

Analysis of Naringin and Hesperidin

(Under the Condition of food additive analysis method in food)

Data No. LB854-7111



Conditions

System : Chromaster HPLC system (HITACHI)
Column : InertSustain AQ-C18 (GL Sciences Inc.)
(5 μ m, 150 x 4.6 mm I.D.)

Column Cat. No. : 5020-89730

Eluent : A) 10 mmol/L TFA in $\text{CH}_3\text{CN}/\text{H}_2\text{O}$ = 20/80, v/v
B) 10 mmol/L TFA in $\text{CH}_3\text{CN}/\text{H}_2\text{O}$ = 40/60, v/v

Analyte:

1. Naringin 50 μ g/mL
2. Hesperidin 50 μ g/mL

Time (min)	A (vol %)	B (vol %)
0.0	100	0
10.0	100	0
20.0	0	100
30.0	0	100
30.1	100	0
40.0	100	0

Flow Rate : 1.0 mL/min
Col. Temp. : 40 °C
Detection : UV 285 nm
Injection Vol. : 20 μ L
Sample : Standard