

SUPERLATCH SURFACE MOUNTED RAPIDRESET CODE LATCH

Specification Sheet SLDSRR

FEATURES

- A marine grade digital keypad with a lever handle.
- Change the simply and quickly without removing from the gate in just 10 seconds.
- Auto-latching: Close the gate and the latch catches onto the strike plate. To open the gate from the outside enter the code and turn the handle, from the inside simply twist the latch.
- No power needed: High quality digital keypad ensures long lasting durability.
- Internal mechanism is easily reversible for left and right hand gates.

PRODUCT DETAILS

Product code	Description
SLDSRR	Superlatch digital with shroud



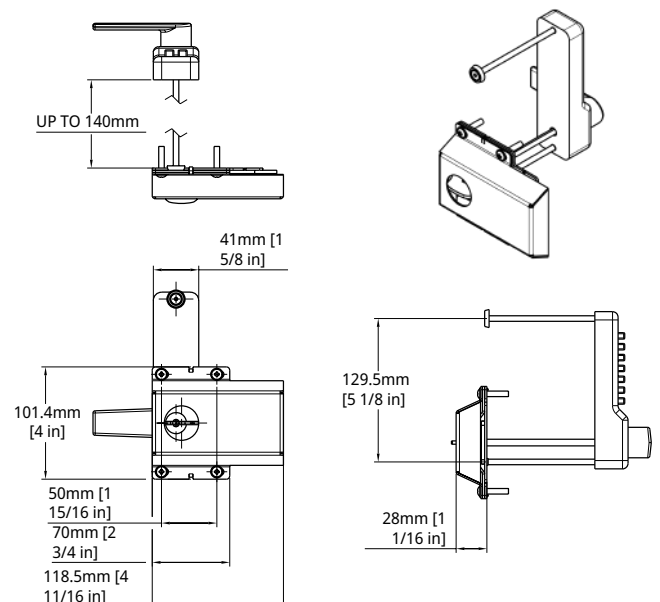
INCLUDED IN THE BOX

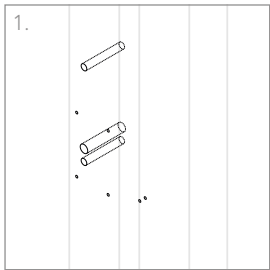
- Fixings for wooden gates
- Drilling guide
- Keypad fixings with extenders
- Rubber keypad gasket

INSTALLATION

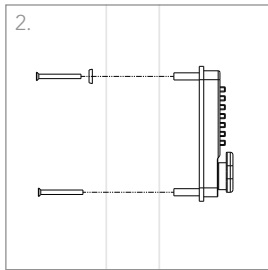
1. Drill 2 x 9mm (3/8") diameter holes at 130mm (25/64) centres in a vertical line (suggested position 58mm (2-1/4") from the edge of the gate).
2. Drill a 3rd hole 12mm (1/2") diameter, 18mm (47/64") up from the bottom hole.
3. Fix the rubber gasket and outside keypad using 2 x M5 countersunk screws, using the black domed washer under the top screw. The silver extension screws can be used for thicker gates, or the screws may need to be cut down for smaller thickness's. (Please note – for anything over 75mm (3") thickness you will need to order the extension kit, product code SLDSE140).
4. Insert a rectangular spindle through the gate and fully into the keypad. The spindle should project in between 10 and 15mm (3/8" - 19/32") from the inside face of the gate. The spindle can be cut if the supplied lengths do not fall within these tolerances.
5. Assemble the Superlatch backing plate, latch plate and shroud. The backing plate is reversible for left and right hand gates, ensure the latch moves vertically up and drops back down. A spring is supplied which is recommended to fit to ensure the latch will always return.
6. Fit the lock assembly over the spindle and fix with 4 screws.
7. Fix the keep plate to the gate post so it engages with the latch.

DRILLING GUIDE SUPPLIED WITH THE LOCK

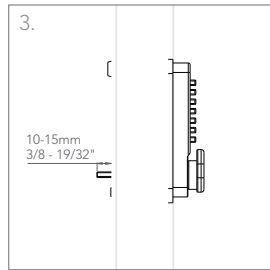




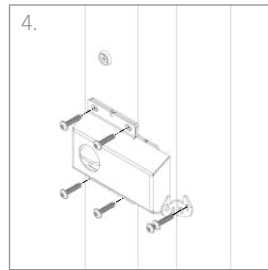
1. Drill 3 holes through for the keypad using template below. Pilot drill screw holes if necessary.



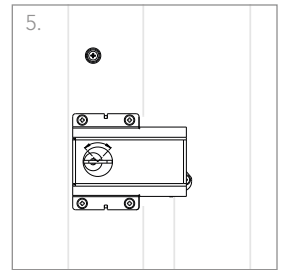
2. Fit outside keypad using screws and extenders if required.



3. Insert the spindle. Cut to length if it protrudes more than the dimension shown.



4. Screw the lock on.



5. Test latch to ensure smooth operation.

DRILL 9mm THRU
[3/8"]

SUGGESTED GATE
EDGE POSITION

SUPPLIED SCREWS HERE

DRILL 12mm THRU
[1/2"]

DRILL 9mm THRU
[3/8"]

SUPPLIED SCREWS HERE

SUGGESTED GATE
EDGE POSITION

DRILL 9mm THRU
[3/8"]

SUPPLIED SCREWS HERE

