

CSR REPORT

# Arisma Charitable Trust



**Arisma**  
CHARITABLE TRUST

A CSR Initiative of Aristo Pharmaceuticals Private Limited Group of Companies

# Index

|   |    |
|---|----|
| Trustee's Message   | 4  |
| Empowering Communities. Nurturing Dreams.<br>Cultivating Hope | 5  |
| Milestones that Matter  | 6  |
| Arisma at a Glance  | 6  |
| About Arisma  | 9  |
| CSR at Arisma   | 10 |
| Our Mission, Vision, Value and Objective                      | 11 |
| The Modus Operandi  | 16 |
| CSR Activities Snapshot                                       | 20 |
| Championing Social Responsibility (CSR) Initiatives           | 33 |





# Trustee's Message



**Late Dr Mahendra Prasad**, promoter for Aristo Pharmaceuticals Private Limited and its associate company, established Arisma Charitable Trust in 2015 with the objective of building a society where the basic needs of every individual, like food, shelter, health, education, entertainment, etc., are met and equality, liberty, and security are assured.

I believe that the population of our country living in rural/slums and underdeveloped areas need more services than just sympathy. In this regard, Arisma Charitable Trust has taken strong steps to provide holistic development. We cannot help ourselves without helping others. Arisma Charitable Trust dreams of a poverty-free India where each & every member of the family has healthy food to eat, clean water to drink, access to basic health facilities, and education for all.

I would like to thank our staff, community, and related stakeholders for their involvement in various innovative programs, such as the installation of handpumps, solar street lights, setting up of solar grids, construction of sanitary blocks in schools and communities, stationary material support to schools, and many more such projects for the betterment of the public at large. I convey my warm regards to all for their unconditional effort and support.

**Wishing you all good health and happiness.**

**Shri Umesh Sharma**



# Empowering Communities. Nurturing Dreams. Cultivating Hope.

The growth of communities reflects the growth of a nation as a whole. As India continues its empowering growth trajectory, the need for companies like us to support this visionary growth is imminent.

At Arisma Charitable Trust, we are committed to delivering high-value corporate social responsibility that aligns with our vision of 'Creating a social environment in which integrated development of the marginalized and excluded community takes place.'

Our belief is rooted in our efforts to create a society where equality, liberty, and security are not just ideals but everyday realities. In addition, we are dedicated to working towards a future where the basic needs of every individual, such as food, shelter, health, education, entertainment, and more, are met.

We strive to go beyond just philanthropic promises and aim to have a meaningful impact through community service. With a more holistic approach, we hope to nurture the dreams of millions and build a sustainable future for them. We aim to do this by actively promoting education, community development, and healthcare. We work towards fostering a cooperative culture where mutual collaboration is a way of life.

At Arisma Charitable Trust, CSR is not just a responsibility; it's a commitment to building a society that thrives on empowerment, dreams, and hope.

# Milestones That Matter

**Installed  
3,300**

Solar Street Lights

**Facilitated  
595**

Hathia Handpumps



Ambulance Donation  
to Red Cross



Installation of  
Solar off grid in  
Educational Institution

**5000+  
students**

Distributed School Bags in

**41 Schools**

Construction of Community  
Hall in Village

| Activity  | Our work so far |       |         |        |  | Total Number                    | Outreach<br>(Tentative) |
|---|-----------------|-------|---------|--------|--|---------------------------------|-------------------------|
|   | District        | Block | Village | School |  |                                 |                         |
| Toilet block construction (Sanitation_ Toilet)                    | 2               | 11    | 19      | 21     |  | 21 in school and 2 in community | 14013                   |
| Green & Renewable Energy (Solar light Installation)street         | 4               | 10    | 128     | 6      |  | 3300                            | 138250                  |
| Installation of Solar – Off Grid at BBM College, Okari, Jehanabad | 1               | 1     | 1       | 1      |  | 1(25KVA)                        | 5000                    |
| Water Resource Development (Handpumps)installation                | 4               | 12    | 143     | 0      |  | 595                             | 109,190                 |
| RO water Unit Installation in school                              | 1               | -     | -       | 5      |  | 5                               | 4000                    |
| Set up–Smart Classes in school                                    | 1               | -     | -       | 7      |  | 5                               | 7700                    |
| Distribution of School Bags                                       | 4               | 10    | 26      | 44     |  | 15602                           | 15602                   |
| Stationary Material Support to Mumbai Slum Children               | 1               | 1     | 1       | -      |  | 2                               | 80                      |
| Distribution of Teachers Bag in School                            | 4               | 10    | 26      | 44     |  | 529                             | 529                     |
| Sports Kids Distribution  | 4               | 10    | 26      | 44     |  | 38                              | 18,500                  |
| Furniture support to School                                       | 1               | 1     | 2       | 2      |  | 2                               | 6000                    |
| Set up of Science lab in College                                  | 1               | 1     | -       | 1      |  | 1                               | 4000                    |
| Skill Development (NIIT Foundation)                               | 1               | 8     | 52      |        |  | 580                             | 730                     |
| Support for Construction of Auditorium                            | 1               | 1     | -       | 1      |  | 1                               | 2500                    |
| Support (Gaya ji Seva Bharti )Ngo for setup of Hostel             | 1               | -     |         |        |  |                                 | 50                      |
| Renovation of Govindpur Library                                   | 1               | -     | -       | -      |  | 1                               | 4500                    |

|   |   |   |   |   |    |               |
|---|---|---|---|---|----|---------------|
| Support for National Theatre Festival-Imagination (Art & Culture) | 1 | 1 | 1 | - | -  | 1750          |
| Donated Ambulance and Computers to Red Cross, Jehanabad.(Health)  | 1 | - | - | - | 1  | 3000          |
| Community Hall(Rural Infra Development)                           | 3 | - | - | - | -  | 10000         |
| CCTV Installation in Community(rural Development)                 | 1 | 3 | 3 | - | 72 | 2 lakh(appox) |
| Medical treatment support - 1 child, 2 adults                     | 2 |   |   |   | 3  | 3             |
| Disaster response support to Sikkim                               | 1 | - | - | - | -  | -             |
| Support to Hospital for purchase of essential medical equipment   | 1 |   |   |   |    |               |
| Support for Construction of Girl Hostel                           | 1 | 1 | - | 2 | -  | 250           |
| Underground Drainage; sakorda Village                             | 1 | 1 | 1 |   |    | 3000          |





# About Arisma

*Arisma Charitable Trust is the dedicated CSR arm of the Aristo Pharmaceuticals Private Limited group of companies, which includes Mapra Laboratories Private Limited, Aristo Laboratories Private Limited, and Aristo Pharmaceuticals Private Limited.*

*At Arisma, we are committed to using our CSR initiatives to kickstart a new positive impact on society. Our activities engage in community development, ethical social practices, and sustainability. We have a holistic approach to creating a healthy balance between growth and societal well-being.*

*Through partnerships with non-profit organisations and active involvement, the trust fosters a culture of social consciousness.*



# CSR At Arisma

Arisma Charitable Trust has worked dedicatedly toward the betterment of society as a whole. our CSR activity takes our zest to empower and impact marginalized communities even further.

Arisma Charitable Trust founded in 2015, by Dr. Mahendra Prasad, who was the key driving force behind Aristo Pharmaceuticals Private Limited Group of Companies. The overarching objective of the trust is to contribute to the establishment of a society where the fundamental needs of every individual—encompassing provisions such as food, shelter, health, education, and are met entertainment. The fundamentals of equality, liberty, and security lie at the center of our dedication to building a way of life that is rooted in cooperative culture. Since its inception, Arisma Charitable Trust has been actively involved in a myriad of social welfare activities dedicated to promoting the well-being of the

marginalized segments of Society. Through these initiatives, the Trust endeavors to provide equitable growth opportunities, fostering inclusivity and sustainable development.

Arisma Charitable Trust is a functioning and active social arm that collaborates with domain experts, NGOs, government organizations, and more to create social impact. This collaborative effort is directed towards the implementation of socially impactful initiatives in accordance with Schedule VII of the Companies Act 2013. The commitment to social responsibility is ingrained in Arisma's ethos, reflecting a dedication to uplifting Society through purposeful and strategic initiatives.



## Mission

Evolving and promoting a family-centered approach in the development of the marginalized and excluded.



## Vision

Creating a social environment in which holistic development of the marginalized and excluded community takes place.



## Value

Our Values are  
sustainability, Inclusive  
Development  
Empowerment



## Objective

- To promote accessibility towards safe drinking water and sanitation.
- To promote literacy through adult literacy, child literacy, etc.
- To promote social integration in the rural areas and implement community development programs.
- To provide relief in natural calamities such as disasters, droughts, etc.
- To provide support for meals and groceries for marginalized groups.
- To promote reliable, and renewable energy.
- To promote holistic health & wellbeing in communities.

# Arisma CSR Activities Snapshot





# Delivering Impact Through



## Health & Hygiene:

Our trust is committed to improving health and hygiene standards in communities through awareness programs and sanitation initiatives to empower basic healthcare and sanitation needs. In addition, it aims to deliver the basic dignity every individual deserves.



## Disaster Response:

In times of crisis, our company swiftly mobilizes resources for disaster response, providing relief, rehabilitation, and long-term support to affected communities, fostering resilience and recovery.



## Education & Livelihood:

Our efforts are focused on empowering the youth and adults through skill development and adult education programs. This aims to enable them to seek opportunities to secure sustainable livelihoods. We are committed to fostering social well-being by partnering with government funds, supporting public initiatives aligned with our vision, and contributing to national development goals.



### Rural Development:

Dedicated to rural upliftment, our CSR initiatives focus on holistic rural development, addressing infrastructure, healthcare, education, and livelihood needs, empowering rural communities, and enhancing their quality of life.



### Slum Development:

Addressing urban challenges, we engage in the upliftment of slums by offering essential services, infrastructure such as toilets, and skill development opportunities, aiming to uplift the living standards of marginalized urban populations.



### University Support:

Education lies at the crux of a developed nation; we believe in promoting education, collaborating with universities, providing infrastructure, and working towards fostering a conducive environment for learning, growth, and academic excellence.



### Water Resource Development:

We are here to manage and optimize water resources development activities to meet societal and environmental needs. The installation of hand pumps to ensure free-flowing, safe water availability. The aim is to maximize social benefits while ensuring sustainability.

# The Modus Operandi

Our clearly defined CSR objectives act as the blueprint for designing a meticulous plan of action to ensure maximum impact. We begin by identifying key areas where useful intervention can have a lasting impact on marginalized sections of our community.

Our vision acts as the overarching guiding compass that ensures we direct our efforts towards health and hygiene, education and livelihood, empowerment of marginalized populations, green initiatives, heritage, art and culture preservation, and more.

## Our Grievance Mechanism

Arisma Charitable Trust works vehemently to uphold the highest standards of ethics, compliance, and due diligence in all our CSR activities. We have a robust, well-structured auditing and monitoring mechanism in place to govern our engagements with the various external partners and stakeholders with whom we collaborate. The Company's CSR governance mechanism is the backbone of all its CSR implementation activities. It acts as a cornerstone for the effective implementation of our framework.

We adhere to strategic alignment, transparent decision-making, and accountability to fulfill our social responsibility commitments with integrity and precision, thus delivering sustainable impacts.

## MONITORING AND EVALUATION

Continual improvement of our CSR initiatives demands periodic evaluation. This is done through

1. Periodic reviews
2. Regular field visits
3. Third-Party Audits
4. Periodical reporting to senior management

Our in-house CSR committees carefully assess if our work is on track with the annual action plan, preferably on a quarterly basis but not less than twice a year.





# Arisma Charitable Trust CSR Snapshot

| S. No | Name of the Project   | Implementation Partner  | Location   | Summary of the Project  |
|-------|---|-------------------------|--|---|
| 1     | Installation & Construction of Public Toilets at Schools & Public places under the Sanitation segment.  | Arisma Charitable Trust | Jehanabad Nalanda district of Bihar                      | Our initiative covered 21 schools across 11 blocks in Jehanabad and Nalanda districts, impacting around 14013 people in 19 villages. We aimed to support the Swachh Bharat Mission and promote cleanliness while combating diseases due to open defecation. We aimed to promote civilized waste management practices for a healthier, sustainable community   |
| 2     | Installation of 3300 Solar Street Light in 5 different phases in different Blocks of Jehanabad & Nalanda, Bihar                                     | Arisma Charitable Trust | Jehanabad, Nalanda, Sheikhpura, Arwal district of Bihar  | As part of this project, we installed 3300 solar streetlights in four phases, covering eight blocks in Jehanabad, Nalanda, Sheikhpura, Arwal district of Bihar These lights were installed in 242 locations across 128 villages, benefiting 138250 individuals. Our main objective was to promote the use of green energy and reduce dependence on traditional electricity sources while providing lighting to underprivileged areas.   |
| 3     | Installation & Construction of 595 Hathia Handpumps at different identified public locations in Jehanabad & Nalanda districts, Bihar and Sheikhpura | Arisma Charitable Trust | Jehanabad district of Bihar                              | Under this project, 595 handpumps were Constructed & installed in 12 blocks of Jehanabad district with a coverage of 109190 beneficiaries. This project aims to provide adequate drinking water available to the community as the ground level of water will gradually decrease during summers.   |
| 4     | Distribution of School Bags at 41 Jehanabad & Nalanda district schools, Bihar.  | Arisma Charitable Trust | Jehanabad, Sheikhpura & Arwal, Nalanda district of Bihar | Under this transformative project, our goal was to elevate the standard of education by ensuring that every student has access to essential stationery items. We achieved this by distributing bags to 44 schools strategically spread across 10 blocks within 26 geographic areas, benefiting a total of 15,602 candidates. This initiative not only aimed at providing necessary tools for learning but also demonstrated our commitment to empowering the future generation with the resources they need to thrive in their education. |

|    |   |                         |  |  |
|----|---|-------------------------|--|--|
| 5  | Distribution of Teachers Bag at 33 Schools of Jehanabad & Nalanda District of Bihar. Sheikhpura | Arisma Charitable Trust | Jehanabad, Arwal, Sheikhpura & Nalanda district of Bihar | Under this, 529 Teacher's Bags were distributed in 44 schools with a demographic spread of 26 villages in 10 Blocks with a total beneficiary of 529.   |
| 6  | Distribution of Sports Kit at 38 Schools of Jehanabad & Nalanda districts of Bihar. Sheikhpura  | Arisma Charitable Trust | Jehanabad, Arwal, Sheikhpura & Nalanda district of Bihar | Under this, 44 Sports kits, including Indoor & Outdoor games, were distributed in 44 schools with a demographic spread of 26 villages in 10 Blocks with a total beneficiary of 16,641 students.  |
| 7  | Implementation of Skill Development Program in different trades.                                | NIIT Foundation         | Jehanabad district of Biha                               | To uplift the living standard, livelihood & employability, we initiated an initiative to provide skill development training, i.e., career-oriented, to increase the chances of selection during different placement drives & Interviews. Under this initiative, a Career Development Center is being established at B B M College, Okari, through NIIT Foundation with a target of 760 Candidates.   |
| 8  | Installation of Solar Off Grid at BBM College, Okari, Jehanabad                                 | Arisma Charitable Trust | Jehanabad  | Solar Energy is the future of India. Understanding this need and a futuristic vision, a Solar off-grid of 25 KVA is established under the CSR Initiative with full coverage to the college's strength of 5,000+ students. The aim is to set an example targeting these young students who will build India's future.   |
| 9  | Renovation of Govindpur Library, Govindpur, Jehanabad.  | Arisma Charitable Trust | Govindpur, Jehanabad                                     | Preserving the heritage of one of the long-standing libraries was essential to safeguard the old manuscripts and books. This library works effectively in promoting study habits among student groups, serves the Govindpur area, benefiting over 4,500 students.  |
| 10 | Construction of G+2 Community Hall at Govindpur Block, Jehanabad.                               | Arisma Charitable Trust | Govindpur, Jehanabad                                     | As in Civil Society, social rituals play an important role in the individual's day-to-day life. Society needs basic facilities to perform the different rituals. Hence, identifying this need, under the CSR of Arisma Charitable Trust, a G+2 building is constructed to perform such rituals with the availability of basic amenities that can uphold the smooth functioning of Social Rituals of the Society such as Marriage, Family functions, etc. It serves around 100+ households in the village of Govindpur. |

|    |   |                         |                  |  |
|----|---|-------------------------|------------------|--|
| 11 | Community Hall Dharmshala– Renovation work at Govindpur , Jehanabad.  | Arisma Charitable Trust | Okari, Jehanabad | As per the requirement to fulfill social rituals, a Community Hall was available at Okari Block of Jehanabad. Still, due to the unavailability of basic amenities and the bad condition of the building, the communities there could not utilize that Community Hall. To utilize the available Construction for the benefit of Society, which covers around 1000 Households restructure & renovate the building and installed basic amenities & facilities to the existing building so that its proper utilization will be implemented.  |
| 12 | Community Hall – New Construction at a different location in Jehanabad District.                                    | Arisma Charitable Trust |                  | In continuation to the Construction & development of the Community Hall for facilitating the Society under CSR of Aristo Pharmaceuticals, Arisma Charitable Trust identified different locations in different blocks of Jehanabad & Sheikhpura, and it is under process & is supposed to cover 10,000 Households for performing their social rituals & Obligations.  |
| 13 | Donating Ambulance IT support to Red Cross, Jehanabad.  | Arisma Charitable Trust | Jehanabad        | To facilitate the Medical Facilities in the Urban Area of Jehanabad, a Medical Ambulance has been Donated to the RED CROSS SOCIETY, Jehanabad, for patient movement. Through this, we are supporting approx. 3000 Patients every month.  |
| 14 | Supporting the Community with Security measures through CCTV. Goshi –26 cctv Jehanabad- 16cctv BBM College- 30 cctv | Arisma Charitable Trust |                  | Nowadays, security, mainly in terms of Traffic and Road Safety, is a major concern as the number of vehicles and their frequency is always high. To support local administration to regulate and monitor, under our CSR, we took the initiative to install 16 CCTV cameras at Jehanabad Town, which cover approx. 1.5 lac to 2 lac individuals and support Community at large  |
| 15 | Supporting Schools through innovative models of education, i.e., SMART Class.                                       | Arisma Charitable Trust | Okari, Jehanabad | In today’s rapidly advancing world, relying solely on conventional learning methods through books and regular classes is inadequate. The transformative power of audio-visual tools plays a pivotal role, leaving a lasting impact on students. Acknowledging the deficiency in government schools, – ARISMA Charitable Trust, is stepping in. They are elevating education by setting up smart classes installing seven setting up smart classes in five schools of Jehanabad and one college. This bold initiative is poised not only to bridge the gap but to usher in a new era of outcome-driven progress, significantly impacting the lives of 7,700 students. |





# CSR Activities

# 1. Construction and installation of public toilets in schools and public places



## 1.1 Category: Sanitation Improvement

**1.2 Program Objective:** To eradicate contamination and develop the targeted School & Public area to become open defecation free (ODF) and support the government in Swachh Bharat Mission.

**1.3 Project Brief:** We carried out a comprehensive initiative that encompasses 21 schools and public areas with an estimated outreach of 14013 individuals. This aligned with government bodies in their Swachh Bharat Mission, dedicated to eliminating contamination and fostering a clean environment through the achievement of Open Defecation Free (ODF) status. The primary goal is to combat various diseases stemming from open defecation and establish a civilized approach to waste management. This endeavour signifies a commitment to public health, environmental cleanliness, and the overall well-being of the community.

**1.4 Program Activities:** Our in-house CSR committees carefully assess if our work is on track with the annual action plan, preferably on a quarterly basis but not less than twice a year.

**1.4.1 Project Phasing –** Project Phasing marks the crucial initiation and formulation stage.

- **Step 1:** Commencing with a community or its representative articulating specific requirements and projecting anticipated outcomes.
- **Step 2:** Upon receiving the requisition, field and VLWs conduct on-site surveys to assess the fundamental needs, evaluating their feasibility, sustainability, and the necessary technical aspects.
- **Step 3:** Subsequently, formal approval and consent are sought from the competent authority, typically the Principal or BEO, considering the project's intervention in a government department's jurisdiction. This meticulous process highlights the commitment to strategic planning and collaboration, ensuring the project's success and alignment with the community's needs.

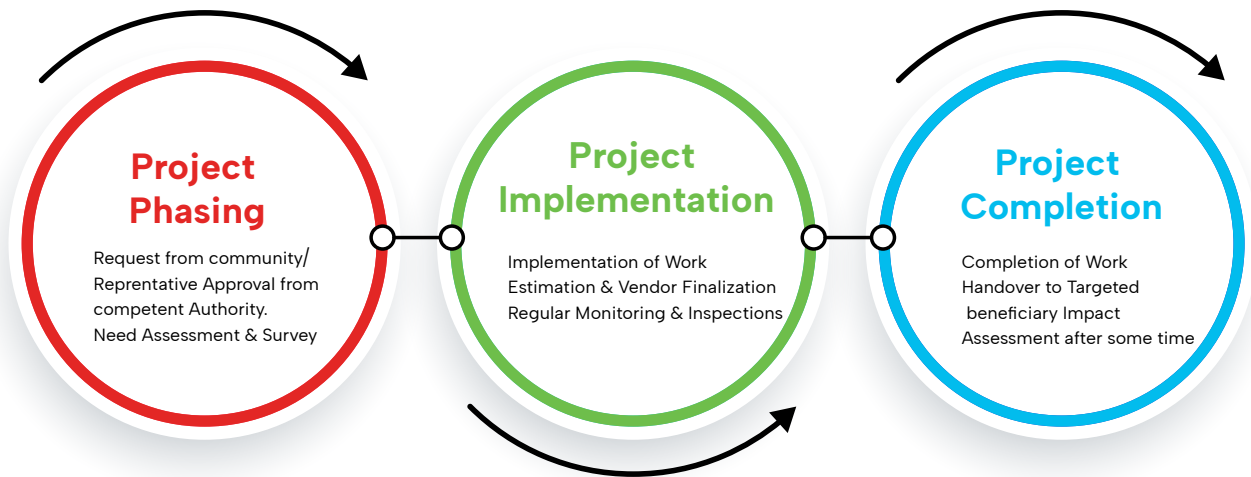


**1.4.2. Project Implementation** – The Project Implementation process starts once the approval comes from a competent authority, and then estimation & vendor finalization starts. Vendor finalization is a meticulous process that follows standard operating processes to ensure maximum transparency and trust. It basically starts with issuing a TOR and asking for the BOQ / Proposal with specifications required and financial budgeting. After reviewing the Proposal & Bid Analysis, a vendor will be selected, and PO / Work Order will be awarded with a proper deadline to Complete. During that tenure, our inspection visits at different stages of implementation will be done, and proper tracking will be carried out.

**1.4.3. Project Completion:** Under Project Completion, the assigned work to the vendor will be completed, and the final output will be handed over to us. Then, from our end, on final discussion with the competent authority, it will be handed over to the required beneficiary for which it was constructed.



**1.4.4.** After handing it to the community/ beneficiary, we ensure that it will be utilized for what it is constructed and do an Impact Assessment to determine & assess its viability, sustainability, and required outreach.



### 1.5. Major Outreach this Year

| Thematic Area                           | Coverage |       |         | Outreach  |
|---|----------|-------|---------|---|
|   | District | Block | Village |   |
| Block construction (Sanitation Toilet)) | 2        | 12    | 19      | 21 plus two in community<br>21 in school<br>2 in public place |

## 2. Installation of 3300 Solar Street Light in 5 different phases in different Blocks of Jehanabad & Nalanda Sheikhpura Arwal, Bihar



### 2.1 Category: Environmental Sustainability

**2.2 Program Objective:** To ensure well-lit, safe surroundings in underprivileged rural areas and promote safety during nighttime.

**2.3 Project Brief:** In a transformative endeavor, the installation of 3300 Solar Street lights unfolded across four strategic phases. This helped illuminate over 10 blocks in Jehanabad Sheikhpura and Nalanda Arwal. Spanning 2050 distinct locations in 128 villages, this initiative helps impact lives of approximately 138250 individuals. The overarching objective is twofold: harnessing the power of green energy to minimize dependence on conventional electricity sources and adding a safety net of light access to underprivileged areas. This project stands as a beacon of progress, bringing sustainability and light to communities that deserve empowerment and progress.

**2.4. Program Activities:** We worked towards the installation of solar lights. The approach will be the same, but the activities will be different from all other implementation processes. The process for solar light installation operates systematically in a series of steps:

- **Requisition Receipt:** Upon receiving a requisition for solar lights, the survey team is promptly dispatched to the location.
- **Viability and Necessity Survey:** The survey team thoroughly assesses the site, examining the viability and necessity of solar lights during night time.
- **Report Sharing:** A comprehensive report is generated based on the survey findings, detailing the feasibility and requirement for solar lighting.
- **Vendor Assessment:** Following the survey, our designated vendor conducts a site visit to assess the quantity of solar lights needed.
- **Proposal Submission:** The vendor proposes the required quantity to us for approval, including details on the specifications and cost.
- **Approval Process:** The proposal undergoes scrutiny and, upon approval from senior management, a Purchase Order (PO) is issued to the vendor.
- **Installation Planning & execution:** The final installation is meticulously planned, ensuring an organized and efficient deployment.

| Thematic Area                                   | Coverage |       |         |        |          | Outreach |
|---|----------|-------|---------|--------|----------|----------|
|   | District | Block | Village | School | Location |          |
| Green & Renew Energy (Solar light Installation) | 4        | 10    | 128     | 6      | 3300     | 138250   |





### 3. Installation & Construction of 525 Hathia Handpumps at different identified public locations in Jehanabad & Nalanda Sheikhpura Arwal district, Bihar.



#### 3.1 Category: Health & Hygiene

**3.2 Program Objective:** With global water shortages, poverty and daily struggles faced by marginalised community, the need for reliable water source is pressing. Our initiative acts as a lifeline to provide safe drinking water to this section. Through this endeavor, we not only provide hydration but also strive to uplift communities, ensuring that access to clean water is a fundamental right, irrespective of socioeconomic constraints.

**3.3 Project Brief:** Under this project, 525 handpumps were Constructed & installed in 12 blocks of Jehanabad Sheikhpura and Nalanda Arwal. with a coverage of 1,09,190 beneficiaries. The aim of this project is to provide adequate drinking water available to the community, as, during summers, the ground level of water will gradually decrease.

**3.4. Program Activities:** Implementation of installation of Hathia Handpumps includes below-given activities:

- Request letter from Community / Community Representative.
- Survey & Approvals from Competent Authority.
- Identification of vendor & Project awarding.
- Regular field visits & Inspection of depth, Water level, & Civil work take place.
- Post Completion of Work, hand over it to the community.

| Thematic Area                               | Coverage |       |         |        | Outreach |
|---|----------|-------|---------|--------|----------|
|   | District | Block | Village | School |          |
| Health & Hygiene<br>(Handpump installation) | 4        | 12    | 143     | 595    | 109190   |



## 4. Distribution of School Bags, Teachers Bag & Sports Kit at 41 schools of Jehanabad, Arwal, Sheikpura & Nalanda district, Bihar.



### 4.1 Category: Promotion of Sports

**4.2 Program Objective:** With this initiative we aim to empower school-going children by providing them with essential resources for education and also fostering an environment that ignites their intrinsic desire to learn. Beyond academic support, our goal is to contribute to their comprehensive personality development, helping them become well-rounded individuals ready to face a bright future.

**4.3 Project Brief:** We fulfilled our aim to provide students with good access to resources by providing them with essential stationary items and sports kits. The initiative spans across 10 Blocks in Jehanabad Sheikpura and Nalanda districts, reaching 26 villages and benefiting 44 schools. Through strategic bag distribution and the inclusion of sports kits, we are not only equipping students with the tools for academic success but also fostering their holistic growth and well-being

**4.4. Program Activities:** Under this project, to uplift the standard of education and make all necessary stationary items available to the students, bag distribution was done along with a sports kit to individual schools for the overall development of students. It covers 10 Blocks of Jehanaba, Arwal, Sheikpura & Nalanda districts with an intense coverage of 26 villages at 44 different schools.



| Thematic Area                             | Coverage |       |         |        | Outreach      |
|---|----------|-------|---------|--------|---------------|
|   | District | Block | Village | School |               |
| School Project (School Bag Distribution)  | 4        | 10    | 26      | 44     | 15602         |
| School Project (Teacher Bag Distribution) | 4        | 10    | 26      | 44     | 529           |
| School Project (Sports Kit Distribution)  | 4        | 10    | 26      | 44     | 18,500        |
| Total outreach                            |          |       |         |        | <b>34,631</b> |



## 5. Career Development Center, Okari Implemented by NIIT Foundation.



### 5.1 Category: Education

**5.2 Program Objective:** To provide candidates with the resources, tools, and guidance they need to explore career options and make informed decisions. Also, to enrich them with the different job oriented training and develop them to earn their own livelihood.

**5.3 Project Brief:** In order to uplift the living standard, livelihood & employability, we initiated an initiative to provide skill development training, in order to increase the chances of selection during different placement drives & Interviews. Under this initiative, a Career Development Center is being established at BBM College, Okari, through NIIT Foundation with a target of 580 Candidates.

### 5.4. Program Activities:

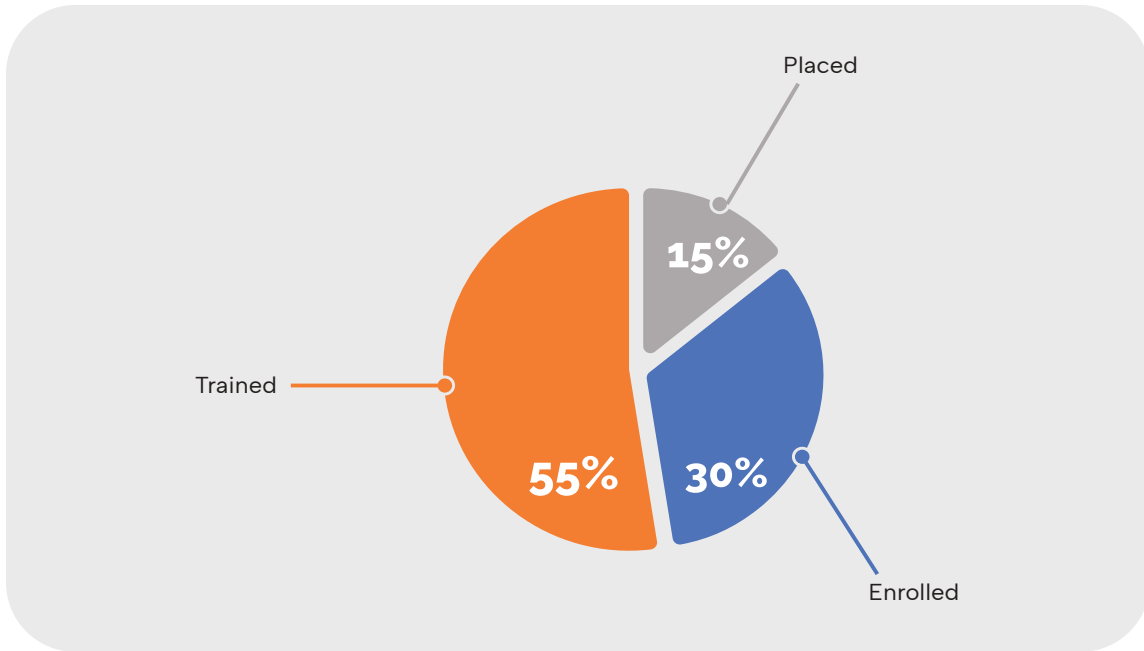
- Community Mobilization & Counselling.
- Pre-Enrolment
- Assessment & Parents Meeting.
- Career Guidance Task & Expert Session
- Class Test & Mock Interviews
- Industry Visit
- Placement Drive & Employment



### 5.5. Major Outcomes this Year:

| Phase      | Proposed Trade | Trained Trade | Total Enrollment | Trained        | Assessed & Certified | Placed         |
|------------|----------------|---------------|------------------|----------------|----------------------|----------------|
| Project I  | 8 Trades       | 6 Trades      | 516 Candidates   | 393 Candidates | 393 Candidate        | 118 Candidates |
| Project II | 8 Trades       | 4 Trades      | 394 Candidates   | 337 Candidates | 337 Candidates       | 141 Candidates |

## Candidates number



## 6. Rural Development

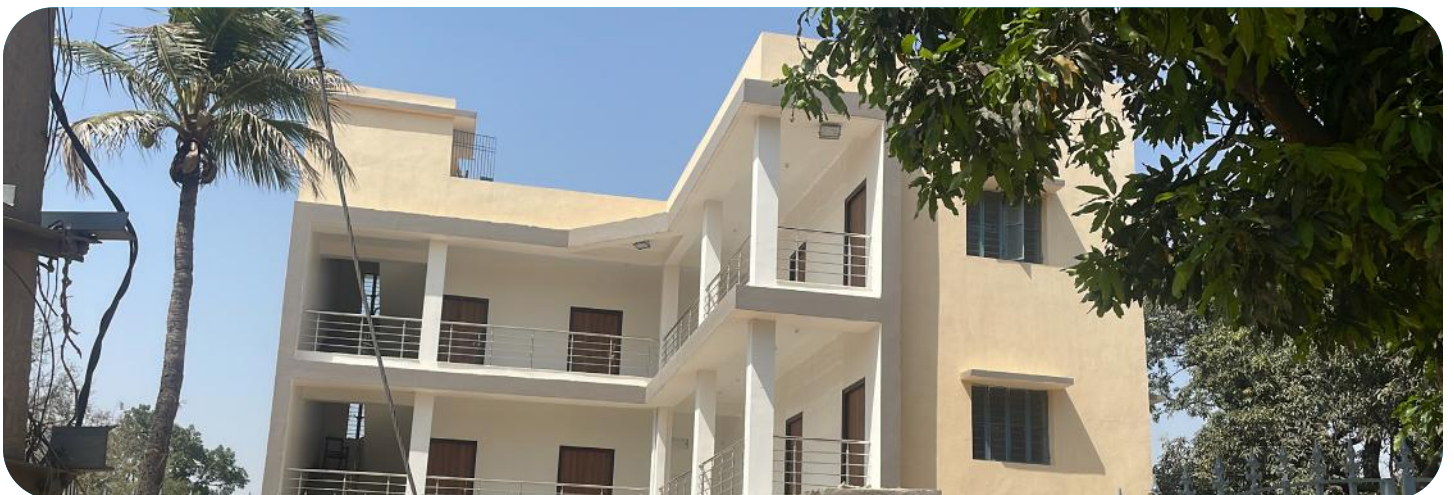
Construction of yatri shed



Restoration of pond



Infrastructure Development support for community hall in village govindpur





# Project Activity / Way Forward

| Category   | Projects  | Detail About Project   |
|--|---|--|
| Support for Quality Education including Digital learning | <ul style="list-style-type: none"> <li>Construction of School Building</li> </ul>   | To improve the educational standards in society Arisma Charitable Trust has planned this project to ensure basic educational facilities such as Infrastructure construction, digital classroom, Provision of potable drinking water for the students, It will be implemented directly and indirectly both the ways   |
|  | <ul style="list-style-type: none"> <li>Infrastructure Support -Classroom, Science lab, Auditorium ,Hostel, Library,</li> <li>IT support-Computer Lab, Smart Classes</li> <li>Stationary support-School Bags ,Teacher bags, Stationary materials Pens, Pencil so on in school and college</li> </ul> | To improve the educational standards in identified schools Arisma Charitable Trust has planned this project to ensure basic educational facilities such as Infrastructure Up-gradation, digital classroom, Provision of potable drinking water for the students, distribution of stationary items, book donation, Celebration of school-based activities etc. It will be implemented directly and indirectly both the ways |
|  | <ul style="list-style-type: none"> <li>Scholarship support to students</li> </ul>   | To support and promote higher education to meritorious students Arisma Charitable Trust has planned this project   |
|  | <ul style="list-style-type: none"> <li>Skill development for marginalised population</li> </ul>   | Imparting placement linked and market-oriented skill training with suitable wage/ self employment opportunities. Arisma Charitable Trust focus is to provide not   |
| Environmental Sustainability                             | <ul style="list-style-type: none"> <li>Setting up of Solar power grid</li> <li>Installation Solar Street lights</li> </ul>  | Renewable energy is need of an hour. To contribute to meet future crises and make usage of sustainable energy Arisma Charitable Trust has initiated solar unit setup plan. Under this program solar street light and solar grid set up projects will be conducted in schools, collage, public building and in communities.   |
|  | <ul style="list-style-type: none"> <li>Tree Plantation</li> </ul>   | Under Environment conservation, Arisma Charitable Trust has planned to setup Tree Plantation drives towards environmental sustainability and awareness generation in schools and communities for sensitizing people towards importance and conservation of environment. It will be implemented directly and indirectly both the manners.   |

| Category           | Projects   | Detail About Project   |
|--------------------|--|--|
| Health and Hygiene | <ul style="list-style-type: none"> <li>Hospital Construction</li> </ul>  | <p>To strengthen the rural primary Health Arisma Charitable Trust has planned construct a hospital. Our CSR initiative in healthcare is largely for rural residents and communities located in remote areas.</p>   |
|                    | <ul style="list-style-type: none"> <li>Treatment Support for marginalised individuals</li> </ul>   | <p>Arisma Charitable Trust will provide treatment and rehabilitation support for marginalised population . It will be implemented directly and indirectly both the manners.</p>  |
|                    | <ul style="list-style-type: none"> <li>Setup of health clinics and support to health care organisations &amp; centres</li> </ul>                     | <p>To strengthen the rural primary Health Centers and Hospitals Arisma Charitable Trust has planned to support for infrastructural and equipment. Our CSR initiative in healthcare is largely for rural residents and communities located in remote areas. It would be implemented in both the manners i.e., directly and with the help of implementing agencies.</p>  |
|                    | <ul style="list-style-type: none"> <li>Safe Drinking water-Handpump and RO Unit installation</li> </ul>  | <p>Water and sanitation are fundamental to good public health. To take this as priority Arisma Charitable Trust has proposed to supply Safe Drinking Water to school and Community in Villages. The project would be implemented in both the manners i.e., directly and with the help of implementing agencies.</p>  |
|                    | <ul style="list-style-type: none"> <li>Meal Support</li> </ul>   | <p>To support nutritious and supplementary food to increase the immune system and for improving nutrition security of the poor and vulnerable kids in society Arisma Charitable Trust will do this initiative in both the manners i.e., directly and with the help of implementing agencies.</p>   |
|                    | <ul style="list-style-type: none"> <li>Assistive Device and treatment support to Children, youngster and person with disability(C/Y/PWD )</li> </ul> | <p>Arisma Charitable Trust will provide treatment and assistive device support for C/Y/PWD . It will be implemented directly and indirectly both the manners.</p>  |
|                    | <ul style="list-style-type: none"> <li>Mobile Healthcare Unit</li> </ul>   | <p>Mobile Healthcare Unit programme provides basic healthcare services at the doorstep of communities residing in remote, underserved and unreached areas. The main aim of MHU is to provide services under different thematic areas such as Maternal Health, Neonatal and Infant Health, Child and Adolescent health, Reproductive Health and Contraceptive Services, Prevention and control of Communicable and Non-Non-Communicable diseases in joins hands with Government's Health Department and NGO's. It will be implemented directly and indirectly both the manners.</p> |

| Category                  | Projects  | Detail About Project  |
|---------------------------|---|---|
|                           | <ul style="list-style-type: none"> <li>Sanitation–Drainage and Toilet block Construction</li> </ul>   | Arisma Charitable Trust will be supporting for construction of Drainage and Toilet block for providing access to adequate and equitable sanitation including an appropriate management and disposal of other solid and liquid waste .It will be implemented directly                |
| Heritage, Art and Culture | <ul style="list-style-type: none"> <li>Support for setup of public Library</li> </ul>   | Arisma Charitable Trust will be supporting for infrastructure in rural community for setting up of public library. It will be implemented directly  |
| Rural Development         | <ul style="list-style-type: none"> <li>Infrastructural support –Community Hall,Road,Yatrished,CCTV</li> </ul>   | Considering village self-reliant Arisma Charitable Trust will be supporting for basic and necessary things in the villages for improving and setting up of basic amenities for the villages Arisma Charitable Trust will be implementing directly as well as in collaboration also. |
| Promotion of sports       | <ul style="list-style-type: none"> <li>Sports kit distributions and support to sports academy</li> </ul>  | Training and sport kit support for promoting rural sports, nationally recognised sports, Paralympic sports and Olympic sports. It will be implemented directly.   |
| Disaster Response         | <ul style="list-style-type: none"> <li>Emergency Relief and support in case of natural disaster as well as initiatives towards mitigation including water recharging and other ecosystem led project</li> </ul> | To support for relief measures during times of natural disasters, anywhere in the country; Undertaking and supporting rehabilitation measures post-disasters on need basis.   |



## Contact With Us

 Regd. Office: Gala No. 11,2<sup>nd</sup> Floor,  
Jyoti Wire House, 23-A Shah Industrial  
Estate, Off Veera Desai Road, Andheri(W)  
Mumbai- 400 053

 [csr@aristopharma.co.in](mailto:csr@aristopharma.co.in)

 [www.aristopharma.co.in](http://www.aristopharma.co.in)

 +91-22-2673 9999, +91-22-6830 9999