



PROJECT CARGO WEEKLY

[www.projectcargo-weekly.com](http://www.projectcargo-weekly.com)

# PCW FREIGHTER VOYAGE EDITION

## Part 3 (3)

### 23/4 - 07/5 - 2024

A voyage report from mv ABB VANESSA from Sines, Portugal to Soma, Japan

SPECIAL TRAVEL EDITION BY CHIEF EDITOR

## PART THREE ONBOARD ABB VANESSA

# BEST OF EDITION



[www.asiabreakbulk.com](http://www.asiabreakbulk.com)



[www.coli-shipping.com](http://www.coli-shipping.com)



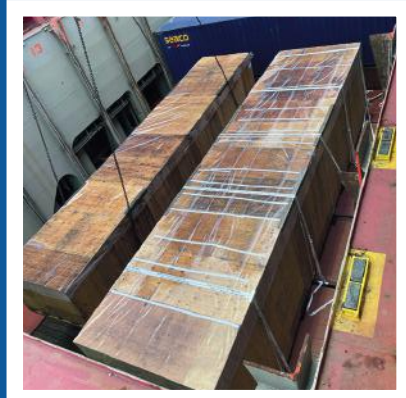
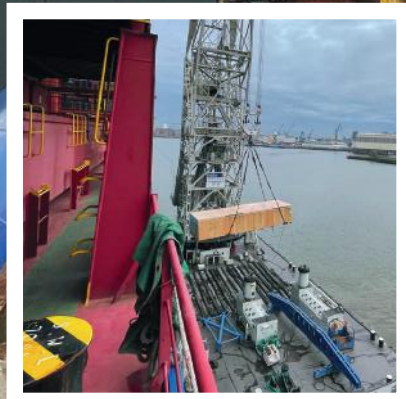
[www.projectcargo-weekly.com](http://www.projectcargo-weekly.com)

**COLLI**  
Logistics



***Solutions beyond  
the ordinary!***

Supporting you with **cost-effective  
and reliable logistics** by managing  
the entire supply chain so you can  
focus on your core business



# EDITORIAL

Dear Readers,

It is Thursday the 23rd of May and I am very proud to present to you the third and final edition of the Freighter Voyage book as passenger and editor. The final stretch of the epic trip onboard mv ABB Vanessa was from Singapore to Soma, Japan. As with the previous two sectors it was a fantastic trip.

For a sailor I believe seeing islands or getting closer to shore (and perhaps mobile signal 😊) is always a welcome feeling. For me what was particularly fantastic was passing some of the islands North of the Philippine island of Luzon. While the Batanes Islands strait was deep it was also quite narrow and for me standing on "Monkey Island" enjoying the sunrise was nothing short of a golden feather in my memory bank cap. See the following video:



Now coming to the end of the voyage onboard I also did send my warmest thoughts to ABB Singapore and "ABB VANESSA"'s managers Carsten Rehder and Victoria Marine Ship Management, whose arrangement made it possible to take the trip all the way from Portugal. Coli Shipping ([www.coli-shipping.com](http://www.coli-shipping.com)) has a long history doing shipping business with Japan - our final destination for this voyage. I spoke to Mr. Herbert Loesing of Coli Shipping who organized this voyage about their links to Japan.



[READ HIS RESPONSE ON THE HISTORY OF COLI SHIPPING IN JAPAN](#)

I arrived Soma, Japan on the 3rd of May after 49 days. Due to arriving in the Golden Week I could only disembark a few days after arriving to the land of the rising sun. While waiting to disembark I took one of the most wonderful pictures of my "career" in photography. You can judge for yourself here, totally unedited or faking it with all the modern tools of a mobile phone, hopefully this photo captures the raw nature I witnessed rising before my eyes

# EDITORIAL



I disembarked the vessel saying goodbye to the crew and captain, all of whom were kind to me during the voyage and whilst being professional and handling their work efficiently they always had time to guide me or give answers to the questions I raised. My respect goes out to the seafarers, many of whom are away from their families for 9 months at a time. Hardship is being away from the ones you love, still it is also a strength in life where you learn to live without the constant rewards that our new IT and internet generation now craves. I believe we will have massive social problems on our hands with a generation not even able to focus on reading a book... But that is for another issue of PCW, speaking of which we are back to normal on the 30th of May and then with 2 more issues in June, July is summer holiday for yours truly

Enjoy this short version of part 3 of my travelogue which is the final one.

Wishing you well and we are baaaaack again in a week.

Yours sincerely,

**Bo H. Drewsen**

**[bo.drewsen@projectcargo-weekly.com](mailto:bo.drewsen@projectcargo-weekly.com)**

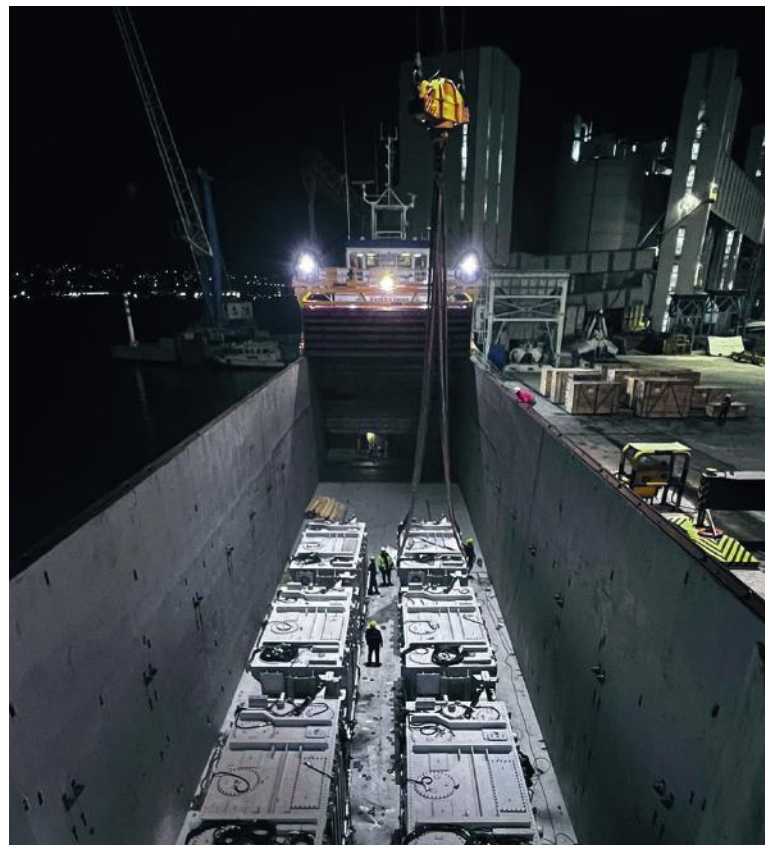
**Editor in Chief of Project Cargo Weekly**



# TABLE OF CONTENTS

PCW FREIGHTER VOYAGE EDITION 2024	i
COLI LOGISTICS	2
EDITORIAL	3-4
TABLE OF CONTENTS	5
CPC ISTANBUL	6
PHOTOS/VIDEOS	7-12
CARSTEN REHDER	13
PHOTOS/VIDEOS	14-19
VICTORIA MARINE	20
PHOTOS/VIDEOS	21-26
ABB SINGAPORE	27-28
PHOTOS/VIDEOS	29-34
CPC JAPAN	35
PHOTOS/VIDEOS	36-41
FOOD ONBOARD	42-46
PEOPLE ONBOARD	47-54
CABIN & MESS ROOM ONBOARD DURING 53 DAYS	55
HEAVY WEATHER	56
ARRIVED AND ALONGSIDE AFTER 49 DAYS OF SAILING	57-61
GOODBYE JAPAN FROM TOKYO, NARITA BACK TO “REAL LIFE”	62
PROJECT CARGO WEEKLY	63
THE HISTORY OF COLI SHIPPING IN JAPAN	64-65
GET THE PCW MOBILE APP	66





# CPC

COLI Project Cargo Ltd.



**COLI PROJECT CARGO – ISTANBUL**

+90 (533) 323 4272

[istanbul@coli.com.tr](mailto:istanbul@coli.com.tr)

[www.coli-shipping.com](http://www.coli-shipping.com)

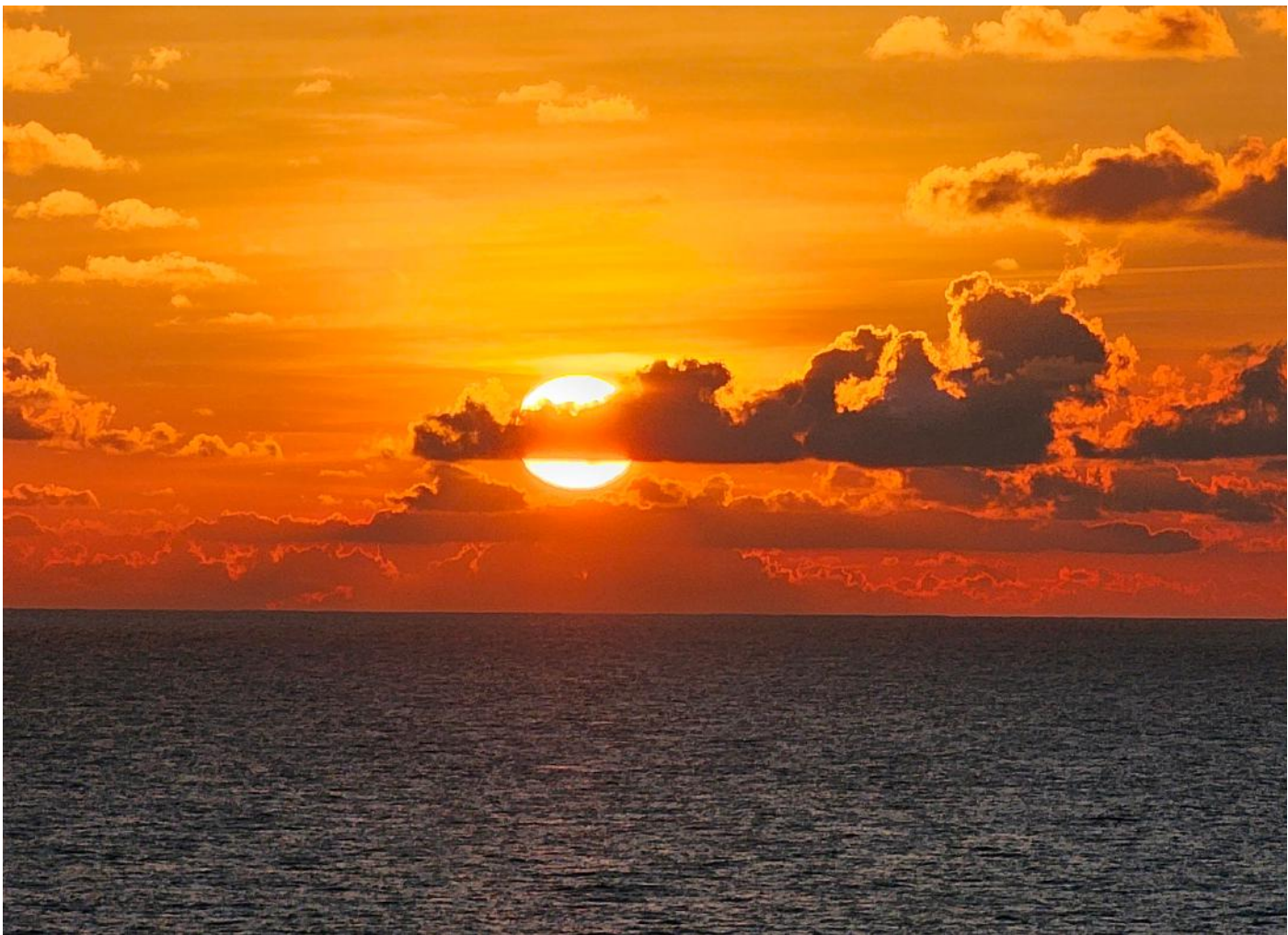












**STRAIT**

**CARSTEN REHDER**  
SHIP OWNERS



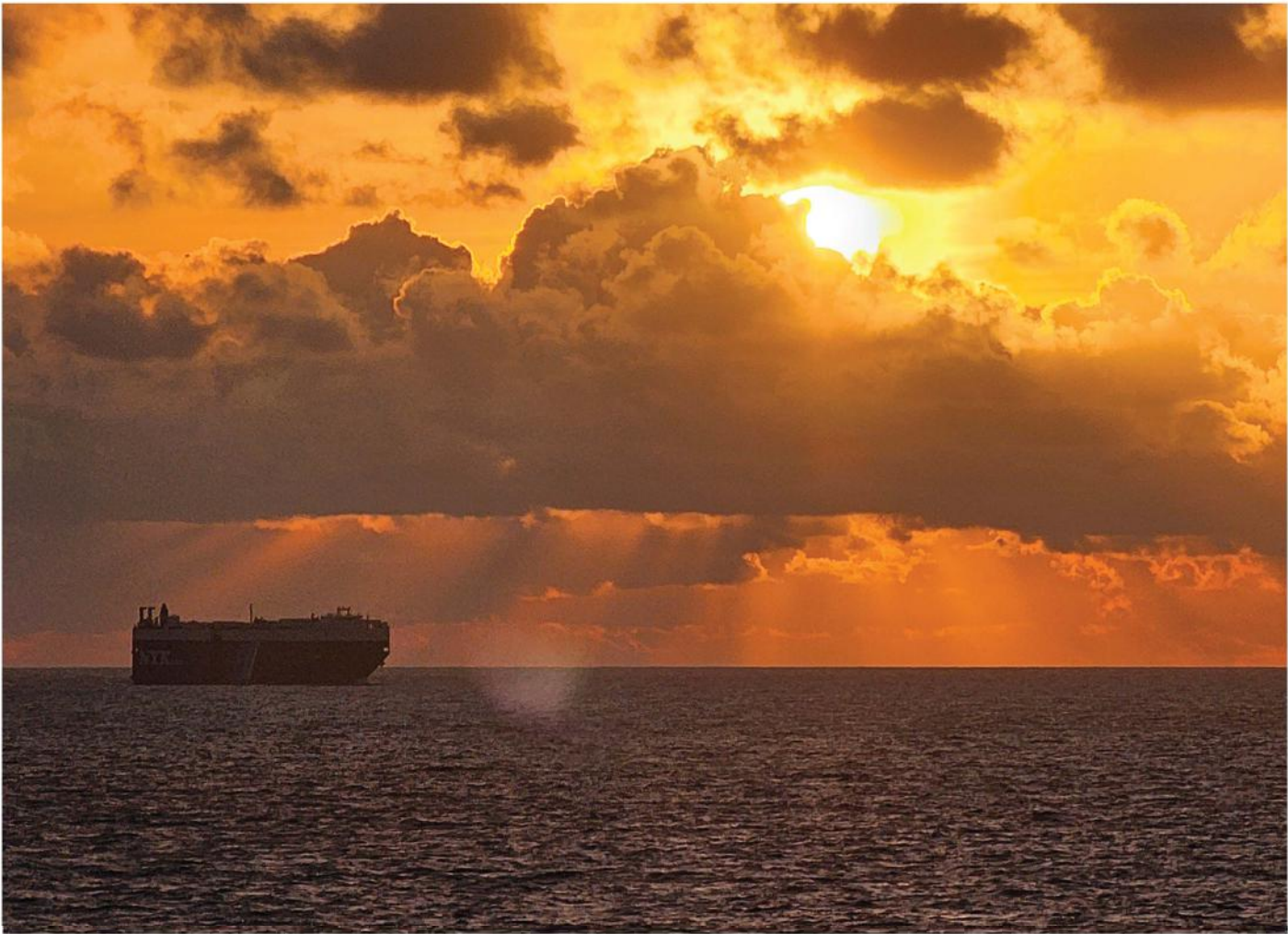
**TAILOR-MADE SHIPPING  
SOLUTIONS SINCE 1903**

**Ship Owning | Project Development  
Ship Management | Ship Broking**

**Container | Dry Bulk | Multi-Purpose**

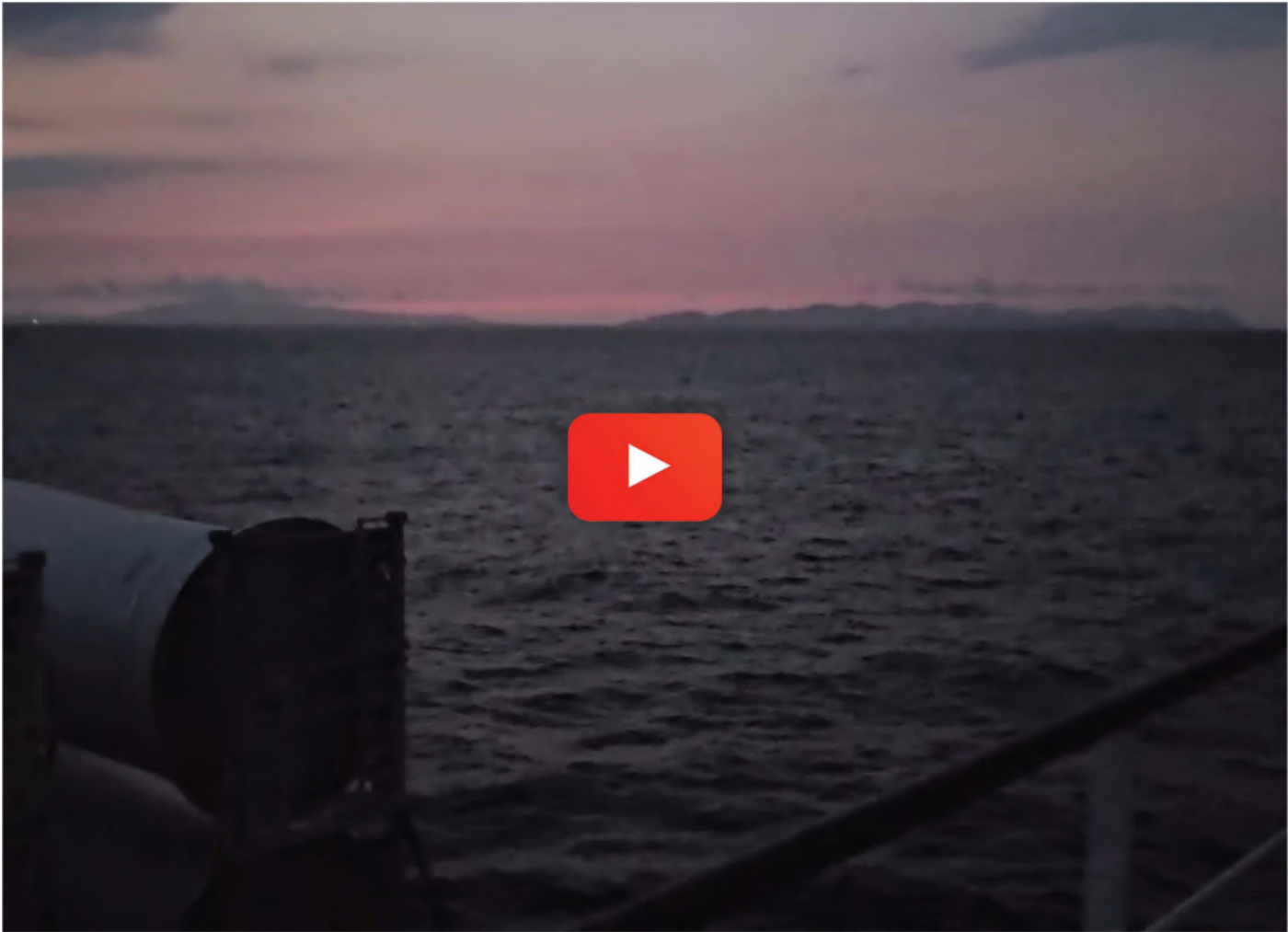
**WWW.CARSTENREHDER.DE**















# **VICTORIA MARINE**

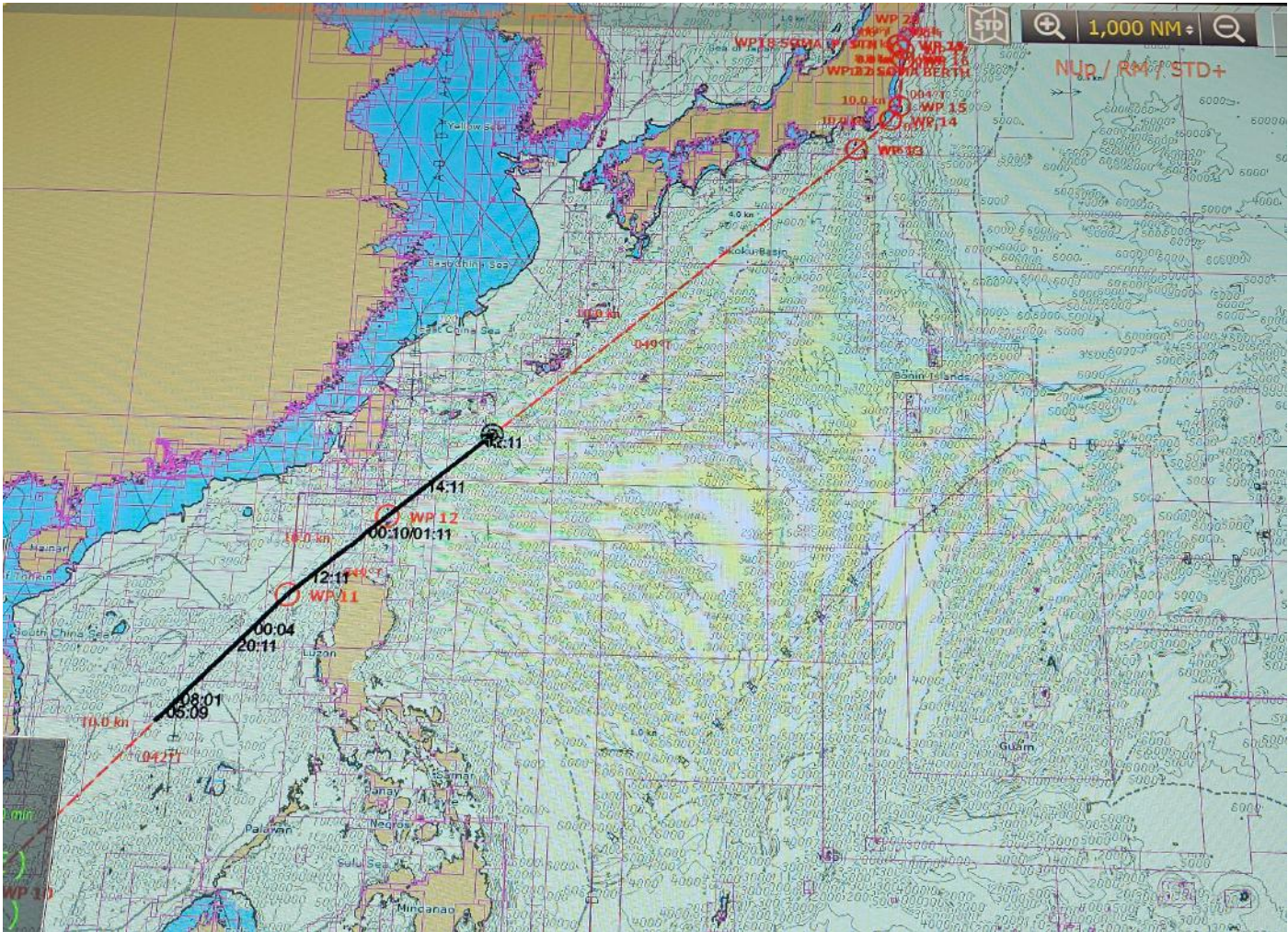
## SHIP MANAGEMENT

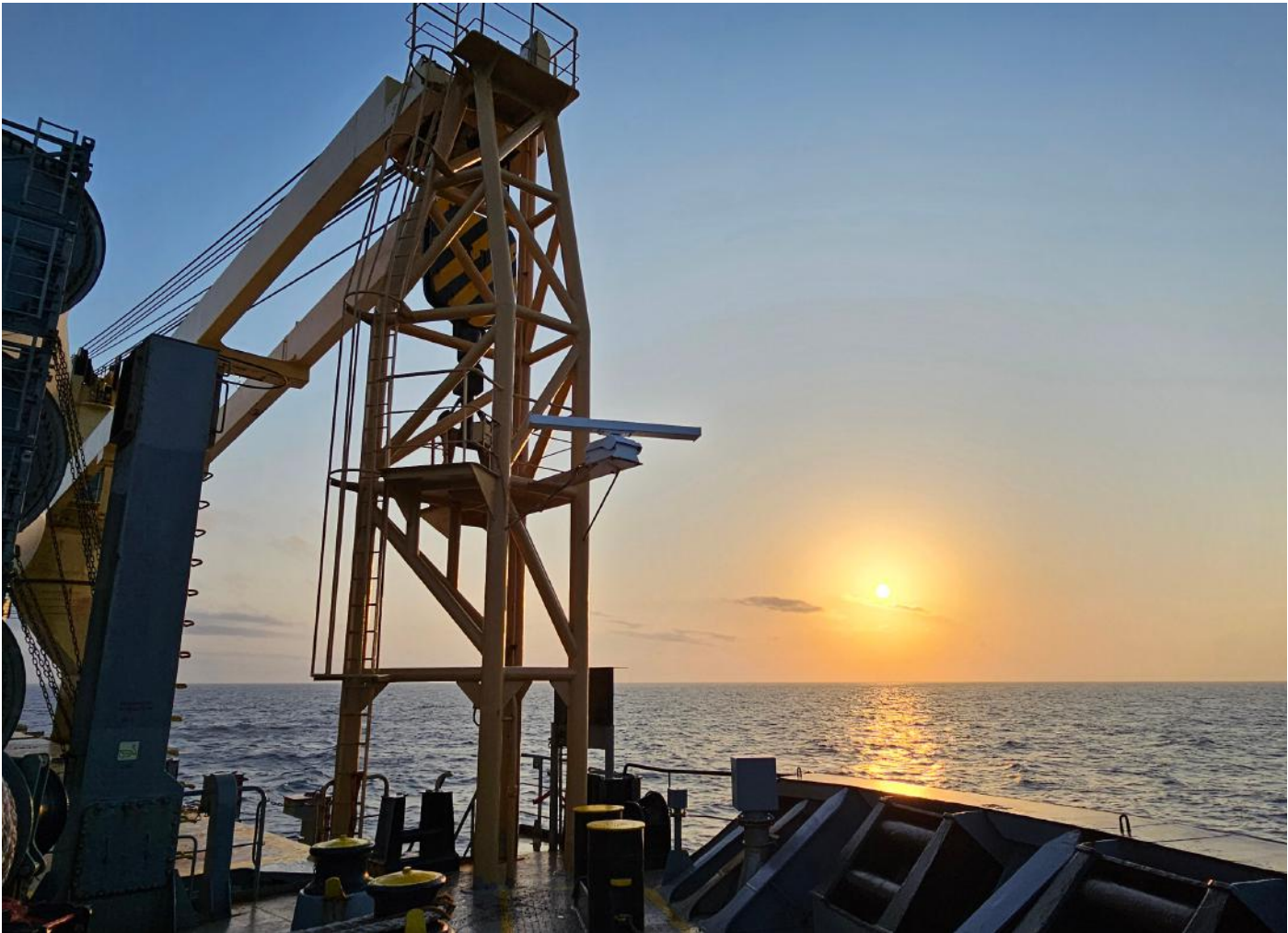
### **SAFE AND RELIABLE SHIP OPERATIONS**

**Container | Dry Bulk  
Multi-Purpose | Tanker**

[WWW.VICTORIA-MARINE.DE](http://WWW.VICTORIA-MARINE.DE)













# YOUR SHIPPING PARTNER IN ASIA + EUROPE



## Asia Break Bulk (Singapore) Pte. Ltd.

3 Phillip St #12 - 02

Singapore 048693, Singapore

Phone +65 689 626 14

E-Mail [chartering@asiabreakbulk.com](mailto:chartering@asiabreakbulk.com)



[www.asiabreakbulk.com](http://www.asiabreakbulk.com)

## Asia Break Bulk (Singapore) Pte. Ltd.

European Representative Office

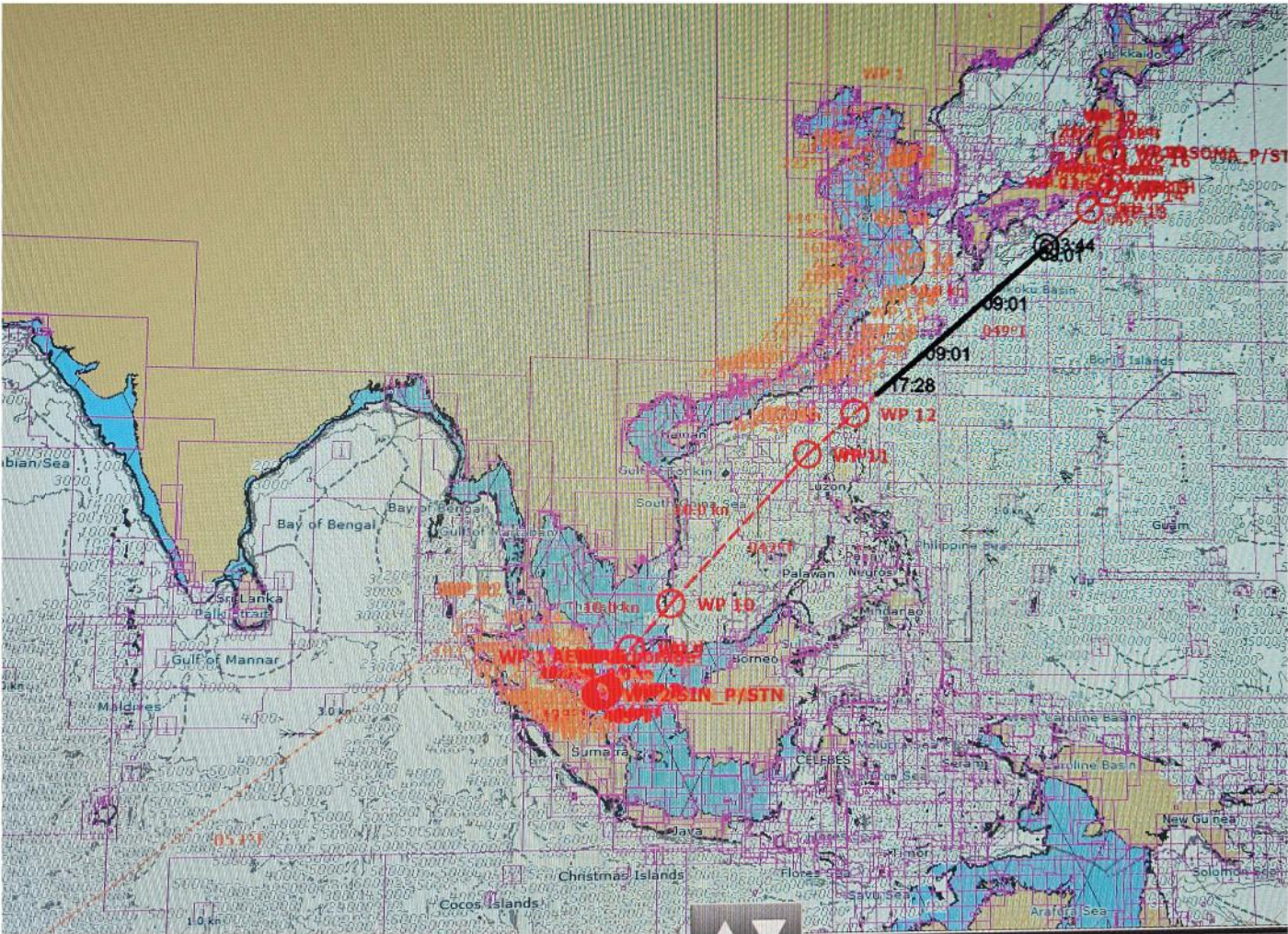
Großer Grasbrook 10

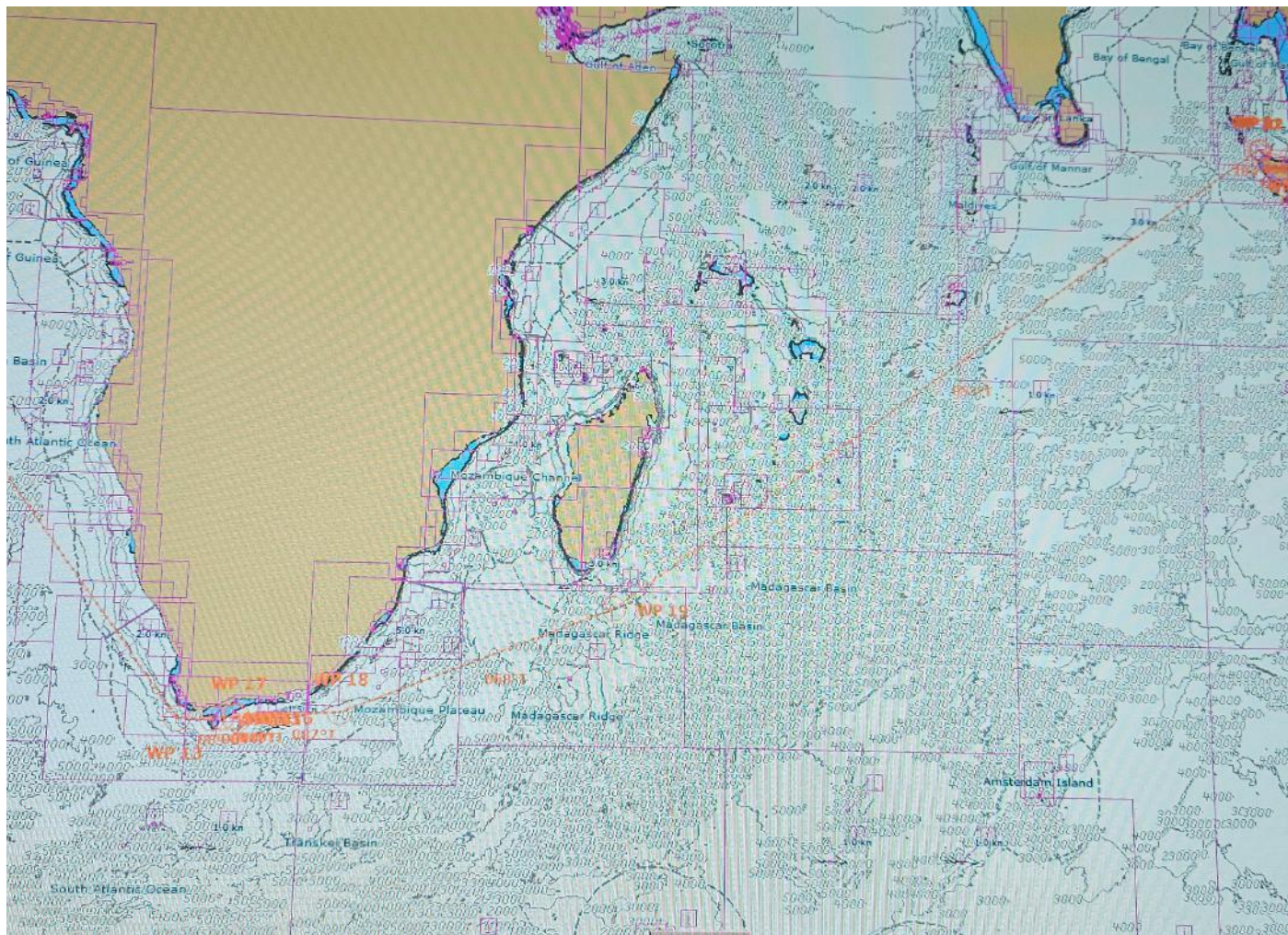
20457 Hamburg, Germany

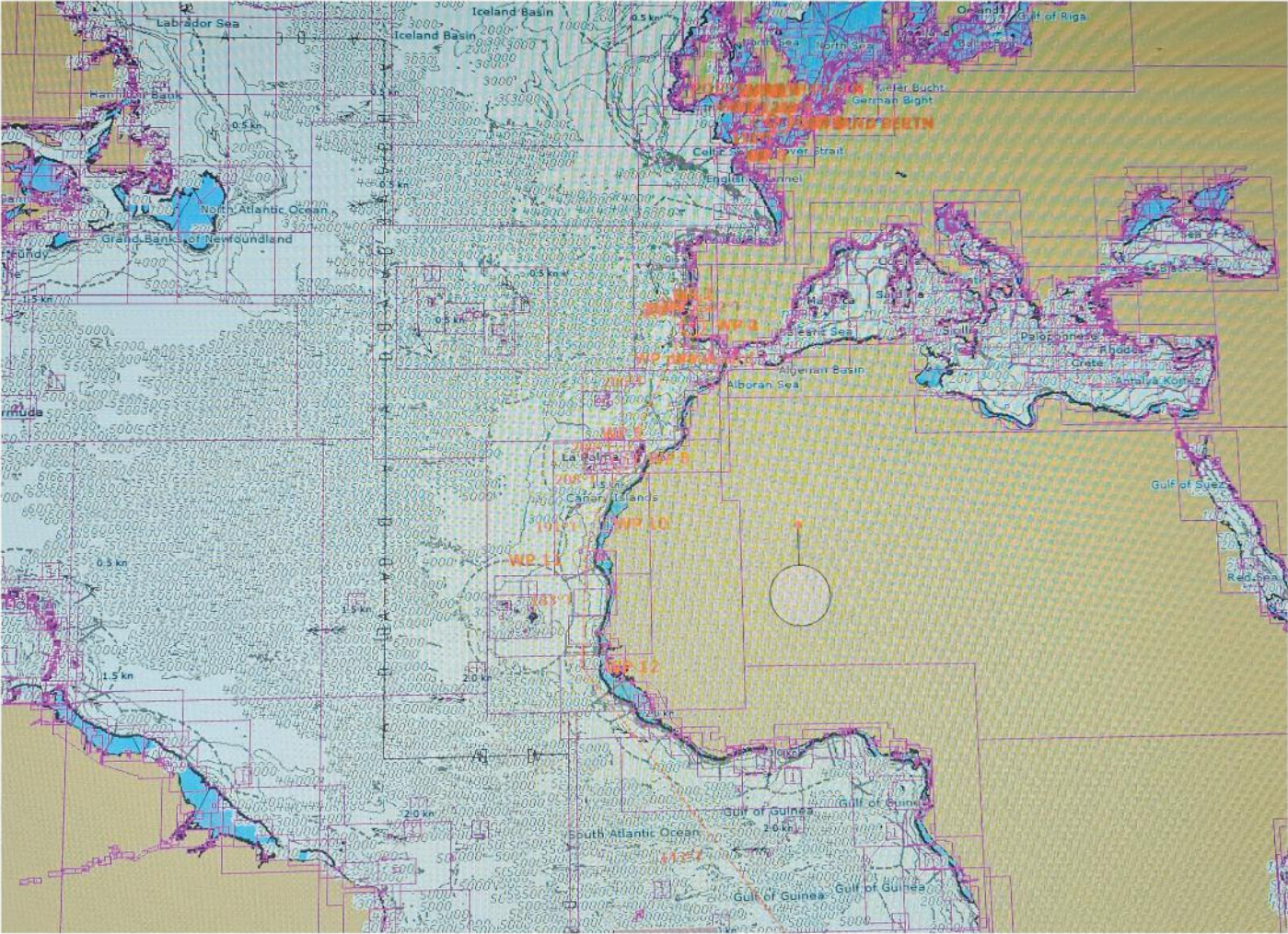
Phone + 49 40 320 25 791

E-Mail [chartering@asiabreakbulk.com](mailto:chartering@asiabreakbulk.com)



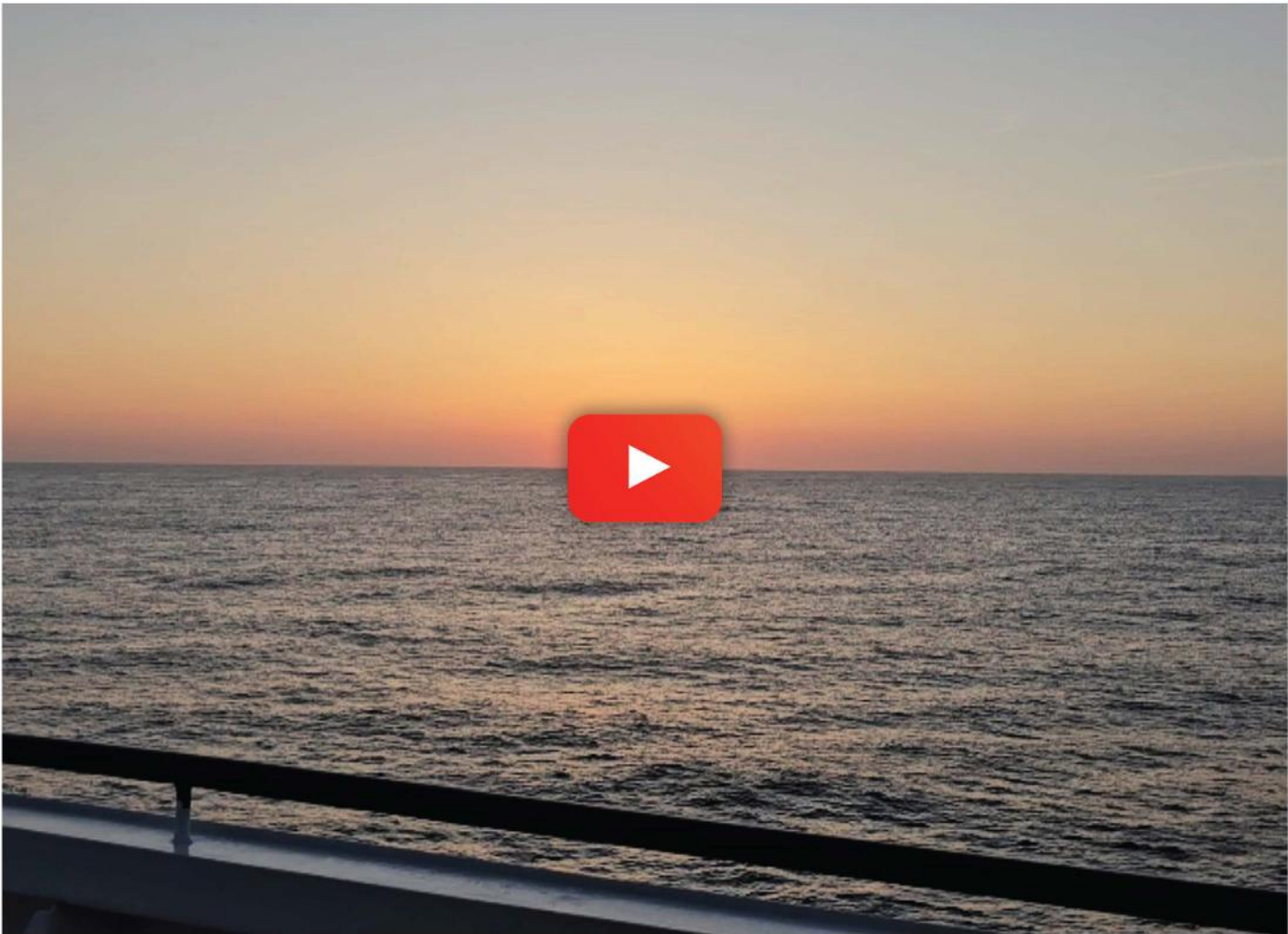














Vessel: MV Atlantic Harmony  
Carrier: AAL Shipping  
Loading wind energy converters  
at Emden in January



# *Solutions beyond the ordinary*

**CPC Consolidated Pool Carriers (Asia) Co., Ltd.**

7th Fl., Kibun Daiichi Bldg., 7-5-3 Tsukiji, Chuo-ku, Tokyo 104-0045 Japan

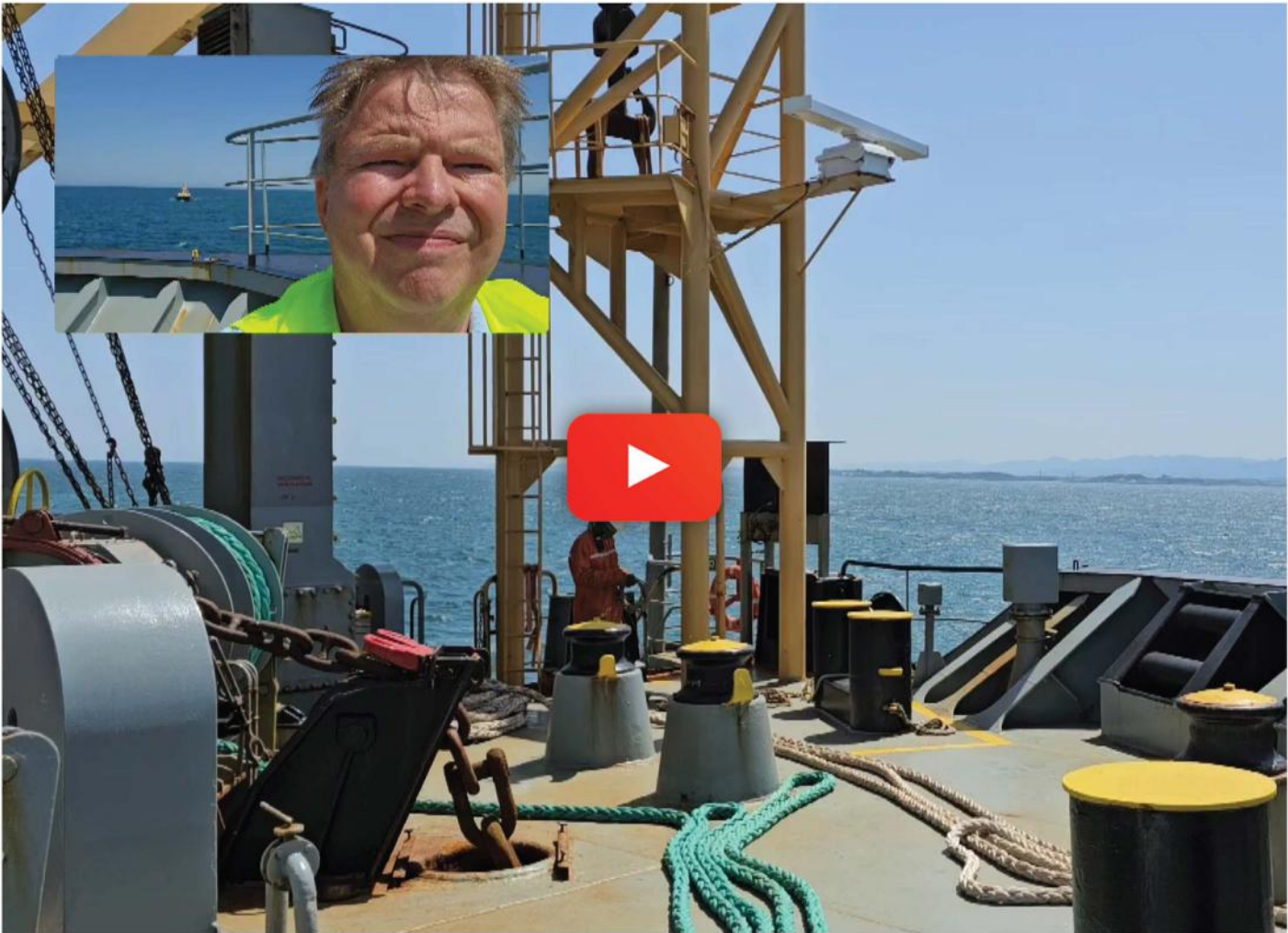
E-mail : [cpc@cpc-asia.co.jp](mailto:cpc@cpc-asia.co.jp)

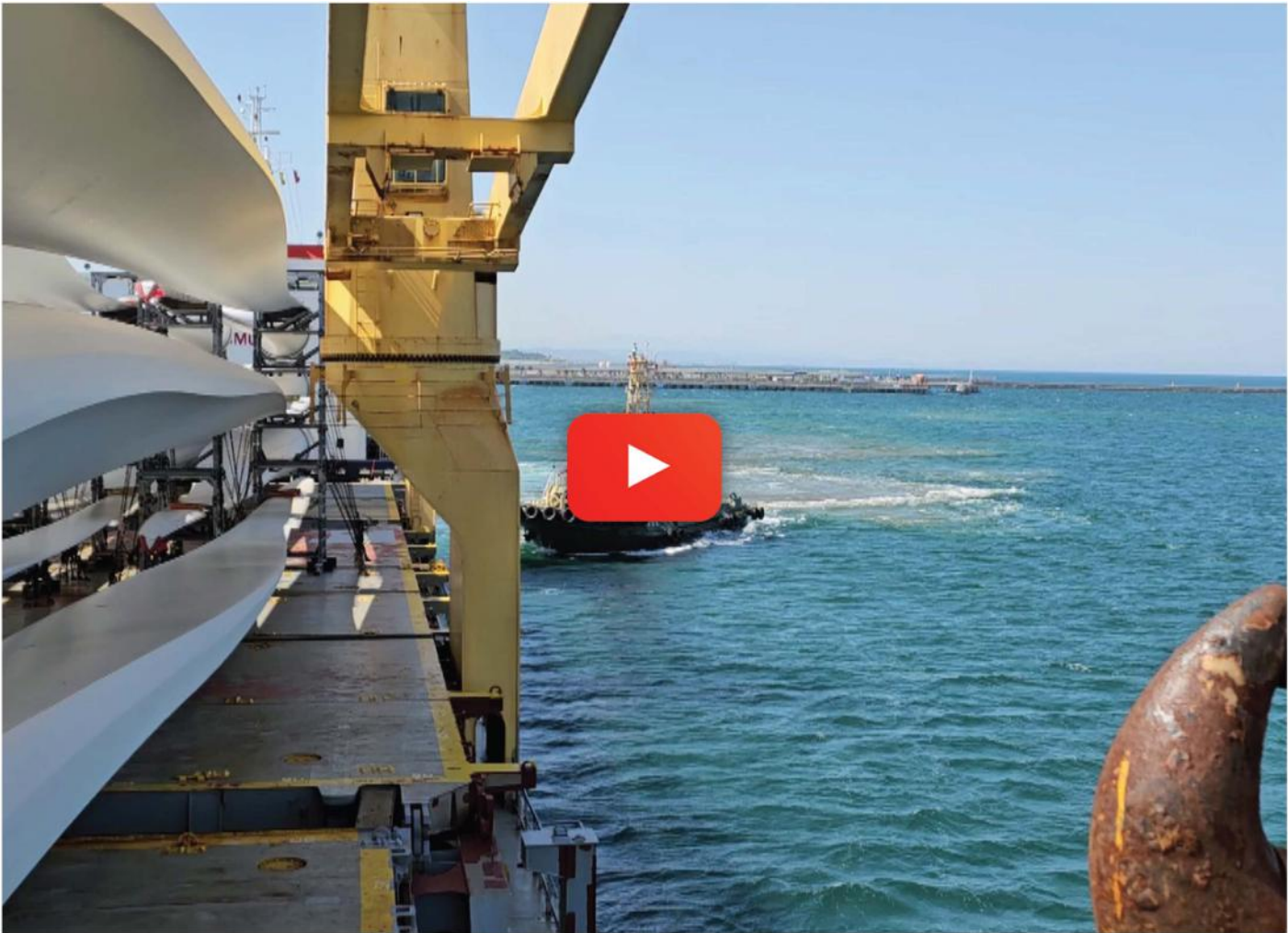
Website: [www.coli-shipping.com](http://www.coli-shipping.com)

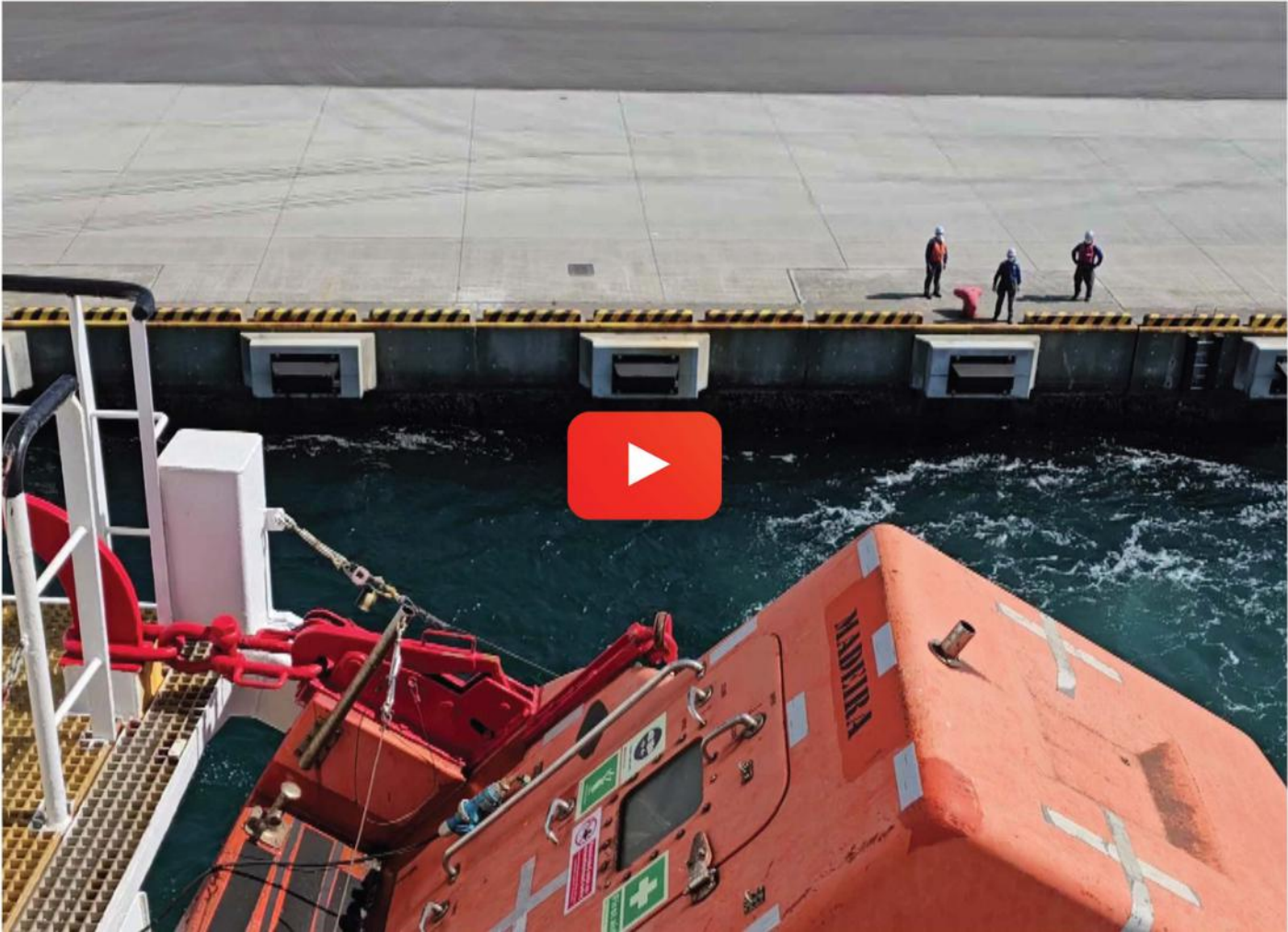
**CPC**  
Consolidated Project Carriers













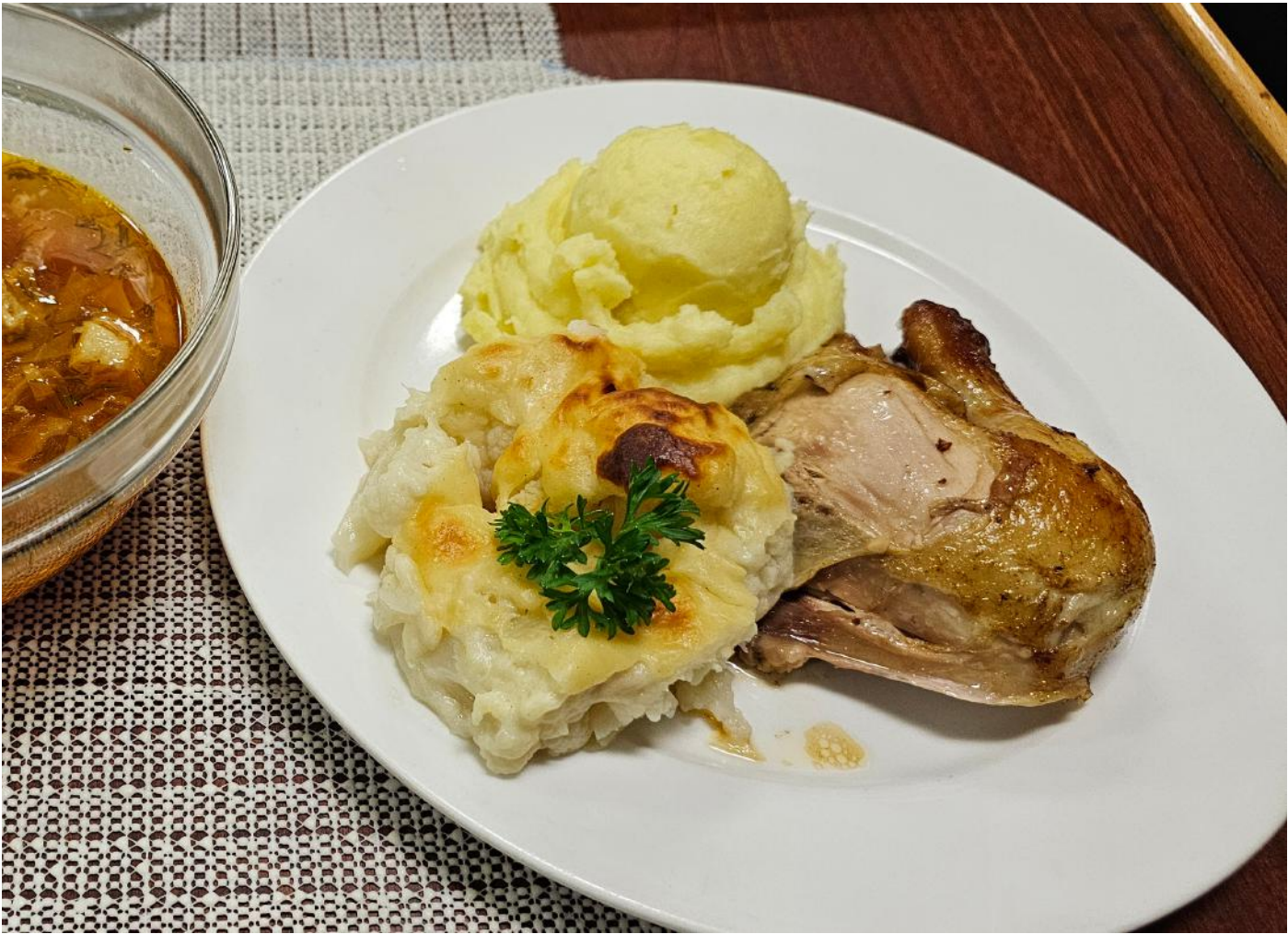




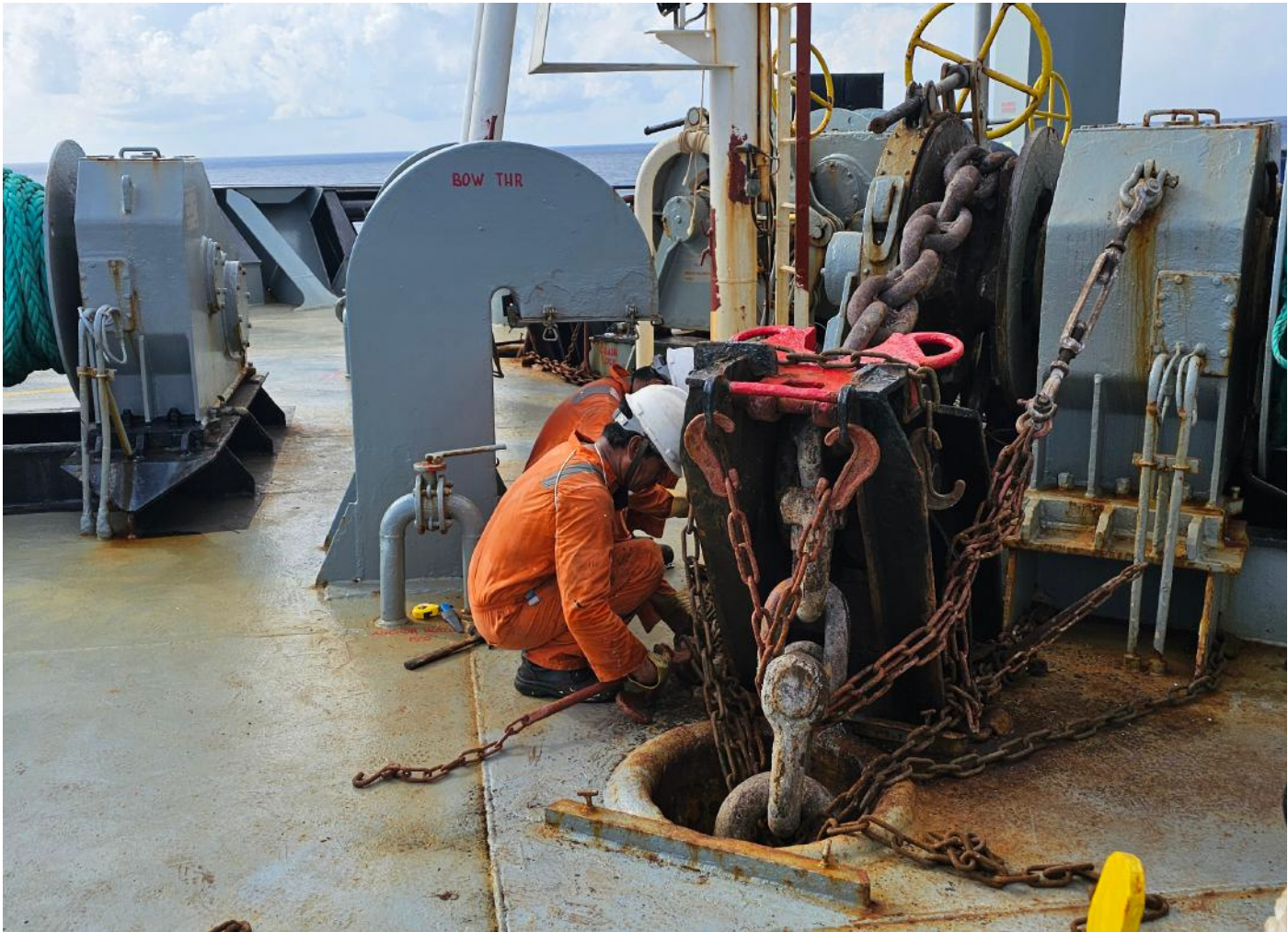
























# CABIN & MESS ROOM ONBOARD



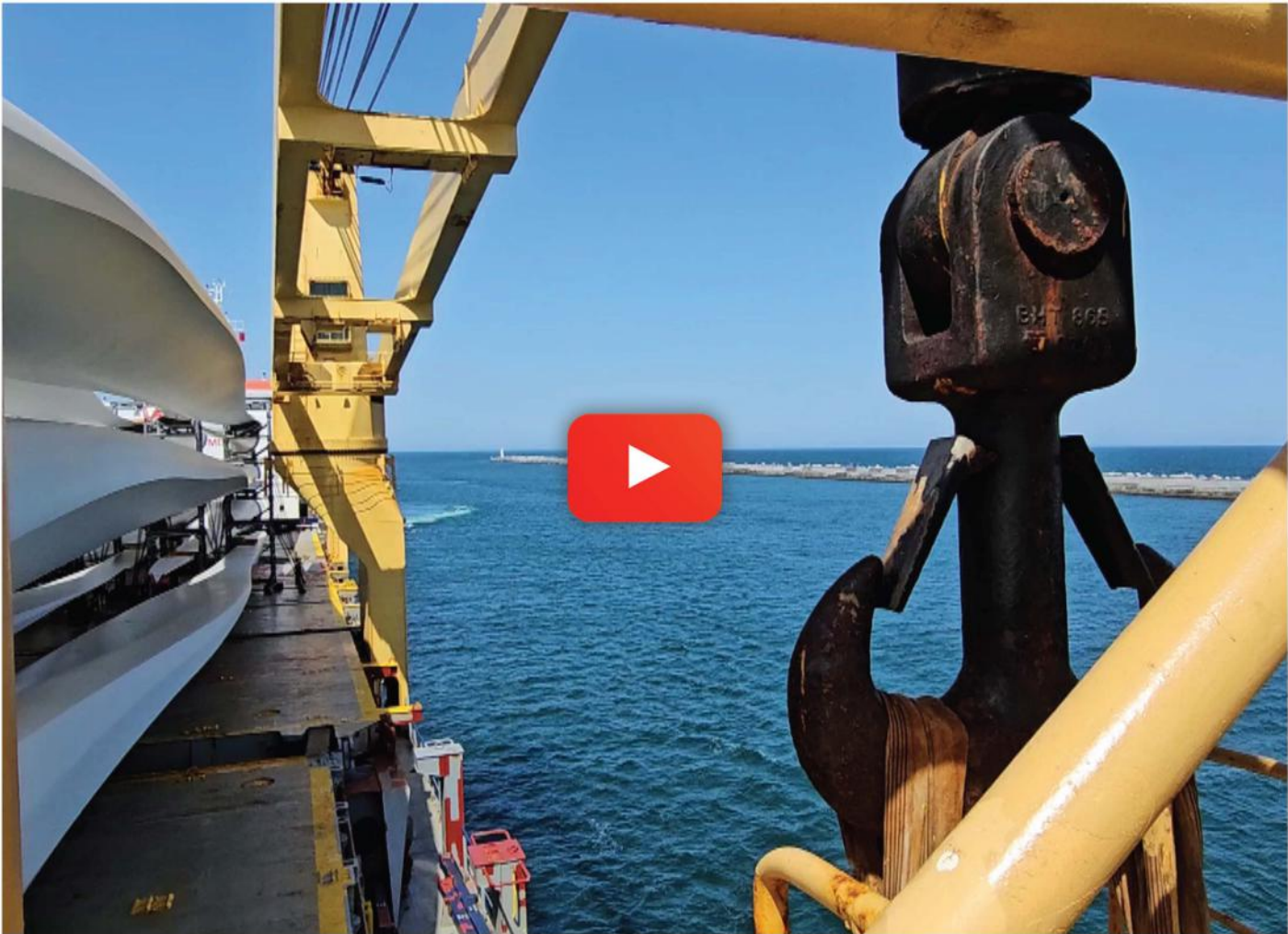
# HEAVY WEATHER

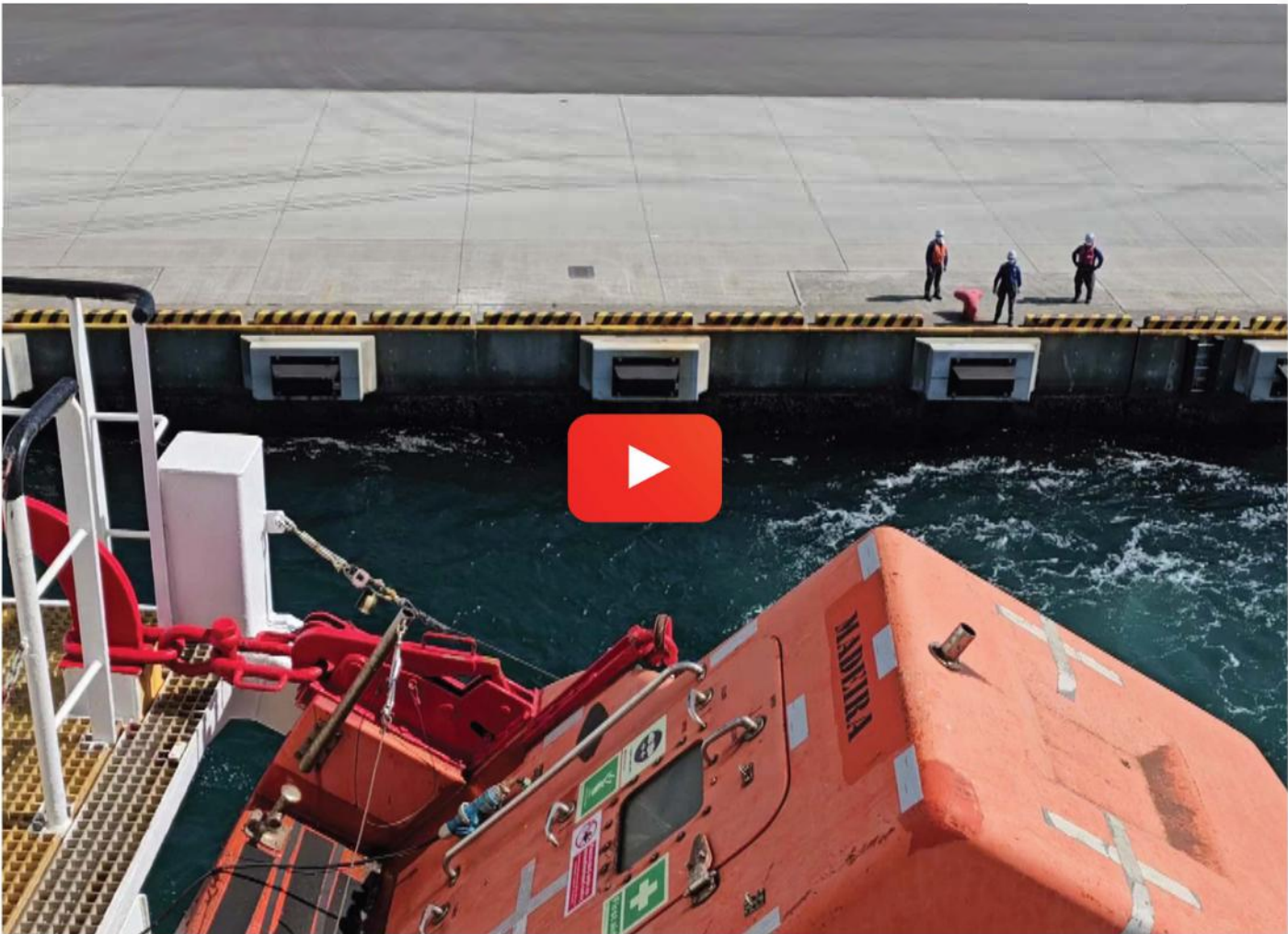


# ARRIVED AND ALONGSIDE AFTER 49 DAYS OF SAILING















GLOBAL READERS

NEUTRAL COVERAGE

IN-DEPTH INTERVIEWS

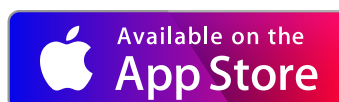
# PROJECT CARGO Weekly

## 40,000+ GLOBAL RECIPIENTS

✓ Written & Video Interviews

✓ Newsletter      ✓ Podcast Episodes

[www.projectcargo-weekly.com](http://www.projectcargo-weekly.com)



# THE HISTORY OF COLI SHIPPING IN JAPAN

**"ABB VANESSA" V. 049 Took you to Soma, Pacific side of Honshu. The fact that this voyage had to go via Cape of Good Hope was of course responsible that it took a bit longer. Usually we are in about 32/34 days in Japan from the last European port.**

**We came to Tokyo more than 40 years ago and developed a very successful relation with my good friend and partner Katsumi Tanaka. Already in the 1980s he became our agent, at that time based on smaller tonnage about 6 – 8.000 tons with cranes up to 2 x 80 and then later 2 x 120 tons capacity.**

**In the early 1990s we started to work with SAL and became their agent in Japan, which did last for about 20 years, actually a bit less, but we continued to work with them even when the agency in Japan was taken over by them-selves, resp. "K" Line, who bought SAL in steps 2007 and 2012.**

**Already from the early 2000s we operated CPC with about 6 charter vessels from Europe to Japan/Korea and vice versa. In 2007 that was the year when "K" Line bought SAL, we established ABB Asia Breakbulk (Singapore) Pte Ltd., in cooperation with Normed Antwerp/Istanbul.**

**Before that we had established Consolidated Pool Carriers (Asia) Co. Ltd., Tokyo, in partnership with Katsumi Tanaka. That company is existing now in its 27th year, while the cooperation with Tanaka San has already been going on since 4 decades.**



The early days in Tokyo with young Kai in the team

# THE HISTORY OF COLI SHIPPING IN JAPAN

**In the meantime Kai Friedrich is now already for more than 20 years in Singapore.**

**In Tokyo we have a team of 6 people. Last year Takeshi Shiragami came back from Hamburg, where he had been working with us for more than 5 years and became a Director to CPC Tokyo.**

**Recently we have also started our activities in the dry bulk sector, since we have done already with COLI Bulk Carriers GmbH in Hamburg a number of very interesting voyages out of Japan and Far East into the Arab Gulf / Middle East, but mainly to Europe.**

**Our activities in Japan and Asia are a very important part of the COLI Group, now with offices in Tokyo, Seoul, Shanghai and Singapore, where we started to work from our own office in 1990. The offices in Europe were established as follows:**

- **1974 Hamburg and Bremen**
- **1977 Antwerp**
- **1980 Rotterdam**

**In the meantime we are also in Hellerup/Copenhagen, Istanbul and with 3 offices in Brazil – Sao Paulo, Itajai and Rio de Janeiro in partnership with Gustavo Murari, whom you have met this week at Breakbulk Europe in Rotterdam.**

**As from July Alain Akavi and Felix Peinemann will take over, and I am going to semi-retire. Alain and Felix have already for some time been part of the Board of Directors and are the right people to continue COLI's development.**

**Best regards.**

**Herbert Loesing**





# PROJECT CARGO WEEKLY

Interviews with Project Forwarding and Shipping Industry Professionals

GET THE PCW MOBILE APP



FOLLOW PCW



[www.projectcargo-weekly.com](http://www.projectcargo-weekly.com)

Copyright 2024 - Project Cargo Weekly

Part of CLC Projects Group

This work is licensed under a Creative Commons Attribution-NonCommercial-NoDerivs 3.0 Unported License.