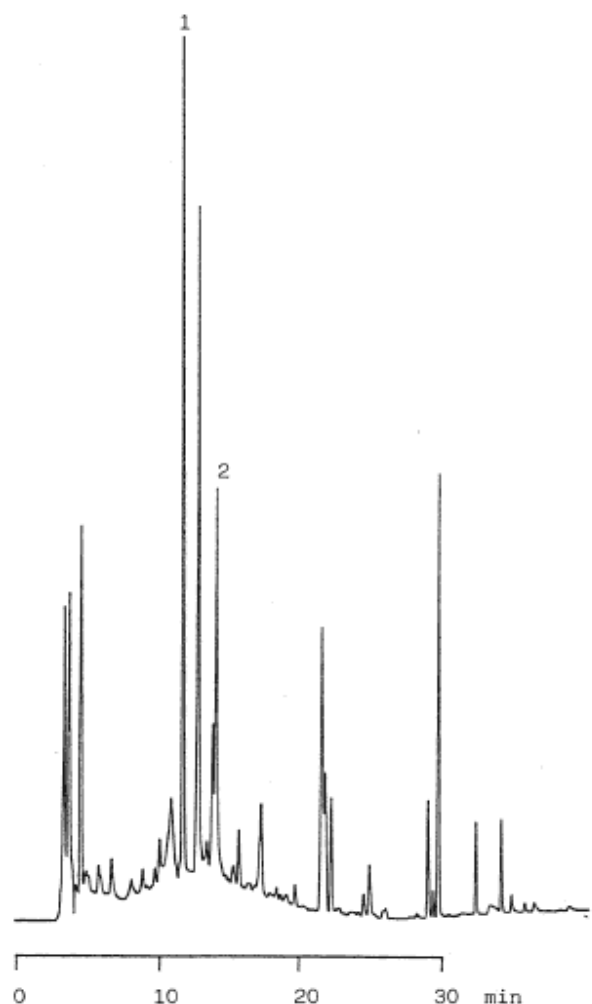


InertSearch™ for LC

Inertsil® Applications

Rhei rhizoma

Data No. LA129-0000



Column : Inertsil C8
5 μ m
150 \times 4.6mm I.D.

Column Cat. No. : 5020-01201

Eluent : A: CH₃CN
B: 40mM NaClO₄
A/B 15/85?(20min) \rightarrow 40/60
 \rightarrow (10min)?90/10

Flow rate : 1.0 mL/min.

Col. Temp. : 40°C

Detection : UV 254 nm

Injection Vol. :

Sample :

Solutes : 1. Sennoside B
2. Sennoside A