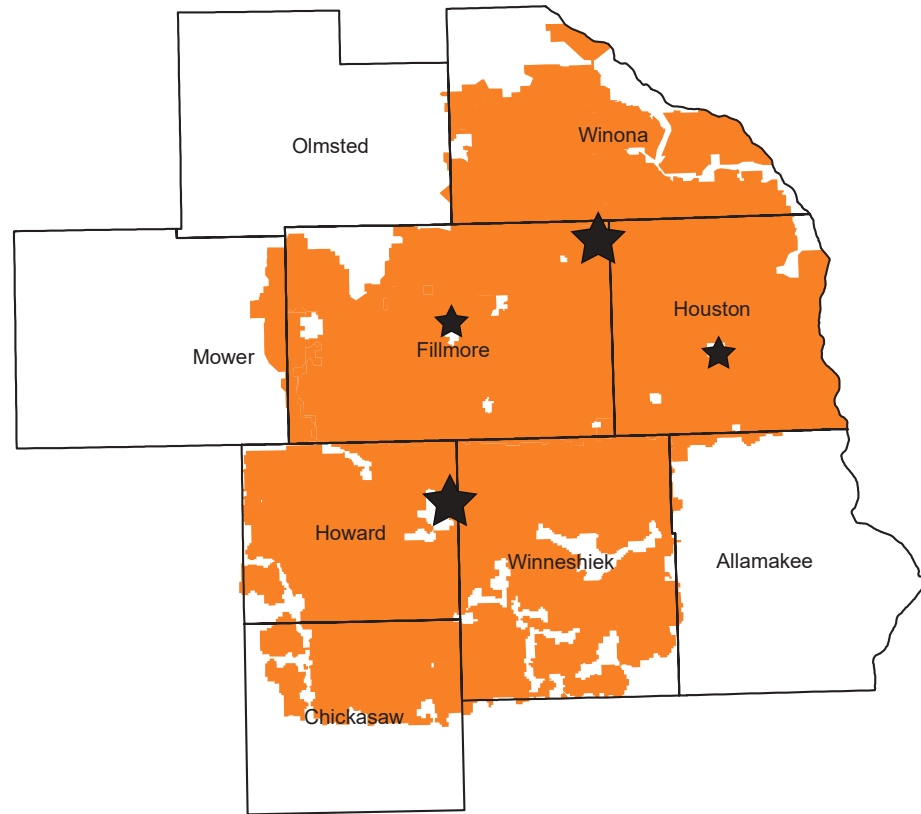


MiEnergy Cooperative is an electric distribution cooperative serving southeastern Minnesota and northeastern Iowa. It has offices in Cresco and Rushford, and outposts in Caledonia and Preston.



**23,469 METERS** 5,579 miles of power line  
**3.45 members per mile of line**

As a cooperative, MiEnergy's board of directors is made of 10 local members who create policies to lead the business in a way that benefit all members, not a handful of investors residing outside the service territory.

Since the merger in 2017, MiEnergy's board of directors has approved returning **\$17 MILLION** to members in the form of capital credits and special refunds.

## COMMITTED TO LOCAL COMMUNITIES



**\$12,315**  
**OPERATION ROUND UP**  
 Granting money to local, worthy causes.



**\$70,000**  
**COMMUNITY SERVICE SCHOLARSHIPS**  
 70 scholarships to high school students.



**\$14,740**  
**RECAP PROGRAM**  
 Helping members pay electric bills.



**\$20,819**  
**DONATIONS/ SPONSORSHIPS**  
 Supporting local communities and causes.



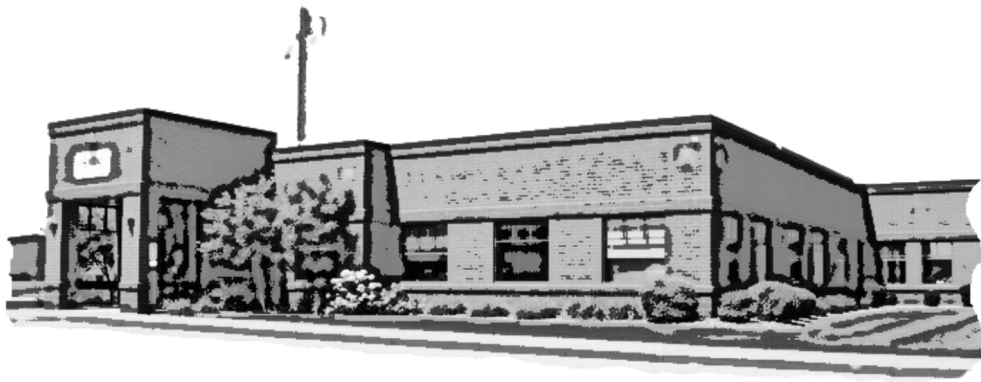
**\$4 MILLION**  
**ACTIVE ECONOMIC DEVELOPMENT LOANS**  
 Supporting business development in rural communities.

# 2023 SUSTAINABILITY DASHBOARD

*Our Mission:  
 We take care of our members by safely providing reliable, affordable and sustainable services.*

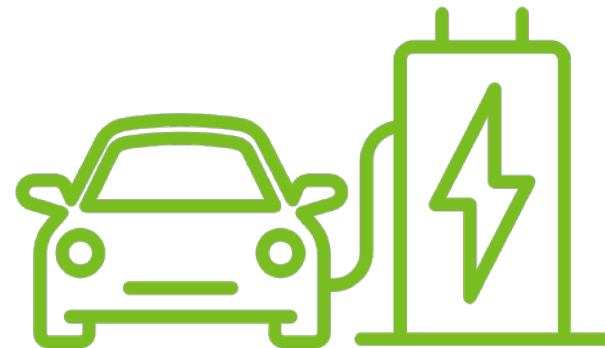
**mjenergy**  
 COOPERATIVE

Your Touchstone Energy® Cooperative  
 Cresco, Iowa | Rushford, Minn.  
 800-432-2285 | www.MiEnergy.coop



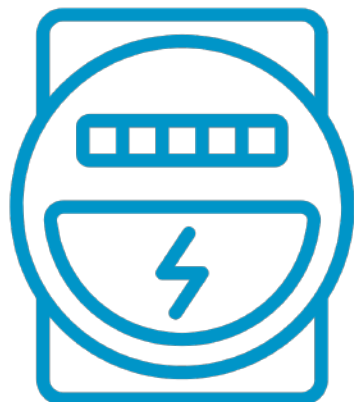
**920,800 kWh**

amount of energy used by the co-op's offices with 100% of it offset with renewable energy



**6,590 kWh**

amount of energy sold via MiEnergy's CHARGE-branded public electric vehicle chargers located in 7 local communities



**\$570,643**

credit received by MiEnergy for reducing energy use during peak energy times



**RELIABILITY**

**140**

AVERAGE NUMBER OF MINUTES OF POWER INTERRUPTIONS PER MEMBER

**1.06**

AVERAGE NUMBER OF POWER INTERRUPTIONS PER MEMBER

**99.9734%**

PERCENTAGE OF TIME THAT POWER IS AVAILABLE

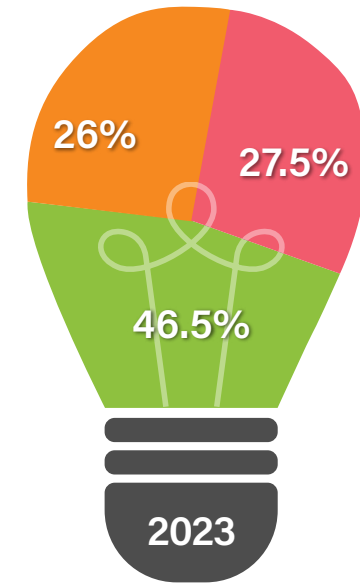
**56**

NUMBER OF HOURS OF ON-SITE SAFETY TRAINING FOR EVERY OPERATIONS EMPLOYEE

**SAFETY**



**ENERGY RESOURCES (NAMEPLATE CAPACITY)**



**46.5%** of members' electricity comes from **RENEWABLE SOURCES**

- Coal
- Natural Gas
- Wind, Solar & Others Renewables

The amount of electricity generated by renewable sources on MiEnergy's grid does the equivalent of **REMOVING** the greenhouse gas **EMISSIONS** of **5,884** gas-powered passenger vehicles driven for one year



**12.21 MW** (10% OF OUR ENERGY PEAK)

amount of electricity MiEnergy can reduce through energy management programs