

# AVON

CAMPAIGN 13

+ SPECIAL  
OFFER  
DETAILS INSIDE

pool party!  
bugs not invited.



hold everything!



free

with any 2 Bug Guard purchases,  
pages 3-7. Limited quantities.

### Embrace Earth's Element Dry Bag

Waterproof bag features roll-top closure with buckle and adjustable/removable shoulder strap. Perfect for outdoor activities to keep valuables dry. Not intended for prolonged submersion. PVC with polyester trim. Wipe clean with damp cloth. Holds 5.3 quarts. One size. 7" L x 7" W x 15" H. Fully extended strap, 42½" L.

**\$25 value** not sold separately





# sun+bugs+water

## GENTLE BREEZE water-resistant plus SPF

- repels mosquitoes that may carry and transmit the Zika virus
- DEET-free / PABA-free
- no need to wash off
- water-resistant
- SPF 30
- with aloe & vitamin E
- dermatologist-tested



**Bug Guard Plus Anti-Itch Spray**  
Provides temporary itch relief from insect bites.  
Does not repel insects. Use as directed.  
2 fl. oz. 510-032 reg. \$15

**\$11**

**Bug Guard Plus IR3535® Gentle Breeze SPF 30 Lotion**  
4.2 fl. oz. 525-452 reg. \$25

**\$20**



swing into summer...without bugs.

# sun+bugs EXPEDITION for all-in-one protection



- protects against mosquitoes, deer ticks, no-see-ums, sandflies, gnats and biting midges
- DEET-free/PABA-free
- water-resistant
- SPF 28 & SPF 30

## BUG GUARD PLUS IR3535® EXPEDITION

No need to wash off. Dermatologist-tested.

### Aerosol Spray SPF 28

Repels mosquitoes that may transmit West Nile virus for 8 hours. Repels deer ticks that may transmit Lyme disease for 12 hours. 4 oz. net wt. Dermatologist-tested. 521-370 reg. \$25

**\$20**

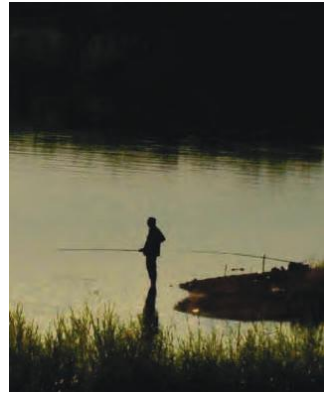
### Pump Spray SPF 30

Repels mosquitoes that may transmit West Nile virus for 8 hours. Repels deer ticks that may transmit Lyme disease for 10 hours. 4 fl. oz. 545-969 reg. \$25.25

**\$20**

free  
**WATERPROOF BAG**  
 Details, page 2

Keep products out of reach of children. Must be applied by an adult. Read and follow label directions and precautions.



s'more sunsets. less bugs.

# dawn+dusk

PICARIDIN for when bugs are most active



- protects against mosquitoes, deer ticks, sandflies, no-see-ums, gnats, biting midges and black flies
- repels deer ticks that may carry and transmit Lyme disease
- DEET-free/PABA-free
- with vitamin E + aloe\*

## BUG GUARD PLUS PICARIDIN

### Aerosol Spray\*

Repels mosquitoes for 6 hours, deer ticks for 7 hours. 4 oz. net wt. **315-243** reg. \$25

**\$20**

\*Does not contain aloe.

### Family-Size Pump Spray

Repels mosquitoes for 8 hours, deer ticks for 12 hours. 8 fl. oz. **510-578** reg. \$25.50

**\$20**

### Pump Spray

Repels mosquitoes for 8 hours, deer ticks for 12 hours. 4 fl. oz. **014-955** reg. \$19.25

**\$14**

### Towelettes

Repels mosquitoes for 8 hours, deer ticks for 12 hours. Resealable bag. Each towelette, 9" L x 5½" W. Each, 3 fl. oz. **269-562** reg. \$17

**\$13 PACK OF 8**

free  
WATERPROOF BAG  
Details, page 2

Keep products out of reach of children. Must be applied by an adult. Read and follow label directions and precautions.

## LEGENDARY HYDRATION SINCE 1961

SAME FORMULA, NEW LOOK.

With jojoba oil, a botanical extract that mimics skin's natural oils.

Infused with vitamins and minerals to keep skin silky soft and smooth.



### **Gelled Body Oil**

Dries to a silky finish.  
Fresh herbal scent.

6.76 fl. oz.

**025-011**

reg. \$17

**\$13**

### **Body Lotion**

24+ hours of  
moisturization.  
Fresh herbal scent.

11.8 fl. oz. **116-645**

reg. \$17

**\$13**

### **Hand Cream**

Fresh herbal scent.  
3.4 fl. oz. **025-050**

reg. \$8

**\$6**

### **Beauty Bar Soap**

Fresh herbal scent.  
3.17 oz. net wt.

**562-744**

reg. \$5

**\$4**

# The Original.

with 48 hours of moisturization\*



99%\*\* AGREED SKIN  
FELT DEEPLY MOISTURIZED,  
SOFTER AND SMOOTHER



\*Bath Oils only. \*\*Based on a consumer-perception study of 32 participants who used Bath Oil.

Not just for baths. Locks in moisture during your shower. Softens damp skin after a shower.

**Bonus-Size Bath Oil**  
Fresh herbal scent.  
24.6 fl. oz.  
116-540 reg. \$35  
**\$27**

**Bath Oil**  
Fresh herbal scent.  
16.9 fl. oz.  
110-499 reg. \$26  
**\$20**

## A SPICY FLORAL FAVORITE GETS A MAKEOVER

SOFT & SENSUAL, SAME FORMULA, NEW LOOK.

With argan oil, so precious it's called "liquid gold." Packed with vitamin E, it helps to visibly restore skin's luster and keep it sensually soft.



### Body Lotion

24+ hours of moisturization.  
11.8 fl. oz.

**204-127**  
reg. \$17

**\$13**

### Gelled Body Oil

Dries to a silky finish.  
6.76 fl. oz.

**160-237**  
reg. \$17

**\$13**

### Beauty Bar Soap

Suitable for daily use on face, body and hands.  
3.17 oz. net wt.

**160-571**  
reg. \$5

**\$4**

### Hand Cream

Hands feel soft and moisturized. 3.4 fl. oz.

**160-610**  
reg. \$8

**\$6**

# Skin so Soft & Sensual.

with 48 hours  
of moisturization\*

99%\*\*  
AGREED  
SKIN LOOKED VIBRANT,  
NATURALLY RADIANT AND  
MORE SUPPLE



\*Bath Oils only. \*\*Based on a consumer-perception study of 32 participants who used Bath Oil.

### Bonus-Size Bath Oil

48 hours of  
moisturization.  
Use during or after bath  
or shower. 24.6 fl. oz.  
204-108 reg. \$35

**\$27**

### Bath Oil

48 hours of  
moisturization.  
Use during or after bath  
or shower. 16.9 fl. oz.  
204-112 reg. \$26

**\$20**

**Original  
Bath Oil Spray**  
48 hours of  
moisturization.  
Locks in hydration.  
5 fl. oz. **174-938**  
reg. \$19  
**\$14**



Packaging may vary.

**Soft & Sensual  
Shower Gel**  
5 fl. oz. **914-710**  
reg. \$9  
**\$6**



**Original  
Shower Gel**  
5 fl. oz.  
**914-580**  
reg. \$9  
**\$6**



**Original  
Bonus-Size  
Shower Gel**  
Cleanses and  
hydrates.  
33.8 fl. oz.  
**433-444**  
reg. \$19  
**\$15**



**Soft & Sensual  
Bonus-Size  
Shower Gel**  
33.8 fl. oz.  
**018-142**  
reg. \$19  
**\$15**



**Original  
Bonus-Size  
Body Lotion**  
24+ hours of  
moisturization.  
33.8 fl. oz.  
**967-093**  
reg. \$26  
**\$20**



**Soft & Sensual  
Bonus-Size  
Body Lotion**  
24+ hours of  
moisturization.  
33.8 fl. oz.  
**746-210**  
reg. \$26  
**\$20**



# shake. spray. soften.

A refreshing kiss of glowing hydration for a new era of softness.



**NEW**

## LIMITED EDITION

### Skin So Soft Bi-Phase Oil Mist

Double-action oil mist blends nourishing oils with a refreshing antioxidant serum, in an ultrafine spray for a veil of all-over hydration. Instantly leaves skin looking soft, silky and radiant. Each, 4 fl. oz.

#### Original

With jojoba oil.  
Fresh herbal scent.

**202-947**

#### Soft & Sensual

With argan oil.  
Warm spicy floral  
scent. **207-092**

reg. \$24

**\$18 each**

## NOURISHING OILS

**Grape Seed Oil** With vitamin E, it's lightweight, fast-absorbing and helps soften with a non-greasy feel.

**Rapeseed Oil** Rich in omega 3 and 6 fatty acids, it helps support moisture barrier for a silky-smooth feel.

**Carrot Seed Oil** Packed with antioxidants, it helps visibly even skin tone and enhance skin's natural radiance.

**SKIN SO SOFT  
ORIGINAL SET**

**Body Lotion**  
24+ hours of moisturization.  
11.8 fl. oz.  
**\$17 value**

**Gelled Body Oil**  
Dries to a silky finish. 6.76 fl. oz.  
**\$17 value**

**Hand Cream**  
3.4 fl. oz.  
**\$8 value**

**ALL 3  
FOR  
\$22.49**

**\$42 VALUE**  
792-450



**SKIN SO SOFT  
SOFT & SENSUAL SET**

**Body Lotion**  
24+ hours of moisturization.  
11.8 fl. oz.  
**\$17 value**

**Gelled Body Oil**  
Dries to a silky finish.  
6.76 fl. oz.  
**\$17 value**

**Hand Cream**  
Hands feel soft  
and moisturized..  
3.4 fl. oz.  
**\$8 value**

**ALL 3  
FOR  
\$22.49**

**\$42 VALUE**  
793-313



**Fresh & Smooth  
Facial Hair  
Removal Cream**  
With meadowfoam  
oil. Dermatologically  
tested. 1 fl. oz.  
**562-543**  
reg. \$13  
**\$10**



*smooth away  
unwanted hair,  
gently and  
easily*



**Fresh & Smooth  
Body Hair Removal Cream**  
4.2 fl. oz. **562-467**  
reg. \$10  
**\$8**



## SKIN SO SOFT PURE NATURE HAIR COLLECTION

Eucalyptus mint scent • Sustainable\* packaging

### Nourishing Shampoo

With panthenol, known to help moisturize, and citric acid, known to help balance the pH level of the scalp. 12 fl. oz. **290-074** reg. \$23

**\$18 \$9.99**

### Nourishing Conditioner

With panthenol, known to help moisturize and visibly improve elasticity. Hair looks smooth, healthy and shiny. 12 fl. oz. **290-089** reg. \$23

**\$18 \$9.99**

### Intense Nourishing Hair Mask

With panthenol, known to help moisturize and visibly improve elasticity. Hair looks smoother and stronger. 8 fl. oz. **290-131** reg. \$23

**\$18 \$9.99**



\*Shampoo and Conditioner bottles: 95% post-consumer recycled material, excluding cap. Hair Mask tube: 55% post-consumer recycled material, excluding cap.

### Pure Nature Body Revitalizing In-Shower Body Lotion

Hydrating and softening lotion. Apply onto wet skin after shower or bath.

8 fl. oz. **633-857** reg. \$22

**\$17 \$9.99**

Tube made from 55% post-consumer recycled material, excluding cap.



### Calming Lavender Body & Bath Oil

Antioxidant-infused with a luxe blend of lavender and chamomile essential oils, plus jasmine extract. Skin feels so soft and supple. 11.8 fl. oz. **511-354** reg. \$32

**\$25 \$13.99**





Packed with vitamin E, argan oil helps to restore skin's radiant luster and keep skin irresistibly soft.

**Radiant Moisture Bonus-Size Bath Oil**  
 Hydrates during or after bath or shower.  
 24.6 fl. oz. **059-497** reg. \$35  
**\$27**

**Comforting Shea Bath Oil**  
 With shea butter and signature oils. Vanilla, sandalwood and musk scent.  
 16.9 fl. oz. **015-071** reg. \$24  
**\$18 \$13.49**

**Radiant Moisture Replenishing Hand Cream**  
 3.4 fl. oz.  
**776-561** reg. \$8  
**\$6 \$4.49**

## Skin So Soft +

Advanced bath and body collections with luxurious oils infused with high-performance skin care ingredients for powerful results.

### Body Lotion

With squalane, panthenol, niacinamide and sea buckthorn oil, it helps visibly boost elasticity, improve skin tone and lock in lasting moisture—leaving your skin looking soft, smooth, plump and radiant. 48-hour hydration! Light floral scent. 11.8 fl. oz. **084-129** reg. \$28

**\$16**

### Shower Gel

Hydrating and refreshing, it contains nourishing soybean and pomegranate-seed oils for the look of soft, silky-smooth and radiant skin. Light floral scent. 8 fl. oz. **082-680** reg. \$23

**\$15**

### Bath & Body Oil

48-hour hydration! With squalane to help keep skin looking soft and supple, plus soybean and sea buckthorn oils to help visibly boost radiance and even tone for a healthy-looking, luminous glow. Apply during or after your bath or shower. Light floral scent. 11.8 fl. oz. **087-329** reg. \$38

**\$22**

### Facial Bar

**Collagen & Goat Milk**  
Deeply hydrates.  
3.1 oz. net wt.

**160-916**

reg. \$6

**\$5**



Skin So Soft +

# Firm Up

WITH COLLAGEN PEPTIDE

Introducing the latest collection, formulated to help visibly plump skin and restore firmness and resilience while deeply hydrating.

## COLLAGEN AMINO ACIDS

Help improve skin elasticity and maintain firmness.

## ALOE LEAF EXTRACT

Helps soothe and hydrate skin.



Formulated without mineral oils, sulfates and parabens.

Skin So Soft +  
**HYDROPLENISH**  
with hyaluronic acid

**Body Lotion**

48-hour moisturization. Replenishing body lotion with hyaluronic acid and panthenol to help boost hydration and visibly restore skin's natural glow. Soft floral scent. 11.8 fl. oz. **764-160** reg. \$28

**\$16**

**Shower Gel**

With sunflower seed oil and cupuacu butter to soften and smooth while it helps to boost hydration and restore skin's natural glow. Soft floral scent. 8 fl. oz. **763-967** reg. \$23

**\$15**

**Body Scrub**

Exfoliating body scrub with sunflower seed oil and cupuacu butter to soften and smooth while it helps to boost hydration and restore skin's natural glow. Soft floral scent. 8.2 oz. net wt. **763-857** reg. \$25

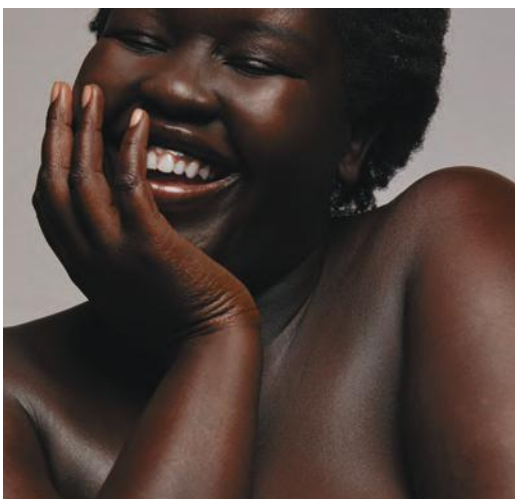
**\$15**

**Bath & Body Oil**

48-hour moisturization. With hyaluronic acid, sunflower seed oil and cupuacu butter to boost hydration and help skin look dewy with a natural glow. Soft floral scent. 11.8 fl. oz. **763-971** reg. \$38

**\$22**





**Skin So Soft +  
RADIANT RENEW  
with retinol**



**Shower Gel**

Infused with argan oil, an abundant source of fatty acids, antioxidants and vitamin E, to help skin feel softer, smoother and rejuvenated. Fresh green floral scent. 8 fl. oz. **051-458** reg. \$23

**\$15**

**Body Lotion**

48-hour moisturization! With intensely hydrating hyaluronic acid. Skin looks softer, smoother, plumper and more radiant. Fresh green floral scent. 11.8 fl. oz. **051-974** reg. \$28

**\$16**

**Bath & Body Oil**

48-hour hydration! With squalane to help boost moisturization. Skin looks smooth with a radiant glow. Apply during or after a bath or shower. Fresh green floral scent. 11.8 fl. oz.

**051-955** reg. \$38

**\$22**

**Facial Bar Retinol & Vitamin C**

Helps visibly even tone, brighten and enhance skin clarity. 3.1 oz. net wt. **160-639** reg. \$6

**\$5**



**Moisture Therapy  
Intensive Healing & Repair  
All Over Rescue Balm Stick**

24-hour moisturization in a convenient, mess-free, glide-on stick. Fragrance-free. Apply anywhere on body, face and even lips. Great on the go.

.63 oz. net wt. 470-004 reg. \$20

**\$15**



**Moisture Therapy  
Intensive Healing & Repair  
All Over Rescue Balm**  
24-hour moisturization for extra-dry skin. With soothing and smoothing avocado oil and shea butter. Apply anywhere on body, face and even lips to seal in moisture. Fragrance-free. 2.5 fl. oz. 419-840 reg. \$15

**\$12**

**Moisture Therapy  
Intensive Healing & Repair  
Moisturizing  
Lip Balm**

.14 oz. net wt.

562-869

reg. \$4

**\$3**



**Moisture Therapy  
Intensive Healing & Repair  
Extra Strength Cream**

24-hour moisturization.

Fragrance-free. 5.3 oz. net wt. 224-982

reg. \$10

**\$7.50**



**NEW**

**Moisture Therapy  
Intensive Healing & Repair  
Silicone Glove Hand Cream**

For normal to dry skin. Creates invisible "glove" that locks in moisture through hand washings. With vitamin E and almond oil. Delicately scented. 3.4 fl. oz. 562-907 reg. \$8

**\$6**



**Moisture Therapy  
Intensive Healing & Repair  
Hand Cream**

For extremely dry skin. Moisturizes through hand washings. Fragrance-free.

4.2 fl. oz. 845-982

reg. \$8

**\$6**



# need more? get more... with bonus-size lotions.

**Moisture Therapy  
Bonus-Size Body Lotion**  
Each, 33.8 fl. oz. reg. \$26  
**\$20 each**

**Intensive Healing & Repair  
Bonus-Size Body Lotion**  
72-hour moisture for  
extra-dry skin.  
Fragrance-free.  
**487-283**

**Daily Skin Defense  
Bonus-Size Body Lotion**  
Helps restore moisture  
to everyday dry skin.  
**725-793**

**Calming Relief  
Bonus-Size Body Lotion**  
Soothes and relieves  
dry, itchy skin.  
Fragrance-free.  
**639-802**

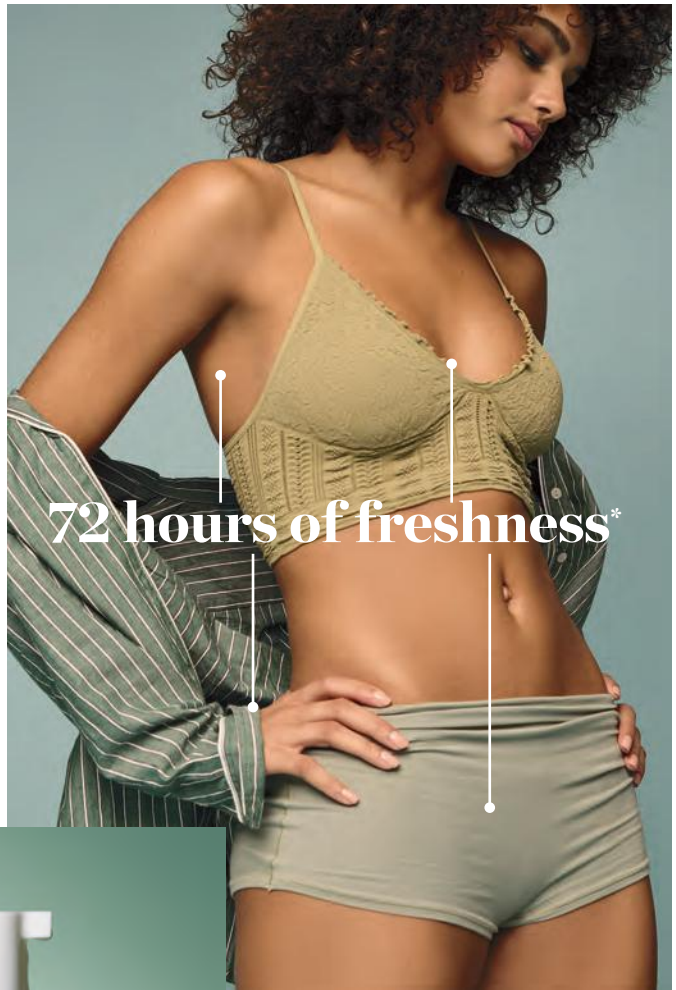


Introducing the  
**Fem Bliss Collection.**

Empowering women  
to feel freshly clean,  
comfortable, cared  
for and confident  
in their own skin.

Pure bliss for  
every part of you.

**FOR PITS, PRIVATES  
AND MORE**



**72 hours of freshness\***



**new**

**Fem Bliss Full Body Cream Deodorant**

With a refreshing cucumber scent, this lightweight, non-greasy cream dries clear and helps eliminate odors. Contains panthenol and vitamin E. Formulated without aluminum, dyes, parabens and phthalates. 3 fl. oz. **649-010** reg. \$24

**\$18**

**Fem Bliss Foaming Feminine Wash**

Aloe-based, pH-balanced, clean moisturizing body wash helps eliminate odors. Formulated without BPA, parabens, phthalates, synthetic dyes and fragrances, alcohol and animal-derived ingredients. 5 fl. oz. **648-550** reg. \$24

**\$18**

\*With use of Fem Bliss Full Body Cream Deodorant.

## Hit Pause.

Look and feel your best through perimenopause and menopause. A cooling rose-scented collection formulated with Superfood Amla Berry Extract.

new

### Hit Pause Neck & Chest Serum

Crepey skin on your neck and décolleté? This hydrating and smoothing solution helps diminish dryness and sagging. With rose water, hyaluronic acid and niacinamide. Skin looks firmer, more toned and more radiant over time. Cooling and massaging roller applicator helps optimize absorption.

1.7 fl. oz. **646-910**

reg. \$30

**\$23**



### Hit Pause All Over Cooling Mist

Instant cooling refreshment for face or body to energize and hydrate. Spray anytime. 3.4 fl. oz. **264-336** reg. \$25

**\$20**

### Hit Pause Hydrating Body Cream

Lightweight, fast-absorbing moisturizer with panthenol to help soothe skin and combat dryness, boost elasticity and reduce the appearance of crepiness. 6.7 fl. oz. **263-990** reg. \$22

**\$17**

### Hit Pause Refreshing Wipes

Pre-moistened towelettes remove sweat and dirt from face, hands and body. No water or rinsing needed. Safe for external down-there places, armpits or anywhere you need to refresh. Rose scent. 30 wipes. **264-264** reg. \$13

**\$10**

**Senses Bubble Bath**  
 24 baths in every bottle.  
 Each, 24 fl. oz. reg. \$16  
**\$13 \$9.49 each**



Cherry Blossom  
929-211

Vanilla Cream  
875-669

Cucumber Melon  
688-950

Sensitive Skin  
875-400

Lavender Garden  
381-799

**Senses Lip Balm**  
 Strawberry.  
 .14 oz. net wt.  
 554-219  
 reg. \$4  
**\$3**



**Senses Lip Balm**  
 Cherry.  
 .14 oz. net wt.  
 554-223  
 reg. \$4  
**\$3**



**Senses Shower Gel**  
 Each, 5 fl. oz. reg. \$8  
**\$6 each**



Blushing  
Cherry Blossom  
921-847

Silky Vanilla  
248-140

Fresh Cucumber  
& Melon  
400-716

Juicy Pomegranate  
& Mango  
248-155



**NEW! LIMITED EDITION**

**SENSES  
COPACABANA COCONUT**  
Rich and refreshing.  
Coconut-fragranced.

**Bubble Bath**  
Up to 24 baths per bottle.  
24 fl. oz. **220-566**  
reg. \$18

~~\$14~~  
**\$10.49**

**Whipped Body Butter**  
With moisturizing shea  
butter, it leaves skin  
feeling deliciously smooth  
and delicately scented.  
6 oz. net wt. **220-676**  
reg. \$21

~~\$16~~  
**\$11.99**

All are dermatologically tested. Bubble baths  
are formulated without sulfates, parabens,  
phthalates, silicone and mineral oil.



**SENSES  
MANGO SAMBA SPLASH**  
Fruity and juicy. Mango-fragranced.

**Bubble Bath**  
Up to 24 baths per bottle.  
24 fl. oz. **220-642** reg. \$18

~~\$14~~ **\$10.49**

**Whipped Body Butter**  
With moisturizing shea butter,  
it leaves skin feeling deliciously  
smooth and delicately scented.  
6 oz. net wt. **220-695**  
reg. \$21

~~\$16~~ **\$11.99**

*soak up the*  
**Vibes**

**Rosemary Mint Hair Strengthening Oil**  
2-in-1 daily-use oil for hair and scalp. With essential oils, 99% derived from plants, plus biotin. Rosemary and mint blend. Hair feels fortified, nourished and refreshed. 2 fl. oz.  
542-845 reg. \$25

**\$20**

**Rosemary Mint Scalp Strengthening Tonic**  
With rosemary, mint, biotin, caffeine. Scalp feels revitalized, cooled. Hair looks thicker, stronger. 5 fl. oz. 544-427 reg. \$25

**\$20**

**Gua Sha Scalp Massager**  
For scalp, neck and body. Helps improve circulation for visibly strong, healthy hair. 100% wood. 542-960 reg. \$25

**\$28 \$14.99**

**3 FOR \$39.99**

\$75 value  
885-006



**Rosemary Mint with Biotin Dry Shampoo**  
Easy-to-use, mess-free puff applicator and fast-acting formula with a blend of rosemary, mint and biotin absorbs excess oil on scalp and at the roots. Hair looks clean and fresh between washes. Perfect on the go! Formulated without sulfates and parabens. 0.28 fl. oz. 078-787 reg. \$25

**\$20**



**Rosemary Mint Body Wash**  
Formulated with AHA/BHA/PHA and panthenol. 16.9 fl. oz. 544-446 reg. \$22

**\$17**

**\$12.49**



Organist **Rosemary + Mint** | *strengthening*

# fine strands need to feel stronger?

locks look fuller and feel reinforced with rosemary



With rosemary and biotin, to help to keep your scalp and hair looking healthy. Refreshing, cooling peppermint helps scalp feel revitalized.

**Strengthening Shampoo**  
542-974

**Strengthening Conditioner**  
542-993

Each, 16.9 fl. oz. reg. \$22

**\$17 each**

**BOTH FOR \$22.49**

\$44 value  
873-389

introducing

## ORGANIST Rosemary Mint + Biotin

This collection features invigorating rosemary, cooling mint and enriching biotin, plus gentle exfoliants to help fortify the scalp and promote the look of fuller, healthier hair from the root.

99%\* said  
product improved  
greasiness/oiliness  
in the scalp.

In 2 weeks  
scalp hydration  
improved over  
105%\*\*

**NEW**

### Scalp Exfoliating Detox Water

Use before shampoo to help gently exfoliate flakes, soothe dryness, clear excess oils and rejuvenate roots to reveal a cleaner and more balanced scalp environment for healthier-looking hair.

8.11 fl. oz.

197-970 reg. \$22

\$17

**NEW**

### Scalp Fortifying Oil in Serum

The exfoliating serum helps clear buildup and increase absorption of moisturizing and nourishing oil drops within the serum. Scalp feels more balanced and refreshed.

2 fl. oz.

185-339 reg. \$33

\$25

**BOTH  
FOR  
\$29.49**

\$55 value  
165-698



ORGANIST  
ROSEMARY MINT + BIOTIN  
MENTHE ROMARIN + BIOTINE  
— BLEND MÉLANGE —

SCALP EXFOLIATING  
DETOX WATER

EAU EXFOLIANTE  
DÉTOXIFIANTE  
POUR LE CUIR CHEVELU

FOR SCALP REFRESHING  
POUR RAFRAÎCHIR LE CUIR CHEVELU

240 mL / 8.11 fl. oz. U.S.

ORGANIST  
ROSEMARY MINT + BIOTIN  
MENTHE ROMARIN + BIOTINE  
— BLEND MÉLANGE —

SCALP FORTIFYING  
OIL IN SERUM

SÉRUM HUILEUX FORTIFIANT  
POUR LE CUIR CHEVELU

60 mL / 2.0 fl. oz. U.S.

\*Based on those who expressed an opinion in a consumer-perception study. \*\*In a clinical study.

Organist **Algae** | *replenishing*

# frizzies and split ends?

quench dry, frizzy strands and help mend split ends with kelp and seaweed complex

## Moisture Shampoo

Lightweight jelly formula deeply hydrates. Helps tame frizz and visibly reduce split ends for a polished look. 16.9 fl. oz. **286-410** reg. \$22

**\$17**

## Deep Moisture Hair Mask

Deep moisture and frizz control for dry hair. Intensely hydrates with hyaluronic acid. Hydro Green Pearls dissolve on contact. 6.7 fl. oz. **286-462** reg. \$21

**\$16**

**BOTH FOR \$23.49**

\$43 value  
937-474

## Jelly Body Wash

Hydro Green Pearls dissolve on contact to help hydrate as it cleanses. Dry, dull skin looks healthier and glowing. 16.9 fl. oz. **286-520** reg. \$22

**\$17**

## Whipped Body Cream

Intense, lasting moisture for soft skin with a youthful-looking glow. With 10% squalane to help support moisture barrier and visibly boost elasticity. 4.5 fl. oz. **286-591** reg. \$22

**\$17**

**BOTH FOR \$23.49**

\$44 value  
639-358



Organist Coconut + Peptides | *curl-defining*

# dry, curly, coily hair?

hydrate, detangle and smooth with coconut

## All-in-One Leave-in Conditioner

Lightweight spray instantly helps detangle. Helps control frizz and flyaways. Helps enhance silky shine and manageability. Helps hair feel less prone to breakage. Curls look defined. For all hair types. 5 fl. oz. **756-385** reg. \$21

**\$16**

## Deep Conditioning Hair Mask

Nutrient-rich formula helps visibly reduce breakage, tame frizz, strengthen strands and add luster. Curls look defined and bouncy. Hair looks smoother, shinier, healthier.

7.7 fl. oz. **756-586** reg. \$21

**\$16**

## BOTH FOR \$22.49

\$42 value

638-844



\*Results achieved using Organist with Coconut + Peptides All-in-One Leave-in Conditioner.



Organist Rice Water | *nourishing*

# dry, damaged hair?

add moisture for healthy-looking shine

**Damage Care Shampoo**

With biotin, ceramide, protein and 17 amino acids to deeply nourish each strand, restoring strength and resilience. Enriching rice water helps transform dry hair into a silky mane. 16.9 fl. oz. **381-803** reg. \$22

**\$17****Damage Care Treatment**

Perfect for hair in need of hydration and repair. Biotin, protein and 17 amino acids help nourish each strand from within. Hyaluronic acid and collagen help smooth hair for resilience and softness. 6.7 fl. oz.

**381-860** reg. \$22**\$17**

## BOTH FOR \$20.99

**\$44 value**  
908-521**Moisture Replenish Hair Mist**

Two-layer mist: a hydrating essence plus five plant oils, including jojoba and argan oils, for deep moisturization. Rice water, biotin, ceramide, protein and amino acids help revitalize, nourish and soften dry, damaged hair. Shake well before use.

Use on damp or dry hair.

2.7 fl. oz. **381-985**

reg. \$25

**\$20**

jasmine  
and  
freesia  
scent

# BRUSH UP ON STYLING

**Avon Detangling Comb**

504-820 reg. \$9

~~\$6.50~~ **\$4.49**

**Avon Blow-Dry Round Hairbrush**

504-800 reg. \$20

~~\$16~~ **\$11.99**

**Avon Detangling Hairbrush**

504-815 reg. \$14

~~\$11~~ **\$7.99**

**Avon Compact Hairbrush**

504-743 reg. \$12

~~\$9~~ **\$6.49**



**Organist Botanical Castile Soap  
Lavender Oil & Vitamin E**

With ingredients to help skin feel refreshed and promote a relaxing experience. Calming lavender scent. 16.2 fl. oz. **048-398** reg. \$19

**\$15**

**Organist Botanical Castile Soap  
Rose Water & Hyaluronic Acid**

Low-pH formula helps replenish soothing moisture. Crisp floral scent. 16.2 fl. oz. **348-100** reg. \$19

**\$15**

**ANY TWO  
FOR \$17.98**

\$38 value. Mix or match, any two for discount to apply, Organist Botanical Castile Soaps.



# GET LOST, ROOTS!

Touch up gray in seconds and extend time between salon visits. Instantly covers roots and even bare spots for a fuller look.

## Root Touch-Up

With scalp-nourishing black bean and ginseng. Built-in mirror. Travel-ready. Each, .25 oz. net wt. reg. \$20

**\$12 each**



Reddish  
Brown  
245-627



Light  
Brown  
244-642



Dark Brown  
245-213



Black  
245-251



Results are simulated.

SPONGE TIP  
APPLICATOR

MIRROR



Introducing  
**Schick Hydro Silk**  
 Super-easy  
 hair removal for  
 sensitive skin

❖ **2-in-1 Hair Removal Cream**

Helps to minimize ingrown hairs. Suitable for sensitive skin. Safe for use on legs, arms and underarms, and as a bikini hair removal cream for pubic area. Fresh, clean scent. With vitamin E.

- Includes:
- 8.4 oz. body hair removal cream
  - 1 spatula
- 609-356**  
 reg. \$15

**\$12**



❖ **Targeted Waxing Strips**

Ready to use—no warming needed. See longer-lasting results.\* With seaweed extract. Dermatologist-tested. For sensitive skin. Ideal size for brow, upper lip or bikini areas. Includes:

- 20 small and 20 medium pre-filled wax strips
- 4 finishing wipes with almond oil

**609-102** reg. \$15

**\$12**



❖ **Sugar Wax Roller**

Glides on easily. See longer-lasting results.\* With calendula oil. Gentle on sensitive-skin areas, like body hair and pubic hair. Water-rinsable. Dermatologist-tested.

- Includes:
- 2 post-wax soothing serum sachets
  - 5.1 oz. sugar wax roller
  - 10 reusable strips

**608-986** reg. \$15

**\$12**



\*Versus shaving.

❖ **Ultra Sensitive 5-Blade Disposable Razor**

Five Curve Sensing® blades. With Hydra-Boost Serum®, aloe and chamomile. Hydrates skin up to two hours after shaving. Dermatologist-tested. Skin-protection coating on blades and skin guards. Curved handle allows razor head to stay elevated to keep razor dry. Each razor lasts up to 32 days.† Includes:

- 2 women's disposable razors

**608-880** reg. \$11

**\$9**



Schick free mail-back recycling program ([www.edgewellrecycling.com](http://www.edgewellrecycling.com)).

†Based on shaving 2x/week.

❖ **Sugar Wax Wand**

Warms in hot water in minutes. Water-rinsable. Precision tip for sideburns, upper lip and brows. With calendula oil. Dermatologist-tested. For sensitive skin.

- Includes:
- 4 post-wax soothing serum sachets
  - 0.7 oz. sugar wax wand
  - 1 precision stick
  - 20 reusable strips

**614-146**  
 reg. \$15

**\$12**



**Himalaya Pink Salt Intensive Whitening Toothbrush (Large)**

Bristles infused with Himalayan pink salt for cleansing and gentle brightening. Large brush. High-tension bristles penetrate narrow gaps. **035-812** reg. \$9

**\$6.59**



**Himalaya Pink Salt Intensive Whitening Toothpaste (with Fluoride)**

Clinically tested to whiten teeth in one week. 24-hour stain resistance. With sodium fluoride to help strengthen enamel. Pink paste. Spearmint flavor. 4.2 oz. net wt. **382-283** reg. \$17

**\$12.99**



**Himalaya Pink Salt Whitening Toothbrush (Medium)**

Bristles infused with Himalayan pink salt for cleansing and gentle brightening. Medium-sized brush. High-tension bristles penetrate narrow gaps. **729-359** reg. \$8

**\$5.99**



**Himalaya Pink Salt Whitening Natural Salt Toothpaste (Fluoride-Free)**

Helps reduce plaque, whiten teeth and freshen breath. Contains essential minerals and bifidus essences. Pink gel. Spearmint flavor. 3.9 oz. net wt. **943-112** reg. \$12

**\$8.79**

Formulated without parabens, gluten and triclosan.



**Best of K-Beauty**

**Himalaya Pink Salt Purple Whitening Toothbrush**

Purple color fades as bristles wear, as reminder to replace. Clinically tested to remove 4X more interdental plaque.\* Bristles with 2X the elasticity clean narrow gaps between teeth and gum line. **383-165** reg. \$9

**\$6.59**



**Himalaya Pink Salt Purple Color Corrector + Intensive Whitening Toothpaste (with Fluoride)**

Advanced purple color-correcting paste. Clinically tested to reduce yellow stains after one use. Visibly whiter teeth in one week. 24-hour stain resistance. Vanilla mint flavor. 3.5 oz. net wt. **383-624** reg. \$17

**\$12.99**

Formulated without parabens, gluten, phthalates and triclosan.



\*Compared to LG H&H regular toothbrush with soft bristles.



**Foot Works  
Pedicure Tool  
592-712**

reg. \$12

**\$9.50**

- 4 in 1:
- Fine-grain file
  - Metal file
  - Pumice
  - Brush



**Foot Works  
Maximum Strength  
Cracked Heel Cream**

Transforms the look and feel of dry, cracked heels.

2.5 fl. oz.

**086-762**

reg. \$12

**\$9.50**



**Foot Works  
Intensive  
Callus Cream**

Softens and moisturizes dry, rough skin.

3.2 oz. net wt.

**851-310**

reg. \$12

**\$9.50**



**Foot Works  
Intensive Moisture  
Foot Cream**

Suitable for diabetics.

2.5 fl. oz.

**069-016**

reg. \$12

**\$9.50**



**Foot Works  
Arthritis Achy Foot  
and Muscle Cream**

Contains glucosamine and chondroitin.

2.5 fl. oz.

**208-400**

reg. \$12

**\$9.50**



**Foot Works Pedicure Kit**

Case, 3½" L x 4¾" W.

**121-029**

reg. \$17

**\$13**

Kit includes:

- Nail clipper
- Toenail clipper
- Scissors
- Small nail file
- Cuticle pusher





Imari 464-366    Haiku 809-060    Odyssey 740-250    Sweet Honesty 439-021    Timeless 885-302    Rare Pearls 906-897    Rare Gold 613-154



Far Away 891-376    Candid 656-095    Night Magic Evening Musk 862-590    Cool Confidence Original 872-469    Cool Confidence Baby Powder 427-275    Feelin' Fresh Original 907-750



On Duty Sport 875-726    On Duty Unscented 464-351    On Duty Original 393-970    Black Suede 813-567    Mesmerize 875-874    Wild Country 656-080

**Roll-On  
Anti-Perspirant  
Deodorant**  
Each, 2.6 fl. oz.  
reg. \$6.25  
**\$5 each**

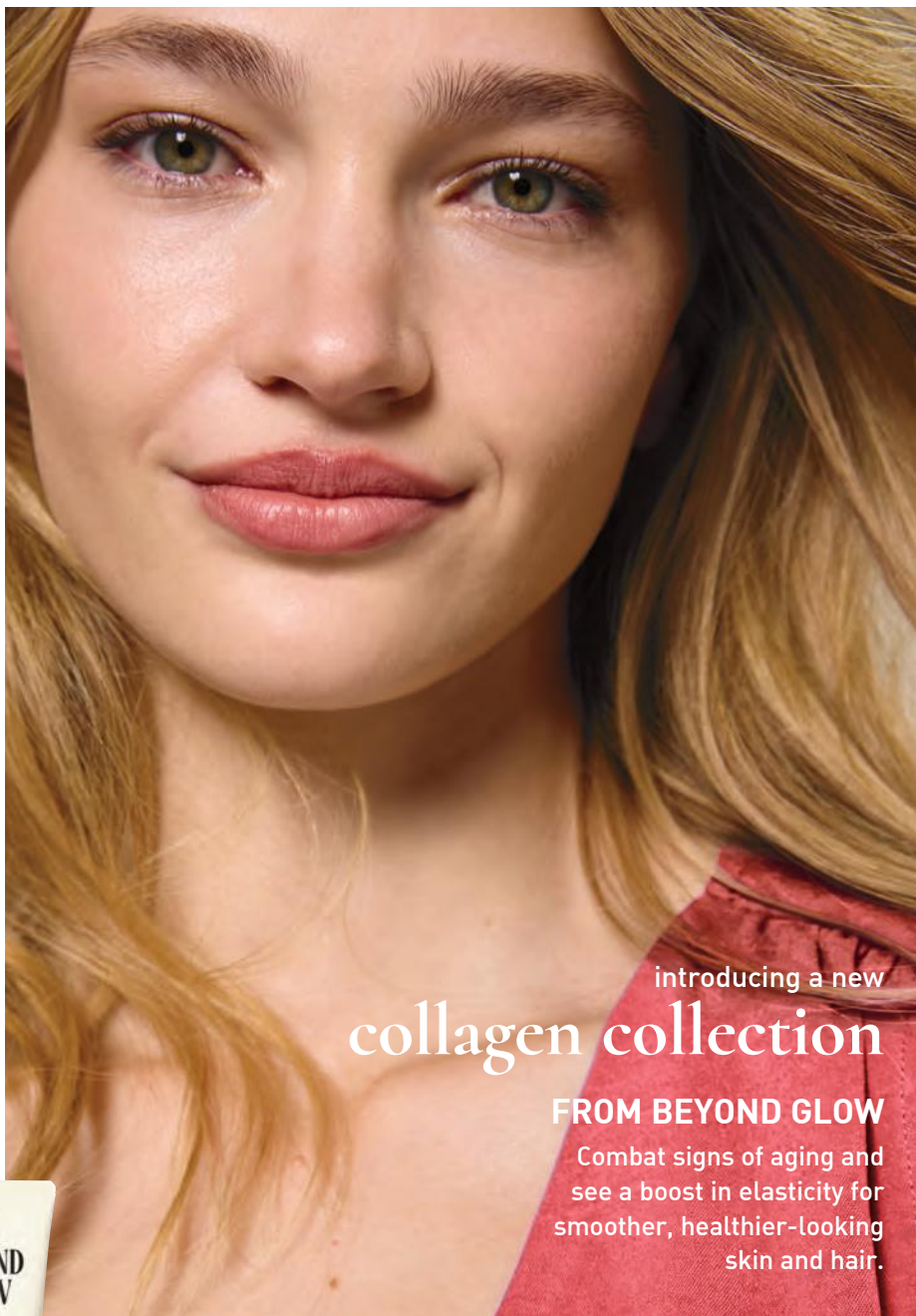
**Perfumed Liquid  
Deodorant**  
Soft floral scent.  
Aluminum-free.  
Fast-drying. Easy  
fingertip application.  
2 fl. oz. **889-915**  
reg. \$10  
**\$7.50**



**Exfoliation Mitt**  
Microfiber jacquard,  
with nylon/spandex  
cuff. **439-734**  
reg. \$14  
**\$11 \$7.99**



SKIN CARE



introducing a new  
**collagen collection**

**FROM BEYOND GLOW**

Combat signs of aging and see a boost in elasticity for smoother, healthier-looking skin and hair.



**Beyond Glow Hyaluronic Acid + Niacinamide Facial Cleanser**  
5 fl. oz. 627-821 reg. \$15

**\$12 if purchased separately**

**\$1.99**

WITH ANY BEYOND GLOW PURCHASE, PAGES 41-49.  
LIMITED QUANTITIES. **\$15 VALUE**

MOISTURIZER:

**100%**

agreed they felt long-lasting hydration\*\*

\*\*Based on a consumer-perception study of 31 women for 14 days.

HAIR MASK: in just  
**7 days**hair looks  
smoother†

†Based on a clinical study of 32 adults.



SERUM: in just

**1 use**visibly smooths away the  
look of neck wrinkles  
and boosts elasticity\*

\*Based on a 4-week clinical study of 34 women.

**NEW****Beyond Glow  
Hair Mask with Collagen**

2-in-1 conditioner and hair mask, formulated to visibly strengthen damaged hair while restoring moisture and shine. With elasticity-boosting collagen, smoothing silk protein, thickening biotin and conditioning keratin. Apply to damp hair, leave in, rinse out. 10.5 fl. oz. **095-400** reg. \$30

**\$23****NEW****Beyond Glow  
Collagen Face Moisturizer**

Richly nourishing anti-aging day and night cream, with elasticity-boosting collagen, visibly brightening niacinamide and hydrating hyaluronic acid, plus moisturizing ceramides to help support the skin barrier. 1.7 fl. oz. **101-627** reg. \$30

**\$23****NEW****Beyond Glow  
Collagen Neck Firming Serum**

Lightweight luxurious serum designed to hydrate and smooth the delicate skin around the neck and décolleté area. With elasticity-boosting collagen, retinol, known to visibly smooth wrinkles, niacinamide, known to visibly brighten, and caffeine, known to visibly tighten skin. Includes built-in metal gua sha massaging roller. 1.7 fl. oz. **101-608** reg. \$30

**\$23**

# the trending star ingredient: snail mucin complex

Clinically tested to  
improve skin tone  
and brightness



## **Beyond Glow Snail Mucin Complex + Niacinamide Serum**

Visibly brightens, moisturizes and retexturizes. With snail mucin complex and niacinamide, also known as vitamin B3, which helps even skin tone and strengthen the skin barrier. 3.3 fl. oz. 255-574 reg. \$36

**\$28**

## **Beyond Glow Snail Mucin Complex + Panthenol Cream**

Moisturizes while it visibly improves texture and elasticity. With snail mucin complex and panthenol, which helps lock in moisture. 3.7 fl. oz. 255-536 reg. \$36

**\$28**

Our cream and serum, formulated with snail mucin complex, moisturize and help visibly brighten skin with a clear, cushiony yet fast-absorbing texture that disappears into the skin while plumping it up with hydration.



**Beyond Glow Vitamin C  
6% + Ferulic Acid Serum**  
Vitamin C visibly improves  
radiance for glowing skin.  
Ferulic acid, a powerful  
antioxidant, helps protect  
skin from environmental  
stressors. 1 fl. oz.  
**255-589** reg. \$38

**\$30**



**OFFER** Details, see page 40.

# minimize the look of pores

## 3X

Reduction in the look of pores,\* using serum + cream together

\*Versus using the serum alone, based on a clinical study.

**Beyond Glow Niacinamide 10% + Panthenol Serum**  
Helps improve even tone and elasticity. Niacinamide, also known as vitamin B3, helps even skin tone and replenish the skin barrier. Panthenol, also known as provitamin B5, helps lock in moisture. 1 fl. oz. 255-612 reg. \$38

**\$30**

**Beyond Glow Niacinamide 10% All-in-One Cream**  
Nighttime facial cream that helps enhance your healthy-looking glow. All-in-one facial cream that visibly brightens skin, reduces fine lines and helps support the skin barrier. Contains retinol. 3.7 fl. oz. 617-350 reg. \$38

**\$30**



**Beyond Glow  
Niacinamide 10%  
Neck Firming  
Cream**

Formulated with shea butter and squalane derived from olive oil, plus panthenol, which helps strengthen the skin's moisture barrier. Contains retinol. Use PM. 3.3 fl. oz. 052-249 reg. \$38 **\$30**



**In just 4 weeks:**

**NECK FIRMING CREAM**

- Crepey skin appears smoothed\*\*
- Neck and décolleté lines look improved\*\*

\*\*Based on a clinical study on 31 people.

**EYE CREAM**

- Crow's-feet appear reduced†
- Helps under-eye bags look depuffed†

†Based on a clinical study on 30 people.



**Beyond Glow  
Niacinamide 10%  
Eye Cream**

Formulated with niacinamide and caffeine, plus panthenol, which helps strengthen the skin's moisture barrier. Contains retinol. Use PM. 1 fl. oz. 052-272 reg. \$30

**\$23**

Best of  
K-Beauty

SPF 30:  
lightweight  
texture for  
everyday wear



SPF 50:  
rich milky  
texture for  
extra care

## sun care + skin care in one

**BROAD-SPECTRUM  
SUN PROTECTION**

**LEAVES NO  
VISIBLE  
WHITE CAST**

**PLUS...**

**HYALURONIC ACID**  
helps skin feel  
plump and supple

**CERAMIDES**  
help protect the  
skin barrier

**CENTELLA ASIATICA**  
helps hydrate  
and soothe skin

**Beyond Glow  
Sun Moisturizer SPF 30**  
For face and body. Blends seamlessly.  
Perfect for all skin tones. Formulated  
without fragrance. 1.7 fl. oz.  
927-773 reg. \$38

**\$30 \$12.99**

**Beyond Glow  
Sun Milk SPF 50**  
With higher SPF. Blends seamlessly.  
Perfect for all skin tones. Formulated  
without fragrance. 1.7 fl. oz.  
929-541 reg. \$38

**\$30 \$12.99**

# BEYOND GLOW

## CENTELLA COLLECTION



### in one use

relieves the look of redness caused by dryness\*

#### **Beyond Glow Centella Redness Relief Serum**

A soothing gel serum with centella asiatica, panthenol and glycerin to help relieve the appearance of redness. 1 fl. oz. 350-399 reg. \$36

**\$26**

\*Based on a consumer-perception study of 32 people.

### in 6 days

skin barrier improved†

#### **Beyond Glow Centella Soothing Cream**

Moisturizes and reduces the look of redness caused by dryness. Hypoallergenic and noncomedogenic. 2.7 fl. oz.

350-422 reg. \$36

**\$26**

†Based on a clinical study of 32 people.

### 96%

said skin feels instantly cooled\*\*

#### **Beyond Glow Centella Cooling Toner**

Refreshes and moisturizes irritated skin caused by dryness in seconds. 6.7 fl. oz.

350-403 reg. \$25

**\$20**

\*\*Based on a consumer-perception study of 31 people.

## Nourish

**Beyond Glow  
Lipcerin  
Intensive  
Nourishing  
Lip Care**  
reg. \$25

**\$18**



Nourishing  
052-325

An intensive, glistening formula that nourishes dry lips with moisture. With a plumping peptide, moisture-enhancing glycerin and smoothing shea butter. Clear finish. .5 fl. oz.

## Plump

**Beyond Glow  
Lipcerin  
Plump  
and Cool  
Lip Care**  
reg. \$25

**\$18**



Plump and Cool  
052-344

An intensely moisturizing, glistening formula that visibly plumps and softens lips. With cooling menthol for an instant visible increase in lip volume. Clear finish. .5 fl. oz.

## Tint

**Beyond Glow  
Lipcerin  
Hydrating  
Tinted  
Lip Care**  
reg. \$25

**\$18**



Twinkle  
052-750



Flash  
052-909



Gleam  
053-097



Flare  
053-101



Splendor  
053-078



Smolder  
053-140

An intensely moisturizing, glistening formula that visibly softens lips and adds a glossy hint of color. With a plumping peptide, moisture-enhancing glycerin and smoothing shea butter. .5 fl. oz.

# shifting shades magic results

Presto change-o! Formula interacts with your lips' pH and transforms to your personalized shade of pink.



**Beyond Glow  
Lipcerin  
Color Shift  
Tinted Lip Care**

A glistening formula that nourishes dry lips and adapts to your lips for a customized shade. Each, .5 fl. oz. reg. \$25

**\$18**



**Day Shift**

Lemon/lime shade shifts to a **warm pink** on lips.  
**840-756**



**Night Shift**

Black shade shifts to a **cool pink** on lips.  
**840-760**

96%

Said skin  
feels  
smooth\*

100%

Said it thoroughly  
melts away  
makeup\*

# cleansers with benefits

## fruit-infused cleansers

**For All Skin Types**  
**With Kiwi Extract, Vitamins  
B3, B9 and Provitamin B5**

### **Beyond Glow Gentle Foaming Cleanser with Vitamins and Kiwi**

A gentle foaming water-based cleanser that easily washes off makeup and residue without stripping your skin, leaving it feeling soft and smooth. Skin looks brighter and revitalized. 5 fl. oz. **575-760** reg. \$19

**\$15 \$10.99**

**For All Skin Types**  
**With Mango Butter  
& Papaya Enzyme**

### **Beyond Glow Melting Balm Cleanser with Enzyme and Mango Butter**

Transforms into a silky oil when massaged onto skin. Add water for a creamy cleansing milk that rinses away makeup, residue and even visible blackheads and whiteheads, leaving your skin feeling soft, smooth and refreshed. 5 fl. oz. **575-865** reg. \$19

**\$15 \$10.99**

\*Based on a consumer-perception study of 33 people.



## Cleanse + Exfoliate

**For Oily Skin**  
**With Salicylic &  
Citric Acids**

### **Beyond Glow Salicylic + Citric Acids Facial Cleanser**

5 fl. oz. **627-798**  
reg. \$15

**\$12 \$8.99**

**OFFER** Details, see page 40.

**Anew Vitamin C Exfoliating Peel Pads**  
With PHA and pineapple extract, vitamin C, panthenol and glycerin. Exfoliates and helps visibly brighten. Formulated without alcohol and fragrance. 4.3 fl. oz. 70 pads. **368-894** reg. \$34

**\$23**



**Anew Vitamin C Antioxidant Lip Treatment**  
Nourishes lips with vitamins C and E.  
.13 oz. net wt. **784-547**

reg. \$14

**\$10**



**Anew Vitamin C Glow Body Scrub**

Sugar-based formula with pineapple and papaya enzymes and coffee seed extract exfoliates dry, dull skin. Citrus scent. 9 oz. net wt. **443-752** reg. \$36

**\$21**



**Anew Vitamin C Brightening Eye Cream**

Visibly reduces dark circles. Under-eye area looks brighter and more even-toned.

.5 fl. oz. **953-602** reg. \$34

**\$24**



**Anew Vitamin C Nourishing Body Butter**

With hydrating shea butter and niacinamide, plus vitamins C and E to help restore radiance. Fruity-floral and citrus scent. 7.8 fl. oz. **539-326** reg. \$34

**\$21**



**Anew Vitamin C Illuminating Priming Moisturizer**

With skin-smoothing silicones. Use after Brightening Serum. Wear alone or under makeup.

1.7 fl. oz. **914-671** reg. \$34

**\$24**



**Anew Vitamin C Targeted Skin Brightener**

With the triple-antioxidant power of 7% vitamin C, 2% ferulic acid and vitamin E, skin looks brighter and more even-toned with a dramatically improved appearance in overall skin clarity. With moisturizing allantoin and soothing aloe. Suitable for sensitive skin.  
.5 fl. oz. **169-177** reg. \$34

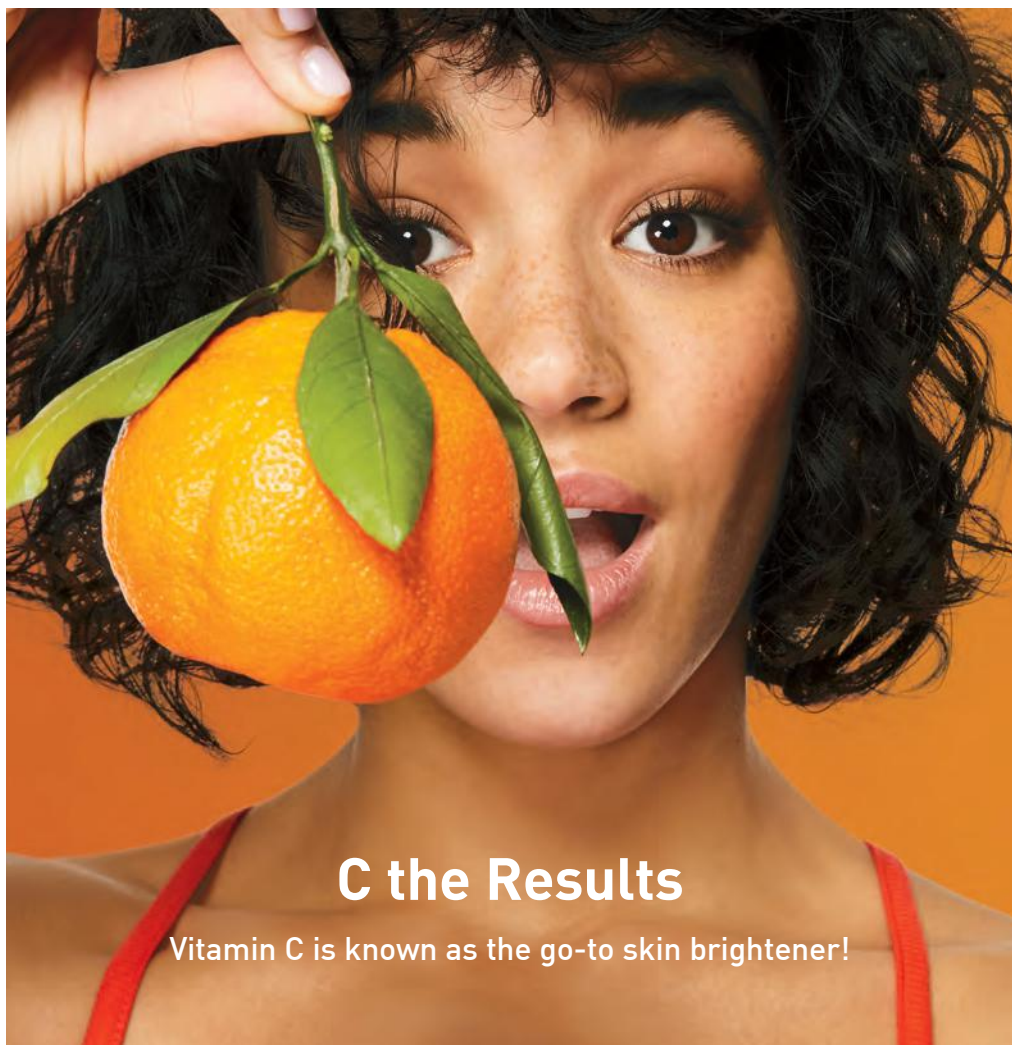
**\$24**



**Anew Vitamin C Brightening Serum**

Skin is visibly energized and brightened with the power of 10% pure vitamin C. 1 fl. oz.  
**522-066** reg. \$44

**\$28**



**C the Results**

Vitamin C is known as the go-to skin brightener!



**Isa Knox Anew Clinical  
Revitalize & Reveal  
Resurfacing Expert  
Smoothing Fluid**  
79% as effective as a  
pro micro-dermabrasion  
without the same  
irritation. 1 fl. oz.  
**852-282 reg. \$45**  
**\$32**

\*In 6 out of 8  
attributes tested  
over a 7-week  
period.



**Isa Knox  
Anew Clinical  
Revitalize & Reveal  
Extra Strength  
Retexturizing Peel**  
Results similar to  
a 35% pro glycolic  
peel.\* 30 fragrance-  
free pads. 2" diam.  
**632-774 reg. \$42**  
**\$30**



**Isa Knox Anew Clinical  
Revitalize & Reveal  
Advanced Wrinkle  
Corrector**  
In just two weeks,  
wrinkles appear  
reduced. 1.7 fl. oz.  
**470-100 reg. \$42**  
**\$30**



I've been using it at night  
for years, and it truly works  
on lines and wrinkles.

—online reviewer

# in just 1 use

visibly plumps and smooths the look of fine lines and wrinkles\*\*

**NEW**

## Anew Clinical Instant Fix Plumping Serum

This hydrating serum infuses skin with instantly plumping moisture. Formulated with replenishing squalane, known to help soften skin. Also infused with pepper fruit extract to help skin look smooth and relaxed. Fine lines and wrinkles appear remarkably reduced, and skin looks dramatically plumper and more youthful.

1 fl. oz.  
337-365 reg. \$42  
**\$30**

A NEW  
CLINICAL

INSTANT FIX EFFET EXPRESS

PLUMPING SERUM  
SERUM REPULPANT

# 93%

showed improvement  
in lip volume in  
just one use\*\*

**NEW**

## Anew Clinical Instant Fix Lip Plumping Serum

A luscious pout is what it's all about!

Lips look fuller instantly and more volumized for 72 hours.\*\*

With menthol to cool and visibly plump lips on contact, plus hyaluronic acid to help infuse a surge of boosting hydration.

Deeply moisturizing jojoba oil helps lips look soft and supple over time.

Fine lip lines appear smoothed. 0.2 fl. oz.

585-858 reg. \$19  
**\$15**

A NEW  
CLINICAL

INSTANT FIX  
EFFET EXPRESS

LIP PLUMPING  
SERUM  
SERUM REPULPANT  
LÈVRES



**BOTH FOR \$33.49** 939-113 \$61 value.

## WITH PLUMPING PEPTIDES

Peptides jump-start skin renewal to help visibly **firm** skin, boost **elasticity** and restore **youthful bounce**.

### Isa Knox Anew Clinical Collagen Booster Firming Cream

With moisturizing and skin-plumping niacinamide and squalane. Hygienic, airless pump. 1.7 fl. oz.

131-380 reg. \$45

**\$30**



### Isa Knox Anew Clinical Collagen Booster Eye Lift Pro Dual Eye System

Gel, .33 fl. oz.

Cream, .33 fl. oz.

564-550 reg. \$40

**\$25**



### Isa Knox Anew Clinical Collagen Booster Microneedling Polisher

At-home alternative to micro-dermabrasion and micro-needling. Visibly diminishes pores, fine lines and wrinkles.

1.7 fl. oz. 798-592

reg. \$34

**\$21**

# 100%

SAW IMPROVEMENT IN SKIN  
FIRMNESS AND RADIANCE  
AFTER ONE USE\*



#### KEY INGREDIENTS:

##### **Jojoba Seed Oil**

Nourishes and softens; mimics skin's natural sebum.

##### **Hydrolyzed Collagen**

Helps improve skin elasticity and firmness.

##### **Rice Ferment Filtrate**

Brightens and revitalizes.

#### **Anew Clinical Collagen Booster Firming Peel Off Mask**

With hydrating and skin-smoothing ingredients, it helps visibly lift, brighten uneven skin tone and refine texture. 2.3 fl. oz.

**856-106** reg. \$25

**\$20**

Formulated without parabens, sulfates, phthalates and mineral oil.

\*Based on a clinical test of 30 participants.



VISIBLE RESULTS:

reduced  
wrinkles

and minimized lines and dark spots



**Isa Knox Anew Clinical  
Line Eraser  
with Retinol Treatment**

Great for first-time retinol users.

Use AM/PM. 1 oz. net wt.

368-947 reg. \$45

**\$32**



**Isa Knox Anew  
Clinical Line Eraser with Retinol  
Targeted Treatment**

For targeted lines and wrinkles  
(expression lines) such as around  
forehead and mouth. .67 fl. oz.

925-159 reg. \$42

**\$30**

**\$22.49**



**Anew Clinical Line Eraser  
with Retinol Eye Cream**

Helps visibly improve fine lines,  
crow's-feet, wrinkles, dark  
circles and puffiness for a more  
youthful, refreshed appearance.\*

0.5 fl. oz. 623-443 reg. \$40

**\$25**

\*Based on a 6-week clinical test.

# 100%

showed clinical improvement of fine lines and wrinkles in one week, with improved results over time.

**Isa Knox Anew Clinical  
Line Eraser with Retinol  
[1.0%] Advanced  
Retinol Serum**

See dramatic results with our highest dose of retinol (1%), the #1 wrinkle-fighting ingredient recommended by dermatologists. 1 fl. oz.

**104-080**

reg. \$50

**\$41**





**Anew Ultimate  
Multi-Performance Eye Patches**  
Revitalizing eye patches visibly de-puff, firm  
under-eye area and diminish dark circles.  
30 pairs/60 patches. **623-390**  
reg. \$34  
**\$23**



**Anew Ultimate  
Multi-Performance  
Day Cream Broad Spectrum SPF 25**  
See wrinkles fade and youthful  
vibrance return. 1.7 oz. net wt.  
**541-299** reg. \$42  
**\$30**



**Anew Ultimate  
Multi-Performance Eye System**  
Visibly smooths crow's-feet and de-puffs  
under-eye bags. Cream, .5 oz. net wt. Elixir,  
.09 oz. net wt. **021-862** reg. \$42  
**\$30**



**Anew Ultimate Night Repair Serum**  
See improved tone and texture.  
With peptides, licorice, hyaluronic  
acid and niacinamide. Use PM  
before moisturizer. 1 fl. oz. **080-692**  
reg. \$45  
**\$31**



★★★★★

I love the thickness, the smell, the texture—but most of all, the results.

—online reviewer

**Anew Ultimate  
Multi-Performance  
Night Cream**

It works while you sleep to revive and recreate the look of youthful skin. 1.7 oz. net wt. 862-992 reg. \$42

**\$30**





face the day  
with supreme  
radiance



**Anew Ultimate  
Supreme  
Eye Balm**

Moisturizing formula  
infused with squalane,  
sunflower seed oil and  
antioxidant  
vitamin E. Wear alone  
or under makeup.  
0.1 oz. net wt. **625-340**  
reg. \$45

**\$31**



**Anew Ultimate Supreme  
Advanced Performance  
Crème**

With Black Pearl Extract.  
See a dramatic difference in  
deep wrinkles and skin  
radiance. 1.7 oz. net wt.  
**014-735** reg. \$60

**\$42**

**100%**  
agreed skin looks  
more youthful,  
firmer and  
re-contoured\*

**Anew Ultimate Supreme  
Radiant Firming Cream**

Daytime moisturizer with panthenol, niacinamide and peptides to help boost hydration, visibly restore brightness, firm skin contours, and improve skin texture and elasticity. 1.7 fl. oz.

835-052 reg. \$60

**\$42**

\*In a consumer-perception study.





## Pep up your look with peptides.

**Anew Platinum  
Age Delay Serum**

With niacinamide, panthenol and peptides. Formulated to visibly boost elasticity for a firmer look. Use AM and PM before moisturizer.

1 fl. oz. 625-609

reg. \$45

**\$32 \$16.99**

**LOWEST PRICE EVER**



**Anew Platinum Day Cream  
Broad Spectrum SPF 25**

Helps skin look resculpted  
and more radiant.

1.7 oz. net wt.

673-913 reg. \$42

**\$30**



**Anew Platinum Night Cream**

Skin appears smoother overnight,  
resculpted over time.

1.7 oz. net wt.

562-581 reg. \$42

**\$30**



**Anew Platinum Eye & Lip Cream**

Redefine the look of eyes and lips.

Dual applicator. .5 oz. net wt.

237-113 reg. \$42

**\$30**



**Anew Platinum Sculpting Sleep Mask**

An overnight mask that helps visibly lift, plump  
and nourish skin while you sleep. Formulated  
with skin-contouring tetrapeptide, panthenol,  
niacinamide and yeast extract. 1.7 fl. oz.

835-033 reg. \$42

**\$30**

## ANEW ULTIMATE SET

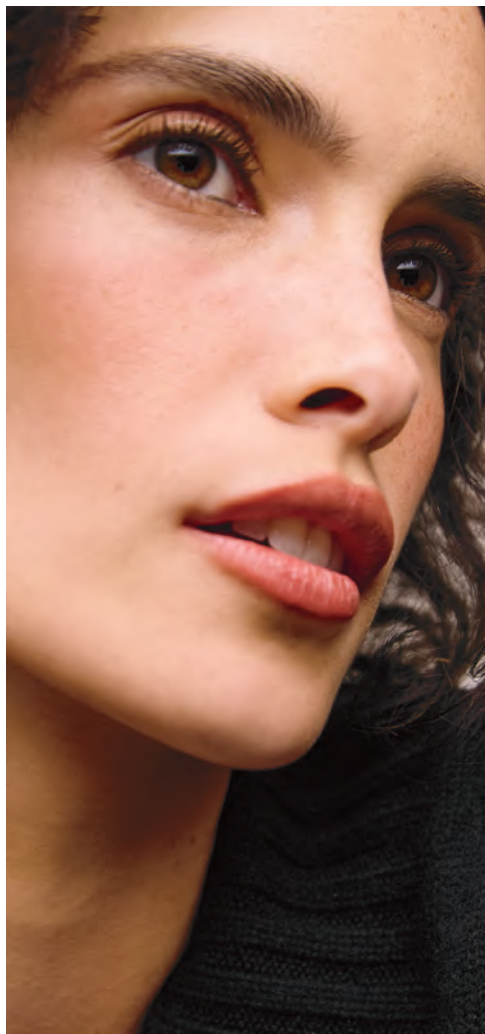
**Anew Ultimate  
Multi-Performance Day Cream  
Broad Spectrum SPF 25**  
1.7 oz. net wt.  
**\$42 value**

**Anew Ultimate  
Multi-Performance Night Cream**  
1.7 oz. net wt.  
**\$42 value**

**Anew Ultimate  
Multi-Performance Eye Patches**  
30 pairs/60 patches.  
**\$34 value**

**ALL 3 FOR \$54.99**

**\$118 VALUE**  
**426-499**



## ANEW PLATINUM SET

**Anew Platinum  
Eye & Lip Cream**  
Dual applicator.  
.5 oz. net wt.  
**\$42 value**

**Anew Platinum  
Night Cream**  
1.7 oz. net wt.  
**\$42 value**

**Anew Platinum Day Cream  
Broad Spectrum SPF 25**  
1.7 oz. net wt.  
**\$42 value**

**ALL 3 FOR**

**\$59.99**

**\$126 VALUE**  
**877-790**



**BRIGHTENING  
DUO**

**Anew Vitamin C Exfoliating Peel Pads**  
4.3 fl. oz. 70 pads.  
**\$34 value**

**Anew Vitamin C Brightening Serum**  
1 fl. oz. **\$44 value**

**BOTH FOR  
\$35.49  
\$78 VALUE  
878-471**



**ANTI-WRINKLE  
DUO**

**Anew Ultimate Supreme  
Advanced Performance Crème**  
1.7 oz. net wt. **\$60 value**

**Anew Clinical Line Eraser  
with Retinol Eye Cream**  
0.5 fl. oz. **\$40 value**

**BOTH FOR  
\$44.99  
\$100 VALUE  
878-175**



**FIRMING  
DUO**

**Isa Knox Anew Clinical Collagen Booster  
Eye Lift Pro Dual Eye System**  
Gel, .33 fl. oz. Cream, .33 fl. oz. **\$40 value**

**Isa Knox Anew Clinical Collagen Booster  
Firming Cream**  
1.7 fl. oz. **\$45 value**

**BOTH FOR  
\$38.49  
\$85 VALUE  
878-122**



**LIFTING  
DUO**

**Anew Platinum Sculpting Sleep Mask**  
1.7 fl. oz. **\$42 value**

**Anew Platinum Age Delay Serum**  
1 fl. oz. **\$45 value**

**BOTH FOR  
\$41.99  
\$87 VALUE  
878-911**



**FREE GIFT** Rice Water Bright Mild Cleansing Water with any duo-set purchase. Sold on page 71. Limited quantities. \$18 value.



# ANEW BARE CLEARER SKIN. confidently yours.

## ALL NEW

### Acne Clearing Treatment

Advanced anti-acne gel treatment. With 2% salicylic acid to help unclog pores and clear blemishes, plus niacinamide, willow bark and green tea extract to help soothe skin. Helps prevent new breakouts for a healthy-looking, balanced complexion. Suitable for both face and body. Use daily. 1 fl. oz. **541-447** reg. \$27

**\$20**

### Daily Gel Cleanser

Helps remove excess oil. With glycolic acid to visibly improve skin texture and refine pores for a smoother, clearer-looking complexion. Use daily. 5 fl. oz. **539-091** reg. \$25

**\$19**

### Daily Moisture Gel Cream

Delivers lasting hydration. Formulated with ceramide to help strengthen the moisture barrier, zinc to support a more balanced complexion and green tea extract to help soothe skin. Use daily. 1.7 fl. oz. **541-519** reg. \$34

**\$25**

### Detoxifying Clay Mask

Deeply cleanses and refreshes skin while helping to draw out impurities and remove excess oil. With kaolin to help purify and refine the look of pores, plus hydrating glycerin and soothing allantoin. Use 1-2X per week. 1.7 oz. net wt. **541-542** reg. \$34

**\$25**



**Isa Knox Anew Solaire Everyday  
Mineral Face Protection Cream  
Broad Spectrum SPF 50**

Lightweight formula with zinc oxide. Suitable for sensitive skin. Water-resistant (40 minutes).  
1.7 fl. oz. **368-909** reg. \$32

**\$26**



**Isa Knox Anew Solaire  
Everyday Face  
Protection Lotion  
Broad Spectrum SPF 50**

1.7 fl. oz. **673-990**  
reg. \$32

**\$26**



**Isa Knox Anew Solaire  
Active Face & Body  
Protection Lotion  
Broad Spectrum SPF 50**

2.7 fl. oz. **399-873** reg. \$38

**\$31 \$22.49**

# 93%

of women believe  
it dramatically  
improves skin's  
overall appearance.\*

**Anew Power Serum**

Visibly improves  
wrinkles, radiance,  
firmness and texture.  
Use AM and PM after  
cleansing, before  
moisturizing. 1 fl. oz.  
**894-380** reg. \$45

**\$30**

\*Based on those who  
expressed an opinion  
in a consumer-  
perception study.





**NORMAL TO DRY SKIN**

**Anew Clean  
Nourishing Cream Cleanser**

Removes impurities and makeup while restoring moisture.

5 fl. oz. **608-020** reg. \$15

**\$12**



**NORMAL, DRY AND  
COMBINATION SKIN**

**Anew Clean  
Balancing Gel Cleanser**

Gel to foam. Helps remove oil and impurities while rebalancing skin. 5 fl. oz. **608-216** reg. \$15

**\$12**



**Anew Hydra Fusion  
Gel Cream**

72 hours of long-lasting hydration.

1.7 oz. net wt. **266-893** reg. \$34

**\$23 \$16.99**



**Anew Clean  
Toner Serum**

With niacinamide, hyaluronic acid and raspberry fruit extract. Hydrates and helps visibly smooth skin and boost radiance. Apply before serums and moisturizers. 3.4 fl. oz. **286-128** reg. \$45

**\$33**

**Anew Clean  
Fine Mist**

On clean skin, spritz evenly all over face. Follow with the balance of your Anew regimen. Can also be used anytime for an instant skin refresh. 3.4 fl. oz. **286-295** reg. \$19

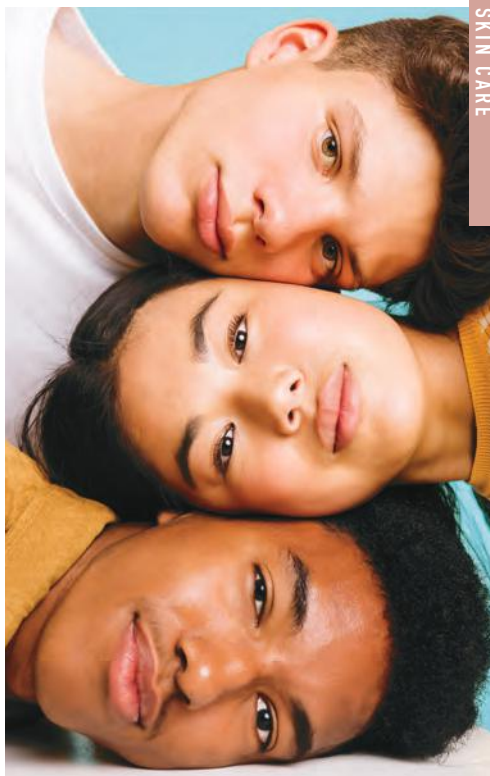
**\$15**



For dryness, dullness and uneven texture

**aqua bomb jelly cleanser**  
 Jelly to foam. Amino acids and glycerin-based cleansing agents gently cleanse. 5.41 fl. oz. **894-413** reg. \$35

**\$30**



For dryness, loss of elasticity and firmness

**the true cream - moisturizing bomb**  
 26 hours of long-lasting moisture.\*  
 1.69 fl. oz. **079-252** reg. \$42

**\$38**

\*Based on a clinical study.



For dryness, dullness and uneven texture

**the true cream - aqua bomb**  
 70% increase in hydration levels.\*  
 1.68 fl. oz. **556-207** reg. \$42

**\$38**

\*Based on a clinical study.

**Solutions**

**Anti-Aging Cream**

Moisturizing formula works to visibly smooth the appearance of fine lines and wrinkles.

1.7 fl. oz. **949-460**

reg. \$14

**\$11**



**Solutions  
Nourishing Cream**

Adds moisture to dry skin. 1.7 fl. oz.

**399-945** reg. \$14

**\$11**



**Solutions  
Firming Cream**

Skin looks and feels smoother.

1.7 fl. oz. **237-132** reg. \$14

**\$11**



**Solutions  
Brightening Cream**

Visibly improves skin tone.

1.7 fl. oz. **817-160** reg. \$14

**\$11**



**Rice Water Bright Facial Massage Cream**

With rice water, vitamins A, B and E, ceramide and minerals. After cleansing, massage into skin 2-3 times a week. 6.7 fl. oz.

450-200 reg. \$25

**\$20**



**Smaller Size! Rice Water Bright Foaming Cleanser**

Light whipped foam. With rice water and soapwort extract. Convenient size for your medicine cabinet. 5 fl. oz. 478-479 reg. \$13

**\$10**



**Rice Water Bright Mild Cleansing Water**

Removes impurities via the micellar method, so no need to rinse off! 16.9 fl. oz.

288-360 reg. \$18

**\$14**

**Rice Water Bright Foaming Cleanser**

Light whipped foam. With rice water and soapwort extract.

Skin looks clear and bright. 10.1 fl. oz.

508-093 reg. \$19

**\$15**



**Rice Water Bright Cleansing Facial Wipes**

Great on the go. With rice extract to moisturize while cleansing. Removes eye makeup.

50 sheets. 508-108 reg. \$13

**\$10**



MAKEUP



NEW SHADES

## *perfect pop of cheeky color*

### BACK BY POPULAR DEMAND

Now with a talc-free formula and vibrant new shades!

#### fmg Glimmer Powder Blush

Silky talc-free weightless formula blends with ease and gives an instant pop of soft matte color with a gentle blurring effect, leaving cheeks looking gorgeous and glowing. Create a bold blush look or a subtle flush with buildable shades that flatter all complexions. Formulated without talc, parabens, sulfates, phthalates and fragrance. .28 oz. net wt. reg. \$15

\$12





Featured shade: (on model and below right) fmg LOVE True Devotion Liquid Blush in Sweetest Day; (top right) Long Stemmed.



**fmg Glimmer Be Blushed Cheek Color**  
 Creamy formula with vitamin E.  
 Can be used on cheeks and lips. Buildable coverage. Dewy finish. Formulated without parabens, phthalates and fragrance.  
 .14 oz. net wt. reg. \$17

**\$13**

-  Icy Petal  
022-854
-  Blushing Nude  
022-911
-  Tropical Peach  
022-964
-  Golden Rose  
022-840
-  Crushed Berry  
022-945



**fmg LOVE True Devotion Liquid Blush**  
 Hydrating lightweight formula with blueberry extract melts effortlessly into skin, leaving a naturally radiant glow. Just a dot is all that is needed for a beautifully fresh and multidimensional blush. Blends easily for a smooth, even flush of blush look. Buildable creamy coverage with a subtle pearly finish. Formulated without parabens, sulfates, phthalates and talc. .15 fl. oz. reg. \$19

**\$15**

-  Sweetest Day  
623-663
-  Long Stemmed  
623-720
-  Candy Hearts  
623-678
-  ValenWine  
623-735



A close-up, high-angle portrait of a woman's face, focusing on her eyes, nose, and lips. She has dark, winged eyeliner, light brown eyeshadow, and bright pink lipstick. Her skin is fair with some freckles. The text "sleek. chic. magnifique" is overlaid on the right side of her face.

sleek. chic.  
*magnifique*

*Our slickest liquid liner yet with unparalleled staying power and iconic precision!*

**NEW**

**fmg Glimmer Slick Line Liquid Eyeliner**

Smudge-, transfer- and waterproof formula wears for up to 17 hours\* and is suitable for hot and humid climates. Glides on effortlessly. Full coverage, matte finish. Vegan. Formulated without parabens, sulfates, phthalates and talc. .085 fl. oz.

**Black 236-299**  
reg. \$17

**\$12 \$9.99**

**INTRO SPECIAL**



Ultrafine brush tip

**fmg Glimmer Liquid Eyeliner**

Quick-drying, long-lasting formula. Transfer-, sweat- and waterproof. Matte finish. Formulated without parabens, phthalates and fragrance. .037 fl. oz.

**Blackest Black 354-380**  
reg. \$14



**\$11**



**fmg Glimmer Liquid Color Eyeliner Pen**

Felt-tip applicator glides on smoothly, with precise application. Highly pigmented, lightweight formula. Smudge-, transfer- and sweat-proof.\* Formulated without parabens, talc, mineral oil, phthalates and fragrance. .04 fl. oz. reg. \$14

**\$11**

   
Smoked 519-537 Forest 519-518

   
Chestnut 519-503 Indigo 519-499



\*Based on a consumer perception study.



**fmg Glimmer  
Fine Line Brow Pencil**  
Sweat- and smudge-proof,  
yet easy to remove.\*  
Retractable. Vegan.  
Formulated without  
parabens, talc, sulfates,  
fragrance and mineral oil.  
.0032 oz. net wt.  
reg. \$10

**\$7**



Blonde  
888-206



Soft Medium  
888-230



Medium  
888-278



Dark  
888-282

\*Based on a consumer  
perception study.



**MICRO TIP**  
creates realistic  
hair-like strokes

**MATTE  
FINISH**  
buildable,  
long-wearing,  
creamy, yet firm  
formula

**SPOOLIE**  
blends and  
grooms for a  
natural look

★★★★★ Doesn't disappoint!  
 This is my go-to eyeliner.  
 It wears well, goes on easily.

*-online reviewer*












**BROW DEFINERS**

- |  |   |   |
|--|---|---|
|  Light Blonde<br>331-109 |  Blonde<br>331-113     |  Tawny<br>331-128    |
|  Light Brown<br>331-151  |  Dark Brown<br>331-147 |  Brunette<br>331-242 |

**EYELINERS**

- |   |   |   |  |
|---|---|---|--|
|  CREAM<br>Emerald Green<br>334-332        |  CREAM<br>Starry Night<br>334-347      |  CREAM<br>Saturn Grey<br>334-328           |  |
|  CREAM<br>Majestic Plum<br>334-313        |  CREAM<br>Cosmic Brown<br>334-351      |  CREAM<br>Blackest Black<br>334-366        |  |
|  DIAMOND<br>Sterling<br>331-960           |  DIAMOND<br>Teal Sparkle<br>331-606    |  DIAMOND<br>Olive<br>331-940               |  DIAMOND<br>Twilight Sparkle<br>331-553   |
|  DIAMOND<br>Sugar Plum<br>331-625         |  DIAMOND<br>Purple Rain<br>332-071     |  DIAMOND<br>Smoky Diamond<br>331-280       |  DIAMOND<br>Brown Sugar<br>331-568        |
|  DIAMOND<br>Black Ice<br>331-610          |  WATERPROOF<br>Blue Skies<br>334-237   |  WATERPROOF<br>Raisin<br>332-200           |  WATERPROOF<br>Brown Chocolate<br>332-124 |
|  WATERPROOF<br>Seafoam Green<br>334-241 |  WATERPROOF<br>Smoky Grey<br>332-162 |  WATERPROOF<br>Blackest Night<br>229-491 |  WATERPROOF<br>Midnight Blue<br>332-158 |

**LIPLINERS**

- |   |   |  |  |
|---|---|--|--|
|  Honey Peach<br>327-721 |  Pink Bouquet<br>330-356 |  Passion Red<br>327-650   |  Red Brick<br>330-451   |
|  Chocolate<br>330-667   |  Simply Spice<br>330-614 |  Mystery Mauve<br>330-538 |  Candy Apple<br>327-903 |
|  Au Naturel<br>330-318  |  Merlot<br>330-284       |  Perfect Plum<br>330-887  |  |

**fmg Glimmer Liners for Brows, Eyes and Lips**  
 Long-wearing. Retractable. Formulated without parabens,  
 sulfates and talc. Each, .01 oz. net wt. reg. \$9  
**\$4.50 each**



**BUY ONE, GET ONE FREE** mix or match, page 77.

# pencil me in!

**NEW**

## fmg Glimmer Pencil for Eyes, Brows and Lips

Precision glide-on pencil sharpens to a fine point. Creamy, waterproof formula with hours of wear\*. Blendable, buildable coverage and a natural matte finish. Won't tug or pull. Formulated without parabens, sulfates, phthalates and talc. Vegan. Each, .04 oz. net wt. reg. \$7

**\$4 each**

### EYE

High definition color



Jet  
Black  
691-714



Warm  
Mahogany  
691-585

### BROW

Shapes and gently fills  
in sparse brows



Soft  
Brown  
691-566



Medium  
Brown  
691-551



Brown  
Black  
691-547

### LIP

Helps keep lipstick in place  
and prevent feathering\*



Blush Silk  
631-290



Plum Lace  
680-084

\*Based on a consumer perception study.

# shimmer that wows

## fmg Glimmer Liquid Eyeshadow

Silky lightweight formula glides on effortlessly for ultrafine pearly color that lasts all day. Water-resistant. Will not smudge or crease. No messy fallout. Buildable coverage from a sheer wash of soft sateen sheen to full-on shimmery wow. Formulated without parabens, phthalates, sulfates and talc. Available in Matte Sateen or Shimmer finish. .07 fl. oz. reg. \$14

**\$11**










- |   |  |  |  |  |
|---|--|--|--|--|
| <br><b>MATTE SATEEN</b><br>Sunstone<br>324-392 | <br><b>MATTE SATEEN</b><br>Moonstone<br>324-612 | <br><b>MATTE SATEEN</b><br>Citrine<br>324-631 | <br><b>MATTE SATEEN</b><br>Tiger's Eye<br>324-646 |  |
| <br><b>SHIMMER</b><br>Pink Topaz<br>324-608    | <br><b>SHIMMER</b><br>Crystal Lilac<br>324-593  | <br><b>SHIMMER</b><br>Rose Gold<br>324-521    | <br><b>SHIMMER</b><br>Fool's Gold<br>324-517      | <br><b>SHIMMER</b><br>Diamond Dust<br>324-574 |

## fmg Glimmer Eyeshadow Quad

Soft powder formula lasts all day. No messy fallout. Buildable coverage. Formulated without parabens and fragrance. Available in Multi and all Matte finishes. .21 oz. total net wt. reg. \$18

**\$14**

- |   |  |  |   |  |
|---|--|--|---|--|
| <br><b>MATTE</b><br>Calypso 741-261  | <br><b>MATTE</b><br>Bombshell 741-170 |  |   |  |
| <br><b>MULTI</b><br>Tempress 884-731 | <br><b>MULTI</b><br>Idol 900-975      | <br><b>MULTI</b><br>Goddess 901-330 | <br><b>MULTI</b><br>Mixx 885-738 | <br><b>MULTI</b><br>Vixen 425-272 |



For Multi Quad finishes, visit Avon.com.



## bold brows & lush lashes



### **fmg Cashmere Eyelash Primer**

Nourishing formula with biotin and collagen amino acids helps to keep lashes looking healthy and strong. Maximizes the performance of any mascara for gorgeous, lush lashes. Formulated without parabens, sulfates and talc. .35 fl. oz. **324-369** reg. \$24

**~~\$19~~ \$13.99**





**fmg Glimmer  
SuperExtend  
Nourishing Mascara**

Long-wearing lengthening formula with vitamin E, argan and coconut oils. Won't clump, smudge or flake. Formulated without sulfates and talc. .237 fl. oz.

**Black 284-087**

**Brown Black**

**721-510**

reg. \$17

**\$11**



**fmg Glimmer  
SuperShock  
Volumizing Mascara**

Lash-building formula with plumping fibers. High-gloss finish. Won't clump, smudge or flake. Formulated without phthalates and fragrance. .338 fl. oz.

**Black 562-577**

reg. \$17

**\$11**



**fmg Glimmer  
Wash-Off  
Waterproof Mascara**

Waterproof volume. Washes off easily with soap and water. Formulated without phthalates, fibers and fragrance. .21 oz. net wt.

**Black 535-560**

reg. \$17

**\$11**



**fmg LOVE at 1st Lash  
Waterproof Mascara**

Lash-loving, waterproof formula with volumizing and lengthening fibers. With Lashrez, olive oil and vitamin E. Won't clump, smudge or flake. Formulated without parabens and sulfates. .29 fl. oz.

**Blackest Black**

**480-953**

reg. \$19

**\$15**



**fmg LOVE at 1st Lash  
Mascara**

Lash-loving volumizing and lengthening fibers. With lycopene, olive oil and vitamin E. Won't clump, smudge or flake. Formulated without parabens and sulfates. .3 fl. oz.

**Blackest Black**

**698-670**

reg. \$19

**\$15**



**GO. by Glimmer  
Whipped Lip & Cheek Tint**

Ultimate multitasker delivers beautiful color to lips and cheeks. With apple fruit extract, an antioxidant known to help promote smooth, glowing skin. Full pigmented coverage with a velvety matte powder finish. Formulated without parabens, talc, sulfates, pthalates and mineral oil. .14 oz. net wt. reg. \$18

**\$14**



Velvet  
Vanilla  
922-293



Cherry  
Cocktail  
922-289



Frozen Pink  
749-994



Blushed  
749-870



Hibiscus Tea  
750-019



Peony  
749-865



Flora  
749-956



Jam  
749-850

**GO. by Glimmer  
Lacquered Lip Gel**

Ultimate fusion of shiny gloss and tinted lip color in one. Non-sticky formula with gel-like texture glides on and helps to leave lips feeling soft and cushioned. Infused with a Super-Fruit Extract Complex that includes noni fruit, passionflower and amla fruit extract. Buildable coverage with a glossy finish. Formulated without parabens, talc, sulfates, pthalates and mineral oil. .14 oz. net wt. reg. \$17

**\$13**



Soft  
922-327



Fruity Floral  
922-312



Waffle Cone  
750-023



Orchid Bloom  
750-320



Whisper Pink  
750-114



Sunset Rose  
750-205



Seeing Red  
750-391



Currant Crush  
750-478



Featured shade: GO. by Glimmer Cheek & Eye Shadow in Botanical Gardens.

# GO. *your own way*









**Best of  
K-Beauty**

**GO. by Glimmer  
Cheek & Eye Shadow**

Your day-to-date, get-gorgeous solution to go! Versatile multitasking blush and eyeshadow brings exquisite color, depth and dimension to cheeks and eyes. Silky, lightweight powder formula blends effortlessly with ultra-wearable shades with either a soft matte or fine pearl finish. Formulated without parabens, sulfates and phthalates. .17 oz. net wt. reg. \$22

**\$15.50 each**







- |   |  |
|---|--|
|    |    |
| Spicy<br>934-987  | Merlot<br>934-183  |
|  |  |
| Shady<br>934-824  | Feminine<br>934-418  |
|  |  |
| Melon<br>934-642  | Botanical<br>Gardens<br>934-949  |

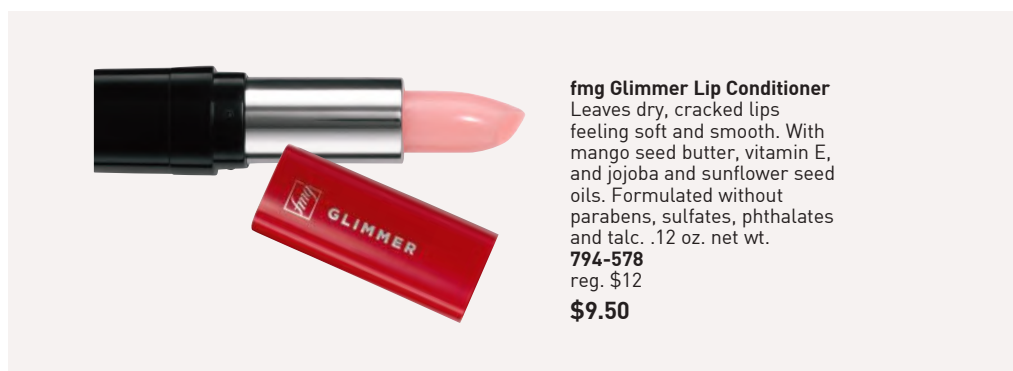


**fmg Glimmer Matte Lipstick**

Vivid color. Velvety feel. Featherlight non-drying formula with pomegranate extract. Buildable medium-to-full coverage. Matte finish. Formulated without parabens, talc, sulfates and phthalates. .10 oz. net wt. reg. \$15

**\$11.50 each**

- |   |   |   |
|---|---|---|
|  |  |  |
| Wild Orchid<br>171-431  | Garnet Sky<br>171-393   | Terra Nova<br>171-340   |
|  |  |  |
| Willow<br>171-450   | Sunset Mauve<br>171-360   | Chili<br>171-355  |



**fmg Glimmer Lip Conditioner**

Leaves dry, cracked lips feeling soft and smooth. With mango seed butter, vitamin E, and jojoba and sunflower seed oils. Formulated without parabens, sulfates, phthalates and talc. .12 oz. net wt.

**794-578**  
reg. \$12

**\$9.50**



Best lipstick EVER!  
 This lipstick is amazing.  
 The colors are gorgeous.

-online reviewer

- |  |   |   |  |
|--|---|---|--|
| <br>Blaze<br>896-880                             | <br>Hibiscus<br>898-021    | <br>Desert Moon<br>449-803   | <br>Wildflower<br>898-040   |
| <br>Wild Cherry<br>449-708                       | <br>Rose Angel<br>897-939  | <br>Poppy<br>897-651         | <br>Aurora<br>726-584       |
| <br>Tulip<br>449-712                             | <br>Wildrose<br>898-533    | <br>Sierra Sunset<br>890-805 | <br>Dahlia<br>726-350       |
| <br>Stellar<br>726-550                           | <br>Equinox<br>449-818     | <br>Aster<br>448-769         | <br>Plum Blossom<br>449-765 |
| <br>Luna<br>895-170                              | <br>Honeyflower<br>726-531 | <br>Twilight<br>449-822      |  |
| <br><b>SHIMMER</b><br>Constellation<br>449-731 |   |   |  |



**fmg Glimmer Satin Lipstick**  
 Lightweight creamy formula  
 with pomegranate extract.  
 Buildable coverage. Satin finish.  
 Formulated without parabens and  
 sulfates. .10 oz. net wt. reg. \$15  
**\$11.50**

Featured shade:  
Blaze.



Featured shade:  
fmg LOVE Plush  
Lip Oil in First Toast

### fmg LOVE Plush Lip Oil

Luxurious lip oil provides the perfect mix of beautiful shine, color and comfort. Lightweight non-sticky formula, with vitamin E and a blend of jojoba seed, argan and camellia oils, glides on smoothly and leaves lips feeling soft and moisturized. Available in sheer or shimmer finishes. Formulated without parabens and talc.  
.13 fl. oz. reg. \$17

**\$13**



SHEER  
First Toast  
756-351



SHEER  
Love Galore  
(pH-adjusting  
color)  
756-370



SHIMMER  
Bachelorette  
756-366



## ready to shine

### fmg Glimmer Lip Gloss

Perfect balance of vivid color, dazzling shine and nourishing ingredients. Infused with jojoba seed oil, this non-sticky gloss provides dimension and a mirror-like shine to enhance the natural beauty of your lips while providing essential care and hydration. Perfect to wear on its own or layered under your favorite lip color. Formulated without parabens and talc. Available in shimmer or cream finish.  
.19 fl. oz. reg. \$15

**\$11 each**



SHIMMER  
Stardust  
623-850



SHIMMER  
Bronzberry  
623-917



SHIMMER  
Copperlight  
623-864



CREAM  
Siren  
623-955



CREAM  
Sugar Sweet  
623-879



CREAM  
Mauve It!  
623-902



CREAM  
Cha Cha  
Chai  
623-883



CREAM  
Buttered Rum  
623-898



party on!



**fmg Glimmer  
Birthday Balm Lip Crayon**

Sheer, soft shine formula with non-GMO shea butter. Formulated without parabens and gluten. .1 oz. net wt. reg. \$17

**\$13 each**

- |                        |                       |                      |                          |                    |                      |                          |                |
|------------------------|-----------------------|----------------------|--------------------------|--------------------|----------------------|--------------------------|----------------|
|                        |                       |                      |                          |                    |                      |                          |                |
| Lovin' Life<br>698-867 | Glammed Up<br>953-268 | Surprise!<br>375-710 | Birthday Post<br>375-730 | Cupcake<br>950-000 | Fine Wine<br>375-725 | Private Party<br>949-990 | PYT<br>375-691 |

**fmg LOVE Lip Butter**

Sheer, high-shine formula with cupuacu seed butter, mango extract, and apricot kernel and olive fruit oils. Buildable coverage. Vanilla scented. Formulated without parabens, sulfates and phthalates. .09 oz. net wt. reg. \$19

**\$15 \$13**

- |                        |                         |
|------------------------|-------------------------|
|                        |                         |
| Tease<br>063-132       | Rendezvous<br>063-166   |
|                        |                         |
| Love Affair<br>063-242 | Secret Crush<br>063-147 |



**fmg LOVE Lip Butter Crème**

Ultra-creamy, high-shine formula with jojoba, sweet almond, apricot, olive and evening primrose oils, mango extract and shea butter. Buildable coverage. Click pen applicator. Vanilla scented. Formulated without parabens, gluten, talc, sulfates and phthalates. .10 oz. net wt. reg. \$19

**\$15 \$13**

- |                       |                      |
|-----------------------|----------------------|
|                       |                      |
| Girlfriend<br>286-329 | Enchanted<br>286-333 |
|                       |                      |
| Cherished<br>286-405  | Sweetest<br>286-390  |



**ANY TWO FOR \$17.98**

mix or match, any two for discount to apply, page 87



## NEW SHADES


Available in Cool (C), Neutral (N) and Warm (W) undertones.

## Wide range of shades to suit all skin tones!

Beloved **K-beauty** cushion foundation with **72 hours** of full, **flawless coverage and hydration** in one.

❖ **TirTir Mask Fit Red Cushion Foundation**  
 Lightweight non-greasy formula blends seamlessly, concealing imperfections and evening skin tone while keeping skin nourished and comfortable all day. Packed with hibiscus and red propolis extracts, to help keep skin moisturized and healthy-looking. Breathable, non-cakey texture. Natural, satin finish. Includes puff applicator, removable seal and mirror. .63 oz. net wt.  
 reg. \$25

**\$20**

Best of  
K-Beauty





**fmg Cashmere Under Eye Primer**

Helps diminish the look of dark circles and fine lines. With caffeine, green tea extract and a vegan alternative to collagen. Formulated without parabens, phthalates and fragrance. .317 oz. net wt. **010-429** reg. \$24

**\$19 \$13.99**



**fmg Cashmere Multi-Peptide Face Primer**

Preps skin. Revitalizing ingredients help to smooth the appearance of fine lines and pores and visibly plump and strengthen the skin barrier. Sheer gel formula with Matrixyl 3000 peptide blend, hyaluronic acid, collagen and niacinamide. Formulated without parabens, talc and fragrance. 1 fl. oz. **739-284** reg. \$24

**\$19 \$13.99**



**fmg Cashmere Multi-Peptide Eyeshadow Primer**

Keeps eyeshadow in place and intensifies the color. Skin-loving ingredients help to reduce the appearance of fine lines and visibly plump and strengthen the skin barrier. Sheer formula with Matrixyl 3000 peptide blend, hyaluronic acid, collagen and panthenol. Formulated without parabens and talc. .31 oz. net wt. **906-385** reg. \$24

**\$19 \$13.99**



## *focus on: blur*

Featured shade: W5.



- 24 hours of breathable wear
- Visibly blurs pores, fine lines and wrinkles
- Soft-focus satin finish
- Flexible shades to match any skin and undertone

### **fmg Cashmere Soft Focus Foundation**

Weightless hydrating formula with 2% niacinamide and oil-controlling silica powders. Helps camouflage the appearance of imperfections and redness without transferring for smooth, even all-day complexion perfection. Blends effortlessly and never looks cakey. Buildable medium-to-full flexible coverage. Formulated without parabens and talc. 1.01 fl. oz. reg. \$25

**\$20**



Available in Cool (C), Neutral (N), Warm (W) and Warm Olive (WO) undertones.



*focus on: dewy*

Add a sheer wash of color to face and lips

**LIMITED EDITION**

**fmg Cashmere Multi-Balm**

A blend of seven skin-loving peptides and moisturizing ingredients helps to visibly enhance, smooth and refine the complexion. Soft-focus tinted formula with light coverage complements your skin so the real you comes through. Dewy luminous finish with no greasy after-feel. Vegan. Formulated without parabens and sulfates. .91 oz. net wt. reg. \$25

**\$20**

Helps to camouflage the appearance of imperfections, dark circles and redness without settling or transferring.

**fmg Cashmere Soft Focus Full Coverage Concealer**

24 hours of flawless, comfortable, breathable wear. Creamy, hydrating formula with 2% niacinamide, amino acids and lipids visibly blurs pores, fine lines and wrinkles. Blends effortlessly and never looks cakey. Buildable full coverage with a soft-focus, natural satin finish. Formulated without parabens and talc. .24 oz. net wt. reg. \$18

**\$14**



N4 532-120  
N8 532-867

Available in Neutral (N) undertones.



*focus on: flawless*

# better than bare

## fmg Match Tint Radiant Tinted Moisturizer

Brightens skin tone, boosts moisture and blurs flaws. With passion fruit, chia and sunflower seed oils, and vitamin E and panthenol (provitamin B5). Buildable coverage. Radiant finish. Formulated without parabens. 1 fl. oz. reg. \$23

**\$18 each**

## FULL RANGE OF FLEXIBLE SHADES!



## fmg Match Prime Face Perfection

Flaw-blurring mattifying oil-free formula visibly minimizes pores and fine lines. Sheer coverage. Matte finish. Formulated without parabens.

1 fl. oz.  
103-744  
reg. \$20

**\$16**



## fmg Match Embrace Gripping Primer

Sheer, non-greasy gripping formula, with moisturizing hyaluronic acid, skin-softening glycerin and antioxidant-rich niacinamide and dragon fruit, helps to hold makeup in place, blur pores, boost radiance and even skin tone. Formulated without parabens, talc, sulfates and phthalates. Vegan. 1 fl. oz. 756-328 reg. \$19

**\$15**





Featured shade:  
Bronzed.

**fmg Match**  
**Bronze Sculpting Powder**  
 Ultrafine powder effortlessly blends into skin, creating instant warmth and depth. Silky-soft formula with finely milled pigments. Infused with skin-loving niacinamide to help visibly blur pores and improve the appearance of dullness and uneven tone. Buildable coverage with a natural radiant finish. Perfect for all skin tones. Vegan. Formulated without parabens, talc, fragrance, sulfates and phthalates.  
 .28 oz. net wt.  
 reg. \$23

**\$16 each**

# sun-kissed skin is in!

Get that back-from-the-beach bronze without baking in the sun.



**talc-free!**

all set for  
**Carnival**

Featured shades:  
fmg Glimmer Rio Rising Nail Lacquer in Hot Pink & Humid, Carnival Coral and Rio de Jade.

**fmg Glimmer  
Nourished Nail Cuticle Oil**

Nourishing treatment for dry, damaged cuticles. Fortified with safflower oil to help restore and condition nails and cuticles. Formulated without phthalates, sulfates, parabens, toluene, formaldehyde and camphor.

.4 fl. oz. **612-894**  
reg. \$14

**\$11 \$7.99**



**fmg Glimmer  
Nail Base & Top Coat**

Two-in-one base and top coat primes and shields nails. Glossy finish. Formulated without parabens and phthalates. .4 fl. oz.

**018-161**  
reg. \$12

**\$9.50 \$6.99**



**LIMITED EDITION  
fmg Glimmer Rio  
Rising Nail Lacquer**

Nail-strengthening, long-wearing, no-chip formula. Formulated without phthalates, sulfates, parabens, toluene, formaldehyde and camphor. .4 fl. oz. reg. \$13

**\$10**



**NEW SHADES**



**SATIN**  
Carnival Coral  
220-748



**SATIN**  
Rio de Jade  
220-752



**SATIN**  
Hot Pink & Humid  
220-767

**fmg Glimmer Nail Lacquer**

Nail-strengthening, long-wearing, no-chip formula. Formulated without phthalates, sulfates, parabens, toluene, formaldehyde and camphor. .4 fl. oz. reg. \$12

**\$9.50**

**SATIN**  
Full Moon Flush  
018-730



**fmg Complexion Blending Brush**

Dual-ended: Rounded buffing foundation brush and concealer brush. 6½" L. Synthetic bristles. **933-210** reg. \$24

**\$19****fmg Precision Eye Brush**

Dual-ended: Pointed pencil brush and angled eyeliner brush. 5¼" L. Synthetic bristles. **933-187** reg. \$17

**\$13****fmg Eyeshadow Blending Brush**

Dual-ended: Crease brush and allover eyeshadow brush. 6" L. Synthetic bristles. **933-320** reg. \$17

**\$13****fmg Blush & Contour Brush**

Dual-ended: Angled contour brush and tapered, oval blush brush. 7¼" L. Synthetic bristles. **933-259** reg. \$23

**\$18****fmg Flawless Complexion Sponge**

Dual-ended: Allover makeup application rounded side, and contouring and concealing flat sides. 2½" L x 1½" W. 100% PU, latex-free.

**140-160** reg. \$11**\$8.50****fmg Set & Fix Spray**

Controls oil and helps keep makeup smudge-proof. Non-greasy, non-sticky. Formulated without parabens, sulfates, phthalates and silicones. 1.7 fl. oz. **416-707**

reg. \$15

**\$11****fmg Moisturizing****Eye Makeup Remover Lotion**

Cleans, refreshes and moisturizes as it whisks away eye makeup. Formulated without parabens, sulfates and phthalates. 2.5 fl. oz. **603-840**

reg. \$9

**\$6.50****fmg Makeup Remover Wipes**

With vitamin E and aloe, chamomile, cucumber, marshmallow root and oat extracts. Resealable pack of 24 wipes. Formulated without parabens, gluten, sulfates, phthalates and fragrance. **333-867**

reg. \$13

**\$10**

# FRAGRANCE

extraordinary  
strength.  
exquisite beauty.

fruity floral

**Avon Classics Prima  
Eau de Parfum**

A dramatic  
experience that's  
absolute beauty in  
motion. 1.7 fl. oz.  
**081-187** reg. \$20

**\$16**

Top: **Elegant Plum,**  
Tangy Bergamot, Pear  
Mid: **Intoxicating Rose,**  
Candied Iris, Jasmine  
Base: **White Patchouli,**  
Rich Cedarwood,  
Oakmoss





soft floral

**Avon Classics Odyssey Cologne**Tuberose, ylang-ylang and oakmoss. 1.7 fl. oz. **900-391**

reg. \$20

**\$16**

woody floral

**Avon Classics Night Magic Cologne**

Neroli, jasmine and musk.

1.7 fl. oz. **439-495** reg. \$20**\$16**

soft floral

**Avon Classics Candid Cologne**Bergamot, tuberose and patchouli. 1.7 fl. oz. **247-929**

reg. \$20

**\$16**

soft floral

**Avon Classics Soft Musk Cologne**Peach blossom, blonde woods and sheer musk. 1.7 fl. oz. **787-790**

reg. \$20

**\$16**

soft floral

**Avon Classics Sweet Honesty Cologne**

Lily of the valley, rose and cedarwood.

1.7 fl. oz. **901-861** reg. \$20**\$16**

fresh green

**Free O<sub>2</sub> Eau de Toilette**White peach tea, honeysuckle and musk. 1.7 fl. oz. **490-840**

reg. \$20

**\$16**

soft floral

**Avon Classics Dreamlife Cologne**

Mimosa flower, rose and amber.

1.7 fl. oz. **236-227** reg. \$20**\$16**

soft floral

**Avon Classics Timeless Cologne**Cardamom, jasmine and patchouli. 1.7 fl. oz. **369-230**

reg. \$20

**\$16****FOR \$21** mix or match, any two for discount to apply, pages 96-97.

**NEW**

**LIMITED EDITION**

fruity floral

**Far Away Rio  
Eau de Parfum**

Juicy mango, coconut water  
and sweet cashew milk. 1.7 fl. oz.

220-810 reg. \$32

**\$25**



fruity floral

**Far Away Bali Eau de Parfum**

Grapefruit, salted tuberose and amber.

1.7 fl. oz. **451-389**

reg. \$32

**\$25**



soft amber

**Far Away Gold Eau de Parfum**

Ylang-ylang, jasmine and vanilla.

1.7 fl. oz. **888-297**

reg. \$32

**\$25**



amber floral

**Far Away Moroccan Nights Eau de Parfum**

Powdery orris, Moroccan mimosa, orange flower  
and creamy cashmere woods. 1.7 fl. oz.

612-655 reg. \$32

**\$25 \$12.99**



fruity floral

**Far Away Infinity Eau de Parfum**

Bergamot, jasmine sambac and sandalwood.

1.7 fl. oz. **888-301**

reg. \$32

**\$25**

a wanderlust  
for the exotic



amber floral

**Far Away Eau de Parfum**  
1.7 fl. oz. 220-422 reg. \$32  
**\$25**

Top: Bergamot, Freesia, Peach  
Mid: Jasmine Absolute,  
Ylang-Ylang, Orange Blossom  
Base: Vanilla Absolute, Musk,  
Enticing Amber



**NEW**

**LIMITED EDITION**

**Haiku Kyoto Flower Diffuser Tile Gift Set**

Fresh green. Violet leaf, white peony and soft cotton musk.  
Hang or place the scented tile in your preferred location.

Includes:

- **Haiku Kyoto Flower Mini Eau de Parfum**, .13 fl. oz.
- **Embossed diffuser tile**, clay, approx. 2 $\frac{1}{8}$ " H x 2 $\frac{1}{8}$ " W.
- **Decorative ribbon**, polyester.

221-730 reg. \$32

**\$25**

**BOXED**

**3-PIECE SET**



woody floral

**Haiku Sunrise Eau de Parfum**

Coconut water, rhubarb and cedarwood.

1.7 fl. oz. **091-500**  
reg. \$32

**\$25**



fresh green

**Haiku Kyoto Flower Eau de Parfum**

Violet leaf, white peony and cotton musk. 1.7 fl. oz.

**253-677** reg. \$32

**\$25**



fresh green

**Haiku Reflection Eau de Parfum**

Water accord, acacia blossom and amber wood. 1.7 fl. oz.

**617-657** reg. \$32

**\$25**

a sense of  
harmony and  
elegance

★★★★★

Clean, fresh, soft...  
If I could choose  
only one fragrance,  
this would be it.

*-online reviewer*



fresh green

**Haiku**  
Eau de Parfum  
1.7 fl. oz. 521-170  
reg. \$32

**\$25**

Top: Japanese Yuzu,  
Sweet Pomegranate,  
Summer Pear  
Mid: Muguet, Freesia,  
Tuberose  
Base: Blonde Woods,  
Soft Musks, Vetiver



woody floral

**Imari Amor Eau de Parfum**

Black currant, orris and warm musk.

1.7 fl. oz. **762-573** reg. \$32

**\$25 \$18.49**



soft amber

**Imari Eau de Toilette**

Bergamot, jasmine and amber. 1.7 fl. oz.

**047-038** reg. \$32

**\$25**

embrace your desire

amber floral

**Imari Seduction**

**Eau de Toilette**

Wild berries, purple orchid and patchouli.

1.7 fl. oz. **340-349**

reg. \$32

**\$25**





soft floral

**Rare Pearls Eau de Parfum**

Magnolia, white pepper and rosewood. 1.7 fl. oz. **389-235**  
reg. \$32

**\$25**



soft amber

**Rare Gold Eau de Parfum**

Mandarin zest, ylang-ylang and amber. 1.7 fl. oz. **828-767** reg. \$32

**\$25**



fruity floral

**Rare Amethyst Eau de Parfum**

Plum, violet and sandalwood. 1.7 fl. oz. **933-062**  
reg. \$32

**\$25**



soft amber

**Rare Pink Sapphire Eau de Parfum**

Pink pepper, delicate rosebud and sensual amberwood. 1.7 fl. oz. **804-657**  
reg. \$32

**\$25**

Packaging may vary.



**Haiku Body Lotion**  
6.7 fl. oz. **447-820**  
reg. \$15  
**\$11 \$7.99**



**Haiku Hand Cream**  
2.5 fl. oz. **574-998**  
reg. \$9  
**\$7**



**Far Away Body Lotion**  
6.7 fl. oz. **082-881**  
reg. \$15  
**\$11 \$7.99**



**Far Away Hand Cream**  
2.5 fl. oz. **369-169**  
reg. \$9  
**\$7**



**Rare Pearls Body Lotion**  
6.7 fl. oz. **082-915**  
reg. \$15  
**\$11 \$7.99**



**Rare Pearls Hand Cream**  
2.5 fl. oz. **575-019**  
reg. \$9  
**\$7**


 Best of  
K-Beauty

woody

Avon Moments

**Endless Highway Eau de Toilette**

Ambrette seed, fresh violet and earthy vetiver. 1.7 fl. oz.

623-462 reg. \$36

**\$28 \$15.99**

Avon Moments

**Endless Highway Body Wash**

7.7 fl. oz. 623-500 reg. \$19

**\$15 \$9.99**

amber floral

**Avon Moments Remember  
That Night Eau de Toilette**Sparkling grapefruit, opulent  
jasmine and amber. 1.7 fl. oz.

196-662 reg. \$36

**\$28 \$15.99**

soft amber

**Avon Moments Out On A Limb  
Eau de Toilette**Spicy cardamom, honeyed mimosa  
flower and powdery vanilla.

1.7 fl. oz. 196-112 reg. \$36

**\$28 \$15.99**

fruity floral

**Avon Moments Day Dreamer  
Eau de Toilette**

Quince, dewy iris and cedarwood.

1.7 fl. oz. 196-772

reg. \$36

**\$28 \$15.99****Avon Moments  
Remember That Night Body Wash**7.7 fl. oz. 196-768  
reg. \$19**\$15 \$9.99****Avon Moments  
Out On A Limb Body Wash**7.7 fl. oz. 196-442  
reg. \$19**\$15 \$9.99****Avon Moments  
Day Dreamer Body Wash**7.7 fl. oz. 196-844  
reg. \$19**\$15 \$9.99**

# IT'S YOUR LIFE, SHINE RADIANTLY.

fruity floral

**Live Out Loud Solar Vibes  
Eau de Parfum**

Bergamot, coconut water and  
fluffy marshmallow. 1.7 fl. oz.

835-822 reg. \$40

**\$30 \$22.49**



fruity floral

**Live Out Loud #4U  
Eau de Parfum**

Mandarin, peach blossom  
and vanilla. 1.7 fl. oz.

735-968 reg. \$40

**\$30 \$22.49**



fruity floral

**Live Out Loud  
Eau de Parfum**

Strawberry, mimosa and  
vanilla. 1.7 fl. oz.

142-000 reg. \$40

**\$30 \$22.49**



soft floral

**Today  
Eau de Parfum**

Magnolia blossoms, hibiscus  
petals and silk musk. 1.7 fl. oz.

490-855 reg. \$40

**\$30 \$22.49**

## IT'S YOUR LIFE, OWN IT.

**Live Out Loud  
Body Cream**  
Each, 5 fl. oz. reg. \$22  
**\$17 each**

**Retro Sun 047-300  
Guilt Free 047-320  
U Be U 048-000**

**Live Out Loud  
Body Mist**  
Each, 3.4 fl. oz. reg. \$22  
**\$17 each**

**Retro Sun 047-076  
Guilt Free 047-100  
U Be U 047-114**

fruity floral  
**Live Out Loud Retro Sun**  
Tropical mango, orange  
flower and rich amber.

fruity floral  
**Live Out Loud Guilt Free**  
Pink dragon fruit, violet leaf  
and creamy musk.

amber floral  
**Live Out Loud U Be U**  
Sweet fig, coconut praline  
and whipped vanilla.



# layers redefined.

amber floral

**LYRD Cherry Vetiver**  
**Eau de Parfum**

Sweet cherry, violet and rich  
vetiver. 1.7 fl. oz. **828-771**  
reg. \$45

**\$35**



## LIMITED EDITION

❖ **LYRD Flowerista**  
**Wooden Wick Candle**

Orange blossom, creamy coconut and  
warm vanilla. Unique wooden wick  
design gives 28 hours of a clean, even  
burn. 11 oz. net wt. 4 1/4" diam. x 3 1/8" H.  
Wooden wick, glass jar, plant-based wax.

Assembled in USA.  
**828-786** reg. \$30

**\$23**

Never leave burning candles unattended.  
Keep away from children and pets.





amber floral

**LYRD Sultry Orchid**

Pink saffron, red orchid and warm amber.

**Eau de Parfum**  
1.7 fl. oz. **892-960**  
reg. \$45

**\$35 \$25.99**

**Travel Spray**  
.3 fl. oz. **612-799**  
reg. \$19

**\$15 \$10.99**



fresh green

**LYRD Pear Blossom & Bamboo Eau de Parfum**

Lemon zest, dewy bamboo and sweet pear blossom. 1.7 fl. oz. **763-804** reg. \$45

**\$35 \$25.99**



fresh green

**LYRD Coastal Lotus Eau de Parfum**

Sparkling mandarin, island gardenia and lotus flower. 1.7 fl. oz. **869-906** reg. \$45

**\$35 \$25.99**



amber floral

**LYRD Vanilla Rose**

Dewy roses, comforting vanilla and cedarwood.

**Eau de Parfum**  
1.7 fl. oz. **094-020** reg. \$45

**\$35 \$25.99**

**Travel Spray**  
.3 fl. oz. **505-128** reg. \$19

**\$15 \$10.99**



fresh green

**LYRD Honeysuckle Blossom**

Apple blossom, honeysuckle nectar and vanilla orchid.

**Eau de Parfum**  
1.7 fl. oz. **167-270**  
reg. \$45

**\$35 \$25.99**

**Hair and Body Mist**  
3.25 fl. oz. **167-231** reg. \$19

**\$15 \$10.99**

Packaging may vary.



fresh citrus

**LYRD Clementine & Poppy Eau de Parfum**

Clementine, poppy flowers and sheer musk. 1.7 fl. oz. **922-384** reg. \$45

**\$35 \$25.99**



woody

**Mesmerize Black  
Eau de Toilette**

Pepper, nutmeg and tonka bean.  
3.4 fl. oz. **539-330** reg. \$34

**\$27**



fresh aromatic

**Perceive Cologne**

Citrus, earthy sage and calming cedarwood.  
3.4 fl. oz. **888-062** reg. \$34

**\$27**



fresh aromatic

**Mesmerize Aqua Eau de Toilette**

Fresh basil, watery coconut and cedarwood.  
3.4 fl. oz. **888-077** reg. \$34

**\$27**

reveal your  
mysterious side



Since its  
introduction,  
Mesmerize  
has been MY  
fragrance and  
guarantees  
comments.

*-online reviewer*



fresh aromatic

**Mesmerize Cologne**

3.4 fl. oz.

674-030 reg. \$34

**\$27**

Top: Bergamot,  
Mandarin, Apple  
Mid: Coriander, Spicy  
Cardamom, Myrrh  
Base: Amber, Vanilla,  
Precious Woods



woody

**Black Suede Eau de Toilette**  
Bergamot, leather and oakmoss.  
3.4 fl. oz. 526-937 reg. \$27

**\$21**



**Black Suede**  
**Hair & Body Wash**  
5 fl. oz. 230-200  
reg. \$10

**\$8**



woody

**Black Suede**  
**The Blend**  
**Eau de Toilette**  
Aged rum-soaked  
casks, smoky leather  
and spicy woods.  
3.4 fl. oz.  
433-865  
reg. \$32

**\$25**

# wild at heart



## LIMITED EDITION

amber floral

### Wild Country for Her Eau de Parfum Decanter

Show your true grit with an unabashed blend of juicy passionfruit, creamy tuberose and soft suede in a collectible boot decanter. 5 fl. oz.

302-357 reg. \$32

**\$25**

## LIMITED EDITION

fresh aromatic

### Wild Country Cologne Decanter

A favorite for over 50 years! The undeniably untamed spirit of Wild Country, a rugged blend of lavender, coriander seed and sandalwood, in a collectible boot decanter. 5 fl. oz.

301-202 reg. \$32

**\$25**



fresh aromatic

### Wild Country Cologne

Lavender, coriander seed and sandalwood. 3 fl. oz. 383-457  
reg. \$27

**\$21**

Packaging may vary.



### Wild Country Aftershave Splash

4 fl. oz. 366-432  
reg. \$18

**\$15**



### Wild Country Hair & Body Wash

5 fl. oz. 247-895  
reg. \$10

**\$8**



## BLACK SUEDE SET

Woody. Bergamot, leather and oakmoss.

Set includes:

- **Eau de Toilette** 3.4 fl. oz.
- **Hair & Body Wash** 5 fl. oz.
- **Roll-On Anti-Perspirant Deodorant** 2.6 fl. oz.

**\$22.99**

**3-PIECE SET**

**\$43.25 VALUE**

**908-794**



## WILD COUNTRY SET

Fresh aromatic. Lavender, coriander seed and sandalwood.

Set includes:

- **Cologne** 3 fl. oz.
- **Hair & Body Wash** 5 fl. oz.
- **Roll-On Anti-Perspirant Deodorant** 2.6 fl. oz.

**\$22.99**

**3-PIECE SET**

**\$43.25 VALUE**

**907-491**



## HAIKU SUNRISE SET

Set includes:

- **Haiku Sunrise Eau de Parfum**  
Woody floral. Coconut water, rhubarb and cedarwood. 1.7 fl. oz.
- **Haiku Roll-On Anti-Perspirant Deodorant**  
2.6 fl. oz.
- **Haiku Body Lotion**  
Fresh green. Japanese yuzu, delicate muguet and blonde woods. 6.7 fl. oz.

**\$24.99**

**3-PIECE SET**

**\$53.25 VALUE**

910-403



## FAR AWAY MOROCCAN NIGHTS SET

Set includes:

- **Far Away Moroccan Nights Eau de Parfum**  
Amber floral. Powdery orris, Moroccan mimosa, orange flower and creamy cashmere woods. 1.7 fl. oz.
- **Far Away Body Lotion**  
Amber floral. Freesia, sheer jasmine and enticing amber. 6.7 fl. oz.
- **Far Away Hand Cream**  
2.5 fl. oz.

**\$19.99**

**3-PIECE SET**

**\$56 VALUE**

922-729



## FAR AWAY BALI SET

Set includes:

- **Far Away Bali Eau de Parfum**  
Fruity floral. Grapefruit, salted tuberose and amber. 1.7 fl. oz.
- **Far Away Perfumed Skin Softener**  
Amber floral. Freesia, sheer jasmine and enticing amber. 5 fl. oz.
- **Far Away Roll-On Anti-Perspirant Deodorant**  
2.6 fl. oz.

**\$23.99**

**3-PIECE SET**

**\$45.25 VALUE**

923-050





## fruit gets cute

All the tools needed to easily make fun fruit snacks or elaborate edible creations.



#### ❖ Fruit Basket with Banana Holder

Allows for air circulation to prevent resting bruises on fruit. Hanger saves counter space and detaches for easy storage. 9¼" diam. x 14¾" H. Coated steel wire. Hand wash only. Imported. **659-295** reg. \$25

**\$20**



#### ❖ Strawberry Cutter

Easily slices strawberries for a fast snack. 4⅞" L x 3" W x 1¼" H. Stainless steel, BPA-free plastic. Hand wash only. Imported. **659-329** reg. \$14

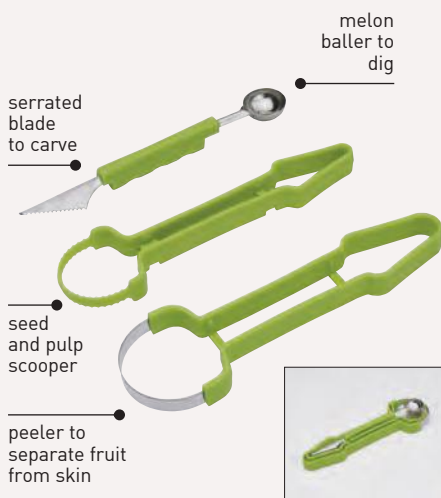
**\$11**



#### ❖ Pineapple Corer

Cores and rings pineapple with an effortless twist. Comfortable, non-slip handle. 4" diam x 9½" H. Stainless steel, BPA-free plastic. Dishwasher safe. Imported. **659-300** reg. \$13

**\$10**



#### ❖ 3-in-1 Fruit Slicer

Trio of nesting tools to easily prepare fruit snacks and carved creations. Melon baller, 1⅞" W x 7½" H, seed and pulp scooper, 2⅞" W x 7¾" H, peeler, 3" W x 8¼" H. Stainless steel and BPA-free plastic. Dishwasher safe. Imported. **659-314** reg. \$17

**\$13 the set**



# add pep to your prep

Color-coded organization meets space-saving storage for fuss-free meal prep.



#### ❖ Cutting Board with Colander

A great space-saving solution! Chop, rinse, drain and store—all in one! Expandable to fit 24" W kitchen sinks. 16½"-24½" L (when fully expanded) x 9½" W x 2½" D. BPA-free plastic. Hand wash only. Imported. **659-348** reg. \$25

**\$20**



#### ❖ 5-Piece Coated Knife Set

All the essential knives to slice, dice, mince and cut. Color coded, non-stick finish. Includes bread knife, 13" L, chef's knife, 12" L, carving knife, 12" L, utility knife, 9" L, and paring knife, 7" L. Coated stainless steel, BPA-free plastic handles with rubber grips. Hand wash only. Imported. **659-333** reg. \$25

**\$20 the set**



#### ❖ 12-Piece Plastic Container Set

Color coded to help organize your food prep by portion size. Nesting containers (six) and lids (six) for space-saving storage. BPA-free plastic. Smallest: 5" L x 3½" W x 1½" H, 7 fl. oz.; largest: 10" L x 8½" W x 3" H, 92 fl. oz. Top-rack dishwasher and microwave safe. Imported. **659-352** reg. \$13

**\$10 the set**



#### ❖ Plastic Measuring Spoons

Six colorful measuring spoons nest and stack for neat storage. Includes ½ tbsp., 1 tbsp., ¼ cup, ½ cup, ⅓ cup and 1 cup. BPA-free plastic. Hand wash only. Imported. **659-371** reg. \$10

**\$8 the set**

**NEW**

❖ **Botanical Sheer Cardigan**

Floral-print chiffon cardigan with open front and long sleeves. Maxi length and relaxed fit. Slightly sheer. Doubles as a beach cover-up. 100% polyester.

Center back length: 50" on M; 51" on 1X. Machine wash, line dry. Imported.

S(4-6) **697-033**

M(8-10) **697-048**

L(12-14) **697-344**

XL(16) **697-397**

1X(18W-20W) **697-693**

2X(22W-24W) **697-708**

3X(26W-28W) **701-774**

reg. \$45

**\$35**



RELAXED FIT  
and maxi  
length

Sunglasses, sandals, top and pants not sold.

# such a breeze

Florals that float and flow, plus a wrap skirt that doubles as a beach cover-up.



Bikini top and sandals not sold.



SLIGHTLY SHEER with a botanical print



Sunset Sail Collection sold on page 140.

Bikini top and sandals not sold.

## NEW

### ❖ Wrap Skirt

Textured knit faux-wrap skirt with elastic waistband and side tie. Midi-length. Doubles as a beach cover-up. Polyester/spandex. Center back length: 33" on all sizes. Machine wash and dry. Imported.

S(4-6) 693-540	1X(18W-20W) 696-515
M(8-10) 693-554	2X(22W-24W) 696-644
L(12-14) 693-884	3X(26W-28W) 696-678
XL(16) 695-360	

reg. \$40

**\$30**

# zest for summer

Energize your look with pops of orange and turquoise stripes, plus textured tops.

**TEXTURED**  
woven top  
with elastic at  
sleeves and  
hem

## NEW

### ❖ Elastic Waist Top

Textured white woven short-sleeve top. Features round neckline with keyhole and button at back neck. Covered elastic at bottom of sleeves and hem. 100% polyester. Center back length: 24½" on M; 26" on 1X. Machine wash and dry. Imported.

S(4-6) **680-251**

M(8-10) **688-066**

L(12-14) **688-180**

XL(16) **688-420**

1X(18W-20W) **688-578**

2X(22W-24W) **689-995**

3X(26W-28W) **690-320**

reg. \$33

**\$25**

Sunset Sail Collection sold on page 140.

Wrap Skirt sold on page 121.

MESH  
TOP with  
textured  
stripes



Santorini Luxe Hoop Earrings  
sold on page 138.

**NEW**

❖ **Stripe Mesh Top**

Turquoise sheer mesh top with textured stripes. Round neckline and short sleeves. 100% cotton. Center back length: 22" on M; 24" on 1X. Machine wash, line dry. Imported. reg. \$45

**\$35**

S(4-6) **696-682**  
M(8-10) **696-697**  
L(12-14) **696-716**  
XL(16) **696-921**  
1X(18W-20W) **697-000**  
2X(22W-24W) **697-014**  
3X(26W-28W) **697-029**

APPAREL SIZE CHART			
SIZE	BUST	WAIST	HIP
<b>XS</b> 0/2	30.5"-32"	23.5"-25"	32.5"-34"
<b>S</b> 4/6	33.5"-35"	26.5"-28"	35.5"-37"
<b>M</b> 8/10	36.5"-38"	29.5"-31"	38.5"-40"
<b>L</b> 12/14	39.5"-41"	32.5"-34"	41.5"-43"
<b>XL</b> 16	43"-44"	35.5"-36.5"	44.5"-45.5"
<b>1X</b> 18W/20W	46.5"-48.5"	39"-41"	48"-50"
<b>2X</b> 22W/24W	50.5"-52.5"	43"-45"	52"-54"
<b>3X</b> 26W/28W	54.5"-56.5"	47"-49"	56"-58"



3-PIECE SET



Cherry On Top Bag Charm sold on page 139.

**COSMETIC POUCH** with removable strap

**WATER-RESISTANT PHONE CASE** with removable lanyard, plus a clear panel that's touch screen accessible

# beachy keen

The ultimate carryall that carries it all, perfect for beach day getaways.

**NEW**

❖ **Beach Tote Bundle**

Three-piece bundle. Large open-top mesh tote with front pocket and shoulder straps. Cosmetic pouch with zip closure and removable strap. Water-resistant phone case features removable lanyard and clear panel for touch screen access. 100% polyester; phone case: man-made materials. Tote: 15" L x 6" W x 18½" H. Shoulder strap drop: 10" L. Pouch: 9" L x 7½" H. Phone case: 3¼" L x 6½" H. Imported.

**145-990**  
reg. \$49

**\$39 the set**



MESH tote with shoulder straps and front pocket

**NEW**❖ **Sunset Tide Dress**

Textured knit dress with multicolor abstract print. Features shoulder straps, side slits and side seam pockets. Polyester/spandex. Center back length: 44" on M; 45" on 1X. Machine wash and dry. Imported.

S(4-6) **701-789**

M(8-10) **701-793**

L(12-14) **702-159**

XL(16) **702-163**

1X(18W-20W) **703-160**

2X(22W-24W) **703-231**

3X(26W-28W) **703-250**

reg. \$45

**\$35**

**SIDE SEAM  
POCKETS  
and side  
slits**



# make waves

A splashy print with vibrant vibes takes you from beach-to-pool-to-street. And repeat!

Heartland  
Americana  
Collection sold  
on page 160.

2-PIECE  
SET

# perfect pairings

Look effortlessly chic with an easy-wearing set.

## ❖ Two-Piece Short Set

Navy two-piece lightweight set. Sleeveless top with V-neck and button front. Shorts with side pockets, zip front with button, and back elastic waist. 100% polyester. Center back length: 26" on M; 27½" on 1X. Inseam: 6" on M; 7" on 1X. Machine wash, line dry. Imported.

S(4-6) 059-300	1X(18W-20W) 059-391
M(8-10) 059-315	2X(22W-24W) 059-425
L(12-14) 059-368	3X(26W-28W) 059-463
XL(16) 059-372	

reg. \$47

**\$37 the set**

## ❖ Buckle Strap EVA Sandals

Silver metallic slides with adjustable buckle straps. Man-made materials. Imported.

6 265-309	9 268-092
7 268-073	10 268-111
8 268-088	11 268-771

reg. \$29

**\$22**





2-PACK

❖ **Two-Pack Sleep Shirts**

Includes ivory/cherry print and red/white graphic soft-stretch sleep shirts. Round neckline and short sleeves. Modal/spandex. Center back length: 38" on M; 39" on 1X. Machine wash and dry. Imported.

- S(4-6) **269-950**
  - M(8-10) **270-524**
  - L(12-14) **271-152**
  - XL(16) **271-224**
  - 1X(18W-20W) **320-583**
  - 2X(22W-24W) **347-013**
  - 3X(26W-28W) **347-028**
- reg. \$45

**\$35 the pack**

# toe-riffic!

Treat your feet to fun and festive fireworks and stars.



2-PACK

❖ **Two-Pack Celebration Socks**

Includes two printed pairs. Polyester/spandex. Fits shoe sizes 6-10. Machine wash and dry. Imported.

**059-243**  
reg. \$11

**\$9 the pack**





❖ **Palm Print Sleeveless Dress**

Palm-print sleeveless dress with subtle V-neck, side pockets and elastic waist. Polyester/spandex. Center back length: 41" on M; 42" on 1X. Machine wash, line dry. Imported.

S(4-6) 238-014  
 M(8-10) 238-052  
 L(12-14) 238-139  
 XL(16) 251-177  
 1X(18W-20W) 255-024  
 2X(22W-24W) 259-130  
 3X(26W-28W) 261-600  
 reg. \$50

**\$40**



A

A. ❖ **Butterfly Sleeve Blouse**

Hibiscus pink button-down shirt with butterfly split sleeves and tonal border trim. Relaxed fit. 100% polyester. Center back length: 29½" on M; 31" on 1X.

Machine wash, dry flat. Imported.  
 S(4-6) 880-080 1X(18W-20W) 880-349  
 M(8-10) 880-277 2X(22W-24W) 880-918  
 L(12-14) 880-281 3X(26W-28W) 880-960  
 XL(16) 880-334  
 reg. \$50

**\$40**

B. ❖ **Relaxed Shirt Dress**

White with blue floral-print dress, with collar, ¾-length sleeves, side seam pockets and side slits at hem. Knee-length. 100% rayon. Center back length: 45" on all sizes. Machine wash, line dry. Imported.

S(4-6) 876-650 1X(18W-20W) 879-626  
 M(8-10) 876-794 2X(22W-24W) 879-808  
 L(12-14) 879-076 3X(26W-28W) 880-057  
 XL(16) 879-611  
 reg. \$54

**\$43**



B



#### ❖ Fishnet Back Top

Textured woven top with round neckline and short sleeves with rolled hem. Features fishnet mesh back panel and high-low silhouette. Front: viscose/cotton/flax linen. Back: 100% cotton. Center back length: 27" on M; 28½" on 1X. Hand wash, line dry. Imported.

S(4-6) **396-453** 1X(18W-20W) **403-753**  
 M(8-10) **396-487** 2X(22W-24W) **419-160**  
 L(12-14) **396-491** 3X(26W-28W) **436-520**  
 XL(16) **403-347**  
 reg. \$45

**\$35**

#### ❖ Watercolor Floral Top

White lightweight button-down top with black and grey watercolor prints. Relaxed fit. Polyester/cotton. Center back length: 33" on M; 34" on 1X. Machine wash and dry. Imported.

S(4-6) **237-830** 1X(18W-20W) **237-940**  
 M(8-10) **237-845** 2X(22W-24W) **237-960**  
 L(12-14) **237-921** 3X(26W-28W) **237-974**  
 XL(16) **237-936**  
 reg. \$50

**\$40**

### A. ❖ Two-Pack Shirt Vests\*

Includes coral and mint cotton-knit vest tops. Features front placket with tonal buttons and round neckline. 100% cotton. Center back length: 21" on M; 24" on 1X.

S(4-6) **445-808** 1X(18W-20W) **447-337**  
M(8-10) **445-922** 2X(22W-24W) **447-997**  
L(12-14) **446-732** 3X(26W-28W) **448-520**  
XL(16) **446-747**  
reg. \$33

**\$25 the pack**

### B. ❖ Walking Shorts\*

Natural-colored linen-blend shorts hit just above the knee. Features side pockets and belt loops. Front zip with button closure and elastic back waistband. Polyester/rayon/linen/nylon. Inseam: 11" on all sizes.

S(4-6) **403-480** 1X(18W-20W) **444-562**  
M(8-10) **403-787** 2X(22W-24W) **445-391**  
L(12-14) **443-824** 3X(26W-28W) **445-702**  
XL(16) **444-103**  
reg. \$43

**\$33**

### C. ❖ Lace Foot Covers\*

No-show lace foot covers. Stretchy and lightweight for ventilation and comfort. Features gel grip around the top. Nylon/cotton/spandex. Fits shoe sizes 6-10.

reg. \$10  
**\$8 each pair**

White 170-640  
Pink 170-655

### D. ❖ Slip-On Sneakers

Natural-colored textured canvas slip-on sneakers with hibiscus pink contrast padded insole and white rubber outsole. Dual side elastic gore for easy on/off. Man-made materials.

6 **167-045** 8 **167-466** 10 **167-781**  
7 **167-079** 9 **167-739** 11 **167-815**  
reg. \$29

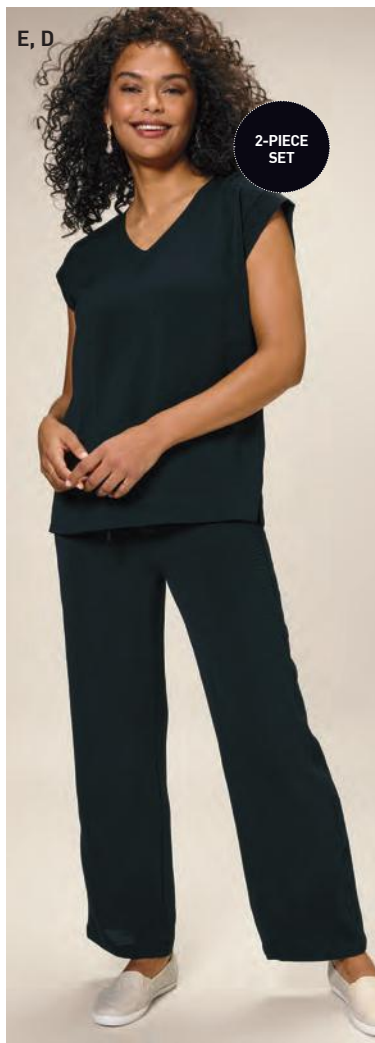
**\$22**

### E. ❖ Crochet-Trim Two-Piece Set\*

Black two-piece set. Top with subtle V-neck, short sleeves and crochet trim at shoulders. Pull-on pants with drawstring elastic waistband and side seam pockets. Features crochet trim along side seam. 100% polyester. Center back length: 24" on M; 26" on 1X. Inseam: 29" on all sizes.

S(4-6) **091-715** 1X(18W-20W) **092-180**  
M(8-10) **091-720** 2X(22W-24W) **092-491**  
L(12-14) **091-734** 3X(26W-28W) **094-733**  
XL(16) **091-749**  
reg. \$50

**\$40 the set**



# bring on the fringe

...and stripes!

Totes ready for summer.

## ❖ Boho Fringe Top\*

Cream/black top with round neckline, short sleeves and crochet and fringe trim. Cotton/polyester. Center back length: 25" on M; 26" on 1X.

S(4-6) <b>100-324</b>	1X(18W-20W) <b>134-336</b>
M(8-10) <b>104-076</b>	2X(22W-24W) <b>161-970</b>
L(12-14) <b>104-258</b>	3X(26W-28W) <b>166-823</b>
XL(16) <b>104-937</b>	
reg. \$45	

**\$35**

## ❖ Tonal Embroidered Blouse\*

White button-down blouse with short sleeves, rolled hem and tonal embroidery at bottom. Oversized, relaxed fit. Rayon/polyester/spandex. Center back length: 28" on M; 29" on 1X.

S(4-6) <b>167-982</b>	1X(18W-20W) <b>170-454</b>
M(8-10) <b>168-276</b>	2X(22W-24W) <b>170-488</b>
L(12-14) <b>170-325</b>	3X(26W-28W) <b>170-492</b>
XL(16) <b>170-440</b>	
reg. \$47	

**\$37**

## ❖ Striped Canvas Bag

Striped tote bag with faux-leather trim. Includes top zip closure, inside zip pocket and two slot pockets. Body/lining: 100% polyester. Trim: man-made materials. 20" L x 5" W x 12½" H. Strap drop: 11½" L. **091-700**  
reg. \$49

**\$39**



Pearly Tides  
Bag Charm  
sold on  
page 154.

\*Machine wash, line dry. \*Machine wash and dry.

# summer's calling

## A. ♦ Gingham Button-Down Top\*

Textured woven button-down top with a fuchsia gingham print in an oversized relaxed fit. Features right chest pocket and side slits. Polyester/spandex. Center back length: 31½" on M; 32½" on 1X.

S(4-6) **537-725** 1X(18W-20W) **535-244**  
 M(8-10) **537-854** 2X(22W-24W) **537-433**  
 L(12-14) **537-984** 3X(26W-28W) **537-710**  
 XL(16) **538-004**  
 reg. \$47

**\$37**

## B. ♦ Mixed Stripe Top\*

Navy/white mixed stripe-print top with point collar, short sleeves with rolled edges and button front. Features mini stripe print on back panel with button placket. Polyester/spandex. Center back length: 25" on M; 26½" on 1X.

S(4-6) **540-072** 1X(18W-20W) **540-948**  
 M(8-10) **540-087** 2X(22W-24W) **540-986**  
 L(12-14) **540-091** 3X(26W-28W) **541-102**  
 XL(16) **540-130**  
 reg. \$43

**\$33**

## C. ♦ Button-Front Sleeveless Dress\*

Natural-colored sleeveless dress with point collar and button front. Features fringe detail at bottom hem and twisted rope-like belt with fringe ends. Polyester/rayon/linen/cotton/nylon. Center back length: 37" on M; 39" on 1X.

S(4-6) **534-912** 1X(18W-20W) **535-024**  
 M(8-10) **534-950** 2X(22W-24W) **535-153**  
 L(12-14) **535-005** 3X(26W-28W) **535-210**  
 XL(16) **535-010**  
 reg. \$54

**\$43**

## D. ♦ Three-Pack Tees\*

Includes plum, white with floral embroidery and blue tees with round neckline, short sleeves and straight hem. 100% cotton. Center back length: 23" on M; 25" on 1X.

S(4-6) **449-382** 1X(18W-20W) **453-510**  
 M(8-10) **450-875** 2X(22W-24W) **457-167**  
 L(12-14) **451-556** 3X(26W-28W) **458-307**  
 XL(16) **451-594**  
 reg. \$47

**\$37 the pack**



3-PACK SET

Shoes not sold.



2-PACK SET

Tan shoes not sold.



Contents not included.

**E. ♦ Two-Pack Dresses\***

Includes black/white striped and solid black dresses with round neckline, short sleeves, side seam pockets and side slits. Polyester/rayon/spandex. Center back length: 37" on M; 39" on 1X.

S(4-6) <b>458-330</b>	1X(18W-20W) <b>458-637</b>
M(8-10) <b>458-379</b>	2X(22W-24W) <b>458-675</b>
L(12-14) <b>458-398</b>	3X(26W-28W) <b>458-709</b>
XL(16) <b>458-421</b>	

reg. \$50

**\$40 the pack**

**F. ♦ Vinyl Tote Bag**

Purple holographic tote bag with matching cosmetic pouch. Tote with purple webbing shoulder straps. Detachable cosmetic pouch with zip closure. Man-made materials. Tote: 15½" L x 3½" W x 13½" H. Strap drop: 11" L. Pouch: 7" L x 4" H.

**634-045**  
reg. \$25

**\$20**

**G. ♦ Double-Strap Jelly Sandals**

Coral jelly sandals with double straps and slip-on styling. Man-made materials.

6 <b>767-886</b>	8 <b>850-863</b>	10 <b>858-242</b>
7 <b>786-224</b>	9 <b>858-223</b>	

reg. \$25

**\$20**



Drift Away Anklet Set sold on page 151.



\*Machine wash, line dry. †Machine wash and dry.

# day to dress-up

## A. ❖ Textured Pullover†

Textured knit pullover features watercolor floral print on front panel and solid violet back panel. Oversized fit with shark bite hem. Polyester/spandex. Center back length: 27½" on M; 29" on 1X.

S/M 538-114

L/XL 539-986

1X/2X 540-020

reg. \$47

**\$37**

## B. ❖ Dual Pouch

Four-piece set includes two sand-colored pouches: a phone-case-sized pouch and smaller wristlet. Two detachable strap options include a tonal crossbody strap and glitter-stripe wristlet strap. 100% polyester. Larger pouch: 7½" L x 5" H. Smaller pouch: 4½" L x 4" H. Crossbody strap: 30" L when fully extended. Wristlet strap: 7" L.

538-080

reg. \$25

**\$20 the set**

## C. ❖ White Easy Capri Pants\*

White stretch-twill, pull-on capri pants with elastic waistband, side seam pockets and side slits at bottom. Features a slight wide-leg/flared silhouette. Rayon/nylon/spandex.

Inseam: 21" on all sizes.

S(4-6) 541-189 1X(18W-20W) 542-132

M(8-10) 541-231 2X(22W-24W) 542-788

L(12-14) 541-250 3X(26W-28W) 542-811

XL(16) 542-075

reg. \$43

**\$33**

## D. ❖ Crochet-Trim Top with Tie

Turquoise-colored woven blouse with ¾-length sleeves. Features round neckline with tie with decorative beads, and crochet trim at sleeves and bottom hem. Body: polyester/spandex. Trim: 100% polyester. Center back length: 27" on M; 28 on 1X.

S(4-6) 222-100 1X(18W-20W) 222-152

M(8-10) 222-114 2X(22W-24W) 222-167

L(12-14) 222-129 3X(26W-28W) 222-190

XL(16) 222-133

reg. \$43

**\$33**



**E. ♦ Two-Pack Handkerchief Tees\***

Includes two short-sleeve tops with round neckline and side slits. White with printed satin-front panel: one with black/ivory print, one with purple/white print. Body: 100% cotton. Print panel: polyester/spandex. Center back length: 25" on M; 26½" on 1X.

S(4-6) **222-391** 1X(18W-20W) **222-444**  
 M(8-10) **222-406** 2X(22W-24W) **222-459**  
 L(12-14) **222-410** 3X(26W-28W) **222-478**  
 XL(16) **222-430**  
 reg. \$45

**\$35 the set**



**F. ♦ Floral Robe Set\***

Pink/fuchsia floral-print two-piece set. Soft knit robe with long sleeves and self-tie belt. Sleeveless sleep shirt with round neckline. Polyester/spandex. Center back length for both: 25" on M; 36" on 1X.

S(4-6) **221-81** 1X(18W-20W) **221-869**  
 M(8-10) **221-835** 2X(22W-24W) **221-873**  
 L(12-14) **221-840** 3X(26W-28W) **221-888**  
 XL(16) **221-854**  
 reg. \$59

**\$47 the set**



**G. ♦ Embroidered Floral Dress\***

Black floral-embroidered mesh dress features round neckline and sheer short sleeves. Body is lined with soft knit underlayer. Back zipper. Knee-length fit. Body and lining: 100% polyester. Center back length: 39" on M; 41" on 1X.

S(4-6) **221-892** 1X(18W-20W) **221-964**  
 M(8-10) **221-907** 2X(22W-24W) **221-979**  
 L(12-14) **221-926** 3X(26W-28W) **221-983**  
 XL(16) **221-945**  
 reg. \$65

**\$50**



**H. ♦ Easy Capri Pants\***

Black stretch-twill capri pants with side seam pockets and elastic waistband for easy pull-on styling. Features narrow leg silhouette with side slits at the bottom. Rayon/nylon/spandex. Inseam: 21" on all sizes.

S(4-6) **222-210** 1X(18W-20W) **222-349**  
 M(8-10) **222-239** 2X(22W-24W) **222-368**  
 L(12-14) **222-262** 3X(26W-28W) **222-372**  
 XL(16) **222-300**  
 reg. \$43

**\$33**



**I. ♦ Two-Pack Mom Socks\***

Two pairs of ankle-length socks (white and rose pink) with mom-themed graphics. Polyester/spandex. Fits shoe sizes 6-10.

**221-797**  
 reg. \$13

**\$10 the pack**



\*Machine wash, line dry. †Machine wash and dry.

**Necklace and Earring Set**  
Beige cord, 32½" L with 3½" extender.  
Pierced earrings, 2¾" L.  
**148-616**  
reg. \$24  
**\$18 the set**

necklace and earring set

# blushing beauties

Warm and alluring neutrals awash in soft and subtle shades.

**NEW**

**Blushing Belle Collection**

Soft pinks, greys and champagne beads with goldtone accents.

**Bracelet Set**

Set of two. Stretches to fit most. **153-387**  
reg. \$16

**\$12 the set**

set of 2

**ALL NEW**

**Nomad Sun Layered Necklace**

Goldtone with clear glass stones and a strand of semi-precious rose quartz stones. Charm pendants with a reconstituted red stone accent. Shortest layer, 13¾" L"; longest layer, 18½" L with 3½" extender. Pendants, approx. ¾" L. **168-314**  
reg. \$25

**\$19**

strand of semi-precious rose quartz stones



**Frame Link Hoop Earrings**

Stacked rectangular goldtone hoops. 1" L. Pierced. **174-187**  
reg. \$11

**\$9**



**Edgy Sway Hoop Earrings**

Ribbed goldtone design. 1" L. Pierced. **172-370**  
reg. \$11

**\$9**



**Contour Loop Hoop Earrings**

Goldtone hoops with a sculptural twist. 1" L. Pierced. **168-371**  
reg. \$11

**\$9**

# summer spotlight

Channel the sun-soaked glamour  
of the Mediterranean.



**NEW**

**Santorini Luxe Collection**

Bold white and goldtone designs.

**Hoop Earrings**

Approx. 1¾" L. Pierced.

**178-068**

reg. \$16

**\$12**

**Link Necklace**

16½" L with 3½"  
extender. **175-700**  
reg. \$30

**\$23**



necklace,  
earring and  
ring set

**Pineapple Posh Three-Piece Set**

Goldtone with clustered pearly beads. 16½" L with 3½" extender. Pendant, 1" L. Pierced drops, approx. ¾" L. Ring, approx. ¾" L.

6 069-365 8 069-733 10 070-638  
reg. \$25

**\$19 the set**



**Fruity Cutie Collection**

Goldtone chain with fruit-themed charms.

**Layered Necklace**

Two-row necklace; one with pearly beads. Shortest, 16½" L; longest, 18½" L with 3½" extender.

068-646  
reg. \$17

**\$13**

# the fun bunch

The time is ripe for a bounty of fresh and fruity picks.



**Charm Bracelet**

With pearly bead accents. 7½" L with 1" extender.

068-650  
reg. \$17

**\$13**



cherry  
key chain  
can be used  
separately

**Cherry On Top Collection**

Red and green enamel set in goldtone.

**Statement Earrings**

Approx. 1½" L. Pierced. 070-915  
reg. \$16

**\$12**

**Bag Charm**

Includes knotted rope tassel with metal end caps. Approx. 6½" L (total length).

Cherry key chain, approx. 3" L. 072-535 reg. \$18

**\$14**

# cue up the color

Lively layers of cheerful  
and vibrant tones.

## NEW

### Sunset Sail Collection

A colorful mix of reconstituted  
stones and beads with pearly  
accents set in goldtone.

### Layered Bead Necklace

Shortest layer, 16½" L"; longest  
layer, 19½" L with 3½" extender.  
Lobster closure. **186-096**  
reg. \$25

**\$20**

### Layered Bead Bracelet

7½" L with 1"  
extender. Lobster  
closure. **186-589**  
reg. \$18

**\$14**

(see offer below)

### Bead Ring

½" W.

6 **186-760**

8 **186-961**

10 **187-020**

reg. \$13

**\$10**

**BUY THE NECKLACE,  
GET BRACELET FOR ONLY \$11.20**

page 140 only.

**NEW**

**Boho Soul Collection**

Antiqued silvertone with turquoise-colored reconstituted stones or beads.

**Charm Necklace**

26½" L with 3½" extender.  
Charm pendant drop, 2½" L.  
Lobster closure.  
**178-144**  
reg. \$17

**\$13**

**Dreamcatcher Earrings**

3" L. Pierced.  
**179-447**  
reg. \$17

**\$13**

**Hoop Earrings**

1½" L. Pierced.  
**179-629**  
reg. \$9

**\$7**



# big & bold

Substantial turquoise-like stones strike the perfect balance of boho and bright.

**Boho Oasis Collection**

Reconstituted turquoise-colored oval stone with pearly accents set in goldtone.

**Long Necklace**

With pearly beads. 19" L with 3½" extender. Pendant, 1¾" L.  
Lobster closure. **073-269** reg. \$18

**\$14**

**Drop Earrings**

1¾" L. Pierced. **073-307**  
reg. \$18

**\$14**

**Stretch Ring**

Stretches to fit most. **073-599**  
reg. \$13

**\$10**



**Mystic Voyage  
Collection**  
Celestial- and  
mystical-inspired  
charms set in  
goldtone.



set of 3



**Charm Necklace**  
Features eleven  
charms. Glass stones  
and mother-of-pearl  
accent. 16½" L  
with 3½" L  
extender. Charm,  
up to ½" L.  
Lobster closure.

**870-724**  
reg. \$20

**\$15**

**Bracelet Set**  
Set of three with  
shades of blue  
beads. Charm, ½" L.  
Stretches to fit most.

**870-959**  
reg. \$17

**\$13 the set**

**Drop Earrings**  
With colored  
glass stones and  
pearly accents.

3½" L. Pierced.  
**870-762**  
reg. \$17

**\$13**

**Star of the Shore  
Collection**  
Blue beads, pearly  
accents and starfish  
charm on a goldtone  
herringbone chain.



set of 3



**Layered Necklace**  
Three-row necklace.  
16½" L with 3½"  
extender. Charm,  
1" L. Lobster closure.

**871-166**  
reg. \$23

**\$17**

**Bracelet Set**  
Set of three. Charm,  
1" L. 7½" L with 1"  
extender. Blue bracelet  
stretches to fit most.

**871-280**  
reg. \$17

**\$13 the set**

**Blue Denim  
Drift Watch**  
Denim-like blue strap,  
9" L. Sleek goldtone  
case, 40mm x 38mm.  
Water-resistant  
to 3 ATM. Quartz  
movement.

**881-178**  
reg. \$40

**\$30**



set of 3

## cute-sea creatures

Turtles and seahorses, oh my! Playful pendants full of charm.

### NEW

#### Lagoon Mist Collection

Translucent green glass beads with faceted blue accent beads; plus goldtone paperclip chain and charms.

#### Necklace and Earring Set

Shortest layer, 16½" L"; longest layer, 21" L with 3½" extender. Pierced earrings, approx. 1½" L. **174-813** reg. \$25

**\$19 the set**

#### Bracelet Set

Set of three. Beaded bracelets stretch to fit most. Chain bracelet, 7½" L with 1" extender. **175-661** reg. \$18

**\$14 the set**



necklace and earring set



# soft & subtle

Delicate neutrals and organic-like shapes  
with hints of seaside charm.

### By the Shore Collection

Soft neutral tones set in goldtone.

#### Sandstone Necklace

With pearly beads. 16½" L with 3½"  
extender. Lobster closure. **073-660**  
reg. \$18

**\$14**

#### Coral Charm Hoop Earrings

With goldtone coral charm. 2" L.  
Pierced. **073-880**  
reg. \$13

**\$10**



### Hoop Earring

#### Pack

Two-pair  
pack includes  
polished  
goldtone and  
smooth resin  
hoops. 1" L.  
Pierced.

**073-675**  
reg. \$18

**\$14 the set**

set of 2 pairs



**Beachside Glam Collection**  
 Ocean-inspired colored ceramic charms set in goldtone.

**Necklace**  
 18" L with 3½" extender. Charms, approx. 1" L. **424-018**  
 reg. \$25  
**\$20**

**Earrings**  
 Approx. 1½" L. Pierced. **424-060**  
 reg. \$13  
**\$10**



# nautical & nice

Dive into the mermaid-core trend with siren-inspired accessories.

**Coral Cove Charm Collection**  
 Ocean-inspired colored ceramic charms with pearly accents set in goldtone.

**Necklace**  
 24" L with 3½" extender. Pendant drop, approx. 3¾" L. **424-424**  
 reg. \$24  
**\$18**

**Bracelet**  
 7½" L with 1" extender. Largest charm, approx. 1¼" L. **424-439**  
 reg. \$20  
**\$16**



**Summer State of Mind Bracelet Set**

Sets of three. Polished goldtone and colored beads with beach-inspired charms. Two stretch bracelets, stretch to fit most. One chain bracelet, 7¼" L with 1" extender. Lobster closure. Charm, ½" L. reg. \$18

**\$14 each set**

Sea Turtle/Multicolor  
424-443



Starfish/White  
424-458



# aquatic allure

The season's sweetest shore things are pretty and playful.

Seahorse/  
Blue  
446-402



**Coastal Collection**

Sculptural shapes and the look of mother-of-pearl framed in goldtone

**Current Ring**  
¾" W.  
6 423-930 8 423-944 10 423-959  
reg. \$10  
**\$8**

**Cascade Earrings**  
1¾" L. Pierced.  
420-869  
reg. \$13  
**\$10**



**Saltwater Treasures Charm Necklace**

Mother-of-pearl shell pendant and ceramic charms on a goldtone chain. 16½" L with 3½" extender. Pendant, approx. 1¾" L.  
 Seahorse/Blue **447-026**  
 Starfish/Pink **460-174**  
 reg. \$18

genuine mother-of-pearl

**\$14 each**



headband & scrunchie sets

**Sea Breeze Headband and Scrunchie Set**  
 Matching sets. Padded headband: polyester/man-made materials. Scrunchie: 100% polyester.

Pink **548-035** Blue **548-040**  
 reg. \$20

**\$15 each set**

Lotus/Pink  
686-321



Evil Eye/Blue  
694-747



Butterfly/Green  
767-097



## spirited shades

Get centered with symbolic sentiments surrounded by pretty pops of semi-precious-like stones.



### Spirit Within Pendant Necklace

Reconstituted stone pendant with the look of semi-precious pink quartz, blue sodalite and green aventurine, framed by crystal-like accents. Goldtone chain and center symbol. 1 1/2" L with 3/2" extender. Pendant, 1" L. reg. \$17

**\$13 each**

### Marble Motion Hoop Earrings

Reconstituted marble-like stone set in goldtone. Approx. 1 1/4" L. Pierced. Green 682-163 Blue 686-298 Pink 817-180 reg. \$13

**\$10 each pair**

**Sea Petals Statement Collection**  
Organically shaped pearl-like drops and turquoise-colored stones set in goldtone.

**Necklace**

16½" L with 3½" extender.  
Pendant, 2" L. **420-615**  
reg. \$20

**\$16**



**Earrings**

2¼" L. Pierced. **420-706**  
reg. \$13

**\$10**



**Sky Cuff Watch**

Silvertone textured cuff band and bezel case with turquoise-colored dial. Open cuff, one size fits most. Case, 22mm diam. Water-resistant to 3 ATM. Quartz movement. **767-609**  
reg. \$40

**\$30**



**Luna Collection**

Look of turquoise stones set in silvertone.

**Charm Necklace**

16½" L with 3½" extender. Charm, 1" L. Lobster closure.

**767-116**  
reg. \$20

**\$15**



**Charm Bracelet**

7¼" L with 1" extender. Charm, 1" L. Lobster closure. **767-594**  
reg. \$17

**\$13**



**Free Spirit Feather Drop Earrings**

Look of turquoise stone set in textured antiqued silvertone. 2" L. Pierced. **767-613**  
reg. \$10

**\$8**





pile on  
the charm...


in one, two, three!  
Customize your look with these  
coastal cuties.

**Link Up Paperclip  
Necklace**

Goldtone. 16½" L  
with 3½" extender.  
**858-515**  
reg. \$17  
**\$13**


**Island Dreaming  
Charm Set**

Set of three charms  
with iridescent  
resin, crystal-  
like-accented  
pearlesque drop  
and textured  
goldtone detailing.  
Approx. 1¼" L.  
Lobster closure.  
Clips onto the  
Link Up Paperclip  
Necklace and  
Bracelet.  
**870-671**  
reg. \$13  
**\$10 the set**




set of 3 charms are  
sold separately

**Island  
Dreaming Drop  
Earrings**



Goldtone  
seashell with  
crystal-like-  
accented  
pearlesque  
drop. Approx.  
1½" L. Pierced.  
**869-432**  
reg. \$13  
**\$10**

**Link Up  
Paperclip  
Bracelet**



Goldtone.  
7½" L with  
1" extender.  
**870-633**  
reg. \$10  
**\$8**



sets of 3 anklets:  
can be worn separately  
or together



Double-Strap Jelly Sandals  
sold on page 133.

## sweet sets

with sea-loving creatures,  
plus luxe layers with charm.

### Drift Away Anklet Set

Each set of three can be worn separately or together. Beaded and goldtone designs with sea creature charm. Each, 9" L with 1" extender. Lobster closure.

reg. \$13

**\$10 each set**

### Radiant Horizon Layered Necklace

Three-row necklace with colored beads and goldtone designs. Shortest layer, 16½" L; longest layer, 20" L with 3½" extender. Medallion pendant, approx. ¾" L.

870-121

reg. \$20

**\$15**



### Pearly Tides Collection

Pavé-accented charms and pearly drops set in goldtone.

#### Necklace

With pearly glass beads and natural conch shell charm. 18" L with 3" extender. Drop, approx 3½" L.

**421-626**  
reg. \$30

**\$23**

#### Bag Charm

Approx. 6" L. Lobster clasp.

**423-906**  
reg. \$17

**\$13**

#### Drop Earrings

Approx. 2" L.

Pierced.

**423-872**  
reg. \$16

**\$12**

#### Hoop Earrings

Approx. 2" L

(including drop).

Pierced. **423-887**  
reg. \$18

**\$14**



# sand, sea, shine

Gleaming beauties adorned with clusters of coastal charm.



semi-precious  
aventurine chips

**Sand & Sun Statement Collection**

Semi-precious red aventurine chips and sculptural goldtone shell pendant.

**Necklace**

16½" L with 3½" extender. Pendant, approx. 1½" L. **074-011** reg. \$20

**\$15**

**Earrings**

Approx. 2" L. Pierced. **074-160** reg. \$14

**\$11**



**Delicate Harmony  
Long Layered  
Necklace**

Three-row necklaces with textured medallion pendant. 24" L with 3½" extender. Pendant, ½" L. Lobster closure.

Purple/Silvertone **074-250**  
Green/Goldtone **074-231** reg. \$18

**\$14 each**

**Tropical**  
570-624

**Multicolor**  
(with pearly beads)  
565-557

**Coastal**  
570-610

**Seaside Views Eyeglass Chain**  
Colored beads and sea-themed charms set in goldtone. 31½" L with clasp closure and loops that fit most eyewear. reg. \$13

**\$10 each**

**Globetrotter**  
556-078

**Sea Life**  
563-903

**Beach Girl**  
556-082

**Charm Voyage Bracelet**  
Goldtone bangle with playful resin charms. One size fits most. reg. \$13

**\$10 each**

**Riviera Blue Collection**  
The look of turquoise set in goldtone.

**Statement Ring**  
With the look of turquoise and faux-agate stones.  
6 555-454  
8 555-579  
10 555-860  
reg. \$13

**\$10**

**Hoop Earrings**  
With the look of turquoise and faux-agate stones. Approx. 1" L. Pierced.  
555-291 reg. \$13

**\$10**

**Layered Necklace**  
Includes semi-precious sodalite, genuine mother-of-pearl and reconstituted green turquoise stones.  
Shortest layer, 16½" L; longest layer, 19" L with 3½" extender.  
549-008  
reg. \$25

**\$20**

**necklace and bracelets feature semi-precious stones**

**Bracelet Set**  
Set of two. Includes semi-precious sodalite, genuine mother-of-pearl and reconstituted green turquoise stones. Stretches to fit most.  
555-220  
reg. \$17

**\$13 the set**

set of 2

**Blushing Meadow Collection**

An assortment of soft pastel and natural tones with goldtone accents.

**Earring Set**

Three-pair set featuring goldtone, pastel pink and green hoops. Largest, approx. 1" L. Pierced.

570-859

reg. \$17

**\$13 the set**

pops of pastels

Soothing shades take center stage.

**Beaded Necklace**

24" L with 3½" extender.

570-830

reg. \$25

**\$20**

**Drop Earrings**

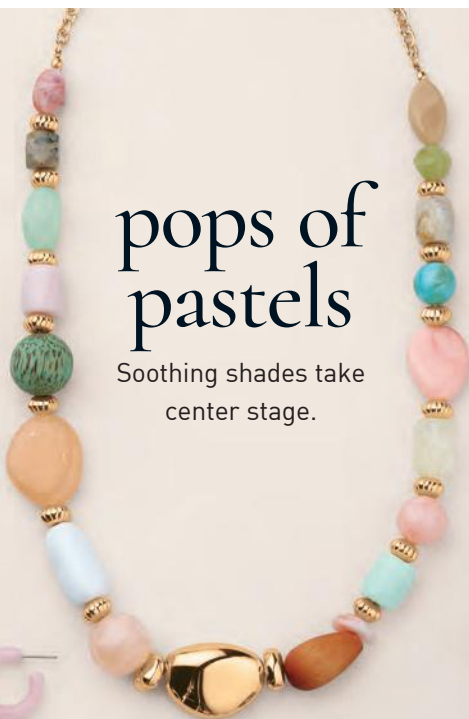
Swirled soft green and pink drops with beige textured accent. Approx. 2¾" L. Pierced.

570-844

reg. \$17

**\$13**

3-pair set



necklace and earring set



**Prism Flower Necklace and Earring Set**

Marquise- and round-cut glass stones in shades of rose, lilac, champagne and aqua set in silvertone. 16½" L with 3½" extender. Pendant, 1½" L. Lobster closure. Pierced studs, ¾" L. 585-040 reg. \$23

**\$17 the set**

necklace and earring set



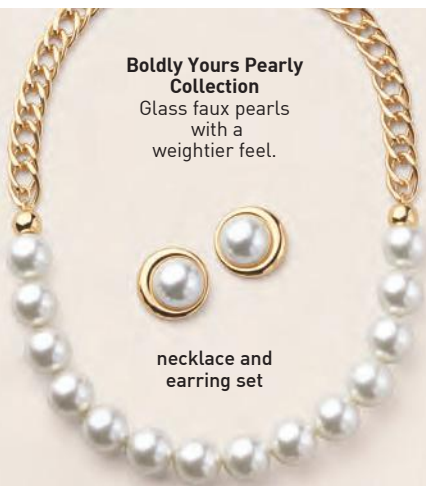
**Pastel Petals Necklace and Earring Set**

Marquise-cut glass stones in clusters of mint green, lilac, blush and champagne tones set in goldtone. 16½" L with 3½" extender. Pendant, 1½" L. Pierced earrings, 1¼" L. 571-070 reg. \$23

**\$17 the set**

**Boldly Yours Pearly Collection**

Glass faux pearls with a weightier feel.



necklace and earring set



clip-on earrings

substantial glass faux pearls

**Ring**  
3/4" W.

6 223-546  
8 223-584  
10 223-599  
reg. \$13

**\$10**

**Bracelet**

Stretches to fit most.  
**223-489**  
reg. \$23  
**\$17**

**Necklace and Earring Set**

18 1/2" L with 3 1/2" extender. Lobster closure. Pierced studs, 3/4" L. **223-474** reg. \$40  
**\$30 the set**

**Clip-On Earrings**

3/4" L. **223-508**  
reg. \$13  
**\$10**

**Heartlink Collection**

Three layers. Goldtone and pearly beads.



**Layered Necklace**

Shortest layer, 16 1/2" L; longest layer, 18 1/2" L with 3 1/2" extender.  
**226-511**  
reg. \$25  
**\$20**



set of 5 pairs



**Band Ring**

Approx. 1/4" W. **6 226-602**  
8 226-602  
10 226-640  
reg. \$13  
**\$10**

**Earring Pack**

Five pairs. Largest, 1/2" L. Pierced. **226-583**  
reg. \$23  
**\$17 the pack**

**Layered Bracelet**

7 1/4" L with 1" extender. **226-579**  
reg. \$23  
**\$17**

necklace set



**Mom and Me—One for You, One for Me Collection**  
Goldtone sets.

**Necklace Set**  
With "Mom" and "Mini" pendants. 16 1/2" L with 3 1/2" extender. Each pendant, 1" W. Lobster closure. **223-603** reg. \$17

**\$13 the set**

**Bracelet Set**  
With two half-sun charms that form a complete sun. Mother-of-pearl inlay. 7 1/4" L with 1" extender. Charm, 1" W. Lobster closure. **223-618** reg. \$14

**\$11 the set**

bracelet set:  
charms form a complete sun



**Bloom and Bond Statement Collection**  
Bold goldtone designs.

**Necklace**  
16½" L with 3½" extender.  
Approx. ½" W. **226-674**  
reg. \$25  
**\$20**



**Ring**  
Approx. 1" W.  
6 **226-712** 8 **226-727** 10 **226-731**  
reg. \$13  
**\$10**

**Earrings**  
Approx. 1¾" L.  
Pierced. **226-708**  
reg. \$20  
**\$15**



**Petal Treasures Shaky Necklace**  
Rose goldtone. Contents of pendant move.  
16½" L with 3½" extender. Pendant,  
approx. 1" L. **226-750** reg. \$20  
**\$15**



**Darling Heart Initial Necklace**  
Pink enamel with goldtone and pearly accents.  
16½" L with 3½" extender.  
Pendant, approx. 1" L. reg. \$13  
**\$10 each**

		
A	B	C
<b>223-660</b>	<b>223-675</b>	<b>223-680</b>
		
D	E	G
<b>223-694</b>	<b>223-728</b>	<b>223-790</b>
		
J	K	L
<b>223-823</b>	<b>223-857</b>	<b>223-861</b>
		
M	N	O
<b>223-880</b>	<b>223-900</b>	<b>223-948</b>
		
P	R	S
<b>225-974</b>	<b>226-158</b>	<b>226-196</b>
		
T	V	
<b>226-488</b>	<b>226-469</b>	



**Hello Kitty® Purrfect Time Watch**  
Blush leatherlike strap, 9½" L with buckle closure. Case, 26mm diam. **223-622** reg. \$43  
**\$33**

**Hello Kitty® Playtime LCD Watch**  
Digital watch with date and light-up function. Floral strap, 9½" L with buckle closure. Case, 24mm diam. **223-637** reg. \$40  
**\$30**

# dad's true blue!

Modern stainless steel designs with semi-precious lapis stone will make his day extra special.

## STAINLESS STEEL

### Men's Stainless Steel Blue Titan Collection

Crafted with durable stainless steel.

#### Lapis Ring

Semi-precious lapis stone inlay. Approx. 1/2" W.

9 736-653 12 736-759

10 736-687 13 736-763

11 736-744

reg. \$25

**\$20**



#### Lapis Cufflinks

Semi-precious lapis stone inlay. 3/4" L.

736-979

reg. \$45

**\$35 the pair**

semi-precious  
lapis stone



#### Lapis Necklace

Semi-precious lapis stone inlay. 22" L.

Pendant, 1 1/2" L.

736-649

reg. \$30

**\$23**



#### Watch

Silvertone with a bold navy dial and octagonal bezel. 8 1/2" L. Case, 41mm x 52mm. Water-resistant to 3 ATM. Quartz movement. 736-620

reg. \$46

**\$36**

## GREAT GIFTS FOR DAD



Father's Day is June 21<sup>st</sup>

### ❖ Men's Polo Shirt

Classic polo shirt with short sleeves and two-button placket. Features rib trim on sleeves and collar. 100% cotton. Center back length: 29" on M; 32" on XXL. Machine wash and dry. Imported. reg. \$33

**\$25 each**

White:	Blue:
S 625-723	S 629-680
M 625-780	M 705-272
L 625-795	L 708-214
XL 629-528	XL 736-562
XXL 736-581	XXL 736-615

# red, white & beautiful

An iconic color combo that captures the spirit of the season.

necklace and earring set

**Ring**  
¾" W.  
6 065-757  
8 065-848  
10 067-654  
reg. \$9  
**\$7**



**American Beauty Gem Collection**  
A trio of red pear-, clear square- and blue oval-shaped glass stones set in goldtone.

**Necklace and Earring Set**  
16½" L with 3½" extender. Pendant, 1¼" L. Lobster closure. Pierced drops, ¾" L. **065-408**  
reg. \$16

**\$12 the set**

set of 2

**Bracelet Set**  
Set of two. Stretches to fit most. **068-301**  
reg. \$17  
**\$13 the set**

set of 2

**Heartland Americana Collection**  
Red, white and blue tube beads with goldtone accents.

**Layered Necklace**  
Set of two. Shortest, 18½" L; longest, 21½" L. **067-840**  
reg. \$25

**\$20 the set**

**Hoop Earrings**  
Approx. 1¼" L. Pierced. **068-589**  
reg. \$13

**\$10**

# striking duos

Double up on gem-like splendor with a fresh and modern, bezel-set design.



**NEW**

**Gem Moments Birthstone Layered Necklace**

Two colored glass stone pendants with a goldtone bezel setting. Shortest layer, 16½" L; longest layer, 18½" L with 3½" extender. Larger pendant, ½" L. Lobster closure.

reg. \$16

**\$12 each**

- |   |   |   |
|---|---|---|
|  |  |  |
| January<br>187-126  | February<br>187-130   | March<br>187-150  |
|  |  |  |
| April<br>187-566  | May<br>188-103  | June<br>188-304   |
|  |  |  |
| July<br>188-820   | August<br>190-061   | September<br>190-410  |
|  |  |  |
| October<br>190-789  | November<br>190-870   | December<br>192-079   |

# Happy Anniversary, AVON!

*Beadazzling for 140 years.*

1961 EVERY BODY DISCOVERS  
LEGENDARY SOFTNESS

**Skin So Soft Original Bath Oil**

48 hours of moisturization. Fresh herbal scent.  
16.9 fl. oz. **\$26 value**

1967 FEEL THE CALL OF THE WILD

**Wild Country Cologne**

Fresh aromatic. Lavender, coriander seed  
and sandalwood. Packaging may vary.  
3 fl. oz. **\$27 value**

1973 LEGENDARY. ICONIC. ALWAYS BEAUTIFUL.

**Avon Classics Sweet Honesty Cologne**

Soft floral. Lily of the valley, rose and cedarwood.  
1.7 fl. oz. **\$20 value**

1988 OVER 40 MILLION SOLD... AND COUNTING\*

**fmg Glimmer Cream Eyeliner  
in Blackest Black**

Long-wearing. Retractable.  
.01 oz. net wt. **\$9 value**

2015 SEE THE POWER:  
BOOST THE BENEFITS OF YOUR MOISTURIZERS

**Anew Power Serum**

See a powerful difference in hydration, smooth  
texture, radiance, firmness and diminished wrinkles.  
1 fl. oz. **\$45 value**

OVER  
**50%**  
OFF!



**5-PIECE SET  
ONLY \$40**

**096-387**

**\$127 VALUE**





BATH OIL  
HUILE DE BAIN  
ORIGINAL



skin  
so soft



NEW  
serum  
optimum

GLIMMER

# scented softness

**Perfumed Skin Softener**  
 Moisturizing formula  
 leaves skin soft and  
 scented. Each, 5 fl. oz.  
 reg. \$7

**\$5**

**\$3.49 each**  
**incredible**  
**value!**

- Avon Classics
- Candid 739-160
- Avon Classics
- Odyssey 739-762
- Imari 220-384
- Haiku 452-419
- Avon Classics
- Timeless 739-155
- Avon Classics
- Sweet Honesty 540-900
- Avon Classics
- Night Magic 738-766
- Far Away 049-246



© 2026 The Avon Company. All rights reserved.

**CAMPAIGN 13, 2026**  
 THE AVON COMPANY  
 165 BROADWAY, NY, NY 10006

**avon.com**

8 88761 76039 1  
 Pk of 10 4803881

8 88761 76041 4  
 Single 4803901

Brochure effective until \_\_\_\_\_



**RETURN POLICY** If you are not satisfied, return any item within 45 days. View Avon's full 45-Day Return Policy at [avon.com/shipping-returns](http://avon.com/shipping-returns).