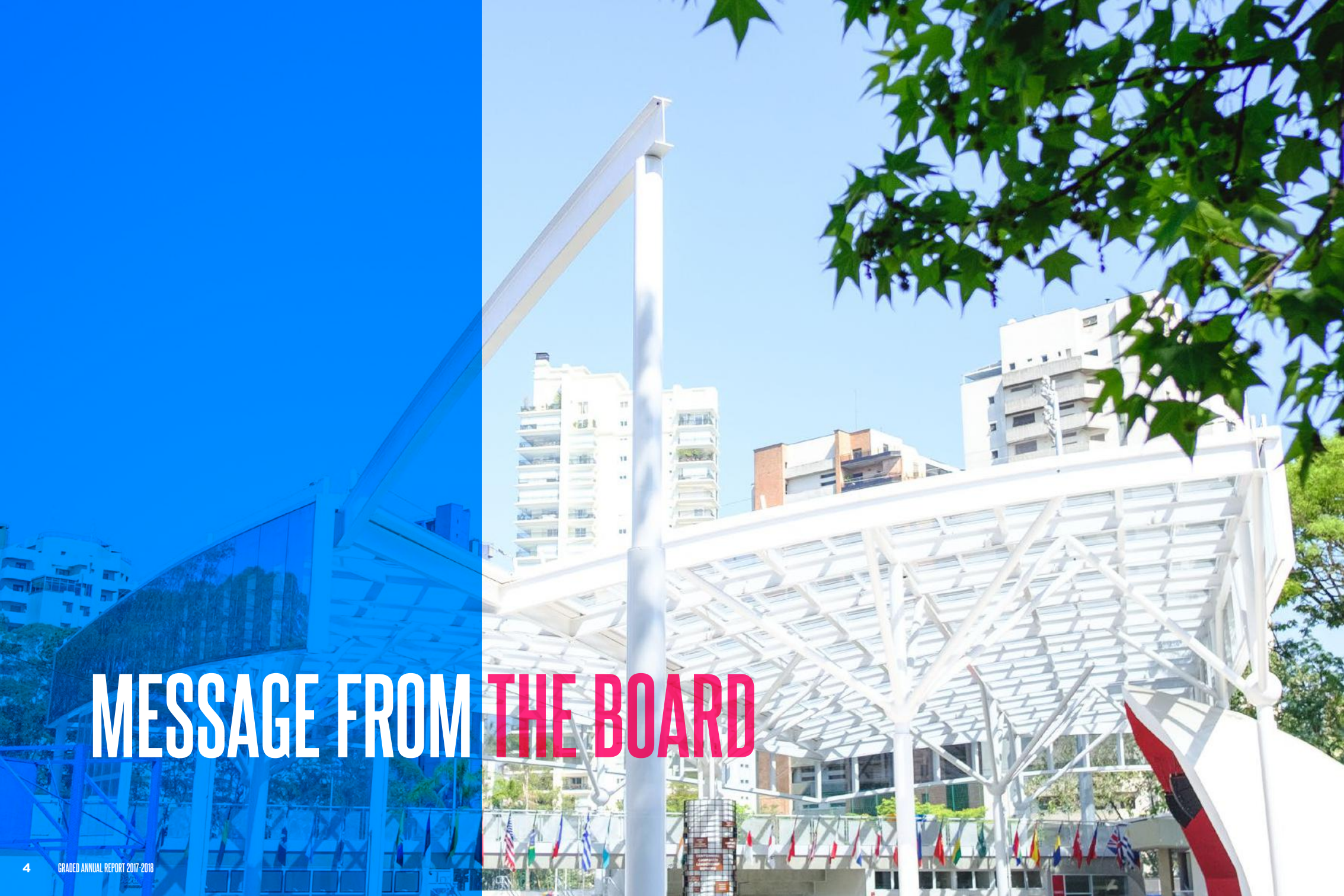




Message from the Board.....	4
Message from the Superintendent.....	6
Board of Directors.....	8
Financials.....	10
Graded at a Glance.....	12
Graded Timeline.....	14
Graded's Four Pillars.....	16
Academics.....	18
Arts.....	20
Athletics.....	22
Service.....	24
College Matriculation.....	26
Giving to Graded.....	28
Centennial Campaign.....	30
Graded Annual Fund.....	34
Giving to Graded Events.....	40
Alumni Highlights.....	41
2017-2018 Leadership Team.....	42

CONTENTS



MESSAGE FROM THE BOARD

MESSAGE FROM THE BOARD

The 2017-18 school year was my first as president of the Board. I assumed the role from Roberto Sallouti '90 who, for eight years, dedicated his time to helping Graded cultivate and perpetuate its reputation as Latin America's leading American school. I would like to thank Roberto personally for his dedication, guidance, and leadership during his years of service.

While Graded maintains its status as a dynamic, top-tier school, Brazil's macroeconomic and political environment remains volatile. We have, nevertheless, been able to stay focused, as we continue to exercise fiscal discipline and implement Graded's long-term strategic plan.

The Board continues to work with the Leadership Team to preserve Graded's identity as a truly international American school. We have been able to remain competitive in the global international education market and recruit and retain the best faculty. At Graded, our learners and educators represent 37 nations. We embrace the school's American values, its culture of openness, and its diversity. Diversity is, of course, not without its challenges. However, we view it as one of Graded's greatest strengths. It teaches all of us, not only our students, important lessons on an almost daily basis.

Over the past few years, Graded has invested in considerable infrastructure improvements. The school was built in 1961, and upgrades and investment in the physical plant have been and continue to be necessary. Throughout it all, however, the Board's main focus has been on EDUCATION. Structural enhancements are essential to Graded's mission and core values, and we

always invest in improvements with a focus on our students and their learning experience.

We live in a fast-changing society. It is human nature to cherish the past, to long for the "good old days," and to fear the unknown. However, experience tells us that we need to prepare for, embrace, and welcome change.

As a school, we need to respond to new ideas and challenges with critical minds, but we also need to be open to ideas that allow us to remain Latin America's premier international school and to maintain a modern and inspiring environment where our students learn, create, experiment, and grow.

In two years, Graded will celebrate its 100th anniversary. We are proud of our past achievements. Thanks to the collaborative spirit of the entire Graded community - students, teachers, staff, families, faculty, and founding companies - we look to the future with enthusiasm and hope, knowing that Graded is prepared to face challenges with a modern campus, a motivated and talented teaching staff, and a tight-knit and supportive community.

It is an honor to serve this exceptional school. I would like to thank you all for your trust and commitment to Graded.

Sincerely,

Luiz Galeazzi '81
President of the Board



MESSAGE FROM THE SUPERINTENDENT



MESSAGE FROM THE SUPERINTENDENT

In 2017-18, Graded continued to thrive. We successfully attracted and retained top faculty, embarked upon the implementation of our Strategic Plan, and improved our facilities – all the while keeping students at the center. Financial solvency is, of course, critical to achieving our pedagogical goals. Your impressive contributions to our Centennial Campaign and Graded Annual Fund enabled Graded to continue our extraordinary work.

In accordance with Graded’s Strategic Plan, the school has elevated professional growth by investing in effective and innovative faculty, staff, and administrators. In October, Graded hosted Innovate 2017, a three-day, groundbreaking conference that brought together educators, as well as students, parents, and trailblazers from other fields. More than 300 attendees from across Latin America discovered new ways to employ innovation in the classroom.

Students played a key role in Innovate 2017. One group of Upper School students provided a learner’s perspective while engaging in “fishbowl” discussion sessions. Simultaneously, another cohort participated in Start Up Stay Up, a 48-hour social entrepreneurship boot camp, during which industry experts served as their mentors.

Graded continued its iterative Strategic Plan work, in an

effort to further advance the institution and provide an exceptional holistic education. During the past year, we established the following priorities:

- Actively engage students in their own learning through assessment and feedback.
- Deliver inspirational instruction that addresses the academic needs of every student.
- Create a shared vision that enhances and sustains a positive school culture reflective of Graded’s values.
- Establish, implement, and monitor a pre-primary through grade 12 character and social-emotional learning program.
- Ensure a welcoming, safe, and supportive environment.

To address each of these objectives, we formed six focus groups. Each group, comprised of faculty and staff across Graded’s three divisions, devised a series of actions to be instituted in support of their assigned goal.

In support of Graded’s educational outcomes, the aim of the school’s multi-year Campus Project is the creation and modernization of learning spaces. Construction of a new Athletics Center, Phase III of the Graded

Campus Project, began in November 2017 and is slated for completion in February 2019. This state-of-the-art facility will include a gymnasium, swimming pool, and three rooftop tennis courts. Graded’s Academic Infrastructure and Modernization Project, Phase IV of the Graded Campus Project, is also well underway, as we update our existing facilities.

My deepest gratitude goes out to you, our donors, for your dedication. Over the past year, Graded community members have inspired me with their remarkable support of our school’s mission. Participation and contributions to the 2017-18 Graded Annual Fund reached record levels, and Centennial Campaign contributions totaled more than R\$12M.

Please take some time to peruse the school’s 2017-2018 Annual Report, which highlights Graded’s achievements, financials, and philanthropic contributions. I look forward to another successful year.

Very best,

Richard Boerner
Superintendent

BOARD OF DIRECTORS

Graded is governed by a self-perpetuating board, whose twelve members are appointed for up to four two-year terms. The Board was first established in 1931 and continues to set the school's fiduciary policies, annual budget, and fundraising goals, based upon input from the superintendent and Leadership Team. The Board stewards the school's financial resources to provide for current needs, while protecting and enhancing the endowment for the benefit of the institution's future. The Board is also responsible for hiring and evaluating the superintendent.

"I joined Graded's Board in 2014, and it has been an inspiring experience to serve the community. Facing challenging times in Brazil, the Board has worked closely with Graded's talented and dedicated Leadership Team to ensure the school's continued success and the preservation of its long-standing culture."

Johann Mathias von Bernuth, Secretary

BOARD OF DIRECTORS



LUIZ GALEAZZI '81
President



PAIGE GEIGER
Vice President



CARLOS HITOSHI F. CASTRO
Treasurer



JOHANN MATHIAS VON BERNUTH
Secretary



ANA CABRAL-GARDNER
Director



FABIO COELHO
Director



BARRY ENGLE
Director



GUSTAVO DINIZ JUNQUEIRA
Director



JEFFREY HOBERMAN
Director



CAROLINE PINHEIRO LIMA
Director



RODOLPHO PROTASIO
Director



RICARDO ZUNIGA
Director



RICHARD BOERNER
Ex Officio

WELCOME

Jeffrey Hoberman

Jeffrey Hoberman is founding CEO of Recovery Brasil. He is currently active with various startups. Jeffrey holds a BA in Economics and Political Science from Yale University and a JD from Harvard Law School.



THANK YOU

Barry Engle

Graded would like to thank Board member Barry Engle for his service to the school. Barry joined the Board at the start of the 2017-18 year. During his time in São Paulo, he served as General Motors' executive vice president and president, South America.



Ricardo Zuniga

Graded would like to thank Ricardo Zuniga for his three years of dedicated service to the school. During his tenure as the United States Consul General in São Paulo, Ricardo was an invaluable resource and friend to Graded.



FINANCIALS



Graded - The American School of São Paulo closed FY17-18 with a positive operating result (EBITDA) of R\$4.67M. This outcome is better than we had projected, due to a favorable US dollar exchange rate and a lower inflation index. Successful contract renegotiation and the Graded Leadership Team's effective cost management and fiscal discipline played key cost-saving roles. Consequently, we closed the year with an operating surplus of R\$5.28M.

In November 2017, Graded broke ground on Phase III of the Graded Campus Project. This R\$42M Athletics Center project includes a new gymnasium, a six-lane swimming pool, and three rooftop tennis courts. We remain on time and on budget with an anticipated completion date of February 2019.

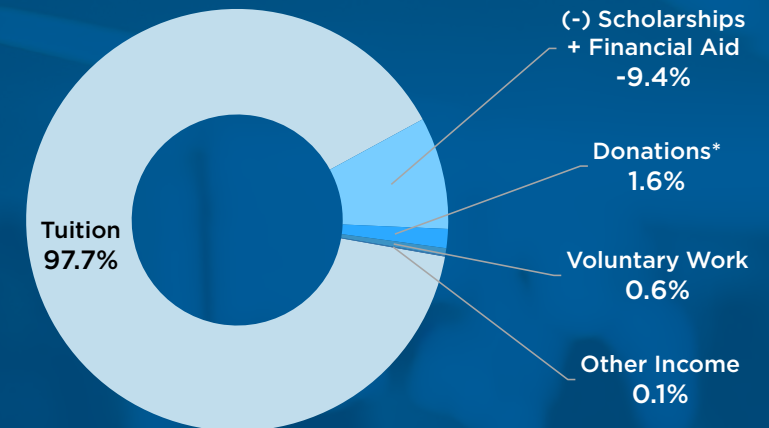
We closed the year with operating reserves of R\$43.92M in cash, which represents 4.41 times monthly income. This amount exceeds the three-month revenue target established by the Board of Directors. Our operating reserves enable Graded to stay competitive in the global international market and to recruit and retain the best educators. Our reserves also allow Graded to balance the diversity of incoming students and remain a truly international American school.

I would like to thank my colleagues, members of the Board and Finance Committee, for their expertise, advice, and support throughout this year.

Best regards,

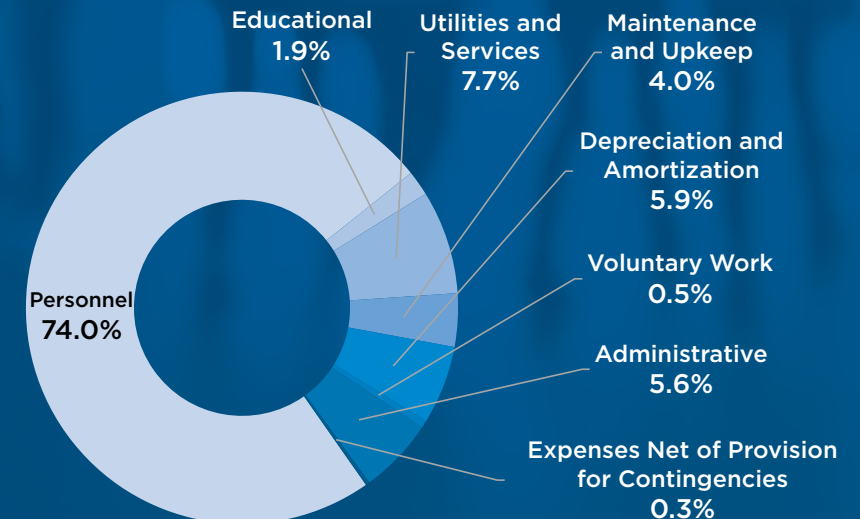
Carlos Hitoshi F. Castro
Treasurer

2017-2018 OPERATING REVENUE



**Donations represent monies spent, as opposed to total amount raised.*

2017-2018 OPERATING COSTS AND EXPENSES



This financial report was prepared and audited by Price Waterhouse Coopers and represents the fiscal year ending June 30, 2018. Graded would like to thank members of the Finance Committee for their expertise, advice, and support throughout the intensive review process. Members included: Carlos Hitoshi F. Castro, Fabio Coelho, Barry Engle, Luiz Galeazzi '81, and Gustavo Diniz Junqueira. Ex Officio members: Superintendent Richard Boerner and Director of Business and Operations Elaine Gabor.

FINANCIAL STATEMENT June 30 (reals in thousands)	2017-2018	2016-2017
Operating Revenue		
Tuition	120,735.00	110,654.00
(-) Scholarships (Staff and Partial Merit-based)	(10,649.00)	(9,288.00)
Donations*	1,800.00	1,905.00
Voluntary Work	628.00	674.00
Other Income	145.00	222.00
Net Operating Revenue	112,659.00	104,167.00
Operating Costs		
Personnel	(75,392.00)	(69,764.00)
Educational	(2,164.00)	(2,165.00)
Utilities and Services	(8,888.00)	(6,966.00)
Maintenance and Upkeep	(4,579.00)	(3,419.00)
Depreciation and Amortization	(6,610.00)	(4,803.00)
Voluntary Work	(628.00)	(674.00)
Total Operating Costs	(98,261.00)	(87,791.00)
Gross Surplus	14,398.00	16,376.00
Operating Expenses		
Personnel	(9,510.00)	(9,244.00)
Administrative	(6,469.00)	(6,349.00)
Taxes	(5.00)	(12.00)
Expenses Net of Provision for Contingencies	(346.00)	1,110.00
Depreciation and Amortization	(135.00)	(99.00)
Total Operating Expenses	(16,465.00)	(14,594.00)
Other Operating Income and Expenses		
Admissions Fee	470.88	1,110.72
Capital Fund Donations	5,373.12	3,340.28
Gain/Loss on Sales of Fixed Assets	(3.00)	11.00
Other Income and Expenses	-	-
Total Other Operating Income and Expenses	5,841.00	4,462.00
Financial Income and Expenses		
Income	5,632.00	8,769.00
Expenses	(4,126.00)	(4,087.00)
Total Financial Income and Expenses Net	1,506.00	4,682.00
Surplus/Deficit	5,280.00	10,926.00

*Donations represent monies spent, as opposed to total amount raised.

GRADED AT A GLANCE



MISSION

**inspire
challenge
succeed**

every student
every heart
every mind

CORE VALUES

- Intellectual Curiosity
- Perseverance
- Respect
- Integrity
- Kindness

NONPROFIT,

independent,
coeducational,
nonsectarian school

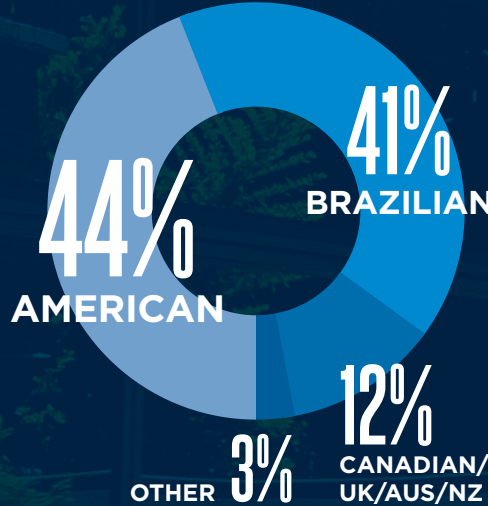
AMERICAN CURRICULUM PRE-PRIMARY-GRADE 12

GRADES 1-12
**AMERICAN DIPLOMA
BRAZILIAN DIPLOMA**

GRADES 11-12
**INTERNATIONAL
BACCALAUREATE**
SINCE 1985

PRE-PRIMARY
MONTESSORI
SINCE 1979

FACULTY



71% HAVE
ADVANCED
DEGREES
(MASTER'S AND/OR
DOCTORATE)



**STUDENT/TEACHER
RATIO**

STUDENTS

1246
STUDENTS

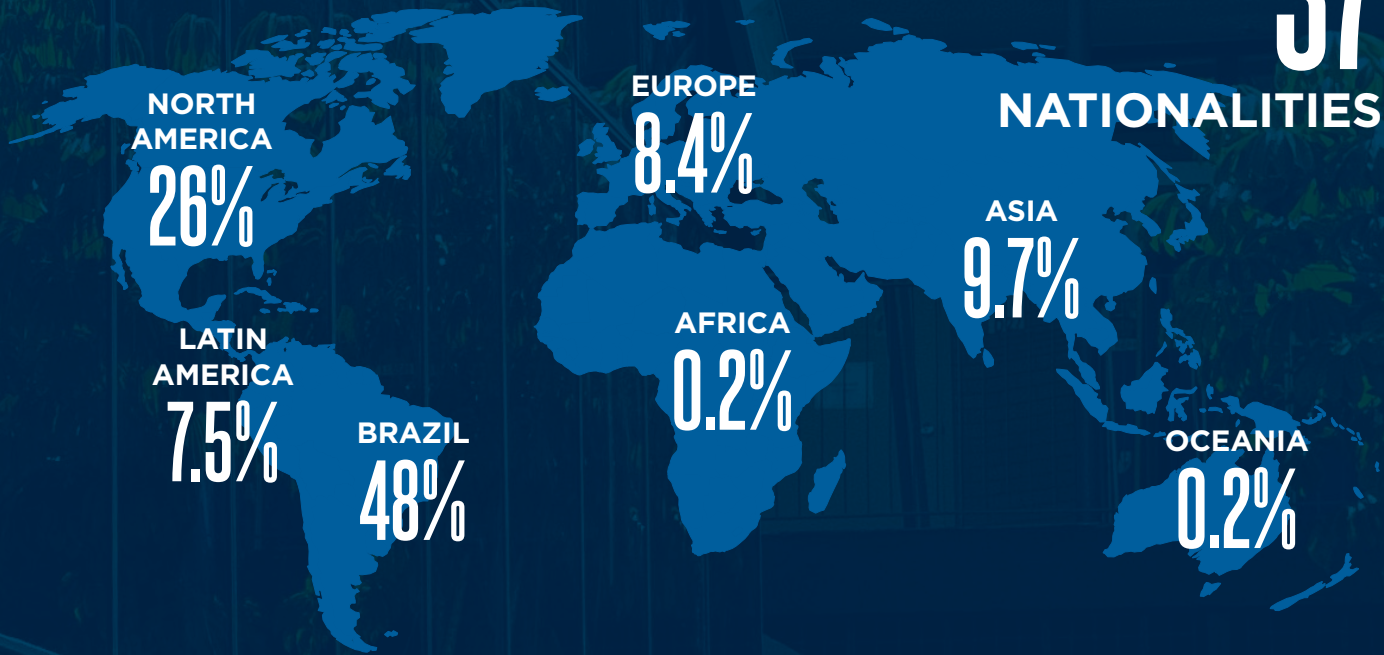
HIGH SCHOOL
417

MIDDLE SCHOOL
283

LOWER SCHOOL
546

37

NATIONALITIES



DIPLOMAS
CLASS OF 2018

76%
IB

65%
BRAZILIAN

100%
AMERICAN



COLLEGE
MATRICULATION
PAST 5 YEARS

6.4% BRAZIL

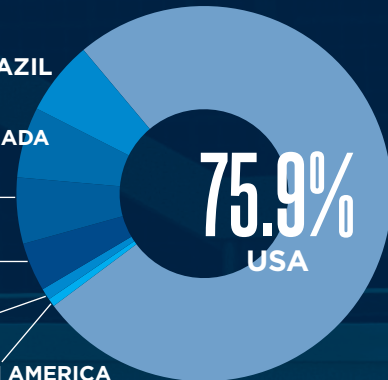
6.1% CANADA

5.7% UK

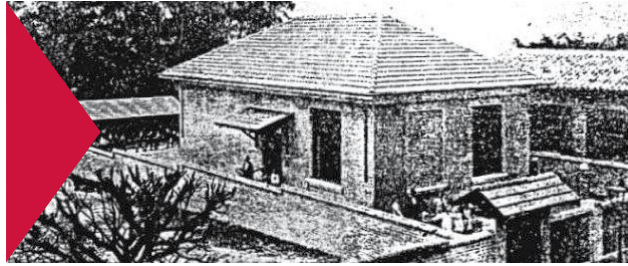
4.2% EU

1.0% ASIA

0.7% LATIN AMERICA



GRADED TIMELINE



1920

The American Chamber of Commerce and American companies in São Paulo envisioned a school that would prepare children for college in the United States. On October 17, Mrs. Ruth Kolb and Ms. Bel Ribble took attendance of six students in a two-room schoolhouse on Avenida São João.

1921

In 1921, enrollment increased to 35 and the school was officially established as the São Paulo Graded School.

1928

A larger building was quickly constructed with Chamber of Commerce funds on Mackenzie College land on Rua Piauí 36.

ARCHITECTURAL RENDERINGS



2018

Plans were unveiled for a new Upper School Library, Upper School Innovation Center, and two Lower School Innovation Hubs.

2017 ←

The Graded Campus Project - Phase III (new athletics center) and Phase IV (Academic Infrastructure Modernization Project) began.



2016 ←

The Graded Campus Project - Phase II was completed, including athletics fields, a student center, parking garage, wellness gymnasium, beach volleyball court, and track.



2014 ←

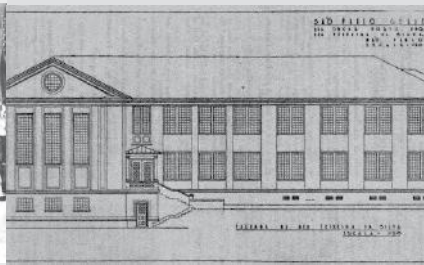
The Graded Campus Project - Phase I was inaugurated with renovated Lower School gymnasiums and playgrounds.





1930

.....→ An additional site for elementary students was built on Rua Itambé.



1938

.....→ As demand increased, the American Chamber began a campaign to construct a larger building. Head of School Maurice Vernon "Tio" Powell moved the school close to Avenida Paulista.



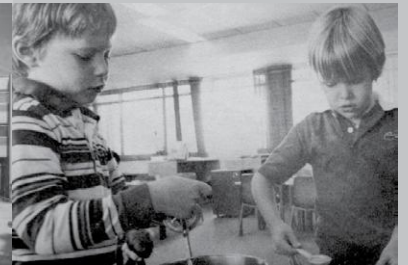
1961

.....→ The Brazilian industrial boom of the 1950s created the need for an even bigger school. In August 1961, after a large fundraising campaign, Graded moved to the "country" on Avenida Giovanni Gronchi.



1977

.....→ The Lower School campus was inaugurated.



1979

.....→ Joyce Pickering implemented the Montessori Program on the newly built Lower School campus.

2011

←..... Giving to Graded was launched to raise funds for long-term projects. It was later renamed the Centennial Campaign.

2004

←..... The Lemann-Tully Arts Center was completed. Facilities included a black box theater, photography darkroom, dance studio, and music rooms.

1991

←..... Graded purchased Apple II-GS computers. With the help of Universidade de São Paulo (USP), the internet arrived on campus three years later.

1988

←..... International Baccalaureate (IB) courses were introduced in 1985. Un Kyung Park earned Graded's first IB Diploma three years later.

1980s

←..... The Big Four Tournament began. Graded, Escola Americana de Brasília, Escola Americana do Rio de Janeiro, and Chapel still compete every year.



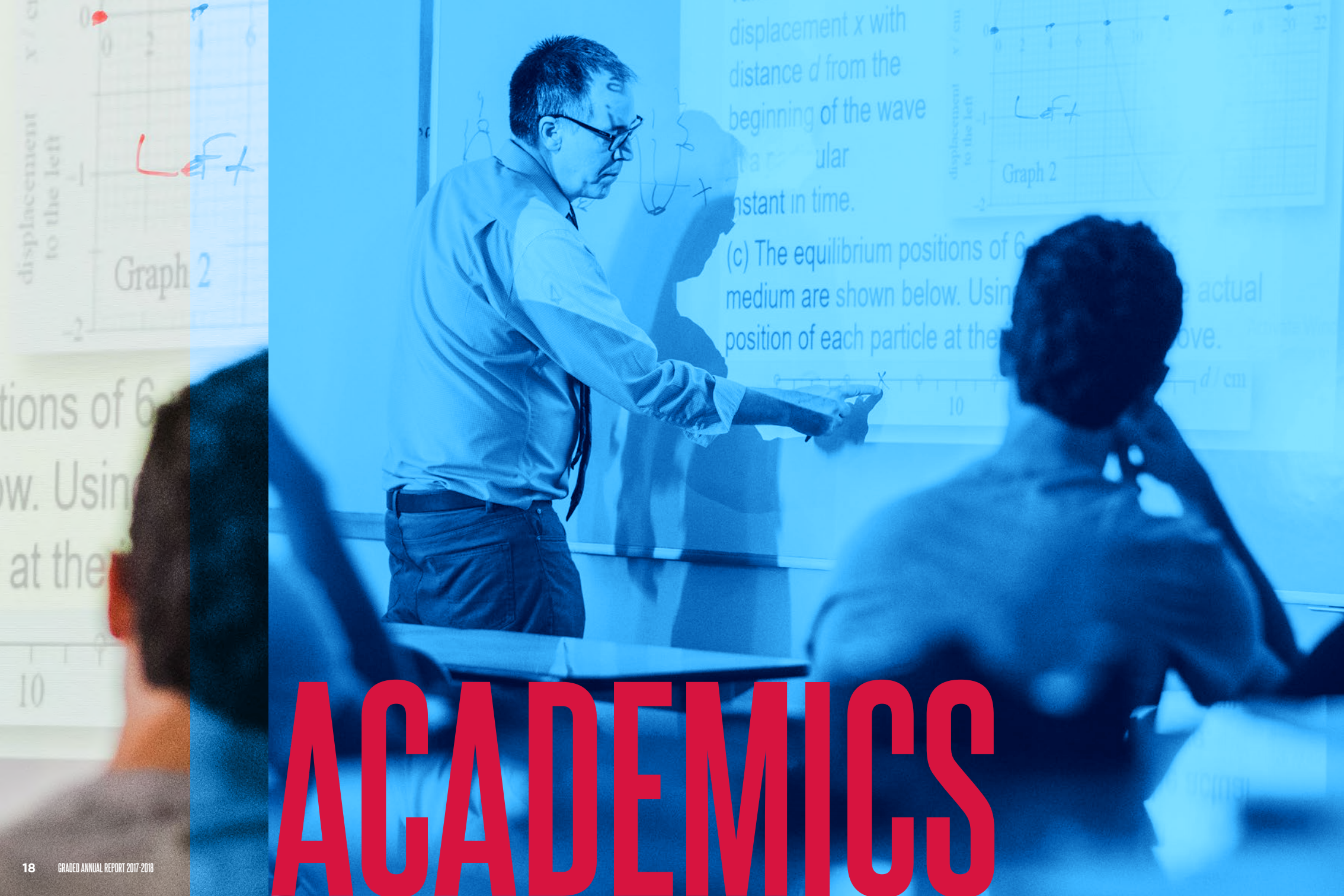
GRADED'S

FOUR

PILLARS



AT GRADED, WE EMPOWER STUDENTS TO REACH THEIR POTENTIAL. FOUR PILLARS – ACADEMICS, ARTS, ATHLETICS, AND SERVICE – SERVE AS OUR FOUNDATIONAL FRAMEWORK. GRADED PROVIDES MORE THAN JUST ACADEMIC RIGOR. OUR FOUR PILLARS UPHOLD GRADED'S CORE VALUES OF INTELLECTUAL CURIOSITY, PERSEVERANCE, RESPECT, INTEGRITY, AND KINDNESS.



ACADEMICS



Every day at Graded, we empower students to discover, question, collaborate, and innovate. From Pre-primary through grade 12, Graded learners thrive in a student-centered environment, which emphasizes engagement, experiential learning, and reflection. Our inspirational faculty members address the academic needs of each child by providing thoughtful and ongoing feedback.

Graded provides passionate learners with endless opportunities. In 2017-18, the High School Poetry Recitation showcased the work of our English students. Graded's Robotics Fair and Middle School STEAM (Science, Technology, Engineering, Art, and Mathematics) Day celebrated student inquiry, teamwork, and critical thinking. Newbery Award-winning author Linda Sue Park spent a week on campus engaging with students. At the Biography Museum, Lower School students journeyed back in time, where they met third graders portraying historical figures. On our Classroom Without Walls (CWW) trips, students participated in hands-on learning experiences that exposed them to Brazilian culture, history, and geography.

"I HAVE FOND MEMORIES OF MY TIME AT GRADED... ONE TEACHER IN PARTICULAR, IAIN RICHARDSON, WAS KEY TO INTERESTING ME IN UNDERSTANDING THE PHILOSOPHICAL AND LITERARY UNDERPINNING TO WESTERN CIVILIZATION. HE LITERALLY OPENED MY MIND."
 WILLIAM A. FRANKE '55 • FOUNDER AND MANAGING PARTNER OF INDIGO PARTNERS • CHAIRMAN OF WIZZ AIR • CHAIRMAN OF FRONTIER AIRLINES • FORMER CHAIRMAN OF CIRCLE K, AMERICA WEST AIRLINES, TIGER AIRWAYS, AND SPIRIT AIRLINES



ARTS

“GRADED AND ITS OUTSTANDING ART DEPARTMENT PLAYED A SIGNIFICANT ROLE IN HELPING ME DEVELOP MY PASSION FOR MUSICAL THEATER, AND ULTIMATELY, IN MY DECISION TO PURSUE MY CAREER AS AN ACTRESS.”

ROBERTA JAFET '10 • ACTRESS • SINGER



The arts broaden perspective, promote critical thinking, and cultivate risk-taking.

At Graded, we offer an abundance of visual and performing arts courses. The 7900-square-meter Lemann-Tully Arts Center is a real showstopper, boasting multiple spaces including a black box theater, ceramics studio, photography lab, and dance studio.

In 2017-18, Graded students showcased their artistic talents during concerts, exhibitions, and performances. Thespians delighted audiences in productions, such as *Into the Woods*, *Phantom Tollbooth Jr.*, *Seedfolks*, and *Under Construction*. Visual artists displayed their work at exhibitions, including the K-12 Art Show, IB Senior Art Exhibition, and the Graded Film Festival. Singers entertained at choir recitals, and musicians performed during band, jazz band, and orchestra concerts. Graded musicians also performed on a global stage in the United States, Singapore, and Berlin.



ATHLETICS



At Graded, we believe athletics play a pivotal role in preparing our students for the future. Beyond promoting physical and emotional well-being, sports instill confidence, build gamesmanship, and nurture self-discipline.

In November 2017, Graded broke ground on a new athletics center, which will transform our sports and wellness offerings into a world-class program. The new facility, scheduled for completion in February 2019, will include a multi-court gymnasium, a semi-Olympic swimming pool, and three rooftop tennis courts.

Students in grades 1 through 12 have the opportunity to participate in a variety of sports. In 2017-18, Graded Eagles captured the São Paulo High School League (SPHSL) championships in varsity girls soccer, varsity boys volleyball, and varsity girls volleyball. They also hailed as Big Four varsity boys futsal and varsity girls volleyball champions.

“ATHLETICS HAS PLAYED A SIGNIFICANT ROLE IN MY LIFE. SPORTS DEVELOP DISCIPLINE, TEAMWORK, AND RISK-TAKING. THEY TEACH YOU HOW TO LOSE AND LEARN FROM IT.”

JORGE PAULO LEMANN • GRADED GRANDPARENT • ALUMNI PARENT • ENTREPRENEUR • INVESTOR • CHAIRMAN OF FUNDAÇÃO LEMANN • FIVE-TIME BRAZILIAN NATIONAL TENNIS CHAMPION





SERVICE



“BELIEVE YOU CAN MAKE A DIFFERENCE. BELIEVE THAT THE MOST IMPORTANT THING IN LIFE IS TO HAVE PURPOSE AND A PROJECT. PEOPLE WHO DO NOT HAVE PURPOSE, A PROJECT, DO NOT HAVE A FUTURE.”

ROBERTO KLABIN • GRADED PARENT AND GRANDPARENT • CO-FOUNDER AND VICE PRESIDENT OF FUNDAÇÃO SOS MATA ATLÂNTICA • FOUNDER AND OWNER OF CAIMAN ECOLOGICAL RESERVE



The academic, social, and emotional benefits of service learning are immeasurable. By giving back to their communities, students become more aware and responsible members of society. Graded's well-established Community Service Program strives to develop more thoughtful, compassionate, and engaged global citizens.

In 2017-18, Lower School community service activities included a grade 1 walk-a-thon project in support of Fundação Dorina Nowill, an organization dedicated to the social inclusion of people with visual impairments. Middle School students made weekly trips to Cáritas, an after-school care center for underprivileged children. On Saturdays, at Friendship and Language Acquisition (FALA), High School students taught English to members of the surrounding community.

Graded's Run Against Cancer brought together the entire school community to raise funds in support of Casa Maria Helena Paulina, a non-governmental organization that provides housing for children who come to São Paulo for cancer treatment with their caretakers.





COLLEGE MATRICULATION

CLASSES 2014-2018 COLLEGE MATRICULATION

Between 2014 and 2018, at least one Graded graduate matriculated at each of the following institutions. Emboldened text identifies those institutions at which at least one 2018 Graded alumna/us enrolled. Please note: Acceptance to some Brazilian universities occurs only in January of the following year, thus the list of Brazilian acceptances may not be complete.

UNITED STATES

AMERICAN UNIVERSITY
ARIZONA STATE UNIVERSITY
ARTCENTER COLLEGE OF DESIGN
BABSON COLLEGE
BALDWIN WALLACE UNIVERSITY
BARNARD COLLEGE
BARUCH COLLEGE OF THE CUNY
BATES COLLEGE
BENTLEY UNIVERSITY
BERKLEE COLLEGE OF MUSIC
BOSTON COLLEGE
BOSTON UNIVERSITY
BOWDOIN COLLEGE
BRANDEIS UNIVERSITY
BRIGHAM YOUNG UNIVERSITY
BROWN UNIVERSITY
BUCKNELL UNIVERSITY
CENTRAL MICHIGAN UNIVERSITY
CHAPMAN UNIVERSITY
CLAREMONT MCKENNA COLLEGE
COLLEGE OF CHARLESTON
COLORADO STATE UNIVERSITY
COLUMBIA UNIVERSITY
CORNELL UNIVERSITY
DARTMOUTH COLLEGE
DENISON UNIVERSITY
DUKE UNIVERSITY
EMBRY-RIDDLE AERONAUTICAL UNIVERSITY
EMERSON COLLEGE
EMORY UNIVERSITY
FASHION INSTITUTE OF TECHNOLOGY
FLAGLER COLLEGE
FORDHAM UNIVERSITY
GEORGETOWN UNIVERSITY
GEORGIA INSTITUTE OF TECHNOLOGY
GRINNELL COLLEGE
HAMPSHIRE COLLEGE
HARVARD UNIVERSITY
HARVEY MUDD COLLEGE
HAVERFORD COLLEGE
HOFSTRA UNIVERSITY
INDIANA UNIVERSITY AT BLOOMINGTON
JOHNS HOPKINS UNIVERSITY
KALAMAZOO COLLEGE
LIM COLLEGE (LABORATORY INSTITUTE OF MERCHANDISING)

LOYOLA MARYMOUNT UNIVERSITY
LYNN UNIVERSITY
MANHATTAN COLLEGE
MANHATTAN SCHOOL OF MUSIC
MANHATTANVILLE COLLEGE
MASSACHUSETTS INSTITUTE OF TECHNOLOGY
MICHIGAN STATE UNIVERSITY
MIDDLEBURY COLLEGE
NEW YORK INSTITUTE OF TECHNOLOGY
NEW YORK UNIVERSITY
NORTH IDAHO COLLEGE
NORTHEASTERN UNIVERSITY
NORTHWESTERN UNIVERSITY
OBERLIN COLLEGE
OCCIDENTAL COLLEGE
PENNSYLVANIA STATE UNIVERSITY
PEPPERDINE UNIVERSITY
POMONA COLLEGE
PORTLAND STATE UNIVERSITY
PRATT INSTITUTE
PRINCETON UNIVERSITY
PURDUE UNIVERSITY
RENSSELAER POLYTECHNIC INSTITUTE
RINGLING COLLEGE OF ART AND DESIGN
ROLLINS COLLEGE
RUTGERS UNIVERSITY-NEW BRUNSWICK
SANTA CLARA UNIVERSITY
SARAH LAWRENCE COLLEGE
SAVANNAH COLLEGE OF ART AND DESIGN
SCHOOL OF THE ART INSTITUTE OF CHICAGO
SETON HALL UNIVERSITY
SKIDMORE COLLEGE
STANFORD UNIVERSITY
SUFFOLK UNIVERSITY
SWARTHMORE COLLEGE
SYRACUSE UNIVERSITY
THE GEORGE WASHINGTON UNIVERSITY
THE NEW SCHOOL - ALL DIVISIONS
THE UNIVERSITY OF ARIZONA
TRINITY UNIVERSITY
TUFTS UNIVERSITY
UNITED STATES MILITARY ACADEMY (WEST POINT)
UNIVERSITY OF ARKANSAS
UNIVERSITY OF CALIFORNIA, BERKELEY
UNIVERSITY OF CALIFORNIA, IRVINE
UNIVERSITY OF CALIFORNIA, LOS ANGELES
UNIVERSITY OF CALIFORNIA, SAN DIEGO

UNIVERSITY OF CHICAGO
UNIVERSITY OF COLORADO AT BOULDER
UNIVERSITY OF FLORIDA
UNIVERSITY OF KANSAS
UNIVERSITY OF MIAMI
UNIVERSITY OF MICHIGAN
UNIVERSITY OF NOTRE DAME
UNIVERSITY OF PENNSYLVANIA
UNIVERSITY OF PITTSBURGH
UNIVERSITY OF PUGET SOUND
UNIVERSITY OF ROCHESTER
UNIVERSITY OF SAN FRANCISCO
UNIVERSITY OF SOUTHERN CALIFORNIA
UNIVERSITY OF VERMONT
UNIVERSITY OF VIRGINIA
UTAH STATE UNIVERSITY
VIRGINIA COMMONWEALTH UNIVERSITY
WAKE FOREST UNIVERSITY
WELLESLEY COLLEGE
WESTERN STATE COLORADO UNIVERSITY
WHEATON COLLEGE (MA)
WORCESTER POLYTECHNIC INSTITUTE
XAVIER UNIVERSITY
YALE UNIVERSITY

BRAZIL

ESPM (ESCOLA SUPERIOR DE PROPAGANDA E MARKETING)
FAAP (FUNDAÇÃO ARMANDO ALVARES PENTEADO)
FUNDAÇÃO GETÚLIO VARGAS
IBMEC SÃO PAULO
MACKENZIE (UNIVERSIDADE PRESBITERIANA MACKENZIE)
PUC (PONTIFÍCIA UNIVERSIDADE CATÓLICA)

CANADA

CONCORDIA UNIVERSITY - MONTREAL
MCGILL UNIVERSITY
MOUNT SAINT VINCENT UNIVERSITY
UNIVERSITY OF BRITISH COLUMBIA
UNIVERSITY OF OTTAWA
UNIVERSITY OF TORONTO

EUROPE (EU)

ECOLE HOTELIERE DE LAUSANNE
ERASMUS UNIVERSITEIT ROTTERDAM
FRANKLIN UNIVERSITY SWITZERLAND

IE UNIVERSITY - MADRID CAMPUS
MONDRAGON UNIBERTSITATEA
PARIS-SORBONNE UNIVERSITY
THE AMERICAN UNIVERSITY OF PARIS
UNIVERSITA BOCCONI
UNIVERSITY COLLEGE UTRECHT
WEBSTER UNIVERSITY LEIDEN

UNITED KINGDOM

BRUNEL UNIVERSITY LONDON
HULT INTERNATIONAL BUSINESS SCHOOL - LONDON
KING'S COLLEGE LONDON
LANCASTER UNIVERSITY
LONDON SCHOOL OF ECONOMICS AND POLITICAL SCIENCE
LOUGHBOROUGH UNIVERSITY
NEWCASTLE UNIVERSITY
REGENT'S UNIVERSITY LONDON
ROYAL COLLEGE OF MUSIC
ROYAL HOLLOWAY, UNIVERSITY OF LONDON
SWANSEA UNIVERSITY
UNIVERSITY COLLEGE LONDON
UNIVERSITY OF BIRMINGHAM
UNIVERSITY OF CAMBRIDGE
UNIVERSITY OF GLASGOW
UNIVERSITY OF ST ANDREWS
UNIVERSITY OF THE ARTS LONDON

ARGENTINA

UNIVERSIDAD DEL CEMA
UNIVERSIDAD TORCUATO DI TELLA

MEXICO

TECNOLÓGICO DE MONTERREY, CAMPUS QUERÉTARO

SOUTH KOREA

GHENT UNIVERSITY GLOBAL CAMPUS
HANYANG UNIVERSITY
SUNY KOREA
YONSEI UNIVERSITY - UNDERWOOD

UNITED ARAB EMIRATES

NEW YORK UNIVERSITY ABU DHABI

GIVING TO GRADED



THERE ARE TWO WAYS TO SUPPORT GRADED FINANCIALLY

THE CENTENNIAL CAMPAIGN

Since 1920, Graded has been recognized as an educational leader, dedicated to inspiring excellence, fostering intercultural competence, and empowering students to become engaged, ethical citizens. In anticipation of its 100th anniversary, Graded launched the Centennial Campaign, an ambitious initiative to raise funds for three strategic priorities: The Graded Campus Project, the Graded Scholar Program Endowment, and the Excellence in Teaching Endowment.

GRADED ANNUAL FUND

The Graded Annual Fund, the school's annual giving program, is the primary vehicle for raising unrestricted funds to supplement the school's operating budget. Like most American colleges and leading independent schools, Graded relies upon philanthropic contributions to fulfill its mission. The Graded Annual Fund supports educational enrichment, professional development, scholarships, arts, athletics, community service, and campus enhancements. We encourage all members of the Graded community to participate in this important effort.

Members of the Graded community demonstrate their belief in the school's mission in myriad ways. Alumni enthusiastically tout the benefits of their alma mater. Board members generously volunteer their time to govern and guide the institution. PTA members devote countless hours to honor faculty and better the community.

Philanthropy is another measure of confidence in an institution. Nonprofit organizations, such as Graded, look to giving as a key metric of community satisfaction. Since its advent, Graded has been the beneficiary of charitable contributions. What has changed recently, however, is that giving has become part of the school's fabric.

Over my two years at Graded, I have posed the same question to donors:

"Why do you give?"

My question has elicited varied responses. Some donors give because they want their children or grandchildren to have access to the very best education. Others contribute because they, themselves, were scholarship recipients and feel a calling to give back. Still, others say they are interested in investing in Brazil's future leaders.

"We give because we can," one donor humbly replied. "Because we know it's the right thing to do."

Such reasoning represents a huge paradigm shift in a country in which educational philanthropy is still maturing. It is also illustrative of the culture of giving we have cultivated at Graded.

Consider the school's increased philanthropic engagement from 2016 to 2018:

- Leadership Donor households have grown from 45 to 80.
- Graded Annual Fund parent participation has tripled.
- Graded Annual Fund faculty participation has increased from 9% to 48%.

Students, too, are giving back. Fourth graders raised more than R\$5000 for the Graded Scholar Program. High School students led a "Fund Razor." Fifty-seven students made individual contributions, including a first grader who donated his pocket money.

As Graded approaches its centennial, I am heartened by the institution it has become. There is much reason for optimism. Leadership is strong; governance is able; and stakeholders – students, parents, alumni, grandparents, faculty, staff, administrators, board members, and founding companies – are galvanized.

Thank you to all of our community members who have donated their time and money and made Graded's mission their own.

With gratitude,

Susan Clain
Chief Advancement Officer



CAMPAIGN

GRADED CAMPUS PROJECT

A multi-year project of construction, modernization, and renewal that is transforming the Graded campus by investing in infrastructure and the school's future.

Total Committed:
R\$32,085,924 as of June 30, 2018

GRADED SCHOLAR PROGRAM ENDOWMENT

Through this endowed program, Graded offers life-changing, full scholarships to economically disadvantaged, exceptionally gifted Brazilian students.

Total Endowment:
R\$15,894,285.27 as of June 30, 2018

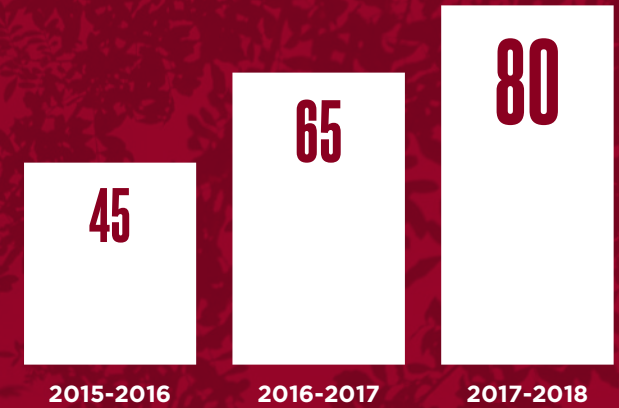
EXCELLENCE IN TEACHING ENDOWMENT

This endowed fund ensures that Graded is able to recruit, retain, and develop the world's best teachers for many years to come.

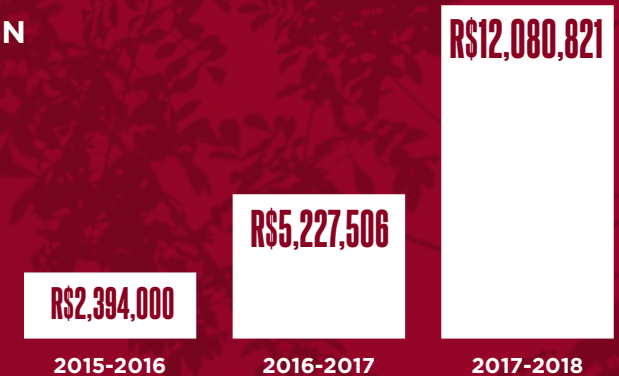
Total Endowment:
R\$6,357,779.39 as of June 30, 2018

NUMBER OF LEADERSHIP DONORS

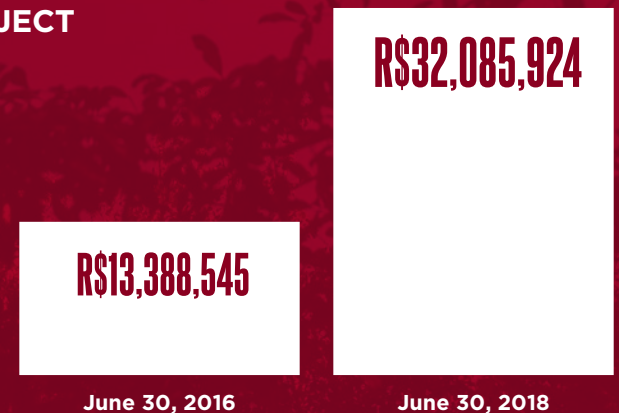
Leadership Donors are those who contribute at a level of R\$150,000+ and are recognized on Graded's Donor Pillar.



CENTENNIAL CAMPAIGN TOTAL CASH RAISED



GRADED CAMPUS PROJECT TOTAL COMMITTED



CENTENNIAL CAMPAIGN DONORS

LEADERSHIP DONOR CIRCLE

Leadership Donors are those who contribute at a level of R\$150,000+ and are recognized on Graded's Donor Pillar. Graded extends its deepest gratitude to our Leadership Donors whose gifts are an investment in both the future of our institution and the success of every student.

R\$10,000,000+

FUNDAÇÃO LEMANN

R\$3,000,000 – R\$9,999,999

JULIANA AND ROBERTO '90 SALLOUTI

R\$1,500,000 – R\$2,999,999

ANONYMOUS (2)

THE GARFINKEL FAMILY

ALESSANDRA AND EZRA SAFRA

R\$500,000 – R\$1,499,999

ANONYMOUS (4)

THE BLAY FAMILY

THE GALEAZZI FAMILY

MARIA ANGELA AND ROBERTO KLABIN

RAQUEL MOURA BORGES

CLAUDIA AND RENATO OCHMAN

R\$250,000 – R\$499,999

ANONYMOUS (2)

MICHELE BEHAR '80, STEPHANIE BEHAR '08, AND CHLOE BEHAR '10

THE FORMICOLA FAMILY

THE IOSCHPE FAMILY

JHSF

THE LAPORT FAMILY

RENATO MALULI '82

ROBERTA '91 AND THOMAS MELLO E SOUZA

THATIANA AND LEONARDO '90 MELLO

DIANA AND BERNARDO PAIVA

PARENT TEACHER ASSOCIATION

THE QUINTELLA FAMILY CHARITABLE FUND

THE VERDI FAMILY

R\$100,000 – R\$249,999**

ANONYMOUS (4)

ANA CAROLINA AND JOSÉ ROBERTO AURIEMO

GRAZIELLA AND HELIO BELTRÃO

THE BIAGI FAMILY

ANA PAULA AND MAURICIO BITTENCOURT A. MAGALHÃES

GABRIELA AND ADRIANO BORGES

THE CABRAL-GARDNER FAMILY

CAROLINA CASAÑAS-GIRÁLDEZ AND JUAN GIRÁLDEZ

SHIRLEY AND ALEX '84 CHANG

MARIA FERNANDA AND FABIO* COELHO

SORAYA AND EDGARD CORONA

REGINA AND GUSTAVO* DINIZ JUNQUEIRA

FLAVIA AND ANTOINE FAUGERES

DEBORAH AND PAULO HAEGLER

CHRISTINA AND JOSÉ CARLOS HAUER SANTOS

DENISE AND PATRICK HRUBY

THE HUANG FAMILY

ROBERTO LUIZ JUSTUS '73

MYLENA, CARLINHOS '84, JOÃO '17, AND PEDRO '27 KALIL

CAMILA AND DAVID KAHN

GIULIANA AND MARCIO KAUFMAN

MÔNICA AND JOSÉ KFURI

JULIANA AND RENATO KLARNET
 LILY AND JOE '89 LEE
 THE LUSTOSA VEIRANO FAMILY
 PATRICIA AND MARCELO MARCO ANTONIO
 THE MARKAKIS FAMILY
 LUCIANNA AND ANGEL '88 MARTINEZ
 LARISSA AND CAIO MESQUITA
 GABRIELLA AND JOSÉ MIGUEL NETO
 VICTORIA '18 AND CLARA '19 MIRANDA
 MÁRCIA AND KASUO MIYAKE
 THE MOFARREJ FONSECA FAMILY
 CRISTIANA AND RODOLPHO* PROTASIO
 FERNANDA AND FABIO ROSSI
 THE SÁ FAMILY
 CAMILA AND JÓRIO SALGADO GAMA
 THE SHORES FAMILY
 PAULA SOARES AND CARLOS HITOSHI* F. CASTRO
 ROBERTA SUPPLY AND PHILLIP BENDENOUN
 VERONICA SVERNER AND JORGE ARRUDA
 ANA CAROLINA AND MARC SZLEZYNGER
 THE SZTAMFATER LOTTENBERG FAMILY
 LUCILA TCHIRA AND JEFFREY* HOBERMAN
 TATIANA AND ALEXANDRE THUMLERT
 CAMILA VIEIRA SANTOS AND CRISTIANO BIAGI
 CRISTIANE AND JOHANN* MATHIAS VON BERNUTH
 TÂNIA AND ARNOLDO WALD

**Board Member*

***Adjusted from R\$100,000 to R\$150,000 on January 1, 2018 to keep pace with inflation.*

OTHER CENTENNIAL CAMPAIGN DONORS

R\$10,000 - R\$99,999

CAROLINA AND PATRICE ETLIN
 VERIDIANA AND GUILHERME FERREIRA

R\$5,000 - R\$9,999

CLASS OF 2025
 MARIA FERNANDA AND ADELINO ARANTES
 FERNANDA AND LEONARDO MORARI
 CHARO AND RAMON SÁNCHEZ
 DANIELA AND ABRAHAM WEINTRAUB

R\$2,500 - R\$4,999

THE HAENNI-O'CALLAGHAN FAMILY

R\$1,000 - R\$2,499

CAROLINA '27 AND TIAGO '30 MASON BRUNO
 AMRIT H. MOHANANI '04
 CARLO '01 AND MARINA PADOVANO
 RENATA ROMANICH AND HENRIQUE BUOSI

R\$1 - R\$999

CLASS OF 1965
 ANGELA LOPES
 JULIA OLIVEIRA AND DR. MATHEUS RIBEIRO BARCELOS
 THE ROANE FAMILY

THE CENTENNIAL CAMPAIGN EXECUTIVE COMMITTEE

The Centennial Campaign Executive Committee (CCEC) was formed to serve as the primary voice for the school's Centennial Campaign. CCEC members cultivate relationships with parents, alumni, grandparents, companies, and foundations and support Graded by fostering a culture of giving. We are thankful for their extraordinary dedication and passion. It is only with the participation of all stakeholders that Graded can reach its goals and achieve its vision for the future.

Renato Ochman, Co-chair
 Amalia Spinardi, Co-chair
 Merav Bender de Safdie
 Ana Cabral-Gardner*
 Luiz Galeazzi '81*
 Jeffrey Hoberman*
 Andrea Johannpeter
 Roberto Klabin
 Caroline Pinheiro Lima*
 Lorena Pinheiro Lima '91
 Renata Queiroz Moraes
 Veronica Sverner Arruda
 Fernanda Vidigal

Richard Boerner, Superintendent, Ex Officio
 Susan Clain, Chief Advancement Officer, Ex Officio
 Julia Oliveira, Development Manager, Ex Officio

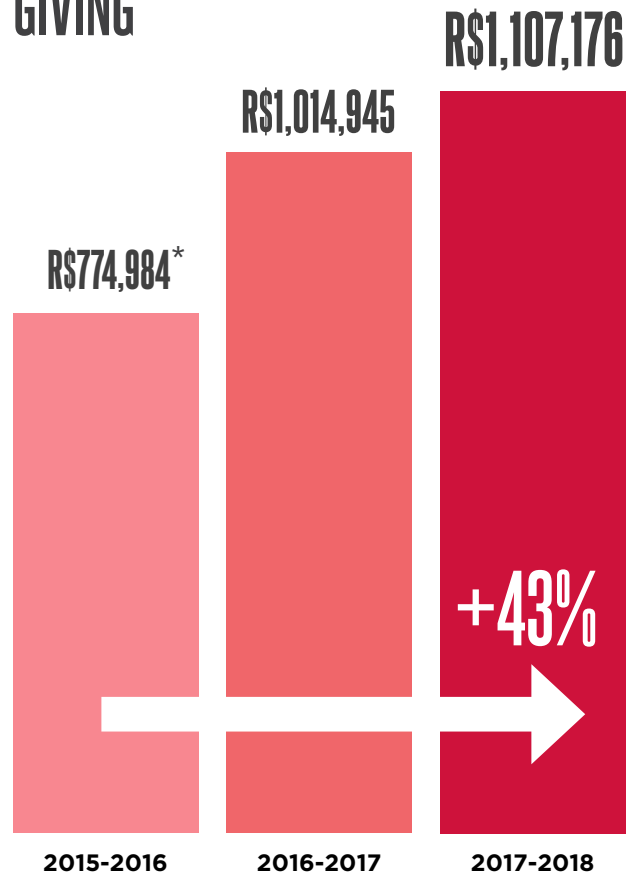
**Board Member*

"As I work to encourage families and alumni to join our beautiful projects, I feel closer to the Graded community. Being a Centennial Campaign Executive Committee member is a great opportunity to give back to this wonderful school. Witnessing philanthropy teaches our children how to make a positive impact and become global citizens."

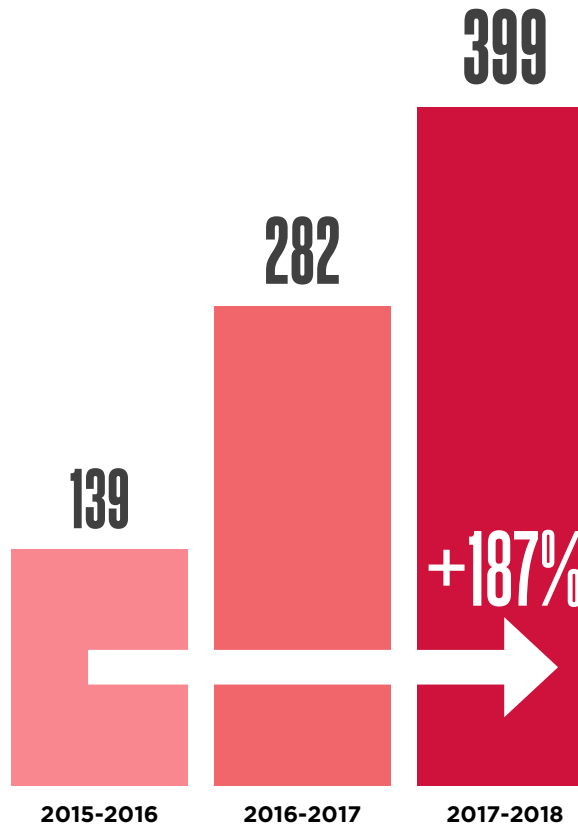
Veronica Sverner Arruda, CCEC Member

GRADED ANNUAL FUND

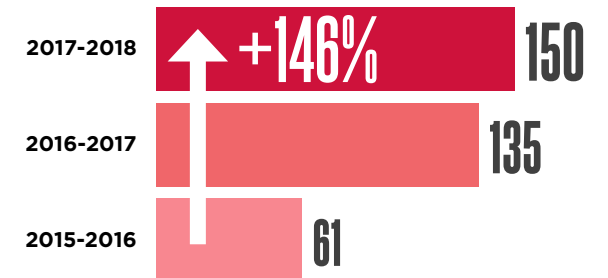
TOTAL GIVING



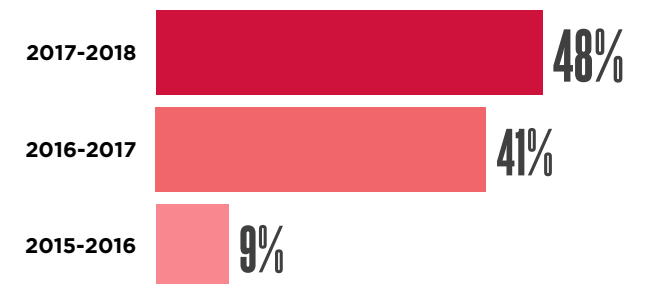
NUMBER OF DONORS



NUMBER OF PARENT DONOR HOUSEHOLDS



PARTICIPATION FACULTY/STAFF



*Total Graded Annual Fund giving no longer includes US State Department grant.



PROJECTS SUPPORTED BY THE 2017-2018 GRADED ANNUAL FUND



FREENOTES HARMONY PARK



PINNIES FOR SOCCER



GRADED SCHOLAR PROGRAM SUPPORT

INNOVATION CENTER AND HUB EQUIPMENT

AUDITORIUM CURTAINS AND THEATRICAL SCENERY

ZOMBIE ZOO

DISPLAY PANELS AND CUBES FOR ART EXHIBITIONS

GRADED'S RUN AGAINST CANCER



CALDECOTT AWARD-WINNING ILLUSTRATOR ERIC ROHMANN AND AWARD-WINNING AUTHOR CANDACE FLEMING VISIT



LIKEMINDS

PROJECTOR, SCREEN, AND UPDATED SOUND SYSTEM FOR LOWER SCHOOL GYMNASIUM

MODERN ROLLING DISPLAY BOARDS



LEGO EDUCATION KITS

SOCCER RESERVE BENCHES

MIDDLE SCHOOL SPEAKER SERIES

UPPER SCHOOL SPEAKER SERIES



HAMMOCKS FOR GARDENS

GRADED ANNUAL FUND HONOR ROLL OF DONORS

CENTENNIAL CIRCLE R\$19,200+

ANONYMOUS (2)
VALERIA AND FERNANDO BLAY
THE CALHEIROS FAMILY
JOÃO PAULO DINIZ
WILLIAM A. FRANKE '55
CARLA AND FELIPE '90 NABUCO
CAROLINE AND MAXIMO '94 PINHEIRO LIMA
THE PARENT TEACHER ASSOCIATION
ODILON QUEIROZ FILHO
MERCEDES VIDAL AND GUSTAVO PIMENTA
GARCIA
CRISTIANE AND JOHANN MATHIAS VON
BERNUTH

TRUSTEE CIRCLE R\$10,000 - R\$19,199

MARISTELLA ANSANELLI AND VITOR FAGA DE
ALMEIDA
THE CABRAL-GARDNER FAMILY
THE CASAÑAS-GIRALDÉZ FAMILY
MARIA FERNANDA AND FABIO COELHO
VERIDIANA AND GUILHERME FERREIRA
THE GALEAZZI FAMILY
GALEAZZI & ASSOCIADOS
PAIGE AND CLAUDIO GEIGER

ISABELA AND JOSÉ LUIZ DE GODOY PEREIRA
INNOVALAB
ANDREA AND GUILHERME JOHANNPETER
REGINA AND GUSTAVO DINIZ JUNQUEIRA
FRANCIS ORTEGA MALATESTA
JULIANA AND ROBERTO '90 SALLOUTI
LUCILA TCHIRA AND JEFFREY HOBERMAN
FERNANDA AND ALVARO AUGUSTO VIDIGAL

CENTURY CLUB R\$5,000 - R\$9,999

ANONYMOUS (2)
MARIA FERNANDA AND ADELINO ARANTES
LEANDRA AND MAURICIO M. AURIEMO
IN THE NAME OF BEATRIZ '24, MARIA '26, AND
JOÃO PEDRO '28 BORGES
CLASS OF 2026
SHERRY AND MAURICIO ESTEVES
THE GAMA MEDEIROS FAMILY
FLAVIA AND MARCELLO HALLAKE
ANA CRIS MASTRODOMENICO AND ALBERTO
CARVALHO
RENATA QUEIROZ AND JOSÉ ERMÍRIO DE
MORAES
THE ROANE FAMILY
PAULA SOARES AND CARLOS HITOSHI F. CASTRO
KEREN AND EDUARDO SORIANO

EAGLE CLUB R\$2,500 - 4,999

ANONYMOUS
MARIE F. AND JAMES BEARDWOOD
GRAZIELLA AND HÉLIO BELTRÃO
IN THE NAME OF RICKY '17 AND GABRIEL '28
BILTON
THE BOERNER FAMILY
IN THE NAME OF NOLAN BOERNER '18
THE BOETGER FAMILY
MARISA AND WALTER DISSINGER
SHANNON AND BARRY ENGLE
ISABEL FIGUEIREDO AND TINITI MATSUMOTO JR.
ANDREIA AND PEDRO GEYERHAHN
THE LASTRA LARREA FAMILY
SIMONE AND RENATO '82 MALULI
IN THE NAME OF FELIPE MEIRELLES '23
MARIA AND LIBERATO MILO
TAMMY AND FELIPE MONTAGNA
THAIS MORAES AND EDWYN NEVES
FERNANDA AND LEONARDO MORARI
IN THE NAME OF LARA AND ZOE OWSIANSKI '30
PARENTS OF THE CLASS OF 2027
PG2 COMUNICAÇÃO
THE PORTO FAMILY
THE ROCHA AZEVEDO FAMILY
IN THE NAME OF RAFAEL ROCHA AZEVEDO '18

EURICA AND GUILLERMO SHIGA
MÁRCIO TABATCHNIK TRIGUEIRO
ANA PAULA AND CUSTODIO TOLEDO
LUCIANA AND MARCOS TOLEDO DE BARROS

GOLD DONOR R\$1,000 - R\$2,499

ANONYMOUS (3)
IN THE NAME OF GISELE BAO '28
CARLA AND TIAGO MASON BRUNO
MARCELLO BULGARELLI
LANBO CAO
SUSAN CLAIN
RENATA AND ANTONIO '00 CONCEIÇÃO
IN THE NAME OF BENJAMIN DEBROSSE '18
LINDSAY DEHARTCHUCK AND RISHI KUMAR
RICARDO FERNANDEZ
IN THE NAME OF NICHOLAS FONTES MASAGÃO
RIBEIRO '18
ELAINE AND SILVIO GABOR
JULIANA GERMINARI AND DENIS LEE
GRADED FUND RAZOR
TRACY HARRISON AND JORGE PEIXOTO
THE HOBBS-BECKLEY FAMILY
THE HUANG FAMILY
NADINE KITTO AND ROB SWITZER
THE KLEIN DUEK FAMILY

THANK YOU 고맙습니다 TACK

GRADED ANNUAL FUND HONOR ROLL OF DONORS

IN THE NAME OF BEN '27 AND ZOE '29 KLOTZ
IN THE NAME OF SOFIA LEITE DA COSTA '31
THAIS MARIZ '93

KEVIN JAMES MAYKUT AND VANCE ARTHUR
BOISJOLI

SANDRA ROLLER MENDONÇA

GUILHERME, LUCAS '17, AND MATHEUS '20
MENEZES

THE MORANDI BROTHERS

IN THE NAME OF FERNANDO OCHMAN '18

DANIEL BLEECKER PARKE

THE PROTASIO FAMILY

THE REGEN FAMILY

RENATA ROMANICH AND HENRIQUE BUOSI

THE RUSSO FAMILY

PRISCILA AND PHIL SCHEINBERG

THE SCIAUDONE-LOUREIRO FAMILY

AMALIA SPINARDI

BETINA VEIGA TING '88, PETER TING, PJ TING '30,
AND YASMIN TING '29

LUIZA VON MUTIUS HALLACK '04

DEBBIE AND MORGAN WATSON

IN THE NAME OF GABRIEL '19 AND JOSHUA '22
YAMADA

SILVER DONOR R\$1 - R\$999

ANONYMOUS (19)

ELLEN AGUIAR DE SOUZA

FLAVIO AUGUSTO AGUIAR DE SOUZA

VICTOR A. S. '21

CRISTIANE ALMEIDA AND SERGIO LIMA

LUZ MARIA ALONSO

GABRIEL ALVES

ISABELLA ALVES

JESSICA ALVES FERREIRA

JOSÉ ADELSON ALVES MELO

ROBERTO AMARAL DE ALMEIDA ROCHA

PEDRO ANCHIETA '10

ELIANA M. ANJO

ROGNEY ANSELMO

DANIEL ARIPPOL '92

ALAN AURICCHIO

FELIPE A. '21

RENATO M. AURIEMO

MARIANA AWAD

MARIA IRENILDA S. AZEVEDO

SILVANO S. AZEVEDO

LUCIANA BARBOSA

MAURO BARBOSA DE OLIVEIRA

STEVEN BARKDOLL

RENATA BARRICHELLO BARTZ

PHILIPPE BARROS '09

CHRISTIAN BARTZ

BOB BAUER '65

STEPHANIE BEHAR BRAGA '08

MICHELE BERALDES

SIRI BERMAN AND STEFAN BARSANTI

MAYER BOACNIN

FANNLIE BOHN CHAO

PETER IAN BOHN CHAO '16

STEPHANIE ANN BOHN CHAO '10

JULIA BORDIN '07

GUILHERME BRAGA

ISABELLA CHRISTINE BRONZATO DE CASTRO
RIBEIRO '14

JULIA CATHARINE BRONZATO DE CASTRO

RIBEIRO '14

ESTEVÃO B. '29

TIZ B. '27

SUSAN BURNQUIST '73

ANTHONY CALFAT

ALEXANDRE CAMELLO '93

CAMILÃO

MARILENE B. CAMILO

LUIZ CAMPOS '15

PAULA CARNEIRO BORRA '85

ALESSANDRO CARQUEIJÓ MORAES

RENATA AND FABIO "TALL MAN" CARVALHO

LUCIANA CASTRO

CYNTHIA CATLETT '99

KARINA CAVALCANTE

PRISCILA C. '21

EDISON CHOONG

BETH COELHO

GABRIEL C. '19

ALINE COSTA

KATERI COUTURE-LATOURE

MARIA LIGIA DAMATO CAPUANI '82

LAURA DAVIS

FELIPE D. '21

NATASHA DIMITROVA

@_BE_SWEET BY BETINA DUARTE '18

CHARLOTTE DUPASQUIER '09

GEOFFREY EDEL

FRANCISCO EMIDIO

ANDREA FARCILLI

NATÉRCIA FARIA

FLAVIA AND ANTOINE FAUGERES

OCKI FERNANDES

ADRIELLI F. G. S. '20

MARIA BEATRIZ F. G. '27

KELLY FERREIRA

MARCOS FERREIRA

THOMAZ FIGUEIREDO

ANILTON FLORES

OBRIGADO GRACIAS תודה

GRADED ANNUAL FUND HONOR ROLL OF DONORS

KARINA FONTÃO
NICHOLAS FONTES MASAGÃO RIBEIRO '18
STEFANO F. '20
THE FORTES FAMILY
BRENO FREITAS
LUCAS G. V. '22
PATRICIA GEHRELS
MARCELO GIAROLLA
FRANCISCO GILSON
CARRIE GILTNER
CAMILA G. '20
VERA GOIS
MALU GOMES
JOÃO G. T. F. C. '26
LUIZA G. T. F. C. '30
JOÃO PAULO GONZAGA
CATALINA G. S. '26
SANTIAGO G. S. '22
EMMA G. T. '19
BRUNO G. '21
LUIZA MARON GUNDIM '14
OSCAR GUNDIM JR.
ALESSIO HABERER
CHIARA H. '19
DANIEL HABERER '89
ALEXANDRE NOBRE '95
GABRIELA HADDAD NOBRE
MARCOS H. N. '25

TANIA HADDAD NOBRE '95
JADA H. '19
JAMES HARRIS
LUCIANA HART
THE HEISTER FAMILY
JUAN HERRERO
CARLA AND MARK HILLMAN
KAREN HIME '10
SILVIA MARIA HOLANDA
EILEEN HUANG
ERIC H. '24
MAX H. '19
THE HUMAN RESOURCES TEAM
DOUGLAS JAFET '75
FELIPE J. '21
RAFAEL J. '21
RENATA JAFET
GIOVANA JANNUZZELLI
DANIELA JARAMILLO '01
MARTIN JORGE JIMENEZ GOSSLER '68
ROBERTO J. '23
NAMRITA KAPUR
ALICE KIM
LIKA KISHINO AND ROBBIE STANGE
CHARLES KRELL '78 AND FAMILY
DALLIN L. '24
KYLE LEDFORD
FLAVIO LEITE CAVALCANTE

SEAN M. LENAHAN
ALEKSANDRO S. LIMA
DANIEL LIU '08
MATHEUS LOMBARDI
LUIS FERNANDO LOPASSO
CARLOS FLAVIO LOPES '05
MARK LUND '71
IANKA MACHADO
MARINA MACHADO
DELFO MACHADO NETO
JULIA M. N. '23
MAIA M. N. '21
ALICIA M. P. '19
LYGIA MACHADO PADRON
EMILY MAH
PEDRO MAIA '08
CAROLE MAKDESI
GABRIEL M. '22
WALID MAKDESI
ISABELLA MALULI DE CARVALHO DIAS '15
VALÉRIA MALULI DE CARVALHO DIAS '86
DEBORA MANDU
MARIA APARECIDA MARCOS
HEITOR MARON GUNDIM
ALEXANDRE MARQUES NASCIMENTO
DIEGO MARTINS
MARIA VITORIA MARTINS '10
CRIS MATHEUS

ELIEDE MEIRA GOSSLER
NATALY MARY MEIRA GOSSLER
NATASHA MARY MEIRA GOSSLER
FELIPE M. S. '21
PAULA DE MELO NISHINO
EDUARDO MENDEZ
NICHOLAS M. '22
SILVANA MENEGHINI
CLARA M. C. '20
SOFIA M. C. '21
CARLOS MIRANDA '10
OLGA MOLINA
MARCELA AND RODRIGO MONTEIRO
NORMANDO
DOUGLAS MORENO
ROBERTO MOTTA
THE MUSZKAT BESBORODCO FAMILY
ADILSON NASCIMENTO SOUZA
DIEGO N. '19
NATHANIEL NELLO FALBER '07
NATALIE NESANOVIS CATLETT '02
FELIPE O. '20
DAISY "WOOF WOOF" DE OLIVEIRA
LUIS ANTONIO DE OLIVEIRA
JESSICA OLIVIERA '96
JULIA O. '24
JULIA OLIVEIRA AND DR. MATHEUS R. BARCELOS
NILS ORBERG '76

DANK JE ありがとう MERCI

GRADED ANNUAL FUND HONOR ROLL OF DONORS

LUIZ PAJEU
CAROLINE PARK '05
JOSÉ PATRIOTA
SILVIO PEDROSO
FELIPE P. '23
OLIVIA P. '21
EMERSON PEREIRA
ANDRE PEREIRA CARDOSO GELFI
MARIA DE FATIMA PEREIRA DOS SANTOS
NATÁLIA PERIDES
CARLA PETTINATI
ANDREW PICCININI MILLER
ANDREA PILNIK PIATETZKY '91
VANESSA PIZZUTTI ORTENCIO
NURIA PONT
HEATHER PURCELL AND CHRIS KELLY
ERIN RAFERTY AND PHILIP ALTMAN
ROSANA RAMOS
JESUINO RIBEIRO
JULIANA ROCHA ESQUIERDO DE ANDRADE
MARCELA RODRIGUES
RIBAMAR RODRIGUES
LUIZA R. V. '20
SHORMILA ROY
RENATA RUSSO CORREIA '99
CAROLINA SABBAGH GHOLMIA DREVN '04
NATHALIA SACKS
NICOLAS S. '19

TOMAS SALAZAR
MARIA SALDARRIAGA AND FABIO ESCOBAR '83
PAULO SALES SANTOS
HELOISA SALGADO '10
BRENO S. '20
LUIZ HENRIQUE DE SANTANA JUNIOR
ANSELMO NICOLAU DOS SANTOS
EDIL SANTOS
ELIANE DOS SANTOS
KEVIN S. '20
IN THE NAME OF MARILIA SANTOS
ROGERIO SANTOS
TATIANE SANTOS
THE SAPIENZA FAMILY
ANTONIO ALBERTO S. '26
CLÉMENT SARRE
VERONICA SAVELA
ROCHELLE SAYLER
CAROLINA SCHEINBERG '97
ISABELLA S. M. '20
JACQUELINE SENOI MORAES
ROBERTO SERWACZAK
ATSUKO AND TOSHIKI SHINAGAWA
RIDHIMA S. '20
SIDDHANT S. '24
ADEILTON SILVA
ELAINE SILVA
MARIA APARECIDA S. SILVA

POLIANA SILVA AND MARIA FLOR '28
DANIEL SNEYERS PONT '16
SIDNEI SOARES
ZEINO FILHO SOLOVIOFE
IN THE NAME OF BRUNO JR. SOUSA
AURILIO SOUZA
SUELI SOUZA
AMADEU DE SOUZA SANTANA
FRANSCESCA SPERB MACHADO NETO
VINCENT S. '26
DONA EMILIA SUZUKI
EMILY SZE
MARK SZE '08
GUSTAVO S. L. '25
VANESSA TAKAMURA
H.M.H TER LINDEN
CIBELE THOMAZ
CARLA ANDREA TIEPPO
KUCZERA TOPOROWICZ CAHÊ
EDÚ TROTA LEVATI
CAIO V. D. '25
A.J. VAN WINGERDE
EVA V. W. '19
JOSEPH V. '20
DANIEL VIEIRA
IN THE NAME OF MIGUEL VINICIUS
LEONARDO V. M. '19
GARRETT W. '22

SYDNEY W. '20
KIRSTY WILKINSON
BERNARDO Y. '28
BRUNO YAMAMURA
DANIEL YAMAMURA
HENRIQUE Y. '22
PATRICIA YAMAMURA
CECILIA AND FERNANDO ZANFORLIN
TATIANA ZARIF
THE ZICARELLI FAMILY
RENATA ZIEGERT HASSUN '99

IN-KIND DONATIONS

VALERIA AND FERNANDO BLAY
GALEAZZI & ASSOCIADOS
INNOVALAB
REGINA AND GUSTAVO DINIZ JUNQUEIRA
SIMONE AND RENATO '82 MALULI
PARENTS OF THE CLASS OF 2027
PG2 COMUNICAÇÃO
CAROLINE AND MAXIMO '94 PINHEIRO LIMA
FERNANDA AND ALVARO AUGUSTO VIDIGAL

谢谢

GRAZIE DANKE

شكراً

GIVING TO GRADED EVENTS

Every year, in collaboration with Graded's Advancement Department, the Centennial Campaign Executive Committee organizes events to update stakeholders on the progress of the campaign and outline fundraising priorities for the future. We would like to thank our committee members and hosts for their exemplary dedication and generosity.



As we approach Graded's 100th anniversary, alumni gather around the world to celebrate their Eagle spirit! This year, receptions were held in Boston, New York, and São Paulo.

ALUMNI HIGHLIGHTS



NEW YORK CITY RECEPTION



BOSTON RECEPTION



LIKEMINDS SÃO PAULO

2017-2018 LEADERSHIP TEAM

(LISTED ALPHABETICALLY)

MARIE BEARDWOOD
Director of Technology Integration

SHANNON BECKLEY
Lower School Associate Principal

RICHARD BOERNER
Superintendent

VANCE BOISJOLI
Lower School Principal

SUSAN BUTLER
Middle School Associate Principal

SUSAN CLAIN
Chief Advancement Officer

FIONA COPE
High School Associate Principal

ROBERTO D'ERIZANS
Middle School Principal

OCKI FERNANDES
High School Principal

ELAINE GABOR
Director of Business and Operations

TRACY HARRISON PEIXOTO
Director of Admissions

SHAUNA HOBBS
Director of Teaching and Learning

KAREN MATTOS
Director of Brazilian Studies

RENATA ROMANICH
Director of Human Resources

ROB SWITZER
Director of Athletics and Activities





GRADED

THE AMERICAN SCHOOL OF SÃO PAULO

Av. José Galante, 425 - São Paulo, SP - Brazil - 05642-000
+55 11 3747 4800
www.graded.br