

Scenario 1: Finding a Lost Puppy

You lost your puppy in the park and need to find it.



Scenario 2: Doing Homework

You have a lot of math homework and are feeling stuck.



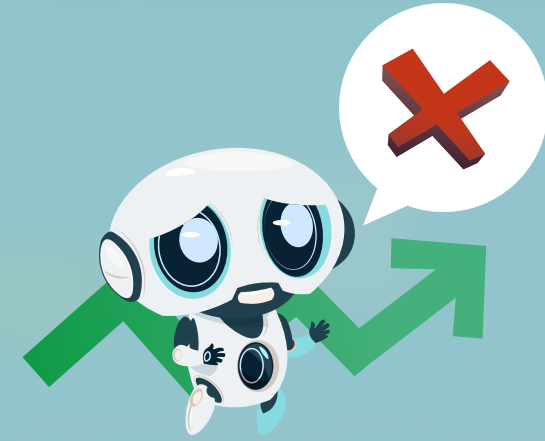
Scenario 3: Playing Music

You want to listen to music but can't decide what to play.

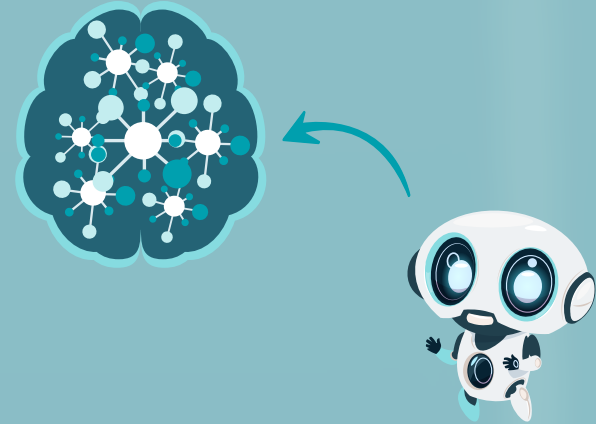


Match each step with its explanation:

1. Making Mistakes, Getting Better



2. Creating the AI's Mind



3. Teaching the AI with Data



4. AI's Learning Milestone



A. Once the AI can reliably perform the task, its training is complete.

B. During training, the AI's predictions are compared to the actual answers. If it mixes up a cat with a dog, it remembers and tries not to do that again, getting smarter each time.

C. This is the AI's "neural network," a sophisticated mathematical model that learns from the data

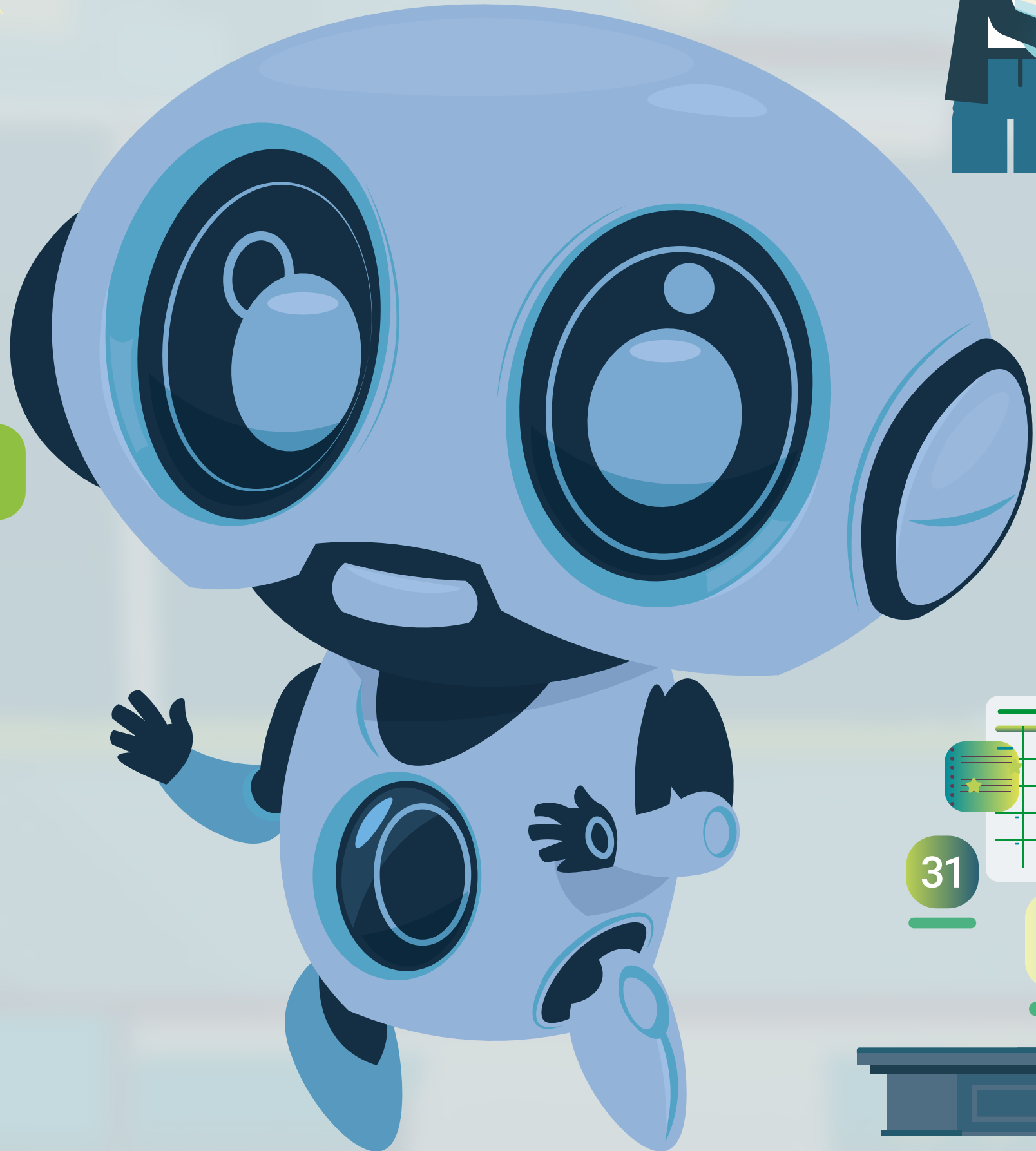
D. The AI is shown countless examples of the task it needs to learn.

Drag and drop what this chatbot is capable to do:

What is the weather today?



- [Dark blue rounded rectangle with three white horizontal lines]
- [Light blue rounded rectangle with three white horizontal lines]



Use the green sticky notes for listing the advantages of Artificial Intelligence (AI), and the beige sticky notes for its disadvantages

PROS

CONS

AI can process and analyze large amounts of data much faster than a human can.

The development and maintenance of AI systems can be costly.

AI's decision-making process is often not transparent, leading to concerns about accountability.

AI can improve safety in hazardous environments by replacing human presence.

AI systems can be biased if trained on biased data, leading to unfair outcomes.

AI helps in automating repetitive tasks, increasing efficiency in various industries.

AI can lead to job displacement as machines replace human roles.

Advanced AI technologies can aid in medical diagnosis and research.

Here are 10 questions for you. If the answer is 'Yes,' place the question in the green box. If the answer is 'No,' put it in the red box.

1. Is AI really a robot from a sci-fi movie?

2. Is AI more like a super-smart helper in our gadgets?

3. Does AI help us play music and correct our spelling?

4. Can AI answer our questions?

5. Can AI chatbots experience human emotions like we do?

6. Does AI learn in a way similar to how we learn in school?

7. Is AI capable of making moral decisions on its own without human guidance?

8. Is it important to show AI different kinds of stuff so it can learn to be helpful and fair?

9. Can a chatbot become your real friend?

10. Are real friends different from AI chatbots?

