

the Stone Show & hard surfaces

The UK Stone and Hard Surfaces Industry Event | 7-9 May 2025 | **excel** LONDON

co-located
with

UK
Construction
Week **LONDON**

in conjunction with

**Stone
Specialist**

OVER 25 YEARS OF **EXCELLENCE**



*Visit our
website*

VISIT US: **HALL N2-N3, STAND D1**

TOOLING | MACHINERY
CAD TRAINING | AFTERCARE

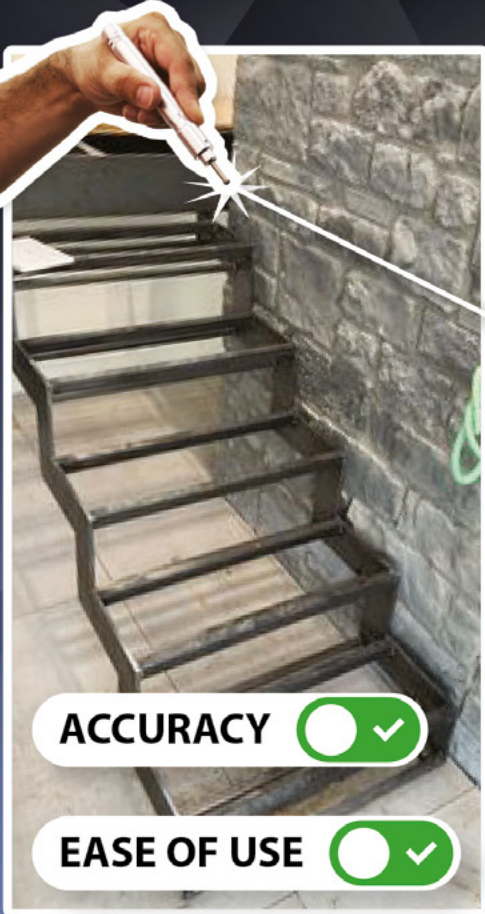
01621 742577 | info@dzambelis.co.uk | dzambelis.co.uk

DZambelis
Limited

PRODIM

GET WIRED

GET THE MOST RELIABLE TECHNOLOGY AVAILABLE



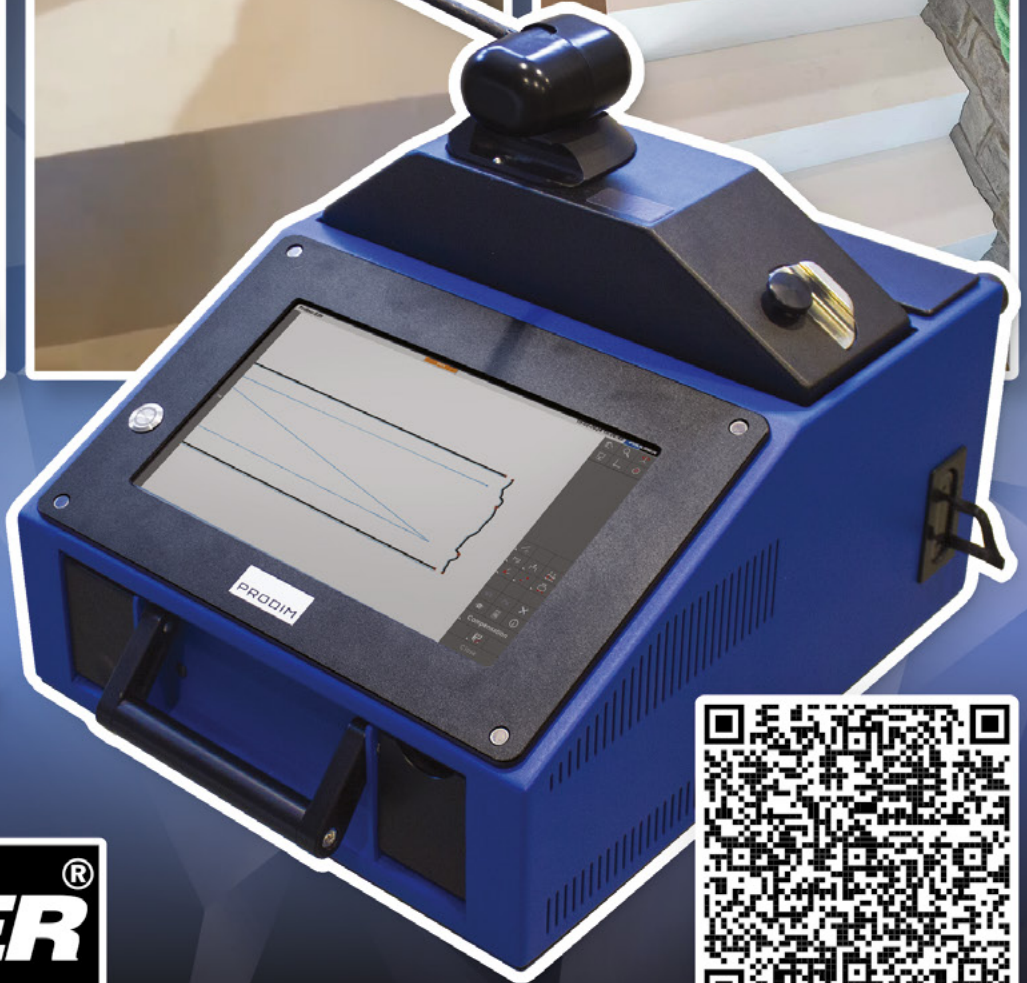
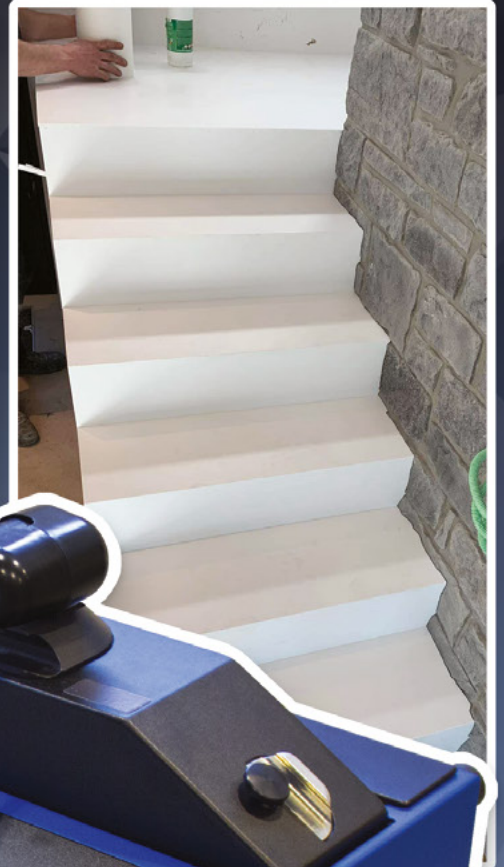
ACCURACY ☒

EASE OF USE ☒

SPEED ☒

FLEXIBILITY ☒

DURABILITY ☒



PROLINER®

FOLLOWED BY EVERYONE, MATCHED BY NO ONE !

PRODIM INTERNATIONAL BV | PHONE: +31 492 579050 | WWW.PRODIM-SYSTEMS.COM

Welcome to The Stone Show & Hard Surfaces 2025

We're delighted to welcome you to this year's Stone Show & Hard Surfaces — a truly special edition marking both a celebration of the show's incredible journey so far and the start of an exciting new chapter.

As you may have heard, this year's event is a little extra special. Following Media 10's recent acquisition of The Stone Show & Hard Surfaces from The QMJ Group, this 2025 edition — co-located once again with UK Construction Week London — will be the final show delivered by the QMJ team. And what a send-off it promises to be!

Looking ahead, the future of the show couldn't be brighter. In 2026, Media 10 will relaunch the event under a bold new name: **Stone & Surfaces**. This reimagined and expanded show will become an annual highlight for the global design community — bringing together the very best in natural stone, hard surfaces, flooring, wall coverings, and surface innovation from around the world.

Visitors can look forward to exciting new features in the years ahead, including live craftsmanship demonstrations, CPD-accredited learning opportunities, and interactive zones designed to inspire and inform.

And for our exhibitors, we're pleased to introduce your new main point of contact going forward — **Hannah O'Leary**, Sales Manager for Stone & Surfaces. Hannah will be available throughout the show in the **Sales Lounge at Stand F45**, so please do stop by to say hello, ask questions, or chat about future opportunities.

But before we get there — today is all about you. The exhibitors, speakers, partners, and visitors who make this community so special.

Thank you for being part of this year's Stone Show & Hard Surfaces. Whether it's your first visit or you've been with us since the beginning, we hope you enjoy the show, discover new ideas, and make valuable new connections.

Here's to the future of Stone & Surfaces — and to the very best of what's yet to come.

Enjoy the show!

The Media 10 & QMJ Teams

In the show guide

Floor plan & A-Z exhibitor list

Floorplan showing alphabetical listing of exhibitors, stand numbers and other key locations.

Product locator

Looking for a particular product or service? Find out who is showing what.

The Stone Show seminar theatre

Schedule of free-to-attend sessions across all three show days.

Meet the speakers

Natural Stone Awards

Emerging Talent Award

Exhibitors A-Z

Stone Specialist

The Summer issue of Stone Specialist magazine.

Demo Trail

Over the three days of the Stone Show & Hard Surfaces Exhibition you can check out live demos from some of our exhibitors. Each day we have a self-guided trail where you can see what these exhibitors have to offer. Head over to stoneshow.co.uk/demotrail to find out more.

Stone Automation

Leica iCON iCS50
Stand C30 – 11:00 & 14:30

Mapei

Duo Maxi Pedestal System
from Profilpass
Stand E20 – 11:30 & 15:00

Vetter

Robotic Cutting Trailers
Stand B20 – 12:00 & 15:30

British Stone Selector

Ethically sourced | Sustainable | Low carbon

Beautiful
British
Stone

For more information
about any of these
stones go to
bit.ly/Britstone

History proves there is no stone more
perfect to weather native climes
and honour British heritage





Featured Stone

Cwt-y-Bugail Dark Blue Grey

Welsh Slate



Welsh Slate stars in London's very first nature-driven hotel experience

A hotel brand that is leading the way in sustainable hospitality has made use in its interiors of an architectural product from Welsh Slate's diverse portfolio.

Sleek dark countertops produced from Welsh Slate's honed and dressed Cwt-y-Bugail Dark Blue Grey slate feature on the vanity units and minibar tops in the 181 bedrooms and suites of the 1 Hotel, in Mayfair, London.

Specified by hotel interior design specialists the GA Group, the Welsh Slate products complement the organic design narrative at the nine-storey flagship building which includes elements such as living moss walls and timber flooring.

Rebuilt and refurbished from two existing buildings but with an additional upper two floors, the award-winning 1 Hotel was reimagined under the umbrella of US-based

SH Hotels & Resorts which has systems in place to reduce its environmental impact by minimising energy usage, preserving non-renewable materials, and reducing plastic and paper consumption.

While the 181 bedrooms are distributed across 14 different categories, each features the Welsh Slate vanity units and minibar tops.

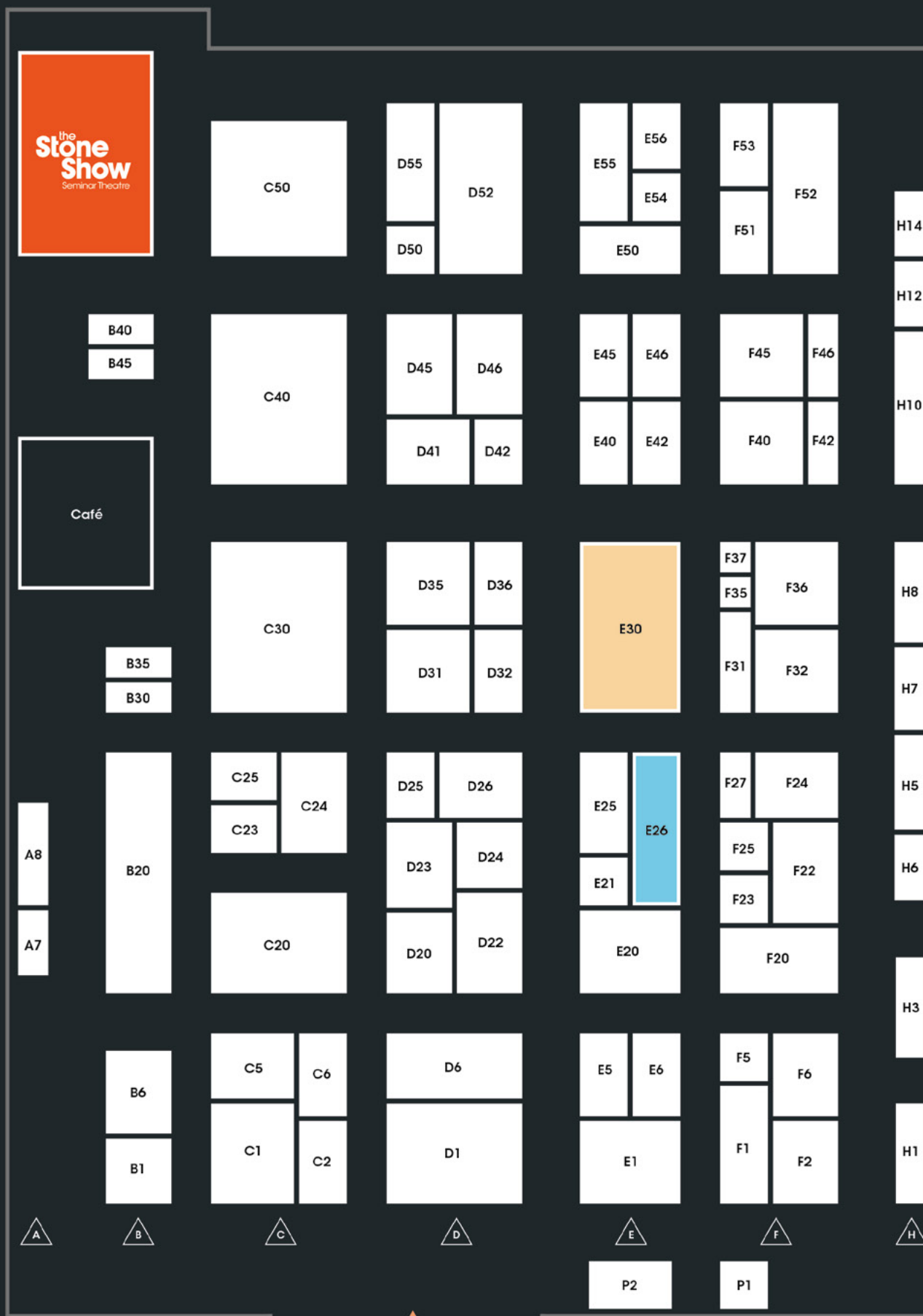
The material is supplied as a completed wipe-clean slate worktop or as unfinished or polished scant. At 1 Hotel Mayfair, it was fabricated by GD Stones and installed by County Contractors.

Unaffected by normal extremes of temperature, a Welsh Slate countertop can withstand the worst a domestic or commercial bathroom or kitchen can throw at it. It is also non-fading and stain proof and available in Penrhyn Heather in addition to the Cwt-y-Bugail used at the 1 Hotel Mayfair.

www.welshslate.com



the Stone Show & hard surfaces Floorplan



A-Z Exhibitor List

A

Aquacut Ltd	D55
Archiporcelain	H1
Arcturus Stones	F27
Artisan Stone Supplies Limited T/A Gwrhyd Specialist Stone Quarry	E25
ASM Supplies Ltd	B40

B

BCC Stone Ltd	F24
Brachot Ltd	F20

C

Ceramique International Co. Ltd	F25
Claude N Smith Ltd	A7

D

D Zambelis	D1
Dal Prete	D55
Danyang Sail Tools Co. Ltd	F23
Dimpomar	C2
Donatoni Macchine SRL	C30

E

English Stone Forum	C20
---------------------	-----

F

Fila Solutions	D32
Foshan Ansheng Building Material Co. Ltd	E6
Foshan Sunvin Ceramics Co. Ltd	H7

G

Genex Stones London	P2
Gestra CZ	B45
Ghodsi Stone	D46
GNT - Granitos do Norte	C6
Guangdong Bosun Stone Co., Ltd	H10
Guangzhou Vidastone Co. Ltd	D23

H

Harrison Goldman Ltd	F35
Hirsch Glass (Dalian) Co. Ltd	F42
Historic England	C20

I

Icon (The Institute of Conservation)	C20
Institute of Historic Building Conservation (IHBC)	C20

J

Johari Stonex Industries Pvt. Ltd (Government of India Recognised Star Export House)	D50
Julipetra	E42

K

Keope Ceramiche by Cristian Garofalo	D35
Klindex Srl	H8

L

Landmark Surface Co. Ltd	C1
Leica Geosystems Ltd	C30

M

Magratex, LDA	F40
Mapei	E20
Marmo Meccanica	C50
Marmolesdeco	D25
Modern Quartz Stone	D6
Moksh Corp	F53
MPG Stone India	C5
MVC - Portuguese Limestones	F1

N

Nan'an Guangtaixiang Stone Co. Ltd	D22
------------------------------------	-----

P

Pacific	F6
ParCa Ltd	F51
Pardais Granites	E45
Paving Stock Ltd	D52
Polimagra	D45
Porcelain4Top	E1
Portland Sculpture & Quarry Trust	A8
Prodim	D42
PSI Stones Pvt Ltd	E21

Q

Quanzhou Xinxing Stone Technics Co. Ltd	F36
Quanzhou Zhuoshi Superhard Tool Co. Ltd	F5

R

Repolished Restoration	H8
------------------------	----

S

S.B. Granites Ltd	B30
Sandberg	D36
Shandong Yande Materials Co Ltd	D20
SKC Ltd	H12
Society for the Protection of Historic Buildings (SPAB)	C20
Spatium Petra - Granumlux	E55
SPM - Since 1967	E40
Stona	E56
Stone Automation Ltd	C30
Stone Cladding Systems (SCS)	F31

Stone Federation Great Britain	E30
--------------------------------	-----

Stone Solutions Specialists	H14
-----------------------------	-----

Stone Specialist	F45
------------------	-----

Stonegate	C40
-----------	-----

Sundström Safety	D41
------------------	-----

T

Technoprofil	B35
--------------	-----

Telmo Duarte	F2
--------------	----

Tesimag	C30
---------	-----

The 1810 Company	C25
------------------	-----

The Marble & Granite Centre Ltd	F32
---------------------------------	-----

The Stone Show	F45
----------------	-----

The Worktop Fabricators Federation	F22
------------------------------------	-----

Tile and Stone Journal	F46
------------------------	-----

Tin Shing Stone Ltd	E5
---------------------	----

V

Vadara	H3
--------	----

Vetro Tooling Ltd	D26
-------------------	-----

Vetter UK	B20
-----------	-----

Vyomika Sales	B1
---------------	----

W

Waters Group	C24
--------------	-----

Wodiam	C30
--------	-----

X

Xiamen Dalei Stone Co., Ltd	F52
-----------------------------	-----

Xiamen Fusion Building Material Co. Ltd	D31
---	-----

Xiamen Maixee Imp & Exp Co. Ltd	F24
---------------------------------	-----

Xiamen Milestone Group Co. Ltd	D31
--------------------------------	-----

Xiamen Millions Building Material Co. Ltd	D31
---	-----

Xiamen Northern Stone Co. Ltd	E50
-------------------------------	-----

Xiamen Stone Epic Co. Ltd	E50
---------------------------	-----

Xiamen Zhuoshi Imp & Exp Co. Ltd	H6
----------------------------------	----

Y

Yubi Ceramics Ltd	D24
-------------------	-----

Z

Zhenjiang Fewell Tools Co. Ltd	P1
--------------------------------	----

Product locator

Bathrooms & kitchens

D Zambelis	D1
Dimpomar	C2
Guangdong Bosun Stone Co., Ltd	H10
Harrison Goldman Ltd	F35
Hirsch Glass (Dalian) Co. Ltd	F42
Johari Stonex Industries Pvt. Ltd	D50
Magratex, LDA	F40
Mapei	E20
Marmolesdeco	D25
Modern Quartz Stone	D6
MPG Stone India	C5
Pacific	F6
Sandberg	D36
Shandong Yande Materials Co. Ltd	D20
Spatium Petra – Granumlux	E55
Stone Solutions Specialists	H14
Stonegate	C40
The 1810 Company	C25
The Marble & Granite Centre Ltd	F32
Vetter UK	B20
Xiamen Dalei Stone Co. Ltd	F52
Xiamen Northern Stone Co. Ltd	E50
Xiamen Stone Epic Co. Ltd	E50

Ceramic

Brachot Ltd	F20
Ceramique International Co. Ltd	F25
D Zambelis	D1
Fila Solutions	D32
Keope Ceramiche by Cristian Garofalo	D35
Mapei	E20
Paving Stock Ltd	D52
Sandberg	D36
Stonegate	C40
Yubi Ceramics Ltd	D24

Cladding

Artisan Stone Supplies Limited T/A Gwrhyd Specialist Stone Quarry	E25
BCC Stone Ltd	F24
Dimpomar	C2
GNT - Granitos do Norte	C6
Harrison Goldman Ltd	F35
Johari Stonex Industries Pvt. Ltd	D50
Marmolesdeco	D25
MVC - Portuguese Limestones	F1
ParCa Ltd	F51
Pardais Granites	E45
Sandberg	D36
Stone Cladding Systems (SCS)	F31
The Marble & Granite Centre Ltd	F32
Vetter UK	B20

Consultancy

Artisan Stone Supplies Limited T/A Gwrhyd Specialist Stone Quarry	E25
Harrison Goldman Ltd	F35
Institute of Historic Building Conservation (IHBC)	C20
Marmolesdeco	D25
Sandberg	D36

Consumables

ASM Supplies Ltd	B40
D Zambelis	D1
Klindex Srl	H8
Marmolesdeco	D25
Repolished Restoration	H8
Stone Automation Ltd	C30
Stonegate	C40
Vetro Tooling Ltd	D26
Waters Group	C24
Wodiam	C30

Education/training

English Stone Forum	C20
Historic England	C20
Institute of Historic Building Conservation (IHBC)	C20
Portland Sculpture & Quarry Trust	A8
Society for the Protection of Historic Buildings (SPAB)	C20
Stone Federation Great Britain	E30
The Worktop Fabricators Federation	F22

Engineered quartz

D Zambelis	D1
Fila Solutions	D32
Foshan Ansheng Building Material Co. Ltd	E6
Guangzhou Vidastone Co. Ltd	D23
Modern Quartz Stone	D6
MPG Stone India	C5
Nan'an Guangtaixiang Stone Co. Ltd	D22
Pacific	F6
Shandong Yande Materials Co Ltd	H4
Stonegate	C40
Tin Shing Stone Ltd	E5
Vadara	H3
Xiamen Dalei Stone Co. Ltd	F52
Xiamen Fusion Building Material Co. Ltd	D31
Xiamen Milestone Group Co. Ltd	D31
Xiamen Millions Building Material Co. Ltd	D31
Xiamen Zhuoshi Imp & Exp Co. Ltd	H6

Flooring

Artisan Stone Supplies Limited T/A Gwrhyd Specialist Stone Quarry	E25
D Zambelis	D1
Dimpomar	C2
Guangdong Bosun Stone Co. Ltd	H10
Harrison Goldman Ltd	F35
Johari Stonex Industries Pvt. Ltd	D50
Keope Ceramiche by Cristian Garofalo	D35
Mapei	E20
Marmolesdeco	D25
MVC - Portuguese Limestones	F1
Pacific	F6
Pardais Granites	E45
Repolished Restoration	H8
Sandberg	D36
The Marble & Granite Centre Ltd	F32
Vetter UK	B20
Xiamen Northern Stone Co. Ltd	E50
Yubi Ceramics Ltd	D24

Glass

Hirsch Glass (Dalian) Co. Ltd	F42
Sandberg	D36
Stonegate	C40

Granite

BCC Stone Ltd	F24
Brachot Ltd	F20
D Zambelis	D1
Fila Solutions	D32
Genex Stones London	P2
GNT - Granitos do Norte	C6
Harrison Goldman Ltd	F35
Johari Stonex Industries Pvt. Ltd	D50
Mapei	E20
Marmolesdeco	D25
MPG Stone India	C5
Pacific	F6
ParCa Ltd	F51
Paving Stock Ltd	D52
Polimagra	D45
PSI Stones Pvt Ltd	E21
S.B. Granites Ltd	B30
Sandberg	D36
Spatium Petra – Granumlux	E55
SPM - Since 1967	E40
Stone Cladding Systems (SCS)	F31
Stone Solutions Specialists	H14
Stonegate	C40
Technoprofil	B35
The Marble & Granite Centre Ltd	F32

Xiamen Fusion Building Material Co. Ltd	D31
Xiamen Maixee Imp & Exp Co. Ltd	F24
Xiamen Milestone Group Co. Ltd	D31
Xiamen Millions Building Material Co. Ltd	D31
Xiamen Northern Stone Co. Ltd	E50
Xiamen Stone Epic Co. Ltd	E50

Hard landscaping

Artisan Stone Supplies Limited T/A Gwrhyd Specialist Stone Quarry	E25
Dimpomar	C2
GNT - Granitos do Norte	C6
Johari Stonex Industries Pvt. Ltd	D50
Mapei	E20
Marmolesdeco	D25
MPG Stone India	C5
ParCa Ltd	F51
Pardais Granites	E45
Paving Stock Ltd	D52
Polimagra	D45
S.B. Granites Ltd	B30
Sandberg	D36
Spatium Petra – Granumlux	E55
Stonegate	C40
Technoprofil	B35
The Marble & Granite Centre Ltd	F32
Vetter UK	B20
Yubi Ceramics Ltd	D24

Health & safety equipment/services

SKC Ltd	H12
Sundström Safety	D41
Stonegate	C40

Limestone

Arcturus Stones	F27
Brachot Ltd	F20
Claude N Smith Ltd	A7
D Zambelis	D1
Fila Solutions	D32
Genex Stones London	P2
GNT - Granitos do Norte	C6
Guangdong Bosun Stone Co. Ltd	H10
Harrison Goldman Ltd	F35
Hirsch Glass (Dalian) Co. Ltd	F42
Johari Stonex Industries Pvt. Ltd	D50
Julipetra	E42
Landmark Surface Co. Ltd	C1
Magratex, LDA	F40
Mapei	E20
Marmolesdeco	D25

MVC - Portuguese Limestones	F1	Technoprofil	B35
ParCa Ltd	F51	Telmo Duarte	F2
Paving Stock Ltd	D52	The Marble & Granite Centre Ltd	F32
S.B. Granites Ltd	B30	Xiamen Maixee Imp & Exp Co. Ltd	F24
Sandberg	D36		
Stone Cladding Systems (SCS)	F31		
Stone Solutions Specialists	H14		
Stonegate	C40		
Technoprofil	B35		
Telmo Duarte	F2		
The Marble & Granite Centre Ltd	F32		

Machinery

Aquacut Ltd	D55		
D Zambelis	D1		
Dal Petre	D55		
Klindex Srl	H8		
Leica Geosystems Ltd	C30		
Marmo Meccanica	C50		
Prodim	D42		
Quanzhou Zhuoshi Superhard Tool Co. Ltd	F5		
Repolished Restoration	H8		
Stone Automation Ltd	C30		
Stone Solutions Specialists	H14		
Stonegate	C40		
Tesimag	C30		
Vetro Tooling Ltd	D26		
Waters Group	C24		
Wodiam	C30		
Xiamen Fusion Building Material Co. Ltd	D31		
Xiamen Milestone Group Co. Ltd	D31		
Xiamen Millions Building Material Co. Ltd	D31		

Marble

BCC Stone Ltd	F24		
Brachot Ltd	F20		
D Zambelis	D1		
Dimpomar	C2		
Donatoni Macchine SRL	C30		
Fila Solutions	D32		
Genex Stones London	P2		
Gestra CZ	B45		
Guangzhou Vidastone Co. Ltd	D23		
Harrison Goldman Ltd	F35		
Johari Stonex Industries Pvt. Ltd	D50		
Magratex, LDA	F40		
Mapei	E20		
Marmolesdeco	D25		
Nan'an Guangtaixiang Stone Co. Ltd	D22		
Pacific	F6		
PSI Stones Pvt Ltd	E21		
S.B. Granites Ltd	B30		
Sandberg	D36		
Spatium Petra - Granumlux	E55		
Stone Solutions Specialists	H14		
Stonegate	C40		

Memorials

Artisan Stone Supplies Limited			
T/A Gwrhyd Specialist Stone Quarry	E25		
Marmolesdeco	D25		
S.B. Granites Ltd	B30		
The Marble & Granite Centre Ltd	F32		

Metal

ParCa Ltd	F51		
Quanzhou Zhuoshi Superhard Tool Co. Ltd	F5		
Sandberg	D36		
Stone Automation Ltd	C30		
Vyomika Sales	B1		
Yubi Ceramics Ltd	D24		

Other stone

Artisan Stone Supplies Limited			
T/A Gwrhyd Specialist Stone Quarry	E25		
D Zambelis	D1		
Fila Solutions	D32		
Foshan Sunvin Ceramics Co. Ltd	H7		
GNT - Granitos do Norte	C6		
Hirsch Glass (Dalian) Co. Ltd	F42		
Landmark Surface Co. Ltd	C1		
Magratex, LDA	F40		
Mapei	E20		
Marmolesdeco	D25		
Pacific	F6		
ParCa Ltd	F51		
Pardais Granites	E45		
Paving Stock Ltd	D52		
Quanzhou Xinxing Stone Technics Co. Ltd	F36		
Repolished Restoration	H8		
Sandberg	D36		
Stone Solutions Specialists	H14		
Stonegate	C40		
Technoprofil	B35		
The Marble & Granite Centre Ltd	F32		

Polished concrete

Fila Solutions	D32		
Sandberg	D36		
Stone Solutions Specialists	H14		
Stonegate	C40		
Yubi Ceramics Ltd	D24		

Porcelain

Archiporcelain	H1		
Brachot Ltd	F20		
D Zambelis	D1		
Fila Solutions	D32		
Genex Stones London	P2		
Mapei	E20		
Marmolesdeco	D25		
MPG Stone India	C5		
Paving Stock Ltd	D52		
Porcelain4Top	E1		
S.B. Granites Ltd	B30		
Sandberg	D36		
Stone Solutions Specialists	H14		
Stonegate	C40		

Publications

Stone Specialist	F45		
Tile and Stone Journal	F46		

Restoration/conservation

Artisan Stone Supplies Limited			
T/A Gwrhyd Specialist Stone Quarry	E25		
Danyang Sail Tools Co. Ltd	F23		
Harrison Goldman Ltd	F35		
Icon (The Institute of Conservation)	C20		
Institute of Historic Building Conservation (IHBC)	C20		
Johari Stonex Industries Pvt. Ltd	D50		
Marmolesdeco	D25		
Sandberg	D36		
Society for the Protection of Historic Buildings (SPAB)	C20		
Technoprofil	B35		
Vetter UK	B20		
Zhenjiang Fewell Tools Co. Ltd	P1		

Roofing

Claude N Smith Ltd	A7		
Johari Stonex Industries Pvt. Ltd	D50		
Sandberg	D36		

Sandstone

Artisan Stone Supplies Limited			
T/A Gwrhyd Specialist Stone Quarry	E25		
BCC Stone Ltd	F24		
Brachot Ltd	F20		
D Zambelis	D1		
Fila Solutions	D32		
Harrison Goldman Ltd	F35		
Johari Stonex Industries Pvt. Ltd	D50		
Marmolesdeco	D25		
MPG Stone India	C5		
ParCa Ltd	F51		
Paving Stock Ltd	D52		

PSI Stones Pvt Ltd	E21		
S.B. Granites Ltd	B30		
Sandberg	D36		
Stone Cladding Systems (SCS)	F31		
Stonegate	C40		

Slate

BCC Stone Ltd	F24		
Brachot Ltd	F20		
Claude N Smith Ltd	A7		
D Zambelis	D1		
Fila Solutions	D32		
Harrison Goldman Ltd	F35		
Johari Stonex Industries Pvt. Ltd	D50		
Landmark Surface Co. Ltd	C1		
Mapei	E20		
Marmolesdeco	D25		
Paving Stock Ltd	D52		
Sandberg	D36		
Stone Solutions Specialists	H14		
Stonegate	C40		
The Marble & Granite Centre Ltd	F32		
Xiamen Maixee Imp & Exp Co. Ltd	F24		

Software

Moksh Corp	F53		
------------	-----	--	--

Solid surfaces

D Zambelis	D1		
Marmolesdeco	D25		
Pacific	F6		
Sandberg	D36		
Stonegate	C40		

Terrazzo

Brachot Ltd	F20		
D Zambelis	D1		
Fila Solutions	D32		
Sandberg	D36		
Stone Solutions Specialists	H14		

Trade Shows

Stona	E56		
Stone & Surfaces	F45		

Ultra-compact surfaces

D Zambelis	D1		
Stonegate	C40		

The Stone Show Seminar Theatre

in partnership with



Wednesday 7 May

11:00 – 12:00

Natural stone: the low carbon solution

This brings together some of the leading voices around the topic of using natural stone to decarbonise the built environment and explore some of the resources and studies that demonstrate the impressive sustainability credentials of natural stone.

11:00 – 11:25

Delivering structural stone projects

Amin Taha, Architect & Chairperson at GROUPWORK

11:25 – 11:45

Brick from a stone: The lower carbon choice

Marcus Paine, Managing Director, Hutton Stone

11:45 – 12:00

Panel with Susannah Streeter, Amin Taha and Marcus Paine

12:30 – 13:30

Natural Stone Awards: The Industry Choice

Each of the 2024 Natural Stone Awards category winners have gone into a public vote to find the industry's favourite project. This session will feature presentations from the architects behind some of these award-winning schemes as well as the Natural Stone Awards: The Industry Choice presentation.

12:30 – 12:45

Rhodes House, Oxford

Tom Fotheringham, Associate, Stanton Williams

12:45 – 13:05

Salisbury Cathedral, Wiltshire

Izaak Hudson, Director, Dittrich Hudson Vasetti Architects

13:05 – 13:20

Auckland Castle Faith Museum, Co. Durham

Anne Schroell, Associate, Niall McLaughlin Architects

13:20 – 13:30

Presentation of Award

Presented by George Clarke, with summary from Susannah Streeter

14:00 – 15:00

Stone Federation Student Architect Prize

Stone Federation are passionate about inspiring the next generation of architectural talent to utilise the beauty, sustainability and versatility of natural stone. The Stone Federation Student Architect Prize will celebrate those designs which demonstrate the use of natural stone to deliver a sustainable project, grounded in its locale that addresses a current challenge faced by the built environment.

14:00 – 14:45

Reviewing the entries and exploring stone opportunities for young architects

Come and celebrate the next generation of stone architects with the Stone Federation student architect prize. Hear about some of the exciting projects being developed by architectural students and the growing number of architectural degrees that are exploring the carbon savings of natural stone.

14:45 – 15:00

Presentation of Award

Presented by George Clarke

Thursday 8 May

11:00 – 12:00

Using the new standards to deliver sustainable projects

This will look at how the latest updates to the British Standards and industry best practice guidelines can help architects, designers and specifiers deliver more sustainable projects, and will cover recent revisions to paving design and internal cladding guidelines.

11:00 – 11:20

Using BS 7533 to deliver sustainable landscapes

Steven Burton (GMICE), Technical Director, Steintec

11:20 – 11:40

BS 8298 Part 5: shaping your interior project

Raul Moura da Silva, Operations Manager, EDM London

11:40 – 12:00

Panel with Susannah Streeter, Steven Burton and Raul Moura da Silva

12:30 – 13:30

The changing face of UK quarrying

Exploring how modern technologies and efficiencies have enabled the UK quarrying operation to deliver some of the lowest carbon products available globally. It will 'myth bust' some of the preconceptions that people might have about the practice of quarrying and UK quarrying and introduce some of the new products being produced by the quarries.

12:30 – 12:45

Investments and changing dialogues in UK Quarrying

Marcus Paine, Managing Director, Hutton Stone

Friday 9 May

12:45 – 13:00

More than expected: changing perceptions about the breadth of choice in UK stone

Simon Hart, Managing Director, Lovell Stone Group

13:00 – 13:15

UK stone: the environmentally friendly choice

Michael Poultney, Managing Director, Albion Stone PLC

13:15 – 13:30

Panel with Susannah Streeter, Simon Hart, Michael Poultney and Marcus Paine

14:00 – 15:00

Structural stone: the new horizon

Over the past few years there has been an increased interest in the impressive sustainability credentials of load-bearing or structural stone projects. Amin Taha's 15 Clerkenwell Close project undoubtedly brought this way of using stone to the headlines. This session will unpack some of the exciting developments around this conversation and introduces the new Stone Federation Structural Stone Guide.

14:00 – 14:30

Introducing the new Stone Federation Structural Stone Guide

David Richardson, Director, FMDC Ltd
David Ellis, Partner, Sandberg

14:30 – 15:00

Panel with Susannah Streeter, David Richardson, David Ellis and Michael Poultney

11:00 – 12:00

Uncovering the UK's forgotten stones

The UK is home to a rich and diverse geology, and this session looks at a selection of existing and proposed schemes designed to maximise the potential of this valuable resource. It also examines the commercial challenges which indigenous stone producers need to overcome to grow the UK stone market.

Chair: Jane Buxey, CEO, Stone Federation Great Britain

11:00 – 11:15

Stone sourcing challenges for historic building repair: current and future projects

Clara Willett, Senior Building Conservation Advisor, Historic England

11:15 – 11:30

Exploring the business challenges and future opportunities of bringing some of the UK's forgotten stones back to the commercial market

Giles Heap, Managing Director, CED

11:30 – 11:45

Sourcing building stone in Scotland: developing potential for indigenous stone

Imogen Shaw, Building Stone Scientist, British Geological Survey

11:45 – 12:00

Panel with Jane Buxey, Clara Willett, Giles Heap and Imogen Shaw

12:30 – 13:30

Retrofit for the future: how heritage plays a key role in achieving net zero

As part of the efforts to reduce the carbon impacts of the built environment, there is a fresh drive for clients to prioritise the retrofitting of existing buildings over demolition and rebuild. This session will explore some of the key topic around this conversation.

Chair: Clara Willett, Senior Building Conservation Advisor, Historic England

12:30 – 12:45

How traditional approaches using stone are relevant in the modern, low-carbon conversation

Edward Lewis, Practice Director, Donald Insall Associates

12:45 – 13:00

The use of indigenous stone: researching embodied carbon of slate

Soki Rhee-Duverne, Building Conservation Advisor, Historic England

13:00 – 13:15

The Birkin Building: a net zero retrofit exemplar

Becky Valentine, Co-owner, Sustainability & Building Health Consultant, Spenbeck Ltd

13:15 – 13:30

Panel with Clara Willett, Edward Lewis, Soki Rhee-Duverne and Becky Valentine

14:00 – 15:00

Emerging Talent Award: celebrating and inspiring the next generation of stone industry talent

Alongside the presentation of the Emerging Talent Award, this session will explore what the industry is doing to invest in the next generation.

14:00 – 14:40

Panel

Following the presentation about Stone Federation's work to develop a structural stone code of practice, this panel discussion will gather some of the leading voices from architecture, structural engineering and quarrying to discuss these developments.

Adrian Attwood, Chairman, DBR Ltd & President, SFGB

Nigel Gilkison, Senior Manager, Head of Construction & Stonemasonry, Building Crafts College

Bernard Burns, Director of Business Development, Szerelmey

14:40 – 15:00

Awards presentation

Meet the speakers



Adrian Attwood
Chairman, DBR Ltd &
President, SFGB



Bernard Burns
Director Of Business
Development, Szerelmey



Steven Burton (GMICE)
Technical Director,
Steintec



Jane Buxey
CEO, Stone Federation
Great Britain



George Clarke
Architect, Television
presenter, Campaigner
and Educator



David Ellis
Partner,
Sandberg



Tom Fotheringham
Associate,
Stanton Williams



Nigel Gikison
Senior Manager, Head
of Construction &
Stonemasonry, Building
Crafts College



Simon Hart
Managing Director,
Lovell Stone Group



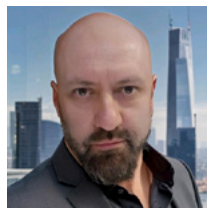
Giles Heap
Managing Director,
CED



Izaak Hudson
Director, Dittich Hudson
Vasetti Architects



Edward Lewis
Practice Director, Donald
Insall Associates



Raul Moura da Silva
Operations Manager,
EDM London



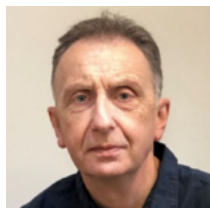
Marcus Paine
Managing Director,
Hutton Stone



Michael Poultney,
Managing Director,
Albion Stone PLC



Soki Rhee-Duverne
Building Conservation
Advisor, Historic England



David Richardson
Director,
FMDC Ltd



Anne Schroell
Associate, Niall
McLaughlin Architects



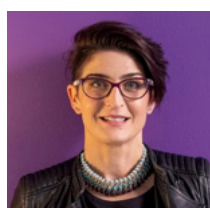
Imogen Shaw
Building Stone Scientist,
British Geological Survey



Susannah Streeter
Broadcaster &
Conference Host



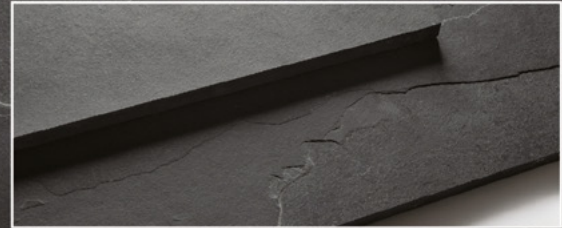
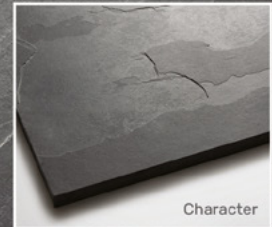
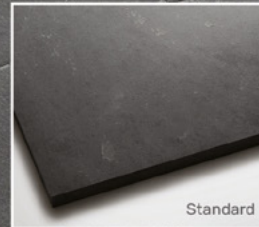
Amin Taha
Architect & Chairperson
at GROUPWORK



Becky Valentine
Co-owner, Sustainability
& Building Health
Consultant,
Spenbeck Ltd



Clara Willett
Senior Building
Conservation Advisor,
Historic England



PREMIUM BLACK BRAZILIAN SLATE PAVING

Brazilian slate is prized for its durability, versatility and natural beauty.

Choose Standard or Character Riven Paving for contemporary or traditional projects.

Large stocks for quick delivery • Best trade only prices • Full range of sizes and thicknesses

Register to see stock prices and special offers at tradepricestoneltd.co.uk



For expert advice, call **01423 223273**
or email sales@tradepricestoneltd.co.uk



See us on
stand C40

Proven, trusted, guaranteed.

Visit the Stonegate stand to find your
reliable partner every step of the way
throughout your journey in stone

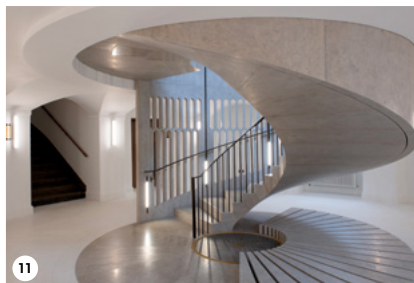
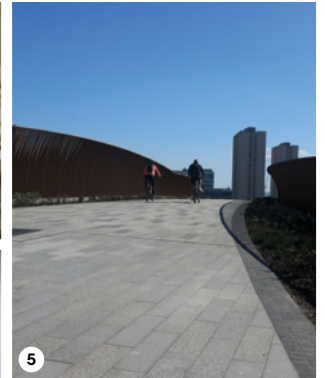
7 - 9 May 2025
ExCeL, London

Book your free
consultation



Natural Stone Awards 2024

Visit the Gallery on **Stand E26** to view all the projects from the Stone Federation's recent Natural Stone Awards.



- | | |
|---|---|
| 1 Lucent W1, London | 8 18-20 Greycoat Place, London |
| 2 Magdalen College Chapel, Oxford - West Door | 9 The British Normandy Memorial, France |
| 3 Private Chapel, Suffolk | 10 The National Portrait Gallery, London - Flooring |
| 4 Private House, Surrey | 11 Rhodes House, Oxford |
| 5 M8 Footbridge, Glasgow | 12 Primark - The Bank Buildings, Belfast |
| 6 St. John's Cloisters, Oxford | |
| 7 Auckland Castle Faith Museum, Co. Durham | |

the
**Industry
Choice
Award**

Join us at the **Stone Show Seminar Theatre** from 12:30pm on Wednesday 7 May as we reveal the **Industry Choice Award** as voted for by the stone industry; chosen from the individual award-winners from each category of the Natural Stone Awards.

Meet the shortlist

Join us on Friday 9 May to see who made the final five!

We've been delighted by the response to our **Emerging Talent Awards** receiving nominations from across the industry, with submissions reflecting the contribution of a wide range of entrants.

The Awards are about recognising and rewarding the achievements of those at the beginning of their

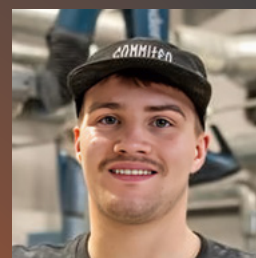
career in the sector and form part of the seminar session **Emerging Talent Award: Celebrating and Inspiring the Next Generation of Stone Industry Talent** from 2pm on Friday 9 May, and culminates with the awards presentation.



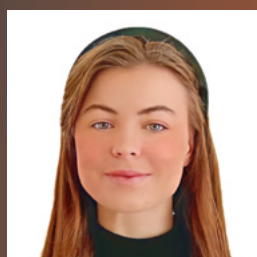
Tom Bradbury
Operations Director
Stone Industry Group Ltd



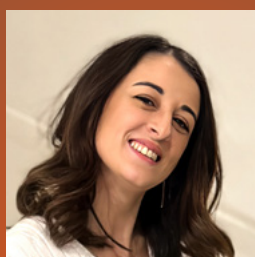
Barney Murray
Dry Stone Waller
Barney Murray



Lewis Elder
Apprentice Stonemason
Cubby Construction



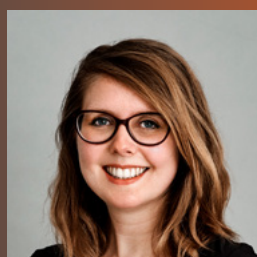
Indiana Hoare
Business Development Manager
Stonegate Tooling



Angelica Zambelis
Technical Support Manager
D Zambelis



Ben Sainsbury
Stone Workshop Manager
FDC (UK) Ltd



Lisa Nunn
Senior Geologist
FMDC



Adam Lithauer
Director
Vetro Tooling Ltd



Sophie Heather-Warner
Management Trainee
Meister Masonry



Ritesh Musale
Assistant Surveyor
Meister Masonry



James Digger
Stonemason
St. Pauls Cathedral



QUARTZ HUB



Arabes-catta Oro from £115.23/m²



Taj Mahal from £105.47/m²



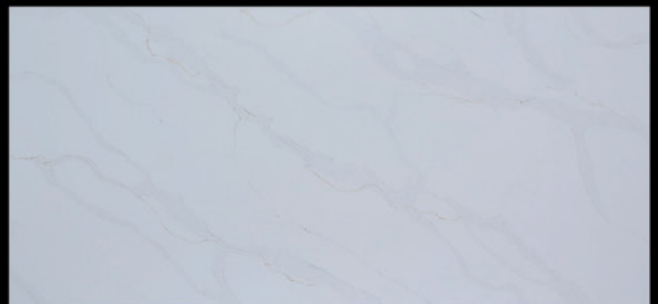
Black Marquina from £105.47/m²



Calacatta Aurous from £103.52/m²



Calacatta Light from £97.66/m²



Calacatta Platinum from £103.52/m²



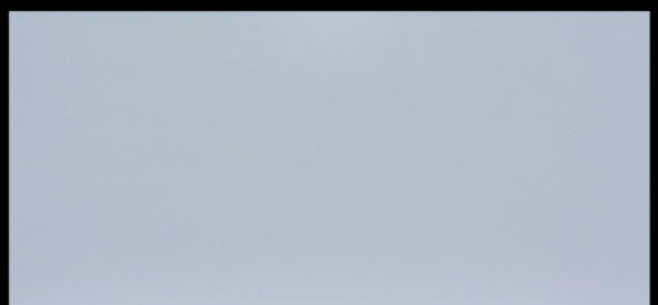
Carrara Classic from £74.22/m²



Carrara Michelangelo from £85.94/m²



Carrara Sky from £78.12/m²



Ultra White Shimmer from £74.22/m²

NEW FULL BODIED CERAMIC RANGE IN STOCK NOW
available for immediate dispatch from our West Midlands warehouse



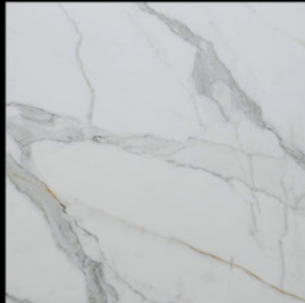
Arabesque 20mm £600 per slab



Celeste White 20mm £600 per slab



Roma Gold 20mm £600 per slab



Statuario Oro 20mm £600 per slab



All ceramic is FULL BODIED

UK based suppliers of engineered quartz and ceramic slabs to the trade throughout mainland UK

Over 30 years' experience in the industry

- ▶ Quick and Reliable Express Delivery Service
- ▶ FREE delivery available to mainland England, Scotland and Wales
- ▶ Discounts for cash on delivery and flexible sale or return service available
- ▶ 100% confidentiality
- ▶ All slabs 3200mm x 1600mm Jumbo size
- ▶ No quibble life-time warranty on all slabs

Based in the West Midlands, Quartz Hub supplies engineered quartz and ceramic slabs to the trade across the UK.

Their friendly team are on hand to look after all of your procurement needs. Each slab is supplied unbranded so you are able to brand them and add them into your company range if you choose to do so.

Orders are quickly dispatched using their 4-tonne gantry crane onto one of a fleet of available vehicles capable of carrying payloads of up to 28 000kg. HIAB lorries are also available upon request.

Quartz Hub offer an Express Delivery service around the Midlands and surrounding areas with next day delivery often being available.

Please contact us for samples.



Quartz Hub Ltd

Unit C, Atlas Trading Estate, Wolverhampton, West Midlands, WV14 8TJ

Tel: 01902 957775 | WhatsApp: +447834374181 | info@quartzhub.co.uk | www.quartzhub.co.uk

Exhibitors A-Z

Aquacut Ltd

D55

Unit 4A, Stretton Distribution Centre
Warrington
WA4 4QT
01565 750666
aquacut.co.uk

Aquacut has a dedicated team of craftsmen with decades of experience fabricating a wide range of building materials such as porcelain, stone, metals, glass, and composites to create functional and beautiful building finishes. The company has completed thousands of bespoke commissions installed in clients' properties including airports, large retail outlets, showrooms, large hardscape projects, hotels, office complexes, food and coffee chains, and domestic properties.

Archiporcelain

H1

15 Northfields Prospect
Northfields
London
SW18 1PE
+39 347 4553 849
ec1progetti@gmail.com
archiporcelain.co.uk

Archiporcelain is an agent for some of the leading Italian manufacturers of porcelain tiles and paving. With 25 years' experience, the company can help you select the right product to grow your revenue and profits.

Arcturus Stones

F27

71-75 Shelton Street
London
WC2H 9JQ
0770 6869 836
info@arcturusstones.com
arcturusstones.com

Arcturus Stones specialises in high-quality French limestone, offering sustainable stone solutions for UK projects. For architects and designers, the

premium French limestones, sourced within 500 miles of London, reduce your project's carbon footprint while meeting sustainability goals.

For stone contractors and masons, the company offer extensive expertise in French quarries and have direct relationships with quarry masters and factories ensuring you get the right limestone on time and hassle-free. For heritage and restoration projects, the company supplies authentic Caen limestone and carefully selected alternatives to unavailable British stones, perfect for conservation work.

With unmatched knowledge of the French stone industry and a commitment to responsible sourcing, Arcturus Stones help you achieve excellence in design and construction.

Artisan Stone Supplies Limited T/A Gwrhyd Specialist Stone Quarry

E25

Gwrhyd Specialist Stone Quarry
Gwrhyd Road,
Rhiwfawr
Swansea
SA9 2SB
01639 830 650
sales@specialiststone.com
specialiststone.com

Gwrhyd Pennant sandstone is quarried on the hills looking out over the Black mountains into the heart of Wales. It is one of the most beautiful stones available in the UK and its natural colour variations enhance any setting. The stone is fashioned at the quarry to your individual requirements using both traditional and modern production techniques. Each stone is produced to the highest quality and environmental standards so you can be sure that you are using the very finest of building materials.

ASM Supplies Ltd

B40

Building 101
Aviation Business Park West
Viscount Road
Christchurch BH23 6NW
020 3011 0622
info@asmsupplies.co.uk
asmsupplies.co.uk

Advanced Stone & Masonry Supplies (ASM) is a leading distributor and manufacturer of speciality products used primarily in the tile, natural stone and paving industries, within the UK and across Europe.

BCC Stone Ltd

F24

146 New London Road
Chelmsford
Essex
CM2 0AW
07785 526 060
bcc-stone.co.uk

With years of industry experience and trusted partnerships with manufacturers in China, as well as established supply networks in Vietnam, Turkey, and Italy, BCC Stone delivers an exceptional selection of premium stone products.

From its Chelmsford warehouse, the company stocks cultured stone and granite paving for prompt nationwide delivery. BCC offers a wide range of high-quality materials, including marble, limestone, quartzite, travertine, cultured stone, and onyx. Specialised services also include cut-to-size pieces, tiles, pavers, mosaics, honeycomb backing, dimensional façades, custom-carved 3D elements, and hand-crafted sculptures.

At every stage, from sourcing and quality control to reliable delivery, BCC Stone upholds the highest standards to ensure exceptional results. Its dedicated team works closely with builders, designers, and homeowners, offering expert guidance on pricing, design, and project timelines to provide a seamless, customised experience.



HARDSCAPE
PRODUCTS

Commercial Stone & Paving for Inspirational Spaces

enq@hardscape.co.uk 01204 565 500



By carefully repurposing and re-cutting the existing heritage sandstone, Hardscape helped this revitalisation project maintain the character and authenticity of the Quadrangle, sustainably blending the new installation seamlessly with its historic surroundings, with minimal environmental impact.



The Old Quadrangle, Manchester University

Client: **The University of Manchester**

Landscape Architects: **Ileriad Ltd**

Architects: **Wilson Mason LLP**

Contractor(s): **RECOM Solutions Ltd,
CS (Civils and Groundworks) Ltd and
MBC Building Contractors**

Civil Engineers: **WML Consulting**

Exhibitors A-Z

Brachot Ltd

F20

Unit 1, Brook Park
Saltbrook Road
Halesowen
B63 2QJ
01384 564 315
info.halesowen@brachot.com
brachot.com

Brachot extracts, produces and distributes landscape and surface materials in natural stone and blended materials. With its 20 quarries, 7 production sites and 15 distribution centres across Europe and Africa, Brachot has the entire production process in its own hands: from extraction to sawing and processing to distribution. This creates endless possibilities for the production of blocks, slabs, tiles and accessories for indoor and outdoor applications in natural stone and blended materials.

Brachot and its family members are firmly united by their focus on innovation. They continuously come up with new possibilities and applications, both in production and distribution. State-of-the-art machines and techniques enable Brachot to work faster and to ensure higher quality and greater sustainability. As a result, Brachot has become an internationally leading name in the world of natural stone and blended materials.

Ceramique International Co. Ltd

F25

WB5101 Yong Li Da Plaza
No 128 Ji Hua West Road
Foshan
Guangdong, 528000
China
0086 757 82535387
kemio.com.cn

Kemio Ceramics engages in the independent research and development of high-end porcelain tiles. Since its establishment, adhering to the international vision of the parent company,

the company has actively introduced the design concepts of Italian tiles, explored advanced production technology, constantly enriched the colour and specifications of products, and improved the supporting products.

Claude N Smith Ltd

A7

Collyweston Slate Mine
Slate Drift Industrial Estate
Slate Drift
Collyweston
Stamford
Lincolnshire
PE9 3PG
01780 444 627
claudesmith.co.uk

Suppliers of Collyweston Stone Roofing Slate from the only working Collyweston slate mine.

D Zambelis

D1

42-44 Cutlers Road
South Woodham Ferrers
Essex
CM3 6XJ
01621 742577
sales@dzambelis.co.uk
dzambelis.co.uk

D Zambelis is excited to return to the show not just to showcase our latest innovations but to connect with the customers who have supported the business over the years. This year, the focus is on creating a welcoming space where to meet and thank clients, share industry knowledge, and discuss the exciting future developments.

The stand will feature an impressive display of tooling, highlighting the newest additions to our range. Back by popular demand, there will be a SAIT abrasive raffle, following the great success of the 2023 show. Additionally, its interactive screens have been redesigned and upgraded to two displays, ensuring a seamless and engaging experience for all visitors.

To offer deeper industry insights, representatives from leading Italian manufacturers will be present, ready to answer any questions and provide expert guidance on latest machinery and consumables.

Dal Prete

D55

Unit 10A, Palatine Industrial Estate
Causeway Avenue
Warrington
WA4 6QQ
ferrariyecigariniuk.co.uk

As the exclusive UK distributor of Ferrari e Cigarini and Dal Prete machinery, Ferrari & Cigarini UK, a division of Aquacut Ltd, specialises in the design and manufacture of machines and production plants for those operating in the porcelain, stone, brick and glass industries. It offers a wide range of machines from on-site cutting and profiling to large industrial machines, including Dal Prete's industrial waste and recycling installations.

Danyang Sail Tools Co. Ltd

F23

Building A5-3
Tiangong Industrial Park
Danyang Economic Development Zone
Zhenjiang
212300
China
+86-18362034468
460993579@qq.com
saildia.com

Danyang Sail Tool Co. Ltd was established in 2021 and is a company engaged in the research and development, production, and sales of various diamond tools.




GLOBAL QUARTZ

SHAPING ELEGANCE, **ONE SURFACE AT A TIME**

Where craftsmanship meets
timeless beauty



Scan for website

 Visit us at The Landscape Centre, Leydenhatch Lane, Swanley, BR8 7PS

 www.globalgranite.co.uk  sales@globalgranite.co.uk  01322 660550

Exhibitors A-Z

Donatoni TWIN
S4 Q CNC bridge
saw with D-Inside
interface



Develli E46

Unit 3 Reads Farm
Dunmow Road
Ongar
Essex
CM5 0NT
0208 150 6801
info@develli.co.uk
develli.co.uk

Develli may be a new name, but our roots run deep. Founded in 2025, but building on 70+ years of stone expertise, we offer premium marble, granite and onyx from quarries around the world. Located in Ongar, Essex, we are committed to offering quality, variety, and unparalleled service. Visit our stand to explore our unmatched selection and discuss your next project.

Dimpomar C2

Herdade da Vigaria
PO Box 6
Vila Vicosa
7160-909
Portugal
00351 268 408128
dimpomar@dimpomar.com
dimpomar.com/en/

Dimpomar is one of the leading worldwide players in the stone business with 40 years of experience from quarry to project, shaping nature into architecture and lifestyle. It offers four decades of knowledge in natural stone

from Portugal and around the world. It has two generations of craftsmanship, technology, commitment and hard work to its name.

Donatoni Macchine SRL C30

Via Napoleone
14, Sant'Ambrogio di
Valpolicella
Verona
Veneto
37015
Italy
01753 378 715
office@stoneautomation.co.uk
donatonigroup.com/en/

Donatoni Group – Stone Tech Creators is a manufacturer of CNC and bridge saw stone cutting machines. The philosophy is to provide customers with the experience and passion it has accumulated over 60 years of working in the marble and stone industry. Experience and innovation at your service. Customer satisfaction is the main goal.

At the Stone Show it will be demonstrating its software interfaces and the ease with which operators can program and use these machines. The team will be on hand to take you through the full Donatoni offering: bridge saws, CNC work centres, waterjets, high-productivity cutting lines, polishing and calibration machines, automated slab

handling and management systems, and robots.

Quality and technology, all made in Italy, supported by a team of technicians, engineers, and developers.

English Stone Forum C20

Channel Business Centre
Ingles Manor
Castle Hill Avenue
Folkestone
Kent
CT20 2RD
01308 856123
englishstone.org.uk

English Stone Forum, with Stone Federation Great Britain as its secretariat, encourages greater public interest in and awareness of the stone-built heritage of England and the threats it faces.

FILA Solutions D32

Third Floor East
12 Bridewell Place
London
EC4V 6AP
0773 3895035
filaUK@filasolutions.com
filasolutions.com/eng

FILA, a third-generation, family-owned company, has been taking care of surfaces for over 80 years. A leader in professional surface care solutions for natural stone, porcelain, ceramic, wood, LVT, concrete and terracotta, FILA boasts a cutting-edge R&D laboratory and a consolidated commitment to the environment. With headquarters in northern Italy and 6 international branches in the United States, France, Spain, Germany, the UK and the Emirates, FILA products are sold in more than 100 countries. Today, over 240 floor and wall covering manufacturers recommend FILA because its products are safe, create low environmental impact and really work – every time.



NEOLITH
touch.feel.live

RAPOLANO / Natural Touch finish

TRUE INNOVATION BEGINS WITH SUSTAINABILITY

A revolutionary and innovative architectural surface
with superior technical characteristics made of natural raw materials.
It is synonymous of quality, design, and functionality.

NEOLITH.COM

Exhibitors A-Z



Genex Stones
supplies marble to
projects worldwide

Foshan Ansheng Building Material Co. Ltd

E6

Room 1901, 1902, 1903
Jicheng Financial Center
No. 29, Fuhua Road
Dongping Community
Lecong Town
Shunde District
Foshan
Guangdong, 528300
China
0086 757 8227 8016
ansenstone.com

Ansen Stone is located in Foshan, Guangdong Province, southern China. It is an enterprise focusing on the R&D, manufacturing and comprehensive services of quartz providing large slabs, cutting size, OEM, etc. In 2023, the company developed a new series of silica-free and printed quartz stone, and regularly launches new products to meet the needs of many different markets, selling to more than 30 countries.

Foshan Sunvin Ceramics Co. Ltd

H7

A3 Hall, International
Ceramics Exhibition Center
Foshan
Guangdong
528000
China
0086 757 8327 9176
sunvin.com.cn

Offering an unrivalled service, Sunvin is a leading fully licensed export agency based in China. Its success is based on a reputation for excellence in quality and design, product development and sourcing of tiles destined for export. It is committed to providing discerning clients with a one-stop service of the highest standards through dedicated and experienced staff.

Genex Stones London

P2

Unit F, Western Trading Estate
Park Royal
London
NW10 7LU
0203 161 3785
sales@genex.uk
genex.uk

Established in Italy in the late 1970s, Genex has supplied millions of square metres of marble to projects worldwide. Genex Stones has been operating in the UK since 2022, specialising in the wholesale distribution of premium natural stone to fabricators and contractors.

Through its direct relationships with quarries and suppliers globally, it offers expert consultation, quarry visits, and block selection services. From sourcing raw blocks to processing them into high-quality slabs, it ensures a seamless journey from quarry to our warehouse in Park Royal, London.

With over 50 years of experience in the natural stone industry, Genex is committed to delivering exceptional value to every project.

Gestra CZ

B45

Tis 16
Dobruška
518 01
Czech Republic
+420 494 665 675
info@gestracz.com
gestracz.com

Since 1992, Gestra has been a reliable manufacturer of stone-splitting machines and accessories. The focus is on creating robust and intelligent designs that help you expand your stone business.

The main range of splitting machines includes:

- Paving stone splitters (43-63 tonnes)
- Building stone splitters (100-180 tonnes)
- Large stone block splitters (240-850 tonnes)
- Cut stone slab splitters (43-600 tonnes)
- Concrete block splitting lines.

It can provide splitters for various sizes and types of stone, from mosaic pieces to granite blocks up to two-metres wide.

GNT - Granitos do Norte

C6

Av. Principal N1115
Bem Viver
Marco de Canaveses
4625-070
Portugal
00351 255 588 770
geral@granitosdonorte.com
granitosdonorte.com

With over 25 years of experience in the extraction, transformation and trading of ornamental rocks and granite products, GNT - Granitos Do Norte has implemented continuous improvement in its processes, always looking for the perfect balance between tradition and innovation.

Guangdong Bosun Stone Co. Ltd

H10

International Stone City
Silao Town
Yunfu City
Guangdong Province
Yunfu
527300
China
86 1341 799 6488
bosunstone.com

Established in 2016, Guangdong Bosun Stone Co. specialises in the production and sale of quartz. With a construction area of approximately 50,000 square meters, it is one of the largest quartz production bases in China.

Guangzhou Vidastone Co. Ltd

D23

Rm 2210
Poly-Plaza Clover Phase 1
No 9, Huaqiang Road
No 503 Gaolin Middle Rd
Guangzhou
Guangdong
510000
China
0086 020 3766 0684
quartzstone.com.cn

One of the leading manufacturers of artificial quartz stone in China since 2006, the company supplies more than 100+ stylish colours of the highest quality.

Harrison Goldman Ltd

F35

Airport House
Purley Way
Croydon
Surrey
CR0 0XZ
020 8689 4777
info@harrisingoldman.com
harrisingoldman.com

Harrison Goldman Ltd is an independent stone consultant and design engineer company. Let's talk natural stone; think Harrison Goldman for technical services and design: fixings, cladding, internal lining, flooring, CAD drawings, masonry and paving, stone selection, condition survey. Harrison Goldman can help you use stone with confidence, new build, refurbishment and heritage restoration.

The company has won awards for Auckland Castle Faith Museum, Co. Durham and were commended for 80 Bond St, London and the Natural Portrait Gallery, London, at the Stone Awards 2024.

Hirsch Glass (Dalian) Co. Ltd

F42

Rm. 403, 5# Building
No. 99 Northeastern Road
Shahekou District
Dalian
Liaoning
116021
China
+86-0411-84547058
spectrumquartz.com

Inspired by nature, the Spectrum Quartz collection features a carefully curated selection of stunning designs crafted to mimic the beauty of natural stone. Engineered

to withstand daily life and use, the surfaces provide a resilient and affordable solution for any project. With innovative manufacturing techniques and patented technology, Spectrum Quartz has the perfect surface for you.

Historic England

C20

The Engine House
Fire Fly Avenue
Swindon
SN2 2EH
01793 414 700
customers@historiceurope.org.uk
historiceurope.org.uk

Historic England is the lead body and government advisor about England's historic built environment. It protects and champions the historic sites that help define England as a nation, preserving the stories they tell, the ideas they represent and the people who lived and worked among them.

Icon (The Institute of Conservation)

C20

106-109 Saffron Hill
London
EC1N 8QS
020 3142 6799
icon.org.uk

Icon is a charity championing heritage conservation, and the membership body for the conservation profession. It works to protect, preserve, and promote our shared cultural heritage by cultivating skilled conservation professionals, fostering meaningful collaboration across the sector, and delivering public benefit through engagement and advocacy.

Exhibitors A-Z



Grace stone effect
porcelain stoneware
collection from
Keope Ceramiche

Institute of Historic Building Conservation (IHBC)

C20

Jubilee House
High Street
Tisbury
Wiltshire
SP3 6HA
01747 873 133
director@ihbc.org.uk
ihbc.org.uk

The IHBC is a leading professional body for built and historic environment practitioners working for the conservation, care, regeneration and future of the country's built heritage. The Institute exists to establish, develop and maintain the highest standards of conservation practice, to support the effective protection and enhancement of the historic environment and to promote heritage-led regeneration and access to the historic environment for all.

Johari Stonex Industries Pvt. Ltd (Government of India Recognised Star Export House)

D50

Stonex House
23 Keshav Nagar
Civil Lines
Jaipur, 302006
India
919 92966 4076
stonexind@gmail.com
joharistonex.com

Johari Stonex Industries is a private limited company who manufacture and export a wide variety of granite, slate and marble and have a competent team of professionals to supply the best possible product quality. The company provides stones widely used in residential and commercial settings.

Julipetra

E42

Casal Do Guerra N 72
Benedita
2475-019
Portugal
+351 262929766
geral@julipetra.com
julipetra.com

Founded in 1981, Julipetra Ltd has been dedicated to the extraction and transformation of ornamental stone. With a strong commitment to efficiency and quality, the company has become a nationally and internationally recognised reference in the Portuguese limestone industry.

Keope Ceramiche by Cristian Garofalo

D35

Ceramiche Keope
via Canale, 65
Casalgrande
RE, 42013
Italy
+39 0522997511
info@keope.com
keope.com/en

Ceramiche Keope is an Italian ceramic company of the Gruppo Concorde that studies, designs and produces porcelain stoneware floor and wall tiles. Since its foundation in 1995 in Casalgrande (Reggio Emilia), it has grown and its products are now present in more than 80 countries around the world, with an annual production of over 5 million square meters. The company offers beautifully designed solutions with high

technical performance for both outdoor and indoor environments, in commercial, public and residential spaces.

Ceramiche Keope products are easy to clean. The quality and beauty of its products are the result of investments in technology and a strong commitment to developing high-performance production. Moreover, porcelain stoneware can tolerate knocks, abrasions, fire, frost, humidity, weight, or climate and retains its colour.

Klindex Srl

H8

S.S. 05 Tiburtina Valeria km
209 + 200- 65024 Mano
65024
Italy

Manufacturer and designer of machines and equipment for floor grinding, polishing and surface preparation.

Landmark Surface Co. Ltd

C1

#2 Comprehensive Building
Block 19, Area 3 of En-Ping
Industry-Transferring Zone
Jiangmen
Guangdon
China
0086-13925925871
landmarksurface.com

Landmark source and supply natural stone, quartz and sintered stone surfaces from Chinese factories and quarries.

Market Square, Northampton

Client: **West Northamptonshire Council**

Landscape Architect: **Gillespies LLP**

Artist: **Mel Chantrey, The Fountain Workshop**

Contractors: **Stepnell Construction (Main);
Danaher & Walsh (Paving)**

the art of **creative material manipulation**

▶▶ **IMPACT ETCH**

▶▶ **LASER CUT & ETCH**

▶▶ **CNC SAW & SCULPT**

▶▶ **WATER JET**

▶▶ **SAND BLAST**

▶▶ **HAND CRAFT**



**HARDSCAPE
SURFACES**

01204 590 660
hardscapesurfaces.co.uk

Exhibitors A-Z



iCON iCS50
robotic layout Pro
package from Leica
Geosystems

Leica Geosystems Ltd C30

Hexagon House
Michigan Drive
Tongwell
Milton Keynes
MK15 8HT
01753 378 715
office@stoneautomation.co.uk
leica-geosystems.com/en-gb

Leica Geosystems' measuring instruments are designed for the construction industry and offer the highest accuracy and reliability even in the demanding working conditions of most building sites.

At the Stone Show, visitors will have the opportunity to try out the iCON iCS50 and iCS20 digital templating tools, devised specifically for stone, glass and ceramics fabricators. The state-of-the-art measuring tools and software make digital templating simple. As its software is based on Android apps, it feels familiar and makes tools user-friendly, easy to use and quick to learn. Workflows are easily followed and remembered, even when only using the device on a project basis.

With more than 200 years of history, it is the trusted

supplier of premium sensors, software and services. Delivering value every day to professionals in surveying, construction, infrastructure, mining, mapping and other geospatial content-dependent industries, Leica Geosystems leads the industry with innovative solutions.

Magratex, LDA F40

E.N. 255 - KM 1
2, Borba
7150-999
Portugal
+351 968281524
info@magratex.pt
magratex.pt

The company was founded in 1962 to export marble, limestone and granite, mainly to the German market. Following the exploration of marble quarrying in the Estremoz region, the processing of these products started with the creation of a factory in Borba in 1982. Over the years it has supplied projects in more than 50 countries. In 2023 it was acquired by Multimármores, increasing extractive capacity in another three quarries in the marble area in Portugal.

Working with luxurious marbles from this region, such as Estremoz, Rosa Aurora, Rosa Portugal and also other exclusive Portuguese material (Trigaches and Verde Serpa) and limestones.

Mapei's UltraCare range of products will be demonstrated at the show



Mapei E20

Mapei House
Steel Park Road
Halesowen
West Midlands
B62 8HD
0121 508 6970
info@mapei.co.uk
mapei.com/gb/en/products-and-solutions

Mapei will be presenting solutions for external stone installations with a focus on porcelain pavers. Live demonstrations will showcase

products from its Profilpas and UltraCare ranges, including Profilpas PP Level Duo Maxi pedestal supports, for outdoor raised flooring, and application of UltraCare deep cleaning, protection and stain removal treatments.

Live hands-on demonstrations will include application of Profilpas raised extendable floor supports with external porcelain tiles, planks and decking; PP Level Duo Maxi pedestals offer maximum flexibility, fast installation and resistance to heavy loads and adverse weather conditions. Meanwhile, Mapei's surface care demonstrations will showcase UltraCare rust remover, UltraCare stain remover, UltraCare HD cleaner and UltraCare grout protector, as well as water-based impregnators from the range.

Full Mapei installation systems will also be on show, including substrate preparation, waterproofing, tile adhesives, grouts and sealants for use with all types of stone finishes.

Marmo Meccanica C50

Stonegate House
Unit 4 Dianthus Business Park
Common Lane
North Cave
HU15 2FT
01482 620 400
info@stonegatetooling.co.uk
stonegatetooling.com

Stonegate Precision Tooling Ltd acquired Stone Equipment International in June 2024, taking on the distributorship of Marmo Meccanica edge polishing machines in the UK.

Marmo Meccanica edge polishers are crafted with Italian excellence, born from over 50 years in the stone industry, and deliver flawless results on every job. These machines have evolved over the years, now delivering an extensive range that can solve any problem you have. Highly customisable to meet your exact needs like no other edge polisher on the market,



Marmolesdeco's
limestone veincut

these machines are efficient, durable, and incredibly user-friendly.

Combined with the expert knowledge of the Stonegate team, who know and understand your business like no other, we can assess your processes and help you build a machine that maximises spend and output. Whether you're working in a compact factory, looking to create a particular finish, or just need an upgrade, our technical specialists will help you discover the perfect machine for your requirements.

Marmolesdeco D25

2 Anthony Way
London
N18 3QT
+905 549964648
export@marmolesdeco.com
marmolesdeco.com

Marmolesdeco takes pride in sourcing and delivering the finest Turkish natural stone. From carefully selecting blocks in the quarry to cutting, processing, and distribution, the company oversee every stage to ensure outstanding quality.

Specialising in marble, travertine, onyx, limestone, mosaics, split face, and custom waterjet designs, the company cater to bespoke architectural and design needs.

Working with nearly 40 countries across Europe, the Middle East, America, Africa, and Asia, it provides high-quality slabs, blocks, and custom-cut solutions that meet international standards. It is committed to precision and craftsmanship providing both semi-finished and finished products tailored to your specifications.

Whether for large-scale projects or exclusive custom orders, Marmolesdeco is a trusted partner for superior natural stone.

Exhibitors A-Z

Britanicca Gold
one of the surfaces
available from
Modern Quartz
Stone



Modern Quartz Stone D6

Compound 1A
Pellatt Road
East Lane Business Park
Wembley
London
HA9 7RQ
0208 0501574
07483 331138
07483 331141
info@modernquartzstone.
co.uk
modernquartzstone.co.uk

Modern Quartz Stone is a reputable supplier of premium quartz, sinks, and faucets, catering exclusively to stone fabricators across the UK. The company is strategically located in North Wembley, enabling it to efficiently serve clients nationwide.

The company delivers exceptional quality products, backed by an industry-leading 15-year warranty on quartz surfaces (terms and conditions apply). This commitment to excellence has led to a loyal customer base, and pursuit of excellence in every aspect of the business.

Moksh Corp F53

#1203, Pushpak Landmark
Anand Nagar Road
Prahlaad Nagar
Ahmedabad
Gujarat
380 015
India
+1-301-252-2673
+91-99786-02779
info@mokshcad.com
MokshCAD.com

Moksh is a one-stop solution service provider for stone fabricators and allied industries with more than 20 years of experience with a team of 450+ with resources in over 15 different countries.

MPG Stone India C5

38 R, Model Town
Rewari
123401
India
+91 1274 225518
+44 752 064 1628
info@mpgstone.com
mpgstone.com

For over 35 years, MPG Stone has been a global leader in natural and engineered stone. Its product range encompasses a diverse array of materials, including sandstone, limestone, granite, marble, slate, porcelain, and quartz. Every piece is crafted using state-of-the-art technology and sourced ethically from raw materials. They company is not just a retailer but craftsmen

committed to producing the best and highest-quality products.

We create products that fit seamlessly into unique spaces while ensuring functional yet timeless designs. We can help you transform your home into a calming haven or transform your space into a vibrant environment for the office or commercial area.

It is our commitment to providing our clients with premium service, quality and on-time delivery, combined with the experience of our staff that has maintained our track record over many years using numerous stockyards across the UK to support our clients.

It is our commitment to source and practise sustainability to strengthen and support a global community and provide the highest quality natural stone products.

MVC - Portuguese Limestones

F1
IC2 - Km 98
Ataija De Cima
Alcobaca
2460-713
Portugal
+351 913688218
geral@mvc.pt
mvc.pt/en

MVC is a natural stone extraction and transformation company which has been operating for over 25 years from Portugal's limestone capital. The company own 10 quarries and, thus, can assure a rock-solid quality control from the quarry all the way to the packaging and shipping. The company is equipped with cutting edge solutions to help shape your next big project and specialises in standard-sized tiles and slabs and cut-to-size CNC works. And also work with 24 types of stone in 12 different finishes.

600+ ROCK SOLID MERCHANTS AND COUNTING

Pangaea® Natural Stone Inc. is seeking merchants to partner with to establish a strong distribution channel across the UK.

- Canadian company established in 2004
- Sustainably manufactured in our 8,400m² state-of-the-art facility in Jaipur, India
- Reputation built on product consistency and predictability
- Maximised stone usage with no waste or rubble
- Ready for installation straight from the crate, reducing time and labour costs
- High-value product at a competitive price
- Tens of thousands of satisfied customers



LET'S TALK.

Contact us today and find out what makes us the best Natural Stone Thin Veneer on the planet.



PANGAEA®
NATURAL STONE INC.

PANGAEANATURALSTONE.COM | 1.888.801.3266 | @PANGAEANATURALSTONE



STONE GLASS

BUILDING SUCCESS ON



www.stoneandglass.com

E AND GROUP

NE MACHINE AT A TIME

LEGRINI
the stone master



bouone



lasssgroup.co.uk

Exhibitors A-Z



Suzuka quartz from Pacific

Nan'an Guangtaixiang Stone Co. Ltd **D22**

Nanlian Industrial Zone
Guanqiao Town
Nan'an
Quanzhou
Fujian
362341
China
0086-595-86817901
sales02@gtxstone.com
gtxstone.com

Nan'an Guangtaixiang Stone is a professional manufacturer and seller, specialising in various colours of artificial marble, quartz slabs and sintered stone.

Pacific **F6**

SY.NO.73/2B
National Highway 44
Nallaganakothapalli
Hosur
Tamil Nadu
635117
India
+91 82200 17422
pacific-surfaces.com

Pacific is one India's leading exporters of natural and engineered stones, boasting a monthly production capacity of 37,200m² of granite and 1 million m² of quartz slabs. Its new state-of-the-art facility, powered by Breton, utilises the latest and most advanced Bretonstone technology to produce ultra-exotic full-body super jumbo slabs. The new disruptive technology enables the company to achieve 7mm, 12mm and 15mm thicknesses with disruptive designs that can surpass expectations and redefine industry standards.

ParCa Ltd **F51**

Unit 1, Highland Cottages
Norwich Road
Stonham Parva
Suffolk
IP14 5JT
0330 1335334
info@parca-ltd.co.uk
parca-ltd.co.uk

ParCa supply a wide portfolio of materials for use in hard landscaping, with a specific focus on natural stones, which are sourced from

various locations around the globe, and can find a material solution to suit any requirement you may have.

It offers a range of BS 7533 compliant bedding and jointing materials used to lay stone and, in some cases, concrete paving. The range is manufactured in the UK by a specialist fabrication division which can design, fabricate and, in some cases, install all kinds of steel solutions, from low-level mechanical fixing systems and structural edgings to bespoke furniture, shelters down to anti-skate details.

Pardais Granites **E45**

Estrada da Zona Industrial,
235,
4575-060
Portugal
+351 918161978
pardais.com/en/home

Pardais Granites offer all kinds of products in granite for landscapes and cladding. Exclusive stones are available.

Paving Stock Ltd **D52**

20-22 Wenlock Road
London
N1 7GU
020 32393242
info@pavingstock.co.uk
pavingstock.co.uk

The company is one of the largest stockists and leading suppliers of 20mm outdoor porcelain tiles in the UK. In addition to porcelain, it offers a wide range of sandstone, limestone, granite and slate products in various sizes, shapes and colours.

Paving Stock provides exceptional customer service and offers competitive wholesale prices. Satisfaction is the top priority and it is committed to delivering premium products promptly to your doorstep.

Polimagra

D45

Zona Industrial de S. Miguel
n° 17
3620-300
Portugal
polimagra.pt

Polimagra specialises in the processing and marketing of granite products.

Porcelain4Top

E1

Gresitaliano Srl
Via Artigiano 6
Sassuolo MO
41049
Italy
+39 0536 1812745
info@porcelain4top.it
porcelain4top.it

Archiporcelain act as agent for some of the leading Italian manufacturers of porcelain tiles and paving. With 25 years' experience, the company can help you select the right product to grow your revenue and profits.

Portland Sculpture & Quarry Trust

A8

Drill Hall Gallery and Stone Work Space
Easton Lane
Portland
DT5 1BW
01305 826736
psqt@learningstone.org
learningstone.org

Portland Sculpture & Quarry Trust will be showing video footage from its Everyday Heritage Project 'Look to the Rock - Quarrymen's Stories' funded by Historic England.

Also on show will be: Drawings from stone conservation projects developed by AA Architecture students graduating this year and informed at a Portland stone day workshop delivered by the Trust at the Drill Hall on Portland; Examples of community carvings made on the Trust's one month courses funded by the UK



Shared Prosperity Fund Green Skills in stone-related crafts; Visualisations for the reconstruction of a Grade II listed archway from 81 Fleet Street donated to the Trust's project by the City of London Cooperation in collaboration with Keltbray Construction and PAYE Stonework & Restoration; Demonstration of hand carving skills for stone masonry and detailed work in collaboration with The Worshipful Company of Masons.

Prodim

D42

Lage dijk 26
BZ Helmond
5705
Netherlands
0031 492 579 050
info@prodim-systems.com
prodim-systems.com

The Proliner established a reputation of being one of the most accurate, efficient and flexible digital templating devices on the market. The Proliner is the core of every Proliner Stone package and perfect for measuring a wide variety of projects, from countertops, with or without backsplashes, to fully tiled bathrooms.

PSI Stones Pvt Ltd

E21

E-14, Sipcot Industrial Complex
Phase II, Extension I
Moranpalli, Hosur
Tamil Nadu
635109, India
+91-93798 79894
export@psistones.com
psistones.com

PSI Stones is a natural stone processor and distributor of granite, marble, slate and sandstone for kitchens, bathrooms and living rooms.

Prodim's Proliner templator package

Quanzhou Xinxing Stone Technics Co. Ltd

F36

Yuanxia Industrial Park
Shijing Town
Nan'an
Fujian
362300, China
0086-595-86088468
sunhingstones.com

Founded in 1993, Quanzhou Xinxing Stone Technics is one of the leading stone manufacturers and suppliers in China. It provides granite and quartz stone from two facilities covering more than 150,000m² and utilises state-of-the-art Italian machines.

Exhibitors A-Z

Quanzhou Zhuoshi Superhard Tool Co. Ltd F5

No. 14-15, Building C38
No. 25 Road
Chenghui International
Xiamei Town
Nan'an
Quanzhou
Fujian
362302
China
0086-13675900041
44560459@qq.com
wanshintool.com

Quanzhou Zhuoshi Superhard Tool specialises in the sale of diamond tools for stone, porcelain and construction, including diamond saw blades, diamond drill bits, diamond polishing pads, diamond cup wheels, TCT blades, etc.

Repolished Restoration H8

3 Heatherside
Baildon
West Yorkshire
BD17 5LG
0797 0940052
hello@repolished.co.uk
repolished.co.uk

Family-run Repolished Restoration is a distributor of professional flooring machines and consumables to the UK stone industry. On the stand will be a range of Klindex machines and products which will include:

- Top of the range Levighefor, floor polishing and grinding machine

- Waterfire hand-held grinding and polishing machine
- Wet and dry vacuums
- 11" oscillating machine for those difficult to reach areas
- UFO counter-top polishing machine....and much more.

With over 30 years' experience in the industry, it has a wealth of knowledge regarding stone floor applications, installation and restoration.

S.B. Granites Ltd B30

Apex Mall
614, Lal Kothi
Tonk Road
Jaipur
302015
India
+91 8955502777
+91 9314832393
info@sbgranites.com
sbgranites.com

S.B. Granites Ltd has been quarrying and processing natural stones since 1992 and today is recognised as a Star Export House by the Government of India.

It is situated in the city of Jaipur in north India close to granite, marble, sandstone and limestone quarries to facilitate selection of the best material for ever-demanding customers. It offers a wide range of products in different finishes (polished, honed, brushed, etc) in customised shapes and sizes for flooring, paving, cladding etc, and has added porcelain and memorials to its vibrant range.

On the stand will be a range of granites, sandstones, limestone, marbles, porcelain and granite memorials.

Sandberg D36

5 Carpenters Place
Clapham
London
SW4 7TD
020 7565 7000
Mail@sandberg.co.uk
sandberg.co.uk

Sandberg is an independent international consultancy that covers all aspects of stone selection, quarry assessment, stone evaluation and quality for external cladding/paving and internal lining/flooring applications.

Expert opinion is provided on in-service performance and long-term durability. Consultancy services include the review of specifications, drawings, construction detailing/interfaces, design calculations, thermal performance and buildability.

Comprehensive UKAS-accredited testing services to BS EN and ASTM standards are available in-house, as well as petrographic examination, scanning electron microscopy and microanalysis.

Other specialised services include:

- investigation and condition surveys on new and historic structures
- rope access
- dye inspection
- bespoke fixing system testing
- hard/soft body impact testing
- non-destructive radar structural surveys.



Repolished Restoration will be showing a range of equipment



VETRO
TOOLING LTD

**PROUD AGENTS
FOR DENVER STONE
MACHINERY IN THE
UK & IRELAND**

quota pro

DENVER
be clever

CALL US ON **01268 766807**

or visit our website www.vetrotooling.com
email us sales@vetrotooling.com

Exhibitors A-Z

Shandong Yande Materials Co Ltd D20

North of Yingbin Road
Economic Development Zone
Lanling Town
Linyi City
Shandong Province
277700
China
+861 3761823666
horizon@horizon-quartz.com
horizonquartzstone.com

Horizon is a quartz stone manufacturer that integrates production, research and development, and sales. It offers a wide range of products with diverse colours and styles. Notably, the company's quartz stone jade series features independently developed designs. The Calacatta series stands out with its rich variety of patterns, realistic detailing, and consistently high quality.

SKC Ltd H12

11 Sunrise Business Park
Higher Shaftesbury Road
Blandford Forum
Dorset
DT11 8ST
0125 8480188
enquiries@skcltd.com
skcltd.com

The HAZ-DUST SM-7204 personal, real-time aerosol monitor from SKC Ltd

SKC has been supplying quality air sampling products for over 60 years for the occupational hygiene,



environmental and indoor air quality professional - in fact, all that you need in both equipment and expertise for dust, gas/vapour and bioaerosol sampling. Along with its well-known air sampling equipment it offers sound and noise meters and the HAV-Sentry hand-arm vibration monitor.

The HAZ-DUST SM-7204 is a personal, real-time aerosol monitor designed for environments with silica dust, providing immediate identification of problem areas and tasks. Implement controls to reduce exposures to hazardous particulates and then use it to measure the effectiveness of controls moving forward. There's no further need for two co-located devices - one SM-7204 with built-in compensating pump and pre-weighed filter cassette simultaneously provides real-time particulate concentration readout and a filter sample for lab analysis. The SM-7204 alerts users of approaching thresholds for immediate corrective action. Designed carefully with you in mind, the SM-7204 provides the widest range, lowest detection limit, and best resolution of any personal dust monitor on the market.

Society for the Protection of Historic Buildings (SPAB) C20

37 Spital Square
London
E1 6DY
020 7377 1644
info@spab.org.uk
spab.org.uk

Offering information, publications and free, impartial technical advice on the care and repair of old buildings, the SPAB offers guidance on subjects ranging from controlling dampness in solid walls that need to 'breathe' to improving energy efficiency and the use of lime mortars.

It holds short courses and runs a unique six-month training scheme for young craftspeople. The SPAB is the UK's oldest, largest and most technically expert building conservation charity.

Spatium Petra - Granumlux E55

Estrada Municipal 6152, n°7
Corvaceira
3530-032
Portugal
00351 969317941
spatiumpetragroup.com

Spatium Petra is a conglomerate of companies in the stone market that offers extraction and processing services aimed at outdoor arrangements and finishing indoor and outdoor spaces. The company is a merger of four companies: GranumLux, Luxury Rocks and Marcant, in Europe, and Marlin Natural Stones, in Africa.

SPM - Since 1967 E40

Rua da Serrinha 1375
Alpendorada
Várzea e Torrão
4575-049
Portugal
00351 919 573 483
inquiry@spmgrupo.pt
spmgrupo.pt

With over 50 years of experience in the market, SPM - Sociedade das Pedreiras do Marco was founded in 1967 with a clear objective - the extraction, processing, and commercialisation of granite from its own quarries located in the northern region of Portugal and Spain.

The distinct attributes of the extracted raw material and its superior quality, combined with a continuous effort to improve the transformation process, enable the production of a final product with unique characteristics.

The guarantee of the final product's quality, the competence consistently

demonstrated in client negotiations, and the strict fulfilment of established commercial agreements have been decisive factors in the growing acceptance of its products in highly demanding markets, such as central and northern Europe. This has positioned SPM as a leading exporter in this industry.

Stona

E56

Federation of Indian Granite & Stone Industry
429/7, 12th Cross Rd
Sadashiva Nagar
Armane Nagar
Bengaluru
Karnataka
560080
India
+91-80-2361 2541
stona2025@figsi.in
stonaindia.co.in

Indian trade fair for stone products, tools, machinery, abrasives and sealants etc. Next event will take place in February 2027.

Stone Automation Ltd

C30

Unit 2 Stacey's Yard
Station Road
Langley
Berkshire
SL3 6DB
01753 378 715
office@stoneautomation.co.uk
stoneautomation.co.uk

Stone Automation supply stone, ceramic, porcelain and glass fabricators across the UK and Ireland with high-quality Donatoni machinery, Leica Geosystems digital templating tools, Tesimag water systems, Wodiam tooling and Slabsmith software. Each product distributed by Stone Automation has been carefully selected to help fabricators improve the efficiency and quality of their work whilst growing their businesses. As experienced fabricators, Stone Automation has used all the products we distribute and can offer an unparalleled level

of support before, during and after each purchase. If you are looking at how to improve the efficiency of your processing business particularly in the face of rising costs, then visit the stand.

Stone Cladding Systems (SCS)

F31

Westwood
Ashbourne
DE6 3AZ
01335 361000
sales@scs-stone.co.uk
scs-stone.co.uk

Stone Cladding Systems specialises in providing its own tried and tested non-combustible Aztec ventilated rainscreen system, tested to the latest CWCT standards, and partnering with Hilti for a complete solution.

Stone Federation Great Britain

E30

Channel Business Centre
Ingles Manor
Castle Hill Avenue
Folkestone
Kent
CT20 2RD
01303 856123
enquiries@stonefed.org.uk
stonefed.org.uk

Stone Federation Great Britain is the official trade association for the natural stone industry with over 100 years of experience in connecting architects, interior designers and clients with the best materials and companies as well as providing members with a wealth of resources and support.



Stone Solutions Specialists

H14

Unit 4, Horton Road
Staines-upon-Thames
TW19 6AE
0789 2710663
info@anyfloor.co.uk
stonesolutionspecialists.co.uk

Stone Solutions Specialists has a full range of Hyper Grinder and Lantania products. Get ready to elevate your projects with top-notch machinery that delivers exceptional results. Plus, experience these fantastic products first-hand by trying them out at the showroom.

The company will showcase cutting-edge floor grinding machines for marble and concrete, designed to push the limits of performance and efficiency. It will exhibit alongside Stone Solution Specialist, bringing innovation and expertise to the heart of the stone industry.

Aztec self-supporting attachment system from Stone Cladding System

Exhibitors A-Z

Sundström Safety will show it's range of world-class respiratory protective equipment



Stone Specialist

F45

stonespecialist.com

The industry magazine and digital platform for all specialists in natural stone, trade and professional.

Stonegate

C40

Stonegate House
Unit 4 Dianthus Business Park
North Cave
HU15 2FT
+44 (0)1482 620 400
info@stonegatetooling.co.uk
stonegatetooling.com

Stonegate Precision Tooling is the UK's most trusted go-to partner for all aspects of stone fabrication, consistently delivering carefully chosen and tested solutions enabling independent stone fabricators to create stonework perfection.

Its unique, field-based account management team and technical team with its wealth of hands-on experience of the machines, tooling and processes in daily use, offer insight into the problems the industry suffers from and are best placed to deliver the innovative services and solutions which will not only solve them but revolutionise your business.

The products and services are centred around making your business the most efficient it can be. Just some of

the solutions we offer include: Optimo - our CNC efficiency service, factory audits, Flexijet - the innovative laser templating tool, as well as tooling and consumables such as its unique, best-selling profile tooling range - Infinity.

If you want to transform your business and give yourself that cutting edge, then trust Stonegate to deliver for you.

Sundström Safety

D41

Fairfield
The Mile
Pocklington
York
YO42 1TW
07940 521 812
info@srsafety.se
srsafety.com

Sundström Safety design and manufacture world-class respiratory protective equipment, protecting people from contaminated air. The aim is to always design and manufacture the best and most comfortable respiratory protection equipment on the market. Today, it presents a compatible and modular product range that is flexible and adaptable to both personal comfort and the needs and requirements of the workplace.

Technoprofil

B35

960 chemin Olivier
Levis
Quebec
G7A 2N1
Canada
418 831-4422
Technoprofil.ca

For over 30 years, Technoprofil has set the standard in custom natural stone fabrication and craftsmanship. The company's mission is to bring intricate, one-of-a-kind natural stone projects to life using expertise and cutting-edge technology.

Telmo Duarte

F2

Estrada Do Casal Selao 406
Moita Negra
Fatima
2495-676
Portugal
info@telmoduarte.com
telmoduarte.com

Founded in 2003, Telmo Duarte is based in central Portugal, a region rich in limestone. The company owns its own quarries and is involved in the extraction, processing, transformation, and distribution of natural stone, both domestically and internationally.

Thanks to its partnerships with other extraction companies, Telmo Duarte offers a wide variety of products. The company actively participates in international stone fairs to showcase its products and stay up to date with market trends, ensuring it delivers the best solutions for its clients' projects.

With extensive know-how and growing experience—combined with continuous investment in advanced technology and workforce training—Telmo Duarte has established a strong presence in both national and international markets. These efforts have helped the company earn customer trust and expand into new markets.







Find us on stand C50


Configurability and convenience

Discover how Marmo Meccanica edge polishers can be **customised to your exact needs** to ensure you have the perfect machine for your factory


7 - 9 May 2025
ExCeL, London

Book your free consultation





Mandale Derbyshire Fossil Limestone



From building stone, to worktops, and everything in between

www.naturalstonesalesltd.co.uk
 01629 735507
enquiries@naturalstonesalesltd.co.uk

THE MARBLE & GRANITE CENTRE LTD.

THE EXPERTS IN NATURAL AND SINTERED STONE

View materials on our live material search engine at www.themarbleandgranitecentre.co.uk

Large Stocks of Marble, Granite, Slate and Stone.
Recently Arrived:

- Rosso Levanto
- Travertine Roman Classic
- Black Fusion
- Arabescato Corchia
- Soapstone
- Bardiglio Nuvolato
- &
- Calacatta Viola Monet



ROSSE LEVANTO



TRAVERTINE ROMAN CLASSIC, UNFILLED

Troy Wharf, Old Uxbridge Road,
 West Hyde, Rickmansworth,
 Herts, WD3 9YB
 Tel: 01895 820883




@marblegraniteuk



Exhibitors A-Z



Tesimag's Sirion water-treatment plant

Tesimag **C30**

Viale Turigliano 9
Avenza
Massa and Carrara
54033
Italy
01753 378 715
office@stoneautomation.co.uk
tesimag.com/en

Tesimag has specialised in the design and construction of industrial wastewater treatment plants, filter presses

and advanced pumping systems for over 35 years.

Explore the advanced water treatment solutions for your stone and glass fabrication workshop and building sites, plus the latest developments from Tesimag.

A dynamic company working at the cutting-edge of water technology, it continually devises customised and innovative solutions for several processing sectors including the stone, ceramics, glass, aggregates, mining and construction industries amongst many others. Its range of products and systems include complete plants for wastewater clarification, industrial sludge filtration and treatment, de-oiling plants, vehicle washing systems, stormwater treatment plants, flocculant units, filter screens, centrifugal pumps and hydraulic micro-turbines for the production of clean energy.

100-year history of innovations by SCHOCK, it is the go-to destination for high-quality sinks, taps, and accessories, offering solutions tailored to every design vision.

The Marble & Granite Centre Ltd

F32

Troy Wharf
Old Uxbridge Road
West Hyde
Rickmansworth
WD3 9YB
01895 820883
info@
themarbleandgranitecentre.
co.uk
themarbleandgranitecentre.
co.uk

The Marble & Granite Centre will be showcasing a stunning selection of both new and classic materials. Displaying natural stone in its purest and most unique form, celebrating its raw beauty, rich textures, and one-of-a-kind patterns shaped by nature over time.

Visitors to the stand will also get an exclusive look at the updated stock search engine and international stock warehouse, offering access to an incredible selection of materials from around the world.

From striking backlit natural quartzites to timeless travertines and slates, the collection offers something to suit every aesthetic and application. Whether you're working on a large-scale architectural project or a bespoke interior feature, the extensive range ensures you'll find the perfect stone to bring your vision to life.

The 1810 Company **C25**

Units 14-16 Bromfield Industrial Estate
Queens Lane
Mold
CH7 1JR
01978 660770
sales@the1810company.co.uk
the1810company.co.uk

Colourful creations and long-lasting quality – discover the innovative approach to kitchen sinks, taps and accessories outlined by The 1810 Company – a SCHOCK Group Company.

Visit The 1810 Company to see the latest innovations and timeless favourites in premium kitchen design. Experience the groundbreaking AXIX range, designed for fabricators seeking a seamless blend of luxury and functionality. Explore a varied selection of 1810 and SCHOCK products, featuring stainless steel, PVD, fireclay, and quartz composite options – a comprehensive collection to elevate any kitchen project.

With The 1810 Company's 15 years of expertise, and



AXIX Gold Brass sink and tap set from The 1810 Company

The Stone Show **F56**

stoneshow.co.uk

The show returns to ExCeL, London in May 2026 alongside UK Construction Week.

The Worktop Fabricators Federation F22

41b Beach Road
Littlehampton
West Sussex
BN17 5JA
07591 339 144
office@worktopfabricators.org
worktopfabricators.org

The Worktop Fabricators Federation (WFF) represents businesses that fabricate large format slabs for surfaces from natural stone and man-made materials. WFF's mission is to help members achieve profitability and uphold high professional standards.

WFF acts as a voice for the industry, offering education, improving standards, and promoting collaboration between suppliers, and related markets. It provides guidance to designers and installers and offers impartial advice to all trades and consumers.

Membership in the WFF signifies superior standards, quality, safety, and premium services, which may come at a higher cost due to necessary investments and infrastructure. It is important for KBB designers and consumers to recognise this distinction, setting WFF members apart from those who prioritise low prices over quality and safety.

Tile and Stone Journal F46

Unit 1, The Old Dairy
Great Danegate
Eridge Green
East Sussex
TN3 9HU
01892 752 400
tileandstonejournal.com

Tile and Stone Journal is the leading publication for all professionals in the tile and stone industries. The monthly magazine contains sector news, technical advice, industry interviews and more, covering the UK and global markets.

Tin Shing Stone Ltd E5

1/F 341 Portland Street
Mongkok
Hong Kong/China
0086 15012507628
3522429207@qq.com

Pearson sells quartz slabs domestically in the United States with factory-direct prices and has a range of niche market products in a range of thicknesses - 10mm, 12mm, 20mm and 30mm.

Vadara H3

49A Wakland Road
Halesowen
B63 3DN
0780 9162473
vadaraquartz.uk

Vadara Quartz is where artistry meets innovation in the world of quartz surfaces. Inspired by nature and crafted for modern living, Vadara's exquisite designs capture the beauty of natural stone with superior durability and performance.

Engineered for designers, architects, and homeowners, Vadara Quartz surfaces offer an elegant yet practical solution for kitchens, bathrooms, and beyond. With a commitment to craftsmanship, sustainability, and innovation, Vadara brings visionary surfaces to life—perfect for residential and commercial applications.

Vetro Tooling Ltd D26

Unit 10 Westmayne Industrial Park
Bramston Way
Laindon
Essex
SS15 6TP
01268 766 807
sales@vetrotooling.com
vetrotooling.com

Vetro Tooling have been supplying the stone and glass processing industries for decades with the highest quality tooling and machinery.

For its stone tooling division, it has partnerships with many quality tooling providers and has brought many new and exciting tooling lines to the market. This includes the K-Line range of CNC tooling with more than 95% of tools available for next-day delivery, with an in-house workshop, it can re-grind and re-spark the shape giving twice the lifetime and greater value to your investment. It is continually evolving and improving the whole stone tooling range, including the new range of Cosentino-approved tooling, ACE. This includes bridge saw blades, drills, small blades etc. It is also a proud agent for Denver Stone Machinery in the UK and Ireland. Denver has some inspiring stone machinery ranges and is excelling in technological advances over the competition.

Vetter UK B20

City Gate 2
Cross Street
Sale
Manchester
M33 7JR
enquiries@vetteruk.com
vetteruk.com

Vetter UK is an award-winning specialist stone contractor. The full-service range incorporates initial material selection, PCSA support for technical and design advice through to material sourcing, performance testing, procurement, manufacture, delivery and installation.

Utilising a range of materials to meet your requirements, the current product portfolio includes: façade and cladding solutions, urban landscaping and interior fit-out.

Exhibitors A-Z

Gold Evolution
high-performance
stone adhesive from
Waters Group



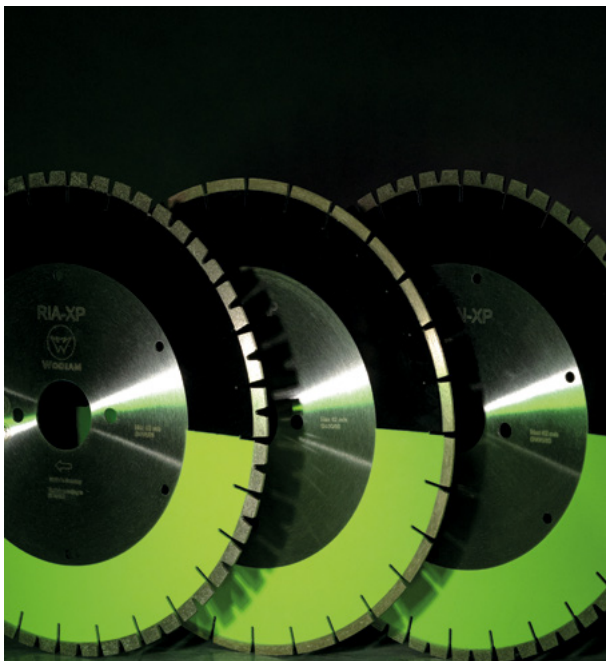
Vyomika Sales

B1

467-483/1 Burgess Park
Dilshad Garden Ind. Area
G.T. Road
Shahdra
Delhi-110095
India
+91 920 5850254
vyomika.salesco@gmail.com
vyomikasteel.com

Vyomika Sales manufactures PVD door handles, PVD screens/partitions, furniture, WPC deck flooring ensuring longevity with its sleek appearance. Its products are designed to be long lasting whilst maintaining an elegant look.

Wodiam's new XP
blades



Waters Group C24

Liskeard Business Park
Liskeard
Cornwall
PL14 3US
0800 999 47 58
info@watersgrp.co.uk
watersgrp.co.uk

Waters Group is a family-owned and run business that supplies quality diamond tooling, equipment and consumables throughout the UK and Ireland.

Wodiam C30

Rangeerweg 12
Hamont-Achel
Kempen
3930
Belgium
01753 378 715
office@stoneautomation.co.uk
wodiam.co.uk

Wodiam is a business with a passion for natural stone processing, cutting and drilling at the highest quality and fastest pace. At The Stone Show, it will be launching the new XP blades and CNC tools to the UK market.

Wodiam believe that efficiency is important for every stonemason, big or small. Delivering the same or better quality in a shorter production time reduces production costs, giving the stonemason more margin to either have a more competitive position or more profit left at the end of the ride. Either way, additional production capacity is achieved with the existing set up, without any extra investment.

In addition to the product itself, it wants to make a difference in terms of service. Using in-depth technical knowledge, it can personally assist operators on the proper application of tools. With extensive stock, we can keep delivery times very short for the most popular machines and blades.

Xiamen Dalei Stone Co. Ltd

F52

6th Floor, Gold Green Plaza
No 611 Sishui Street
Huli District
Xiamen, 361026
China
0086-592-5335700
admin@daleistone.com
daleistone.com

Dalei Quartz is committed to innovation, continuously developing proprietary formulas and processing technologies built on advanced industry standards. We consistently update our quartz product line, which features elegant, natural textures, vibrant yet soothing colours, and a quality that meets or exceeds the leading standards in the market.

Xiamen Fusion Building Material Co. Ltd

D31

Room 203
No. 99 Dianshang Dongli
Siming District
Xiamen
Fujian, 361000
China
0086 15960216419
fusion-stone.com

Since 2015, Xiamen Fusion Building Material has manufactured and exported a range of natural and artificial stone to the UK, USA, Europe, Singapore, Canada and Australia. Natural granites, marble and artificial quartz, marbles are available in a range of colours and formats.

Xiamen Maixee Imp & Exp Co. Ltd

F24

33B, Building No 2
Xiangjiang Garden
Siming District
Xiamen, 361009
China
0086 136 0609 0704
info@maixee.com
maixee.com

As a leading provider of premium stone and marble solutions, Xiamen Maixee brings sophistication, durability, and timeless beauty to every project. With over 20 years of experience, the team is renowned for exceptional craftsmanship, meticulous attention to detail, and a strong commitment to client satisfaction.

Xiamen Maixee offers a diverse selection of high-quality materials, including marble, limestone, quartzite, travertine, cultured stone, and onyx. Specialised offerings range from cut-to-size pieces, tiles, and pavers to mosaics, honeycomb-backed panels, dimensional façades, custom-carved 3D elements, and hand-crafted sculptures.

Xiamen Milestone Group Co. Ltd

D31

Lot A, Room 401
No.170 Tapu East Road
Siming District
Xiamen
Fujian
361000
China
0086 13805990339
mqquartz.com

Milestone Group has been engaged in stone production and export for more than 10 years. It offers natural granite, marble, travertine, high-end artificial marble, quartz and can undertake engineering and wholesale orders.

Xiamen Millions Building Material Co. Ltd

D31

Lot 2, Room 610
No. 522 Gaolin Middle Road
Huli District
Xiamen
Fujian, 361000
China
0086 15960299310
meridianquartz.com

Since 2012, Xiamen Millions has manufactured and marketed artificial quartz. It has a selection of marble-looking quartz designs and printed quartz in a range of colours and designs.

Xiamen Northern Stone Co. Ltd

E50

Room 2001-1
No. 72 North Hubin Road
Xiamen
Fujian, 361000
China
0086-592-5318397
xsestone.com
xsequartz.com

XSE has been in the stone industry for over 20 years. We own a factory specialising in granite and quartz, and offer more than 200 types of granite sourced from over 20 countries. Our team has extensive experience in handling large-scale international stone projects.

Xiamen Stone Epic Co. Ltd

E50

Floor 8, Zhongxin Huiyang Office
No. 59, North Hu
Xiamen
Fujian, 361000
China
0086-592-5310101
xse5@xse.cn
xsestone.com
xsequartz.com

XSE has been in the stone industry for over 20 years. We own a factory specialising in granite and quartz, and offer more than 200 types of granite sourced from over 20 countries. Our team has extensive experience in handling large-scale international stone projects.

Xiamen Zhuoshi Imp & Exp Co. Ltd

H6

Unit 23D Baofu Building
2508, Dingfong Fortune Center
No. 819 Hubin South Road
Xiamen
Fujian, 361000
China
0086-592-5168801
lucklai52@hotmail.com

Xiamen Zhuoshi specialises in producing and selling high-quality artificial stone. With an advanced production line, unique technology, and a skilled R&D and marketing team, the company offers a wide range of premium products including artificial marble, quartz stone, natural granite and marble, glass and stone mosaics, and porcelain slabs.

Yubi Ceramics Ltd

D24

Binhe East Road
Bishan District
Chongqing, 402760
China
gytiles.co.uk

Manufacturer of premium outdoor tiles.

Zhenjiang Fewell Tools Co. Ltd

P1

Room 602, H Building
No.101 Gedan Road
Dabo area
Danyang Economic Development Zone
Danyang
Jiangsu, 212300
China
+86-17805029298
info@fewelltools.com
fewelltools.com

Zhenjiang Fewell Tools specialises in the manufacture, product development and sale of stone diamond saw blades.

A New Chapter for Stone Specialist

After many successful years in print, we have made the decision that the upcoming issue of Stone Specialist will be our final printed edition. This marks an exciting new chapter as we focus on growing our digital platforms and reaching more readers online.

The way people access news and information continues to evolve, and so does Stone Specialist. Our website — www.stonespecialist.com — will continue to be updated regularly with the latest industry news, expert insights, and feature articles.

And for those who like news delivered straight to their inbox, our free fortnightly email newsletter — the Stone Specialist Bulletin — will continue to bring you key stories, updates, and highlights from across the sector.

While we may be saying goodbye to the printed magazine, Stone Specialist remains very much alive and thriving online. We're excited about the opportunities this brings to connect, share news faster, and keep delivering the content our readers value.

Thank you for your continued support — we look forward to staying in touch in this next chapter.

Don't miss out — sign up to receive the Stone Specialist Bulletin for free at www.stonespecialist.com/newsletter.

In this issue

48 News

52 The Stone Show & Hard Surfaces news

54 New perspective in New York

New York resident Christine Cole of Precision Stone Inc professes her love for the architecture of the Big Apple

58 The beauty of slowness

Zoë Wilson explains the importance of hand carved stone in a fast-paced world.

60 A day in the life

Becca Cranfield talks to fellow Women in Natural Stone member, Carolina Saboya de Toledo, design manager at EDM London for an insight into her life.

62 Building Burghley

Clare Howcutt-Kelly visits stonemasons Mick Teale and his son, Ben at one of the largest and most spectacular Elizabethan houses in the UK.

64 Out of office

66 Stone Federation news

For future editorial submissions and advertising enquiries to stonespecialist.com contact:

Hannah O'Leary
Stone and Surfaces, Sales Manager
hannah.oleary@m10group.co.uk
Direct line: 0203 225 5200 ext 681
Mobile: 07856 905915

Stone Specialist

Media 10 Ltd, Crown House, 151 High Road,
Loughton IG10 4LF

Editor
Clare Howcutt-Kelly
clare@qmj.co.uk

Managing Director
Richard Bradbury

Sales Manager
Charlotte Shacklock

Magazine Production
Pam Reddish

Subscriptions
Sue Chambers

Volume 60 Number 2
ISSN: 1356-5443

Material appearing in this journal is the subject of copyright and should not be reproduced, stored or transmitted without the permission of the publishers. Views and opinions expressed by individuals in this publication do not necessarily represent those of the publishers.

Printed in the UK by Buxton Press Ltd



54



60



Photo Sarah Zipfeli

58



62

Stone and Glass Group welcomes Darren Bill

STONE AND GLASS GROUP

Stone and Glass Group is delighted to announce the appointment of Darren Bill as its new stone division manager. Darren joins from Roccia Machinery and brings a wealth of experience, an outstanding

reputation, and a lifelong passion for the stone industry.

With years of hands-on expertise and a genuine understanding of the market, Darren has built his career on delivering real value to

customers and forging strong, lasting relationships across the industry. His move to Stone and Glass marks a significant milestone as the company continues to expand its presence in the stone sector.

This appointment is not just about experience, it's also about trust. Darren is a personal friend of CEO, Phil Birchall, and someone whose integrity, work ethic, and industry insight has long been admired by the team.

"Having Darren join us is a proud moment for me, both professionally and personally,"

said Phil Birchall. "He's someone I've respected for many years, and I know first-hand the value he brings—not just in terms of technical knowledge, but in the way he builds rapport and supports customers. Darren's arrival is a major boost for the business and for everyone we work with. Darren's appointment reflects our deep commitment to the stone sector. With him at the helm of our Stone Division, customers can expect enhanced support, honest advice, and a genuine partner to help them grow."

DBR (London) awarded prestigious Royal Warrant



DBR (London) Ltd (DBR), one of the UK's leading heritage contractors, has announced it has been granted a Royal Warrant by Appointment to His Majesty the King, recognising its longstanding provision of historic building conservation services to the Royal Household.

For centuries, Royal Warrants have been granted to companies that demonstrate

outstanding service, quality, and craftsmanship. This achievement reflects DBR's decades-long track record of excellence, during which it has delivered numerous historic building conservation projects for the Royal Household.

DBR is among the first royal warrant holders announced by King Charles III and Queen Camilla. To qualify, companies must have provided

regular, direct, and high-quality services to the Royal Household for at least five years while also meeting rigorous sustainability standards.

DBR's expert team of craftspeople and project managers have worked on some of the UK's most significant heritage sites, including Buckingham Palace and the restoration of The Elizabeth Tower (Big Ben).

Their exceptional skill, precision, and commitment to quality set them apart, not only in their craftsmanship but also in their dedication to public engagement and communication.

As a Royal Warrant holder, DBR has the right to display the Royal Arms, symbolising its commitment to the highest standards of historic building conservation.

Commenting on the appointment, DBR's executive director, chairman & Warrant Grantee, Adrian Attwood ACR, said, "Receiving this Royal Warrant is more than an honour; it's a testament to the unwavering dedication, craftsmanship, and expertise of our entire team. We take immense pride in our role in preserving the UK's built heritage - whether for the Royal Household, the Palace of Westminster, Blenheim Palace, or any of the historic buildings we are privileged to work on. This recognition reinforces our commitment to excellence and our mission to protect and restore the nation's landmark assets for future generations to cherish and enjoy."

To find out more about DBR and its work conserving and upgrading some of the UK's most treasured heritage assets visit: dbrlimited.com

Italcer receives EU approval for pioneering industrial plant

Italcer, a benefit corporation and design hub for Made-in-Italy ceramics led by CEO Graziano Verdi, and backed by funds Mindful Capital Partners, Miura Partners, and Capital Dynamics, has received approval from the experts of the European Commission's LIFE Subprogramme Climate Action. This is a funding program for environmental and climate action projects, for its patented plant that will eliminate CO₂ from ceramic production processes.

For the first time, an industrial plant will not only eliminate CO₂ emissions created during production but also transform pollutant waste agents into raw materials for use in various industrial sectors, helping to reduce environmental impact. As a result, the process becomes complementary to ceramic production.

It is estimated that the first pilot plant, which Italcer will build in Sassuolo (Modena), once the financing of approximately €6 million is approved, will not only eliminate all emissions produced to date, totalling around 5,500 tonnes of CO₂ per year, along with other fumes and gases, but will also allow for an additional environmental savings of 3,700 tonnes of CO₂ per year.

The particular design of the system allows it to be applied in many industries that currently use fossil fuels, making the patented technology scalable and impactful.

The plant, which has passed the European Commission's assessment, is capable of eliminating CO₂ and other air pollutants from production processes, converting them into value-added products that can be used as pure secondary raw materials for other uses (such as precipitated calcium carbonate, calcium nitrate, and calcium sulfate and sulfite).

The calculation considers the entire production cycle, including emissions associated with the manufacturing of high-



quality products, compared to traditional methods of producing them.

This innovative process, which has already received a patent for industrial invention and is the result of approximately €2 million invested by the company in research and development over recent years, uses 'Industry 4.0' solutions that allow constant and automated production control with a positive environmental impact.

Graziano Verdi, CEO of Italcer Group, explained: "We are thrilled to announce that our Group has received praise from the European Community

for this important innovation. This recognition highlights our commitment to sustainability. Italcer Group's environmental policy is based on a strategy that aims for realistic decarbonisation of production processes. We have long been committed to promoting the development of a circular economy, seeking to reuse waste materials from processes and turning them into raw materials for other industrial uses. We plan to invest an additional €50 million over the next five years to create an industrial-scale plant that we estimate will generate €80 million in additional revenue over the

next seven years thanks to the application of this patent, considering both the sale of secondary raw materials and savings on CO₂ taxes".

This innovation has received approval from the experts of the LIFE Subprogramme Climate Action, who awarded the project 69 points, well above the required threshold of 55 points. The plant also stands out for its very low energy impact, as it leverages exothermic reactions that occur spontaneously, reducing energy needs and improving overall efficiency.

Italcer Group, which expects to close 2025 with a turnover of approximately €380 million, has always been committed to the challenge of decarbonising the production process. The company has invested in developing this groundbreaking emissions treatment technology, aiming to achieve ambitious sustainability goals with the support of Prof. Isidoro Giorgio Lesci.

In 2024, Italcer Group also launched the first 100% electric kiln in Spain, which saves 1,500 tons of CO₂ per year. In the same year, Italcer was awarded the Sustainability Award, ranking first among Italian companies for its environmental commitment.

Graziano Verdi, CEO of Italcer Group



New management for MBP Surfaces and Rossi Stone Surfaces



Stone fabricators, MBP Surfaces and Rossi Stone Surfaces have appointed a new management team to support the groups ambitious growth plans. Following the merger of the UK fabricators in 2024 as part of the HLD Group, the brands have been supplying stone surfaces to customers for more than six decades.

Rossi Stone Surfaces co-founder, Paul Hogan, has recently taken on the managing director role of both companies. Having co-founded Rossi Stone back in 1999, Paul has built up a vast customer base in his 26 years of trading.

Tom Bendell will continue his role as group operations director. Tom has family roots in MBP Surfaces which was founded by his father and uncle back in 1989. Tom joined the company 14 years ago as an apprentice installer. Since then he has worked in the technical

drawing and sales team, before stepping up to oversee the day to day operations of the company.

The group have also recently appointed Guy Rawstorne who joins as group sales director. Guy has a wealth of industry knowledge and was most recently sales director at Caesarstone UK and ROI.

Managing director, Paul Hogan comments: "It's an exciting time to be a part of MBP Surfaces & Rossi Stone Surfaces. Both businesses have long and proud histories and are respected and trusted throughout the industry, and rest assured, we plan to keep it this way. To support our ambitious growth plans, going forward we will utilise our Yorkshire and Enfield manufacturing sites to strengthen our product offering and enhance our service proposition for our customers."

European Stone Festival returns to the UK

Former *Stone Specialist* editor, Eric Bignell reports on The European Stone Festival which is returning to the UK this year. It will be held 24-25 May at The Minster in Halifax, West Yorkshire.

The annual European Stone Festival was to have been held in Halifax in 2022

but became a casualty of the Covid lockdowns. However, it was always intended that it should come to Halifax as soon as possible and this year it will. It is the third time it has been held in the UK (it was in Canterbury in 2003 and Lincoln in 2012).

The Festival was instigated

by the stonemasonry college in Frieberg in 1999 and is still overseen by the college. It has grown in popularity as it has developed and wherever it goes always attracts well over 100 carvers and crowds of visitors. Anyone who would like to come and see the carvers at work and enjoy the food and entertainment that will accompany the carving event are welcome from 10am to 6pm on the Saturday and Sunday of the Festival.

This year the number of carvers had to be restricted to 120 because that is the maximum who could be accommodated, although Helen Jukes, who is the powerhouse from the West Riding Stonecarving Association (WRSA) pulling everything together, says there were a lot more who have missed the boat because applications were accepted on a first-come-first-served basis. Most of the carvers taking part this year

come from mainland Europe, although there is a strong contingent of about 50 from the UK.

At the conclusion of the European Stone Festival the works produced by the carvers during the weekend will be auctioned, so visitors will have a chance to take one of the works home with them. The stone they will be carving this time is the limestone from Johnston Quarry Group's Creeton Quarry in Lincolnshire.

As well as the carvers, there will be the stands of some of the companies associated with stone carving selling their products. There will be a selection of food on sale with Dimitri the magician to amaze and amuse diners. A musical background will be provided by Phil Hayley & His Comets, the Elland silver youth band and the roaming Ski Band.

Find out more at: stonecarvingfestival.uk and stonecarvingassociation.org



Breton release market insights for next five years

Breton has released its market forecast for the next five years – Towards 2030 – Big Trends in the Fabrication Industry. The report offers insight into the groundbreaking innovations transforming the industry with the aim of helping businesses embrace safer, smarter and more efficient processes. Topics include: silica-free materials; advanced printing technologies; innovative ceramics and generative AI.

Silica-free materials

The report highlights the need for proper controls to minimise the risk when working with products containing crystalline silica and offers Breton's products including Bioquartz and Lapitec sintered stone as safer alternatives.

Printing

Printing on quartz surfaces is, says Breton 'the leading innovation, greatly expanding creative options for producers'.



Breton Chromia's digitally printed slabs have 1,200 native dpi printing resolution.

Ceramic Materials

According to the report 'ceramics are notoriously

delicate during fabrication, making precision cutting and processing essential to avoid breakage and waste.' Breton Trinity 5-axis CNC is feted as offering a cutting process that is fast, versatile and reliable.

Generative AI

Breton introduce Pulse and Sapiens systems to harness the potential of Artificial Intelligence.

To read the report in full, visit: <https://publuu.com/flip-book/197672/1708336/page/1>

New London showroom for Lapidica

Lapidica has opened its new London showroom in Pimlico's design district to showcase its comprehensive range of natural stone, including genuine antique reclaimed stone and fine Italian porcelain.

"We have waited a long time for the right location, and when this space in the Pimlico design district became available, I knew immediately that this was the place to be," says Jason Cherrington, managing director of Lapidica. "We are delighted to be located amongst other inspirational interiors brands, and it is ideal for interior designers and customers to cover all design bases within one area. Our showroom manager Nicola Kemplay and her excellent team are ready to show London what we have to offer, and we're very excited to be a part of the design community here."

There is a dedicated area to display Lapidica's reclaimed

antique stone floors, including examples of its English flagstone, Barr de Montpelier and Lyon Terracotta. Lapidica's custom-cut service transforms these historic floors from irregular pieces of antique stone into dimensioned pieces, making them suitable for modern use. These are shown alongside a collection of limestone floors created in partnership with English Heritage, inspired by properties within English Heritage's care.

Also on display is a selection of solid marble sinks, fabricated by Lapidica's own CNC machine. These include marble Belfast sinks and shallower basin designs in honed and antiqued finishes. Lapidica's expert stonemasons can transform stone into bas-relief tiles, staircases, balustrades, full scale statuary, book-matched panels, custom-designed inlays, intricate mosaics and more. The showroom contains a



dedicated meeting area where Lapidica's project consultants can advise on anything: from the products sold from stock to complex one-off designs and manufacturing projects.

The company's new Composition collection will take centre stage and is exclusive to the London showroom. This luxury stone surface is created with a combination of monochromatic natural stones including travertine, marble

and basalt. These have been cut into geometric shapes and precisely fitted into a unique pattern to create a striking statement design for floors and walls. Also exclusive to the London Lapidica showroom is a collection of handmade terracotta tiles featuring reliefs of colourful and bold geometric shapes.

An 'indoor-outdoor' room is dedicated to the Ornamenti collection by Lapidica.



Duo Maxi Pedestal System from Profilpas

Mapei

E20

Mapei invites you to stand E20 to see demonstrations of the Duo Maxi Pedestal System from Profilpas. Made for speed, durability and precision in raised flooring installations, with quick adjustment features and a strong load capacity, it is built to perform in any setting.

The company is also showcasing the UltraCare cleaning range, designed to protect, clean and maintain all types of surfaces ensuring long-lasting results with professional-grade performance.

Explore industry-leading adhesives, grouts and silicones trusted by professionals worldwide. Whether you're looking for innovation, expert advice or just want to see what's new, Mapei has something for you and offers the complete solution.

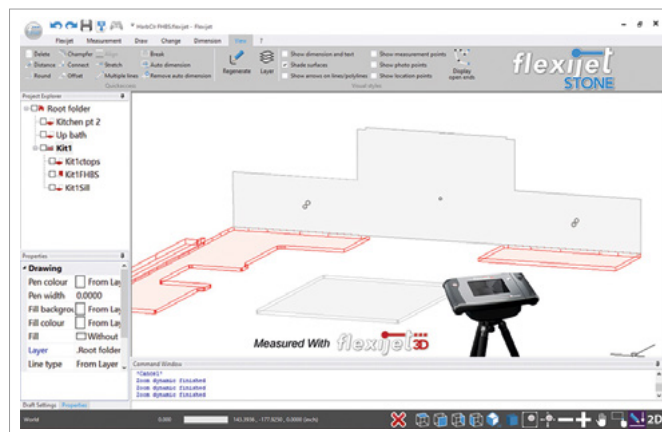
Stonegate

C40 and C50

Over the last ten years, we have seen a concerted move away from more traditional templating methods in the stone fabrication and wider construction industries. The use of cardboard, wood and plastic templating sheets can throw up a variety of challenges in terms of storage, accuracy and sustainability. Digital templating systems, such as Prodim Proliner and LT-2D3D, have become increasingly popular thanks to their ability to quickly and easily create CAD drawings on-site, and the overall accuracy of their measurement.

Another laser templating device that is building a growing band of followers in the UK and Ireland is the Flexijet 3D, sold and supported by the team at Stonegate. So why choose Flexijet 3D?

Flexijet 3D offers unmatched precision with millimetre accuracy, ensuring every measurement is right first time.



Flexijet 3D laser templating system from Stonegate

With integrated CAD software you can create 3D models on-site in real time without the need for extensive post-processing. This saves you time, reduces site visits, and means that transposed errors are a thing of the past.

The Flexijet 3D was designed, and has been developed over a number of years, for a wide range of applications. This means it is perfect for anything from simple worktop measurements to complex architectural details, so whether

you are a self-employed templater or sub-contractor, or you are working for a larger design studio, it is perfect for you. Its user-friendly interface makes it accessible to both beginners and professionals, but Stonegate offer full integrated on-boarding, training and aftercare support, from a dedicated Flexijet specialist.

Lightweight and easy to transport, Flexijet 3D can be used in various environments, making it a versatile tool for any

job site. And, it only requires a single operator.

Stonegate were recently delighted to receive this feedback on the Flexijet and Stonegate support from Lee at Plan-It Stone: "The tripod is sturdy, 3D model is easy, you can remotely do it by yourself, accuracy of the machine is brilliant. I have done about 400 jobs now and we haven't had any refits or any issues. We have recently just done a bathroom where there was just a toilet and a sink, there was only just room for the laser it's just perfect for that 360° movement so I can get all the way round the room. The biggest job I've done recently is a floating staircase where I have had to get the top tread, the two sides and the end, plus the bottom in one continuous hit – quite tricky but with the remote control on your phone it's so much easier, you don't need anyone. Stonegate service has been immense, it's probably the easiest laser I've used."

Stonegate will be giving live demos of the Flexijet at the Stone Show.



Leica Geosystems' ICS 50

Stone Automation

C30

Salvatore of Stone Automation is very much looking forward to the Stone Show. During the show the team will be featuring the new XP line from Wodiam Tooling. There will also be a collection of high-speed routers, drills, ultra-high-speed polishing systems for bowl cutouts and external edges, as well as the new Pascal XP for cutting quartzite, ceramic and even natural stone and regular quartz.

From Donatoni, which has a number of CNC work centres in the UK, there will be parametrics terminals so customers can see how easy it is to learn to program the machine. Waterjet is also on the way and edge polisher will be added to the collection. From Tesimag, there will be the Plug and Play Orion water system – just connect the power and put the pump in the pit and then you're ready to go.

From Leica Geosystems, there's the ICS 50 with the v-pen – this unit is not only a dual system with the latest generation laser and v-pen but it also has 3D modeling built-in which is extremely versatile and very user friendly.

Vetro Tooling

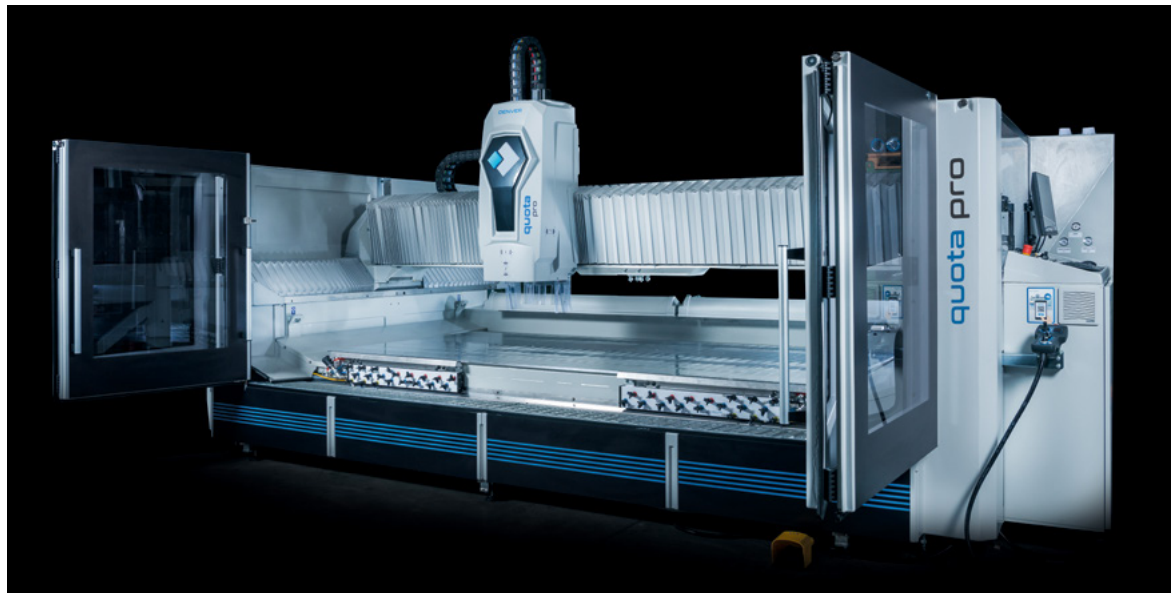
D26

After a successful partnership in Ireland, Vetro Tooling Ltd and Denver Glass and Stone Machinery are bringing their powerhouse alliance to the UK stone fabrication market.

In a significant move set to shake up the stone machinery sector in the UK, Vetro Tooling has announced an exclusive new agency partnership with Italian manufacturing giant Denver Glass and Stone Machinery. This marks a strategic expansion of a well-established collaboration that has already made waves across Ireland in recent years.

The announcement signals Denver's renewed focus on the UK market, leveraging Vetro Tooling's deep-rooted presence, technical expertise, and exceptional customer support infrastructure. As the new official agency for Denver's range of stone machinery in the UK, Vetro Tooling will be providing sales, service, and support across the country, offering customers direct access to one of Europe's most respected names in CNC and manual stone processing equipment.

This isn't the first time the two companies have joined forces. In Ireland, the Vetro-Denver partnership has delivered consistent results,



QUOTA Pro 3350 Stone CNC machine

providing a wide range of stone fabrication businesses with state-of-the-art machinery backed by responsive service and tailored solutions. By combining Denver's innovative engineering with Vetro Tooling's strong local presence and customer-first philosophy, the collaboration quickly gained trust and recognition in the Irish market.

"From the beginning, our partnership with Denver has been about more than just machines—it's been about relationships," says David Lithauer, director at Vetro Tooling. "We've seen firsthand how this combination works

in Ireland, and we're confident it will translate into real value for stone processors here in the UK."

Denver brings a comprehensive portfolio of machinery, including CNC bridge saws and work centres—all designed with the modern stone fabricator in mind. The machines are renowned for their build quality, intuitive controls, and Italian craftsmanship.

With Vetro Tooling acting as the UK agency, customers can now expect faster lead times, expert consultation, and fully supported installations backed by engineers who understand

the day-to-day needs of British workshops.

The expansion into the UK is being welcomed by fabricators looking for alternatives in a market that's becoming increasingly competitive and quality-driven. With a reputation built on trust and performance, this renewed alliance is poised to become a game-changer for stone processing businesses looking to invest in reliable, cutting-edge solutions.

As Vetro Tooling ramps up its UK operations in partnership with Denver, one thing is clear: the future of stone machinery just got a serious upgrade.

New perspective in New York

New York resident Christine Cole of Precision Stone Inc professes her love for the architecture of the Big Apple



New York Public Library



One of the most special aspects of living in New York City is the constant sense of awe I feel every day. The city's energy, its people, and the environment all contribute to this feeling, a wonder that has been shared by millions before me. If I'm not going to romanticise my life, who will? One of the most powerful sources of this wonder is the city's built environment, particularly its towering stone buildings. These architectural

masterpieces, crafted from materials like marble, limestone, and granite, connect us to the past and to the people who lived in different eras. They offer a humbling perspective on time, grounding us in the present while fueling a constant curiosity about history and the reasons behind the way things are. This fascination is why I frequently seek out Manhattan's stone buildings, each a monument to history and craftsmanship. These buildings have

become special to me: the New York Public Library, The Ansonia, 220 Central Park South, 1 Wall Street and the Municipal Building. They represent the city's architectural legacy, blending historical significance with lasting impact.

First, let me begin with the building I'm lucky enough to call my neighborhood library. The city's main branch, officially known as the Stephen A. Schwarzman Building, is a grand example of Beaux-Arts



ABOVE The Ansonia

LEFT Exposed bedrock in Central Park



220 Central Park South

design. Completed in 1911, the library was designed by John Mervin Carrère and Thomas Hastings, who drew inspiration from classical European architecture, as many of New York's historical landmarks do. The general contractor for the library's construction was Theodore Starrett of Starrett & Van Vleck. The exterior is clad in white Vermont Danby marble, which immediately captures the attention of passersby. There's a timeless elegance to the grand staircases leading to towering Corinthian columns. The facade makes you feel important as you enter, a fitting sentiment given that knowledge is power. You also feel empowered by the iconic lion statues, Patience and Fortitude. These beautiful beasts were designed by Edward Clark Potter and carved from pink Tennessee marble by the Piccirilli Brothers, an Italian family of stonemasons who also worked on several other major sculptures around the city. Inside, the library is equally breathtaking, with vast reading rooms, high vaulted ceilings, and exquisite woodwork complementing the stone. There are several places to study, including a rooftop terrace. The library stands as a symbol of the city's dedication to knowledge, culture, and architectural excellence.

Next, you'll find another stunning example of Beaux-Arts architecture uptown: The Ansonia. This residential building on the Upper West Side, at the corner of Broadway and 73rd Street, was completed in 1904 and designed by French architect Paul E. Duboy. Originally built as a luxurious hotel, the construction was overseen by Michael Reid & Co. The building's striking limestone and brick facade is adorned with sculptural details, rounded corner towers, and a mansard roof that evokes Parisian architecture. The Ansonia has hosted many celebrities, including Bobby Short, Babe Ruth, and Angela Lansbury. In the 1970s, it was also home to Plato's Retreat, a famous swingers' club. I can't help but wonder if the club's founders simply wanted an extravagant building to match their extravagant evenings. The Ansonia is undeniably a part of New York's cultural fabric. Its location, just steps from Central Park, adds to its appeal. For geology enthusiasts, Central Park is a real treat, as the exposed bedrock and Manhattan Schist peek out among the high-profile residences.

A short walk through the west side of the park also brings you to my next featured building: 220 Central Park South. ➡





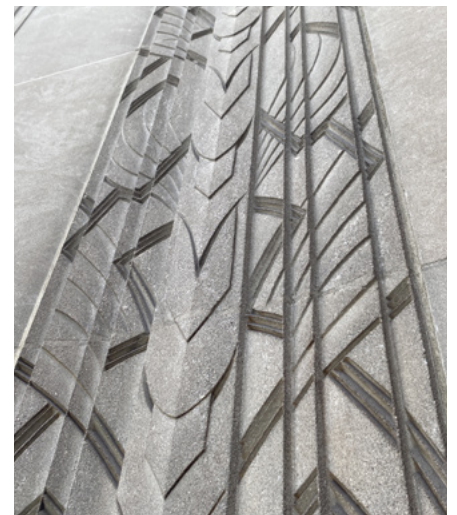
220 Central Park South

Designed by Robert A.M. Stern Architects and completed in 2019, this neo-classical skyscraper is clad in Alabama Silver Limestone and is the most contemporary structure on my list. Rising 953 feet, the tower features a setback structure, large windows, and intricate detailing with Art Deco influences. Lendlease, an Australian construction giant, served as the main contractor. Amid the glass-and-steel skyscrapers of “Billionaire’s Row,” this cream-coloured beauty stands out as a testament to modern luxury and refinement. The history of Central Park South itself is intertwined with New York’s social and real estate evolution, but for now, I’ll also just bring attention to the Irish Connemara marble that graces the entrance arch.

We then travel downtown to another significant landmark: 1 Wall Street. Originally built as the Irving Trust Bank, this building is sometimes called “the other Art Deco skyscraper.” Though it doesn’t have a massive spire or antenna like the Empire State Building, it still has its own charm and sculptural beauty. Completed in 1931, the building was designed by architect Ralph Walker, with the construction overseen by Marc Fidlitz & Son, Inc. The exterior, clad in Indiana limestone, features a streamlined vertical design with subtle geometric ornamentation and detailing. Inside, the building boasts the spectacular Red Room, a mosaic-clad lobby designed by Hildreth Meière. In recent years, it’s been converted into luxury residences, blending historical grandeur with contemporary living. I had the privilege of touring one of the remodeled residences last year

with the Institute of Classical Art and Architecture. The area around 1 Wall Street is also historically rich, with cobblestones laid during the industrial boom in the 1800s, mimicking the original Dutch paving from when the area was known as New Amsterdam. There’s so much history beneath your feet.

Finally, I’d like to highlight the David N. Dinkins Municipal Building, one of New York’s most important government structures. The building was designed to accommodate the increased governmental space demands after the 1898 consolidation of the city’s five boroughs. Completed in 1914 and designed by William M. Kendall of McKim, Mead & White, the building exemplifies ancient Roman influences with its classical detailing and colonnade. It’s truly a monumental structure—one of those buildings that makes you exclaim, “People just don’t make these anymore!” The building’s primary materials include Ashlar granite and terracotta, and it features a central tower crowned by the gilded statue ‘Civic Fame,’ sculpted by Adolph A. Weinman. The Thompson–Starrett Company, a leading construction firm of the early 20th century, built the Municipal Building. One of its most unique features is its integration with the subway system, an innovation in early 20th-century urban planning. This was originally where the metro trains were supposed to meet, but that location was switched to Grand Central Station. As I hope you can tell by reading this far, I admire fine details: the many reliefs above are adorned with shields, including one with a beaver, a nod to John Astor and his family’s fortune made in the beaver pelt trade.

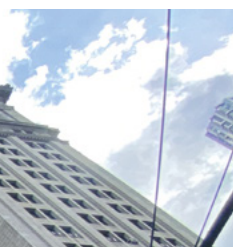


This area of downtown is often overlooked by locals, with many of my friends saying they “never get down there.” However, after I shared my stone-seeking adventures with them, they expressed appreciation for the reminder to explore. The highlight of my photography session was when a woman passing by stopped me to ask about the ceiling of the arch I was photographing. She had never noticed the detail before and was grateful for the new perspective. My job was done.

Though I say this comically, it genuinely gave me joy to show someone else the hidden stone details of New York’s built environment. I enjoy learning how things came to be and discovering where the materials came from. I enjoy getting to sit and reflect about the stonemasons and construction workers who used their muscles and minds to build these structures. I enjoy analysing why these works of art instill awe in me everyday. Most of all, I hope this inspires at least one other person to look up and research the fascinating history behind their favourite building. ■



I Wall Street



David N. Dinkins
Municipal Building



The beauty of slowness

Zoë Wilson explains the importance of hand carved stone in a fast-paced world



Photo Sarah Zipfell

Zoë takes time to consider each cut and plans her approach with methodical detail.

In a world that seems to be moving faster than ever, I take pleasure in working in a craft which is deliberately unhurried: stone carving. Not just any stone carving, but the meticulous, hand crafted shaping of geometric patterns into British stone, a process that demands patience, precision and deep respect for the material. While so much of modern life is built around efficiency and speed, I find immense value in the slowness of my craft. In many ways, it has become my antidote to the rush of the world around me.

Discovering the joy of slowness

Like many of us, I feel the pressure of time, the sense that there is always more to do, always another deadline to meet. New technologies constantly promise to save us time, from high-speed cooking gadgets to AI-driven tools that generate content at the press of a button. But where does all this saved time go? Often, it is simply

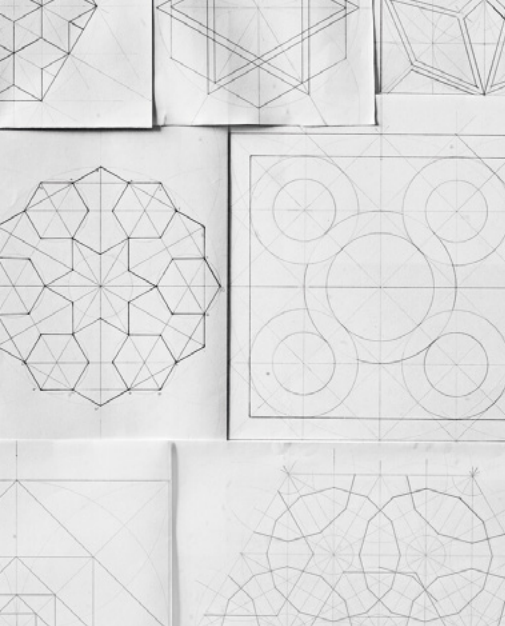
filled with new tasks, leaving us busier than ever.

By contrast, stone carving resists this relentless acceleration. The act of chiselling stone is inherently slow, requiring patience and precision. There is no rushing the process, each strike of the chisel must be considered, each cut deliberate. This pace allows for a kind of focus that is increasingly rare in our modern lives.

I first became acutely aware of this during lockdown. With everything on pause, I had time to truly notice the rhythms of my days. My one-year-old son and I spent hours wandering the woods, collecting sticks, completely immersed in the present moment. In the studio, my carving took on a new significance. With so much uncertainty in the world, the meditative act of carving gave me a sense of grounding. It was then that I realised my craft was more than just a way to create, it was a way to slow down, to focus, to be fully present.



Photo Sarah Zipfell



The process of carving involves making a connection with the stone and taking time to embrace the quiet rhythm of the chisel.

Geometry and the language of stone

While I had long been drawn to geometric patterns, it was also during lockdown that my approach to design underwent a shift. Inspiration had always come from the world around me, patterns in ironwork, tiled floors in old pubs, unexpected details in everyday objects. But with the world suddenly much smaller, I found myself searching for a new way to explore form and pattern.

I turned to geometry, diving deep into traditional design principles and learning to construct patterns with mathematical precision. I studied Islamic art, Gothic tracery and the sacred geometries found in nature. Geometry provided both structure and creativity, a set of rules that, paradoxically, offered endless possibilities.

Carving these patterns into stone is an immense challenge. Like lettering, the quality of the carving is only as good as the accuracy of the drawing. Unlike lettering, however, geometry has no room for ambiguity, every angle and intersection must be perfect. The process requires absolute focus, as even the slightest variation in chisel angle can throw off the entire design. But this challenge is what makes it so rewarding. There is something magical about watching a pattern emerge from the stone, seeing the way light catches the carved lines and creates new relationships between shapes. No matter how many times I do it, I never tire of the moment when a flat sketch transforms into something dynamic and alive.

Honouring tradition in a digital age

During my apprenticeship in stone masonry, I spent countless hours using power tools, angle grinders, saws, pneumatic chisels. It was efficient, but I never loved it. The noise, the dust, the physical strain, it all felt at odds with the connection I wanted to have with the material. Eventually, I made the decision to move away from power tools altogether. Now, I work solely with hand tools, embracing the quiet rhythm of the chisel.

In an age where digital fabrication is becoming increasingly dominant, why choose to work this way? Because I believe craft is about more than just the finished object, it is about the relationship between maker and material. Handmade work carries the marks of the person who created it, every chisel cut, every subtle decision along the way. These details give a piece its soul, its uniqueness.

This is not to say I reject modern technology entirely. In fact, I have found ways to integrate digital tools into my practice in a way that enhances rather than replaces the handmade process. For instance, I use 3D scanning to create digital records of my carvings, something that allows me to revisit designs even after the original pieces have been sold. I also experiment with casting techniques, using digital prints to create limited edition replicas of my work. This technology does not take away from the craft, rather, it allows me to explore new possibilities while preserving the integrity of my hand carved originals.

The value of handmade work today

We live in a time when almost anything can be mass produced with precision. Yet, there is an increasing hunger for objects that carry meaning, pieces that tell a story, that connect us to something real. Handmade work offers this in a way that factory made objects simply cannot.

When someone buys a hand carved piece of stone, they are not just purchasing an object, they are investing in time, skill and history. Stone takes millennia to form. Carving it by hand honours that history, adding another layer to its story. It is the opposite of disposable culture, it is something made to last, something that will outlive us all.

This is why traditional craftsmanship still matters. Not because it is nostalgic, but because it reminds us of something essential, that the best things in life, whether art, relationships or personal growth, cannot be rushed.

In a world that moves ever faster, taking the time to carve by hand feels like a quiet act of resistance. It is a way to slow down, to focus, to create something that will stand the test of time. And in the end, is that not what we all want, to leave something lasting behind? ■

To find out more about Zoë and to book on one her courses, visit:
zoewilsoncarving.com



A day in the life

Becca Cranfield talks to fellow Women in Natural Stone member, Carolina Saboya de Toledo, design manager at EDM London for an insight into her life



My day begins when my alarm rings at 6:30am —though sometimes, I wake up before it, which I actually prefer, even if it means an earlier start. The first thing I do is get the coffee machine running while choosing a podcast or video to accompany my morning. I enjoy taking my time with my coffee and my thoughts, allowing myself a moment of calm before the day truly begins. Once I'm finished, I start getting ready for work, often continuing with a podcast or playing some music, which stays with me throughout my commute until I arrive at the office.

Most of the time, you'll find me working in the office, but my job is far from stationary. Depending on the projects at hand, I might be on site, in external meetings, or visiting factories and quarries. My typical day involves tracking project progress with the team, managing timelines, strategizing solutions to achieve what sometimes feels like 'the impossible', and discussing details to bring each design to life. I also support tender budgeting for new projects and assist the Interiors Design team as needed. Every day presents new challenges, and that's what keeps it exciting.

Over the years, I've had the privilege of working on incredible projects, each presenting its own challenges and solutions. As clichéd as it may sound, every project holds a special memory for me. From retail spaces and private residences to temples and palaces, I feel fortunate to have contributed to some of the most prestigious projects around the world. What continues to surprise me is that, with every new project I take on, there is always at least one special element that makes it just as remarkable as the last.

When I was younger I wanted to be a gymnastics coach! Gymnastics was a huge part of my life from an early age until my late teenage years. Training and competing shaped much of my childhood, and for a long time, I dreamed of coaching.



Most people wouldn't guess that I was so deeply involved in gymnastics and it remains a passion of mine even today. Though I no longer train, I still enjoy watching major competitions and cheering for the athletes. As a Brazilian, many assume my passion would be football, but that's not the case!

Another lesser-known fact about me is my professional journey before entering the stone industry. I've worked in vastly different fields, including teaching, and even had the opportunity to work with globally recognised names such as Mercedes-Benz Brazil and Disney World Orlando. These experiences shaped both my personal and professional growth, expanding my adaptability and perspective.

Additionally, something that might not be widely known is that my work in the stone industry led me to the Middle East, and I lived in Dubai for nearly four years.

While my move was driven by professional opportunities, the experience has also deepened my cultural understanding and global perspective which is something I deeply value.

One of my most unforgettable experiences was visiting Mexico to see a temple project I had spent nearly two years designing from our London office come to life. Witnessing it firsthand and receiving such a warm welcome from the final client was an incredibly rewarding moment.

At first, the world of stone may seem overwhelming – especially if you're working from an office. Many people don't realise just how vast and intricate this industry truly is. But once you immerse yourself in it, you'll see the endless possibilities of working with such a prestigious and natural material. My advice? Don't limit your perspective. Visit sites, factories, and quarries. Be

curious. Study past projects. Question methodologies. Allow yourself to be amazed by the depth and artistry of this industry – you won't regret it ■

If you'd like to join the Women in Natural Stone group, email Sara Atkinson to be added to the WINS Mailing list sara@stonefed.org.uk

Join and follow the Women in Natural Stone LinkedIn Page for latest updates and upcoming events

Becca Cranfield is co-director of Athena Stonecare, leading specialists in natural stone restoration and maintenance.
athenastonecare.co.uk



Building Burghley

Clare Howcutt-Kelly visits stonemasons Mick Teale and his son, Ben at one of the largest and most spectacular Elizabethan houses in the UK



Photo: Kingsley-Singleton

Burghley House in the spring

LEFT Mick and his son Ben share a joke on the roof at Burghley



Burghley House in Lincolnshire is known for many things including the Horse Trials and has played a starring role in many period dramas including *The Crown*. And while all these things are wonderful, there's two people who aren't part of the cast or riding in on horseback but are equally as important. And that's Mick Teale and his son Ben who are the in-house stonemasons.

The house was built between 1555 and 1587 by William Cecil who was Lord High Treasurer to Queen Elizabeth I. When we say he built it however, I'm pretty sure he wasn't on the tools.

Like most powerful men of his time, he

wanted his house to have some serious curb appeal and it most certainly did. With some 115 bedrooms and an array of architectural features that were designed to impress, it's a show-stopper of the highest order.

And it's believed he wanted to impress Queen Elizabeth I more than anyone else – creating a bedroom just for her. The twist in the tale is that a member of the Burghley household contracted smallpox and although she was close by, she wasn't able to go inside the house. You'd be pretty annoyed, right?

The stone used to build the house is a golden limestone quarried from land owned



Photo: Katelyn Singleton

ABOVE, CLOCKWISE View from one of the stone oculi; Lion Bridge prior to restoration and Olive with Mick and Ben in the workshop

by Cecil at nearby King's Cliffe and the roof is Collyweston slate, also sourced locally. Much of what Mick and Ben work with is reclaimed from across Burghley's vast estate which comprises many properties and buildings.

Unlike the stone, Mick and Ben aren't native to the area – the Teale family relocated from Doncaster in 2023. Mick wasn't new to Burghley, though. In 2021, he was part of the team who worked on the restoration of Burghley's iconic 18th century Lion Bridge designed by Lancelot 'Capability' Brown.

One of Burghley's key features are its 76 Tuscan order chimneys – this might seem excessive but this was a man out to impress Elizabeth I remember – and her entourage of 100 people would surely need a few fires? On the roof there's also decorative cupolas and pinnacles and much more besides.

The 16th century clock tower at Burghley House is a particularly striking feature which is topped by a pyramid shaped obelisk with a clock face flanked by lions. The columns are a nod to ancient Greek architectural order with stocky Doric columns at the bottom, then ionic with its scroll details known as volutes and on top, the most ornate Corinthian columns.

When I visit Ben and Mick we head up onto the roof so they can show me what they've been working on. The father-son team recently took down some of the chimneys, taking them back to the top of the Romanesque columns before rebuilding and re-leading the joints. Each weighed around 2.5 tonnes which is no small feat.

Working and living with your dad isn't for everyone but for these two, it works.

"Of course, it's just the two of us but he does push me and it pushes me more than I could push myself. Sometimes he gets on my nerves but he's my dad at the end of the day and he's an incredibly experienced mason," says Ben.

They have an ease about them and laugh

frequently. Mick has been a stonemason for decades but Ben started off on a different path studying Sport and Exercise Therapy at Leeds Beckett University.

Currently training at Moulton College, Ben is an apprentice stonemason who mainly focuses on banker masonry.

I watch the two together and you can see how proud Mick is to have his son by his side. "He's really got into stonemasonry. Ben talks a lot about stone even when we're at home and we have a laugh."

Mick started his own journey into construction in 1994 originally training as a bricklayer at Doncaster College before being offered a job by Historic Property Restoration Ltd who put him through his banker masonry training at York College. He would go on to spend 23 years with the company working on some of the most significant monuments in the UK.

The length of his tenure is testament to the joy his work brings him and when you're in his company, his expression tells me this is a person with many stories. And of course, Ben is fortunate enough to work with his dad everyday benefiting from his experience and a few wisecracks, no doubt.

"We've got to keep the heritage skills alive and engage the younger generation", says Mick. "If we don't, what will happen in 20 years' time when we've all retired and we've got nobody coming through. Who's going to look after these incredible buildings?"

Apprenticeships, he says, are massively important and while other trades are easily accessible via training at colleges across the UK, options to train in stonemasonry at college are limited. Currently Bath College, City & Guilds of London Art School, Moulton College and York College are the only educational institutes that offer it.

Ben explains the challenges: "I'm lucky to have my dad with so much experience but if you're starting out in stonemasonry at college, it's not like bricklaying where you'll



have a class of 60 people and someone has a mate who has a mate on a site who can help you get a job."

Pride is a word that comes up a lot during our conversation once we head back to the workshop where the Teale's 'dust dog', Olive, is excitedly waiting for us.

"Every piece we work on is a piece of pride", Ben explains and Mick agrees, "but we don't show off our heritage skills nearly enough. People will often look at a building, see the enormous features like the chimneys at Burghley and not realise someone's made that. It's all possible."

Ben admits that he seeks perfection in his work and will tweak and tweak until he's happy with it. "You've got pretty high standards. Sometimes too high," Mick tells him. "It's when you keep tweaking that you can make mistakes."

This is the voice of a master mason as well as a proud dad. Olive snuggles into Mick as he ruffles her head. She has the easiest job of all – just being cute.

Before I leave, I ask Ben what his favourite part of the job is. He doesn't need to think too long.

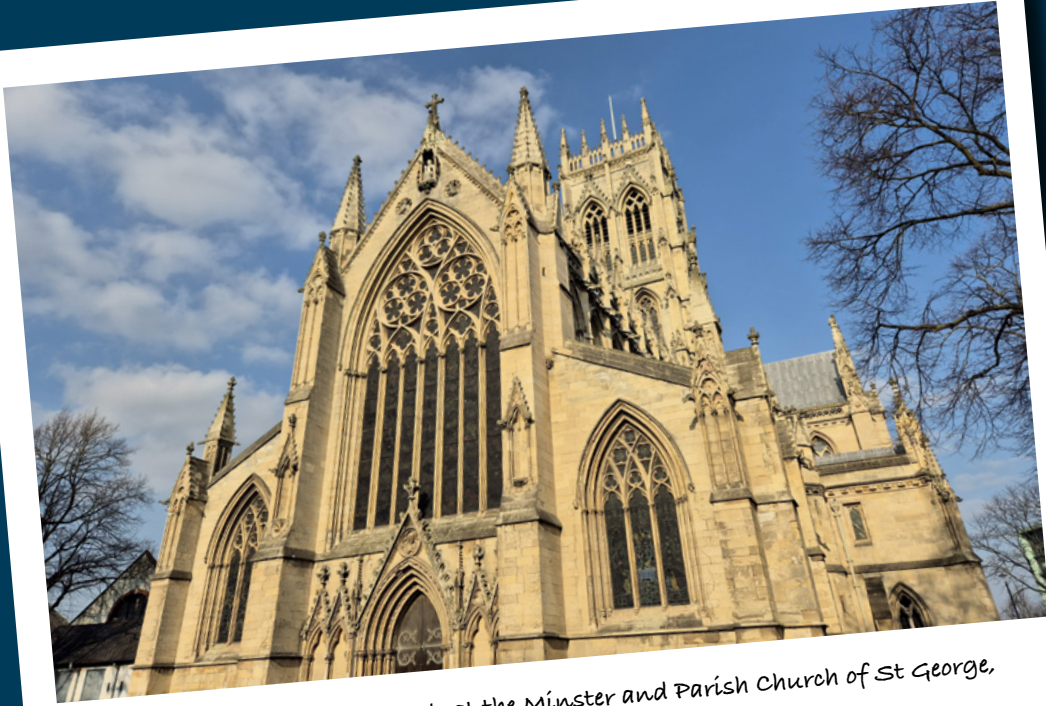
"I love being able to work on the house to be honest. It's a great stature of work and I'm proud to be one of the many stonemasons who've worked on it over the years." ■

For more about Burghley House visit burghley.co.uk

Follow Ben on Instagram at [@benteale_zand](https://www.instagram.com/benteale_zand) TikTok [@ben_teale18](https://www.tiktok.com/@ben_teale18)

Out of office

The days are getting lighter so it's time to get out and explore. Take a look at what editor Clare has been up to.



Clare stopped off for a quick look at the Minster and Parish Church of St George, Doncaster, also known as Doncaster Minster.



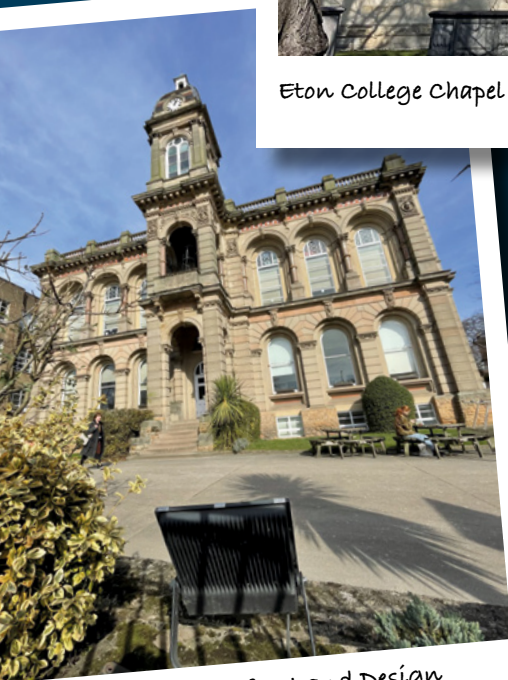
A stonemason's pride and joy – their tools! These belong to Freya De Lisle, a mason at York Minster.



A beautiful old mosaic outside the door of a shop in Windsor. Remnants of the past!



Eton College Chapel is built in the Gothic style and looks resplendent in the spring sunshine.



Nottingham School of Art and Design founded in 1843.



Clare visited York Minster for a tour of its Centre of Excellence ahead of the official opening.



Stonemason Ben Teale at work at Burghley House in Lincolnshire.



Salvatore Caruso demonstrates Leica Geosystems and their laser measuring and templating tools at RO Arnold in Doncaster.

Stone Federation Talent Connection

We know that the natural stone industry is built upon the pool of experienced and talented individuals who work within it. To help ensure the efficient flow of talent throughout the sector, in 2021 we launched the Stone Federation Talent

Connection, an initiative that matches those looking for work with companies needing to take on new members of staff.

This is free of charge to Stone Federation members and is part of our efforts to help the industry. If you are a company

looking to take on new staff, just send a PDF of the job description with contact details to matt@stonefed.org.uk. If you or someone you know has recently been made redundant, please send a CV to matt@stonefed.org.uk.

AGM & Members' Event

We are delighted to announce that on Wednesday 4 June we will be gathering for our 2025 Stone Federation AGM & Members' Event.

The Members' Event & AGM is our annual gathering of members. It provides you with the chance to learn more about the Federation's activity and be among the first to hear about some exciting new initiatives coming this year.

The event will be hosted at The Building Society in London's Fitzrovia and will be a fantastic opportunity to network with other Stone Federation members.

Tickets cost £50 + VAT. To book your places, please email sara@stonefed.org.uk.

Golf Day

We are delighted to announce that booking is now open for the 2025 Stone Federation Golf Day.

This is a fantastic opportunity to entertain your clients and network with other stone industry companies.

The event will be hosted at The Drift Golf Club in Surrey on 6 June and there will be teams of four playing a four-ball Better ball with individual and team prizes up for grabs. This year, following feedback from previous years, we will



be running the day with a shotgun start. The day will start with bacon rolls during registration and end with a BBQ at the Clubhouse followed by prize presentations.

To book your team or individual places, please email sara@stonefed.org.uk.

*Please note that the team captain must be a Stone Federation member.

Stone Federation Student Architect Prize

We are excited to announce the launch of the Stone Federation Student Architect Prize.

Natural stone is the original sustainable material, a fact that many architects are becoming aware of and engaging with. It is durable, beautiful and versatile and, compared with equivalent steel or reinforced concrete structures, it can offer significant carbon reductions.

We have established this prize to recognise outstanding student projects that showcase the use of natural stone, and to support and encourage the next generation of architects to make good use of natural stone in construction.

This prize offers a platform for student projects that demonstrate a thorough understanding of natural stone and make a compelling case for its use and/or reuse.

The panel welcomes projects at any scale from a modest domestic extension, private or public new build or retrofit,

urban public realm, rural landscape, or national context.

Each project should include design proposals that have a clear relationship with a particular site, and demonstrate viability in construction.

The project might include one or more of the following:

- Load bearing/structural uses of natural stone
- Use of the full geological range of the chosen stone
- Celebrating the natural beauty of the material
- Natural stone as a vernacular material, and how this continues to influence building typologies
- How natural stone might contribute to more sustainable building practices
- Using/reusing natural stone in a heritage/conservation context
- Natural stone's durability and longevity; the reuse of natural stone



Stone Federation STUDENT ARCHITECT PRIZE

Each entrant is asked to submit around 1000 words and 10 images, at least one of which should be a scale construction detail in plan and/or section.

The prize is open to any architecture student currently enrolled on an ARB/RIBA Part 1 or Part 2 course within the UK.

Projects submitted should have been produced by the applicant within the 2023-24 or 2024-25 academic years. Although the submitted projects may include group work, the majority of the




submission should have been produced by the applicant.

Any group work should be clearly annotated and credited to others involved in its production.

Please send your entry as a WeTransfer link with every file name starting with your first name and surname to awards@stonefed.org.uk.

The prize will be awarded at The Stone Show so entrants should ensure that they are able to be present on that day should they be successful.

Situations Vacant



Stone CNC Operator

Location: Harrogate
Salary: On application
Benefits: Private healthcare, Pension staff discount
Apply: Send your CV to: carolyn.bjelan@lapicida.com

We are seeking a skilled CNC Operator to join our dynamic team. This important role is to be the main operator of a 5 axis and 3 axis CNC machine. The ideal candidate will have a strong background in operating CNC machinery and a keen eye for detail. This role is essential in ensuring the precision and quality of our manufactured products, contributing to the overall success of our operations.

Key Responsibilities:

- To have overall operation of the CNC machines.
- Produce computer drawings and implement drawings to machine.
- Ensuring quality and precise items are produced ensuring adherence to design specifications.
- Able to interpret technical drawings and make necessary adjustments.
- Perform routine maintenance on CNC machines.
- Handle materials efficiently within the warehouse, maintaining an organised workspace.
- Ensure that all internal practices are adhered to.
- Work in a safe manner.
- Work closely with the Warehouse Department to ensure that information on all orders that are ready to pack is passed across.
- Troubleshoot and resolve issues related to machinery and production processes.
- Deal with external customers for maintenance contracts, repairs and additional equipment.
- Ability to interpret customers' templates and drawings.
- Collaborate with team members to improve production efficiency and quality.

Skills

- Proficient in operating CNC mills with a solid understanding of machining processes.
- Must have knowledge of CAD/CAM/G codes/5 Axis and origins.
- Ideally knowledge of Pegasus and Rhino for 3D objects.
- Strong basic maths skills for precise measurements and calculations.
- Mechanical knowledge is essential for understanding machine functions and troubleshooting.
- Experience with materials handling, ensuring safe and efficient movement of products.
- Ability to work effectively with hand tools for assembly and fabrication tasks.
- Previous experience in a warehouse environment is beneficial.
- Team player with strong and timely communication skills.

Stone Supplies





Berwyn Slate Quarry Ltd
Beautiful Welsh slate

- Kitchen worktops	- Cladding
- Honed floor tiles	- Memorials
- Paving	- Aggregates & more

www.berwynslate.com | 01792 851700

Digital Templating



PRODIM
COMPLETE DIGITAL
TEMPLATING SOLUTIONS

PRODIM-SYSTEMS.COM

Tools & Consumables



Stonegate

30 day risk-free guarantee
Next working day delivery
5 star customer feedback

stonegatetooling.com


Natural Stone Directory

No.23 2024-25

The latest edition of the UK's only comprehensive industry guide is now available

Whether you are looking to source materials, machinery or find fabricators, the Natural Stone Directory contains all the contact details that industry professionals need.

Order online at:
www.qmj.co.uk/shop
Or call Sue on
0115 945 3884



£57.50

(+postage and packaging for overseas orders)



Clearly.

TM

SIG
STONE INDUSTRY GROUP
SIG.LTD

E3-E5 Sovereign Business Park, Hawkins Lane, Burton On Trent, DE14 1PD. Tel. 01283 617888

The UK's ONLY
Water Recycling
Specialists

Clearly - ALL UK Made
Turrini - ALL Italian Made

UK & US
Dedicated Service,
Spares & Industry
specific consumables



turrini.uk

turriniusa.com



turrini.uk

turriniusa.com