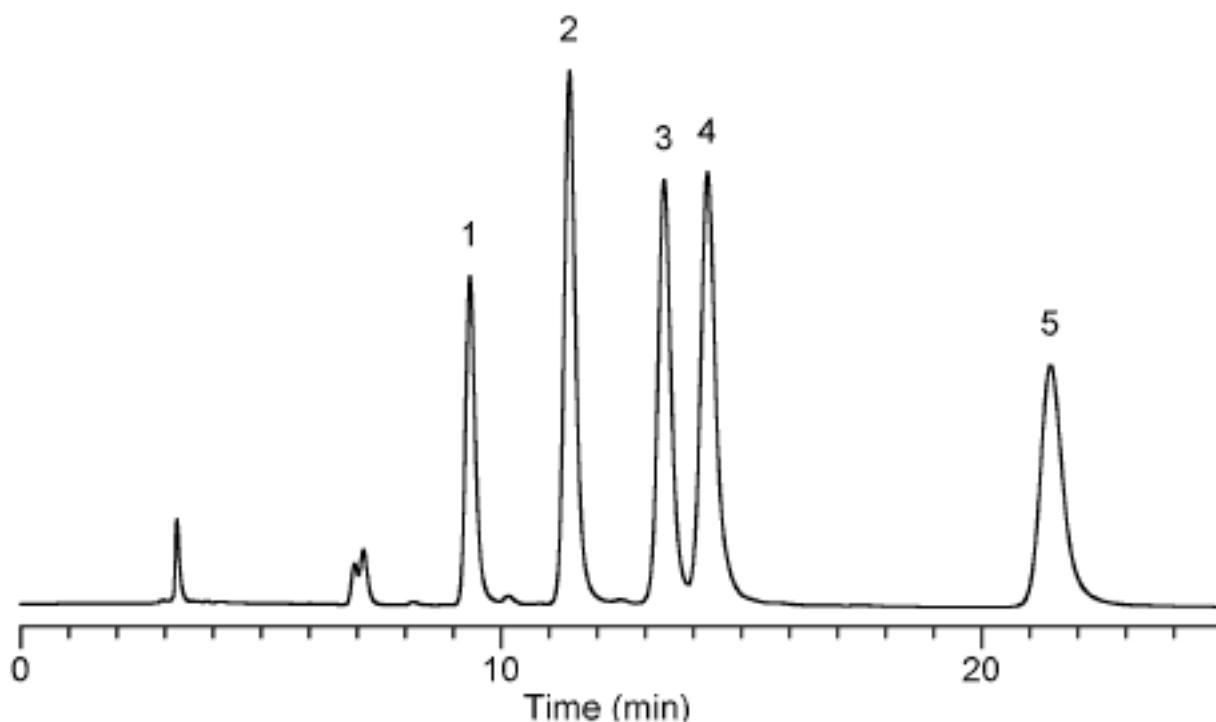


Analysis of Estrogens

Data No. LA245-0000



Column	: Inertsil CN-3 5µm 250×4.6mmI.D.	Solutes	: 1. Estrone 2. Estradiol 3. Ethynylestradiol 4. Diethylstilbestrol 5. Estriol
Column Cat. No. :			
Eluent	: Hexane / Ethanol = 90 / 10		
Flow rate	: 1.0mL/min		
Col. Temp.	: 40°C		
Detection	: UV 220 nm		
Injection Vol.	: 1µL		
Sample	: Estrone (1mg/mL) β-Estradiol (1mg/mL) Ethynylestradiol (1mg/mL) Diethylstilbestrol (0.5mg/mL) Estriol (1mg/mL)		