

YEAR 2022 - 2023

Japan School Tour Specialist

*EDUCATIONAL AND CULTURAL
EXPERIENCES FOR JAPAN SCHOOL TRIPS*



EXPOSE YOUR STUDENTS TO

Real-life experiences outside the classroom.

There is no homework with this assignment - the only assignment for your students is to arrive in Japan with enthusiasm, absorb everything they can and return with new knowledge and great memories!

We know that in many cases, this is your student's first opportunity to travel away from home, and we want to make sure it is full of excitement and personal growth. As teachers we understand your dedication to teaching and your passion to inspire your students and ignite in them a love of language and Japan. That's why our mission is to support you in all aspects of your planning, bookings and during your Japan Tour.





平成十七年八月吉日建之

平成二十一年五月吉日建之

平成十五年五月吉日建之

平成二十四年五月吉日建之

平成二十六年二月初午建之

平成二十六年八月吉日建之

平成十六年九月吉日建之

平成二十年七月吉日建之

平成十八年三月吉日建之

平成十九年七月吉日建之

"BETTER TO SEE
SOMETHING ONCE
THAN TO HEAR
ABOUT IT A
THOUSAND TIMES"

- JAPANESE PROVERB

一軒酒場

190円

一軒酒場一軒酒場
左の窓地を右へ

しゃぶしゃぶ
1980円

とらや





JAPAN

Travelling to Japan gives your students the opportunity to immerse themselves in the language and culture that they have been studying in the classroom. Not only are students immersed in real life opportunities to use Japanese language and develop their language proficiency, they also develop many other benefits due to experiencing overseas travel within a school group environment. Students develop personal growth, self-confidence and build the strength to make decisions and adapt to situations without the cushioning of parents and guardians. Even more importantly, through cultural awareness, the educational experience of overseas travel assists students in emerging as understanding global citizens. Students returning from a Japan Study Tour are more motivated to continue their studies through high school and often continue to tertiary or university level.

Teachers benefit by the opportunity to develop stronger student-teacher relationships outside the formal classroom setting. This usually results in increased student motivation and increased student participation when returning to the classroom. You will also benefit by creating networks within Japan and having the opportunity to collect assessment materials, teaching resources and realia for use in the classroom.

MAP OF JAPAN





日本へ
行こう




WHY CHOOSE US?

- 1 **Japan School Group Specialist**
- 2 **Over 25 years experience in arranging school Japan Tours**
- 3 **We are experienced Japanese Language Teachers**
- 4 **24-Hour Emergency Support in Japan**
- 5 **Australian Federation of Travel Agents and ATAS accredited agency**
- 6 **Lowest prices guaranteed**
- 7 **Personal tour co-ordinators**
- 8 **Fully customised tours are our speciality**
- 9 **Highest standard of excellence**
- 10 **Japan is our passion, it's our way of life**






A large wooden torii gate structure, likely at a Japanese shrine, stands by a body of water. The gate is made of dark wood and is partially reflected in the calm water. The sky is filled with soft, golden light from a setting or rising sun, creating a serene atmosphere. In the background, there are rolling hills and a stone path leading towards the gate.

BY LAND OR SEA SAIZEN TOURS IS YOUR GATEWAY TO JAPAN!

Japan is a wonderful destination for travel with family and friends. Be sure to contact us if you or your students are considering a trip.

FOR FURTHER TOUR OUTLINES AND INCLUSIONS

<http://www.saizen.com.au/family-and-friends>
or contact us at tours@saizen.com.au



"I TRULY BELIEVE
THAT THE TRAVEL
EXPERIENCE WITH
ANY OTHER COMPANY
WOULDN'T BE AS
STRESS-FREE!"

Being in Japan with so many students can be stressful but when you know you have 24 hours a day support from your agent, you know that nothing is insurmountable. Saizen never miss your calls when in Japan and their connections with local operators means that everything runs smoothly even if the teachers are first timers. I truly believe that the travel experience with any other company wouldn't be as stress-free.

- CANTERBURY COLLEGE, QLD



三正
清明
心灯

VERLASS
Since 1910

HEBELS

PARIS
NEW YORK
MILAN

Coca-Cola



TOP TIP!

INCREASE YOUR EXPERIENCES AND SIGHTSEEING IN TOKYO BY ADDING A FEW NIGHTS.



EAST JAPAN

World Heritage Gourmet Adventure

This is a fantastic tour for home economics students, language students and anyone who loves Japanese food! This gourmet tour focusses on World Heritage areas situated on or close to the east coast of Japan.

All breakfasts included as well as some lunches and all dinners with a variety of modern and traditional Japanese meals as well as food making experiences.

FOR FULL TOUR OUTLINE & INCLUSIONS

<https://www.saizen.com.au/east-japan-world-heritage-gourmet>

ITINERARY

DAY

- 1 Arrive Narita
- 2 Nikko - Japanese vegetarian restaurant
- 3 Nikko & Tokyo - soba noodle making class
- 4 Tokyo - plastic food making experience and sushi making
- 5 Shirakawago - traditional dinner in gassho-zukuri
- 6 Takayama - senbei rice cracker making experience
- 7 Fujikawaguchiko - mochi pounding experience
- 8 Fujikawaguchiko - Fuji-Q Highland Park
- 9 Depart Japan - Japanese bento lunch
- 10 Arrive Australia



TOUR HIGHLIGHTS

NIKKO SHINKYO BRIDGE



TOBU WORLD SQUARE



SOBA MAKING AND TEMPURA



KAWAII MONSTER CAFÉ



KAPPABASHI PLASTIC FOOD MAKING



SHIRAKAWAGO GASSHO-ZUKURI



WEST JAPAN

World Heritage Gourmet Adventure

Similar to the East Japan World Heritage Gourmet Adventure this gourmet tour focusses on World Heritage areas situated on the west coast of Japan, following the 'Golden Route'.

All breakfasts included as well as some lunches and all dinners with a variety of modern and traditional Japanese meals as well as food making experiences.



TOUR HIGHLIGHTS

TEA CEREMONY



SHOJIN RYORI DINNER



OKONOMIYAKI EXPERIENCE



ITINERARY

FOR FULL TOUR OUTLINE & INCLUSIONS

<https://www.saizen.com.au/world-heritage-gourmet>

DAY

- 1 *Arrive Kansai, Osaka*
- 2 *Kyoto/Nara - full day Kyoto & Nara Tour*
- 3 *Kyoto - Maiko tea ceremony, sushi making, shabu-shabu dinner*
- 4 *Hiroshima - okonomiyaki cooking experience*
- 5 *Miyajima - manju sweets making*

DAY

- 6 *Hiroshima/Osaka - plastic food making experience*
- 7 *Osaka - Universal Studios Japan*
- 8 *Osaka/Koyasan - Cup noodle making, shojin ryori dinner*
- 9 *Koyasan/depart Japan*
- 10 *Arrive Australia*



TOP TIP!

IF BUDGET ALLOWS ADD SOME CITIES AND GOURMET EXPERIENCES AS INCLUDED IN THE EAST JAPAN WORLD HERITAGE GOURMET ADVENTURE.





心友

たけのこ
TANTO

たけのこ
TANTO
メニュー

かみゆい
かみゆい



" NOT ALL
THOSE WHO
WANDER
ARE LOST "

- J.R.R. TOLKIEN



TOP TIP!

ADD SPECIAL AND MEMORABLE EXPERIENCES SUCH AS BUDDHIST PRAYER BEAD MAKING AT KOYASAN, A TEA CEREMONY WITH A TRAINEE MAIKO IN KYOTO OR AN A-BOMB SURVIVOR'S TESTIMONIAL IN HIROSHIMA.



World Heritage Adventure

World Heritage destinations are perfect to combine a tour with both humanities students and language students.

This tour includes the historical Nikko Toshogu Shrine, symbolic Mt Fuji, World Heritage regions of Takayama and Shirakawago in the Japan Alps. After leaving the mountains you head south to Japan's ancient and cultural capital Kyoto, historically significant Hiroshima and lastly follow in the footsteps of pilgrims and overnight in a temple at Japan's holy town of Koyasan.

FOR FULL TOUR OUTLINE & INCLUSIONS
<https://www.saizen.com.au/japan-world-heritage>

ITINERARY

DAY

- 1 *Arrive Tokyo*
- 2 *Tokyo - Harajuku, Skytree, Odaiba*
- 3 *Nikko - Toshogu Shrine and Nikko*
- 4 *Fujikawaguchiko - Mt Fuji sightseeing*
- 5 *Takayama - Old Town / Takayama Jinya / Takayama Matsuri Yatai Kaikan*
- 6 *Shirakawago - enjoy Shirakawago*
- 7 *Osaka - Universal Studios Japan*
- 8 *Kyoto and Nara - full day tour of Kyoto & Nara*
- 9 *Hiroshima - A-Bomb Dome / Peace Park and Peace Memorial Museum*
- 10 *Miyajima - Itsukushima Shrine*
- 11 *Koyasan - half day guided tour*
- 12 *Depart Japan*
- 13 *Arrive Australia*



TOUR HIGHLIGHTS

ASAKUSA SENSOJI TEMPLE



NIKKO TOSHOGU SHRINE



FUJIKAWAGUCHIKO



FUSHIMI INARI SHRINE KYOTO



HIROSHIMA PEACE DOME



KOYASAN KONGOBU-JI TEMPLE







HOW CAN A SCHOOL

TRIP TO JAPAN SUPPORT MY HISTORY STUDENTS?

Japan provides teachers with many opportunities to extend their students' learning. The 'Chrysanthemum and the Sword', Japan's cultural, political, religious and economic history can be explored first-hand with a History Tour of Japan.

We can provide history teachers with an itinerary that targets their specific curriculum requirements from ancient to modern history. Archaeologists agree that early settlement in Japan dates back as far as 100,000 years. The Jomon Period (10,500-300BC) is the earliest that has been studied. It is named after the 'jomon' or cord-marked pattern style of pottery of the period.

Haniwa are terracotta clay figures that were made for ritual use and buried with the dead as funerary objects during the Kofun period (300-600AD). The Shibayama Kofun Haniwa Museum and the National Museum of Japanese History can be included in your history tour itinerary. The Heian Period (794-1185AD) can be experienced and enjoyed in Kyoto. Japan's Modern History can be divided into four periods – the Tokugawa shogun military period (1600-1868), the Meiji rapid modernisation period (1868-1890), Imperial Japan (1890-1945) and Contemporary Japan (1945-present).

We can take your students from the early military bakufu government established in Kamakura to Tokugawa's Edo (now Tokyo) and on to Hiroshima and the Hiroshima Peace Memorial Museum.

**BRING YOUR
HISTORY TO LIFE!**

We can organise educational experiences such as a testimonial with an A-bomb survivor, tea ceremony with a trainee geisha, samurai experiences in Kyoto or a visit to the Mazda Factory and Museum.



**"THEY WERE SO HELPFUL AT
TAILORING AN ITINERARY
SPECIFICALLY TO SUIT US!"**

We had a fabulous stress free trip away with our students, thanks to Saizen Tours. They were so helpful at tailoring an itinerary specifically to suit us and I asked hundreds of questions which never seemed too much trouble. I would recommend Saizen Tours to any group that wants a fabulous trip away without any hassles!

- HILLCREST CHRISTIAN COLLEGE, VIC





TOP TIP!

**ADD A 2 NIGHT/3-DAY
FARM-STAY PACKAGE IN
KYOTO'S RURAL AREA OF
MIYAMA.**



Japan Discovery

This is the most popular route for first time visitors to Japan. Known as "Japan's Golden Route" it follows the historical Tokaido Highway starting in the modern capital city of Tokyo, cultural and historical Kyoto and poignant, soul-searching Hiroshima.



TOUR HIGHLIGHTS

KINKAKUJI



HARAJUKU



GHIBLI MUSEUM



TODAIJI TEMPLE



TOKYO DISNEYLAND



HIROSHIMA PEACE MEMORIAL PARK



ITINERARY

FOR FULL TOUR OUTLINE & INCLUSIONS

<https://www.saizen.com.au/japan-discovery>

DAY

- 1 *Arrive in Tokyo, Japan.*
- 2 *Tokyo - Asakusa – Sensoji Temple, Harajuku – Pop culture, Akihabara – Electric City*
- 3 *Tokyo - Tokyo Disneyland*
- 4 *Tokyo - Ghibli Museum, Shinjuku - Tokyo Metropolitan Government Buildings, Shibuya – Bright city lights and famous crossing*
- 5 *Kyoto - Gion – Geisha / Maiko Experience*

DAY

- 6 *Kyoto - Full Day Tour with guide - Kinkakuji, Nijo Castle, Kyoto Imperial Palace, Heian Jingu Shrine, Sanjusangen-do Temple, Kiyomizudera*
- 7 *Nara - Todaiji Temple and Great Buddha, Fushimi Inari Shrine*
- 8 *Hiroshima - Hiroshima Peace Park and Peace Memorial Museum, A-Bomb Survivor Testimony*
- 9 *Miyajima - Miyajima and Itsukushima Shrine*
- 10 *Depart Japan*
- 11 *Arrive Australia*

HOW CAN A SCHOOL

TRIP TO JAPAN SUPPORT MY PERFORMING ARTS STUDENTS?

Japan has a large and varied artistic community. Steeped in tradition and history the diversity of Japan's theatre provides endless opportunities for your Performing Arts students. From the traditional Kabuki and Noh Theatre to Bunraku Puppet Theatre to the modern dance shows and pop culture. Takarazuka Revue comprises an all-female cast in contrast to the traditional Kabuki played by all male actors. Both style of theatre provides lavish sets and costumes to mesmerise the audience and provides a performing arts opportunity that can only be experienced in Japan.

If you have a group of talented musicians, dancers or musical theatre students allow us to arrange performance opportunities in various cities throughout Japan.



PERFORMING ARTS TOUR HIGHLIGHTS

- Kabuki Theatre performance and back-stage tour in Tokyo
- Bunraku Puppet Theatre in Osaka
- Kyogen Theatre in Hiroshima
- Takarazuka in Osaka
- Maiko dance performance in Kyoto
- Gion Corner home to seven different traditional performing arts under one roof
- Musical performance opportunities in Matsumoto
- Appear in a Ninja Show at Eigamura
- Disneyland shows
- Universal Studios shows and Harry Potter World
- Ochanomizu Tokyo's music paradise with musical instrument shops galore
- Performance opportunities throughout Japan





**"PROVIDED THE BEST SERVICE
THAT I HAVE EVER ENCOUNTERED
FROM A TRAVEL AGENT."**


I was very impressed with the materials and overall support provided by Saizen and will certainly be contacting you again when planning our next tour. I have travelled extensively as an individual and on educational tours and can honestly say that you provided the best service that I have ever encountered from a travel agent.

- MORTLAKE COLLEGE, MORTLAKE VIC









"SAIZEN TOOK THE STRESS OUT OF THE ORGANISING BEFORE THE TRIP AND THE EXCURSION ITSELF!"

Our school has now been on six school excursions to Japan. Five of these were booked through Saizen Tours. The first trip I did I organised the whole thing myself. Since finding Saizen I would never go back to that and would not recommend it! Saizen Tours has been fabulous and I have never been able to fault them. I have travelled a lot in Japan and feel I know it very well; however, booking through Saizen took the stress out of the organising before the trip and the excursion itself. The detail in the teacher's tour handbook, fabulous student worksheets and all the other extras from Saizen I could not have done without. It certainly helped every trip to run smoothly. They also have some great ideas of places to visit off the beaten track. Every one of those places we have been to, I would love to revisit. Thank you to the fabulous team at Saizen.

- ST PHILOMENA'S SCHOOL, MOREE NSW

Modern Japan

Ultra-modern Japan is the ultimate destination for students enthusiastic about anime, manga and cosplay. Students can enjoy the activities and experiences in contemporary Japan whilst teachers can integrate modern society into a variety of curricular studies.



TOUR HIGHLIGHTS

AKIHABARA



OSAKA KAIYUKAN AQUARIUM



UNIVERSAL STUDIOS JAPAN



TOP TIP!

IN DOWNTOWN OSAKA DON'T MISS THE OVAL-SHAPED DOTONBORI FERRIS WHEEL, THE ROCKSTAR REPTILE CAFE OR LEGOLAND DISCOVERY CENTER OPPOSITE THE AQUARIUM.

ITINERARY

FOR FULL TOUR OUTLINE & INCLUSIONS

<https://www.saizen.com.au/modern-japan>

DAY


- 1 *Arrive in Tokyo, Japan.*
- 2 *Tokyo - Asakusa – Sensoji Temple, Harajuku – Pop culture, Akihabara – Electric City*
- 3 *Tokyo - Tokyo Disneyland*
- 4 *Tokyo - Ghibli Museum, Shinjuku - Tokyo Metropolitan Government Buildings, Odaiba – Miraikan, Rainbow Bridge, Venus Fort, Teamlab*
- 5 *Fuji - Depart for Fujikawaguchiko Mt Fuji*
- 6 *Fuji - Fuji-Q Highland Park*

DAY

- 7 *Osaka - Travel to Osaka by shinkansen. Osaka Kaiyukan Aquarium*
- 8 *Osaka - Shinsaibashi, Den-Den Electric Town, Doguya Suji*
- 9 *Kyoto - Full Day Kyoto Tour with guide - Kinkakuji, Nijo Castle, Kyoto Imperial Palace, Heian Jingu Shrine, Sanjusangen-do Temple, Kiyomizudera*
- 10 *Osaka - Universal Studios Japan*
- 11 *Depart Japan*
- 12 *Arrive Australia*







" WE WILL DEFINITELY
BE USING SAIZEN
TOURS NEXT TIME
WE ARE TRAVELLING
TO JAPAN! "

Although I have taken many school trips to Japan in the past, this was the first school trip for students from Hunter Sports High and my first time to use Saizen Tours. They were amazing. Their planning and documentation was meticulous and were always so helpful and supportive throughout the process.

My students had a wonderful time in Japan. They enjoyed the many planned activities with one of the highlights being the Maiko Experience at Gion. I highly recommend Saizen Tours, and we will definitely be using Saizen Tours next time we travel to Japan!

- HUNTER SPORTS HIGH SCHOOL, NSW

Japan Stem Tour

A Japan STEM Tour will prepare your students for their future career in a modern world. Return economy airfares, accommodation, transport, chartered coaches, guides and entrances are all included in this exciting tour.



TOUR HIGHLIGHTS

MIRAIKAN



ODAIBA TOKYO



UNIVERSAL STUDIOS JAPAN



OSAKA CITY



SHINKANSEN



TSUKUBA SPACE CENTER



ITINERARY

FOR FULL TOUR OUTLINE & INCLUSIONS

<https://www.saizen.com.au/stem-10-day-tour>

DAY

- 1 *Arrive in Tokyo, Japan*
- 2 *Tokyo - Panasonic Centre, Sony Explora Science, Miraikan, Tokyo Megaweb, Teamlab Borderless Mori Digital Museum*
- 3 *Tokyo - Meiji, Harajuku, Sky Circus Sunshine 60 Observatory*
- 4 *Tokyo - Tokyo Disneyland*
- 5 *Tokyo - Science Square Tsukuba, Tsukuba Space Centre Museum, Cyberdine Studio Tsukuba.*

DAY

- 6 *Kobe & Osaka - Hanshin Earthquake Museum, Osaka Science Museum, Osaka Castle*
- 7 *Osaka - Universal Studios Japan*
- 8 *Osaka - Kansai Recycling Systems, Osaka Kaiyukan Aquarium, Maishima Incineration Plant*
- 9 *Depart Osaka*
- 10 *Arrive Australia*



TOP TIP!

ADD ANOTHER DAY AND TAKE A TRIP TO YAMANASHI TO VISIT THE MAGLEV EXHIBITION CENTER AND SEE THE TESTING TRACK OF THE FASTEST BULLET TRAIN IN THE WORLD.







HOW CAN A SCHOOL

TRIP TO JAPAN SUPPORT MY STEM STUDENTS?

Science, technology, engineering, and mathematics, known collectively as STEM, is promoted and nurtured in Australian schools in order to prepare students to address the major challenges of the twenty-first century. The study of STEM subjects and the STEM curriculum nurtures student's creativity, fosters literacy and cultivates skills such as problem-solving and decision-making. Associated with this are the other benefits of STEM education such as developing personal and communication skills, working together as a team, building confidence and increasing resilience.

**JAPAN IS ONE OF THE
BEST DESTINATIONS
FOR SCHOOLS THAT
HAVE A STEM FOCUS**

Japan is one of the best destinations for schools that have a STEM focus with many sight-seeing opportunities and hands-on experiences available to excite students. By taking your students on an educational tour to Japan you can provide them with a powerful supplement to their learning by opening their eyes to another country's technological advancements and increase their motivation to continue with their STEM studies. They will see real-life applications of STEM that they may not be used to and be inspired to think of innovative ways their learning could benefit their own future as well as the global community.

Your students will visit the National Museum of Emerging Science and Innovation (Miraikan) and see the incredible developments in Japanese technology. They will marvel at the futuristic Cyberdyne Robotics Laboratory in Tsukuba Science City, be fascinated by the digital art at Teamlab Borderless Mori Digital Museum and enjoy the high speed shinkansen bullet trains.





"ONCE A YEAR
GO SOMEPLACE
YOU'VE NEVER
BEEN BEFORE"

- DALAI LAMA

御詠歌奉納於山
民族舞蹈踊於山
說教於日相

坂下雅裕夫人保阪

苗間秋津夫人金田

月の言世



Japan Alps

Start in the bustling metropolis of Tokyo and then leave the city behind to travel to popular and historical cities in the Japan Alps. Step back in time, wander the traditional streets and enjoy the atmosphere of ancient Japan.

TOP TIP!

Add an extra night in Kanazawa and visit Yunokuni no Mori craft village - located in over one hundred acres of prime natural forest featuring a cluster of traditional Japanese houses. Within each dwelling lies an introduction to Japanese traditional handicrafts and Kaga culture. Become part of the tradition and try these handicrafts for yourself. Come and see the fascinating handicrafts and outstanding skills that are admired throughout the world.

FOR FULL TOUR OUTLINE & INCLUSIONS
<https://www.saizen.com.au/japan-alps>

ITINERARY

DAY

- 1 **Arrive Tokyo, Japan**
- 2 **Tokyo** - Asakusa - Sensoji Temple, Harajuku - Pop culture, Akihabara - Electric City
- 3 **Tokyo** - Tokyo Disneyland
- 4 **Tokyo** - Ghibli Museum, Shinjuku - Tokyo Metropolitan Government Buildings, Shibuya - Bright city lights and famous crossing
- 5 **Kanazawa** - Depart to Kanazawa by shinkansen, Kenrokuen Garden and Kanazawa Castle
- 6 **Kanazawa** - Fully guided one-day program to include: Gold-leaf chopsticks decorating experience, Geisha district and Samurai district
- 7 **Shirakawago** - Cross the alps by coach to Shirakawago and enjoy a self-guided visit to this World Heritage listed village.
- 8 **Takayama** - Continue across the alps by coach to Takayama and wander the ancient streets of Takayama
- 9 **Takayama** - Takayama Jinya (manor house), Takayama Yatai Kaikan Hall (Hall of the Festival Floats), Hida Folk Village.
- 10 **In Transit** - Depart Japan
- 11 **Arrive Australia**



TOUR HIGHLIGHTS

KANAZAWA



TAKAYAMA YATAI KAIKAN



SHIRAKAWAGO GASSHO-ZUKURI



HOW CAN A SCHOOL

TRIP TO JAPAN SUPPORT MY SPORT STUDENTS?

Sport in Japan forms a very significant part of Japanese culture. Sumo is considered Japan's national sport. Judo, karate, kendo and aikido are popular forms of martial arts. Both the traditional sports such as sumo and martial arts and introduced Western sports are popular with both participants and spectators. The crowds at a professional baseball game are a spectacle often worth watching more than the game. There are cheers, fight songs, dancing and constant entertainment. Cheering and joining in the fun is a huge part of the experience!

Japan is therefore the perfect destination for your sporting students with many world-class stadiums and this eclectic mix of traditional and modern sports for your school group to watch or try. If you have a sporting group keen to play in Japan, we can assist in arranging games with host schools and clubs throughout the country. We combine games in various cities along with other physical activities that will keep your students engaged all day long. Soccer and baseball groups are our speciality.

SPORTING TOUR HIGHLIGHTS

- Sumo Tournament
- Get up close and personal with the Sumo Wrestlers in their training stables
- Professional baseball game at Tokyo Dome
- Kendo experience
- Japanese archery in Nagano
- Jigokudani Snow-Monkey Park Hike
- Kyoto Back-street Cycling Tour
- Karate in Okinawa
- Ski and snowboard in Hokkaido





翔天狼
三

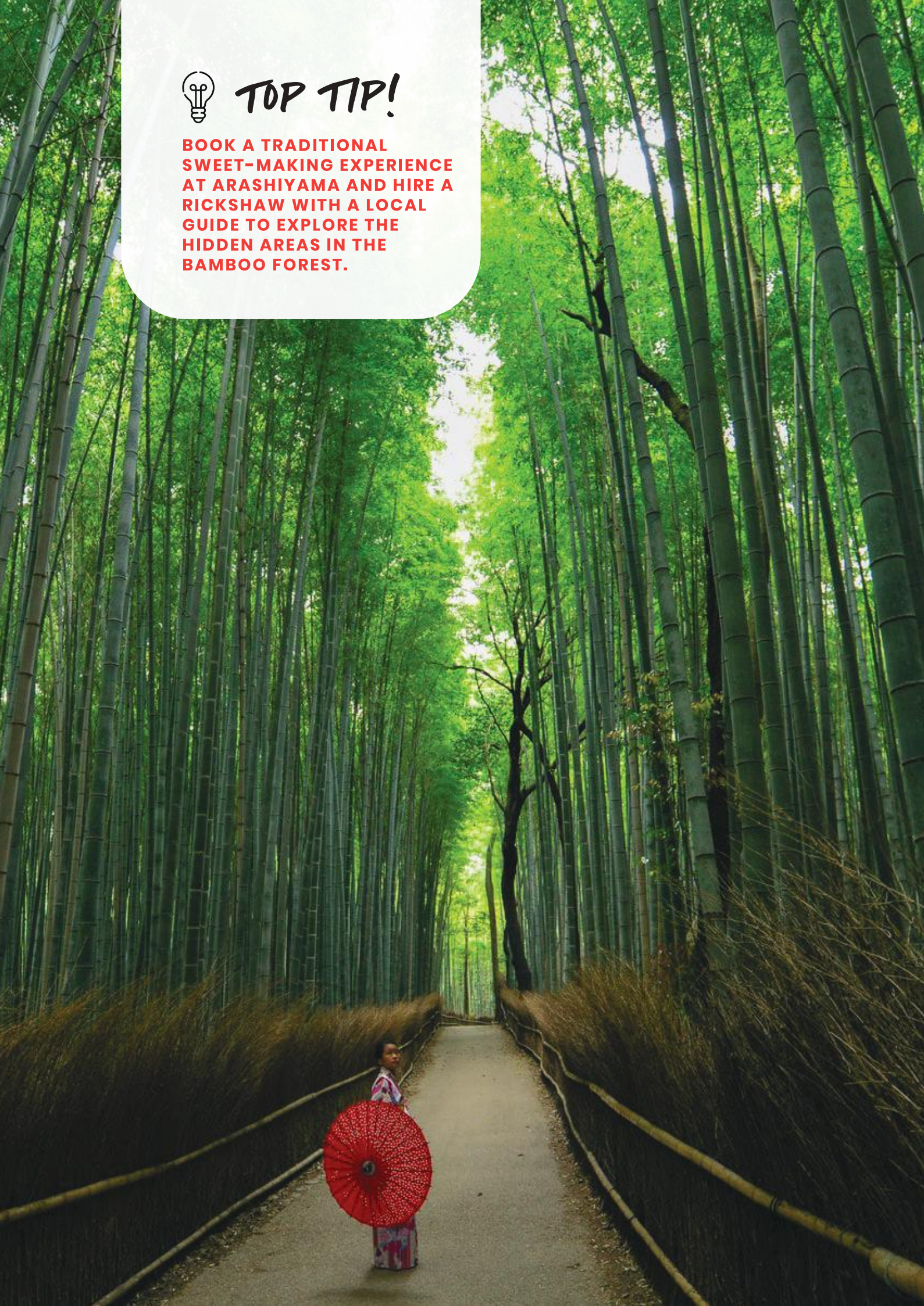
翔天狼
三

豊市



TOP TIP!

BOOK A TRADITIONAL SWEET-MAKING EXPERIENCE AT ARASHIYAMA AND HIRE A RICKSHAW WITH A LOCAL GUIDE TO EXPLORE THE HIDDEN AREAS IN THE BAMBOO FOREST.



City Connections

This tour combines the best of modern and traditional Japan without stretching the budget. Starting in Tokyo and finishing in Kyoto with a shinkansen ride in between. This itinerary is perfect for primary school students, inaugural tours to Japan and schools with a very limited budget.



TOUR HIGHLIGHTS

ASAKUSA



TOKYO DISNEYLAND



HARAJUKU



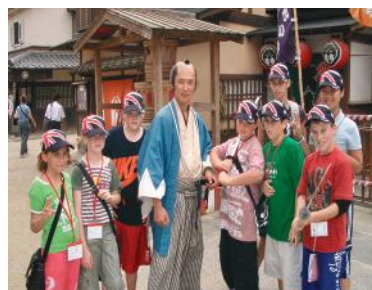
SHINKANSEN



ARASHIYAMA



EIGAMURA



ITINERARY

FOR FULL TOUR OUTLINE & INCLUSIONS

<https://www.saizen.com.au/city-connections>

DAY

- 1 *Arrive in Tokyo, Japan.*
- 2 *Tokyo - Asakusa – Sensoji Temple, Harajuku – Pop culture, Akihabara – Electric City*
- 3 *Tokyo - Tokyo Disneyland*
- 4 *Tokyo - Ghibli Museum, Shinjuku - Tokyo Metropolitan Government Buildings, Shibuya – Bright city lights and famous crossing*
- 5 *Kyoto - Gion – Geisha / Maiko Experience*

DAY

- 6 *Kyoto - Full Day Kyoto Tour with guide - Kinkakuji, Nijo Castle, Kyoto Imperial Palace, Heian Jingu Shrine, Sanjusangen-do Temple, Kiyomizudera*
- 7 *Nara - Todaiji Temple and Great Buddha, Fushimi Inari Shrine*
- 8 *Kyoto - Toei MovieLand Eigamura, Arashiyama and the Sagano Bamboo Forest*
- 9 *Depart Japan*
- 10 *Arrive Australia*

"SOMETHING YOU
CAN'T GET WITH
OTHER TRAVEL
AGENTS!"

The reason why I keep going back to Saizen Tours whenever I take student groups to Japan, is for their thorough and specific knowledge of Japan, something you can't get with other travel agents.

- SACRED HEART COLLEGE, PERTH WA





Beyond Tokyo Tour

Beyond Japan is a great for schools with a limited budget but want to explore and experience a little more than bustling Tokyo. This tour covers a variety of curriculum areas including STEM, Humanities and Languages.



TOUR HIGHLIGHTS

TOKYO MEGAWEB



USHIKU DAIBUTSU



SUIFU LANTERN MAKING



TOP TIP!

Add an extra day in Tokyo and travel to the historical town of Kamakura. Once the political capital of Japan ruled by shoguns and famous for its Giant Buddha, temples and shrines.

ITINERARY

FOR FULL TOUR OUTLINE & INCLUSIONS

<https://www.saizen.com.au/beyond-tokyo-tour>

DAY

- 1 *Arrive in Tokyo, Japan.*
- 2 *Tokyo* - Panasonic Centre, Miraikan, Tokyo Megaweb, Teamlab Borderless Mori Digital Museum
- 3 *Tokyo* - Meiji Shrine, Harajuku, Tokyo Skytree and Akihabara.
- 4 *Tokyo* - Tokyo Disneyland
- 5 *Ibaraki* - Science Square Tsukuba, Tsukuba Space Centre Museum, Cyberdine Studio Tsukuba.
- 6 *Ibaraki* - Kairakuen Garden and Suifu Lantern Making Experience

DAY

- 7 *Ibaraki* - Ushiku Daibutsu, Sutra Copying Experience, Hanko Making and Tatami Making Experience
- 8 *Depart Japan*
- 9 *Arrive Australia*



"LIFE IS EITHER
A DARING
ADVENTURE OR
NOTHING AT ALL"

- HELEN KELLER









WHY YOUR STUDENTS

SHOULD EXPERIENCE A HOMESTAY

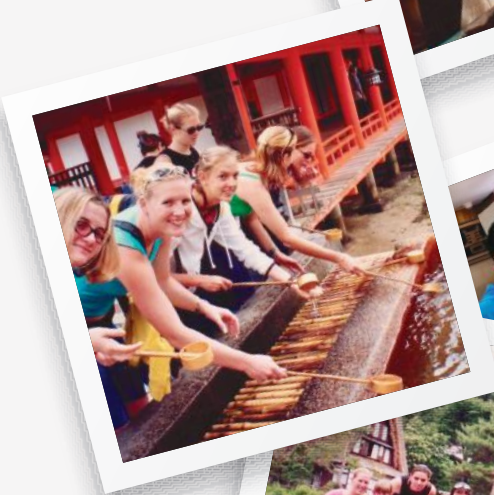
A homestay is the ideal opportunity for your students to become fully immersed in the Japanese culture with endless opportunities to use their language skills in a real-life setting. Some students may be apprehensive at first, but this experience is usually ranked the most memorable and exciting by the students. Quite often there are tears when it is time to say goodbye with many students wishing it was longer. Lifelong friendships are made, and the lessons learnt with a family cannot be taught in a classroom. Saizen Tours offers a range of homestay experiences from rural farmstays in traditional thatched houses in Miyama to the mountain city of Matsumoto in the Japanese Alps. All of our programs include a visit to a local school where the students will enjoy a school exchange and participate in Japanese classes. Each area offers varied cultural hands-on experiences for the remainder of the stay. Examples include paper-making at Tateiwa Paper Village in Matsumoto, mochi-pounding and bamboo basket craft in Miyama, Okinawan traditional dance in Naha and soba-making in Lake Biwa. Our hosts in each city will ensure your students are cared for in a safe environment and return home with a deeper understanding of the Japanese way of life.

**"THE HOMESTAY FAMILIES
COULDN'T HAVE BEEN
MORE CARING."**

We can't say enough positive things about Matsumoto! Absolutely FABULOUS. Teddy was just so good to our group – the school visit and tour around Matsumoto was excellent...the homestay families couldn't have been more caring. The tour of the castle with Teddy and his group of volunteers was outstanding. Soba making and doll making and paper fan making was very enjoyable. We teachers LOVED the Minshuku – we were the only people staying there and the food was terrific. Owned and run by lovely people. Matsumoto Snow Monkey Park was great fun. We all loved Matsumoto which was a lovely contrast to the hustle and bustle of Toyko.

- ALL HALLOWS SCHOOL, BRISBANE QLD

SCHOOLS FROM ALL OVER AUSTRALIA



TRAVELLING WITH SAIZEN TOURS





FOR MORE INFORMATION CONTACT

Saizen Tours

Phone: 07 5564 0133 Fax: 07 5564 0291

Email: tours@saizen.com.au

PO Box 10280, Southport Business
Centre, QLD, 4215