

JUNE 2026

Tatsfield Parish Magazine

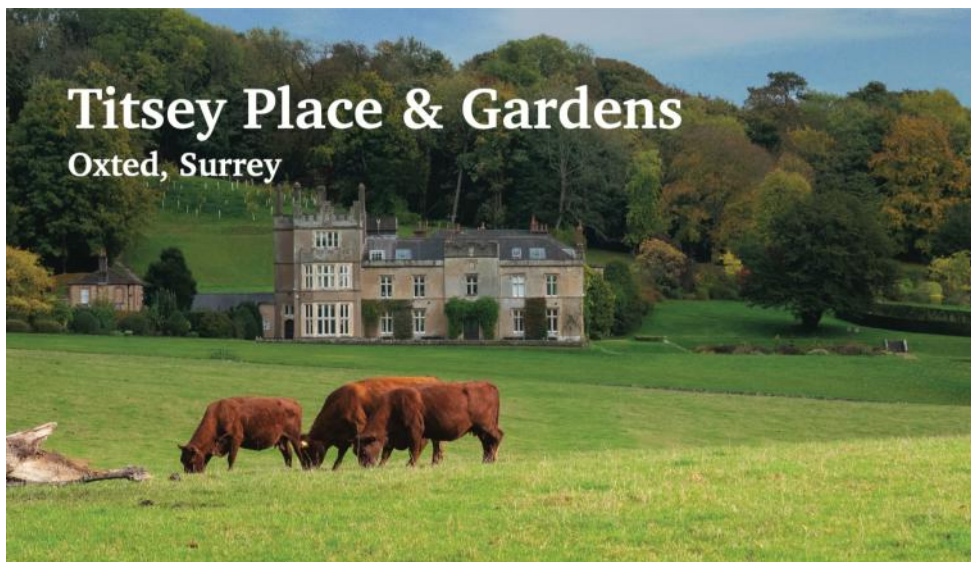


www.tatsfield.org.uk

£2 One copy FREE to each household

Titsey Place & Gardens

Oxted, Surrey



Come and spend an exciting day exploring our historic manor house and beautiful gardens

Titsey Place, with its stunning garden, lakes, woodland walks, walled kitchen garden and park offering panoramic views, enchants visitors. Enjoy the fine family portraits, furniture, a beautiful collection of porcelain and a marvellous set of four Canaletto pictures of Venice. After touring the house and strolling through the gardens, visitors can enjoy delicious refreshments in our tea rooms.

Open Season: 16 May to 30 Sept 2026

Opening Days: Wed & Sat - All facilities

Sun - Garden & tea room only

Bank Holidays: Open 25 May & 31 Aug 2026

NGS Days: Open 31 May, 28 June, 26 July,
30 Aug 2026

Opening Times: 1pm to 5pm

House Tours: 1.30, 2.30, 3.30pm

Woodland Walks: Open all year round

Info Line: 07889 052461 www.titsey.org



Sheree's Store & Tearoom



Specialty Teas & Coffees

Delicious cakes

Confectionary

Handmade cards

Locally made arts & crafts

Wide range of products

Locally sourced & Fairtrade

Newspapers

PayPoint

Artisan Breads, Pastries, Fresh Fruit and Vegetables Every Saturday

Craft workshops held in house. See our Facebook page for details

Call us on: 01959 928181

Or join us on Facebook

at: 'Sheree's Store and Tearoom'

2 The Parade

Westmore Green

Tatsfield, TN16 2AS



TATSFIELD



Garage Ltd

01959 577347



MOT - Servicing - Repairs on all makes of vehicle.

- Tyres • Batteries • Brakes • Suspension
- Air Con • Clutches • Diagnostics • Welding

Please call Simon or just pop in.

Established since 2014

5-7 Paynesfield Road • Tatsfield • TN16 2AT • tatsfieldgarage@gmail.com



**bands
&
events**

Pool, snooker
& darts
Bingo, quizzes
& sports



Your friendly
local
social

**Mon - Thu ~ 3pm - 11pm
Fri - Sat ~ 12pm - late
Sun ~ 12pm - 11pm**



Tatsfield Village Club
New members welcome

email: tvsecretary@btconnect.com or pop in and see us



tvsecretary@btconnect.com
or pop in and see us

Tuition

Lady teacher/tutor with 30 years experience offers
one to one tuition.

Coaching to improve confidence and competence.
Proven results

References available

- 7-11 years Key Stage 2 Numeracy and Literacy
- Entrance Exam Practice
- 11+ Practice
- SATs Practice
- Year 7 Booster English



Mob: 0777 351 7063

Limpsfield, Oxted, Tatsfield and Westerham area

**DEIGE'S
HELPING HANDS**



**Home Care Provider
Personal Domiciliary Care**

Affordable and flexible care delivered to your own home.
We have provided care for the elderly for over ten years
Professional, consistent & reliable service
Flexibility - we will work with you to tailor a suitable care plan
that meets your requirements

Personal Care	Social Care Trips
Companionship	Shopping & Laundry
Meal Preparation	Dementia Care
Well being checks	Care Giver Respite

Contact Deige



☎ 07981182773

JAYCY

Painting, Decorating

Free estimates

Nick Walsh

01959 577684

Mobile
07887528264

A25 Taxis

Your reliable Tatsfield taxi
Service for all occasions

Airport transfers
Taxi hire
Occasion/Wedding hire
Corporate hire
School run service (DBS checked)

☎ 01959 575957

✉ A25taxis@live.co.uk

The Chartwell Cancer Trust

House Clearance and Waste Disposal Services

Professional, sympathetic clearance, collection and waste management solutions you can rely on making a stressful task, hassle free. Donated goods are resold through our network of charity shops, the proceeds dedicated to our fundraising projects.



Items unfit for sale are recycled or disposed of safely at a competitive rate, ensuring waste is kept to a minimum.

Our charity shops are located in Selsdon, Tatsfield and Peckham and our services are available across these areas as well as London, the South-East and Kent.



T: 07777 761411

W: chartwellcancertrust.co.uk

E: collections@chartwellcancertrust.co.uk

Committed to improving the lives of cancer and leukaemia patients and oncology communities by making a real difference to cancer care.



Based in Tatsfield
01959 577718
07946 304087

acaciatreesurgeons@gmail.com

We provide a wide range of tree services:

- Complete Tree and Stump Removal
 - Thinning and Pruning
 - Crown Reduction
 - Lifting and Reducing
 - Site Clearance
- 24 Hour Emergency Call Out
 - Chippings Delivered
 - All fencing undertaken

**NPTC QUALIFIED
& CHAS REGISTERED**

Call us today for a free estimate

Celebrating over 80 years of professional tree care

BIGGIN HILL PLASTERING



**NO JOB TOO
SMALL FREE
ESTIMATES**

07710622237

or

01959540615



- Community physiotherapy for older people -

Jennifer Willis

BSc (Hons) Physiotherapy MCSP, HCPC

Fallen recently? Suffer with pain?

Balance and mobility not as good as they used to be? Lost confidence when moving around?

Suffer from a Stroke, Dementia, PD, MS, frailty?

Feel weaker or fatigued after an episode of COVID-19

..then East Surrey Physio can help

Jennifer will visit you in your own home, residential home, or nursing home for your physiotherapy sessions.



07939 461 416

✉ jenniferwillisphysio@yahoo.com

🌐 www.eastsurreyphysio.com



Warlingham - Oxted - Tatsfield - Caterham - Woldingham



Westerham Heights Garden Centre

What We Offer:

- A wide range of plants, shrubs, and trees
- Seasonal flowers to brighten your space
- Expert advice from friendly, local gardeners
- Quality tools, seeds, and soil
- Logs and calor gas
- Fencing

Gift & Homeware Shop

Looking for something unique?

Step inside our homeware shop to discover:

- gifts for every occasion
- Stylish decor and one-of-a-kind treasures
- Locally made and handcrafted items
- Frenchie paint



01959 571545



westerham.heights@yahoo.com



Main Road, Westerham Hill,
TN16 2HW

Your One-Stop Shop for Garden Gifts,
and Good Vibes



6 Westmore Road
Tatsfield
TN16 2AX



Gift Certificates
available
for all therapies

Lorraine Maddison

McTimoney Chiropractor
07817 548133
rainymad@icloud.com

Other therapies available including reflexology

www.sourcehealthclinic.co.uk



Pre School for children 2+

Tatsfield Village Hall

Funding available for 3 & 4 year olds
and some 2 year olds

Monday to Thursday

New opening times
8:30am ~ 3:20pm

Friday

8:30am ~ 1:00pm

Morning, afternoon and whole day sessions
available

~Clubs included in some sessions ~
Science Club, Boom Arts Academy, Gardening Club & Messy Club

Phone : 01959 540775

Email: office@littleacornstatsfield.co.uk
www.littleacornstatsfield.co.uk

Charity number: 1024480



ARE YOUR LOCKS BEHAVING BADLY?

A Local Trusted Family Business Since 1989
We Value Old Fashioned Customer Service

Christopher
THE LOCKSMITH

 Specialist in UPVC & Wooden Doors

 No Call Out Charge  All Work Fully Guaranteed

 No Fix No Fee  10% Senior Citizen Discount



For More Advice & Help
Call Christopher:

07772 111 222

www.christopherthelocksmith.co.uk



IQ Wealth Management



INVESTMENTS



PROTECTION



PENSIONS

As a financial advice firm, we provide advice on a wide range of financial matters. From investment advice to retirement planning and managing your estate, we ensure as much as possible goes to the people you want to benefit from your hard work. Our initial 45 minute meeting is free, either at our offices in Tatsfield or your home.

01959 571300

IQ Wealth Management, Aileen McHugo Building, Westmore Green, Tatsfield TN16 2AG

Approver Quilter Financial Limited 15/02/2024

SHUTTERS

HARDWOOD - VINYL - FAUXWOOD
63mm or 76mm or 89mm Louvres
Clear View, Centre or Offset Tiltrods
Numerous colour options



BLINDS



Verticals | Rollers | Venetians | Romans | Curtains | Pleated

FREE Professional design advice on all of our products
Appointments in the comfort of your own home - at times that suit YOU

For SHUTTER Quotes
Please Email:
info@benasa.net

BENASA
The difference is in the detail

To discuss your requirements for BLINDS
Please Call:
01959 509 179



Monkey Puzzle Day Nursery Tatsfield

01959 928 427

Old School, Church Hill, Tatsfield, Surrey TN16 1JX
www.monkeypuzzletatsfield.co.uk

@monkeypuzzletatsfield



- Highly qualified, well-motivated staff
- Beautifully appointed, bright open rooms
- Large outdoor play area
- Open 7:30am-6:30pm, 51 weeks of the year
- We accept 9 month, 2, 3 and 4 year Government funding

CLASSES AT TATSFIELD

every FRIDAY

AWARD-WINNING PERFORMING ARTS SCHOOL



WE'RE THE ONLY SCHOOL IN SOUTH LONDON OFFERING STREET DANCE, BREAK DANCE & FREESTYLE EXAMS WITH THE IMPERIAL SOCIETY OF TEACHERS OF DANCING (ISTD) – WITH A 100% PASS RATE AND 100% HONOURS.

Tots Boom Street dance: 4.15-4.45pm

Tots/LJ Boom Musical Theatre: 4.45-5.15pm

Lower Junior Street dance 5.15-6.00pm

Boom Theatre & Singing 6.00-6.45pm

Junior/ UJ Boom Street dance 6.45-7.30pm



SATURDAY AND OTHER WEEKDAY CLASSES AVAILABLE AT SANDERSTEAD, SHIRLEY AND KENLEY



BOOK NOW: WWW.BOOMARTSACADEMY.COM

Scan me to book a class!



Hazelwood School

www.hazelwoodschool.co.uk
01883 733841



Dare to
IMAGINE



Dare to break down the conventions of the everyday
and *discover* something new.

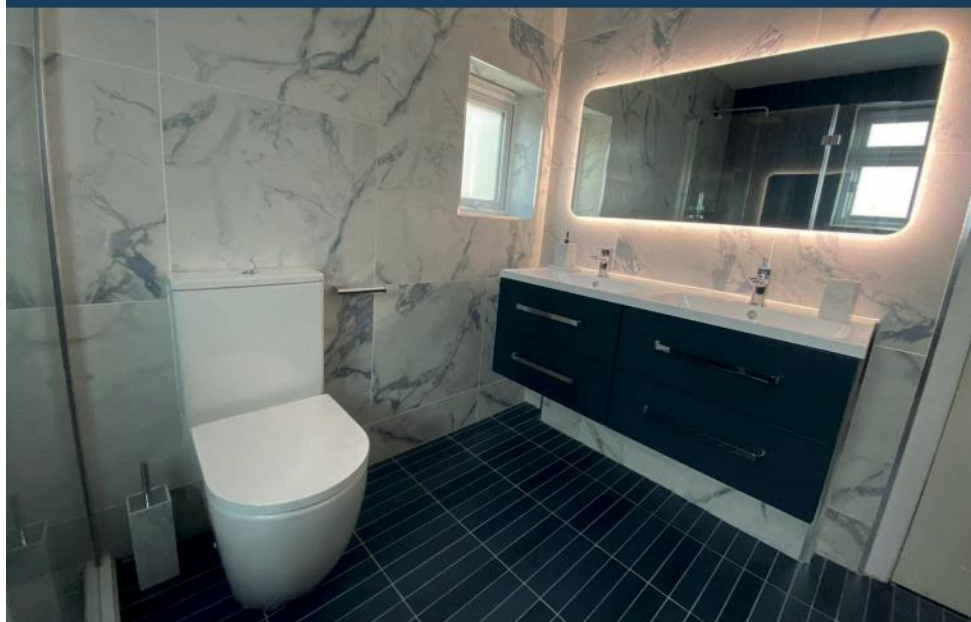
Discover Hazelwood, an exceptional prep school for children aged 9 months to 13 years, nestled in 25 acres of Surrey woodlands, offering one-of-a-kind learning opportunities, state-of-the-art facilities, and boundless possibilities.

Discover more by booking a tour today.
Admissions@hazelwoodschool.com

   @HazelwoodSchool



LILLEY'S BATHROOMS



Start Your Dream Bathroom Today

At Lilley's bathrooms we pride ourselves in providing our customers with a professional service and high levels of expertise with many years design experience. We use quality products from leading, reputable manufacturers. Showcasing a variety of styles, our showrooms provide an abundance of bathroom inspirations, with realistic working bathroom displays.

A free Design Service | Free Measure Up | Free Local Delivery

The use of 4D software Virtual Worlds, where you can "step in" to your space that has been created before the work begins

The Studio

66-70 Footscray Road, Eltham, London SE9 2SU

0208 8507179

The Gallery

157 Main Road, Biggin Hill, Kent TN16 3JR

01959 572000



lilleysbathrooms.co.uk

Tatsfield Aquatics & Reptiles

Tatsfield Aquatics Ltd
Approach Road
Tatsfield
TN16 2JT
01959 571828

Info@tatsfieldaquaticsandreptiles.co.uk
www.tatsfieldaquatics.com

Retail - Landscaping - Maintenance



RST Glass and Glazing Ltd

14 Rosehill Road, Biggin Hill, Kent TN16 3NF

01959 571200

✉ **info@rstglassandglazing.co.uk**

Windows, door & conservatories
Double glazed units
Misted and broken units
Handles, hinges and locks replaced
Glass table tops cut and polished
Patio door wheels/runners
Trade counter
Burglary damage repairs
All insurance work
Contract Glazing



FENSA

APPROVED
WINDOW & DOOR INSTALLER



YOUR SPACE | SPOTLESS | ALWAYS

CLEANING SERVICES

Our local house cleaning team will ensure your home is always in immaculate condition, ready for you to relax and enjoy.

Call to book your regular weekly, fortnightly or monthly clean



07517 175 872



Video Evolution
VIDEO LED MARKETING

Call Now on 01959 447525

YOUR LOCAL VIDEO PRODUCTION COMPANY

VIDEO

PHOTO

DRONE



SPECIALISTS IN BUSINESS OVERVIEW VIDEOS, PRODUCT RELEASE, SERVICES EXPLANATION & VIDEO TESTIMONIALS

Discover how we can help your ideal, local clients, find you online when they need your service

CONTACT ANDY ON: 01959 447525 | andy@videoevolution.co.uk



Tatsfield Martial Arts

JUDO, JU JITSU & COMBAT FITNESS

Head Coach: Adam Plinston

Judo 6th Dan / Ju Jitsu 4th Dan. UKCC Level 2 Coach

Club coaches are first aid trained, DBS checked and insured via NGBs
Children and adult classes, from age 4+ on Wednesdays, Thursdays,
Fridays & Saturdays

Gain confidence. Learn self-defence. Have fun getting fit!

www.tatsfieldmartialarts.com

07956 956095

tatsfieldmartialarts@gmail.com

Private Guitar and Bass Lessons Based in Tatsfield

Experienced tutor with 20+ years experience

Suitable for all ages and abilities

No instrument required, you can use ours!

Learn to play your favourite songs, learn theory or
work towards your grades



**20% OFF YOUR
FIRST LESSON
WHEN YOU
QUOTE 'TPM'**

Playing music relieves stress, boosts brain power and improves confidence!

Email: enquiries@mammothmusicacademy.com

Find us on Facebook & Instagram @MammothMusicAcademy

Mobile Hairdresser & Gel Nail Manicures

Based in Tatsfield

30 Years Experience

Kate

tel: 01959 573816

mobile: 07970 012194

Fully Insured

GELUX
PROFES



ADVERTISE HERE!

TO OVER 800
TATSFIELD HOUSEHOLDS
Tatsfieldmag@gmail.com



BEAUTY BY

Sarah St John

TATSFIELD

Permanent eyebrow makeup

Temple Spa glow up facials

Length, volume, and lift lashes

Nail designs shellac & polishes

Manicures & pedicures

Waxing & tinting

Please contact me for a FREE consultation

Sarah St John: **07946 343 067**

25 Years experience - Fully qualified & insured

Mobile Chiropodist

Chiropody undertaken in the
comfort of your own home



Mandy Gifford

M.Inst.Ch.P, H.P.C. registered

Registered Member of the
Institute of Chiropody
and Podiatry

Mob: 07944 763045



FITNESS CLASSES FOR EVERYONE



This is a 60 minute class which has been described as the strength & conditioning of ballet, and can be distinguished from other group fitness activities by the use of a ballet barre and its incorporation of movements derived by ballet.

CLASSES:

£12 PAYG or
£40 per month

Barre with Fi

Tuesday's: 6.15pm - 7.15pm

Thursday's: 6.15pm - 7.15pm

Tatsfield Village Hall
Westmore Green,
Tatsfield, TN16 2AG

For more information:
check out our website www.wellnesswithfi.co.uk
call me 07801 556 069

Produced for the Village by the Parish Magazine Committee under the authority of Tatsfield Church.

Editors • Tara Barry and Tracey Syrett

Chair • Debra Elsdon

Treasurer • Madie Langford (577114) **Distribution Managers** • Jim and Ruth Yeeles (577489)

Advertising Manager • Sarah Tait **Production** • Ruth Yeeles

CHURCH CONTACTS

St Mary's Church Office (Thurs 9.30-13.30)

Admin: Steve Tatler, The Parish Office, High Street, Limpsfield RH8 0DG.

Phone 01883 712512 / email stmoffice.lttm@btinternet.com.

Team Rector: Revd Helen Cook email: hjwcook@yahoo.co.uk

Curate: Debra Elsdon email: curate.lttm@gmail.com

Wardens: Marjory Broughton (01959 541059) / Chris Hancock (01959 577622)

St. Mary's Church Hall Bookings • Sheila Cook (577443)

COUNCIL CONTACTS

Parish Council: Clerk • Aileen McHugo Building, Westmore Green, Tatsfield TN16 2AG
clerk@tatsfieldpc.org.uk (07483 337461)

Chair • Kim Jennings email: kimjennings@tatsfieldpc.org.uk (577328)

Website • www.tatsfieldpc.org.uk

Tandridge District Councillor • Martin Allen, 38 Paynesfield Rd, Tatsfield TN16 2BG (577201)

Surrey County Councillor • Vacancy

OTHER CONTACTS

Village Hall Bookings Secretary • Helena Garcia-Mcleod (bookings@tatsfieldvillagehall.org.uk)

W.I. Hall Bookings • Pat Walsh (01959577684)

Parish Room Bookings • (07483 337461) email clerk@tatsfieldparishcouncil.org.uk

Tatsfield Primary School Head • Rachel Jewitt (577356)

Tatsfield Village Club • (577330)

Furze Corner Bookings • 07483 337461 clerk@tatsfieldparishcouncil.org.uk

Doctors • Stock Hill Surgery (580011) • Westerham Surgery (564949) • Oxted Medical Centre (01883 734000)

Village Website: www.tatsfield.org.uk

MAGAZINE CONTRIBUTIONS

We welcome contributions from village organisations and individual residents but reserve all editorial rights. We welcome letters commenting on items in previous issues or on anything else. Anonymous submissions will not be accepted. Organisations must include contact details in their submission, which will be published. Copy date for the Magazine is normally 16th of the preceding month, except for July/Aug and Jan/Feb double issues. Ideally contributions should be sent as a Word attachment by MIDDAY on the copy date in an email to: tatsfieldpm@gmail.com. Alternatively post to: Tatsfield Parish Magazine, 20 Shipfield Close, Tatsfield TN16 2AU.

Enquiries concerning advertising or loose inserts should be made to Sarah Tait (tatsfieldmag@gmail.com). All loose inserts need to be booked and approved at least ONE MONTH in advance of insertion.

Small Ads These are accepted only from Tatsfield or Titsey residents (No Trade) and are free of charge (Max 10 words plus phone number.) We will include them in the next issue space permitting.

Calendar Dates Our calendar usually covers six weeks or more from publication so please give us your dates in good time. If you don't want your event to clash with others why not check with us early?

Advertisements We take no responsibility for the goods and services advertised in the magazine.

Cover image: Tatsfield Village Hall by Jackie Copeman

EDITORIAL – SUMMER TEAS AT ST MARY’S!

Come rain, come shine from May 24th between 3pm and 5pm, tea, coffee, cake and scones (often lovingly homemade) will be served by a smiling member of one of our merry band of village volunteer teams.

One of my favourite memories when we moved into The Rectory in June 2024 is when I was sitting in the sunshine with my cuppa and a scone and suddenly saw a Spitfire sail through the skies against the backdrop of our beautiful North Downs. At other times hot air balloons and paragliders have been seen – as well as red kites and buzzards. But my favourite was the Spitfire!



It felt like a connection to the extraordinary history of this place – from our thousand-year-old church (or nearly, but what’s 50 years between friends?) to the traditions and continuity of the folk who populate Tatsfield; the huge range of activities, the support groups, the social gatherings.

Our little church raises some much-needed funds during church teas; it allows us to continue to keep our doors open and maintain church and hall. We are also able to support the Church Mission Society, the British Red Cross and the Chartwell Cancer Trust.

Visitors come from far and near; some to celebrate their birthdays, some to refuel on a walking tour. Enjoying the company, the quiet, the magnificent view, a moment of reflection in the church.

You will all be most welcome and I hope to see you there!

Blessings, Reverend Debra



Our cover this month features a painting of Tatsfield Village Hall by Jackie Copeman. Jackie has painted several Tatsfield village buildings and some pieces are available to view and buy in Sheree’s Store and Tearoom.

LETTERS

Dear Editor,

Good morning. I wanted to bring your attention to the chaos caused by an HGV using Church Hill. This road is totally unsuitable for these kinds of vehicles and subsequently caused a major traffic jam in both directions, as the lorry had to reverse down the lane.

This situation seems to be happening more often as these vehicles seem to be using Tatsfield as a 'cut through'.

We need new signs stipulating unsuitable for these types of vehicles, as the old ones have been removed or damaged. Also, would it be possible to have some kind of width restriction at both ends of the road, as the signs often seem to be ignored?

With the new planned housing developments in nearby Biggin Hill, this kind of situation will only increase, also in the adjacent road of Rag Hill.

Thank you for your attention.

Regards, Mr A Creed, (Local resident) 'Jayscroft' Old Lane, Tatsfield

TATSFIELD PARISH MAGAZINE, INCOME AND EXPENDITURE ACCOUNT FOR THE YEAR TO 31ST MARCH 2026

Income	£
Advertising	9265
Sales (including postage from Subscribers)	146
Donations from Village Organisations	875
Donations from Individuals	710
Bank Interest	73
	<u>11069</u>
Expenditure	
Printing	8038
Postage and Stationery	267
Sundry Expenses	459
	<u>8764</u>
Surplus in year	<u>2305</u>

Madie H Langford, Treasurer

TATSFIELD PARISH COUNCIL

Hello All. By the time you read this our new sign at the Village Hall will have been installed and the flower bed below replanted by the wonderful TIB group. I hope you all agree it is a lovely addition to our Village centre.

We received a Grant from our Surrey County councillor (Becky Rush at the time) to refurbish and bring new sporting facilities to the Multi Use Games Area (MUGA). This vastly underused asset has now had a facelift and can now offer Pickleball and Table Tennis to all, in addition to tennis, netball and football that are already played. (Further details of this separate in the magazine.)

The gable end of the Village Hall roof has needed some maintenance during the last month for which we also received a grant from the Lottery Fund. The grant is also covering the refurbishment and replacement of the car park bollards and lights.

As a result of winning these two grants we have available funds to spend on the repair of the Tatol bed which has been subjected to three accidents causing damage over the last year. The work on this will begin in July.

Our GoFundMe page to raise funds for a new childrens' playground has reached £5,212.63 which is an amazing amount so far. Looks like we are on course to meet the £10,000 target by October. Please do give what you can, especially if you're children have benefitted from the playground in the past, or are happily using it now. Look out for fundraising events coming up. You can still donate via the link on the banner on the Playground or from the post on Tatsfield Talk. Thank you all so much for all the support for this project.

AGM 18TH MAY 2026

Our Annual General Meeting was held on Monday 18th May. Kim Jennings was re-elected as Chairman and David Pinchin as Vice Chairman; Chair of Finance Committee was Jason Syrett. All our policies were reviewed and approved by the Council. Full Minutes of our AGM will be available on our website from 9th June.

PLANNING

Application 2026/380 Land adjacent to Junes Close, Goatsfield Road. Proposal: demolition of the existing buildings and erection of a self-build dwelling. Recommendation: the Parish Council Objects to this application.

Application 2026/287 Gorsey Down Farm, Ricketts Hill Road. Proposal: demolition of two agricultural barns. Erection of a self-build dwelling and ancillary equipment store/garage, alteration to existing farm track and its access with new gate, piers and fencing, the laying out of a private garden area, car parking spaces and electric vehicle charging point, waste collection area; associated infrastructure and landscaping. Recommendation: the Parish Council objects to this application.

Application 2026/315 Hazeldene, Ricketts Hill Road. Proposal: demolition of existing conservatory and rear extension. Erection of single storey rear extension, alterations to

garage door and insertion of new windows, conversion of loft with dormers to the front and rear. Recommendation: Tatsfield Parish Council objects to this application.

Application 2025/1531 Motorway service Area, Clacket Lane. Proposal: construction of a drive thru lane and an extension to the amenity building to provide the pay and collection location, alongside required civil works. Recommendation: Tatsfield Parish Council Objects to this application.

Application 2026/336 3, Paynesfield Road. Proposal: demolition of the existing dwelling and erection of a replacement self-build dwelling. Recommendation: Tatsfield Parish Council Objects to this application.

The Full Planning report can be found on the TDC Planning Portal and Tatsfield Parish Council Website.

The next meeting will take place on **Monday 8th June 8pm** Aileen McHugo Building.

Kim Jennings Chairman

Tatsfield Parish Council Email: kimjennings@tatsfieldpc.org.uk

TANDRIDGE DISTRICT COUNCIL

As it happened, the Reform Party that won votes and seats across the country did not fare as well as they would have hoped across East Surrey as they did elsewhere. They won five seats in the East and nine in the West and as a result, both East and West Surrey councils going forward will have Liberal Democrat administrations. The Liberal Democrats secured 40 of the 72 seats in East Surrey. The total number of verified ballot papers issued was 199,485 from an electorate of 406,177. Less than 50% nonetheless this was considered a good turnout.

So, what happens next? The two new councils will be officially established on 1st April 2027. In preparation there will be a transition period and those councillors elected will now be part of a shadow authority until 1st April 2027 (when my role will cease).

The first meeting of the East Surrey shadow authority will take place on 20th May 2026 in Reigate. At this meeting Posts will be voted in including leaders, Deputy Leaders and Executive members. This will create the new unitary council to replace all that went before, and they will become responsible for delivery of ALL services across the East Surrey area. The newly elected councillors on the shadow authority will agree budgets, council tax, staffing structures, governance arrangements, codes of conduct, members allowance schemes for councillors and thereby prepare for the transfer of responsibilities.

Meantime the “shadow authorities” will operate alongside existing country district and borough councils for the first year until they officially take over on 1st April 2027. The new councillors will have a five-year term of office, then subsequently their term will be for four years.

Residents should continue to contact myself and our newly appointed County Councillor as usual for business as usual as the new shadow councillors will only be able to respond to questions relating to the new councils in their first year of service.

On a more local note, the Warlingham division for both Unitary and County returned the following Councillors:

Warlingham Division of the Unitary Authority Ryan Bloomfield, Reform UK and Jeremy Pursehouse, Independent. Turnout: 49.3%; the overall turnout was 46.6%.

Surrey County Council by-election - Warlingham Division Jacquie Thomson, Reform UK Visit www.tandridge.gov.uk/results for all local count results and full count details.

I have made contact with all three of our newly elected representatives, given them the contact details for both the Parish Magazine and the Parish Council and also introduced them to Tatsfield Talk so that they will be able to keep the village updated with their roles as they develop. I have also asked for their contact details, which I hope will eventually appear in the Parish Magazine as a future point of reference for you all to have access to your representatives.

I have sent invitations to them all to come and join us in Tatsfield and of course Titsey so that you may meet them, if you wish, and that they can get to know about Tatsfield so that they can be informed for their decision making in the future. I am sure more will follow from us all as time goes on.

I don't know if you are aware that we have a new Tandridge Commander at Surrey Police **4862 Inspector Rob Staplehurst** who I have already made contact with and now that the elections have passed I will invite him up to the village for discussions with the Parish Council, so if you have matters to raise please let the clerk or myself know so that we can raise them.

So just to reiterate, I am now serving my final eleven months as your District Councillor and I would like to thank everyone for their kind words not only on Tatsfield Talk but to me personally. It has been one hell of a trip, but it is not over just yet.

So back to business as usual; as always my Independent group Councillors and I will continue to work with the Council(s) on Planning issues*, we appear to have a lot of them arising at the moment, enforcement issues, although fortunately only a few in the village, housing issues, abuse of yellow lines, reporting potholes and blocked drains and litter picking and road sweeping.

I will prioritise with the new County Councillor to get the area in the village centre re-laid as it is now an eyesore an embarrassment and follow up other matters and secure grants where and when possible.

* I appreciate that the "consultation" for 84 houses on Ship Hill must have come as a surprise and a shock, but I am afraid that is what is hitting the district all over due to Grey Belt Rules and our lack of a housing supply whilst the local plan is being undertaken. It is

my intention to speak with the applicant and pass many of our worries over to them in an attempt to try and improve matters should the application be permitted.

If you think I can help you with anything to do with the Tandridge District Council or anything else please do not hesitate to contact me.

Cllr Martin Allen Tel: 01959 577201

Email: cllr.martin.allen@tandridge.gov.uk or martin_allen@talk21.com

CLAIRE COUTINHO MP

At the time of writing, the results for this year's local elections have just been announced. This year was slightly different than usual as voters across Surrey voted to elect shadow councillors to the East Surrey Council, the authority replacing Surrey County Council and Tandridge District Council in April 2027.

Thank you to the brilliant efforts of the polling clerks and the dedicated folk at the count who made sure everything worked smoothly. While the results mean I'll be working alongside a few new faces in the area, I look forward to introducing myself to the new councillors and working together to help the people of East Surrey.

One of my highlights of this month was joining the fabulous ladies at the Oxted Country Market for 50th anniversary bonanza. Proud of its roots as a Women's Institute Country Market back in 1975, the Oxted Market has evolved into a local must-visit if you're on the hunt for handcrafted local wares or simply a welcoming environment. The Oxted Country Market is open every Friday 10-12 at the Woodhouse Centre, RH8 9HT.

Down the road in Hurst Green, I met up with the phenomenal Community Centre Trustees to hear an update on their expansion plans. It's starting to come together nicely. The beautiful community garden will almost double, and the footprint of the building will expand to make it more multifunctional. I'm pleased my letter of support went some way towards securing funding for the project.

Just as the pride a community centre can bring to an area, so too can the knowledge that friends and neighbours volunteer time to perform acts for the benefit of the whole community. This is the spirit I saw when I joined the Godstone Litter Angels for one of their recent litter-picking patrols.

This sense of duty to one's area is what Roger Scruton called the "small-scale wisdom of the human heart" – people who came together to preserve, protect, and clean up their local environment, motivated by public spirit. I cannot understand people who litter – our neighbourhoods are our home. We need to do a better job of teaching people to have pride in their area.

FOLLOW UP TO ELECTIONS 7TH MAY



Dear Tatsfield residents,

My name is Jacqueline Thomson, and I am delighted to introduce myself as your new County Councillor for Warlingham. Surrey has been home for most of my life — I was born in Redhill and have lived in Reigate, Redhill, Godstone and now Warlingham. I am retired after a career with the South East Coast Ambulance Service, and before that with Life Care in Caterham-on-the-Hill, supporting people with learning disabilities. I am also a mother of three and a proud grandmother of three.

I have always taken a keen interest in the politics of our great country. When the opportunity arose to stand in the County Council by-election, I took it — and I am honoured to have won your trust.

This appointment lasts for one year, as both the County Council and District Council will be replaced next year by a new Unitary Council. In that time, I intend to work hard for all residents. My priorities are to control Council spending, deliver real value for residents' hard-pressed wallets, and challenge unnecessary or vanity projects. I will always be honest: with only two Reform UK councillors on a Conservative-controlled council, I cannot promise sweeping change — but I *can* promise commitment, scrutiny, and a strong voice on your behalf.

I will be attending as many Parish Council meetings as possible, when they do not clash with County Council duties, so I can fully understand your local issues and represent you effectively.

Kind Regards, Jacqueline Thomson

A Message of Thanks from Ryan Bloomfield, your new East Surrey Unitary Authority Councillor for Warlingham Division



I am genuinely honoured to have been elected to represent Tatsfield & Titsey, Woldingham, Warlingham, and Chelsham & Farleigh, and I wish to begin by saying a heartfelt thank you to everyone across the division who came out to vote and placed their trust in me. It means a great deal.

I would also like to acknowledge the fantastic Natalie Butcher, who stood alongside me during this campaign. Natalie is a Tatsfield resident through and through, a formidable campaigner and her passion for this village — its roads, its character, and its future — was evident throughout the election. She didn't take a seat on this occasion, but I know that her unwavering commitment to Tatsfield and its residents won't stop here, and I look forward to working with her in the months and years ahead.

The issues you raised on the doorstep and when we ran our street stall on the Village Green were clear: potholes and road conditions that have been ignored for too long,

planning and development that must serve residents rather than override them, and a demand for genuine value for the hard-earned money you contribute to the public purse. These aren't abstract priorities for us as Reform Councillors — they constitute precisely the reasons we stood.

I do hope to be able to visit Tatsfield again soon and attend my first Parish Council meeting and I look forward to getting to know the residents of this wonderful village throughout my term of office.

I am here to listen, to act, and to be accessible. If you have a concern, please don't hesitate to reach out to me. This is your community, and I intend to represent it properly.

Thank you, Cllr. Ryan Bloomfield

TANDRIDGE BUSINESS AWARDS 2026 NOW OPEN FOR ENTRIES

The Tandridge Business Awards 2026 are now open for entry, celebrating the achievements, innovation and dedication of local businesses across the district. Open to businesses of all sizes and sectors, the awards recognise excellence across ten categories, ranging from customer service and sustainability to high street and hospitality. Entry is free and businesses with a trading address in the district can enter up to three categories.

Being shortlisted or winning an award can bring a range of benefits, including increased visibility through media and social media coverage, enhanced reputation through professional recognition and the chance to promote business success online, in print and at business premises. Participation can also boost staff morale, attract new talent, demonstrate credibility to customers and create new business opportunities and partnerships.

Entries close at 11.59pm on Wednesday 17th June, with winners announced at an awards ceremony at Lingfield Park Resort on Wednesday 14th October. For more information on the categories, how to apply and training sessions to help businesses with the online application form, visit www.tandridge.gov.uk/awards.

Award categories

- Micro Business of the Year - sponsored by Champ Consultants
- Business of the Year - sponsored by East Surrey College
- Employer of the Year - sponsored by The Gold Family of Ann Summers
- Rising Star - sponsored by Sebnini
- Apprentice of the Year - sponsored by Southern Building Control Partnership
- Customer Service - sponsored by Surrey Chambers of Commerce
- Sustainability - sponsored by Mettle & Bond Care Ltd
- Community Service Provider - sponsored by Lingfield Park Resort
- High Street Business - sponsored by Love Oxted
- Hospitality - sponsored by Federation of Small Businesses

For more information contact communications@tandridge.gov.uk or 01883 732962.

1st TATSFIELD SCOUTS – COULD YOU HELP?

Our Scouts have recently enjoyed circus training and “backwoods cooking” at the hut as well as further afield activities including cave exploring and woodland adventures at Downe Activity Centre.



Our activities are run by brilliant volunteers but as our fabulous Scout Leader, Matt, will be stepping down at the end of this year we need more of you to join us now to carry Scouting forward in Tatsfield.

Here’s why Ethan volunteers: “Being an Assistant Leader at 1st Tatsfield Scouts brings me a huge amount of joy and fulfilment. I still remember my own experiences as a Scout, going on camps, learning new skills and building lifelong memories and it’s incredibly rewarding to now help create those same experiences for the next generation. Watching young people grow in confidence, creativity, and teamwork is what makes Scouts such a great and enjoyable community to be part of.”

If you are passionate about empowering Tatsfield’s young people and are looking for a new adventure we’d love to hear from you: tatsfieldscouting@gmail.com

A little time, a lot of impact.

Each week Tatsfield's Scouts get active, build confidence, friendships and skills for life. It's fun, rewarding and makes a real difference.

We need volunteers to make it happen.

Can you help?

tatsfieldscouting@gmail.com



MUGA OPENING

A big thank you to all who turned up to the opening day of our new improved MUGA.

Special thanks to Biggin Hill FC for organising the 5-a-side games and Gill Firkins for her assistance with the Netball try out. All sports were popular, and the new Pickleball courts were very well used (even though no one knew the rules!)



Going forward we are looking for people to volunteer to run clubs/groups through the Summer. If you are interested, please contact me.

Kim Jennings Email: Kimjennings@tatsfieldpc.org.uk Tel: 07951072326.



LEAD BETTER. THINK CLEARER. ACT WITH CONFIDENCE

A free, high impact leadership development session designed specifically for business owners, managers and senior leaders who want practical tools they can use immediately held by Tandridge District Council.

- **When:** Wednesday 17 June, 6pm-8pm.
- **Where:** Tandridge District Council, Oxted RH8 0BT.
- **Who should attend:** Business owners, managers and senior leaders.
- **Cost:** Free (booking required). **Book on:** [eventbrite.com](https://www.eventbrite.com)

LITTLE ACORNS PRESCHOOL



During the Summer term, Little Acorns have had some fantastic, memorable and exciting visitors! This gave the children a great, real-life experience and opportunity to really get hands on with different types of animals.



Firstly, we had two ponies come to visit us. The children were fantastic at listening to instructions on how to be safe around them, helped with grooming, looked inside their horse box and listened to how their owner cares for them. It really was a special experience for the children and a great learning opportunity, developing confidence, curiosity and understanding of the world around them. Learning to care for animals also helps children to learn to be gentle, respectful and have an awareness of the needs of living things.



For our second animal visit, Tatsfield Aquatics brought in an array of reptiles for the children to see and touch. The children were really excited to hold the Royal Python, Chameleons, Stick Insects and Tortoises.

The entire animal encounter was great fun! All children were

engaged, fascinated and so excited to experience all the different animals.

A big thank you to all of the animal visitors - Little Acorns loved it!

If you are looking for a nurturing childcare setting for the Summer Term or September, we'd love for you to come and see us. Please contact office@littleacornstatsfield.co.uk to arrange a visit. **The Little Acorns Team**

TATSFIELD PRIMARY SCHOOL ART EXHIBITION

We were thrilled to be taking part in the Tatsfield Art Exhibition again this year. This year's school theme for children's work was 'Tatsfield'. Children took inspiration from a variety of artists and focussed on a range of skills in each year group.

Reception Class (Wrens) took inspiration from Eric Carle with a focus on British woodland animals. They looked at how the animals were illustrated in his books and the techniques he might have used. First, they took wax rubbings in the outdoor area and then we used these to collage an outline of our chosen woodland animal. Finally, they added detail using wool, felt, buttons and other media to create the final pieces.

Year 1 (Robins) used pointillism techniques inspired by George Seurat to recreate 'A Sunday Afternoon on the Island of La Grande Jatte' in our community of Tatsfield. They started by going across to the Tatsfield pond to take some pictures to help give inspiration for their own pieces. They then sketched our pictures using the photos that were taken, followed by painting them using the pointillism technique.

Year 2 (Kingfishers) explored the theme of landscapes, focusing on key artistic concepts such as the horizon line, foreground, and background. Using images of our local village, Tatsfield, as inspiration, the children created their own watercolour landscapes. They developed their painting skills by carefully layering watercolours, beginning with the background and then adding the foreground, to build detail in their work. Through this process, the children gained an understanding of perspective and composition while celebrating the beauty of their local environment.

Year 3 (Woodpeckers) used an impressionist-inspired style to work with long and short brush strokes; this creates the feeling of movement. They looked at how the light changes over the school field during the day. A series of short strokes in darker watercolours were applied first, with a light colourwash overlaid after to soften the scene. Then, shadow was added, and additional detail using chalk pastels to draw the eye to a set focal point and show the natural lighting which created an impression of mood.

Year 4 (Kestrels) explored the buildings in their local area through print-making. After observing and sketching familiar village buildings, the children developed their designs using two different techniques: relief printing and screen printing. In relief printing, pupils carved their designs into a polystyrene tile, carefully considering shape, line, and texture to represent architectural details. They then applied ink and pressed their plates to create bold, striking prints. For screen printing, the children used stencils to build up layers of colour, experimenting with composition and contrast to bring their images to life.

Year 5 (Owls) used the work of Nixiwaka Yawanwa, an Amazonian artist, as inspiration for their work *Hidden Creatures of Tatsfield*. After their initial sketches based on observations in nature and photos, the children decided on a final animal to recreate in acrylic paint. Once they had painted their chosen animal, the children painted plants and flowers on acetate to camouflage their creatures.

Year 6 (Eagles) explored the works of Christopher Corr, an illustrator and author whose works are often featured within children's literature. The children considered his use of colour and line as a stimulus for our own depictions of Tatsfield 'landmarks'. For their final pieces we used poster paints in blocks of colour before adding details with acrylic paint markers.

We were very grateful to Jane O’Keefe and members of the Tatsfield Art Group who supported this project and kindly donated funds for resources and prizes for the pupils.



THE OXTED & LIMPSFIELD MUSIC SOCIETY

CONCERT: SATURDAY 11TH JULY



The Society is excited to be presenting a performance of the Schubert song cycle *Die Schone Mullerin* together with Schubert's six *Moments Musicaux* by the marvellous HELEN CHARLSTON (mezzo-soprano) and SHOLTO KYNOCH (piano) at The Bawtree Hall, Wolfs Hill, Oxted RH8 OQU on Saturday 11 July 2026 at 19.30

"Charlston a strikingly original talent", (the Guardian)

"Kynoch...beautifully sensitive, flexible and transparent throughout.." (the Gramophone Magazine)

Tickets are £30 (with free entry for those under 25). Either on the door or by way of our website at www.olms.org.uk

MONKEY PUZZLE DAY NURSERY



Artist of the month!
As a nursery we have all been focusing on Wassily Kandinsky, who creates art with shapes and moving to the sound of music. Together the children created a 'Kandinsky tree' and also

floor art using tape and chalks.

Babies room created a lovely pack for the children to take home for Mental Health week! This included some top tips, resources, recommendations of useful books and lots of information on why Mental Health in children is so important.



We all took a trip to Westmore Green and released our tadpoles into their new home at the pond. This was a big moment for the children, they each said their goodbyes and watched them swim off into their new environment.

It's that time again where we invite all of our amazing dads in to join us for breakfast! It's always such a lovely time to celebrate them and spend time altogether!



Forest School Holiday Club We have spaces available for 5–8 year-olds to join in the summer holidays: 27th and 29th July, and 4th, 6th, 10th, 12th, 18th, 20th, 24th, 26th August! For any more information please feel free to contact us.

Are you looking for childcare? We offer a high standard of care to children aged 3 months to 5 years old. Providing a range of fun and exciting activities, both indoors and outdoors all year around, exploring our local environment and all it offers on local trips, celebrating all traditions and cultures. **We have spaces available here at Monkey Puzzle Tatsfield**, if you are interested and want to book a tour of the nursery, please contact us.

Phone: 01959 928427 Email: manager@monkeypuzzletatsfield.co.uk

TATSFIELD HISTORY PROJECT

Would you be interested in taking part in the **Tatsfield History Project**? We're a small, informal group and you may have some fresh ideas on what we should be doing. If so, please get in touch. **Ian Mitchell**

Email: tatsfield.history@talk21.com Tel: 577376

Website: <https://e-voice.org.uk/tatsfieldhistoryproject/>

Tatsfield Singers Present

Songs from
**STAGE &
SCREEN**

Tatsfield Village Hall

Saturday 4th July at 7pm

(Doors open 6:30pm)

LIVE BAND!

Tickets £10

*from Sheree's Store
or On the Door*

NOT SO YOUNG CLUB

At least our last meeting was held on a warm day - we have not had many of those so far this year! It was so nice to have doors and windows open and as the sun shone everyone had lifted spirits. We enjoyed home-made quiches with salad, a wonderfully made raspberry cheesecake followed by Pam's scrummy cakes. Our entertainment was 'Guess the Sweetie' and who first made them. The bonus was every table had twelve cups of different sweets that they could taste- just to make sure their guesses were correct!

In April our Bingo night in Ye Old Ship was a huge success and we would like to thank everyone who came to support us. We raised a huge £614 which will go towards our day trip to Worthing and other events. Tina and her team kept everybody fed and watered, Claire ensured everyone had our compulsory raffle tickets and Neil held everyone's attention calling those lucky numbers. Our next night will be 22nd October so put the date in your diary as tables go fast!

We are hosting another cinema night in the WI hall on Tuesday 16th June for members and guests. Doors open 6pm film starts 6.30.

On 10th May, Sue Warren arranged complimentary tickets for Wisley Gardens through the Horticultural Society - so we arranged our transport and set off on what was a dull and chilly day. After finding a suitable base in the cafeteria and a hot drink, members enjoyed the beautiful array of flowers and shrubs. Thank you, Sue, this is always such a lovely day for members escape the village and enjoy the scenery.

A big thank you again to everyone who supports our club we could not organise as much as we do without your support. Our meetings are always the second Tuesday of the month please contact me if you would like to join us.

Keep safe.

Sue Dowse, notsoyoung100@gmail.com, 07816110929

OXTED & LIMPSFIELD CHORAL SOCIETY SUMMER CONCERT

Saturday 6th June 2026, 5pm.

United Reformed Church, Bluehouse Lane, Oxted.

Tickets available @ www.olcs.org.uk



TATSFIELD WI

Tatsfield WI meets on the first Tuesday of each month.



Our members enjoyed an afternoon cream tea as part of our Annual Meeting. We reviewed our successful 2025/26 year and looked forward to the planned events for 2026/27. There will be seven talks on subjects as varied as “What is the point of wasps?” to “An audience with Charles Dickens” via remembering the comedy classic “On the buses”.

In addition four events will involve copious amounts of food. ***All for less than a fiver a month, a bargain!***

Next month on Tuesday 2nd June from 2.15 until 4pm we will hear about “Potholes, Pigs, and Paradise” – your guess is as good as mine!

Don’t forget, everyone is invited to come along for a cup of coffee or tea and a friendly chat every Wednesday morning between **10.30 and 12** in the WI Hall in Paynesfield Road. A great way to meet and catch up with other village residents – anyone of any age is welcome. So, if you are passing, please do just “Pop In”.

I would also like to remind you that our WI Hall is a conveniently local, warm, bright venue available to hire at very reasonable rates for a meeting, family party or celebration, please just give us a call on 01959 577684 to find out more.

Susan Smale 01959 577660

TATSFIELD 100 CLUB

Congratulations to the winners of the Tatsfield PFA 100 Club for **April 2026**:

1 st Prize	Margaret Burton	£42.00
2 nd Prize	Chris Heasman	£28.00
3 rd Prize	David Parker	£14.00

Thank you for supporting sport the Tatsfield Cricket Club. If you know of anyone who wishes to join the 100 Club (for a modest £6 per month), or if you would like additional numbers, then please contact me at leames200@gmail.com.

Les Eames

ST MARY'S MATTERS

ANNUAL MAY ASCENSION DAY SERVICE Over thirty early risers from a variety of local churches joined us at 6am to worship and share breakfast in fellowship and friendship. Thanks to all whose time and effort made it possible especially Revd Debra Elsdon for a very spiritual service, our Sacristan Mike, our pianist Dave and to Madie, Marjory and Jennifer for a super breakfast. Donations made went to support the work of Christian Aid. This a wonderful event so please do consider joining us next year, you will be made very welcome.

SUNDAY SERVICES Our main Sunday service with hymns is at 10am followed by refreshments in the Millennium Hall. All are welcome. On Trinity Sunday 31st May we welcomed Revd Tim Brunt from St Andrew's Limpsfield Chart who has quickly become a valued member of the Limpsfield and Tatsfield Team Ministry (LTTM).

HOLY COMMUNION FOR THE SICK AND HOUSEBOUND Please contact Revd Debra at curate.lttm@gmail.com



PERSONAL PRAYER REQUESTS We would love to support you in prayer. Please add your request to the Prayer Request Book near the Baptism Font, or email stmoffice.lttm@btinternet.com.

LIFE EVENTS For enquiries regarding baptisms, weddings, funerals, burials and the interment of ashes please contact stmoffice.lttm@btinternet.com

FOLLOW US Our website is at www.lttm.org.uk/stmarys where you'll find more information about St Mary's and has a link to our weekly Notice Sheet. You can also follow us on Facebook at <https://www.facebook.com/people/St-Marys-Tatsfield/61584833041098/>



VISIT US Our ancient pretty church is open 9am – 4.30pm on Tuesdays, Wednesdays, Thursdays, Saturdays and Sundays for viewing, prayer or reflection. You can also enjoy splendid views over the Downs from the Churchyard. Built around 1075 our church has a long, proud Pilgrim history and we continue to welcome those travelling the Pilgrim's Way today.

DONATIONS TO WESTERHAM FOODBANK We support our local community in need through this Foodbank and delivered produce on May 23rd. Our next visits will be 18th June and 30th July. Any non-perishable food can be left in the Narthex at St Mary's opening times above. To check what items are most urgently needed or to make a monetary donation please visit <https://www.visitwesterham.org.uk/westerhams-foodbank>. Thanks for continued support. **Hilary Vale 01959 577864**

ST MARY'S SUNDAY TEAS Our ever-popular Tea season is underway on Sundays from 3pm to 5pm in the Millennium Hall and continues until the end of September. Visitors old and new are all very welcome to join us and enjoy delicious cake with tea or coffee.

CHURCHYARD TEAM Our most recent maintenance session took place on 2nd May with work mainly concentrated on tidying flower beds, pruning shrubs and strimming. The old cremation area was also tidied as were the graves between there and the Millennium Hall. Considerable mowing was undertaken together with additional work on the wildflower bed. More work has been carried out in the compost area and presently there are still bags of compost freely available for collection. The Team meets again on Saturday 6th June at 10 am. **David Gulley**

NEW PAROCHIAL CHURCH COUNCIL (PCC) MEMBERS Welcome to Connie Budgen and Alexa Carter who were elected at our Annual Meeting to serve as members of our PCC. Our best wishes to them and all our committee members who work so hard each year for the benefit of St Mary's Church and the wider Parish community.

'THANKS' FROM CHARTWELL CANCER TRUST Our Churchwardens recently received a wonderful letter of thanks from one of our nominated charities Chartwell Cancer Trust. They wrote 'On behalf of everyone, I would like to thank you for your generous donation of £1,000. It is thanks to donors like you that we can continue this work, improving treatment, supporting families, making a tangible difference to cancer patients of any age'.

OXTED BEREAVEMENT SUPPORT GROUP Bereaved people are welcome on their own or with a friend to chat, share experiences and discuss ways of coping. Trained volunteers are on hand for emotional and bereavement support. 1pm-3pm Thursdays 4th & 18th June at Oxted United Reform Church 21 Bluehouse Lane, RH8 0AA.

WIDER TEAM MINISTRY NEWS

12-4pm Sunday 14th June Limsfield Chart Fair at the Cricket Club Ground. Live music from local bands, Children's entertainer, Dog show and Prize Draw.

12-4pm Saturday 20th June Limsfield Village Fete on the Glebe Meadow.



HIRE OF THE MILLENNIUM HALL Looking for a well-equipped venue for your event? Our Millennium Hall is available for bookings. **Sheila Cook (01959 577443)**

ST MARY'S CONTACTS

Our contacts are detailed near the front of this magazine and on our website www.lttm.org.uk/stmarys

TATSFIELD ONLINE

Village website: www.tatsfield.org.uk

Village facebook page: search for 'Tatsfield Village' on facebook

Tatsfield Talk facebook group: search for 'Tatsfield Talk' on facebook, and ask to join to be able to view and post. **Twitter:** @tatsfieldtweet

REGULAR TATSFIELD EVENTS AND INFORMATION

Sun	9.30 am	Yoga with Lexy, VH
	10.00 am	Church service – StM
Mon	9.30 am	Tots on Top – CH
	9.30 am	Shape and Tone with Gary - WIH
	1.30 pm	Bridge Club – WIH
	7.00 pm	Art Group – VH [Term time]
	8.15 pm	Bingo – TVC
Tue	1.00 pm	Not So Young Club (2 nd Tuesday of the month) WIH
	2.00pm	Cosy Crafters, Sheree’s Store and Tea Rooms
	2.30 pm	WI Meeting (1 st Tuesday of the month) WIH
	4.00pm	Paracise VH
	7.00 pm	Scouts and Explorers – SH
	6.15 pm	Barré with Fi - VH
Wed	9.00am	Mat Pilates with Emily, WIH
	10.30 am	WI Pop In – WIH
	2-4 pm	Composting Site OPEN
	6.00 pm	Shape and Tone with Gary – WIH
	6.00pm	Over 8s Jujitsu, SH
	6.30pm	Latin Fusion Dance Fitness for Adults, TPS
	7.30pm	Adults Jujitsu, SH
	7.30 pm	Yoga – VH
Thu	9.30 am	Yoga with Lexy, StM
	9.30 am	Shape and Tone with Gary, WIH
	2.00 pm	Scrabble at AMB (2 nd Thursday of the month)
	6.00 pm	Over 8s Judo – SH
	6.15pm	Barré with Fi, VH
	7.30 pm	Adults (14+) Judo - SH
	7.30 pm	Tatsfield Singers - TPS
	7.30pm	Mat Pilates with Emily, WIH
	8.00 pm	Table Tennis – VH
Fri	9.30 am	Combat Fitness - SH
	10.00am	Mat Pilates with Emily, WIH
	1.30 pm	Short Mat Bowls –VH
	4.15- 6.15pm	Boom Arts Academy – VH Various classes – contact for details
	8.00 pm	Badminton Club - VH
Sat	9.00 am	Under 8s Judo – SH
	10.00am	Composting Site OPEN 10am-12pm
	10.15 am	Over 8s Judo - SH

Venues: AMB - Aileen McHugo Building • CGA - Community Games Area • MH - Millennium Hall • SH - Scout Hut • StM - St. Mary’s Church • TACG – Tatsfield Allotments & Community Garden • TVC - Tatsfield Village Club • TPS - Tatsfield Primary School • VH - Village Hall • WIH - Women’s Institute

UPCOMING EVENTS – VILLAGE AND BEYOND

JUNE

4 th Thu	7.45pm	The Man Who Left The Titanic, Barn Theatre, Oxted
4 th Thu	1.00pm	Oxted Bereavement Support Group, URC, Oxted
5 th Fri	7.45pm	The Konks are Koming, Barn Theatre, Oxted
6th Sat	10.00am	Churchyard Tidy Up, StM
6 th Sat	5.00pm	OLCS Summer Concert, URC, Bluehouse Lane, Oxted
7th Sun	3.00pm	Summer Sunday Teas, StM
8th Mon	8.00pm	Parish Council Meeting, AMB
12 th Fri	7.45pm	ELO Encounter, Barn Theatre, Oxted
13 th Sat	7.45pm	Oxted Comedy Night, Barn Theatre, Oxted
14 th Sun	12.00pm	Limpsfield Chart Summer Fair
14th Sun	1.30pm	Tatsfield Open Gardens
14th Sun	3.00pm	Summer Sunday Teas, StM
16th Tue	6.00pm	Not So Young, Cinema Night, Members & Guests, WIH
17 th Wed	6.00pm	Tandridge Leadership Session, Tandridge District Council
18 th Thu	1.00pm	Oxted Bereavement Support Group, URC, Oxted
19 th – 20 th	various	Mystery at Magie Manor, Glow Jrs, Barn Theatre, Oxted
20 th Sat	12.00pm	Limpsfield Village Fete
21st Sun	3.00pm	Summer Sunday Teas, StM
24 th Wed	7.30pm	Joseph Duveen Art Dealer, Arts Society, Limpsfield Church Hall
25 th – 27 th	various	Little Shop of Horrors, Glow, Barn Theatre, Oxted
28th Sun	3.00pm	Summer Sunday Teas, StM

JULY

4 th Sat	7.00pm	Songs from Stage and Screen, Tatsfield Singers, VH
Every Sun	3.00pm	Summer Sunday Teas, StM
11 th Sat	7.30pm	Oxted & Limpsfield Music Society Concert, Hazelwood School

AUGUST

Every Sun	3.00pm	Summer Sunday Teas, StM
-----------	--------	-------------------------

PARISH MAGAZINE EVENTS LISTINGS

If you would like your event included in this diary in future, please send details to tatsfieldpm@gmail.com. Please also let us know if any information has changed.

THE ARTS SOCIETY LIMPSFIELD

Joseph Duveen: Charismatic crook or the world's greatest art dealer? by Mark Meridith. **Wednesday 24 June 2026. Evening lecture only starts at 7.30pm, Limpsfield Church Hall RH8 0DG;** come early to enjoy refreshments. Guests £10. "Europe has a great deal of art, and America has a great deal of money," remarked Joseph Duveen. It was a simple enough observation, but there was only one man who was perfectly positioned to combine his quintessential English charm with an unparalleled gift for creative salesmanship, allowing him to convince the tight-fisted titans of Wall Street (Frick, Morgan, Mellon etc.) that there was indeed one thing more important than money - art - and, "when you pay high for the priceless, you're getting it cheap". Without Duveen, there is no Frick; and, without Duveen both the Metropolitan Museum in New York and The National Gallery of Art in DC would struggle, or even fail, to be considered world-class today. But was he just a charismatic crook milking millionaires, or was he indeed truly deserving of the title, 'world's greatest art dealer'?



**PHOTO OF THE
MONTH COURTESY
OF RICHARD GIBBS**

TATSFIELD IN BLOOM



The Spring has not been kind to TIB, especially when our plug plant order arrived in the middle of March when it was ordered for the end of April! However, thank goodness for the polytunnel where we have been able to grow them on and look after them. This involved taking them outside during the hot afternoons and then bringing them in for the cold nights! We did lose a



few plants but on the whole they have survived the changes in temperature and are now ready to be planted in the displays.

However, our next problem has been to decide when to do this! We usually plant our summer displays at the beginning of June but our plug plants really need to be planted as soon as possible – but not until

we can be sure that the frosty nights are over. Again, the polytunnel is coming to our rescue as we will be planting up some mangers and keeping them inside to ensure they thrive.

Meanwhile, we have been looking after “Marian’s Bed” at the front of the Village Hall, watering the new lavender plants and weeding. We will be planting the Campanula plants we purchased a while ago as soon as the new sign for the Village Hall is erected in the bed.

The Spring Violas and Bellis daisies in some of the displays have survived the Spring quite well but will be replaced with Calibrachoa, Verbena and Sanvitalia very shortly.

Thank you to all those who have signed up for the watering rota this summer. This starts at the beginning of June and continues until September – or whenever the summer ends.

It was lovely to see some new volunteers joining us over the past few weeks. If you are interested in helping, please contact me by phone or email – my details are below.

A big thank you to all the litter pickers who go out during the week to keep our lovely village rubbish free. Please continue to do the good work.

Jill Hancock (577622/07711 417387) (jillhancock12@gmail.com)



TATSFIELD GARDENING CLUB - HOME OF TATSFIELD HORTICULTURAL SOCIETY: *OPEN GARDENS SUNDAY 14TH JUNE 2026*

On Sunday 14 June 2026, residents of Tatsfield will once again open their gates, garden paths and secret corners for a delightful summer afternoon of colour, creativity and community spirit.

From 1.30pm to 5pm, visitors are invited to explore a wonderful collection of private gardens as part of the Tatsfield Open Gardens event — a perfect opportunity to enjoy the beauty of the village in full bloom while gathering inspiration for your own outdoor space.

Whether you are an enthusiastic gardener, a casual admirer of beautiful landscapes, or simply looking for a relaxing Sunday afternoon, Open Gardens offers something for everyone. Each participating garden has its own personality: from traditional English cottage gardens to wildlife-friendly havens, productive vegetable plots and tranquil hidden retreats.

The afternoon is about far more than flowers. Open Gardens is a cherished community occasion where neighbours and visitors can come together, strolling between gardens, guests can soak up the peaceful atmosphere of Tatsfield while meeting the passionate gardeners behind the displays.

Visitors can also look forward to refreshments, including teas and cakes throughout the afternoon.

Maps will be available online to download from our updated website, www.tatsfieldhorticulturalsociety.weebly.com from 30th May. Hard copies will also be available from 8th June at Sheree's, The Ship, and Tatsfield Post Office.

Gardens are free to enter, although some gardens may be collecting donations for charity.

With June bringing some of the year's most vibrant planting, the event promises dazzling borders, fragrant blooms and plenty of seasonal inspiration. It is an ideal afternoon for anyone seeking a leisurely afternoon in beautiful surroundings.

So, mark your calendar for Sunday 14 June 2026 and come and discover the hidden beauty behind the gates of Tatsfield. Bring comfortable shoes, a camera, and perhaps a notebook for all the gardening ideas you are sure to take home.

If you would be interested in taking part in our Open Gardens event either this year or next year, please get in touch with Carol on 07815 775859 or Helen on 07800 897127.

Tatsfield Open Gardens

Sunday 14 June 2026

1.30pm – 5pm

An afternoon of gardens, refreshments and community spirit in the heart of Tatsfield.

THE TATSFIELD GARDENER IN JUNE

What an interesting start to the growing season. Our Tatsfield gardeners are really challenged! It's warm and sunny, then we have frosts very early and sunny warm afternoons, and then that NE wind starts and keep on going. If your early vegetables or summer plants have been blackened by those dawn frosts don't despair, carefully remove the black bits and they should recover. I fear that fruit trees in frost pockets may have damaged blossom, especially apples and pears, a check for fruitlets will confirm if your trees have suffered. The back end of May is looking dry and warm, and I bet it could be hot and dry this month too but, we are warned, watch out for those big rain storms, maybe with hail.

Let's talk about watering the garden. The winter rains have done a good job replenishing our underground chalk aquifers where a lot of our water is drawn; reservoirs are also in good shape – BUT – the big increase in housing plus industrial use without an increase in water storage means that it will not take a long period of dry weather to put our supplies at risk, yes that means restrictions on watering the garden. So, how about we do our bit by taking a fresh look at how we use our water outside. Do you really need to wash the car every weekend? Did you know that walking around the garden with a sprinkler in your hand just wets the surface and actually does the plants no good at all; this technique leaves a damp surface but dry underneath; the plant roots will grow up towards the moisture – this is called hydrotropism and does more harm than good. Watering the soil around the plant, giving a good soak works well and does not need repeating unless there is a period of hot dry weather. Store any rainwater as much as you can, buy water butts for each downpipe, use a washing up bowl in the sink and store that water - I know it is a pain but the alternative is much more inconvenient!

If you have yet to buy some summer flowers have a think about Begonias, they flower all summer long with minimum management, and they do not need a lot of watering once established. The small compact *Begonia semperflorens* makes a lovely low bushy plant; the *Begonia illumination* and *boliviensis* types are perfect for baskets and other tall containers with continuous flowering with just a little dead heading.



Jon Allbutt

WILDLIFE GARDENING TIPS FOR JUNE

You don't need to be Chris Packham to realise the Spring and Summer is when the UK's bird population skyrockets; partly because there are masses of chicks hatching, and partly because of migratory visitors arriving. The downside of this is that there is suddenly a lot more beaks to feed, and this was a sad feature of one episode of Attenborough's latest masterpiece, *'Secret Garden'*, which includes the bleak story of a

pair of Blue Tits whose family of five chicks all die of starvation simply because there is not enough food to go around. The response from the geniuses at the RSPB is to recommend that we stop feeding garden birds until Autumn. Huh?

Problem #1 Just for a minute, think like a bird. You would naturally build your nest where there is an abundance of food, such as near a bird feeder. Then, just as your brood hatches, the food supply gets turned off because some donut at the RSPB said so. The result is inevitably dead chicks and less birds.

Problem #2 Next, imagine that you are someone who makes a living from growing or selling bird food and, all of a sudden, your customers stop buying bird food because the RSPB said so. Consequently, your business goes bust and you have to find another job. And when autumn comes around and it's time to restart bird feeding, there's more demand, less supply, and prices go through the roof. Bravo RSPB.

So, what is the RSPB hoping to achieve with this birdicidal advice? Well, they've realised that for years they've been selling bird tables that cannot easily be cleaned and hence diseases have been transmitted through unsanitary conditions albeit with good intentions. So instead of trusting us to feed birds sensibly and hygienically, they've gone into a flap (pardon the pun) and got a bit irrational.

But, thinking smarter, there's a better way. The disease can spread at flat bird feeders that are difficult to clean (eg wooden bird tables). And it is known that larger birds are passing it on to smaller birds (think pigeons and finches). So, my top tips for keeping garden birds fed and healthy are:

1. If you use a flat feeder, line it with a removable tray that can be easily cleaned and never use it if there's poo on it. I line my feeder with a trimmed floor tile, that can be cleaned/sterilized with boiling water from the kettle.
2. Use a separate feeder for small birds. Mine has a 2" wire mesh around it that the pigeons and magpies, etc can't squeeze through.
3. Feeders that are physically small and have no perch will not be visited by larger birds that may carry the disease.
4. If you have somewhere big enough, put food on the ground and change location a little every day to prevent detritus building up. Make sure there's no cat-cover nearby though.

Basically, it's about simple hygienic precautions that the RSPB don't trust us to follow. But you don't have to take my word for it and you might like to check out the tips and advice section of The Really Wild Bird Food Company, all written by a specialist vet at www.reallywildbirdfood.co.uk/. And let's hope the folk at the RSPB give their heads a good wobble and think again.

Interesting fact of the month...Our garden is resembling a scene from Beatrix Potter at this time of year with all the fledgelings, squirrels, and the return of the badgers. As a bonus, we've also got a visiting vixen with a cute little lone cub. Which brings me neatly on to the subject of foxes and their extraordinary superpower. It is well known that these

little animals are extremely intelligent and agile, but it is less well known that much of their agility is gained from the fact that they are the only canine with retractable claws similar to a cat. This gives a huge climbing advantage and allows them to move more silently when hunting. Retracting your claws when not needed also keeps them sharp for hunting. But that's not their real superpower.... Drumroll please; foxes are the only animal known to hunt using the Earth's magnetic field. They use this unique feature as a range finder when hunting in snow and dense undergrowth. Their amazing hearing allows them to precisely detect the direction of prey under as much as 60cm of snow or thick grass, and their magnetic range-finding tells them exactly how far away their prey is. This gives them a kind of X-Ray vision, rather like the Man of Steel, and hence they can pounce with extreme accuracy without ever seeing their prey. Consequently, their hunting success in poor conditions is around four times as productive as other similar predators.

Jim Kenney

THS ANNUAL WISLEY VISIT

50 people arrived at the RHS Wisley Gardens on Sunday 10th May – a record number of THS members. It is an event we arrange every year as we are allowed two visits for up to 55 people with free entry with our affiliation to the RHS. If you had to pay it would have cost over £20 per person, so you can see what a massive benefit it is.

Wisley is the flagship garden of the RHS and one of the most visited and loved gardens attracting over a million visitors a year. Since the roadworks have been finished it has become a well-loved attraction.



George Fergusson Wilson, a keen grower of fruit and orchids, bought the garden in 1878. After Wilson's death, Sir Thomas Hanbury purchased the garden along with a neighbouring farm and donated it to the RHS.

I always turn left and walk up the steps to the famous Old Laboratory Building which, which is the familiar symbolic core of the Wisley landscape. The views of the pond are beautiful. Up a few steps and you are greeted with the laburnum arch – a mix of purples and filled with buzzing bumble bees and the scent is a joy to behold.

You are then greeted to the long borders, showcasing many herbaceous plants, and this year the alliums were looking their best, and then it was on to see the massive trees and shrubs on Battleston Hill. The rhododendrons and azaleas were looking beautiful and the Pocket Handkerchief Tree was shredding its leaves like confetti – a stunning sight to see.

We walked across to Hilltop. The latest addition and the Home of Gardening Science opened in 2021, protecting the future of plants, people and the planet at the iconic RHS Wisley. There is a café and Sky Terrace with rooftop views over the grounds.

We walked down the hill to the massive 12-metre-high Glasshouse, built to celebrate the RHS Bicentenary. It covers an area equal to ten tennis courts. The glasshouse was constructed using recycled glass from the previous glasshouse. There was a new area for Orchids as you enter the building. The Tropical plants are enormous and unbelievable that you could be stood in such a jungle setting. We read that robins and wagtails are able to operate the automatic opening vents and make their nests in there - clever birds. There is also a Dry Arid garden section which is full of cactus and succulents.

The Rock Gardens and Alpine Houses are always worth a look, and wandering around the gardens, admiring the massive trees, many unusual and rare, makes for such an enjoyable relaxing experience.

Thank you everyone for supporting the Society. **Sue Warren**

FAIRTRADE TEA TENT SALE

It was a joy to raise the Fairtrade Gazebo once again in the village to join with the Tatsfield Horticultural Society in having a sale of their goods and ours. Community events like this always feel positive and a source of encouragement. It was lovely to chat to people whilst sharing free teas and coffees.

As you can see from the photos we had a colourful range of Fairtrade goods, giving people a chance to look at and buy items which we don't see in many high street shops.

The total value of sales supplied to us by our local Fairtrade representative Moyna Bridge was over £230 showing how people seem to appreciate the opportunity to buy Fairtrade goods.



We are so fortunate to have a wonderfully supportive relationship with Sheree's Stores. Sheree carries Fairtrade goods on a regular basis within the shop on her Fairtrade shelves. In addition, she has also generously offered to sell some of the goods that were not snapped up at the Tea Tent. So do take time to peruse the Fairtrade shelves in Sheree's shop where you will find coffee, oils, rice, biscuits and some of the beautiful, lacquered coconut bowls shown in the photo. In addition, as we have mentioned before Fairtrade goods can be bought in all our local supermarkets, Oxfam in Oxted and online.

Tatsfield Village Fairtrade Committee

tatsfieldfairtradevillage.weebly.com

[Facebook.com/tatsfieldfairtrade](https://www.facebook.com/tatsfieldfairtrade)

tatsfieldfairtradegroup@gmail.com

THE NIGHT SKY IN TATSFIELD – JUNE 2026

It isn't very often that we get to see the two planets closest to the Sun, together in the evening sky but that is the case this month. The gas giant Jupiter, is there as well as a very slim crescent Moon.

Venus is reasonably well positioned although, altitude wise, it is a little past its best. Mercury is visible for short periods and is always close to the Sun, being its nearest planetary neighbour. Jupiter, on the other hand, has been visible in the evenings since October last year when we saw it rising in the north east at midnight.

The planetary show takes place between the west and north west (NW) just after sunset so you will need a good horizon in that direction. I will reference the positions of the planets to when the Sun is 6° below the horizon which corresponds to the end of civil twilight and the beginning of nautical twilight.

If we begin on 1st June, at around 9:45pm when all three planets will be visible, Jupiter



has the greatest altitude (19°) and is a little to the NW (right) of west. Venus is slightly further NW and lower in the sky at 16° whilst Mercury is further NW still at 7½° high. If you can't see Mercury, draw a line through Jupiter to Venus and continue it

onwards for twice the distance between them. The line will pass 2° or 3° above Mercury.

As the nights pass you will see that Jupiter and Venus are getting closer together and will, on the 9th, pass within 1½° of each other. By the 15th, Venus and Jupiter have swapped places with the former now being furthest west followed by Jupiter and Mercury as we move downwards and to the NW (right). The three lie, very roughly, in a line which, extended to the horizon (almost exactly NW), might bring you to an extremely slim crescent Moon. Around 10pm would be a good time to look on either of those nights. Two days later, on the 17th, the 10% crescent Moon is less than 1° below Venus. The map shows the situation at 10pm on the evening of the 15th. A few bright stars in the area are named in italics to avoid confusion.

After that The Moon moves further east (left) and Mercury and Jupiter dip towards the horizon although Venus will maintain its current altitude for longer and remain visible into August although with a much-reduced altitude in the west.

Please remember that due to the proximity of some of these planets to the Sun, you should not search for them with optical aid until after you are sure that the Sun has set. Should you accidentally look at the Sun, your eyesight could be permanently damaged.

Brian Mills FRAS

NORTH DOWNS SINFONIA

North Downs Sinfonia held their Spring Concert on Saturday 9th May in Tatsfield Village Hall featuring a selection of 'Early Classical' works, described by Jonathan Maynard during the introductory speech as a return to the 'roots' of NDS, as it was such works that were performed in the initial NDS concerts.

The concert started with an 'Overture' by J C Bach, which was in fact a short Sinfonia in three movements. The opening Allegro was a very bright and airy affair, with the orchestra settling into the mood of the music very quickly and showing their confidence and enjoyment of the work. The slower Andante followed with some lovely lyrical interplay passages between the Oboes and Flutes, ably suited by the rest of the wind section. The quick Presto rounded off this work, with the orchestra committed to the tempo set by Liz Worth and delivering an exciting conclusion to this little known, but very enjoyable work.



Liz then gave an extremely interesting short talk about the overall selection of works for the evening and the links between them, which was well received by the audience. The next work that followed was Richard Strauss's Horn Concerto No.1, which of course was not an 'early classical' work in terms of its date of composition, but was composed in that style by the young Richard Strauss to please his father. The soloist for the evening was the young Tom Pinnell – the opening showed the wonderful clarity of tone that he possesses which shone through in the lyrical opening of the work. The work is played without breaks between the

movements, so is a continuous 'showcase' of the abilities of the horn and the player with big contrasts between the fast passages of the opening and final movements, and the slow beauty of the middle movement. The ending was a real display of Tom's virtuosity with a flurry of notes to the finish, bringing rapturous applause from the audience to end the first half.

The second half was introduced by Liz Worth as an all-Mozart affair, starting with La Clemenza di Tito Overture and ending with his Paris Symphony, No.31. Mozart is notoriously difficult to perform well, given the delicacy and precision with which everything has to be played, but the orchestra rose to the occasion admirably and captured the real character of both works. With the glorious summer evening outside that was enjoyed in the interval by orchestra and audience alike, this music really felt fitting to that setting and rounded the evening off in an uplifting way; congratulations to all on a fantastic evening!

North Downs Sinfonia will celebrate their 20th anniversary in November this year with a concert on Saturday November 14th at 7:30pm conducted by Jonathan Maynard. There

will be a special programme including two of their most popular soloists returning, as well as a piece specially commissioned for the evening, composed by one of their soloists from their 2025 Young Soloist concert, Daniel Pengelley – so this date is not to be missed! The full programme for the evening will be as follows: **Daniel Pengelley** – *North Downs Overture (Premiere)*; **Haru Ushigusa** – *The Lark Ascending, Ralph Vaughan Williams*; **Mariela Cingo** – *Scherzo from Concerto Symphonique No.4 – Henry Litolff*; **Emilie Mayer** – *Symphony No.1*

Peter Maynard



Free microchip included

£10 dog vet check-up

- Tuesday 9 June - Blackberry Vets, Lingfield RH7 6NQ
- Wednesday 10 June - Medivet, Oxted RH8 ORA

Book now

Contact **RSPCA Surrey East Branch**

E-mail: contact_us@rspca-surreyeast.org.uk

Call: **07380 814519**

Appointments on a first come, first served basis

Book by: 12pm, Monday 1 June 2026

Terms and conditions:

- Appointments are 15 minutes, from **9am to 5pm**.
- This is for **Tandridge District residents** receiving benefits or the state pension*.
- Check-ups are not for emergencies.
- Any additional treatment is the pet owner's choice and responsibility.

*Evidence required



NIGEL'S NATURE NOTES

Most of our reports arrive from a loyal group of local retirees, so it's particularly encouraging to be able to publish a set of notes from one of our resident pre-teens. While the rest of us are having a leisurely lie-in, Toby (Kilgour) and his dad, Andrew, are packing a bag, donning outdoor gear, grabbing binoculars and heading off into the great outdoors. As previously promised, here are –

Toby's Nature Notes – Home and Away (09.04.26)

*The past week or so has been scattered with days of beautiful sunshine followed by days of wind and lashing rain. However, that hasn't limited the amount of birds we can see out and about. I went [with Dad, Andrew] down to Poole Harbour to see what I could see. First of all, we arrived at RSPB Arne around 11:00 on Monday 6th April. Straight from the off we saw two adult **White-Tailed Eagles** soaring in unison over the car park. This was likely to be female G466 and her partner, the first of their kind to successfully raise a chick in the South of England for 240 years!*

*Carrying on with our walk, we began to see some more active wildlife including a lone female **Sika Deer** and a **Curlew** along with many more waders and shore birds such as the **Bar-Tailed Godwit**, **Oystercatcher** and a pair of **Shelduck**. Just as we thought the day couldn't get any better, we came upon an unringed female **Osprey** resting on an artificial nest platform on the bank of the Wareham Channel after its long migration from Africa. We also got some stunning views of a beautiful pair of **Dartford Warblers** perched on the top of a Gorse bush as well as a male **Siskin** that took position atop a Silver Birch.*

*Waking up on Tuesday 7th we started the day with a Spring Safari Cruise around the harbour with the charity, Birds of Poole Harbour. Our first spot was a male Osprey (possibly resident male 022) making his way to good hunting grounds over Arne Bay. Later on in the trip, we had sightings of an **Avocet** (resting in Brownsea Lagoon), five **Spoonbills**, two **Wheatears** and two **Little Ringed Plovers**. Further toward the end of our Safari, we spotted a pair of White-Tailed Eagles – most likely the Dorset pair – covering ground extremely quickly, possibly patrolling the limits of their territory. In reaction to this, much closer than the previous pair, a juvenile White-Tailed Eagle appeared above the treeline being mobbed by a **Buzzard** and **Carriion Crow**. The birds of prey were all out and showing with three **Peregrine Falcons** and a **Marsh Harrier** gliding low over Arne Moors.*

*Now for the 'Home' section of this article. I have recently been to Sevenoaks Wildlife Centre to find out how the birds there are getting on. For those of you who haven't visited for a while, the Visitor Centre has recently reopened after being fully refurbished. Our first spot of the day was a pair of **Great-Crested Grebes** with one out fishing and one sat on a nest visible through a maze of willow branches. We also spotted many cock **Wrens** singing and fighting to protect their territory. We heard **Goldcrests** and a **Willow Warbler** singing overhead along with many **Chiffchaffs** lightening the spring mood. The classic male **Blackcap** showed well with many singing from high up branches; if you're lucky, you can hear these elusive birds singing around the village at the moment.*

The **Grey Herons** were out in numbers with a couple of nests balancing precariously on the needle thin branches at the very tops of the trees. However, by far our best two spots were a **Garden Warbler** singing its heart out on an ivy-covered tree, and flashes of shimmering blue as a **Kingfisher** gave me the run around while I was trying to



get a picture with the long-lens which, sadly, I never managed. I did, however, manage to get a shot of the nesting Grebe.’

Well, Toby, what can I say apart from, ‘Bravo!’ **What a great report.** I’m sure our readers would like to join me in expressing gratitude for finding the time to write these ‘Home and Away’ notes. It’s not easy when you have schoolwork to complete and cricket practices to attend! Your dad mentioned in

his introductory email message that you are a Young Nature Warden at Elmley. Should you decide to write again I’m sure our readers would love to hear about the activities you participate in as a warden. In the meantime, keep up the good work and... **Happy Adventuring!**

Readers may also recall that in the May issue I promised you a challenge. Here is the email message that arrived from John (Rosenbaum) dated 14.04.26: *‘This fungus/lichen came down in the wind from, I think, a Sycamore tree in the garden. I was hoping that a knowledgeable person in the village may know what it is? I have tried to find a likeness to no avail. Can you help?’*



‘This fungus/lichen came down in the wind from, I think, a Sycamore tree in the garden. I was hoping that a knowledgeable person in the village may know what it is? I have tried to find a likeness to no avail. Can you help?’

So, there’s your challenge. Are there any readers who are knowledgeable in this field of interest? I feel sure there must be. **We look forward to hearing from you.**

**Any news or views? Contact: nigelshaw2000@hotmail.com
Alternatively, drop a note in to ‘Primrose Ridge’, Greenway.**

June 1926 began with news in the Westerham Herald of the inquest into a fatal car accident on the Croydon Road close to Tatsfield Court Farm. A car was being driven up from Westerham and was apparently on the wrong side of the road in the right-hand bend towards the Rectory Lane junction. When the driver swerved to avoid a vehicle coming from Tatsfield, he lost control of his car, which overturned twice and left him fatally injured in the road.

TATSFIELD
SCHOOL WEATHER STATION.—The Tatsfield School Weather Station record for May is as follows:—Height of station, 741.3 feet above sea level; total rainfall for month, 1.64 inches; total rainfall to date, 13.60 inches. Heaviest rainfall for month, .48 inches, on 14th; highest maximum temperature, 76 degrees F., on 26th; lowest minimum temperature, F. 37 degrees, on 5th, 8th and 15th. Highest barometer reading, 29.70 inches, on 25th; lowest barometer reading, 29.10 inches on 30th.

100 years ago, Tatsfield's school was a contributor to the Surrey Mirror. Its monthly weather reports were a regular feature in the local news section. Next to it was a detailed account of the wedding of the youngest daughter of the Robinson family, who lived at the White House and owned Park Farm – now Tatsfield's golf course.

The month also brought good news for Augustus Hitchcock, who had built the Village Hall in 1909. He had now won the tender to build twelve council houses in Lusted Hall Lane at a total cost of £6,480.

But there was also some not-so-good news - a fire at one of the lane's existing council houses. The Westerham Herald's report said an explosion and fire had resulted from a lighted candle coming into contact with fuel from a nearly-new motorcycle standing in the hallway of the house. Much of the hallway and its contents had been badly damaged.

There was also news of the Choral Society, which had been re-formed in 1910. At the beginning of the month they performed what was described as a musical tour of the world with singers dressed in national costumes of various countries, including the United States, Japan, China, Turkey, Italy, Spain and France, concluding with a return to the 'Motherland' at the end of the evening.

Tatsfield found its way into the London Evening News with a 'Two nests in One' report in the middle of the month. Mrs Miller at the Manor House in Ricketts Hill Road had discovered a chaffinch nest in the fork of a tree. It had apparently been disturbed at some stage, but instead of abandoning it, the bird had simply built a new nest on top of the first.

Ian Mitchell, Tatsfield History Project

Email: tatsfield.history@talk21.com Tel: 577376

Website: <https://e-voice.org.uk/tatsfieldhistoryproject/>



TATSFIELD ART EXHIBITION

Having attended the Tatsfield Art Exhibition for several years, I was pleased to be invited by the TAG group to write a review of the 2026 exhibition and to attend the preview. Seeing the works immediately after installation offered valuable insight into the breadth and quality of the display. This year's exhibition presented an impressive range of styles and approaches, showcasing artists from the youngest exhibitors through to long-standing members, and reflecting considerable imagination and commitment throughout.

On entering the hall, the first display was by **Brian Ling**, whose selection spanned several subjects and styles. Stand-out pieces included the colourful "Balloons Galore", "Keith Richards" and "Hair Day". Proceeds from sales were donated to the excellent charity Hospice in the Weald.

Simon Cook presented a contrasting approach, with finely worked, intricate compositions. Notable works included a vibrant centrepiece depicting a blossom tree over a lake, alongside an expertly rendered galleon, its rigging and masts set against a sunset that evokes the sensation of being on deck. A further selection drew on oriental themes and motifs.

Lingfield Art Group contributed an engaging selection, ranging from "Country Singer" to the colourful "Cool Cat" and the monochrome "Meow" sketch. Although stylistically distinct, the works were consistently strong.

Christine Stainers exhibited works including "Blood Moon", the coastal scene "Low Tide", and "Forgotten Garden". "Splash of Colour" was particularly eye-catching.

Maggie Garstang displayed a series of expressive portraits, with faces rendered with notable character. Particularly memorable was the group of six figures at a bus stop—one reminiscent of Peter Sellers—as well as "Gathering", which depicts a band with dancing couples enjoying themselves in the foreground.



On the stage area, the bright palette of **Carol Gaskell** was immediately striking. Works included the inviting countryside scene "A Long and Winding Road", the dramatic skies of "Out of the Darkness", and the light-hearted "Bottoms Up", featuring two geese receding into the distance.

The **Tatsfield School** display was a welcome inclusion, featuring an array of colourful pictures and drawings—from 4’s scenes and views of Tatsfield—alongside Reception work “Lola’s Rabbit”, and a selection of Year 5 wildlife studies.



Cally Faircloth showcased several accomplished pieces, including “Coastal Path”, “Into the Tearoom”, and the



playful “Fancy a Lift”. The level of observation and finish is impressive, with details—such as the cow and the car’s wing mirror—rendered with near-photographic precision

Kris Spendlove contributed a varied selection, including “Rainy Night NYC” and the



glitter-accented “Trumpet Player”, both of which a pleasure to view.

Sheila Alexander combined painted and textured surfaces with fine needlepoint, creating richly worked mixed-media pieces. The two “Bluebell Wood” works were especially accomplished, as was “Secret Garden”. The evident time, patience and technical skill invested in these pieces is commendable.



Steve Gaskell exhibited large-scale studies of insects, wasps and butterflies, notable for their precision and close attention to detail. Several works were executed using simple materials such

as biro and wax crayon yet achieved an impressive level of finish.

Linda Lambert presented mixed-media works (“art-efacts & DIY”), including “Leopard in the Tree”, “Citrus”, and “Whispers of Winter Glow”. The selection demonstrated versatility across subject matter and technique.

The Millennium Group offered a varied programme of styles and subjects. John Morris’s “Grapes” and “The Empty Shed” were notable for their careful detail, while Alexander Biggs’s “Sunset Over the Port” provided a strong, atmospheric counterpoint.



Jane O’Keefe presented a charming collection of felted work and acrylic on canvas paintings. Pieces included “Colobus Monkey”, the orange hare, “Seal Alert”, “Booby Blue”, and a particularly striking felted snake—an impressive demonstration

of skill and imagination.

Jackie Copeman appeared to have shifted focus away from botanical studies this year, instead presenting a series of scenes inspired by the village, alongside a pleasing view of Venice.

Near the refreshments area—offering wine, homemade sausage rolls and quiche—**Hannah Franklin’s** work provided a lively burst of colour and variety. The mixed media “Pastéis de Nata” introduced a playful note, while the collage “Scarlet Memories” was particularly striking. “A Pint with E.M.V.”, featuring a woman appearing to be biting the



head off a haddock sitting with a dog on her lap, added humour, and “Gift Horse” and “The Comfy Green Chair” contributed to an overall sense of charm and innocence

Sandra Vivian showed “Abstract Sparks” and the thoughtfully constructed “Passage of Time”, alongside several interesting, felted pieces.

Gill Manners displayed several works that stood out for their atmosphere, including “Bluebell Wood”, “Stormy Clouds”, “A Mother’s Love”, and “Riverside in Winter Looms”.

Sandra Shury’s work was notable for its colour, finish and attention to detail. “Dreams” offered an inviting coastal scene, while “Chartwell” combined rich floral elements with a warm, welcoming palette. “Mr Bowie” provided an accomplished tribute to a musical legend.

Barbara Forest exhibited a selection of appealing watercolours, notably “Hayle Beach” and “Doorway”, both rendered with sensitivity and restraint.



Shirley Davis displayed several accomplished equestrian works, alongside felted pieces. A portrait of a border collie was particularly successful.

Mike Moore's "The Frenchman" was a particular highlight. A snow scene convincingly conveyed the chill of winter, while a beach sunset stood out for its strong, well-judged colour.

Tash Waterman presented a wide-ranging selection of work. "Crimson Primulas" and the understated figure walking a dog among trees were both effective, while the tulips collage and the bright, colourful house studies provided an energetic counterbalance.

Nigel Shaw exhibited a single contemporary collage, a confident piece that would not look out of place in the Tate Modern. While not to every taste, it was undeniably striking

Jackie Flaherty concluded the displays with a series of warm, characterful paintings, including an old red Morris Minor car surrounded by chickens, a Cavalier King Charles Spaniel running through a field, and a puppy looking in a mirror at its reflection. Proceeds from sales support the charity "Grow Old Disgracefully", which encourages care-home staff to help residents take part in enjoyable, unconventional activities.



Highlights: This year's exhibition combined strong craftsmanship with an assured use of colour across multiple media. Particularly noteworthy were Simon Cook's intricate compositions, Sheila Alexander's textile-infused mixed-media pieces, and Sandra Shury's richly detailed scenes. The programme was further strengthened by accomplished portraiture from Maggie Garstang, lively mixed-media work by Hannah Franklin, and the welcome contribution from Tatsfield School's young artists.

Overall, the exhibition was a strong showcase of local creativity and skill, offering visitors the opportunity to enjoy a wide range of work across media, subjects and styles.

The Children's art competition winners are: Reception Henry; Year 1 Arabella; Year 2 Maisie; Year 3 Ellie; Year 4 Alfie; Year 5 Poppy; Year 6 Cali.

Favourite painting in the exhibition was won by Cally Faircloth for 'Coastal Path'.

David Yendall

GLEN DURHAM

Your local, personal and dedicated

ESTATE AGENT

Moving home this spring?

Maximum Exposure, Optimal Results:

Enjoy exceptional service, advanced technology, and nationwide marketing and achieve the best outcome for your property sale with me, Glen and The Agency UK.

Expert Guidance and Support:

As an experienced agent, I will provide personalised assistance throughout the selling process, ensuring a smooth and successful transaction.

Stress-Free Experience:

Let me handle the complexities of selling your property, allowing you to relax and focus on what matters most to you.

glen.durham@theagencyuk.com

07784 124 888

Property Sold Properly

SALES - LETTINGS - PROPERTY MANAGEMENT



PPHS

Professional Plumbing
& Heating Services



**Your 5 Star
Plumbing and Heating Specialists**



BOILER INSTALLATION, REPAIR, REPLACEMENT, SERVICING & SAFETY CHECK

We can advise you of the best boiler to suit your needs, budget and specification as well as installing and maintaining your current boiler. PPHS would recommend an annual boiler service to keep your boiler running at full efficiency, prevent any breakdowns and save you money.

PLUMBING & PIPEWORK

Whether you need a leak repaired, a new tap installed, radiators repaired or fitted or general plumbing and pipe work, we can help.

RADIATORS & POWER FLUSHING

A thorough powerflush will improve heat distribution throughout the property, subsequently lowering household energy bills and increasing system reliability.

BATHROOMS

PPHS can do as much or as little as you need to help you realise your dream bathroom – including helping you choose the materials, sorting out the plumbing and electrics, plastering your walls, tiling and installing the furniture



SVilliant

IPHE

Trustmark

Google

Check My Energy



Scan Me



07702 082 193



peter@professionalplumbingandheating.co.uk



www.professionalplumbingandheating.co.uk

—THE—
LONDON ROAD
FURNITURE COMPANY



5000 sq ft of beautiful furniture and gifts over 3 floors

WWW.LONDONROADFURNITURE.CO.UK



THE LONDON ROAD FURNITURE COMPANY

LONDON ROAD, HALSTEAD,
SEVENOAKS, KENT, TN14 7AA

OPEN 6 DAYS A WEEK (CLOSED WEDNESDAYS)

Tel 01959 533433





RB

ROOFING AND BEYOND

- **New roofs / roof repairs**
- **Flat roofs**
- **Moss & gutter cleaning**
- **All tile repairs**
- **UPVC Fascia soffit gutters**
- **Lead work / lead welding**
- **Chimney**
- **Exterior painting**
- **Fencing**
- **Cladding**

TEL: 07853 567 541

FREE QUOTES

 **RB roofing and beyond**

 **rbroofingandbeyond**

email: rbroofingandbeyond@outlook.com

BASED IN TATSFIELD



Local Electrician

Part P Registered

*

Fully Insured

*

No job too small

*

Free Estimates

07847 395 437



DAVID WAITE PROPERTY MAINTENANCE

Private & Commercial

Mob: 07949 307906

Email: djw2261@aol.com

Hedges Cut. Tree Work

Log Cutting & Splitting

18-Ton Log Splitter

& man available

Grass Mowed. Turfing

Overgrown Gardens

Winter Tidy Ups

Patios, Sheds Erected

Fencing Repairs

Brickwork Repairs

Gutters Cleaned & Repaired

Internal Painting

Fully Insured



079 75 79 79 75

OAKLANDFENCING@GMAIL.COM

- ALL FENCING WORK UNDERTAKEN:
- TIMBER • CONCRETE • METAL • GATES • SHEDS •
 - REPAIRS • DOMESTIC & COMMERCIAL •
 - EMERGENCY ATTENDANCE • FULLY INSURED •
 - FREE ESTIMATES •

THINK FENCING... THINK OAKLAND



Mat Pilates

Mixed ability classes, everyone welcome!

WEDNESDAY

9.00- 10.00AM

TATSFIELD WI HALL

THURSDAY

7.30-8.30PM

TATSFIELD WI HALL

FRIDAY

10.00- 11.00AM

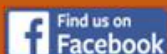
TATSFIELD WI HALL

Contact me for more information: emilydancefirst.co.uk



All types of property maintenance and refurbishment works undertaken. For an estimate please call

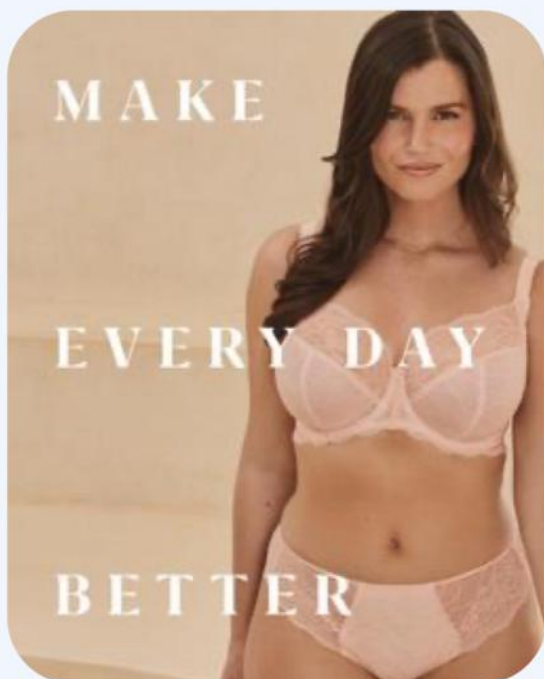
**Stuart on
07802 888774**



Entre Nous Lingerie

4 London Road, Westerham, TN16 1BD

*NEW Cesile, available in Peach or
Black - £38*



**Entre Nous is a small independent lingerie shop in
Westerham, owned by Jane and Kate, who have over
20 years of experience.**



**10 - 4 Tuesday to Saturday
www.entrenouslingerie.co.uk
01959 563975**

EXPERT ACCOUNTING & TAX ADVICE

Who we are

Devonshire Green is a team of qualified accountants with over 90 years combined experience. Serving clients nationwide from our idyllic Westerham office, our team includes tax accountants, financial advisers and wealth management experts ready to help with all your accounting needs!



Trusted by thousands



No jargon



Award winning service

What we do

- Personal tax returns – self assessment
- Limited company accounts
- Sole trader accounts
- Management accounts
- CIS for contractors & subcontractors
- Payroll
- Tax planning
- VAT returns
- Bookkeeping
- Wealth management

Let's talk

Tel: 01959 565772

Email: admin@devonshiregreen.uk

Lodges Wood Oast, Goodley Stock Road
Westerham, Kent TN16 1TW



DevonshireGreen
Accounting | Taxation | Financial Planning

www.devonshiregreen.uk



R. THORPE
— HEATING & PLUMBING LTD —

Domestic & Commercial Heating Engineers & Plumbers

- **Boiler Breakdowns, Repairs and Servicing** (All Makes and Models)
- **Boiler Installations and Replacements** (Interest Free Finance Available)
- **Heating Installations and Efficiency Upgrades**
Including Underfloor Heating, Servicing and Repairs
- **All Plumbing Work Undertaken**
- **Air-conditioning and Heat pumps**

Rob and his team cover anything from family homes up to large commercial properties. Based in Biggin Hill and covering London, Kent, Surrey and Sussex.



Call or WhatsApp: **07597 048884**
Email: rob@rthorpeheating.co.uk
Visit: rthorpeheating.co.uk



Elite Global Construction Ltd

Please do not hesitate to contact today about your dream bathroom kitchen or renovation project, your dream is our mission.

kitchen and bathroom specialists

One of our many great reviews:

"Highly recommend Elite Global Construction, we have had a bathroom renovated along with a downstairs toilet and Lobby area, just had a new kitchen fitted and it has been a great transformation..."



@eliteglobalconstructionltd

www.eliteglc.com 07837 646688

Eliteglobalconstructionltd@gmail.com



NEW LIFE CHURCH
BIGGIN HILL

A CHURCH FOR THE WHOLE COMMUNITY

A local church with an international vision

EVERY SUNDAY 10am

Join us for worship
and Bible teaching
with youth and kids
meetings

DURING THE WEEK

- **Connect** Every Monday from 2-4pm
- **Stay & Play** Term time Fridays 10:30am-12pm
- **Youth** Term time Fridays 7:30-9pm
- **Dance fit** Friday 5:30-6:30pm
- **Board games cafe** First Saturday of the month 3-7pm

SCAN ME



FIND OUT MORE

Try Church



www.newlifebh.org.uk
01959 571 667



f www.facebook.com/newlifebh

ig newlifebigginhill

wa @newlifechurchbigginhill352



DAVID RUDD & SON PLUMBING AND HEATING LTD

- Full central heating systems and boiler exchanges carried out for GAS, LPG and Oil (Kerosene)
- Installers of Worcester, Valliant and Glow Worm boilers with up to **12-year** guarantee
- Kamco Power Flushing
- All types of Plumbing, Heating and Drainage
- Landlord / Homeowners Gas Certificates
- Installation and maintenance of Ground Source Pumps, Solar,
- Under Floor Heating, Cookers and Gas Fires
- Boiler breakdown – Diagnostics and Repairs
- Installation and servicing of Unvented Hot Water Systems
- Full bathroom design and installations

Fast, Friendly, Reliable Service

WRAS Approved Institute of Plumbing
ACIPHE RP



Tel: **01959 577072**

Mob: **07831 641664**

07957 940905

davidruddandson@hotmail.com



EST. 1881

•W•UDEN & SONS•

FAMILY FUNERAL
DIRECTORS



Biggin Hill : 01959 537 130

Petts Wood : 01689 822 291

West Wickham : 020 8777 4444

Bromley : 020 8658 0000

Beckenham : 020 8462 2222



wuden.com



@UdenFunerals



ALEX JONES FUNERAL DIRECTORS

Serving the community since 1996

- OFFERING A CARING AND PERSONAL SERVICE
- BEAUTIFUL CHAPELS OF REST
- HOME VISITS AVAILABLE
- MEMORIAL MASONRY
- PRE-PAID FUNERAL PLANS FROM GOLDEN CHARTER
- AN INDEPENDENT FAMILY OWNED BUSINESS



LINGFIELD
1 East Grinstead Road
Surrey
RH7 6EP
Tel: 01342 832 534

OXTED
92 Station Road East
Surrey
RH8 0QA
Tel: 01883 730 383

FOREST ROW
1 Ashdown Court
Lewes Road, East Sussex
RH18 5EZ
Tel: 01342 822 399

EDENBRIDGE
70 High Street
Kent
TN8 5AS
Tel: 01732 860 047

GOLDEN CHARTER
FUNERAL PLANS



Alex Jones Funeral Directors Limited is an appointed representative of Golden Charter Limited trading as Golden Charter Funeral Plans which is authorised and regulated by the Financial Conduct Authority (FRN:965279).

GC-LIFT 2806 - 1023



Badger Bathrooms



SHOWROOM: Betsom's Farm, Westerham TN16 2DS
01732 464450 www.badgerbathrooms.com



Good Movers

Removals & Clearances

- Removals
- Boxes & Packing
- Storage
- Clearances
- Courier Delivery
- Cleaning
- Probate Service Arranged
- Light Demolition
- Cash Paid for Unwanted Goods

The best way, the only way, the Good way!

0800 024 6183 / 07522 795594
www.goodmovers.co.uk / info@goodmovers.co.uk

Keeping IT Simple

Solving all your technical support worries, calmly and patiently in your own home, by someone who cares

- > New Device Setup
- > Instruction & Tuition
- > Cleaning & Cooling
- > Virus & Malware Removal
- > Hardware Upgrades
- > Remote Support
- > Small Business Support
- > WiFi Routers & Networking
- > Cloud Storage
- > Data Backup
- > Data Recovery
- > E-mail Support
- > PCs & Laptops
- > Printers
- > Smartphones
- > Tablets
- > Televisions
- > Wireless Security Cameras




07375 416 176
dan@kisit.co.uk




MUSSELWHITE

BUILDING, PLUMBING & HEATING



Est. 1979 | Family Run | Professional | Reliable | Honest Workmanship

Call or WhatsApp:

07887 517361

musselwhite.builders@gmail.com

- Plumbing & Heating
- Extensions
- Landscaping & Fencing
- Bathroom & Kitchen Installations
- Roofing
- Refurbishments
- Disability Access
- Glazing
- Carpentry
- Pipework
- Underfloor heating
- Maintenance and Repairs
- Brickwork
- Rendering & Plastering
- Electrical Works

Cheekatrade
Approved member



CIPHE
Construction Industry Payments
Association



WORCESTER
Bosch Group





CREST

DEVELOPMENT GROUP LTD

Luxury Home Transformations You Can Trust

Plumbing • Bathrooms • Kitchens • Full Refurbishments

Crafted with precision. Designed for excellence.

At Crest Development Group Ltd, we specialise in high-quality home improvements that combine craftsmanship, style and reliability.

From luxury bathrooms and bespoke kitchens to full property refurbishments and professional plumbing services, our experienced team delivers results built to last.

FREE ESTIMATES AVAILABLE

☎ 0800 047 2611

crestdevelopmentgroup.co.uk

Start your next project with confidence.

Contact us today for a no-obligation quote.

Find us on Instagram & Facebook

📷 @_crest_development_group_ltd_

Checkatrade.com
where reputation matters

THE WASP GUYS Wasp Nest Removal 07761 232470

Local
Friendly
Trustworthy
Service



Fully Insured
100%
Guaranteed
7 days a week

See our Checkatrade customer
reviews at

[https://www.checkatrade.com/
trades/thewaspguys](https://www.checkatrade.com/trades/thewaspguys)

www.waspnestsdestroyed.com

Discover the joy of dance



Twirl your tutu

All dance styles. All ages.

07850 746189/ 07584 064643
www.judithessexschoolofdancing.co.uk



IDTA

**ROYAL ACADEMY OF
DANCE**
REGISTERED TEACHER





Culverhouse & Co.

CHARTERED ACCOUNTANTS
CHARTERED FINANCIAL PLANNERS

LOOKING FOR... AN ACCOUNTANT? A FINANCIAL ADVISER?

We combine experience with a proactive approach; providing strategic advice on areas including business finances, tax planning, and wealth management to deliver long-term benefits.

- ✓ Personalised solutions
- ✓ Accounting & financial planning services
- ✓ Helping you live life the way you want to live it

01689 862211

info@culverhouse-accountants.co.uk

7 High St, Farnborough Village, BR6 7BQ

Tatsfield
Aquatics

Proud members of
Checkatrade.com
Where reputation matters

Pond Maintenance And Landscaping

- Pond Maintenance
- Pond Design & Construction
- Pond Renovation
- Lake Management
- Garden Makeovers
- Fencing, Paving, Turfing

01959 571 828

ian@tatsfieldaquaticsandlandscaping.co.uk



MINI CABS

AIRPORT CARS BIGGIN HILL

YOUR LOCAL

LICENSED MINI CABS

01959 540550

Ibbett Mosely

A name you can trust.

Independent Estate Agents - Selling Homes since 1900



PROFESSIONAL SERVICES

Residential Estate Agency • Residential Lettings
Property Management • Commercial Agency
Valuations • Building Design and Layout
Building Surveying • Town Planning and Development
Auctions - Furniture, Effects, Antiques and Fine Art

28 Market Square, Westerham, Kent, TN16 1FR
01959 563265

westerham@ibbettmosely.co.uk
www.ibbettmosely.co.uk

Offices at

Westerham • Sevenoaks • Otford • Tonbridge • Borough Green • West Malling • London

Sunningvale Service Station

Sunningvale Avenue, Biggin Hill TN16 3TL

01959 573434

We offer a warm welcome and friendly service
whatever your motoring needs



Petrol/Diesel

MOT

Catalysts

Bodywork Repairs

Diesels

Spraying

Exhausts

Insurance Estimates


LING & Sons Ltd
BUILDING CONTRACTORS

BUILDING FOR OVER 50 YEARS

New Builds | Renovations | Extensions


CONTACT Information

 01959 577586

 info@lingandsons.co.uk



www.lingandsons.co.uk

MR Computing

38 years of combined experience in IT

Local, Professional and Family Owned
business since 2005

NO FIX NO FEE & NO CALL OUT CHARGE

- 
- Punctual visits at an agreed time or collection & drop off service.
 - Apple & Windows computer & tablet/phone support for Business & Home.
 - Reliable wireless range improvement for Home & Business.
 - Most work carried out in a one hour visit. Fixed price workshop repairs.
 - Repairs, speedup and maintenance, Data transfer/recovery, Computer malware/virus removal.
 - New computers supplied/set up and made to feel familiar.



&



Windows

**Call Mark
& Sue on:**

01883 730345

OR

0800 6129534

Email:

office@mrcomputing.net



Website - www.mrcomputing.net
Reviews - mrcomputing.net/reviews