

# Lab Scanners



## AutoScan-DS-EX Pro (H)

### Embrace The 5.0 MP Era

AutoScan-DS-EX Pro(H), developed and manufactured by SHINING 3D, is a 3D dental scanner with powerful functions for multiple applications covering scans of impressions, plaster models, articulators, implant abutments, etc. Its high-resolution cameras, advanced algorithms, and user-friendly interface bring you with superior data quality with optimal experience.



### Advanced Desktop Scanner



**Ultra-high Accuracy:** Scan accuracy  $\leq 8 \mu\text{m}$  assures reliable scan result, satisfying the requirement of various applications in dental industry completely. abutments, etc. Its high-resolution cameras, advanced algorithms, and user-friendly interface bring you with superior data quality with optimal experience.

**5.0 MP**

#### Unparalleled Details:

Equipped with dual 5.0 MP high resolution cameras, AutoScan-DS-EX Pro(H) can capture every detail of the components meticulously.



#### Fast Speed:

Bite scan: 7s  
Upper/Lower jaw scan: 14s  
1~4 dies scan: 18s  
5~8 dies scan: 30s  
Impression scan: 66s

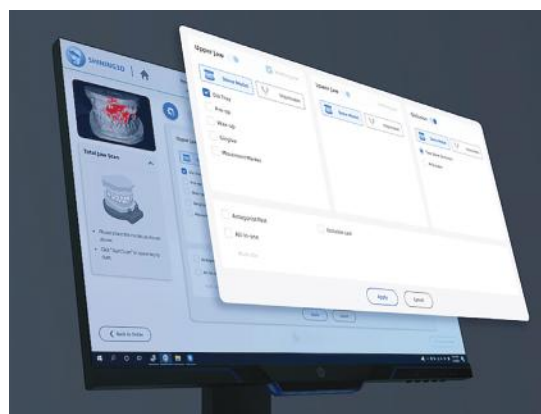
## AutoScan-DS-EX Pro (H)

### Powerful Software

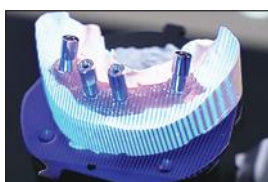
**Flexible Workflow:** Set up your own workflow as you prefer, increasing work efficiency like never before, all-in-one and triple tray are available to get complete scan data with less steps.

**Backstage Data Processing:** Scan and backstage data processing can be carried out simultaneously, making the whole process more efficient.

**Versatile Scan Modes:** The new software associated with AutoScan-DS-EX Pro(H) can support versatile scan modes, including Multi Path Scan, High Quality Scan, AI Scan, Texture Scan, HDR Mode Scan, Reduce High Brightness Scan, etc.



Implant Abutment



Implant Bridge



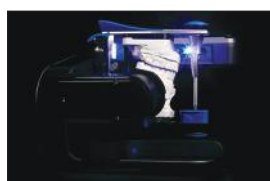
Scanbody



Texture



Model



Articulator



Full Denture



Impression



Post and Core

### AutoScan-DS-EX Pro (H) Specifications

Camera Resolution	2*5.0 MP
Accuracy	≤ 8 μm
Scan Time	Bite scan: 7s; Upper/Lower jaw scan: 14s; 1~4 dies scan: 18s; 5~8 dies scan: 30s; Impression scan: 66s
Articulator Scan	Support articulator transfer
Output Format	STL, PLY, OBJ
Light Source	Blue Light
Dimension	385*260*270 mm
Weight	5.0 Kg
Interface	USB 3.0
Power Supply	DC 24V

## AutoScan-DS-EX Pro (C)



## New Upgrades, More Distinguished

### AutoScan-DS-EX Pro (C) Specifications

<b>Camera Resolution</b>	1.3 MP
<b>Scan Time</b>	8 s for bite scan; 12 s for upper / lower jaw scan; 13 s for 1-4 dies scan; 21 s for 5-8 dies scan; 58 s for impression scan
<b>Output Format</b>	STL / OBJ / PLY
<b>Light Source</b>	Blue light
<b>Dimensions</b>	260x270x420 mm
<b>Weight</b>	5 kg
<b>Interface</b>	USB 3.0
<b>Power Supply</b>	Dc24 V



## AutoScan-DS-EX Pro (C)

### ALL-IN-ONE SCAN

This new all-in-one scan method allows scan of quadrant models and dies at the same time, which largely simplifies the scan process and improve the scan efficiency by almost 50%

#### Conventional 4 Steps



1 Bite



2. Upper



3. Lower



4. Die

#### All-in-one 2 Steps



1 Bite



2. All-in-one

### EVEN FASTER SCAN SPEED

With increased scan speed, a single jaw scan can be finished in 12 seconds. The entire process of a separate-die order can be completed within 2 minutes and a non-separated-die order within 2.5 minutes.



Bite  
8s



1-8 Dies  
13-21s



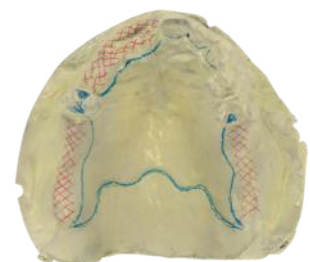
Single Jaw  
12s



Impression  
58s

### TEXTURE SCAN

Clearly captures the textures and marks on the plaster model, assisting technicians to finish the digital partial framework design.



# Stay up to speed with 3Shape Generation Red Lab Scanners

3Shape E2, E3 & E4 scanners have been upgraded to the same next generation scanning platform as E4 to deliver 20% more speed than before. Designed with a signature red ring, Generation Red E scanners provide optimized productivity.



# 20% faster

## Red Lab Scanners

### E2

Increases productivity and texture scanning



- ✦ 2 x 5 MP cameras, Blue LED Multiline
- ✦ Accuracy (ISO 12836 / implant): 10 µm/12 µm
- ✦ Scan speed (arch): 24 sec
- ✦ Scan speed (full arch impression): 72 sec
- ✦ Texture: B&W
- ✦ Scanning Strategy: Standard

### E3

High performance and implant bar accuracy



- ✦ 2 x 5 MP cameras, Blue LED Multiline
- ✦ Accuracy (ISO 12836/study model): 7 µm/10 µm
- ✦ Scan speed (arch): 18 sec
- ✦ Scan speed (full arch impression): 64 sec
- ✦ Texture: Color
- ✦ Scanning Strategy: Standard

### E4

Ultra-high speed and accuracy



- ✦ 4 x 5 MP cameras
- ✦ Accuracy (ISO 12836): 4 µm
- ✦ Scan speed (full arch): 9 sec
- ✦ Scan speed (full arch impression): 45 sec
- ✦ Texture: Color
- ✦ Scanning Strategy: Die-in-model

### F8

Fast forward to design



- ✦ 4 x 5 MP cameras
- ✦ Accuracy (ISO 12836): 4 µm
- ✦ Scan speed (full arch): 9 sec
- ✦ Scan speed (full arch impression): 45 sec
- ✦ Texture: Color
- ✦ Scanning Strategy: All-in-one / die in model

## Additional Accessories (Optional)



Multi Die Fixture



Two Cast Fixture



Impression Fixture



Wax Fixture



Occlusal Setup Tool

## Lab Scanner - Configurations

	Scanner	E2	E3	E4	F8
<b>Scanner features</b>	Camera	2x5MP	2x5MP	4x5MP	4x5MP
	Accuracy	10 µm	7 µm	4 µm	4 µm
	Scan Speed (Full Arch)	24 sec	18 sec	9 sec	9 sec
	Scan Speed (Full Arch Impression)	72 sec	64 sec	45 sec	45 sec
	Texture	B/W	Color	Color	Color
	Scanning strategy	Standard	Standard	Die in model	All-in-one / Die in Model
	Dual model scanning	X	X	X	✓
	Scanner connection	USB	USB	USB	Ethernet
	Auto-start	✓	✓	✓	✓
	Tilt-free scanning	X	X	X	✓
	Support additional indication tools	Yes	Yes*	Yes*	Yes + F8 Tools
	Server client set-up	✓	✓	✓	✓
<b>Software and apps</b>	ScanIt Dental scanner software	✓	✓	✓	✓
	Dental System (with option for cheaper scale-up)	Add-on	Add-on	Add-on	Add-on
	Studio Apps	Add-on	Add-on	Add-on	Add-on
	3Shape LMS (Essentials free / Premium paid)	✓	✓	✓	✓
<b>Service &amp; support</b>	Warranty with LabCare	5 Years	5 years	5 Years	5 years
	Express replacement	X	X	X	ü

\*No support for F8 specific tools

## Choose Your Design Software

### Complete Restorative

**CR**

Get all indications from Premium & Removable Packages plus all available restorative add-ons to design abutments, implant bars, models and more at an attractive price.

### Crown & Bridge

**C&B**

Design full anatomies, bridges, copings, frameworks and wax-ups. Use CAD points to provide advanced indications.

### Scan Only

**C&B**

The easy way to go digital! Receive TRIOS cases or Scan gypsum models and send to an external design service.

### Premium

**P**

Design all indications from the Crown & Bridge package plus splints, digital temps, digital smile design, RealView, telescopes, post & core and more.

### Removable

**R**

For labs that specialize in providing full and partial dentures.

### Optional Add-Ons and CAD Points

**Add**

Supplement your solution with add-on modules to offer abutments, implant bars and bridges, models, dentures and more or purchase CAD Points to use on case-by-case basis



## Dental System - Software Configurations

CAD Indications	Dental System™ Complete Restorative	Dental System™ Premium	Dental System™ Crown & Bridge	Dental System™ Removable
Copings & bridge frameworks	✓	✓	✓	✓
Anatomical copings & bridge framework	✓	✓	✓	Upgrade
Full anatomical crowns & bridges	✓	✓	✓	✓
Gingiva on all indications	✓	✓	CAD Points / Upgrade	Upgrade
Single wax up / Wax up bridge	✓	✓	✓	Upgrade
Inlay / Onlay / Inlay bridge / Veneers	✓	✓	✓	Upgrade
Multi-layer crowns & bridges	✓	✓	CAD Points / Upgrade	Upgrade
Digital temporaries	✓	✓	CAD Points / Upgrade	Upgrade
Virtual diagnostic wax-ups	✓	✓	CAD Points / Upgrade	Upgrade
Post & core	✓	✓	CAD Points / Upgrade	Upgrade
Telescopes	✓	✓	CAD Points / Upgrade	Upgrade
Customized abutments & screw-retained crowns	✓	Add-on / CAD Points	Add-on / CAD Points	Add-on / CAD Points
Implant bars and bridges	✓	Add-on / CAD Points	Add-on / CAD Points	Add-on / CAD Points
Full dentures	✓	Add-on / CAD Points	Add-on / CAD Points	✓
Removable partial dentures	✓	Add-on / CAD Points	Add-on / CAD Points	✓
Customized impression trays	✓	✓	CAD Points / Upgrade	✓
Model Builder™	✓	Add-on / CAD Points	Add-on / CAD Points	Upgrade
Positioning Guides	✓	✓	CAD Points / Upgrade	Upgrade
Splints, night guards and protectors	✓	✓	CAD Points / Upgrade	Upgrade
Ortho system	Add-on	Add-on	Add-on	Add-on
Implant planning & surgical guides	Add-on	Add-on	Add-on	Add-on
<b>Advanced Tools</b>				
Smile composer™ including sculpt toolkit	✓	✓	✓	✓
Mirroring teeth	✓	✓	✓	✓
Simultaneous modeling on upper & lower	✓	✓	✓	✓
Dynamic virtual articulation	✓	✓	✓	✓
Attachments	✓	✓	✓	✓
Realview™ engine with 2D design guidelines	✓	✓	Upgrade	✓
Align and re-use design	✓	✓	✓	✓
CAD block placement	✓	✓	✓	✓
3Shape communicate™ (2GB storage included)	✓	✓	✓	✓
TRIOS® inbox & shade measurement	✓	✓	✓	✓
Basic / Expert mode	✓	✓	✓	✓
Advanced design validation tools	✓	✓	✓	✓
Manufacturing Inbox™	50 Connections	50 Connections	50 Connections	50 Connections
Full manufacturing equipment compatibility	✓	✓	✓	✓
3Shape LABcare™ included in subscription	✓	✓	✓	✓

✓	Included in the specific Dental System™ Software version
Add-on / CAD Points	You can either use CAD points for each case or purchase of add-on module (sold separately)
Upgrade	Requires upgrade to Dental System™ Premium edition / Complete Restorative (Sold Separately)
CAD Points / Upgrade	You can either use CAD points for each case or upgrade to Dental System™ Premium edition (sold separately)
Not Available	Not available for this scanner model / software version



WHERE **TRUST** COMES **FIRST**



**Warranty Ke Saath Bhi  
Warranty Ke Baad Bhi**

### For Sales Queries

 85277 00805

 [cadcamcrm@unicorndenmart.com](mailto:cadcamcrm@unicorndenmart.com)

### Customer Care

 011-45551250, 95994 48518

 [care@unicorndenmart.com](mailto:care@unicorndenmart.com) | [care1@unicorndenmart.com](mailto:care1@unicorndenmart.com)



SCAN TO VISIT OUR WEBSITE



Corporate Office: 3 Local Shopping Centre, MOR Land, Near J Block DDA Market,  
New Rajender Nagar, New Delhi – 110060

    /unicorndenmart.com

\* Accessories shown may not be a part of standard equipment. Specifications are subject to change without notice.

Ver 04/2025