

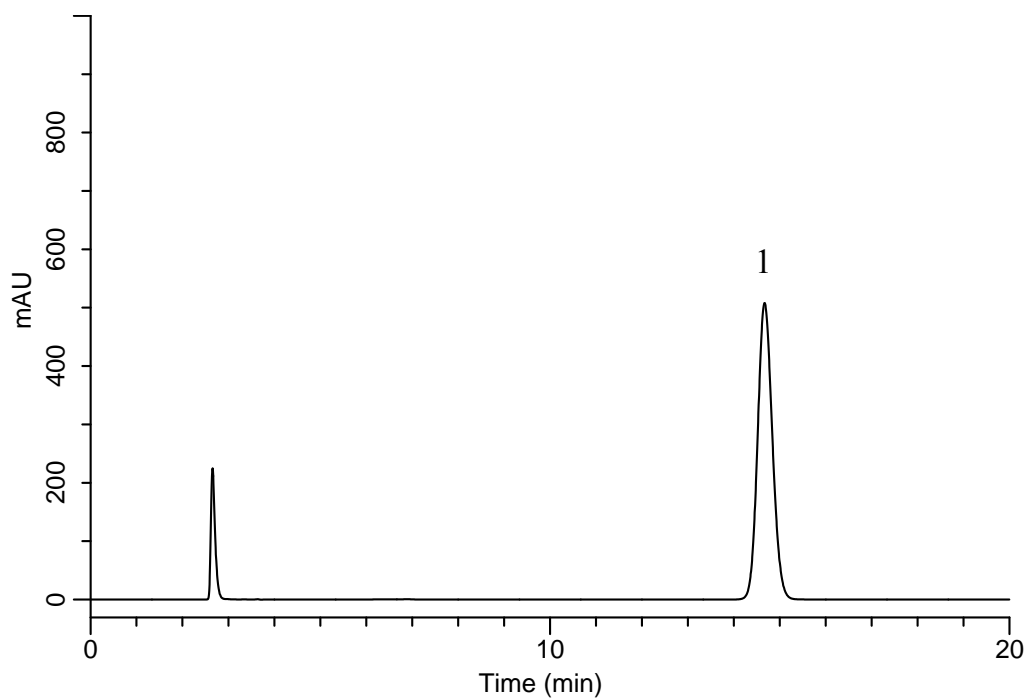
InertSearch™ for LC

Inertsil® Applications

Analysis of Quetiapine Fumarate

(Under the Condition of the Japanese Pharmacopoeia)

Data No. LB059-0894



Conditions

System : GL-7400 HPLC system
Column : Inertsil C8-4
(5 μ m, 250 \times 4.6 mm I.D.)
Column Cat. No. : 5020-04086
Eluent : A) CH₃CN
B) CH₃OH
C) 20 mM (NH₄)₂HPO₄ (pH 6.5, H₃PO₄)
A/B/C = 7/54/39, v/v/v
Flow Rate : 0.95 mL/min
Col. Temp. : 25 °C
Detection : UV 230 nm (GL-7452 PDA Detector)
Injection Vol. : 50 μ L

Analyte:

1. Quetiapine fumarate 80 mg/L

Theoretical plates : 10,026 (\geq 6,000)
Tailing factor : 1.11 (\leq 2.0)
RSD of the
peak area (n=6) : 0.51 (\leq 1.0)