

ISSUE 5 • MARCH 2024

4-H UPDATES



Official Newsletter of Barber County 4-H

Regional Club Days, March 23, 2024

Club Days will be on March 23, 2024, at Medicine Lodge High School. The schedule will start around 9:00 A.M., but the building will be open by 8:00 A.M. for those needing a chance for one last practice. The schedule will be emailed next week to those who are participating.

County Fair Theme, Prizes Survey, and More

4-H Council selected a theme at the February Meeting. The Fair theme is "County Fair Era." An entry form for the Fair Book Cover Contest is included at the end of the newsletter.

The Fair Board would like to know what kind of prizes members would like for the building exhibits. A 1 question survey is available at https://kstate.qualtrics.com/jfe/form/SV_5dRuP3heqmnojj0. Please answer the question by April 1.

The Fair Board also discussed the Food Bake Sale that happens right after the 4-H Foods are judged. This generates very little revenue. For 2024, we are going to allow members to take their items back, donate them to the fair kitchen or the superintendents can keep the items for display. No items will be allowed to be picked up until 4-H Foods Judging is completed.

More plans are being made each month so keep watching the newsletter for more details.

This issue:

[Regional Club Days](#)
PAGE 1

[Fair Changes, Repeat](#)
PAGE 2

[Summer Camp](#)
PAGE 3

[Looking Ahead](#)
PAGE 4

[Go-Getter, FCS Judging](#)
PAGE 5

[Record Book Round Up](#)
PAGE 6

[State Events](#)
PAGE 7

[Calendar](#)
PAGE 9



Barber County Tagging Information

May 3 - Breeding Beef,
All Sheep and Goats, All
Swine for the Market or
Breeding Shows

June 15 - Swine for the
Prospect Class (must be
State EID tagged)

Tags will be purchased
from the Extension
Office.

State EID Tags - \$3
Barber County Tags - \$2

All Animal information
will be uploaded through
4-H Online.

Directions are available
through a [How to Guide](#)
at:
<https://howflow.io/workflow/LF6l0AxKeiCjOuZtkMXSW>

Fair Changes, Repeat from January And February

The 2024 Fair will be July 25-28. The Fair Board and the Extension Council have had great discussions on some changes. One of the biggest changes is following a change at the state level.

Starting this year, animals sold during a premium sale may be shown again including at Kansas Junior Livestock Show and Kansas State Fair. The Barber County Fair Board has edited its Premium Rules to be in line with this.

Starting with 2024, 4-H members will be required to attend half of their club meetings between October 1 and the County Fair to be eligible to sell in the Premium Sale. This includes animals and food.

First, the rule about swine age will now be: Market Swine must be born after December 1 of the previous year. Previously it was January 1 of the current year.

The second change is adding a prospect class to the Swine Show. The class is for swine tagged for KJLS or KSF. The animals in this class must have a State tag (EID). We will continue to accept tagging information on these animals until June 15 to correlate with KJLS and KSF nomination deadline. Entries in this class will not be eligible for Grand Champion Market Swine and will not count towards the breed maximum of 2.

2024 Tagging Policy: For the 2024 Barber County Fair, all market and breeding animals will be identified by a State EID Tag, a Barber County Tag, Scrapie Tag or a Tattoo. This number will be submitted with 3 photos (Front, Side, & Side) by the deadlines announced in the 4-H Newsletter. Tags will be available for purchase in the Barber County Extension Office.



4-H Summer Camps

Summer brings 4-H Camp Season. We have several opportunities for members to be involved.

Discovery Days is June 5-7 on the K-State Campus for members 13 years old or older. This is a mini college experience. Classes are held on a variety of topics related to many 4-H projects or careers. 4-H members stay in the dorms and eat in one of the dining centers. Madisyn Day went last year, visit with her to learn more. More information will be posted on [the state website](#).

County 4-H Camp is at Silver Maple Campground in Kingman County. This is a 2 night camping experience for 7-12 year old members with teens serving as counselors. The groups participate in archery, crafts, paddle boats, swimming, and other learning experiences. A flyer is included with a registration form in this newsletter.

Rock Springs 4-H Center is hosting camps this summer. They have a variety of options that include longer stays at camp and teen leadership experiences. With the new camp format, all 4-H members can attend as a camper up to 18 years old. See the included flyer for more details.

Summer 4-H Interns will once again be in Barber County. They will have classes in both Kiowa and Medicine Lodge this summer. One class will be Reading Makes Cents that focuses on books and money. Other classes will be added in May.



Club Day Guidelines available online

Flipbook Link:
<https://heyzine.com/flip-book/ClubDayGuide>

Guideline Book is also available as a PDF on our website. If you would like a print copy, please call the Extension Office.

www.barber.k-state.edu/4-h/



4-H Council Meetings

MAY 20, 2024
IN MEDICINE LODGE
7:00 PM

SEPTEMBER 23, 2024
IN MEDICINE LODGE
7:00 PM
(FOLLOWED BY
RECORD BOOK
SCREENING)

Barber County Spring Show

MAY 4 & 5, 2024

Barber County Fair

JULY 25 - 28, 2024

Looking Ahead. . . .

March

- K-State Jr. Sheep Producer Day, March 16
- Regional Club Days, March 23
- Super Saturday Judging Contests Hays, March 23
- YQCA, March 24

April

- 2024 Insect Art Contest entry due April 15
- Spring Into Volunteering, April 20

May

- Last day to drop and add projects, May 1
- Spring Show & All Other Tagging, due May 4
- Spring Show Beef Classes, May 5
- 4-H Foundation Meeting May 7
- 4-H Council Meeting May 20

June

- Discovery Days in Manhattan, June 5-7
- 4-H County Camp, June 11-13
- Insect Spectacular, June 14-15
- Prospect Swine Tags Due June 15

July

Pre-Entries Due July 9

- Barber County Fair Fashion Show, July 17 & 19
- Barber County Fair Perishable Foods, July 19
- Barber County Fair Horse Show, July 20
- Barber County Fair, July 25-28

August

- Entry Deadline for non-livestock State Fair Exhibits - August 13

September

- Exhibits Due in Office for State Fair - September 3
- Kansas State Fair September 6-15
- 4-H Council Meeting September 23

Club News

Submit notes from your club meetings by the 20th of each month to reubank@ksu. to have them included here.



Reporter's Corner

Club News from Barber County



No Club Notes this month.

Scholarships

The Barber County Horse Scholarship and Barber County Fair Scholarship will be due with Fair Pre-Entries. Forms will be available in the first part of June.

Club Day Go-Getter Award

Total Points earned at the 02/24/2024 Club Day event then divided by total number of members in each club to arrive at the totals below.

Cloverleaf-----	2.3
Gyp Hill Pioneers-----	2.16
Stampede-----	3.6
Stateline-----	3.3
Sunflower-----	10.875
Sunny Lakers-----	6.36



Congratulations Sunflower!



FCS Judging Contest Results



Thanks to all who competed this year!

The following are the ribbon results for our FCS Judging Contest:

Junior

- Grady Hutson--Blue
- Hayden Hutson--Blue
- Kye Settle--Blue
- Braylee Waggoner--Blue

Intermediate

- Callen Corr--Blue
- Cara Whitaker--Red
- Chloe Whitaker-- Red
- Kennedy Walz--White
- Boyd Banks--White

Senior

- Kayla Rucker--Blue
- Garen Cantrell--Blue
- Vonda Landwehr--White

Adult

Congratulations to our Adults who competed this year: Micah Waggoner and Yvonne Burden



Record Book Roundup

MONTHLY TIPS FOR COMPLETING YOUR RECORD BOOK

Take Note This Month

- Review the Achievement Pin Level form in your Record Book. These forms were updated statewide this year. The changes were not major, but make sure you are working all year on this.
- Did you record your Club day presentations and results in your record book?
- Did you do the FCS Judging Contest? Make sure to put these results in your record book.

Record All Public Presentations

This is the time to check that you have enough General Project Forms and Animal Project Forms. Take the time right now to fill in the top 3 lines so you can keep track of each project on a separate page. If you need more, please call the office we can mail them to you.

We will be following the State Project Records. Market Beef and Breeding Beef should be put together under one Project Form for Beef. The same applies to Sheep, Goats and Swine. Care was taken when the books were filled to combine these projects when adding forms.

Section 5 is Leadership.

Remember to keep the leadership related to your project. If you served on a committee to provide goodie baskets to elderly, this would count for the Foods Project but not in the Rabbit Project. On the other hand, if you helped plan to bring a petting zoo to a day care, that could count for each of the projects that you took. So it could be listed on a Rabbit Report Form and a Goat Report Form.

NOTE: If you were asked to bring your rabbits and goats by somebody else that planned it. You should only list it in section 3 (Learning Experiences) and section 6 (Citizenship) but not section 5 (Leadership).

ANIMAL PROJECTS: Look at Section 7 as you are purchasing your animals. Speaking from experience, write down those purchase prices now. It will make the finishing up at the end of the year so much easier.

State Wide Events

Flyers, Images, Notes about State Wide Events

Spring Into Volunteering

The Association of Kansas 4-H Volunteers is hosting “Spring Into Volunteering” in Salina on the K-State Campus on Saturday, April 20. Registration will begin at 9 a.m. and the day will conclude at 3 p.m. This is for anyone serving as a 4-H Volunteer or considering it! The goal is for volunteers to go home recharged, excited, and ready to try some new things in their volunteer roles. Sessions for the day include: Understanding the 4-H Thrive Model, Record Books, Facilitation Sparks in SPIN Clubs, Hands-on Learning Techniques, and more. Registration for the day is \$20 and includes materials, snacks and lunch! Online registration is due April 1, 2024 and the fee will be submitted to the Barber County Extension Office. See flyer at end of newsletter.



Due Dates

May 1: Market Beef Nominations
June 15: Commercial Heifer and small livestock Nominations
July 15: Grand Drive entries
August 1: 4-H Horse Show Entries
August 14: Additional gate entry and parking tag orders due to Kansas State Fair
*August 15: Static and small animal (rabbit and poultry) Entries

*units with fairs after August 10 may submit static and small animal entries up to 5 working
 



YQCA

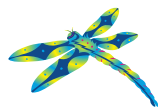
A Youth for the Quality Care of Animals Instructor-Led Training will be held on Sunday, March 24, 2024 at Pratt County Fairgrounds. Anyone aged 8 to 18 interested should register on the [YQCA website https://yqcaprogram.org/](https://yqcaprogram.org/). There is a \$3 fee and pre-test able to be completed on the website as well. See the flyer at the end of the newsletter.

4-H Super Saturday in Hays

The event will be held in Hays this year on the FHSU campus (Albertson Hall and Livestock Pavilion) on Saturday, March 23rd. We look forward to having a great turnout for the judging, and hope some will stay for the Project Opportunities and Volunteers and Parents will participate in the learning session for them as well. Youth 7-18 can participate see the flyer for all information about the day and the registration deadline!! There is a \$7 Registration Fee for one contest or if they choose to participate in any number of the provided contests. Sack Lunches for participants and parents can be ordered for \$8 each on the registration Qualtrics form. Project Opportunities are available from 1:00 to 3:00pm (IF you are NOT participating in the Livestock Judging Contest) see the additional information for details and cost

State Wide Events

Flyers, Images, Notes about State Wide Events



Incognito: Insects in Disguise 2024 Insect Art Contest



Participants of all ages are encouraged to enter in this year's Insect Art Contest. Incognito: Insects in Disguise is the theme and the idea is to discover camouflage used by insects. Make sure to submit your artwork and entry form by April 15, 2024! Please see the flyer at the end of the Newsletter.

K-State Junior Sheep Producer Day

Don't forget that the K-State Junior Sheep Producer Day is being hosted on Saturday March 16, 2024 in Weber Arena on the K-State campus in Manhattan. If you have registered for this event, please mark your calendar if you haven't already. It promises to be highly educational on everything involving selection and management of youth sheep projects, with an incredibly wide variety of experts and guest speakers.

Costa Rican Hosting

Kansas 4-H is committed to host five Costa Rican 4-S teens this summer. They will range in age from 15-18. Hosting them would give a family and chance to learn about 4-S(4-H in Costa Rica), the Spanish language, and their daily lives. The host family would be hosting between June 26 and July 21 and needs to have a host sibling for the Costa Rican who is the same gender and within 3 years of their age. Families lacking youth who qualify as host siblings may host an adult chaperone. The Costa Rican is placed from a national pool on a first come basis. Apply in March on [this site!](https://www.states4hexchange.org/apply/host/) (<https://www.states4hexchange.org/apply/host/>)



Event Calendar



SUNDAY	MONDAY	TUESDAY	WEDNESDAY	THURSDAY	FRIDAY	SATURDAY
					Market Beef Tagging Photos Due	Jr Beef Day & Photo Training
3	4	5 Regional Club Day Entries Due	6 Fair Board	7	8	9
10	11	12	13	14	15	16 Junior Sheep Day
17	18	19	20	21	22	23 Regional Club Day
24 YQCA	25	26	27	28	29 Extension Office Closed	30
31						



SUNDAY	MONDAY	TUESDAY	WEDNESDAY	THURSDAY	FRIDAY	SATURDAY
	1	2	3	4	5	6
7	8	9	10 Fair Board	11	12 Courthouse closed through April 15 for repairs.	13
14	15 Insect Art Contest	16	17	18	19	20 Spring into Volunteering
21	22 Entry due	23	24	25	26	27
28	29	30				



SUNDAY	MONDAY	TUESDAY	WEDNESDAY	THURSDAY	FRIDAY	SATURDAY
	May 1st is the last day to drop and add Projects		1 Fair Board Camp Forms Due	2	3	Spring show and all other tagging due
5 Spring Show Beef Classes	6	7	8	9	10	
12	13	14	15	16	17	18
19	20	21	22	23	24	25
26	27 Extension Office Closed	28	29	30	31	



K-STATE

Research and Extension

Barber County

K-State Research and Extension is committed to providing equal opportunity for participation in all programs, services and activities. Program information may be available in languages other than English. Reasonable accommodations for persons with disabilities, including alternative means of communication (e.g., Braille, large print, audio tape, and American Sign Language) may be requested by contacting the event contact Robin Eubank-Callis two weeks prior to the start of the event at 620-886-3971 or reubank@ksu.edu. Requests received after this date will be honored when it is feasible to do so. Language access services, such as interpretation or translation of vital information, will be provided free of charge to limited English proficient individuals upon request.

Kansas State University Agricultural Experiment Station and Cooperative Extension Service

K-State Research and Extension is an equal opportunity provider and employer.

Barber County Office

118 E Washington
Medicine Lodge, KS 67104

620-886-3971

www.Barber.ksu.edu

Facebook:
www.facebook.com/barbercountyextension

Theme is "County Fair Era"

103rd Barber County Fair Fairbook Cover Contest

1st and 2nd Place covers will be used on the Fair Book

Rules:

1. Design must fit in the box (4 x 10.5 inches)
2. Design may be vertical or horizontal.
3. Design must be in black, white and gray.
4. Design may be hand drawn, computer generated or any other art medium.
5. Design must include:
 - "Barber County Fair"
 - "July 25-28, 2024"
 - "County Fair Era"
6. Design may include, but not required:
 - 103rd Annual Fair
 - Hardtner, Kansas (Location of the fair)
 - 4-H Clover and FFA Logo
7. Entries become property of the Barber County Fair Board and may be used as they see fit.
8. Entries must be returned to The Barber County Fair Board by April 2.

Entries may be mailed to:
Barber County Fair
c/o Barber County Extension Office
Medicine Lodge, KS 67104

Or Returned to
Lindsey Rhodes at South Barber Pre K – 6th
Or The Barber County Extension Office

Questions? Contact:
Barber County Extension Office at 620-886-3971

Barber County Spring Livestock Show "A Tribute to Danny Stewart and Terry Underwood"

Barber County Fairgrounds - Hardtner, Kansas



May 4-5, 2024

Entry Fees

- Small Animal - \$10 (Saturday ONLY)
- Beef - \$15 (Sunday ONLY)
- Showmanship - FREE

Prizes & Giveaways

**Cash Prizes: Grand & Reserve Grand Champions
Breed & Reserve Breed Champions**

\$2 bill awarded to each animal shown - Includes Breeding & Market

SHOWMANSHIP

Prizes for Grand, Reserve and 3rd Place

Entry Deadline

Entry form AND Cards for each specie must be turned in by designated time each day.

- Swine - 9:00 AM (Saturday)
- Goats - 10:30 AM (Saturday)
- Sheep - 11:30 AM (Saturday)
- Cattle - 10:30 AM (Sunday)

Hotel Accommodations:

- Kiowa Motel (620) 825-4040
- Gyp Hills Guest Ranch (620) 886-3303
- Hardtner Guest Lodge (620) 296-4440

For more information call

Gina Stewart (580) 829-1315

Show Order & Times

Saturday

Showmanship prior to each specie

10:00 AM

- Swine
- Goats
- Sheep

Sunday

11:00 AM

- Showmanship
- Breeding Heifers
- Market Beef

SHOW RULES

Swine

- Must be born after January 1, 2024
- Maximum weight 165 lbs.
- 1st and 2nd place subject to weigh back (10 lbs.)

Goats

- Must have milk teeth present
- Maximum weight 85 lbs.
- 1st and 2nd place subject to weigh back (5 lbs.)
- Must have USDA premise ID tag

Sheep

- Must be born after January 1, 2024
- Maximum weight 110 lbs.
- 1st and 2nd place subject to weigh back (5 lbs.)

Beef

- Shown by weight
- Blow and Show (no paints, glue, adhesives, glues or boning soaps)

State of KS Animal Health requirements for County Shows will be followed

Entry Form

Pre-Entries must be postmarked by April 26th
Mail Entry to: Barber County Spring Livestock Show
c/o Janie Stewart, 200 S. Church, Hazelton, KS 67061

Exhibitor Name _____ Age (on Jan 1, current year – Must be age 7 to exhibit)

Address _____ City _____ State _____ Zip _____

Phone Number (Please list contact number during show) _____ Email _____

Showmanship (FREE) (Exhibitors will be placed in Showmanship Classes according to age. Sr. 14-18, Int. 10-13, Jr. 7-9.)

____ Swine ____ Sheep ____ Goat ____ Beef

Class Entry	Number of Head*
SWINE	
Breeding Gilt	_____ x \$10 = \$
Market Swine	_____ x \$10 = \$
SHEEP	
Breeding Ewe	_____ x \$10 = \$
Market Lamb	_____ x \$10 = \$
GOAT	
Breeding Doe	_____ x \$10 = \$
Market Goat	_____ x \$10 = \$
BEEF	
Breeding Heifer	_____ x \$15 = \$
Market Beef	_____ x \$15 = \$

*Breed, tag number(s), and/or tattoos will be asked for at registration on cards.

Entry for: Saturday Sunday

Total: _____

Office Use Only: Cash: _____ Check No.: _____ Pre-Enter Date: _____
Received by (initial): _____ Amount: _____

INCOGNITO: INSECTS IN DISGUISE

2024 INSECT ART CONTEST

Who & What: The Kansas State Pesticide Safety and IPM Program is hosting an insect-themed art contest. This year's theme is "Incognito: Insects in Disguise." The goal is to explore how and why insects camouflage.

Participants of all ages are welcome to submit a work of art featuring an insect that can camouflage.

AGE GROUPS

- Kindergarten - 2nd Grade
- 3rd Grade - 5th Grade
- 6th Grade - 8th Grade
- High School
- Adults

CATEGORIES

- Illustrates a real life insect
- 3-D (sculpture, stained glass, or other media)

AWARDS

Prizes will be awarded for each art type in each age group for 1st through 3rd place.

How to Enter: Fill out an entry form and send with your insect artwork by **April 15, 2024**.

See full rules and details at:

<https://www.ksre.k-state.edu/pesticides-ipm/>





SIGN UP NOW

4-H CAMP 2024

JUNE 11-13

**AT SILVER MAPLE CAMP
IN KINGMAN COUNTY**

**COST IS \$125 INCLUDING ALL MEALS,
ACTIVITIES AND LODGING**

**CAMPERS BETWEEN 7 AND 12 YEARS OLD
COUNSELORS NEED TO BE 14 AND OLDER
COUNSELORS WILL ARRIVE ON JUNE 10 FOR TRAINING.**

**PARTICIPATING COUNTIES: MEADE, COMANCHE, KIOWA,
BARBER, HARPER, KINGMAN AND RENO**



**SCHOLARSHIPS
AVAILABLE FROM
BARBER COUNTY
4-H FOUNDATION**



K-STATE
Research and Extension





SIGN UP NOW 4-H CAMP 2024

**JUNE 11-13
AT SILVER MAPLE CAMP IN KINGMAN COUNTY
COST IS \$125 INCLUDING ALL MEALS,
ACTIVITIES AND LODGING**

Return to your County Extension Office by May 1ST

Name: _____ Current Grade: _____

Parent / Guardian: _____ Male or Female

Phone: (Home) _____ Work or Cell: _____

Mailing Address: _____

City & Zip Code: _____

T-shirt Size: (Please Circle) Youth or Adult XS S M L XL

Make Checks payable to your local 4-H Council.

Return form and payment to local County Extension Office.


[To apply for a scholarship, write a letter to the 4-H Foundation about why you want to attend camp.](#)

K-State Research and Extension is committed to providing equal opportunity for participation in all programs, services and activities. Program information may be available in languages other than English. Reasonable accommodations for persons with disabilities, including alternative means for communication (e.g., Braille, large print, audiotape, and American Sign Language) may be requested by contacting the event contact Robin Eubank-Callis two weeks prior to the start of the event May 30, 2024, at 620-886-3971. Requests received after this date will be honored when it is feasible to do so.

Language access services, such as interpretation or translation of vital information will be provided free of charge to limited English-proficient individuals upon request.

**Kansas State University Agricultural Experiment Station
and Cooperative Extension Service**

K-State Research and Extension is an equal opportunity provider and employer.



CALLING ALL ADVENTURERS CLIMBERS FLIPPERS & BUG CATCHERS!



Registration for 4-H camp at Rock Springs Ranch is now open!

At Rock Springs Ranch, campers unplug, make friends, learn lifelong skills and have fun in the Flint Hills of Kansas.



Register Now!

Visit us online to learn more about 4-H camp!

Mini-Camp
Rising 1st-3rd graders
Session #1: July 14-16

Half-Week
Rising 3rd-12th graders
Session #1: June 2-5
Session #2: June 5-8
Session #4: June 16-19
Session #5: June 19-22
Session #7: June 30-July 3

Week-Long
Rising 3rd-12th graders
Session #1: June 9-14
Session #6: June 23-28
Session #8: July 7-12

LIT
(Leaders in Training)
Rising 10th-11th graders
Session #1: June 9-14
Session #2: June 23-28

CIT
(Counselors in Training)
Rising 12th graders
Session #1: June 9-14
Session #2: June 23-28
Session #3: July 7-12



2024
K-STATE

MARCH 16



PRODUCER DAY

Join us for K-State Junior Sheep Producer Day on Saturday, March 16, 2024, in Weber Hall on the Kansas State University campus. Presentations and demonstrations will be provided by featured guests, as well as K-State faculty, staff, and students. This event will be a fun-filled, educational day of activities in which youth, parents, extension agents, and sheep project leaders can increase their knowledge of youth sheep project selection and management. Topics include project selection, nutrition and feeding, facilities, health, reproduction, meat science, wool, clipping and grooming, showmanship, and an optional YQCA certification at the end of the day. This event is designed for all ages and skill levels. Lunch is included. The registration fee is \$20/person for those who sign up by February 26, or \$25/person for those who register after that date. Only those who register by February 26 will receive a t-shirt. This is a family event! Anyone attending, including both youth and adults, must register.



- 8:30AM Check-in & Registration
- 9:30AM Welcome
- 9:45AM Project Selection
- 10:30AM Morning Breakout Sessions
 - Nutrition, Facilities & Equipment, Starter Flock
- NOON Lunch
- 12:45PM Health
- 1:30PM Afternoon Breakout Sessions
 - Wool, Showmanship, Clipping & Grooming
- 3:45PM Wrap-up & Dismissal
- 4:00PM YQCA Certification & State Livestock Nominations (optional)

- Registration Deadline: February 26
- Registration Fee: \$20/person
- Registration Link: <http://bit.ly/ksuasiregister>
- Late Registration: \$25/person
- *All attendees must register, including youth & adults.
- **Late registrants will not receive a t-shirt.
- ***To register by mail, contact Lexie for a form.

K-State Research and Extension and the Department of Animal Sciences & Industry, or their assignees, reserve the right to photograph, record the image and/or voice of participants for future research, educational, or promotional purposes. By attending, you provide consent to the above items and waive all rights to claims for payment or royalties in connection with any use of said images or recordings, unless you notify event organizers you withhold consent, in writing, prior to the event.

Questions

Lexie Hayes

785-532-1264

adhayes@ksu.edu

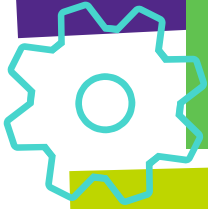


K-State, County Extension Councils, Extension Districts, and U.S. Department of Agriculture Cooperating. All educational programs and materials available without discrimination on the basis of race, color, religion, national origin, sex, age, or disability.

SPRING INTO VOLUNTEERING



SATURDAY, APRIL 20, 2024



KANSAS STATE UNIVERSITY
SALINA AEROSPACE AND
TECHNOLOGY CAMPUS



Who should register:

This is for anyone serving as a 4-H Volunteer or considering it!

Registration:

Registrations should be submitted online and payment taken to your local by the local office by April 5, 2024.

Cost:

The cost per participant is \$20 includes lunch and program materials.

Attire & What to Bring:

Dress for the day is casual and bring something to take notes.

Schedule for the Day

Registration will begin at 9 a.m. and the day will conclude at 3 p.m.

Sessions for the day include:

- Understanding the 4-H Thrive Model
- 4-H Record Books
- Facilitating Sparks in SPIN Clubs
- Hands-on Learning Techniques
- Kansas 4-H International Opportunities
- and more!

Event Objective

4-H Volunteers will go home recharged, excited, and ready to try some new things in their volunteer roles.



Accommodations:

K-State Research and Extension is committed to providing equal opportunity for participation in all programs, services and activities. Program information may be available in languages other than English. Reasonable accommodations for persons with disabilities, including alternative means for communication (e.g., Braille, large print, audio tape, and American Sign Language) may be requested by contacting Beth Hinshaw by March 20, 2024 at bhinshaw@ksu.edu. Requests received after this date will be honored when it is feasible to do so. Language access services, such as interpretation or translation of vital information will be provided free of charge to limited English proficient individuals upon request.

Kansas State University Agricultural Experiment Station and Cooperative Extension Service.

K-State Research and Extension is an equal opportunity provider and employer.

K-STATE
Research and Extension





Youth for the Quality Care of Animals Instructor-Led Training

SUNDAY, MARCH 24, 2024

1:00 PM - 3:00 PM

Pratt County Fairgrounds

BEFORE THE TRAINING

Please Register on the YQCA Website

Use the QR Code or the YQCA Website Link:

<https://ycqaprogram.org>

Select "YQCA Training - Pratt County"

Pay the \$3 Fee & Complete the Pre-Test

Available for Ages 8 - 18

Questions? Contact Jenna Fitzsimmons

jbfitzsimmons@ksu.edu or 672-6121

K-State Research and Extension is committed to providing equal opportunity for participation in all programs, services and activities. Program information may be available in languages other than English. Reasonable accommodations for persons with disabilities, including alternative means for communication (e.g., Braille, large print, audio tape, and American Sign Language) may be requested by contacting the event contact Jenna Fitzsimmons two weeks prior to the start of the event, March 10, 2024, at jbfitzsimmons@ksu.edu or 620-672-6121. Requests received after this date will be honored when it is feasible to do so. Language access services, such as interpretation or translation of vital information will be provided free of charge to limited English proficient individuals upon request. Kansas State University Agricultural Experiment Station and Cooperative Extension Service. K-State Research and Extension is an equal opportunity provider and employer.



Club Day February 24, 2024 at South Barber High School

Music

- **Senior Vocal Ensemble**
- Mills Family - Top Blue--Regionals
- **Junior Vocal Ensemble**
- Karlie Mills & Kaylee Myers - Top Blue--Regionals
- **Senior Vocal Solo**
- Vonda Landwehr - Top Blue
- Thomas Mills - Alt. Top Blue
- **Junior Vocal Solo**
- Kynlee Rucker - Alt. Top Blue
- Braylee Waggoner - Top Blue--Regionals
- **Senior Instrumental/Piano Solo**
- Thomas Mills - Top Blue--Regionals
- **Junior Instrumental/Piano Solos**
- Livia Miller - Alt. Top Blue
- Kaylee Myers - Top Blue--Regionals
- Dani Mixon - Blue

Show and Tell (Cloverbuds)

- Jasper McNally - Participant
- Remi Miller - Participant
- Sutton Rhodes - Participant
- Kase Rucker - Participant
- Blaine Waggoner - Participant

Drama

Dance

- Braylee Waggoner - Top Blue--Regionals

Public Speaking

- Martin Mills - Top Blue--Regionals

Project Talks

- Jancey Goodno - 1st Alt. Top Blue
- Janda Goodno - Top Blue--Regionals
- Brecklyn Hiltner - Blue
- Hayden Hutson - 2nd Alt Top Blue
- Livia Miller - Blue
- Piper Rhodes - Top Blue--Regionals
- Kye Settle - Blue

Intermediate Gavel Game

- Sunflower - Top Blue--Regionals

Readings

Junior Readings

- Callen Corr - Blue
- Grady Hutson - 1st Alt. Top Blue
- Brandon Lambert (video) - Blue
- Keagan McMurray - Top Blue--Regionals
- Paisley Marshall - 2nd Alt. Top Blue
- Karlie Mills - Blue
- Kynlee Rucker - Blue
- Kye Settle - Blue
- Braylee Waggoner - Top Blue--Regionals

Senior Readings

- Tanith Erikson - Top Blue--Regionals
- Kayla Rucker - Top Blue--Regionals
- Kooper Wesley - Blue

Junior Demonstrations & Illustrated Talks

- Boyd Banks - Top Blue--Regionals
- Callen Corr - 1st Alt. Top Blue
- Dani Mixon - 2nd Alt. Top Blue
- Kaylee Myers - Red
- Beau Wesley - Red
- Keagan McMurry - Top Blue--Regionals

Senior Demonstrations & Illustrated Talks

- Trilbey Dorsey - Red
- Jacob Mills - 2nd Alt. Top Blue
- Christopher Myers - Red
- Kaitlyn Myers - 1st Alt. Top Blue
- Kayla Rucker - Top Blue--Regionals
- Callan Smith - Top Blue--Regionals
- Kooper Wesley - Blue

**Regional Clubs Day is March
23rd in Medicine Lodge.
Members receiving a Top
Blue need to call the
Extension Office by March
5th to sign up.**





NW 4-H

Judging Event

Super Saturday

Saturday, March 23, 9:00am - Finish

Host Site: FHSU Albertson Hall on campus and Livestock Pavilion north of I-70. Hays, Kansas

Judging Contests include:

Crops, Entomology, Horticulture, Life Skills, Photography, Livestock Skill-a-thon and Livestock Judging

Project Opportunities: (These are for NON-LIVESTOCK Judging youth)

- 1) KS Shooting Sports Ambassadors will host a non shooting, educational, hands-on activity.
- 2) The Ins and Outs of the dog project - make a parachute cord leash and other dog project related learning activities - \$8.00
- 3) Hands-on STEM activities that coordinate with basic engineering and match up with several 4-H projects.
- 4) Club meeting ideas, activities and challenges, that are great for officer leadership teams.
- 5) Fiber Arts - Bohemian Macramé wall hanging - \$15

Volunteer Sessions for Parents and Volunteers - Free

Sack Lunches provided with mandatory RSVP - \$8.00



Registration Link:

https://kstate.qualtrics.com/jfe/form/SV_6n7ovscdg5SbzEO

If you have any questions concerning this event, you may contact Robyn Trussel at 785-798-5020 or rdeines@ksu.edu or Chandra Plate at 620-388-7157 or cplate@ksu.edu

Time Line:

March 15th - Registrations for lunch and Project opportunities due

March 23rd:

- 9:00am to 12:30pm - Indoor Judging (Crops, Entomology, Horticulture, Photography, Life Skills, and Livestock Skill-a-thon)
- 10:00am to noon - Volunteer/ Parent Session
- 11:30am to 12:30pm Pick up Sack Lunch
- 12:30pm Check in for livestock Judging at Livestock Pavilion , north of I-70
- 1:00pm Livestock Judging Orientation
- 1:00pm to 3:00pm Project Opportunities
- 1:30pm Livestock Judging Contest Begins

Results:

Livestock Judging Classes will be talked at the conclusion of reasons being given, all other contest results will be sent out 5-7 business days after the event.

Who: Any 4-H or FFA Youth 7-18 years of age, plus volunteers and parents

Where: FHSU Albertson Hall second floor for Indoor and Livestock Pavilion North of I-70
for Livestock Judging

Cost: \$7 per individual (1 contest or multiple)

\$8 Sack Lunch- Sandwich, chips, fruit, cookie and drink

Project Opportunities : Shooting Sports (Free), Dog Project (\$8.00)

STEM Activities (FREE), Club Activities (Free), Fiber Arts (\$15.00)



Contest Divisions:

Juniors - age 7-8 participation prizes only

Intermediates - age 9-13

Seniors - age 14 and over



Team Notice -- A younger member may move up an age group to complete a team but will be required to complete the requirements of the age division through the entire contest.

Awards:

Certificates and medals will be awarded in the intermediate and senior divisions. The top three individual and the top team will receive medals. The top 10 individuals and top 3 teams will receive certificates. Medals and Certificates will be delivered to the home county at the earliest time possible. Junior division will participate as a "learning experience" and receive a 4-H incentive at each judging area. Results will be posted to <https://www.walnutcreek.k-state.edu/>

NW 4-H Super Saturday Judging Event Eligibility Requirements: Any current member of a 4-H Club and/or FFA chapter is eligible to participate.

Judging Teams: a county, district or chapter may enter one or more three/four member teams in all judging contest areas. Present team member names at registration. If team are not identified at registration they will not be scored as a team. Top 3 scores will be used to determine team score. Team members must be from the same local unit.

Livestock Judging: Laurel & Logan Despain, Eva Hinrichsen, Jenilee Godsey

This judging contest is designed to teach youth how to analyze market and breeding beef, goats, sheep and swine, measuring them against a standard that is commonly accepted as ideal. There will be six classes. Juniors and intermediates will have 2 classes of questions, with no reasons. Seniors will give two sets of reasons. Officials will give placings and talk the classes at the end of the contest and awards will be announced.

Crops: Justin Goodno and Stacey Campbell

The contest will consist of identification of plants and samples, classification of samples (crop, noxious weed or common weed) all youth will identify 100 samples (50 seeds and 50 plants) a tie breaker of 6 samples will be used.

Entomology: Jake Faulkender, Kelsi Luman, Ashley Conness, Kristy Packard

The contest is designed to help youth learn how to properly identify Kansas insects. Each division will identify insect specimens, Juniors will identify 15, Intermediates 20 and Seniors 25.

Horticulture: Ryan Engel, Jay Harris and Master Gardener Volunteers

The contest will consist of 3 or 4 judging classes of any horticulture section (vegetables, flowers, nuts, etc.)The identification contest will include 15 samples for juniors, 50 samples for intermediates and seniors.

<https://www.k-state.edu/hort-judging/> for identification resources.

Life Skills: Karrie Van Winkle

Judging topics will be chosen from any 4-H project life skill, these could include, family consumer science, foods & nutrition, health & Safety, human development, housing, interior design and environmental issues. Junior division will judge 3 classes, intermediates 4 classes and seniors 6 classes.

Photography: Christy Befort and Photo Action team volunteers

The contest will consist of six classes of photos, a written test, and a problem class. Juniors will only judge the photos. Test questions will come from the 4-H CCS curriculum, the 4-H Guide to digital photography, the national Geographic Ultimate Field guide to Photography (2009) and other photography reference material.

Livestock Skill-a-thon: Tamara Robertson, Laurel Despain and Jenilee Godsey

The contest is designed to provide a framework for youth to learn a variety of topics related to the production and management of beef cattle, meat goats, sheep, and swine. The contest will consist of 6 areas, including: livestock breed identification, equipment identification, wholesale and/or retail meat cut identification, anatomical identification, livestock feedstuff identification, and a written test. Juniors, Intermediates, and Seniors will complete all 6 areas with increasing difficulty for each age division.

Volunteer and Parent Session will share the updated Kansas 4-H Policy, Club Parent Committees information and a Q& A time for Parents and Volunteers to walk away with resources to Make the Best Better