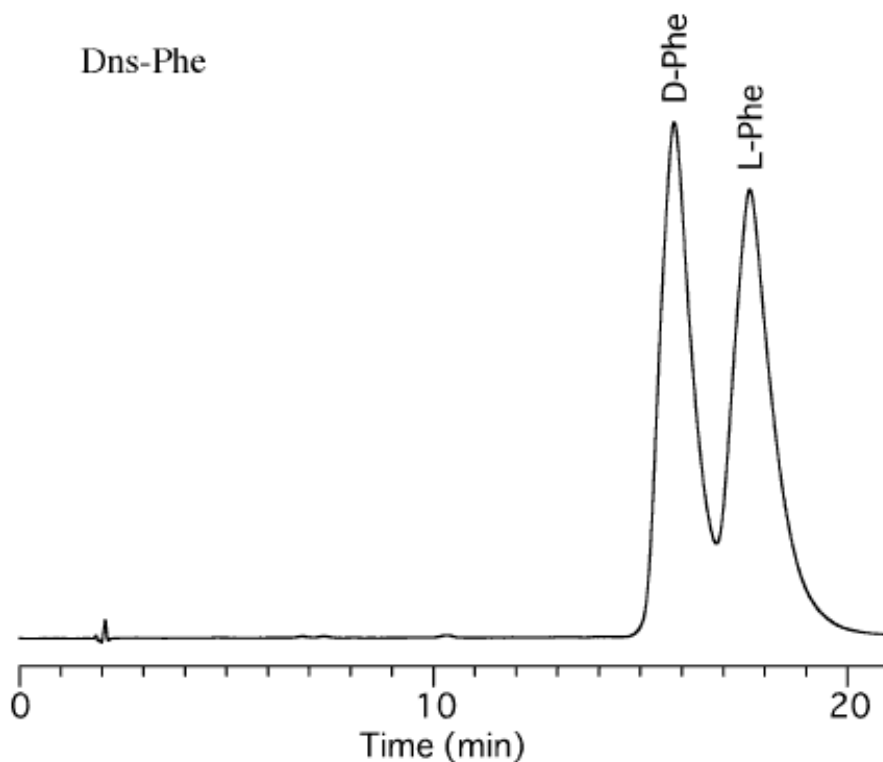


Analysis of Dansyl-Phenylalanine (Phe)

Data No. LA385-0000



Column : Bioptic AV-1
5 μ m
150 \times 4.6 mm I.D.

Solutes : 1. Dansyl-D-Phe
2. Dansyl-L-Phe

Column Cat. No. : 5020-02511

Eluent : MeCN / 50mM phosphate buffer (pH6.6) = 2 / 98 (w / w)

Flow rate : 1.0 mL/min.

Col. Temp. : 40°C

Detection : UV 254 nm

Injection Vol. : 2 μ L

Sample : Dansyl derivatives