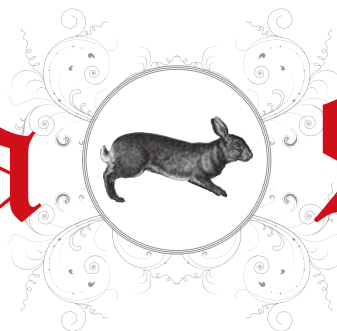


Winchelsea Star

Price \$1



Your Weekly Community Newspaper

Vol 45 Ed 50

Tuesday 20 December 2022

winchelseastar.org.au



Ken McDonald handing over a \$500 donation towards the Winch House end-of-year celebration. The Community Bank Winchelsea has been highly supportive of Winch House over the years.



MERRY
CHRISTMAS
& HAPPY NEW YEAR




Time for a dip!
WINCH POOL OPEN
12pm-6pm daily*
 *The pool is closed on Christmas Day, Boxing Day, New Year's Day and Catastrophic fire danger days.

WINCHELSEA Pool | Surf COAST SHIRE



Update:
Winchelsea Mud Hut Renewal

Thank you to community members who recently provided feedback on the Winchelsea Mud Hut Renewal.

Located in the Barwon River Gathering Space, the much-loved hut – which is closed due to its failing structure – was scheduled to be replaced in January 2023 however we have found a microbat family living in the hut which requires investigation.

We have also taken on board community input, through a petition received at the Surf Coast Shire Council meeting on 13 December 2022.

We are committed to working with community members on the next steps for a suitable replacement for the mud hut.

We will run further community engagement in early 2023, with opportunities on how you can have your say to be promoted in The Winchelsea Star and through Council communications channels. Feedback will help us present options to Council on how the new structure will look.

5261 0600 | surfcoast.vic.gov.au/request



Winchelsea Wildlife Shelter (auspice) Report

By Barb and the many fury friends at the Winchelsea Wildlife Shelter

Thank you Winchelsea Community House for auspicing the Winchelsea Wildlife Shelter once again.

We are very grateful to be able to now purchase a brand new washing machine to lighten the load of hand washing.

With onset of spring and many orphan marsupials coming through our doors we will be overwhelmed with many pouches to change, wash and disinfect. Now this task will be less time consuming and less of a chore.

Once again a massive wave of gratitude to you all.





Winch House Xmas Party Closes Out 2022

by Tony Phelps, Chair

Around 20 staff, volunteers and Committee celebrated the end of the year at the Winchelsea Community House Christmas Party, just a week away from Christmas Day. Another 'interesting' year!

The Friday evening shindig was sponsored by Community Bank Winchelsea. Everyone enjoyed a delicious meal with a Honduran flavour by local La Caseta. Manager Wendy and Community Developer Jill put together a fabulous long table down the centre of the Shire Hall, a magnificent venue for such an event. Ken McDonald officially handed over the \$500 donation toward the celebration on behalf of the Bank. Community Bank Winchelsea has been highly supportive of Winch House over the years.

There was also a donation from the Winchelsea CWA (Country Women's Association) of \$200, handed over by



Sandra Dixon. As an independent non-profit organisation facing very tight funding in the midst of all sorts of cost increases, both donations are very welcome.

Winch House closes for its normal annual break from the week before Christmas until mid-January. On behalf of the Committee, I'd like to say "Thankyou!" to the people that keep Winch House operating (staff and volunteers) and everyone that's called in to make use of the facilities. It's a great community asset, and we look forward to even more people

calling in and joining us in 2023.

There's lots more to come.



Summer waste and recycling

There are NO CHANGES to kerbside bin collection days during the festive season.

Put your bin out on the usual night.

Additional bin collections

All households that receive the kerbside bin service will receive one extra landfill and one extra recycling collection in the weeks following Christmas. To see when your extra collection will be:

- Download SCRRApp, the free Surf Coast Rubbish & Recycling App
- Download a calendar PDF at surfcoast.vic.gov.au/calendars
- Enter your address at 'My Neighbourhood' at surfcoast.vic.gov.au/mybin

Extra glass? Extra recycling?

Household amounts of sorted recycling (plastics numbered 1, 2 and 5, metal cans and tins, paper and cardboard), and glass bottles and jars can be dropped off at the Winchelsea Transfer Station for FREE

Winchelsea Transfer Station hours

The transfer station is closed on Christmas Day. Normal operations resume on Monday, 26 December.

Open hours are:

- 2pm-4pm Tuesday and Thursday
- 1:30pm-3:30pm Saturday
- 9:30am-12:30pm Sunday

Fire Danger Days

On days of Extreme or Catastrophic Fire Danger rating, waste services may be impacted. This may include changes to kerbside collections or opening hours at transfer stations and the Anglesea Landfill.

For more information, visit surfcoast.vic.gov.au/servicechanges

Download SCRRApp (the Surf Coast Rubbish & Recycling App) to receive notifications when changes to collections or waste facility operating hours occur.



surfcoast.vic.gov.au/SCRRApp



Food Organics and Garden Organics

Your kerbside FOGO bin takes ALL your food waste, and we really do mean ALL your food waste.

If you peel it, cook it or eat it, it goes in your green-lidded FOGO bin.

HERE ARE THE TRICKY ONES WE OFTEN FORGET:

- ✓ Bones e.g. chicken and turkey carcasses, fish bones
- ✓ Seafood including oyster, prawn, lobster, and crab shells and peelings
- ✓ Citrus peels, pits and stones (even avocado seeds)
- ✓ Dairy products including cheese, yoghurt, butter
- ✓ Eggs and eggshells
- ✓ Meat (raw, cooked and scraps)
- ✓ Mouldy and expired food (remove packaging first)
- ✓ Nuts and seeds
- ✓ Onion and garlic peels
- ✓ Coffee grounds and loose tea leaves

...AND DON'T FORGET ALL YOUR EVERYDAY FOODS LIKE:

- ✓ Baked goods e.g. bread, cakes, pizza
- ✓ Biscuits, chips, chocolate, lollies
- ✓ Fruit and veggie peels and scraps
- ✓ Leftovers and take-away foods
- ✓ Pasta and rice
- ✓ Salads and dressing

...OR THE GREEN WASTE FROM YOUR GARDEN:

- ✓ Cut flowers
- ✓ Weeds (including agapanthus)
- ✓ Prunings
- ✓ Grass/lawn clippings
- ✓ Small branches (less than 10cm diameter)

Your FOGO bin is emptied every week.

Remember to remove plastic or cardboard packaging before you put food waste in your FOGO bin.

Using your FOGO bin is great for our environment, and it frees up space in your red-lidded landfill bin too. The food and garden waste is composted and used to enrich soils on farms, orchards and parks.



For a full list of items accepted in your FOGO bin, scan the QR code or visit surfcoast.vic.gov.au/FOGO

Need more compostable caddy bags?

Pick up a roll of bags from the Winchelsea Transfer Station.

Check operating hours at

surfcoast.vic.gov.au/disposalsites

Using compostable bags is optional – instead you can rinse your caddy, or line it with paper towel.

Confused on bin night?



SCRRAApp's got you sorted.





Thank you!

What a wonderful community we live in! After the incident at the Bakery and Christine coming off second best with the car, it was decided that we would share some Christmas spirit and hold a small fundraiser to help her and Angel.



A big Thank-you to the Lions club for giving up their Saturday morning to man the BBQ.

During the morning a lady involved in an international Lions group stopped by for a chat.

- Paul and Lyn Maguire for the fundraiser idea and donation of a prize and their time.

- Modewarre eggs
- Kentys Bakery (who as we know received serious damage)
- GB Foods
- Barwon Plains wines
- Winchelsea Wholefoods
- Main Street MilkBar

A fantastic amount of \$1110.00 was raised and presented to Christine.

Council adopts awareness raising events calendar

National Reconciliation Week, IDAHOBIT Day, Seniors' Festival and Barwon Month of Action – Prevention of Violence Against Women are some of the awareness raising events Surf Coast Shire Council will continue to support over the next three years.

At its meeting on Tuesday night, Council adopted its awareness raising events calendar 2023-2025 to provide clarity and support forward planning of key events that raise awareness on matters of significance to our community.

The events calendar includes two new events, a one-off event to acknowledge the 40th anniversary of the Ash Wednesday bushfires, which will fall on 16 February 2023, and an annual event to acknowledge the impact of 26 January on First Nations people.

Council is collaborating with the Wadawurrung Traditional Owners Aboriginal Corporation on the event, which will be known as Pilk Purriyn, which means 'sunrise' in Wadawurrung language.

Date	Event
26 January (annually)	Pilk Purriyn ('Sunrise') day of reflection with Wadawurrung Traditional Owners
16 February	40 th anniversary of Ash Wednesday bushfires
8 March (annually)	International Women's Day
April - dates to be confirmed	National Youth Week
27 May – 3 June 2023	National Reconciliation Week including National Sorry Day (26 May)
17 May (annually)	IDAHOBIT Day
15-21 May 2023	National Volunteer Week
2-9 July 2023 (held first week of July annually)	NAIDOC Week
October - dates to be confirmed (annually)	Seniors' Festival
October - dates to be confirmed (annually)	Children's Week
November (annually)	Barwon Month of Action – Prevention of Violence Against Women
3 December (annually)	International Day of People with a Disability

Council's awareness raising events calendar 2023-2025

The calendar is not a listing of all events held in Surf Coast Shire and does not encompass the sporting and cultural events Council supports through other programs and service areas.

Cr Rose Hodge said Council was passionate about supporting events that raise awareness of key community issues. "This calendar lets our community know what awareness

events we're supporting in an official capacity and ensures we can allocate the necessary resources," she said.

"We know there are so many other worthy events we could support and this certainly doesn't diminish their importance in any way."

"It's great to have two new events added to the calendar, particularly Pilk Purriyn, which is an important step in our reconciliation journey."




SHEOAK CONSTRUCTIONS

Staircases | Feature Trusses | Tiling
New Homes | Extensions | Renovations

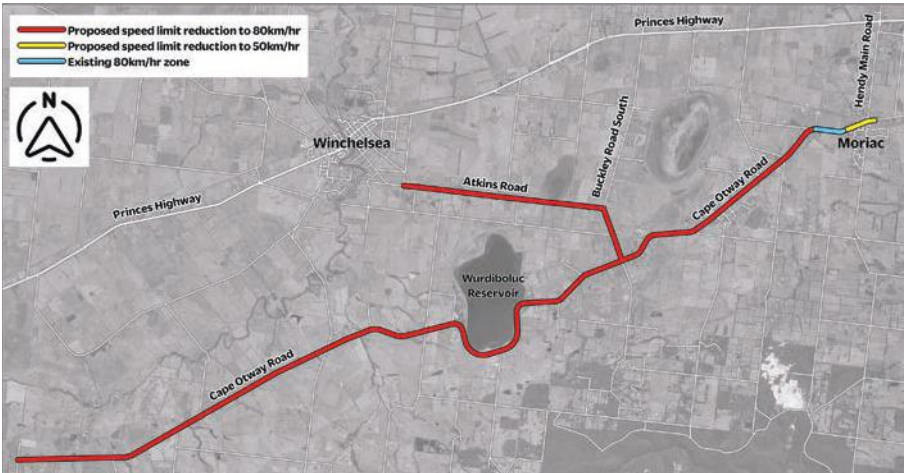
Call Adam on 0412 234 306



@sheoak_constructions
Sheoak Constructions


Proposed speed limit changes

Surf Coast Shire, working with Victoria Police and the Department of Transport, are considering speed limit reductions on roads in your area.



What are the changes proposed?


- Atkins Road, Winchelsea**
Current: 100kph default limit - Proposed: 80kph signed speed limit
- Buckley Road South, Atkins Road to Cape Otway Road**
Current: 100kph default limit - Proposed: 80kph signed speed limit
- Cape Otway Road, Moriac to Salt Creek Lane**
Current: 100kph default limit- Proposed: 80kph signed speed
- Cape Otway Road, Moriac township**
Current: 60kph signed speed limit- Proposed: 50kph signed speed limit



HAVE YOUR SAY

Feedback on the proposed changes can be provided online at surfcoast.vic.gov.au/speedlimit

Alternatively a hard copy of the survey can be requested via email to info@surfcoast.vic.gov.au





Farmers, lease your land for passive income

Lease your land for a solar farm and receive an additional passive income for 30 years and up to \$50,000 upon construction, all the while diversifying your income and increasing revenue

Call Jesse: (03) 4713 5709
jesse@bnrgleeson.com.au



We take care of everything for you

Winch House - Men's Shed (auspice) Report

By Frank Jeliff,
Winchelsea Men's Shed Secretary

We currently have twenty members on the list. Our AGM was held 7 July 2021. Office bearers were elected for the 2021/2022 year. Ray Atkinson continuing as Co-ordinator, Frank Jeliff as Secretary and Ray King as Treasurer. Cr Heather Wellington was guest chairperson for the meeting.

With the COVID-19 closures mostly behind us the Shed was able to operate almost pretty much as normal. We had some early COVID-19 interruptions. In July we were rostered on at the Anglesea Resale Shed, but unfortunately this was cancelled at the last minute due to a COVID-19 snap lockdown. We were unable to hold a September monthly meeting.

In September we took delivery of a large supply of marine ply which was generously given to us by a local. We also upgraded blades on one of the saws and added a new router to the workshop.

In December and January we took our turn at the Anglesea Resale Shed. The January takings were enormous. We had never been so busy.

In December we obtained a new gazebo. This was thanks to one of our members who had one available.

In February we took delivery of a new table saw. We began a process to update/replace our on-site defibrillator (more on that as we go). An order was placed for a new battery and replacement pads. We also upgraded the watering system in the Community Garden. Unfortunately it was observed that the garden is being raided and we needed to look at securing the area. A padlock was put on the gate.

In March we purchased a new laser printer. This has been a revelation as the replaced inkjet printer was costing too much for ink cartridges. Good riddance.

As we do have a small membership we decided that we needed to raise the

profile of the Shed and seek new members. With the help of the Winchelsea Star we now run a regular ad. John Bumford also co-ordinated a regular report for each edition. An update on the ongoing defibrillator saga - the wrong replacements parts were sent to us.

In April we were added to the roster for sausage sizzles at Torquay Bunnings. This came about as a result of discussions at the previous "Heads of Sheds" meeting where it was mentioned that we approach Bunnings to see if we can get on the roster. It was a very busy day for us old blokes but a great result for the Shed. The network with the other sheds is a valuable resource. We also took our turn at the Anglesea Resale Shed.

In May we hosted another sausage sizzle at Torquay Bunnings. Another successful day, especially with the added ability to accept electronic payments. Thanks to The Bendigo Bank and Ray King for setting this up. We have approached Corangamite Financial Services (Bendigo Bank) about a replacement defibrillator. Steps are in place for a new one.

The community garden is overseen by the Men's Shed and made operational and productive by the continuing hard work of Clive Milne and Clyde Stephenson. It was disappointing that we had to secure the garden due to theft but we hope that this is not going to be a permanent arrangement. Clive and Clyde put many hours into the garden and we would like to think that their labour is done for the benefit of many, not just a few. Community members are encouraged to take some of the produce for their needs. We hope for, but don't demand, a show of appreciation from either their skills by assisting in the



garden, or a donation in the box if they can afford the time or money.

Once again a big thank you to John Bumford our Publicity officer. John kept us abreast of the goings on in the community as well as feeding our input back to the various stakeholders where necessary (or not). John was also our conduit to the Winchelsea Star and other forums.

The sale of timber offcuts, kindly supplied by a Geelong business, has earned us a steady income through the winter months. The cost of \$5 per bag is cheap and assists the local community.

Shed income is also supplemented by small (and some not so small) jobs that the more skilled members of the shed complete for local people. Income from activities and projects goes towards maintaining the machinery and replacing it where necessary.

We thank the Surf Coast Shire for co-ordinating quarterly meetings for the Sheds under their jurisdiction. Terri Hannan ably co-ordinates these meetings where the leaders of the four Surf Coast Men's Sheds, Torquay, Anglesea, Lorne and Winchelsea gather for what is called "Heads of Sheds" meetings. These meetings are held at the different sheds on an alternating basis. They are a great source of information as well as for sharing ideas and resources across the region. These help to engender a good working relationship for all involved. We appreciate the work Terri puts in co-ordinating and chairing these catch-ups.

Thanks to our sponsors Eastwood Andrews and The Bendigo Bank.

The Winchelsea Men's Shed is open every Wednesday and holds monthly meetings on the first Wednesday of the month. We appreciate the support of the community and our sponsors who help to keep the Shed a thriving environment.



Winchelsea Star

Articles are most welcome and must carry the name and address of the sender.

Weekly deadline is 5pm Friday.

Copy for sports results and weekend events is Sunday 6pm (4pm for hard-copy articles/results left at IGA) unless by prior arrangement.

Copy should be emailed to news@winchelseastar.org.au or left at IGA Supermarket.

The Winchelsea Star reserves the right to edit or not publish any article.

Views expressed are not necessarily those of the Winchelsea Star or its Committee.

500 online subscribers, 250 copies printed for outlets around Winchelsea.

Free subscription to digital version at winchelseastar.org.au

© Winchelsea Star Org. Inc.
All rights reserved.

Winchelsea Star Organisation Inc.
Reg. No. A1479, ABN: 57 207 411 958
winchelseastar.org.au
Po Box 5, Winchelsea, Vic, 3241

Editors:

Cerrie Fogan, Yvonne Stevens
Judy Cameron
editor@winchelseastar.org.au

Advertising:

Sasha Gauntlett and Neil McInnes
advertising@winchelseastar.org.au
0408 102 802

Layout/Sub Editors:

Susan Corby, Charles Corby
Stuart Fountain
production@winchelseastar.org.au

Committee

President: Mick O'Mara
president@winchelseastar.org.au

Treasurer: Cathy Cheadle
treasurer@winchelseastar.org.au

Secretary: Tony Phelps
secretary@winchelseastar.org.au

Committee Members:
Linda Carter

Printer: Mud Group
Website: Winch Websites



WINCHELSEA CONCRETING

· Driveways · Sheds · Decorative Concrete · Raft Slabs

Robert Murphy

☎ 0438 235 237

✉ winchelseaconcreting@outlook.com



mels
MEL'S DANCE CENTRAL

2023 DANCE ENROLMENTS NOW OPEN!

Winchelsea dance
classes commence
1st February 2023

REGISTER NOW

www.melsdancecentral.com.au

Pre-School - Adults
Beginner - Advanced Levels

All About

Mowers & Chainsaws

Repairs to all makes and models of ride on mowers, domestic mowers, pumps, chainsaws, brushcutters and small engines.

Trading Hours: Mon - Fri 8am - 5pm Saturday 8am - 12 noon

5267 2266 Cnr Princes Hwy & Lennox St Winchelsea

www.allaboutmowers.com.au
accounts@allaboutmowers.com.au

FERRIS COX STIHL BRIGGS & STRATTON VICTA



Spray. Fan. Vet.

Preparing pets for summer

Summer is rapidly approaching and, with fewer pandemic restrictions in place, many Victorians are preparing for the holidays. Regardless of whether it's a vacation or a staycation, RSPCA Victoria calls on all pet owners to take appropriate measures to ensure the safety and wellbeing of their animals during warmer weather.

The wetter-than-usual summer forecasts may lead owners to believe temperatures will be less severe and lower their guard when it comes to caring for their animals. It is important for owners to understand how to properly care for pets in the heat and be familiar with the signs of an animal in distress. Preparing for summer will ensure the safety, comfort, and overall welfare of animals.

Planning and preparation are key to keeping animals happy and healthy during the summer and preventing a serious incident.

Always:

- Provide a cool, shaded area with good ventilation and air flow
- Ensure your pet has access to multiple sources of fresh, cool water.
- Make sure animals have access to shade and do not tether them – remember that shady places will change as the sun moves throughout the day.
- Make sure rugged horses are wearing summer weight rugs.
- Avoid exercising your pet in hot and humid conditions.
- If safe to do so, bring animals indoors on hot and humid days
- Remember that smaller pets such as birds, rabbits, guinea pigs and reptiles are highly susceptible to heatstroke and need extra attention

on warm days - move the animal and their cage to a cooler space with plenty of shade, water and ventilation e.g. the laundry or bathroom.

- Be aware of the heat stress symptoms your pet may exhibit so you can help them cool down.
- Ask someone to care for your animals if you are going away or consider using a boarding facility – if you have livestock ensure they can be checked regularly.

Despite predictions of a wetter-than-usual summer this year, high temperatures will still occur, which can lead to pet health emergencies including dehydration and heatstroke. While it is generally safe for pets to accompany their owners in the car, RSPCA Victoria urges people never to leave their animals unattended in a vehicle. Temperatures inside cars can rapidly reach unsafe levels - owners should be aware that it only takes six minutes for a dog or other animal to die in a hot car.

Treatment for heatstroke

If you suspect your animal is suffering from heatstroke, RSPCA Victoria recommends emergency first aid is applied immediately to help normalise the animal's body temperature:

1. SPRAY or apply tepid/cool water onto their fur or skin.
2. Do not use ice or ice-cold water on your pet as it can potentially worsen the situation.
3. FAN the animal to maximise heat loss.
4. If possible, wet down the area around your pet to lower environmental temperatures.
5. Take your animal to the nearest VET immediately - even if it looks like they have recovered. The vet can assess for organ damage and provide life-saving treatment in serious situations.

Symptoms of Heatstroke

The signs of heatstroke in animals are varied and may include:

- Relentless panting (increases as heatstroke progresses)
- Drooling or salivating
- Agitation or restlessness
- Very red or pale gums
- Bright red tongue
- Increased heart rate
- Breathing distress
- Vomiting, diarrhoea (possibly with blood)
- Signs of mental confusion, delirium
- Dizziness, staggering
- Lethargy, weakness
- Muscle tremors
- Seizures
- Collapsing and lying down
- Little to no urine production
- Coma

The best treatment for these conditions is prevention. All pet owners, regardless of whether they are staying home or travelling with pets, should remain mindful of the temperature on warm days and take appropriate steps to prepare their animals' environment and avoid potentially serious incidents.



Free Community Service Advertisements

Services and Activities in Winchelsea



TRAIN SERVICES

To Geelong

Mon - Fri

6:41 am, 7:59am, 11:34am,
2:01pm, 7:37pm

Sat and Sun

9:35am, 1:36pm, 7:18pm

To Warrnambool:

Mon - Fri

9:29am, 2:56pm, (to Colac
5:27pm), 6:45pm, 8:53pm

Sat and Sun

8:47am, 2:49pm, 8:37pm

Country Women's Association



7pm Second Wednesday of Month
Winchelsea Senior Citizens' Hall

Bus to the Hub

For reservations on the weekly bus
to the Eastern Reserve Hub,
please phone 52671202.

Surf Coast Mobile Library

Surf Coast Mobile Library
parked in Hesse Street
(outside Shire Hall) on Fridays
between 2:00 and 5:00pm
unless it is a Public Holiday.
Hesse St, Fridays, 2pm-5pm

Winchelsea Taxi

0429 672 888 or 5267 2888

Wheelchair accessible
10 seater bus available.

Winchelsea SES

Meeting and training
2nd Wednesday

Training 4th Wednesday

Visitors and inquiries welcome

0408 102 802

Winchelsea and District Combined Probus Club



Meets 1st Monday of the

month at 10am. Senior
Citizens Rooms, Harding
St, Winchelsea. New
members always
welcome.

Enquiries Linda 0439 817 263.

Body Therapy Classes

Yoga, Pilates, Qi Gung and Mindfulness Meditation Practices

Tuesdays 6.15pm \$13 Cash
Catholic Church Hall -School Term Only

Dr Haidee Benning, 0428 177 964

Winchelsea Playgroup

Every second Thursday 10am-12pm
St Thomas Anglican Church Hall
cnr Barwon Tce and Hopkins St, Winchelsea
Contact: Melissa 0456181268
Facebook - Winchelsea Playgroup 2019

New families welcome

Winchelsea Girl Guides

Our Unit meets at the Catholic Church
Hall, Harding St Winchelsea

each Monday 4.30pm-6pm

All girls 5yrs- 15yrs Welcome!

Contact Yvonne Orchard 0448 672 630

or Bonnie Stokes 0401 386 274

1st Modewarre and Winchelsea Scout Group

Joys: Tuesdays of school term 5-6pm

Cubs: Mondays of school term 6:30-8pm

Scouts: Tuesdays of school term
6:30-8:30pm

All at Modewarre Hall, Cape Otway Rd

Venturers: Wed at Walton's Rd Venturer Den

Contact Marie McPadden 0409 330147

Winchelsea Transfer Station

Opening Hours

Monday	Closed
Tuesday	2pm-4pm
Wednesday	Closed
Thursday	2pm - 4pm
Friday	Closed
Saturday	1.30pm - 3.30pm
Sunday	9.30am - 12.30pm

55 Cressy Road, Winchelsea.

Accepts household garbage,
mixed commercial and industrial waste,
mixed construction and demolition waste.

Accepts recyclable materials.

Accepts one recycle bin two waste bins.

Does NOT accept clean fill.

Summer health hazards and tips to avoid

By The Australian Digital Health Agency

Summer is a time for outdoor activities, BBQs, and soaking up the sunshine. However, The Australian Digital Health Agency is encouraging people to be aware of the potential health hazards that can come with the warmer weather.

Below are some things to watch out for and tips on how to stay safe and healthy this summer:

Heat stroke:

When the body is unable to regulate its temperature, it can lead to heat stroke. Symptoms include dizziness, headache, rapid heartbeat, and loss of consciousness. To prevent heat stroke, stay hydrated, avoid excessive alcohol consumption, and take frequent breaks in a cool place. Heat stroke is a medical emergency. The information in your My Health Record can help inform and support medical care in emergencies and your regular GP can be updated online for follow up treatment.

Sunburn:

Prolonged exposure to the sun can cause sunburn, which can increase the risk of skin cancer. To protect yourself from sunburn, apply sunscreen with at least SPF 30, wear protective clothing, and avoid the sun during the peak hours of 10 am to 4 pm. If you do get severe sunburn,

your doctor can prescribe a corticosteroid cream and upload a summary of the event to your My Health Record so skin damage can be monitored and inform further skin cancer screenings.

Insect bites:

Mosquitoes, ticks, and other insects can carry diseases and cause allergic reactions. To avoid insect bites, use insect repellent, wear long-sleeved shirts and pants, and avoid areas with standing water. If you are bitten by an insect and experience symptoms such as swelling, redness, or difficulty breathing, immediately seek medical attention and the details in your My Health Record, like allergies, medicines and history can assist healthcare providers to best deliver care.

Food poisoning:

Eating contaminated food can cause food poisoning, which can lead to symptoms such as nausea, vomiting, and diarrhea. To prevent food poisoning, make sure to properly store and handle food, keep raw and cooked food separate, and cook food to the recommended temperature. If you do experience symptoms of food poisoning, seek medical attention, and having the incident recorded in your My Health Record can provide context to your greater wellbeing journey.

Taking appropriate precautions can help ensure your safety, however, if things go sideways your My Health Record can be a valuable tool to manage your health this Summer.

Support for autistic kids under threat

The Australasian Society for Autism Research (ASfAR) held its sixth biennial international conference at Deakin's waterfront campus at Geelong, Victoria.

ASfAR provides a platform for participatory research, meaning autistic individuals at every stage of tertiary education drive the research agenda, and review proposals, to align the goals of the research community with the needs of autistic people.

The conference is timely, with the Minister for the National Disability Insurance Scheme (NDIS), Bill Shorten, suggesting that it might be repurposed to fund only "the most profoundly and severely impaired". With funding for autistic children under threat, ASfAR's conference convenor Dr Mark Stokes of Deakin University's Healthy Autistic Life Lab says, "this will result in the social isolation of some children, whose parents avail of NDIS funding to manage their early social deficits."

"Their condition may not be visible, and is diagnosed on the basis of behaviour, but it is no less urgent to address," he continues. "Without schemes like those funded by NDIS - they are often treated as having a personality defect," he concluded.

Winchelsea Hostel and Nursing Home Society Inc

CHANGE OF DATE Annual General Meeting

Notice is hereby given that the 2021/2022 Annual General Meeting for the General Public will be held at the Winchelsea Shire Hall and via Zoom on 24th January 2023, at 4.00pm.

Please contact Hesse on (03)5267 1200 or reception@hesse.vic.gov.au to receive the remote link invitation.

Business

1. To confirm the minutes of the 2021 Annual General Meeting.
2. To receive the report of the Committee of Management and the audited Statements of Accounts for the year ended 30 June 2022.
3. To appoint the Victorian Auditor General's Office as auditor.
4. To elect officers of the Association and members of the Committee.

Carissa Brock, Secretary

Knuckey's Winchelsea

Ph: 5267 2011

Knuckey's have in stock a complete range of batteries to suit tractor, heavy machinery, cars, utes

The largest range of the best oil for your vehicles—**CASTROL**—*'when only the best will do'*

The largest range of V belts.
A, B, C, D M Sections
Bolts and nuts for all occasions
Steel cut to size

Winchelsea Bowls Club

By Kitty 'n Jack

We have reached the halfway mark of the Pennant Season and will have a short break until Midweek Pennant resumes on the 10th of January 2023 and Saturday Pennant 14th of January.

PENNANT RESULTS

Tuesday December 6th

Division 1 def Apollo Bay at home, winning 2 rinks 89/57 shots.

Tuesday December 6th

Division 3 were def by Camperdown Golf away, 48/87 shots.

Tuesday December 13th

Division 1 commenced play at Lorne however all Division 1 matches across Corangamite were abandoned due to rain.

Ladder position 2nd on percentage only.

Tuesday December 13th

Division 3 were able to complete their match against Colac City at home. Winchelsea were def by City, winning 1 rink 59/69 shots. Ladder position 5th.

Saturday December 10th

Winchelsea 1 def Colac away winning 2 rinks, 199 shots to 90 shots. Ladder position 3rd.

Saturday December 10th

Winchelsea 3 def Camperdown Golf at home winning all rinks, 116/60 shots. Ladder position 1st.

Saturday December 10th

Winchelsea 4 were def at Lismore 28/64 shots. Ladder position 8th.

AROUND THE GREEN

Both Ladies and Men's Club events are continuing and are in various stages of completion.

On Sunday the 4th and Sunday the 11th of December the CBD State Singles Championships were played at both Colac City and Colac Central bowling greens.

Winchelsea had 8 men's entries and one lady entrant.

After day 1 five Winchelsea players remained.

On Day 2 Erin Baulch progressed to the ladies final but was def by Jodie Bertrand of Apollo Bay. Congratulations CBD Ladies Singles Champion Runner Up Erin.

At the end of day 2 two Winchelsea Men remained to play the final.

Ernie Andres and Jason Armstrong, well done to you both and we all look forward to a great final.

***Wishing all members
and friends of the
Winchelsea Bowls
Club a joyful and safe
Christmas season and
may the bowls
be with you!!***



**Winchelsea
Supermarket**

Trading Hours

Monday to Saturday

8.30am to 7.30pm

Sunday

10am to 7pm

Ph: 5267 2676

29 Main St, Winchelsea

Winchelsea Men's Shed



For The Community

51 Hesse Street

Every Wednesday from 9:30am

New members always welcome

For more detail contact:

Ray Atkinson (Co-ordinator)

0407 839 139

or

winchmensed@gmail.com

Need a job done?

Woodworking jobs,

furniture repairs, small jobs.

Drop in and talk to us.

DAVIC AG

CONTRACTING AND EARTHMOVING

For all your harvesting needs

Mowing, raking, round bailing, paddock prepping, spreading and sowing

Call Dave on **0417 579 973** Bambra

52672192 R & K Creative Framing
for all your framing needs

free quotes
pension discount
specialist in Age &
Disability Modifications

Ray & Kim Jansen
10 Witcombe st
Winchelsea 3241

Ray The Home
Maintenance HANDYMAN
abn 47928623462

0414672192



Café La Hoot

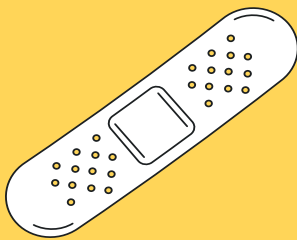
have you tried
'owl' coffee?

1 willis st cafelahoot@gmail.com 0407 528 999



THIS SUMMER, IF WE DON'T GET COVID WE CAN'T SPREAD COVID.

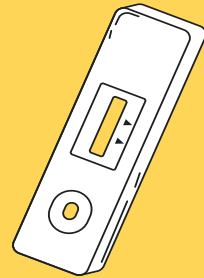
Staying well this summer can be as easy as



staying up to date with your booster vaccine.



talking to your doctor: if you are at risk of becoming unwell, you may be eligible for COVID medicines.



always testing with a RAT if you feel unwell.



staying home if you feel unwell.



catching up outdoors or in places with open doors and windows.



wearing a mask when it's crowded indoors.

coronavirus.vic.gov.au

STAY WELL THIS SUMMER



Winchelsea Churches

Rosalie Chappell

It is with much sadness that we mourn the passing of Rosalie Chappell. A service of thanksgiving for the life of Rosalie will be held on Thursday 22nd December at 2.00pm at the Winchelsea Uniting Church, Hesse Street, Winchelsea. Afternoon tea will follow the service. Sincere thoughts, prayers and condolences to Denis and family.

From members and friends of Winchelsea Uniting Church.

Carol Singing around the town

People interested in singing carols around town at predetermined locations are welcome to join a group of strolling singers and musicians from the Winchelsea Combined Churches and the community on Wednesday 21st December commencing at 5.00pm at Hesse Rural Health, Gosney Street, Winchelsea. All who would like to join in are welcome.

All the churches of Winchelsea are happy to welcome any who would like to join them for worship.

St Thomas' Anglican Church

in Barwon Terrace.
Phone Rev Lynne Clarke 0477 672 042
stthomaswac@gmail.com

Winchelsea Uniting Church

in Hesse Street meets at 9.30 am every Sunday morning.
Worship is followed by morning tea.
Phone 0475 777 301
uca.winchelsea@gmail.com

St John's Catholic Church

In Harding Street meets for Mass at 6.00pm on Saturday evenings.

Please contact Anita, 0409 432 833 or Father Joseph Panackal, 0404 598 558

CHRISTMAS MASSES
Winchelsea 9am Dec. 25

NEW YEAR MASSES
New Years Eve
Winchelsea 6pm Dec. 31

Winchelsea Uniting Church

Hesse St, Winchelsea 3241
uca.winchelsea@gmail.com
0475 777 301
Services 9.30am Sundays

St John's Catholic Church

Harding St, Winchelsea 3241
Father Joseph Panackal
0404598558

St Thomas' Anglican Church

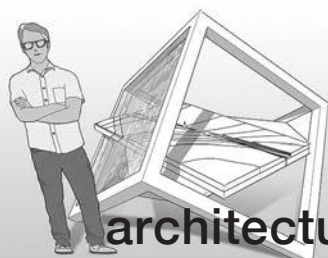
Barwon Tce, Winchelsea
Rev'd A. Lynne Clarke
stthomaswac@gmail.com
0477 672 042



Thought for the Week

“When you find yourself reaching for your phone, stop for a moment and check in with yourself about your purpose. Ask why? If there is no reason, or it's not a compelling one on reflection. Then put the phone down and make better use of your time.”

John Bader
Accredited Lay Preacher



3D design and visualisation

richard@studiobutcher.com | 0413 168 741

architectural models | 3D prints | product development



Play your role in managing bushfire risk

By Forest Fire Management Victoria

With grassfires a key concern for the South West region, the CFA is working alongside other local emergency services on significant preparation to ensure it is ready to respond to emergency incidents this fire season.

“Grassfires will be our main concern in the South West region this fire season,” CFA Acting Assistant Chief Fire Officer Wayne Aylmer said.

“Conditions right across the region are very wet right now, but we’ll start to see northern parts of the region begin to dry out sooner than areas in the south.”

Community members are encouraged to play their role in managing bushfire risk, in a team effort with CFA, Forest Fire Management Victoria, the Surf Coast Shire Council and local emergency services.

The Fire Danger Period for the Surf Coast Shire will begin at 1am on Saturday 24 December 2022.

The lead-up to the Fire Danger Period is an ideal time for people to renew bushfire survival plans and prepare their property to minimise risk to themselves, their family, and their community. Surf Coast Shire Councillor Gary Allen said residents had a responsibility to be fire prepared, which included preparing their



L-R: Stephanie Ryan - Project Leader Emergency Management Forest Fire Management Victoria, Surf Coast Shire Cr Gary Allen, and Gavin Fitzgerald - CFA Commander, Winchelsea Catchment

property at the earliest opportunity.

“Community members should reduce vegetation, with a focus on the areas closest to your house,” Cr Allen said. “To help with this, the Council has distributed three green waste vouchers to ratepayers so please utilise them. You can also call staff from the Council so they can attend your property and provide valuable advice on reducing your risk.”

Forest Fire Management Victoria (FFMVic) Deputy Chief Fire Officer Andrew Morrow said strategic fuel breaks around coastal townships and along the Great Ocean Road will be maintained as part of our summer

preparedness program.

“The FFMVic team will continue with mulching, grass slashing and mowing activities, and take opportunities to undertake planned burning when safe to do so around the Surf Coast Shire, to ensure safer communities. We will also be on readiness throughout summer to respond to bushfire.”

Surf Coast Shire residents and visitors are encouraged to stay informed about the weather and fire activity during the Fire Danger Period. Verified information sources include the VicEmergency app, Radio ABC 774, CFA website (cfa.vic.gov.au), Sky News television station, and the VicEmergency hotline (1800 226 226).



mainly music
est. 1990

Fun, Interactive music sessions for pre-school children (0-4 y.o.) and parents/caregivers

When: Mondays from 10 to 11 am (runs during school terms)

Where: St Thomas' Hall
25 Barwon Tce.

To Enquire ring: 0407838256

LIONS CLUB OF WINCHELSEA

PAPER RECYCLING

Paper depot rear of Senior Citizens Rooms Harding Street
NEWSPAPERS, MAGAZINES, PHONE BOOKS WANTED

SHEEP POO FOR SALE

\$5 per bag.
Available at paper depot rear of Senior Citizens Rooms Harding Street most mornings between 10 and 12 or contact David on 0410 029 857.



RAISING FUNDS FOR OUR TOWN & DISTRICT
5267 2011 or 0408 520 606



Kyeema
Rural Fencing Pty. Ltd.

Jason Armstrong & Jay Hawker

1080 Prices Lane, Ombersley, Victoria, 3241
0419 565085 (Jason)
0416 585817 (Jay)
kyeemafarm@kyeemafarm.com.au

Also incorporating domestic and rural tree trimming services.

Water Delivery

WAZZA'S
WATER CARTAGE

Stainless Tanker Up to 22,000 ltr loads
Barwon Water Registered

Domestic & Rural Water Supplies

Call Wazza
Mob: 0428 877 260
Email: wazza@wazzas.com.au Web: wazzaswater.com



Winchelsea Hospital Auxiliary Op Shop Update

By Ingrid Rowe (Sec).

The damage to the shop caused by flooding has been repaired.

With the assistance of the Winchelsea Lions Club members, the fittings and shelves have been restored.

The process of restocking the shop is to commence soon.

We anticipate opening early in the New Year.

We would like to extend our gratitude to those involved in the recovery.

To the Winchelsea Community, thank you for your continued support during what has been a challenging year.

The Hospital Auxiliary wishes everyone a Merry Christmas and a Happy New Year.

The opening date will be advertised in the Winchelsea Star and via the Community Noticeboard.

We look forward to our flags flying out in front of the Op Shop again soon.

What's on in Winch

SINGING

Winchelsea Community House has supported the beginning of a regular singing group at the Winchelsea Shire Hall. 2023 will see the continuation of weekly singing, commencing Wednesday 1st February 2023 at 4.45pm at the Shire Hall.

The cost is as follows:

10 weeks - \$70

Concession - \$50 (10 weeks)

Children under 16 - free

You are also able to attend on a weekly basis - \$10 a session.

Email your registration to shirehall@winchhouse.org.au

This is an inclusive group that welcomes anyone who wants to experience the joy of singing with others.

DANCING AT THE GLOBE THEATRE IN WINCHELSEA

When :: Saturday 31st New Years Eve

Time :: 8pm - 12.30pm

Cost :: \$15.00

Music supplied by Ron Sudden

Great supper provided, door prize and raffle.

Welcome in the New year in Winchelsea

Contact : Maureen 0409253188
or Charlie 0419501032

FOR SALE

Saxon 705AZ3 Pioneer Refractor Telescope for land and sky.

Compact and portable, and suitable for beginners and children. Comes with lenses, manual, map of moon and solar system. \$200 (RRP \$369.95)
Phone 0425 763 074.



NOTICE OF APPLICATION FOR A PLANNING PERMIT



The land affected by the application is located at: 940 Barwon Park Road & 915 Barwon Park Road & 805 Shelford Road, WINCHELSEA

The application is for a permit to: Use and development of a utility installation

The applicant for the permit is: Mr Ian Farran

The application reference number is: 22/0145 *Please quote this number when making enquiries*

You may look at the application and any documents that support the application at the office of the responsible authority:

Surf Coast Shire, 1 Merrijig Drive, Torquay VIC 3228

This can be done during office hours, 8:30am – 5:00pm Monday to Friday, and is free of charge.

You can view the application online through Council's eplanning portal:

<https://eplanning.surfcoast.vic.gov.au/Account/Login.aspx>

Any person who may be affected by the granting of the permit may object or make other submissions to the responsible authority. An objection must be made to the responsible authority in writing, include the reasons for the objection and state how the objector would be affected.

The responsible authority must make a copy of every objection available at its office for any person to inspect during office hours free of charge until the end of the period during which an application may be made for review of a decision on the application. A copy of all objections is provided to the Permit Applicant. If you object, the Responsible Authority will tell you its decision.

The Responsible Authority will not decide on the application before: **20 January 2023** (or until a minimum of 28 days after the last notice is given)

Item No. 50340

Planning and Environment Regulations 2005 Form 2

1 Merrijig Drive (PO Box 350) Torquay, 3228
P. (03) 5261 0600 E. planningapps@surfcoast.vic.gov.au



Winchelsea Community House

Hours: Monday – Friday, 9.00am - 2.00pm
 Address: 28 Hesse Street, Winchelsea
 Phone: 5267 2028
 Email: reception@winchhouse.org.au



**DID YOU KNOW WE RUN AN OCCASIONAL
 CHILDCARE SERVICE MONDAY TO FRIDAY
 FROM 9AM TO 2PM?**

**IF YOU HAVE A CHILD THAT IS 3 YEARS
 AND OVER WE CURRENTLY HAVE SOME
 VACANCIES FOR 2023.**

**THESE PLACES WILL FILL QUICKLY SO CON-
 TACT US NOW TO SECURE YOUR PLACE**



**WINCHELSEA COMMUNITY HOUSE IS
 LOOKING FOR SOME TUTORS TO RUN PRO-
 GRAMS AND ACTIVITIES IN 2023. IF YOU
 HAVE A PARTICULAR SKILL THAT YOU
 WOULD LIKE TO SHARE AND TEACH OTH-
 ERS WE WOULD LOVE TO CHAT WITH YOU.**

TYPES OF SKILLS MIGHT BE

COOKING

ARTS AND CRAFTS

SOCIAL MEDIA SKILLS

YOGA/MEDITATION

AUSLAN

**KEY DATES FOR CHRISTMAS AND NEW
 YEAR**

**LAST DAY FOR THE OFFICE FOR 2022 WILL
 BE THURSDAY 22ND DECEMBER (CLOSING
 AT 12 NOON)**

**FIRST DAY BACK FOR THE OFFICE WILL BE
 MONDAY 16TH JANUARY, 2023**

**LAST DAY FOR OCCASIONAL CARE IS
 MONDAY 19TH DECEMBER, 2022**

**FIRST DAY BACK FOR OCCASIONAL CARE IS
 WEDNESDAY 18TH JANUARY, 2023**

**WINCHELSEA COMMUNITY HOUSE AND
 SHIRE HALL ARE HAVING A COMMUNITY
 EXPO ON FRIDAY 24TH FEBRUARY, 2023
 FROM 2PM-7PM.**

**ALL COMMUNITY GROUPS ARE WELCOME
 AND ENCOURAGED TO PARTAKE (NO COST).**

PLEASE EMAIL

**shirehall@winchhouse.org.au to book a
 place for your community group.**

2023 ACTIVITIES PROGRAM

STAY TUNED FOR WHAT IS COMING IN 2023.

Winchelsea Trading—agents for:

UNIVERSAL TOOL SHARPENING

For all your sharpening needs
Rural—Domestic— Industrial

- Hand tools
- TCT Blades
- Chainsaws
- Kitchen tools
- Garden tools
- Brobos
- Firewood saws
- Bandsaws
- Chipper & planer blades
- Drill and router bits
- Dog & horse clipping blades

5248 2061

'We give you the edge you need'



St Vincent de Paul Society
good works

Covering Meredith, Bannockburn,
Anakie, Lethbridge, Inverleigh,
Teesdale, Shelford,
Elaine and Winchelsea

52219170

Monday - Friday 9am to 2 pm
<http://www.vinnies.org.au>

A caring Catholic
organisation offering
“a hand up” to all people
in need.

**NO MATTER WHAT
YOUR PROBLEM, DODDS
ELECTRIX CAN DEFUSE
THE SITUATION.**

RURAL, INDUSTRIAL, COMMERCIAL. DOMESTIC
PHONE 0438 887 360
EMAIL: DODDSY@FASTMAIL.FM
PO BOX 36 BIRREGURRA, VICTORIA 324
REC: 17520 ABN: 64 581 250 880



5234 6585 0417 385 984
For all your domestic & stock water.
Also available for road and civil construction
Local owned and operated.

TRENCHES & HOLES PTY LTD.



PHILLIP ROBERTSON
☎ 0427 672 945
WINCHELSEA

- General Earth Works
- Driveways
- Trencher
- Kanga Loader
- Grader
- Excavator Work (3.5 & 6.5 Tonne)
- Tip Truck
- Rock Breaker
- Post Holes & Shed Footings

A.B.N 74006896898

WINCH WEBSITES
WEB SOLUTIONS SIMPLIFIED.

WEBSITES

**GROW business
INCREASE reach
SAVE time**



Find out what a website
could do for you
winchwebsites.com.au
04 887766 20

CONCRETER

Alister Aitken

No job to big or small

- Driveways - Carports - Crossovers – Footpaths -
- Sheds Slabs - Colored Concrete – Concrete
- sealing - Exposed Aggregate – & more -

Call or text for a no obligation free quote

Servicing our local Winchelsea & Surrounding
Areas

alaitken.aa@gmail.com or Alister - 0411 871 950

A.B.N 47 228 574 460

**Property Slashing
and Block Mowing**

FREE QUOTES

Competitive rates for property slashing and
mowing of your block. Servicing entire of Surfcoast
shire and surrounding shires.

Call Scott TODAY to
discuss your needs
and to book in.

0408 523 290

Located WINCHELSEA



IN & OUT LOGISTICS
A Reliable and Local business



Winchelsea Community Facebook pages

What's on in Winchelsea

**FLYERS, LOCAL EVENTS,
SMALL BUSINESS,
PROMOTING WINCHELSEA**

facebook.com/WhatsoninWinchelsea

Winchelsea FREE

FREE ONLY

facebook.com/groups/winchelseafree

Winchelsea Community Information AUSTRALIA

POSITIVE DISCUSSION

facebook.com/
groups/207538644446972

Winchelsea Classifieds 3241

FOR SALE ONLY

facebook.com/
groups/216942861684082

Winchelsea Lost and Found

LOST PETS

facebook.com/
groups/768187693217518

Winchelsea Op Shop

facebook.com/
HospitalAuxiliaryOpShopWinchelsea

Winchelsea Tea Rooms (Community Centre)

facebook.com/WinchelseaTeaRooms

Winchelsea Community House

facebook.com/
winchelseacommunityhouse

Winchelsea Coronavirus Community Support Group

facebook.com/
groups/2676957719207927/

The Green Winchelsea Residents

facebook.com/
groups/515322772623126

Growing Winchelsea Inc

facebook.com/growingwinch

Winchelsea Star

winchelseastar.org.au/step/subscribe/

Winchelsea Movie Club

facebook.com/winchelseamovies

Winchelsea Community Market

facebook.com/
winchelseacommunitymarket

Winchelsea Land and River Care Group

facebook.com/envirowinchelsea/

Upper Barwon Landcare Network

facebook.com/UpperBarwonLandcare

Winchelsea & District Historical Society Inc.

facebook.com/
Winchelseaanddistricthistoricalsociety/

Winchelsea Wildlife Shelter

www.winchelseawildlifeshelter.com/

SCARS - Surf Coast Animal Rescue Service

facebook.com/groups/415211698950674

Winchelsea Gardeners

facebook.com/
groups/779878518703025

Winchelsea & District Historical Society

facebook.com/
Winchelseaanddistricthistoricalsociety/

Winchelsea Repertory Society Inc

facebook.com/winchrep/

Winchelsea Globe Theatre

facebook.com/Winchelsea-Globe-
Theatre-164790897641678

Winchelsea Uniting Church

facebook.com/winchelseaunitingchurch

St Thomas' Anglican Church

facebook.com/StThomasWinchelsea

St John the Baptist Catholic Church

facebook.com/pages/Winchelsea-
Catholic-Church/101775670163180

Winchelsea Mainly Music

facebook.com/
groups/668500343953191/

Winchelsea Health Club

facebook.com/WinchelseaHealthClub

Winchelsea Playgroup 2019

facebook.com/
groups/551663435367031

Winchelsea Girl Guides

www.guidesvic.org.au/

Winchelsea/Modewarre Scouts

facebook.com/1stModewarreScouts

Winchelsea Fire Brigade

facebook.com/winchelseafirebrigade/

Winchelsea SES

facebook.com/groups/WinchSES

Country Women's Association - CWA Winchelsea Branch

facebook.com/pg/CWAWinchelsea/

Winchelsea Bowls Club

facebook.com/Winchelsea-Bowls-
Club-533783333344345/

Winchelsea Blues Cricket Club

facebook.com/groups/8999049476/

Winchelsea Blues FC

facebook.com/WinchelseaFNC/

Mel's Dance Studio

facebook.com/melsdancecentral

Winchelsea Golf Club

facebook.com/winchelseagc/
facebook.com/
groups/1324943804676697

Winchelsea Kyokushin Karate Club

facebook.com/winchelseakyokushin

WYLD Winchelsea Youth Leisure and Drop in

facebook.com/
groups/569737570027065/

Lions Club of Winchelsea

facebook.com/LionsWinchelsea

Winchelsea Probus

10am 1st Mon month at Sen Citz Hall

Council grants foster Shire's reputation as a creative hotspot

Submissions for the Surf Coast Shire Council Artist and Creatives Grants: DEVELOP, are set to open and aim to support creatives from all artistic disciplines to explore new directions, innovative ideas and bold concepts.

Surf Coast Shire Councillor Libby Stapleton said the 2023 funding placed more emphasis on supporting contemplative process and planning to advance artists' practice, while helping to push their careers to the next level.

"The Surf Coast Shire is considered Australia's fourth largest regional creative hotspot and we recognise that it's a significant economic driver for us," Cr Stapleton said. "We understand that thriving depends on the right conditions and the thing that often gets in the way of making great art is artists not having enough money - or time."

Seed funding of up to \$3,000 for individual artists and \$5,000 for collectives is available and First Nations artists and artists from diverse or marginalised groups such as LGBTQIA+ and CALD groups are strongly encouraged to apply.

A series of free, online and in-person grant workshops will be held in January to assist artists and creatives to apply.

"We now have a much better understanding of our creative economy and how to foster it," Cr Stapleton said. "Acclaimed Aireys Inlet novelist Gregory Day used a Council seed grant to work on his seventh novel.

"Winchelsea's Louise Hall used the opportunity to create a print making workshop studio for people in her community and beyond.

"In all of these cases, this funding has helped support the gestation period that helps bring the best creative ideas to life.

"Now is the time to start thinking about making a submission. We know there are some really fabulous, well-known artists living here in the shire, as well as equally talented, yet largely undiscovered artists here too.

"I encourage all artists to take the first step in this grant process. Be bold, be brave and make that submission in February. We can't wait to discover you."

Applications for the 2023 Artists and Creative Grants: DEVELOP will open on Wednesday 1 February and close at 5PM on Tuesday 28 February.

Successful recipients will be announced in late March.

For more information, including upcoming grant writing workshops and to apply, visit surfcoast.vic.gov.au/seedfund.

OZ TREES NURSERY & TREE PLANTING SERVICES

- Affordable seedlings—over 200 species
 - Complete plantation service—farm forestry, shelter, aesthetics
 - Deep ripping & mound ploughing. Rotary bed forming
 - Our experienced staff will help you select species for your site conditions and needs
- Also available—tree planting tools, milk cartons, plastic tree guards & bamboo stakes



569 Warrowie Rd. Colac
P: 5233 6280 F: 5233 6393
E: info@oztrees.com.au
W: www.oztrees.com.au
Open Monday—Friday
9am—4:30pm

Phone OzTrees for professional advice,

B & H Modifications Bob Verity

55 Stephenson Road
Winchelsea 3241
Ph: 5267 2467
Mobile: 0411 610 678



Industrial Sewing Machine Work

Caravan Annexes, Trailer Covers,
Shade Sails, Alterations and
Repairs to
Camping and Tents.
Clear PVC Blinds
Repairs to CLEAN Horse Rugs
No Job Too Small
Email: bobverity@southernphone.com.au

DownRyte Excavations

- Excavations
- Drilling and Piling
- Rock Placement
- Tree and Stump Removal

Sean Hunwick
Mobile: 0409 447 288
Email: downryte@activ8.net.au

direct
TEMPORARY
FENCING

FOR HIRE - SUPPLIED & ERECTED - 7 DAYS
GEELONG - BELLARINE - COLAC - SURF COAST
PHONE CAM 0417 310 800

AFS BOOKKEEPING

"Your local bookkeeper"

Bookkeeping
Administration
Payroll
BAS Services
Xero / Myob
Reckon / Quickbooks
Registered BAS Agent

Angelique Snetselaar
0456 077 485
info@afsbookkeeping.com.au
www.afsbookkeeping.com.au

Women's Workshop

Any ladies out there who are interested in learning some workshop and home maintenance skills?

The Winch Mens' Shed are running free workshops starting in August. Let us know what you would like to learn and what days and times are most suitable. We can tailor the workshop to cover what is most requested and on days that suit most.

If you are interested in attending please contact the Men's Shed on 0407839139 (Ray) or email winchmenshed@gmail.com

Barwon Water publishes Annual Water Outlook

Water storages are in good shape in the short term, according to Barwon Water's latest Annual Water Outlook, which details the security of the region's supply systems over the next two years.

Barwon Water Managing Director Tracey Slatter said that water storage levels were at nearly 100 per cent for the start of summer, the highest in more than 27 years.

It means the likelihood of restrictions in the Geelong, Golden Plains, Bellarine and Surf Coast supply system is rated as "very rare".

"West Barwon Reservoir, home to the region's main catchment located in the Otways, spilled again this year, while Lal Lal Reservoir, in the Moorabool catchment also spilled for the third year in a row." The Colac, Lorne and Apollo Bay water storages are all close to full.

Ms Slatter said that the storage levels and recent wet weather should be considered in the context of longer-term modelling which predicts an increasingly hotter and drier climate. Despite storages being in good shape coming into summer, it is important that everyone follows the state's permanent water saving rules, in place to ensure Victorians use water sustainably.

"We know that while storages are at healthy levels now, the situation can

change quickly. During the 2015-2016 El Niño and the hot dry start to 2019, we saw that water storages can draw down rapidly. While it has been generally wet over the past 24 months in our region, historically we have seen a 28 per cent drop in average inflows at West Barwon Reservoir since 1997."

Ms Slatter said that with climate becoming warmer and drier, in the future we will not be able to rely on rainfall and groundwater alone to secure supplies. "We will need to continue to be efficient with water, use recycled water and stormwater where it is fit for purpose and look to augment our water supply with climate independent sources.



Matthew Partridge
p 0418 672 334
e mrpsteelworx@yahoo.com.au

Welding Service

- Onsite welding
- Farm maintenance
- Farm machinery & equipment repairs
- Cattle & sheep yards
- Custom built trailers
- Supply & install gates

Simco Plumbing and Gasfitting

24/7 Emergency service Ph:0400643976

- All General Plumbing and Gasfitting
- Roof and Gutters, Hot Water service changeover
- Split Systems, Air Conditioning and Wood Heaters
- Irrigation, Septic and Treatment plants
- Excavation, Bobcat and Tipper
- Rain water Tank installation
- Renovations and Extensions
- Gas conversions and servicing

Simon McGillivray
Lic:109610. Free quotes, Fast and friendly service

Plasterer & Painter

Daryl Hecker

Domestic & Commercial
Renovations & Repairs
Suspended Ceilings
Dustless Sanding
New Homes
Extensions



Ph 0419 194 799

Antique Repairs

By **Doug Burns** est. 1976

- All Furniture
- French polishing
- Carving
- Veneering
- Wood Turning
- Porcelain



Unusual Requests Welcome

180 Barwon Terrace, Winchelsea

0428 672 704

**BUILDING?
RENOVATING?
NEW HOME?
EXTENSION?**

- ◆ **BUSHFIRE ASSESSMENTS**
- ◆ **6-STAR ENERGY RATINGS**

BRUCE ST. CLAIR
0435 892 799

CORPORATE MEMBER



Building Designers Association Victoria

COVID-19 Weekly Data

There were 24,652 COVID-19 cases reported in Victoria this week, a decrease of 11 per cent on the previous week. The average daily number of new cases this week was 3,522, down from 3,970 last week.

The seven-day rolling average of patients with COVID in Victorian hospitals is 675, a 1 per cent decrease when compared to the same time last week.

There are currently 638 COVID patients in Victorian hospitals, with 34 COVID patients in intensive care including 6 cleared cases. There are 5 COVID patients on a ventilator.

The seven-day rolling average of patients in intensive care in Victorian hospitals is 26.

In the past three months, 4,410 COVID patients were hospitalised in Victoria. 41.5 per cent of those patients had not received their third vaccine dose. 1,349 (30.6 per cent) were unvaccinated, 39 had received one dose, 440 had two doses, 955 had received three doses and 1,627 had received four doses.

Of Victorians aged 50 to 64 years, 79.9 per cent have had their third dose and 31.3 per cent have had their recommended fourth dose. Of those aged over 65, 90.8 per cent have had their third dose and 67.9 per cent have had their fourth dose. 70.3 per cent of people aged 16 and over in Victoria have had three doses of COVID vaccine.

A total of 84 COVID-related deaths were reported to the Department in the past week.

An average of 12 deaths were reported each day in the past week.

There has been a 67.1 per cent increase in the number of daily COVID-related deaths in the past month when compared to the previous month.

In the past three months, there have been 604 COVID-related deaths in Victoria. Of those deaths, 41.7 per cent were unvaccinated and 48.2 per cent had not received their third COVID vaccine dose.

The total number of reported COVID-related deaths in Victoria since the pandemic began is 6,223. The number of COVID-related deaths recorded in Victoria so far this year is 4,625.

COVID-19 epidemiological summary

The current COVID-19 wave appears to have plateaued, with several key measures – including active cases, cases in hospital and cases in intensive care – decreasing slightly for the first time in almost eight weeks.

However, multiple variants continue to circulate in Victoria and the transmission risks increase over the holiday period due to social gatherings and events. The tips below for staying safe this summer are particularly important during this holiday period.

Hospital admissions decreased slightly this week, however the number of healthcare workers unable to work due to COVID-19 has increased. On Friday, 1,660 healthcare workers were unable to work due to COVID-19.

Early testing and diagnosis are essential to access COVID medicines.

Some 60 per cent of patients aged over 70 years who presented to Victorian emergency departments with COVID-19 were undiagnosed at the time of presentation, according to a recent study by the Department of Health.

It is critically important that people with symptoms continue to test for COVID-19 and that people who test positive, and are eligible for antiviral treatments, get those treatments as soon as possible. Early action will lessen the impact on the community, the health system, and other services.

Tips for staying safe this summer

- Plan ahead this summer and consider the following tips to ensure you can enjoy the festivities safely.
- Plan your party or family gathering outside when possible
-

- Get tested if you have symptoms or you're going to a party or family gathering
- Keep homes well ventilated with windows and doors open
- Wear a high-quality mask, especially where you can't physically distance from others
- Isolate for at least five days and until you have no symptoms
- Check if you are eligible for COVID medicines
- Get your next vaccine dose.

Protecting yourself is the best way to protect yourself and the community. If you don't get COVID, you can't spread COVID.

For more information on ways to protect yourself and others, visit the Coronavirus website.

Links and contacts

- Report your rapid antigen test result
- Find your nearest vaccination provider through the Vaccine Clinic Finder
- Vaccination requirements for healthcare workers
- Checklists and advice for COVID cases and contacts
- Information on antivirals and other medicines to treat COVID-19

To access the most up-to-date information on COVID-19 in Victoria, visit the Coronavirus (COVID-19) Victoria website or call the Coronavirus Hotline on 1800 675 398.

Aboriginal and Torres Strait Islander peoples can also call the Victorian Aboriginal COVID Information Line on 1800 312 911. Callers will speak with Aboriginal staff who can answer questions about COVID-19 and direct them to relevant support services. The information line is open from 9am to 5pm, 7 days a week.



DEVELOP

Surf Coast Shire Council is committed to fostering an environment where people with clever and creative ideas can make a difference.

DEVELOP supports creatives to explore new directions, ideas and concepts to advance their practice and/or their careers.

It provides individual creative practitioners up to **\$3000** and creative collectives up to **\$5000** to undertake:

- Intensive creative research and development of new ideas/concepts
- Practice-based experimentation

KEY DATES

Getting That Grant Workshops - January 24 - 31

A free workshop for applicants to hone their application prior to submission – in various locations across the Shire, see the webpage below for details.

DEVELOP Applications Open:
Wednesday 1 February

DEVELOP Applications Close:
5pm Tuesday 28 February

Funds will be available approximately 6 weeks after the closing date.

surfcoast.vic.gov.au/ArtistCreativeGrants



St Vincent de Paul Society
good works

Covering Meredith, Bannockburn, Anakie, Lethbridge, Inverleigh, Teesdale, Shelford, Elaine and Winchelsea

52219170

Monday - Friday 9am to 2 pm
<http://www.vinnies.org.au>

A caring Catholic organisation offering “a hand up” to all people in need.



Big on products. Big on service.

And big on local banking

Find out more. Call us on 5267 3189 or search Bendigo Bank Winchelsea & District.



B Bendigo Bank

Community Bank
Winchelsea & District



Chiropractic - Remedial Massage - Myotherapy - Sound Healing - Breathwork



Chiropractic care for:

Stress & Anxiety	Pain Management
Body Aches & Tension	Family Wellbeing
Poor Sleep	Health Longevity

03 5267 2240 Shop 4/21 Hesse St Winchelsea   <https://onebodychiropractic.com.au/>




Winchelsea Medical Clinic

Located at 36 Main Street, Winchelsea 3241

For any enquires or bookings please contact the clinic on 5292 8028.
Or visit our website: www.winchmc.com.au

Opening Hours:
Monday - Friday 8:00am - 5.00pm
(Monday Evening Clinics available and selected Saturdays)




Our clinic accepts online bookings via the app called HotDoc. Download the app on the App Store or Google Play or head to our website.



Aquafire Healing
Transforming Your Health Through the Healing Power of Nature

**NATUROPATHIC MEDICINE • HERBAL MEDICINE
NUTRITIONAL MEDICINE • HOMOEOPATHY
REMEDIAL MASSAGE**

www.aquafirehealing.com
Ph: 0415 530 276



NATURAL GAS CONNECTIONS

M. & L DRAYTON PLUMBING SERVICES

YOUR LOCAL LICENSED

- PLUMBERS (24356)
- GAS FITTERS
- GAS CONVERTERS
- CARBON MONOXIDE TESTING

MARK 0428 520 142



Moriac Veterinary Clinic
0447 781 089
PHONE 24 HOURS
784 Hendy Main Road Moriac
info@moriacvet.com
www.moriacvetclinic.com.au
HOURS // Monday - Friday: 8am - 5pm



Lupton BUILDERS
SPECIALISING IN QUALITY




REGISTERED Building Practitioner

• NEW HOMES	• EXTENSIONS	• RENOVATIONS
• ALTERATIONS	• DECKS	• PERGOLAS
• GARPORTS	• VERANDAHS	• RE-GLADS
• BATHROOMS	• WINDOW REPLACEMENTS	

LEIGH LUPTON
0438 840 104

CHRIS LUPTON
0407 681 514

LEIGHLUPTON17@GMAIL.COM Est. 1977



TANGO
Pet Grooming

RONNIE.
Winchelsea's pet groomer.
For appointments
0436 008 989
tangopetgrooming@gmail.com



Preparing tomorrow's students today.

➔ www.journey.edu.au

JOURNEY
Early Learning



Water Supply Specialists

WATER SOLUTIONS

74 Dennis Street, Colac
5231 1861



ALL THINGS WATER:

- PUMPS - PIPES
- FITTINGS - TANKS
- POOL CHEMICALS
- IRRIGATION
- WATER PURIFICATION
- SOLAR - REPAIR



Breeze Health and Wellness, Exercise Physiology

32-34 Main Street, Winchelsea (old post office)

Chronic disease? Injured? Wanting improved athletic performance?

We can help you manage, rehabilitate and prevent many common ailments through movement.

Speak with your GP about a referral for a care plan.

Private health accepted - no referral needed.

Call Brenton on 0428 790 023 to discuss or email breezehealthandwellness@gmail.com

Exercise is Medicine, Motion is Lotion. Move with Ease at Breeze.



GREAT Bundle Deal on Bosch Hot Water... FROM ELGAS
 Buy any Bosch Bluetooth continuous flow hot water model - 16Litre, 20Litre or 26Litre and **Receive \$100* in Elgas bonus LPG gas credits**

*For more details: www.elgas.com.au/appliances/bosch-cptflow-16-20-26-lpg-bundle-sale

AND... for new customers, an additional \$80 WORTH OF LPG GAS CREDITS when you open a new LPG Gas account with Elgas**

**Further details can be viewed at www.elgas.com.au

Ask about the Elgas Easy Payment Plan - 12 months interest free*** on selected LPG appliances

***Further details can be viewed at: www.elgas.com.au/epp

Automatic tanker gas bottle refill **OR** gas bottle exchange refill is available for home or business....
 Call today or visit our website for our many customer benefits and latest offers

131 161
www.elgas.com.au

ELGAS

STS ACCOUNTING GROUP

Your Taxation & Superannuation Specialists.

Winchelsea
5267 2673
 www.surftax.com.au

STORAGE KING

SIMPLE STORAGE SOLUTIONS

- Personal & Business Storage
- Boat, Caravan & Vehicle Storage
- High Security Premises
- Individually Alarmed Units
- Electric Gate Access
- 7 Day Access & CCTV

YOUR STORAGE PROBLEMS SOLVED

5267 3116
 6 ALSOP DRIVE, WINCHELSEA 3241

Scott McDonald
 0423 413 829

S.J.R AUTOMOTIVE
ABN 942 483 846 33
 13 ALSOP DRIVE, WINCHELSEA VIC 3241

- Domestic and Commercial hire equipment
- Industrial welding gas
- Digging and Earthmoving equipment
- New trailers and trailer repairs
- Firewood
- Stockists of Royal Oil Lubricants products
- LPG for domestic and commercial requirements

Give Chris and the Team a call on **5232 1177** or email info@colachire.com.au

www.colachire.com.au
 101 Wallace St Colac 3250

COLAC HIRE

M & L DRAYTON
PLUMBING SERVICES

REG No 24356 C/A No C02594

- Domestic and Rural Plumbing
- Roofing
- Sewerage & Septic
- LPG & Natural Gas Connections
- Motorised Drain Cleaning
- Backhoe Hire

Phone Mark 5288 7244
PO BOX 98 WINCHELSEA 3241
Mobile 0428 520 142

Winchelsea Taxis is now Surfcoast Taxis

Our fleet of vehicles are growing to all late models and we are covering an extended area including Winchelsea, Colac, Bannockburn, Inverleigh, Great Ocean Road and Geelong.

We have a fleet of 10 seater Maxi Vans, all with capacity to carry wheelchairs.

Surfcoast Taxis Pty Ltd
All Bookings: 0408 325 992
Fax: 5267 2699
Email: bannotaxis@gmail.com
 (Admin or Stan 0429 672 888)
 66A Batson Street
 Winchelsea 3241

Book your next ride with smartHAIL

Book Track Pay Rate

Download on the App Store GET IT ON Google Play

Accounts NDIS provider. TAC, DVA etc

NDIS provider number 4050001044
 NDIS provider number 4050001048

Commercial | Industrial | Domestic

HAMILTONS
Truck & Bobcat Hire
Give Aaron a Call
0438 438 623

SOUTHERN GRAIN STORAGE PTY. LTD.

AG SUPPLIES FERTILISER GRAIN STORAGE SEED CLEANING

(03) 5267 2351




Volunteers Required

- Bus Driver & Outings Assistant
- Resident Visitor
- Events and Activities Assistant
- Group Wheelchair Walks Assistant
- Appointments Escort
- Social Support Activities
- Gardening - Winchelsea

Volunteers are essential to our aged care system, supporting the wellbeing of older people in their homes and in residential settings



For more information please contact Jessica Culhane, Communications and Community Partnership Officer via phone on [031 5267 1200](tel:03152671200) or via email jculhane@hesse.vic.gov.au

Funeral Planning

Working out what is best for you.
Prepaid Funerals, Funeral Bonds, Pay-by instalments...

There are many options and its important to make the right choice.

Alyson Burchell will be available by appointment to answer any questions about funerals and planning ahead.



For more information or to make an appointment contact Sue on 5221 4788

Tuckers Community Office,
Surf Coast Taxation Services, 22 Willis Street,
Winchelsea

**First Tuesday of the Month,
by appointment 10.00am - 12.00pm**

Caring for families since 1883



5221 4788
www.tuckers.com.au

HF RICHARDSON

PROPERTY

Residential | Rural Lifestyle | Agricultural Farms

Servicing all your real estate needs
Ken McDonald **0418 524 150**



Winchelsea Towing

24 Hour Accident and Breakdown Towing
0418 535 402



Wightons Lawyers

Dispute Resolution & Litigation
Debt Collection
Property Law
Wills & Estates
Powers of Attorney
Business Law
Family Law

By appointment only

22 Willis Street, Winchelsea
ph. 5221 8777

www.wightons.com.au



AVAILABLE FOR HIRE

Vermeer and 4in1 bucket
Augers
Forks
Smudger

For more information
phone 0409 433 687 or
visit our facebook page
MGT Carpentry

MGT CARPENTRY



R.A.K. DAVIS & SONS

CARTAGE CONTRACTORS

WINCHELSEA

SUPPLIER OF ALL QUARRY MATERIALS, TRUCK HIRE

CARTAGE OF GRAIN, LIME, GYPSUM & SUPER

LANDSCAPE & GARDEN SUPPLIES

56 WILLIS ST, WINCHELSEA

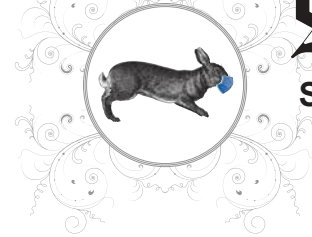
Ph – 5267 2094

Ryan – 0438 672 281

Email: rakdavis@bigpond.com

Winchelsea Star

Since 1977



ISSN 2202-6851



5234 6585 0417 385 984
For all your septic tank, grease traps and interceptor pits servicing.
Locally owned and operated

Green Lead Electrical

Connecting you to a greener future
REC 23618

0467 097 101



Servicing Geelong & the Surf Coast

Specialising in all residential electrical work including:

- Switch board & lighting upgrades
- Outdoor lighting
- Electrical safety checks
- Energy efficient LED lighting
- Ceiling sweep fans & ventilation
- Energy saving advice

Phone Martin Wilkinson:

0467 097 101

greenlead@outlook.com

132268-CG18-14

CHARLES STEWART

rma network Accredited Member

Charles Stewart & Company are leading livestock and real estate service providers covering Victoria's south west

	LIVESTOCK
Jamie McConachy	0418 522879
Peter McConachy	0408 522878
Matt Nelson	0428 315400
Gerard Bohan	0400 005541
Lachie Barclay	0438 346291
John Thornton	0408 526367
Dougal McIntyre	0439 575612
Ross Spitty	0419 539717

	REAL ESTATE
Michael Stewart	0418 520467
Daryl Osborne	0419 388341
Anthony McDonald	0418 593597
Gerard Bohan	0400 005541
Stephen Lugg	0417 556098
Josh Lamanna	0417 586032



Office
56 Bromfield Street, Colac
www.charlesstewart.com.au

Pixie Wash
Mobile Doggie Care
Dogs up to 20kg
Pixie Heath
0417 586 080

Winchelsea AUTO SERVICES
One stop auto shop
17 Alsop Drive

- ❑ LOG BOOK SERVICE
- ❑ AUTO ELECTRICAL
- ❑ TOWING
- ❑ AIR CONDITIONING
- ❑ CLUTCH & BRAKES
- ❑ TYRES
- ❑ WHEEL ALIGNMENT
- ❑ BATTERIES

CAR, TRUCK REPAIRS & Roadworthys
PH: 5267 3001
Mob: 0417 137 457