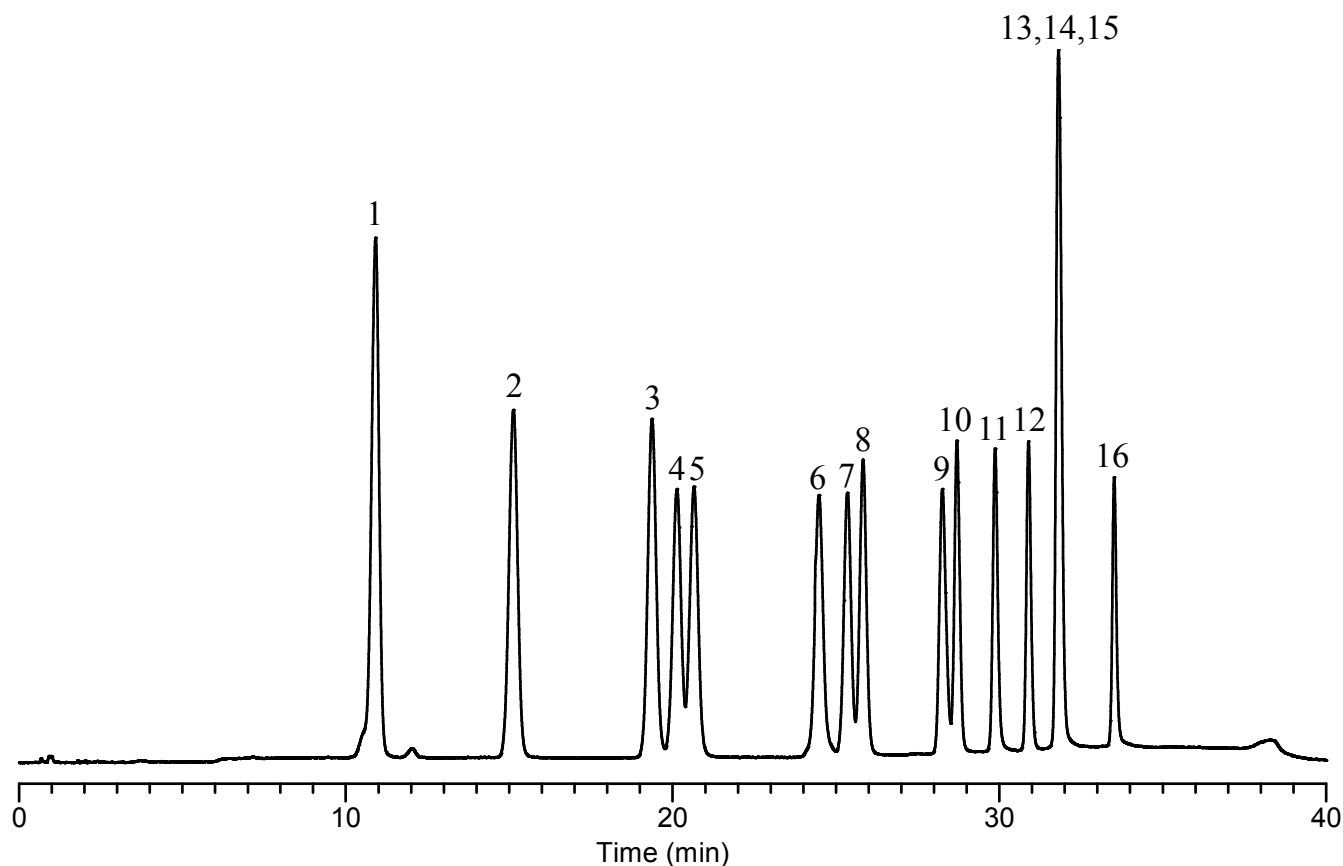


InertSearch™ for LC

Inertsil™ Applications

Analysis of 16 kinds of Aldehydes (Detected by Pre-Column Method with DNPH)

Data No. LB558-0848



Conditions

System : GL7700 HPLC system
Column : InertsinSustain PFP HP (3 μ m, 150 x 4.6 mm I.D.)
Column Cat. No. : 5020-87933
Eluent : A) CH₃OH/CH₃CN=9/1, v/v
 B) H₂O
 A/B = 40/60 – 20 min – 53/47
 – 10 min – 75/25 – 5 min – 75/25
 – 0.1 min – 40/60, v/v
Flow rate : 1.0 mL/min
Col. Temp. : 40 °C
Detection : UV 360 nm (UV7750 UV Detector)
Injection Vol. : 10 μ L
Sample : Standard

Analyte:

1. DNPH-Formaldehyde
 2. DNPH-Acetaldehyde
 3. DNPH-Acetone
 4. DNPH-Acrolein
 5. DNPH-Propionaldehyde
 6. DNPH-Crotonaldehyde
 7. DNPH-*n*-Butyraldehyde
 8. DNPH-Isobutyraldehyde
 9. DNPH-Isovaleraldehyde
 10. DNPH-*n*-Valeraldehyde
 11. DNPH-Benzaldehyde
 12. DNPH-Hexanal
 13. DNPH-*o*-Tolualdehyde
 14. DNPH-*m*-Tolualdehyde
 15. DNPH-*p*-Tolualdehyde
 16. DNPH-2,5-dimethylbenzaldehyde
- Conc. 250 μ g/L each