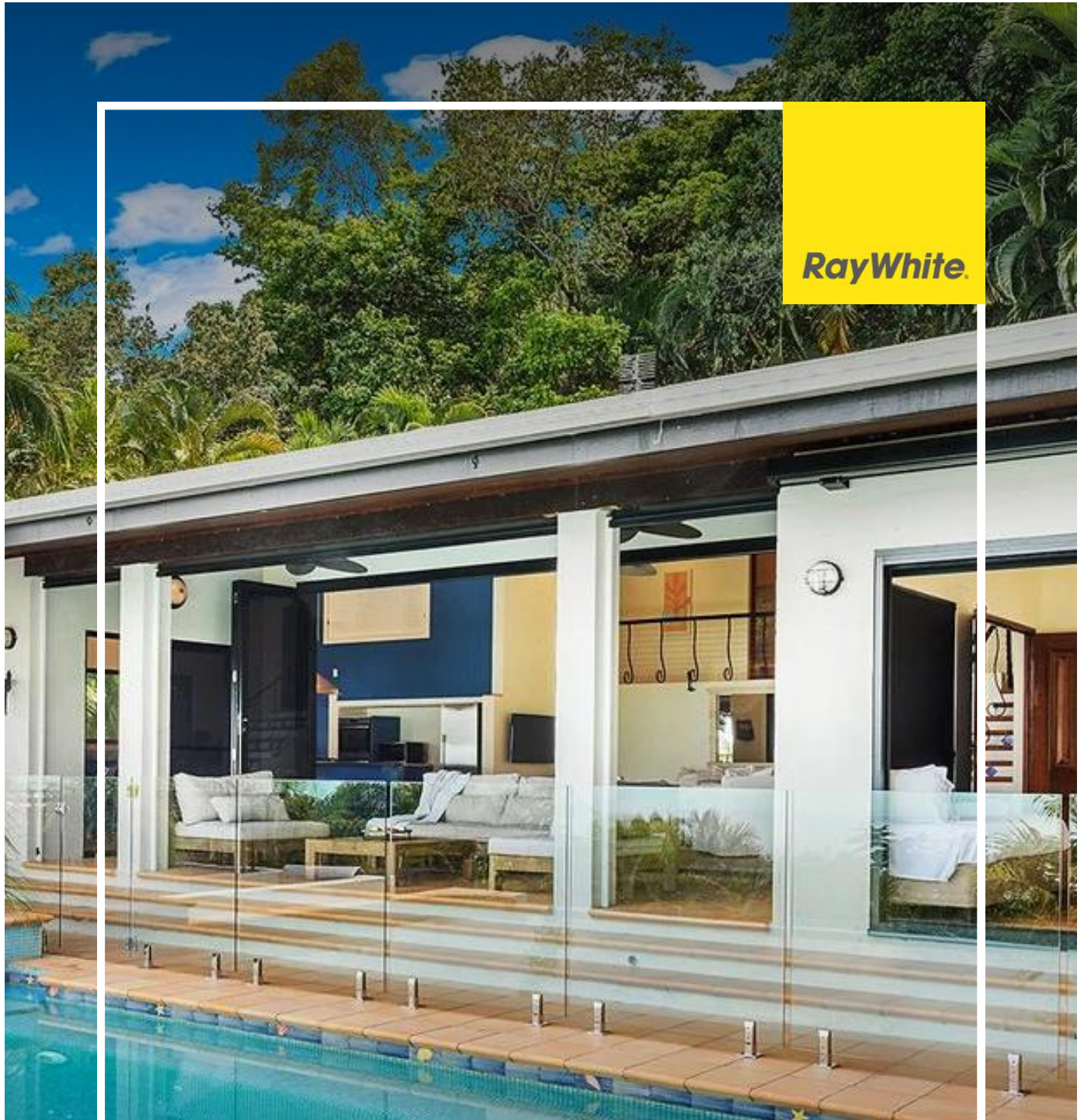


The RayWhite logo is a yellow square with the brand name in a bold, black, sans-serif font.

**RayWhite**



RAY WHITE WHITSUNDAY

# LUXURY HOMES

2023-2024 EDITION

[RAYWHITEWHITSUNDAY.COM.AU](http://RAYWHITEWHITSUNDAY.COM.AU)

Welcome to our Luxury Portfolio eBook of current and recently sold properties in the Whitsundays.

Our team is excited to represent a high percentage of these sales for our clients so we have presented to you a list of currently for sale properties and also sold properties for luxury houses and apartments.

In recent times the number of sales in the Whitsundays luxury market has dramatically increased, with more buyers than ever finding great value in the Whitsunday property prices.

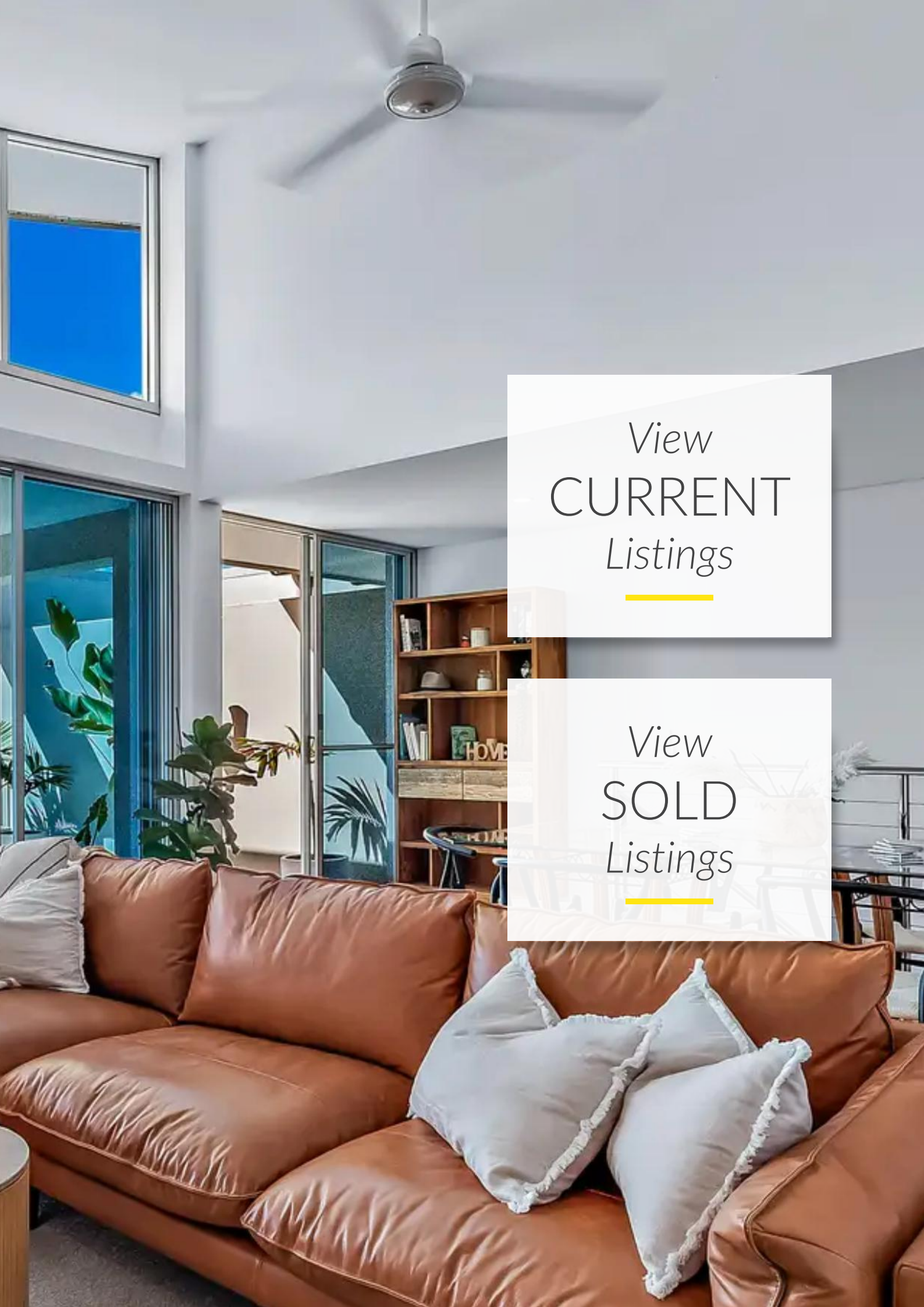
The suburb of Airlie Beach in particular sees the highest demand for luxurious properties and in some cases, these magnificent homes are holiday let bringing in wonderful incomes for the property owners. If you have interest in a holiday home please check out our website by [clicking here](#) and see why these homes are attracting interest from all over the globe.

We hope you enjoy our Luxury Portfolio as much as we enjoyed listing and selling and managing these beautiful properties. Please feel free to reach out to our sales team if you would like some more information.

Regards,



**Mark Beale**  
Principal  
Ray White Whitsunday  
0404 498 790  
[mark.beale@raywhite.com](mailto:mark.beale@raywhite.com)



View  
CURRENT  
*Listings*

---

View  
SOLD  
*Listings*

---



# Current Listings

---

Explore the epitome of luxury living in the heart of the Whitsundays. Immerse yourself in our curated collection of exclusive listings, where every home tells a unique story of elegance and sophistication. From breathtaking waterfront residences to secluded retreats, each property embodies the unparalleled lifestyle Ray White Whitsunday has to offer. Discover your dream home in paradise.







## 31/119 Botanica Drive, Woodwark



3 Beds



2 Baths



2 Cars

Don't miss out on this exclusive opportunity to own this desirable two-storey home perfectly positioned in one of the most sought-after and idyllic bayside locations "Botanica Estate".

Featuring three spacious bedrooms, each with breathtaking sea views and built-ins, the main bedroom boasts a luxurious walk-in robe and ensuite. The home includes two bathrooms, two powder rooms, a double-car garage and a solar-heated swim-out lap pool!

The property offers two living areas with reverse-cycle air conditioning, open-plan living with large windows showcasing the beautiful views and kitchen space with premium Smeg appliances. The dedicated office provides an ideal work-from-home setup, while the home gym makes staying fit easy. Unwind after a long day in the outdoor hammock and enjoy the beautifully lit gardens.

Additional conveniences include underground cellar storage with a Crimsafe door, gas and electric hot water system and security cameras.



**Stephanie McWhirter**

0467 677 225

[stephanie.mcwhirter@raywhite.com](mailto:stephanie.mcwhirter@raywhite.com)









## 305 Mandalay Road, *Mandalay*



5 Beds



3 Baths



7 Cars

Experience unparalleled luxury in this stunning iconic Whitsunday property. Positioned on a sprawling 2392m<sup>2</sup> allotment with 90 metres of absolute water frontage, this home offers breathtaking panoramic views from Airlie Beach to the islands and is set in one of the most desirable positions available in the Whitsundays.

Nestled in the prestigious Mandalay, renowned for its exquisite homes, this property is just a 6-minute drive from the vibrant heart of Airlie Beach. Designed for seamless indoor-outdoor living, this quality home was built by a local master builder for himself and his family. The home features an open-plan layout with expansive decks capturing sunlight, sea breezes, and ocean views. High ceilings and exquisite hardwood floors create a bright and inviting atmosphere in the living areas.



**Stephanie McWhirter**

0467 677 225

[stephanie.mcwhirter@raywhite.com](mailto:stephanie.mcwhirter@raywhite.com)



**Mark Beale**

0404 498 790

[mark.beale@raywhite.com](mailto:mark.beale@raywhite.com)

***Under Contract***



## 811 Gregory Cannon Valley Road, *Strathdickie*



4 Beds



2 Baths



8 Cars

There's something special about the classic Queenslander that strikes a chord with home buyers, and this property truly oozes the 'Wow Factor'.

The stunning residence has been impeccably transformed and updated over the years to cater to expansive family living and entertaining.

Chances are if you live locally, you have driven past this home many times but never actually seen this house due to its extremely private position set well back from the road. Once you are within this private 5.8-acre rural retreat, you will feel like you are miles away from town, however Cannonvale and Proserpine are only a short 10-minute drive from the property.

As you enter the driveway and make your way up to the house, you are presented with beautiful landscaped gardens and a natural creek that runs underneath the driveway.



**Adam Webster**

0401 235 534

[adam.webster@raywhite.com](mailto:adam.webster@raywhite.com)



## 34 Acacia Grove, *Woodwark*



4 Beds



2 Baths



4 Cars

Set against flat, open land, this modern residence offers an easy-care layout perfect for comfort without hassle. Bask in the natural light that fills every corner, with downlights ensuring radiance even when the sun sets.

This home features four bedrooms with plush carpet floors and mirrored wardrobes, plus a dedicated office space offering a quiet place to focus. The main bedroom has an ensuite with a double vanity and a large showerhead.

You'll love the open-concept living and dining area seamlessly connected to a well-appointed kitchen. The large concreted back patio opens from all back rooms, leading to a backyard with a fire pit, perfect for gatherings.

A separate rumpus room invites relaxation and entertainment. Perched on a 5,626-acre block, the property boasts three 27,000L tanks, a Taylex system, a drilled bore with power, plus a 12 x 9 shed and large garage to accommodate hobbies, storage or a boat/caravan.



**Stephanie McWhirter**

0467 677 225

[stephanie.mcwhirter@raywhite.com](mailto:stephanie.mcwhirter@raywhite.com)

**Under Contract**



## 97 Gillies Road, Strathdickie



4 Beds



3 Baths



2 Cars

Dive into the unique character of an industrial-style property with an impressive design and captivating features, unlike anything you've seen before! This custom-designed builder's home was meticulously crafted with no expense spared on the finer details.

Situated on an impressive 2.54-acre lot, this expansive property provides ample room to spread out, relax, and play - all while being just a short drive from town. The spacious floor plan boasts four bedrooms and two bathrooms, complemented by an extra wide two car garage.

You will be welcomed by industrial-styled burnished concrete polished floors flowing gracefully throughout the home along with 2.7-metre ceilings and extra-height internal doors that enhance the sense of space and grandeur.



**Stephanie McWhirter**

0467 677 225

[stephanie.mcwhirter@raywhite.com](mailto:stephanie.mcwhirter@raywhite.com)



## 32/119 Botanica Drive, Woodward



6 Beds



5 Baths



6 Cars

Experience unparalleled luxury in this breathtaking 6-bedroom, 5-bathroom executive residence with panoramic ocean and island views that will leave you speechless.

Nestled on a sprawling 1,955 sqm allotment within the most exclusive gated community in the Whitsunday Region, this magnificent home offers a dress circle location with close proximity to Airlie Beach and the Whitsunday Islands. Every window frames the azure Coral Sea, providing a stunning backdrop to your everyday life.

Designed with superb architectural planning and solid construction, this spacious home is fully equipped with quality German appliances and beautiful designer fittings. The six large, luxurious bedrooms are complemented by five contemporary bathrooms, including a master suite featuring a corner spa, ocean views, and direct balcony access.

The massive open-plan living areas flow seamlessly to the outdoor entertaining area, where you'll find a wet edge pool and extensive decks perfect for enjoying the mesmerizing views of the shimmering water and distant horizon.



**Stephanie McWhirter**

0467 677 225

[stephanie.mcwhirter@raywhite.com](mailto:stephanie.mcwhirter@raywhite.com)



## 10 Mosswood Court, *Cannon Valley*



5 Beds



3 Baths



5 Cars

Situated on a sprawling 1064 sqm allotment with a 26.6m street frontage, this stunning 5 bedroom, 3 bathroom residence offers the perfect blend of modern luxury and practical design, ideal for a growing or multigenerational family. The open-plan layout seamlessly integrates multiple living areas, a contemporary kitchen, and expansive outdoor spaces, all designed for both comfort and style.

Inside, you'll find spacious, carpeted bedrooms and tiled living areas, providing a harmonious balance of elegance and functionality. The home boasts an integrated kitchen and living area that flows effortlessly into a large outdoor space, perfect for entertaining or future expansion, including room for a pool.

A unique feature of this property is the dual living option, accessible via lockable sliding doors from the main kitchen. This self-contained wing includes its own entrance, parking, one bedroom, one bathroom, a sizeable kitchen and dining area, and a large undercover alfresco space—ideal for extended family or guest accommodation.



**Stephanie McWhirter**

0467 677 225

[stephanie.mcwhirter@raywhite.com](mailto:stephanie.mcwhirter@raywhite.com)



*Under Contract*



## 36 Beth Court, Cannonvale



4 Beds



3 Baths



2 Cars



Nestled in the tranquil precinct of Cannonvale, 36 Beth Court stands as a modern haven for discerning families seeking comfort and elegance. Spanning a generous 1247 square metres, this immaculate property boasts four plush bedrooms and a study complemented by three well-appointed bathrooms, ensuring ample space for family living.

The heart of this residence reveals a sleek SMEG-fitted kitchen with a walk-in pantry, leading to a spacious dining area that invites memorable family gatherings. Two versatile living areas, including a rumpus and an upstairs lounge, offer serene retreats for relaxation or entertainment.

Luxury extends outdoors with an infinity pool featuring an inbuilt spa, mineral/copper treatment for skin-friendly swimming, and innovative smart systems for effortless maintenance. The addition of a swim-up bar and a shade sail makes this the perfect backdrop for al fresco enjoyment.



**Stephanie McWhirter**

0467 677 225

[stephanie.mcwhirter@raywhite.com](mailto:stephanie.mcwhirter@raywhite.com)



## 19/11 Altmann Avenue, *Cannonvale*



3 Beds



2 Baths



2 Cars



The quintessential North Queensland lifestyle awaits in this spectacular resort apartment with breathtaking ocean views. At home, you can host guests in absolute style and relish the resort amenities or venture along the boardwalk just a few steps from your door that leads to Airlie main street. Just 100 metres to the nearby boat ramp where you can launch your pride and joy and explore this iconic region from the water; it truly doesn't get any better than this.

The layout is spacious, light-filled and fully furnished with three good-sized bedrooms and two bathrooms. Your luxe master suite boasts water views, patio access and an opulent ensuite with a renovated shower.

A wall of glass sliding doors retracts to create a seamless flow from the open-plan living space to the covered entertainer's patio. Here, you can host guests and admire the glorious sunset views or bask in the sunshine after a dip in your private heated inground plunge pool with a robotic pool cleaner and an insulated pool cover. There's even a renovated poolside deck where you can put your feet up and indulge in a good book.



**Stephanie McWhirter**  
0467 677 225  
[stephanie.mcwhirter@raywhite.com](mailto:stephanie.mcwhirter@raywhite.com)



*Under Contract*

## 16/144 Shingley Drive, *Airlie Beach*



3 Beds



2 Baths



2 Cars

Nestled within the gated and prestigious Peninsula Apartment complex is this bright and beautiful abode offering the life of leisure you deserve.

You'll live on the second level for added comfort and enhanced water views while easy access to the resort-style pool will appeal to those wanting to live that permanent holiday lifestyle.

The two-bedroom layout is expansive and grand with a soaring double-height ceiling and high-line windows for a dramatic feel. Discover a modern kitchen, an open-plan living space and a large balcony where you can best enjoy that sensational outlook over the Coral Sea Marina. There is a separate media room with bi-fold doors and the owner's suite is set on the mezzanine along with a walk-through robe and a private ensuite.



**Stephanie McWhirter**  
0467 677 225  
[stephanie.mcwhirter@raywhite.com](mailto:stephanie.mcwhirter@raywhite.com)



***Under Contract***



## **25/144 Shingley Drive, *Airlie Beach***



3 Beds



2 Baths



2 Cars

This stunning, fully furnished apartment located within the gated Peninsula complex is sure to impress. This bright and beautiful abode offers the life of leisure you deserve. Located on the ground level, this prestigious 216 sqm floor plan residence offers panoramic views of the Coral Sea Marina and Double Cone Islands, creating a daily masterpiece of natural wonders.

With ducted air conditioning ensuring year-round comfort, this waterfront haven boasts a master bedroom with a walk-through robe to the ensuite, two additional bedrooms with built-ins, a study nook, 2 baths.

Entertain on the east facing covered balcony or in the gourmet kitchen with quality appliances and a large island bench with a breakfast bar.



**Stephanie McWhirter**

0467 677 225

[stephanie.mcwhirter@raywhite.com](mailto:stephanie.mcwhirter@raywhite.com)





## 84/11 Altmann Avenue, *Cannonvale*



3 Beds



2 Baths

This spectacular apartment is set within one of the Whitsundays' most prestigious complexes -Whisper Bay Resort/Mirage. The apartment is light-filled, spacious and immaculate, this could be the luxurious permanent home or enviable holiday let you've been searching for. The apartment has stunning ocean views.

Architecturally designed to embrace the incredible outlook, the layout is open-plan and flows out through full opening of stacker doors to the covered ocean facing entertainer's tiled outdoor area.

The floor-plan is centred around a dining and living room and the gourmet kitchen complete with stone bench tops.

There are three bedrooms and two bathrooms in addition to a separate study area for added convenience. Undercover parking space included. Ocean views from the main bedroom, lounge, dining and kitchen!



**Anita Edgar**  
0418 732 968  
[anita.edgar@raywhite.com](mailto:anita.edgar@raywhite.com)



## 101/33 Port Drive, *Airlie Beach*



3 Beds



2 Baths



2 Cars



Indulge in luxury living in this spacious 3 bedroom, 2 bathroom residence offering a sprawling 170sqm floorplan. Located at the end of the block on the first floor of a sought-after complex, the home is fully furnished and currently part of a holiday let program which offers excellent returns.

Inside, you'll discover a beautifully designed home with swipe card access, ducted air conditioning, plenty of light, timber floors, and a seamless flow-through dining, kitchen, and living area, complemented by bi-fold glass doors leading to the balcony. The kitchen boasts quality appliances, an island bench for food prep and a breakfast bar. Your master bedroom boasts an opulent ensuite and walk-in robes, and each bedroom features its own private balcony.

You'll have access to a wealth of amenities within the complex, and you are close to the ferry terminal, the beach, shops, dining, and transport.

Whether you are holidaying, renting out, or moving in, this exclusive Airlie Beach residence has it all!



**Stephanie McWhirter**

0467 677 225

[stephanie.mcwhirter@raywhite.com](mailto:stephanie.mcwhirter@raywhite.com)



## 27 Warrain Street, *Shute Harbour*



3 Beds



2 Baths



4 Cars

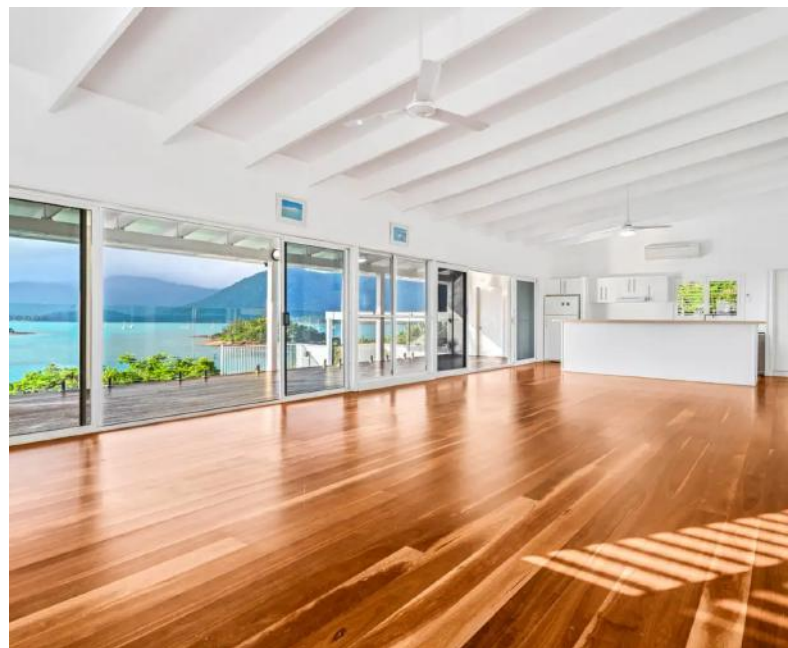
Introducing this coastal haven at 27 Warrain Street, Shute Harbour - a slice of paradise perfectly situated at the tip of the Whitsunday Coast mainland peninsula. Just a short 10-minute drive from the lively Airlie Beach, this enchanting residence is embraced by serene turquoise waters within the Great Barrier Reef Marine Park. Surrounded by the 74 islands of the Whitsundays and bordered by the Conway Range National Park, this location is truly extraordinary.

Elevated above the waves, this substantial property offers breathtaking panoramic views of 12 islands, Shute Bay, and Conway peninsulas. Nature's symphony beckons, with vibrant birds, majestic Humpback Whales (July-October), and marine life such as turtles and rays below.

Enjoy a unique connection to a coastal reserve strip, allowing for kayaking adventures to secluded shores. Architecturally designed to maximize views and natural light, the residence features captivating ocean views, multiple living zones, and an open-plan kitchen and living area.



**Fiona Donnellan**  
0432 647 708  
[fiona.donnellan@raywhite.com](mailto:fiona.donnellan@raywhite.com)





## 5 Whitehaven Crescent, *Cannonvale*



4 Beds



2 Baths



3 Cars

Welcome to your dream home, offering breathtaking sea views, a stunning inground heated swimming pool, and an enviable address! Nestled high on the hill in the peaceful cul-de-sac of Whitehaven Crescent, this property captures cool summer breezes and exudes coastal elegance.

Key Features:

- **Panoramic Sea Views:** Enjoy spectacular ocean vistas from multiple vantage points.
- **Spacious Living Areas:** Two expansive living areas and a massive media room or pool room provide ample space for relaxation and entertainment.
- **Entertainment Balcony:** A huge undercover balcony wraps around half of the house, perfect for unwinding while soaking in the Whitsunday sea views.
- **Designer Kitchen:** The large kitchen boasts granite countertops, abundant storage, and is ideal for culinary enthusiasts.
- **Luxurious Bedrooms:** Three generously sized bedrooms, including a master suite with an enormous walk-in robe, ensuite, and balcony access. The other two bedrooms feature built-in robes and share the second bathroom.



**Fiona Donnellan**

0432 647 708

[fiona.donnellan@raywhite.com](mailto:fiona.donnellan@raywhite.com)



## 33 Blackcurrant Drive, *Hideaway Bay*



3 Beds



2 Baths



4 Cars

Step into luxury at this architecturally designed and award-winning residence, boasting unparalleled ocean views of the renowned Whitsunday Islands from the moment you enter. With a sophisticated palette of fresh neutral tones and a seamless indoor/outdoor design, relish the elevated vantage point that captures year-round fresh breezes and provides a stunning backdrop for entertaining friends and family.

This double-story, 3-bedroom, 2-bathroom home showcases expertly landscaped tropical and native gardens, ensuring easy care and low maintenance living. The quality craftsmanship, courtesy of multi-award-winning ABD Designs and construction by River City Homes, is evident throughout the property, earning it multiple design and building accolades.

Don't miss this rare opportunity to own this piece of paradise in an unbeatable location.



**Fiona Donnellan**  
0432 647 708  
[fiona.donnellan@raywhite.com](mailto:fiona.donnellan@raywhite.com)





## 14/119 Botanica Drive, Woodwark



4 Beds



3 Baths



4 Cars

Welcome to the magnificent 14/119 Botanica Drive, an exquisite residence nestled in the serene location of Woodwark, QLD. Designed by the renowned Piccinelli, this property is a testament to luxury living, tailored to embrace the idyllic tropical climate. Boasting an impressive selection of 3 to 4 bedrooms, depending on your desired configuration, and 3 well-appointed bathrooms, this house is a perfect sanctuary for families and a wise investment opportunity.

Spread across three levels, each vantage point within the home affords breathtaking views, from the shimmering ocean panoramas at the forefront to the rugged natural rock formations and verdant established gardens that envelop the property. Enter this home with the bi-fold doors of the lower level, or mid-level where the main bedroom, office space, pool and outdoor kitchen with expansive entertainment area are located, or the top floor which presents an adaptable self-contained retreat space, complete with awe-inspiring outlooks over Pioneer Bay and its very own sauna. Envision it as a lucrative Airbnb, an additional bedroom, or a secluded office for your home business endeavours.



**Stephanie McWhirter**

0467 677 225

[stephanie.mcwhirter@raywhite.com](mailto:stephanie.mcwhirter@raywhite.com)







## 20/6 Banksia Court, *Hamilton Island*



2 Beds



2 Baths

This property is the perfect option for those looking for a home away from home or an easy, hassle-free investment. With lush gardens and a tranquil lagoon swimming pools make this a stand-out location for holiday guests and owners to relax and unwind while on Hamilton Island.

The Anchorage development has always been regarded as a stylish quality built property ahead of its time back in 2004 and it still looks modern with a touch of class.

The open floorplan allows for a spacious dining, kitchen and living area with tiled floors, modern kitchen with granite bench tops and two pack cabinetry. The living area flows outside to a generous sized balcony that overlooks Dent Island, as well as gorgeous ocean views.

The master bedroom has a large ensuite that is better than most luxury hotels, with its own spa bath. The second bedroom is at the rear with its own bathroom and separate toilet.



**Anita Edgar**  
0418 732 968  
[anita.edgar@raywhite.com](mailto:anita.edgar@raywhite.com)



## 40 Airlie Crescent, *Airlie Beach*



4 Beds



2 Baths



3 Cars

Located directly above the main street of Airlie Beach and the Heart of the Reef lookout, you can enjoy one of the best positions in Airlie Beach here in your own comfort and privacy. This beautiful and recently renovated home is only a minutes walk from everything Airlie Beach has to offer; and also straight above the Airlie Beach lagoon with playground and BBQ areas directly at your doorstep.

The home is set over two levels, with an open plan upstairs area containing a roomy kitchen, dining and living area all making the most of the brilliant views. The master bedroom is at the rear of this top level with ensuite and walk in robe, with balcony areas at the front and rear of the property.

Downstairs there are three bedrooms, the front room with its own sitting area - all rooms able to be locked off separately, along with a bathroom servicing the downstairs area and direct access to the undercover parking area. Currently operating as a very popular holiday accommodation the property could continue to make the lucky buyer a good income - or living here you will be pinching yourself every day!



**Simon Dymmott**  
0400 799 788

[simon.dymmott@raywhite.com](mailto:simon.dymmott@raywhite.com)



## 3/1 Airport Drive, *Hamilton Island*



4 Beds



3 Baths

Hamilton Island's only Marina side apartments; the complete luxury lifestyle suite. This spectacular first floor, single level residence is one of the most sought-after and exclusive luxury apartments on the Island.

A modern and stylish interior, the home features a sleek sophisticated kitchen, spacious open-plan living and dining area. Enjoy a luxurious yet comfortable entertaining areas, both indoors and outdoors. The views are breathtaking from this villa & is further enhanced by an expansive wrap-around entertainer's balcony that boasts the most spectacular views of the marina, Dent Island and beyond.

The Villa offers ease of access and parking at the back door. The property is conveniently located within a short walk to Front Street shopping, restaurants, supermarket and the marina precinct, short buggy ride to the beach and main resort.



**Anita Edgar**  
0418 732 968  
[anita.edgar@raywhite.com](mailto:anita.edgar@raywhite.com)



## 19 Olden Court, *Hideaway Bay*



4 Beds



2 Baths



2 Cars

Indulge in beachside living at its best with this beautiful beach house, embodying all the essentials for a serene coastal lifestyle.

Nestled on a spacious 1192m2 flat block at the end of a peaceful cul-de-sac, this charming double-storey residence boasts four bedrooms, including a large ensuite accompanying the main bedroom, which opens onto its own private balcony. Light-filled and airy, the open plan living, dining, and kitchen area seamlessly extends to an outdoor entertaining space, perfect for soaking up the sun and sea breeze.

With mountain views at the rear and tranquil ocean vistas at the front, this well-positioned home offers a serene ambiance complemented by its construction, along with timber look vinyl flooring.

Designed for family gatherings and entertaining, the lower level features a main bathroom, dining area, and a living space that flows effortlessly to an outdoor entertainment zone. The spacious kitchen with granite benchtops and ample cupboard space is a delight for culinary enthusiasts.



**Fiona Donnellan**  
0432 647 708  
[fiona.donnellan@raywhite.com](mailto:fiona.donnellan@raywhite.com)





## 52 Blackcurrant Drive, *Hideaway Bay*



3 Beds



2 Baths



4 Cars

Indulge in the ultimate entertainment experience within your own retreat at 52 Blackcurrant Drive, Hideaway Bay. Revel in the joy of hosting gatherings on the outdoor decking area, boasting awe-inspiring ocean views that extend over the 10-meter saltwater swimming pool, creating an idyllic setting for every occasion.

Nestled in a tranquil and coveted pocket of Hideaway Bay, this residence boasts convenience with a short stroll to the beach or a quick drive to the esteemed Eco Cape Gloucester Resort and Montes Resort. Embrace the unique lifestyle that Hideaway Bay offers, where every sunset is a spectacle and whale sightings in the bay are not uncommon.

With a spacious layout, this family home exudes warmth and brightness, complemented by a timber staircase leading to the upper level which consists of 2 ocean view bedrooms and living area and the lower level has white ceramic tiles throughout.



**Fiona Donnellan**  
0432 647 708  
[fiona.donnellan@raywhite.com](mailto:fiona.donnellan@raywhite.com)



An aerial photograph of a small, light-colored motorboat moving across clear, turquoise water. The boat is positioned in the lower-middle section of the frame, leaving a white wake. The water is surrounded by a vibrant coral reef with various shades of brown, tan, and light blue. The overall scene is bright and clear, suggesting a tropical or coastal environment.

# Sold Listings

---

Journey through our success stories! Dive into the pages of our ebook showcasing recently sold luxury homes in the Whitsundays. Each property is a testament to the exceptional service and expertise of Ray White Whitsunday. Explore the remarkable transformations and success stories that have shaped the real estate landscape in this paradise. Your dream home may just be the next chapter!





Stephanie McWhirter

**332 Mandalay Road,  
Mandalay**



Stephanie McWhirter

**111/33 Port Drive,  
Airlie Beach**



Anita Edgar

**41/11 Altmann Avenue,  
Cannonvale**



Anita Edgar

**55 Eshelby Drive,  
Cannonvale**





Adam Webster

**7 Beach Road,  
Cannonvale**



Andrea Clarke

**2/20 Broadwater Avenue,  
Airlie Beach**



Anita Edgar

**13 De Boni Road,  
Gregory River**



Adam Webster

**35 Beames Crescent,  
Cannon Valley**



13 Macona Crescent,  
Cannonvale



2 Blackcurrent Drive,  
Hideaway Bay



187 Camille Drive,  
Strathdickie



37 Slater Road,  
Conway



1/4 Great Northern Highway,  
Hamilton Island



32/144 Shingley Drive,  
Airlie Beach



17/119 Botanica Drive,  
Woodwark



22 Stonehaven Court,  
Airlie Beach



28 Macona Crescent,  
Cannonvale



18 Macona Crescent,  
Cannonvale



217/33 Port Drive, Airlie Beach



Adam Webster

127 Staniland Drive,  
Strathdickie



Anita Edgar

3/1 Coral Sea Avenue,  
Hamilton Island



Lynne Erricker

15 Airlie Crescent,  
Airlie Beach



Stephanie McWhirter

17/119 Botanica Drive,  
Woodwark



Stephanie McWhirter

2/18 Stonehaven Court,  
Airlie Beach



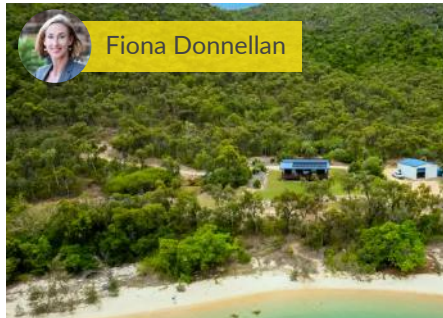
Adam Webster

14 Acacia Grove,  
Woodwark



Stephanie McWhirter

122 Orchid Road,  
Cannon Valley



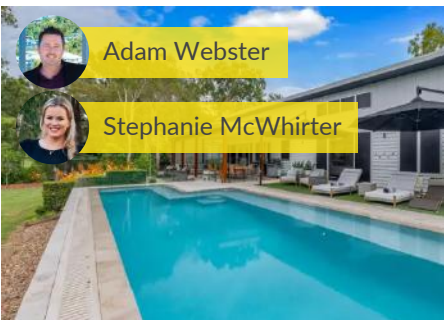
Fiona Donnellan

Lot 65 Gloucester Avenue,  
Cape Gloucester



Andrea Clarke

61 Galbraith Park Drive,  
Cannonvale



Adam Webster



Stephanie McWhirter

54 Botanica Drive,  
Woodwark



Adam Webster

58 Pringle Road,  
Woodwark



Stephanie McWhirter

9 Mosswood Court,  
Cannon Valley



Adam Webster

144 Camille Drive,  
Strathdickie



Anita Edgar

36 Beth Court,  
Cannonvale



Fiona Donnellan

16 Olden Court,  
Hideaway Bay



Stephanie McWhirter

2 Bottletree Close,  
Airlie Beach



Stephanie McWhirter

201/33 Port Drive,  
Airlie Beach



Lynne Erricker

4 Kara Crescent,  
Airlie Beach



Andrea Clarke

13/144 Shingley Drive,  
Airlie Beach



Mark Beale

10 The Cove,  
Airlie Beach



Stephanie McWhirter

36 Macarthur Drive,  
Cannonvale



Stephanie McWhirter

2 Armada Crescent,  
Jubilee Pocket



Fiona Donnellan

37 Airlie Crescent,  
Airlie Beach



Anita Edgar

41/11 Altmann Avenue,  
Cannonvale



Adam Webster

17/144 Shingley Drive,  
Airlie Beach



Stephanie McWhirter

28/144 Shingley Drive,  
Airlie Beach



Fiona Donnellan

24 Whitehaven Crescent,  
Cannonvale



Lynne Erricker

110 Gloucester Avenue,  
Hideaway Bay



Stephanie McWhirter

47 Pepperberry Lane,  
Cannon Valley



Stephanie McWhirter

10 Ripplecreek Way,  
Cannon Valley



Lynne Erricker

4 Simmons Street,  
Airlie Beach



Stephanie McWhirter

21-23 Acacia Grove,  
Woodwark



Stephanie McWhirter

64 Stanley Drive,  
Cannon Valley



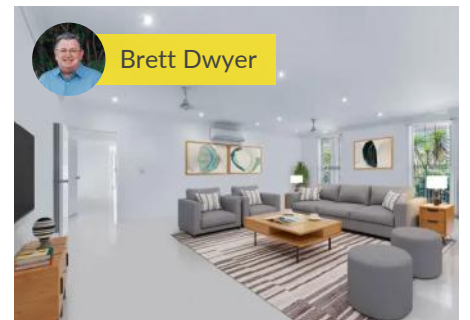
Stephanie McWhirter

211/33 Port Drive,  
Airlie Beach



Stephanie McWhirter

23 Stonehaven Court,  
Airlie Beach



Brett Dwyer

9 Beames Crescent,  
Cannon Valley



Lynne Erricker

22 Broadwater Avenue,  
Airlie Beach



Adam Webster

48 Beames Crescent,  
Cannon Valley



Stephanie McWhirter

34 Island Drive,  
Cannonvale



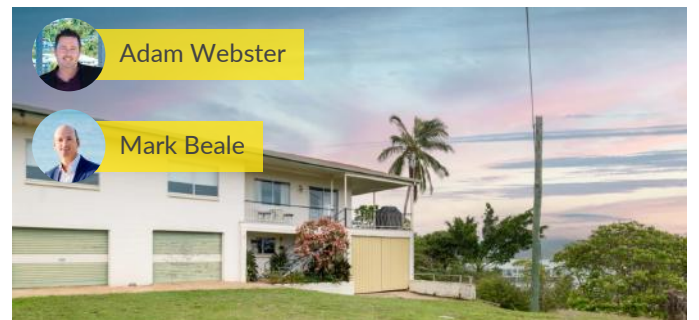
Stephanie McWhirter

38 Stanley Drive,  
Cannon Valley



Stephanie McWhirter

13 Cumberland Court,  
Airlie Beach



Adam Webster



Mark Beale

2 Begley Street,  
Airlie Beach



# Ray White Marine Sunreef Yachts

Ultra-eco-friendly catamarans may soon be cruising the waters of Australia after one of the country's biggest yacht brokerages, Ray White Marine, agreed to distribute Polish-made Sunreef Yachts in the sunburnt country.

Ray White Marine Sales Director Brock Rodwell said he was very excited by the appointment, citing Sunreef Yachts' industry-leading technology and aesthetic appeal.



**Leo Rodriguez**

0415 776 633

leo@raywhitemarine.com

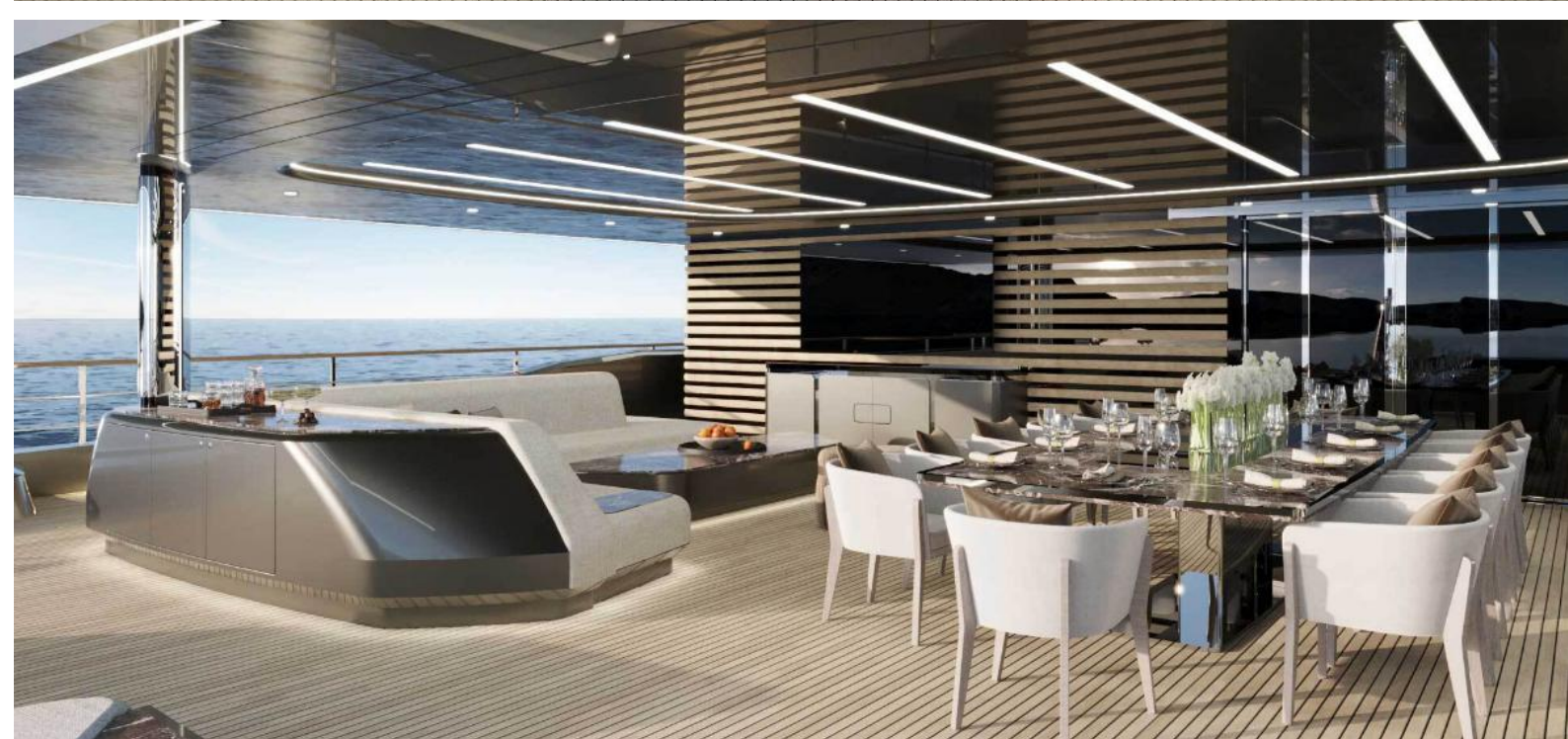
Sunreef recently celebrated its 20th anniversary at the prestigious Monaco Yacht Show in September where the partnership between the popular eco-friendly yacht builders and Ray White Marine was formed.

Ray White Marine said the two powerhouse brands are looking to produce strong sales in the Asia-Pacific region with many active leads already in the pipeline here in Australia.

Founder and CEO Francis Lapp started the company in the early 2000s after owning a catamaran charter company in his home country of France. Sunreef has quickly become the world's premiere eco-conscious luxury yacht manufacturer and built over 350 yachts in its 20 years of operation.

On expanding into the Asia-Pacific region, Lapp described Ray White Marine as a reliable and professional partner and noted that Australia offers a perfect cruising arena for Sunreef's catamarans.





# Whitsunday Vacations

*Your luxury holiday home specialists*



📍 7 The Cove, Airlie Beach



Mandalay House



High Tide,  
Cannonvale



18 The Cove,  
Airlie Beach



Hillcrest By The Beach,  
Airlie Beach



Paradise Cove



Mandalay Aqua



Keep an eye on  
[whitsundayvacations.com.au](http://whitsundayvacations.com.au)  
for exclusive monthly  
specials & discounts!

Book your *Whitsunday escape* today...



0482 797 767



[whitsundayvacations.com.au](http://whitsundayvacations.com.au)



[holiday@whitsundayvacations.com.au](mailto:holiday@whitsundayvacations.com.au)



Whitsunday Vacations



@whitsundayvacations

# Thinking about selling?



Mark  
Beale  
0404 498 790



Adam  
Webster  
0401 235 534



Andrea  
Clarke  
0418 796 323



Anita  
Edgar  
0418 732 968



Brett  
Dwyer  
0447 583 759



Fiona  
Donnellan  
0432 647 708



Jeremiah  
Roberts  
0487 856 617



Nichole  
Kinnish  
0455 512 654



Lynne  
Erricker  
0414 641 612



Paul  
Skinner  
0404 490 079



Simon  
Dymmott  
0400 799 788



Stephanie  
McWhirter  
0467 677 225



Sue  
Shaw  
0438 755 725

Contact one of our friendly sales agents for a confidential discussion about your property.