

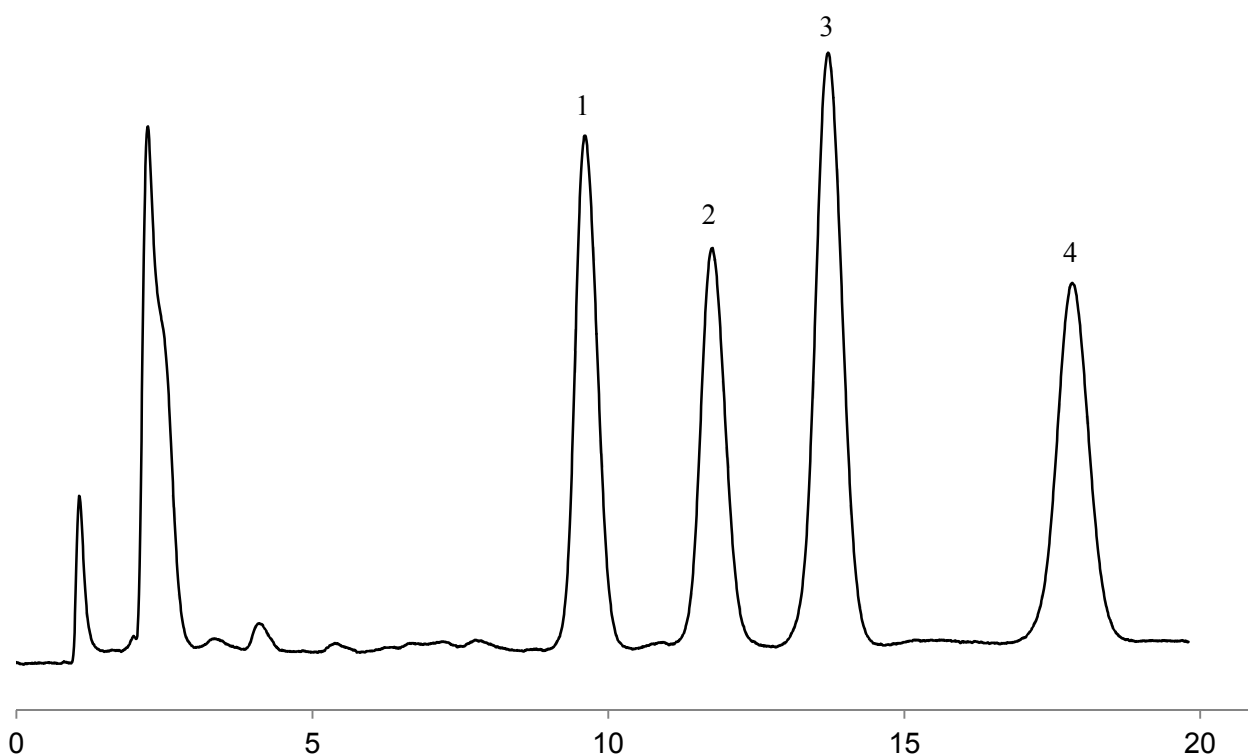
InertSearch™ for LC

Inertsil® Applications

Analysis of branched-chain keto acids derivatized with *o*-phenylenediamine (OPD)

Data No. LL028-0000

*The chromatogram was provided by Dr. Makoto Tsunoda,
Graduate School of Pharmaceutical Sciences, University of Tokyo,
7-3-1 Hongo, Bunkyo-ku, Tokyo 113-0033, Japan*



Conditions

Column : Inertsil ODS-4V
(5 μ m, 250 x 3.0 mm I.D.)
Column Cat. No. : 5020-10922
Eluent : A) CH₃OH
B) H₂O
A/B = 50/50, v/v
Flow rate : 0.6 mL/min
Col. Temp. : 40 °C
Detection : FL Ex 360 nm Em 415 nm
Injection Vol. : 10 μ L
Sample : Standard solution derivatized with OPD

Analyte:

1. α -ketovaleric acid (KV)
2. α -keto-isovaleric acid (KIV)
3. α -keto-isocaproic acid (KIC)
4. α -keto- β -methylvaleric acid (KMV)