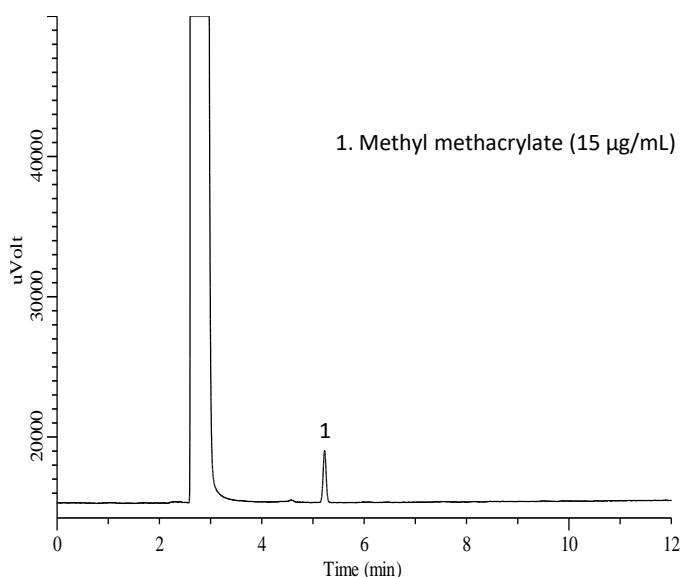


Methyl methacrylate is a monomer of polymethyl methacrylate. Polymethyl methacrylate is used in tableware and cooking utensils because it is highly transparent, light, acid and alkali resistant.

Unreacted monomers may remain in the material during polymethacrylic acid synthesis, the accepted concentration of eluted methyl methacrylate in the dissolution test is defined as 15 µg/mL or less in the sanitary test.

In this application, an aqueous ethanol solution was used to extract a commercially available plastic methacrylic resin container and measured. A standard additive was also measured.

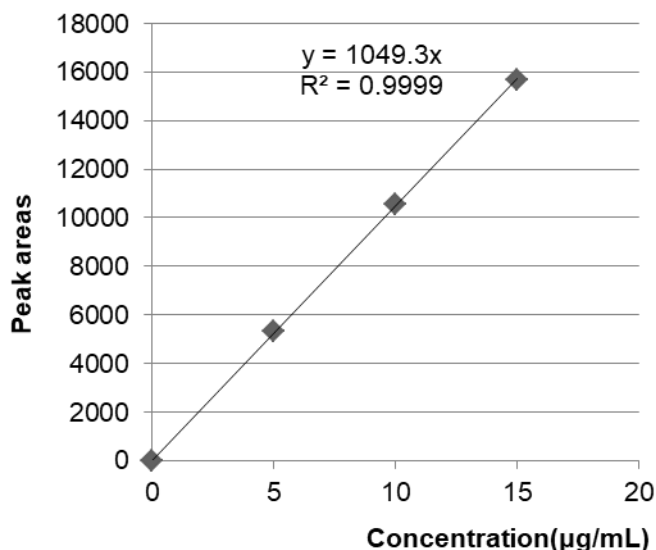
Example: measurement of standard



GC Conditions

System	: GC - FID
Column	: InertCap 1 0.32 mm I.D. x 30 m df = 5.00 µm
Col.Temp.	: 120 °C (1 min hold) - 5 °C/min - 170 °C (1 min hold)
Carrier Gas	: He 65 kPa
Injection	: Split 1:10 Vent flow 14 mL/min 200 °C
Detection	: FID 200 °C
Sample Size	: 15 µg/mL in 20 % Ethanol solution 1 µL

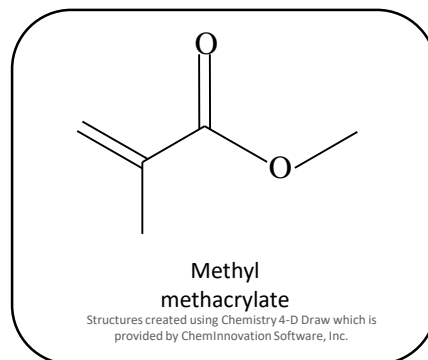
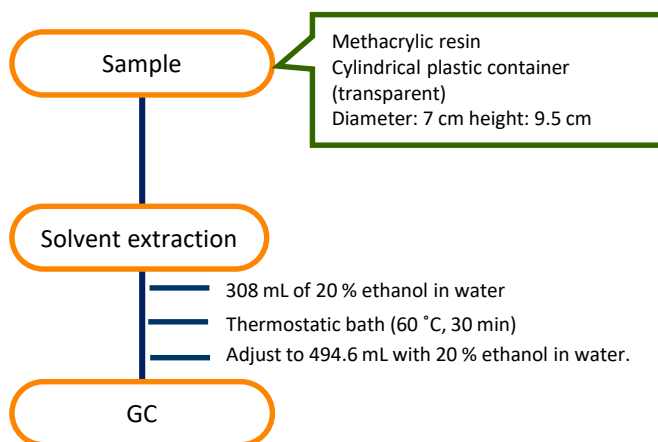
Calibration curve



<Results of repeated measurements>

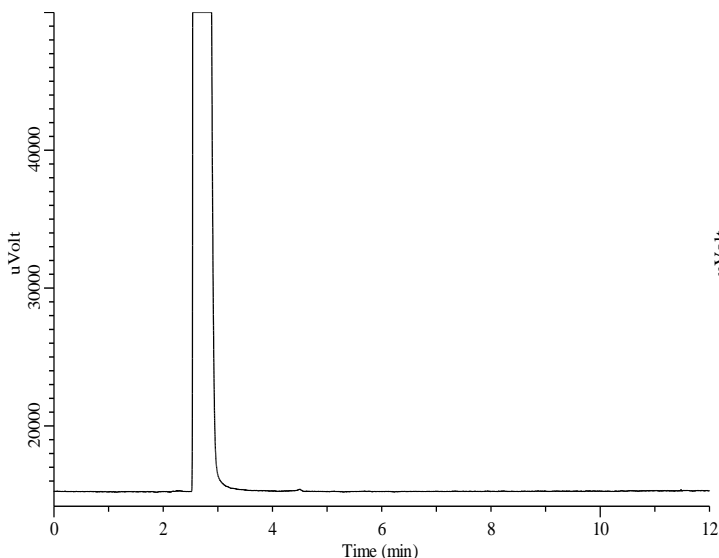
	5 µg/mL	10 µg/mL	15 µg/mL
1	5359	11075	15892
2	5569	10717	15541
3	5232	10234	16190
4	5178	10454	15637
5	5050	10641	15364
6	5446	10105	15519
Mean	5306	10538	15691
SD	189	352	300
RSD (%)	3.57	3.34	1.91

Preliminary processing procedure

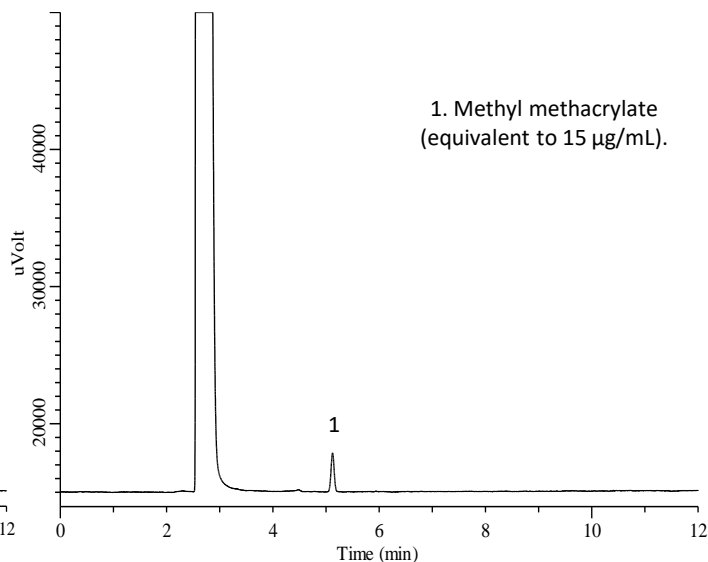


Example: Measurement of sample

Extract



Extract + Methyl methacrylate solution



GL Sciences disclaims any and all responsibility for any injury or damage which may be caused by this data directly or indirectly. We reserve the right to amend this information or data at any time and without any prior announcement.

GL Sciences, Inc. Japan

22-1 Nishishinjuku 6-Chome
Shinjuku-ku, Tokyo,
163-1130, Japan
Phone: +81-3-5323-6620
Fax: +81-3-5323-6621
Email: world@glsciences.com
Web: www.glsciences.com

GL Sciences B.V.

De Sleutel 9
5652 AS Eindhoven
The Netherlands
Phone: +31 (0)40 254 95 31
Email: info@glsciences.eu
Web: www.glsciences.eu

GL Sciences, Inc. USA

4733 Torrance Blvd. Suite 255
Torrance, CA 90503
Phone: 310-265-4424
Fax: 310-265-4425
Email: info@glsciencesinc.com
Web: www.glsciencesinc.com

GL Sciences (ShangHai) Ltd.

Tower B, Room 2003,
Far East International Plaza,
NO,317 Xianxia Road,
Changning District.
Shanghai, China P.C. 200032
Phone: +86 (0)21-6278-2272
Email: contact@glsciences.com.cn
Web: www.glsciences.com.cn

International Distributors

Visit our Website at www.glsciences.com/distributors