

J&T Farm

11th *Production Sale*



Wicked Witch

August 2, 2025- 10:30 a.m.
Lexington, Tennessee
First Farmers Co-op Livestock Center



J&T Farm Production Sale

August 2, 2025 – 10:30 a.m.

Lexington, Tennessee
First Farmers Co-op Livestock Center
16219 Hwy 22 North, Lexington, TN

J&T FARM

Jerry, Tammy and Taylor Thomas
2555 Simmons, Henderson, TN 38340
(731) 608-1312 • (731) 989-0371
jrt1tht2@netzero.net



Sale Manager

Strategy Cattle, LLC - Trey & Mona Scherer
(979) 203-1656 | treyscherer@yahoo.com
www.strategycattle.com

ACCOMMODATIONS

Hampton Inn Lexington
21340 Hwy 22 N.
Wildersville, TN 38388
(731)-602-9510 • 5.3 miles away

Residence Inn Jackson
126 Old Medina Crossing
Jackson, TN
(731) 935-4100 • 30 miles away

Sale Consultant:
Bruce Robbins (210) 861-5136
Mike Green (979) 229-6563

Auctioneer
Anthony Mihalski (210) 415-0888

Schedule of Events

Friday, August 1, 2025

All Day Viewing of Lots

*Prebidding starts at 8AM

Dinner - 5:30 p.m.

Saturday, August 2, 2025

Sale Begins 10:30 a.m.

*Absentee Bidding available by contacting
Sale Manager Trey Scherer at 979-203-1656*

Sale Broadcast Live Online



**FREE HAULING TO BRENHAM, TX
AND POPLARVILLE, MS**



PRINT • SIGNS • MAIL
731-989-7661
2252 DR. F.E. WRIGHT DRIVE
JACKSON, TN 38305

J&T

F A R M

Dear Beefmaster Friends,

On behalf of Tammy, Taylor and myself, we would like to invite you to our eleventh production sale. The sale will be held at the First Farmers Co-op sale facility in Lexington, TN on August 2.

This is our 17th year of breeding Beefmaster cattle. Our mission has become to produce the best Beefmaster that checks all of the boxes. Our push to accomplish that goal has enabled us to offer mostly polled females that have some of the best carcass scores and highest \$T and \$M in the entire breed. These cattle are backed by the breeds best cow families which include Wicked Witch, Diamond Maiden, Oasis, and 509. The sires used were just as formidable. These include Daybreak, Game On, Captain Sugar, Tonto, Genesis, Max, Jackpot, and of course, Game Day. Game Day has steadily asserted himself to rise to the top of the sire list in the Beefmaster breed.

Again, buyers will have the opportunity to put offspring out of a female purchased back into the sale.

If myself, Trey, Mike, Anthony, or Bruce can assist you in anyway, don't hesitate to call.

We hope to see you at the sale. If that's not possible, it will be on premierlivestockauctions.com. Ty Agee will again be providing the food on Friday night.

**Best Regards,
Jerry Thomas**

2555 Simmons, Henderson, TN 38340
(731) 608-1312 - (731) 989-0371
jrt1tht2@netzero.net



Dear Beefmaster Breeders and Friends,

August is the time of year when the temperatures soar and the opportunity to acquire some of the best genetics in the Beefmaster breed do as well. One of the highlights of the Beefmaster year is the annual summer sizzler at the J&T Farms Production sale. 2025 marks the 11th annual sale for Jerry, Tammy, and Taylor Thomas and the quality and consistency is the best yet.

This year the J&T Farms Production sale will again be held at the first Farmer's Coop Livestock facility in Lexington, Tennessee. On August 2nd, you will be presented with an outstanding set of open and bred heifers, donor prospects, and an exciting young pick of fall 2024 born embryo heifer calves. For over a decade now, breeders have come to the J&T Farms event to pick up program enhancing genetics and even their next power donor.

Legendary names such as Wicked Witch, Alexa, and Oasis cow families run deep in the program while new upcoming stars like JT Franchise are forging their own paths toward the forefront. Along with proven cow family lines, breeders will also find cutting edge performance sires such as Gameday, Genesis, Daybreak, Tonto, and more. From promising bred heifers to proven pairs and exquisite opens, this offering is steeped in quality and consistency.

As always, Jerry, Tammy, and Taylor Thomas along with myself and the sales staff will be happy to offer help in selecting the cattle or making sure your purchases find their ways safely home. The family friendly atmosphere at the First Farmers Coop and relaxed sale buying experience is one you will enjoy. Hauling and holding of sale cattle is available and this year, we will again offer free delivery to a central point (Brenham) in Texas.

With the utmost sincerity, we want to welcome you to the sale on August the 2nd in Lexington, Tennessee and also thank you for your patronage and friendships over the years that have made this sale the hottest event of the summer!

**Sincerely,
Trey Scherer, Strategy Cattle, LLC**

REFERENCE SIRES



CJ'S GAMEDAY

Homozygous Polled
C1082272
Sire: CJ'S JUSTICE
Dam: CHRK MILKY WAY



JT LET'R RIP

Homozygous Polled & Black
C1158388
Sire: CJ POWER PLAY
Dam: JT2117

REFERENCE SIRES

JT DAYBREAK

Homozygous Polled & Red

C1160221

Sire: CJ'S GAME DAY

Dam: CJ HEARTBREAK



JT NIGHTFALL

C1167205

Sire: CJ'S GAME DAY

Dam: CJ HEARTBREAK



REFERENCE DAMS



WICKED WITCH

C913639
Sire: CAVALIER
Dam: WITCHY WOMAN

JT FRANCHISE

C1051486
Sire: PAINTED TIGER
Dam: MISS GEIGER



JT WICKED TIGER

C1063673
Sire: PAINTED TIGER
Dam: WICKED WITCH



REFERENCE DAMS

CF ALEXA

C1094749

Sire: CF SUGAR BRITCHES

Dam: DIAMOND MAIDEN



JT SOMETHING ROYAL

C1080862

Sire: HIGH VELOCITY

Dam: SEX LIFE CLONE



1A

TT 39 ET

DNA# NE04934014

TT BEEFMASTERS

Polled

Pick of Open Heifers

ID TT 39 ET
BBU NO C1197774
SEX Female
DOB 10/1/24
COLOR Red
BREEDER TT BEEFMASTERS

SIRE
JT DAYBREAK JT4921

CJ'S GAME DAY 28/16
CJ HEARTBREAK 12/17 12/17

CJ'S JUSTICE J100
CHRK MILKY WAY 1863X
CF MASTERPIECE 685
CJ'S DIAMOND OF SOUL 509

DAM
JT FRANCHISE JT5628

PAINTED TIGER 3-390
MISS GEIGER 2649/6

PAINTED WARRIOR 0026
1-126
CAVALIER 19/5
L2 MAIDEN LADY 154/00

EXPECTED PROGENY DIFFERENCES										ULTRASOUND EPDs				INDEXES			INDIVIDUAL PERFORMANCE RECORDS									
	CE	BW	WW	YW	MILK	MCE	MWWT	SC	STAY	AFC	REA	%IME	FAT	\$T	\$M	FE\$	ADG	BW	WW	YW	SC	REA	IME	RIB FT	RUMP FT	
EPD	2.57	1.2	34	46	18	2.74	23.33	0.53	0.87	0.72	0.01	0.11	0.01	94.74	21.85	14.34	ADG	88								
ACC	0.15	0.26	0.24	0.25	0.13	0.09		0.18	0.11	0.09	0.24	0.25	0.24				RATIO	107								
%RK	80	80	30	35	35	75	25	45	65	55	80	25	95	35	30	55	Correl	5								

1B

TT 37 ET

DNA# NE04601610

TT BEEFMASTERS

Horned

Pick of Open Heifers

ID TT 37 ET
BBU NO C1197772
SEX Female
DOB 10/2/24
COLOR Red
BREEDER TT BEEFMASTERS

SIRE
L2 CAPTAIN SUGAR 12/02

INFINITY 120/96
SUGAR ANN 45/6

RED SUGAR 104/93
VANNA 5660
RANGER'S PRIDE 815/9
6-2

DAM
JT FRANCHISE JT5628

PAINTED TIGER 3-390
MISS GEIGER 2649/6

PAINTED WARRIOR 0026
1-126
CAVALIER 19/5
L2 MAIDEN LADY 154/00

EXPECTED PROGENY DIFFERENCES										ULTRASOUND EPDs				INDEXES			INDIVIDUAL PERFORMANCE RECORDS									
	CE	BW	WW	YW	MILK	MCE	MWWT	SC	STAY	AFC	REA	%IME	FAT	\$T	\$M	FE\$		BW	WW	YW	SC	REA	IME	RIB FT	RUMP	
EPD	2.47	1.5	32	43	9	3.25	15.13	-0.21	0.53	1.3	-0.27	0.15	0.03	93.78	9.22	0.18	ADG	70								
ACC	0.16	0.26	0.26	0.25	0.23	0.12		0.23	0.19	0.12	0.25	0.25	0.24				RATIO	92								
%RK	80	90	95	95	55	35	95	95	95	4	95	90	50	95	90	95	Correl	5								

This is your chance to get in early on the future of J&T and TT. After 17 years of beefmasters, this JT Franchise cow is the safest bet above all others. The decision will be yours as to which female you pick. The Daybreak and the Captain Sugar will both be home runs. You can buy both with confidence because this cow never misses.

2A

JT 303 ET

DNA# NE04934011

J & T FARM

Polled

Pick of Open Heifers

ID JT 303 ET
BBU NO C1197777
SEX Female
DOB 10/3/24
COLOR Red
BREEDER J & T FARM

SIRE
JT DAYBREAK JT4921

CJ'S GAME DAY 28/16
CJ HEARTBREAK 12/17 12/17

CJ'S JUSTICE J100
CHRK MILKY WAY 1863X
CF MASTERPIECE 685
CJ'S DIAMOND OF SOUL 509

DAM
JT WICKED WITCH CLONE IV 7/04-4

CAVALIER 19/5
WITCHY WOMAN 43/01

SPARTACUS 86/653
1-5/5
SYNERGY 84/95
VANNA 2000 45/00

EXPECTED PROGENY DIFFERENCES										ULTRASOUND EPDs				INDEXES			INDIVIDUAL PERFORMANCE RECORDS									
	CE	BW	WW	YW	MILK	MCE	MWWT	SC	STAY	AFC	REA	%IME	FAT	\$T	\$M	FE\$		RW	WW	YW	SC	REA	IME	RIB FT	RUMP	
EPD	2.43	1.3	40	54	16	2.52	23.52	0.53	2.51	-0.72	0.1	0.19	-0.01	109.73	23.92	16.84	ADG	88								
ACC	0.15	0.26	0.25	0.26	0.14	0.1		0.19	0.12	0.1	0.26	0.27	0.25				RATIO	106								
%RK	80	85	15	20	35	85	15	45	30	90	70	15	95	20	25	40	Correl	17								

2B

JT 304 ET
 DNA# NE04934027

J & T FARM

Polled

Pick of Open Heifers

 ID **JT 304 ET**
 BBU NO **C1197778**
 SEX **Female**
 DOB **10/2/24**
 COLOR **Red**
 BREEDER **J & T FARM**

 SIRE **BLACK BAYOU 1071/3**
CHRK GENESIS 1500T 1500T
CHRK MISS REBA 1194/5
 DAM **CAVALIER 19/5**
JT WICKED WITCH CLONE IV 7/04-4
WITCHY WOMAN 43/01

 POLLED MANDATE 404/5
 2C46/8
 DOC 2D-0C81
 906/2
 SPARTACUS 86/653
 1-5/5
 SYNERGY 84/95
 VANNA 2000 45/00

EXPECTED PROGENY DIFFERENCES										ULTRASOUND EPDs				INDEXES			INDIVIDUAL PERFORMANCE RECORDS									
	CE	BW	WW	YW	MILK	MCE	MWWT	SC	STAY	AFC	REA	%IMF	FAT	\$T	\$M	FE\$	ADJ TRAIT	BW	WW	YW	SC	REA	IMF	RIB FT	RUMP FT	
EPD	3.26	0.4	35	47	11	1.89	29.12	0.65	3.02	-0.04	0.08	0.14	-0.02	96.74	25.73	14.48	65									
ACC	0.16	0.27	0.26	0.26	0.23	0.12		0.24	0.19	0.12	0.26	0.27	0.26				98									
%RK	60	55	25	30	20	>95	20	40	25	90	70	20	85	30	15	55	Contmp	17								

Here is another super opportunity. Daybreak and Genesis are both excellent matings on Wicked Witch. The Daybreak calves have been super consistent, polled and loaded with performance. Genesis has been a great mating as well. The Genesis daughter we sold last year that was purchased by Lopez Beefmasters had body and bone galore while having almost a 5 IMF.

3

JT 1424
 DNA# NE04934074

J & T FARM

Polled

Open

 ID **JT 1424**
 BBU NO **C1196270**
 SEX **Female**
 DOB **4/2/24**
 COLOR **Red**
 BREEDER **J & T FARM**

 SIRE **CJ'S JUSTICE J100**
CJ'S GAME DAY 28/16
CHRK MILKY WAY 1863X
 DAM **CF SUGAR BRITCHES 040**
WICKEDEST WITCH JT2712
WICKED WITCH 7/04

 BLACK GOLD 27
 CJ'S DARK SECRET 01-8
 CHRK GENESIS 1500T 1500T
 721T10
 L2 CAPTAIN SUGAR 12/02
 OASIS 655
 CAVALIER 19/5
 WITCHY WOMAN 43/01

	EXPECTED PROGENY DIFFERENCES								ULTRASOUND EPDs				INDEXES			INDIVIDUAL PERFORMANCE RECORDS									
	CE	BW	WW	YW	MILK	MCE	MWWT	SC	STAY	AFC	REA	%IMF	FAT	\$T	\$M	FE\$	ADJ TRAIT	BW	WW	YW	SC	REA	IMF	RIB FT	RUMP FT
EPD	3.08	1	48	65	10	2.73	34.26	0.88	-0.06	-0.78	0.34	0.15	-0.01	128.85	30.51	16.44	63	617	1024		12.89	5.37	0.48	0.77	
ACC	0.31	0.53	0.51	0.52	0.21	0.18		0.36	0.19	0.18	0.51	0.57	0.49				102	113	112		118	94	142	117	
%RK	65	75	5	10	35	75	4	25	60	55	40	20	>95	5	10	40	Contmp	5	4	4		4	4	4	4

This is one good rig right here. JT 1424 is slick polled, cherry red and almost flawless. She has the Gameday look with Witch's depth and predictability. A great udder will be a given here. Now, consider her performance. She has a 5.31 IMF with 1.19 REA/CWT. This is a rare opportunity.

4

JT 329 ET
 DNA# NE04934079

J & T FARM

Scurred

Open

 ID **JT 329 ET**
 BBU NO **C1197780**
 SEX **Female**
 DOB **4/30/24**
 COLOR **Red**
 BREEDER **J & T FARM**

 SIRE **HIGH VELOCITY 61/11**
THE ROCK JT 817
JT FIRST LADY 5/12
 DAM **CJ'S SURE FIRE 39/16**
NG MS SURE FIRE 409J 409J
CHRK MISS MILLIE 409D

 L2 CAPTAIN JACK 43/07
 TOUCH OF SUGAR 80/06
 CF DREAM CATCHER 914
 CJ'S DIAMOND OF SOUL 509
 EMS RING OF FIRE 130
 MISS CJ 1014 1014
 EMS HIGH PROFILE 213
 CHRK DAISY MAE 2056

EXPECTED PROGENY DIFFERENCES										ULTRASOUND EPDs				INDEXES			INDIVIDUAL PERFORMANCE RECORDS									
	CE	BW	WW	YW	MILK	MCE	MWWT	SC	STAY	AFC	REA	%IMF	FAT	\$T	\$M	FE\$	ADJ TRAIT	BW	WW	YW	SC	REA	IMF	RIB FT	RUMP FT	
EPD	4.63	0.1	34	44	11	2.96	28.45	0.53	-0.59	-1.13	0.09	0.24	-0.01	93.33	25.82	12.59	70	566	1017		15.62	4.5	0.39	0.56		
ACC	0.15	0.25	0.24	0.24	0.13	0.09		0.18	0.09	0.09	0.25	0.26	0.24				RATIO	96	99	99		105	81	92	104	
%RK	25	40	30	40	20	60	25	45	65	30	70	10	>95	35	15	70	Contmp	2	2	2		2	2	2	2	

JT 329 has got it going on. Since we were unsure how to mate this Sure Fire daughter, we went with something safe like The Rock. This female is loaded with bone, phenotype, and performance. She has a 4.5 IMF with almost a 16 inch ribeye (1.55 REA/CWT). This is the right kind.

5

JT 328 ET
DNA# NE04934031

J & T FARM

Scurred Open

ID **JT 328 ET**
BBU NO **P352924**
SEX **Female**
DOB **4/30/24**
COLOR **Black**
BREEDER **J & T FARM**

SIRE HIGH VELOCITY 61/11
THE ROCK JT 817
JT FIRST LADY 5/12

L2 CAPTAIN JACK 43/07
TOUCH OF SUGAR 80/06
CF DREAM CATCHER 914
CJ'S DIAMOND OF SOUL 509

DAM BIG TEX 5811
JT J522 JT522
JT303

LYSSY 112/458 112/458
FRENZEL 0824 0824
EMS RING OF FIRE 130
033

	EXPECTED PROGENY DIFFERENCES								ULTRASOUND EPDs				INDEXES			INDIVIDUAL PERFORMANCE RECORDS									
	CE	BW	WW	YW	MILK	MCE	MWWT	SC	STAY	AFC	REA	%IMF	FAT	\$T	\$M	FE\$		BW	WW	YW	SC	REA	IMF	RIB FT	RUMP FT
EPD	3.64	0.4	31	42	11	2.67	26.46	0.57	-0.17	-0.9	-0.22	0.19	-0.01	89.34	22.25	12.52	ADJ TRAIT	65	572	1032		14.18	6.58	0.46	0.52
ACC	0.29	0.41	0.41	0.46	0.15	0.17		0.3	0.16	0.17	0.46	0.52	0.44				RATIO	104	101	101		95	119	108	96
%RK	50	55	40	40	20	80	30	45	60	45	95	15	>95	40	30	70	Contmp	2	2	2		2	2	2	2

JT 328 puts it all together. This Rock daughter is loaded with power, bone, and phenotype. She can be easily mated with anything and still excel. Her performance numbers are off the charts as well. She has a 6.58 IMF with a 1.4 REA/CWT.

6

JT 1524
DNA# NE04934030

J & T FARM

Polled Open

ID **JT 1524**
BBU NO **C1196271**
SEX **Female**
DOB **4/15/24**
COLOR **Black**
BREEDER **J & T FARM**

SIRE CJ'S JUSTICE J100
CJ'S GAME DAY 28/16
CHRK MILKY WAY 1863X

BLACK GOLD 27
CJ'S DARK SECRET 01-8
CHRK GENESIS 1500T 1500T
721T10

DAM HIGH VELOCITY 61/11
JT SOMETHING ROYAL JT5616
PANTHER'S SEX LIFE CLONE 955

L2 CAPTAIN JACK 43/07
TOUCH OF SUGAR 80/06
SANDMAN 10-1
SEX APPEAL 062/0

EXPECTED PROGENY DIFFERENCES										ULTRASOUND EPDs				INDEXES			INDIVIDUAL PERFORMANCE RECORDS									
	CE	BW	WW	YW	MILK	MCE	MWWT	SC	STAY	AFC	REA	%IMF	FAT	\$T	\$M	FE\$	ADJ TRAIT	BW	WW	YW	SC	REA	IMF	RIB FT	RUMP FT	
EPD	5.27	-0.6	34	46	11	2.73	27.72	0.43	-1.72	-0.59	-0.16	0.25	-0.02	96.92	23.78	13.28	58	485	844		10.02	7.35	0.29	0.72		
ACC	0.31	0.52	0.49	0.49	0.17	0.17		0.34	0.17	0.17	0.49	0.55	0.47				RATIO	110	89	92		92	129	86	110	
%RK	15	20	30	35	20	75	25	55	80	65	90	10	85	30	25	65	Contmp	5	4	4		4	4	4	4	

JT 1524 is royally bred. Something Royal is our Miss Beefmaster winner. She and Gameday combined to blow up the performance data. JT 1524 has a 7.35 IMF and a 1.16 REA/CWT while still being from predictable cow families.

7

JT 1624
DNA# NE04934032

J & T FARM

Polled Open

ID **JT 1624**
BBU NO **C1196272**
SEX **Female**
DOB **4/20/24**
COLOR **Black**
BREEDER **J & T FARM**

SIRE CJ'S JUSTICE J100
CJ'S GAME DAY 28/16
CHRK MILKY WAY 1863X

BLACK GOLD 27
CJ'S DARK SECRET 01-8
CHRK GENESIS 1500T 1500T
721T10

DAM CF SUGAR BEAR 933
JT/2812
TFS 616 616

L2 CAPTAIN SUGAR 12/02
OASIS 655
BLACK JACK 21
POLLY ANNA 8/1

EXPECTED PROGENY DIFFERENCES									ULTRASOUND EPDs				INDEXES			INDIVIDUAL PERFORMANCE RECORDS									
	CE	BW	WW	YW	MILK	MCE	MWWT	SC	STAY	AFC	REA	%IMF	FAT	\$T	\$M	FE\$	ADJ TRAIT	BW	WW	YW	SC	REA	IMF	RIB FT	RUM FT
EPD	3.76	0.4	33	46	10	2.79	26.16	0.5	-0.6	-1.13	0.13	0.06	-0.03	94.44	20.81	15.12	61	528	926		10.7	4.65	0.27	0.46	
ACC	0.31	0.52	0.49	0.49	0.18	0.18		0.34	0.18	0.18	0.49	0.54	0.47				RATIO	105	97	101		98	82	80	70
%RK	45	55	35	35	35	70	30	50	65	30	65	35	50	35	35	50	Contmp	5	4	4		4	4	4	4

This 2812 cow of Taylor's never misses. JT 1624 is no exception. She is black and polled with a big top. She is really easy fleshing with plenty of performance. She has a 4.65 IMF with a 1.14 REA/CWT.

8

JT HAIL MARY

DNA# 111422027341

PARKER FARMS GA
Polled Open

ID JT HAIL MARY
BBU NO C1184460
SEX Female
DOB 5/3/24
COLOR Black
BREEDER J & T FARM

SIRE CJ'S JUSTICE J100
CJ'S GAME DAY 28/16
CHRK MILKY WAY 1863X
DAM L2 CAPTAIN SUGAR 12/02
JT RED HOT HOTTIE JT186
DANICA JT525

BLACK GOLD 27
CJ'S DARK SECRET 01-8
CHRK GENESIS 1500T 1500T
721T10
INFINITY 120/96
SUGAR ANN 45/6
CAVALIER 19/5
SEX LIFE CLONE 954

EXPECTED PROGENY DIFFERENCES										ULTRASOUND EPDs				INDEXES			INDIVIDUAL PERFORMANCE RECORDS									
	CE	BW	WW	YW	MILK	MCE	MWWT	SC	STAY	AFC	REA	%IMF	FAT	\$T	\$M	FE\$	ADJ TRAIT	BW	WW	YW	SC	REA	IMF	RIB FT	RUMP FT	
EPD	2.53	1.1	35	50	10	2.93	27.8	0.4	-3.1	-1.15	0.16	0.04	-0.02	99.85	21.17	14.37	72	610	786		8.41	0.64	0.19	0.31		
ACC	0.31	0.49	0.41	0.42	0.16	0.17		0.33	0.18	0.17	0.4	0.43	0.38				88									
%RK	80	80	25	25	35	60	25	60	90	30	65	40	85	25	35	55	Contmp	5	1	1		1	1	1	1	

This Game Day daughter goes back to Danica, Captain Sugar and Sex Life. These are proven and predictable genetics. This polled female has a great phenotype and should be well uddered. Buy her with confidence.

9

JT 1724

DNA# NE04934078

J & T FARM
Polled Open

ID JT 1724
BBU NO C1196273
SEX Female
DOB 5/8/24
COLOR Black
BREEDER J & T FARM

SIRE CJ POWER PLAY 54/17
JT LET'R RIP JT3421
JT2117 JT2117
DAM 829
JRS 2121 2121
1911

CF ADRENALINE 170
CJ'S DIAMOND OF SOUL 509
CF LIMITED EDITION 861/3
4510
VINSON 021 021
R/357
9413 9413
147

EXPECTED PROGENY DIFFERENCES										ULTRASOUND EPDs				INDEXES			INDIVIDUAL PERFORMANCE RECORDS									
	CE	BW	WW	YW	MILK	MCE	MWWT	SC	STAY	AFC	REA	%IMF	FAT	\$T	\$M	FE\$	ADJ TRAIT	BW	WW	YW	SC	REA	IMF	RIB FT	RUMP FT	
EPD	3.28	0.7	25	36	10	3.1	23.02	0.39	0.14	-0.31	0.17	-0.04	-0.02	75.38	16.52	17.31	61	520	806		11.27	3.51	0.32	0.54		
ACC	0.31	0.48	0.46	0.46	0.11	0.17		0.28	0.15	0.17	0.45	0.52	0.43				109	92	96		98	75	99	118		
%RK	60	65	60	55	35	45	50	60	55	80	60	60	85	55	55	35	Contmp	6	6	6		6	6	6	6	

Let'r Rip seems to work well on these Sanders cows. JT 1724 is easy fleshing with a big top and a great phenotype. She has a 3.51 IMF with a 1.42 REA/CWT. These polled females are well uddered and easy doing.

10

JT 1824

DNA# NE04934077

J & T FARM
Scurred Open

ID JT 1824
BBU NO C1196274
SEX Female
DOB 5/10/24
COLOR Black
BREEDER J & T FARM

SIRE EMS BET ON BUBBA 507
EMS BET ON BRADY 080
EMS QUEEN OF DREAMS 777
DAM CJ POWER PLAY 54/17
JT JT4321 JT4321
JT 2118 JT 2118

EMS HEADLINER 029
EMS BET ON BUFF 8062
EMS KING GEORGE 425
CATCHIN A DREAM 1140
CF ADRENALINE 170
CJ'S DIAMOND OF SOUL 509
BIG TEX 5811
033

EXPECTED PROGENY DIFFERENCES										ULTRASOUND EPDs				INDEXES			INDIVIDUAL PERFORMANCE RECORDS									
	CE	BW	WW	YW	MILK	MCE	MWWT	SC	STAY	AFC	REA	%IMF	FAT	\$T	\$M	FE\$	ADJ TRAIT	BW	WW	YW	SC	REA	IMF	RIB FT	RUMP FT	
EPD	3.2	0.8	38	43	8	3.01	26.8	0.69	-0.24	-1.74	0.23	0.4	-0.02	93.73	28.29	8.58	71	582	897		12.69	8.04	0.34	0.51		
ACC	0.31	0.48	0.46	0.47	0.12	0.17		0.29	0.16	0.17	0.47	0.54	0.45				RATIO	94	103	107		110	171	106	111	
%RK	60	70	20	40	75	55	25	35	60	10	55	2	85	35	10	90	Contmp	6	6	6		6	6	6	6	

Brady passed for a game winner here. JT 1824 kind of exceeded expectations. Her carcass data is off the charts while still having plenty of body and bone. She has a 8.04 IMF with a 1.46 REA/CWT. Don't miss her!

11

JT 2324
 DNA# NEO4934033

J & T FARM

Horned Open

 ID **JT 2324**
 BBU NO **C1196279**
 SEX **Female**
 DOB **5/10/24**
 COLOR **Red**
 BREEDER **J & T FARM**

SIRE EMS BET ON BUBBA 507
 EMS BET ON BRADY 080
 EMS QUEEN OF DREAMS 777

DAM WPR'S BODACIOUS MAGNET 1833
 VRHOLDEN AMAZING GRACE 21161
 PARADISE R16180

EMS HEADLINER 029
 EMS BET ON BUFF 8062
 EMS KING GEORGE 425
 CATCHIN A DREAM 1140
 WPR'S CHICK MAGNET 1427
 WPR'S 1325 1325
 BUSTER 362 362
 RH1300

	EXPECTED PROGENY DIFFERENCES								ULTRASOUND EPDs				INDEXES			INDIVIDUAL PERFORMANCE RECORDS									
	CE	BW	WW	YW	MILK	MCE	MWWT	SC	STAY	AFC	REA	%IMF	FAT	\$T	\$M	FE\$	ADJ TRAIT	BW	WW	YW	SC	REA	IMF	RIB FT	RUMP FT
EPD	2.47	1.1	41	51	7	2.9	27.08	0.87	-0.63	-1.12	0.27	-0.09	-0.03	100.1	26.36	12.75		73	629	924		10.73	4.47	0.37	0.46
ACC	0.31	0.49	0.47	0.48	0.12	0.17		0.28	0.16	0.17	0.48	0.55	0.46				RATIO	91	112	110		93	95	115	100
%RK	80	80	15	25	85	65	25	25	65	30	50	75	50	25	15	65	Contmp	6	6	6		6	6	6	6

This is the last of the Brady progeny. He didn't disappoint on this Dr. Holden female. JT 2324 is loaded with power and bone. She also exhibits superior carcass data with a 4.47 IMF and a 1.2 REA/CWT.

12

JT 1924
 DNA# NEO4934034

J & T FARM

Polled Open

 ID **JT 1924**
 BBU NO **C1196275**
 SEX **Female**
 DOB **5/20/24**
 COLOR **Black**
 BREEDER **J & T FARM**

SIRE CJ POWER PLAY 54/17
 JT LET'R RIP JT3421
 JT2117 JT2117

DAM ADDICTION 1 K-160
 JRS 2105 2105
 508

CF ADRENALINE 170
 CJ'S DIAMOND OF SOUL 509
 CF LIMITED EDITION 861/3
 4510
 TOTAL ADDICTION 1419
 SPREE K-115
 CHRK 1913 1913
 T116

EXPECTED PROGENY DIFFERENCES										ULTRASOUND EPDs				INDEXES			INDIVIDUAL PERFORMANCE RECORDS									
	CE	BW	WW	YW	MILK	MCE	MWWT	SC	STAY	AFC	REA	%IMF	FAT	\$T	\$M	FE\$	ADJ TRAIT	BW	WW	YW	SC	REA	IMF	RIB FT	RUMP FT	
EPD	4.91	0	32	46	10	3.18	26.39	0.65	-0.87	-0.52	0.35	0	-0.02	93.04	21.82	20.5		59	560	825		12.7	4.32	0.33	0.62	
ACC	0.31	0.48	0.46	0.46	0.12	0.17		0.28	0.15	0.17	0.45	0.52	0.43				RATIO	112	99	98		110	92	103	135	
%RK	20	40	35	35	35	40	30	40	70	70	40	50	85	35	30	20	Contmp	6	6	6		6	6	6	6	

JT 1924 is a really nice polled performance female. She is big topped and easy fleshing. Let'r Rip on this Jim Sanders dam worked like a charm. This girl has a 4.32 IMF with a 1.6 REA/CWT. It's hard to argue about what she has going on no matter what you like.

13

JT 2124
 DNA# NEO4934073

J & T FARM

Polled Open

 ID **JT 2124**
 BBU NO **C1196277**
 SEX **Female**
 DOB **5/25/24**
 COLOR **Black**
 BREEDER **J & T FARM**

SIRE CJ POWER PLAY 54/17
 JT LET'R RIP JT3421
 JT2117 JT2117

DAM CF BAYOU SILK 742/4
 20/8
 9/1

CF ADRENALINE 170
 CJ'S DIAMOND OF SOUL 509
 CF LIMITED EDITION 861/3
 4510
 LOGAN 62M27
 CF PERFECT SILK 917/7
 TIGER BRITCHES 509
 9/1

	EXPECTED PROGENY DIFFERENCES								ULTRASOUND EPDs				INDEXES			INDIVIDUAL PERFORMANCE RECORDS									
	CE	BW	WW	YW	MILK	MCE	MWWT	SC	STAY	AFC	REA	%IMF	FAT	\$T	\$M	FE\$	ADJ TRAIT	BW	WW	YW	SC	REA	IMF	RIB FT	RUMP FT
EPD	2.14	1	20	22	8	3.31	18.41	0.13	-3.14	-0.38	-0.16	-0.03	-0.03	51.94	15.09	10.73		67	553	870		10.06	5.38	0.31	0.68
ACC	0.3	0.46	0.45	0.44	0.13	0.17		0.28	0.15	0.17	0.44	0.51	0.42				RATIO	96	101	95		92	95	92	103
%RK	85	75	75	90	75	35	80	85	90	80	90	60	50	85	65	80	Contrn	5	4	4		4	4	4	4

How about a fancy black female? These Let'r Rip females are very consistent and loaded with performance. JT 2124 has a 5.38 IMF while still having a 1.2 REA/CWT. When you combine her performance with a pedigree full of predictable genetics, you have a can't miss female.

14

JT 2224

DNA# NE04934075

J & T FARM

Polled

Open

ID JT 2224
BBU NO C1196278
SEX Female
DOB 5/28/24
COLOR Red
BREEDER J & T FARM

SIRE
CJ'S GAME DAY 28/16

CJ'S JUSTICE J100
CHRK MILKY WAY 1863X

BLACK GOLD 27
CJ'S DARK SECRET 01-8
CHRK GENESIS 1500T 1500T
721T10
WPR'S CHICK MAGNET 1427
WPR'S HERE'S THE BEEF 1554
WPR'S THE TOTAL PACKAGE 7595
WPR'S 24 KARAT 658

DAM
WPR SPELLBOUND 2231

WPR'S POLLED LEGACY 1753
WPR'S TOTAL GOLD 1621

	EXPECTED PROGENY DIFFERENCES								ULTRASOUND EPDs				INDEXES			INDIVIDUAL PERFORMANCE RECORDS									
	CE	BW	WW	YW	MILK	MCE	MWWT	SC	STAY	AFC	REA	%IMF	FAT	\$T	\$M	FE\$		BW	WW	YW	SC	REA	IMF	RIB FT	RUMP FT
EPD	2.05	0.6	46	63	8	2.37	31.34	0.78	1.91	-0.2	0.12	0.02	-0.02	123.57	27.59	21.57	ADJ TRAIT	72	558	813		11.42	4	0.35	0.34
ACC	0.31	0.52	0.51	0.14	0.17			0.35	0.16	0.17	0.51	0.57	0.49				RATIO	92	99	97		99	85	109	74
%RK	85	60	10	10	75	90	10	30	35	85	65	45	85	10	15	15	Contmp	6	6	6		6	6	6	6

JT 2224 is a pretty sweet looking lady. Gameday has the ability to put a pretty head on everything. This female is also a performance queen. She has a 4 IMF with a 1.53 REA/CWT. She is young, but I wouldn't overlook her.

15

JT 331 ET

DNA# NE04934076

J & T FARM

Polled

Open

ID JT 331 ET
BBU NO C1197779
SEX Female
DOB 6/6/24
COLOR Red
BREEDER J & T FARM

SIRE
VFF ENFORCER 306E 306E

VFF NEW HORIZON 19/3
VFF MS ADV 77-4 77-4

MAVERICK 17/557
VFF HONEY GIRL 43/8 43/8
VFF MR 16/2 16/2
009Y
L2 CAPTAIN SUGAR 12/02
OASIS 655
CAVALIER 19/5
L2 MAIDEN LADY 154/00

DAM
CF ALEXA 7348

CF SUGAR BRITCHES 040
DIAMOND MAIDEN 1931/4

	EXPECTED PROGENY DIFFERENCES								ULTRASOUND EPDs				INDEXES			INDIVIDUAL PERFORMANCE RECORDS									
	CE	BW	WW	YW	MILK	MCE	MWWT	SC	STAY	AFC	REA	%IMF	FAT	\$T	\$M	FE\$	ADJ TRAIT	BW	WW	YW	SC	REA	IMF	RIB FT	RUMP FT
EPD	3.18	0.8	49	66	8	2.41	32.44	0.97	-3.45	-1.25	0.26	0.28	-0.01	131.88	29.29	20.62		71	574	892		11.4	4.91	0.43	0.66
ACC	0.16	0.26	0.26	0.27	0.19	0.1		0.24	0.11	0.1	0.27	0.27	0.27				RATIO								
%RK	60	70	4	5	75	90	10	20	95	25	50	5	>95	4	10	20	Contmp	1	1	1		1	1	1	1

This is one nice red polled female. Her sire is red polled and loaded with performance while her dam is backed by the best line of cattle in the breed. JT 331 is sure to impress as she is loaded with phenotype and performance. Her carcass data with almost a 5 IMF and 1.36 REA/CWT is in rare company in this breed.

16

JT 332

DNA#

J & T FARM

Horned

Exposed

ID JT 332
BBU NO C1197853
SEX Female
DOB 2/20/24
COLOR Black
BREEDER J & T FARM
EXPOSED TO: LET'R RIP
C1158388

SIRE
EMS BET ON BRADY 080

EMS BET ON BUBBA 507
EMS QUEEN OF DREAMS 777

EMS HEADLINER 029
EMS BET ON BUFF 8062
EMS KING GEORGE 425
CATCHIN A DREAM 1140
BONFIRE 8038
EMS COLOR ME SUGAR 811
TRIPLE THREAT 1503/7
AMAZING ROSE 8032

DAM
MISS CJ 1647 1647
101/1

EMS RING OF FIRE 130

EXPECTED PROGENY DIFFERENCES										ULTRASOUND EPDs				INDEXES			INDIVIDUAL PERFORMANCE RECORDS									
	CE	BW	WW	YW	MILK	MCE	MWWT	SC	STAY	AFC	REA	%IMF	FAT	\$T	\$M	FE\$	ADJ TRAIT	BW	WW	YW	SC	REA	IMF	RIB FT	RUMP FT	
EPD	4.12	0	33	41	7	2.46	23.14	0.66	1.73	-1.65	0.36	0.11	-0.03	85.58	22.11	8.66		64								
ACC	0.15	0.24	0.23	0.24	0.13	0.09		0.18	0.12	0.09	0.24	0.25	0.23				RATIO	100								
%RK	40	40	35	45	85	90	50	40	35	10	40	25	50	45	30	90	Contmp	4								

This Brady daughter is a really solid heifer. She has plenty of bone to go with a really correct phenotype. She missed the opportunity to wow you with performance since she had switched pastures at scan time. I'll take that blame but don't discount her because her dam was loaded with scan numbers.

17

A AND W 2174

DNA#

J & T FARM
Horned Exposed

ID **A AND W 2174**
BBU NO **C1197346**
SEX **Female**
DOB **2/17/24**
COLOR **Red**
BREEDER **A & W FARMS**
EXPOSED TO: LET'R RIP
C1158388

SIRE **THE HOUSTON TEXAN 533**
HDH TEXAS RAINE 8-30
CHRK 1930 1930

DAM **JT TRUE GRIT 563**
JT1015
MISS GEIGER 2649/6

LOGAN 62M27
MISS CJ 634 634
TRIPLE THREAT 1503/7
CHRK 1658U 1658U

L2 CAPTAIN SUGAR 12/02
OASIS 655
CAVALIER 19/5
L2 MAIDEN LADY 154/00

	EXPECTED PROGENY DIFFERENCES								ULTRASOUND EPDs				INDEXES			INDIVIDUAL PERFORMANCE RECORDS									
	CE	BW	WW	YW	MILK	MCE	MWWT	SC	STAY	AFC	REA	%IMF	FAT	\$T	\$M	FE\$		BW	WW	YW	SC	REA	IMF	RIB FT	RUMP FT
EPD	3.45	1	25	30	6	3.58	18.45	0.18	-2.94	-0.47	-0.16	0.04	-0.02	66.45	14.77	6.02	ADJ TRAIT	74							
ACC	0.08	0.27	0.23	0.21	0.11	0.02		0.13	0.05	0.02	0.16	0.17	0.15				RATIO								
%RK	55	75	60	70	95	20	80	80	90	75	90	40	>95	70	65	95	Contmo	1							

A and W 2174 goes back to one of, if not, the best cow families. The Miss Geiger, Maiden Lady and Infinite Lady line is exceptional. These cattle are well uddered and very predictable. Don't snooze here.

18

JT 292 ET

DNA# NE04601618

J & T FARM
Polled Exposed

ID **JT 292 ET**
BBU NO **C1195915**
SEX **Female**
DOB **2/13/24**
COLOR **Brindle**
BREEDER **J & T FARM**
EXPOSED TO: LET'R RIP
C1158388

SIRE **CJ'S JUSTICE J100**
CJ'S GAME DAY 28/16
CHRK MILKY WAY 1863X

DAM **CAVALIER 19/5**
JT WICKED WITCH CLONE I 7/04-1
WITCHY WOMAN 43/01

BLACK GOLD 27
CJ'S DARK SECRET 01-8
CHRK GENESIS 1500T 1500T
721T10

SPARTACUS 86/653
1-5/5
SYNERGY 84/95
VANNA 2000 45/00

EXPECTED PROGENY DIFFERENCES									ULTRASOUND EPDs				INDEXES			INDIVIDUAL PERFORMANCE RECORDS									
	CE	BW	WW	YW	MILK	MCE	MWWT	SC	STAY	AFC	REA	%IMF	FAT	\$T	\$M	FE\$	ADJ TRAIT	BW	WW	YW	SC	REA	IMF	RIB FT	RUMP FT
EPD	2.29	2	48	69	10	2.47	33.52	0.72	2.23	0.16	0.19	0.31	-0.01	136.78	25.17	21.67		63	634	1028		10.54	5.42	0.35	0.48
ACC	0.09	0.37	0.38	0.46	0.15	0.03		0.25	0.08	0.03	0.48	0.54	0.47				RATIO	110	118	111		110	124	110	108
%RK	85	>95	5	4	35	90	4	35	30	95	60	3	>95	3	20	15	Contmp	18	8	8		8	8	8	8

Gameday and Wicked Witch progeny are consistent and good. JT 292 is slick polled and powerful with a great phenotype. Her carcass numbers are not too shabby either. She has a 5.42 IMF with over an inch of REA/CWT. It's hard to find a female like this.

19

TT 33

DNA# NE04601470

TT BEEFMASTERS
Polled Exposed

ID **TT 33**
BBU NO **C1192016**
SEX **Female**
DOB **2/11/24**
COLOR **Light Red**
BREEDER **TT BEEFMASTERS**
EXPOSED TO: LET'R RIP
C1158388

SIRE **CJ'S JUSTICE J100**
CJ'S GAME DAY 28/16
CHRK MILKY WAY 1863X

DAM **PAINTED TIGER 3-390**
WICKED TIGER JT/805
WICKED WITCH 7/04

BLACK GOLD 27
CJ'S DARK SECRET 01-8
CHRK GENESIS 1500T 1500T
721T10

PAINTED WARRIOR 0026
1-126
CAVALIER 19/5
WITCHY WOMAN 43/01

EXPECTED PROGENY DIFFERENCES										ULTRASOUND EPDs				INDEXES			INDIVIDUAL PERFORMANCE RECORDS									
	CE	BW	WW	YW	MILK	MCE	MWWT	SC	STAY	AFC	REA	%IMF	FAT	\$T	\$M	FE\$	ADJ TRAIT	BW	WW	YW	SC	REA	IMF	RIB FT	RUM FT	
EPD	0.81	1.8	38	57	11	2.2	29.93	0.6	0.51	-0.22	0.03	0.05	-0.02	112.75	20.36	19.59		65	621	1021		10.25	4.98	0.36	0.5	
ACC	0.09	0.36	0.35	0.34	0.16	0.03		0.23	0.08	0.03	0.3	0.3	0.29				RATIO									
%RK	>95	95	20	15	20	95	15	40	50	85	75	35	85	15	40	25	Contmp	1	1	1		1	1	1	1	

TT 33 is a baby doll. She is dog gentle and stacked with breed greats. She is slick polled, loaded with bone and has a great phenotype. She will be well uddered and is loaded with performance. She has a 4.98 IMF and over an inch of REA/CWT. Don't miss this one.

20

JT 291 ET
 DNA# NE04601619

J & T FARM

 Polled
 Exposed

 ID **JT 291 ET**
 BBU NO **C1195914**
 SEX **Female**
 DOB **2/11/24**
 COLOR **Red**
 BREEDER **J & T FARM**

 SIRE
 CJ'S GAME DAY 28/16

 CJ'S JUSTICE J100
 CHRK MILKY WAY 1863X

 BLACK GOLD 27
 CJ'S DARK SECRET 01-8
 CHRK GENESIS 1500T 1500T
 721T10

 DAM
 CF ALEXA 7348

 CF SUGAR BRITCHES 040
 DIAMOND MAIDEN 1931/4

 L2 CAPTAIN SUGAR 12/02
 OASIS 655
 CAVALIER 19/5
 L2 MAIDEN LADY 154/00

 EXPOSED TO: LET'R RIP
 C1158388

EXPECTED PROGENY DIFFERENCES										ULTRASOUND EPDs				INDEXES			INDIVIDUAL PERFORMANCE RECORDS									
	CE	BW	WW	YW	MILK	MCE	MWWT	SC	STAY	AFC	REA	%IMF	FAT	\$T	\$M	FE\$		BW	WW	YW	SC	REA	IMF	RIB FT	RUMP FT	
EPD	2.3	2.5	59	84	10	2.24	39.65	1.13	-2.28	-0.94	0.49	0.37	0.01	165.12	31.89	23	ADJ TRAIT	67	678	1152		12.61	5.74	0.5	0.85	
ACC	0.09	0.37	0.38	0.47	0.16	0.04		0.25	0.07	0.04	0.48	0.54	0.47				RATIO	104	126	124		132	132	157	190	
%RK	85	>95	1	1	35	95	1	10	85	40	25	2	>95	1	5	10	Contmp	18	8	8		8	8	8	8	

JT 291 is one nice female. Her breeding insures success. Alexa seems to never miss and neither does Game Day. Alexa goes back to Maiden Lady and Infinite Lady. Check out the production from Game Day's sisters in CJ's program. JT 291 is good in every way. Her conformation is as good as her performance. That's saying a lot since she has a 5.74 IMF and over an inch of REA/CWT. This is a can't miss opportunity.

21

JT 1124
 DNA# NE04601615

J & T FARM

 Polled
 Exposed

 ID **JT 1124**
 BBU NO **C1192003**
 SEX **Female**
 DOB **2/10/24**
 COLOR **Red**
 BREEDER **J & T FARM**

 SIRE
 CJ'S GAME DAY 28/16

 CJ'S JUSTICE J100
 CHRK MILKY WAY 1863X

 BLACK GOLD 27
 CJ'S DARK SECRET 01-8
 CHRK GENESIS 1500T 1500T
 721T10

 DAM
 JT3716 JT3716

 JT TRUE GRIT 563
 TFS 616 616

 L2 CAPTAIN SUGAR 12/02
 OASIS 655
 BLACK JACK 21
 POLLY ANNA 8/1

 EXPOSED TO: LET'R RIP
 C1158388

EXPECTED PROGENY DIFFERENCES									ULTRASOUND EPDs					INDEXES			INDIVIDUAL PERFORMANCE RECORDS									
	CE	BW	WW	YW	MILK	MCE	MWWT	SC	STAY	AFC	REA	%IMF	FAT	\$T	\$M	FE\$		BW	WW	YW	SC	REA	IMF	RIB FT	RUMP FT	
EPD	1.47	2.1	46	69	10	3.05	32.98	0.79	-1.46	-0.97	0.13	0.2	-0.02	134.77	23.26	21.42	ADJ TRAIT	67	524	926		9.88	4.15	0.33	0.62	
ACC	0.15	0.45	0.4	0.4	0.14	0.03		0.22	0.05	0.03	0.38	0.43	0.37				RATIO	95	102	109		98	107	100	111	
%RK	95	>95	10	4	35	50	10	30	75	40	65	10	85	4	25	15	Contmp	4	2	2		2	2	2	2	

JT 1124 has excelled in growth. Her dam continues producing good ones year after year. This female is polled, smooth, and predictable. Her dam is well uddered at 9 years old. You can't fault this girl's performance either. She has a 4.15 IMF with over an inch of REA/CWT.

22

JT 293 ET
 DNA# NE04601616

J & T FARM

 Polled
 Exposed

 ID **JT 293 ET**
 BBU NO **C1195916**
 SEX **Female**
 DOB **2/10/24**
 COLOR **Brindle**
 BREEDER **J & T FARM**

 SIRE
 CJ'S GAME DAY 28/16

 CJ'S JUSTICE J100
 CHRK MILKY WAY 1863X

 BLACK GOLD 27
 CJ'S DARK SECRET 01-8
 CHRK GENESIS 1500T 1500T
 721T10

 DAM
 JT WICKED WITCH CLONE 17/04-1

 CAVALIER 19/5
 WITCHY WOMAN 43/01

 SPARTACUS 86/653
 1-5/5
 SYNERGY 84/95
 VANNA 2000 45/00

 EXPOSED TO: LET'R RIP
 C1158388

EXPECTED PROGENY DIFFERENCES										ULTRASOUND EPDs				INDEXES			INDIVIDUAL PERFORMANCE RECORDS									
	CE	BW	WW	YW	MILK	MCE	MWWT	SC	STAY	AFC	REA	%IMF	FAT	\$T	\$M	FE\$		BW	WW	YW	SC	REA	IMF	RIB FT	RUMP FT	
EPD	2.29	2.8	56	82	10	2.47	37.61	0.94	2.23	0.16	0.32	0.24	0.01	159.5	27.77	25.65	ADJ TRAIT	65	692	1171		11.92	4.73	0.63	0.44	
ACC	0.09	0.37	0.38	0.46	0.15	0.03		0.25	0.08	0.03	0.48	0.54	0.47				RATIO	107	128	126		125	108	198	99	
%RK	85	>95	1	1	35	90	1	20	30	95	45	10	>95	1	10	5	Contmp	18	8	8		8	8	8	8	

JT 293 is one more powerful female. This mating just works. She has bone, phenotype and everything else. This polled lady is also loaded with performance. She had a 4.13 IMF and over an inch of REA/CWT. This mating will work well with most anything. Buy her with confidence.

23

JT 290 ET
 DNA# NE04601617

J & T FARM

 Polled
 Exposed

 ID **JT 290 ET**
 BBU NO **C1195913**
 SEX **Female**
 DOB **2/10/24**
 COLOR **Black**
 BREEDER **J & T FARM**
 EXPOSED TO: LET'R RIP
C1158388

 SIRE
 CJ'S GAME DAY 28/16
 CJ'S JUSTICE J100
 CHRK MILKY WAY 1863X
 DAM
 CF ALEXA 7348
 CF SUGAR BRITCHES 040
 DIAMOND MAIDEN 1931/4

 BLACK GOLD 27
 CJ'S DARK SECRET 01-8
 CHRK GENESIS 1500T 1500T
 721T10
 L2 CAPTAIN SUGAR 12/02
 OASIS 655
 CAVALIER 19/5
 L2 MAIDEN LADY 154/00

	EXPECTED PROGENY DIFFERENCES								ULTRASOUND EPDs				INDEXES			INDIVIDUAL PERFORMANCE RECORDS									
	CE	BW	WW	YW	MILK	MCE	MWWT	SC	STAY	AFC	REA	%IMF	FAT	\$T	\$M	FE\$		BW	WW	YW	SC	REA	IMF	RIB FT	RUMP FT
EPD	2.3	1.9	52	73	10	2.24	36.06	0.93	-2.28	-0.94	0.18	0.19	0	142.85	29.61	19.5	ADJ TRAIT	64	622	1021		10.15	4.6	0.52	0.87
ACC	0.09	0.37	0.38	0.47	0.16	0.04		0.25	0.07	0.04	0.48	0.54	0.47				RATIO	108	115	110		106	105	164	195
%RK	85	95	2	2	35	95	2	20	85	40	60	15	>95	2	10	25	Contmp	18	8	8		8	8	8	8

How about a black polled female out of Alexa? This is a pretty heifer. She is just like her red sister (JT 291) but is in a black package. This polled female has a 4.6 IMF and over an inch of REA/CWT. If you are looking for a great black polled heifer, here she is.

24

JT 289 ET
 DNA# NE04601472

J & T FARM

 Polled
 Exposed

 ID **JT 289 ET**
 BBU NO **C1195912**
 SEX **Female**
 DOB **1/2/24**
 COLOR **Red**
 BREEDER **J & T FARM**
 EXPOSED TO: LET'R RIP
C1158388

 SIRE
 CJ'S GAME ON 30/15
 CJ'S JUSTICE J100
 006-7
 DAM
 A & W 1042 1042
 CF BROCK 450/3 450/3
 660

 BLACK GOLD 27
 CJ'S DARK SECRET 01-8
 CJ'S SOUL MAN 168
 CJ'S DARK SECRET 01-8
 VISION 905 905/7
 RED ESSENCE 129/07
 L2 CAPTAIN SUGAR 12/02
 OASIS 655

EXPECTED PROGENY DIFFERENCES										ULTRASOUND EPDs				INDEXES			INDIVIDUAL PERFORMANCE RECORDS									
	CE	BW	WW	YW	MILK	MCE	MWWT	SC	STAY	AFC	REA	%IMF	FAT	\$T	\$M	FE\$	ADJ TRAIT	BW	WW	YW	SC	REA	IMF	RIB FT	RUMP FT	
EPD	5.37	-1.8	35	35	8	2.38	25.11	0.87	-3.76	-0.48	-0.44	-0.12	-0.07	71	33.06	3.13		74	420	746		6.99	3.58	0.15	0.23	
ACC	0.08	0.34	0.38	0.46	0.16	0.04		0.3	0.07	0.04	0.48	0.54	0.47				RATIO	94	78	81		73	82	47	52	
%RK	15	4	25	55	75	90	40	25	95	70	>95	85	1	60	4	>95	Contmp	18	8	8		8	8	8	8	

JT 289 is awfully complete. She's red, polled, and has a superior cut. She is also out of some of the best cattle in the beefmaster breed like Brock, Captain Sugar, Oasis, and Game On. Her performance numbers are above average as well with a 3.58 IMF. It's hard to make them better.

25

JT 288 ET
 DNA# NE04601474

J & T FARM

 Polled
 Exposed

 ID **JT 288 ET**
 BBU NO **C1195911**
 SEX **Female**
 DOB **1/2/24**
 COLOR **Red**
 BREEDER **J & T FARM**
 EXPOSED TO: LET'R RIP
C1158388

 SIRE
 CJ'S GAME ON 30/15
 CJ'S JUSTICE J100
 006-7
 DAM
 A & W 1042 1042
 CF BROCK 450/3 450/3
 660

 BLACK GOLD 27
 CJ'S DARK SECRET 01-8
 CJ'S SOUL MAN 168
 CJ'S DARK SECRET 01-8
 VISION 905 905/7
 RED ESSENCE 129/07
 L2 CAPTAIN SUGAR 12/02
 OASIS 655

EXPECTED PROGENY DIFFERENCES									ULTRASOUND EPDs				INDEXES			INDIVIDUAL PERFORMANCE RECORDS									
	CE	BW	WW	YW	MILK	MCE	MWWT	SC	STAY	AFC	REA	%IMF	FAT	\$T	\$M	FE\$	ADJ TRAIT	BW	WW	YW	SC	REA	IMF	RIB FT	RUMP FT
EPD	5.37	-1.6	37	39	8	2.38	26.29	0.94	-3.76	-0.48	-0.37	-0.15	-0.07	77.03	33.81	4.28		71	436	792		7.61	3.38	0.11	0.14
ACC	0.08	0.34	0.38	0.46	0.16	0.04		0.3	0.07	0.04	0.48	0.54	0.47				RATIO	98	81	85		80	77	35	31
%RK	15	5	20	50	75	90	30	20	95	70	>95	90	1	55	3	>95	Contmp	18	8	8		8	8	8	8

Here is the same song but different verse. JT 288 is dark red and polled with plenty of bone. These embryo sisters have performance and predictability on both sides of their pedigree. She has a satisfactory carcass as well as a 3.38 IMF. This mating is obviously consistent.

26

JT 287 ET
 DNA# NE04601473

J & T FARM

 Polled
 Exposed

 ID **JT 287 ET**
 BBU NO **C1195910**
 SEX **Female**
 DOB **1/2/24**
 COLOR **Red**
 BREEDER **J & T FARM**

 EXPOSED TO: LET'R RIP
 C1158388

 SIRE
 CJ'S GAME ON 30/15

CJ'S JUSTICE J100

006-7

BLACK GOLD 27

CJ'S DARK SECRET 01-8

CJ'S SOUL MAN 168

CJ'S DARK SECRET 01-8

 DAM
 A & W 1042 1042

CF BROCK 450/3 450/3

660

VISION 905 905/7

RED ESSENCE 129/07

L2 CAPTAIN SUGAR 12/02

OASIS 655

	EXPECTED PROGENY DIFFERENCES								ULTRASOUND EPDs				INDEXES			INDIVIDUAL PERFORMANCE RECORDS									
	CE	BW	WW	YW	MILK	MCE	MWWT	SC	STAY	AFC	REA	%IMF	FAT	\$T	\$M	FE\$		BW	WW	YW	SC	REA	IMF	RIB FT	RUMP FT
EPD	5.37	-1.7	37	38	8	2.38	26.03	0.92	-3.76	-0.48	-0.29	-0.13	-0.07	75.9	33.65	4.03	ADJ TRAT	68	432	782		8.38	3.41	0.13	0.22
ACC	0.08	0.34	0.38	0.46	0.16	0.04		0.3	0.07	0.04	0.48	0.54	0.47				RATIO	103	80	84		88	78	41	49
%RK	15	4	20	50	75	90	30	20	95	70	>95	85	1	55	3	>95	Contmp	18	8	8		8	8	8	8

Consistency, consistency. These sisters are like peas in a pod. From polled to phenotype to carcass, these heifers are super similar. JT 281 has a 3.41 IMF with over an inch of REA/CWT. Someone needs to wrap these ladies up.

27

JT 276 ET
 DNA# NE04029441

J & T FARM

 Horned
 Bred

 ID **JT 276 ET**
 BBU NO **C1190900**
 SEX **Female**
 DOB **12/6/23**
 COLOR **Red**
 BREEDER **J & T FARM**

 BRED TO: JT NIGHTFALL
 C1167205

 SIRE
 LYSSY'S TONTO 26/96

LYSSY'S PINNACLE 92/465

21/33

MAVERICK 17/557

OASIS II - CLONE 969

cf FRENCH CONNECTION 142

SHIRI 448/8

 DAM
 CF ALEXA 7348

CF SUGAR BRITCHES 040

DIAMOND MAIDEN 1931/4

L2 CAPTAIN SUGAR 12/02

OASIS 655

CAVALIER 19/5

L2 MAIDEN LADY 154/00

EXPECTED PROGENY DIFFERENCES									ULTRASOUND EPDs				INDEXES			INDIVIDUAL PERFORMANCE RECORDS									
	CE	BW	WW	YW	MILK	MCE	MWWT	SC	STAY	AFC	REA	%IMF	FAT	\$T	\$M	FE\$	ADJ TRAIT	BW	WW	YW	SC	REA	IMF	RIB FT	RUMP FT
EPD	3.55	0.2	42	53	8	2.04	28.91	1.04	-4.2	-0.88	0.1	-0.11	-0.03	103.24	29.64	8.19		73	561	1002		12.58	2.39	0.35	0.51
ACC	0.29	0.45	0.46	0.53	0.22	0.18		0.39	0.19	0.18	0.53	0.59	0.52				RATIO	96	94	98		98	68	86	96
%RK	50	45	15	20	75	>95	20	15	>95	45	70	85	50	25	10	90	Contmp	18	9	7		7	7	7	7

These Tonto and Alexa sisters are also very consistent. JT 276 has power, bone, phenotype, and you can already see the perfect udder. Don't forget, Alexa is out of the Maiden Lady, Infinite Lady cow family, and there is none better. This cow family makes it easy.

28

JT 274 ET
 DNA# NE04029388

J & T FARM

 Horned
 Bred

 ID **JT 274 ET**
 BBU NO **C1190899**
 SEX **Female**
 DOB **12/3/23**
 COLOR **Red**
 BREEDER **J & T FARM**

 BRED TO: JT NIGHTFALL
 C1167205

 SIRE
 LYSSY'S TONTO 26/96

LYSSY'S PINNACLE 92/465

21/33

MAVERICK 17/557

OASIS II - CLONE 969

cf FRENCH CONNECTION 142

SHIRI 448/8

 DAM
 CF ALEXA 7348

CF SUGAR BRITCHES 040

DIAMOND MAIDEN 1931/4

L2 CAPTAIN SUGAR 12/02

OASIS 655

CAVALIER 19/5

L2 MAIDEN LADY 154/00

EXPECTED PROGENY DIFFERENCES									ULTRASOUND EPDs				INDEXES			INDIVIDUAL PERFORMANCE RECORDS									
	CE	BW	WW	YW	MILK	MCE	MWWT	SC	STAY	AFC	REA	%IMF	FAT	\$T	\$M	FE\$	ADU TRAIT	BW	WW	YW	SC	REA	IMF	RIB FT	RUM FT
EPD	3.95	-0.1	44	52	8	2.3	29.83	1.13	-5.09	-0.89	0.06	-0.06	-0.03	103.19	33.12	6.46		71	615	962		11.66	2.62	0.43	0.6
ACC	0.29	0.45	0.46	0.53	0.22	0.18		0.39	0.19	0.18	0.53	0.59	0.52				RATIO	98	103	95		91	74	106	113
%RK	40	35	10	25	75	95	15	10	>95	45	75	70	50	25	4	95	Contmg	18	9	7		7	7	7	7

JT 274 is just like her sisters. She has bone, thickness, a great phenotype and a perfect udder. I don't know what else to say, but Alexa just produces. It's hard to argue against the consistency of this mating. This lady just needs putting in production.

29

JT 278 ET
 DNA# NEO4029445

J & T FARM

Horned Bred

 ID **JT 278 ET**
 BBU NO **C1190901**
 SEX **Female**
 DOB **12/4/23**
 COLOR **Red**
 BREEDER **J & T FARM**
 BRED TO: **JT NIGHTFALL**
C1167205

 SIRE **LYSSY'S PINNACLE 92/465**
LYSSY'S TONTO 26/96
 21/33
 DAM **CF SUGAR BRITCHES 040**
CF ALEXA 7348
 DIAMOND MAIDEN 1931/4
 MAVERICK 17/557
 OASIS II - CLONE 969
 cf FRENCH CONNECTION 142
 SIIRI 448/8
 L2 CAPTAIN SUGAR 12/02
 OASIS 655
 CAVALIER 19/5
 L2 MAIDEN LADY 154/00

	EXPECTED PROGENY DIFFERENCES								ULTRASOUND EPDs				INDEXES			INDIVIDUAL PERFORMANCE RECORDS									
	CE	BW	WW	YW	MILK	MCE	MWWT	SC	STAY	AFC	REA	%IMF	FAT	\$T	\$M	FE\$		BW	WW	YW	SC	REA	IMF	RIB FT	RUMP FT
EPD	3.96	0.3	47	58	7	2.27	30.68	1.18	-3.72	-1.01	0.24	-0.12	-0.04	112.77	31.94	9.28	ADJ TRAIT	74	563	1088		12.8	2.59	0.27	0.55
ACC	0.29	0.45	0.46	0.53	0.22	0.18		0.39	0.19	0.18	0.53	0.59	0.52				RATIO	94	94	107		100	73	67	103
%RK	40	50	5	15	85	95	10	10	95	35	55	85	15	15	4	85	Contmp	18	9	7		7	7	7	7

Have you noticed Alexa never misses? These great cow families pass down these great traits. Phenotype, power, bone, and a great udder should be the goal, and this cow family delivers.

30

JT 284 ET
 DNA# NEO4601476

J & T FARM

Polled Bred

 ID **JT 284 ET**
 BBU NO **C1195907**
 SEX **Female**
 DOB **11/4/23**
 COLOR **Red**
 BREEDER **J & T FARM**
 BRED TO: **LET'R RIP**
C1158388

 SIRE **CJ'S JUSTICE J100**
CJ'S GAME ON 30/15
 006-7
 DAM **L2 CAPTAIN SUGAR 12/02**
660
 OASIS 655
 BLACK GOLD 27
 CJ'S DARK SECRET 01-8
 CJ'S SOUL MAN 168
 CJ'S DARK SECRET 01-8
 INFINITY 120/96
 SUGAR ANN 45/6
 CAVALIER 19/5
 SEX LIFE 388

EXPECTED PROGENY DIFFERENCES									ULTRASOUND EPDs					INDEXES			INDIVIDUAL PERFORMANCE RECORDS									
	CE	BW	WW	YW	MILK	MCE	MWWT	SC	STAY	AFC	REA	%IMF	FAT	\$T	\$M	FE\$		BW	WW	YW	SC	REA	IMF	RIB FT	RUMP FT	
EPD	4.49	-0.1	47	58	8	1.98	32	1.11	-4.49	-1.01	-0.13	0.12	-0.05	114.37	34.23	10.23	ADJ TRAIT	70	577	949		9.76	4.19	0.16	0.41	
ACC	0.1	0.39	0.41	0.47	0.2	0.05		0.33	0.1	0.05	0.47	0.51	0.46				RATIO	104	103	105		99	144	96	92	
%RK	30	35	5	15	75	>95	10	10	>95	35	90	20	2	15	3	80	Contmp	8	3	3		3	3	3	3	

JT284 is one beast of a female. It will be a challenge to produce one better. She looks to have it all. She is polled, pretty, and powerful while still being feminine. Game On mated with a flushmate to Sugar Britches knocked it out of the park. She had a 4.19 IMF for your cherry on top.

31

JT 285 ET
 DNA# NEO4601475

J & T FARM

Polled Bred

 ID **JT 285 ET**
 BBU NO **C1195908**
 SEX **Female**
 DOB **11/4/23**
 COLOR **Red**
 BREEDER **J & T FARM**
 BRED TO: **LET'R RIP**
C1158388

 SIRE **CJ'S JUSTICE J100**
CJ'S GAME CHANGER 1316
 BRINDLE BABY OF SOUL 7222
 DAM **L2 CAPTAIN SUGAR 12/02**
660
 OASIS 655
 BLACK GOLD 27
 CJ'S DARK SECRET 01-8
 CJ'S SOUL MAN 168
 TIGER BABY 684
 INFINITY 120/96
 SUGAR ANN 45/6
 CAVALIER 19/5
 SEX LIFE 388

EXPECTED PROGENY DIFFERENCES									ULTRASOUND EPDs				INDEXES			INDIVIDUAL PERFORMANCE RECORDS									
	CE	BW	WW	YW	MILK	MCE	MWWT	SC	STAY	AFC	REA	%IMF	FAT	\$T	\$M	FE\$	ADJ TRAIT	BW	WW	YW	SC	REA	IMF	RIB FT	RUM FT
EPD	4.43	-0.8	41	56	6	2.11	26.31	0.97	-5.97	-1.12	0	-0.03	-0.04	110.47	24.69	11.07	ADJ TRAIT	73	526	829		9.65	2.13	0.16	0.37
ACC	0.1	0.41	0.42	0.48	0.27	0.05		0.34	0.14	0.05	0.47	0.51	0.46				RATIO	100	94	92		97	73	96	83
%RK	30	15	15	15	95	>95	30	20	>95	30	80	60	15	15	20	75	Contmp	8	3	3		3	3	3	3

JT 285 is powerful and loaded with muscle. She's polled and out of the same predictable cattle as JT 284. This female is a momma cow in the making. These Game Changer daughters have sure impressed me with their consistency.

32

JT 286 ET
 DNA# NE04601477

J & T FARM
 Polled Bred

 ID **JT 286 ET**
 BBU NO **C1195909**
 SEX **Female**
 DOB **11/4/23**
 COLOR **Red**
 BREEDER **J & T FARM**
 BRED TO: **LET'R RIP**
C1158388

 SIRE **CJ'S GAME ON 30/15**
 CJ'S JUSTICE J100
 006-7
 DAM **660**
 L2 CAPTAIN SUGAR 12/02
 OASIS 655
 BLACK GOLD 27
 CJ'S DARK SECRET 01-8
 CJ'S SOUL MAN 168
 CJ'S DARK SECRET 01-8
 INFINITY 120/96
 SUGAR ANN 45/6
 CAVALIER 19/5
 SEX LIFE 388

	EXPECTED PROGENY DIFFERENCES								ULTRASOUND EPDs				INDEXES			INDIVIDUAL PERFORMANCE RECORDS									
	CE	BW	WW	YW	MILK	MCE	MWWT	SC	STAY	AFC	REA	%IMF	FAT	\$T	\$M	FE\$		BW	WW	YW	SC	REA	IMF	RIB FT	RUMP FT
EPD	4.49	-0.2	46	56	8	1.98	31.41	1.07	-4.49	-1.01	-0.11	-0.13	-0.05	107.89	33.86	9.66	ADJ TRAIT	72	573	927		10.3	2.38	0.18	0.56
ACC	0.1	0.39	0.41	0.47	0.2	0.05		0.33	0.1	0.05	0.47	0.51	0.46				RATIO	101	103	103		104	82	108	125
%RK	30	30	10	15	75	>95	10	15	>95	35	90	85	2	20	3	85	Contmp	8	3	3		3	3	3	3

JT 286 is long, smooth, and feminine with yet plenty of thickness. She has great cow families on top and bottom with lots of consistency. With the few matings I've done, I think Game On might be more predictable than Game Changer. Either way, these females will work.

33

JT 264 ET
 DNA# NE04601600

J & T FARM
 Horned Bred

 ID **JT 264 ET**
 BBU NO **C1192663**
 SEX **Female**
 DOB **10/21/23**
 COLOR **Red**
 BREEDER **J & T FARM**
 BRED TO: **JT NIGHTFALL**
C1167205

 SIRE **L2 MAX L2139/09**
 L2 CAPTAIN JACK 43/07
 INFINITE LADY 79/98
 DAM **JT ABRACADABRA JT3**
 CF SUGAR BRITCHES 040
 WICKED WITCH 7/04
 L2 CAPTAIN LUCEY 116/01
 FARRAH ANNA 42/9
 INFINITY 120/96
 MISS JUDY 6/91
 L2 CAPTAIN SUGAR 12/02
 OASIS 655
 CAVALIER 19/5
 WITCHY WOMAN 43/01

EXPECTED PROGENY DIFFERENCES										ULTRASOUND EPDs				INDEXES			INDIVIDUAL PERFORMANCE RECORDS									
	CE	BW	WW	YW	MILK	MCE	MWWT	SC	STAY	AFC	REA	%IMF	FAT	\$T	\$M	FE\$		BW	WW	YW	SC	REA	IMF	RIB FT	RUMP FT	
EPD	2.87	0.8	19	21	8	3.25	17.81	-0.14	-2.38	-0.76	-0.08	0.08	-0.01	52.05	13.82	6.63	ADJ TRAIT	78	625	841		11.06	3.69	0.56	0.61	
ACC	0.3	0.47	0.48	0.53	0.27	0.18		0.37	0.22	0.18	0.52	0.58	0.5				RATIO	93	98	87		101	109	104	96	
%RK	70	70	80	90	75	35	80	>95	85	55	85	30	>95	85	70	95	Contmp	8	4	4		4	4	4	4	

Abracadabra was lost too soon, but she still left her mark. She was similar to Alexa, but she had better performance. On every ranch visit, Bruce would spot her and ask, "Who is that?" Adding Max brings in the great Infinite Lady cow family. These lines just work! 3.69 IMF with a big ribeye.

34

JT 267 ET
 DNA# NE04601605

J & T FARM
 Polled Bred

 ID **JT 267 ET**
 BBU NO **C1192662**
 SEX **Female**
 DOB **10/19/23**
 COLOR **Red**
 BREEDER **J & T FARM**
 BRED TO: **JT NIGHTFALL**
C1167205

 SIRE **JACKPOT 2/927**
 BLACK JACK 21
 MISS STACI 927
 DAM **WICKED WITCH 7/04**
 CAVALIER 19/5
 WITCHY WOMAN 43/01
 BLACK MAGIC 120/97
 MISS SCARLET USA 8-1
 CF'S GRAND CHEROKEE 346
 C J'S MISS AWESOME 646
 SPARTACUS 86/653
 1-5/5
 SYNERGY 84/95
 VANNA 2000 45/00

EXPECTED PROGENY DIFFERENCES										ULTRASOUND EPDs				INDEXES			INDIVIDUAL PERFORMANCE RECORDS									
	CE	BW	WW	YW	MILK	MCE	MWWT	SC	STAY	AFC	REA	%IMF	FAT	\$T	\$M	FE\$	ADJ TRAIT	BW	WW	YW	SC	REA	IMF	RIB FT	RUMP FT	
EPD	1.16	3.3	30	43	6	3.55	20.75	0.11	1.41	0.49	-0.02	-0.17	-0.02	85.58	9.97	22.48		72	681	1163		11.77	3.25	0.56	0.71	
ACC	0.3	0.5	0.51	0.54	0.35	0.19		0.39	0.26	0.19	0.53	0.58	0.52				RATIO	101	106	120		107	96	104	112	
%RK	95	>95	40	40	95	20	60	85	40	>95	80	95	85	45	90	15	Contmp	8	4	4		4	4	4	4	

This is one of my favorite matings. Jackpot on Witch never misses. JT 267 is slick polled and is absolutely stunning. She will have the prettiest udder, and it will last. She has a 3.25 IMF and over an inch of REA/CWT.

35

JT 3723
 DNA# NEO4601601

J & T FARM

Polled

Bred

 ID **JT 3723**
 BBU NO **C1189439**
 SEX **Female**
 DOB **9/1/23**
 COLOR **Red**
 BREEDER **J & T FARM**
 BRED TO: **JT NIGHTFALL**
C1167205

 SIRE
CJ'S JUSTICE J100
CJ'S GAME DAY 28/16
 CHRK MILKY WAY 1863X
 DAM
CF LIMITED EDITION 861/3
JT2817 JT2817
 RM CARRIE 15/4

 BLACK GOLD 27
 CJ'S DARK SECRET 01-8
 CHRK GENESIS 1500T 1500T
 721T10
 VMAX 649/1
 1845/3
 BULLET PROOF 864
 EMS HEARTACHE 38

EXPECTED PROGENY DIFFERENCES										ULTRASOUND EPDs				INDEXES			INDIVIDUAL PERFORMANCE RECORDS									
	CE	BW	WW	YW	MILK	MCE	MWWT	SC	STAY	AFC	REA	%IMF	FAT	\$T	\$M	FE\$	ADJ TRAIT	BW	WW	YW	SC	REA	IMF	RIB FT	RUMP FT	
EPD	1.66	1.6	39	58	9	2.21	28.38	0.77	-2.03	-0.29	0.24	-0.02	-0.04	112.67	20.14	19.22		72	608	696		8.11	2.73	0.13	0.44	
ACC	0.29	0.42	0.41	0.41	0.16	0.17		0.31	0.17	0.17	0.39	0.43	0.38				RATIO									
%RK	95	90	20	15	55	95	25	30	80	80	55	55	15	15	40	25	Contmp	1	1	1		1	1	1	1	

JT 3723 is cherry red, slick polled, and out of a good cow. This girl's dam has produced four good ones in a row. This female will go out and do you a good job. Her dam has a perfect udder and is super gentle.

36

JT3423
 DNA# NEO4601603

J & T FARM

Polled

Bred

 ID **JT3423**
 BBU NO **C1183595**
 SEX **Female**
 DOB **8/20/23**
 COLOR **Red**
 BREEDER **J & T FARM**
 BRED TO: **JT NIGHTFALL**
C1167205

 SIRE
THE ROCK JT 817
JT MACHO MAN JT3321
 JT105
 DAM
CF SUGAR BRITCHES 040
JT JT158 JT158
 JT/5761

 HIGH VELOCITY 61/11
 JT FIRST LADY 5/12
 CJ'S LOVE MAKER 1420
 JT MADAM SECRETARY 659
 L2 CAPTAIN SUGAR 12/02
 OASIS 655
 CF DR. LOVE 414
 LADY SUPERIOR 670

	EXPECTED PROGENY DIFFERENCES								ULTRASOUND EPDs				INDEXES			INDIVIDUAL PERFORMANCE RECORDS											
	CE	BW	WW	YW	MILK	MCE	MWWT	SC	STAY	AFC	REA	%IMF	FAT	\$T	\$M	FE\$	ADJ TRAIT	BW	WW	YW	SC	REA	IMF	RIB FT	RUMP FT		
EPD	5.87	-0.8	19	21	8	3.55	18.13	0.2	-3.91	-1.24	-0.21	0.03	-0.04	49.81	17.68	6.5		60									
ACC	0.31	0.47	0.37	0.37	0.15	0.17		0.28	0.17	0.17	0.34	0.38	0.32				RATIO	109									
%RK	10	15	80	90	75	20	80	75	95	25	95	40	15	90	50	95	Contmp	7	1	1		1	1	1	1		

JT 3423 is a sweetheart. Her dam is one of my favorite cows. I also favor her cow family which goes back to the "8" cow. This cow family works. This girl is slick polled, strikingly pretty, and will have a great udder.

37

JT3323
 DNA# NEO4029380

J & T FARM

Horned

Bred

 ID **JT3323**
 BBU NO **C1183594**
 SEX **Female**
 DOB **8/10/23**
 COLOR **Red Star Face**
 BREEDER **J & T FARM**
 BRED TO: **JT NIGHTFALL**
C1167205

 SIRE
EMS BET ON BUBBA 507
EMS BET ON BRADY 080
 EMS QUEEN OF DREAMS 777
 DAM
SWB PETERBILT 08718
SWB MARA 03721
 866

 EMS HEADLINER 029
 EMS BET ON BUFF 8062
 EMS KING GEORGE 425
 CATCHIN A DREAM 1140
 MCALESTER 4521
 GYPSY LADY 33
 MESCALERO 306
 8255

EXPECTED PROGENY DIFFERENCES										ULTRASOUND EPDs				INDEXES			INDIVIDUAL PERFORMANCE RECORDS									
	CE	BW	WW	YW	MILK	MCE	MWWT	SC	STAY	AFC	REA	%IMF	FAT	\$T	\$M	FES	ADJ TRAIT	BW	WW	YW	SC	REA	IMF	RIB FT	RUMP FT	
EPD	3.34	0.8	36	47	9	2.42	2719	0.63	-2.57	-1.34	0.29	-0.15	-0.04	93.61	23.3	12.81		66								
ACC	0.29	0.36	0.35	0.36	0.11	0.17		0.25	0.16	0.17	0.35	0.39	0.33				RATIO									
%RK	60	70	25	30	55	90	25	40	85	20	45	90	15	35	25	65	Contmp	1	1	1		1	1	1	1	

JT 3324 has become a power female. The combination of Brady and Mara obviously worked well. If you are looking for power, bone, and thickness. This girl is for you. She's easy keeping as well as easy handling. She and nightfall should hit a home run.

38

HFBM 2310
DNA#J & T FARM
De-Horned Bred

ID HFBM 2310
BBU NO C1184275
SEX Female
DOB 7/22/23
COLOR Black White Underline
BREEDER HEMBY FARMS

BRED TO: JT NIGHTFALL
C1167205

SIRE
JT JT921 JT921

BIG TEX 5811

JT813

DAM
CIF BLONDY 521

SON OF BRITCHES BF1602

KITTY HUTTY BLONDY KH61

LYSSY 112/458 112/458

FRENZEL 0824 0824

FULL THROTTLE 172

810

CF SUGAR BRITCHES 040

RED TIGER LADY 94/06

12/5

GATOR 122/13 122/13

EXPECTED PROGENY DIFFERENCES										ULTRASOUND EPDs				INDEXES			INDIVIDUAL PERFORMANCE RECORDS									
	CE	BW	WW	YW	MILK	MCE	MWWT	SC	STAY	AFC	REA	%IMF	FAT	\$T	\$M	FE\$	ADJ TRAIT	BW	WW	YW	SC	REA	IMF	RIB FT	RUMP FT	
EPD	3.82	0.5	22	33	9	3.06	20.19	0.4	-2.11	-1.15	0	-0.07	-0.02	69.82	12.72	13.91		47	489	729		8.62	1.06	0.18	0.27	
ACC	0.06	0.21	0.18	0.17	0.07	0.02		0.09	0.03	0.02	0.15	0.15	0.14				RATIO									
%RK	45	55	70	60	55	50	70	60	80	30	80	70	85	65	75	60	Contmp	1	1	1		1	1	1	1	

2310 is a straight up powerhouse. She's got some Big Tex in her, and it shows. She's thick, broody, big boned, and has great feet. This girl is perfect for a black polled bull. The Nightfall calf in the belly should be perfect.

39

JT JT2423
DNA#COVERTSIDE
Polled Bred

ID JT JT2423
BBU NO C1169827
SEX Female
DOB 5/5/23
COLOR Red
BREEDER J & T FARM

AI TO: CJ HEART BREAKER
C1138064 (3-26-25)

SIRE
CJ'S GAME DAY 28/16

CJ'S JUSTICE J100

CHRK MILKY WAY 1863X

DAM
919

VISION 905 905/7

DESERT WINE 48/07

BLACK GOLD 27

CJ'S DARK SECRET 01-8

CHRK GENESIS 1500T 1500T

721T10

LOGAN 62M27

PENELOPE 293J11

INFINITY 120/96

RED RED WINE 67/04

	EXPECTED PROGENY DIFFERENCES								ULTRASOUND EPDs				INDEXES			INDIVIDUAL PERFORMANCE RECORDS									
	CE	BW	WW	YW	MILK	MCE	MWWT	SC	STAY	AFC	REA	%IMF	FAT	\$T	\$M	FE\$		BW	WW	YW	SC	REA	IMF	RIB FT	RUMP FT
EPD	2.96	0.7	31	43	7	2.76	22.39	0.36	-1.36	-0.14	-0.08	0.16	-0.03	90.61	16.28	15.83	ADJ TRAIT	69	519						
ACC	0.15	0.46	0.36	0.36	0.15	0.03		0.23	0.07	0.03	0.32	0.33	0.31				RATIO	92							
%RK	70	65	40	40	85	70	55	60	75	90	85	15	50	40	60	45	Contmp	4	1						

JT 2423 is out of a great new cut cow. This female should have a perfect udder due to her sire and dam. She has a good phenotype, plenty of bone and lots of performance. Game Day daughters will work.

40

A & W 3221
DNA# 62521012005J & T FARM
De-Horned Bred Cow

ID A & W 3221
BBU NO C1168141
SEX Female
DOB 3/2/21
COLOR Red
BREEDER A & W FARMS

BRED TO: JT NIGHTFALL
C1167205

SIRE
CF RIPTIDE 875/3

TABASCO 3018K10

CF RAQUEL 933/9

DAM
660

L2 CAPTAIN SUGAR 12/02

OASIS 655

RED TIGER 9075

JUNGLE SPICE 786

LOGAN 62M27

JUNGLE WHISPER 49/1

INFINITY 120/96

SUGAR ANN 45/6

CAVALIER 19/5

SEX LIFE 388

EXPECTED PROGENY DIFFERENCES										ULTRASOUND EPDs				INDEXES			INDIVIDUAL PERFORMANCE RECORDS									
	CE	BW	WW	YW	MILK	MCE	MWWT	SC	STAY	AFC	REA	%IMF	FAT	\$T	\$M	FE\$	ADJ TRAIT	BW	WW	YW	SC	REA	IMF	RIB FT	RUMP FT	
EPD	3.21	0.4	30	34	6	2.18	21.06	0.2	-5.61	-1.14	-0.07	-0.15	-0.05	69.62	20.7	8.65		71				7.82	3.91	0.19	0	
ACC	0.29	0.45	0.46	0.46	0.27	0.18		0.39	0.21	0.18	0.53	0.58	0.52				RATIO	96.3				109.5	107.1	100		
%RK	60	55	40	60	95	95	60	75	>95	30	85	90	2	65	35	90	Contmp	5				5	5	5	1	

Here is one to double star. As Bruce says, she's long as a well rope. She has the perfect angular phenotype and is backed by breed greats. As a bonus, she has almost a 4 IMF. Nightfall and this girl should hit a home run.

41

EMS BET THE BANK

DNA# 111620031131

J & T FARM

Scurred

Pair

ID EMS BET THE BANK
BBU NO C1170162
SEX Female
DOB 9/11/21
COLOR Red
BREEDER EMMONS

EXPOSED TO: JT NIGHTFALL
C1167205

CALF Polled
ID JT325
BBU NO C1197855
SEX Male
DOB 4/1/25
COLOR Brown
BREEDER J & T FARM

SIRE
LET'R RIP 3421

CJ POWER PLAY 54/17
CJ'S DIAMOND OF SOUL 509

DAM
EMS BET THE BANK

EMS BET ON BUBBA 507
EMS DREAMIN BOUT FIRE 737

INFINITY 120/96
OASIS 655
CJ'S SOUL MAN 168
MISS CJ 254
EMS HEADLINER 029
EMS BET ON BUFF 8062
BONFIRE 8038
CATCHIN A DREAM 1140

EXPECTED PROGENY DIFFERENCES										ULTRASOUND EPDs				INDEXES			INDIVIDUAL PERFORMANCE RECORDS									
	CE	BW	WW	YW	MILK	MCE	MWWT	SC	STAY	AFC	REA	%IMF	FAT	\$T	\$M	FE\$	ADJ TRAIT	BW	WW	YW	SC	REA	IMF	RIB FT	RUMP FT	
EPD	2.78	1.1	35	37	8	2.35	25.83	0.37	-2.41	-2.16	0.33	-0.18	-0.04	75.7	27.11	3.34		82	521	715		10.74	2.6	0.16	0.24	
ACC	0.29	0.46	0.46	0.53	0.23	0.18		0.34	0.2	0.18	0.54	0.59	0.52				RATIO	86.5				107	101	76	88	
%RK	65	75	15	35	75	90	20	45	80	4	30	90	15	40	10	>95	Contmp	34	1	1		8	8	8	8	

1161 is showcasing some superior show genetics. She has light scurs, good phenotype, nice bone, and perfect feet. However, the proof is at her side. The Let'r Rip bull calf is outstanding. She could be a 3-N-1 since she has been exposed to Nightfall.

42

GFF CRIMSON BLAST

DNA#

J & T FARM

Polled

Pair

ID GFF CRIMSON BLAST
BBU NO C1147180
SEX Female
DOB 2/27/21
COLOR Black
BREEDER GAILEY FARMS

CALF Polled
ID JT 425
BBU NO C1197856
SEX Male
DOB 4/10/25
COLOR Black
BREEDER J & T FARM

SIRE
LET'R RIP 3421

CJ POWER PLAY 54/17
CJ'S DIAMOND OF SOUL 509

DAM
GFF CRIMSON BLAST 425

BAYOU BLAST C7-6
GFF CRIMSON 1813

INFINITY 120/96
OASIS 655
CJ'S SOUL MAN 168
MISS CJ 254
BLACK BAYOU 1071/3
CAJUN BLAST 2C2-4
BCB RED REVOLUTION 2714
RH 1461 1461

EXPECTED PROGENY DIFFERENCES										ULTRASOUND EPDs				INDEXES			INDIVIDUAL PERFORMANCE RECORDS									
	CE	BW	WW	YW	MILK	MCE	MWWT	SC	STAY	AFC	REA	%IMF	FAT	\$T	\$M	FE\$		BW	WW	YW	SC	REA	IMF	RIB FT	RUMP FT	
EPD	7.55	-2.3	25	33	10	2.55	22.58	0.71	1.95	-0.98	0.36	0.04	-0.03	72.24	22.17	14.63	ADJ TRAIT	65	515	715						
ACC	0.16	0.47	0.36	0.32	0.17	0.04		0.17	0.07	0.04	0.27	0.29	0.25				RATIO	114.2	100	100						
%RK	2	2	40	45	40	80	35	20	30	45	30	35	55	45	20	50	Contmp	4	1	1						

212 is absolutely a perfect female. She's easy going with a perfect udder that gives plenty of milk. The Let'r Rip bull calf on her is a testament to that. As a bonus, she has been implanted with an Enforcer times Something Royal heifer embryo. We'll have palpation results at the sale.

43

SAR 22048 SECRET MAGNET

DNA#

J & T FARM

Scurred

3 N 1

ID SAR 22048 SECRET MAGNET
BBU NO C1167357
SEX Female
DOB 4/8/22
COLOR Red
BREEDER SANTA ANNA RANCH
BRED TO: JT NIGHTFALL
C1167205

CALF Polled
ID JT 3624
BBU NO C1197854
SEX Female
DOB 9/16/24
COLOR Red
BREEDER J & T FARM

SIRE
FUSION KING 07/18

CF KINGSTON 730/4
711/1

DAM
SAR 22048 SECRET MAGNET

WPR'S POLLED RED MAGNET 1890
POLLED RED SECRET JT910

LOGAN 62M27
CIRCLE C 91/5 91/5
FUSION 578/3
479/9
WPR'S CHICK MAGNET 1427
MS HOOD 828 H828
CF SUGAR BEAR 933
LADY SUPERIOR 670

EXPECTED PROGENY DIFFERENCES										ULTRASOUND EPDs				INDEXES			INDIVIDUAL PERFORMANCE RECORDS									
	CE	BW	WW	YW	MILK	MCE	MWWT	SC	STAY	AFC	REA	%IMF	FAT	\$T	\$M	F\$	ADJ TRAIT	BW	WW	YW	SC	REA	IMF	RIB FT	RUMP FT	
EPD	2.45	0.6	18	24	7	2.8	15.71	0.05	0.55	-0.83	-0.04	-0.09	-0.04	54.55	9.54	14.24		85	456	721		8.43	1.41	0.13	0.22	
ACC	0.16	0.49	0.46	0.45	0.17	0.04		0.22	0.07	0.04	0.46	0.51	0.44				RATIO	93.3	91	86		87	51	52	59	
%RK	75	55	70	75	85	70	80	75	45	55	75	70	15	75	75	55	Contmp	15	5	5		5	5	5	5	

Here is you a big 3-N-1 with a nice heifer at side. These females from Dr. Restrepo always work. This girl is no exception. She is bred back to nightfall with that nice polled baby in the belly.

44

BF1 2168
DNA# 62521016928

HEMBY FARMS & TT BEEFMASTERS
Homozygous Polled & Black 3 N 1

ID BF1 2168
BBU NO C1163724
SEX Female
DOB 11/9/21
COLOR Black
BREEDER BAILEY FARMS
BRED TO: JT NIGHTFALL
C1167205

CALF Polled
ID HFBM 2468
BBU NO C1197883
SEX Female
DOB 11/22/24
COLOR Black
BREEDER HEMBY FARMS

SIRE THE ROCK JT 817
JT MACHO MAN JT3321
JT105
DAM CJ'S GAME CHANGER 1316
BF12168
MISS CJ 1433 1433
HIGH VELOCITY 61/11
JT FIRST LADY 5/12
CJ'S LOVE MAKER 1420
JT MADAM SECRETARY 659
CJ'S JUSTICE J100
BRINDLE BABY OF SOUL 7222
CF DR. LOVE 414
MISS CJ 1025 1025

	EXPECTED PROGENY DIFFERENCES									ULTRASOUND EPDs				INDEXES			INDIVIDUAL PERFORMANCE RECORDS									
	CE	BW	WW	YW	MILK	MCE	MWWT	SC	STAY	AFC	REA	%IMF	FAT	\$T	\$M	FE\$		BW	WW	YW	SC	REA	IMF	RIB FT	RUMP FT	
EPD	5.55	-1.3	42	58	8	2.35	28.82	1.15	-1.8	-0.47	0.23	0.3	-0.02	118.11	27.92	13.98	ADJ TRAIT	70	448	824		10.85	3.18	0.25	0.38	
ACC	0.1	0.4	0.42	0.49	0.26	0.06		0.31	0.13	0.06	0.5	0.55	0.49				RATIO	100.5		97		104	101	95	95	
%RK	15	10	5	10	75	90	10	5	75	75	45	3	85	5	5	55	Contmp	11	1	4		7	7	7	7	

2168 is one of those nice homozygous polled and homozygous black Game Changer daughters. She has a slick polled Macho Man daughter at side. She is bred back to Let'r Rip. This line has great udders and do a good job.

45

NG MS SURE FIRE 409J
DNA# NE02440420

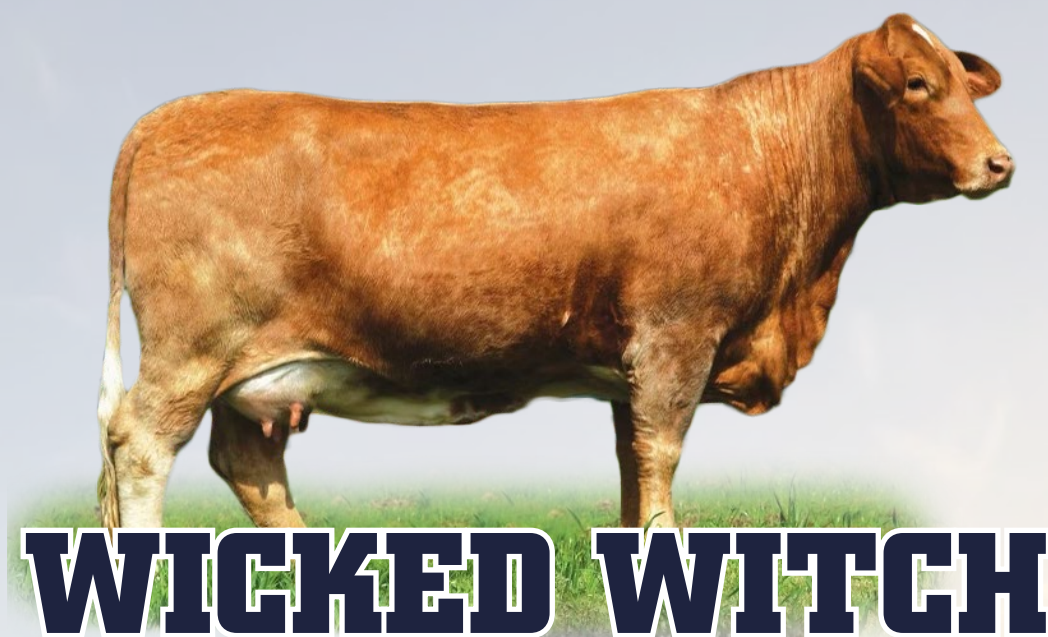
J & T FARM
Polled Bred Donor

ID NG MS SURE FIRE 409J
BBU NO C1162527
SEX Female
DOB 9/13/21
COLOR Red Mottle Underline
BREEDER NEXT GEN
BRED TO: JT NIGHTFALL
C1167205

SIRE EMS RING OF FIRE 130
CJ'S SURE FIRE 39/16
MISS CJ 1014 1014
DAM EMS HIGH PROFILE 213
CHRK MISS MILLIE 409D
CHRK DAISY MAE 2056
BONFIRE 8038
EMS COLOR ME SUGAR 811
CJ MONEYMAKER 707
MISS CJ 737 737
ACE IN THE HOLE 70/3
EMS MISS BUFF 86-6
CHRK RASIN' CAIN 1780X
1178/4

EXPECTED PROGENY DIFFERENCES										ULTRASOUND EPDs				INDEXES			INDIVIDUAL PERFORMANCE RECORDS									
	CE	BW	WW	YW	MILK	MCE	MWWT	SC	STAY	AFC	REA	%IMF	FAT	\$T	\$M	FE\$	ADJ TRAIT	BW	WW	YW	SC	REA	IMF	RIB FT	RUMP FT	
EPD	4.94	0.2	38	54	12	2.86	30.91	0.66	2.26	-1.52	0.61	0.46	0.01	114.08	25.65	16.51		59	505	932		11.91	6.96	0.59	0.79	
ACC	0.31	0.55	0.53	0.54	0.24	0.18		0.37	0.19	0.18	0.54	0.6	0.52				RATIO	117	104	102		105	152	180	147	
%RK	20	40	10	10	15	65	10	25	30	20	10	1	>95	10	10	35	Contmp	18	18	17		17	17	17	17	

409J is a really nice Sure Fire daughter. She is slick polled, perfect uddered, and boasts almost a 7 IMF. She's perfect for someone looking to produce high quality cattle with good Carcass traits. Check out her daughter out of The Rock in Lot 4.



46

JT WICKED WITCH CLONE I
DNA# NE02384930

J & T FARM
Horned Bred Donor

ID **JT WICKED WITCH CLONE I**
BBU NO **C1114530**
SEX **Female**
DOB **11/15/17**
COLOR **Light Red**
BREEDER **J & T FARM**
BRED TO: JT NIGHTFALL
C1167205

SIRE **SPARTACUS 86/653**
CAVALIER 19/5

1-5/5

DAM **SYNERGY 84/95**
WITCHY WOMAN 43/01
VANNA 2000 45/00

GLADIATOR 8/36
DREAMLADY 2C9-77
RANGER'S PRIDE 815/9
KENTUCKY PRINCESS 9039

RED SUGAR 104/93
PRISSY LADY 117/93
PHANTOM WARRIOR 3/254
MADAM X 3/293

EXPECTED PROGENY DIFFERENCES									ULTRASOUND EPDs				INDEXES			INDIVIDUAL PERFORMANCE RECORDS									
	CE	BW	WW	YW	MILK	MCE	MWWT	SC	STAY	AFC	REA	%IMF	FAT	\$T	\$M	FE\$	ADJ TRAIT	BW	WW	YW	SC	REA	IMF	RIB FT	RUMP FT
EPD	1.68	2.2	25	32	8	2.75	20.28	-0.07	2.56	0.68	-0.23	0	-0.02	69.15	13.1	13.95		75	663	915		9.72	2.58	0.28	0.36
ACC	0.33	0.59	0.57	0.6	0.39	0.21		0.44	0.31	0.21	0.64	0.69	0.63				RATIO	98	103	108		107	124	144	129
%RK	90	95	40	50	75	75	55	90	25	>95	90	45	85	50	55	55	Contmp	4	4	4		4	4	4	4

Where do I start? I hope someone is able to take this cow and jump start their program to the next level. This line was instrumental in moving our program forward. Wicked Witch can be a game changing female for someone. Her fertility and udder quality are top tier. The list of sires that she has produced stellar offspring from is too long to list. As a bonus to help create success, we are adding 2 heifer embryos each out of Painted Tiger, Sugar Britches, and Daybreak. She will be bred 5+ months to JT Nightfall. Don't let this opportunity pass you by.

47

JT 330 ET
 DNA# NE04934036

J & T FARM
Scurred Bull

 ID **JT 330 ET**
 BBU NO **C1198096**
 SEX **Male**
 DOB **5/30/24**
 COLOR **Black**
 BREEDER **J & T FARM**

SIRE CF ADRENALINE 170 INFINITY 120/96
 CJ'S DIAMOND ROLEX 15/15 OASIS 655
 CJ'S DIAMOND OF SOUL 509 CJ'S SOUL MAN 168
 MISS CJ 254 254

DAM JT3719 CJ'S DIAMOND ROLEX 15/15
 JT TIMELESS JT1921 CJ HEARTBREAK 12/17 12/17
 JT WICKED WITCH CLONE IV 7/04-4 CAVALIER 19/5
 WITCHY WOMAN 43/01

	EXPECTED PROGENY DIFFERENCES								ULTRASOUND EPDs				INDEXES			INDIVIDUAL PERFORMANCE RECORDS									
	CE	BW	WW	YW	MILK	MCE	MWWT	SC	STAY	AFC	REA	%IMF	FAT	\$T	\$M	FE\$		BW	WW	YW	SC	REA	IMF	RIB FT	RUMP FT
EPD	5.18	-0.6	42	51	9	2.2	30.2	0.83	-0.81	-0.82	0.08	0.33	-0.02	105.78	32.71	16.61	ADJ TRAIT	67	665	1110		15.29	2.65	0.19	0.28
ACC	0.29	0.41	0.41	0.43	0.19	0.17		0.36	0.18	0.17	0.4	0.44	0.39				RATIO								
%RK	20	20	15	25	55	95	15	25	65	50	70	3	>95	20	4	40	Contmp	1	1	1		1	1	1	1

JT 330 is our first offering out of Timeless. Until now, we have retained them all. Her line offers perfect udders, high growth, and great carcass. Rolex needs no introduction. He will only make this better. This bull is really deep and correct.

48A-E

CJ'S GAME DAY
 DNA# 123015084104

J&T FARM
Polled Semen

 ID **CJ'S GAME DAY**
 BBU NO **C1082272**
 SEX **MALE**
 DOB **10/18/16**
 COLOR **BLACK**
 BREEDER **JONES BEEFMASTERS**
5 PACKAGES
OF 5 STRAWS
\$2500 PER PACKAGE

SIRE BLACK GOLD 27 SEQUOYAH 4/3/16
 CJ'S JUSTICE J100 RED DAWN 1/5
 CJ'S DARK SECRET 01-8 1645/3
 433

DAM CHRK GENESIS 1500T BLACK BAYOU 1071/3
 CHRK MILKY WAY 1863X CHRK MISS REBA 1194/5
 721T10 CJ'S SOUL MAN 168
 721/0

	EXPECTED PROGENY DIFFERENCES								ULTRASOUND EPDs				INDEXES			INDIVIDUAL PERFORMANCE RECORDS									
	CE	BW	WW	YW	MILK	MCE	MWWT	SC	STAY	AFC	REA	%IMF	FAT	\$T	\$M	FE\$	ADJ TRAIT	BW	WW	YW	SC	REA	IMF	RIB FT	RUMP FT
EPD	2.89	0.8	59	88	12	2.19	41.16	1.19	1.90	-0.36	0.36	0.35	-0.01	169.75	33.69	23.94		80	780	1188	32.2	12.93	2.41	0.22	0.33
ACC	0.37	0.84	0.76	0.77	0.26	0.19		0.55	0.23	0.19	0.19	0.84	0.79				RATIO	90.0			35.0				
%RK	65	65	2	1	15	95	1	10	30	75	30	3	95	1	4	10	Contmp	9	1	1		1	1	1	1

We've had so much interest in Game Day semen that we decided to offer these 5 packages. The last two times it sold at auction it brought \$600/straw. Not many bulls can offer as much to improve a breeding program as Game Day. The look, the carcass, the performance, the EPD's, and the fertility can all be improved by using this bull. His track record is strong with progeny like Daybreak, NG Firestone, Nightfall, and the females in this sale. Last years make a pretty solid statement.

48F

JT LET'R RIP
 DNA# NE02384933

J&T FARM
Polled Semen

 ID **JT LET'R RIP**
 BBU NO **C1158388**
 SEX **MALE**
 DOB **8/6/21**
 COLOR **BLACK**
 BREEDER **J & T FARM**
1 PACKAGE
OF 3 STRAWS

SIRE CF ADRENALINE 170 INFINITY 120/96
 CJ POWER PLAY 54/17 OASIS 655
 CJ'S DIAMOND OF SOUL 509 CJ'S SOUL MAN 168
 MISS CJ 254

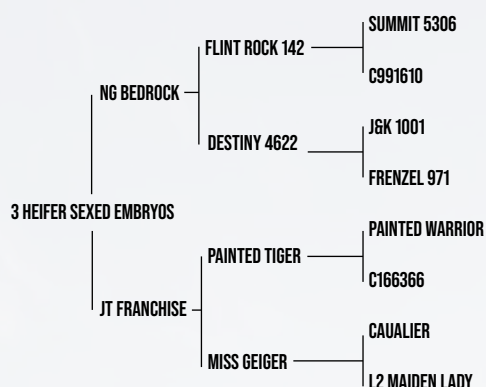
DAM CF LIMITED EDITION 861/3 VMAX 649/1
 JT2117 1845/3
 4510 JACKPOT 2/927
 INFINITE JUNGLE POWER 22/07

EXPECTED PROGENY DIFFERENCES										ULTRASOUND EPDs				INDEXES			INDIVIDUAL PERFORMANCE RECORDS									
	CE	BW	WW	YW	MILK	MCE	MWWT	SC	STAY	AFC	REA	%IMF	FAT	\$T	\$M	FE\$	ADJ TRAIT	BW	WW	YW	SC	REA	IMF	RIB FT	RUMP FT	
EPD	2.47	1.2	28	37	9	2.63	23.24	0.26	-3.00	-0.57	0.11	0.03	-0.03	78.24	17.36	28.24		70	607	1129		15.77	3.78	0.25	0.45	
ACC	0.33	0.58	0.54	0.53	0.19	0.18		0.35	0.19	0.18	0.51	0.57	0.49				RATIO	90.0	100	103						
%RK	75	75	40	45	55	75	45	60	85	65	60	35	55	45	45	30	Contmp	4	2	2		1	1	1	1	

In this lot, we are going to auction with three straws of Let'r Rip. He is homozygous black and homozygous polled. His progeny in this sale is the proof you need. They are all polled, big topped, and great phenotype females with excellent carcass data. Also, his progeny that are offered are not out of donors. This is a solid semen sire opportunity.

49A

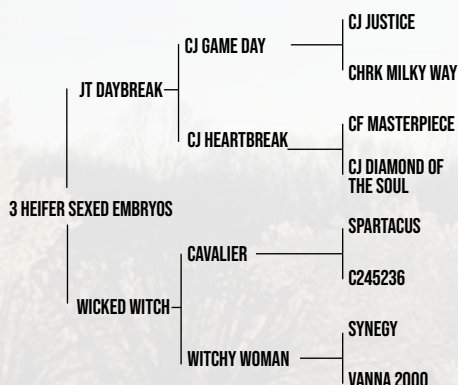
TT BEEFMASTERS
Embryos



NG Bedrock on the Franchise cow is an easy choice. This cow never misses, and I don't expect this Bedrock mating to be any different. Here, you can get in on the front of this bull, and do it with one of the best cow families in the breed.

49B

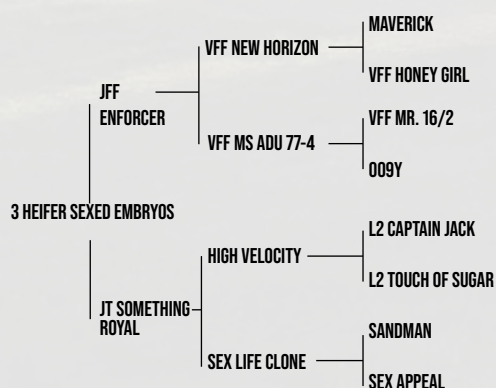
J&T FARM
Embryos



Here is an opportunity to get in on a combination of the hottest bull in the breed with one of the most famous cows. A red polled Wicked Witch daughter is all but guaranteed. This mating will work.

49C

J&T FARM
Embryos



Here is another red polled, performance bull on another great cow. This should also produce another red polled heifer. Performance will be front and center here. Predictable cow families mated to high caliber bulls work every time. Don't miss these.

TERMS AND CONDITIONS OF SALE

BIDDING: Each animal will be sold to the highest bidder without reserve.

BIDDING DISPUTE:

TERMS: Terms of the sale are cash due upon sale, unless prior credit arrangements for the sale have been agreed upon in writing between the Buyer and Seller, in which event, the terms of the written credit arrangement between the Buyer and Seller for the sale shall prevail. The failure of a member buyer to pay the appropriate party the sale amounts when due may constitute a cause for exclusion from BBU pursuant to

Article I, section 9 of the By Laws of BBU.

The Auctioneer in charge will settle any dispute as to bids, and his decision on such matters shall be final.

PURCHASER'S RISK: Each animal becomes the risk of the purchaser as soon as the auctioneer declares it sold.

CERTIFICATE OF BREEDING AND/OR TRANSFERS: All required paperwork will be transferred to the buyer at the seller's expense, upon settlement.

HEALTH: All animals will have appropriate certificates of veterinary inspection for travel to the sale site and will to the best of the seller's knowledge be eligible for interstate shipment, however, buyers need to be aware of their individual resident state's requirements for shipment of cattle. Any and all testing will have been completed within thirty (30) days of the sale date.

ANNOUNCEMENTS: If any changes in information of any kind are announced from the auction box, said announcements shall take precedence.

BREEDING GUARANTEES:

1) The seller guarantees that all animals are breeders, with the exception of: (a) calves under 12 months of age at the time of the sale; (b) animals shown after the sale has occurred (in such cases, the breeding guarantees, if any, will be those guarantees as are agreed upon between the seller and the buyer); (c) animals who suffer injury or disease following the sale; (d) animals administered any super ovulation drug or growth hormone after purchase; and, (e) animals subjected to negligence by or willful misconduct on the part of the buyer.

2) Females: (a) open females are so guaranteed; (b) any female is considered to be a breeder if she is certified to be pregnant by a licensed veterinarian at the time of sale and/or has a nursing calf at side; and, (c) safe in calf females have been examined by a veterinarian and so guaranteed.

3) Bulls eighteen (18) months or older are guaranteed by the seller to have passed a breeding soundness exam (BSE) and have been certified a satisfactory potential breeder by a licensed veterinarian within 60 days prior to the sale.

4) If within one-hundred twenty (120) days from the date of sale, the bull has failed to pass a BSE certified by a licensed veterinarian, buyer must send seller written notification of the failure of the test within one-hundred twenty (120) days from the date of sale and include the BSE test results. Within sixty (60) days after seller's notification of the failed BSE test, buyer and seller shall identify a mutually agreeable licensed veterinarian or technician certified by a licensed veterinarian to perform another BSE on the bull at the buyer's expense. The results of the test shall be deemed final and conclusive of this matter and binding on buyer and seller. If, in the opinion of said veterinarian or technician, the bull is unable to pass a BSE and be confirmed a satisfactory potential breeder, he shall so certify in writing to the seller and the buyer which shall include the official form used by the Society of Theriogenology or the official BBU BSE form. In such event the buyer may return the bull to the farm of seller, provided the bull is in good condition and in compliance with the health requirements of the seller's state, for a refund of the full purchase price. The acceptance of the refund of the full purchase price shall in any case be deemed full satisfaction and settlement of the matter. The seller and buyer shall bear equally all reasonable and necessary transportation expenses that are incurred in returning the animal to seller. **Unless otherwise agreed by the buyer and the seller, the seller makes no guarantees with respect to the ability to freeze semen.**

PRIVILEGES OF RETURN OR ADJUSTMENT OPTIONS:

1) With the exception of any applicable transportation expenses described herein, a seller shall never be liable to a buyer for an amount greater than the original selling price of any animal sold under these Sales Terms and Conditions.

2) Unless otherwise stated, all claims for adjustment or refund must be made in writing to the seller within 180 days following the sale of the animal in question.

3) If an animal is claimed to be a non-breeder, the animal may be returned to the seller if it is in a good condition and complies with the health requirements of the seller's state. At the option of the buyer, the seller may issue a credit to the buyer for use in a future purchase or provide an animal of equal value subject to the approval of buyer. If the buyer exercises either such option, the claim shall be deemed fully and satisfactorily resolved. However, in the event that the buyer requests a refund of the purchase price, the seller may, at its option, either issue a refund of the full purchase price or, shall have 180 days from the date the animal is returned to the seller's farm to conduct a trial to demonstrate the returned animal is a breeder. Refund of the full purchase price or demonstrated proof that the animal is a breeder during the test trial shall be deemed full satisfaction and settlement of the claim. Any expense incurred for transporting an animal claimed to be a non-breeder will be the responsibility of the buyer, except that the seller will be responsible for transportation costs in excess of the distance between the buyer's farm and the location where the sale took place. If the seller proves the animal to be a breeder, it will be the obligation of the buyer to take delivery of the animal and pay all transportation expenses.

4) If an animal is sold and subsequently becomes ineligible for registration under the rules of BBU for reasons other than incorrect parentage, the seller must make a satisfactory adjustment on the purchase price to the buyer, or at the option of the seller, refund the purchase price upon the return of the animal to the farm of the seller.

5) If an animal (including the offspring of a pregnant recipient) is sold and through parentage verification is proven to have incorrect parentage, as represented by the animal's certificate of registration, and for which correct parentage can be determined, the seller is obligated to make a satisfactory adjustment on the purchase price to the buyer or, at the seller's option, refund the purchase price upon the return of the animal to the farm of the seller. Any claim for adjustment or refund under this paragraph must be made in writing to the seller on or before the first anniversary of the date of the sale.

6) Unless stated otherwise, all transportation expenses incurred will be the responsibility of the buyer, except that the seller will be responsible for transportation costs in excess of the distance between the buyer's farm and the location where the sale took place.

MISCELLANEOUS:

1) The above terms and conditions of sale constitute a contract between the buyer and the seller and are equally binding upon both parties. Each sale or resale of an animal constitutes a separate transaction.

2) Neither BBU nor any director, officer, employee or representative of BBU or any of its related entities shall be liable in any way with respect to a transaction conducted under these Sales Terms and Conditions; nor shall BBU, its directors, officers, employees or representatives be responsible in any way for enforcing the terms and conditions of any agreement between a buyer and a seller. Each buyer and seller agree to hold BBU, its directors, officers, employees, representatives and related entities harmless from all damages, expenses, claims, losses and other liabilities associated with a transaction conducted under these Suggested Sales Terms and Conditions.

3) No sponsor, sale manager, or other person connected with the management of a sale shall be liable in any way with respect to transactions conducted under these Sales Terms and Conditions.

4) These sale terms and conditions and all rights, obligations and duties arising hereunder and all disputes arising hereunder will be construed in accordance with, and governed by, the laws of the state in which the sale occurs, without giving effect to such state's choice of law rules.

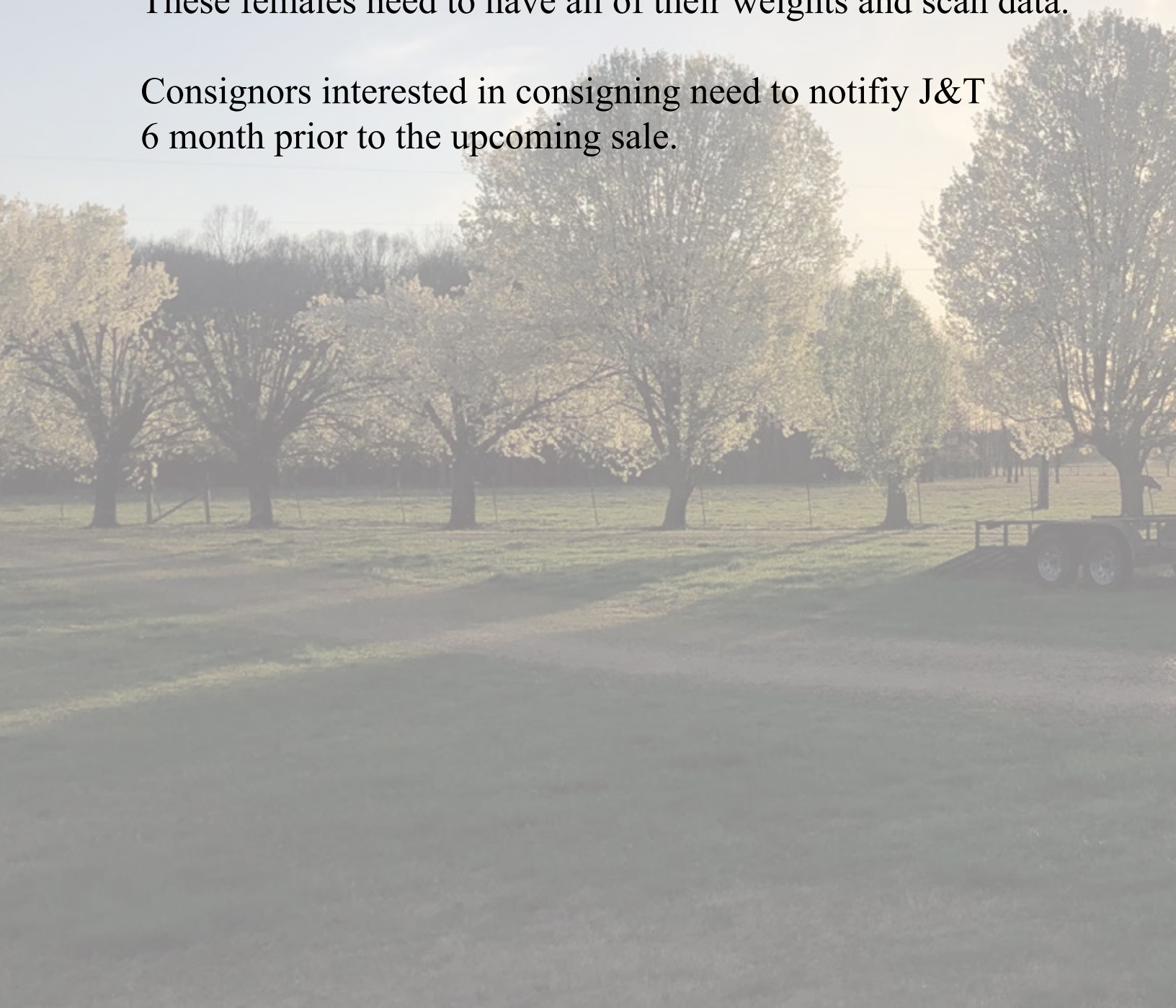
5) UNLESS OTHERWISE EXPRESSLY STATED IN THESE SALE TERMS AND CONDITIONS OR ANY OTHER WRITTEN AGREEMENT BETWEEN THE PARTIES RELATING TO THE SALE OR BEEFMASTER, BEEFMASTER ADVANCER, E6 OR UPGRADING CATTLE UNDER THESE SALE TERMS AND CONDITIONS, SELLER MAKES NO OTHER WARRANTIES, EXPRESS OR IMPLIED, INCLUDING ANY IMPLIED WARRANTY OF MERCHANTABILITY OR FITNESS FOR A PARTICULAR PURPOSE, EVEN IF SUCH PURPOSE IS KNOWN TO THE PARTIES. THE REMEDIES PROVIDED IN THESE SALE TERMS AND CONDITIONS ARE THE EXCLUSIVE REMEDIES OF THE BUYER, OR ANY PARTY CLAIMING THROUGH THE BUYER, AND UNDER NO CIRCUMSTANCES WILL THE SELLER BE LIABLE FOR ANY INCIDENTAL, INDIRECT, SPECIAL, CONSEQUENTIAL, PUNITIVE OR EXEMPLARY DAMAGES UNDER ANY INDEMNITY PROVISION OR OTHERWISE.

J&T Consignment Rules:

Heifers raised out of a J&T consigned female that was purchased at a J&T production sale beginning in 2021 are eligible to be sold at future J&T sales.

These females need to have all of their weights and scan data.

Consignors interested in consigning need to notify J&T 6 month prior to the upcoming sale.





J&T Farms

Jerry Thomas
2555 Simmons Rd.
Henderson, TN 38340

J&T Farm **11th** *Production Sale*

August 2, 2025- 10:30 a.m.
Lexington, Tennessee
First Farmers Co-op Livestock Center