



ROSEFIELD

Spring - Summer 2026

## This is Rosefield

---



Rosefield reimagines watches & jewelry for relaxed elegance and easy living. We make fashion-forward styles that blend the classic with the modern. Where function meets form. At a price that works for today's cosmopolitan consumer.

Who is she? The Rosefield Woman is the epitome of city living with her finger on the pulse of what's next, what's new, what's now. She's the quintessential cool girl that isn't afraid to try new things. The Rosefield Woman sets trends — never follows them — and knows what she wants in life. This is at the core of our design philosophy.

Rosefield draws inspiration from Dutch minimalist design while taking cues from global contemporary fashion aesthetics. Our collections incorporate elements of vintage beauty from classic pieces mixed with the creativity of the future.

It's about being timeless, not trendy.

VERTRIEB IN DEUTSCHLAND DURCH:

MONA LUXWARE KG  
Speditionstrasse 15a  
40221 Düsseldorf

bestellung@mona-luxware.de  
0211 46890089  
www.MONA-LUXWARE.de

# Neuheiten

Spring - Summer 2026

## Gaia XS

- Case dimensions: 25 × 25 × 30.5 mm
- Case thickness: 6.3 mm
- Dial type: Matte (01 - 03), Sunray (04)
- Strap size: 14 - 10 mm (non-interchangeable)

- Strap material: Stainless steel
- Indexes: Roman
- **Availability: January**

01.



ORCGSG-OR04 € 139

Creme Matte - Steel  
- Gold

EAN: 8721292002849

ORCGSG-OR04



8 721292 | 002849

02.



ORCSSS-OR05 € 139

Creme Matte - Steel  
- Silver

EAN: 8721292002856

ORCSSS-OR05



8 721292 | 002856

03.



ORCDSD-OR06 € 139

Creme Matte - Steel  
- Duotone

EAN: 8721292002863

ORCDSD-OR06



8 721292 | 002863

04.



ORSRSR-OR07 € 139

Rose Sunray - Steel  
- Rose Gold

EAN: 8721292002870

ORSRSR-OR07



8 721292 | 002870

## Ivy

- Case dimensions: 21.23 × 25.84 × 33.85 mm
- Case thickness: 6.7 mm
- Dial type: Matte
- Strap size: 12 mm

- Strap material: Stainless steel
- Indexes: Roman
- **Availability: March**



OCWRSR-OC04 € 129

White Matte - Steel  
- Rose Gold

EAN: 8721292002962

OCWRSR-OC04



8 721292 | 002962

## Rose

- Case dimensions: 33.23 × 40 mm
- Case thickness: 7.7 mm
- Dial type: Sunray etching (01 - 03), Matte (04)
- Strap size: 20 - 16 mm (non-interchangeable)

- Strap material: Stainless steel
- Indexes: Roman
- **Availability: March**

01.



SPCGSG-SP01 € 159

Ivory Sunray - Steel  
- Gold

EAN: 8721292002887



02.



SPCSSS-SP03 € 159

Ivory Sunray - Steel  
- Silver

EAN: 8721292002900



03.



SPRSR-SP04 € 159

Rose Gold Sunray - Steel  
- Rose Gold

EAN: 8721292002917



04.



SPCDSD-SP05 € 159

Cappucino Matte - Steel  
- Duotone

EAN: 8721292002924



## Mini

- Case dimensions: 18 × 22 mm
- Case thickness: 6.5 mm
- Strap size: 8 mm (non-interchangeable)

- Strap material: Stainless steel
- Dial type: Mother of Pearl
- **Availability: March**



MWRMR-M07 € 139

White MOP - Mesh  
- Rose Gold

EAN: 8721292003822



# Uhren

## Gaia

- Case dimensions: 30 × 30 mm
- Case thickness: 6.5 mm
- Dial type: Matte
- Strap size: 18 - 14 mm (non-interchangeable)
- Strap material: Stainless steel
- Indexes: Roman



ORCGSG-OR01 € 139

Creme Matte - Steel  
- Gold

EAN: 8721292000784



ORCSSS-OR02 € 139

Creme Matte - Steel  
- Silver

EAN: 8721292000791



ORCDSD-OR03 € 139

Creme Matte - Steel  
- Duotone

EAN: 8721292000807



## Ivy

- Case dimensions: 21 × 26 mm
- Case thickness: 6.7 mm
- Dial type: Matte
- Strap size: 12 mm
- Strap material: Stainless steel
- Indexes: Roman



OCWGS-OC01 € 129

White Matte - Steel  
- Gold

EAN: 8721292000531



OCWSS-OC02 € 129

White Matte - Steel  
- Silver

EAN: 8721292000548



OCWDS-OC03 € 129

White Matte - Steel  
- Duotone

EAN: 8721292000555



## Ovale

- Case dimensions: 22 × 29 mm
- Case thickness: 7.7 mm
- Dial type: Matte
- Strap size: 10 mm
- Strap material: Genuine leather (01), Stainless steel (02 - 04)

01.



**OVBGLG-OV18 € 129**

Black Matte - Leather  
- Gold

EAN: 8721292002801



02.



**OVWGSG-OV19 € 149**

White Matte - Steel  
- Gold

EAN: 8721292002818



03.



**OVWSSS-OV20 € 149**

White Matte - Steel  
- Silver

EAN: 8721292002825



04.



**OVWRSR-OV21 € 149**

White Matte - Steel  
- Rose Gold

EAN: 8721292002832



## Studio Bangle

- Case dimensions: 23.5 × 19.5 mm
- Case thickness: 7.5 mm
- Dial type: Mother of Pearl
- Strap size: 58 mm (01), 62 mm (02)  
(non-interchangeable)
- Strap material: Stainless steel

01.



**STWGSG-ST04 € 159**

White MOP - Steel  
- Gold

EAN: 8720791526825



02.



**STWGSG-ST05 € 159**

White MOP - Steel  
- Gold

EAN: 8720791526832



# Mini

- Case dimensions: 15 × 18.5 mm (01, 02), 18 × 22 mm (03, 04),  
∅ 20.4 mm (05, 06)
- Case thickness: 6.8 mm (01, 02), 6.5 mm (03 - 06)
- Strap size: 8 mm (non-interchangeable)

- Strap material: Stainless steel
- Dial type: Sunray etching (01, 02), Mother of Pearl (03, 04), Sunray (05), Matte (06)

01.



**MWGMG-M01 € 139**

White CD Sunray - Mesh  
- Gold

EAN: 8720791526849



02.



**MWSMS-M04 € 139**

White CD Sunray - Mesh  
- Silver

EAN: 8720791526870



03.



**MWGMG-M02 € 139**

White MOP - Mesh  
- Gold

EAN: 8720791526856



04.



**MWSMS-M05 € 139**

White MOP - Mesh  
- Silver

EAN: 8720791526887



05.



**MCGMG-M03 € 139**

Champagne Sunray - Mesh  
- Gold

EAN: 8720791526863



06.



**MWSMG-M06 € 139**

White Matte - Mesh  
- Duotone

EAN: 8720791526894



# Boxelle

- Case dimensions: 19.5 × 19.5 mm
- Case thickness: 7 mm
- Dial type: Matte (01 - 03), Sunray (04, 05), Sunray etching (6), Black Matte & Crystals (07, 08)
- Strap size: 12 mm
- Strap material: Stainless steel

01.



**BWGS-G-B01 € 129**

White Matte - Steel  
- Gold

EAN: 8720791528720



02.



**BWSS-S-B02 € 129**

White Matte - Steel  
- Silver

EAN: 8720791528737



03.



**BWDS-G-B03 € 129**

White Matte - Steel  
- Duotone

EAN: 8720791528744



04.



**BCGS-G-B04 € 129**

Champagne Sunray - Steel  
- Gold

EAN: 8720791528751



05.



**BEGS-G-B05 € 129**

Emerald Sunray - Steel  
- Gold

EAN: 8720791528768



06.



**BBDG-S-B07 € 129**

Black CD Sunray - Steel  
- Duotone

EAN: 8721292000579



07.



**BBGS-G-B08 € 139**

Black 4 Crystal - Steel  
- Gold

EAN: 8721292000760



08.



**BBGS-G-B09 € 139**

Black Crystal - Steel  
- Gold

EAN: 8721292000777



## Small Edit

- Case dimensions: 26 mm
- Case thickness: 6.5 mm
- Dial type: Matte (01 - 03), Mother of Pearl (04 - 06, 09, 10), Sunray (07, 08), Sunray etching (11)
- Strap size: 12 mm
- Strap material: Stainless steel (01 - 08), Half Moon Polish & Matte Steel (09, 10)



**26BSG-268 € 119**

Black Matte - Steel  
- Gold

EAN: 8720039333987



**26WSG-267 € 119**

White Matte - Steel  
- Gold

EAN: 8720039333970



**26SGD-269 € 119**

White Matte - Steel  
- Duotone

EAN: 8720039333994



**SMGMG-S06 € 99**

White MOP - Mesh  
- Gold

EAN: 8720246519549



**26WS-266 € 99**

White MOP - Mesh  
- Silver

EAN: 8719632571964



**SEEGMG-SE72 € 99**

Emerald MOP - Mesh  
- Gold

EAN: 8720791522742



**SCGSG-S05 € 119**

Champagne Sunray - Steel  
- Gold

EAN: 8720246519501



**SEGS-SE01 € 119**

Burgundy Sunray - Steel  
- Gold

EAN: 8720791525699



**SEWGS-SE02 € 119**

White MOP - Steel  
- Gold

EAN: 8720791525705



**SEWDSG-SE03 € 119**

White MOP - Steel  
- Duotone

EAN: 8720791525712



**SEBDSG-SE04 € 119**

Black CD Sunray - Steel  
- Duotone

EAN: 8721292000586



# Heirloom

- Case dimensions: 23.5 × 30.6 mm
- Case thickness: 6.0 mm
- Dial type: Matte & Sunray (01 - 05), Sunray (08)
- Strap size: 16 mm
- Strap material: Stainless steel (01 - 03), Genuine leather (04 - 06)

01.



**HWGSG-H01 € 129**

White Matte & Sunray  
- Steel - Gold

EAN: 8720791524494



02.



**HWSSS-H02 € 129**

White Matte & Sunray  
- Steel - Silver

EAN: 8720791524500



03.



**HWDSG-H03 € 129**

White Matte & Sunray  
- Steel - Duotone

EAN: 8720791524517



04.



**HWBLG-H06 € 99**

White Matte & Sunray  
- Leather - Gold

EAN: 8720791525620



05.



**HBBLS-H08 € 99**

Burgundy Matte & Sunray  
- Leather - Silver

EAN: 8720791525644



06.



**HCBLG-H07 € 99**

Champagne Sunray  
- Leather - Gold

EAN: 8720791525637



## Studio Edition 02

- Case dimensions: 19.5 × 24 mm
- Case thickness: 7.0 mm
- Dial type: Sunray etching

- Strap size: 16 mm (non-interchangeable)
- Strap material: Stainless steel
- Adjustable wrist size: 13.8 cm (min.), 18.5 cm (max.)



**SWGSG-O55 € 159**

White CD Sunray - Steel  
- Gold

EAN: 8720246516395



**SBGSG-O57 € 159**

Black CD Sunray - Steel  
- Gold

EAN: 8720246516593



**SWSSS-O56 € 159**

White CD Sunray - Steel  
- Silver

EAN: 8720246516401



## Studio Edition 04

- Case dimensions: 19.5 × 24 mm
- Case thickness: 7.0 mm
- Dial type: Sunray etching (01, 02), Sunray (03)

- Strap size: 19 mm (non-interchangeable)
- Strap material: Stainless steel

01.



**SWGSG-O76 € 159**

White CD Sunray - Steel  
- Gold

EAN: 8720791522278



02.



**SBGSG-O77 € 159**

Black CD Sunray - Steel  
- Gold

EAN: 8720791522285



03.



**SGSSS-O78 € 159**

Gunmetal Sunray - Steel  
- Silver

EAN: 8720791522292



# Octagon XS

- Case dimensions: 19.5 × 24 mm
- Case thickness: 7.0 mm
- Dial type: Sunray etching (01 - 06, 10 - 12), Mother of Pearl (07), Sunray (08, 09)
- Strap size: 12 mm
- Strap material: Stainless steel (01 - 09), Genuine leather (10, 11), Croco leather (12)

01.



**OWGSG-O60 € 129**

White CD Sunray - Steel - Gold

EAN: 8720246519341



02.



**OBSGS-O61 € 129**

Black CD Sunray - Steel - Gold

EAN: 8720246519358



03.



**OWDSG-O62 € 129**

White CD Sunray - Steel - Duotone

EAN: 8720246519365



04.



**OWGSS-O63 € 129**

White CD Sunray - Steel - Silver

EAN: 8720246519372



05.



**OWGMG-O73 € 119**

White CD Sunray - Mesh - Gold

EAN: 8720791521516



06.



**OBDSG-O88 € 129**

Black CD Sunray - Steel - Duotone

EAN: 8721292000562



07.



**OEGSG-O79 € 129**

Emerald MOP - Steel - Gold

EAN: 8720791522308



08.



**OBSGS-O83 € 129**

Burgundy Sunray - Steel - Gold

EAN: 8720791526436



09.



**OCGSG-O82 € 129**

Champagne Sunray - Steel - Gold

EAN: 8720791525651



10.



**OWBLG-O84 € 99**

White CD Sunray - Black Leather - Gold

EAN: 8720791526443



11.



**OWBLG-O85 € 99**

White CD Sunray - Brown Leather - Gold

EAN: 8720791526450



12.



**OWGLG-O86 € 99**

White CD Sunray - Green Leather - Gold

EAN: 8720791526467



## Octagon

- Case dimensions: 23 × 29 mm
- Case thickness: 7,5 mm
- Dial type: Sunray etching (01 - 04), Sunray (05)
- Strap size: 14 mm
- Strap material: Stainless steel

01.



OCWSG-040 € 129

White CD Sunray - Steel  
- Gold

EAN: 8720039335813



02.



OCWSS-041 € 129

White CD Sunray - Steel  
- Silver

EAN: 8720039335820



03.



OBSSG-047 € 129

Black CD Sunray - Steel  
- Gold

EAN: 8720039339194



04.



OWSSSG-048 € 129

White CD Sunray - Steel  
- Duotone

EAN: 8720039339200



05.



OCGSG-065 € 129

Champagne Sunray - Steel  
- Gold

EAN: 8720246519518



## Ace XS

- Case dimensions: 29 mm
- Case thickness: 7,4 mm
- Dial type: Sunray (01 - 03), Matte (04)
- Strap size: 16 mm
- Strap material: Stainless steel

01.



ASGSG-A15 € 129

Silver Sunray - Steel  
- Gold

EAN: 8720246511024



02.



ASSSS-A20 € 129

Silver Sunray - Steel  
- Silver

EAN: 8720246512007



03.



ASDSSG-A16 € 129

Silver Sunray - Steel  
- Duotone

EAN: 8720246511031



04.



ABGSG-A19 € 129

Black Matte - Steel  
- Gold

EAN: 8720246511987



## Boxy XS

- Case dimensions: 22 × 24 mm
- Case thickness: 6,4 mm
- Dial type: Sunray etching (02 - 04, 08), Mother of Pearl (05) Sunray (06, 07)
- Strap size: 14 mm
- Strap material: Stainless steel (01 - 06), Genuine leather (07, 08)

01.



QMWSG-Q021 € 119

White CD Sunray - Steel - Gold

EAN: 8720039333406



02.



QMWSS-Q020 € 119

White CD Sunray - Steel - Silver

EAN: 8720039333390



03.



QMWSSG-Q023 € 119

White CD Sunray - Steel - Silver Gold Duo

EAN: 8720039333420



04.



QMWMG-Q039 € 109

White CD Sunray - Mesh - Gold

EAN: 8720039335875



05.



BEGSG-Q050 € 119

Emerald MOP - Steel - Gold

EAN: 8720791522315



06.



QCGSG-Q048 € 119

Champagne Sunray - Steel - Gold

EAN: 8720246519488



07.



QBBLR-Q56 € 99

Burgundy Sunray - Brown Leather - Rose Gold

EAN: 8720791526511



08.



QBBLG-Q53 € 99

Black CD Sunray - Black Leather - Gold

EAN: 8720791526481



## Boxy

- Case dimensions: 26 × 28 mm
- Case thickness: 7.0 mm
- Dial type: Sunray etching
- Strap size: 16 mm
- Strap material: Stainless steel



**QWSG-Q09 € 119**

White CD Sunray - Steel - Gold

EAN: 8719632575122



**QWSS-Q08 € 119**

White CD Sunray - Steel - Silver

EAN: 8719632575115



**QVSGD-Q013 € 119**

White CD Sunray - Steel - Duotone

EAN: 8720039330528



**QWSG-Q03 € 109**

White CD Sunray - Mesh - Gold

EAN: 8719632575061



## West Village

- Case dimensions: 33 mm
- Case thickness: 7.0 mm
- Dial type: Mother of Pearl (01, 03), Matte (02, 04)
- Strap size: 16 mm
- Strap material: Nubuck leather (01, 02), Genuine leather (03, 04)



**WEGR-W75 € 99**

White MOP - Elephant Grey - Rose Gold

EAN: 8719324227841



**WSPR-W73 € 99**

White Matte - Soft Pink - Rose Gold

EAN: 8719324227827



**WFGG-W85 € 99**

White MOP - Fresh Olive Green - Gold

EAN: 8720039335844



**WWCG-W86 € 99**

White Matte - Cognac - Gold

EAN: 8720039335851



# Oval

- Case dimensions: 24 × 29 mm
- Case thickness: 6.7 mm
- Dial type: Mother of Pearl (01 - 05), Sunray (06)

- Strap size: 14 mm
- Strap material: Stainless steel (01 - 03), Half Moon Polish & Matte Steel (04 - 06)

01.



**OWGSG-OV01 € 119**

White MOP - Steel  
- Gold

EAN: 8720246511529



02.



**OWGSS-OV03 € 119**

White MOP - Steel  
- Silver

EAN: 8720246511581



03.



**OWGMG-OV10 € 109**

White MOP - Mesh Steel  
- Gold

EAN: 8720246511956



04.



**OVWGS-G-OV16 € 119**

White MOP - Steel  
- Gold

EAN: 8720791525675



05.



**OVWDSG-OV17 € 119**

White MOP - Steel  
- Duotone

EAN: 8720791525682



06.



**OVGSG-OV15 € 119**

Burgundy Sunray - Steel  
- Gold

EAN: 8720791525668



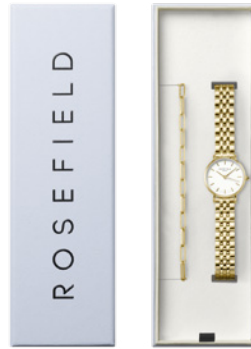
# Gift Sets



**BMWG-X240 € 139**

Boxy XS White CD Sunray  
Gold + Mesh Gold Strap

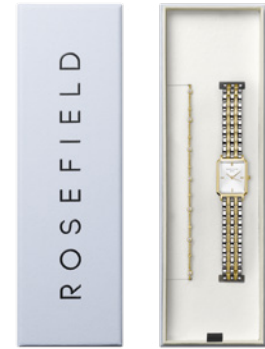
EAN: 8720039334946



**26WGS-G-X278 € 129**

Small Edit White Matte Gold +  
Hammered Chainlink Bracelet  
Gold

EAN: 8720791522407



**OWDSG-X279 € 149**

Octagon XS White CD Sunray  
Duotone + Multi Crystal  
Bracelet Gold

EAN: 8720791522414



**BDOOG-X290 € 149**

Octagon Black CD Sunray  
Duotone + Bracelet Oval Links  
Gold

EAN: 8721292003617



**MOGCB-X289 € 159**

Mini Oval White MOP Gold  
+ Coffee Bean Bracelet Gold

EAN: 8721292003624



**OEGED-X288 € 149**

Octagon XS Emerald MOP  
Gold + Emerald Bracelet Gold

EAN: 8721292003631



**BWGSG-X285 € 139**

Boxy XS White CD Sunray  
Gold + Snake Bracelet Gold

EAN: 8721292002955



**BCGTC-X284 € 169**

Boxelle Champagne Sunray  
Gold + Triple Crystal Bracelet  
Gold

EAN: 8721292000753



**BWGRC-X283 € 169**

Boxelle White Matte Gold +  
Round Crystals Bracelet Gold

EAN: 8721292000746





**BWGCG-X293**

**€ 189**

Studio Bangle Watch White MOP  
Gold + Crystal Bangle Gold

EAN: 8721292004164



# Straps

## Straps 12 mm

### Boxelle, Ivy, Octagon XS and Small Edit

- Strap material: Stainless steel (01 - 18), Nubuck leather (19 - 22), Genuine leather (23, 24), Crocodile leather (25, 26)
- Closure: Jewelry clasp (01 - 18), Buckle clasp (19 - 26)

01.



GGSG-S344 € 49

Steel - Gold

EAN: 8720791521530



02.



GDSGS-S345 € 49

Steel - Silver Gold Duo

EAN: 8720791521547



03.



GSSS-S346 € 49

Steel - Silver

EAN: 8720791521554



04.



IVRRM-S369 € 49

Steel - Rose Gold

EAN: 8721292003839



05.



OCXSG-S337 € 49

Steel - Gold

EAN: 8720246519600



06.



OCXGD-S338 € 49

Steel - Silver Gold Duo

EAN: 8720246519617



07.



OCXSS-S339 € 49

Steel - Silver

EAN: 8720246519624



08.



OCXRD-S340 € 49

Steel - Silver Rose Gold Duo

EAN: 8720246519631



09.



SGMG-S324 € 39

Mesh - Gold

EAN: 8720246513882



10.



26SI-S159 € 39

Mesh - Silver

EAN: 8719632572374



11.



26RG-S158 € 39

Mesh - Rose Gold

EAN: 8719632572367



12.



26SG-S202 € 49

Steel - Gold

EAN: 8720039334106



13.



26SRG-S204 € 49

Steel - Rose Gold

EAN: 8720039334120



14.



26SGD-S203 € 49

Steel - Silver Gold Duo

EAN: 8720039334113



15.



26SRGD-S205 € 49

Steel - Silver Rose Gold Duo

EAN: 8720039334137



16.



**SSSS-S327 € 49**

Steel  
- Silver

EAN: 8720246513912



17.



**SEGS-S354 € 49**

Steel - Polish & Matte  
- Gold

EAN: 8720791525729



18.



**SEDS-S355 € 49**

Steel - Polish & Matte  
- Silver Gold Duo

EAN: 8720791525736



19.



**SBNG-S326 € 35**

Black Leather  
- Gold

EAN: 8720246513905



20.



**SGNS-S325 € 35**

Elephant Grey Leather  
- Silver

EAN: 8720246513899



21.



**SMGLR-S322 € 35**

Elephant Grey Leather  
- Rose Gold

EAN: 8720246513851



22.



**SMPLR-S323 € 35**

Soft Pink Leather  
- Rose Gold

EAN: 8720246513868



23.



**OBGL-S361 € 29**

Black Leather  
- Gold

EAN: 8720791526528



24.



**OBGL-S362 € 29**

Light Brown Leather  
- Gold

EAN: 8720791526535



25.



**OGGL-S363 € 29**

Emerald Leather  
- Gold

EAN: 8720791526542



26.



**OGRL-S364 € 29**

Grey Leather  
- Rose Gold

EAN: 8720791526559



# Straps 14 mm

## Octagon, Boxy XS and Oval

- Strap material: Stainless steel (01 - 17), Nubuck leather (18, 19), Genuine leather (20 - 22), Crocodile leather (23)
- Closure: Jewelry clasp (01 - 17), Buckle clasp (18 - 23)

01.



**QMSG-S195 € 49**

Steel - Gold

EAN: 8720039333468



02.



**QMSS-S194 € 49**

Steel - Silver

EAN: 8720039333451



03.



**QMSRG-S196 € 49**

Steel - Rose Gold

EAN: 8720039333475



04.



**QMSSG-S197 € 49**

Steel - Silver Gold Duo

EAN: 8720039333482



05.



**QMSSR-S198 € 49**

Steel - Silver Rose Gold Duo

EAN: 8720039333499



06.



**OCWSG-S231 € 49**

Steel - Gold

EAN: 8720039336049



07.



**OCWSS-S232 € 49**

Steel - Silver

EAN: 8720039336056



08.



**OCWRG-S233 € 49**

Steel - Rose Gold

EAN: 8720039336063



09.



**OSSGS-S301 € 49**

Steel - Silver Gold Duo

EAN: 8720039339255



10.



**OGSG-S308 € 49**

Steel - Gold

EAN: 8720246511543



11.



**OGSS-S310 € 49**

Steel - Silver

EAN: 8720246511604



12.



**OGSR-S309 € 49**

Steel - Rose Gold

EAN: 8720246511574



13.



**QMWVG-S235 € 39**

Mesh - Gold

EAN: 8720039336094



14.



**QMWVS-S234 € 39**

Mesh - Silver

EAN: 8720039336070



15.



**QMWVR-S236 € 39**

Mesh - Rose Gold

EAN: 8720039336100



16.



OVGGS-S356 € 49

Steel - Polish & Matte  
- Gold

EAN: 8720791525743



17.



OVDSS-S357 € 49

Steel - Polish & Mattel  
- Silver Gold Duo

EAN: 8720791525750



18.



OGNS-S328 € 35

Elephant Grey Nubuck  
- Silver

EAN: 8720246513929



19.



WGNNG-S329 € 35

Forest Green Nubuck  
- Gold

EAN: 8720246513950



20.



OBSBGS-S300 € 29

Black Leather - Gold

EAN: 8720039339248



21.



QBGL-S365 € 29

Black Leather  
- Gold

EAN: 8720791526566



22.



QBRL-S368 € 29

Dark Brown Leather  
- Rose Gold

EAN: 8720791526597



23.



QBGL-S367 € 29

Medium Brown Leather  
- Gold

EAN: 8720791526580



## Straps 16 mm

### Ace XS, Boxy, Heirloom and West Village

- Strap material: Stainless steel (01 - 17), Nubuck leather (18 - 22), Genuine leather (23 - 30), Caviar patterned genuine leather (31)
- Closure: Jewelry clasp (01 - 17), Buckle clasp (18 - 31)

01.



QVSGD-S191 € 49

Steel - Silver Gold Duo

EAN: 8720039330610



02.



QVSRD-S192 € 49

Steel - Silver Rose Gold Duo

EAN: 8720039330627



03.



AGTSG-S305 € 49

Steel - Gold

EAN: 8720246511000



04.



ASTSS-S318 € 49

Steel - Silver

EAN: 8720246512021



05.



ASRTSR-S319 € 49

Steel - Silver Rose Gold Duo

EAN: 8720246512052



06.



**UDSSG-S307 € 49**

Steel - Silver Gold Duo

EAN: 8720246511048



07.



**UGSG-S320 € 49**

Steel - Gold

EAN: 8720246512083



08.



**USSS-S321 € 49**

Steel - Silver

EAN: 8720246512113



09.



**UEG-S135 € 49**

Steel - Gold

EAN: 8719324227865



10.



**UES-S136 € 49**

Steel - Silver

EAN: 8719324227872



11.



**UER-S134 € 49**

Steel - Rose Gold

EAN: 8719324227858



12.



**TMGS-S126 € 39**

Mesh - Gold

EAN: 8719324227599



13.



**TMSS-S127 € 39**

Mesh - Silver

EAN: 8719324227605



14.



**TMRS-S125 € 39**

Mesh - Rose Gold

EAN: 8719324227582



15.



**HGGS-S347 € 49**

Steel - Gold

EAN: 8720791524555



16.



**HSSS-S348 € 49**

Steel - Silver

EAN: 8720791524562



17.



**HDSS-S349 € 49**

Steel - Silver Gold Duo

EAN: 8720791524579



18.



**WBUGS-S137 € 35**

Velvet Blue Leather - Gold

EAN: 8719324227889



19.



**WFGG-S211 € 35**

Forest Green Leather - Gold

EAN: 8720039334151



20.



**WEGRS-S142 € 35**

Elephant Grey Leather - Rose Gold

EAN: 8719324227933





21. **WSPRS-S140 € 35**

Soft Pink Leather  
- Rose Gold  
EAN: 8719324227919



22. **WBLGS-S138 € 35**

Black Leather  
- Gold  
EAN: 8719324227896



23. **HBGL-S358 € 29**

Black Leather  
- Gold  
EAN: 8720791525767



24. **HBSL-S359 € 29**

Burgundy Leather  
- Silver  
EAN: 8720791525774



25. **WCGRG-S208 € 35**

Cool Grey Leather  
- Rose Gold  
EAN: 8720039334076



26. **WCG-S209 € 35**

Cognac Leather  
- Gold  
EAN: 8720039334083



27. **WAG-S210 € 35**

Aubergine Leather  
- Gold  
EAN: 8720039334090



28. **WOPRG-S206 € 35**

Old Pink Leather  
- Rose Gold  
EAN: 8720039334052



29. **WOGRG-S207 € 35**

Fresh Olive Green Leather  
- Rose Gold  
EAN: 8720039334069



30. **WOGG-S240 € 35**

Fresh Olive Green Leather  
- Gold  
EAN: 8720039337756



31. **UGCRG-S304 € 29**

Grey Leather - Rose Gold  
EAN: 8720039339316



# Visual Merchandising

# Layout

In consideration for the available space in your window showcase, we ask that for each visual merchandising set you respect the layout of all individual pieces as outlined below.



## 35 Watches

### DWF053

Approx. dimensions:

35 × 50 × 21 cm

EAN: 8720791524883



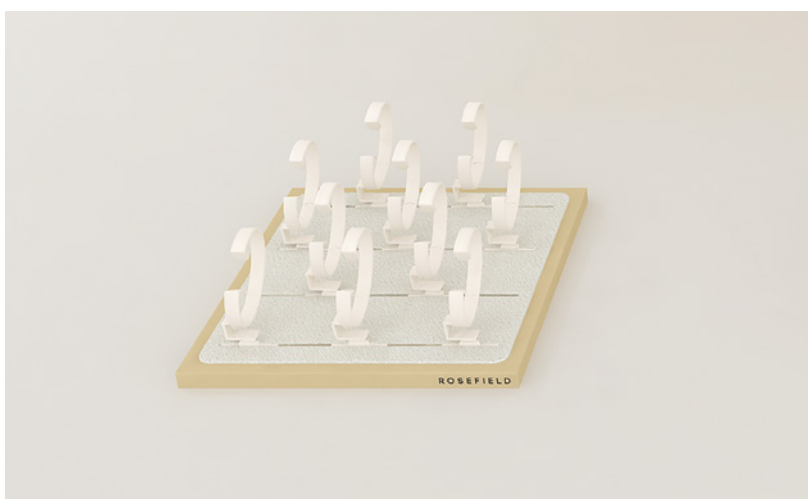
## Large back board

### DWB054

Approx. dimensions:

50 × 53 × 1.5 cm

EAN: 8720791524890



## Extension tray with 10 C-Rings

### DWE055

Approx. dimensions:

24 × 24 × 11 cm

EAN: 8720791524906



# Layout

---



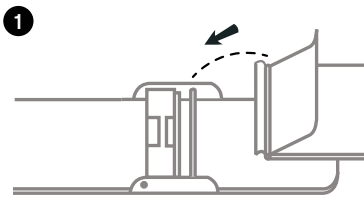
Plain large back board  
**DWB059**

Approx. dimensions:  
40 × 50 × 1.5 cm  
EAN: 8720791526818

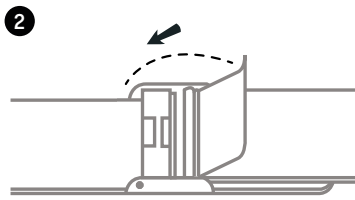


# Instructions

## CLOSING THE CLASP OF YOUR STRAP

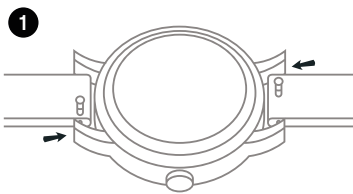


**1.** Hook the top part of the clasp onto the thin metal bar.

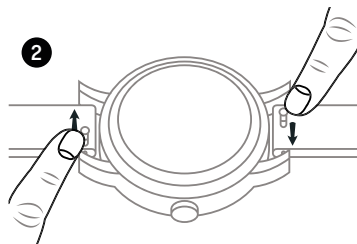


**2.** Snap the closure on.

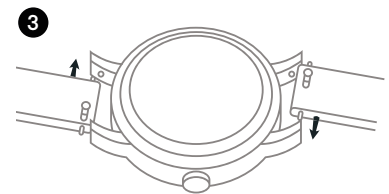
## CHANGING YOUR STRAP



**1.** Securely hold the watch and locate the pin mechanism on the bottom side of the strap.

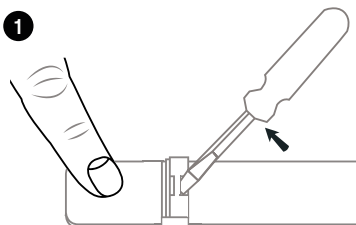


**2.** Slide the pin to the opposite side to release the strap from the lugs.

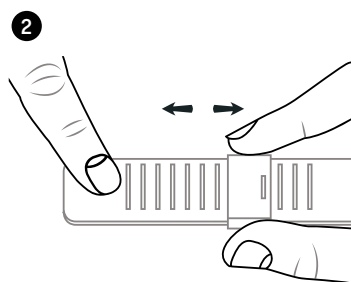


**3.** To attach a new strap, start with the pin located on the opposite side of the slide mechanism. Place the pin in the lug, while slightly tilting the strap forward. Slide the pin mechanism and place the other pin between the lugs.

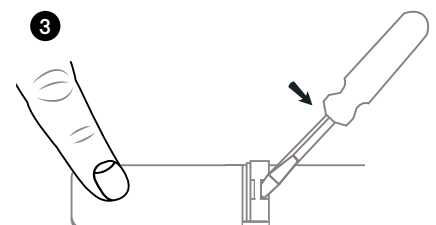
## ADJUSTING THE SIZE OF YOUR STRAP



**1.** Insert a metal tool into the slot and lift up the plate clamp.



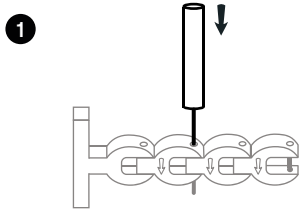
**2.** On the back side, slide the locking clasp to the desired position to adjust the length of the strap.



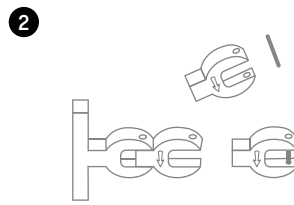
**3.** Press the plate clamp back down (firmly) to lock the clasp to the mesh strap.

# Instructions

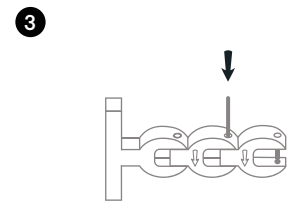
## ADJUSTING THE SIZE OF YOUR LINK STRAP



**1.** Insert the strap tool (supplied with every steel strap) into the hole on the side of the strap and push the pin out in the direction of the arrow. Using a small household hammer, tap lightly until the pin comes out on the other side. Grasp the pin and pull out.



**2.** Remove or add required strap links. If removing more than one strap link, remove an equal number of links from both sides (if possible) to keep the strap even and symmetrical.



**3.** After removing or adding the necessary number of strap links, place the pins back in the opposite direction of the arrows shown on the links, the pin's grooved top faced down. To finish, tap the pins back through using the hammer.

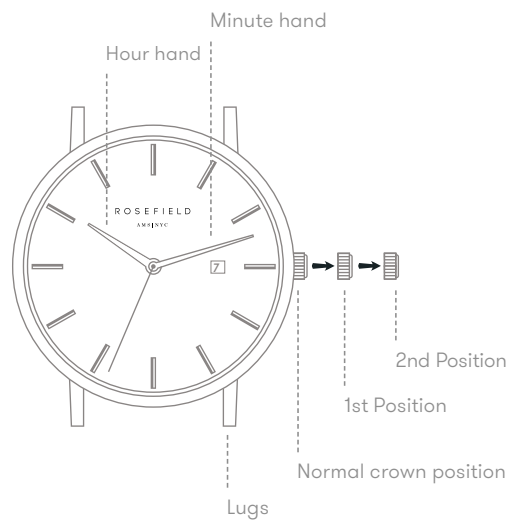
## SETTING THE TIME AND THE DATE

**1.** Remove the plastic stopper to start the watch.

**2.** Pull the crown out to the second position.

**3.** Turn the crown to set the time.

**4.** Push the crown back to the normal position.



**1.** Pull the crown out to the first position.

**2.** Turn the crown counter-clockwise to set the date.

**3.** Push the crown back to the normal position.

*\* If the date is set between the hours of 9:00 PM and 1:00 AM, the date may not change the following day.*

# Warranty & After Sales

---

## WARRANTY

---

Your Rosefield product is guaranteed free from manufacturing defects for a period of 24 months from the date of purchase. This guarantees the buyer that the product meets the standards of usability, reliability, and durability.

The warranty does not apply to:

- Damages as a result of inattention or improper usage such as scratching, bouncing or falling.
- Failure or damage caused by unjustifiable repair or modification performed by a third party, without prior written permission by ROSEFIELD.
- Failure or damage caused by fire or water (the watches are 3 ATM water-resistant).
- Visible wear traces on the watch (e.g. minor scratches on the case and/or crystal, alteration of the color on the watchband and scratches or softening of the leather strap).
- Battery replacement, also not during the warranty term.

## CUSTOMER SERVICE

---

Business to Business Support

Email: [b2b@rosefieldwatches.com](mailto:b2b@rosefieldwatches.com)