

African  
Jacquard

# 2026 CATALOGUE



# INDEX:

## READY-TO-SHIP COLLECTIONS

01-04	KUBA SUMMER
05-08	SAFARI
09-10	GONDISSA
11-14	FLAMBOYANT
15-16	HIBISCUS
17-20	DANAKIL
21-22	MELANGE
23-26	MIXED WAFFLE
27-34	METALLIC BOGOLAN
35-46	BOGOLAN
47-48	MOHAIR
49-50	SEACELL/LINEN
51-52	KELP FOREST
53-56	OUTDOOR KUBA
57-64	TEA TOWELS
59-60	AFRICA MAP
61	CAPE CREATURES
62	POSTCARD
63	BARBERSHOP
64	WILDLIFE
65	CAPE TOWN





AFRICAN JACQUARD IS A  
LUXURY HOME TEXTILES COMPANY  
BASED IN THE HEART OF CAPE  
TOWN, SOUTH AFRICA. SINCE  
2014, WE HAVE BEEN DESIGNING  
AND PRODUCING TEXTILE  
COLLECTIONS THAT ARE MORE  
THAN JUST BEAUTIFUL FABRICS,  
THEY ARE STORIES WOVEN  
FROM OUR TRAVELS THROUGHOUT  
AFRICA. EACH PIECE REFLECTS  
THE CONTINENT'S RICH CULTURAL  
HERITAGE AND THE BEAUTY OF  
ITS LANDSCAPES. WELCOME, TO  
OUR WEAVING JOURNEY.



# FROM CONGO TO COASTLINE

# KUBA SUMMER COLLECTION:

Inspired by the traditional Kuba Cloth of Congo, woven in 100% cotton with a honeycomb waffle texture.



## CUSHION COVERS:

100% COTTON | 55x55cm / 22x22"



FUCHSIA



LAGOON



LEMON



LIME



CORAL

# SUMMER, WOVEN IN COLOUR



## THROWS:

100% COTTON | 130x210cm / 51x83"



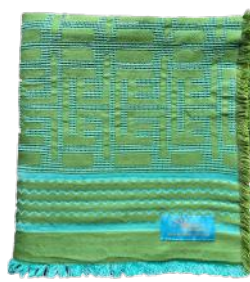
FUSCHIA



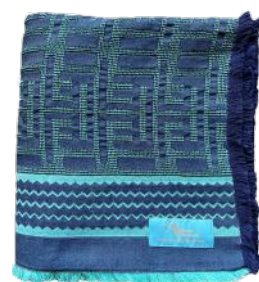
CORAL



LEMON



LIME



LAGOON



## HAND TOWELS:

100% COTTON | 50x60cm / 19x24"



FUSCHIA



CORAL



LEMON



LIME



LAGOON

## BEACH TOWELS:

100% COTTON | 80x165cm / 31x65"



FUSCHIA



CORAL



LEMON



LIME



LAGOON



# SHADES OF SAFARI

# SAFARI COLLECTION:

An ode to Africa's outdoors, woven into patterns that capture the spirit of the wild.



## THROWS:

100% COTTON | 205x125cm / 81x49"



ZEBRA  
MOSS



ZEBRA  
WATERLILLY



GIRAFFE  
MUSHROOM



GIRAFFE  
ROOIBOS

# TOWELS:

100% COTTON | 80x155cm / 31x61"



ZEBRA  
MOSS



ZEBRA  
WATERLILLY



GIRAFFE  
MUSHROOM



GIRAFFE  
ROOIBOS





## HAND TOWELS:

100% COTTON | 50x60cm / 19x24"



ZEBRA  
MOSS



ZEBRA  
WATERLILLY



GIRAFFE  
MUSHROOM



GIRAFFE  
ROOIBOS

## CUSHION COVERS:

100% COTTON | 55x55cm / 22x22"



ZEBRA  
MOSS



ZEBRA  
WATERLILLY



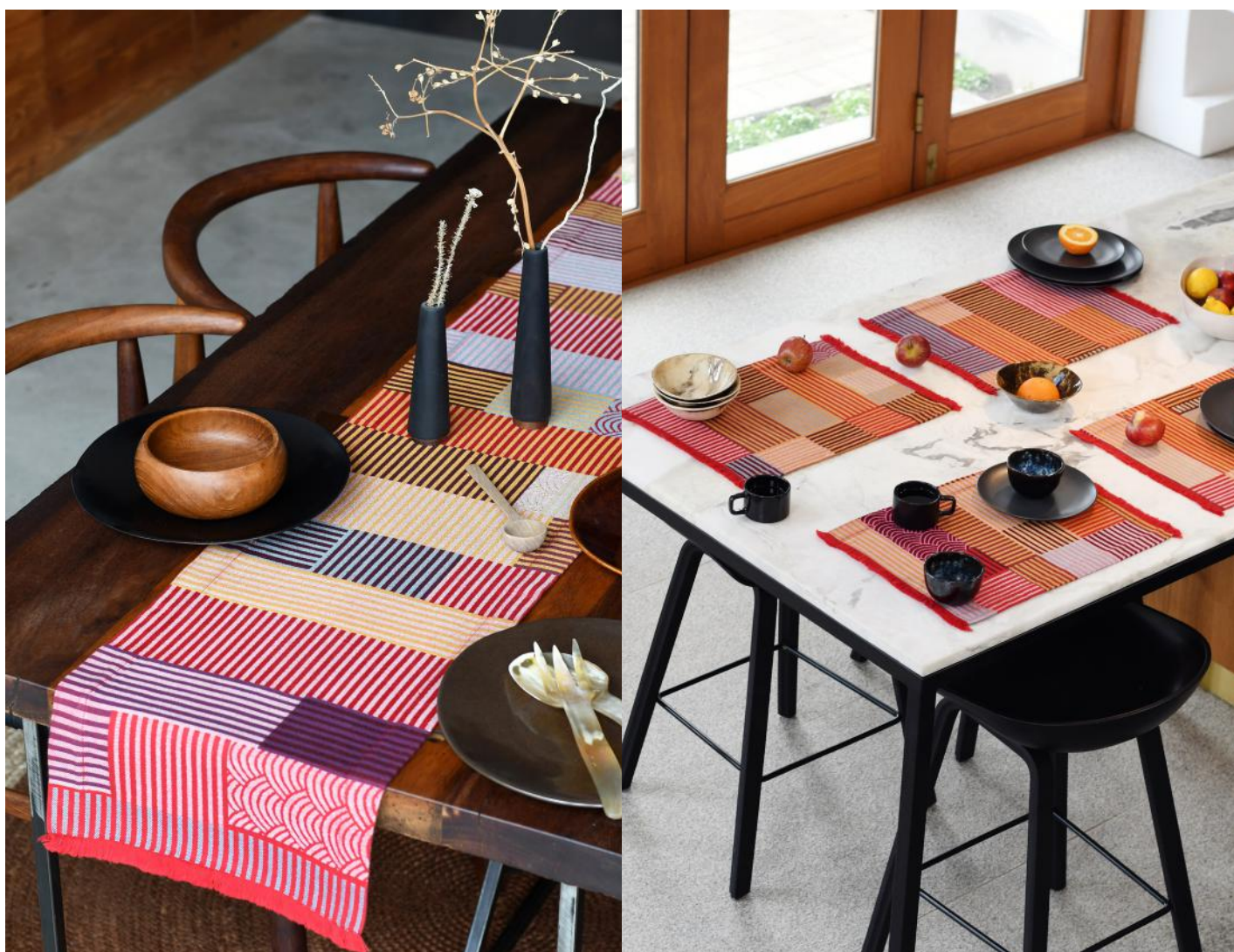
GIRAFFE  
MUSHROOM



GIRAFFE  
ROOIBOS

# GONDISSA COLLECTION:

A harmony of hues, this collection celebrates colour in all its vibrancy, woven into bold, eclectic patterns.



## TABLE LINEN:

100% COTTON

PLACEMAT 33x48cm / 13x19" | RUNNER 33x192cm / 13x76"



SCALLOPS & STRIPES



SCALLOPS & STRIPES



## CUSHION COVERS:

100% COTTON

45x70cm / 18x28" | 60x60cm / 24x24"



THE PEOPLE



SCALLOPS & STRIPES



SCALLOPS & STRIPES



# BORN FROM BOLDNESS

# FLAMBOYANT COLLECTION:

Rooted in the Flamboyant tree's radiant tones, this collection celebrates colour at its most vibrant.



## CUSHION COVERS:

100% COTTON | 45X70cm / 18x28"



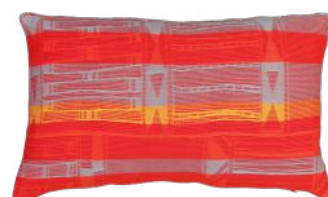
TEAL/  
ORANGE



MAUVE/  
YELLOW



GREEN/  
PINK



TURQUOISE/  
YELLOW

## SCARVES:

100% COTTON | 45x200cm / 18x79"



TEAL/  
ORANGE



MAUVE/  
YELLOW



PINK/  
GREEN



TURQUOISE/  
YELLOW



# LOUNGE THROWS:

100% COTTON | 135x180cm / 53x71"



TEAL/  
ORANGE



YELLOW/  
MAUVE



PINK/  
GREEN



TURQUOISE/  
YELLOW



# HIBISCUS COLLECTION:

Inspired by the abundant blooms found in African gardens, those bright, that seem to follow the sun.



## NAPKINS:

AVAILABLE IN SAGE / SAGE REVERSE

100% COTTON  
40X40cm / 16X16"



## PLACEMATS:

SOLD IN A SET OF TWO | MITRED CORNER

100% COTTON  
36x46cm / 14x18"



## TABLE RUNNERS:

100% COTTON | 54x54cm / 21x21"



## TABLECLOTHS:

WITH MITRED CORNER

100% COTTON

6 SEATER 180x220cm / 71x87"

8 SEATER 180x275cm / 71x108"

10 SEATER 180x330cm / 71x130"

12 SEATER 180x385cm / 71x152"







We weave  
with *intention*-  
for people,  
for place,  
for possibility.

# DANAKIL COLLECTION:

Inspired by the raw beauty and mineral tones of Ethiopia's shimmering salt plains and vast valleys.



## HAND TOWELS:

100% COTTON | 60x95cm / 24x37"



SALT



VOLCANO



SAND

## BATH SHEETS:

100% COTTON | 97x190cm / 38x75"



SALT



VOLCANO



SAND

# MELANGE COLLECTION:

A mix of waffle weaves and two complementary tones, brought together as a true melange for a softly blended, textured effect.



## HAND TOWELS:

100% COTTON | 45x85cm / 18x33"



CORNFLOWER



LIQUORICE



OLIVE



SESAME

## BATH TOWELS:

100% COTTON | 80x145cm / 31x57"



CORNFLOWER



LIQUORICE



OLIVE



SESAME

# MIXED WAFFLE COLLECTION:

A classic made modern. Essential 100% cotton pieces with a timeless texture, fringed as standard and hemmed on request.



# TOWELS:

100% COTTON

IN WHITE & EVERGREEN

HAND TOWELS 50x85cm / 20x33"

BATH TOWELS 80x155cm / 31x61"

BATH SHEETS 110x175cm / 43x69"



## BEDSPREADS:

100% COTTON | MITRED CORNER

IN WHITE & EVERGREEN

SINGLE 140x200cm / 55x79" | DOUBLE 200x200cm / 79x79" | QUEEN 200x235cm / 79x93"  
KING 220x225cm / 87x89" | SKING 260x235cm / 102x93"



## FACECLOTHS:

MITRED CORNER

100% COTTON | 30x30cm / 12x12"



## BATHMATS:

MITRED CORNER

100% COTTON | 45x65cm / 18x26"



## BATHROBES:

LENGTH OPTIONAL (KNEE/CALF/ANKLE)

100% COTTON | SML/MED & MED/LRG



Lustre in  
every layer.





# METALLIC BOGOLAN COLLECTION:

Grounded in bold geometry, woven together with the alluring colours of precious metals. Textural, layered, and striking.



## CUSHION COVERS:

COTTON/LINEN

50x50cm / 20x20" | 45x70cm / 18x28"



COPPER/GOLD



COPPER/GOLD  
(REVERSED)



COPPER/GOLD



COPPER/GOLD  
(REVERSED)

## THROWS & BEDSPREADS:

COTTON/LINEN

LOUNGE THROWS 135x200cm / 53x79"

BED THROWS 210x290cm / 83x114"

BEDSPREADS 290x300cm / 114x118"



COPPER/GOLD



COPPER/GOLD



COPPER/GOLD

## CUSHION COVERS:

COTTON/LINEN

50x50cm / 20x20" | 45x70cm / 18x28"



GOLD/BLACK



GOLD/BLACK  
(REVERSED)



GOLD/BLACK



GOLD/BLACK  
(REVERSED)

## THROWS & BEDSPREADS:

COTTON/LINEN

LOUNGE THROWS 135x200cm / 53x79"

BED THROWS 210x290cm / 83x114"

BEDSPREADS 290x300cm / 114x118"



GOLD/BLACK



GOLD/BLACK



GOLD/BLACK



## NAPKINS:

COTTON/LINEN | 54x54cm / 21x21"



GOLD/BLACK

## TABLECLOTHS:

COTTON/LINEN | MITRED CORNER

- 8 SEATER 175x245cm / 69x96"
- 10 SEATER 175x295cm / 69x116"
- 12 SEATER 175x355cm / 69x140"
- 14 SEATER 175x415cm / 69x163"
- 16-18 SEATER 175x480cm / 69x189"



GOLD/BLACK



# METALLICS MADE MODERN



For linen lovers.



# BOGOLAN COLLECTION:

A modern homage to the traditional mud cloth of Mali.  
Woven with a soft honeycomb texture in linen and cotton blends.



## CUSHION COVERS:

100% LINEN

45x70cm / 18x28" | 65x65cm / 26x26"



NATURAL SAND



WHITE SAND



NATURAL SAND



WHITE SAND

## FLOUNCED CUSHION COVERS:

100% LINEN

45x45cm / 17x17" | 70x70cm / 27x27"



NATURAL SAND



WHITE SAND



NATURAL SAND



WHITE SAND

## BED THROWS:

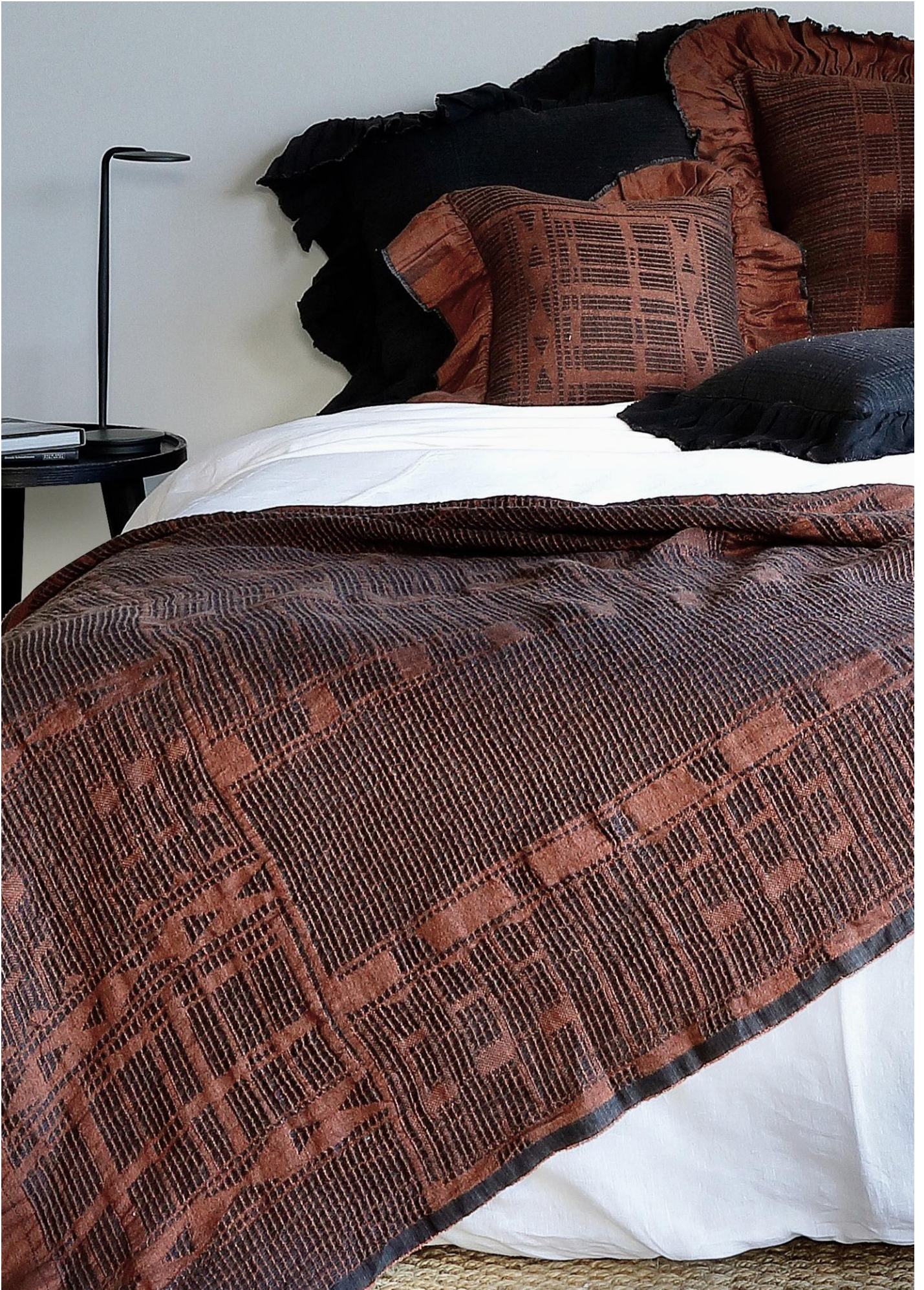
100% LINEN | 135x270cm / 53x106"



NATURAL SAND



WHITE SAND



## CUSHION COVERS:

100% LINEN

45x70cm / 18x28" | 65x65cm / 26x26"



EBONY



RUST



EBONY



RUST

## FLOUNCED CUSHION COVERS:

100% LINEN

45x45cm / 17x17" | 70x70cm / 27x27"



EBONY



RUST



EBONY



RUST

## BED THROWS:

100% LINEN | 135x270cm / 53x106"



EBONY



RUST



## CUSHION COVERS:

COTTON/LINEN

40x60cm / 16x24" | 60x60cm / 24x24"



BUSH



BARK



BUSH



BARK

## OXFORD FLAP CUSHION COVERS:

COTTON/LINEN

40x60cm / 16x24" | 60x60cm / 24x24"



BUSH



BARK



BUSH



BARK

## BED THROWS:

COTTON/LINEN | 130x260cm / 51x102"



BUSH



BARK



# LOUNGE THROWS:

100% LINEN | 135x200cm / 53x79"



DESERT



STONE



GRAPHITE



# PATTERN WITH PRESENCE

# SCARVES:

100% LINEN | 42x210cm / 17x83"



DESERT



STONE



GRAPHITE

# MOHAIR COLLECTION:

Airy mohair, breathable linen, and the subtle shimmer of silk,  
this collection pairs softness with structure.

## THROWS:

MOHAIR/LINEN/SILK | 135x210cm / 52x82"



CHARCOAL



NATURAL

## WRAPS:

MOHAIR/LINEN/SILK | 65x210cm / 25x82"



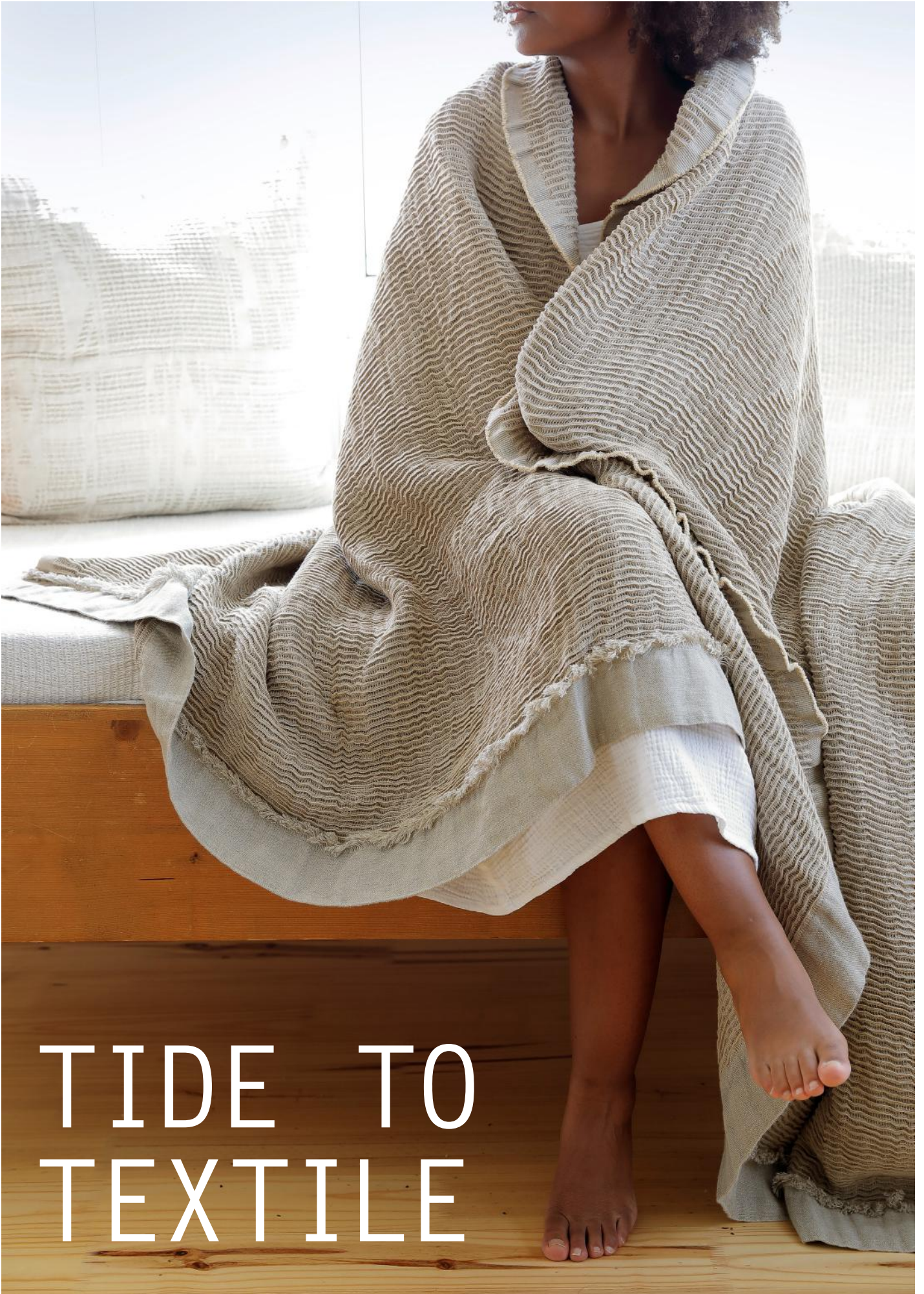
CHARCOAL



NATURAL



FINE &  
FEATHER  
LIGHT



# TIDE TO TEXTILE

## SEACELL THROWS:

SEACELL/LINEN | 130x210cm / 51x82"

Woven with linen and SeaCell™, a seaweed-based fibre that's cooling, calming, and kind to the skin.



# KELP FOREST COLLECTION:

Woven like currents, textured like tidepools, this collection is alive with the colour and movement of the sea.

## CUSHION COVERS:

COTTON/LINEN | 60x60cm / 24x24"



AMBER



CORAL



SEAGRASS

## BEDSPREADS:

COTTON/LINEN

DOUBLE 220x255cm / 87x100" | QUEEN 240x255cm / 95x100"  
KING 260x255cm / 102x100" | SUPER KING 300x240cm / 118x95"



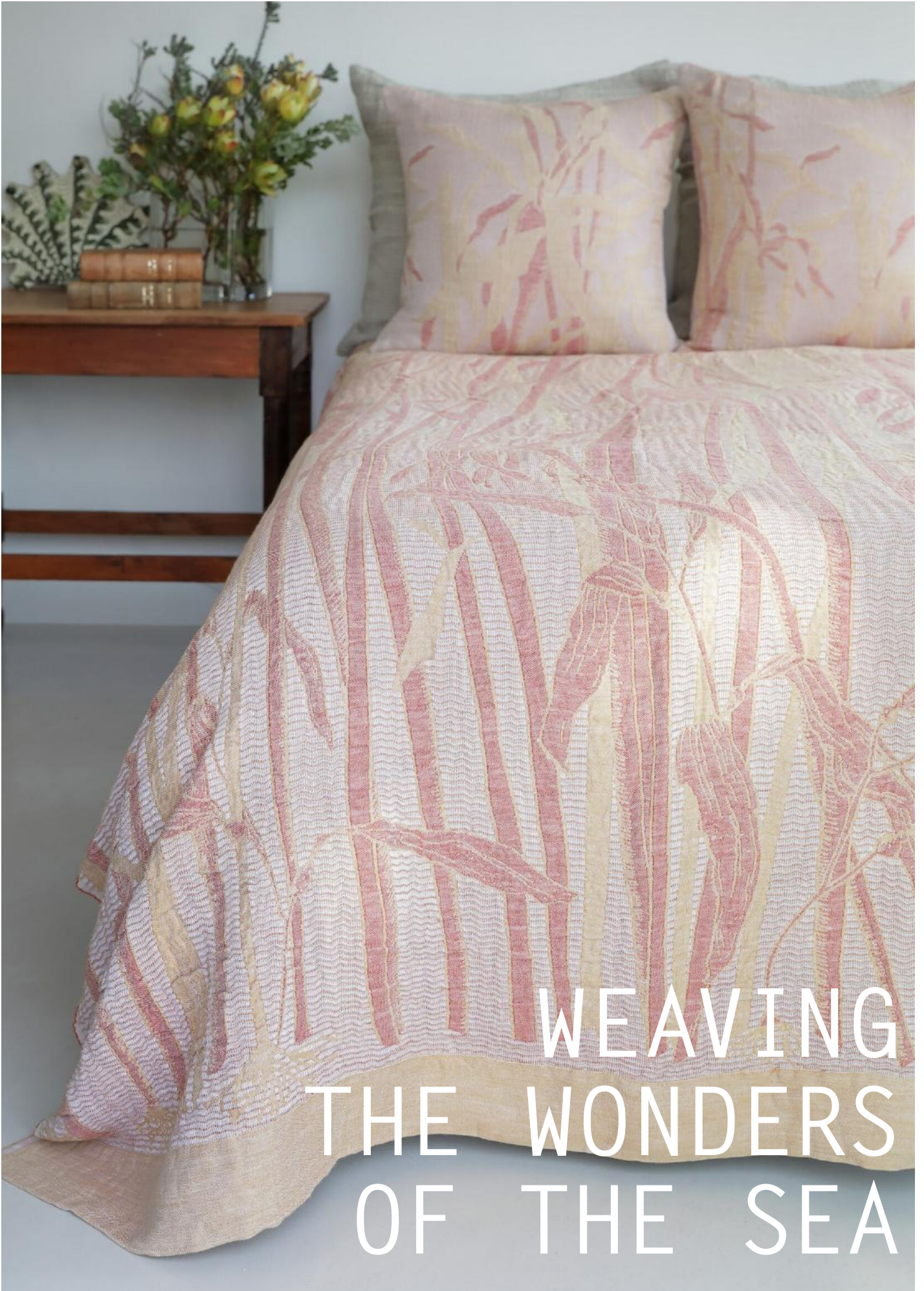
AMBER



CORAL



SEAGRASS



WEAVING  
THE WONDERS  
OF THE SEA

UV-PROOF  
& WATER-  
REPELLENT



# KUBA OUTDOOR COLLECTION:

Woven for open-air spaces. Made to withstand the elements.  
Designed to bring pattern and texture outside.

## CUSHION COVERS:

100% POLYESTER | 60x60cm / 24x24"



EVERGREEN



MIST



PLUM



TERRACOTTA

## CUSHION COVERS:

100% POLYESTER | 40x60cm / 16x24"



EVERGREEN



MIST



PLUM



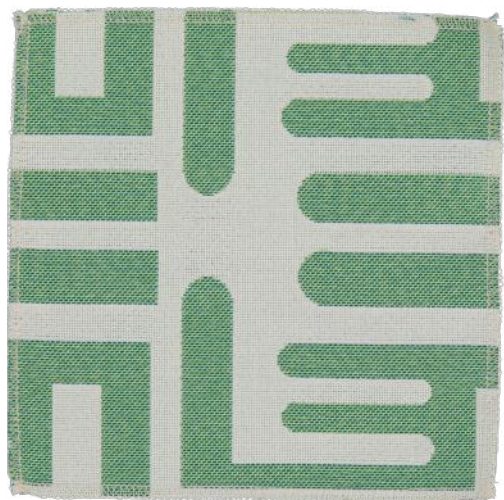
TERRACOTTA

# PATTERN MEETS DURABILITY



## UPHOLSTERY FABRIC: MOQ 25m

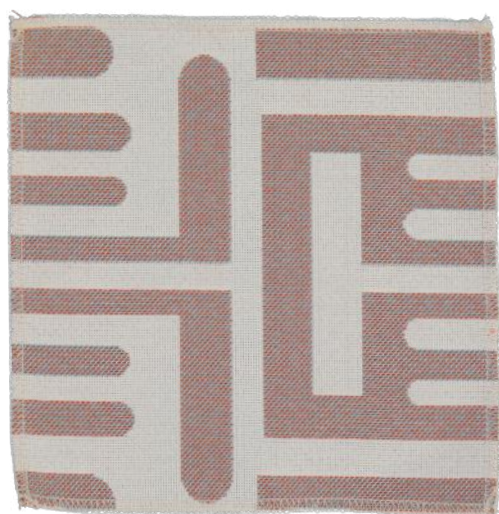
POLYESTER/ACRYLIC | Width: 145cm | Rub Count: 30000 Martindale  
Finish: Water & Soil Repellent | Light Fastness: 6-7



EVERGREEN



MIST



PLUM



TERRACOTTA





# TEA TOWEL COLLECTION

*Because every great  
chef needs a sidekick.*



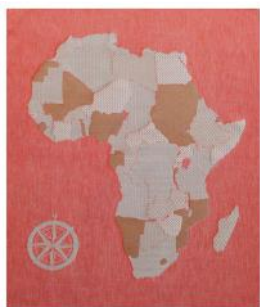
# AFRICA MAP COLLECTION:

A collection that turns the everyday tea towel into something striking, with Africa's iconic shape woven across bold palettes.



# TEA TOWELS :

100% COTTON | 45x62cm / 18x24"



CLEMENTINE  
/WHITE



GREEN  
/WHITE



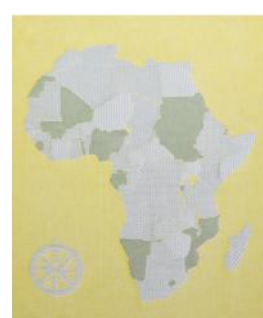
LILAC  
/WHITE



ORANGE  
/WHITE



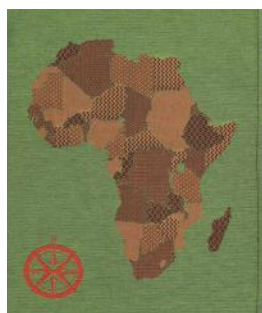
TEAL  
/WHITE



YELLOW  
/WHITE



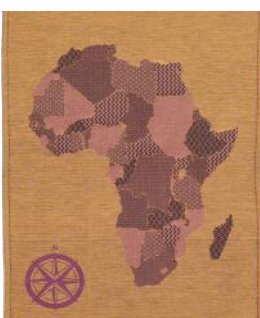
CLEMENTINE  
/BLACK



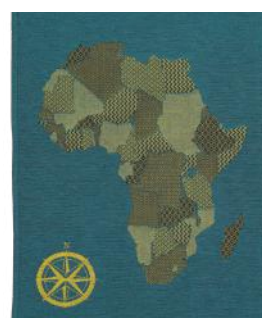
GREEN  
/BLACK



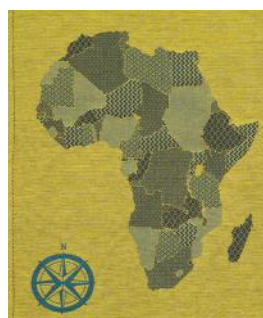
LILAC  
/BLACK



ORANGE  
/BLACK



TEAL  
/BLACK



YELLOW  
/BLACK

# CAPE CREATURES COLLECTION:

Inspired by the wild, whimsical world of the Cape and designed in collaboration with a local Cape Town artist.

## TEA TOWELS :

100% COTTON | 45x62cm / 18x24"



BABOON



DASSIE



FISH



CAPE COBRA



SHARK



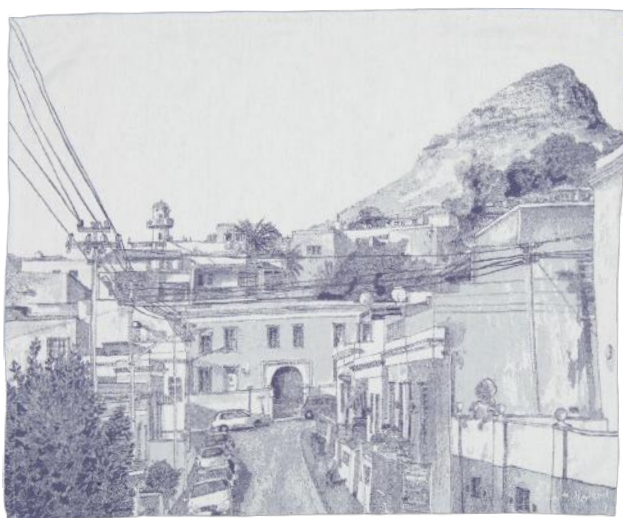
WHALE

# POSTCARD COLLECTION:

A woven celebration of Cape Town's most loved landmarks, designed in collaboration with a local Cape Town artist.

## TEA TOWELS :

100% COTTON | 62x74cm / 24x30"



BO KAAP



KITE SURFERS

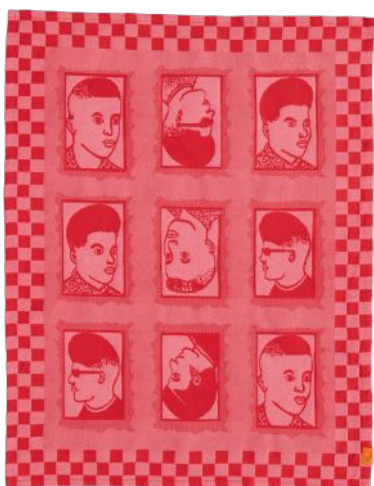


# BARBERSHOP COLLECTION:

A graphic motif rooted in African street culture, reimagined as a woven tea towel with bold character.

## TEA TOWELS:

100% COTTON | 45x62cm / 18x24"



PINK/RED



GREEN/RED



YELLOW/RED



BLUE/RED



# WILDLIFE COLLECTION:

A spirited nod to African wildlife, turning familiar silhouettes into everyday kitchen companions.

## TEA TOWELS:

100% COTTON | 45x62cm / 18x24"



RHINO  
GREEN



WILDLIFE  
GREEN



ZEBRA  
GREEN



ELEPHANT  
BARK



GIRAFFE  
BARK



LIONS  
BARK



ELEPHANT  
LIME



LEOPARD  
LIME



CROCODILE  
LIME

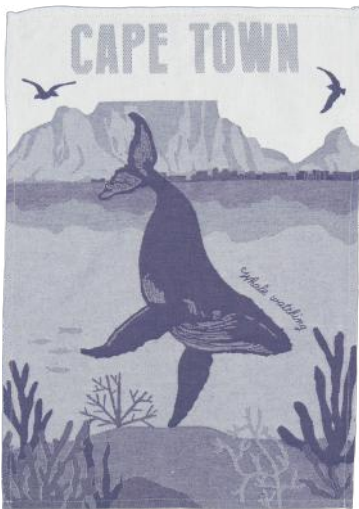


# CAPE TOWN COLLECTION:

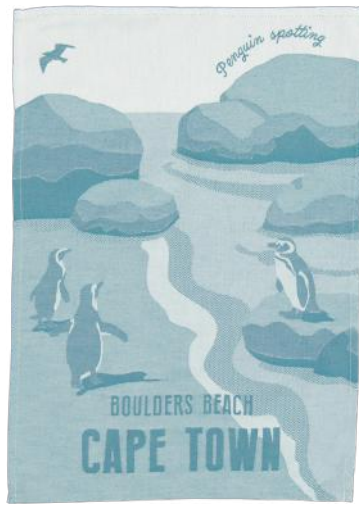
Drawn from the scenes that shape Cape Town, this collection weaves coastline, wildlife, and mountain into tea towels.

## TEA TOWELS:

100% COTTON | 45x62cm / 18x24"



WHALE WATCHING BLUE



BOULDERS BEACH TEAL

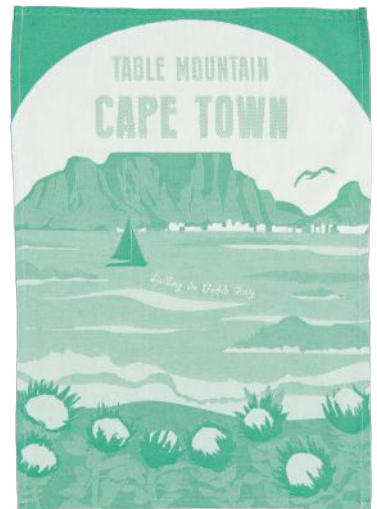


TABLE MOUNTAIN GREEN



African  
Jacquard



Rooted in Africa,  
designed for the world.

[www.africanjacquard.com](http://www.africanjacquard.com)