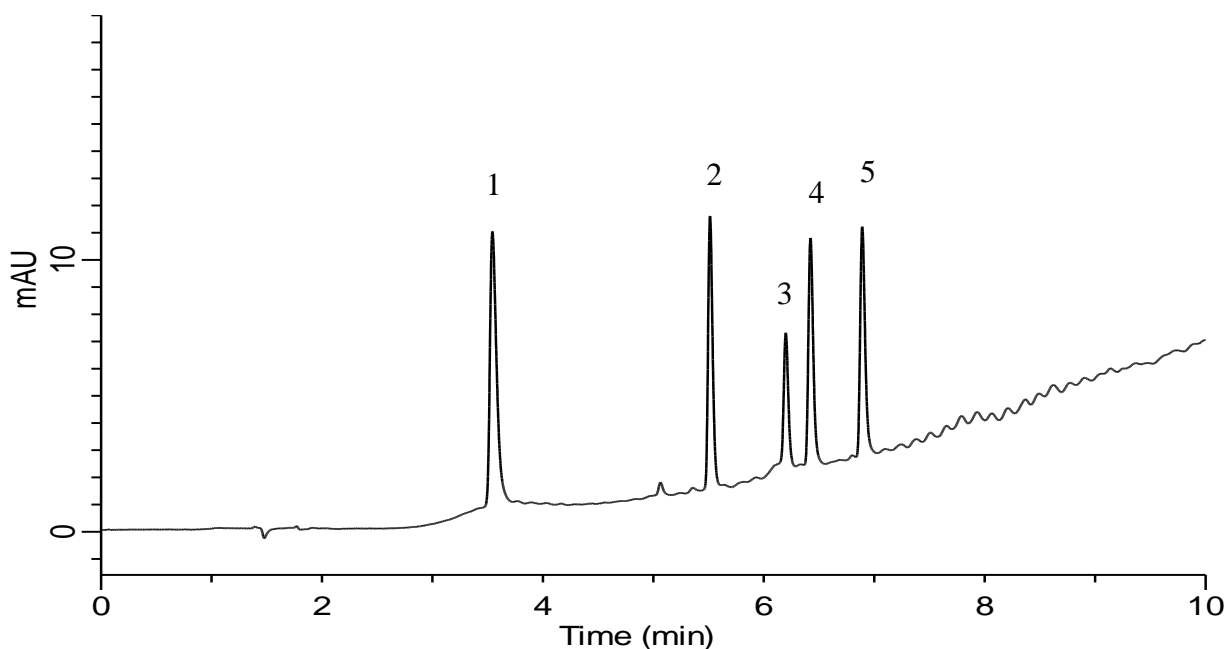


# InertSearch for LC

Inertsil Applications

## Analysis of Peptides

Data No. LB655-0806



### Conditions

**Column** : InertSustain C18  
(3  $\mu$  m HP, 150 x 2.1 mm I.D.)  
**Column Cat. No.** : 5020-14415  
**Eluent** : A) 10 mM HCOONH<sub>4</sub> + 0.1% HCOOH  
in (CH<sub>3</sub>CN/H<sub>2</sub>O = 90/10)  
B) 10 mM HCOONH<sub>4</sub> + 0.1% HCOOH  
in H<sub>2</sub>O

Time(min)	A(vol%)	B(vol%)
0	2	98
10	80	20

**Flow rate** : 0.3 mL/min  
**Col. Temp.** : 40 °C  
**Detection** : UV 254 nm  
**Injection Vol.** : 1  $\mu$  L  
**Sample** : Standard

### Analyte:

1. Gly-Tyr 500 mg/L  
2. Val-Tyr-Val 500 mg/L  
3. Angiotensin II (Human) 500 mg/L  
(Asp-Arg-Val-Tyr-Ile-His-Pro-Phe)  
4. Methionine-Enkephalin 500 mg/L  
(Tyr-Gly-Gly-Phe-Met)  
5. Leucine-Enkephalin 500 mg/L  
(Tyr-Gly-Gly-Phe-Leu)