



**Renaissance**  
Cooking Systems

America's Best Value in  
Outdoor Kitchen Equipment





# CUTLASS PRO GRILLS

Designed for the weekend cook,  
as well as the professional chef.

LIMITED  
**LIFETIME**  
WARRANTY

- 304 Stainless Steel Housing
- Cast Stainless Steel Burners
- High-Intensity Interior Halogen Lights  
\*120V Required
- Blue LED Illuminated Control Knobs  
\*120V Required
- Sure-Strike Ignition
- Briquette Flavor Trays
- Heat Zone Separators
- 20" Stainless/Ceramic Infrared  
Rear Burner
- Stainless Rotis Motor, Heavy Forks & Rod
- Analog Temperature Gauge
- Oversized Commercial Knobs
- Full Width Slide-Out Drip Tray
- Solid Stainless Steel Cooking Grids & Warming Rack
- Fuel Type is Field Convertible - NG/LP
- Optional **IR30** Infrared Sear Burner
- Optional **RSSG2** Griddle
- Optional **RSSG4** Dual Plated Griddle
- Optional **RST3042** Smoker Tray



# CUTLASS PRO SERIES

RENAISSANCE COOKING SYSTEMS



## 30" Cutlass Pro Grill

**RON30B**

3 Main Burners - 54,000 Total BTU's  
1 Back Burner - 12,500 BTU's  
840 Total Sq. In. Cooking Area

Cart: **RONMC** / Liner: **LJRON30**  
Cart Cover: **GC30C**  
Drop-In Cover: **GC30DI**



## 38" Cutlass Pro Grill

**RON38B**

4 Main Burners - 72,000 Total BTU's  
1 Back Burner - 12,500 BTU's  
1,034 Total Sq. In. Cooking Area

Cart: **RONKC** / Liner: **LJRON38**  
Cart Cover: **GC42C**  
Drop-In Cover: **GC38DI**



## 42" Cutlass Pro Grill

**RON42B**

4 Main Burners - 72,000 Total BTU's  
1 Back Burner - 12,500 BTU's  
1,142 Total Sq. In. Cooking Area

Cart: **RONJC** / Liner: **LJRON42**  
Cart Cover: **GC42C**  
Drop-In Cover: **GC42DI**

## GRILL CARTS



Shown RON30B & RONMC

# Performance with peace of mind.

## CUTLASS PRO GRILL CARTS

- 304 Stainless Steel
- Dual Fold-Down Side Shelves
- Double Access Doors
- Heavy-Duty Swivel Casters
- Propane Tank Slide-Out Tray





# PREMIER GRILLS

Share the experience with family, friends, or the whole neighborhood.

LIMITED  
**15 YEAR**  
WARRANTY

- Premium Stainless Steel Housing
- Sure-Strike Ignition with Manual Flash Tube
- Briquette Flavor Trays
- Stainless Steel Tubular Burners
- Solid Stainless Steel Cooking Grids & Warming Rack
- Analog Temperature Gauge
- "L" Models Include High-Intensity Interior Halogen Lights & blue LED Illuminated Control Knobs \*120V Required

- Oversized Commercial Knobs
- Full Width Slide-Out Drip Tray
- Fuel Type is Field Convertible - NG/LP
- Optional **IR2632** Infrared Sear Burner
- Optional **RSSG1A** Griddle
- Optional **RSSG3** Dual Plated Griddle
- Optional **RST2632** Smoker Tray
- Optional **RJC32ROTIS, RJC40ROTIS** Rotisserie Kits



# PREMIER SERIES

RENAISSANCE COOKING SYSTEMS



## 26" Premier Grill

**RJC26A**

3 Main Burners - 36,000 Total BTU's  
546 Total Sq. In. Cooking Area

Cart: **RJCSC** / Liner: **LJRJC26**

Cart Cover: **GC26C**

Drop-In Cover: **GC26DI**



## 32" Premier Grill

**RJC32A**

4 Main Burners - 48,000 Total BTU's  
1 Back Burner - 12,000 BTU's  
720 Total Sq. In. Cooking Area

Cart: **RJCMC** / Liner: **LJRJC32**

Cart Cover: **GC30C**

Drop-In Cover: **GC30DI**



## 40" Premier Grill

**RJC40A**

5 Main Burners - 60,000 Total BTU's  
1 Back Burner - 12,000 BTU's  
906 Total Sq. In. Cooking Area

Cart: **RJCCLC** / Liner: **LJRJC40**

Cart Cover: **GC40C**

Drop-In Cover: **GC42DI**

## PREMIER L SERIES

## GRILL CARTS



## 32" Premier Grill

**RJC32AL**

Upgraded with high-intensity interior halogen lights & blue LED illuminated control knobs.



## 40" Premier Grill

**RJC40AL**

Upgraded with high-intensity interior halogen lights & blue LED illuminated control knobs.



Shown RJC32AL & RJCMC

## PREMIER GRILL CARTS

- Stainless Steel Body
- Dual Side Shelves
- Double Access Doors
- Heavy-Duty Swivel Casters
- Propane Tank Holder





# PREMIER CHARCOAL GRILL

Grill with passion, savor the flavor – elevate your cooking with the timeless taste of a charcoal grill.

- Premium Stainless Steel Housing
- Solid Stainless Steel Cooking Grids & Warming Rack
- Vari-Adjust Charcoal Tray
- Full Width Slide-Out Drip Tray
- Adjustable Rear Vent
- Analog Temperature Gauge

LIMITED  
**15 YEAR**  
WARRANTY



# PREMIER CHARCOAL GRILL

RENAISSANCE COOKING SYSTEMS

## The Newest Addition to the Premier Lineup



### 32" Premier Charcoal Grill

**RJCC32A**

720 Total Sq. In. cooking area.

Cart: **RJCMC**

Cart Cover: **GC30C**

Drop-In Cover: **GC30DI**



## GRILL CART



Shown RJCC32A  
& RJCMC

# Timeless flavor. Premier performance.

### PREMIER CHARCOAL GRILL CART

- Stainless Steel Body
- Dual Side Shelves
- Double Access Doors
- Heavy-Duty Swivel Casters
- Propane Tank Holder





# SIDE BURNERS

Boost your outdoor kitchen's functionality with a side burner or Pro Power Burner for greater versatility in cooking and entertaining. Our cutting board and trim kit, RCBH, fits perfectly into a plunge cut, maximizing counter space.



## Cutting Board & Trim Kit

RCBH

Overall: **26 3/4"W x 26 3/4"D**  
304 stainless steel trim with a 1"  
thick HDPE cutting board..



# SIDE BURNERS

RENAISSANCE COOKING SYSTEMS



## Cutlass Pro Double Burners

**RDB1/\*RDB1EL**

Two 12,000 BTU brass burners,  
304 stainless steel with removable lid.

Liner: **LJRDB1** | Cover: **RDB1ELC**

\*Blue LED lights. Transformer included.



## Cutlass Pro Power Burner

**RSB3A**

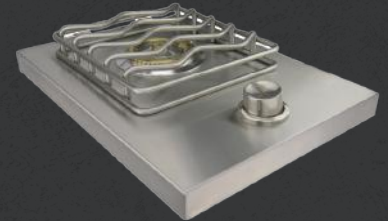
60,000 BTU Burners (one stainless steel & one brass),  
304 stainless steel with removable lid & wok ring.

Inner Brass Burner: 24,000 BTU

Outer Stainless Steel Burner: 36,000 BTU

Liner: **LJRSB3A** | Cover: **RDB1ELC**

Blue LED lights. Transformer included.



## Cutlass Single Burner

**RSB1**

12,000 BTU brass burner,  
304 stainless steel with  
removable lid.

Cover: **RSB1C**



## Premier Double Burners

**RJCSSB/\*RJCSSL**

Two 12,000 BTU brass burners,  
stainless steel with removable lid.

Liner: **LJRJCSSL** | Cover: **RDB1ELC**

\*Blue LED lights. Transformer included.



## Premier Pro Power Burners

**RJCSB3A/\*RJCSB3AL**

60,000 BTU Burners (one stainless steel & one brass),  
stainless steel with removable lid & wok ring.

Inner Brass Burner: 24,000 BTU

Outer Stainless Steel Burner: 36,000 BTU

Liner: **LJRJCSSL** | Cover: **RDB1ELC**

\*Blue LED lights. Transformer included.





# DOORS & DRAWERS

All our doors and drawers are 304 stainless steel, durable, weather-resistant, and low maintenance, making them perfect for outdoor kitchens. The non-protruding handles offer a sleek, modern design with no exposed handles. A long-lasting, practical, and stylish choice for any outdoor kitchen.

LIMITED  
**LIFETIME**  
WARRANTY



# DOORS & DRAWERS

RENAISSANCE COOKING SYSTEMS

LIMITED  
LIFETIME  
WARRANTY

*Vertical and horizontal doors are ideal for under sinks, grills, and side burners providing extra storage and easy access for appliance maintenance.*



## Vertical Door

**VDVISCL/VDVISCR**

Overall: **17"W x 22"H**

Soft close.

VDVISCL (Swing Left)

VDVISCR (Swing Right)



## Large Vertical Door

**VDV2SCL/VDV2SCR**

Overall: **20"W x 27"H**

Soft close.

VDV2SCL (Swing Left)

VDV2SCR (Swing Right)



## Horizontal Door

**VDHISCL/VDHISCR**

Overall: **27"W x 20"H**

Soft close.

VDHISCL (Swing Left)

VDHISCR (Swing Right)



## Dry Pantry

**VDPI**

Overall: **33"W x 21" D x 22"H**

Fully enclosed, adjustable shelf.



## Double Door

**VDDISC**

Overall: **33"W x 22"H**

Soft close.



## Large Double Door

**VDD2SC**

Overall: **45"W x 22"H**

Soft close.



## Double Door

**VDD3SC**

Overall: **33"W x 16"H**

Low Profile. Soft close.



## Large Double Door

**VDD4**

Overall: **45"W x 16"H**

Low Profile.



## Warming Drawer

**RWD1**

Overall: **36"W x 21"D x 11 1/2"H**

Fully enclosed. Temperature ranges 50°F - 230°F. 120V required.

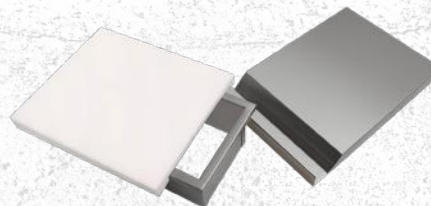


## Paper Towel Holder

**VTH1**

Overall: **17"W x 9"D x 11"H**

Great addition to all kitchens.



## Trash Chute & Cutting Board

**VTC1**

Overall: **10 1/4"W x 15 1/4"D**  
Plastic cutting board, stainless chute & removable lid.





# DOORS & DRAWERS

RENAISSANCE COOKING SYSTEMS

LIMITED  
LIFETIME  
WARRANTY

Upgrade your outdoor kitchen with sleek, durable stainless steel doors & drawers designed for style and performance.



## Double Drawer

VDR1

Overall: 17"W x 20 1/2"D x 22"H

Fully enclosed, soft close, two drawer unit.



## Triple Drawer

VTD3

Overall: 17"W x 20 1/2"D x 30 1/4"H

Fully enclosed, soft close, three drawer unit.



## Two Drawer Combo

VTHC1

Overall: 17"W x 20 1/2"D x 30 1/4"H

Fully enclosed, soft close two drawer unit with paper towel holder.



## Spice Drawer

VSD1

Overall: 13 7/8"W x 19 3/4"D x 26 1/2"H

Store your spices and large cooking tools in the fully enclosed, soft close drawer unit.



## Two Drawer/LP Tank Drawer

VDCL1

Overall: 33"W x 20 1/2"D x 22"H

Two fully enclosed soft close drawers, and an LP tank drawer.



## Two Drawer/Door

VDCISCL/VDCISCR

Overall: 33"W x 20 1/2"D x 22"H

Two fully enclosed soft close drawers and soft close door.

VDCISCL (Swing Left)

VDCISCR (Swing Right)



## Three Drawer/Door

VDC2SCL/VDC2SCR

Overall: 32 3/4"W x 20 1/2"D x 22"H

Three fully enclosed soft close drawers and soft close door.

VDC2SCL (Swing Left)

VDC2SCR (Swing Right)



## Charcoal/Pellet Drawer

VDCP1

Overall: 14"W x 25 1/2"D x 26 1/2"H

Includes one 8 gallon dry-seal plastic bin, perfect for storing wood pellets or charcoal.



# DOORS & DRAWERS

RENAISSANCE COOKING SYSTEMS



*Our trash drawers pair perfectly with the trash chute and cutting board.*  
(VTC1 on page 10)



## Narrow Trash Drawer

VTD4

Overall: **14"W x 19 3/4"D x 26 1/2"H**  
Includes one 13 gallon plastic bin.



## Double Trash Drawer

VTD2

Overall: **20"W x 27 1/4"D x 27"H**  
Includes two 13 gallon plastic bins.  
Trash/recycling.



## Trash/LP Bottle Drawer

VTD1

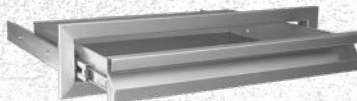
Overall: **20"W x 16"D x 27"H**  
Includes one 13 gallon plastic bin.



## Drop-In Cooler

VIC2

Overall: **24"W x 18"D**  
Fully insulated, includes  
strainer & plug.



## Accessory/Tool Drawer

VDU1

Overall: **25 1/2"W x 20"D x 6"H**  
For storing cooking utensils.  
Soft Close.



## Accessory/Tool Drawer

VDU2

Overall: **30"W x 21 1/4" D x 15"H**  
Fully enclosed soft close  
drawer. Perfect for storing  
oversized tools and utensils.



## Kamado Drawer

VLSD1

Overall: **31"W x 27 1/2"D x 19"H**  
Fully enclosed. Supports up  
to a 600 lb. Kamado grill.

Shown VDCL1



# Refrigeration

Enhance your outdoor kitchen with our refrigeration options. Our ice makers produce ice in various forms, the wine cooler offers dual-zone temperature control, and the double drawer fridge provides space saving storage. These high performance units combine sleek design and practicality.

LIMITED  
**7 YEAR**  
WARRANTY



## 15" Narrow Refrigerator

**REFR5**

Trim Kit: **RTR5**

Overall: **15"W x 25"D x 34"H**  
3.2 Cu. Ft., 304 stainless steel locking glass door, interior LED light, adjustable shelves & thermostat.



## 15" Wine Cooler

**RWC1**

Trim Kit: **RTR5**

Overall: **15"W x 25"D x 34"H**  
3.2 Cu. Ft., 304 stainless steel locking glass door, dual interior lights, dual temperature zones, wine/beer storage, adjustable wooden shelves.



# REFRIGERATION

RENAISSANCE COOKING SYSTEMS

LIMITED  
7 YEAR  
WARRANTY



## 20" Refrigerator

**REFR1A**

Trim Kit: **RTR1A**

Overall: **20"W x 20 3/4"D x 32 1/2"H**

4.5 Cu. Ft., reversible stainless steel locking door, interior light, one drawer, automatic defrost, can holder, adjustable shelves & thermostat.

Optional door upgrades: SSFDLB/SSFDLRB



## 24" Refrigerator

**REFR2A/\*REFR2B**

Trim Kit: **RTR2**

Overall: **24"W x 22 3/4"D x 32"H**

5 Cu. Ft., stainless steel, interior LED light, locking door, adjustable shelves & thermostat.

**Certified for Outdoor Use.**

\*Optional glass front.



## 15" Ice Maker

**REFR3**

Trim Kit: **RTR3**

Overall: **15"W x 25"D x 33"H**

Daily Ice Production: **50 lbs.**

Ice Storage Capacity: **26 lbs.**

Stainless steel, reversible door.

**Certified for Outdoor Use.**

Optional: RPUMP



## 15" Nugget Ice Maker

**REFR3A**

Overall: **15 1/8"W x 21 3/4"D x 34 1/8"H**

Daily Ice Production: **55 lbs.**

Ice Storage Capacity: **26 lbs.**

Reversible stainless steel door, ice shovel included, automatic shut off.

**Certified for Outdoor Use.**

Optional: RPUMP



## 24" Two Drawer Refrigerator

**REFR4**

Trim Kit: **RTR4**

Overall: **24"W x 25"D x 34"H**

5.3 Cu. Ft., two drawer, stainless steel, interior lights & LED controls.

**Certified for Outdoor Use.**



## Door Upgrade Kits

**SSFDLB/SSFDLRB**

Upgrade your fridge with this stainless steel door sleeve, featuring a sleek vertical handle.

SSFDLB (Swing Left)  
SSFDLRB (Swing Right)

Fits: **REFR1A**



## Trim Kits

**See Fridge**

304 stainless steel. Gives your outdoor fridge a polished, professional finished look.





# SINKS

An outdoor sink is a barbecuer's best friend and a key part of any outdoor kitchen. It's perfect for prepping food, filling pots for boiling, and cleaning up greasy tools and dishes—saving trips to the indoor kitchen.

LIMITED  
**LIFETIME**  
WARRANTY



# SINKS

RENAISSANCE COOKING SYSTEMS

LIMITED  
LIFETIME  
WARRANTY



## Stainless Sink

**RSNK1**

Overall: **15"W x 15"D**

Double faucet, strainer,  
23 gauge stainless, overmount.



## Stainless Sink

**RSNK2**

Overall: **23 1/4"W x 18"D**

Single handle pull-down faucet, strainer,  
360° swing angle, 18 gauge stainless,  
undermount or overmount, hot & cold water.



## Stainless Farmhouse Sink

**RSNK3A**

Overall: **32 1/4"W x 20 3/4"D**

Single handle pull-down faucet, strainer,  
grate, 360° swing angle, 18 gauge, 304  
stainless steel, hot & cold water.



## Cutting Board Sink Cover

**RCB1/RCB2/RCB3**

RCB1 Overall: **12 7/8"W x 10 7/8"D**

RCB2 Overall: **23 1/4"W x 18 1/4"D**

RCB3 Overall: **36"W x 24"D**

Covers: **RSNK1/RSNK2/RSNK3**

Synthetic 3/8" thick black  
cutting board.

*The RCS cutting boards maximize outdoor kitchen space by fitting over plunge cuts or sinks, allowing you to fully utilize your kitchen without sacrificing counter area.*

Shown RSNK2 & RCB2





# ACCESSORIES

## RENAISSANCE COOKING SYSTEMS



### Access Doors w/ Lock

**RADD66 / RAD88**

Overall: **6"W x 6"H / 8"W x 8" H**  
304 stainless steel, recessed with screwdriver twist lock.



### Timer Box & Mount

**RTB1**

Overall: **8 3/4"W x 8 3/4"H**  
304 stainless steel, recessed with screwdriver twist lock in door to protect the RGT1 timer.



### Timer Mounting Plate

**RTB1P**

Overall: **5"W x 6 1/2"H**  
304 stainless steel, used to mount RGT1 timer to a wall or outdoor kitchen structure.



### Gas Timer

**RGT1**

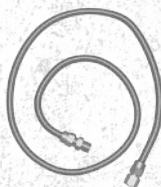
1 hour gas timer, twist to set any amount of time for gas flow, up to 1 hour.



### Outdoor Kitchen Vent

**RVNT1**

To help ensure safety of your outdoor kitchen, vents are required every 4 running feet. These help vent the built up heat and possible gases in your outdoor kitchen cabinet.



### Stainless Steel Flex Hose

**SSFLEX8436 / SSFLEX8448**

To connect your gas grill or side burner to your gas supply. 1/2" flare fittings. Available in two lengths, 36" & 48".



### Propane Hose & Regulator

**RONHK**

3/8" flare fitting on one end & POL to screw on the outside threads of a propane tank. Low pressure, preset.



### Condensate Pump

**RPUMP**

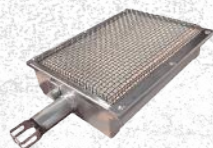
For use with REFR3 and REFR3A when gravity feed drain is not available.



### Smoker Tray

**RST2632 / RST3042**

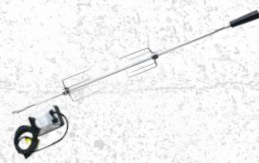
Add some extra flavor to your food by adding your favorite wood chips. This will allow you to get that great wood flavor when cooking with gas.



### Infrared Sear Burner

**IR2632 / IR30**

Sear burners replace the left main burner in your grill to turn up the heat and get those perfect sear marks. One per grill.



### Rotisserie Kit

**RJC32ROTIS / RJC40ROTIS**

Upgrade your Premier Grill with a rotisserie kit. Includes rotisserie rod, handle, 2 forks, balance and motor.



### Covers

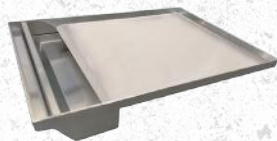
Keep your grill or side burner safe from the outdoor elements. Crack resistant, 2-ply vinyl, UV protection, flannel inside.

**See grill or side burner for item #**



# ACCESSORIES

## RENAISSANCE COOKING SYSTEMS



### Cutlass Pro Series Dual Plate Griddle

**RSSG4**

Overall: **14 1/4"W x 19 3/4"D**

304 stainless steel cooking surface, cast-iron bonded base plate, removable grease tray.



### Cutlass Pro Series Griddle

**RSSG2**

Overall: **10 1/4"W x 19 1/2"D**

304 stainless steel, dual handles, grease tray, raised edges.



Shown Cast-Iron Bonded Base

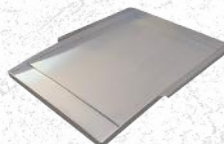


### Premier Series Dual Plate Griddle

**RSSG3**

Overall: **14 1/4"W x 17 3/4"D**

304 stainless steel cooking surface, cast-iron bonded base plate, dual handles, raised edges, removable grease tray.



### Premier Series Griddle

**RSSG1A**

Overall: **14 1/2"W x 17 7/8"D**

304 stainless steel, grease tray, raised edges.



### Insulated Liners

The insulated liner is required when installing the grills or side burners into a cabinet constructed with combustible materials. Double-walled stainless steel construction for maximum strength & protection.

**See grill or side burner for item #**



### Vent Hood

**RVH36A / RVH48A**

RVH36A Overall: **36"W x 30"D x 18"H**

RVH48A Overall: **48"W x 30"D x 18"H**

Double-lined 304 stainless steel, 1,000 CFM per blower, fully adjustable variable speed motors, dimmable halogen lights.

RVH36A: 1 Blower (1,000 CFM)

RVH48A: 2 Blowers (2,000 CFM)

\*120V Required



### Vent Hood Duct Cover

**RVH36DCA / RVH48DCA**

RVH36DCA Overall: **36"W x 15"D x 12"H**

RVH48DCA Overall: **48"W x 15"D x 12"H**

Extends the height of your range hood, enclosing the space between the vent hood and the ceiling or soffit for a clean, finished look.



### Vent Hood Spacer

**RVH48SP8A**

RVH36SP4A: **36"W x 4"D x 18"H**

RVH36SP8A: **36"W x 8"D x 18"H**

RVH48SP4A: **48"W x 4"D x 18"H**

RVH48SP8A: **48"W x 8"D x 18"H**

Extends the hood from the wall to give better coverage over the grill when needed.



**Warranty** – All RCS Cutlass Pro Series Grills and Cutlass Pro Series side burners, sinks, briquette trays, as well as all doors and drawers, are warranted to be free from manufacturer defects for the lifetime of the original owner. All RCS Premier Series grills and Premier Series side burners are warranted to be free from manufacturer defects for 15 years to the original owner. All RCS refrigeration products are warranted to be free from manufacturer defects for 7 years to the original owner. All other products carry a one-year warranty to the original owner. This warranty excludes normal surface corrosion, discoloration, surface scratches and surface rust that may occur. Improper maintenance, salt spray, chemicals, pesticides will affect the look and integrity of the components of these products. RCS will not be responsible for any damage caused as a result of not following owner’s manual instructions. This non-transferable warranty is limited to the replacement of original (one-time) defective parts, does not include shipping and labor to remove or install replacement parts, if necessary. The owner must retain and submit their original receipt with any warranty claim to receive warranty parts. The warranty applies to the original owner only. Coverage is for residential use only; no commercial applications apply. No registration required. This RCS warranty is effective for product sales beginning April 14, 2025. For service assistance, please reach out to us at the email address below.

Model NG & LP	Cut Out (Inches)		
	Width	Depth	Height
LJRDB1	14 3/8	20 1/4	9 1/4
LJRJC26	26	22	9 5/8
LJRJC32	33	22	9 5/8
LJRJC40	40 1/2	22	9 1/4
LJRJCSSB	12 7/8	22 1/8	9 5/8
LJRON30	35 1/2	21 1/4	11 3/4
LJRON38	43 5/8	21 1/4	12 1/4
LJRON42	47 1/2	21 1/4	11 3/4
LJRSB3A	16	20 1/8	10 5/8
LJRJCSB3A	16	20	9
RAD66	6 1/2	-	6 3/8
RAD88	8 5/8	-	8 3/8
RCBH	27 1/8	27 1/8	-
RDB1   RDB1EL	12	19	8
REFR1A	20 1/4	22	33
REFR2A   REFR2B	23 5/8	23	32 1/2
REFR3	15	24	33 1/2
REFR3A	15 1/4	22 1/2	34 1/4
REFR4	24	23 3/4	34 1/4
REFR5	15 1/4	24	34 1/4
RJC26A	23 1/2	21 1/4	8 1/4
RJC32A   RJC32AL	30 5/8	21	8 1/4
RJC40A   RJC40AL	37 3/4	21	8 1/4

Model NG & LP	Cut Out (Inches)		
	Width	Depth	Height
RJCC32A	30 5/8	20 1/2	8 1/4
RJCSB3A   RJC3B3AL	14	19	8
RJCSSB   RJC3SBL	10 3/4	21	8
RON30B	33	20	11
RON38B	41 1/4	20	11
RON42B	45	20	11
RSB1	7 3/4	15 1/2	-
RSB3A	14	18 5/8	9 1/4
RSNK1	14 3/8	14 3/8	-
RSNK2	21	15 3/4	-
RSNK3A	30 3/4	17 3/8	8
RTB1	6 1/2	-	6 1/2
RTR1A	20 1/2	-	33
RTR2	24 1/2	-	33 1/4
RTR3	16	-	34
RTR4	25	-	34 1/2
RTR5	15 3/4	-	34 3/4
RVNT1	12 1/2	-	3 1/2
RWC1	15 1/4	24	34 1/4
RWD1	34 1/2	21	10 1/8
VDC1SCL   VDC1SCR	30 1/2	22	19 1/2
VDC2SCL   VDC2SCR	30 1/2	-	19 1/2
VDCL1	30 1/2	20 3/4	19 1/2

Model NG & LP	Cut Out (Inches)		
	Width	Depth	Height
VDCP1	11 1/2	25 1/4	24
VDD1SC	30 1/2	-	19 1/2
VDD2SC	42 1/2	-	19 1/2
VDD3SC	30 1/2	-	13 1/4
VDD4	42 1/4	-	13 1/4
VDH1SCL   VDH1SCR	24 1/2	-	17 1/2
VDP1	30 1/2	21	19 1/2
VDR1	15	22	19 1/2
VDU1	24	21	4
VDU2	27 7/8	21	12 1/2
VDV1SCL   VDV1SCR	14 1/2	-	19 1/2
VDV2SCL   VDV2SCR	17 1/2	-	24 1/2
VIC2	23 1/4	17 1/4	13
VLSD1	30 1/4	27 1/2	19
VSD1	11 1/2	19 1/2	24
VTC1	6 1/2	8	4
VD1	17 7/8	17 1/2	25
VD2	17 5/8	27 1/2	24 5/8
VD3	15 1/2	22	27 3/4
VD4	11 3/4	19 1/2	24
VTH1	14 1/2	8 1/2	8 1/2
VTHC1	15 1/2	22	27 3/4



All dimensions are provided for reference purposes only and are subject to change without prior notice. For the latest measurements and specifications, please visit [RCSGasGrills.com](https://RCSGasGrills.com). For more information on cooking, using, or servicing your new RCS product, feel free to check our website at [RCSGasGrills.com](https://RCSGasGrills.com) or contact us at [Info@RCSGasGrills.com](mailto:Info@RCSGasGrills.com).