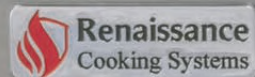


*America's Best Value in
Outdoor Kitchen Equipment*



Renaissance Cooking Systems



AMERICAN RENAISSANCE GRILLS



- 304 Stainless Steel Housing
- 304 Tubular Stainless Burners
- 25,000 BTU's Per Burner
- High-Intensity Interior Halogen Lights
*120V Required
- Blue LED Illuminated Control Knobs
*120V Required
- Sure-Strike Ignition
- Briquette Flavor Trays
- Oversized Commercial Knobs
- Ball Bearing Slide Out Drip Tray
- Analog Temperature Gauge
- Exclusive 304 Solid Stainless Steel Square Searmarx Grids
- Fold-Away Stainless Steel Warming Rack
- Rolled and Polished Seams
- 10" Deep Body Design
- Dual-Wall Body
- Easy-Lift Grill Lid
- Fuel Type is Field Convertible - NG/LP
- Optional **AIR303642** Infrared Sear Burner
- Optional **ASG1** Stainless Steel Griddle
- Optional **ASG2** Dual Plated Griddle
- Optional **ARG30ROTIS, ARG36ROTIS, ARG42ROTIS** Rotisserie Kits

ARG SERIES

RENAISSANCE COOKING SYSTEMS



30" American Renaissance Grill

ARG30

2 Burners - 50,000 Total BTU's
754 Total Sq. In. Cooking Area

Cart: **ARG30CART** / Liner: **LJARG30**
Cart Cover: **GCARG30C**
Drop-In Cover: **GCARG30**



36" American Renaissance Grill

ARG36

3 Burners - 75,000 Total BTU's
911 Total Sq. In. Cooking Area

Cart: **ARG36CART** / Liner: **LJARG36**
Cart Cover: **GCARG36C**
Drop-In Cover: **GCARG36**



42" American Renaissance Grill

ARG42

3 Burners - 75,000 Total BTU's
1,082 Total Sq. In. Cooking Area

Cart: **ARG42CART** / Liner: **LJARG42**
Cart Cover: **GCARG42C**
Drop-In Cover: **GCARG42**

CARTS & SIDE BURNERS



Shown ARG36
& ARG36CART

ARG GRILL CARTS

- 304 Stainless Steel
- Dual Drawers*
- Dual Fold-Down Side Shelves
- Heavy-Duty Locking Swivel Casters
- Single Access Door*
- Propane Tank Holder

*30" cart features double access doors



Double Side Burner

ASBSSB

Liner: **LJASBSSB** | Cover: **ASBSSBC**

Two 18,000 BTU brass burners, removable lid, blue LED illuminated control knobs & power transformer included.



Pro Burner Side Burner

ASB3

Liner: **LJASB3** | Cover: **ASB3C**

One 24,000 BTU brass burner & one 36,000 BTU stainless burner, removable lid, wok ring, blue LED illuminated control knobs & power transformer included.

SIDE BURNER FEATURES

- 304 Stainless Steel
- Sure-Strike Ignition
- Blue LED Illuminated Control Knobs
- Upgraded, Oversized Commercial Knobs
- Rolled and Polished Seams
- Slide Out Drip Tray
- 120V required



CUTLASS PRO GRILLS

Designed for the weekend cook,
as well as the professional chef.

- 304 Stainless Steel Housing
- Cast Stainless Steel Burners
- High-Intensity Interior Halogen Lights
*120V Required
- Blue LED Illuminated Control Knobs
*120V Required
- Sure-Strike Ignition
- Briquette Flavor Trays
- Heat Zone Separators
- 20" Stainless/Ceramic Infrared
Rear Burner
- Stainless Rotis Motor, Heavy Forks & Rod
- Analog Temperature Gauge
- Oversized Commercial Knobs
- Full Width Slide-Out Drip Tray
- Solid Stainless Steel Cooking Grids & Warming Rack
- Fuel Type is Field Convertible - NG/LP
- Optional **IR30** Infrared Sear Burner
- Optional **RSSG2** Griddle
- Optional **RSSG4** Dual Plated Griddle
- Optional **RST3042** Smoker Tray

LIMITED
LIFETIME
WARRANTY

CUTLASS PRO SERIES

RENAISSANCE COOKING SYSTEMS



30" Cutlass Pro Grill

RON30B

3 Main Burners - 54,000 Total BTU's
1 Back Burner - 12,500 BTU's
840 Total Sq. In. Cooking Area

Cart: **RONMC** / Liner: **LJRON30**
Cart Cover: **GC30C**
Drop-In Cover: **GC30DI**



38" Cutlass Pro Grill

RON38B

4 Main Burners - 72,000 Total BTU's
1 Back Burner - 12,500 BTU's
1,034 Total Sq. In. Cooking Area

Cart: **RONKC** / Liner: **LJRON38**
Cart Cover: **GC42C**
Drop-In Cover: **GC38DI**



42" Cutlass Pro Grill

RON42B

4 Main Burners - 72,000 Total BTU's
1 Back Burner - 12,500 BTU's
1,142 Total Sq. In. Cooking Area

Cart: **RONJC** / Liner: **LJRON42**
Cart Cover: **GC42C**
Drop-In Cover: **GC42DI**

GRILL CARTS



Shown RON30B & RONMC

Performance with peace of mind.

CUTLASS PRO GRILL CARTS

- 304 Stainless Steel
- Dual Fold-Down Side Shelves
- Double Access Doors
- Heavy-Duty Swivel Casters
- Propane Tank Slide-Out Tray



PREMIER GRILLS

Share the experience with family, friends, or the whole neighborhood.

- Premium Stainless Steel Housing
- Sure-Strike Ignition with Manual Flash Tube
- Briquette Flavor Trays
- Stainless Steel Tubular Burners
- Solid Stainless Steel Cooking Grids & Warming Rack
- Analog Temperature Gauge
- "L" Models Include High-Intensity Interior Halogen Lights & blue LED Illuminated Control Knobs *120V Required

- Oversized Commercial Knobs
- Full Width Slide-Out Drip Tray
- Fuel Type is Field Convertible - NG/LP
- Optional **IR2632** Infrared Sear Burner
- Optional **RSSG1** Griddle
- Optional **RSSG3** Dual Plated Griddle
- Optional **RST2632** Smoker Tray
- Optional **RJC32ROTIS, RJC40ROTIS** Rotisserie Kits

LIMITED
15 YEAR
WARRANTY

PREMIER SERIES

RENAISSANCE COOKING SYSTEMS



26" Premier Grill

RJC26A

3 Main Burners - 36,000 Total BTU's
546 Total Sq. In. Cooking Area

Cart: **RJCSC** / Liner: **LJRJC26**
Cart Cover: **GC26C**
Drop-In Cover: **GC26DI**



32" Premier Grill

RJC32A

4 Main Burners - 48,000 Total BTU's
1 Back Burner - 12,000 BTU's
720 Total Sq. In. Cooking Area

Cart: **RJCMC** / Liner: **LJRJC32**
Cart Cover: **GC30C**
Drop-In Cover: **GC30DI**



40" Premier Grill

RJC40A

5 Main Burners - 60,000 Total BTU's
1 Back Burner - 12,000 BTU's
906 Total Sq. In. Cooking Area

Cart: **RJCLC** / Liner: **LJRJC40**
Cart Cover: **GC40C**
Drop-In Cover: **GC42DI**

PREMIER L SERIES



32" Premier Grill

RJC32AL

Upgraded with high-intensity interior halogen lights & blue LED illuminated control knobs.



40" Premier Grill

RJC40AL

Upgraded with high-intensity interior halogen lights & blue LED illuminated control knobs.



Shown **RJC32AL** & **RJCMC**

PREMIER GRILL CARTS

- Stainless Steel Body
- Dual Side Shelves
- Double Access Doors
- Heavy-Duty Swivel Casters
- Propane Tank Holder



PREMIER CHARCOAL GRILL

Grill with passion, savor the flavor – elevate your cooking with the timeless taste of a charcoal grill.

- Premium Stainless Steel Housing
- Solid Stainless Steel Cooking Grids & Warming Rack
- Vari-Adjust Charcoal Tray
- Full Width Slide-Out Drip Tray
- Adjustable Rear Vent
- Analog Temperature Gauge

LIMITED
15 YEAR
WARRANTY

The Newest Addition to the Premier Lineup



32" Premier Charcoal Grill

RJCC32A

720 Total Sq. In. cooking area.

Cart: **RJCMC**

Cart Cover: **GC30C**

Drop-In Cover: **GC30DI**



Shown RJCC32A
& RJCMC

GRILL CART

PREMIER CHARCOAL GRILL CART

- Stainless Steel Body
- Dual Side Shelves
- Double Access Doors
- Heavy-Duty Swivel Casters
- Propane Tank Holder



SIDE BURNERS

Boost your outdoor kitchen's functionality with a side burner or Pro Power Burner for greater versatility in cooking and entertaining. Our cutting board and trim kit (RCBH on page 15) fit perfectly into a plunge cut, maximizing counter space without sacrificing area.

SIDE BURNERS

RENAISSANCE COOKING SYSTEMS



Cutlass Pro Double Burners

RDB1/*RDB1EL

Two 12,000 BTU brass burners,
304 stainless steel with removable lid.

Liner: **LJRDB1** | Cover: **RDB1ELC**

*Blue LED lights. Transformer included.



Cutlass Pro Power Burner

RSB3A

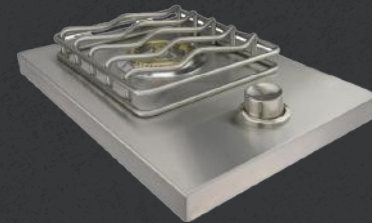
60,000 BTU Burners (one stainless steel & one brass),
304 stainless steel, removable lid, wok ring.

Inner Brass Burner: 24,000 BTU

Outer Stainless Steel Burner: 36,000 BTU

Liner: **LJRSB3A** | Cover: **RDB1ELC**

Blue LED lights. Transformer included.



Cutlass Single Burner

RSB1

12,000 BTU brass burner,
304 stainless steel with
removable lid.

Cover: **RSB1C**



Premier Double Burners

RJCSSB/*RJCSSBL

Two 12,000 BTU brass burners,
stainless steel with removable lid.

Liner: **LJRJCSSB** | Cover: **RDB1ELC**

*Blue LED lights. Transformer included.



Premier Pro Power Burners

RJCSB3A/*RJCSB3AL

60,000 BTU Burners (one stainless steel & one brass),
stainless steel with removable lid & wok ring.

Liner: **LJRJCSB3A** | Cover: **RDB1ELC**

*Blue LED lights. Transformer included.

DOORS & DRAWERS

RENAISSANCE COOKING SYSTEMS



All our doors and drawers are 304 stainless steel, durable, weather-resistant, and low-maintenance, making them perfect for outdoor kitchens. The non-protruding handles offer a sleek, modern design with no exposed handles. A long-lasting, practical, and stylish choice for any outdoor kitchen.



Double Drawer

VDR1

Overall: 17"W x 20 1/2"D x 22"H

Fully enclosed, soft close, two drawer unit.



Triple Drawer

VTD3

Overall: 17"W x 20 1/2"D x 30 1/4"H

Fully enclosed, soft close, three drawer unit.



Two Drawer Combo

VTHC1

Overall: 17"W x 20 1/2"D x 30 1/4"H

Fully enclosed, soft close two drawer unit with paper towel holder.



Spice Drawer

VSD1

Overall: 13 7/8"W x 19 3/4"D x 26 1/2"H

Store your spices and large cooking tools in the fully enclosed, soft close drawer unit.



Two Drawer/LP Tank Drawer

VDCLI

Overall: 33"W x 20 1/2"D x 22"H

Two fully enclosed, soft close drawers, and an LP tank drawer.



Two Drawer/Door

VDCISCL/VDCISCR

Overall: 33"W x 20 1/2"D x 22"H

Two fully enclosed soft close drawers and soft close door.

VDCISCL (Swing Left)

VDCISCR (Swing Right)



Three Drawer/Door

VDC2SCL/VDC2SCR

Overall: 32 3/4"W x 20 1/2"D x 22"H

Three fully enclosed soft close drawers and soft close door.

VDC2SCL (Swing Left)

VDC2SCR (Swing Right)



Charcoal/Pellet Drawer

VDCPI

Overall: 14"W x 25 1/2"D x 26 1/2"H

Includes one 8 gallon dry-seal plastic bin, perfect for storing wood pellets or charcoal.

DOORS & DRAWERS

RENAISSANCE COOKING SYSTEMS

LIMITED
LIFETIME
WARRANTY

Our trash drawers pair perfectly with the trash chute and cutting board (VTC1 on page 13.)



Narrow Trash Drawer

VTD4

Overall: 14"W x 19 3/4"D x 26 1/2"H
Includes one 13 gallon plastic bin.



Double Trash Drawer

VTD2

Overall: 20"W x 27 1/4"D x 27"H
Includes two 13 gallon plastic bins.
Trash/recycling.



Trash/LP Bottle Drawer

VTD1

Overall: 20"W x 16"D x 27"H
Includes one 13 gallon plastic bin.



Drop-In Cooler

VIC2

Overall: 24"W x 18"D
Fully insulated, includes strainer & plug.



Accessory/Tool Drawer

VDU1

Overall: 25 1/2"W x 20"D x 6"H
For storing cooking utensils.
Soft Close.



Accessory/Tool Drawer

VDU2

Overall: 30"W x 21 1/4" D x 15"H
Fully enclosed soft close drawer. Perfect for storing oversized tools and utensils.



Kamado Drawer

VLSD1

Overall: 31"W x 27 1/2"D x 19"H
Fully enclosed. Supports up to a 600 lb. Kamado grill.

Shown VDCL1

DOORS & DRAWERS

RENAISSANCE COOKING SYSTEMS

LIMITED
LIFETIME
WARRANTY

Vertical and horizontal doors are ideal for under sinks, grills, and side burners providing extra storage and easy access for appliance maintenance.



Vertical Door

VDVISCL/VDVISCR

Overall: **17"W x 22"H**

Soft close.

VDVISCL (Swing Left)

VDVISCR (Swing Right)



Large Vertical Door

VDV2SCL/VDV2SCR

Overall: **20"W x 27"H**

Soft close.

VDV2SCL (Swing Left)

VDV2SCR (Swing Right)



Horizontal Door

VDHISCL/VDHISCR

Overall: **27"W x 20"H**

Soft close.

VDHISCL (Swing Left)

VDHISCR (Swing Right)



Dry Pantry

VDPI

Overall: **33"W x 21" D x 22"H**

Fully enclosed, adjustable shelf.



Double Door

VDDISC

Overall: **33"W x 22"H**

Soft close.



Large Double Door

VDD2SC

Overall: **45"W x 22"H**

Soft close.



Double Door

VDD3SC

Overall: **33"W x 16"H**

Low Profile. Soft close.



Large Double Door

VDD4

Overall: **45"W x 16"H**

Low Profile.



Warming Drawer

RWD1

Overall: **36"W x 21"D x 11 1/2"H**

Fully enclosed. Temperature ranges 50°F - 230°F. 120V required.



Paper Towel Holder

VTH1

Overall: **17"W x 9"D x 11"H**

Great addition to all kitchens.



Trash Chute & Cutting Board

VTC1

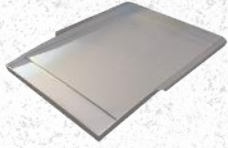
Overall: **10 1/4"W x 15 1/4"D**
Plastic cutting board, stainless chute & removable lid.



Shown VTC1

GRIDDLES

RENAISSANCE COOKING SYSTEMS



Premier Series Griddle

RSSG1A

Overall: **14 1/2"W x 17 7/8"D**

304 stainless steel, grease tray, raised edges.



Cutlass Pro Series Griddle

RSSG2

Overall: **10 1/4"W x 19 1/2"D**

304 stainless steel, dual handles, grease tray, raised edges.

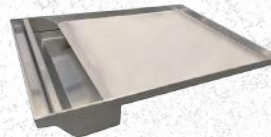


Premier Series Dual Plate Griddle

RSSG3

Overall: **14 1/4"W x 17 3/4"D**

304 stainless steel cooking surface, cast-iron bonded base plate, dual handles, raised edges, removable grease tray.



Cutlass Pro Series Dual Plate Griddle

RSSG4

Overall: **14 1/4"W x 19 3/4"D**

304 stainless steel cooking surface, cast-iron bonded base plate, removable grease tray.



ARG Series Griddle

ASG1

Overall: **12 1/8"W x 17 5/8"D**

304 stainless steel, grease tray, raised edges. Sits directly on cooking grids.



ARG Series Dual Plate Griddle

ASG2

Overall: **11 1/8"W x 19"D**

304 stainless steel, cast-iron bonded base plate, raised edges, removable grease tray.



Shown Cast-Iron Bonded Base



SINKS & REFRIGERATION

RENAISSANCE COOKING SYSTEMS



Stainless Sink

RSNK1

Overall: **15"W x 15"D**

Double faucet, strainer,
23 gauge stainless, overmount.



Stainless Sink

RSNK2

Overall: **23 1/4"W x 18"D**

Single handle pull-down faucet, strainer,
360° swing angle, 18 gauge stainless,
undermount or overmount, hot & cold water.



Stainless Farmhouse Sink

RSNK3A

Overall: **32 1/4"W x 20 3/4"D**

Single handle pull-down faucet, strainer,
grate, 360° swing angle, 18 gauge, 304
stainless steel, hot & cold water.



Cutting Board & Trim Kit

RCBH

Overall: **26 3/4"W x 26 3/4"D**

304 stainless steel trim with a 1" thick
HDPE cutting board..



Trim Kits

See Fridge

304 stainless steel. Gives your
outdoor fridge a polished,
professional finished look.



Door Upgrade Kits

SSFDLB/SSFDLRB

Upgrade your fridge with this stainless steel door
sleeve, featuring a sleek vertical handle.

SSFDLB (Swing Left)
SSFDLRB (Swing Right)

Fits: **REFRIA**



Cutting Board Sink Cover

RCB1/RCB2/RCB3

RCB1 Overall: **12 7/8"W x 10 7/8"D**

RCB2 Overall: **23 1/4"W x 18 1/4"D**

RCB3 Overall: **36"W x 24"D**

Covers: **RSNK1/RSNK2/RSNK3**

Synthetic 3/8" thick black cutting board.

*Our cutting boards maximize
outdoor kitchen space by fitting
over plunge cuts or sinks,
allowing you to fully utilize your
kitchen without sacrificing
counter area.*

Shown RCBH



SINKS & REFRIGERATION | RENAISSANCE COOKING SYSTEMS

RCS refrigeration comes with a 5-year limited warranty, offering protection and confidence in its durability.



20" Refrigerator

REFR1A

Trim Kit: **RTR1A**

Overall: **20"W x 20 3/4"D x 32 1/2"H**

4.5 Cu. Ft., reversible stainless steel locking door, interior light, one drawer, automatic defrost, can holder, adjustable shelves & thermostat. Optional door upgrades: SSFDLB/SSFDLRB



24" Refrigerator

REFR2A/*REFR2B

Trim Kit: **RTR2**

Overall: **24"W x 22 3/4"D x 32"H**

5 Cu. Ft., stainless steel, interior LED light, locking door, adjustable shelves & thermostat. **Certified for Outdoor Use.** *Optional glass front.



15" Ice Maker

REFR3

Trim Kit: **RTR3**

Overall: **15"W x 25"D x 33"H**

Daily Ice Production: **50 lbs.**
Ice Storage Capacity: **26 lbs.**
Stainless steel, reversible door. **Certified for Outdoor Use.** Optional: RPUMP



Nugget Ice Maker

REFR3A

Overall: **15 1/8"W x 21 3/4"D x 34 1/8"H**

Daily Ice Production: **55 lbs.**

Ice Storage Capacity: **26 lbs.**

Reversible stainless steel door, ice shovel included, automatic shut off.

Certified for Outdoor Use.

Optional: RPUMP



24" Two Drawer Refrigerator

REFR4

Trim Kit: **RTR4**

Overall: **24"W x 25"D x 34"H**

5.3 Cu. Ft., two drawer, stainless steel, interior lights & LED controls.

Certified for Outdoor Use.



15" Narrow Refrigerator

REFR5

Trim Kit: **RTR5**

Overall: **15"W x 25"D x 34"H**

3.2 Cu. Ft., 304 stainless steel locking glass door, interior LED light, adjustable shelves & thermostat.



15" Wine Cooler

RWC1

Trim Kit: **RTR5**

Overall: **15"W x 25"D x 34"H**

3.2 Cu. Ft., 304 stainless steel locking glass door, dual interior lights, dual temperature zones, wine/beer storage, adjustable wooden shelves.

ACCESSORIES

RENAISSANCE COOKING SYSTEMS



Access Doors w/ Lock

RADD66/RAD88

Overall: **6"W x 6"H / 8"W x 8" H**
304 stainless steel, recessed with screwdriver twist lock.



Timer Box & Mount

RTB1

Overall: **8 3/4"W x 8 3/4"H**
304 stainless steel, recessed with screwdriver twist lock in door to protect the RGT1 timer.



Timer Mounting Plate

RTB1P

Overall: **5"W x 6 1/2"H**
304 stainless steel, used to mount RGT1 timer to a wall or outdoor kitchen structure.



Gas Timer

RGT1

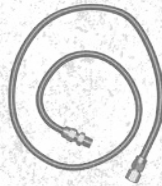
1 hour gas timer, twist to set any amount of time for gas flow, up to 1 hour.



Outdoor Kitchen Vent

RVNT1

To help ensure safety of your outdoor kitchen, vents are required every 4 running feet. These help vent the built up heat and possible gases in your outdoor kitchen cabinet.



Stainless Steel Flex Hose

SSFLEX8436/SSFLEX8448

To connect your gas grill or side burner to your gas supply. 1/2" flare fittings. Available in two lengths, 36" & 48".



Propane Hose & Regulator

RONHK

3/8" flare fitting on one end & POL to screw on the outside threads of a propane tank. Low pressure, preset.



Condensate Pump

RPUMP

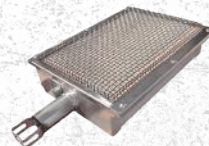
For use with REFR3 and REFR3A when gravity feed drain is not available.



Smoker Tray

RST2632/RST3042

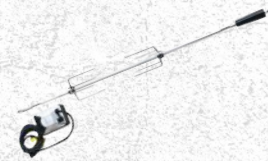
Add some extra flavor to your food by adding your favorite wood chips. This will allow you to get that great wood flavor when cooking with gas.



Infrared Sear Burner

AIR303642/IR2632/IR30

Sear burners replace the left main burner in your grill to turn up the heat and get those perfect sear marks. One per grill.



Rotisserie Kit

**ARG30ROTISS/ARG36ROTISS/ARG42ROTISS
RJC32ROTISS/RJC40ROTISS**

Upgrade your Premier or ARG Grill with a rotisserie kit. Includes rotisserie rod, handle, 2 forks, balance and motor.

ACCESSORIES

RENAISSANCE COOKING SYSTEMS



Vent Hood

RVH36A/RVH48A

RVH36A Overall: **36"W x 30"D x 18"H**

RVH48A Overall: **48"W x 30"D x 18"H**

Double-lined 304 stainless steel, 1,000 CFM per blower, fully adjustable variable speed motors, dimmable halogen lights.

RVH36A: 1 Blower (1,000 CFM)

RVH48A: 2 Blowers (2,000 CFM)



Vent Hood Duct Cover

RVH36DCA/RVH48DCA

RVH36DCA Overall: **36"W x 15"D x 12"H**

RVH48DCA Overall: **48"W x 15"D x 12"H**

Extends the height of your range hood, enclosing the space between the vent hood and the ceiling or soffit for a clean, finished look.



Vent Hood Spacer

RVH48SP8A

RVH36SP4A: **36"W x 4"D x 18"H**

RVH36SP8A: **36"W x 8"D x 18"H**

RVH48SP4A: **48"W x 4"D x 18"H**

RVH48SP8A: **48"W x 8"D x 18"H**

Extends the hood from the wall to give better coverage over the grill when needed.



Covers

Keep your grill or side burner safe from the outdoor elements. Crack resistant, 2-ply vinyl, UV protection, flannel inside.

See grill or side burner for item #



Insulated Liners

The insulated liner is required when installing the grills or side burners into a cabinet constructed with combustible materials. Double-walled stainless steel construction for maximum strength & protection.

See grill or side burner for item #

Warranty – RCS is proud to provide the industries most comprehensive warranty program. All RCS American Renaissance Grills, Cutlass Pro Series Grills and Cutlass Pro Series side burners, sinks, briquette trays, as well as all doors and drawers are warranted to be free from manufacturer defects for the lifetime of the original owner. All RCS Premier Series Grills and Premier Series Side Burners are warranted to be free from manufacturer defects for 15 years to the original owner. All RCS Refrigeration products are warranted to be free from manufacturer defects for 5 years to the original owner. All other products carry a one-year warranty to the original owner. This warranty excludes normal surface corrosion, discoloration, surface scratches and surface rust which may occur. Improper maintenance, salt spray, chemicals, pesticides will affect the look and integrity of the components of these products. RCS will not be responsible for any damage caused as a result of not following owner's manual instructions. This nontransferable warranty is limited to the replacement of original (one-time) defective parts, does not include shipping and labor to remove or install replacement parts, if necessary. The owner must retain and submit their original receipt with any warranty claim to receive warranty parts. The warranty applies to the original owner only. Coverage is for residential use only, no commercial applications apply. No registration required.

Model NG & LP	Cut Out (Inches)		
	Width	Depth	Height
ARG30	28 5/8	23 1/4	10 1/4
ARG36	34 5/8	23 1/4	10 1/4
ARG42	40 5/8	23 1/4	10 1/4
ASB3	20 7/8	22 1/2	10 1/4
ASBSSB	13 1/5	23 1/4	10 1/4
LJARG30	30 3/4	24 3/8	11 3/8
LJARG36	36 5/8	24 3/8	11 3/8
LJARG42	42 3/4	24 3/8	11 3/8
LJASBSSB	15 1/2	24	11 1/4
LJASB3	24	24 1/8	11 1/4
LJRDB1	14 3/8	20 1/4	9 1/4
LJRJC26	26	22	9 5/8
LJRJC32	33	22	9 5/8
LJRJC40	40 1/2	22	9 1/4
LJRJCSSB	12 7/8	22 1/8	9 5/8
LJRON30	35 1/2	21 1/4	11 3/4
LJRON38	43 5/8	21 1/4	12 1/4
LJRON42	47 1/2	21 1/4	11 3/4
LJRSB3A	16	20 1/8	10 5/8
LJRJCSB3A	16	20	9
RAD66	6 1/2	-	6 3/8
RAD88	8 5/8	-	8 3/8
RCBH	27 1/8"	27 1/8"	-
RDB1 RDB1EL	12	19	8
REFR1A	20 1/4	22	33
REFR2A REFR2B	23 5/8	23	32 1/2

Model NG & LP	Cut Out (Inches)		
	Width	Depth	Height
REFR3	15	24	33 1/2
REFR3A	15 1/4	22 1/2	34 1/4
REFR4	24	23 3/4	34 1/4
REFR5	15 1/4	24	34 1/4
RJC26A	23 1/2	21 1/4	8 1/4
RJC32A RJC32AL	30 5/8	21	8 1/4
RJC40A RJC40AL	37 3/4	21	8 1/4
RJCC32A	30 5/8	20 1/2	8 1/4
RJCSB3A RJCSB3AL	14	19	8
RJCSSB RJCSSBL	10 3/4	21	8
RON30B	33	20	11
RON38B	41 1/4	20	11
RON42B	45	20	11
RSB1	7 3/4	15 1/2	-
RSB3A	14	18 5/8	9 1/4
RSNK1	14 3/8	14 3/8	-
RSNK2	21	15 3/4	-
RSNK3A	30 3/4	17 3/8	8
RTB1	6 1/2	-	6 1/2
RTR1A	20 1/2	-	33
RTR2	24 1/2	-	33 1/4
RTR3	16	-	34
RTR4	25	-	34 1/2
RTR5	15 3/4	-	34 3/4
RVNT1	12 1/2	-	3 1/2
RWC1	15 1/4	24	34 1/4

Model NG & LP	Cut Out (Inches)		
	Width	Depth	Height
RWD1	34 1/2	21	10 1/8
VDC1SCL VDC1SCR	30 1/2	22	19 1/2
VDC2SCL VDC2SCR	30 1/2	-	19 1/2
VDCL1	30 1/2	20 3/4	19 1/2
VDCP1	11 1/2	25 1/4	24
VDD1SC	30 1/2	-	19 1/2
VDD2SC	42 1/2	-	19 1/2
VDD3SC	30 1/2	-	13 1/4
VDD4	42 1/4	-	13 1/4
VDH1SCL VDH1SCR	24 1/2	-	17 1/2
VDP1	30 1/2	21	19 1/2
VDR1	15	22	19 1/2
VDU1	24	21	4
VDU2	27 7/8	21	12 1/2
VDV1SCL VDV1SCR	14 1/2	-	19 1/2
VDV2SCL VDV2SCR	17 1/2	-	24 1/2
VIC2	23 1/4	17 1/4	13
VLS1D1	30 1/4	27 1/2	19
VSD1	11 1/2	19 1/2	24
VTC1	6 1/2	8	4
VTD1	17 7/8	17 1/2	25
VTD2	17 5/8	27 1/2	24 5/8
VTD3	15 1/2	22	27 3/4
VTD4	11 3/4	19 1/2	24
VTH1	14 1/2	8 1/2	8 1/2
VTHC1	15 1/2	22	27 3/4



All dimensions are provided for reference purposes only and are subject to change without prior notice. For the latest measurements and specifications, please visit RCSGasGrills.com. For more information on cooking, using, or servicing your new RCS grill, feel free to check our website at RCSGasGrills.com or contact us at Info@RCSGasGrills.com.