

# LEAH BAILEY INTERIORS

---

DESIGN. LIFESTYLE.



[www.leahbaileyinteriors.com](http://www.leahbaileyinteriors.com)

## MEET THE TEAM

---



*Founder & Principal Designer*  
Leah Bailey



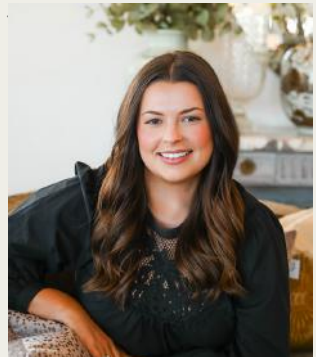
*Director of Operations*  
Molly Thomas



*Financial Controller*  
Janet Foy



*Junior Designer*  
Caroline Magnani



*Junior Designer*  
Ellie Bennett



*Junior Designer*  
Morgan Dewberry



*Project Manager*  
Kristin Peters



*Design Assistant*  
Abby Tolkacz

# RESIDENTIAL PORTFOLIO



































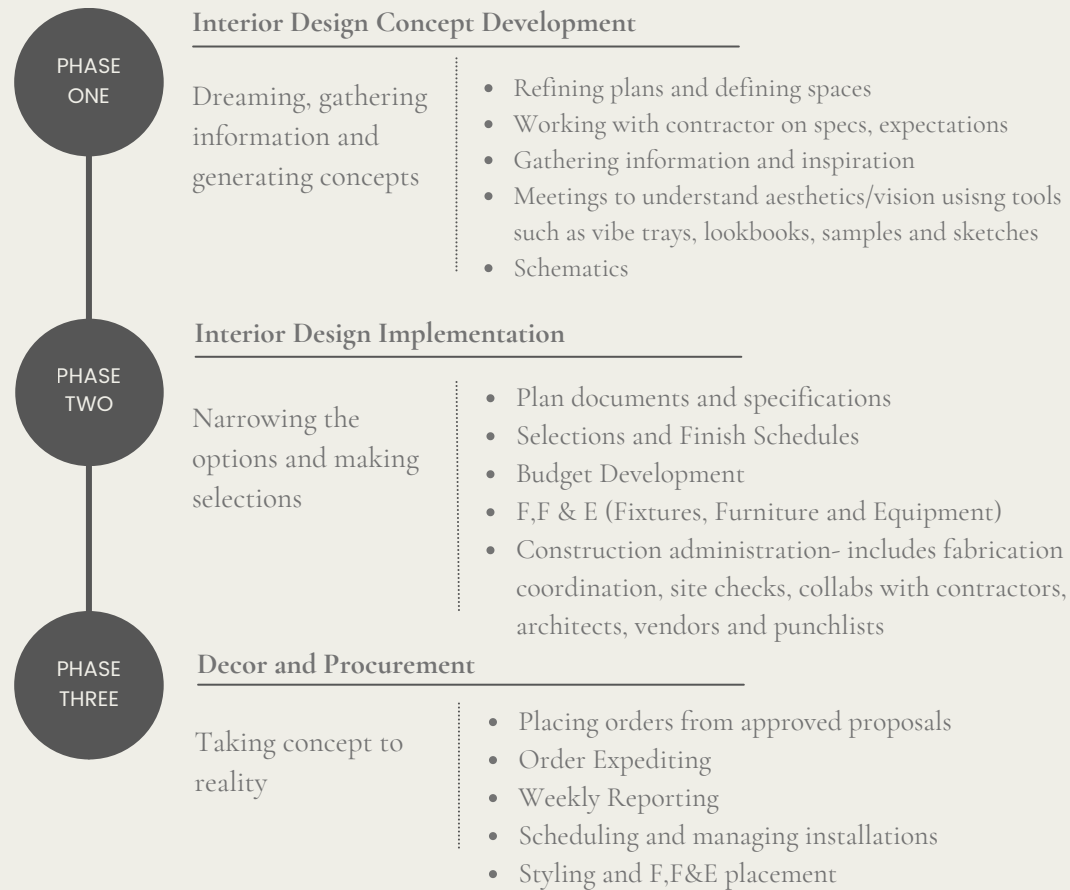






# PROJECT STAGES

Each project can be unique and comes with it's own timeline. But here are the typical phases throughout the design process.



# COMMUNICATION

---



**Phone:**  
912-239-4123



**Email:**  
[inquiries@leahbaileyinteriors.com](mailto:inquiries@leahbaileyinteriors.com)



**Instagram DMs:**  
[@leahbaileyinteriors](https://www.instagram.com/leahbaileyinteriors)

## **Office Hours:**

Our office hours are 9am to 5pm Monday thru Friday. But feel free to email anytime!

## **Communication + Meetings:**

A bit about your communication rhythm and expectations around communication.

Expect from our team:

- Regular phone or text check-ins
- Weekly update and project progress emails
- In person meetings at start and end of key phases of project
- Site visits - as needed or requested by you or trades
- Proposals with any chosen furnishings for approval before ordering
- Invoices from accounting with any balances due



