

Dickinson

JANUARY 7-18, 2025

with optional
Rwanda Pre-Tour and
Zanzibar Post-Tour

TANZANIA WILDLIFE SAFARI



Orbridge



Dickinson

Dear Dickinson Alumni, Parents and Friends,

My passion for photography began more than 40 years ago, when I watched my first black-and-white print slowly emerge in a tray of developer under the romantic red light of the darkroom. That day I knew I wanted to be a photographer, but I would have never guessed that in the years to come, photography would take me around the world, nor that I would become just as passionate about teaching.

I began teaching in 2001, and in 2007 I joined the faculty of Dickinson's Department of Art & Art History. I love being in the classroom with Dickinson students and teaching them how to be better observers, artists and communicators. The most rewarding experience I have as a teacher is when a student tells me at the end of a semester: "I'll never again see the world the same way." These will more than likely be the same words you'll use if you choose to join me on this transformative wildlife safari through the heart of East Africa.

In 2016 I was asked to run a Dickinson global-ed program to Tanzania, and while I had always dreamed of going to Africa, I was not prepared for the life-changing experience it would be. Tanzania is the backdrop to the year-round migration of grazing herbivores that traverse the Serengeti plains, Tarangire National Park and Ngorongoro Crater—three places I have longed to return to since 2016. Within Tanzania's game parks, you'll witness spectacular wildlife, colorful local traditions and endless sun-drenched savannas.

During this epic 12-day journey, you'll trek with expert naturalist guides in 4x4 Land Cruisers through breathtaking terrain and learn how to hone your photography skills through group lectures and hands-on learning. Be sure to have your cameras ready, as you'll likely encounter the "big five" animals (lions, leopards, elephants, rhinos and buffaloes) plus cheetahs, wildebeests, primates, gazelles, countless species of birds and zebras as far as the eye can see!

As each day's adventures draw to a close, you'll retreat to the lap of luxury in premium lodges and tented camps. Each offers exceptional hospitality and superior amenities, ensuring your comfort after your exhilarating day out on the savanna.

As important and as powerful as photography is, no photos can accurately describe your experience during this once-in-a-lifetime opportunity. Every dusty turn in the national parks is a memory that will last a lifetime. Pictures or no pictures, this experience will change your life!

Space is limited to just 24 guests, so reserve your spot now. To reserve, visit <https://dickinson.orbridge.com>, call (866) 639-0079 or return the attached reservation form.

Warmly,

Andrew S. Bale

Lecturer of Art & Art History



Tanzania Wildlife Safari | Itinerary and Highlights (subject to change)

Locations selected for this safari promise excellent viewing of wildlife, however, spotting specific wildlife cannot be guaranteed. Some activities are dependent on weather and seasonal conditions.

Day 1: EN ROUTE FROM U.S.

Day 2: ARRIVE IN ARUSHA, TANZANIA An Orbridge representative will be waiting to assist with your transfer to the hotel. Overnight: Arusha Serena Hotel, Resort & Spa

Days 3-4: TARANGIRE NATIONAL PARK Morning and afternoon game drives provide your introduction to Africa's natural beauty and wonder. Between game drives gather for a bush lunch inside the park. Lodging is inside the park, where you again may encounter elephants strolling the grounds. Overnight: Tarangire Sopa Lodge (B,L,D daily)

Day 5: NGORONGORO CONSERVATION AREA Enjoy a morning game drive before a farm walk and lunch at Gibb's Farm. Take advantage of hands-on experiences, including harvesting vegetables, milking cows, feeding pigs, and collecting eggs. Overnight: Ngorongoro Serena Safari Lodge (B,L,D)

Day 6: NGORONGORO CRATER Explore this UNESCO World Heritage Site and one of the seven natural wonders of Africa. During a riveting full-day game drive, spot for the Big Five and other species like wildebeest and flamingos. Overnight: Ngorongoro Serena Safari Lodge (B,L,D)

Days 7-8: OLDUVAI GORGE | SERENGETI NATIONAL PARK – SERONERA VALLEY Glimpse into the origins of humanity at Olduvai Gorge, one of the most important prehistoric archaeological sites on Earth. Daily morning and afternoon game drives through awe-inspiring landscapes of the Serengeti offer exhilarating opportunities to witness a plethora of grazing animals. Overnight: Serengeti Serena Safari Lodge (B,L,D daily)

Days 9-10: WESTERN SERENGETI | GRUMETI The Serengeti's relatively narrow western corridor consists of open savannas, woodlands, and floodplains. Daily morning and afternoon game drives afford additional opportunities to learn about these reserves and their diversity of bird and mammal species. Overnight: Mbalageti Serengeti Tented Chalets (B,L,D daily)

Day 11: SERENGETI | FLIGHT TO ARUSHA | DEPART FOR U.S. Day rooms are available at the hotel in Arusha before evening flights home. Day Room: Arusha Serena Hotel, Resort & Spa (B,L)

Day 12: EN ROUTE | ARRIVE IN U.S. (B = Breakfast, L = Lunch, D = Dinner)



Serengeti Sunrise Safari

While in Serengeti National Park (days 7-8), take a once-in-a-lifetime sunrise safari by hot air balloon. During this optional excursion, ascend above the southern Serengeti at dawn for an exclusive, birds-eye view of wildlife roaming the expansive landscape.

Afterward enjoy a champagne breakfast plus a game drive before rejoining the group.

This excursion must be purchased from Orbridge Guest Services in advance to guarantee availability. Purchase is non-refundable inside 90 days from departure.



What's Included

- 9 nights deluxe accommodations, each carefully selected to maximize wildlife viewing and comfort
- Access to a day room on departure day
- 9 breakfasts, 9 lunches, and 8 dinners, including a special farewell Serengeti bush dinner
- Expert naturalist guides throughout, including an Orbridge Expedition Leader
- Daily game drives in custom 4x4 Land Cruisers with roof hatch access and guaranteed window seating
- Coffee and tea with meals and filtered water on game drives
- Internal flight from the Serengeti to Arusha
- All main program gratuities
- All taxes, service charges, and park fees
- Temporary membership in Flying Doctors Service
- Airport transfers for guests arriving and departing on suggested flights



Activity Level: This safari tour requires an ability to walk safely over uneven and slippery ground without assistance, transport luggage a short distance, get in and out of a 4x4 Land Cruiser, and physically tolerate vehicle motion on oftentimes bumpy Serengeti roads.



Accommodations *(subject to change)*

ARUSHA SERENA HOTEL, RESORT & SPA

A comfortable retreat on the shores of beautiful Lake Duluti, this country house-styled hotel is built on what used to be a coffee plantation.



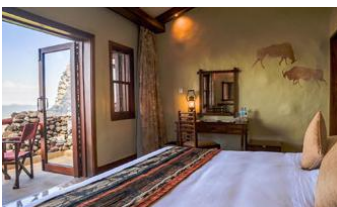
TARANGIRE SOPA LODGE

Enjoy outstanding accommodations amidst a gorgeous landscape. Amenities include an outdoor pool, centrally located common room, bar and lounge, and outdoor terrace.



NGORONGORO SERENA SAFARI LODGE

Built from local river stone and designed to completely blend in with the landscape, this luxury hotel sits on the rim of the Ngorongoro Crater.



SERENGETI SERENA SAFARI LODGE

You'll stay in a thatched circular rondavel nestled among acacia trees in the manner of a traditional African village.



MBALAGETI SERENGETI TENTED CHALETs

This property offers a breathtaking 360-degree panoramic view of the Serengeti Plain, comfortable and well-appointed rooms, and a refreshing pool.



Optional Pre-Tour Rwanda

Search for the gorillas that traverse the Virunga Mountains for the heart-pounding thrill of observing these giants in their natural habitat.



Day +1: EN ROUTE FROM U.S.

Day +2: ARRIVE IN KIGALI, RWANDA Meet your host and transfer to the hotel for a restful evening.
Overnight: Kigali Serena Hotel

Day +3: KIGALI | KINIGI Morning sightseeing today includes a tour of the Genocide Museum. Enjoy lunch in Kigali before the drive to the Mountain Gorilla View Lodge where you can rest and prepare for tomorrow morning's trek.
Overnight: Mountain Gorilla View Lodge (B,L,D)

Day +4: KINIGI | VOLCANOES NATIONAL PARK | MORNING GORILLA TREK | KIGALI After an early breakfast, set out for mountain gorilla trekking in Volcanoes National Park. Encountering these amazing animals up close is a life-changing experience. National park guides will lead you through the thick forest in search of one of the habituated gorilla families that traverse the Virunga Mountains. Upon finding the group, we will have one hour to observe and capture remarkable photographs.
Overnight: Kigali Serena Hotel (B,L,D)

Day +5: KIGALI | FLIGHT TO ARUSHA | MAIN PROGRAM BEGINS After breakfast take the group flight to Arusha to join fellow travelers for the main program. (B)

Activity Level: Guests should be in very good physical condition with the ability to walk up and down hills in tropical forests on uneven, sometimes rocky, steep and/or slippery, terrain. The forest can be humid and paths may have heavy vegetation.

What's Included

- 2 nights accommodations at Kigali Serena Hotel (or similar)
- 1 night accommodations Mountain Gorilla View Lodge (or similar)
- 3 breakfasts, 2 lunches, and 2 dinners
- Excursion transportation, all park fees, and one gorilla trek permit
- Temporary membership in the Flying Doctors Service
- Airport transfer for guests arriving on the suggested flight
- Internal airfare from Kigali to Arusha for the main program



Optional Post-Tour Zanzibar

Known as Spice Island and overflowing with influences from Africa, Arabia, India, and Europe, Zanzibar is a fascinating destination with a dramatic history, endless coastlines, and a magical atmosphere.

Day 11: **FLIGHT FROM ARUSHA TO ZANZIBAR** After the main program flight from the Serengeti Grumeti airstrip to Arusha, board the quick flight to Zanzibar—the Spice Island.
Overnight: Zanzibar Serena Hotel (L,D)

Day 12: **ZANZIBAR | JOZANI CHWAKA BAY NATIONAL PARK** After breakfast set out on a walking tour of Zanzibar's old town, Stone Town—a UNESCO World Heritage Site—and its market. Visit the House of Wonders, which displays exhibitions dedicated to Swahili culture, as well as the Palace Museum, highlighting its ties to Zanzibar's Omani history. At the Zanzibar Old Fort, discover the fortification's colorful history, from its development in 1698 to how the structure is still being occupied today. After lunch travel across the island through quaint villages and lush vegetation to enchanting Jozani Chwaka Bay National Park—the only national park in Zanzibar and home to the unique red colobus monkey. Enjoy time to explore the forest before returning to the hotel for dinner.
Overnight: Zanzibar Serena Hotel (B,D)

Day 13: **ZANZIBAR | OPTIONAL SPICE PLANTATION TOUR / DEPART FOR U.S.** The morning is at leisure. Depending on departing flight times, you may choose to join the optional spice tour excursion. (*Purchase in advance from our Orbridge Guest Services. Reserve early for best availability as space is limited.*) Relax in the day room at the hotel until taking the complimentary transfer to Abeid Amani Karume International Airport for flights home.
Day Room: Zanzibar Serena Hotel (B,L)

Day 14: **EN ROUTE | ARRIVE IN U.S.**

What's Included

- Internal airfare from Arusha to Zanzibar
- 2 nights accommodations at Zanzibar Serena Hotel (or similar) plus a day room during departure day
- 2 breakfasts, 2 lunches, and 2 dinners
- Guided panoramic city tour
- Admission to the House of Wonders, the Palace Museum, and Jozani Chwaka Bay National Park
- All excursion transportation
- Airport transfer for guests departing at the suggested times



TANZANIA WILDLIFE SAFARI

JANUARY 7-18, 2025

Rwanda Pre-Tour: January 1-8, 2025

Zanzibar Post-Tour: January 17-20, 2025

Reserve by Credit Card:

Online: dickinson.orbridge.com

Phone: (866) 639-0079

Fax: (206) 452-5655

Reserve by Check:

Made payable to **Orbridge, LLC**

Mail to: Orbridge, P.O. Box 1376

Poulsbo, WA 98370

GUEST INFORMATION:

Guest #1 Name (Title/Salutation): _____

Email: _____ Class Year: _____

Home Phone: _____ Alt. Phone: _____

Address: _____

City: _____ State: _____ Zip: _____

Guest #2 Name (Title/Salutation): _____

Email: _____ Class Year: _____

Home Phone: _____ Alt. Phone: _____

DEPOSIT PAYMENT:

Check ACH (Automated Clearing House) MasterCard/Visa American Express Discover

Card #: _____ Exp. Date: _____ CVV: _____

Name (as printed on card): _____

Billing Address (if different from above): _____

City: _____ State: _____ Zip: _____

DEPOSIT:

PRE-TOUR GORILLA TREK PERMIT FEE: A gorilla trek permit fee deposit of \$750 per person is required to guarantee availability. This non-refundable and non-transferable permit is purchased at the time of reservation.

_____ guests joining pre-tour (\$750/person)
(non-refundable gorilla permit fee) \$ _____

_____ guests joining program (\$850/person) \$ _____

_____ guests joining post-tour (\$500/person) \$ _____

TANZANIA OPTIONAL EXCURSIONS (added to your final invoice)—**book early; limited space available:**

_____ guests joining Balloon Safari (\$599/person)


ZANZIBAR OPTIONAL SPICE PLANTATION TOUR (added to your final invoice)—**flight time permitting:**

_____ guests joining Spice Plantation Tour (\$79/person)

TOTAL DEPOSIT: \$ _____

I/we have read, understand, and agree to the full Terms & Conditions at terms.orbridge.com; and I/we agree that Orbridge, LLC is authorized to charge my credit card above and/or take my/our deposit for this program.

Signature: _____ Date: _____

 Orbridge takes seriously the responsibility to minimize our global environmental impact. Each year we plant 100,000 trees in U.S. State Forests with afforestation needs as an ongoing initiative among our evolving sustainability efforts. Learn more at orbridge.com/going-green.

Category	Standard Rate	Special Rate*
Double	\$8,499	\$7,995
Single	\$10,999	\$10,495
Rwanda Pre-Tour (includes Rwanda gorilla trek permit)		
Category	Standard Rate	Special Rate*
Double	\$4,599	\$4,395
Single	\$5,799	\$5,595
Zanzibar Post-Tour		
Category	Standard Rate	Special Rate*
Double	\$2,399	\$2,195
Single	\$3,099	\$2,895

Rates are per person based on double occupancy except where noted as Single, in U.S. dollars.

CUT HERE

*Special group rate; limited offer. Single availability limited. Airfare from Rwanda to Tanzania is included in the pre-tour rate. Airfare from the Serengeti to Arusha is included in the main program rate. Airfare from Arusha to Zanzibar is included in the post-tour rate. Airfare otherwise not included. **Place your deposit on or before the specified date, and one Expedition Library per room will be sent after receipt of final payment.

JANUARY 7-18, 2025

Special Alumni Rate:

Save more than **\$1,000** per couple

30-DAY REFUND GUARANTEE

Featuring Faculty Leader: Andrew Bale

Lecturer of Art, Dickinson College

Professor Bale's passion for photography has taken him to four continents, where he's worked with marginalized and indigenous communities and photographed the natural landscape.

His work has been collected and exhibited nationally and internationally, including at The Field Museum, the Smithsonian National Museum of the American Indian, the Espace Ecareuil (France) and The FX Gallery (Slovakia).

In 2023 Bale was selected as one of nine artists to participate in Studio Verde's Nashulai Maasai conservancy artist-in-residence program, where he worked closely with local Maasai community members to help preserve ancestral knowledge. Bale's current collaborative project, "Arrivals: What's Left Behind, What Lies Ahead," continues to draw international attention through exhibitions and film festivals across the U.S. and abroad.

Bale earned his B.F.A. from the Savannah College of Art and Design and his M.F.A. from the University of Delaware.



PRRST STD
U.S. POSTAGE
PAID
PERMIT NO. 825
SAN DIEGO, CA

Reserve by
June 28, 2024**

FREE EXPEDITION LIBRARY
AN EXCLUSIVE EARLY
RESERVATION BONUS