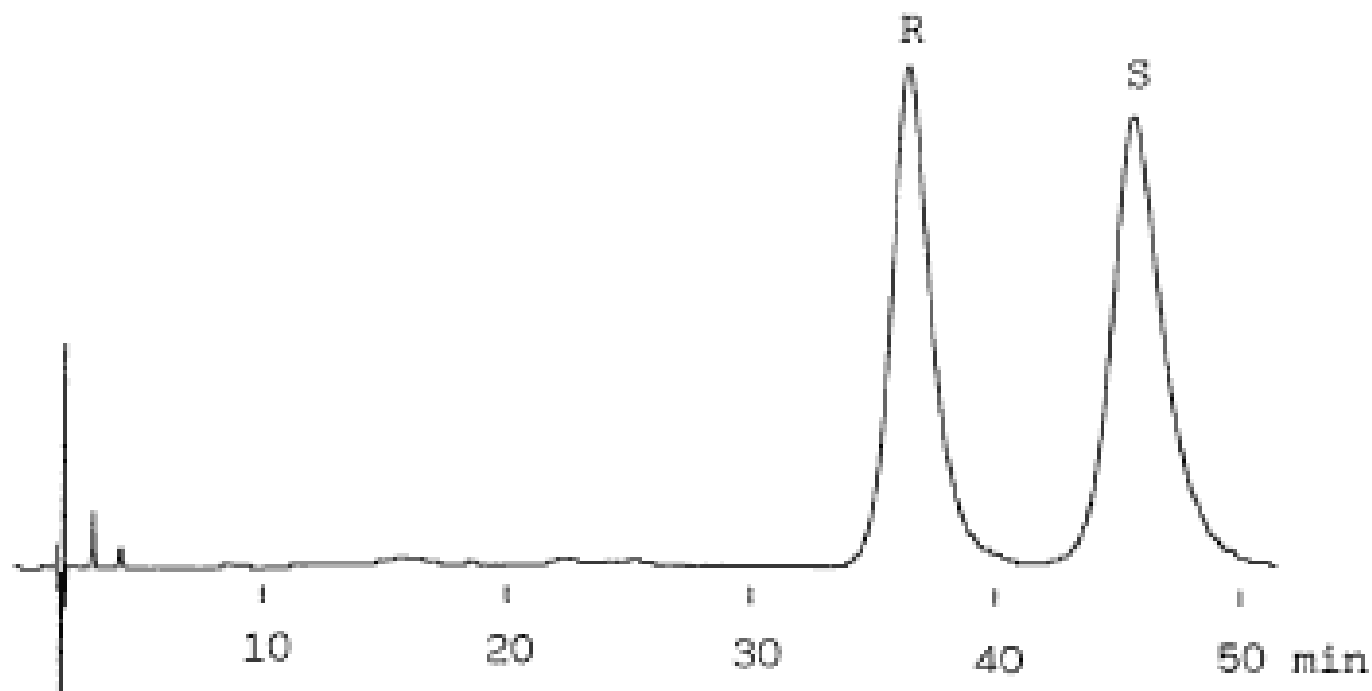


InertSearch™ for LC

Inertsil® Applications

Binaphtol

Data No. LA367-0000



Column : Bioptic AV-1

5 μ m

150 \times 4.6 mm I.D.

Column Cat. No. : 5020-02511

Eluent : CH₃CN/0.1M K₂HPO₄ +0.1M KH₂PO₄

(pH 4.5 by H₃PO₄)=10/90

Flow rate : 1.0 mL/min.

Col. Temp. : 25°C

Detection : UV 280nm

Injection Vol. : 2 μ L

Sample : Binaphtol 0.8mg/1mL CH₃CN

Solutes : Binaphtol