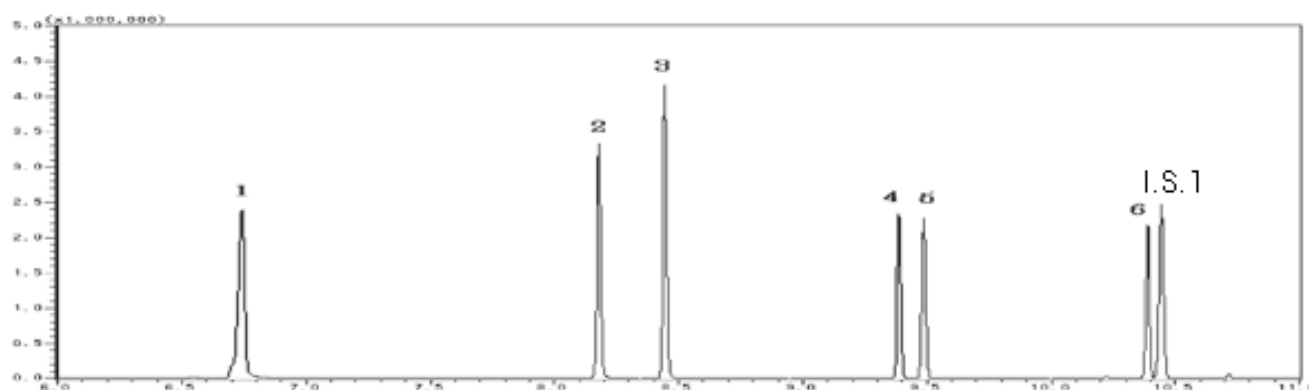


InertSearch™ for GC

InertCap® Applications

Phenols

Data No. GA046-0000



System : GC/MS
Column : InertCap 5MS/Sil
0.25mm I.D. × 30m df=0.25µm
Column Temp. : 50°C (3min) → 20°C/min → 200°C → 10°C/min → 280°C (7min)
Injection : Splitless 1µL
250°C
Detection : MS SIM
250°C
Sample : Phenols

Solutes : 1. Phenol
2. 2-Chlorophenol
3. 4-Chlorophenol
4. 2,6-Dichlorophenol
5. 2,4-Dichlorophenol
6. 2,4,6-Trichlorophenol
(TMS Deriv. by BSTFA)
I.S.1 : Acenaphthene-d10