

2024-25 SEASON

O V A T I O N

*Kimberly-Clark
BROADWAY  ACROSS AMERICA
FOX CITIES

 FOX CITIES
PERFORMING
ARTS CENTER
Where the Arts Come Alive!

BENNY ANDERSSON & BJÖRN ULVÆUS'

MAMMA MIA!



©LITTLESTAR

THE SMASH HIT MUSICAL
BASED ON THE SONGS OF ABBA®

care without
COMPROMISE



**HAND to
SHOULDER
CENTER**

o f w i s c o n s i n ®

Appleton | Chilton
Green Bay | Waupaca

Boyd C. Lumsden, MD
Scott P. Olvey, MD
Joseph P. Cullen, MD
Nathan L. Van Zeeland, MD
Blake W. Hildahl, MD, ATC
Shawn P. Hennigan, MD
Nicholas F. Munaretto, MD
Ryan J. Lubbe, MD

HANDTOSHoulderWISCONSIN.COM
(920) 730-8833



Driven to Deliver

a difference in our community

— bergstromauto.com —



Appleton | Green Bay | Kaukauna | Madison | Manitowoc | Middleton | Neenah | Oshkosh

Méraki

**doing something with
soul, creativity and love**

Just as performers put their hearts and souls into their work, we are committed to doing the same. We call it **Méraki** – putting our soul, creativity and love into our work serving our members and the community.



COMMUNITY FIRST
CREDIT UNION

We'll Find A Way!

**Community First is proud to support
the performing arts in our community.**

(920) 830-7200 • communityfirstcu.com

TABLE OF CONTENTS

Welcome6

Respecting All Audience Members.....8

Business Partners10

Bridging Art and Community12

Program Notes20a

Program Notes (continued)24a

Annual Partners33-36, 38, 40

The Impact of Donating
Theater Tickets39



400 West College Avenue, Appleton, WI 54911
(920) 730-3782 Administration Office

Ovation is published for the Fox Cities Performing Arts Center by FOX CITIES Magazine.

For information on advertising opportunities in this program, contact your account executive or Ruth Ann Heeter at (920) 733-7788 or email raheeter@foxcitiesmagazine.com.

Celebrating
the place we call
home

SUBSCRIBE TODAY!

Fox Cities
MAGAZINE

920-733-7788
foxcitiesmagazine.com



Welcome to the Fox Cities Performing Arts Center

As we embark on a new season of creativity and inspiration, the Center's Board of Directors wants to take a moment to express heartfelt gratitude for your unwavering support of the live performing arts in our community.

The arts have the power to be truly transformative. Whether through captivating performances that ignite imaginations, educational programs that nurture young minds, or community events that bring us all together, our mission is to be a multicultural gathering place for our community to engage in educational opportunities and enhance understanding and enjoyment of life through the creation and presentation of the arts.

Your support as attendees, donors, volunteers and advocates is how the Center's mission comes to life in our communities.

We look forward to sharing a season filled with exceptional live experiences and engaging activities that entertain, inspire and provoke thought.

Explore and celebrate shared connections during your experiences at the Center this upcoming season!

2024-25 Board of Directors

Photo: Shane Van Boxtel, Image Studios

(L-R): Greg Hartjes, Dr. Pam Her, Sharon Brosnan, Lalu Beré, Tim Bergstrom, Lisa Cruz, Jake Woodford, Tom Rettler, Maria Van Laanen, Heather Beresford
Amy Krahenbuhl, Mark Willson, Cordero Barkley, Kate Burgess, Kim Ritzow, Elizabeth Smith, Dan Voss

Not pictured: Laurie Carter, Ignacio Cortina, Gabrielle Dow, Ryan Downs, Tim Galloway, Sarah Haffer, Dave Kievet, Wendy Rosploch, Derrick Sytsma, Steve Zich

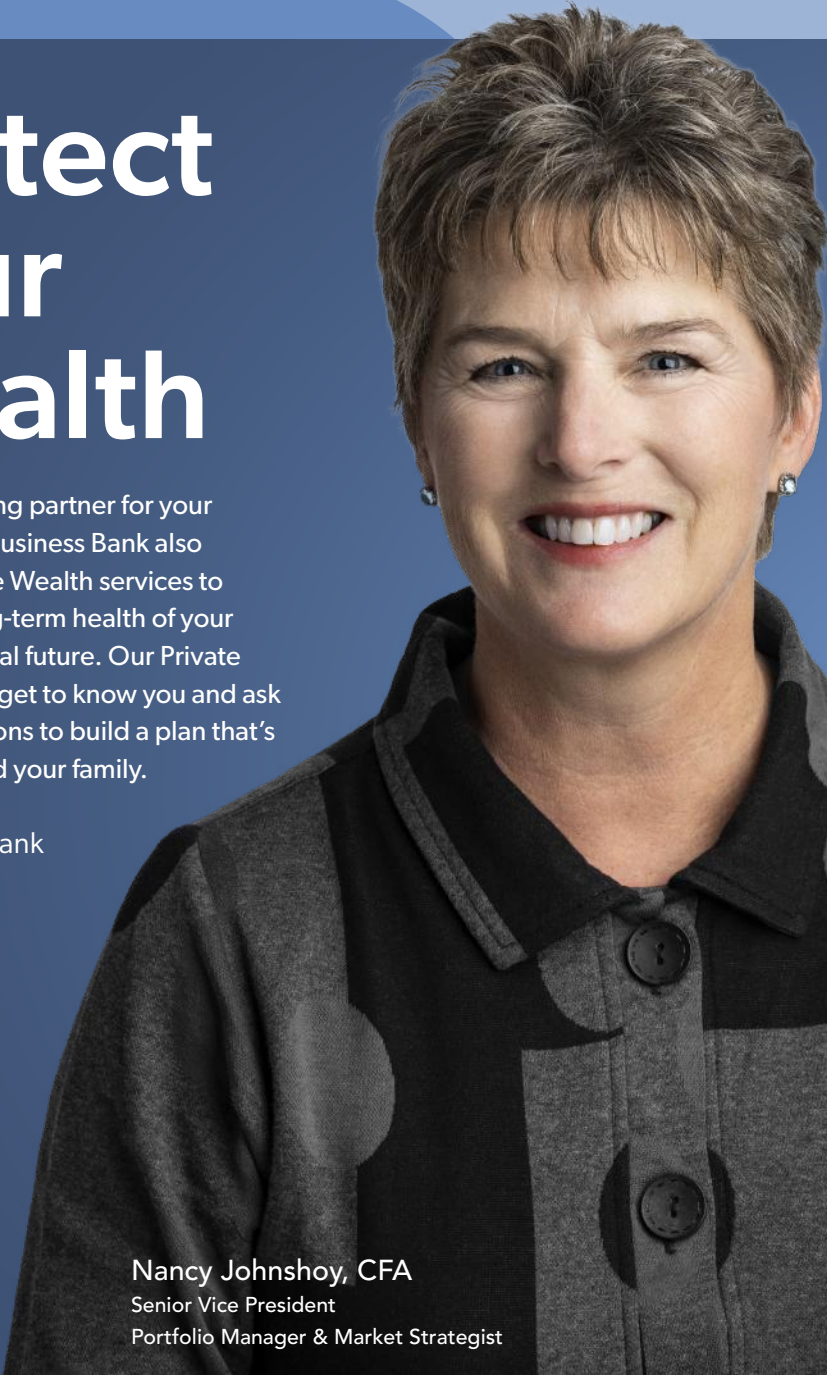


Protect Your Wealth

A trusted banking partner for your business, First Business Bank also provides Private Wealth services to protect the long-term health of your personal financial future. Our Private Wealth experts get to know you and ask the right questions to build a plan that's right for you and your family.

firstbusiness.bank

Member FDIC

A portrait of Nancy Johnshoy, CFA, a woman with short, styled grey hair, smiling warmly. She is wearing a dark grey button-down cardigan over a black top. The background is a solid blue color.

Nancy Johnshoy, CFA
Senior Vice President
Portfolio Manager & Market Strategist

RESPECTING ALL AUDIENCE MEMBERS

At the Fox Cities Performing Arts Center, we are dedicated to creating a welcoming and enjoyable experience for every audience member. As you settle in for a performance, we kindly ask for your understanding and respect for all our patrons, including those with sensory needs or who require accessibility support. Some individuals may have sensory needs that cause them to move around or make noises during the show. We appreciate your patience and empathy as you may hear or see some gentle movements or sounds from those around you.

Theater Etiquette Tips:

Arrive Early:

To avoid disruptions, please arrive on time and be mindful of others as you find your seat.

Minimize Distractions:

Ensure your phone is turned off or set to silent mode and keep conversations to a whisper or avoid them entirely. If you need your device for specific accessibility support (such as Gala Pro), please let your nearby usher know so they are aware.

Photography and Videography are prohibited:

The Center's standard photo and video policy prohibits the use of camera or recording devices in the theater. It's more fun when we're in the moment together! Please note that these policies may vary at the request of the artist.

Be Discreet:

If you need to leave your seat during the performance, please do so quietly and considerately to avoid distracting others.

Applaud Thoughtfully:

Show your appreciation with applause at appropriate moments, avoiding interruptions during quiet scenes or transitions.





Shining this bright is an art.

The Fox Cities Performing Arts Center brings immeasurable value and vibrancy to the place we call home. We are committed to building upon our 111-year heritage of support for the performing arts as we proudly continue to protect, celebrate and elevate the love of jewelry.



Jewelers Mutual[®]

EST 1913

JEWELERSMUTUAL.COM

THANK YOU TO OUR 2024-25 SEASON BUSINESS PARTNERS

As of September 1, 2024

LEADER LEVEL



The power behind possible™

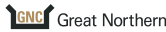
PLATINUM LEVEL



DIAMOND LEVEL



GOLD LEVEL



SILVER LEVEL



GRANTS



Community Vision Fund
Marise Evadne Gustafson Fund

Schmidt Family Foundation



With funds from the State of Wisconsin and the National Endowment for the Arts

MEDIA PARTNERS



CATERING AND RESTAURANT PARTNERS



Family Values. Community Commitment.

For over 50 years, we've proudly been committed to helping our Wisconsin communities thrive. From our family to yours, thank you for the opportunity to support the arts in our Fox Cities community.



Visit us at our new office in January
4120 N Galaxy Drive, Appleton

JohnsonFinancialGroup.com

Products and services offered by these Johnson Financial Group companies:
Johnson Bank and Johnson Wealth Inc.

Celebrating 95 years!



YOUR CAREER BEGINS NOW!

To see what careers Miller has available visit MillerWelds.com/careers



BRIDGING ART AND COMMUNITY

When we connect with others in our community, we build meaningful relationships and create a lively environment where everyone can experience life together.

At the Fox Cities Performing Arts Center, we're excited to embrace this idea in our 2024-25 Season. We truly believe that live performing arts have a unique power to bring people together, bridging different backgrounds and perspectives.

We want performances to spark your imagination and inspire conversations. To make that happen, we'll be offering engaging activities like community discussions, workshops, and post-show Q&A sessions. These opportunities will help deepen your connection with the performances and create a shared sense of discovery.

Our goal is to make live performing arts not just entertaining, but also a meaningful experience that brings diverse voices and perspectives together. We're looking forward to sparking conversations that help us all appreciate different cultures and build stronger connections within our community.

Enjoy the season, and let's explore and celebrate the arts together!



Community Discussion



Community Dance Workshop



Make Music Day

FV SO

Fox Valley
Symphony
Orchestra

2024 - 25 SEASON



SEPT 21 | 24

SEASON OPENER

JEANYI KIM



NOV 16 | 24

FALL CONCERT

SUSAN
SULLIVAN



FEB 8 | 25

WINTER CONCERT

EDUARD
TEREGULOV



MAR 8 | 25

SPRING CONCERT

Grammy and
Emmy-winning

TIME FOR
THREE

CO-PRESENTED WITH



Where the Arts Come Alive!

**WE LOOK FORWARD TO
HAVING YOU JOIN US!**

FOX CITIES P.A.C.
TICKET OFFICE
920.730.3760



MAY 10 | 25

SEASON FINALE

A SYMPHONY
CHORUS

ROOFING • SIDING • WINDOWS • DOORS • GUTTERS



A roofing company you can trust!

920-460-6672 • advantageexteriorsllc.com



TWO VENUES AT ONE GREAT LOCATION!

920-788-5553

400 RANDOLPH DRIVE
APPLETON, WI 54913

OPEN DAILY
10 - 6



CHECK FACEBOOK FOR
UPCOMING SALES AND EVENTS

WWW.MEMORIESLITTLECHUTE.COM

KATHERINE'S

Auction & Appraisal Service
WWW.KATHERINESAUCTION.COM
920-404-0573



KATIE BOURASSA
WI AUCTIONEER 2977
LIVE & ONLINE

TOO MUCH TO HANDLE?
WANT TO KNOW WHAT
YOU'VE GOT?
CONTACT US TO DISCUSS
YOUR OPTIONS!

HOURS BY APPOINTMENT
OR BY CHANCE



KAYLA WATZLAWICK
WI AUCTIONEER 3104
ONLINE SPECIALIST

Performance

BATLEY
CPA, LLC

www.batleycpa.com

Appleton	Green Bay	Neenah
2919 N. Ballard Rd	100 Packerland Dr	333 N. Commercial St
920-738-9993	920-497-1040	920-725-1985

Timely
Meaningful
Accurate

Tax, accounting, and advisory services for businesses and individuals

"Relax and Enjoy the Crazy"



A "Big City" vibe in a small town.

Comfort food meets culinary eating experience along with craft cocktails, wine, and bourbon to make your heart sing.

192 Main St, Menasha • 920-570-5703 • rustedroostrb.com



hairfree
SOLUTIONS

The Fox Cities' Premier
Permanent Hair Removal Provider

Offering the most advanced
technology in PAINFREE laser hair
removal as well as electrolysis
permanent hair removal services!

115 S Maple Street • Kimberly, WI 54136
920.850.5071 • hairfreesolutionswi.com



TOWER CLOCK
EYE CENTER



EYES ARE ALL WE DO.

See Wisconsin's most experienced laser cataract surgeons.
Providing excellent outcomes for our patients for over 40 years.

Cataracts • Glaucoma • Cornea • LASIK

920-499-3102

APPLETON

GREEN BAY | SHAWANO

TOWERCLOCKEYECENTER.COM





See Door County Like Never Before!



Visit the Jim Kress Maritime Lighthouse Tower at the Door County Maritime Museum, located on the working waterfront of Sturgeon Bay! Exhibits within the Tower use state-of-the-art interactives designed to immerse visitors in Door County's rich nautical heritage. The 118-foot Kress Tower provides incredible views of Sturgeon Bay and the bay of Green Bay.

920.743.5958 | www.dcm.org | #dcmaritime

 **EAGLE**® SUPPORTING THE ARTS SINCE 1971
PERFORMANCE PLASTICS



2929 W. EVERGREEN DR. APPLETON, WI

920-739-8841

www.eagle-plastics.com



Outstanding Value ~ Exceptional Service

800-398-2667 • www.covantagecu.org
Appleton • Neenah • Menasha



Schedule Your
TOUR TODAY



TRUSTED • LOCAL • QUALITY

RESIDENTIAL | COMMERCIAL

- **Shingles**
- **Flat Roofs**
- **Seamless Gutters**
- **Gutter Protection**
- **Attic Insulation**
- **Siding**
- **24/7 Emergency Service**

Since 1934
SECURITY
LUEBKE ROOFING INC
(920) ROOFING

OWENS CORNING ROOFING **PLATINUM**
PREFERRED CONTRACTOR

GutterTopper
When It Pours, It Reigns.®

Get Your
FREE Estimate
Now!



3921 E. Endeavour Drive | Appleton | (920) 766-3464
www.920roofing.com

THIS IS OUR WHY

Supporting our community and helping patients in need.
Join us to provide the lifesaving gift of blood.



RAYNE



HEATHER & ELLA



QUINTIN

Schedule a donation | communityblood.org



**THE COMMUNITY
BLOOD CENTER**
connecting lives | sharing life



Meet your Fox Valley orthodontics family



Appleton

2422 N Richmond St.
(920) 739-2400

Oshkosh

2626 W 9th Ave.
(920) 231-4922

 vividorthowi.com



Dr. Mike Maslowski

Dr. Brian Michel

- Invisalign®
- Braces
- Digital impressions
- Palatal expanders
- Airway treatment
- Gummy smile treatment
- Surgical treatment
- Early interceptive exams



CONTACT US

INSPIRING CREATIVITY, STRENGTHENING COMMUNITIES



Proud supporter of the
Fox Cities Performing
Arts Center



BankFirst

www.bankfirst.com

MEMBER FDIC
EQUAL HOUSING LENDER

Think Hallmark
REAL ESTATE

We Care About You!

(920) 702-0123 | thinkhallmark.com

2023 CHOICE AWARDS FINALIST
2024 CHOICE AWARDS FINALIST

_____ matters to **me.**

Want to support causes you're passionate about but aren't sure where to begin?

We can guide you.

cffoxvalley.org/matters | 920.830.1290



Together we flourish.
Community Foundation™
for the Fox Valley Region

Herrling Clark

LAW FIRM LTD.

When your future
is at stake.®

*Proud to support the community
and the performing arts*



920.739.7366
1.800.559.7366

800 N. Lynndale Dr.
Appleton WI 54914
herrlingclark.com

Offices also located in
Oshkosh, Green Bay,
and Waupaca

In loving memory of

Don R. Herrling
1928-2022

and

Charles J. Hartzheim
1941-2021



JUDY CRAYMER, RICHARD EAST AND BJÖRN ULVAEUS FOR LITTLESTAR
IN ASSOCIATION WITH UNIVERSAL

PRESENT

MAMMA MIA!

MUSIC AND LYRICS BY

BENNY ANDERSSON
BJÖRN ULVAEUS

AND SOME SONGS WITH STIG ANDERSON

BOOK BY CATHERINE JOHNSON

PRODUCTION DESIGNED BY
MARK THOMPSON

LIGHTING DESIGNED BY
HOWARD HARRISON

SOUND DESIGNED BY
ANDREW BRUCE &
BOBBY AITKEN

MUSICAL SUPERVISOR, ADDITIONAL MATERIAL
& ARRANGEMENTS
MARTIN KOCH

CHOREOGRAPHY
ANTHONY VAN LAAST

DIRECTED BY
PHYLLIDA LLOYD

MAMMA MIA!

NORTH AMERICAN PRODUCTION TEAM

Director	PHYLLIDA LLOYD
Choreographer	ANTHONY VAN LAAST
Production Designer	MARK THOMPSON
Lighting Designer	HOWARD HARRISON
Sound Designers	ANDREW BRUCE BOBBY AITKEN
Musical Supervisor, Additional Material & Arrangements Transcribed by	MARTIN KOCH ANDERS NEGLIN
Associate Director	MARTHA BANTA
Associate Choreographer	JANET ROTHERMEL
Associate Musical Supervisor	DAVID HOLCENBERG
Associate Set Designer	NANCY THUN
Associate Costume Designer	LUCY GAIGER
Associate Lighting Designers	ED McCARTHY, ANDREW VOLLER
Associate Sound Designer	DAVID PATRIDGE
Associate Hair Designer	JEFF KNAGGS
Company Manager	MICHAEL SANFILIPPO
Production Stage Manager	LARRY SMIGLEWSKI
Executive Producer	BESPOKE THEATRICALS AMY JACOBS
General Management	WORK LIGHT PRODUCTIONS ANIÈLE FORTIN-PERKELL, MATT KUNKEL
Production Management	PORT CITY TECHNICAL RYAN GEORGE
Casting Director	TARA RUBIN CASTING KEVIN METZGER-TIMSON, CSA
Tour Booking Agency	THE BOOKING GROUP MEREDITH BLAIR, KARA GEBHART
Tour Marketing & Press	ALLIED GLOBAL MARKETING
Content & Social Media	THINK TANK



Are you...
Always tired?
Struggling to lose weight?
Having trouble losing body fat?
Dealing with sugar cravings?
Struggling with high blood sugar?

I have totally found something
helping me with it all!

Scan my QR Code below
for more information.



BUILD A MIND + BODY CONNECTION FOR SUCCESS

85%
felt less
hungry[‡]

90%
ate less
at meals[‡]

96%
choose smaller
portions[‡]

Small Actions = Big Results.

The ~~doctor~~ clinical
results are in:

- 140% increase in GLP-1 on average. ^Ω
- 9 lbs lost on average in 8 weeks and up to 25 lbs in 12 weeks[‡]
- 100% who lost weight did NOT lose muscle[‡]
- Up to 27% decrease in visceral fat.[‡]
- Up to 5% decrease in total body fat[‡]

GLP-1, a vital hormone for metabolism and appetite, acts as a master metabolic switch. Many individuals, due to genetic factors or health issues, struggle to produce optimal GLP-1 levels.

Ω Results based on a randomized 12-week human clinical study.

‡Results may vary. Typical weight loss using this product in a 12 week weight management program is 1-2 pounds per week. This product should be used in conjunction with a healthy diet and regular exercise. Consult with a healthcare provider before starting any weight loss program.

* These statements have not been evaluated by the Food and Drug Administration. These products are not intended to diagnose, treat, cure or prevent any disease.

Music
in the soul
can be heard
by the universe.

—Lao Tzu

Free Hearing Test
30-day Trial
Satisfaction Guaranteed



Haviland Hearing Aids, Inc
1336 E Wisconsin Ave. Appleton, WI 54911

920.733.7525

www.havilandhearing.com



Peter J. Zellmer, Au.D., CCC-A

Celebrating more than 60 years of hearing healthcare in the Fox Cities!



history • art • culture

Celebrating 100 Years
of History, Art, & Culture at
the *Oshkosh Public Museum*



Visit and see
the last original
Tiffany Studios
commission open
to the public
worldwide.

1331 Algoma Boulevard, Oshkosh WI 54901 • 920.236.5799 • oshkoshmuseum.org

CAST



**CHRISTINE
SHERRILL**



**AMY
WEAVER**



**CARLY
SAKOLOVE**



**JALYNN
STEELE**



**ROB
MARNELL**



**JIM
NEWMAN**



**VICTOR
WALLACE**



**GRANT
REYNOLDS**



**JUSTIN
SUDDERTH**



**ETHAN
VAN SLYKE**



**LENA
OWENS**



**HALEY
WRIGHT**



**SARAH
AGRUSA**



**ALESSANDRA
ANTONELLI**



**CARO DAYE
ATTAYEK**



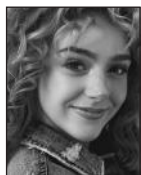
**ADIA
OLANETHIA
BELL**



**COLLIN J.
BRADLEY**



**EMILY
CROFT**



**MADISON
DEADMAN**



**JORDAN
DE LEON**



**NICO
DIPRIMIO**



**PATRICK
DUNN**



**ANDY
GARCIA**



**STEPHANIE
GENITO**



**DANNY LOPEZ-
ALICEA**



MAKOA



**JASMINE
OVERBAUGH**



**GRAY
PHILLIPS**



**BLAKE
PRICE**



**DORIAN
QUINN**



**LAUREN
SOTO**



**GEORGE
VICKERS V**

CAST

(in order of appearance)

Sophie Sheridan	AMY WEAVER
Ali	HALEY WRIGHT
Lisa	LENA OWENS
Tanya	JALYNN STEELE
Rosie	CARLY SAKOLOVE
Donna Sheridan	CHRISTINE SHERRILL
Sky	GRANT REYNOLDS
Pepper	JUSTIN SUDDERTH
Eddie	ETHAN VAN SLYKE
Harry Bright	ROB MARNELL
Bill Austin	JIM NEWMAN
Sam Carmichael	VICTOR WALLACE
Father Alexandrios	BLAKE PRICE

THE ENSEMBLE

ALESSANDRA ANTONELLI, CARO DAYE ATTAYEK, ADIA OLANETHIA BELL,
COLLIN J. BRADLEY, EMILY CROFT, MADISON DEADMAN, JORDAN DE LEON,
NICO DiPRIMIO, PATRICK DUNN, STEPHANIE GENITO, MAKOA,
JASMINE OVERBAUGH, BLAKE PRICE, DORIAN QUINN

UNDERSTUDIES

*Swings and understudies never substitute for listed performers
unless a specific announcement is made at the time of the appearance.*

*For Sophie Sheridan—ALESSANDRA ANTONELLI, MADISON DEADMAN
for Ali—SARAH AGRUSA, ADIA OLANETHIA BELL
for Lisa—CARO DAYE ATTAYEK, ADIA OLANETHIA BELL
for Tanya—STEPHANIE GENITO, JASMINE OVERBAUGH
for Rosie—EMILY CROFT, JASMINE OVERBAUGH
for Donna Sheridan—EMILY CROFT, STEPHANIE GENITO
for Sky—COLLIN J. BRADLEY, ETHAN VAN SLYKE
for Pepper—JORDAN DE LEON, MAKOA
for Eddie—NICO DiPRIMIO, MAKOA
for Harry Bright—PATRICK DUNN, BLAKE PRICE
for Bill Austin—PATRICK DUNN, BLAKE PRICE, DORIAN QUINN
for Sam Carmichael—BLAKE PRICE, DORIAN QUINN
for Father Alexandrios—PATRICK DUNN, DANNY LOPEZ-ALICEA*

SWINGS

SARAH AGRUSA, ANDY GARCIA, DANNY LOPEZ-ALICEA,
GRAY PHILLIPS, LAUREN SOTO, GEORGE VICKERS V

DANCE CAPTAIN

DANNY LOPEZ-ALICEA

ASSISTANT DANCE CAPTAIN

GRAY PHILLIPS

THE BAND

*Conductor/Keyboard—MATTHEW CROFT
Associate Conductor/Keyboard—DANIEL KLINTWORTH
Guitars—NICK GREATHOUSE, BENJAMIN SAMUELSON; Bass—NOGA SHEFI;
Drums—KEVIN McNAUGHTON; Keyboard Programmer—ETHAN DEPPE;
Music Coordinator—MICHAEL AARONS*

SCENES & MUSICAL NUMBERS

in alphabetical order

“CHIQUITITA”
“DANCING QUEEN”
“DOES YOUR MOTHER KNOW”
“GIMME! GIMME! GIMME!”
“HONEY, HONEY”
“I DO, I DO, I DO, I DO, I DO”
“I HAVE A DREAM”
“KNOWING ME, KNOWING YOU”
“LAY ALL YOUR LOVE ON ME”
“MAMMA MIA”
“MONEY, MONEY, MONEY”
“ONE OF US”
“OUR LAST SUMMER”
“SLIPPING THROUGH MY FINGERS”
“S.O.S.”
“SUPER TROUPER”
“TAKE A CHANCE ON ME”
“THANK YOU FOR THE MUSIC”
“THE NAME OF THE GAME”
“THE WINNER TAKES IT ALL”
“UNDER ATTACK”
“VOULEZ-VOUS”

On a Greek Island, a wedding is about to take place...

PROLOGUE

Three months before the wedding

ACT ONE

The day before the wedding

ACT TWO

The day of the wedding



The use of any recording device, either audio or video, and the taking of photographs, either with or without flash, is strictly prohibited. Please turn off all electronic devices such as cellular phones, pagers and watches.

WHO'S WHO in the CAST

CHRISTINE SHERRILL (*Donna Sheridan*) last enjoyed the role of Donna during her residency with the Las Vegas company of *Mamma Mia!* Other national credits include *Kiss Me, Kate* (Kate); *Next to Normal* (Diana); *Guys and Dolls* (Adelaide); *Sunset Boulevard* (Norma Desmond), which earned her the Joseph Jefferson Award. TV/film/video: "FBI: Most Wanted," "Prophet," "Red Dead Redemption," *Landline*. @christinesherrill. "Love to my boys."

AMY WEAVER (*Sophie Sheridan*). Favorite credits: *Jersey Boys* national tour (Francine), Hong Kong Disneyland (Merida). WKU alum. "Special thanks to Kevin-Metzger Timson and Tara Rubin Casting, Bloc, my incredible family and God!" Believes in mermaids and magic! @dreamweaver90210.

CARLY SAKOLOVE (*Rosie*) played Rosie in *Mamma Mia!*'s 2013/14 national tour and on Royal Caribbean! Off-Broadway: *The Book of Merman* (Ethel), *NEWSical the Musical*, *The Marvelous Wonderettes* (Betty Jean). TV: "The Watcher" (Netflix). Film: Joanna Gleason's *The Grotto*. Singing impressionist headliner on Celebrity Cruises. Boston Conservatory graduate. Instagram: @carlysakolove. "For my family!"

JALYNN STEELE (*Tanya*) is thrilled to tour with *Mamma Mia!* Broadway: *The Lightning Thief* (Sally and others). Off-Broadway: *Sistas* (Dr. Simone). National/International tours: *Fosse* (Star). Regional theater: *Rock of Ages* (Justice), *Joseph...* (Pharaoh) and *Mary Poppins* (Mrs. Corry). Television: "Titanique The Musical: Livestream" (Ensemble) and "Sesame Street." "Love to my family and friends." @Jalynn_The_Entertainer.

ROB MARNELL (*Harry Bright*). Broadway: *Tina: The Tina Turner Musical* (OBC), *Beautiful* (Gerry Goffin u/s), *Gettin' the Band Back Together* (Joe Perry). Other: *Jersey Boys* (Bob Gaudio in Las Vegas, Joe Long in Clint Eastwood film), *Rock of Ages* (Stacey Jaxx). B.F.A. Elon University. Original comedy and music: robmarnell.com. "Endless love to Laurel and our baby boy. For Elliot." @robmarnell.

JIM NEWMAN (*Bill Austin*). Broadway: *Hands on a Hardbody*, *Curtains*, *Minnelli on Minnelli*, *Steel Pier*, *Sunset Boulevard*, *Tommy*. First national tours: *Kiss Me, Kate*; *Big*; *Joseph...Dreamcoat*. Film/television: "Succession," "And Just Like That," "The Equalizer," "FBI: Most Wanted," "Daddyhunt," "After Forever," *Love Is Strange*, *Hiding in Daylight*. The Cowboy in Village People.

VICTOR WALLACE (*Sam Carmichael*). B'way: Sam Carmichael in *Mamma Mia!* final cast. Off-B'way: *Far From Heaven* at Playwrights Horizons (cast recording). Tours: *The Phantom of the Opera* (Buquet, Phantom u/s), *Les Misérables* (Enjolras). Las Vegas: *Mamma Mia!* (Sky) at Mandalay Bay

Casino. Regional: *Fun Home* (Bruce Bechdel) at Coachella Valley Rep, *Dragone's Carmen* (Escamillo) at La Jolla Playhouse.

GRANT REYNOLDS (*Sky*) is blessed to be making his national tour debut with this beautiful company! Credits: Billy Porter's directorial debut, *Anything's Possible* on Amazon Prime, *Sweeney Todd* and *The Color Purple* (Muny). He is thankful to God, his fantastic family and his amazing team. Carnegie Mellon MT '21. "For Grandma and Grandpa." @grantreynolds.

JUSTIN SUDDERTH (*Pepper, Ensemble*). National tour debut! Recent: *The Color Purple*, *Jimmy Buffet's Escape to Margaritaville*, *Evita*. Thank you to DGRW, friends and family for their continued guidance and support. Probably thrifting. "Love you momma!" 757 @justinaaronsudderth.

ETHAN VAN SLYKE (*Eddie, Ensemble, u/s Sky*). Regional: *Goodspeed (South Pacific)*, *The Munny (West Side Story)*, *Arena Stage (Newsies)*. Gratitude to HCKR, Tara Rubin Casting, his teachers and his family/friends. Go blue! ('24). @ethan.vanslyke.

LENA OWENS (*Lisa, Ensemble*) is thrilled to be making her national tour debut with this company! She's performed at the Munny and Kennedy Center, and was last seen as Peggy Sawyer in *42nd Street* (MTW). S/o mom and dad!

HALEY WRIGHT (*Ali, Ensemble*). Prior to this tour, Haley had been to only a handful of U.S. states, so getting to travel and do what she loves is just an absolute treat. Love and thanks to all her people! @haleyleft.

SARAH AGRUSA (*Swing, u/s Ali*) is thrilled to be making her professional debut in *Mamma Mia!* She is a proud graduate of CAP 21/Molloy University and would like to thank her family/friends for their love and support! Instagram: @sarah_agrusa.

ALESSANDRA ANTONELLI (*Ensemble, u/s Sophie*). Broadway national tour debut! Off-B'way: *Waiting in the Wings*. Regional: *Sister Act, The Addams Family*. Voice work includes Netflix and commercials. B.F.A. NYU! Gratitude to TRC, LDC, her family and the stellar MM team! For her Mamma. @alessandra_antonelli.

CARO DAYE ATTAYEK (*Ensemble, u/s Lisa*). Nat'l tours: Disney's *Aladdin*, *Hairspray*. Select regional: Signature Theatre, The REV, Arts Center, New London Barn. Elon B.F.A. MT '19. "Love to my parents, grandparents, family, friends, Pete, Tara Rubin Casting and Hybrid!" @caro_daye.

ADIA OLANETHIA BELL (*Ensemble, u/s Ali, u/s Lisa*). National tour debut! Regional faves: *The Wizard of Oz* (Dorothy, Capital Rep), *The Comedy of Errors* (u/s Luciana, Chicago Shakes). B.F.A.: The University of Arizona. Rep: Gray Talent Group. "I love you Mom!" IG: @adia_bell.

Put yourself in the

LIMELITE™

LimeLite chairs present
a graceful shape to
elevate aesthetics
in any environment.

PROUD SUPPORTER OF THE PERFORMING ARTS



ki.com

Are you on the right path to Retirement?



Photo by Kim Thiel Photography

Let our team at Knuth Financial Life Planning be your guide.

We are a comprehensive firm that creates unique, handcrafted plans for your voyage to retirement and beyond.

Contact us for information about how Knuth Financial Life Planning can help you, or to schedule a consultation.



KNUTH

Financial Life Planning

WEALTH MANAGEMENT | RETIREMENT & ESTATE PLANNING | TAX STRATEGIES

Kay M. Knuth, CFP®, Kolby Knuth, CPA, & Chris Hoffman, CFP®, AIF®

901 S. Lawe Street, Appleton

920.830.2077 knuthoffice@knuthflp.com

www.knuthflp.com



Post Crescent's 2024 Best of the Valley Community's Choice Award Winner-Best Financial Planning Services and Best Accounting Firm. These awards are based on a poll of the Post Crescent's readers. Results announced July 24, 2024. This award is not indicative of investment performance.

— 175 YEARS —
MENASHA
C O R P O R A T I O N
— SINCE 1849 —

Celebrating 175 years of packaging
and supply chain innovation. We're proud of
our roots in the Fox Cities and are committed
to supporting the community we call home.



WISCONSIN
MANUFACTURER
OF THE YEAR
35th Annual Winner

Expert Spine Care Close to Home



excellence in brain,
spine and pain care

**neuroscience
group**

**Total spine care for over 30 years:
physical therapy, pain management, scoliosis,
neurosurgery and minimally invasive surgery**

neurosciencegroup.com
920-725-9373

WHO'S WHO in the CAST

COLLIN J. BRADLEY (*Ensemble, u/s Sky*). Nat'l tour: *Aladdin* (Aladdin u/s), Regional: Munny, Drury Lane, Marriott and Maltz-Jupiter Theatre. TV: "Macy's Thanksgiving Day Parade." Love and Thanks to Nicole and to Tara Rubin. @collinjbradley.

EMILY CROFT (*Ensemble, u/s Donna, u/s Rosie*). National tour: *Rock of Ages* 10th anniversary. TV/film: "Law & Order: Organized Crime." Other: Disney World, Disney Cruise Line. B.F.A. SUNY Buffalo. Thanks to ATB, Martha and Janet. "Love to my family and Josh." @emlurr.

MADISON DEADMAN (*Ensemble, u/s Sophie*). B.F.A. graduate of CCM, performed in regional productions of *Cabaret*, *Les Misérables* and *Rock of Ages*, and appears in TV and film. Stay tuned @mjdeadman and madisondeadman.com. Much love to Connor, her parents and TTH agents.

JORDAN DE LEON (*Ensemble, u/s Pepper*). National tour: *The Prom*. Select regional: The Munny, PCLO, Seattle Rep, Fulton Theatre, DCPA, Pasadena Playhouse, The 5th Avenue Theatre. CCM. Rep: The Price Group. "For my family." IG: jordan_deleon_.

NICO DIPRIMIO (*Ensemble, u/s Eddie*). Tours: *Charlie and the Chocolate Factory*, Jimmy Buffet's *Escape to Margaritaville*, *Elf*, *Charlie Brown Christmas Live*. Regional: *Mamma Mia!*, *The Little Mermaid*, *Guys and Dolls*. Love to his whole family! Thanks to Tara Rubin Casting, UIA, JHA! @nicoo_d.

PATRICK DUNN (*Ensemble, u/s Bill, u/s Harry, u/s Father Alexandrios*). Recently seen leading the national tour of *Les Misérables* as Valjean. Other credits include *The Phantom of the Opera* (Phantom u/s), *Waitress* (Pie Eater), *Candide* (@Lincoln Center), *A Christmas Carol* (@MSG)—TCB. @thepattydwagon. patrickhdunn.com. 0 Tonys.

ANDY GARCIA (*Swing*) is ecstatic to put on his dancing flippers! Tour: *Elf* ('17-'18). Regional: *Mamma Mia!*, *Escape to Margaritaville*, *Holiday Inn*. Boston Conservatory graduate. "Love and gratitude to my family, friends, Daniel Hoff Agency and Nick!" @andygarsha16.

STEPHANIE GENITO (*Ensemble, u/s Donna, u/s Tanya*) is over the moon to be making her tour debut! Regional: *If/Then*, *Rent*, *A Chorus Line*, *American Idiot*. "Gratitude to the TPG team, my family, the TGIF crew, my bestest Bear. For my Dancing Queen." @sgenito.

DANNY LOPEZ-ALICEA (*Swing, u/s Father Alexandrios, Dance Captain*) is thrilled to be back on the road with *Mamma Mia!* National tours: *Mamma Mia!*, *Something Rotten!* Cruises: *Kinky Boots* (NCL), *Priscilla...* (NCL). Regional: *In the Heights* (Engeman), *The Producers* (ACCC), *La Cage...* (ACCC), *WSS* (Palace Theatre). @dannyllopezalicea.

MAKOA (*Ensemble, u/s Pepper, u/s Eddie*) is gracious to be making their national tour debut with

Mamma Mia! A Native Hawaiian of Hilo, Hawaii. Kamehameha Schools ('17), Performing Arts Project ('18), NYU Tisch ('22). Mahalo Ke Akua! @makoanyc.

JASMINE OVERBAUGH (*Ensemble, u/s Tanya, u/s Rosie*) is aware of the power of live theater and grateful to provide such a gift. Point Park '17. Notable credit: *Rent* 20th Anniversary! Overwhelming gratitude to Don and Eieshia. Support single moms by donating to momsformomsnyc.org (@jasminemoverbaugh).

GRAY PHILLIPS (*Swing, Assistant Dance Captain*). Touring: *Tina*, *Legally Blonde*. Regional: North Shore Music Theatre, Gateway, Engeman, Theatre By The Sea. Pace MT '19. "For my family and Jacob. Thank you to Janet, Tara Rubin and the whole island fam!" @grelph_. grayphillips.com.

BLAKE PRICE (*Ensemble, u/s Sam, u/s Harry, u/s Bill*). National Tour: *Monty in A Gentleman's Guide to Love & Murder*. TV/Film: "FBI: Most Wanted," "Awkwafina is Nora From Queens." Thank you to The Price Group, my family, and my stunning wife, Kat!

DORIAN QUINN (*Ensemble, u/s Bill, u/s Sam*). As an Oklahoma native and UCO alumni, Dorian is thrilled to be making his tour debut! Credits: *Jersey Boys*, *Xanadu*. Love and thanks to Dorian's family and friends. Glory to God! @dairyquinn22, @dq_drawingsss. DorianQuinn.org.

LAUREN SOTO (*Swing*). Tours: *Jesus Christ Superstar*, *Charlie and the Chocolate Factory*, *West Side Story*. Pace University B.F.A. commercial dance. Many thanks to the *Mamma Mia!* team, Tara Rubin Casting and MTA. "For my Grandma." @laurenmariesoto.

GEORGE VICKERS V (*Swing*) is pumped to be back on tour, this time in Greece! Recently George was seen in *Hell's Kitchen* on Broadway. Tours: *Hairspray*, *Jagged Little Pill*, *A Bronx Tale*. Gratitude to family, chosen family and Brian over at HKA. @gvickers5.

JUDY CRAYMER (*Creator/Producer*) originated the idea of *Mamma Mia!* and, in 1996, founded Littlestar Services Limited with Benny Andersson, Björn Ulvæus and Richard East to produce the stage musical in London. She has since produced 50 productions of *Mamma Mia!* in 16 languages around the world. In recognition of her international success, Judy was presented with a Woman of the Year Award in 2002 and awarded with a CBE on the Queen's Birthday honours list in 2020 for her services to theater and charity. In 2008, Judy produced *Mamma Mia! The Movie* starring Meryl Streep and Pierce Brosnan, which garnered Golden Globe and Bafta nominations. After grossing over \$600 million worldwide, Judy produced an all-new movie musical based on the songs of ABBA for Universal Pictures, *Mamma Mia! Here We Go Again*. Judy is co-executive

WHO'S WHO in the CAST

producer of the new TV entertainment show “Mamma Mia! I Have A Dream,” produced by Thames and Littlestar.

RICHARD EAST (*Producer*) is an originating producer of *Mamma Mia!*, having been involved since its inception. A Tony nominee, he has worked in the entertainment business for 35 years in Australia, London and the U.S.

BJÖRN ULVAEUS (*Music & Lyrics*) was born on April 25, 1945 in Gothenburg. In the mid-'50s, Björn fell in love with rock 'n' roll and skiffle. By the early '60s, he was a member of a folk group called the West Bay Singers. 1966: Björn met with Benny Andersson, a member of Sweden's number-one pop group, The Hep Stars. 1970: Björn and Benny started releasing records as a duo. 1972–82: ABBA. 1982: Björn and Benny started writing the musical *Chess* with Tim Rice. 1986: *Chess* opened in London's West End and, in 1988, *Chess* had its Broadway premiere. 1990: Björn and Benny started to write a new musical. *Kristina from Duvemåla* opened 1995. Björn writes most of the lyrics for the Benny Andersson Orchestra, and has involved himself in the stagings of *Mamma Mia!* 2008: *Mamma Mia! The Movie* was released. 2016: *Mamma Mia! The Party* opened in Stockholm, with Björn as one of the producers. 2018: *Mamma Mia! Here We Go Again* was released. 2021: ABBA announced the release of the first album in 40 years, *Voyage*, as well as a virtual stage show “Voyage,” which opened in a new custom-built arena in London in 2022. Björn is president of CISAC, an umbrella organisation for all royalty collecting societies for songwriters in the world.

BENNY ANDERSSON (*Composer*) was born on December 16, 1946 in Stockholm. 1952: He received accordion lessons from his father and grandfather. 1964–68: Benny was a member of the Hep Stars, Sweden's most popular rock band in the '60s. During this time, he began composing music. “Sunny Girl” and “Wedding” were huge hits for the Hep Stars. 1972–82: ABBA. 1982–84: Benny composed the music (together with Björn Ulvaeus and Tim Rice) for the musical *Chess*. 1987: He began collaborating with Orsa Spelmän rooted in Swedish folk music. 1990–95: Working with Björn, Benny composed the music to *Kristina från Duvemåla*, which premiered in October 1995. 1995: Benny received the title of professor from the Swedish government. 2001: His collaboration with Orsa Spelmän led to the formation of Benny Andersson's Orchestra, a 16-man constellation with vocalists Helen Sjöholm and Tommy Körberg. This has resulted in seven albums and several summer tours. 2007: Benny was inducted in to the Royal Swedish Academy of Music. 2008: He was appointed Honorary Doctor of the College of Humanities at Stockholm University, and at Luleå University of Technology in 2012.

CATHERINE JOHNSON (*Book*). Theater includes *Rag Doll*, *Too Much Too Young*, *Suspension* (Bristol Old Vic); *Boys Mean Business*, *Dead Sheep*, *Shang-A-Lang*, *Little Baby Nothing* (Bush Theatre); *Mamma Mia!* (worldwide). TV includes “Casualty,” “Love Hurts,” “Byker Grove,” “Gold” and original series “Love in the 21st Century.” Film: Catherine wrote the screenplay for *Mamma Mia! The Movie*, released July 2008. Awards include Bristol Old Vic/HTV Playwriting Award, Thames TV Writer-In-Residence Award, Thames TV Best Play Award, U.K. Film Council Best Script Award for *Mamma Mia!* Catherine is patron of Jackie Chan's Dragon Heart Europe charity.

PHYLLIDA LLOYD (*Director*). *Grenfell: In the Words of the Survivors* (National Theatre), Donmar all-female Shakespeare trilogy (London and St. Ann's Warehouse), *The Taming of the Shrew* (The Public Theater at the Delacorte), *Mary Stuart* (Donmar Warehouse, Apollo and Broadway; Tony nomination), *Josephine and I* (Bush Theatre/Joe's Pub), *Mamma Mia!* (London, Broadway, worldwide), *Tina: The Musical* (London, Broadway, worldwide), *The Ancient Mariner* (BAM). Film: *Mamma Mia!* (Universal), *The Iron Lady* (Pathe/DJ Films), *Gloriana A Film* (Illuminations, International Emmy), *Herself* (Element Pictures). Opera in London, Paris, Copenhagen, Tokyo, Barcelona, Toronto.

ANTHONY VAN LAAST (*Choreographer*) is a multi-award winning choreographer of international acclaim. In 1999, he was awarded the MBE and in 2018 the CBE, both for services to dance and choreography. In 2019, he became an Honorary Doctor of the Arts. His work for theater includes *Tina: The Tina Turner Musical*, *Mamma Mia!*, *Sister Act*, *Bombay Dreams*, Andrew Lloyd Webber's *Song & Dance* and *Joseph and the Amazing Technicolour Dreamcoat*. His productions have been nominated for numerous awards, including Helpman, Tony and Oliver awards. His film credits as a choreographer include *Mamma Mia!*, *Mamma Mia! Here We Go Again*, *Beauty and the Beast*, *Harry Potter and the Deathly Hallows*, *Never Say Never Again* and *What's Love Got to Do With It*.

MARK THOMPSON (*Production Designer*). Awards/nominations: two Critics Circle Awards, five Olivier Awards and seven Tony Award nominations. Theater in NYC: *Charlie and the Chocolate Factory*; *The Taming of the Shrew*; *Mamma Mia!*; *Tina: The Musical* (London, Broadway, worldwide), *A Raisin in the Sun* (set only); *Joseph and the Amazing Technicolor Dreamcoat*; *God of Carnage*; *Life (x) 3*; *Bombay Dreams*; *Art*; *Follies* (set only); *La Bête*; *One Man, Two Guvnors*; *The Blue Room*; *Arcadia*. Opera at The Met: *The Queen of Spades*, *Macbeth*. Other work in the U.K. includes multiple productions for the National Theatre and the Royal Shakespeare Company.

WHO'S WHO in the CAST

HOWARD HARRISON (*Lighting Designer*) has been nominated for six Best Lighting Designer Olivier Awards and won for *City of Angels* (Donmar Warehouse) and *Macbeth* (Gielgud Theatre, Lyceum Theatre, Broadway). His recent theater credits include *Das Falco Musical* (VBW Vienna) and *As You Like It* (@sohoplac). His West End productions include *Mamma Mia!* (global), *Blithe Spirit* (Harold Pinter Theatre), *The Wind in the Willows* (Palladium), *Mary Poppins* (Prince Edward Theatre/ New Amsterdam Theatre NY), *Rosencrantz and Guildenstern Are Dead* (Old Vic), *The Importance of Being Earnest* (Vaudeville Theatre), *Guys and Dolls* (Piccadilly Theatre), *Cat on a Hot Tin Roof* (Lyric Theatre). Dance includes *The Phantom of the Opera* (Shanghai Ballet), Matthew Bourne's *Nutcracker!* and *Edward Scissorhands* (Sadlers Wells, U.K. and U.S. tours). Operas include *The Barber of Seville* (Lyric, Chicago), *Nabucco* (Metropolitan, NY).

ANDREW BRUCE (*Sound Designer*) began his theater career at Glyndebourne Festival Opera in 1968 and was appointed head of sound at the Royal Opera House in 1971. A year later, he co-founded Autograph Sound, a leading British sound design and rental company that celebrated its 50th year in 2022. He was appointed Associate Sound Designer for *Evita*, *Cats* and *Starlight Express* and Sound Consultant on the original Paris version of *Les Misérables* in 1981. He subsequently designed the sound for the 1985 London production and all its reproductions. Original West End productions include *Song and Dance*, *Chess*, *Follies*, *Into the Woods*, *Children of Eden*, *City of Angels*, *Martin Guerre*, *The Fix*, *Witches of Eastwick*, *Mamma Mia!*, *Miss Saigon*, *The Secret Garden*, *Chitty Chitty Bang Bang*, *Mary Poppins*.

BOBBY AITKEN (*Sound Designer*). Recent productions include *Tammy Faye* (Almeida) and *Standing at the Sky's Edge* (Crucible Theatre and The National). Bobby's West End and Broadway productions include *Grease* (Piccadilly Theatre), *Mamma Mia!* (worldwide), *Desperately Seeking Susan* (Novello Theatre), *Dirty Dancing* (worldwide), *We Will Rock You* (worldwide), *Lennon* (Broadway), *Cyberjam* (Queen's Theatre), *Blast!* (London, U.S.), *Return to the Forbidden Planet* (Cambridge Theatre, London, U.S., Japan and Australia), *Five Guys Named Moe* (Albery Theatre and tours), *Which Witch?*, *Metropolis* (Piccadilly Theatre). Opera credits include *Carmen*, *Madame Butterfly*, *Aida*, *Cav and Pag*, *Tosca* and *La Bohème* (Royal Albert Hall). Bobby's design for the Australian production of *We Will Rock You* won him the 2005 Helpman Award for Best Sound Design. He worked on the opening ceremony of the 2012 Olympics.

MARTIN KOCH (*Musical Supervision and Orchestrations*). London: *Chicago*, *Pirates Of Penzance*,

The Boy Friend, *Blondel*, *Follies*. International: *Les Misérables*, *Miss Saigon*, *Oliver!*, *Mamma Mia!*, *Billy Elliot*. Orchestrations: *Just So*, *Moby Dick*, *Which Witch*, *Tutankhamen*, *Mamma Mia!*, *Jerry Springer The Opera*, *Billy Elliot*, *Bad Girls*, *Kombat Opera*, *Shoes and Viva Forever*. Also for Shirley Bassey, Charles Aznavour, Jennifer Rush, Micheal Ball, Sir Elton John, Anastasia, Denise Van Outen, Jamelia, John Barrowman, Emeli Sande, Lesley Garrett, Venessa Mae, Will Young, Beverly Knight, Birdy and John Newman. Film: *Mamma Mia! Here We Go Again*. Television: "The Olivier Awards," "The Royal Variety Show," "BAFTAs," "Sports Personality of the Year," "Kombat Opera Music Live," "The Sound of Music Live." Music supervisor: Cameron Mackintosh Ltd, Eurovision Song Contest, Commonwealth Games Handover, London Olympic and Paralympic Ceremonies. Grammy and Tony nomination (*Mamma Mia!*), Tony and Drama Desk winner (*Billy Elliot*).

MARTHA BANTA (*Associate Director*). Associate Director *Mamma Mia!* Broadway, national tour, Las Vegas. Original Associate Director of *Rent* Broadway, tour, London. Director *Rock of Ages* 10th anniversary tour. NYC: Public Theater, Rattlestick, New York Theatre Workshop, Cherry Lane, Lincoln Center. Regional: Portland Center Stage, Cincinnati Playhouse, Pittsburgh Public, PCLO, Ordway, St. Louis Rep, Capital Rep., Berkshire Theatre. Adirondack Theatre Festival's founding Artistic Director of several premieres.

JANET ROTHERMEL (*Associate Choreographer*). Broadway: *Mamma Mia!*, *Sister Act*, *Side Show*, *Joseph... Dreamcoat*. TV: "Dancing With the Stars," Tony Awards, Miss USA/Universe. Film: *Beauty and the Beast* (2017), *Mamma Mia!* (2008).

DAVID HOLCENBERG (*Associate Music Supervisor*) was the original music director of *Mamma Mia!* and is thrilled to be back on the island! Other recent Broadway: *MJ* (Tony and Grammy nominations, Drama Desk Award), *Groundhog Day*, *Matilda*, *Rocky* and *Ghost*. Other credits include the world premiere of *Newsies*, the U.S. premiere of *Ragtime*, *The Radio City Summer Spectacular* starring the Rockettes and *Mamma Mia!* at the Hollywood Bowl.

NANCY THUN (*Associate Scenic Designer*) has designed sets and costumes for theater, television, opera and ice shows but primarily she has served as Associate Set Designer for Broadway plays and musicals such as *Jersey Boys* and preparing them for audiences all over the world!

LUCY GAIGER (*Associate Costume Designer*). Theater: *Jack Absolute Flies Again* (RNT), Associate Costume Designer on *The Ferryman* (Royal Court, West End and Broadway), *The Light in the Piazza* (West End and Chicago), *Lungs* (Old Vic), *A Christmas Carol* (Old Vic), *Venus in Fur*

WHO'S WHO in the CAST

(Haymarket) and *Young Marx* (Bridge Theatre). Associate Costume Designer on *Mamma Mia!* worldwide, including Royal Caribbean International production. Other work: Productions for RSC, Almeida and Donmar Warehouse. Musicals: *Bombay Dreams*, *The Phantom of the Opera*, *Nine*, *Moby Dick*, *Into the Woods*, *Carmen Jones* and *The Wizard of Oz*. Lucy has supervised many plays and designed costumes for Sarah Brightman's world tours. Recent film: *Matilda* (Netflix) and *Wicked* (Universal).

ED MCCARTHY (*Associate Lighting Designer*). Over 80 Broadway, Off-B'way and regional shows. Associate Lighting Designer for all companies of *Mamma Mia!* in the Western Hemisphere since 2000. Television: 23 Tony Awards (seven Emmy nominations), "Live from Lincoln Center," Grammys, "Prairie Home Companion" and more. Graduate of, and teacher at, NYU Tisch School of the Arts.

ANDREW VOLLER (*Associate Lighting Designer*). Theater: Lighting designs for *Riverdance* 25th Anniversary Tour (U.K. and U.S.); *Hello, Dolly!* (Netherlands tour); *I Am from Austria*; *Evita*; *Messiah Rocks*; *Rebecca*; *Romeo and Julia*; *Hair* (Vienna); *Shrek The Musical* (German and international tour); Hans Klok's *The Beauty of Magic* (Las Vegas). Associate Lighting Designer and Programmer for *Mamma Mia!* (London, New York, Australia, Toronto, U.S. tours, Japan, Las Vegas, South Korea, South Africa and the international tour). Programming credits: Rio 2016 Olympic opening and closing ceremonies, Sochi 2014 Paralympic open and closing ceremonies, London 2012 Olympic and Paralympic opening and closing ceremonies, Eurovision Song Contest (2001, 2009 and 2010), *Bombay Dreams* (London and Broadway) and *The Blue Room* (Donmar Warehouse and Broadway).

DAVID PATRIDGE (*Associate Sound Designer*) has been involved with *Mamma Mia!* since 1999 and has participated in creating 12 different productions of the show. He has worked in theater for 42 years and considers his time working on *Mamma Mia!* some of the most memorable! Currently David can be found working at *Harry Potter and the Cursed Child* on Broadway.

TARA RUBIN CASTING (*Casting Director*). Selected Broadway and national tours: *The Outsiders*, *Back to the Future*, *Here Lies Love*, *Bad Cinderella*, *Bob Fosse's Dancin'*, *KPOP*, *Mr. Saturday Night*, *Six*, *Ain't Too Proud*. Selected Off-Broadway: *Sing Street*, *Trevor*, *Between the Lines*, *Clueless*. Film: *Here Today*. Regional: Paper Mill Playhouse, La Jolla Playhouse, The Old Globe, Goodspeed.

MATTHEW CROFT (*Music Director/Keys 1*). Broadway: *The Illusionists: Turn of the Century* (MD/Keys 2). Touring: *Jesus Christ Superstar* (AMD/Keys

2, Assoc. Music Supervisor); *Beetlejuice*, *Something Rotten!*, *Motown: The Musical*, *The Producers*, *Guys & Dolls*. "Thanks to our amazing cast, creative team, crew and our incredible orchestra. All my love to my partner, Aubrey—F&A." matthewcroftmusic.com.

MICHAEL AARONS (*Music Contractor*). Broadway: *Harmony*, *How to Dance in Ohio*, & *Juliet*, *Moulin Rouge!*, *Hamilton*, *Aladdin*, *Little Shop of Horrors*. Upcoming Broadway: *Boop!*, *The Wiz*, *Heart of Rock & Roll*. Current tours: *Hamilton*, *Aladdin*, *Frozen*, *Company*, *Mamma Mia!*, *Moulin Rouge!*, *Jagged Little Pill*. Aarons founded M² Music with Michael Keller. m2music.nyc.

LARRY SMIGLEWSKI (*Production Stage Manager*). Broadway: *Kiss Me, Kate*. National tours: *Tina: The Tina Turner Musical*, *Ain't Too Proud*, *School of Rock*, *White Christmas*. Off-Broadway: *Cagney*, *Sex Tips...*, *All Is Calm*. Regional: The Muny, Theatre Under the Stars, Dallas Summer Musicals, Baltimore Center Stage, etc. For Nettie and Smigs. @LarrySmigs.

ANDREW VOLZER (*Stage Manager*). National tours: *Ain't Too Proud: The Life and Times of the Temptations*. Other credits: iTheatrics, Junior Theater festivals. B.F.A. graduate of CCM. "Thanks to my family and friends for all of their love and support!"

JESS CASANOVA (*Assistant Stage Manager*) is thrilled to be working on *Mamma Mia!* and her first national tour! Regional credits include Stages Houston, American Shakespeare Center, Rec Room Arts, Theatre Under the Stars. Jessica holds a B.F.A. in stage management from The University of Houston. Go Googs! @jess_nova13.

MICHAEL SANFILIPPO (*Company Manager*). Broadway and national tours include *Into the Woods*, *Jagged Little Pill*, *A Christmas Carol*, *Ain't Too Proud* (pre-B'way), *Summer*, *Something Rotten*, *Motown*, *Dreamgirls*, *The Color Purple*, *The Lion King* (L.A.), *Aida* (Broadway), *Beauty and the Beast* (L.A.), *The Phantom of the Opera* (L.A. and S.F.), *Five Guys Named Moe* (B'way) and *Les Misérables* (L.A. and S.F.).

BESPOKE THEATRICALS (*U.S. Executive Producer*). Partners Amy Jacobs and Devin Keudell executive produce and general manage Broadway musicals, plays and tours and served as the general managers for all U.S. AEA productions of *Mamma Mia!* from 2000–2015. Other current productions include *MJ The Musical*, *A Beautiful Noise—The Neil Diamond Musical*, *The Who's Tommy*, *Tina—The Tina Turner Musical*, *Back to the Future the Musical* and *Harry Potter and the Cursed Child*. Bespoke Theatricals has provided consulting services to a variety of international productions, including *Mamma Mia!* on the Royal Caribbean as well as in Mexico, Brazil and Argentina and *After Midnight* and *Beetlejuice* on NCL Cruises. General managers in the firm include David Roth, Danielle Saks and Kate Egan.

WHO'S WHO in the CAST

WORK LIGHT PRODUCTIONS (*General Management*). Formed in 2005, WLP has since grown into a full-service producing, investment, general management and technical supervision company. Current and past productions: Olivier Award-winning production of *Jesus Christ Superstar* (North America, U.K tour), *Ain't Too Proud* (Broadway, North America, West End), *Clue* (North America), *Cluedo* (U.K.) and the North American tours of *Mrs. Doubtfire*, *Mamma Mia!*, *Company*, *Rent*, *An Officer and a Gentleman*, *Motown*, *Something Rotten!*, *Bandstand*, *R&H's Cinderella*, *White Christmas*, *American Idiot*, *In the Heights* and *Avenue Q*. Produced Julie Andrews, *The Gift of Music*. WLP is led by founding partners Stephen Gabriel and Nancy Gabriel. worklightproductions.com.

PORT CITY TECHNICAL (*Production Management*) is based in Charleston, S.C. Also referred to as "Work Light South," PCT was initially started in 1993 as Technical Theater Solutions by Rhys Williams. TTS worked with WLP on many shows, including *American Idiot*, *In the Heights* and *Avenue Q*. Since the conception of PCT, tours with WLP have included *Rent*, *An Officer And A Gentleman*, *Motown*, *R&H's Cinderella*, *Something Rotten!*, *Bandstand*, *White Christmas* and the pre-Broadway *Ain't Too Proud: The Temptations Musical*. Current tours include *Ain't Too Proud*, *Clue*, *Company*, *Mamma Mia!*, *Mrs. Doubtfire* and *Jesus Christ Superstar*.

THE BOOKING GROUP (*Tour Booking Agency*). Current tours include *Hamilton*, *The Book of Mormon*, *Come From Away*, *Funny Girl*, *Hadestown*, *Mamma Mia!*, *Mean Girls*, *MJ*, *Six*, *Tina*, *To Kill A Mockingbird*, *The Wiz*, *Chicago*, *Hairspray*. Future tours: *A Wonderful World*, *Parade*, *Peter Pan Goes Wrong*, *Some Like It Hot* and *Sweeney Todd*.

ALLIED GLOBAL MARKETING (*Tour Marketing & Press*) is a full-service integrated marketing agency working with the world's leading entertainment, consumer and lifestyle brands, including 80+ Broadway shows over three decades. Current tours: *Ain't Too Proud*, *Back to the Future*, *Beetlejuice*, *The Book of Mormon*, *Elf*, *Funny Girl*, *Hadestown*, *The Hip Hop Nutcracker*, *Mamma Mia!*, *Mean Girls*, *Mrs. Doubtfire*, *Pretty Woman*, *Some Like It Hot*, *Wheel of Fortune LIVE!* Upcoming tours: *Mystic Pizza*, *The Notebook*, *The Outsiders* and more.

THINK TANK (*Content & Social Media*), based in Louisville, Kentucky, is a marketing, advertising and social media agency rooted in social storytelling. Think Tank works with local businesses and national touring productions to create compelling, genuine, engaging content. Current tours: *Mamma Mia!*, *Dear Evan Hansen*, *Tina: The Tina Turner Musical*, *Pretty Woman: The Musical*, *Some Like It Hot*, *Elf*, *Wheel of Fortune LIVE*. thinktanklou.com.

STAFF FOR MAMMA MIA!

LITTLESTAR SERVICES LIMITED

Directors Judy Craymer
Benny Andersson, Björn Ulvaeus
Business & Finance Director Ashley Grisdale
General Manager Philip Effemey
PA To Judy Craymer Amanda Horn
Marketing & Communications Director Claire Tearle
Marketing & Social Media Coordinator Ella Jarman
Head of Accounts Jo Reedman
Accountant Sheila Egbugje
Assistant Accountant Ricky Whaites
Accounts Assistant Ruby Tyler
Office Manager Matthew Willis
Receptionist &
Production Assistant Kimberley Wallwork
Legal Services Howard Jones At Sheridans
Production Insurance Services Tysers Insurance
Brokers
Business Manager for Benny Andersson,
Björn Ulvaeus & Scandinavian Press .. Görel Hanser

ON BEHALF OF LITTLESTAR SERVICES LIMITED

International Executive Producer Mark Whittemore
US Executive Producer Amy Jacobs,
Bespoke Theatricals

GENERAL MANAGEMENT

WORK LIGHT PRODUCTIONS

Stephen Gabriel Nancy Gabriel

Anièle Fortin-Perkell,

Chief Operating Officer & General Manager

Matt Kunkel, General Manager

Jordyn David, Assistant General Manager

Brian Harlan Brooks Sanjida Chowdhury

Kimberly Helms Courtney King

Marian Osadebe Casi Pruitt Mitchell Skolnick

PRODUCTION MANAGEMENT

PORT CITY TECHNICAL

Rhys Williams, Vice President of Production

Ryan George, Production Manager

Mackenzie Foster,

Director of Production Operations

Laurence Christopher Tom Klonowski

Adrienne Maurer Hunter Storie

Alli Switalski Tiffany West

CASTING

TARA RUBIN CASTING

Tara Rubin CSA

Merri Sugarman CSA Claire Burke CSA

Peter Van Dam CSA Xavier Rubiano CSA

Kevin Metzger-Timson CSA Louis DiPaolo

Spencer Gualdoni CSA Olivia Paige West

Frankie Ramirez

TOUR BOOKING AGENCY

THE BOOKING GROUP

Meredith Blair Kara Gebhart

Laura Kolarik Stephanie Ditman Sophie Tiesler
thebookinggroup.com

TOUR MARKETING AND PRESS

ALLIED GLOBAL MARKETING

Andrew Damer

Jennifer Gallagher Scott Praefke

Jessica Cary Davis Adina Hsu Amenkha Sembenu

Jessica Steans-Gail Emily Toppen Anne Waisanen

PRODUCTION TEAM

Assistant Director Samantha Tella
Assistant Choreographer.....Ryan Sander
Original Keyboard ProgrammingNick Gilpin
Assistant Costume Designer.....Cat Lovejoy
Assistant Lighting Designer Tyler Dubuc
Assistant Sound Designer.....Kevin Kennedy
Production Wardrobe Tiffany West
Production Hair..... Adrienne Maurer
Production Carpenter..... Tom Klonowski
Production Props John Mark Zink
Production Electrician Michael Anderson
Lighting Programmer Jackson Miller
Production Sound Engineer Joshua Hummel
Production Assistant Angela Dogani

TOURING STAFF

Company Manager Michael Sanfilippo
Assistant Company Manager Arella Flur
Production Stage Manager.....Larry Smiglewski
Stage ManagerAndrew Volzer
Assistant Stage ManagerJess Casanova
Substitute Assistant Stage Manager..... Matt J. Bur
Substitute Assistant Stage Manager Emily Huber
Substitute Assistant Stage Manager.....Berrit Keller
Substitute Assistant Stage Manager...Melissa Sparks
Dance Captain Danny Lopez-Alicea
Assistant Dance CaptainGray Phillips
Head Carpenter.....Will Klein
Assistant Carpenter/FlypersonSam Vettrus
Assistant Carpenter Nate Brooks
Head Electrician MJ Hawley
Assistant Electrician David Salazar
Assistant Electrician/Spots Jeremy Warsitz
Head Sound.....Jeff McWay
Assistant Sound Matthew Crane
Head Props.....Garrett Holmes
Head WardrobeEva Maciek
Assistant Wardrobe Andrea Phillips
Head Hair and Makeup..... Cassandra Takas
Swing Tech Kayla Stillman

Banking City National Bank, Michele Gibbons
Payroll.....Prestige PEO, Payroll Data Processing
HR ConsultantK+K Reset, Kiah Jones &
Karen Robinson
AccountingCBIZ Marks Paneth,
Christopher Cacace, CPA, Petrina Bryan
Bookkeeping..... Galbraith & Co/Jessica Pressman
Insurance.....Maury Donnelly & Parr/Bob Middleton
Legal Counsel (US) Lazarus & Harris LLP
Scott R. Lazarus, Esq.,
Robert C. Harris, Esq.
Immigration Counsel..... Law Offices of Dora M
Komura, PC/Stephanie Friedberg
Original Logo Design ...©Littlestar Services Limited
Production Photography..... Joan Marcus
Physical Therapy Neuro Tour
Travel Agent..... Travel Trust
Housing Road Rebel
Merchandising..... Max Merchandising, LLC/
Randi Grossman
Merchandise Manager.....Brian Estrada
Trucking/Hauling Janco Limited

Music Published by

**EMI Grove Park Music, Inc.
and EMI Waterford Music, Inc.**

CREDITS AND ACKNOWLEDGEMENTS

Scenery constructed and painted by Hudson Scenic Studio, Inc. Sound equipment supplied by Masque Sound. Lighting Equipment supplied by PRG Broadway. Soft goods by I. Weiss and Sons. Costumes executed by Eric Winterling Inc, Arel Costumes, Kate Wyatt, Karen Crighton, Sally Marchant, Lorraine Richards, Rose Chandler, Alida Herbst, Sally Payne. Cornelia James. Tailoring by Kathy Pederson, Millinery by Dolly Hurrán, Barbie McCann, and Megan Ann Richardson. Wetsuits by Snugg Wetsuits. Thanks to Hali Liles. International Costume Coordinator Howard Rayner. Makeup by La Femme Cosmetics. Wigs and hairpieces by WigglePigWigs. Properties by Paragon Theme and Prop Fabrication and Bad Boogie Fabrication. Production outfitting provided by Port City Equipment Rentals. Rehearsed at the New 42nd Street Studios.

Mamma Mia! was originally produced in London by
LITTLESTAR SERVICES LIMITED on April 6, 1999.

Mammamiathetour.com

Facebook: @mammamiathetour

Instagram: @mammamiathetour

TikTok: @mammamiathetour



The actors and stage managers employed in this production are members of Actors' Equity Association, the union of professional actors and stage managers in the United States.



The Press Agents and Company Managers employed in this production are represented by the Association of Theatrical Press Agents & Managers.



The Directors, Choreographers and Associates employed on this production are Members of the Stage Directors and Choreographers Society, a national theatrical labor union.



Backstage and Front of the House Employees are represented by the International Alliance of Theatrical Stage Employees (or I.A.T.S.E.).



United Scenic Artists represents the designers and scenic painters for the American Theatre.



The musicians employed in this production are members of the American Federation of Musicians.



This production is produced by a member of The Broadway League in collaboration with our professional union-represented employees.



Fox Cities Performing Arts Center stage personnel provided by I.A.T.S.E. Local #470.



Simply Nicole Designs

920.217.4289

www.simplynicoledesigns.com



The human side of real estate.™

karl volkman.com

Your real estate resource



Our community is so fortunate to have the lakes and rivers.

If you're considering selling or buying a waterfront home, contact Karl.

Choose **The Karl Volkman Group** for your specific real estate needs

920-450-9400 | www.karlvolkman.com | 4545 W. College Ave., Appleton



WOMEN'S TRIP

Greece

\$2820/person

LEARN MORE
HERE!



A journey crafted just for women!
From Athen's history to the beautiful
islands of Skiathos and Skopelos, renowned
as the stunning film set for an iconic musical,
immerse yourself in Greece's charm.
Join us in Greece July 6-15, 2025!

Starting at \$2,820/person

*Excludes: Airfare, Insurance, Gratuities

Dreaming of destinations beyond Greece? We're here to help!
Connect with our experienced advisors today!

☎ 920-725-2880

🌐 www.bonvoyagebt.com

📍 202 W. Wisconsin Ave, Neenah

Here's to 30 years!



Serving the Fox Valley since 1994.

Come & celebrate with us before the show!

(920) 739-1122

apollonrestaurant.com





LEGACY

PRIVATE TRUST COMPANY



*Committed to your Success,
Invested in our Community*

IN THE SPOTLIGHT



MASTER THE ART OF MOTION

Offering a complete education in both Classical Ballet Technique and Contemporary Dance Technique, **Makaroff School of Ballet** continues to be one of the premier dance schools in Northeast Wisconsin.
105 N. Walnut St., Appleton WI • 920-734-7073



WHERE LIVES ARE ENRICHED AND TRANSFORMED BY GLASS

Bergstrom-Mahler Museum of Glass provides extraordinary glass experiences to spark fun, kindle creativity, and illuminate learning for all. Come visit your museum. FREE general admission, ALWAYS! Visit: bmmglass.com.

YOUR STATEMENT. YOUR STYLE.



Tennie's Jewellery is family owned for more than 100 years. Offering great customer service, knowledgeable staff, unique custom designs, restoration, and appraisals. We want to be your personal jeweler! Free estimates, cleaning and inspections.
Downtown Appleton, 208 E. College Ave. 920-734-1858
Downtown Oshkosh, 523 N. Main St. 920-231-0462
TenniesJewelry.com



EXPLORE ONEIDA

The **Oneida Nation** offers many events throughout the year. From the dancers at the annual pow wow and The Woodland Indian Art Show and Market. Like us on Facebook: Oneida Tourism and be informed of fun things happening north of the valley.
www.ExploreOneida.com



STEAKS, SEAFOOD, AND GERMAN FARE

Mark's East Side is a family-owned fine dining restaurant offering only the highest quality steaks, seafood, and German cuisine. Weekly specials and an extensive wine list can be found during your visit. *Next time out, make it Mark's!*
1405 E Wisconsin Ave., Appleton WI
markseastside.com • 920-733-3600



PLANNING A GATHERING? GIVE IT SOME LATIN FLAIR!

Osorio's Latin Fusion has a plethora of options to make your event truly excellent. We have private & semi-private dining and banquet rooms to accommodate groups from 2-200. We can also bring our Creative Cuisine & Lively Libations to you with our full service catering and food trucks. We offer customized menus, personal attention, budget accommodation, and exceptional service.
1910 N Casaloma Dr., Appleton
www.osorioslatinfusion.com • 920-955-3766



FIGHTING HUNGER. SUSTAINING HOPE.

The **St. Joseph Food Program** supplements nutritional needs—free of charge—for the economically distressed within our local communities through generous donors and volunteers here in the Fox Cities.
stjoesfoodprogram.org • 920-734-9461



GOOD MOOD FOOD

Stuc's Pizza is a local favorite offering Chicago style deep dish, New York style hand tossed, crispy thin crust, calzones, pastas and more! Dine In - Carry Out - Delivery - Unique recipes and quality food. Join us before or after the show! Open Su-Th until 9pm; F & Sa, 10pm. Located 1 mile west of the P.A.C.!
110 N. Douglas St., Appleton WI
stucspizza.com • 920-735-9272



YOUR PEACE OF MIND, WITH A COST GUARANTEE

For over a century and a half, **Riverside Cemetery** has served the families of Appleton and the surrounding area with dignity and compassion. Established in 1870, Riverside was created to provide a beautiful and proper final resting place for family members, as well as a place of serene contemplation for their survivors. Today the cemetery provides many additional services and is dedicated to helping families with all details surrounding their profound loss. Call to schedule your personal consultation.

714 N. Owaissa Street, Appleton
riversidecemeteryappleton.com • 920-733-5629



QUALITY, COMFORT, PERSONALIZED SERVICE

Whether you're looking for walking shoes, work boots or something for everyday wear – **Vanderloop Shoes** has it all! Customers love the large selection of quality footwear and one-on-one customer service. Locally owned and operated since 1945. Visit Vanderloop Shoes – Appleton, Green Bay, Little Chute and Milwaukee.
vanderloopshoes.com



UPLIFTING, INSPIRING, & ROOTED IN COMMUNITY

NEWVoices presents high-quality choral music that engages and enriches communities and our members. We are a mixed-voice adult choir of 80+ volunteer singers who audition, rehearse, and perform like professionals, performing 4-5 concerts annually. NEWVoicesChoir.org



SIP • RELAX • ENJOY

Celebrating 20 years in business, **Copper Rock Coffee** offers the freshest roasted coffee in Appleton! This family-owned business has something for everyone – from coffee, espresso drinks, smoothies, house-made gelato, bakery and desserts, to a deli breakfast, lunch and dinner. Stop in to meet our amazing staff and feel right at home! Catering offered, as well as a rentable gallery and boardroom available!
210 W College Avenue, Appleton
www.copperrockcoffee.com • 920-882-9462



BREAKFAST. LUNCH. DINNER. DESSERT.

Visit **Little Fat Gretchen's Café** for unique daily specials, from-scratch bakery, specialty coffee and more! Serving Waupaca, Stevens Point and surrounding areas since 2012.
108 S. Main St., Waupaca WI
LittleFatGretchens.com • 715-258-0132



DO YOU KNOW A BOY WHO LOVES TO SING?

The **Appleton Boychoir** offers a life-changing musical experience for boys that builds their self-esteem, leadership and collaboration skills, and enriches the community.
AppletonBoyChoir.com • 920-955-2224

newborn children family high school senior

sarah celine photography

(920) 733.7157
sarahcelinephotography.com



since 2003



JOSE MORALES YOUR EDGE IN REAL ESTATE

With 20 years in the real estate industry, I have been exposed to nearly every aspect of this business. If you're thinking of buying or selling, contact me. Let's work together to position your property for a speedy sale at top dollar or find your next dream home.

WWW.JOSEMORALESREALTOR.COM

Jose Morales
CRS, GRI, Global Luxury
920-209-9975
jmorales@coldwellhomes.com
105 E Bell St Neenah, WI 54956



COLDWELL BANKER
REAL ESTATE GROUP



DOWNLOAD OUR MOBILE APP

*Accessing your mobile tickets
has never been easier!*



Access your tickets



Plan your visit




Pre-order drinks
and snacks



Access full event
lineup and
purchase tickets









From everyday
performances to lifelong
memories.

* Kimberly-Clark Cares

Kimberly-Clark is proud to support the performing arts in the community we've called home for more than 150 years.

HUGGIES Cottonelle   *Poise*   pull-Ups *goodnites* **Viva**

www.kimberly-clark.com

MULVA CULTURAL CENTER

arts +
exhibits +
experience

Learn more about exhibits, films, events, and memberships at:
mulvacenter.org



N.E.W. PRINTING
put your imagination to print

Proud to Support the Performing Arts
newprinting.com

Work you can trust... people you can depend on.

The Service Experts



Christensen
HEATING & AIR CONDITIONING INC.
920-731-3002
1609 W. Wisconsin Ave., Appleton, WI
www.christensenheating.com

- Five generations
- Serving the Fox Valley since 1921
- Quality workmanship
- Voted "Best of the Valley" for 6 years

Christensen
HEATING & AIR CONDITIONING INC.
920-731-3002

Visit our showroom
1609 W. Wisconsin Ave., Appleton
www.christensenheating.com
24-HOUR EMERGENCY SERVICE

We're Moving Forward For You



- Fall 2024, New Location!
10 E. College Ave., Suite 2, Appleton
- Expanded Services for Patients
- Greater Community Collaboration
- Better for YOU!

MOSAIC
FAMILY HEALTH

920.832.2783 • mosaicfamilyhealth.org



**TEAMWORK
TRANSFORMS
VISION INTO
REALITY.**



Supporting the performing arts community for more than 60 years.

**Did your checking account
pay you **\$250** last year?**

foxcu.org

Federally insured by NCUA



**Donate today to become
an Annual Partner!**



With a donation of any amount, you will be sharing the power of the performing arts with people of all ages and abilities in the Fox Cities and beyond. Plus you will be recognized as an Annual Partner with exciting benefits!





*Proudly calling the Fox Cities
our home for over 50 years!*

(Front row) **Dr. John Rydlewicz, Dr. Timothy Zuck,**
(Back row) **Dr. Matthew Swanson, Dr. Nicholas Tseffos, and Dr. Christopher Bergstrom**
practice a full scope of their specialty with expertise ranging from dental implant surgery
and wisdom tooth removal to corrective jaw surgery.

- Board Certified Surgeons
- Dental Implants
- Intravenous Anesthesia
- Wisdom Teeth Removal
- Reconstructive Jaw Surgery
- Facial Trauma
- Sleep Apnea



*We are committed to our patients before, during,
and after their surgical experience.*

Integrity and quality patient care creates the foundation for our services!



5395 W. Michaels Drive Appleton 920.739.1214
www.omsfoxcities.com

ANNUAL PARTNERS – WE APPLAUD YOU!

Minds are inspired, lives are transformed, and community is built for all through the Fox Cities Performing Arts Center's programs, made possible by the generosity of Annual Partners. We invite you to join this outstanding group of people who are impacting so many throughout Northeast Wisconsin and beyond.



Want to help make change through the power of performing arts? Every dollar makes a difference! Visit foxcitiespac.com, email giving@foxcitiespac.com or call (920) 730-3782 to donate today.

We thank the following individuals and businesses who have made the commitment to support the arts in our community as Annual Partners of the Fox Cities Performing Arts Center:

Annual Partners as of August 22, 2024

Leader Partner (\$100,000+)

Amcor
The Boldt Company
Kimberly-Clark Corporation
Menasha Corporation
Thrivent

Platinum Partner (\$50,000 - \$99,999)

Bergstrom Automotive
Community First Credit Union
Jewelers Mutual Group
Miller Electric Mfg. LLC
OH SNAP! Pickling Co.
Oshkosh Corporation Foundation
Plexus Corp.
Schneider Foundation, Inc.

Diamond Partner (\$25,000 - \$49,999)

Fox Communities Credit Union
SECURA Insurance Companies

Gold Partner (\$12,000 - \$24,999)

4imprint
Alta Resources
BMO
Capital Credit Union
Courtyard by Marriott Appleton
Riverfront

Katherine and John Davis
Wayne and Suzanne Deitrich
Great Northern
Hartwig Family Foundation
Stephanie Long and Andy Hetzel
Julie Schaller-Schmidt and John Schmidt
Vande Hey Company, Inc.
We Energies Foundation

Silver Partner (\$6,000 - \$11,999)

Associated Bank
Badger Plug Company
Batley's Grill & Bar
Best Western Premier Bridgewood Resort Hotel
Bridgewood Premier Catering
Broadway Across America
Mike and Sharon Brosnan
Canteen Catering
CLA (CliftonLarsonAllen LLP)
Clubhouse Kitchen + Bar
Mr. Marc Evans
Fairfield Inn & Suites Appleton
First Business Bank
Fox Valley Hearing Center, Inc.

Fox Valley Surgical Specialists
Galloway Company
The John and Marilyn Gilbert Charitable Family Fund****
Grant Thornton
Heid Music
Hilton Appleton Paper Valley
JETA Corporation
Johnson Financial Group
Kessler Fahrenkrug Funeral Home
The Leech Charitable Fund*
Michiels Catering
Nicolet National Bank
Angelo and Jennifer Ninivaggi
Ed and Sue Patschke
Karen Phillips
Richard and Kathy Ruhsam
Tom and Mary Schmidt
Mary A. Strange
Theda and Tamblin Clark Smith Family Foundation, Inc.
ThedaCare
John and Becky Tuchscherer
Vande Walle's Candies

YOUR PARTNERS IN REAL ESTATE



Contact Barb and Karen. . . For All Your Real Estate Needs
karenandbarb@coldwellhomes.com



COLDWELL BANKER
REAL ESTATE GROUP

BARB MERRY CRS, GRI, ABR
Senior Broker Associate
(920) 475-6900
Senior Broker Associate

KAREN CAIN GRI, SRES, SRS
Senior Associate
(920) 915-6270
Realtor®

ANNUAL PARTNERS

Silver Partner (\$6,000 - \$11,999)

continued

Wedding Perfect

Teri and Steve Winter

Wipfli LLP

Bronze Partner (\$2,500 - \$5,999)

Robert and Laura Abernathy

David and Sarah Aime

Dennis and Naomi Bahcall

Bank First

John and Lalu Bere

John F. and Dianne Bergstrom

Richard and Jennifer Bergstrom

Tim and Natalie Bergstrom

Thomas and Renee Boldt

Robert W. and Susan T. Brown

Thane and Melissa Bublitz

Jay and Susan Bush

Doug and Gayle Buth

John and Rose Bykowski

Katie Chelsky

CopperLeaf Boutique Hotel & Spa

Deborah and Ignacio Cortina

Crane Engineering

Robert and Patricia Endries

Family Foundation, Ltd.*

Dan and Beth Flaherty

Brian and Jauna Flanagan

Foxley's Gallery LTD.

Pat and Amy Galloway

Theodore Galloway

Tod Galloway

Ray and Genie Georgen

Kevin and Angela Gilligan

Godfrey & Kahn, S.C.

David D. and Kerry S. Gross

Family Fund*

Guy and Brenda Gruett

Kurt and Diane Gruett

Dean and Pam Gruner

Mame and Daniel Heaney

Heartland Business Systems

John and Morgan Hogerty II

Doug and Kay Horan

Heirloom Kitchen Catering

William and Dorian Jordan

Frank and Kim Kearny

Todd and Kelly Kelsey

Mark and Kay Knuth

John and Beckie Krause

Polly and Tim Lehman

D. Holly Lifke

Glenn and Martha McKendrick

Tom and Cheryl Melsen

Chuck and Barb Merry

Sally Mielke

Tim and Ann Moe

Mitchell and Jean Mroz

Scott and Cheri Murphy

Ronald and Ruthellyn Musil Family

Fund*++

Osorio's Latin Fusion

Thomas J. Prosser

Tom and Courtney Rettler

David, Kim and Max Ritzow

Amelia and Walter Rugland

Doug and Carla Salmon

Foundation*

The William J. and Barbara A.

Schmidt Family Foundation, Inc.*

Shirley Schmidt

Seifert Family

Mary and John Sensenbrenner

Susan Spanbauer Schmidt

Mark and Ann Steinmetz

Dave and Shirley Strange

Raymond and Deanna Tetzloff

Catherine Tierney

Terry and Jennifer Timm

David and Tari Toivonen

Sheri and Dean Tuzinkewich

Van Abel's of Hollandtown

Maria Van Laanen

Nathan and Holly Van Zeeland

Bruce and Suzanne VanEnkevort

Mike and Peggy Weller*

Whisk & Arrow Sugar Studio

Woodward Radio Group

Zuppas

Producing Partner (\$1,200 - \$2,499)

Anonymous

Pete and Mary Abraham

ACOCA Café and Roastery

American National Bank - Fox
Cities

Dr. Robert and Mrs. Deborah

Amorde

David and Sarah Anderla and

Family

Appleton Beer Factory

Badger Mining Corporation

The Bar

Peter Bebeau and Kristine

Landreman

Greg and Ginny Behling

Heather D. Beresford

Alyssa Bolante and Matthew Jarrell

Brian and Kerri Brantmeier

Kate and Tom Burgess

Bradley R. Burmeister, MD

Frances L. Burstein, Dr. Penny L.

and Mariana F.J. Krampien

Christensen Heating and Air
Conditioning Inc

Crazy Sweet

Copper Rock Coffee

Kathy and Jim, Liz and Sam

Ducharme

Dr. and Mrs. Timothy Flaherty

The Forster/Bower Family

Fox River Brewery

Fratellos Waterfront Restaurant

G2 Paper, Inc.

Russell and Melanie Geise

George's Steak House

Elizabeth Gibson

Cathie and Greg Gill Sr.

Good Company

Bill and Greta Gudwer

Greg and Karen Hartjes

Marty and Kelli Heindel

Gerald B. Henley

Bill and Fran Henry

Greg Hergert

Marilyn Jens Hetzler

Karen Holthouse

Bill Jansen and Mary Goggans

Lou and Joanne Horn Family

Fund**

Sharon and Katie Hulce

William and Cynthia Jatczak

Dr. Karen and Ted Johnson

Dick and Suzi Jones

Robert and Mary Lou Jones

Zoltan and Kathryn Kadar

Lisa and Kevin Kasperek

Katsu Ya of Japan

Robert and Lynne Keller

Jill Kaiser and Susie Kennaugh

Susan Kinde

Ronn and Denise Kleinschmidt

Paul and Brenda Klister Family

Lisa Knoff

Gregory and Susan Knudson

Jerold and Joy Kobiske

Amy and Nick Krahenbuhl

David and Deb Krueger

Martin and Susan Kruzal

Curt and Karyl Kubiak

The Dave and Trish Kuplic Family

Penny and Mark Kuzdas

Catherine Larsen

Robert and Jodie Larsen

Karen Laws

Legacy Private Trust Company

Lindgren-Galloway Family

Diane and Dan Lynch

Randy and Rhonda Mahoney

ANNUAL PARTNERS

Producing Partner (\$1,200 - \$2,499) *continued*

Peter and Joann Mariahazy
Pilar Martinez
The Melting Pot
Memorial Florists & Greenhouses,
Inc.
Doug and Erica Meyer
On The Mark Solutions, LLC
Dr. Lowell and Mary Peterson
Laurie and David Pieper
Dr. Frank and Nicole Podojil
Jim and Marianne Potter
Pullman's
Troy and Christy Rens
Simon and Melanie Roselaar
Jim and Cindy Russler
Estela Salberg, brokered by eXp
Realty, LLC.
The Salisbury Family
Mark and Jane Savides
Lawrence Sawyer and Debra
McDowall
The Schaufelberger Family
Security-Luebke Roofing, Inc.
Semmerling Security Fence and
Supply
Vern and Katie Schroth
Carey and R.J. Sharpe
Joseph and Lisa Shovan
Paul and Stacy Shrode
Silton Family - Fox Valley
Community Fund*
Wayne and Dorothy Stoflet
Stone Arch Brew Pub, Inc
Darlene G. Stumpf
Gregory Swanson and Ann Gain
TandemHR, Inc
Telmark Sales Solutions
Dave and Jan Tews
Doug Tiede
TML Auto Repair, Body & Detail

Ron and Karen Toshner
Don and Janet Turner
Mike Van Asten
Tim and Tricia Van Rooy
Neil Van Rossum and Stephanie
Becker
Kerri and Ryan Veleke
Dave Volkman
Dale and Carol Westphal
Timothy, Ellen, Max and Bailey
Wheeler
Mark and Amy Willson
Sue and Tom Wingert
Stephen Wuerger
David Wuestenberg
Oliver and Basil Yazbak
Phyllis Zeiss
Tim and Jane Zuck

Debuting Partner (\$600 - \$1,199)

Anonymous (8)
5 Star Insurance Group, LLC
John Anderla
Jack and Kathy Anderson
Jill Anthony
Beverly Armstrong
The Arndt Family
Terry and Pamela Arnold
Mark and Jill Austin
Rosemary J. Baker
Andrew and Ashley Baldwin
Curtis and Kathy Baltz
Douglas and Sheri Barber
Robert J. Bastic II D.D.S.
Batley CPA, LLC
Judy and Larry Benish
Dr. Christoffer and Sara Birn
Ryan and Megan Bly
Linda A. Boldt Fund*
Melanie Bomier
Dave and Linda Bongers
Robert and Mary Boswell
Patrick W. Bourassa

The Bow Tie Group
Don and Bonnie Brandenburg
Zane and Sam Bratt
Bob and Kathy Brost
Ryan and Tara Brzozowski
Michael and Karen Bultman
Dr. Gary Burkhardt and Dr. Brian
Goldshlack
Kathy and Steve Buss
Kathy and Rob Byrne
Michael 'Cal' Calabresa
Tad and Sara Campana
Caribou Coffee
Gordon Case
Jim and Carol Catlin*
Children's Wisconsin
J V H Chong-Garcia
Cleo's Brown Beam
Pat and Kathy Clusman
Greg Coley
Helen Cook
Drs. Adam and Danielle Covach
Christine Cowell
Dr. Douglas and Michelle Coyle
Bradley and Sara Creighton
Jill Custer
Kathy and Shawn Davis
Colleen Davison
Ilya and Tiffany Dayter
Tim and Anne Deacy
Lee and Yvonne DeGroot
Kurtis Drager
Jeff and Kathi Drake
Lyn DuChateau and Daniel
Pawlowski
Dr. Clint and Marcia Dunathan
Mary R. Durkee
Bob and Carol Duszak
David and Kay Eggert
Roger and Susan Elandt
Sheila and Logan Fenolio
Dan and Cindy Ferris Family

VIEWPOINT
SPEAKER SERIES
inspire • connect • grow

Be inspired by fresh perspectives,
shared stories, and compelling
speakers in Thrivent Hall.

foxcitiespac.com/viewpoint

The
**Book
Store**

New & Used

801 W College Ave, Appleton
920-734-8908 • thebookstoreappleton.com
Mon-Fri 10am-7pm, Sat 10am-4pm, Closed Sun

ANNUAL PARTNERS

Debuting Partner (\$600 - \$1,199) *continued*

Sandy and Dwayne Fletcher	John and Sue Larson	Richard and Colette Rohm
Barb and Tom Florack	Shawn and Christi Lemery	Wendy and Jim Rosploch
Mark and Christina Fogarty	Brian and Karen Lohrbach	Janet and Scott Rudolph
Tom and Kathleen Frank	Kevin and Elizabeth Lonergan	Kaydee and Joe Ruppert
Fricke Printing Service, Inc.	Tom and Mary Ann Mack	The Santonato Family
Fred and Amy Jo Fullerton	Bob and Susan Makeever	Schecklman Family
Gloria Gillis	Mike and Stephanie Malaney	Marilyn Schenian and Jeff Cherney, M.D.
Gina Glover and Jeffrey Beiriger	Skip and Ann Maletzke	Bill Schierl and Sarena Melotte
James and Lisa Gresens	David and Cynthia Maltry	Sheila and Bradley Schinke
Deborah S. Griffith	Daniel and Patricia Mangless and Family	Craig and Amy Schmidt
Bill and Ann Gyon Charitable Fund*	Bernadine Martin	Andrew and Lyssa Joy Schmidt
John and Lea Hagins	Paula and Mark McNiel	Bill, Cheryl and Caitlin Schmidt
Dr. Richard and Denise Haight	Juan and Victoria Mesa	Stacy Schrader
Mr. and Mrs. Hansen	Josh and Julie Meyer	Bill, Kristin, Elsie, and Jack Schroeder
C.J. and Chelsie Hardy	Steve and Janet Miller	Todd, Lynn, Kylie and Marissa Schroeder
In Memory of William and Bettyjo Heckrodt	Kurt and Amy Moe	Ron and Mary Schuelke
David and Janice Hegg	Kathy and Rob Molskness	Lisa Schulze
Jim and Janet Hemmen Sr.	Karen and Bill Monfre	Tim and Mary Jo Seline
Dr. Pam Her and Long Vue	Morton Safety	Charles Smith
Chad Hershner and Jeff Amstutz	Dave and Shari Moscinski	Michael and Lexie Smith
Tim and Rita Heyroth	Terry and Victoria Mulder	Lynda Solin
Don and Kris Hietpas	Ben and Jaclyn Mullins	Speedy Clean Drain & Sewer
Judith Hintz	Marvin J. Murphy and Ruth Ann Heeter	John and Susan Spencer
Tiffany and Ryan Hinz	Patrick and Jane Murray	Dennis and Pat Sphatt
Michael and Marcia Hittle	Wayne and Carolyn Nankervis	Dr. Rick and Kristin Staehler
Karen Hoffman and Jeff Schang	Newton Anderson Family	Boyd and JoAnn Sterling
Bryan and Dorothy Hollenbach	North Appleton Dentistry	Dick and Judy Stewart
Drs. Roderick and Paula Hubert	Amanda Olsen	The Stiansen Family
Amy and Timothy Hudson	Scott and Amy Olvey	Luann and William Streur
Allen and Jane Huebsch	Lewis and Erin Orchard	Mike and Debbie Strick
Judith Hug	Paul and Michele Osborne	Corey and Kristy Stumpf
Travis and Sarah-Beth Janssen	Cassandra Osinski and Jon Waterman	Tim and Lynn Suess
Dr. Peter and Wendy Janu	Jesse and Julie Ostrom	Dr. James and Barbara Syverud
Dr. Benjamin and Jennifer Jensen	Beckie and Russell Overholt	Scott and GERALYN Theune
Pat and Lisa Jermain	Adam and Martha Paalman	Mark and Georgie Thompson
Ron and Carol Jochimsen	Don and Jeanne Pappas	Joe and Ann Toonen
Ron and Jane Johnson	Jim Parker	Susan Trams
Klint and Angela Kaddatz	Sanjeev and Megan Patel	Dr. Christina Trombley
Dennis and Ellen Kaminski	Nicholas and Jennifer Paulick and Family	Lawrence Tse and Rick Olig
Mike and Katy Kapocius	Todd and Leela Peebles	The Turner Family
The Kaufman's	Dave and Margaret Perry	Mike and Ann Upchurch
Kelly Davies Homes Team	Karen Pieper	Sarah Van Gheem
Richard and Suzanne Kiefer	Michael and Carol Pokorny	Mark and Pamela Van Hout
Amy and Matt Kierzek	Emily and Jacob Ponkrat	Kris and AJ Van Lith
Lisa Ann King Gehrke and Russell Gehrke	Jeannine Powell	Martha Van Rooy and Connie Walbrun
Kristy and Jason Kolpack	Kent and Kristin Powley Family Fund*	Amy Vandenberg
Liz and Warren Kraft	Protective Coating Specialists	James and Mary VanLieshout
Lee and Betty Kraus	Michael and Sarah Ray	Richard and Elizabeth Verhagen
Julie-Anne and James Kress	Paul and Nancy Repp	Vince Lombardi's Steakhouse
Keith and Rosemary Kwaterski	Aaron and Jessie Rickert	The Wedge Family
Denny and Amy La Barre	Patricia and Gerald Rickman	Terry and Betty Weiland
Tammy Ladwig-Schild Family	Rocket Industrial	Dennis and Mary Ann Wepfer
Lynn Landers		Graham and Barbara Werner



ELLUVIUM FINANCIAL

Planning & Investing for your future

Modern Firm *Experienced Advisors*

- Decades of experience
- New, modern firm
- Integrated technology and solutions
- Comprehensive financial planning and portfolio management

Independent Certified Financial Planners and fiduciaries always working in your best interest.

**Brent
Mares**

CFP®, CRPC®,
AAMS®

**Samuel
Sigler**

CFP®

**Mary
LaPinske**

Operations
Manager

**Cody
Mares**

CFP®, CRPC®,
AMPA®, MSFS

*Growth is at
the root of
what we do.*



Elluvium.com
920-993-2264

*Securities and advisory services offered through
LPL Financial, a Registered Investment Advisor.
Member FINRA/SIPC.*

ANNUAL PARTNERS

Debuting Partner (\$600 - \$1,199)

continued

Kathi Whiteside
The Wiebel Family
Janice Willer
Allan J. and Marvel A. Williamson Fund*
Terry and Sue Woelfel
Tiffany Woelfel
Daniel and Megan Woolf
Aimee Zaleski and Alisa DiSalvo
Bob Zemple
Alex and Jennifer Zenzick
Walt Zerrenner

Directing Partner (\$300 - \$599)

Anonymous (9)
Dr. Zenoun and Enas Abouzamel
Lee and Amy Allinger
Lee and Tina Bahcall
Jamie Bain Reather and Tom Reather
John and Diane Barkmeier
Robert and Andrea Bauman Family Fund*
Julie A. Beckstrom
Ed and Katie Bekx
Marc and Kristin Belanger
Sharon Bergsma
Lori, Katie, and Luke Biedenbender
William and Terri Bittner
Leon and Karla Blair
Lou and Corine Blasczyk
Dan and Melissa Blaylock
Jerome and Kristin Bormes
Dr. Douglas Brahee
Drs. Jan and Sandia Brekke
Jim and Marsha Britt
Jim and Linda Burkhardt
Dennis and Nancie Chuchel
Dr. Kristin Clark
Paul and Michelle Coenen
Darlene Coley
Jay and Linda Cook
Karen Crawford
James and Gail Cummings
De and Dan Dalum
Michael and Priscilla Daniels
Jessica and Jordan Day
Mitchell and Jenny De Bauche
Kristy Deeg and Jennifer Landro
Rick and Sue Detienne
The Dewitt Family
Stacie and Jeremy Dobbe
Mark and Lori Dougherty
Gabrielle and Jeff Dow
Trina and Keith Doxtator

John and Erik Duda-Stavlund
Dr. and Mrs. Timothy Edison
Dale Eggert and Nancy Novotny
Dr. and Mrs. Fagan
Tom and Pat Faley
Dan and Sue Fallon
Shannon and Andrew Featherstone
Tom and Barb Florack
Robert and Rebecca Forbes
Mary Beth Gehrke
Cassie and Zach Genke
J. Douglas and Rebecca Gilbert
Charlie and Beverly Goff
Mary Grace
Priscilla Green and Marlys Foster
Carol Grossman Family
Dustin and Leah Gubin
Erin Hahl and Rachel Knoke
Linda and Ron Hammer
Ms. Greta L. Hammond
Katlyn Hansen
Duane and Rosemary Hanson
Lynn and Clint Hardy
Steven and Betty Hartman
Robert Hausserman
John and Kathy Heck
Angelika Heilman
Dan and Cathy Hein
Jolene Hemp
Laura A. Henke
Thomas K. Hocking
Ann and Gary Hoerning
Fred Hoida and Sue Hoida-Heil
Jeffrey and Susan Hoppa
Anne Jackson
Ronald Jankowski
Jason and Mallory Janquart
Dana and Eric Johnson
Vicky Johnson
Peter and Anne Jones
Jay and Traci Junkins
Nathan and Hope Karth
Marie Kawczynski and Liz Van Handel
Laura J. Keely
Lesley Kieffer and Julie Jacobs
Chris Kietrys and Deanna Willems
Stan and Kathy Kline
Daniel Knapp
Jeffrey and Shelby Knezel Charitable Fund*
Daniel Knueppel and Kevin Stephanie
Trevor and Tamra Knutson
Chuck and Sue Koehler
Ann Marie Koleske
Connie Krueger and Ashley Primley

Chuck and Linda Kuen
Kuhr/Schmidt Family Fund*
Kirby Kulas
Jake and Tracy Lamb
Larry and Penny Lancaster
Steven and Kimberly Langlais
Nancy Lanyi
Matt and Molly Leffel
Stephen and Kathryn Lenz
Jesse Lockstein and Tad Schilke
Nancy and David Lokken
Kevin and Julie Loomans
Mike and Linda Loomis
Harvey and Margaret Lorenz
Guy H. Martinek and Lori L. Hooymann
Dennis and Quinn Martinson
Maureen McCarthy
McGuinness Irish Pub
Komal Mehta and Brent Walker
Bob and Judy Mickelson
Stuart and Sandra Mikkelsen
Kevin and Candice Mortara
Beth Mrozinsky
Bill and Maria Myers
Ellen and Todd Needham
Todd M. Newell and Kevin P. Clavers
David and Melanie Nyquist
Elizabeth and Kathleen O'Connell
Carl Olson and Lauretta Krcma-Olson
Nancy Orlady
Marilyn Ossian
Adam and Jenn Paisier, Rick and Gerri Marion
Thomas and Lori Phillippi
Jason and Mindee Pohl
Rachel and Bernie Pretat
Shannon Prochnow
Peggy R. Qualls
Bill and Natalie Raaths
Carol M. Radtke
Red Shoes, Inc.
Rich and Harriet Redman
Greg and Jean Reed
Marlyce Reed and Mark Szumowski
Eric Reischl and Karen Stuve Reischl
Nicholas and Lucy Reising
Evan Rezin
Roberts Family
Phillip and Ellen Roe
Peter and Fawn Rogers
Larry and Pat Rogers
Keith and Andrea Rohde
Roots of Oak Fund*
Michael and Debbie Rosera

THE IMPACT OF DONATING THEATER TICKETS



Every performance is a celebration of creativity and talent. If you have extra or unused tickets, consider donating them back to the Center up to two business days before the performance. This generous act can make a big difference for people who may not otherwise have an opportunity to experience the arts.

Donating unused tickets requires minimal effort and is an impactful way to contribute. When you donate your tickets, you provide more than just a seat at a show—you offer someone in need a chance to experience the power of live performing arts. For many in our community, access to the arts can be limited due to lack of resources or other barriers. The donated tickets are distributed to local nonprofit organizations ensuring that those who may not have the opportunity to attend can experience the magic of live theater.

This simple act of kindness supports the Center's mission to be a multicultural gathering place for all in our community and is an effective way to foster inclusivity and cultural enrichment.



ANNUAL PARTNERS

Directing Partner (\$300 - \$599) *continued*

Patrick and Cathleen Rothe
 Sherry and Jim Rougeux
 Scott Sabourin
 Faith Sauer
 Martha Sauter
 Dale and Penny Schaber
 Jeff and Vicki Schilleman
 Robert and Carol Schmidt
 Reid and Patricia Schoonover
 Melissa Schumacher and Kyle Roux
 Cathy Scott
 Greg and Lori Seeke
 Tim Short and Ann Vanevenhoven
 Deb and John Skyrms
 Karen Smith
 Cathy and Elizabeth Spears
 Sam and Marta Statz
 Judd and Judy Stevenson
 William Stoeger and Jacquelyn King
 Wayne Stumpf
 Jennifer and Matt Swanson
 Derrick Sytsma and Judy Corrigan
 Addie and Brian Teeters
 Jessica and Mark Thiel
 Jim and Kathy Thunes
 George and Beverly Tipler
 Russell C. and Marianne P. Torres
 Charitable Gift Fund
 William and Leah Totzke
 Kristen Trader
 Jeff Trelka
 Chad Trinkner
 Mike and Sue Turner
 Barbara Uehling
 Troy Van Den Eng
 Brian and Gail Van Dreef
 Cheri Van Eperen
 Peter and Su van Houwelingen
 Roger and Lynn Van Vreede
 Mike and Keri Verstegen
 Austin M. Walls and Kyle Weidman
 The Watson Family
 Jackie and Bob Weber
 Deborah and Gerald Wetter
 Jeffrey and Ann Williams
 Robin Wilson and Scarlett Koehler
 Gail Ann and John Winkler
 John and Mary Wisniewski
 Jake and Hilary Woodford
 Judy Worachek
 Bill and Beth Wyman
 Peter and Valerie Zellmer
 Gregory and Linda Zickuhr
 Patricia Ziehl

- * Fund within the Community Foundation for the Fox Valley Region
- ** Fund within the Shawano Area Community Foundation
- **** Fund within the Oshkosh Area Community Foundation
- ++ with gift matching funds from the McCormick Foundation



Support the Mission
Donate to your Fox Cities P.A.C. and become an Annual Partner today!

150 YEARS ^{OF} MUSIC. COUNTLESS MEMORABLE MOMENTS.

Celebrate 150 years of excellence with the Lawrence University Conservatory of Music and experience a future filled with remarkable performances that shape the next chapter in our storied tradition.



Explore our performance schedule, plan to attend, and be part of this historic year.



LAWRENCE UNIVERSITY
CONSERVATORY OF MUSIC

150
years



A *Legacy* OF LANDSCAPE EXCELLENCE



**Vande Hey
Company, Inc**

N2093 CNTY RD N, APPLETON • WWW.VANDEHEYS.COM • 920.788.6344

FOCUS ON WHAT YOU DO BEST.

Leave the legal work to us.

920-882-4070
MCCARTYLAW.COM



75

McCarty | Law LLP
SINCE 1949

Business & Corporate Law

Commercial Litigation

Creditor Law & Debt Collection

Construction Law



Giving back moves us all forward.

Hundreds of SECURA employees give their support to organizations making a difference. Because we want a brighter future for everyone.

Learn more at secura.net/community.



Making Insurance Genuine

Commercial • Specialty • Agribusiness • Farm



Your Journey, Our Commitment

Meeting customers where they are and collaborating to deliver tailored solutions.



APPLETON AIRPORT



More Time to Make Memories

Appleton Airport gets you there faster & easier



book now

