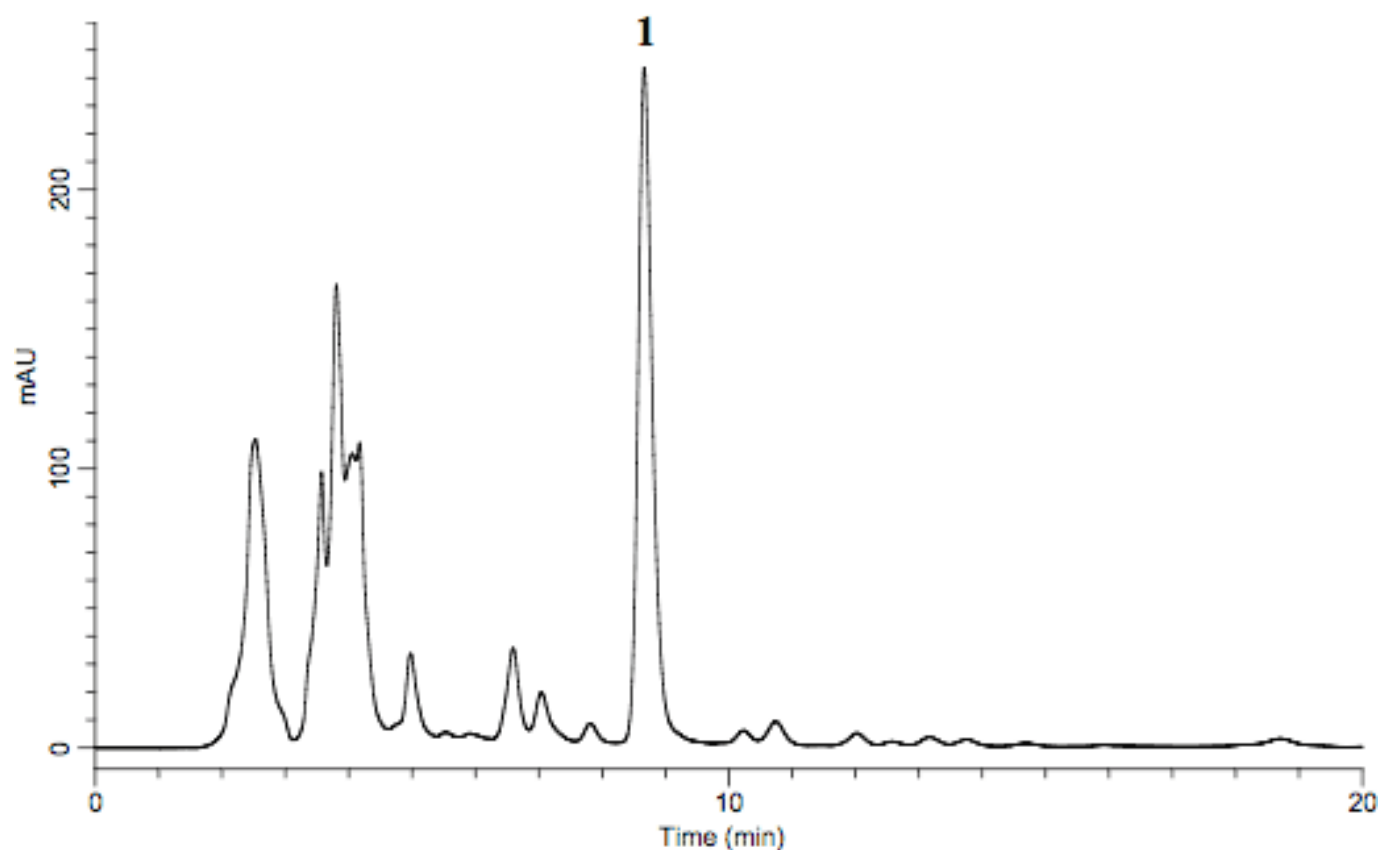


Analysis of Glycyrrhiza Extract (Under the Condition of Japanese Pharmacopoeia)

Data No. LA551-0698



System :GL-7400 system
Column :Inertsil ODS-SP (5 μ m, 150 \times 4.6 mm I.D.)
Column Cat. No.:
Eluent : A) CH₃CN
 B) 2.1 % CH₃COOH
 A/B = 40/60 ,v/v
Flow rate :0.6 mL/min
Col. Temp. :30 $^{\circ}$ C
Detection :PDA 254 nm (GL-7452A PDA detector)
Injection Vol. :20 μ L
Sample :Glycyrrhiza Extract (250.7 mg [before Extraction])

Solutes : 1. Glycyrrhetic acid