











Legend

- | | |
|--|---|
|  Pedestrian |  P1 Carpark |
|  Bus (One way) |  T Train Station |
|  Link Road PUDO (One way) |  B Public Bus Stop |
|  Oval PUDO (One way) |  Bike Racks |



Use active and public transport to get around!

Getting Around



Walk

Start walking today to achieve a goal of 10,000 steps per day!

Walk to key locations and attractions in the local area!



Journey Times

7 minutes to Normanhurst Station

14 minutes to Thornleigh Golf Centre and Basketball Sports Stadium

26 minutes to Thornleigh Woolworths



Drop-off/ Pick-up

- There are two dedicated pick-up and drop-off areas: the Link Road PUDO, accessed via Gate O1 Osborn Rd, and the Oval PUDO, accessed via Gate O4 Osborn Road



Parking

- Staff may park in P1, P2, P4 and P5
- Visitors may park in designated visitor spaces
- Year 12 students may park in P3



Bus

School bus and public bus services are available on Pennant Hills Rd, Milson Pde, Malsbury Rd and Denman Pde.

Route	School Bus Services
8028	Thornleigh to Barker College Junior School
8029	Thornleigh to Waitara PS via Westleigh
8109	Loreto Normanhurst to Turrumurra HS
9023	St Agatha's Parish PS to Turrumurra Station via Pennant Hills Station
9024	Normanhurst PS to Pennant Hills Station via Thornleigh & Waitara
9057	Wahroonga to Thornleigh Station via Westleigh

Route	Public Bus Services
587	Hornsby to Westleigh (Loop Service)
588	Hornsby to Normanhurst West (Loop Service)
589	Sydney Adventist Hospital to Hornsby
590	Hornsby to Pennant hills

Loreto Normanhurst Private Bus Services
Arcadia Route
Box Hill Route
Cherrybrook Metro Route
Drummoyne/Gladesville Route
Ermington Route
Lane Cove/North Ryde Route
Marsden Park Route
Mosman/North Shore Route

For information on Loreto Normanhurst private school bus routes and timetables, visit:

<https://www.loretonh.nsw.edu.au/pages/transport-enrolments>

For information on school and public bus services, visit:

<https://transportnsw.info/travel-info/ways-to-get-around/bus#/>



Train



Normanhurst Station
(7-minute walk)

Train Services

T9 Northern Line

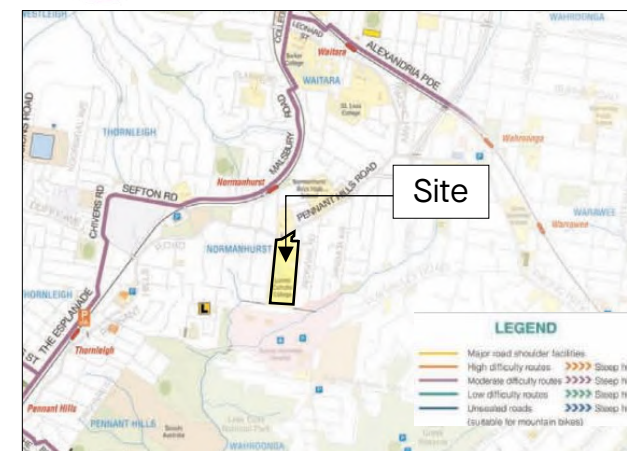
Journey Times

2 minutes to Hornsby
12 minutes to Epping
27 minutes to Rhodes

30 minutes to Chatswood
50 minutes to Central
55 minutes to Gosford



Cycle



Visit <https://www.hornsby.nsw.gov.au/lifestyle/sports-and-recreation/biking/road-cycling> to download the city's cycling route map.



Plan your trip using:

- Sydney's Trip Planning Tool at <https://transportnsw.info/>
- Google directions at <https://www.google.com/maps>
The mobile app, **Trip View**, which provides live train and bus timetables