










Legend

-  Pedestrian
-  P1 Carpark
-  Bus (One way)
-  T Train Station
-  Link Road PUDO (One way)
-  B Public Bus Stop
-  Oval PUDO (One way)



Use active and public transport to get around!

Getting Around



Walk

Start walking today to achieve a goal of 10,000 steps per day!

Walk to key locations and attractions in the local area!



Journey Times

- 7 minutes to Normanhurst Station
- 14 minutes to Thornleigh Golf Centre and Basketball Sports Stadium
- 26 minutes to Thornleigh Woolworths



Drop-off/ Pick-up

- There are two dedicated pick-up and drop-off areas: the Link Road PUDO, accessed via Gate O1 Osborn Rd, and the Oval PUDO, accessed via Gate O4 Osborn Road



Parking

- Staff may park in P1, P2, P4 and P5
- Visitors may park in designated visitor spaces in P2 or P3
- Year 12 students may park in P3



Bus

School bus and public bus services are available on Pennant Hills Rd, Milson Pde, Malsbury Rd and Denman Pde.

Route	School Bus Services
8028	Thornleigh to Barker College Junior School
8029	Thornleigh to Waitara PS via Westleigh
8109	Loreto Normanhurst to Turramurra HS
9023	St Agatha's Parish PS to Turramurra Station via Pennant Hills Station
9024	Normanhurst PS to Pennant Hills Station via Thornleigh & Waitara
9057	Wahroonga to Thornleigh Station via Westleigh

Route	Public Bus Services
587	Hornsby to Westleigh (Loop Service)
588	Hornsby to Normanhurst West (Loop Service)
589	Sydney Adventist Hospital to Hornsby
600	Hornsby to Parramatta

Loreto Normanhurst Private Bus Services
Lane Cove / North Ryde Route
Drummoyne/ Gladesville Route
Mosman / North Shore Route
The Hills District Route
Arcadia Route
Northern Beaches Route
Cherrybrook Shuttle Route

For information on Loreto Normanhurst private school bus routes and timetables, visit:

<https://www.loretonh.nsw.edu.au/pages/transport-enrolments>

For information on school and public bus services, visit:

<https://transportnsw.info/travel-info/ways-to-get-around/bus/>



Train



Normanhurst Station
(7-minute walk)

Train Services

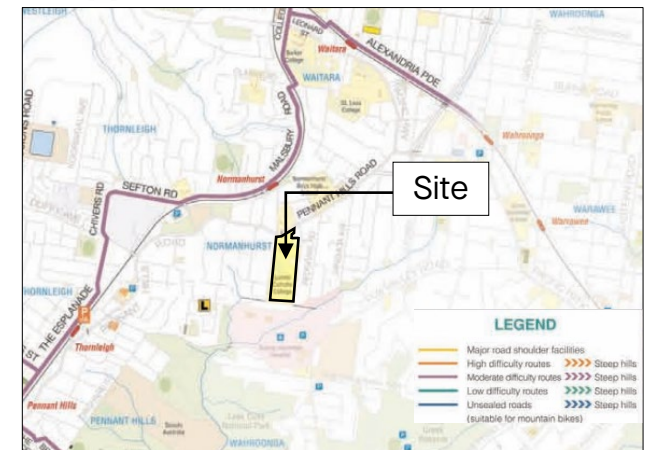
T9 Northern Line

Journey Times

2 minutes to Hornsby 30 minutes to Chatswood
12 minutes to Epping 50 minutes to Central
27 minutes to Rhodes 55 minutes to Gosford



Cycle



Visit <https://www.hornsby.nsw.gov.au/lifestyle/sports-and-recreation/biking/road-cycling> to download the city's cycling route map.



Plan your trip using:

- Sydney's Trip Planning Tool at <https://transportnsw.info/>
- Google directions at <http://maps.google.com.au/>
- The mobile app, **Trip View**, which provides live train and bus timetables