

2026

# EXCELLENCE IN DESIGN



AMERICAN BUILDINGS' EXCELLENCE IN DESIGN BUILDING OF THE YEAR: Rock Litzitz POD 1B Clair Global



**COVER:** Rock Lititz POD 1B Clair Global  
by E. H. Beiler Industrial Services, LLC



# EXCELLENCE IN DESIGN



## Where Custom Metal Buildings Redefine Possibility

From concept to completion, American's Excellence in Design Awards showcases our industry's best and celebrates the imagination, craftsmanship, and performance of custom metal building systems. Each winning project proves how steel can deliver striking aesthetics, smart functionality, and long-term value — across diverse uses from civic spaces and worship centers to advanced manufacturing, recreation, retail, and more. Recognized across multiple categories, these projects set the benchmark for what's possible when visionary owners, talented architects, and our Authorized Builders push beyond convention.

We invite you to explore what metal buildings can do for you.



To be considered for an Excellence in Design award, submit your projects to our annual program at [americanbuildings.com/eid](https://americanbuildings.com/eid).



## TABLE OF CONTENTS

Gold	04
Silver	06
Bronze	08
Agricultural	10
Auto Dealership	12
Church+Religious	14
Commercial	16
Community+Government	18
Manufacturing+Industrial	20
Office	22
Recreation	24
Retail	26
Special Projects	28
Transportation	30
Warehouse+Distribution	32
Honorable Mention	34

# GOLD





**Rock Lititz POD 1B Clair Global**  
Lititz, PA

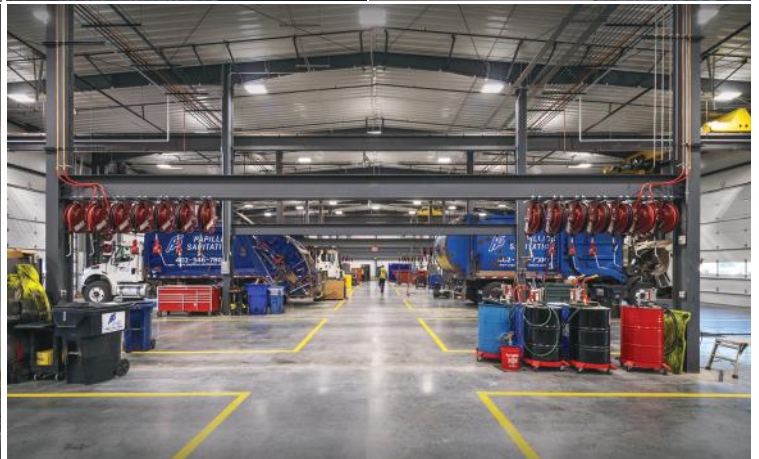
**BUILDER:** E. H. Beiler Industrial Services, LLC  
**GC:** Hensch General Contracting, LLC  
**ERECTOR:** E.H. Beiler Industrial Services, LLC  
**DESIGNER:** Brubaker Building Design & Köllab

Pod 1B Clair Global is situated within the 150-acre Rock Lititz campus, which houses a mix of production vendors, studio spaces, and support services for the live entertainment industry. Serving as the headquarters for Clair Global — a world leader in live sound technology, known for providing cutting-edge audio solutions for the music and live entertainment industries — this state-of-the-art facility stands at 44' in height and is engineered to accommodate solar panels, various hoist and point loads, rigging grids, storage platforms, balconies, and canopies. The building includes multiple mezzanines, offering three levels of functional space. Structurally, it features several three-story portal frames, with rafter depths ranging from three to five feet. The design of Pod 1B integrates specialized elements and support systems to address the intricate requirements of the two-sided facade located at the southwest corner of the building. The exterior walls are finished with American's Reverse-R Panel in a custom black, matching other pods across the Rock Lititz production campus. American's Standing Seam 360 roof system in Galvalume completes the building envelope.



# SILVER





**Papillion Sanitation**  
Bellevue, NE

**BUILDER:** K.C. Petersen Construction Co.  
**GC:** Leuder Construction  
**ERECTOR:** Moen Steel Erection  
**ARCHITECT:** Slate Architecture



Spanning more than 30,000 sf, the Papillion Sanitation headquarters in Bellevue, Nebraska is a thoughtfully designed facility that balances performance and modern aesthetics. Energy-efficient building systems and materials were incorporated throughout the facility, aligning with Papillion Sanitation's commitment to environmental responsibility. The exterior architecture is defined by insulated metal panels in the Mesa profile, finished in a refined palette of Slate Gray and white. These panels create a clean, contemporary visual presence that delivers superior thermal performance and long-term durability. Capping the structure is a Standing Seam 360 roof system in Galvalume, selected for its longevity, weather resistance and low-maintenance qualities. The main entryway is intentionally designed to make a strong first impression. Bold blue exposed structural framing directly references Papillion Sanitation's brand identity, and a glass curtain wall spans the entry façade, allowing abundant natural light to pour into the interior. Inside, an open layout maximizes daylight throughout, promoting productivity, comfort, and collaboration. A partial mezzanine, constructed using an Ecospan Composite Floor System, adds valuable second-floor workspace and private offices while maintaining visual connectivity to the spaces below. The operational core of the facility is its specialized truck repair shop, equipped with a 5-ton overhead crane and two 10-ton overhead cranes, enabling efficient handling of large vehicles and components, while multiple overhead doors provide seamless access for trucks and equipment.

# BRONZE





**Martin County Event Center**  
Stanton, TX

**BUILDER:** Butler-Cohen, LLC  
**GC:** Butler-Cohen Design + Build  
**ERECTOR:** Dane Construction  
**ARCHITECT:** DRG Architects

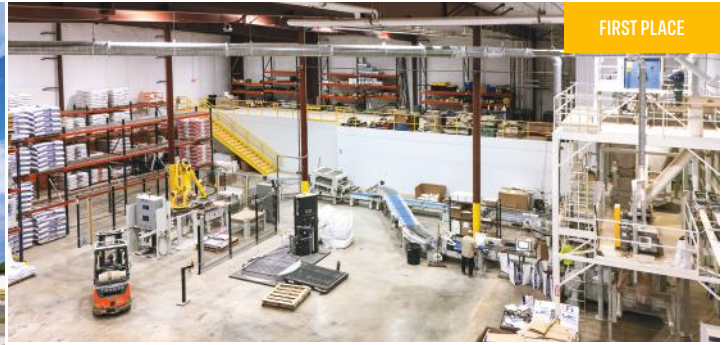


The Martin County Event Center is a transformational 85-acre municipal development designed to serve residents and visitors by offering a wide range of community, recreational, and agricultural facilities. As part of this extensive complex, the major components include an approximately 112,000 sf climate controlled indoor rodeo arena, a 174,000 sf covered outdoor arena with more than 300 horse stalls, and a 9,018 sf warehouse. The project integrates competition and practice rodeo arenas, a community center and banquet hall, an exhibition hall/marketplace, a little league baseball and softball complex, splash pads, and multiple playgrounds into one cohesive, centralized destination. The buildings feature a combination of Metl-Span's insulated metal panels in the Santa Fe profile in Desert Sand and American's Reverse R-Panels in Surrey Beige, installed horizontally. The exterior is complemented by American's Loc Seam 360 roof system in Regal White, Terra Cotta, and Galvalume. Architectural enhancements such as masonry accents, cupolas, and a welcoming entrance canopy further elevate the aesthetic. As an addition to an existing American building, the project required precise coordination of multiple structures — each with distinct foundations, utilities, and elevations — to ensure seamless integration. The development incorporates long term durability, efficient structural systems, and community-focused green spaces, resulting in a modern, multifunctional complex that enhances regional engagement and supports Martin County's commitment to recreation, agriculture, and community connection.



1 United Cooperative - Waupun Campus *Waupun, WI* | BUILDER: Keller, Inc. | GC: Keller, Inc. | ERECTOR: Keller, Inc. | ARCHITECT: Keller, Inc.

# AGRICULTURAL



2 North Star Implement El Paso, IL | BUILDER: Bruns Building & Development | GC: Bruns Building & Development | ERECTOR: Bruns Building & Development | ARCHITECT: Bruns Building & Development



1 Bell Ford Arlington, WI | BUILDER: Keller, Inc. | GC: Keller, Inc. | ERECTOR: Keller, Inc. | ARCHITECT: Keller, Inc.

# AUTO DEALERSHIP

SECOND PLACE



2 Boulevard Ford Millsboro, DE | BUILDER: Bob Breeding General Contractors, LLC | GC: J.O.B. Construction | ERECTOR: Bob Breeding General Contractors, LLC | ARCHITECT: AWB Engineers/Architects

THIRD PLACE



3 Mercedes-Benz of Fort Wayne Fort Wayne, IN | BUILDER: Witwer Construction, Inc. | GC: Witwer Construction, Inc. | ERECTOR: Moake Park Group | ARCHITECT: Witwer Construction, Inc.



1 Hutto Bible Church *Hutto, TX* | BUILDER: Aday & Associates | GC: Aday & Associates | ARCHITECT: Mode Design Company

# CHURCH+ RELIGIOUS

SECOND PLACE



2 **Community House Church** Toledo, OH | **BUILDER:** Romanko Building Company | **GC:** Romanko Building Company | **ERECTOR:** Walcher & Fox, Inc. | **ARCHITECT:** Coger/Shambarger Architects

THIRD PLACE



3 **Summit Church** Rogersville, MO | **BUILDER:** Williams Construction, Inc. | **GC:** Storee Construction | **ERECTOR:** Burk Erectors, Inc. | **ARCHITECT:** R.E. Werner



1 Inland Truck Parts & Service Center Shreveport, LA | BUILDER: Hand Construction, LLC | GC: Hand Construction, LLC | ERECTOR: Menco Constructors, Inc. | ARCHITECT: Michael F. Pollard

# COMMERCIAL

SECOND PLACE



2 TR Petroleum Saskatoon, SK | BUILDER: Ledcor Design & Build Ltd. | GC: Ledcor Design & Build Ltd. | ERECTOR: Stratus Steel Erectors, Inc. | ARCHITECT: KSA Group Architecture

THIRD PLACE



3 1001 Moba Peachtree City, GA | BUILDER: Southtree Commercial Construction, LLC



1 Martin County Event Center Stanton, TX | BUILDER: Butler-Cohen, LLC | GC: Butler-Cohen Design + Build | ERECTOR: Dane Construction | ARCHITECT: DRG Architects

# COMMUNITY+ GOVERNMENT

SECOND PLACE

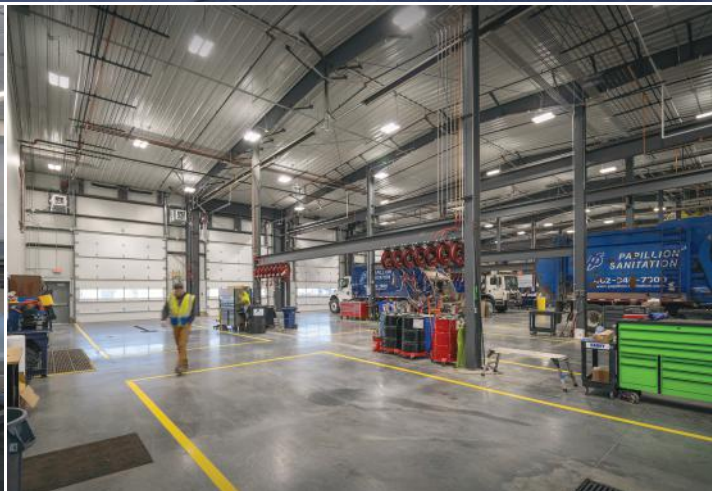


2 AHCCCS Transitional Shelter Phoenix, AZ | BUILDER: Colton Constructors, Inc. | GC: Colton Constructors, Inc. | ERECTOR: Eagle Erectors | ARCHITECT: LEA Architects, LLC

THIRD PLACE



3 Carroll County Sheriff's Office & Jail Delphi, IN | BUILDER: Tri-Tech Construction Services, Inc.



1 Papillon Sanitation *Bellevue, NE* | BUILDER: K.C. Petersen Construction Co. | GC: Leuder Construction | ERECTOR: Moen Steel Erection | ARCHITECT: Slate Architecture

# MANUFACTURING+ INDUSTRIAL

SECOND PLACE



2 Midmark Corporation Versailles, OH | BUILDER: Bruns Building & Development | GC: Bruns Building & Development | ERECTOR: Bruns Building & Development | ARCHITECT: Bruns Building & Development

THIRD PLACE



3 Therma-Tron-X, Inc Institute, WI | BUILDER: Keller, Inc. | GC: Keller, Inc. | ERECTOR: Keller, Inc. | ARCHITECT: Keller, Inc.



1 ABC Office Headquarters *Madison, WI* | BUILDER: Advanced Building Corp. | GC: Advanced Building Corp. | ERECTOR: Advanced Building Corp. | ARCHITECT: Advanced Building Corp.

# OFFICE

SECOND PLACE



2 **Kinninger Custom Fabrications** *New Bremen, OH* | **BUILDER:** Bruns Building & Development | **GC:** Bruns Building & Development | **ERECTOR:** Bruns Building & Development | **ARCHITECT:** Bruns Building & Development

THIRD PLACE



3 **EMR Office** *Freeport, FL* | **BUILDER:** EMR, Inc. | **GC:** EMR, Inc. | **ERECTOR:** Cheyenne Steel Erectors | **ARCHITECT:** The Jenkins Group



1 WSFS bank Sportsplex (Philadelphia Union) Chester, PA | BUILDER: Building Concepts of America | GC: BPGS Construction | ERECTOR: Building Concepts of America | ARCHITECT: OSPO RTS

# RECREATION

SECOND PLACE



2 **Frann's Fieldhouse** *Tiffin, OH* | **BUILDER:** Marker Construction | **GC:** Marker Construction | **ERECTOR:** Steel Worx | **ARCHITECT:** Design Collaborative

THIRD PLACE



3 **Kettlestone Central Gyms** *Waukegan, IA* | **BUILDER:** Mid-States Millwright & Builders | **GC:** Jensen Group | **ERECTOR:** Big Johnson Construction / Mid-States Millwright & Builders | **ARCHITECT:** Jensen Group



1 Esh's Grocery Windsor, CO | BUILDER: Traverse Builders, LLC | GC: Traverse General Contractors | ERECTOR: Traverse Metal Buildings | ARCHITECT: Asher Architects + Engineers

# RETAIL

SECOND PLACE



2 Westgate Place La Porte, IN | BUILDER: HGR Sales, Inc. | GC: HGR Group General Contracting | ERECTOR: HGR Group General Contracting | ARCHITECT: HGR Group

THIRD PLACE



3 Echo Electric Mitchell, SD | BUILDER: WS Construction Management, LLC | GC: WS Construction Management, LLC | ERECTOR: WS Construction Management, LLC | ARCHITECT: Puetz Design + Build



1 Rock Litz POD 1B Clair Global *Litz, PA* | BUILDER: E. H. Beiler Industrial Services, LLC | GC: Hensch General Contracting, LLC | ERECTOR: E. H. Beiler Industrial Services, LLC | DESIGNER: Brubaker Building Design & Köllab

# SPECIAL PROJECTS

SECOND PLACE



2 Lime Rock Park Lakeville, CT | BUILDER: Claris Construction | GC: Claris Design-Build | ERECTOR: A SQUARED | ARCHITECT: Claris Design-Build

THIRD PLACE



3 International Disaster Emergency Service Noblesville, IN | BUILDER: T&W Corporation | GC: T&W Corporation | ERECTOR: L&L Erectors | ARCHITECT: Site Architecture



1 **Wicomico Regional Airport** Salisbury, MD | **BUILDER:** Bob Breeding General Contractors, LLC | **GC:** Keller Brothers, Inc. | **ERECTOR:** Bob Breeding General Contractors, LLC | **ARCHITECT:** Fisher Architecture

# TRANSPORTATION

SECOND PLACE



2 Killian - Prime Hangar Springfield, MO | BUILDER: Williams Construction, Inc. | GC: Killian Construction | ERECTOR: WilShar Steel, Inc. | ARCHITECT: Buxton Kubik Dodd Design Collective

THIRD PLACE



3 Fulton County Highway Department Maintenance Facility Canton, IL | BUILDER: Peoria Metro Construction | GC: Peoria Metro Construction | ERECTOR: Area Erectors, Inc. | ARCHITECT: Melotte, Morse, Leonatti, Parker, Ltd.



**1** Pitt Plastics Warehouse *Pittsburg, KS* | **BUILDER:** Koehn Construction Services | **GC:** Koehn Construction Services | **ERECTOR:** Bull Building Erectors LLC | **ARCHITECT:** BNB Design

# WAREHOUSE+ DISTRIBUTION

SECOND PLACE



2 **Feralloy Building Addition** *Portage, IN* | **BUILDER:** Hasse Construction Company, Inc. | **GC:** Hasse Construction Company, Inc. | **ERECTOR:** Hampton Iron Works | **ARCHITECT:** Enspect, Inc.

THIRD PLACE



3 **Louis Hogarth Warehouse** *Eau Claire, WI* | **BUILDER:** Bauman Construction, LLC | **GC:** Bauman Construction, LLC | **ERECTOR:** Bauman Construction, LLC | **ARCHITECT:** Bauman Construction, LLC

## AUTO DEALERSHIP



**TC Customs** Pell City, AL  
BUILDER: Goodgame Company, Inc. | GC: Goodgame Company, Inc.  
ARCHITECT: Goodgame Company, Inc. Design Build Team

## AUTO DEALERSHIP



**L.B. Smith Ford Elite Pro Commercial Service Center** Camp Hill, PA  
BUILDER: E. H. Beiler Industrial Services, LLC | GC: JEM Group, LLC  
ERECTOR: E. H. Beiler Industrial Services, LLC | ARCHITECT: SGS Architects-Engineers, Inc.

## CHURCH+RELIGIOUS



**Woodbridge Seventh Day Adventist Church** Manassas, VA  
BUILDER: Whitener & Jackson, Inc. | GC: Whitener & Jackson, Inc.  
ERECTOR: MTD Erectors, Inc. | ARCHITECT: Helbing Lipp Recny Architects

## COMMERCIAL



**Croell Batch Plant** Billings, MT  
BUILDER: Ainsworth-Benning Construction, Inc. | GC: Ainsworth-Benning Construction, Inc.  
ERECTOR: DDV, LLC

## COMMERCIAL



**Silva HQ** Thornton, CO  
BUILDER: Denver Developers, LLC | GC: Owner  
ERECTOR: Denver Developers, LLC | ARCHITECT: ACME

## COMMERCIAL



**U-Haul U-Box Warehouse** Murray, UT  
BUILDER: Petra, Inc. | GC: Petra, Inc.  
ERECTOR: Forge Building Company | ARCHITECT: Hillside Architecture

# HONORABLE MENTION

## COMMERCIAL



**Misty Harbour Seafood** *Saint John, NB*  
**BUILDER:** Prospect Contractors, Ltd. | **GC:** Coastal Enterprises  
**ERECTOR:** Prospect Building Contractors | **ARCHITECT:** Smyth Design Inc, Donald Sterritt

## COMMERCIAL



**Cowboy USA** *Moncks Corner, SC*  
**BUILDER:** Robbins Construction Group, LLC | **GC:** Robbins Construction Group, LLC  
**ERECTOR:** Cobb Industrial | **ARCHITECT:** Robert Johnson Architects

## COMMERCIAL



**Advanced Automotive** *Gainesville, VA*  
**BUILDER:** Total Construction Services, Inc. | **GC:** Olde Red General Contractors  
**ERECTOR:** Total Construction Services, Inc.

## COMMERCIAL



**Tru-Co General Contractor, Inc. Office & Shop** *New Bern, NC*  
**BUILDER:** Tru-Co General Contractor, Inc. | **GC:** Tru-Co General Contractor, Inc.  
**ERECTOR:** Edwards Erectors, LLC

## COMMUNITY+GOVERNMENT



**Johnstown Wastewater Treatment Plant MBR Building** *Johnstown, CO*  
**BUILDER:** Baker Builders, LLC | **GC:** Moltz Construction  
**ERECTOR:** Baker Steel Erectors | **ARCHITECT:** Aqua Engineering

## COMMUNITY+GOVERNMENT



**Blue River Wastewater Treatment Plant** *Kansas City, MO*  
**BUILDER:** Cannon Building Systems | **GC:** Goodwin Brothers  
**ERECTOR:** Lane Ironworks | **ARCHITECT:** Black & Veatch

## COMMUNITY+GOVERNMENT



**Dos Palos Water Treatment Plant** *Dos Palos, CA*  
BUILDER: Gonzales Construction | GC: W.M. Lyles  
ERECTOR: All American Ironworks | ARCHITECT: AECOM

## COMMUNITY+GOVERNMENT



**INDOT Mishawaka Unit and Salt Building** *South Bend, IN*  
BUILDER: Hasse Construction Company, Inc. | GC: Hasse Construction Company, Inc.  
ERECTOR: SM Industries | ARCHITECT: Fosse & Associates

## COMMUNITY+GOVERNMENT



**Dedham-Westwood Water District Storage Facility** *Dedham, MA*  
BUILDER: International Ventures, LLC | GC: Seaver Construction, Corp  
ERECTOR: International Ventures, LLC | ARCHITECT: RGB Architects

## COMMUNITY+GOVERNMENT



**IHC Ambulance Bay** *Burley, ID*  
BUILDER: Koyle's Classic Construction, LLC | GC: Koyle's Classic Construction, LLC  
ERECTOR: Koyle's Classic Construction, LLC

## COMMUNITY+GOVERNMENT



**Manatee County Sheriff's Office Fleet Maintenance Building** *Palmetto, FL*  
BUILDER: Mark Construction Company

## COMMUNITY+GOVERNMENT



**Illini Central Community Unit School District 189 Addition & Renovation** *Mason City, IL*  
BUILDER: Peoria Metro Construction | GC: Peoria Metro Construction  
ERECTOR: Area Erectors, Inc. | ARCHITECT: PCM + Design Architects

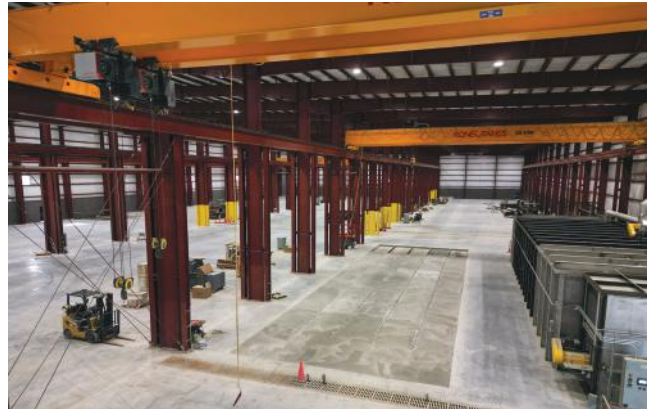
# HONORABLE MENTION

## COMMUNITY+GOVERNMENT



**MCC Automotive Institute** *Lee's Summit, MO*  
**BUILDER:** Weigel Construction, Inc. | **GC:** McCownGordon Construction  
**ERECTOR:** Weigel Construction, Inc. | **ARCHITECT:** DLR Group

## MANUFACTURING+INDUSTRIAL



**D. Martin Enterprises** *Michigan City, IN*  
**BUILDER:** Chester, Inc. | **GC:** Chester, Inc.  
**ERECTOR:** Henry Gurtzweiler Inc. | **ARCHITECT:** Chester, Inc.

## MANUFACTURING+INDUSTRIAL



**Nucor Towers & Structures** *Decatur, AL*  
**BUILDER:** Fite Building Company, Inc. | **GC:** Fite Building Company, Inc.  
**ERECTOR:** Fite Building Company, Inc. | **ARCHITECT:** DIA

## MANUFACTURING+INDUSTRIAL



**Allied Minerals Phase II** *Pell City, AL*  
**BUILDER:** Goodgame Company, Inc. | **GC:** Goodgame Company, Inc.  
**ARCHITECT:** Goodgame Company, Inc. Design Build Team

## MANUFACTURING+INDUSTRIAL



**Douglas Manufacturing** *Pell City, AL*  
**BUILDER:** Goodgame Company, Inc. | **GC:** Goodgame Company, Inc.  
**ARCHITECT:** Goodgame Company, Inc. Design Build Team

## MANUFACTURING+INDUSTRIAL



**Ford Meter Box** *Pell City, AL*  
**BUILDER:** Goodgame Company, Inc. | **GC:** Goodgame Company, Inc.  
**ARCHITECT:** Goodgame Company, Inc. Design Build Team

## MANUFACTURING+INDUSTRIAL



**Vidimos Building Addition** *East Chicago, IN*  
**BUILDER:** Hasse Construction Company, Inc. | **GC:** Hasse Construction Company, Inc.  
**ERECTOR:** SM Industries | **ARCHITECT:** CSK Architects

## MANUFACTURING+INDUSTRIAL



**Detroit Recycling Facility** *Detroit, MI*  
**BUILDER:** CMA Design Services | **GC:** RRT Design & Construction  
**ERECTOR:** Woodruff Contracting | **ARCHITECT:** RRT Design & Construction

## MANUFACTURING+INDUSTRIAL



**King Steel** *Winder, GA*  
**BUILDER:** Southtree Commercial Construction, LLC

## MANUFACTURING+INDUSTRIAL



**Spangler Candy Company - Sugar Shack** *Bryan, OH*  
**BUILDER:** Thiel Construction Company, Inc. | **GC:** Thiel Construction Company, Inc.  
**ERECTOR:** Thiel Construction Company, Inc. | **ARCHITECT:** Bell Engineering

## MANUFACTURING+INDUSTRIAL



**Merrill Steel 2025 Additions** *Springfield, MO*  
**BUILDER:** Williams Construction, Inc. | **GC:** Williams Construction, Inc.  
**ARCHITECT:** Burk Erectors | **ARCHITECT:** Buxton Kubik Dodd Design Collective

## MANUFACTURING+INDUSTRIAL



**Trinity Stainless** *Rogersville, MO*  
**BUILDER:** Williams Construction, Inc. | **GC:** Storee Construction  
**ERECTOR:** Burk Erectors | **ARCHITECT:** R.E. Werner

# HONORABLE MENTION

## RECREATION



**Greater Heights Climbing** *Fitchburg, WI*  
**BUILDER:** Advanced Building Corp. | **GC:** Advanced Building Corp.

## RECREATION



**Boys & Girls Club of Moody County Addition** *Flandreau, SD*  
**BUILDER:** Mills Construction, Inc. | **GC:** Mills Construction, Inc.  
**ERECTOR:** Mills Construction, Inc. | **ARCHITECT:** DesignARC

## RECREATION



**Bicentennial Park** *Franklin, TN*  
**BUILDER:** Sain Construction Company | **GC:** Sain Construction Company  
**ERECTOR:** McMahan Construction, Inc. | **ARCHITECT:** Barge Design Solutions

## RECREATION



**Alabama Gulf Coast Sports Center** *Gulf Shores, AL*  
**BUILDER:** Southern Metal Buildings & Barndominiums LLC | **GC:** McCurley & Associates  
**ARCHITECT:** Cherry McNab Architects

## SPECIAL PROJECTS



**Sievert Barndominium** *Reno, NV*  
**BUILDER:** H & H Specialty Supply, LLC | **GC:** Hammond Homes & Construction, LLC  
**ERECTOR:** Hammond Homes & Construction, LLC | **ARCHITECT:** Par 3 Design Group

## SPECIAL PROJECTS



**Barndominium (Patrick Kiley)** *Newport, NC*  
**BUILDER:** Tru-Co General Contractor, Inc. | **GC:** Tru-Co General Contractor, Inc.  
**ERECTOR:** Edwards Erectors, LLC



# AMERICAN BUILDINGS

a **NUCOR** brand

[americanbuildings.com](http://americanbuildings.com)

