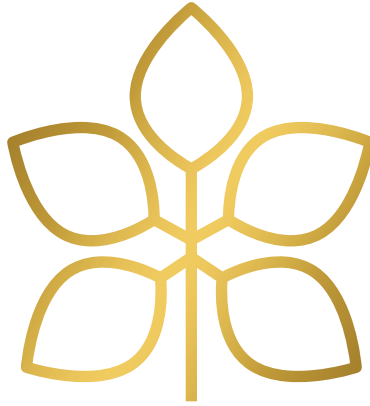


what

nut

chic



EnCLAVE

AT WALNUT BOULEVARD

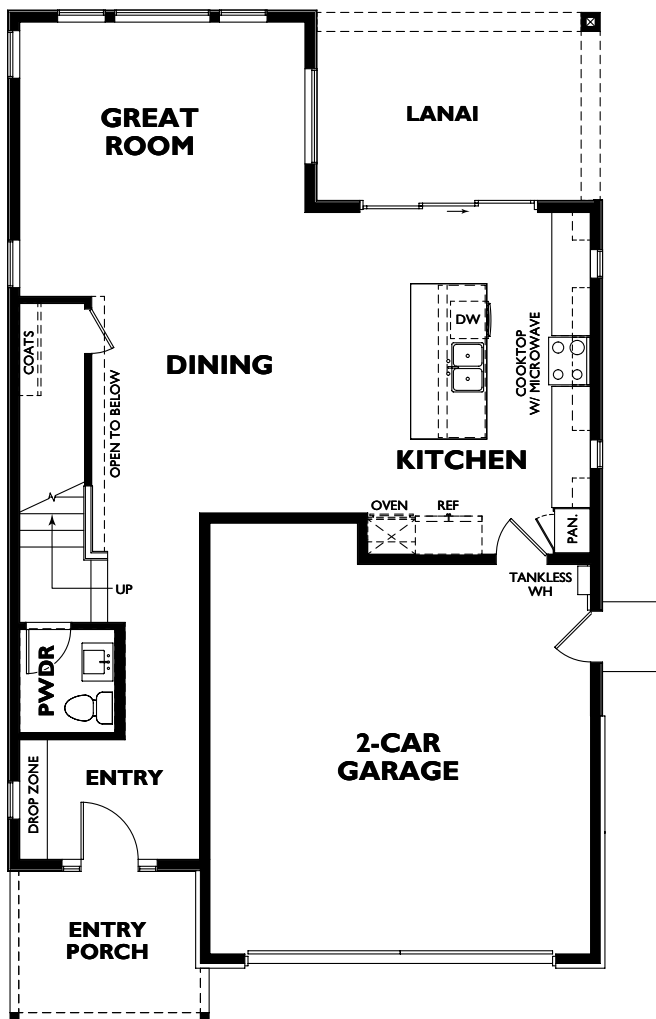
Distinctly its own destination, Walnut Creek offers the best of The Bay with dining, entertainment and luxury shopping all in one place. Here you can spend the afternoon visiting new exhibits at the Leshner Center for the Arts, shopping the latest releases in the specialty boutiques of Broadway Plaza, or tasting seasonal brews and locally sourced bites in an elegant tap room.



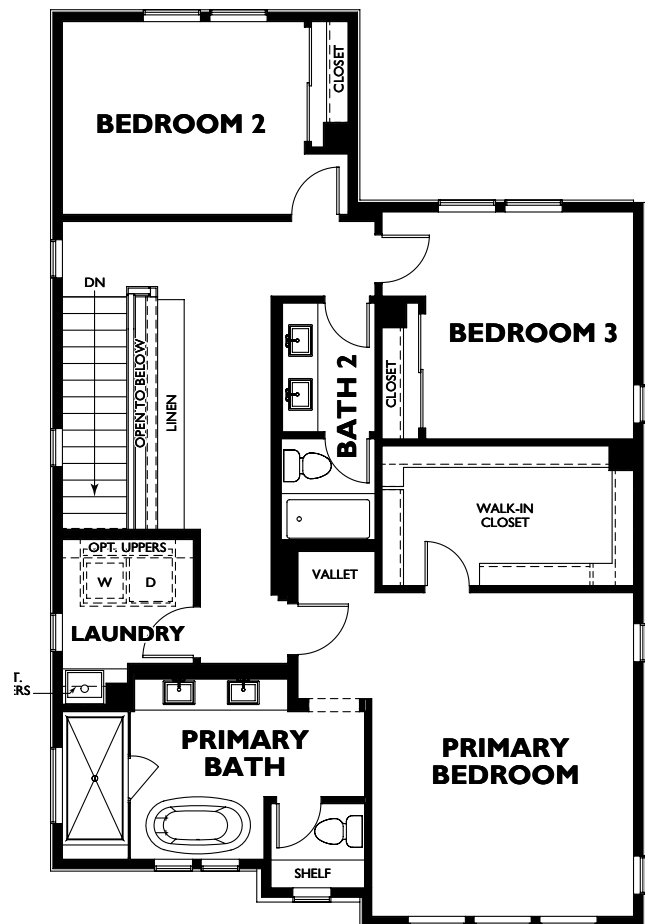
The Cypress



2 floors • 3 bedrooms • 2.5 baths • 2-car garage • 2,066 – 2,096 sq. ft.



1st Floor



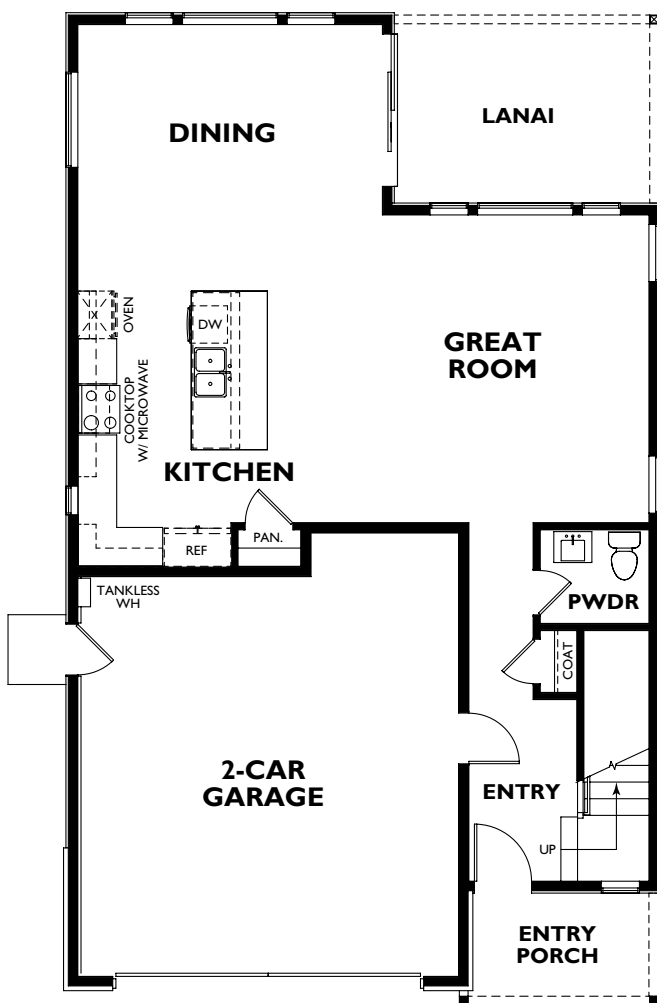
2nd Floor



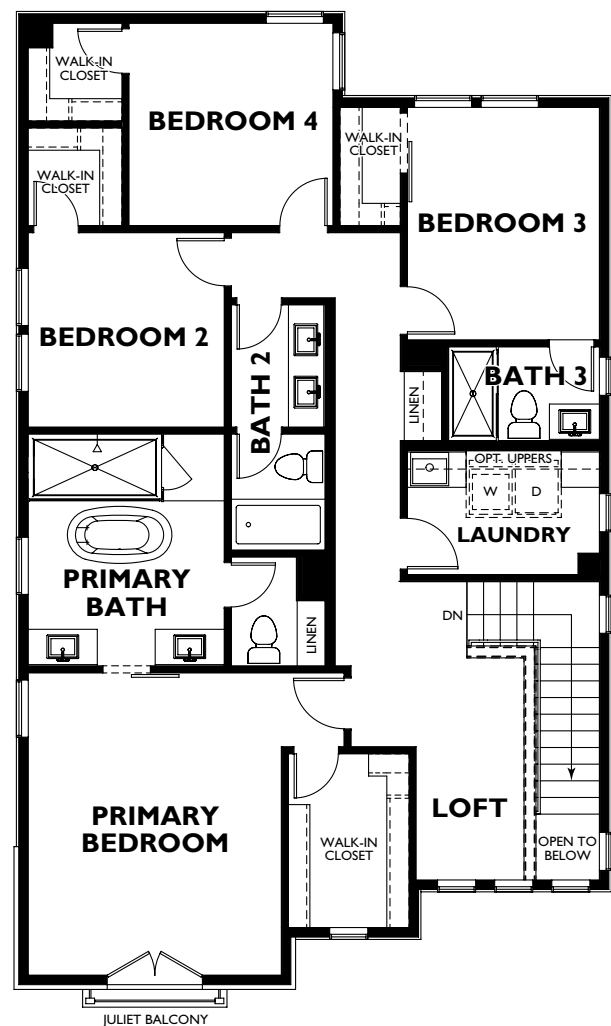
The Oak



2 floors • 4 bedrooms • 3.5 baths • 2-car garage • 2,280 - 2,309 sq. ft.



1st Floor



2nd Floor



Explore Walnut Creek

This sophisticated East Bay destination offers rich cultural and lifestyle amenities just blocks away. Contemporary and exciting—The Enclave at Walnut Boulevard can be your Haven, for all of life's new beginnings.





Features + Finishes

Exterior of Your Home

- Complete Andersen Window® and patio door package
- Sherwin-Williams® designer paint
- Certainteed Landmark® Series compositional shingle roof and metal roof per plan
- Exterior stucco finish with concrete based siding and stone veneer per plan
- Therma-Tru® entry door with keyless entry Kwikset® handset
- Wired Nest® doorbell
- Modern glass inset garage door to complement elevation
- LiftMaster® belt drive garage opener with battery backup and wifi capability
- Garages equipped with pre-wired 220V electric vehicle charging circuit
- Solar panels installed and fully owned by homeowner per title 24 requirements
- Post tension slab foundation
- Front yard landscaping

Throughout Your Home

- Full Kohler® faucet package
- Kwikset® lever interior door handles
- 12" by 24" porcelain tile floor at entry, kitchen, laundry, and all baths
- Square drywall corner bead with smooth drywall finish
- 5 ½ inch baseboards
- 5-panel modern interior doors
- Stain grade handrail and balusters at stairs
- LED energy-efficient lighting
- Two-Tone Sherwin-Williams® designer paint
- Shaker panel cabinets with soft-close features
- Standard LED can lights at all bedrooms and great room
- Paddle fan pre-wire at great room and primary bedroom

Behind the Walls

- Universal outlet wiring in all bedrooms and great room with RG6 and CAT6
- 2 WAP (wireless access point) pre-wires at designated location
- Smoke detectors and carbon monoxide detectors
- Tankless domestic hot water system with integrated recirculating system
- 2x6 exterior wall construction for added insulation
- Quickflash® at exterior plumbing and electrical penetrations
- 14" Open web floor truss construction with 1 1/8" subfloor.

In the Kitchen

- Bosch® Appliance Package, with optional refrigerator
- InSinkErator® 1/2 horsepower disposal with convenient deck mounted on/off button
- Kohler® stainless steel apron-front under mount sink
- Kohler® Faucet with pull down spray
- Quartz countertops with 1 1/2" miter edge with standard 6" backsplash and full splash behind the cooktop

Options & Upgrades

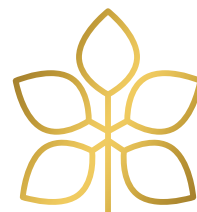
Our Design Studio offers an array of personalization options from cabinets to quartz countertops, and hardwood floors to appliance packages. You will have an opportunity to meet with our design team and personalize your home.

Secondary Bedrooms & Baths

- Kohler® bathroom plumbing fixtures.
- Kohler® undermount sinks.
- Kohler® toilets in all bathrooms
- Marble stone countertops and tub/shower surrounds in secondary bathrooms
- Closets fitted with shelf stack and chrome shelf and pole

Primary Bedrooms & Baths

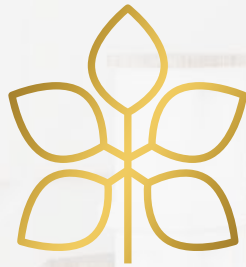
- Spacious primary suites with large walk-in closets
- Spa-inspired bathroom
- Kohler® elegant freestanding tub
- Kohler® widespread bathroom fixtures
- Kohler® undermount white sinks
- Kohler Elongated® toilet
- Daltile® designer large format tile in shower surround with coordinating tile shower pan
- Frameless heavy glass shower enclosures
- Quartz vanities with 1 1/2" miter edge



At Haven, we care about every home we build. We're proud of every working relationship we've formed; we pay attention to the smallest details. As a result, our homes are built with the kind of integrity you won't find anywhere else. With different cultures and life experiences, the Haven team brings a rich diversity as unique as the Bay Area itself. Along with a rock-solid work ethic and valuable experience, these building professionals are thorough, resilient and obsessed with quality. In other words, they're the best in the business, building the best homes in the Bay Area.







enclave

AT WALNUT BOULEVARD

2670 Walnut Boulevard Walnut Creek, CA 94597 | havenca.com



This is not an offer of real estate for sale, nor a solicitation of an offer to buy, to residents of any state or province in which registration and other legal requirements have not been fulfilled. All plans, amenities and features are subject to change at any time. © 2024 Haven Development. 02/25/2025