



Learning Partners  
academy trust

# 2024/25 CPLD Programme

SEPTEMBER 2024



# Welcome!

Welcome to our Continuous Professional & Leadership Development (CPLD) brochure, tailored specifically for Learning Partners Academy Trust & Learning Partners Church Academy Trust.

We are dedicated to fostering a culture of excellence and lifelong learning within our community. This brochure is designed to provide you with a comprehensive overview of the diverse CPLD opportunities available to support your professional growth and development.

Together, we strive to create an inspiring and supportive environment. We look forward to working with you.

Kathryn, Andrew & Helen  
Directors of Education



## Contents - Primary Trust Wide Inset Overview

| DATE      | FOCUS  |      | LOCATION     | PAGE      |
|-----------|--|------|--------------|-----------|
| 02 SEP 24 | Safeguarding                                     | P, S | SCHOOL BASED | <u>14</u> |
| 03 SEP 24 | New to Role - SEND Focus & Introduction to CPOMS | P, S | FACE TO FACE | <u>15</u> |
| 25 OCT 24 | Networking Opportunity*                          | P    | FACE TO FACE | SEE BELOW |
| 29 JAN 25 | SEND Focus                                       | P,S  | SCHOOL BASED | <u>32</u> |
| 30 JUN 25 | Mr P ICT   | P    | SCHOOL BASED | <u>33</u> |

\*NETWORKING OPPORTUNITES IN THE FOLLOWING PRIMARY SCHOOL SUBJECT AREAS:-

|               |           |  |                                   |           |
|---------------|-----------|--|-----------------------------------|-----------|
| Art & History | <u>17</u> |  | Outdoor Learning & Forest Leaders | <u>24</u> |
| Computing     | <u>22</u> |  | PE                                | <u>25</u> |
| EYFS          | <u>18</u> |  | PSHE                              | <u>26</u> |
| Maths         | <u>21</u> |  | RE                                | <u>27</u> |
| MFL           | <u>23</u> |  | Science                           | <u>28</u> |
| Music         | <u>16</u> |  | Writing                           | <u>30</u> |

## Contents - Secondary Trust Wide Inset Overview

| DATE      | FOCUS  |      | LOCATION     | PAGE      |
|-----------|--|------|--------------|-----------|
| 02 SEP 24 | Safeguarding                                     | P, S | SCHOOL BASED | <u>14</u> |
| 03 SEP 24 | New to Role - SEND Focus & Introduction to CPOMS | P, S | FACE TO FACE | <u>15</u> |
| 25 OCT 24 | Spotlight on SEND                                | S    | SCHOOL BASED | <u>29</u> |
| 06 JAN 25 | Spotlight on Exam Preparation                    | S    | SCHOOL BASED | <u>31</u> |
| 29 JAN 25 | Send Focus                                       | P,S  | SCHOOL BASED | <u>32</u> |
| 30 JUN 25 | Curriculum Collaboration                         | S    | TBC          | <u>34</u> |



# Contents - Courses & Networks

| DATE | PROGRAMME |  |  | PAGE |
|------|-----------|--|--|------|
|------|-----------|--|--|------|

## AUTUMN TERM

|           |  |      |         |                    |
|-----------|--|------|---------|--------------------|
| 23 SEP 24 | Effective Leadership for Aspiring Leaders & Established Subject Leaders - Interpersonal Skills | P, S | COURSE  | <a href="#">36</a> |
| 30 SEP 24 | ECT Network  | P    | NETWORK | <a href="#">35</a> |
| 03 OCT 24 | Primary Phase Leaders Network  | P    | NETWORK | <a href="#">38</a> |
| 03 OCT 24 | Middle Leader Professional Learning & Development  | S    | NETWORK | <a href="#">39</a> |
| 03 OCT 24 | Teaching & Learning Leaders Forum  | S    | NETWORK | <a href="#">40</a> |
| 04 OCT 24 | Enhancing Writing in the Primary School - Immersion  | P    | COURSE  | <a href="#">41</a> |
| 07 OCT 24 | Subject Leadership : the Essentials Part 1   | P,S  | COURSE  | <a href="#">44</a> |
| 08 OCT 24 | Music Network  | P    | NETWORK | <a href="#">16</a> |
| 10 OCT 24 | Deputy Head & Assistant Head Group   | P    | NETWORK | <a href="#">43</a> |
| 10 OCT 24 | EYFS Network   | P    | NETWORK | <a href="#">46</a> |
| 15 OCT 24 | Assessment Network   | P    | NETWORK | <a href="#">47</a> |

**Key:-**

P -

**Primary**

S -

**Secondary**

# Contents - Courses & Networks

| DATE | PROGRAMME |  |  | PAGE |
|------|-----------|--|--|------|
|------|-----------|--|--|------|

## AUTUMN TERM

|           |  |      |         |           |
|-----------|--|------|---------|-----------|
| 15 OCT 24 | Deputy Heads Professional Learning & Leadership Group                                | S    | NETWORK | <u>48</u> |
| 15 OCT 24 | Geography Network  | P    | NETWORK | <u>49</u> |
| 17 OCT 24 | EAL Network  | P, S | NETWORK | <u>50</u> |
| 23 OCT 24 | Supporting Students with ADHD  | P, S | COURSE  | <u>51</u> |
| 07 NOV 24 | HSLW Network   | P, S | NETWORK | <u>54</u> |
| 11 NOV 24 | Effective Leadership for Aspiring Leaders & Established Subject Leaders - Monitoring | P,S  | NETWORK | <u>36</u> |
| 12 NOV 24 | PP Leads Drop In Session   | P, S | NETWORK | <u>55</u> |
| 12 NOV 24 | Reading Network  | P    | NETWORK | <u>52</u> |
| 14 NOV 24 | SENCO Network  | P,S  | NETWORK | <u>56</u> |
| 18 NOV 24 | ECT Network  | P    | NETWORK | <u>35</u> |
| 21 NOV 24 | De-escalation : Tools for your Behaviour Toolkit                                     | P,S  | COURSE  | <u>57</u> |

**Key:-**

P -

**Primary**

S -

**Secondary**

# Contents - Courses & Networks

| DATE | PROGRAMME |  |  | PAGE |
|------|-----------|--|--|------|
|------|-----------|--|--|------|

## AUTUMN TERM

|           |  |      |         |                    |
|-----------|--|------|---------|--------------------|
| 21 NOV 24 | DSL Network  | P, S | COURSE  | <a href="#">58</a> |
| 25 NOV 24 | Enhancing Writing Skills in the Primary School - Grammar & Punctuation | P    | COURSE  | <a href="#">41</a> |
| 28 NOV 24 | Dyslexia in the Classroom  | P, S | COURSE  | <a href="#">59</a> |
| 03 DEC 24 | Middle Leader Professional Learning & Development                      | S    | NETWORK | <a href="#">39</a> |
| 03 DEC 24 | Teaching & Learning Leaders Forum                                      | S    | NETWORK | <a href="#">40</a> |
| 04 DEC 24 | Writing Moderation   | P    | NETWORK | <a href="#">60</a> |
| 05 DEC 24 | Mastering Non-Fictional Writing  | P    | COURSE  | <a href="#">61</a> |

## SPRING TERM

|           |                                   |   |         |                    |
|-----------|-----------------------------------|---|---------|--------------------|
| 03 DEC 24 | Teaching & Learning Leaders Forum | S | NETWORK | <a href="#">40</a> |
| 04 DEC 24 | Writing Moderation                | P | NETWORK | <a href="#">60</a> |
| 05 DEC 24 | Mastering Non-Fictional Writing   | P | COURSE  | <a href="#">61</a> |

**Key:-**

P -

**Primary**

S -

**Secondary**

# Contents - Courses & Networks

| DATE               | PROGRAMME   |      |         | PAGE                      |
|--------------------|---|------|---------|---------------------------|
| <b>SPRING TERM</b> |   |      |         |                           |
| 13 JAN 25          | Maths Network                                     | P    | NETWORK | <a href="#"><u>21</u></a> |
| 15 JAN 25          | Colourful Semantics                               | P, S | COURSE  | <a href="#"><u>62</u></a> |
| 16 JAN 25          | EYFS Network                                      | P    | NETWORK | <a href="#"><u>18</u></a> |
| 20 JAN 25          | ECT Network                                       | P    | NETWORK | <a href="#"><u>35</u></a> |
| 21 JAN 25          | RE Network  | P    | NETWORK | <a href="#"><u>27</u></a> |
| 21 JAN 25          | Writing Network                                   | P    | NETWORK | <a href="#"><u>30</u></a> |
| 22 JAN 25          | New to Role - SEND focus & Introduction to CPOMS  | P,S  | NETWORK | <a href="#"><u>15</u></a> |
| 03 FEB 25          | Primary Phase Leaders Network                     | P    | NETWORK | <a href="#"><u>38</u></a> |
| 04 FEB 25          | Subject Leadership - the Essentials Part 2        | P, S | COURSE  | <a href="#"><u>45</u></a> |
| 06 FEB 25          | Deputy Head & Assistant Heads Group               | P    | NETWORK | <a href="#"><u>43</u></a> |
| 06 FEB 25          | Middle Leader Professional Learning & Development | S    | NETWORK | <a href="#"><u>39</u></a> |

**Key:-**

P -

**Primary**

S -

**Secondary**



# Contents - Courses & Networks

| DATE               | PROGRAMME  |      |         | PAGE      |
|--------------------|--|------|---------|-----------|
| <b>SPRING TERM</b> |  |      |         |           |
| 06 FEB 25          | Teaching & Learning Leaders Forum  | S    | NETWORK | <u>40</u> |
| 10 FEB 25          | Enhancing Writing Skills in the Primary School -<br>Modelling Writing & Editing  | P    | COURSE  | <u>42</u> |
| 13 FEB 25          | DT Network   | P    | NETWORK | <u>63</u> |
| 25 FEB 25          | Outdoor Learning & Forest Leaders Network  | P    | NETWORK | <u>24</u> |
| 26 FEB 25          | Reading Network  | P    | NETWORK | <u>52</u> |
| 26 FEB 25          | Secondary English - Reading Focus  | S    | COURSE  | <u>64</u> |
| 27 FEB 25          | SENDCO Network   | P,S  | NETWORK | <u>56</u> |
| 03 MAR 25          | ECT Network  | P    | NETWORK | <u>35</u> |
| 04 MAR 25          | Effective Leadership for Aspiring Leaders<br>Established Subject Leaders - Dealing with<br>Challenges & Underperforming Colleagues | P, S | COURSE  | <u>36</u> |
| 06 MAR 25          | History Network  | P    | NETWORK | <u>66</u> |
| 04 MAR 25          | Deputy Heads Professional Learning &<br>Leadership Group   | S    | NETWORK | <u>48</u> |

**Key:-**

P -

**Primary**

S -

**Secondary**

# Contents - Courses & Networks

| DATE | PROGRAMME |  |  | PAGE |
|------|-----------|--|--|------|
|------|-----------|--|--|------|

## SPRING TERM

|           |   |      |         |                    |
|-----------|---|------|---------|--------------------|
| 11 MAR 25 | Science Network                                   | P    | NETWORK | <a href="#">28</a> |
| 12 MAR 25 | Writing Moderation                                | P    | NETWORK | <a href="#">60</a> |
| 13 MAR 25 | Middle Leader Professional Learning & Development | S    | NETWORK | <a href="#">39</a> |
| 13 MAR 25 | Teaching & Learning Leaders Forum                 | S    | NETWORK | <a href="#">40</a> |
| 17 MAR 25 | Art Network                                       | P    | NETWORK | <a href="#">67</a> |
| 18 MAR 25 | HSLW Network                                      | P, S | NETWORK | <a href="#">54</a> |
| 18 MAR 25 | Geography Network                                 | P    | NETWORK | <a href="#">49</a> |
| 20 MAR 25 | EAL Network                                       | P, S | NETWORK | <a href="#">50</a> |
| 25 MAR 25 | Inspiring Young Poets - The Teaching of Poetry    | P    | COURSE  | <a href="#">68</a> |
| 27 MAR 25 | DSL Network                                       | P, S | COURSE  | <a href="#">58</a> |

**Key:-**

P -

**Primary**

S -

**Secondary**

## Contents - Courses & Networks

| DATE               | PROGRAMME   |      |         | PAGE      |
|--------------------|---|------|---------|-----------|
| <b>SUMMER TERM</b> |   |      |         |           |
| 25 APR 25          | Subject Leadership - the Essentials Part 3  | P, S | COURSE  | <u>45</u> |
| 28 APR 25          | Challenging Conversations   | P, S | COURSE  | <u>69</u> |
| 28 APR 25          | ECT Network   | P    | NETWORK | <u>35</u> |
| 29 APR 25          | Deputy Head & Assistant Heads Group   | P    | NETWORK | <u>43</u> |
| 06 MAY 25          | Maths Network   | P    | NETWORK | <u>21</u> |
| 07 MAY 25          | Supporting Students with Self Harm  | P, S | COURSE  | <u>70</u> |
| 08 MAY 25          | Primary Phase Leaders Network   | P    | NETWORK | <u>38</u> |
| 08 MAY 25          | Teaching & Learning Leaders Forum   | S    | NETWORK | <u>40</u> |
| 08 MAY 25          | Middle Leader Professional Learning & Development   | S    | NETWORK | <u>39</u> |
| 15 MAY 25          | EYFS Network  | P    | NETWORK | <u>19</u> |
| 19 MAY 25          | Effective Leadership for Aspiring Leaders<br>Established Subject Leaders - Effective Implementation | P, S | COURSE  | <u>37</u> |

**Key:-**

P -

**Primary**

S -

**Secondary**

## Contents - Courses & Networks

| DATE               | PROGRAMME   |      |         | PAGE                      |
|--------------------|---|------|---------|---------------------------|
| <b>SUMMER TERM</b> |   |      |         |                           |
| 20 MAY 25          | Secondary English - Fluency Focus                     | S    | COURSE  | <a href="#"><u>65</u></a> |
| 20 MAY 25          | Reading Network                                       | P    | NETWORK | <a href="#"><u>53</u></a> |
| 22 MAY 25          | SENDCO Network  | P, S | NETWORK | <a href="#"><u>56</u></a> |
| 04 JUN 25          | Writing Moderation                                    | P    | COURSE  | <a href="#"><u>60</u></a> |
| 12 JUN 25          | Deputy Heads Professional Learning & Leadership Group | S    | NETWORK | <a href="#"><u>48</u></a> |
| 19 JUN 25          | Deputy Head & Assistant Heads Group                   | P    | NETWORK | <a href="#"><u>43</u></a> |
| 23 JUN 25          | ECT Network   | P    | NETWORK | <a href="#"><u>35</u></a> |
| 26 JUN 25          | Teaching & Learning Leaders Forum                     | S    | NETWORK | <a href="#"><u>40</u></a> |
| 26 JUN 25          | Middle Leader Professional Learning & Development     | S    | COURSE  | <a href="#"><u>39</u></a> |
| 02 JUL 25          | HSLW Network  | P, S | NETWORK | <a href="#"><u>54</u></a> |

**Key:-**

P -

**Primary**

S -

**Secondary**

## Contents - Courses & Networks

| DATE | PROGRAMME |  |  | PAGE |
|------|-----------|--|--|------|
|------|-----------|--|--|------|

### SUMMER TERM

|           |             |      |         |                    |
|-----------|-------------|------|---------|--------------------|
| 09 JUL 25 | DSL Network | P, S | NETWORK | <a href="#">58</a> |
| 14 JUL 25 | ECT Network | P    | NETWORK | <a href="#">35</a> |

### OTHER DEVELOPMENT OPPORTUNITIES

|         |  |      |        |                    |
|---------|--|------|--------|--------------------|
| VARIOUS | National Professional Qualifications (NPQ) | P, S | COURSE | <a href="#">71</a> |
| VARIOUS | Schools Alliance for Excellence (SAFE)     | S    | COURSE | <a href="#">72</a> |
| VARIOUS | SIAMS Training & Support - LPCAT Schools   | P    | COURSE | <a href="#">73</a> |

**Key:-**

P -

**Primary**

S -

**Secondary**



## SUITABLE FOR:

All staff

Pre-recorded session delivered by Charlotte Harrison, Ex-Acting Headteacher, Senior Vice Principle & Pastoral Leader & Safeguarding Consultant

**INSET**

**Primary**

**Secondary**

# Safeguarding

This session will be pre-recorded & will be made available for viewing in your own school.

An annual safeguarding update is mandatory for all staff.

It ensures all staff are updated with KCSIE (Keeping Children Safe in Education) latest changes and any other updates within national guidance.

It will also provide reminders about key safeguarding messages.

This session will run on:  
02 Sep 2024/03 SEP 2024\*

\*at the discretion of the  
Headteacher

**INSET**

Venue: Own school





## SUITABLE FOR:

This training is designed for teacher, ECTs, TAs and LSAs, who are new to the role and new to working in a school

Facilitated by Olivia Wernick, Trust Inclusion Lead & Holly Wise, Trust Safeguarding & Mental Health Lead

**INSET**

**Primary**

**Secondary**

# New to Role – SEND focus & Introduction to CPOMS

This interactive session will cover the following key topics :-

- How to work with children in the classroom who have additional needs
- The SEND Code of Practice 2015, including the model of the Assess, Plan, Do, Review Cycle and the four categories of need. Including what your role is as Teacher and TA
- Research around TAs and best practice for the use of TAs/LSAs
- Guide to using CPOMS
- SEND Code of Practice
- Types of SEND Need, categories of need
- Piaget’s Learning Theory
- Vygotsky’s Learning Theory
- Zone of Proximal Development
- Scaffolding and Differentiation

***Please note a laptop/suitable device will be required on the day to access resources. Mobile phone is not sufficient***

This session will run on:  
03 Sep 2024  
1300-1530 at Kings College

**INSET**

22 Jan 2025 0930-1230 at  
George Abbot TBC



**Sign Up**



# Music Network

## Session 1: 08 Oct 2024 morning

We will explore musical progression from primary to secondary, focusing on Year 2 of a cross-trust project. The aim is to enhance subject knowledge and confidence by understanding musical terms, creating compositions, and structuring lessons for various needs across the primary phase. We will build on rhythm by incorporating pitch & melody, creating compositions together, and sharing effective schemes of work from EYFS, KS1, and KS2 to adapt to our settings.

## Session 1: 08 Oct 2024 afternoon

We will examine "The Power of Music to Change Lives: A National Plan for Music Education," discussing its objectives & initiatives to enhance music education nationwide. Through collaborative discussions, we will generate ideas on implementing these initiatives in our schools to maximise the transformative potential of music education for our students.

## Session 2: 25 Oct 2024

Following the session "A National Plan for Music Education," this workshop lets you develop your own music plan. You'll work with other music leads in the trust, giving you a chance to ask for advice and share ideas. This collaborative environment will help you refine your strategy and align it with the national plan, benefiting from the group's expertise.

This session will run on:

08 Oct 2024

0900–1230 at Guildford County

1330–1600 at Tillingbourne

Junior School

25 Oct 2024 1300–1600 at

Northmead Junior School

INSET



Sign Up



## SUITABLE FOR:

This group is designed for all Primary Music Leads

Facilitated by Caroline Gale, Director of Music at Guildford County & Rachel Houghlock, Primary Practice Development Lead

INSET

Primary



# Art Network & History Network

## Becoming a Heritage School & Improving Cultural Capital Offerings

Learning Partners have been selected for the 'Heritage Schools in Surrey initiative.' Becoming a Heritage School highlights a school's excellence in enriching students' experiences with local history, heritage, and culture. This nationally recognised kitemark from Historic England is approved by the Department for Education.

This course, delivered by Surrey Heritage and Surrey Museums Partnership, supports schools in becoming accredited Heritage Schools. The morning session features a Cultural Marketplace, where participants can engage with experts from museums, galleries, and heritage sites. The afternoon offers a practical session on incorporating local heritage into the curriculum and addressing cultural gaps. Following the CPD session, schools will receive a free half-day of development support.

This session will run on:

25 Oct 2024 0900-1600 at  
Surrey History Centre  
130 Goldsworth Road  
Woking  
GU21 6ND

INSET



Sign Up



## SUITABLE FOR:

This joint network session is designed for Art Leads & History Leads

Facilitated by Surrey Heritage and Surrey Museums Partnership

INSET

Primary



## SUITABLE FOR:

Option 1 : designed for all experienced Early Years professionals, including nursery practitioners, teaching assistants and teachers

Option 2 : designed for any staff new to Early Years or for those looking to revisit the principles of good Early Years practice and reflect on and enhance their current practice.

Facilitated by Gaby Jones & Sophie Murray

**INSET**

**Primary**

## EYFS Course

Participants have a choice of 2 courses to book onto during this afternoon session.

### **Option 1: Outdoor Play in the Early Years. Facilitated by Gaby Jones**

We will be watching an online course where practitioner, consultant and author, Alistair Bryce Clegg, shares his experiences and best practice examples of effective outdoor play in the Early Years.

The course contains 6 modules:-

1. The Importance of Outdoor Play in the Early Years
2. What Makes a Successful Outdoor Space?
3. Cognitive & Emotional Benefits of Outdoor Play
4. Physical Benefits of Outdoor Play
5. Types of Outdoor Play
6. Risky Play

This session will run on:

25 Oct 2024 1300-1600

**INSET**

Venue: Guildford Grove  
Primary School



**Sign Up**





## SUITABLE FOR:

Option 1 : designed for all experienced Early Years professionals, including nursery practitioners, teaching assistants and teachers

Option 2 : designed for any staff new to Early Years or for those looking to revisit the principles of good Early Years practice and reflect on and enhance their current practice.

Facilitated by Gaby Jones & Sophie Murray

**INSET**

**Primary**

## EYFS Network

### Option 2: Developing Good Practice in the Early Years. Facilitated by Sophie Murray

Suitable for any staff new to the early years or for those looking to revisit the principles of good early years practice and reflect on and enhance their current practice.

This session will explore the requirements of the EYFS framework and EYFS Curriculum and the different areas of learning.

It will look at the seven areas of learning and will explore the EYFS learning environment and how continuous and enhanced provision can support learning through play.

We will also look at the role of the adult within provision & their role in observing play and moving learning on.

This session will run on:

25 Oct 2024 1300-1600

**INSET**

Venue: Guildford Grove Primary School



**Sign Up**





## SUITABLE FOR:

This training is designed for Maths Leads

Facilitated by Mili Daly & Chloe Jackman

**INSET**

**Primary**

## Maths Network

The focus for our Maths network meetings this year will support Maths subject leaders and classroom practitioners to deepen their understanding of the times tables, specifically focusing upon the pedagogy behind multiplication, strategies used to teach times tables, intervention to support this and assessment.

### Session 1: 25 Oct 2024

Participants will examine how times tables are taught in their schools. They should come prepared with insights on their current methods. We will discuss similarities and differences, aiming to support each other in developing multiplication teaching strategies. Participants will reflect on their school's best practices for teaching times tables, monitoring progress, and tracking development. We will review curriculum overviews to identify when and by whom times tables are taught, ensuring the appropriate timing and preparation. Lastly, we will explore effective strategies for teaching times tables, allowing participants to implement these in their classrooms.

These sessions will run on:

25 Oct 2024 1300-1600

**INSET**

13 Jan 2025 1315-1545

06 May 2025 1300-1530

Venue: Tillingbourne Junior School



**Sign Up**





## SUITABLE FOR:

This training is designed for Maths Leads

Facilitated by Mili Daly & Chloe Jackman

**INSET**

**Primary**

# Maths Network

## Session 2 : 13 Jan 2025

We will discuss effective assessment methods for times tables in our schools, identifying common systems for tracking and monitoring student progress. Chloe, Tillingbourne Junior School's Maths lead, will share their assessment approach and its effectiveness. We will address strategies for supporting students who are not meeting the expected standards in Maths, aiming to develop trust-wide practices. Participants will also explore effective times tables teaching strategies to try in their classrooms.

## Session 3 : 06 May 2025

Examining how to teach each specific set of times tables, focusing on supporting each year group to plan and teach effectively with fun, engaging methods like songs, games, and activities. We will discuss strategies for supporting the lowest 20% of students, including scaffolding and Maths interventions.

We will also explore ways to encourage parental engagement in Maths, generating ideas to share with schools via newsletters or websites. Participants will learn effective times tables teaching strategies to implement in their classrooms.

These sessions will run on:

25 Oct 2024 1300-1600

**INSET**

13 Jan 2025 1315-1545

06 May 2025 1315-1545

Venue: Tillingbourne Junior School



**Sign Up**





## SUITABLE FOR:

This network is designed for Computing Leads

Facilitated by Phil Wickens, National Specialist in Primary Computing Leadership

**INSET**

**Primary**

# Computing Network

This session will be delivered by Phil Wickens, National Specialist in Primary Computing Leadership (National Centre for Computing Education).

Training will be focused on:

- strategies and resources for adapting learning to meet the needs of all pupils, including those with SEND
- supporting staff to improve their confidence and skills in delivering the computing curriculum.

There will also be a question and answer session where Phil will provide advice on individual issues.

This session will run on:

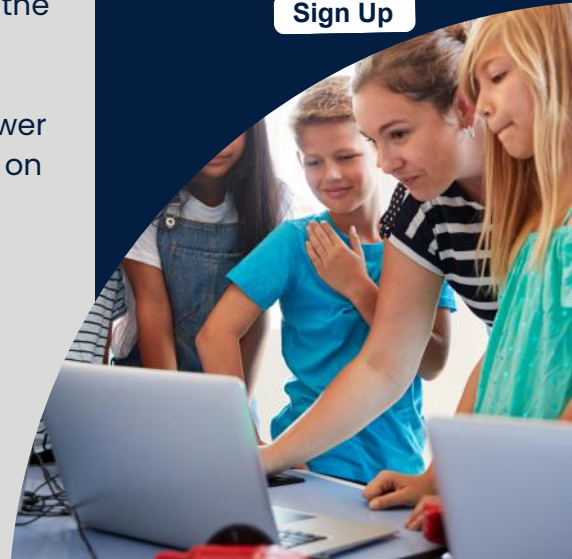
25 Oct 2024 1300-1600

**INSET**

Venue: Tillingbourne Junior School



**Sign Up**





## SUITABLE FOR:

This network is designed for MFL Leads

Facilitated by Kristy Hunt, MFL Lead at Tillingbourne Junior School

**INSET**

**Primary**

## MFL Network

This session will focus on assessment in primary foreign languages.

We will be working together to discuss various techniques and tools to assess students' progress effectively.

In addition, we will be looking at both formative and summative assessment and how to best record and use results to impact both teaching and learning.

This session will run on:

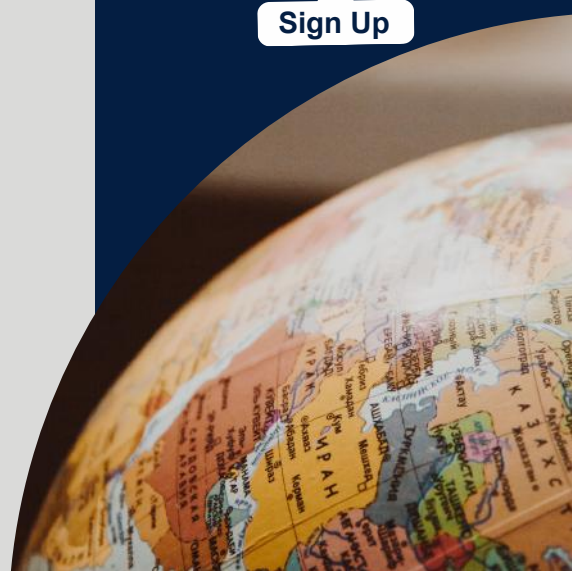
25 Oct 2024 1300-1600

**INSET**

Venue: Tillingbourne Junior School



**Sign Up**





# Outdoor Learning & Forest Leaders Network

These sessions will run on:

25 Oct 2024 1300-1600 at Burpham School **INSET**

25 Feb 2025 1300-1600 at TBC

## SUITABLE FOR:

This training is designed for Outdoor Learning Leads, Forest Leaders & Assistants, Geography Leads or other teachers who are passionate about taking more learning outside across the school.

Facilitated by Jessica Lamb, Burpham Primary

**INSET**

**Primary**

### Session 1 : 25 Oct 2024

We will discuss how schools across the Trust are currently embedding learning outside the classroom across curriculum areas. This will include:-

- looking at how some schools are monitoring the coverage of curriculum subjects outside.
- practical examples of how to support your class teachers to take more learning outside.
- opportunity to look around the school grounds at Burpham Primary School to learn how the grounds are currently used and equipped for outdoor learning.

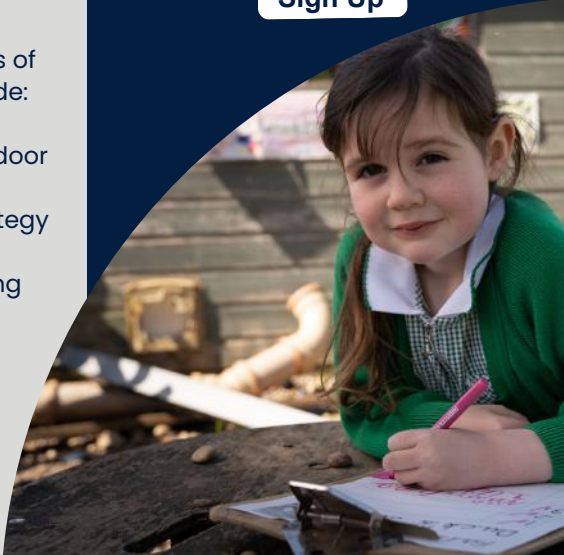
### Session 2 : 25 Feb 2025

Group members will be invited to suggest areas of focus for prior to this session. These could include:

- Monitoring outdoor learning
- What is The Learning Partners' Vision for outdoor learning?
- The Sustainability and Climate Change Strategy
- Effective leadership of outdoor learning
- Forest School vs teacher-led outdoor learning
- Teaching for wellbeing outdoors



**Sign Up**







## SUITABLE FOR:

This network is designed for PE Leads

Facilitated by Lorraine Jackson, Sports Coach, Pirbright Primary School

**INSET**

**Primary**

# PE Network

The network will be focusing on the the following areas:-

## Supporting SEND & ensuring high quality PE for all

This session will look at understanding and overcoming the challenges that Neurodiverse children face in PE lessons, school sports sessions and fitness. It will look to explore ways and coping mechanisms for the pupils themselves as well as the staff to try, helping make lessons and sessions more enjoyable and productive.

## Enhancing physical education provision and improving access to sport and physical activity in school

A review of the recent policy - identifying pertinent changes / additions to be aware of.

## Sharing of best practice

Hints and tips from all attendees.

25

This session will run on:

25 Oct 2024 1300-1600

**INSET**

Venue: Pirbright Primary School



**Sign Up**





## SUITABLE FOR:

This network is designed for PSHE Leads

Facilitated by Emma Baker, SENDCO at Loseley Fields Primary School

**INSET**

**Primary**

## PSHE Network

This network is aimed at anyone leading PSHE across their infant or primary school.

In this network we will be looking at a PSHE initiative that looks at including citizenship into your subject with a chance of gaining an award for your school.

We will also look at any PSHE updates to policies and resources linked to PSHE including RSE.

This session will run on:

25 Oct 2024 1300-1600

**INSET**

Venue: Loseley Fields Primary School



**Sign Up**





## SUITABLE FOR:

This network is designed for RE leads

Facilitated by Lucy Dorrington & Carlota Reviriego

**INSET**

**Primary**

# RE Network

## Session 1 : 25 Oct 2024

This will be an opportunity to work collaboratively on the development of Key Performance Indicators (KPIs) that will serve as a foundation for creating assessment options for the new Religious Education (RE) Surrey Syllabus. By working together, participants can leverage their diverse perspectives and expertise to establish meaningful and measurable KPIs. These indicators will provide clear benchmarks and expectations for both educators and students, ensuring that the syllabus meets its educational goals effectively.

## Session 2 : 21 Jan 2025

The KPIs developed in the previous session will guide the creation of various assessment tools and methods. These assessments will be designed to evaluate how well students are meeting the established KPIs, thereby ensuring that the learning objectives of the RE Surrey Syllabus are being achieved. The collaborative nature of this session aims to foster a sense of shared ownership and commitment among educators, which is crucial for the successful implementation and ongoing refinement of the syllabus.

These sessions will run on:

25 Oct 2024 1300-1600

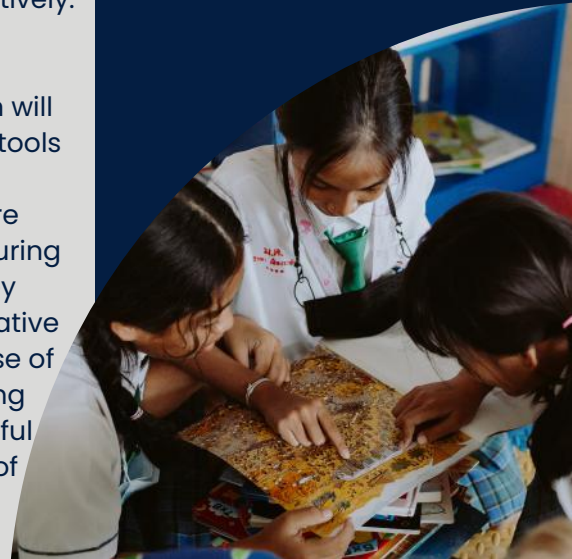
**INSET**

21 Jan 2025 1315-1545

Venue: Tillingbourne Junior School



**Sign Up**





## SUITABLE FOR:

This network is designed for Science Leads.

Session 1 facilitated by Tom Holloway, Director of Regional Programme for the PSTT. He leads a team of primary science experts that provide bespoke support and training to schools and teachers across the UK.

Session 2 facilitated by Abi Rudall, Assistant Headteacher at Boxgrove Primary School

**INSET**

**Primary**

# Science Network

## Session 1: 25 Oct 2024

### How to effectively assess primary science

Aims are to explore a variety of effective AfL strategies for primary science

- To explore key primary science assessment resources including ASE PLAN and PSTT TAPS

To learn how to run a science moderation

## Session 2: 06 Mar 2025

### EYFS Engagement

This session is designed to prioritise and enhance high-quality science opportunities specifically tailored for Early Years Foundation Stage (EYFS) pupils, employing the continuous provision model as its framework.

These sessions will run on:

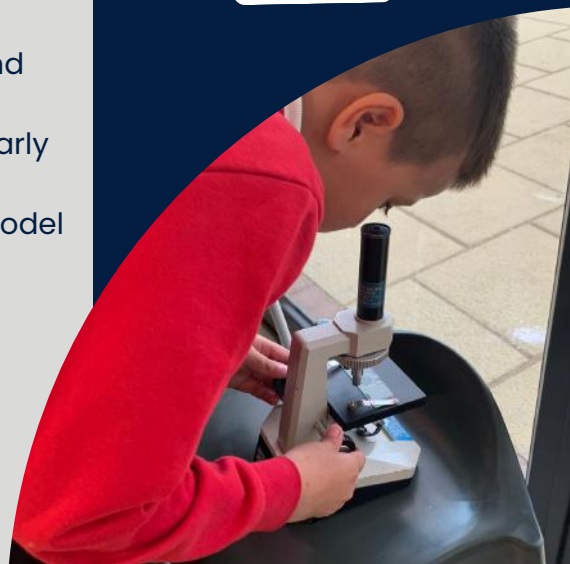
25 Oct 2024 1300-1600 at Loseley Fields

**INSET**

06 Mar 2025 1315 -1530 at Boxgrove Primary School



**Sign Up**





## **SUITABLE FOR:**

This training is designed for all staff

Facilitated by Olivia Wernick, Trust Inclusion Lead

**INSET**

**Secondary**

## **Spotlight on SEND**

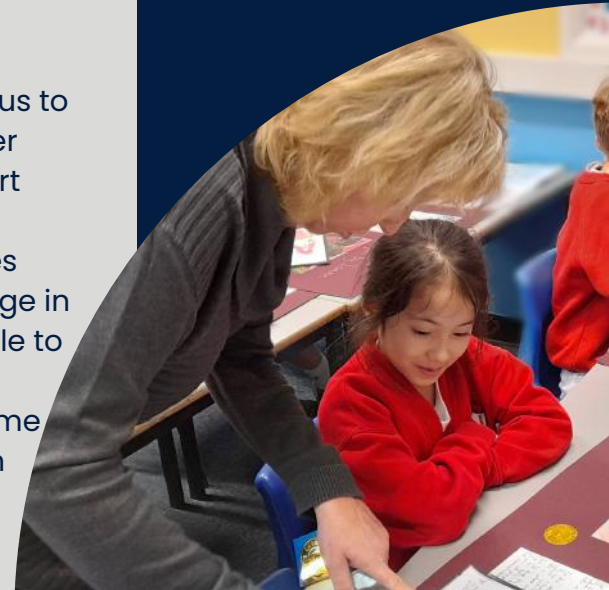
As secondary school practitioners, we rarely have the opportunity to develop our knowledge of children's reading skills even though we are all fully aware that the children's ability to read underpins their ability access almost all the learning that takes place in our classrooms. This session will look at how children learn to read and some possible difficulties that may inhibit a child's reading journey.

The session will later allow time for us to work in our Departments to consider how we as practitioners can support struggling readers to access our curriculum in spite of the challenges they face and how text and language in your subject can become accessible to all students, whilst deepening our understanding of the difficulties some young people face when reading in our classrooms.

This session will run on:  
25 Oct 2025 0900-1200

**INSET**

Venue: Own school





# Writing Network

## Session 1: 25 Oct 2024

This session will focus on increased improvement of writing exemplars

Enhance writing exemplars with detailed annotations that are aligned with the new trust assessment framework to help teachers evaluate student writing consistently throughout the school year.

This structured approach aims to provide educators with valuable support in effectively assessing writing skills, promoting a more cohesive and targeted teaching strategy.

## Session 2: 21 Jan 2025

We will explore the innovative use of Artificial Intelligence (AI) in supporting the planning and development of writing units. Discover how AI tools can enhance, extend, and refine the delivery of writing curriculum in the classroom. Gain insights into leveraging AI to elevate writing instruction and achieve enhanced learning outcomes.

This session will run on:

25 Oct 2024 1300-1600

**INSET**

21 Jan 2025 1315-1600

Venue: Stoughton Infant School



**Sign Up**

## SUITABLE FOR:

This training is designed for Writing Leads

Facilitated by Shane Vickery, Writing Lead at Stoughton Infant School

**INSET**

**Primary**



## Spotlight on Exam Preparation

This session will focus on the  
This inset will provide an opportunity for teachers and curriculum leaders across our Trust to share the analysis of their mock exam data, and to collaborate in the planning of appropriate next steps to support students as they work towards success in the summer series of exams in 2025.

We hope to have the involvement of exam board associates to guide our thinking and implementation.

This session will run on:  
06 Jan 2025 0900-1200

**INSET**

Venue: Own school

### **SUITABLE FOR:**

All staff

**INSET**

**Secondary**





## **SUITABLE FOR:**

All staff

Pre-recorded sessions delivered by a variety of experienced professionals within their field

**INSET**

**Primary**

**Secondary**

## **SEND Focus**

You will have access to a suite of pre-recorded sessions on priority SEND specific areas, delivered by a specialist in their field.

The training will include sessions on the following:-

- PDA - Pathological Demand Avoidance
- Dyslexia
- ASD (classroom environment and strategies)
- Anxiety

The format & structure of how this session will run will be at the discretion of the Headteacher.

This session will run on:  
29 Jan 2025

**INSET**

Venue: Own school







## SUITABLE FOR:

This training is designed for all staff

Pre-recorded webinar by Lee Parkinson, Owner of Mr P ICT

**INSET**

**Primary**

## Mr P ICT

In an upcoming recorded webinar, Mr P ICT will showcase a variety of innovative tools designed to help teachers reduce their workload through the power of artificial intelligence.

This session aims to empower educators by introducing them to AI-driven solutions that streamline administrative tasks and lesson planning, allowing more time to focus on teaching. Additionally, Mr. P ICT will demonstrate a selection of interactive tools that can be used directly in the classroom to enhance student engagement and make learning experiences more dynamic and captivating

This session will be available from the end of January 2025.

The recording can be used on the Trust Inset afternoon on the 30 Jun 2025 or during a staff meeting at the discretion of the Headteacher

**INSET**

Venue: Own school





## SUITABLE FOR:

Subject specialist  
teachers & leaders

**INSET**

**Secondary**

## Curriculum Collaboration

As a Trust, we are in the early stages of establishing opportunities for subject specialist teachers and leaders to collaborate. Currently, there are great examples of formal and informal collaboration, and we are keen to ensure that teachers and leaders have the chance to benefit from partnership with peer experts as they engage in continuing professional learning.

Our curriculum collaboration offer for 2024/ 25 aims to serve you in a way that works for each curriculum group. Therefore, we will be in contact with subject leaders across the Trust to agree what is needed to achieve effective collaboration between peers. This is likely to be different for each curriculum area and could range from informal communication to formal and regular partnership meetings.

We look forward to supporting you in your professional learning in 2024/25.



**COMING SOON**





## SUITABLE FOR:

This training is designed for ECTs & ECTIs

Facilitated by Alison Fitch, Headteacher and Sophie Watts, Upper School Leader & SLT member at Boxgrove Primary School.

**Primary**

## ECT Network

Participants in this group will meet throughout the year to share best practice and discuss issues arising in their early careers.

Group members will be able to suggest areas of focus for the sessions - previous key themes have included:

- Workload management
- Well being
- Assessment
- Career progression
- Resilience
- Difficult conversations

Please plan to attend all of the sessions to gain the maximum benefit from this network group.



**Sign Up**

35

These sessions will run on:

30 Sep 2024 1430-1630

18 Nov 2024 1430-1630

20 Jan 2025 1430-1630

03 Mar 2025 1430-1630

28 Apr 2025 1430-1630

23 Jun 2025 1430-1630

14 Jul 2025 1600-1700

Venue: Boxgrove Primary School





## SUITABLE FOR:

This training is designed for aspiring leaders & established subject leaders with the skills, knowledge & strategies needed to be effective with driving improvements

Facilitated Rachel Hughlock, Primary Practice Development Lead

\*Sessions 1 & 3 are suitable for all staff including non teaching staff

# Effective Leadership for Aspiring Leaders & Established Subject Leaders

## Session 1: 23 Sep 2024 \*

### Interpersonal Skills & Dealing with Challenges

This session is dedicated to enhancing the interpersonal skills essential for understanding and practicing effective leadership, enabling participants to lead confidently and build strong, productive relationships in their professional environments. Through interactive discussions and practical exercises, attendees will develop the ability to lead with empathy, clarity, and confidence, fostering a collaborative and supportive atmosphere. Participants will engage in activities designed to improve communication, empathy, conflict resolution, and adaptability, equipping them with the tools necessary to navigate professional challenges and enhance their leadership capabilities.

## Session 2: 11 Nov 2024

### Enhancing Teaching and Learning through Effective Monitoring and Action Planning

This session explores the critical role of monitoring, focusing on the different forms on monitoring, the data and information it creates, and how to give constructive feedback so that it can significantly enhance both teaching practices and student learning outcomes. The session will also cover writing impact statements and effective action planning.

These sessions will run on:

23 Sep 2024 1315-1530

11 Nov 2024 1315-1530

04 Mar 2025 1315-1530

19 May 2025 1315-1530

Venue: Boxgrove Primary School



Sign Up





## SUITABLE FOR:

This training is designed for aspiring leaders & established subject leaders with the skills, knowledge & strategies needed to be effective with driving improvements

Facilitated Rachel Hughlock, Primary Practice Development Lead

\*Sessions 1 and 3 are suitable for all staff including non teaching staff.

# Effective Leadership for Aspiring Leaders & Established Subject Leaders

## Session 3 – 04 Mar 2025\*

### Dealing with Challenges and Underperforming Colleagues

This session focuses on equipping participants with practical techniques and tools to effectively manage challenging conversations and support underperforming colleagues. By fostering a constructive and empathetic approach, attendees will learn how to address performance issues, provide actionable feedback, and create an environment conducive to professional growth and improvement.

## Session 4 – 19 May 2025

### Curriculum development and the Implementation Cycle: Strategies for Effective Implementation of New Initiatives

This session provides a guide to the implementation cycle, offering participants the knowledge and tools needed to successfully implement new initiatives within their organisations. From initial planning to evaluation and refinement, attendees will learn step-by-step strategies to ensure that new projects are effectively integrated and sustained.

These sessions will run on:

23 Sep 2024 1315-1530

11 Nov 2024 1315-1530

04 Mar 2025 1315-1530

19 May 2025 1315-1530

Venue: Boxgrove Primary School



Sign Up





## SUITABLE FOR:

This training is designed for Primary Phase Leaders

Facilitated by Rachel Hughlock, Trust Primary Development Leader

**Primary**

## Primary Phase Leaders Network

This network is designed to enhance leadership & management skills. Each session begins with a tour around the school, allowing participants to magpie ideas and share best practices. Sessions incorporate focused CPLD on effective leadership & developing management skills to ensure teams run efficiently. Join us to gain valuable insights and practical strategies for driving success in your educational setting.

Objectives are:-

- to gather innovative ideas ("magpieing") that can be adapted & implemented in participants' own schools.
- to enhance leadership skills and pedagogical knowledge through a targeted CPD session.
- to foster a network of phase leaders for ongoing support & idea sharing.

These sessions will run on:

03 Oct 2024 1315-1600 at  
Burpham Primary School  
03 Feb 2025 1315-1600 at  
Tillingbourne Junior School  
08 May 2025 1315-1600 at  
Stoughton Infant & Nursery



**Sign Up**





## SUITABLE FOR:

This training is designed for aspiring & new to Middle Leadership staff with curriculum or pastoral responsibilities

Facilitated by Michele Miller, Consultant for Secondary School Improvement Leadership, Learning & Development

**Secondary**

## Middle Leader Professional Learning & Development

The Learning Partners Middle Leader Development Programme is designed to support aspiring or new to role curriculum or pastoral leaders. The programme will run half termly over the course of the year, giving participants the opportunity to practice and grow their leadership expertise over time.

Participants will work on a specific change that needs to be made with the team that they lead. If the colleague is not yet in a leadership role, they will be able to identify a project to work on during the course of the programme.

The programme will support and develop participants to lead change by understanding how to lead people whilst implementing change. Sessions are in person, and attendance at every session is compulsory.

These sessions will run on:

03 Oct 2024 1400-1600  
03 Dec 2024 1400-1600  
06 Feb 2025 1400-1600  
13 Mar 2025 1400-1600  
08 May 2025 1400-1600  
26 Jun 2025 1400-1600

Venue: Loseley Fields Primary School



**Sign Up**





## SUITABLE FOR:

This training is designed for Secondary Teaching & Learning Leads

Facilitated by Michele Miller, Consultant for Secondary School Improvement Leadership, Learning & Development

**Secondary**

# Teaching & Learning Leaders Forum

The Teaching & Learning Leaders Forum aims to bring together and support colleagues responsible for the leadership of Secondary phase T&L across the Trust.

This forum provides an opportunity to share thinking, learn about current research and review impact through peer support and challenge.

Sessions are hosted by each of our schools in turn, creating the opportunity for peer learning, support and challenge.



**Sign Up**

These sessions will run on:

03 Oct 2024 0900–1130 at Kings College

03 Dec 2024 0900–1130 at George Abbot

06 Feb 2025 0900–1130 at Glebelands

13 Mar 2025 0900–1130 at Guildford County

08 May 2025 0900–1130 at Fullbrook

26 Jun 2025 0900–1130 at Surrey Maths School







## SUITABLE FOR:

This training is designed for all Yr 2-6 teachers

Facilitated by Rachel Hughlock, Primary Practice Development Lead

**Primary**

# Enhancing Writing Skills in the Primary School

## Session 1: 04 Oct 2024

### Immersion

During this session, we will explore various types of hooks to learning, demonstrating how to make them both engaging and purposeful. We will conduct 'book talk' activities to help pupils develop a deeper understanding of characterisation, setting, tone, and atmosphere. Additionally, we will emphasise the importance of using an exemplar piece of text, employing toolkits to identify the elements that contribute to its effectiveness, so that pupils can recognise and incorporate these essential components into their own writing.

## Session 2: 25 Nov 2024

### Making Grammar & Punctuation Enjoyable

Grammar and punctuation are essential in both education and life, and pupils need explicit instruction and contextual practice to write effectively.

We will share research on effective teaching methods, provide a range of engaging strategies and activities, demonstrate effective modeling techniques, and discuss ways to support and scaffold activities for all learners including Greater Depth to enhance their compositions. We will also explore how AI can assist teachers in developing innovative & supportive activities.

These sessions will run on:

04 Oct 2024 1315-1600

25 Nov 2024 1315-1600

10 Feb 2025 1315-1600

Venue: Pyrford Primary School



Sign Up





## SUITABLE FOR:

This training is designed for all Yr 2-6 teachers

Facilitated by Rachel Hughlock, Primary Practice Development Lead

**Primary**

# Enhancing Writing Skills in the Primary School

**Continued**

**Session 3 : 10 Feb 2025**

## **Modelling writing by creating an exemplar & editing strategies to reduce cognitive overload**

One of the most effective strategies for improving writing is modelling; however, it can be challenging to pitch it correctly while incorporating grammar, punctuation, and effective composition. The second part of this session will concentrate on strategies for teaching editing, emphasizing the importance of making students active participants in their learning and maintaining their focus. By doing so, we aim to reduce cognitive overload and help students internalise the skills necessary for effective writing.

These sessions will run on:

04 Oct 2024 1315-1600

25 Nov 2024 1315-1600

10 Feb 2025 1315-1600

Venue: Pyrford Primary School



**Sign Up**





## SUITABLE FOR:

This group is designed for all Primary Deputy Heads & Assistant Heads

Facilitated by the Headteacher leading the session

**Primary**

## Deputy Head & Assistant Heads Group

**10 Oct 2024 - led by Rona Mackie, Headteacher Guildford Grove**  
Safeguarding

**6 Feb 2025 - led by Alison Fitch & Rebecca Stacey, Co-Headteachers Boxgrove**

Creating a positive culture & dealing with energy vampires

**29 Apr 2025 - led by Jo White, Headteacher Burpham**

How to gain buy in from staff, influence change & have impact

**19 Jun 2025**

Topic for discussion will be decided collectively during the course of the year

Please plan to attend all 4 sessions to gain maximum benefit from this group

These sessions will run on:

10 Oct 2024 0830-1030 at Guildford Grove Primary School

06 Feb 2025 0930-1130 at Boxgrove Primary School

29 Apr 2025 0830-1030 at Pyrford Primary School

19 Jun 2025 0830-1030 at Tillingbourne Junior School



**Sign Up**





## SUITABLE FOR:

This training is designed for anyone who is new to subject leadership or has recently taken on this role

Facilitated by Rachel Hughlock, Primary Practice Development Lead

**Primary**

**Secondary**

## Subject Leadership – the Essentials

This course will equip you with the necessary skills & knowledge to effectively lead subjects, address challenges & drive improvement in teaching.

### Session 1: 07 Oct 2024 Foundations of Effective Subject Leadership

Key Qualities and Skills: Essential qualities and roles of a subject leader, setting clear vision and goals.

Trust's Curriculum Framework: Overview and use of the framework to create a comprehensive action plan.

Action Plans: Reviewing current status, identifying improvements, and creating measurable plans.

These sessions will run on:

07 Oct 2024 1315–1530

04 Feb 2024 1315–1530

25 Apr 2025 1315–1530

Venue: Boxgrove Primary School



Sign Up





## SUITABLE FOR:

This training is designed for anyone who is new to subject leadership or has recently taken on this role

Facilitated by Rachel Hughlock, Primary Practice Development Lead

**Primary**

**Secondary**

# Subject Leadership – the Essentials

## Session 2 : 04 Feb 2025

### Monitoring and Feedback Basics

- Importance and cycle of monitoring, methods and tools, data analysis.
- Effective strategies for providing constructive feedback

## Session 3: 25 Apr 2025

### Enhancing Teaching and Learning

- Strategies for common leadership challenges, problem-solving, building resilience
- Focus on PP/SEND, improving teachers' skills, implementing best practices.
- SOAP (Subject On A Page): Creating a concise subject overview, key elements, communicating strengths and progress.

These sessions will run on:

07 Oct 2024 1315-1530

04 Feb 2025 1315-1530

25 Apr 2025 1315-1530

Venue: Boxgrove Primary School



Sign Up





## SUITABLE FOR:

This network is designed for class teachers & EYFS Leaders in Reception & Nursery.

Facilitated by Gaby Jones EYFS & Assistant Headteacher at Guildford Grove & Sophie Murray, EYFS & Phase Lead at Pyrford Primary

**Primary**

# EYFS Network

## Session 1 : 10 Oct 2024

### Problem Solving & Moving Forward

We will explore and discuss the pressing issues being faced within your early years settings and aim to form practical solutions to these. Teachers will be encouraged to complete a survey prior to attending to allow facilitators to tailor the material to best meet needs. Examples of issues that teachers may wish to raise could be: supporting SEND pupils, developing listening and attention and supporting emotional regulation.

## Session 2 : 16 Jan 2025

### PSED

We will unpick the fundamentals of personal, social and emotional development within the early years, drawing on latest research and knowledge of child development. Teachers will be invited to share best practice and consider next steps for improvement in this area.

## Session 3 : 15 May 2025

### Physical Development

We will focus on Physical Development and how this is woven through every curriculum area. Drawing on latest research evidence & knowledge of child development, facilitators and teachers will share practical ideas for supporting and developing physical development in the inside and outside learning environments.

These sessions will run on:

10 Oct 2024 1600-1730 at  
Pyrford Primary School

16 Jan 2025 1600-1730 at

Stoughton Infant & Nursery

15 May 2025 1600-1730 at

Boxgrove Primary School



Sign Up





## SUITABLE FOR:

This group is designed for Primary Assessment Leads & Headteachers

Facilitated by Shaun Fishburn, Trust Data Officer & Emma Lines, Assistant Headteacher, Tillingbourne Junior School

**Primary**

## Assessment Network

The Learning Partners Trust will implement a new test/tracking schedule for the upcoming academic year. This will encompass early years, Key Stage 1, and Key Stage 2.

This updated schedule includes termly assessments designed to monitor student progress comprehensively across all key stages.

The schedule defines both internal tests and the mandatory ones required as part of the national curriculum.

This network is an opportunity to review and discuss these updates, provide feedback and suggestions to refine the schedule as necessary to better support our students' learning journeys.

This session will run on:

15 Oct 2024 1315-1530

Venue: Tillingbourne Junior School



**Sign Up**





## SUITABLE FOR:

This group is designed for all Secondary Deputy Heads

Facilitated by Michele Miller, Consultant for Secondary School Improvement Leadership, Learning & Development

**Secondary**

## Deputy Heads Professional Learning & Leadership Group

The Learning Partner Secondary Deputy Head Professional learning group meets termly. Sessions provide the opportunity for this group to collaborate, learn, support and challenge each other as they live their senior leadership in our schools.

Sessions will be a platform to celebrate successes, share excellent practice, and to grow in leadership by dedicating time to learn, reflect and plan for next steps.

Deputies are invited to join one of two groups, (0800-1000 or 1400-1600 on the same day) with their peer school Deputy joining the other. This is to mitigate the impact of leaders being out of school at the same time.

These sessions will run on:

### Group 1

15 Oct 2024 0800-1000 at George Abbot  
06 Mar 2025 0800-1000 at Glebelands  
12 Jun 2025 0800-1000 at Guildford County

### Group 2

15 Oct 2024 1400-1600 at Kings College  
06 Mar 2025 1400-1600 at Fullbrook  
12 Jun 2025 1400-1600 at Kings College - central team meeting room



**Sign Up**







## SUITABLE FOR:

This network is designed for Geography Leads

Facilitated by  
Claire Pasculotti & Emma Brockway

**Primary**

# Geography Network

## Session 1 : 15 Oct 2024 Teaching & Learning in EYFS

This session will provide subject leaders with an opportunity to share good practice within the trust in relation to teaching and learning in EYFS and how Geography skills and knowledge are explored within Early Years classrooms. In addition it will also provide time to talk about the use of technology in Geography lessons.

## Session 2 : 18 Mar 2025 Climate Change

This session will provide subject leaders with an opportunity to discuss how climate change features in our school progression maps talking about which year groups cover the topic and what best practice looks like. This session will also provide the chance to look at what 'expected' looks like in Geography and an opportunity to complete a book look together.

This session will run on:

15 Oct 2024 1315-1530 at  
Pyrford Primary School

18 Mar 2025 1315-1530 at  
Boxgrove Primary School



**Sign Up**





## SUITABLE FOR:

This network is designed for EAL Leads

Facilitated by Rachel Hughlock, Primary Practice Development Lead

**Primary**

**Secondary**

## EAL Network

The EAL Networks for primary and secondary colleagues is designed to provide educators with a comprehensive toolkit to enhance language teaching and support student acquisition

### Session 1: 17 Oct 2024

This session focuses on the incorporation of technology, equipping educators with the skills to leverage digital tools and resources, such as interactive apps and online platforms, to create engaging and dynamic learning environments. We will be looking at Language Nut reading quest FFT for reading and phonics as well as pieces of software which will support teachers and students within lessons.

### Session 2: 20 Mar 2025

The EAL Network provides educators with essential strategies to support EAL students in the classroom. Following on from last year, further practical methods and strategies will be shared to make learning more accessible, ensuring that teachers can effectively scaffold learning and address the unique needs of EAL students.

These sessions will run on:

17 Oct 2024 1315-1600  
20 Mar 2025 1315-1600

Venue: Pyrford Primary School



Sign Up





## SUITABLE FOR:

This network is designed for teachers, TAs, LSAs, SENDCOs, Inclusion Leads, CPLD Leads & T&L Leads

Facilitated by  
Olivia Wernick, Trust  
Inclusion Lead

**Primary**

**Secondary**

# Supporting Students with ADHD

This session is aimed at those hoping to improve their classroom practice in the way that they support students with Attention Deficit and Hyperactivity Disorder.

Key topics:

- Sharing research about ADHD
- How ADHD impacts students' learning and neurological brain differences
- Strategies for managing ADHD in the classroom, meeting students' needs in the classroom and helping students to cope
- Sharing information about the requirement for Reasonable Adjustments and how to make these in lessons

The training will include hearing from students' own experiences of managing ADHD.

This session will run on:

23 Oct 2024 1000-1200

Venue: Pyrford Primary School



**Sign Up**

**ADHD**



## SUITABLE FOR:

This network is designed for Primary Subject Leaders in reading.

Facilitated by Rachel Hughlock, Primary Practice Development Lead & Leah Crawford, Educational Consultant

**Primary**

# Reading Network

## Session 1: 12 Nov 2024

### Phonics – What this looks like in KS2

This course will be run by Emma Woodward from Whiteknights English hub.

We will be discussing:

- How you implement phonics in KS2 (who delivers and what do they deliver)
- Training you have given and how you ensure that the quality of teaching
- How you track progress and attainment

We will also be discussing effective use of TA's in phonics and reading.

## Session 2: 26 Feb 2025

### Lets think approach

This half-day taster session will provide an insight into the powerful effect of the Let's Think approach (previously known as Cognitive Acceleration) by providing an overview of the PD programme and materials and observing a live lesson.

Let's Think in English at Primary is a teaching programme created at King's College London. It consists of a suite of high-interest lessons which are intended to be used once fortnightly....cont.

These sessions will run on:

12 Nov 2024 1315–1530

26 Feb 2025 0900–1200

20 May 2025 1315–1530

Venue: Boxgrove Primary School



**Sign Up**





## SUITABLE FOR:

This network is designed for Primary Subject Leaders in reading.

Facilitated by Rachel Hughlock, Primary Practice Development Lead & Leah Crawford, Educational Consultant

**Primary**

# Reading Network

## Session 2 : Continued

They are largely oral, and based on reading authentic, unseen texts. Structured group discussion and open ended questioning enable the teacher to provide expert guidance, which improves pupils' reasoning skills. A particular feature is metacognition (structured reflection) which makes pupils more aware of their thinking processes and how they think most effectively.

This approach aligns with what has been discussed in the reading framework and subject report series in English.

## Session 3 : 20 May 2025

### Fluency

Herts for Learning Fluency Project.

- The Reading Fluency Project works to significantly improve outcomes for pupils. It is designed to help equip teachers to improve fluency and comprehension in a short space of time, across primary and secondary phases of education.
- Fluency misconceptions
- How to address fluency across the curriculum

A possible approach which focuses on fluency for 1:1 reading, which will support TA's or anyone who hears children on a 1:1 basis.

These sessions will run on:

12 Nov 2024 1315-1530

26 Feb 2025 0900-1200

20 May 2025 1315-1530

Venue: Boxgrove Primary School



**Sign Up**





## SUITABLE FOR:

This network is designed for Home School Link Workers

Facilitated by the Trust School Inclusion Team

**Primary**

**Secondary**

## HSLW Network

This session is aimed at Home School Link Workers within our schools, both Primary and Secondary.

In this hugely challenging role, this network provides an opportunity to get together with other Home School Link Workers and share best practice.

External speakers are frequently invited to the network meetings. Much of the agenda comes from the HSLW themselves.

These sessions will run on:

07 Nov 2024 1000-1130

18 Mar 2025 1000-1130

02 Jul 2025 1000-1130

Venue: Pyrford Primary School



**Sign Up**





## SUITABLE FOR:

This supportive drop-in session is aimed at PP leads within our schools, both Primary and Secondary.

Facilitated by Olivia Wernick, Trust Inclusion Lead

**Primary**

**Secondary**

## Pupil Premium Leads Drop In Session

Its the time of year to prepare your documents for the PP spend.

Please feel free to drop in for half an hour to have some support and advice with your work and the documents which need publishing for your Pupil Premium Students.

Slots will be bookable in half hour intervals.

Tea, coffee and biscuits will be provided!

This session will run on:

22 Nov 2024 30 min time slots bookable

Venue: Kings College - central team meeting room



**Sign Up**





## SUITABLE FOR:

This network is designed for SENDCOs, Assistant SENDCOS & SEND administration staff

Facilitated by Olivia Wernick, Trust Inclusion Lead

**Primary**

**Secondary**

## SENDCO Network

The meetings will be a series of opportunities for professionals working in the SEND to get together and share best practice, discuss current issues and keep up to speed with all things SEND happening in Surrey.

Key topics:

Content for these network sessions will be based upon requests from our SENDCOs at each network meeting.

We will cover specialist topics and invites visitors like we did in 2023/2024:

- Regular updates from Senior Managers in the local authority,
- Talks from Alternative Provision providers.
- Tours of our Specialist Schools in the local area
- Hearing from The National Autistic Society and what services they provide.

These sessions will run on:

14 Nov 2024 0930-1130 at Pond Meadow School  
27 Feb 2025 0930-1130 at George Abbot TBC  
22 May 2025 0930-1130 at George Abbot TBC



**Sign Up**







## SUITABLE FOR:

This network is designed for all teaching staff

Facilitated by Dave Euridge, CEO of the Inclusive Education Trust

**Primary**

**Secondary**

## De-Escalation – Tools for your Behaviour Toolkit

Managing behaviour is one of the biggest challenges in teaching. This session aims to give staff “tools for their behaviour tool kit” the more tools we have to manage behaviour the better the chance of a successful outcome

The session will cover:

- How to recognise that a situation may escalate
- What strategies can be used in different situations
- Some of the basics around behaviour management
- Top 10 tips on behaviour management
- How to build effective relationships

During this session Dave Euridge will draw on effective de-escalation strategies that staff at the IET (Inclusive Education Trust) use every day.

This session will run on:

21 Nov 2024 1600-1800

Venue: TBC



**Sign Up**





## SUITABLE FOR:

This network is designed for Designated Safeguarding Leads and Deputy Designated Safeguarding Leads.

Facilitated by Holly Wise

**Primary**

**Secondary**

## DSL Network

This network meeting is for Designated Safeguarding Leads and Deputy Designated Safeguarding Leads.

It is designed to keep DSLs and DDSLs up to date with safeguarding news and events in Surrey and Learning Partners Academy Trust. It may at times include relevant external speakers.

This network meeting will provide an opportunity to:

- Share best practice
- Discuss current issues
- Meet key individuals
- Discuss the latest safeguarding policies and procedures

These sessions will run on:

21 Nov 2024 1000–1130

27 Mar 2025 1000–1130

09 Jul 2025 1000–1130

Venue: Pyrford Primary School



**Sign Up**





## SUITABLE FOR:

This network is designed for teachers, SENDCOS, TAs & LSAs

Facilitated by Jane Brown, The Park School

**Primary**

**Secondary**

## Dyslexia in the Classroom

Jane Brown, from The Park School, will be delivering an information session on Dyslexia.

Jane has a wealth of knowledge in this field, she is English and Phonics lead at a Special School in Woking, working with secondary pupils with moderate learning difficulties.

The session aims to provide you with a deeper understanding of dyslexia, as well as giving you strategies to best support your pupils.

This session will run on:

28 Nov 2024 1300-1530

Venue: Pyrford Primary School



**Sign Up**





## SUITABLE FOR:

This training is designed for for all teachers within primary schools

Hosted by the English Leads within the venues

**Primary**

## Writing Moderation

These sessions provide a valuable platform for qualifying judgments, discussing uncertainties, and enhancing understanding of students' progress.

Hosted by the Trust's primary schools, the moderation sessions are integral to fostering a collaborative and supportive environment. The termly exemplars for each year group, along with the Trust's Writing Framework, will ensure that judgments are consistent and derived from an agreed-upon approach.

This structured process aims to improve the accuracy and reliability of writing assessments, ultimately benefitting both educators and students.

***Please note each session will start promptly at 1600***



**Sign Up**

60

These sessions will run on:

04 Dec 2024 1600-1700

12 Mar 2025 1600-1700

04 Jun 2025 1600-1700

Venues:

EYFS & Nursery – Stoughton Infant & Nursery School

Year 1 & 2 – Pirbright Primary School

Year 3 & 4 – Loseley Fields Primary School

Year 5 & 6 – Guildford Grove Primary School





## SUITABLE FOR:

This training is designed for all teachers within primary schools

Facilitated by Rachel Hughlock, Primary Practice Development Lead

**Primary**

# Mastering Non-Fictional Writing

Writing in non-fiction is a distinct skill set compared to fiction, characterized by unique language patterns that differ significantly from everyday speech. This session will delve into various strategies designed to scaffold learning and help develop the necessary language patterns for crafting non-fiction genres. Participants will explore techniques to structure their writing effectively, ensuring clarity and coherence in conveying factual information.

Additionally, we will introduce a novel approach to reduce cognitive overload when writing non-fiction: fictitious non-fiction. This strategy blends elements of fiction with non-fiction, providing a creative yet structured way to ease the complexities of non-fiction writing. Through these methods, attendees will gain practical tools to enhance their non-fiction writing skills, making their work both engaging and informative.

This session will run on:

05 Dec 2024 1315-1600

Venue: Boxgrove Primary School



**Sign Up**





## SUITABLE FOR:

This network is designed for teachers, SENDCOS, TAs & LSAs.

Facilitated by Claire Pascolutti, Loseley Fields Primary School

**Primary**

**Secondary**

## Colourful Semantics

This session is an introduction to colourful semantics and how it can support sentence structure for writing.

With a focus on how to support the individual SEND child within a mainstream classroom. Sharing examples and best practice from a specialist LAN centre.

This session will run on:

15 Jan 2025 1315-1515

Venue: Pyrford Primary School



**Sign Up**



# DT Network

## Morning session : 0900-1215

We will have online training for Tinkercad from Create Education. It's a free web app that's great for 3D design, electronics, and coding. Tinkercad is super easy to use, making it perfect for beginners and especially good for primary school kids. This session will help you get the hang of creating and working with 3D models, sparking creativity and a love for STEM from an early age.

## Afternoon session : 1300-1600

Susie McAuley from Inventors and Makers will be delivering our session on micro:bits

- 1.What is a micro:bit and how does using it fit into the DT and Computing curriculums.
- 2.Inputs, outputs and programming a micro:bit.
- 3.Using a micro:bit to monitor temperature, including how you can use it to obtain data the children can read and interpret.
- 4.Creating a control program for a topic-based challenge.

This session will run on:

13 Feb 2025 0900-1600

AM Session - Tinkercad

PM Session - Microbits

Venue: George Abbot TBC



Sign Up



## SUITABLE FOR:

This training is designed for DT leads, Computing leads and teachers teaching Tinkercad and Microbits

Facilitated by Rachel Hughlock, Primary Practice Development Lead, Create Education & Inventors & Makers

Primary

## Secondary English – Reading Focus

### Session 1: 26 Feb 2025

#### 'Let's think' approach

This half-day taster session will provide an insight into the powerful effect of the Let's Think approach (previously known as Cognitive Acceleration) by providing an overview of the PD programme and materials and observing a live lesson.

Let's Think in English at Secondary is a teaching programme created at King's College London. It consists of a suite of high-interest lessons which are intended to be used once fortnightly.

They are largely oral, and based on reading authentic, unseen texts. Structured group discussion and open ended questioning enable the teacher to provide expert guidance, which improves pupils' reasoning skills. A particular feature is metacognition (structured reflection) which makes pupils more aware of their thinking processes and how they think most effectively.

These sessions will run on:

26 Feb 2025 1300–1600 at  
George Abbot

20 May 2025 1315–1530 at  
Boxgrove Primary School



Sign Up

### SUITABLE FOR:

This network is designed for English Subject Leads & Secondary English teachers

Facilitated by Leah Crawford, Educational Consultant

Secondary







## SUITABLE FOR:

This network is designed for English Subject Leads and Secondary English teachers

Facilitated by Leah Crawford, Educational Consultant

**Secondary**

# Secondary English - Fluency

## Session 2: 20 May 2025 Fluency

- Herts for Learning Fluency Project The Reading Fluency Project works to significantly improve outcomes for pupils. It is designed to help equip teachers to improve fluency and comprehension in a short space of time, across primary and secondary phases of education.
- Fluency misconceptions
- How to address fluency across the curriculum
- A possible approach which focuses on fluency for 1:1 reading, which will support TA's or anyone who hears children on a 1:1 basis.

These sessions will run on:

26 Feb 2025 1300-1600 at George Abbot TBC

20 May 2025 1315-1530 at Boxgrove Primary School



**Sign Up**





## SUITABLE FOR:

This network is designed for History Leads

Facilitated by Tom Hunt & Natalie Hind, Boxgrove Primary School

**Primary**

## History Network

This history network focuses on the role of sources in the teaching of history, and how to use historical sources in ways that are engaging and accessible for all students.

Through practical examples and interactive activities, educators will learn techniques to integrate primary and secondary sources into their lessons effectively, making history more relatable and compelling for learners of all backgrounds.

This approach not only enriches students' understanding of historical events but also enhances their critical thinking and analytical skills.

This session will run on:

06 Mar 2025 1315 -1530

Venue : Boxgrove Primary School



**Sign Up**





## SUITABLE FOR:

This network is designed for Art Leads

Facilitated by  
Alix Blakeway, Art Lead at  
Boxgrove Primary School

**Primary**

## Art Network

### Exploring Painting in the Primary Phase EYFS–Yr6

This course explores painting from the Early Years Foundation Stage (EYFS) to Year 6, combining practical elements with theory. Participants will delve into various painting techniques, from technical precision to expressive forms, using watercolors and acrylics. Practical activities include color mixing, layering paints, and experimenting with different surfaces.

Pedagogy emphasises exploratory painting and discovery, encouraging creative and emotional expression. You will learn how to apply these methods within your school, ensuring all children benefit from painting. You'll also try painting exercises yourself, gaining starting points to use with your class or colleagues. By the end, you'll feel informed about different types of paint and how they can be combined and layered, appreciating the value of exploratory painting.

This session will run on:

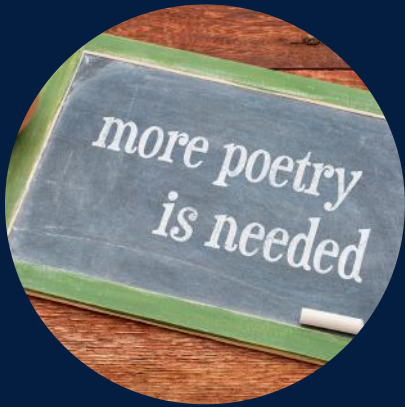
17 Mar 2025 1315 – 1600

Venue : Boxgrove Primary  
School



**Sign Up**





## SUITABLE FOR:

This network is designed for all teaching staff

Facilitated by Rachel Hughlock, Primary Practice Development Lead

**Primary**

# Inspiring Young Poets – the Teaching of Poetry

Teaching poetry in KS2 is essential for enhancing students' writing abilities across all genres by incorporating rich, figurative language and vivid imagery.

For developing greater depth writers, poetry is an essential skill as they can use poetic forms as a tool when writing fiction and non-fiction to enhance their composition and effect.

By engaging in activities that stimulate the imagination, students can strengthen their ability to write evocatively and effectively. Immersive experiences further deepen students' understanding and appreciation of poetry, making the learning process both enjoyable and impactful.

Scaffolding this learning involves modeling poetic techniques, guided practice, and we will look at strategies to support all learners develop confidence and competence in figurative writing.

This session will run on:

25 Mar 2024 1315-1600

Venue: Boxgrove Primary School



**Sign Up**





## SUITABLE FOR:

This training is designed for all teaching staff

Facilitated by  
Kate Charles, Area Schools  
Officer for North West &  
South West

**Primary**

**Secondary**

# Challenging Conversations

Building positive relationships between parents/carers and schools contributes to positive outcomes for children and young people. This includes improved attainment and achievement, improved attendance, reduced exclusion, improved child-teacher relationships and an improved school community environment/culture

Conflict, if not properly managed, can undermine relationships quickly and sometimes permanently, it can also take an emotional and physical toll.

Our training offers a framework to understand and manage conflict in a constructive, safe and confident manner.

We hope you will have some fun whilst gaining a better understanding of behaviour, our reaction to conflict and leave with a strategy to managing distressing situations in the future.

This session will run on:

28 Apr 2025 1315-1530

Venue: Pyrford Primary School



**Sign Up**





## SUITABLE FOR:

This network is designed for teachers, TAs, LSAs, DSLs, DDSLs & HSLWs

Facilitated by  
Liz Langley, Primary Mental Health Worker

**Primary**

**Secondary**

## Supporting Students with Self Harm

The session will be delivered by Liz Langley, highly experienced in working with young people who are experiencing difficulties with their wellbeing.

Liz will facilitate a discussion based session, in which we will consider the reasons why children may harm themselves.

We will explore:-

- self harm and neurodiversity
- build confidence in having difficult conversations with students
- identify positive responses to incidents of self harm,
- have a practical experience of using safety plans
- consider the emotional impact of self harm on staff.

*Prior to the session you will be asked for questions you would like incorporated.*

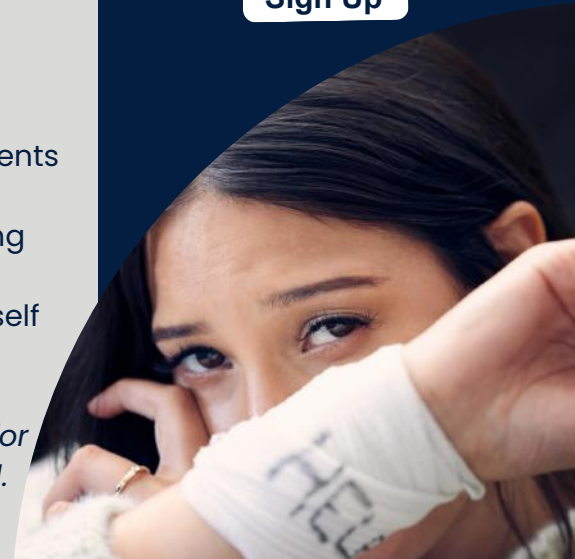
This session will run on:

07 May 2025 0900-1200

Venue: Tillingbourne Junior School



**Sign Up**





SCHOOLS TOGETHER  
SUCCESS NOW

NPQs are the most widely recognised qualifications in the education sector for current and aspiring leaders.

STSN has successfully delivered NPQs to over 3500 leaders since 2013. It has worked with school leaders from 35 Local Authorities in the South East and East of England and London. The quality of its courses and delivery has been rated exceptional for the DfE's Quality Assurance Agent.

## National Professional Qualifications

There are ten NPQ programmes to support aspiring and established leaders at every level. These NPQs either support the development of specialist knowledge and skill or focus on leadership development at a range of levels.

### Specialist NPQs:

- NPQ in Leading Teaching (NPQLT)
- NPQ in Leading Behaviour and Culture (NPQLBC)
- NPQ in Leading Teacher Development (NPQLTD)
- NPQ in Leading Literacy (NPQLL)
- NPQ in Leading Primary Maths (NPQLPM)

### Leadership NPQs:

- NPQ in Senior Leadership (NPQSL)
- NPQ in Headship (NPQH)
- NPQ in Executive Leadership (NPQEL)
- NPQ in Early Years Leadership (NPQEYL)
- NPQ for SENDCoS (NPQSENDCO)

Limited scholarship funding is available for the following three NPQs:

- NPQLPM
- NPQH
- NPQSENDCo

In addition, scholarship funding is available for any NPQ for schools with a specific cohort.

For LPAT schools this is for teachers at Guildford Grove, Kings College and Loseley Fields schools only

Further details on available funding can be found in the 'Funding' tab of each individual programme page on the website [www.stsn.co.uk](http://www.stsn.co.uk)

For further information please contact Andrew Roach on [CPLD@learningpartners.org](mailto:CPLD@learningpartners.org)

**Primary**

**Secondary**



## SUITABLE FOR:

The Schools Alliance for Excellence has a range of training & networking opportunities for all.

**Secondary**

## SAFE

Secondary Schools have a subscription to SAFE - the Schools Alliance for Excellence, for the this academic year.

This enables access to a range of training courses & networking opportunities free of charge.

Please liaise with your Teaching & Learning Lead for further information.

To browse all that SAFE has to offer please click below:-

**CLICK HERE**



Training courses & networking opportunities run throughout the academic year both virtually and at various venues.







## SUITABLE FOR:

This training is designed for LPCAT Schools – Learning Partners Church Academy Trust

**Primary**

## SIAMS Training & Support

The Diocese of Guildford offers SIAMS Training and Support for all LPCAT Learning Partners Church Academy Trust Schools.

Training on all aspects of the SIAMS Framework & how to prepare for inspection is available for Senior Leaders, RE Subject Leaders & Governors.

Further information can be found here:- [CLICK HERE](#)

The Elevate Partnership package is also available providing access to system leaders & practitioner consultants equipped to provide consultancy in

- SIAMS
- Christian Distinctiveness
- RE for Church Academies
- RE 2023–2028 Surrey Agreed Syllabus

To explore this opportunity further

[CLICK HERE](#)





# NOTES

Handwriting practice area with ten horizontal dashed lines.

Contact us - [CPLD@learningpartners.org](mailto:CPLD@learningpartners.org)



# NOTES

---

---

---

---

---

---

---

---

---

---

---

---

Contact us - [CPLD@learningpartners.org](mailto:CPLD@learningpartners.org)

# Leading schools where children thrive

Subscribe to  
the calendar



[www.learningpartners.org](http://www.learningpartners.org)