



HOLO Steel

Guide to holographic hot stamping on metal

Introducing HoloSteel by SONOCO

Transform your metal packaging with HoloSteel, a cutting-edge hot-stamping technique that adds mesmerising holographic foil to your designs.

Developed by Sonoco Metal Packaging, HoloSteel offers:

- **Eye-catching packaging**

Make your products stand out on the shelf with a captivating look.

- **Great promotional opportunities**

Enhance your brand's visibility and appeal.

- **Differentiation and added value**

Set your products apart from the competition.

- **Anti-counterfeiting benefits**

Protect your brand with advanced security features.



Elevate your
packaging with
HoloSteel by Sonoco,
where sustainability
meets elegance.

Applications

How does HoloSteel technique work?

A hot printing plate is applied onto a flat metal sheet. The pressure applied allows the foil to stick to the metal and create the desirable holographic effect.

HoloSteel technique can be applied to a variety of tin shapes: round, oval, square, rectangular, octagonal, and more! Discover our full range via QR code.

At Eviosys, we have advanced our technology to apply HoloSteel directly onto the finish varnish, enabling any holographic effect to be implemented on larger surfaces.



Better Packaging. Better life.®

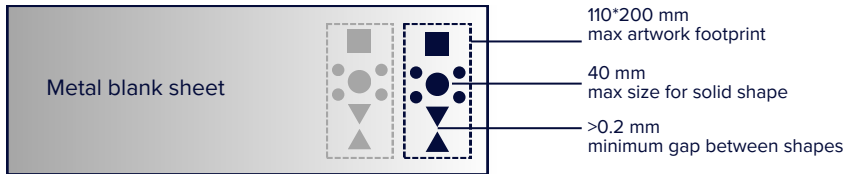


How to create a design with HoloSteel

HoloSteel allows artwork (shapes, letters, and lines) to be applied as is, or inverted.





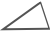
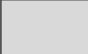

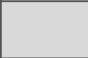

The maximum artwork footprint is 110 X 200mm and can be applied as a repeated pattern on the same metal sheet.

Our pre-press team is available to guide and support you during your artwork development to ensure an optimal design result enhancing functionality and aesthetic appeal of your packaging.



Get in touch with us



		MIN	MAX	SHAPE
DISC Positive	Background colour light	2mm	40mm	
	dark	2mm	20mm	
DISC Negative		8mm	40mm	
ANGLE Positive		30°	150°	
ANGLE Negative		6°	180°	
TEXT Positive	Times	5pts	9pts	5pts 9pts
TEXT Negative	Times	9pts	12pts	12pts 9pts
LINE THICKNESS		0.2mm	40mm	

Recommendations

This brochure contains a selection of foil patterns from our comprehensive HoloSteel range. Each design can be customized with your logo to perfectly match your brand's identity.

All our metal packaging solutions are 100% recyclable. Combine eye-catching design with sustainability together with Eviosys.

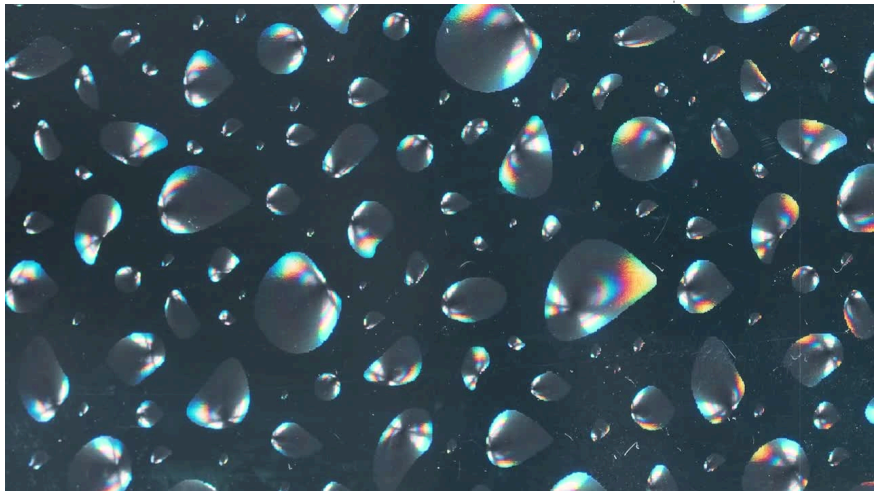
Contact us to discuss your unique design needs and explore the latest pattern options available.



HOLO Steel Aquadrops

Available in vertical
and horizontal

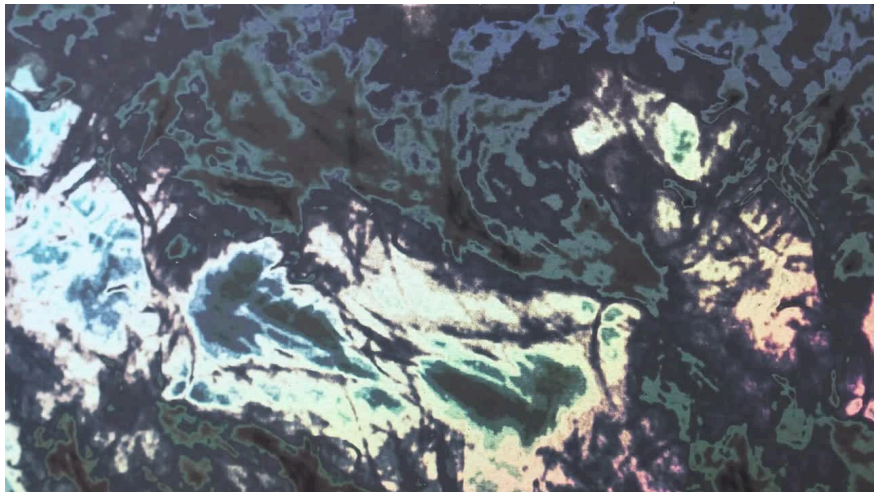

HOLO Steel
Aquadrops



HOLO Steel Velvet

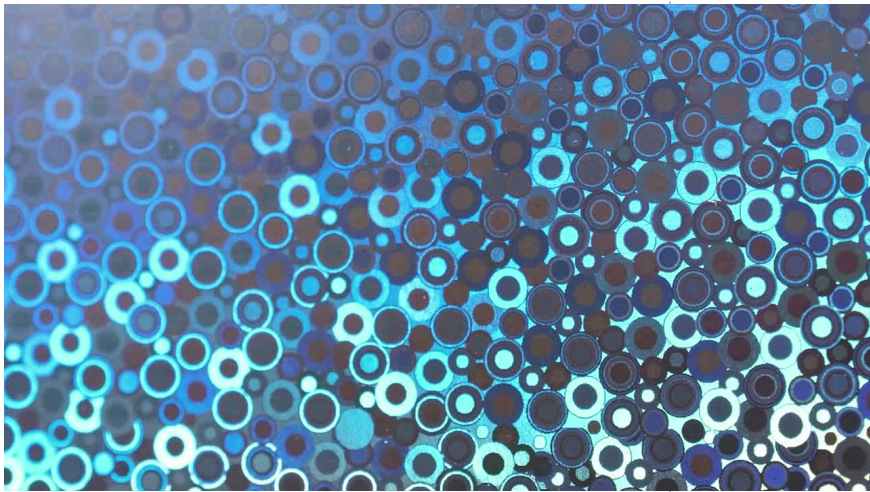
Available in vertical
and horizontal


HOLO Steel
Velvet



HOLO Steel Marbles

Available in vertical
and horizontal



HOLO Steel

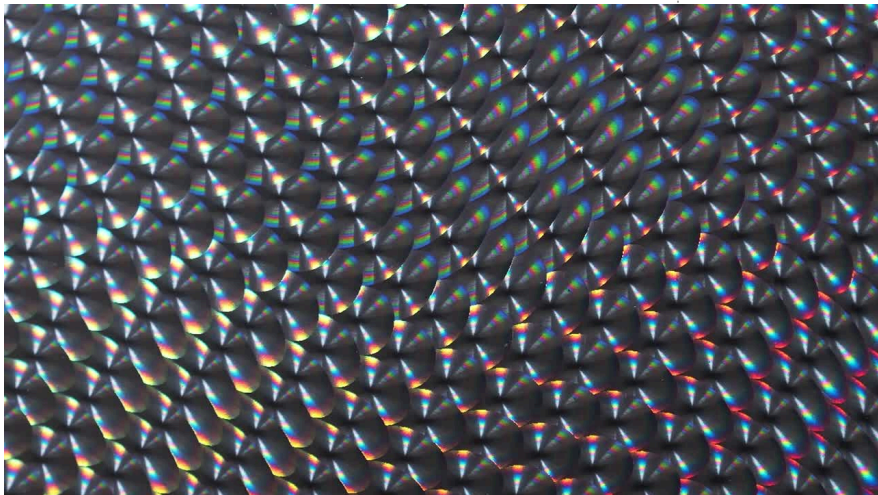
Stella

Available in vertical
and horizontal



HOLO Steel Reptile

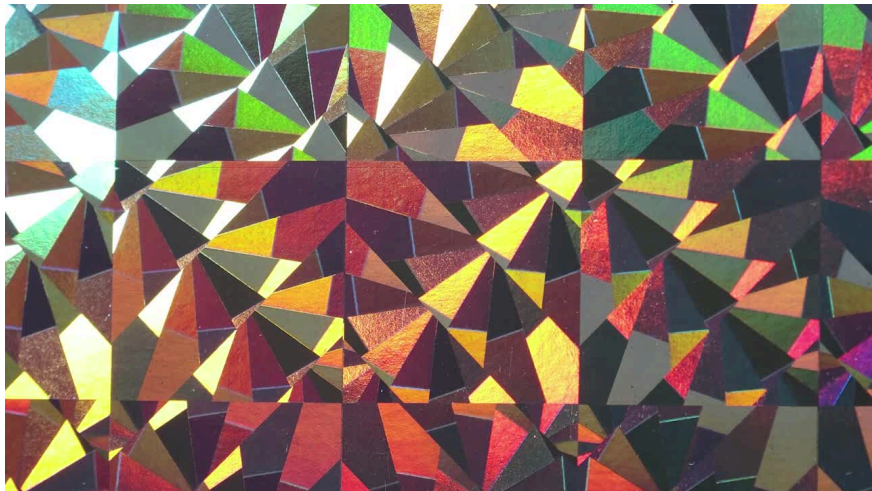
Available in vertical
and horizontal



HOLO Steel

Reflex

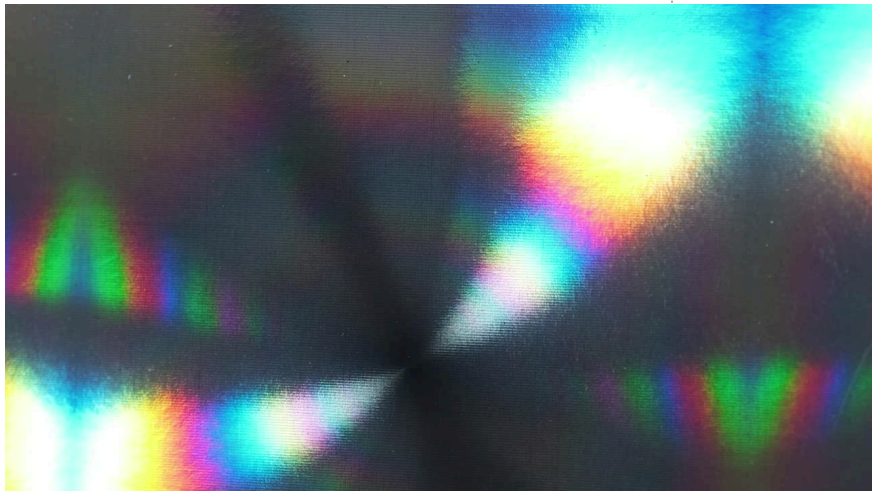
Available in vertical
and horizontal



HOLO Steel Space

Available in vertical
and horizontal


HOLO Steel
Space





Better Packaging.
Better Life.®

www.sonoco.com/metalpackagingEMEA

