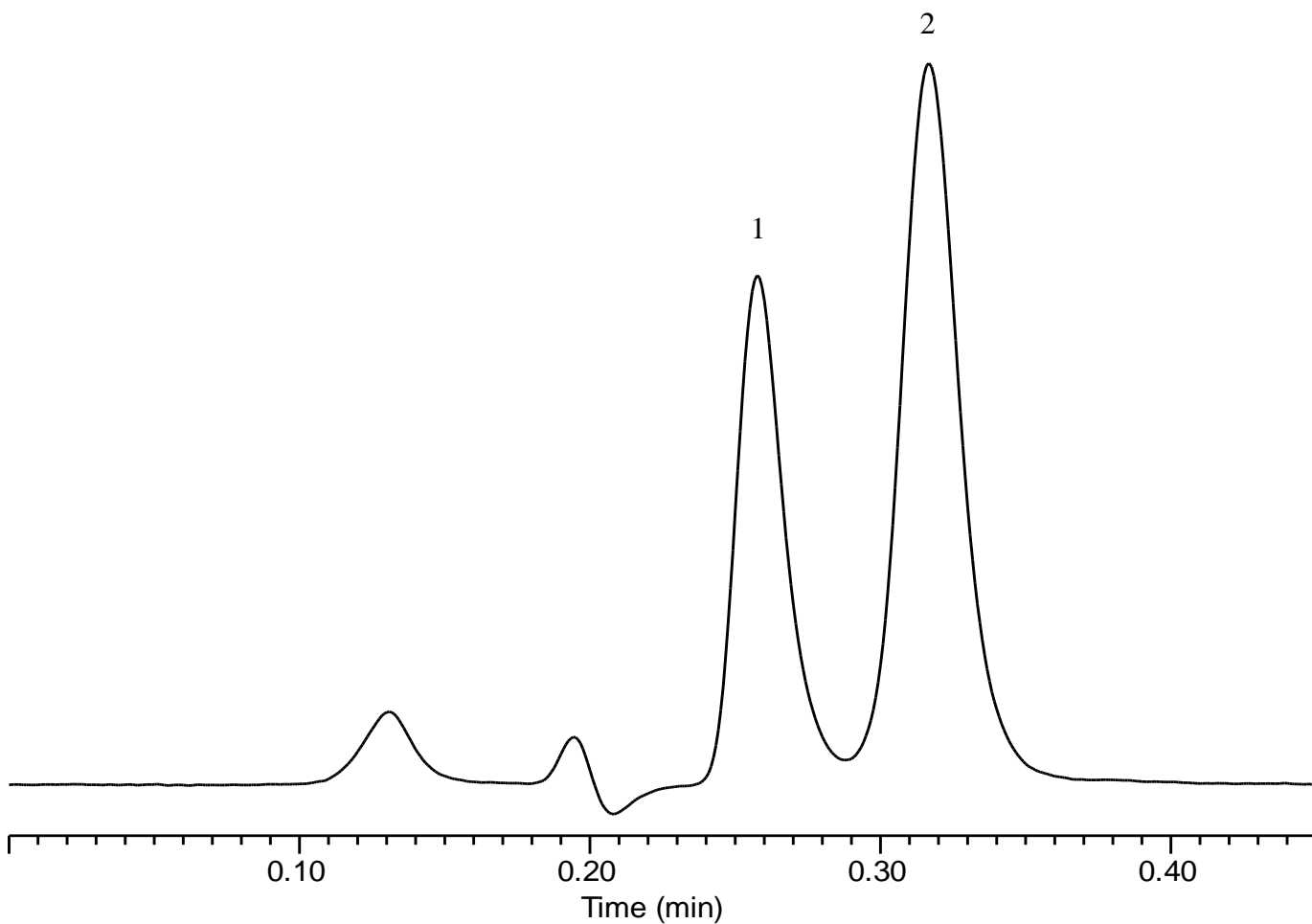


# InertSearch™ for LC

Inertsil™ Applications

## Analysis of Acephate and Methamidophos

Data No. LB598-0954



### Conditions

**Column** : MonoSelect C18 for HTS (20 x 2.1 mm I.D.)

**Column Cat. No.** : 5020-10811

**Eluent** : A) CH<sub>3</sub>CN  
B) H<sub>2</sub>O  
A/B = 5/95, v/v

**Flow rate** : 0.3 mL/min

**Col. Temp.** : 40 °C

**Detection** : UV 215 nm

**Injection Vol.** : 1 μL

**Sample** : Standard

### Analyte:

1. Methamidophos 100 mg/L  
2. Acephate 100 mg/L

\* An LC system optimized for high-throughput analysis was used.