

Kitchen Inspiration

Discover RK-Tec, the Unique & Exciting Approach to Kitchen Design

Project Advice from
The Kitchen Professionals



Design
Products
Installation
Your Planning Guide

+ REAL KITCHEN CASE STUDIES



Less Restrictions,
MORE FREEDOM



Seamlessly Integrated

The NEFF 2-in-1 Venting Hob can be fitted in an island or against a wall, offering powerful extraction seamlessly integrated with a FlexInduction Hob. Now featuring the new Frying Sensor Pro with 11 pre-set power levels for consistent temperature control. Simply select the right temperature for your dish and let the Hob maintain that temperature for you. The outcome; no burning, better results and stress-free cooking.

Introduction

Welcome to Kitchen Inspiration

The RK-Tec initiative achieved a number of notable milestones in 2023/24: - 15 years since its formation, this the 10th edition of Kitchen Inspiration, a decade since engaging with Potton's innovative Show Centre and Self Build Academy, and to mark the occasion an RK-Tec founding member (James Herriot) has written a book 'Insights to Kitchen Design' (40+ Years in the World of a Design-led Kitchen Specialist).

'Insights to Kitchen Design' epitomises and embraces the RK-Tec members' mantra that successful design-led kitchen projects encompass 3 vital elements: Great Design, Great Products and Great Project Management. Kitchen Inspiration utilises various extracts and elements of the book to demonstrate and highlight the importance of ensuring all are incorporated into your dream kitchen.

It may help to explain James' credentials in relation to the design-led kitchen specialist market. Callerton the kitchen furniture manufacturing company he jointly founded with a friend, recently celebrated their 40th birthday. As you will learn he possesses a broad and unique insight to his craft.

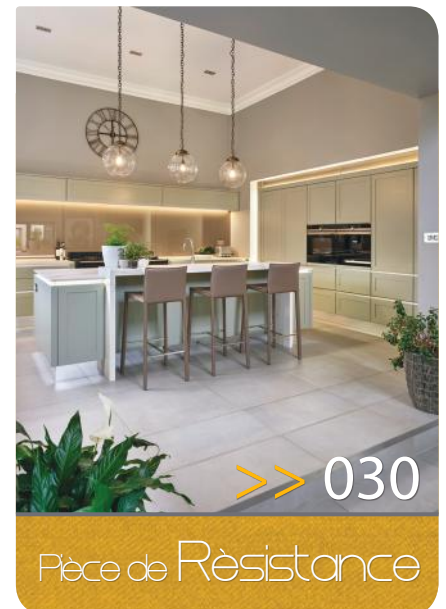
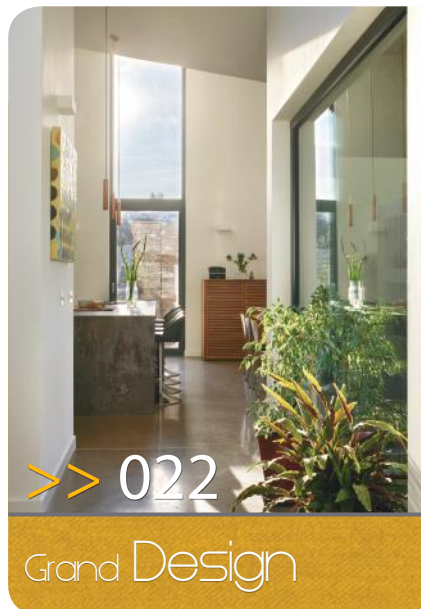
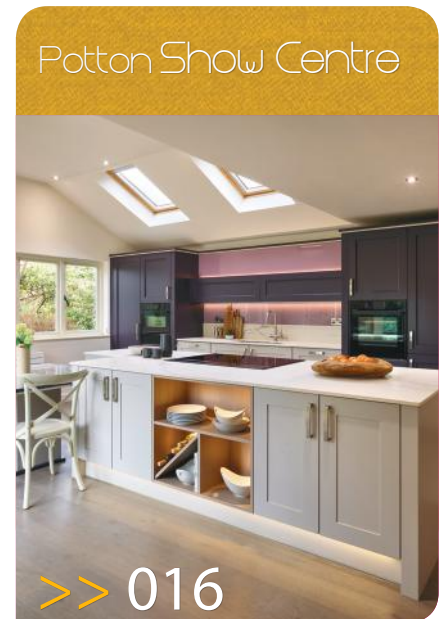
RK-Tec stands for revolutionary kitchen techniques and Kitchen Inspiration aims to provide an understanding as to what's involved and required when creating a successful kitchen project. Recognising that the many wide ranging products incorporated within a kitchen are more powerful when combined together into the finished article, than individually, a founding RK-Tec concept.

A further important aspect of the 10 leading brands involved in the RK-Tec initiative is the significance they place on training and expansion of knowledge in relation to their wide and diverse product portfolios. How individual elements integrate with one-another being a valued ingredient.

Kitchen Inspiration aims to provide an insight to what's involved when embarking on your journey.

From all of the team at RK-Tec

Enjoy



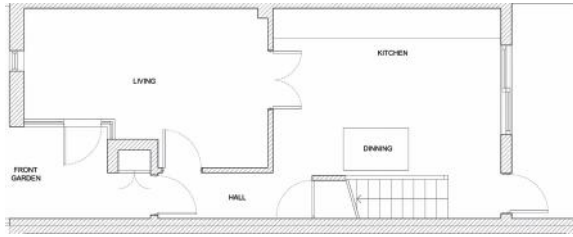
Contents

- >> Page 4 - Great Design
- >> Page 6 - Great Products
- >> Page 8 - Great Project Management
- >> Page 10 - Kitchen Spotlight - Sinks & Taps

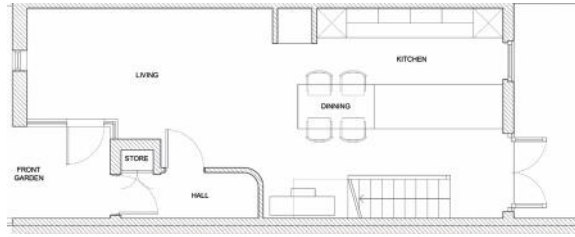
- >> Page 12 - Party Central
- >> Page 16 - Potton Show Centre
- >> Page 22 - Grand Design
- >> Page 26 - Displays & Studios

- >> Page 28 - Kitchen Spotlight - Space Management
- >> Page 30 - Pièce de Résistance
- >> Page 34 - Knowledge is Power

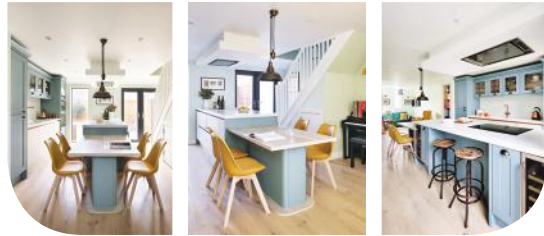
GREAT DESIGN DIMINUTIVE DIMENSIONS



Existing Design: A traditional layout featuring distinct, separate areas for the kitchen & living space.



Revitalised Open-Plan Living: A beautifully redesigned kitchen seamlessly integrates with the living area, tailored to meet the client's specific needs & preferences.





“The importance of design in a kitchen encompasses so much more than just the furniture, appliances, sinks, taps, & worksurfaces, etc.”

Callerton Kitchen: Drift Blue and Matt Mussel doors paired with White Halifax Oak & copper profiles for a modern, elegant touch.

Diminutive Dimensions is a kitchen case study featured within ‘Insights to Kitchen Design’ and an excellent project to demonstrate the importance of design and how this encompasses so much more than the furniture, appliances, sinks, taps, worksurfaces, etc. Each an important element but there is more to engage with to ensure the form and function of a kitchen fulfils its true potential.

Examining how best to utilise the attributes of a property to satisfy the needs and requirements of a client is the raison d’être of design-led kitchen specialists. This particular project a case in point. Diminutive Dimensions relates to a ground floor of less than 30 square metres and comprising a living room, separate kitchen and a passageway; which without a radical makeover does not provide a lot of scope.

As can be deduced from the original ground floor drawing and the designer’s alternative proposal to create one large, open-plan space; the options and opportunities for the kitchen grow exponentially. The inclusion of a patio door and a long narrow fixed light window looking onto a paved patio area creates the illusion of additional space and adds light and depth to the equation.

You will have to read the ‘Insights’ case study to comprehend the needs and requirements of the particular couple who undertook this project. Two ‘must-have’ items stood out; an electric piano and a wine fridge. As you can see these were catered for along with a myriad of other requests.

The point to be made is everyone’s priorities for a kitchen are likely to differ, hence engaging a design-led kitchen specialist to establish these, is an important part of the journey. But extracting the maximum a property/space has to offer opens up a wider range of options and opportunities.

Aptly demonstrated via the two alternative 3D CAD designs utilising the same footprint. <<

Diverse Design: Showcasing the potential of modern design, these two distinct concepts for the same space highlight the diversity & innovation achievable in contemporary interiors.



GREAT PRODUCTS

ROLE REVERSAL



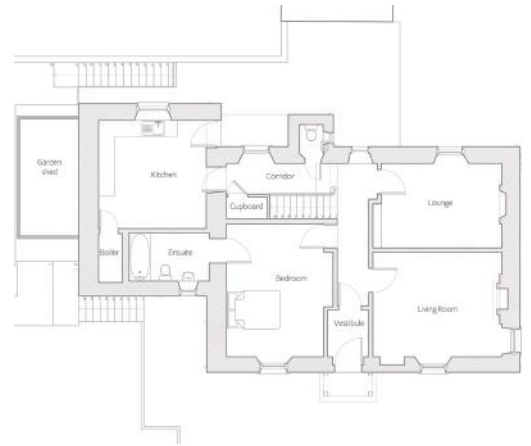
Role Reversal' is a further 'Insights to Kitchen Design' case study which once again encapsulates the importance of design and how reconfiguring the layout of a property can bring about spectacular results, in this example the kitchen is now in what was the property's guest bedroom.

Maximising kitchen design and location to meet client needs is key. Using tools like Callerton's Design Criteria, designers can align with client wishes and product choices.

Establishing and identifying as much detail as to the aspirations and products a client desires in relation to functionality and aesthetics, is an important piece of the design process. A design-led kitchen is a long-term investment so expending time and energy on this important element undoubtedly pays dividends over the lifetime of what is likely to be the hub of your home.



Callerton Kitchen: Dried Lawn & Okra paint hues infuse with the Balham 70 door range with natural warmth & timeless charm.



Original Layout: The kitchen, isolated at the back, lacked integration with the home's overall flow.



Post-Renovation: A modern extension harmoniously integrates the kitchen into the heart of the home's living space.



Traditional Meets Modern: A glass extension expands the kitchen & dining space into the garden.

“A design-led kitchen is a long-term investment, making it crucial to spend time and energy on detailing functionality & aesthetics”

‘Role Reversal’ exemplifies the importance of establishing design criteria and client-specific product choices for a new kitchen.

Key specified items include: Shaker painted furniture with stand-out handles, mood enhancing lighting, quartz worksurfaces, a Belfast sink, brass tap, two ovens, halogen hob, effective extraction, fridge/freezer and dishwasher – even stating the appliance manufacturer (NEFF). Feedback such as this is of major benefit to designers.

The plethora of products available in today's market is vast and to the uninitiated it is frankly mind-boggling. When choosing the products you wish to incorporate into your dream project, remember the importance of longevity and functionality. Engaging someone to assist is highly recommended.

A design-led kitchen specialist with the backing and training of the RK-Tec membership is well placed to guide you in relation to: quality, performance, efficiency, sustainability, value-for-money, service back-up and style. <<

GREAT PROJECT MANAGEMENT RURAL RETREAT



Rustic Originality: The initial kitchen space, defined by its characteristic brick peninsula.



Renovation in Progress: A snapshot of transformation, old structures give way to new beginnings.



Timeless Elegance: This 20-year-old Callerton kitchen boasts oak doors with curved deco features, maintaining its beauty & grace through the years.



Preparation Phase: First fix successfully finished, setting the stage for the laying of the floor, decoration & the arrival of the new kitchen furniture.

We've established the significance of Great Design and Great Products. The following 'Insights to Kitchen Design' case study (Rural Retreat) truly embodies both elements, as well as epitomising the importance of the third and vital ingredient: Great Project Management.

Rural Retreat involved the successful reconfiguration of what was a less than satisfactory layout, hence it ticks the 'design box' in a variety of ways. In relation to products, this kitchen is approaching 20 years old and retains the original furniture, appliances, sinks, taps and worksurfaces; which aptly demonstrates that choosing products wisely, will inevitably prove an excellent long term investment.

“*Exceptional design & products require meticulous & professional project management to avoid disappointment*”

The photography utilised in Kitchen Inspiration and Insights involved a re-shoot of the project late last year. The only upgrades from the original being the handles, modern lighting and redecoration (the Amtico floor is also two decades old). This a 1st class example of Great Design and Great Products.

The design and products of a project may be exceptional, but without a meticulous and professional approach to project management the end result can lead to disappointment. The importance of this aspect is often overlooked and something 'Insights to Kitchen Design' aims to highlight.

Rural Retreat is an example of ensuring the design and product elements are correct, with the added necessity of everything being carefully managed from start to finish. The plans and imagery help to demonstrate the process and importance of ensuring everything is in place and correct sequence, prior to the installation of the kitchen: first fix electrics, water, waste, heating, extraction, etc.

A well-worn Callerton quote: "You'd never put your new dining room suite into a room under construction". Kitchen furniture, appliances, worksurfaces and all the many other facets involved in a project require to be treated with the same respect. Engaging a professional who knows their craft and meticulously manages a project pays dividends and saves stress, delay and expense. <<

Kitchen Spotlight

Sinks & Taps

Elevate your kitchen experience with Franke's new Maris Water Hub tap.

Designed to elevate the kitchen experience, Franke's new Maris Water Hub instant boiling water tap draws on the brand's 100 years of expertise in sink and tap craftsmanship. This flagship range combines sought-after features to bring efficiency and style to kitchen routines, whether cooking up a culinary masterpiece or crafting the perfect beverage.

Available in the classic J Spout style in the three best-selling finishes of Chrome, Decor Steel, and Matt Black, Maris Water Hub features user-friendly operation, a rotatable boiling knob for effortless boiling water function and safety shut-off.

The range offers a 3-in-1 mechanical model, boasting a 4L stainless steel water tank, or electronic model with either a 4L or 7L tank. With the electronic tap customers can elevate their experience to 4-in-1 functionality with the optional filtration kit offering cold filtered water, in addition to hot, cold and 100°C boiling water.

The premium Pro M Filter ensures water purity, reducing limescale, stabilising minerals, and eliminating chlorine and unwanted odours. Water waste is reduced by up to 50% with the stepped lever, while the temperature limiter provides more control over water temperature.

Maris Water Hub has a two-year warranty, with optional an annual maintenance service and is priced at RRP inc. VAT from £1140 for the Chrome 3-in-1 mechanical model. The optional Filtration Kit is priced at RRP inc. VAT £265. <<

Designed to elevate the kitchen experience, Franke's new Maris Water Hub instant boiling water tap draws on the brand's 100 years of expertise'

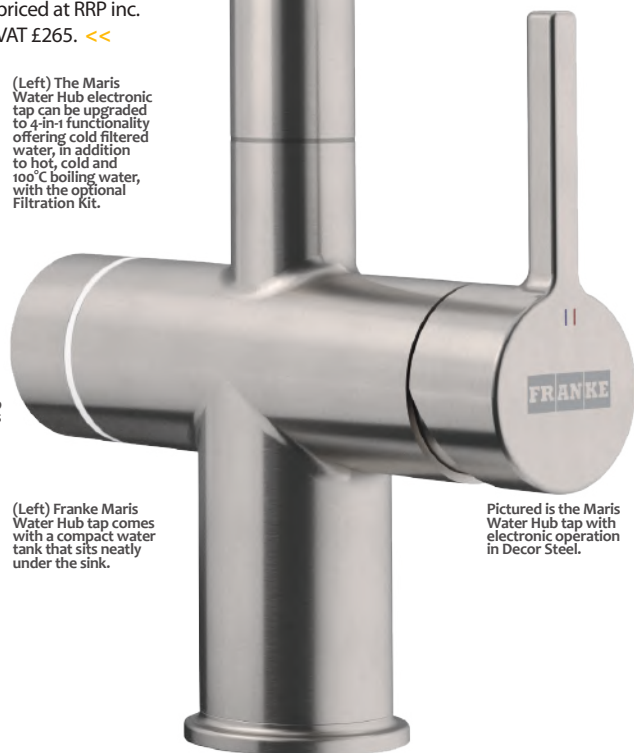


(Left) The Maris Water Hub electronic tap can be upgraded to 4-in-1 functionality offering cold filtered water, in addition to hot, cold and 100°C boiling water, with the optional Filtration Kit.

(Left) Pictured is the Maris Water Hub Electronic tap in Matt Black which is priced from RRP inc. VAT £1,520.



(Left) Franke Maris Water Hub tap comes with a compact water tank that sits neatly under the sink.



Pictured is the Maris Water Hub tap with electronic operation in Decor Steel.

Contact Franke:
0161 436 6280 or www.franke.com



LIGHTING MADE SIMPLE.



If there is one room in the home where getting the lighting absolutely right, it's the kitchen.

Functional under cabinet illumination adds essential task lighting to create an efficient work space.

If natural light is limited, specially designed lighting in drawers and cabinets will brighten up the room.

Bring character and depth to the kitchen by introducing innovative mood lighting.



sensio[®]

Tel: +44 (0)1977 522020

Email: info@sensiolighting.com

Web: sensiolighting.com



PARTY

CEN- TRAL

I

nsights to Kitchen Design' features 20 diverse kitchen projects and 40 (two per case study) alternative and thought provoking designs utilising the originals foot-print. Due to the size of the publication 'Kitchen Inspiration' can only provide a brief insight to these, via précised versions of three such projects. To learn more and view the full complement of 'Insights' kitchens requires referring to the book.

James Herriot's aim was to highlight the skill, ability and talent of designed kitchen specialists. Hence the reason for each of the case-studies being written from the designer's point of view, to demonstrate how they go about working with clients and turning their dream to reality.

Andrew, the designer of this impressive example hails from the West Midlands (England) and ably highlights all that's involved in creating a kitchen to fulfil the needs and requirements of his clients. The title 'Party Central' aptly demonstrates ensuring designers truly comprehend the wishes of their clients. In this particular instance, of major importance: the creation of an entertainment space. >>

Callerton Kitchen: Balham 70 doors, painted in Inky Green, complemented by high-end Siemens appliances, including an induction hob, combi microwave oven, single oven, warming drawer, and a spacious full-height fridge & freezer.



“*Insights to Kitchen Design features 20 diverse kitchen projects & 40 alternative designs utilising the original foot-print*”



A quote from Andrew sets the scene: "Our sociable clients love entertaining and were set on a soft industrial vibe, with a modern twist. They were keen that the kitchen was not just filled with furniture, and expressed a love of symmetry. Their dream dining table had been shortlisted, and we utilised this as a starting point. They also desired the incorporation of a brick accent."



Elegance in Open Space: Luxurious simplicity with a touch of industrial chic.



A further enlightening comment from Andrew provides an insight when garnering the necessary information required to ensure the end result ticks all his client's boxes. "I want them to feel they are my one and only client. To listen intently (two ears, one mouth) is crucial, as it enables me to understand how they currently live, and how they want to live going forward. From this I can develop solutions to ensure this is incorporated into the proposed scheme."



Alternative Design One: A transformative material change in the kitchen, blending contemporary timber-effect doors & modern elements, creating a unique ambience.

As previously stated the available space barely scratches the surface as to the intricacies of this project. Andrew's answer to the question as to when he became involved provides some further understanding and perception as to how he went about tackling this particular case study: -

"The refurbishment involved a full-width extension to the rear of the property, incorporating three sets of Crittall doors overlooking the mature gardens (with pool). The Crittall glazing worked beautifully as a launch point for creating that all-important soft industrial vibe and, together with some huge roof lanterns, helped set the stage for an amazing sociable/entertaining space incorporating kitchen, living and dining."



Abstract Expressions
Pewter
Halifax Oak

Onyx Grey
Cabinets

Orphic
Tigerwood
Nero

Black
Smoked
Glass

“ *Listening helps me understand how they currently live and how they want to live going forward, allowing me to develop solutions for the proposed scheme* ”

Alternative Design Two: A quintessential traditional kitchen design featuring a chimney breast, & unique island with a breakfast bar, showcasing diverse design possibilities within the same space.



Andrew's design incorporates Shaker painted furniture with a contemporary twist via utilisation of brushed brass handleless profiles. The two alternative designs go in totally opposite directions to the incumbent crossover/hybrid design. The first follows a modern/contemporary theme as opposed to the second highly classic/traditional design. All three highlight and epitomise diversity of design. <<

Old English
White
Smooth
Flat Painted

Brass
Handles

Natural
Hamilton Oak
Cabinets

Okra
Smooth
Flat Painted

Potton Show Centre & Self Build Academy



Transformative Elegance: The Gransden Project - From its humble beginnings as a classic conservatory to a stunning open-plan garden room, this RK-Tec pioneer project at Potton's Self Build Academy showcases three evolutionary stages: the original kitchen, the initial RK-Tec renovation, and a recent modern makeover.





RK-Tec's collaboration with Potton's Show Centre and Self Build Academy recently celebrated a major milestone – a decade long partnership. This originally came about when two leading representatives from their respective organisations were invited to meet the then Housing Minister and sat alongside one another. The rest is history and led to a long and fruitful partnership.

The Show Centre and Self Build Academy provide a truly unique facility for those embarking on (or wishing to learn more about) building a dream property. Potton's academy facilitates a wide range of lectures and courses relating to the many facets involved with self build. The show homes provide food for thought and range in size, style and layout.

The kitchens within the Gransden, Wichambrook, Elsworth and Milchester show-houses were created by the RK-Tec partnership. All four case-studies are included within 'Insights to Kitchen Design' so for more information and background refer to the book.

The Gransden was the first project RK-Tec undertook at Potton's Self Build Academy. The title of the case study within 'Insights to Kitchen Design' - Conservatory to Garden Room, hints as to what was involved. Featuring a major revamp of the house and the original conservatory replaced by a purpose-built garden room and the ground-floor layout reconfigured to be more open-plan.

You may be a little confused as to why three Gransden kitchens are featured? The first is the original prior to the garden room being built and RK-Tec's involvement. The second is the RK-Tec kitchen incorporated into the revamped property. The third, a recent makeover completed earlier in the year. >>

The Wickhambrook was RK-Tec's second project and for those hankering after a quintessential barn conversion, but put-off by the structural issues and cost overruns which can occur – Potton's alternative is well worth investigating. One aspect we had to work around when designing the new kitchen was the existing tiled ground-floor which was not to be disturbed.



Wickhambrook: A Harmonious Blend of Barn Aesthetics & Modern Functionality.



The third RK-Tec kitchen was for a new contemporary house built to Passivhaus standard. The Elsworth proved an interesting and enlightening endeavour for all involved, as much of what was required (to meet the exacting standards) can be utilised or adapted to work within a more conventional kitchen situation. The alternative designs within the book provide further food for thought.



Sustainable Sophistication: The Elsworth, RK-Tec's third kitchen project, blends cutting-edge Passivhaus standards with contemporary design, proving that high-performance efficiency can coexist with stylish living.



The most recent RK-Tec/Potton kitchen project, involved the reconfiguration of the imposing Milchester – a modern take on an Edwardian style rectory. This was a very grand house - but being over 30 years old was in need of an update and makeover. Three rooms were combined into one with large bi-fold doors and so much more. The imagery tells the story of an impressive conversion.

So, if you are in the market to build a dream house, extend or revamp an existing property, or in need of a new kitchen – I can highly recommend a visit to Potton's Show Centre and Self Build Academy. <<



From Edwardian Grace to Modern Space: The Milchester transformation by RK-Tec/Potton melds historic elegance with contemporary living, uniting three rooms into a grand, open-plan area complete with bi-fold doors.





Transform vision into reality

Our end-to-end software solutions connect designers, retailers, manufacturers, contractors and consumers to make spaces amazing.

With the world's largest repository of product content, we equip you with the tools you need to transform vision into reality.

Visit cyncly.com



Design-led

Exclusive - British - Kitchen Furniture
Manufacturer



As Featured in: **Insights to Kitchen Design**
(40+ Years in the World of a Design-led Kitchen Specialist)
www.insightstokitchendesign.co.uk



www.callerton.co.uk



'Insights to Kitchen Design' by James Herriot, a compilation of forty years of expertise, offers readers a deep dive into the craft of designing dream kitchens. With twenty unique case studies and alternative designs under the same spatial conditions, the book is a treasure trove of inspiration and practical wisdom, capturing the essence of Callerton's ethos: 'Dreams to Reality'.

GRAND DESIGN

The

introduction to this 'Insights to Kitchen Design' case study explains much about the project: The title 'Grand Design' is extremely apt – not only from a kitchen perspective, but more so the new-build house within which this resides, and the way they come together in total harmony. Mandy a much respected design-led kitchen specialist from the English/Scottish borders developed the design of the kitchen in conjunction with her client to empathise with the layout of their new home.

Mandy's answer to the initial question put to her during a session with James Herriot when compiling the information on this project for his book - helps set the scene: Explain your client's initial vision, thoughts and intentions for their particular project?

"My client had a vision of how she wanted the kitchen and living spaces to blend with one another. The ground floor was to have an ergonomic flow with as few doors as possible, but with each area's purpose defined and identifiable. There was an emphasis on being streamlined, and with a focus on aesthetics. A large walk-in larder catering for storage was required and had to be readily accessible from the kitchen. The outside space was to flow with the internal layout, with an external dining area incorporated. The build was to centre around modern/contemporary natural materials."

Mandy added: "I became involved in the project from the point of the plans being passed, but prior to the build commencing. This was to ensure my client's vision was achievable within the defined space, but without having to make any adjustments to the plans." An eminently sensible approach to follow when engaged in such a project. >>



The essence of modern kitchen design, blending sleek lines & industrial materials with warm, inviting tones & natural light.

The insights series explores the unique approaches designers take to tackle a project. Mandy's response: "From the outset, I like to build a good relationship, get the client to trust my knowledge and assure them by working together we can achieve their dream. I always take on board what they want: this is paramount, and if not achievable never to be disparaged. My goal is to inspire via design and wherever possible incorporate their vision."

In relation to product choices, Mandy explained "My client had the idea of a dark colour, utilising industrial materials. Developing a colour palette to demonstrate such helped in making their final decisions." As you can see, these were excellent choices, and effective alongside the architecture of the house. The finished result a masterclass.

Mandy's design is best described as minimalist and contemporary. The two alternative designs are in total contrast: The first is from the opposite camp and derives from a more traditional genre – painted furniture, Aga, chimney canopy, classic features, glazed cabinetry, T & G panelling. The second described in the book as appealing to those with an 'Extravagant and Exuberant Nature' – bold Shaker painted furniture contrasted with a sleek contemporary island incorporating a raised breakfast bar. <<



Alternative Design One: Marking a stark transition, this kitchen moves from modern to classic traditional. Key features include painted furniture & a unique island.



Dried Lawn Grained Painted

Ink Green Grained Painted

Natural Hamilton Oak Cabinets

Brass Handles



Alternative Design Two: A daring blend of vibrant colours, diverse materials, & varied styles for the adventurous spirit makes for a truly unique & thought-provoking kitchen design.



Netherton Grained Painted

Abstract Expressions Black Gold Metal Slate

Valencia Gloss Black

Grey Textile Cabinets

Make room for freshness

Discover our new XXL models and get a lot more space in your fridge. The larger interior gives a perfect view, whilst still achieving maximum flexibility of freshness. These models may be larger in size, but that doesn't mean you need to compromise on our innovative cooling solutions.

Cool
#LikeABosch



More space to keep your fridge organised so nothing is overlooked and less food is wasted. Storing food has never been easier.

DISPLAYS & STUDIOS

The excerpt below, taken from 'Insights to Kitchen Design', illustrates James Herriot's approach to what is important when creating a design-led kitchen.

An aspect which stands out for me from my 40+ years in the design and manufacture of kitchens, has been to engage in the design and creation of innovative displays in collaboration with my Callerton colleagues and national network of specialist retailers.

I should point out that there is a distinction between creating an individual display and developing a successful showroom involving multiple displays. An excellent demonstration as to what's entailed, relates to a project produced during the 'Covid-19 Pandemic' when showrooms were closed by Government decree. To answer this we created the 'Virtual Studio'.

To gain a better insight to this project log onto www.rk-tec.co.uk and the 'Virtual Studio'.

The aim of any display is to demonstrate the three vital ingredients required of all successful kitchens: - Great design, great products and great project management - inspiring clients and broadening their horizons. To demonstrate we picked out a diverse array of ten thought provoking displays from Callerton's national network of design-led kitchen specialist retailers.

Here is a selection of imagery to demonstrate the diversity and ingenuity of such: -



Contemporary Meets Classic: A showcase of modern elegance & traditional charm in a design-led kitchen specialist showroom. This example features a bold central island, chic lighting, & a harmonious blend of colour & texture.

Crossover/Hybrid: A luxurious kitchen display featuring rich teal accents, sleek dark cabinetry, & a unique dining area, all highlighted by sophisticated lighting & contemporary finishes.



Rather like a flat plan and 3D CAD imagery: The former difficult for most people to envisage the final result, the latter bringing the design to life and an ability for clients to engage. Physical displays fulfil a similar function: Words and pictures can only go so far in demonstrating the aesthetics and functionality of a kitchen. A working display provides a hands on experience and a demonstration as to quality – also how products work in conjunction with one another.

To buy your dream kitchen without first assessing the quality of the products to be incorporated may subsequently prove foolhardy. Displays demonstrate design ability, product quality and project management skills – the three vital ingredients required to ensure your project is a success. <<

UNIFIED VISION: A Collaborative Design Journey for Contemporary Kitchen Brilliance

In most instances the process involved in creating a kitchen project includes the client, or clients and their chosen design specialist. Not in this instance, where the whole combined Design-led Retailer Team interacted with Callerton's display department to produce a stand-out scheme. Contemporary clean cut lines with high gloss furniture and contrasting timber elements proves to be highly effective.



DRAMATIC STATEMENT: A Kitchen Where Style & Functionality Meet

A kitchen with plenty of panache and flamboyance. The combination of the striking island, tall bank and wet area - a consummate lesson in relation to the fundamental elements of form and function. The island with curved breakfast bar and open cabinetry, the tall bank incorporating a butler's pantry along with glazed and open elements, the Belfast sink and dishwashing area and detail - spectacular.

WWW.INSIGHTSTOKITCHENDESIGN.CO.UK



Kitchen Spotlight

Space Management

A reputation for selling quality fittings for
kitchens & other home furniture

B

lum have built up a reputation for selling quality fittings for kitchens and other home furniture, but they also provide an array of services to help every touch-point of their business.

Open smoothly &
close gently –
every time'

From manufacturer through to the end-consumer, everyone can be assured of Blum's attention to detail, after over 70 years of experience. The company tests every fitting they make, from a "simple" hinge (it has 58 separate components!) through to hugely complex drawer runners which can take up to 70kg of weight.

When your fitters are finally installing your kitchen, you can be assured that even if they haven't used Blum before, there is a technical hotline to talk through every possible stumbling block, meaning you will benefit from a kitchen that works perfectly, for the whole of its lifetime. And once the initial glow of your new kitchen is over, you just really want a kitchen that works... with hinges, drawer and lift systems that open smoothly and close gently – every time. <<

blum®



Blum: The Epitome of Precision Engineering and Comprehensive Service in Modern Home Design – With over 70 years of innovation, every hinge and drawer system is a testament to their unwavering commitment to quality.



Le Chic Collection. Veined Patterns.Reborn.

#SilestoneLeChic



Victorian Silver

Versailles Ivory

Romantic Ash

Parisien Bleu

Bohemian Flame

Eclectic Pearl





Elegant Simplicity: A serene kitchen space where light tones and clean lines create a canvas for living.



Phil added "A kitchen is easy – but its relationship to and interaction with other rooms and how a family group utilises or wishes to use their home is important. Just presenting a kitchen layout fails to provide the full story; without engagement with the wider picture, it would be easy to miss opportunities to maximise a property's potential." This project an apt demonstration of such. >>

The breadth and depth of Phil's involvement in the reconfiguration of this amazing project, and his relationship with the client, can be seen in these extracts from the book help to set the scene with Phil explaining his relationship with his clients:

"We had an extremely close relationship, as we'd worked together on their previous property. I also undertook the project management of other areas and aspects of the renovation of the new house, hence an excellent rapport from an early stage." The following response from Phil in relation to the design/architecture/layout and his involvement - helps to provide further information:

"We wanted to create a modern vibrant living space that reflected the architecture of the house by utilising a classic Shaker door with a modern handleless twist. This tied in with the vaulted double height ceilings with American cassette style detail. We also rebuilt the end gable in reclaimed stone from redundant outbuildings, and added bi-fold doors to the same. Incorporation of the wine cellar and recessed wine cabinets were further touches."

As explained in the book this is an understatement by Phil in that his involvement in the architecture and obtaining planning permission went much further. So I leave you with imagery of the project which highlights the skill and ability of an amazingly talented individual.

The alternative designs for the 'Pièce de Résistance' project aim to demonstrate that beauty is in the eye of the beholder – each kitchen should be created to fulfil the needs and requirements of the individual. Aptly demonstrated by the alternative designs: The first demonstrates a transition from a crossover/hybrid to a traditional/classic alternative. The second embraces a geometric/modernist approach. The options are vast - hence the reason for engaging a design-led kitchen specialist. <<



Alternative Design One: A seamless transition to classic design, featuring a striking chimney breast, & a curved breakfast-bar island, reflecting the unique desires & functions envisioned for a dream kitchen.



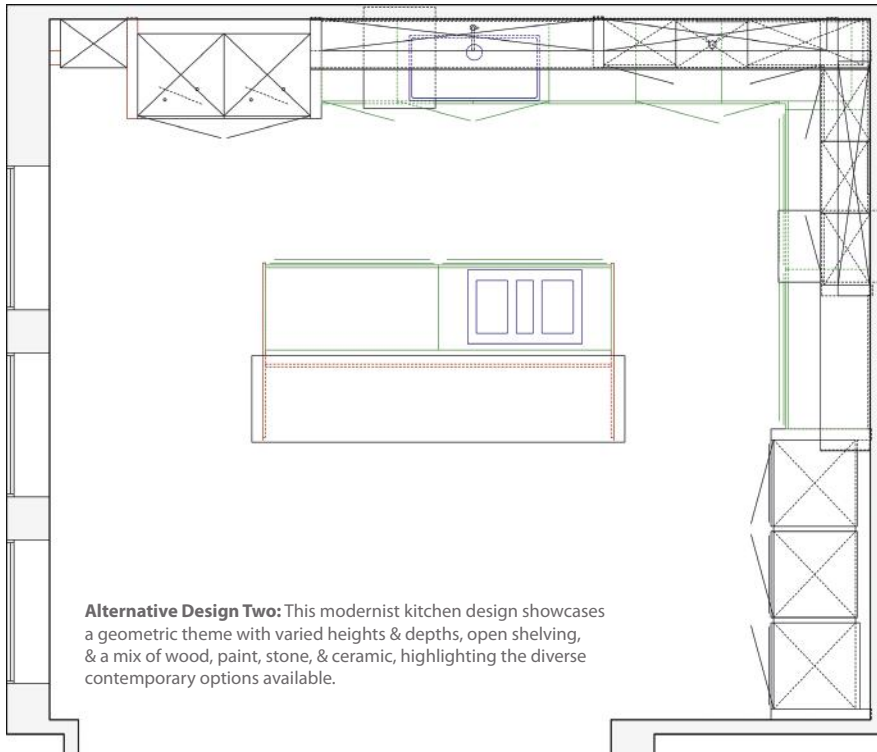
**North Grey
Smooth
Flat Painted**

**Light Grey
Cabinets**

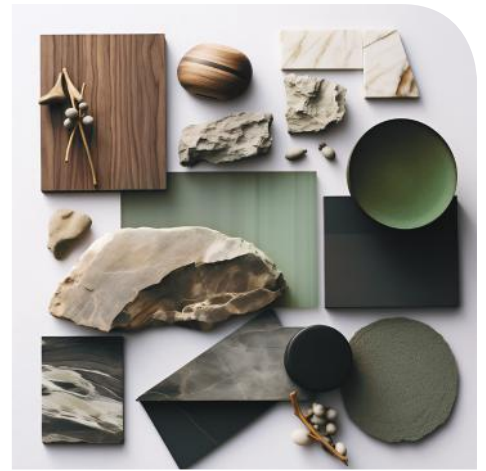
**Special
Smooth
Flat Painted**

**Abstract
Expressions
Natural
Halifax Oak**

“The options are vast - hence the reason for engaging a design-led kitchen specialist”



Alternative Design Two: This modernist kitchen design showcases a geometric theme with varied heights & depths, open shelving, & a mix of wood, paint, stone, & ceramic, highlighting the diverse contemporary options available.



<p>Pure Dark Grey Stained Oak</p>	<p>Monza Matt Reed Green</p>	<p>Natural Carini Walnut Cabinets</p>
---	--------------------------------------	---

KNOWLEDGE IS POWER

2023 saw RK-Tec member Callerton celebrate their 40th anniversary. At the event, Tom Wood Callerton's Customer Experience & Training Manager gave an impassioned talk entitled 'Knowledge is Power' and discussed the benefits of 'Right 1st Time'. The importance and significance of education and the expansion of knowledge within the world of the design-led kitchen specialist was his theme.

A whistle-stop tour of Callerton's training programme provided an insightful glimpse into their comprehensive curriculum for those entering or already engaged in this fascinating and rewarding profession. Kitchen Inspiration aims to highlight not only the skill and ability required, but also its constantly changing nature, hence the significance and importance of life-long learning.

All the RK-Tec brands are highly active and engaged in education and training in relation to their products and services. As can be deduced from Kitchen Inspiration: The knowledge required of all the many elements and facets involved in a successful kitchen project are vast and complex. Hence 2024 sees a further RK-Tec initiative relating to education and training.

James Herriot's book 'Insights to Kitchen Design' (40+ Years in the World of a Design-led Kitchen Specialist) adds a new element, not only to Callerton's training programme, but also other RK-Tec partners. The twenty kitchen case-studies and their alternative designs provide a platform as to training in relation to all the wide-ranging products and services incorporated within each of these.



Design Wisdom Captured: 'Insights to Kitchen Design' prominently displayed, encapsulating four decades of a kitchen specialist's refined expertise (www.insightstokitchendesign.co.uk)

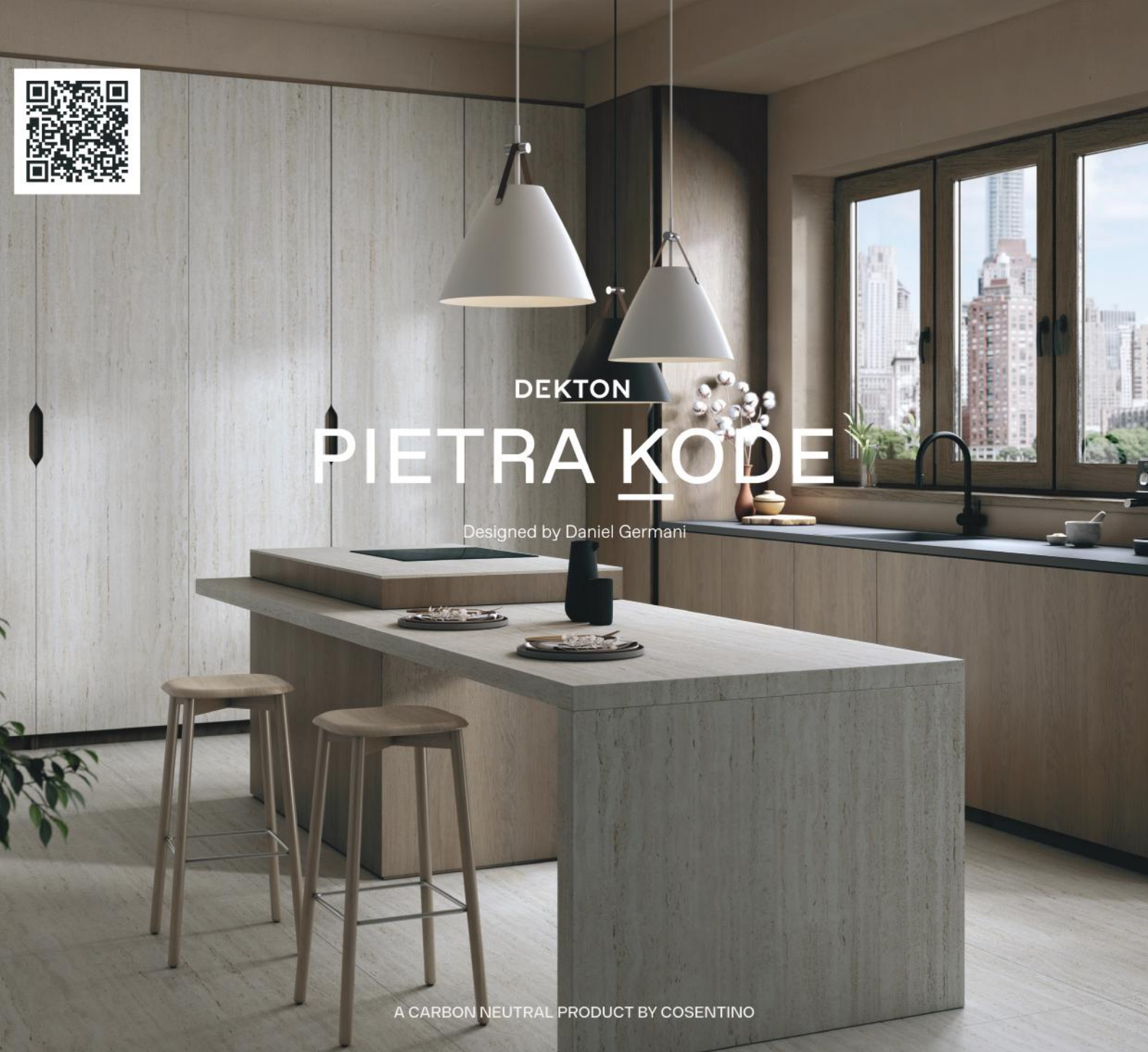


Celebrating Milestones: Key figures take the stage, marking four decades of innovation & success in design-led kitchen furniture manufacture.



Kitchen Inspiration highlights great design, great products and great project management. The 'Insights to Kitchen Design' case-studies provide the opportunity not only to examine how these elements work together - but also how the RK-Tec partner's diverse products (appliances, sinks, taps, waste management, worksurfaces, lighting, furniture & components) integrate into a project.

RK-Tec came into being 15 years ago as a partnership with education and training an important ingredient - good to see their efforts have in no way diminished. <<



DEKTON

PIETRA KODE

Designed by Daniel Germani

A CARBON NEUTRAL PRODUCT BY COSENTINO

Introducing Pietra Kode: the Italian stones of yesteryear recoded by DEKTON for contemporary architecture and design.

VICENZA KODE



VK01
NEBBIA

VK02
AVORIO

VK03
GRIGIO

VK04
GRAFITE

TRAVERTINO KODE



TK05
SABBIA

TK06
MARMORIO



CEPPO KODE



GK07
CEPPPO



WORLD DESIGN
CAPITAL
VALENCIA 2022

COSENTINO UK - CENTRAL OFFICES
Unit 10 Bartley Point / Osborn Way Hook Hampshire RG27 9GX
HQ: info.uk@cosentino.com
cosentino.com / Follow Us:  

Outstanding Performance,



Intelligently Designed

The perfect solution for keeping your kitchen design clear and with unhindered sightlines, the glassdraftAir's stylish premium glass panel retracts fully into the unit when not in use. When in operation, its unique transparent design adds a subtle highlight to your kitchen, while its innovative Guided Air technology guarantees excellent performance from all cooking zones.

SIEMENS