

## Handheld Raman Identifier

# RS1000

## Handheld Detection Equipment



JINSP RS1000 handheld identifier is the new generation of handheld detection equipment designed for the identification of unknown materials. It is used to quickly identify drugs, precursor chemicals, dangerous liquids, explosives, jewelry, jade, industrial raw materials, etc.

The device is compact and lightweight, weighing less than 500g, making it suitable for single-hand operation and easy portability.

The built-in safety inspection module can detect the material without any variation, ensuring the detection of dark black material without ignition risk.

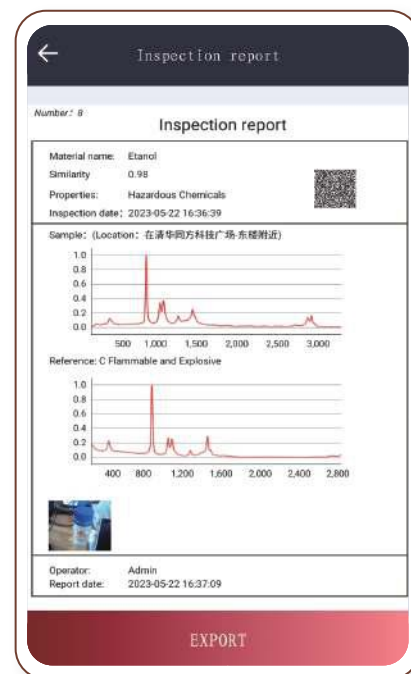
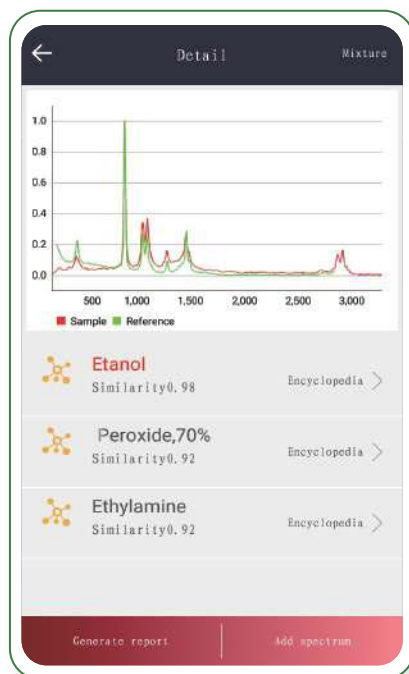
It has a 5-inch high-sensitive touch screen with a built-in 13-million HD camera along with built-in WIFI, 4G, and Bluetooth transmission module, providing an intelligent operation experience.

### Benefit Highlights

- ◆ Handheld and ergonomic design
- ◆ Analyze and identify substance in about 3 seconds, typically
- ◆ Extensive library - adding new spectrograms
  - Built-in WIFI, 4G, camera and barcode scanner
- ◆ Accurate and rapid identification of suspicious substance
  - Material name and spectrogram
  - Full encyclopedic information



# RS1000 Handheld Raman Identifier



## Technical Specification

Technology	Raman Technology
Database	<p><b>Narcotics &amp; precursors:</b> Heroin, Methyl amphetamine (Ice), Ephedrine, Acetone, etc.</p> <p><b>Explosives:</b> TNT, RDX, TATP, Nitra mine, etc.</p> <p><b>Dangerous Liquid:</b> Ethanol, Gasoline, Hydrogen peroxide, Nitric acid, etc.</p> <p><b>Gem:</b> Diamond, Agate, Jade, etc.</p> <p><b>Industrial raw materials:</b> PET, PP, PS, etc.</p>
Result	Name, Property, Spectrum, MSDS (Material safety datasheet), Result-report (Result, image, location, operator, date, time)
Connection	Wi-Fi, 4G, Bluetooth, Micro-USB
Operation	5' Touch Screen, big button, intuitive man-machine interface operation
Working Temperature	-20~50°C
Power Supply	Rechargeable lithium battery, 4-6h
Size	160mm*84mm*30mm (without probe)

### JINSP COMPANY LIMITED

JINSP is affiliated with China National Nuclear Corporation, and its core technology originates from Tsinghua University.

+86 (10) 5083 7191    sales@jinsptech.com    www.jinsptech.com  
 21st Floor, Building D, Tsinghua Tongfang Science and Technology Plaza,  
 Haidian District, Beijing

