

SANIPEXGROUP

SLAB FABRICATION

BESPOKE SOLUTIONS

CUT TO YOUR SPECIFICATIONS _____



FABRICATION SERVICES

TAKING OUR CAPABILITIES AND FUTURE COLLABORATIONS TO AN EXTRAORDINARY LEVEL

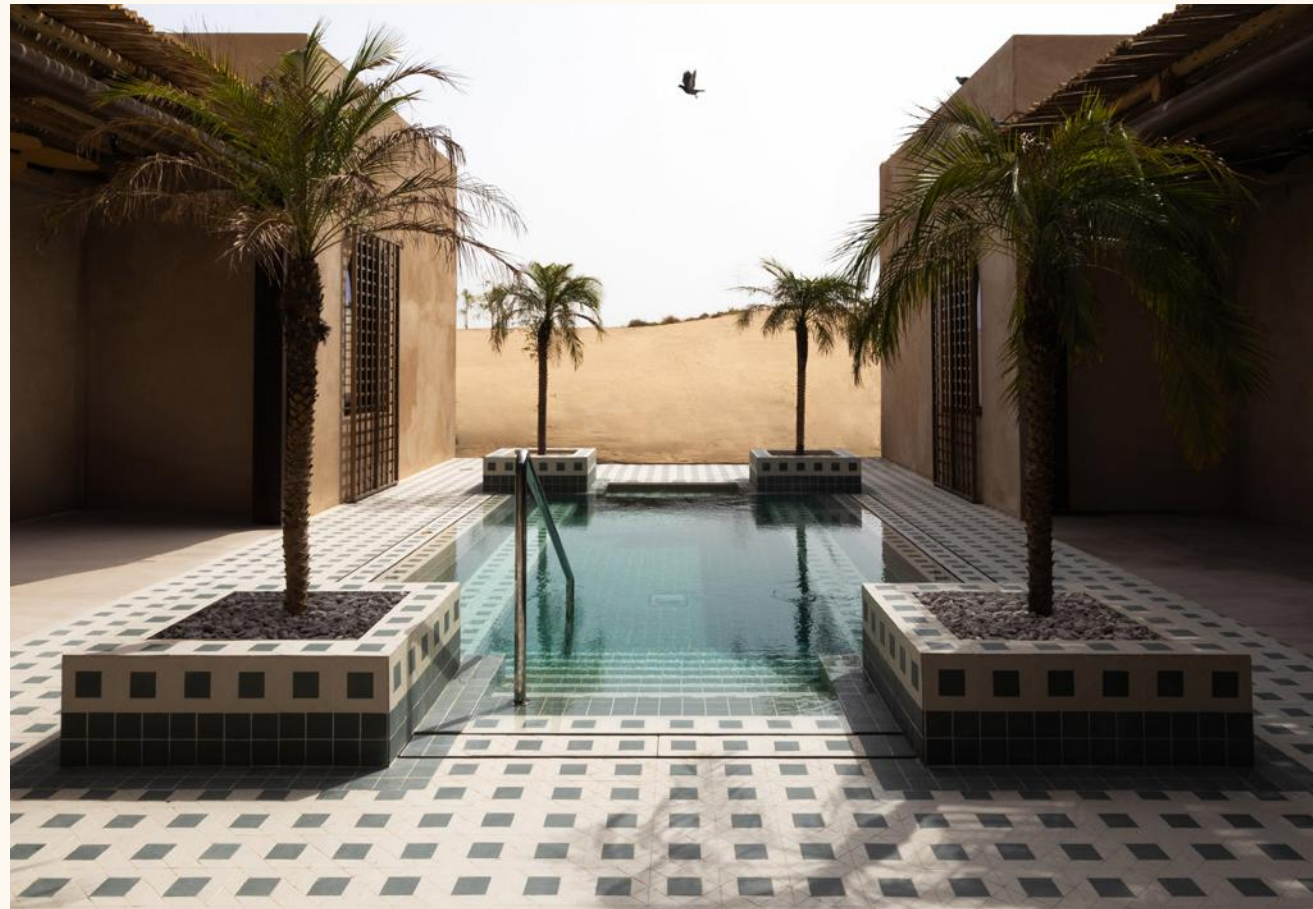
At SANIPEX GROUP, we understand that surfaces and made-to-measure solutions are an important feature for every interior design project.

With our in-house, state-of-the-art Slab Fabrication facility in Jebel Ali, Dubai, the design possibilities are endless. Here, we expertly produce custom solutions from a full collection of stocked porcelain tiles and slabs.

So whether you are a homeowner seeking a unique statement piece, a designer looking for the perfect kitchen countertop, or a fit-out contractor requiring intricate mosaic tile designs, we bring your ideas to life to your exact requirements for a seamless fit before handover.

With over AED50 million worth of luxury on-trend tiles and slabs available in stock, you have more options than ever when specifying your projects.

And, as all our stock and manufacturing capabilities are in-house, we deliver your bespoke solutions fast to suit even the tightest of schedules.



OUR STORY

A HISTORY OF SANIPEX GROUP

For 30 years, we have built our prestigious product portfolio, extended our client base and propelled our business to service MEA, Europe, Oceania and Africa through our Retail, Trade, Project and digital channels. Combining the highest quality bathroom, kitchen appliance, surfaces, lifestyle, lighting and outdoor living solutions with exceptional customer service, SANIPEX GROUP always delivers.

Established in Dubai, UAE in 1995, SANIPEX GROUP has grown to encompass flagship showrooms in key locations including Dubai, Abu Dhabi and London, alongside an established presence with partner retailers worldwide.

From commercial projects to residential developments, we assist our client base of architects, designers, developers, retailers and consumers to create beautiful spaces.

Offering consistently high service levels, at SANIPEX GROUP, the customer always comes first.



OUR SERVICES



Bespoke Kitchen/
Bathroom Counters



Cut-To-Size



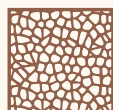
Steps



Skirtings



Grooving
on Tiles



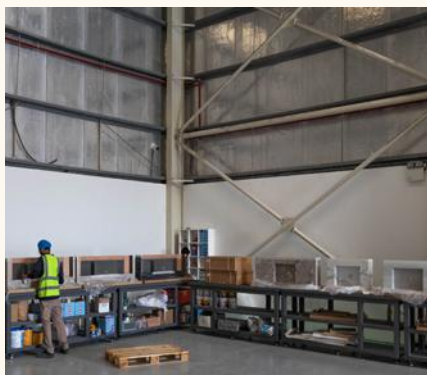
Mosaics



Bespoke
Designs

“The facility provides us with a high level of quality, innovation and precision. For our customers, this means a significant increase in speed and flexibility due to the ability to customise size and finishes through our in-house team and expert artisans who hand finish each product with care.”

– Leon Dewson, Production Manager at SANIPEX GROUP



TURN YOUR VISION INTO REALITY

NEED A CUSTOM SOLUTION?

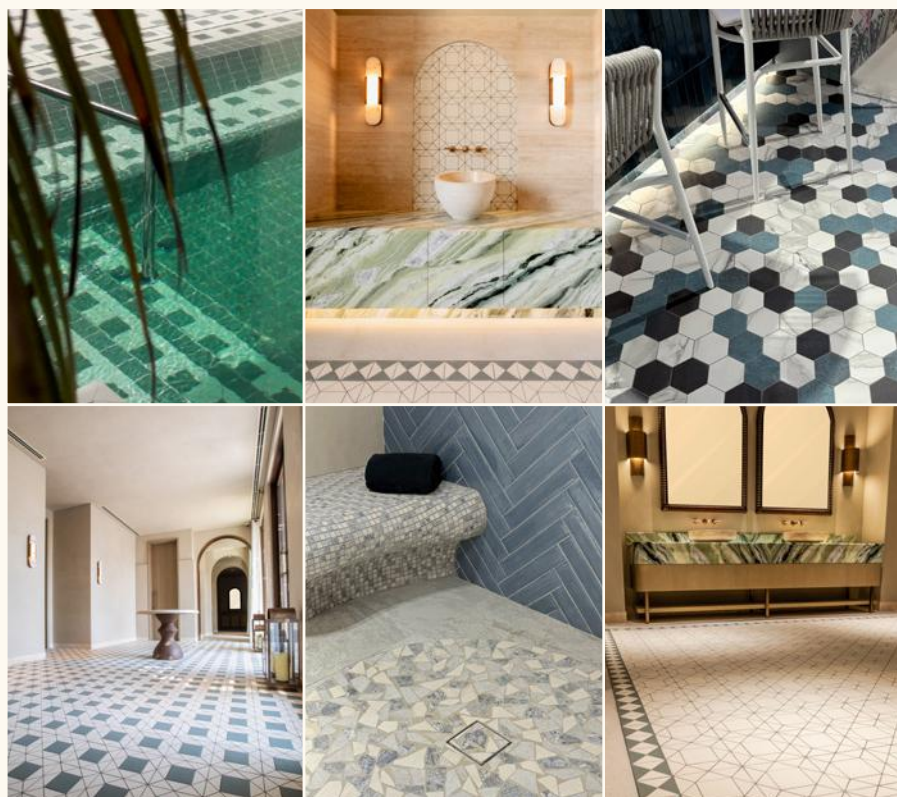
Our bespoke service lets you curate your spaces to suit your unique tastes and preferences.

See how it works:

- 1 Select your tile or slab of choice from our extensive collection.
- 2 Contact our sales team to specify your design.
- 3 Our CAD team will create a drawing for your confirmation and approval.
- 4 Once you are happy with the design, it will be sent to production, ensuring your vision is brought to life with precision.
- 5 Our Slab Fabrication facility employs advanced cutting technology with 30 blades across five machines, using up to 124,000 litres of water per day to cool, clean, and maintain efficiency.

CUSTOM MOSAICS

Have a design for a floor, wall or surface in mind? We custom-cut exquisite European porcelain stoneware into masterpiece mosaics designed to stand the test of time, even in spaces with high footfall. Choose the pattern, colour and finish to your exact needs and own a stunning focal tile design made just for you.



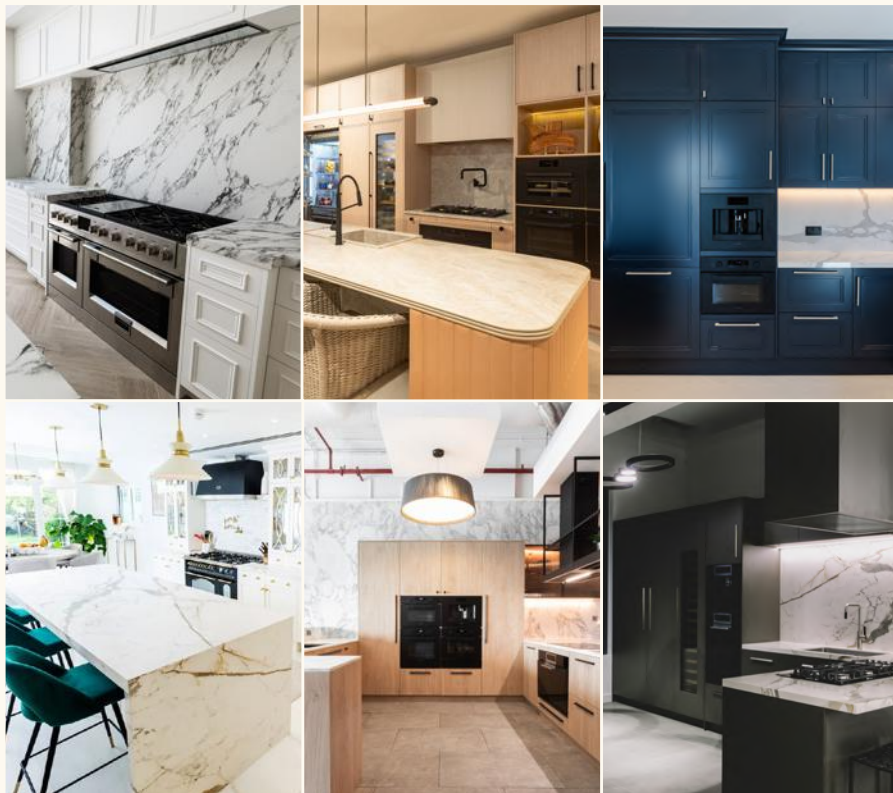
BATHROOM

Create the spa bathroom of your dreams with a full custom solution. Bespoke basins, countertops and shelves create the perfect vanity area while custom shower rooms can be made however you like and to whatever dimensions, with the added option of a shower seat and a one-of-a-kind mosaic tile design.



KITCHEN

Transform the look of your kitchen with custom countertops and backsplashes designed, fabricated, and installed to your exact specifications. Whether you prefer a minimalist design, a contemporary look or a traditional style, our full-service approach ensures every detail is covered, from concept to installation.



LANDSCAPE

Seeking a few custom outdoor products or a full landscape transformation? We take care of it all. Elegant planters, tabletops, and fire pit tables set the scene, while landscaping steps, seating areas, outdoor kitchens, bars, swimming pool mosaics, tiles, and cladding brings the full vision to life — letting you enjoy more time outdoors in style.

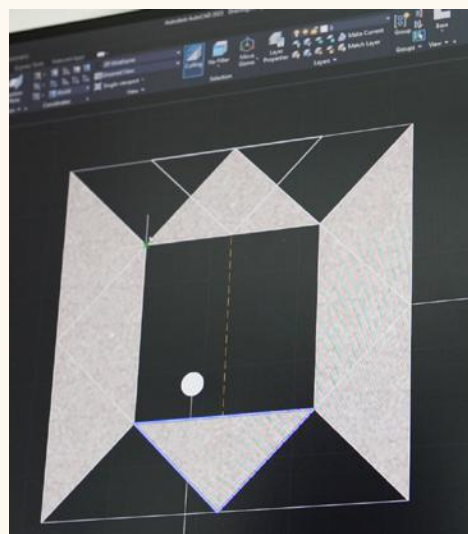


BAB AL SHAMS PROJECT

A CASE STUDY

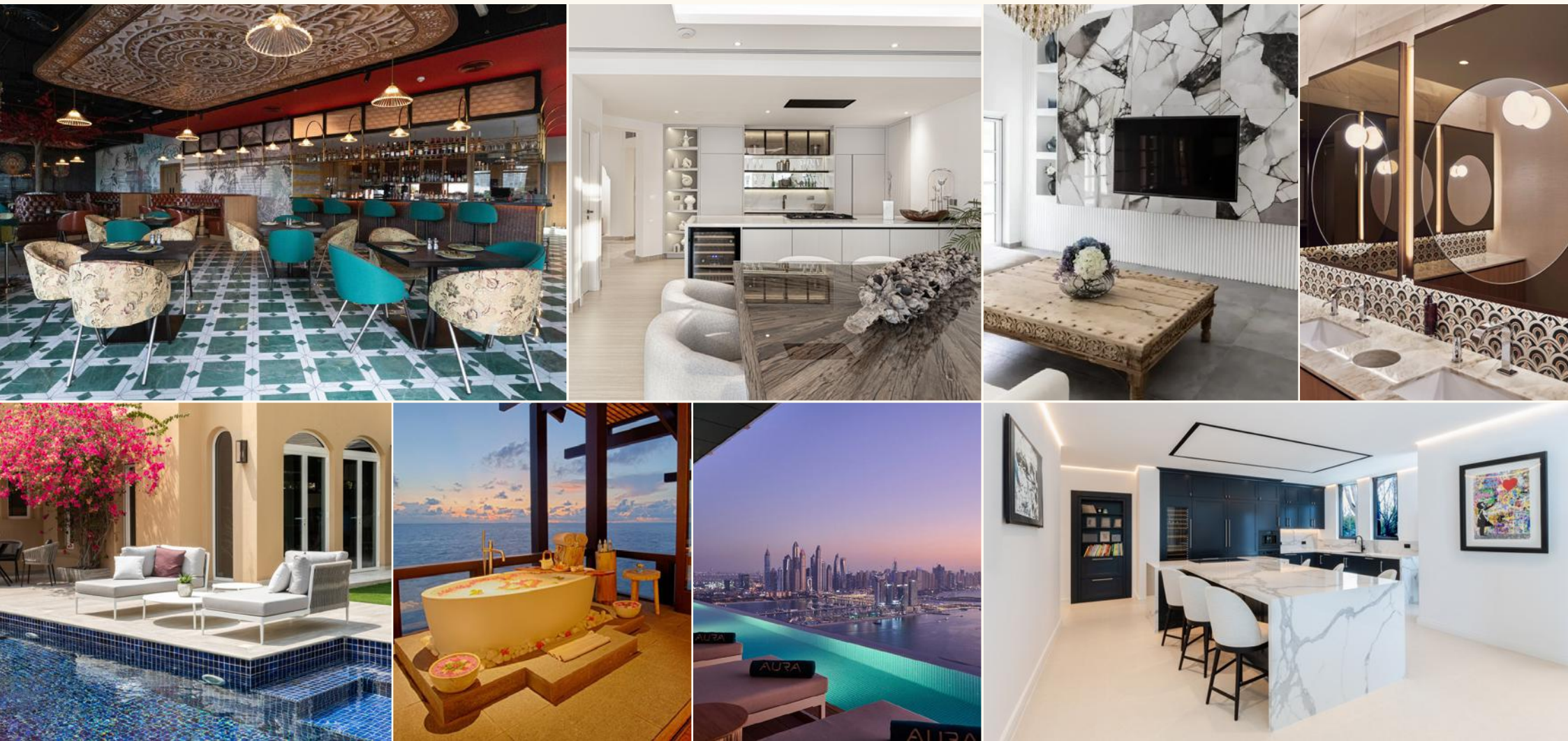
The challenge was the floor in the hotel's new spa area and the oasis-like infinity pool. A total of 250m² of Urban Space Ivory and Giada tiles were used in combination to create a hypnotically harmonious geometric pattern. The skilled team at SANIPEX GROUP's Fabrication facility carefully cut the ceramic tiles into small isosceles triangles and squares – totalling over an astounding 69,700 pieces – before fixing them together and preparing them on a 20x20cm mesh ready for easy final supply and installation.

The overall design lends a characteristically contemporary nod to traditional hammam tiles, which lead throughout the serene spa and out, framing the pool area and leading the eye along the space.



PROJECT REFERENCES

AS THE PREMIER CHOICE FOR INDUSTRY PROFESSIONALS AS WELL AS HOMEOWNERS, OUR HIGH-QUALITY SOLUTIONS MEET THE DEMANDS OF EVEN THE MOST COMPLEX DEVELOPMENTS.



BENEFITS OF PORCELAIN

A STRONG CHOICE AMONGST DESIGNERS, PORCELAIN TILES AND SLABS ARE DESIGNED FOR AN ENDLESS ARRAY OF APPLICATIONS, PRIZED FOR THEIR VERSATILITY AND ENVIRONMENTALLY-FRIENDLY BENEFITS.

Find out why this superior material is the go-to option for your next project.

1 HARD-WEARING & SUPER STRONG

As a highly dense material, Porcelain is 30% stronger than granite, making it ideal for busy kitchens, family bathrooms and high-traffic spaces. Scratch, stain, and heat-resistant, it can handle daily wear with minimal upkeep.

2 EASY TO MAINTAIN

Porcelain is easy to clean, non-porous and therefore requires no sealing. With a reduced likelihood of bacterial growth, porcelain tiles & slabs are an excellent choice for high-humidity spaces, such as bathrooms and steam rooms.

3 PERFECT FOR INDOORS & OUTDOORS

Thanks to its UV-resistant nature, our tiles and slabs retain colour even under prolonged sunlight. This makes them a great choice for open-plan spaces that seamlessly connect the interiors with the exteriors.

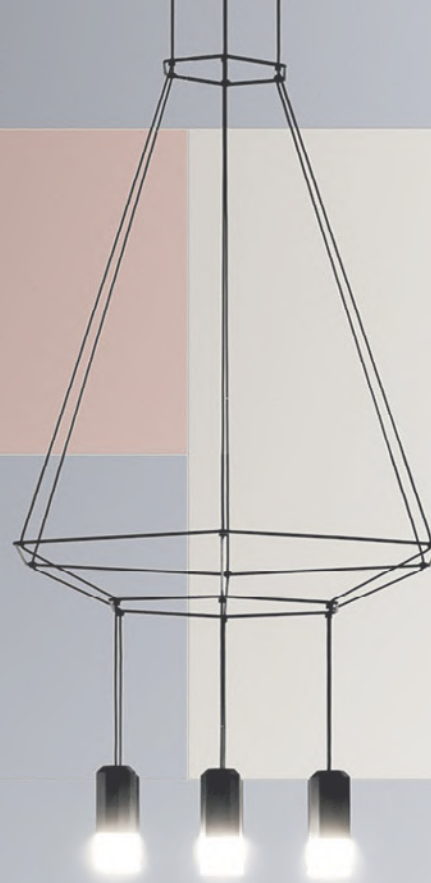
4 ENDLESS STYLE OPTIONS

Whether you prefer the elegance of marble, the sleek look of cement, or a classic terrazzo look, porcelain offers complete design flexibility in a variety of high-colour designs. With multiple finishes, thicknesses, and anti-slip options, it suits a wide range of applications: from feature walls to kitchen islands, and patios to pool decks.

5 ENVIRONMENTALLY-FRIENDLY

Made from natural materials, porcelain is recyclable and free from harmful VOCs ensuring a clean, healthy environment wherever the application. It is a safe alternative to quartz countertops, which, in recent times, have seen much media attention surrounding the negative health impacts around the fabrication process due to the presence of toxic dust.





SANIPEXGROUP

WWW.SANIPEXGROUP.COM