

# EMORY





# Come to Emory. Do what you were *made to do*.

Discover a shared sense of community, purpose, and opportunity that's impossible to deny and invigorating to embrace.

---

“

I wanted to go somewhere that had a lot of opportunities not just for professional growth but for personal growth.

—Finn, junior

I want to prove to those who told me I couldn't succeed that there are no limits to what I can do when I have access to the right opportunities.

—Noemi, senior

My time at Emory has 100 percent impacted my career goals.

—Space, sophomore

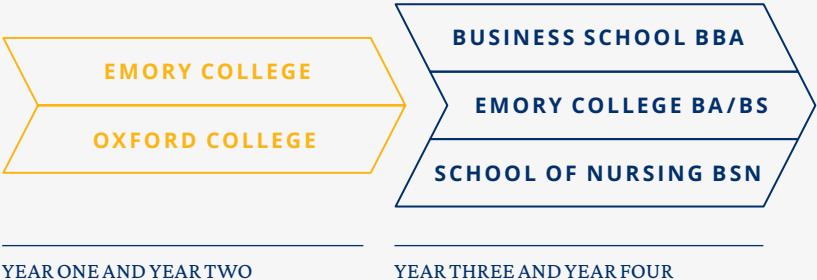
”

# Two schools. *One purpose.*



Emory is renowned for faculty excellence and academics that shape critical thinkers and compassionate achievers. And it all starts with applying to our undergraduate colleges.

**TWO PLACES TO START AND  
THREE PATHS TO CHOOSE FROM.**



**5,567 UNDERGRADUATES**

A liberal arts college at the center of a thriving research university, Emory College is located in Atlanta’s historic Druid Hills neighborhood.



**967 UNDERGRADUATES**

A liberal arts college for first- and second-year students on a close-knit campus, Oxford College is on the original site of Emory University, 38 miles from Atlanta.



**1,435 UNDERGRADUATES**

In this training ground for principled leaders, students develop the innovative thinking and problem-solving skills so crucial for success in a global, data-driven world.

Learn more at [college.emory.edu](https://college.emory.edu)

Learn more at [oxford.emory.edu](https://oxford.emory.edu)

Learn more at [goizueta.emory.edu](https://goizueta.emory.edu)

# Our students: *flourishing together.*

Meet your fellow students on the Atlanta campus

35+  
*recognized faith organizations on campus*

100+  
*nations represented*

50  
*states + Washington, D.C. and Puerto Rico*

## SELF-REPORTED RACE/ETHNICITY\*

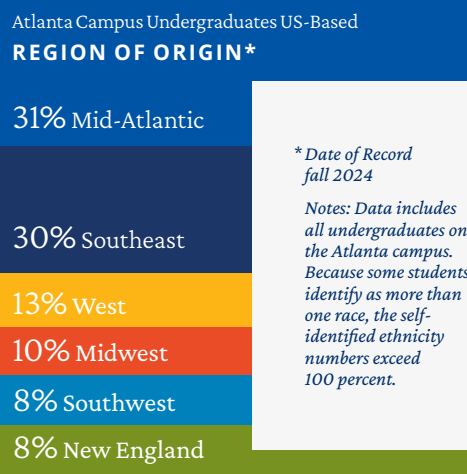
*Atlanta Campus Domestic Students*

- 34% Asian/Asian American
- 16% Black/African American
- 14% Hispanic/Latinx
- 1% Native American
- 49% White/Caucasian
- 4% Did Not Identify



## 342 UNDERGRADUATES

Emory nursing curriculum brings real-world health care to the classroom, empowering students to practice skilled, compassionate care and become leaders who make a difference.



\* Date of Record fall 2024  
Notes: Data includes all undergraduates on the Atlanta campus. Because some students identify as more than one race, the self-identified ethnicity numbers exceed 100 percent.

Learn more at [nursing.emory.edu](https://nursing.emory.edu)



# Be challenged *in the best way possible.*

Emory encourages you to push your intellectual curiosity. You'll be ready for your first job or graduate school, but you'll also gain knowledge and skills for a future that needs your leadership.

---

80+  
majors

---

60+  
minors

---

20+  
interdisciplinary choices,  
including a joint degree  
with Georgia Tech in  
bioengineering



## CONTRIBUTE TO A BREAKTHROUGH

Participate in ground-breaking research programs that drive discovery, forge partnerships, and help save lives.

No. 4 Best Classroom Experience (*Princeton Review*)



## FACULTY WHO CARE ABOUT YOU

Our professors—the ones who write the books, run the labs, and make discoveries—teach. They'll collaborate with you and inspire your future.



---

### EMORY COLLEGE

**76%** *of classes have fewer than 30 students*

**90%** *of students participate in at least one internship or research project before graduation*

---

### OXFORD COLLEGE

**19** *Average class size*

**100%** *of students participate in experiential learning through internships, research, arts, global learning, or community engaged learning*

---

### GOIZUETA BUSINESS SCHOOL

**12** *areas of study*

**5** *collaborative concentrations with Emory College*

**99%** *of students participate in at least one internship or research project before graduation*

---

### NELL HODGSON WOODRUFF SCHOOL OF NURSING

**No. 1** *Bachelor of Science in Nursing program in the US (US News & World Report)*

**94%** *of students pass the NCLEX*



# Apply what *you learn.*

---

**100%**

*of majors offer research opportunities*

---

**Plus**

*research programs for the summer and for first-time undergraduate researchers*

---

---

**EMORY LIBRARIES**

**15**

*distinct libraries and locations*

**40+**

*subject librarians meet specialized research needs*

**6 million+**

*print and electronic volumes*

**61k+**

*Ask a Librarian queries*

**370k+**

*Special collection volumes*

## RECENT STUDENT RESEARCH TOPICS

- Developmental origins of social behaviors such as schadenfreude and gift malaise
- The total synthesis of 4-hydroxy-2-pyridone natural products, which show potent antimicrobial activity
- The work of the National Advisory Commission on Civil Disorders in 1960s Atlanta
- Internet language and humor
- Conceptions of gender in Mandarin-language popular music from China
- How PTSD can impact the mood and lives of pregnant African American women
- The neuropsychological underpinnings of literacy and bilingualism





## GLOBAL LEARNING

Broaden your horizons and add a global perspective to your major.

---

### EXPAND YOUR WORLDVIEW

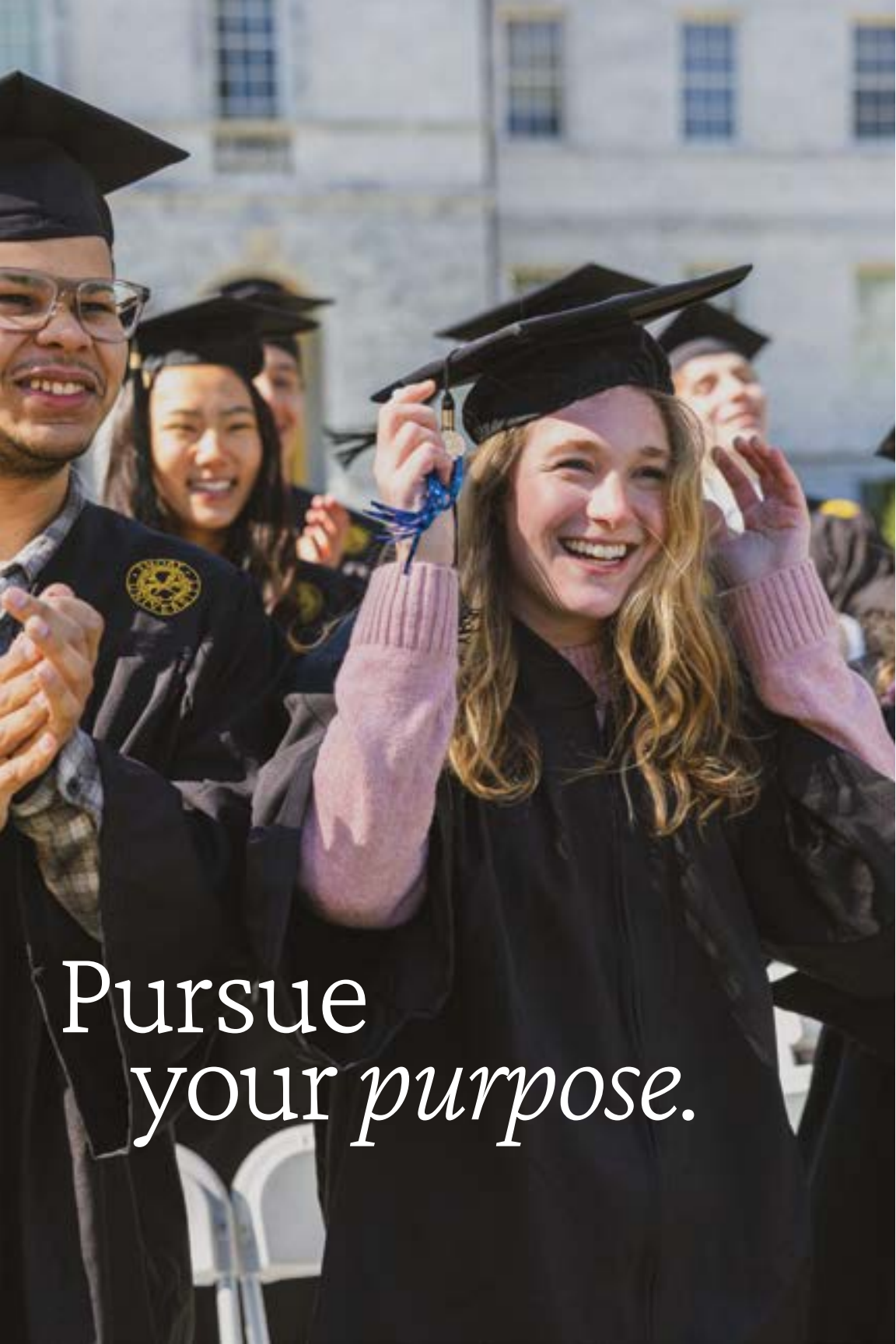
- 110+ programs in 40+ countries across 6 continents
- Go for a semester, summer, or year
- Take your financial aid and merit scholarships with you

---

### WHAT AND WHERE CAN I STUDY ABROAD?

European politics in Berlin | History, society, and environment in Cuba | Neuroscience and behavioral biology studies in Paris | Music in Italy | Psychology and linguistics in Japan | Global health nutrition in Peru | Economics in London | Tibetan Mind/Body Sciences in India | Biology in Australia | Arabic Language and North African Studies in Morocco | And at least 100 more

# Be a citizen *of the world.*



Pursue  
your *purpose.*

As a research institution, we focus on results. We're happy to report that our graduates do very well—and so will you.

### CAREER ADVISING FROM DAY ONE

- CAREER COACHES provide holistic guidance for all four years and beyond.
- Expert TRAINING AND SUPPORT prepares business and nursing students.
- Specialized PREPROFESSIONAL ADVISING is available in fields including pre-health and pre-law.
- CLASS TO CAREER imagines pathways through the Oxford College curriculum connecting class to career discernment and offers skills training for life's next steps.
- CAREER TREKS take students to visit Emory University alumni at work across the US.
- THE HATCHERY, our innovation center, can help you launch a start-up, gain mentoring and skills in entrepreneurship, and even create your first prototype.

### LEAVE CAMPUS WITH REAL WORK EXPERIENCE

- 3,000 internship opportunities available in Atlanta alone
- Most students complete at least one internship



Learn more at [pathways.emory.edu](https://pathways.emory.edu)

---

### EMORY COLLEGE

**97%**

*of Emory College graduates had a job offer or grad school acceptance within six months of graduation\**

**TOP GRAD SCHOOLS:** Emory University, Columbia, Duke, Harvard, Penn

**TOP EMPLOYERS:** Goldman Sachs, Deloitte, Amazon, Capital One, Epic

---

### NELL HODGSON WOODRUFF SCHOOL OF NURSING

**90%**

*of Nell Hodgson Woodruff School of Nursing graduates had a job offer or grad school acceptance within three months of graduation\**

**TOP EMPLOYERS:** Emory Healthcare, Children's Healthcare of Atlanta, Johns Hopkins Medicine, MedStar Health, Children's National Hospital

---

### GOIZUETA BUSINESS SCHOOL

**97%**

*of Goizueta Business School graduates had a job offer or grad school acceptance within three months of graduation\**

**TOP EMPLOYERS:** Deloitte, PwC, EY, McKinsey & Company, Bank of America

---

### ALUMNI NETWORK

**176K+**

*Emory alumni worldwide*

**TOP CITIES FOR ALUMNI:** Atlanta, New York City, Washington, D.C., Chicago, Boston

\*Note: The business school and the nursing school report employment data within three months of graduation; Emory College reports data within six months.

All outcomes information for the Class of 2024 includes students who started at Oxford College and Emory College.

# A community *you'll* *call home.*

Collaborative, friendly, and connected, our community offers space and support to explore what interests you and help you grow.







## HOUSING AND DINING

- 57% of Atlanta campus undergraduates live on campus
- 8 first-year residence halls
- 11 on-campus dining options
- Historic Atlanta neighborhood
- No. 3 Best College Dorms (*Princeton Review*)

## A NETWORK OF SUPPORT

- Center for Student Wellbeing
- Counseling and Psychological Services
- Student Health Services
- 24/7 Emotional Well-Being Support

## EXERCISE AND WELL-BEING RESOURCES

- Fitness centers
- Outdoor recreation programs
- Group fitness classes
- Club and intramural sport programs

## HELPING YOU FLOURISH

Emory provides a uniquely purposeful path integrating four dimensions of your college journey:

- Academic Experience
- Professional Pathways
- Purpose and Meaning
- Community and Well-Being





# Get involved and *have fun.*

There is always something exciting happening on campus—and our students love to be involved. They're equally passionate about extracurriculars as academics, making our community collaborative and close.



## OUR UNUSUAL AND FUN TRADITIONS

- First Day Fest, a pop-up carnival on the Quad, honors the first day of class.
- At Songfest, first-years join in a song-and-dance competition for residence hall pride.
- Wonderful Wednesday brings us together for food, fun, and themed events every week.
- Dooley's Week is the birthday celebration of our unofficial mascot.
- Take your photo by the gate to mark the beginning and end of your Emory journey.
- Candlelight Crossover celebrates when students "cross over" to alumni status.

## RECENT CAMPUS SPEAKERS

- Andrew Young, civil rights activist, politician, and diplomat
- Megan Rapinoe, World Cup champion and Olympic gold medalist
- Usher Raymond IV, singer, dancer, actor, and entrepreneur
- Yara Shahidi, actress, activist, and advocate

## TWO MASCOTS

- Swoop (an eagle), our official mascot
- Dooley (a skeleton), our unofficial mascot

---

**325+**  
*student  
clubs and  
organizations*

---

---

**330+**  
*Arts at Emory  
events every  
year*

---

---

**83%**  
*of students  
volunteer*

---

---

**19** *varsity  
sports teams,  
30+ club teams,  
15 intramural  
sports*

---

---

**No. 1**  
*Best Quality of  
Life (Princeton  
Review)*

---

“

Emory gave me the ability to work with, meet, and become closest friends with people I never would have known in another setting.

—Ben, senior

”



## EXPLORE

A busy, global city, Atlanta has lots to offer, from internships to entertainment and many places to explore.

There's  
*more*  
to Atlanta  
than nice  
weather.

### WELCOME TO THE ATL

- A business, tech, entertainment, and health care hub.
- So many trees, it's called "a city in a forest."
- Home to 57 colleges and universities.
- Average February temperature: 57° (with some days in the 70s).
- About half of Atlanta's residents come from outside Georgia.

### WHAT YOU CAN DO

- Bike or walk the 22-mile Beltline path linking neighborhoods and lined with art, restaurants, and cafes.
- Take in theater, concerts, museums.
- Go to a music festival in Piedmont Park.
- Cheer on the city's six pro sports teams.
- Explore the nation's third-largest arts campus found at the Woodruff Arts Center.



# Gain *experience.*



3,000+ ways to intern, research, and volunteer at hundreds of organizations.

## GET YOUR START

- No. 1 Best place to start a career (*WalletHub*)
- No. 1 Most livable city in the continental US (*The Economist*)
- No. 4 Most promising locations to find work for newly minted college graduates (*ADP Research Institute*)
- Top Ranked Best place to live in the US (*Money*)

---

## HEALTH CARE AND PUBLIC HEALTH

**TOP EMPLOYERS:** Emory Healthcare, Centers for Disease Control and Prevention, American Cancer Society, CARE, Children's Healthcare of Atlanta, Emory's Winship Cancer Institute

---

## CIVIC ENGAGEMENT

**TOP EMPLOYERS:** The National Center for Civil and Human Rights, The Martin Luther King Jr. Center for Nonviolent Social Change, The Carter Center

---

## MEDIA AND BUSINESS

**TOP EMPLOYERS:** The Coca-Cola Company, Cox Communications, UPS, The Home Depot, Delta Air Lines, Microsoft, Google, Honeywell



# Oxford College

**Good things come to those who seek.**

## **A FRIENDLY, CONNECTED COMMUNITY**

- 99% of Oxford College students live on campus
- 10 varsity sports teams
- 10+ club and intramural teams
- 80+ clubs and organizations
- 65% of Oxford College students hold a leadership position on campus
- 100% of Oxford College students participate in experiential learning
- 19 students per class, on average

## **COMMUNITY ENGAGEMENT AND SERVICE**

Alternative Breaks, Community Engaged Learning, Volunteer Oxford, Oxford Service Corps

## **SUMMER INTERNSHIP SCHOLARSHIPS**

Tarbutton Leaders Fellowship, Arrendale Award, Mosley Award, Kabir Fellowship

## **OXFORD CAMPUS HOUSING AND DINING**

- Students live on campus for both years
- 4 residential complexes on campus
- 3 dining options on the Oxford campus

Oxford College, located 38 miles outside Atlanta on Emory's original campus, is a traditional liberal arts setting where students are empowered to pursue their academic interests and develop their leadership skills, and where every student is known, mentored, and encouraged.







## Covington, Georgia

Just one mile from Oxford College, Covington is a small city with historic roots and a modern energy that's perfect for fun with friends or service learning.

### EXPLORE AND HAVE FUN

- Covington's picturesque town square offers shopping, restaurants, concerts, and events.
- Students are involved in the community through schools, civic groups, faith-based organizations, and city committees.
- 200+ movies and TV productions have been filmed in Covington.
- Newton Trails, a local nonprofit, is working to connect the entire Newton County community, including the Oxford Trail.

### ADD TO YOUR RESUME

**20+** *Covington-area organizations work with Oxford students for community-based service-learning opportunities.*

**GAIN EXPERIENCE AT LOCAL ORGANIZATIONS:** Bridgestone Golf, Takeda Pharmaceuticals, Meta, General Mills, Cinelease Studios—Three Ring

## OXF



# Apply to Emory College, Oxford College, or *both*.

## Join Emory’s community of bright, curious students.

You can apply with one application and one fee, and we accept the Common App and QuestBridge. No matter which educational path you choose, you’ll gain the experiences and tools you need to make a difference in the world.

### HOLISTIC APPLICATION REVIEW

Our application review is comprehensive, valuing more than just academics.

ACADEMIC PREPARATION  
*Curriculum / Grades / Test Scores (Optional)*

PERSONAL ATTRIBUTES

LETTERS OF RECOMMENDATION

NON-ACADEMIC ENGAGEMENT

INTELLECTUAL CURIOSITY AND ENGAGEMENT

STUDENT WRITING

### ADMITTED CLASS OF 2029 PROFILE

For the 2025–2026 application cycle, Emory University is using a test-optional policy.

Emory College <sup>ATL</sup>		Oxford College <sup>OXF</sup>	
1500–1560 <i>Middle 50% SAT Score</i>	37,561 <i>Applicants</i>	1490–1550 <i>Middle 50% SAT Score</i>	23,890 <i>Applicants</i>
33–35 <i>Middle 50% ACT Score</i>	3,869 <i>Accepted</i>	33–35 <i>Middle 50% ACT Score</i>	3,188 <i>Accepted</i>
3.83–4.0 <i>GPA (unweighted)</i>	1,502 <i>Enrolled</i>	3.8–3.99 <i>GPA (unweighted)</i>	568 <i>Enrolled</i>
<i>Data as of June 2025</i>		<i>Data as of June 2025</i>	

# Education *within reach.*

Emory meets 100% of demonstrated financial need without loans.

For first-degree domestic undergraduate students, Emory has eliminated need-based loans and replaced them with institutional grants using the Emory Advantage program.

2024–2025  
FINANCIAL AID DATA

\$255M

Total undergraduate grant and scholarship aid

18%

Pell Grant recipients

52%

Undergraduates receiving grants and scholarships



Learn more at [studentaid.emory.edu](https://studentaid.emory.edu)

APPLY FOR  
NEED-BASED AID

When you start your admission application, you should also start your financial aid application. Some Emory students also receive funds from merit-based programs and outside scholarships. A financial aid application includes the following:

- CSS Profile
- Noncustodial Parent Profile (if applicable)
- FAFSA
- Tax Return

APPLY FOR  
MERIT-BASED AID

**Emory University Scholar Programs**

Partial to full scholarships for academically exceptional, creative, and curious servant-leaders. Submit your application by November 15 to be considered.

CALCULATE YOUR COST

Estimate how much your family may be expected to contribute toward your college costs and what types of financial aid you might qualify for. Use our tools such as Net Price Calculator and MyIntuition at [studentaid.emory.edu/undergraduate](https://studentaid.emory.edu/undergraduate).

2025–2026 APPLICATION DEADLINES

	EARLY DECISION I	EARLY DECISION II	REGULAR DECISION	FALL TRANSFER
Application Plan				
Application Deadline	November 1	January 1	January 1	March 15
Financial Aid Deadline	December 3	January 7	February 11	March 18
Decision Notification	By December 15	By February 15	By April 1	By early May

## ATLANTA CAMPUS



# Majors, minors, *and more.*

KEY: ■ MAJOR ▲ MINOR ● JOINT MAJOR ★ DEGREE PROGRAM

## MAJORS AND MINORS

African American Studies ■▲  
African Studies ■▲  
American Studies ■▲  
Ancient Mediterranean Studies ■▲  
Anthropology ■▲  
Anthropology and Human Biology ■  
Applied Mathematics ■▲  
Applied Mathematics and Statistics ■  
Arabic ■▲  
Architectural Studies ▲  
Art History ■▲  
Artificial Intelligence ▲  
Astronomy ▲  
Biology BA or BS ■  
Biophysics ■  
Business ▲  
Business Administration BBA ★  
Business Administration and Data Science ●  
Catholic Studies ▲  
Chemistry BA or BS ■  
Chinese Studies ▲  
Classical Civilization ■▲  
Classics ■  
Classics and English ●  
Classics and History ●  
Classics and Philosophy ●  
Community Building and Social Change ▲  
Comparative Literature ■▲  
Computer Informatics ▲  
Computer Science BA or BS ■▲  
Dance and Movement Studies ■▲  
Data Science ■▲  
East Asian Languages and Cultures (Chinese) ■  
East Asian Languages and Cultures (Japanese) ■

East Asian Languages and Cultures (Korean) ■  
East Asian Studies ■▲  
Economics ■▲  
Economics and Computer Science ●  
Economics and Human Health ●  
Economics and Mathematics ●  
Engineering Sciences ■  
English ■▲  
English and Creative Writing ■  
English and History ●  
Environmental Sciences BA or BS ■▲  
Ethics ▲  
Film and Media ■▲  
Film and Media Production ▲  
French Studies ■▲  
German Studies ■▲  
Global Development Studies ▲  
Global Health, Culture, and Society ▲  
Greek ■▲  
Hebrew ▲  
Hindi ▲  
History ■▲  
History and Art History ●  
Human Health ■  
Interdisciplinary Studies in Society and Culture ■  
International Studies ■  
Italian Studies ■▲  
Japanese ▲  
Jewish Studies ■▲  
Korean ▲  
Latin ■▲  
Latin American and Caribbean Studies ■▲  
Linguistics ■▲  
Lusophone Studies ▲  
Mathematics BA or BS ■▲  
Mathematics and Computer Science ●  
Mathematics and Political Science ●

Mediterranean Archaeology ▲  
Middle Eastern and South Asian Studies ■▲  
Music ■▲  
Neuroethics ▲  
Neuroscience and Behavioral Biology ■  
Nursing BSN ★  
Nutrition Science ▲  
Persian Language and Literature ▲  
Philosophy ■▲  
Philosophy and Religion ●  
Philosophy, Politics, Law ■  
Physics BA or BS ■▲  
Physics and Astronomy BA or BS ■  
Playwriting (Creative Writing and Theater) ●  
Political Science ■▲  
Predictive Health ▲  
Psychology BA or BS ■  
Psychology and Linguistics ●  
Public Policy Analysis ■▲  
Religion ■▲  
Religion and Anthropology ●  
Religion and Classical Civilization ●  
Religion and History ●  
Religion and Sociology ●  
Rhetoric, Writing, Information Design ▲  
Russian and East European Studies ■▲  
Science, Culture, and Society ▲  
Sociology ■▲  
Spanish ■▲  
Spanish and Linguistics ●  
Spanish and Portuguese ■  
Sustainability ▲  
Sustainability Sciences ▲  
Theater Studies ■▲

Visual Arts (Integrated) (Co-Major) ■  
Women's, Gender, and Sexuality Studies ■▲

## JOINT AND DUAL DEGREE PROGRAMS

Accounting BBA + MAcc  
Bioethics BA/BS + MA  
Business Analytics BBA + MSBA  
Engineering BA/BS/BBA + BSE Dual Degree with Georgia Tech  
Nursing BA/BS + BSN Dual Degree

## 4+1 PROGRAMS

BA/BS + MiM  
BA/BS + MSBA  
BA/BS/BBA + MF  
Bioethics BA/BS + MA  
Biostatistics BA + MSPH  
Cancer Biology and Translational Oncology BS + MS  
Computer Science BA/BS + MS  
Economics BA + MS  
Environmental Sciences and Environmental Health BS + MPH  
Human Health/ Epidemiology BA + MPH  
Mathematics BS + MS

## SPECIALIZED ADVISING

Business Administration BBA  
Dentistry  
Law  
Medicine  
Nursing BSN  
Optometry  
Pharmacy  
Physical Therapy  
Physician Assistant  
Podiatry  
Public Health  
Theology  
Veterinary Medicine

## BBA CURRICULUM ★

### Functional Depths

Accounting  
Finance  
Information Systems and Operations Management  
Marketing  
Organization and Management

### Interdisciplinary Depths

Analytic Consulting  
Business Analytics  
Business and Society  
Consulting  
Entrepreneurship  
International Business  
Real Estate

### Collaborative Concentrations with Emory College

Arts Management  
Business across Disciplinary Boundaries  
Environmental Management  
Film and Media Management  
Health Innovation

*Academic offerings are subject to change from year to year. Visit [apply.emory.edu/majors-minors](http://apply.emory.edu/majors-minors) for the most up-to-date list. List accurate as of August 2025.*





Office of Undergraduate Admission

3263-001-1AA (omit for UPS, FedEx)  
1390 Oxford Road NE  
Atlanta, GA 30322-1016

T: 404.727.6036  
F: 404.727.4303

admission@emory.edu  
apply.emory.edu

Engage with Us

  @emoryadmission

 @admission.emory

 @lifeatemory

 blog.emoryadmission.com

Join Our Mailing List

[apply.emory.edu/discover/  
contact/connect.html](http://apply.emory.edu/discover/contact/connect.html)



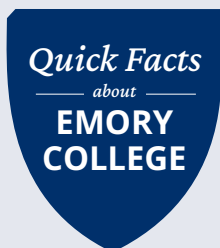
Download Our Brochure

[apply.emory.edu/roadpiece/  
Emory\\_Digital\\_Brochure.pdf](http://apply.emory.edu/roadpiece/Emory_Digital_Brochure.pdf)



Self-Guided Tour

[visitour.io/emory-university](http://visitour.io/emory-university)  
or text VisitEmory to 58052



5,567 *Total students*

1,502 *First-year students*

100% *of majors offer  
research opportunities*

83% *of students volunteer*

140+ *majors and minors*

No. 1 *Best Quality of Life  
(Princeton Review)*

No. 3 *Best College Dorms  
(Princeton Review)*

# Hello!

DISCOVER THE ULTIMATE EMORY EXPERIENCE  
AT YOUR CAMPUS BOOKSTORE

Three floors of Emory essentials—spirit wear,  
gifts, supplies, and more! The perfect stop on  
your campus visit.



Scan to shop online:  
[emory.spirit.bnccollege.com](http://emory.spirit.bnccollege.com)

Please enjoy 10% off your  
purchase. Use Code **HELLO25**

10% discount valid on your entire purchase, in store or online. To redeem in store, present this coupon to the cashier at checkout. Offer not valid on textbooks, Apple® products, technology, diploma frames, regalia, sideline merchandise, premium brands (including, but not limited to, Lululemon, Johnnie-O, Peter Millar), and gift cards. Cannot be combined with any offer or promotion and not valid on clearance merchandise. One offer per customer. One time use only. Offer expires on 12/31/26. Other exclusions may apply, see step for details. Enter coupon code: **HELLO25**

