

Independent Herald

DOES YOUR TV RECEPTION GIVE YOU A HEADACHE?
Get your TV reception problems fixed by our experts. Free TV reception tests on your system to ensure you have the best possible picture available using our professional test equipment.
WE COVER THE GREATER WELLINGTON AREA Wellington, Porirua, Hutt Valley and Kapiti areas. We have over 15 years on the road.
FREEVIEW DIGITAL/SATELLITE TV We can provide you with local and around the world television and radio stations with no monthly charges.
WHOLESALE/RETAIL SALES Aerials, satellite dishes, receivers and accessories
TV1, TV2, TV3 and TV4 Not only do we provide a full warranty, but we also guarantee that you will be satisfied with the results!
www.aerialmaster.co.nz
Phone 499 5353
 **AERIAL MASTER**
SPECIALISING IN TELEVISION RECEPTION

Thursday April 30, 2026



Today 6-15



Friday 9-15



Saturday 8-16



Sunday 10-15

Phone: (04) 587 1660

Great turnout



By Frank Neill

The three local ANZAC Day commemorations attracted a great number of people on 25 April.

People gathered in large numbers at the Mākara War Memorial, the Johnsonville Salvation Army and Karori West Normal School for the Karori RSA's service.

Continued on page 2.

The ANZAC parade marching down Johnsonville Road. Photo: Frank Neill.

GREAT MEAT! GREAT SAVINGS

Fine Meats Delivered to your Door

www.meatdirect.co.nz 04 479 9491
orders@meatdirect.co.nz



MEAT DIRECT
NEW ZEALAND'S FINEST MEATS DELIVERED TO YOUR DOOR

Be inspired

SUN 3 MAY MARS DEN OPEN DAY



- + Smaller classes
- + Exceptional teaching and support
- + Rigorous, future-focused learning
- + Intentional wellbeing education
- + Outstanding academic results

marsden.school.nz/register

Girls Years 1-13, Co-ed Preschool • 2027 scholarships open

Marsden *Inspiring Girls*



**SAMUEL
MARS DEN
COLLEGIATE SCHOOL**

How to reach us

Independent
Herald

Phone (04) 587 1660

www.independentherald.co.nz

**REPORTER**

Frank Neill

herald@wsn.co.nz

027 490 3916

**NATIONAL SALES**

Les Whiteside

les@wsn.co.nz

021 360 008

**SALES**

Steve Maggs

steve@wsn.co.nz

027 765 8303

**SALES**

Brenda Ingram-Johnson

brenda@wsn.co.nz

021 640 152

CLASSIFIED SALES

classifieds@wsn.co.nz

Lives of sacrifice, courage and love

Continued from page 1.

The Johnsonville commemoration began with a parade that ran down Johnsonville Road from Burgess Road to the Salvation Army car park.

Led by the Wellington Red Hackle Pipe Band, the marchers included Scouts, Guides and members of community groups, as well as Fire and Emergency New Zealand (FENZ) personnel.

The parade began at 9:45am and was followed by the remembrance service at 10am.

The huge crowd was welcomed by the Johnsonville Salvation Army corps officer Major Matt Badger.

Squadron Leader Bill Dewar presented the ANZAC address.

His message was entitled "Why it's important to remember the fallen".

"It is good to be here today, to join with you to remember these young people who left our shores to travel to the uttermost ends of the earth, to fight, to suffer, and to die, for freedom and for justice and for peace," he said.

"The places where they went are written indelibly on our national consciousness: Anzac Cove and Chunuk Bair, the Somme, Messines, Ypres, Passchendaele ... and then 20 years later, Greece and Crete, Egypt, Libya and Tunisia, Italy, the skies above Europe and the Pacific, oceans around the world, and more recently Korea, Malaya, Vietnam, the Middle East, East Timor and Afghanistan.

"This service today is not here to remind us of the battles, or the glory of war or the medals. No, it reminds us of those who never came home.

"It also reminds us of those who did come home who had to carry (along with their families) the physical and emotional scars of war for the rest of their lives.

"So, by being here this morning it reminds us of these heroic men and woman, who lived



The ANZAC parade marching into the Johnsonville Salvation Army car park.
Photo: Frank Neill.

a short life of sacrifice, courage and love," Squadron Leader Dewar said.

In his famous poem 'In Flanders Field' Lieutenant Colonel John McRae "challenges all of us to take the torch to accept the challenge to strive to make this world a better place, to see our freedom intact and to know peace in our time.

"How will you and I take the torch and what will we do with it?"

"One way we can do this is to see the torch as a symbol of the way that we should live our lives, lives that are focused on sacrifice, courage and love which Jesus did during his journey here on earth.

"With regards to sacrifice; let us hope and pray that we will never experience the ultimate sacrifice these young soldiers made, but we may be called to sacrifice our time and our money or something that is important to us so that we can help those who are struggling to live in a world that has plenty for all.

"With regards to courage, there are times we need to stand up for our fellow human beings who have been mistreated, or who have become addicted to drugs, pornography and other harmful substances.

"We need to have the courage to stand up against these things and institutions who promote them and say enough is enough, we will stop you polluting this world.

"With regards to love, we should be more willing to love one another rather than criticise each other.

"Our love should have us care not only for those in our whānau but also the people in our neighbourhood.

"Sadly, we are becoming a world that only cares for number one.

"When this happens, our homes are being destroyed, and all too often, our neighbours live a lonely life, and sometimes they die alone.

"What an awful way to go.

"God calls out to us to be the best that we can be, and the only way that is going to happen is if we embrace his love, which is a love of sacrifice and courage.

"So this morning and in all the mornings that we live in, we need to remember those who gave the ultimate sacrifice, their lives.

"And as we remember, let us acknowledge the responsibility that we have by picking up our torch of sacrifice, courage and love so that we too can make this world a better place to live in," Squadron Leader Dewar said.

The Salvation Army Central Fellowship Band accompanied the singing at the Johnsonville service, which also included the Newlands College Head Boy Geoffrey Brown and Head Girl Sophia Whiteman reading the names of the Johnsonville soldiers who gave their lives in World War One and World War Two before reading the poem 'In Flanders Field'.

The annual Karori RSA ANZAC Day service again had a fantastic turnout, with people both inside and outside the Karori West Normal School hall.

The guest speaker was Captain (retired) Jeremy Seed, who said that "ANZAC Day is not only about what happened then. It's about what families carry now."

Laurice Gilbert read a poem, Sergeant (Retired) Chris Selley rendered the Last Post, Rev Lance Lukin presented a special prayer and final blessing, and soprano and birthday girl Matilda Wickbom sang the New Zealand and Australian national anthems.

Small Ads, Big Impact.

Behind every local ad is a business
that believes in community.
Let's return the favour.

Independent
Herald

Phone (04) 587 1660

SALES

Steve 027 765 8303 E: steve@wsn.co.nz

Brenda 021 640 152 E: brenda@wsn.co.nz

Les Whiteside 021 360 008 E: les@wsn.co.nz

REPORTER Frank Neill 027 490 3916 E: herald@wsn.co.nz

www.independentherald.co.nz

Kiwi welcomed at Parliament

By Frank Neill

Five wild kiwi were welcomed at Parliament on 28 April, the first time that kiwi (birds rather than people) have been at the House of Representatives.

The birds were welcomed to the capital during a celebration of Capital Kiwi Project releasing the 250th wild kiwi into the hills around Wellington.

Before Capital Kiwi began reintroducing kiwi to Wellington in November 2022 they had been extinct in the region for 150 years.

Several hundred people attended the event, where iwi mana whenua led the pōwhiri.

The Minister of Conservation, Tama Potaka, welcomed the five kiwi in his speech, which was followed by a speech from Capital Kiwi Project founder Paul Ward.

“We are here today to welcome our 250th kiwi,” Paul said.

“The fact that we are talking about 250 kiwis being released today is beyond our wildest expectations of just a few years ago.”

The kiwi releases is a project that would not have been possible “without the support of Wellington people.

“One of the things that projects like Capital Kiwi demonstrate is what’s possible when we work together.”

Many individuals and organisations had been involved in working together to ensure the success of the project.

That included local land owners giving permission for trapping to take place on their land.

There were 5,300 traps from Red Rocks to Porirua – “the largest

intensive stoat trapping in New Zealand.”

That has been vital to the success of Wellington’s kiwi population, as almost every wild chick dies before it is big enough to fend off a stoat.

“The key metric in our DOC permit to provide confidence that a wild population is viable is a chick survival rate of 30%.

“The project has achieved over 90% chick survivorship now.

“That is an unprecedented kiwi survivorship in modern times,” Paul said.

The birds represent collaboration with sanctuary source sites (Sanctuary Mountain Maungatautari, Taranaki kōhanga kiwi at Rotokare, Ōtorohanga Kiwi House), gifting iwi and kōhanga programmes.

“These relationships, and this work done by partners, has enabled us to re-wild our national symbol at pace and scale beyond fences,” Paul said.

“The Capital Kiwi Project area represents the largest addition of suitable, predator-controlled landscape to kiwi conservation.”

Paul said the 250th kiwi marked the end of the project’s first translocation permit. With a strong success record now behind it, he said the project was entering its next phase where opportunities for further taonga species to be restored to the landscape were well developed.

The ‘kotahitangi kiwi’ model has inspired other projects across the country and Capital Kiwi is actively supporting that work.

Paul said that while species restoration projects needed to celebrate accomplishments, success must be measured over generations.

The project success to date, he said, must not cloud the truth



Rawiri Walsh from the Capital Kiwi Project showing a kiwi to people attending the Parliamentary welcome of the birds to Wellington. Photo: Frank Neill.

that without pest control, the country’s wild kiwi populations remain in decline and on track for extinction.

“That is our challenge to the people of New Zealand.

“Kiwi are back home on these hills, and thriving, but across the country without help from us, almost every wild kiwi chick dies before it is big enough to fend off a stoat.

“The future of kiwi, and our other taonga species, depends entirely on how much we value

them.

“They are intrinsic to our sense of identity and belonging here; of what makes our people and our country so special – they are us.

“Aotearoa is their only home. They can thrive here, but it requires our commitment, investment and our action.

“If we can successfully bring wild kiwi home to our capital city after 150 years of extinction, what other challenges can we meet by working together?”

Identified

The body found following the search in south Karori has been formally identified as Philip Sutton, Wellington District Prevention Manager Inspector Fleur de Nes announced on 23 April.

Following the heavy rain that hit Wellington overnight on Saturday 19 April and Sunday 20 April, Mr Sutton was reported missing at around 7:15am on 20 April.

That led to an extensive search for him on 20 and 22 April.

His Suzuki Swift was found in Karori Stream at about 11am on 22 April and his body was discovered further along the coast about an hour later.

Philip’s death has been referred to the Coroner.



Wise readers support their advertisers. They help keep your local news flying!

Independent Herald

Phone (04) 587 1660

SALES

Steve 027 765 8303 E: steve@wsn.co.nz

Brenda 021 640 152 E: brenda@wsn.co.nz

Les Whiteside 021 360 008 E: les@wsn.co.nz

REPORTER Frank Neill 027 490 3916 E: herald@wsn.co.nz

www.independentherald.co.nz



Greg O'Connor MP for Ōhāriu

Spokesperson for Courts and Veterans' Affairs
Assistant Speaker

Get in touch

My office is open 9am - 4pm
Monday to Friday

04 478 3332

greg.oconnor@parliament.govt.nz

2/18 Moorefield Road, Johnsonville, Wellington

Labour.org.nz/gregoconnor

f /GregOhariu



Authorised by Greg O'Connor MP,
Parliament Buildings Wellington.

Kids rocking for Sudan

A group of 13 year-olds in Wellington are once again turning passion into action with the launch of Kids Rock 4 Sudan, a one-day, youth-led music fundraiser dedicated to supporting children and families affected by the crisis in Sudan.

Following the success of their previous event, Kids Rock 4 Palestine, which raised over \$10,000 for children in Gaza, lead organiser Eddie is now focused on raising vital funds for emergency aid and community-led initiatives in Sudan.

These include support for displaced families and programs assisting women and children

facing the impacts of conflict. "Kids Rock 4 Sudan is about showing that young people care," Eddie says.

"Music can be a powerful way to take action, and compassion has no age limit."

The event will take place on 3 May at Meow in Wellington and will feature live performances by young musicians, creating a vibrant, youth-driven space for solidarity and awareness.

Funds raised will go to Hope and Haven Refugees, supporting their work with displaced communities.

Tickets are available at <https://meow.flickit.co.nz/events>.

Zoo welcomes baby chimp

Te Nukuaio Wellington Zoo staff have welcomed the newest addition to the Zoo whānau: a baby Chimpanzee.

The as-yet unnamed female Chimp was born in the early hours of Good Friday to first-time mum Malika.

"The team arrived at work on the Friday morning and we said to ourselves, 'Is that an arm?'" recalls Te Nukuaio Wellington Zoo Primate Team Leader, Harmony Neale.

"Malika had delivered her baby some time overnight, which was a wonderful surprise for everyone in the primate team."

While the baby girl is a few weeks premature, Harmony says she is doing well.

"We suspect she's about three weeks prem. "It was tough and go for the first few days, but Malika has worked hard to make sure her baby is feeding and resting as much as possible.

"It's been so lovely watching Malika take to motherhood so naturally, and her efforts being rewarded with a baby that's getting stronger by the day."

The rest of the troop has welcomed the baby Chimp's arrival.

"The other Chimps in the troop are quite inquisitive but they're also very good at giving Malika and her baby the space they need.

"Akida is a bit jealous though. He's only four and isn't used to not being the baby of the troop and the centre of attention any more."

Te Nukuaio Chief Executive Karen Fifield MNZM says the arrival of all baby animals is exciting, but this birth is extra special.

"Not only was the baby Chimp born over Easter, but she was also born on the late Dr Jane Goodall's birthday, and the inaugural Jane Goodall Day," says Karen.

"Jane was one of the world's most influential environmental voices.

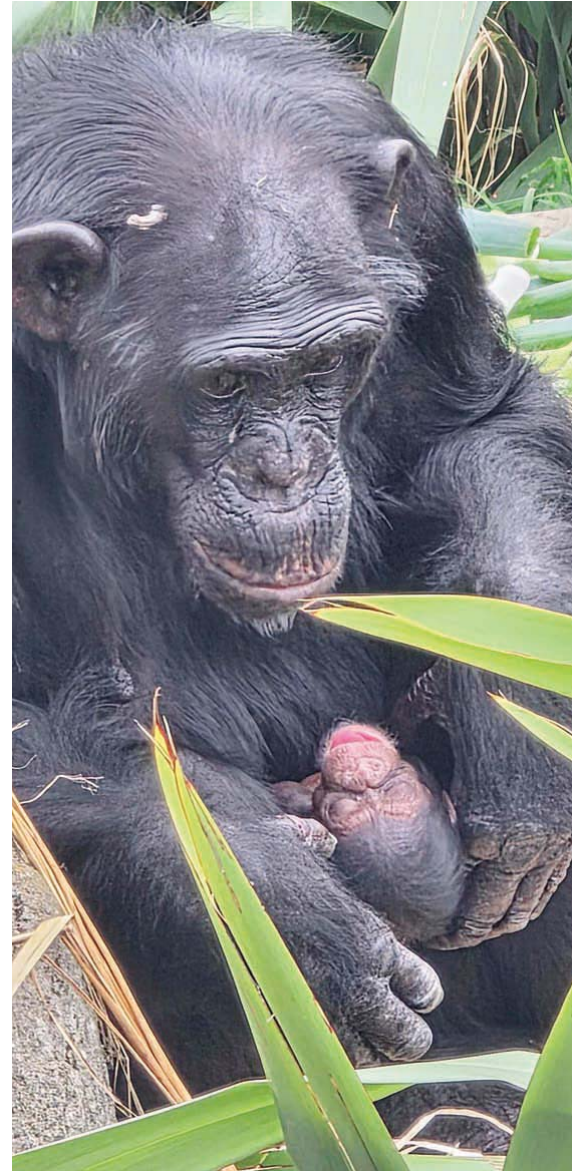
"She taught the world about the ethical treatment of animals, emotional intelligence in non-human species, particularly primates, and the moral responsibility humans have to care for the planet and everything that lives on it.

"It's perfect timing that this tiny Chimp was born on her birthday."

The baby's name will be confirmed after consultation with the Zoo's international conservation partner, Fauna and Flora Liberia Programme.

The Zoo will then invite the Wellington community to help choose a name.

Visitors may catch a glimpse of the baby



Malika the Chimp with her new baby. Photo: Anya Batt, Te Nukuaio Wellington Zoo.

Chimp next time they visit Te Nukuaio Wellington Zoo. The most likely time is during daily Chimp talks at 12:45pm.

For more information about Te Nukuaio Wellington Zoo and to book tickets, visit wellingtonzoo.com.

Karori Lions clean up



Ten of the Karori Lions who picked up litter from streets, the mall and parks on ANZAC Day. Photo: Supplied.

The Karori Lions were out and about collecting litter from streets, the mall and park areas of Karori on Saturday 25 April as part of a worldwide Lions Environment Week of Service.

Originally planned for the previous Saturday, the collection was cancelled due to the extreme weather event.

Not daunted, the Lions regrouped on Anzac Day after-

noon to pick up the rubbish.

Karori Lions have been serving the Karori and the wider Wellington community since 1969.

It is one of 50,000 Lions Clubs worldwide.

To join with the club in helping people and doing useful things together, see the club's Facebook page at www.facebook.com/KaroriLionsClubInc.

NEWS TIPS

Send your tips to herald@wsn.co.nz

DIGNITY, SENSITIVITY AND THE RESPECT YOUR LOVED ONES DESERVE.

Proud to have served the families of Wellington for over 135 years, we are committed to providing quality, personal service with compassion and integrity. Contact us about pre-planning and pre-payment options.

Wellington: 306 Willis Street
Ph 385 0745

Johnsonville: 7 Johnsonville Road
Ph 477 6855

Karori: 89 Karori Road
Ph 476 6472

LYCHGATE FUNERALS

www.lychgate.co.nz

We Have Moved

Just Blinds

Showroom:
405 Hutt Road, Alicetown, Lower Hutt

BLINDS FOR YOUR HOME AND OFFICE

- Exciting new fabrics
- Wide range of blinds
- Colour consultancy
- Installation - Repairs
- 3 year guarantee

FREE measure and quote

Hours: Mon-Fri 9.00am-4:30pm, Sat 10am-2pm

TRANSFORM YOUR VIEW TODAY

sales@justblinds.co.nz

Ph: 04 472 9920 - www.justblinds.co.nz

Your local trusted community newspaper!

Phone (04) 587 1660

www.independentherald.co.nz

Helping people with breast cancer



A scene from a past Pink Ribbon Breakfast. Photo: Supplied.

Local residents are being invited to gather with friends, family and colleagues this May to host or attend a Pink Ribbon Breakfast to raise vital funds for Breast Cancer Foundation NZ.

Pink Ribbon Breakfast is the Foundation's largest annual fundraiser.

It encourages people to connect over a shared meal to make a difference for New Zealand women affected by breast cancer.

Around 390 women are diagnosed with breast cancer every year across the greater Wellington region.

Hosting a Pink Ribbon Breakfast is a meaningful way to support them, helping fund groundbreaking research, free patient services and early detection education.

Ah-Leen Rayner, chief executive of Breast Cancer Foundation NZ, says the flexibility of Pink Ribbon Breakfast means anyone can get involved.

"We know many households are feeling the pressures of rising living costs right now, but

hosting Pink Ribbon Breakfast doesn't have to be fancy or expensive," Ah-Leen says.

"It can be as simple as a morning tea at home or work, or catch-up at your local cafe. What's important is coming together, because every effort counts.

"As a charity that doesn't receive any government funding, we desperately need more hosts to make sure our programmes can continue supporting the thousands of Kiwi women who rely on them.

"Every dollar raised makes a massive difference. By hosting a Pink Ribbon Breakfast, you're turning coffee and conversation into something powerful."

Pink Ribbon Breakfast Day is 21 May, but events can be held any time throughout the month. Once registered, people will be sent a free host kit with ideas and resources to get them started.

For more information and to register to host a Pink Ribbon Breakfast, visit pink-ribbonbreakfast.co.nz. Registrations close on 31 May.

Independent Herald
Our community. Our stories. Our voice.

Follow us on Facebook
www.facebook.com/IndependentHerald

PUKU PIES & KAI

NOW IN JOHNSONVILLE

Mon - Fri: 7am to 4pm
Sat - Sun: 8am to 4pm

22 BRODERICK RD
TEL 04 384 6652



Whitby Collegiate 2027 SCHOLARSHIPS

Available for new Year 7 & 9 students

Apply Online by Sunday 17 May

whitbycollegiate.school.nz/scholarships





REMEMBRANCE

ANZAC DAY, 25 APRIL 2026



Local Guides and Scouts as they marched into Karori West Normal School for the Karori RSA's ANZAC Day service. Photo: Supplied.



The Newlands College Head Boy Geoffrey Brown and Head Girl Sophia Whiteman laying a wreath. Photo: Frank Neill.



The wreaths that were laid at the Johnsonville ANZAC Day service. Photo: Frank Neill.



Squadron Leader Bill Dewar places a wreath during the Johnsonville ANZAC Day service. Photo: Frank Neill.



Local scouts and their flags marching into the Johnsonville Salvation Army car park. Photo: Frank Neill.

Lance the Locksmith

Lance is a licensed, bonded, and insured locksmith with over 40 years of experience.



Residential Locksmith Services Include:

- Unlock Doors/ Rekey Locks
- Locks Fitted / Replaced
- Remove Broken Keys
- Emergency Locksmith



Phone Number 021 188 8048



REMEMBRANCE

ANZAC DAY, 25 APRIL 2026



The Salvation Army Central Fellowship Band accompanying the singing at the Johnsonville ANZAC Day service. Photo: Frank Neill.



The Johnsonville Salvation Army corps officer Major Matt Badger speaking at the Johnsonville ANZAC Day service. Photo: Frank Neill.



A section of the large crowd that attended the Johnsonville ANZAC Day service. Photo: Frank Neill.



Phil Daly playing the last post at the Johnsonville ANZAC Day service. Photo: Frank Neill.



The new trend in fencing

- STYLE
- DURABILITY
- WIDE RANGE
- AVAILABLE NOW

CALL 04 566 2253

201 Gracefield Rd, Seaview, Lower Hutt
orders.wgtn@metalcrafteroofing.co.nz

COLORSTEEL
NEW ZEALAND'S FAVOURITE ROOF

Metalcraft
Fencing

Song about recovery being released

By Frank Neill

Wellington cross-genre trio Shivers will release their new single 'Ready' tomorrow, 1 May, to mark the beginning of NZ Music Month.

The song is written by Shivers member Timmy Porter, who has continuing very strong links to Wellington's western suburbs.

Timmy has lived in Karori, attended Wellington Teacher's College and has been a Kindergarten teacher in both Northland and Wadestown.

His song tells a very personal story.

"A few years ago I suffered a traumatic brain injury when I fell in my shower," Timmy says.

"I fractured my skull in three places and caused a brain bleed. 'I nearly died.'"

Following the injury his health was so bad "I thought I was gone," he says.

"My wife thought she'd have to basically be a carer for me."

In addition to the injury "I had crippling anxiety. I couldn't even answer the door for a courier," Timmy says.

"I thought my life was over and

I thought music was over, which is my sense of identity and my purpose in life."

However Timmy then got to the stage in his recovery where he thought he was well enough to make music.

"I was lucky enough to make music again with whānau and friends and the Shivers boys around me.

"That's where the song ['Ready'] stemmed from.

"It's in regards to my recovery from brain injury.

"I never thought I'd be able to re-emerge into the world. 'Ready' is me saying I am back and ready to live my life again."

Shivers, Timmy says, is a "genre fluid" group, with influences from a variety of different styles of music. They have a strong focus on "music with meaning" and "we have a real strong sense of social justice," Timmy says.

Shivers' two other members are Adrian Win (Ngāti Hāua, Ngāruahine, Te Ātiawa), and producer/keyboardist Josh Parata (Te Ātiawa ki Whakarongotai, Ngāti Toa Rangatira, Te Rarawa).

'Ready' marks a new chapter for the band as they head towards their upcoming EP, opening up



Shivers, who will release their new single 'Ready' tomorrow (from left) Adrian Win, Josh Parata and Timmy Porter. Photo: Supplied.

about mental health and anxieties experienced with the recovery process.

Timmy says the trio will be releasing their new EP later in the year.

"Music as an art is a great way to express and acknowledge what is happening in our world and in our communities," Adrian says.

"If we can share our inner thoughts and connect with others in their interpretations, then we have done our job as artists."

The very well known producer Tiki Taane says the release is a testament to Shivers' individual and collective musicianship.

"Recording 'Ready' was an absolute joy. "The vibe in the room with Shivers and Dr Lee Prebble was something special, and having the space to capture it live and naturally made the whole experience unforgettable.

"This has been one of my favourite projects to mix and produce," Tiki says.

Your Local
Paper,
Powered by
You.

Every ad you see helps keep our stories alive. Support the businesses that support your news.

Independent
Herald

Phone (04) 587 1660

SALES

Steve 027 765 8303 E: steve@wsn.co.nz

Brenda 021 640 152 E: brenda@wsn.co.nz

Les Whiteside 021 360 008 E: les@wsn.co.nz

REPORTER Frank Neill 027 490 3916 E: herald@wsn.co.nz

www.independentherald.co.nz

Manawatū Nurse Takes Top Nursing Honour

Enliven Central are excited to share that Bini Mathew, a Clinical Nurse Manager at Brightwater and Willard Homes in Palmerston North, has been recognised by the Aged Care Association as Aotearoa's Nurse of the Year, at the Awards dinner held on 24 April.

This is wonderful recognition of Bini's dedication, compassion, and outstanding leadership in nursing. Enliven Central are truly fortunate that the residents of our Manawatū Homes experience her leadership and manaakitanga every day. Selected from five finalists, the award celebrates and honours the dedication, compassion, and leadership of nurses working in aged residential care across Aotearoa.

Aged Care Association CE Hon. Tracey Martin said, "She doesn't just talk about better care, she delivers it."

This is the second year that Enliven Central has had a nurse as a finalist, which speaks volumes about the quality of clinical care provided by the teams across the region.

Joe Asghar, CEO of Presbyterian Support Central, was quick to congratulate Bini, saying

she is an amazing ambassador for the Enliven Central whānau.

Mikaela Shannon, Enliven Central's Clinical Director, said she is proud of Bini and acknowledged the positive effect she has on residents, colleagues, and the community.

"It's been incredibly rewarding to see our CNM recognised as one of the five leading professionals. This achievement reflects not only her clinical excellence, but also her commitment to leadership, innovation, and improving outcomes for those we serve. Congratulations on this well-deserved recognition, Bini."

Bini places each resident's identity, history, and cultural values at the centre of every care decision.

Mikaela added: "Bini's leadership growth is evident in how she translates insight into action. She has moved beyond individual clinical practice to shaping systems and processes that embed cultural safety and high-quality care across the organisation.

Congratulations to Bini on this outstanding achievement, Enliven Central are proud to have her leading care across our Manawatū homes.



WE ARE BUYING NOW!

**UNWANTED OR BROKEN GOLD & SILVER
JEWELLERY, COINS, WAR MEDALS,
OLD BANKNOTES AND VINTAGE WATCHES**

DO YOU HAVE ANY OF THE ABOVE?

**GETTING OLDER? NEED TO START GETTING RID OF THINGS?
THEN ASK YOURSELF THESE QUESTIONS...**

- Shouldn't I be selling now at these extremely high gold and silver prices?
- Isn't money better off in my pocket rather than having things sitting around?
- Will the kids or grandchildren really want or appreciate them?
- Shall I give them the items or give them the money instead?
- Will a museum really want them considering how much they already have in storage?
- Will they be secure in an earthquake or other disaster?
- Do I have the expertise or inclination to try and sell them myself on the internet?

YOU KNOW THE ANSWERS - WE WANT TO BUY - SO CASH IN NOW!

JOHN BERTRAND (COLLECTABLES) LIMITED

LEVEL 1, HARCOURT'S BUILDING
215 MAIN ROAD, TAWA
WELLINGTON 5028

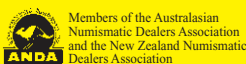
CALLERS BY APPOINTMENT ONLY PLEASE - AMPLE FREE STREET PARKING
Please bring suitable photo ID and bank account details

Tel: 04 232 9832 Or email: info@bertrand.co.nz



JOHN BERTRAND™
COLLECTABLES LTD

John Bertrand - The Trusted name in Numismatics Since 1965



Members of the Australasian
Numismatic Dealers Association
and the New Zealand Numismatic
Dealers Association



Whiplash effect of earthquakes

A new Victoria University study of 12 major earthquakes around the globe – including two big events in Aotearoa New Zealand – provides fresh evidence to show how big quakes stop and how this can significantly affect buildings.

The study investigated large strike-slip earthquakes that move land sideways, rather than up or down.

It found these quakes came to a halt abruptly, instead of slowly decelerating, and discovered a previously unrecognised “stopping phase”.

“Many of us will know a quake starts when a fault line ruptures. Perhaps less well known is that the size of a quake depends on where and when this rupture stops,” lead author Dr Jesse Kearse, a researcher in earth sciences at Te Herenga Waka - Victoria University of Wellington says.

“In our study, we’ve identified a distinct ‘stopping phase’ that can be detected in the ground movement at the end of big quakes.”

This stopping phase is caused by a sudden jolt in the opposite direction to the movement of the fault itself – like a “whiplash” effect.

The study findings have important implications for understanding the effects of earthquakes on buildings and other large structures in urban areas.

“The sharp backwards motion of the stopping phase can be huge, up to a metre in the case of the magnitude 7.8 Kaikōura

quake in 2016.

“These large movements that occur at the end of the fault are likely to be a generic feature of large strike-slip earthquakes and so need to be accounted for in hazard models,” Dr Kearse says.

The stopping process itself is largely hidden from view beneath the ground.

But by examining seismic recordings taken from near to where these big quakes halted, the researchers were able to discover the stopping phase – essentially the sound of the quake coming to an abrupt halt.

“This distinct sound hasn’t been noticed in many past earthquakes because of the limited number of seismic recorders capturing what’s happening.

“Our study has been able to make use of the growing capability of modern seismic networks that record details of quake events,” Dr Kearse says.

Results of the study also indicate large strike-slip quakes occur in a “cascade”, with movement along multiple segments of the fault.

“Strike-slip fault systems, such as the Alpine Fault in the South Island, are made up of a series of discrete segments.

“These segments may break independently in moderate-sized events, or link together in a larger quake that extends across hundreds of kilometres.

“Whether a quake remains confined to a single fault segment or grows into a multi-segment, large magnitude event ultimately



A building destroyed by a major earthquake. Photo: Supplied.

depends on whether the quake stops before spreading across segment boundaries,” he says.

Results of the study are published online in the journal Science.

The research was funded by the Japan

Society for the Promotion of Science, the Earthquake Research Institute at the University of Tokyo, and an Aotearoa New Zealand Tāwhia te Mana Research Fellowship administered by the Royal Society Te Apārangi.

News You
Can Trust.
Thanks to
Them.

Our advertisers make it possible to
share the stories that matter most.
Show them some love.

Independent
Herald

Phone (04) 587 1660

SALES

Steve 027 765 8303 E: steve@wsn.co.nz

Brenda 021 640 152 E: brenda@wsn.co.nz

Les Whiteside 021 360 008 E: les@wsn.co.nz

REPORTER Frank Neill 027 490 3916 E: herald@wsn.co.nz

www.independentherald.co.nz



Karori's new Community Constable, Chris Wake. Photo: Supplied.

Karori's new Community Constable

Karori has a new Community Constable, Chris Wake.

Chris works in the Community Policing Team, which is based in Johnsonville.

He is in his eighth year with the Police and his time has been spent on the front line and in the community space.

Chris is, he says, “excited to get amongst it. “If you see me out and about walking the

beat, please come up and say ‘hi’ as I’d love to chat with you.”

The Police, Chris says “have a few things we are planning in and around Karori. Watch this space.

“If you need to contact me with any thoughts in the meantime, you can email me at Johnsonville.cpc@police.govt.nz and I’ll get back to you.”

ACTIVE winter

Tora tracks and accommodation

The Tora Walk in the Wairarapa is 11km to The Last Resort accommodation, comprising "The Roost" and "The Old Place", returning the following day via a loop track. Visitors can add a 7-10km track heading down to the beach and

back, and stay for a second night.

Owners Ben and Georgie wanted to create a different kind of experience, "our land is rustic and charming, and we wanted to share that. The Walk is mostly through bush and the 360-degree

view from the top, or the sunrise from your bedroom makes this quite special" says Ben.


Perhaps the most unique aspect of The Last Resort is that bookings are exclusive, meaning visitors have the trail and accommodation all to themselves.

Wgtn a great place to explore

While Kiwis have a great country to get out and about in, Wellington is a great place to start.

The city is lucky being one of NZ's sunnier cities with Earth Science NZ showing it ranges between the first and second highest tiers of annual sunshine hours!

Contrary to an item from a separate news source early this year, Wellington is shown to have the edge for annual sunshine over some popular Wairarapa towns.



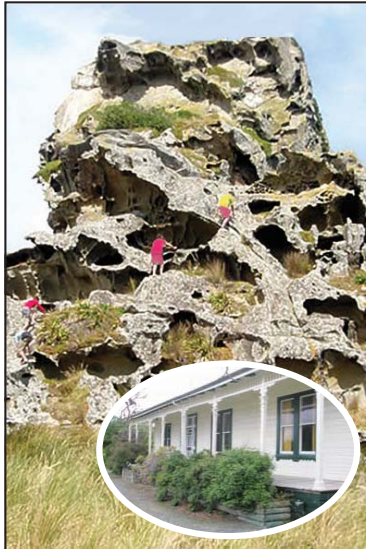
The Last Resort

A TORA ADVENTURE Wairarapa

- 2-3 day self-guided trail
- 22km loop track through native bush and farmland

Ph (06) 307 8885
lutbgriv@gmail.com
www.lastresortwalk.co.nz

NEWEST PRIVATE WALK IN THE WAIRARAPA!



Make a day of it at our renowned **HONEYCOMB ROCK AND COASTAL WALK** includes accommodation

We have a range of accommodation options while you're here



GLENBURN STATION

Glenburn Rd, Te Wharau, Wairarapa | Ph 06 372 7045
Email: info@glenburnstation.co.nz
www.glenburnstation.co.nz



Save \$50 PER NIGHT when you book direct

Your base for Central Plateau adventures

AWARD WINNING LUXURY 5 STARS ECO RETREAT

Nightsky Cottage Experience

Mead Lane, Horopito, Ohakune, Ruapehu Region
E: info@tongarirosuites.co.nz Ph: 021 828 077

GOLDFIELDS MINING CENTRE

CENTRAL OTAGO

State Highway 6, Cromwell



Situated on State Highway 6 in the picturesque Kawarau Gorge is the Goldfields Mining Centre, an historic site from 1862

We are open every day between 9am and 5pm for you to come and explore the goldfields, spend time with our tour guide learning the history and seeing the relic machinery working, and then of course try your luck at panning for gold.




Site admission: \$35.00 per adult
\$17.00 per child (5yrs-15yrs)

No booking necessary.

ROYAL ALBATROSS CENTRE

Book a tour with us today!



03 478 0499 Otago Peninsula
www.albatross.org.nz DUNEDIN



GARDENING THIS WEEK HOUSE PLANTS CARE IN WINTER: *By Wally Richards*

Winter can be a tough time for indoor plants if people don't recognise the problems that the plants face.

The factors that affect indoor plants are, light, temperature and moisture levels. These three factors are inter-linked and if they are not all correct in relationship to each other, then plants will be in a stress situation.

Lets consider each of these starting with light; Indoors light is what I call sidewise light, it is not overhead light but its natural light that comes sidewise through windows or glass doors.

All plants need a certain amount of light and they will always grow towards the light source.

Outside plants grow straight up, indoor plants tend to grow sideways.

The best light in a home is within a metre of a unshaded window facing in a northerly direction.

During summer with long hours of natural light daily, plants will do well and much of their foliage will be facing the window to trap all the light possible.

Once we move the same plant a couple of metres from the window, but still in line with the window, the light level the plant receives drops a fair amount and the plant stretches towards the window making it

lopsided.

Move the plant to the far side of the room and it is likely to be getting only about 10% of the light it was getting in the one metre zone.

A low light plant will be happy in that spot with all its leaves facing the window once it adjusts to its situation.

If we had a room that was pure white with all furniture white, the room would be quite dazzling to our eyes because of the amount of reflected light.(Plants would love it)

On the other end of the spectrum if we had a room that was totally black the room would appear dark to us except for the area immediately around a sunny window.

Indoor plants rely on a lot of reflected light and the lighter the colors in a room the better the plant will be for its light requirements.

When we look at the situation in midwinter our day light hours are down to 8 hours, about half the hours as we have in mid summer.

So naturally from this, plants are getting far less natural light in winter. This is why some plants do well in the summer months but fail in the winter with foliage browning or yellowing off, leaf drop and many tend to hibernate also.

Temperature in summer is higher and more constant in the plus 15 degrees area.

In winter the temperatures being lower (without artificial heat) is the factor that sends plants into a more dormant state. We have situations then, with people that are not home during the day and the room is cool to cold. On returning home to a cold room artificial heat is turned on raising the temperature to a nice level.

On retiring for the night the heating is often switched off and temperatures quickly drop to zero or a few degrees.

In the morning the room maybe warmed again for a short time and then allowed to return to the normal indoor temperature of the day.

This up and down temperatures does have an effect on the well being of the plants.

Next is moisture level and its an aspect that we have the control over completely.

Plants need moisture in the air to keep nice clean foliage.

When the air becomes too dry the plant keeps pushing moisture to the foliage to replace the moisture lost into the drying air.

Tips of leaves or the edges tend to yellow and brown when the plant



cannot replace sufficient moisture to the leaves. Especially noticeable in palms and ferns.

If we water the plants well, we have the problem that when the temperature drops they have cold wet roots which are prone to rotting.

Lack of good light, wide temperature swings and too much water in the mix is the death of many plants in winter. You can control to a degree two of these factors, ensure that plants that require good light are very close to (in front of) good light windows without net curtains.

I have had people tell me that their plant is getting good light because it is right near the window.

On further questioning it turns out the plant is either beside the window or below the window which is actually worse than being over the other side of the room.

It must be direct light on the foliage, through the window.

Low light plants such as philodendrons will be happier in less light spots, but a maidenhair fern would die down.

Keeping a steady temperature in winter can be expensive and a cost

when you are not at home to have benefit of the heat. Heating does dry the air and to overcome this, and take advantage of the fact, place a clothes horse in the lounge to dry that days washing. The drying of the clothes puts ample moisture into the air and helps to keep the plants happy.

If you run a dehumidifier your plants will suffer unless you compensate by say placing wet sphagnum moss on top of the potting mix and wetting it every day without actually watering the mix.

Bowls of water near plants is another way to ensure moisture in the air near the plant's foliage.

The biggest control in the three aspects that you have, is the moisture level of the potting mix. In winter it should never be wet, just evenly moist to nearly dry. If you have wide variations of temperature in a room keep the mix fairly dry with only little amounts of water applied when the plant is showing signs of lack of water. In rooms that heat comes on when you come home would be the time for a little drink which might be every few days to once a week or less.

enliven
PRESBYTERIAN SUPPORT CENTRAL



Vibrant community living in the heart of Karori



Price only

\$505,000

Enliven's Huntleigh Retirement Apartments in Karori, Wellington

- Newly refurbished 1 bedroom apartments
- Modern kitchen, bathroom & double glazing
- As your needs change, so can the support we provide as Huntleigh Home is right next door.

AVAILABLE NOW

Contact Anna to arrange a viewing
on 04 464 2020
visit: enlivencentral.org.nz



Relief fund following 10 April storm

A Mayoral Relief Fund launched to support people affected by the 20 April heavy rain and wind had raised more than \$250,000 by 11am on 29 April.

Including the Wellington City Council's contribution of \$100,000 the fund had reached \$256,106.55.

The fund is being administered by the Wellington City Mission and they had received 100 applications for funding by 28 April.

The fund is still open for public donations and they can be made via:

- Internet banking to the Wellington City Mission: bank account number 03-0547-0296036-17, bank account name "The Wellington City Mission Anglican Trust Board", reference "Relief Fund"
- Credit card through the Wellington City Mission website at wellingtontcitymission.org.nz/floodrelief.

Wellington Mayor Andrew Little is calling on Wellingtonians to add to the fund if they are able to.

"As the extent of the effects on residents and damage to property have become clearer, it is clear that many residents need financial support to help them," the Mayor says.

"Our fellow Wellingtonians – our neighbours – need our support. Every little bit helps families in need."

Wellington City Missioner Rev Murray Edridge welcomed the establishment of the Mayoral Relief Fund.

"Wellington has a reputation for extraordinary generosity to support those in the community who are in trouble," he says.

"Our hearts have gone out to those impacted by [the] week's floods and I am sure we will stand behind them in this recovery phase.

"The Wellington City Mission will also be accepting donations of furniture, household goods and appliances, that will be provided to those that need them.

"Unfortunately, the mission is not in a position to pick them up, so they will have to be dropped to Whakamaru at 4 Oxford Terrace, Mount Cook, Wellington," Rev Edridge says.

"One week after the deluge there's a lot of clean-up still happening for flood-affected residents and businesses," Wellington's Mayor Andrew Little says.

"Council has distributed around 700 one-tonne bags for residents to put their storm-related waste into.

"In partnership with the Wellington City Mission we've set up a Mayoral Relief Fund, and I really encourage Wellingtonians to give a donation if you're able to.

"The first few days of the fund have demonstrated the generosity and empathy of Wellingtonians, and I'm aware of a few big pledges that are yet to be received by the fund," the Mayor says.

Lots happening at the libraries

International bestselling Irish author Cathy Kelly will be in conversation with New Zealand author Catherine Robertson at Te Matapihi ki te Ao Nui Central Library from 5:30pm to 6:30pm on Thursday 7 May.

“Expect an evening of scintillating conversation, unique insights and behind-the-scenes stories of creating beloved tales that reach the widest of audiences worldwide, when these two writing sensations get down for a good chat,” Wellington City Libraries says.

“This is a free event, and all are welcome. We expect this event to be very popular and seating is limited, so please arrive early to ensure a seat.”

Cathy Kelly is a bestselling Irish author known for her stories about real women’s lives – the messy relationships, the love, the loss and everything in between.

She has written 22 novels, selling millions of copies globally. Her latest novel is ‘The Island Retreat’.

In addition to her writing, she is a UNICEF ambassador and lives and writes from her home in Bray, County Wicklow, Ireland, surrounded by her family, two dogs and a cat.

Catherine Robertson is a number 1 New Zealand bestselling author and a regular guest on Jesse Mulligan’s Book Critic slot on Radio New Zealand.

In 2020 she was the CNZ / International Institute of Modern Letters Writer in Residence.

Born and bred in Wellington, Catherine moved to Hawke’s Bay in 2021 and is current Chair of Hawke’s Bay Readers & Writers and on the board of Verb Wellington.

Catherine’s latest novel is contemporary rom-com Kiss My Glass (Harper Collins)!

May is New Zealand Music Month and Wellington City Libraries are hosting a range of events.

Maths & Music Learning Centre students will present a variety concert at Te Takapū o Patukawenga Mervyn Kemp (Tawa) Library on Saturday 2 May, from 11am to 11.30am.

This boutique family-run Tawa academy believes in the transformative power of music in education. People can come and see that for themselves

Every Saturday morning in May Tawa Library is hosting free community performances.

Poetry in Motion will be held at Waitohi Johnsonville Library on Thursday 7 May from 3:30pm to 4pm.

People attending can enjoy a short concert of classic poetry reworked into original music on piano and guitar with librarian Sue Jane.

Sue will also explore the poems and the poets who created them and provide insights into the thinking behind her compositions.

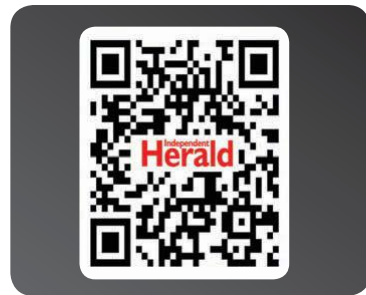
Nau mai rā tātou katoa. Everyone is welcome.



Cathy Kelly. Photo: Supplied.



Catherine Robertson. Photo: Supplied.



LOCAL TRADES TRUST A LOCAL

Try the Independent Herald - we get results!

Phone **BRENDA** today on **021 640 152** or email brenda@wsn.co.nz

Call in the Experts

BUILDERS

- Professional • reliable
- high-quality work
- licensed building practitioners

Our services include home renovations, alterations, kitchens, bathrooms, maintenance and repairs. No job is too small.

Ph: 04 390 1351
www.citybuilders.co.nz

ADVERTISING

Book yours with **BRENDA** today on **021 640 152** or email at brenda@wsn.co.nz

CARPET & VINYL

David & Maria’s **CARPET & VINYL SALE NOW ON**

For A No Obligation **FREE MEASURE & QUOTE**

7 Strathmore Ave, Strathmore Park, Wellington
Ph: (04) 388 7969
E: dmc Carpets@gmail.com

PLUMBING

CRAFTSMAN PLUMBER
Certified Plumber and Drainlayer
Graham Plumbing & Drainage Ltd

Plumbing. Draining. Roofing and Spouting. Blocked drains. Burst pipes. Repairs and Leaks. Black Dux Qest pipe replacement. Maintenance. Kitchens. Bathrooms. Replacing hot water cylinders.

Phone 027 4574 999 or 970 2409
Email: jokagraham3@gmail.com

PAINTER

Graham’s Painters
Exterior / Interior
Experienced tradesmen and large team
Autumn is here!!!
Now is the time to get your House Exterior painted
Available for Interior work too.
~ Pensioner Discounts ~
Email: grahampaintersnz@gmail.com
www.grahampainters.nz
Ph (04) 564 9202 or 021 183 9492

BLOCKED DRAINS

Double Dz Drainage
027 844 6899

“Great communication for work completed with replacing our guttering, & drainage for a new soak pit. Very satisfied with the work completed thanks.”
-Robert

- Drain Re-Laying
- Drain Maintenance & Repairs
- Blocked Drains
- CCTV Inspection
- Soak Pits
- New Builds

Call Now 027 844 6899 | www.doubledzdrainage.com

Road Safety Week coming

With Road Safety Week taking place from 4 to 10 May, road safety charity Brake is encouraging families and communities to join hundreds of community groups, schools and organisations running activities to help raise awareness of road safety.

Road Safety Week is coordinated by Brake and sponsored by NZ Transport Agency Waka Kotahi (NZTA) and Beca.

The theme of the week is "Be a road safety hero."

It recognises all those who are working to make our roads safer for everyone – from designing safer roads to caring for people after a crash – and highlighting the part everyone can play in making roads safer.

Brake is encouraging families and community leaders to go to www.roadsafetyweek.org.nz/communities for more information about the week and to register for a free online action pack of resources.

This includes downloadable resources and activity ideas, and interactive resources.

Road Safety Week, which is now in its 15th year, is a great opportunity for community groups, families, schools and organisations to take action on local road safety issues and raise awareness to prevent needless casualties.

"Everyone should be able to get around in safe and healthy ways, every day," Caroline Perry, Brake's NZ Director says.

"There are lots of people who work to make our roads safer, to save lives when crashes happen, and to support those affected by crashes, so this Road Safety Week we want to recognise all these Road Safety Heroes and highlight how everyone can be a hero too.

"Parents and community groups can help get these vital messages out to families, young

people and local drivers, making a difference to their local community.

"It's not too late to get involved. "Just visit the Road Safety Week website and sign up to get a free action pack."

NZTA sponsors Road Safety Week 2026, as making New Zealand roads safer for everyone is a top priority for the organisation, NZTA Strategy Director - Safety, Fabian Marsh says.

"Road Safety Week is a great way to help highlight people and organisations already involved in improving road safety, and to help raise awareness of road safety in local communities."

"Reducing harm on Aotearoa's roads is a vital part of our work at Beca," Andrea Rickard, Beca's New Zealand Managing Director says.

"We're proud to again stand alongside Brake, NZ Transport Agency, our partners and all the road safety heroes in communities across the motu who work every day to make our roads safer.

"I know our Beca teams around New Zealand are excited to get out and promote road safety messages in the communities we live and work in, including teaching students in our local schools about how to stay safe on and around roads."

There are ways communities can highlight their own Road Safety Heroes locally during Road Safety Week, and ideas are included in the action pack.



Heroes will also be celebrated nationally throughout the week.

Brake is a member of the Yellow Ribbon Road Safety Alliance, a group of organisations working to raise awareness of road safety.

The Alliance will be presenting the annual Road Safety Hero Awards during Road Safety Week, and Brake will also be highlighting the important work of a range of people working to make our roads safer.

Another way the Alliance raises awareness of road safety is through use of the colour yellow, including wearing yellow ribbon pins and lighting up bridges, buildings and icons yellow during Road Safety Week.

As a charity, Brake is reliant on fundraising to help it continue providing free support resources to people affected by road crashes.

Many organisations choose to support Brake with a fundraiser such as a Go Yellow Day during Road Safety Week. Fundraising ideas can be found at www.roadsafetyweek.org.nz/fundraise.

WHAT'S ON...

The Community Noticeboard is for non-profit organisations. For \$15.00 you can publish up to 25 words.

No AGMS, sporting notices or special meetings. Community Notices must be pre-paid.

phone (04) 587 1660 or email classifieds@wsn.co.nz

Public Notice



Out of Zone Enrolment

Rewa Rewa School is currently inviting applications for out of zone enrolments in New Entrants, Year 1 & Year 3, starting in Term 3 2026 (Saturday 04 July – Fri 25 September 2026). The deadline for receipt of applications is 9am, Friday 05 June 2026. Submit an online enrolment application at www.rewarewa.school.nz.

Enrolment at our school is governed by an enrolment scheme, details of which are available on our website. The board has determined that up to 12 places will be available for out-of-zone students in 2026. The exact number of places will depend on the number of in zone student enrolments. If the number of out of zone applications exceeds the number of places available, students will be selected by ballot. If a ballot for out of zone places is required, it will be held on Monday 08 June 2026.

Parents will be informed of the outcome of the ballot within three school days of the ballot being held.

Parents of students who live in zone should notify the school when their child turns 4, to assist the school to plan appropriately.

Funeral Directors

We make a difficult time a little easier

Share your funeral wishes with Eva at The Wilson Funeral Home



Eva Rippon: eva@twfh.co.nz | twfh.co.nz

Karori
142 Karori Road
(by appointment only)
04 476 5292

Newtown
375 Adelaide Road
04 389 6069

THE Wilson FUNERAL HOME

Funeral Directors

Guardian Funeral Home



Professional, personal funeral care in Wellington North

Johnsonville
4 Moorefield Road
04 477 4025

Tawa
157 Main Road
04 232 1588

Open by appointment only



gfh.co.nz

We make a difficult time a little easier

Trades & Services

Graham's Painters

Get your House Exterior and Interior painted!

Experienced tradesmen and large team

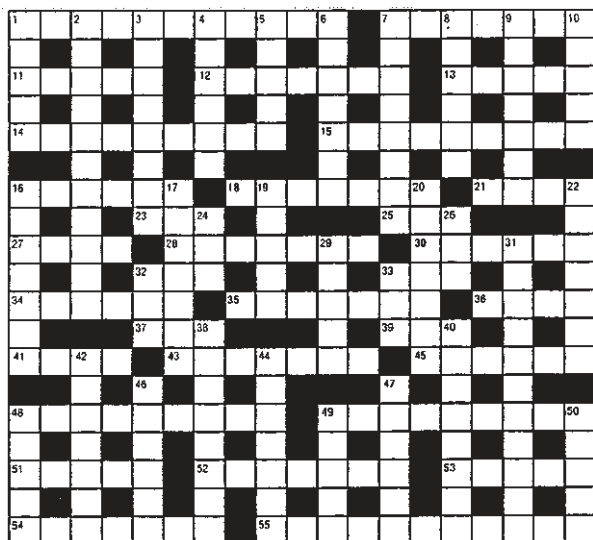
~ Pensioner Discounts ~

E: grahampaintersnz@gmail.com
W: www.grahampainters.nz
Ph: (04) 564 9202
021 183 9492

Buy LOCAL Support LOCAL

Invest in your community!

CROSSWORD Puzzle



ACROSS

- Minister without portfolio (4-7)
- Of the stomach. (7)
- Vision. (5)
- Dregs(pl) (7)
- Volume of maps. (5)
- Oil. (9)
- Explain. (9)
- Priest's assistant. (6)
- Hairy. (7)
- The Loch ... monster. (4)
- Existence(Phil) (3)
- Purpose. (3)
- Fertile soil. (4)
- Temper fit. (7)
- Cask maker. (6)
- Limb. (3)
- Movie, "silence of ... lambs" (3)
- Corset. (6)
- Windpipe. (7)
- Jump. (4)
- Ex N.Z. first minister ... Henare. (3)
- Literary gossip. (3)
- Small whirlpool. (4)
- Too eager to fire gun, ... happy. (7)
- Group of performers. (6)
- Entrusted friend. (9)

- Sufferer of sleeplessness. (9)
- Anoint with oil. (5)
- Repeat. (7)
- Banal. (5)
- Skill. (7)
- Impressive. (11)

DOWN

- Flat seafish. (5)
- Bedroom servant. (11)
- Short summary. (8)
- Normandy Native. (6)
- Swiftness. (5)
- Set right. (7)
- Divide into degrees. (8)
- Motionless. (6)
- Free. (7)
- Social rank. (5)
- Size of gun bore. (7)
- Beg. (7)
- Bury. (5)
- Bewitch. (7)
- Division of ode. (7)
- Kiwi actor, ... Neill. (3)
- Hare(fem) (3)
- Male relative. (5)
- Injurious. (11)
- Deed. (3)
- Early evening meal,

- high ... (3)
- Town-dweller. (8)
- Fragrant. (8)
- Underground cell. (7)
- Reaps. (7)
- Upper-arm muscle. (6)
- Concur. (6)
- Corn husks. (5)
- Angry. (5)
- Comfort. (5)

Solution

Last Week: 23 April 2026



Wharfies men finally win

By Hamish Wareham

Friday night saw round five of the women's central league begin under lights at Newtown Park as fierce rivals from the past few seasons Wellington United and yet to be beaten Waterside Karori did battle.

Wellington United opened the scoring only four minutes into the contest through Jemma Roberston, a 24th minute own goal from Kennedy Corkin ensured the game went into halftime locked at 1-1.

Karori went in front with a goal in the 64th minute when Natalie Orellana headed in the corner, but that was cancelled out little over ten minutes later when Hannah Pillely equalised for the home side.

Just as it looked like points were going to be shared, one final attack from Wellington United saw Carolyn O'Reilly score the winner, slotting a finish past Karori goalkeeper Emma Andrew to take all three points from a thrilling encounter.

Elsewhere from round five, Seatoun needed just the one goal from Jasmine Foster in the 77th minute to take all three points from Victoria University at Boyd Wilson.

Four first half goals and three in the second half saw Petone thrash Taradale 7-1.

The points were shared at Fraser Park as Phoenix Academy Under 18s and Miramar

Rangers drew 2-2.

The first game in the men's Central League saw the two bottom placed teams on the table face off as Waterside Karori had their second home game of the season taking on Taranaki based side FC Western.

A brilliant solo goal from Oscar Crowe proved enough for the three points for Waterside Karori, their first of the 2026 campaign, jumping up one spot to eighth on the table ahead of a huge clash at home against league leaders Miramar Rangers this coming Saturday.

North Wellington, still chasing their first away win of the season, headed up to Napier to do battle with Taradale and started well taking a 1-0 slender halftime lead through Jared Cunniff.

A second half brace from Adam Green kept North Wellington with zero wins from three on the road in the first five rounds of Central League Two in 2026.

ANZAC weekend wasn't quite done for North Wellington, however, being drawn in a Chatham Cup preliminary fixture at Newtown Park against Wellington United.

Five first half goals from Finn Moore, Benji Holden, a Jerram Tuck double and an own goal booked North Wellington a spot in the first round which is expected to be drawn later in the week.



Waterside Karori players celebrating their half time lead. Photo: Supplied.

Hawks lose on ANZAC Day

By Frank Neill

ANZAC Day was not such a good day on the field for the Johnsonville Hawks Rugby team.

They travelled to Fraser Park for their Swindale Shield match against Petone, only to suffer a 32-17 loss.

The Hawks outstanding fullback Jacob Walmsley scored one of the two tries the Hawks achieved.

The other try was scored by prop Jarred Kuresa.

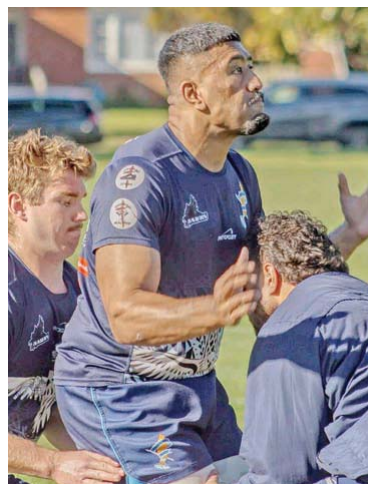
First five eight Niall Delahunt converted both tries and kicked a penalty.

The loss sees Johnsonville sitting near the bottom of the table on 6 points, with only two teams placed lower.

Pōneke is on 5 points and Avalon is one 1 point, but has a catch-up match to play.

Johnsonville will be back on their home ground of Helston Park on 2 May and will play Oriental-Rongotai. The kick off is at 2:45pm.

Oriental-Rongotai is just one place ahead of the Hawks on the Swindale Shield table, so



Action from the match between the Johnsonville Hawks and Petone. Photo: Supplied.

Johnsonville will be looking for a change of fortune next Saturday.

Find out how you can create your own jewellery

Design and carve your own piece to take home with the help of our master carvers! Plus learn about the significance of carving in Maori culture.

T: 03 755 6504
E: stevengwaliasi@gmail.com
W: www.bonznstonz.co.nz

Stay informed and entertained with us every week!

Independent Herald
SALES
 Brenda on 021 640 152 or email brenda@wsn.co.nz
 Steve on 027 765 8303 or email steve@wsn.co.nz
www.independentherald.co.nz