



# SMART ORDERING

## OPEN YOUR WEBSITE ACCOUNT TODAY!

You can now book your goods online with **Massey Harpers Country Supplies** to your existing Harpers account-making it even easier to manage your business.

What are the benefits of booking to your Harpers account?



Discounts available online as well as in store



Order from the comfort of your own home, at a time that suits you



View your full online order history making repeat ordering easier for you



Hassle free payments

# Complete coccidiosis cover with Chanelle

No matter your farming system, trust Dycoxon® to protect your stock from coccidiosis this season. Dycoxon prevents the clinical symptoms and performance reduction associated with coccidiosis and can be used in lambs and calves.

## What is coccidiosis?

Coccidiosis is a disease caused by tiny single celled organisms called protozoa, which are numerous in the animals environment. Animals can ingest the organisms, which make their way to the digestive system and begin to breakdown the gut lining. This can prevent nutrient and water absorption, significant production losses and even death.

## When to use Dycoxon

Administer Dycoxon (diclazuril) 10-14 days after the animal has entered a risk environment (e.g. turnout/ rearing shed). If there is a history of coccidiosis on the farm, administer product one week in advance of expected symptoms.

Colostrum-derived immunity diminishes in lambs from four weeks of age on, while calves are at risk sooner. If environmental coccidia oocyst burden is high, a second treatment may be required approximately 21 days after first.

## What will I see?

Clinical coccidiosis is seen in calves up to six months of age and in lambs to eight weeks of age. Symptoms include:

- Bloody/black diarrhoea
- Fever
- Straining
- Lack of appetite
- Fluid loss
- Lethargic animals
- Anaemia
- Death

## Further ways to reduce contamination:

- Ensure you are using disinfectants in your calving and lambing pens that are known to work against coccidia
- Don't skimp on bedding. Use clean bedding as often as you can, and plenty of it
- Raise water troughs off the ground to reduce contact with faeces
- Clip cows tails in advance of calving
- Move meal troughs around pastures regularly for feeding

Dycoxon contains Diclazuril, and comes in 1L, 2.5L and 5L pack sizes.

Zero meat withdrawal on Dycoxon.

Visit [www.farmhealthfirst.com/product/dycoxon](http://www.farmhealthfirst.com/product/dycoxon) for more information.



Order online at [farmersdirect.co.uk](http://farmersdirect.co.uk)

# HARPERS BUCKET RANGE

## CATTLE

---

### CATTLE BUCKET

Formulated for all types of cattle to help balance a wide range of forage-based diets for optimal health and productivity.

### CATTLE MAG BUCKET

Palatable high magnesium lick bucket containing copper, ideal for dairy and suckler cows at risk of grass staggers during the spring and autumn.

### PRE-CALVER BUCKET

Ideal for in-calf cows and heifers during the last 6 weeks of pregnancy. Contains a high level of magnesium to help reduce the risk of milk fever and to support calving ease.

### CALF BUCKET

Harpers Calf bucket has been carefully balanced to ensure calf requirements, with added Optimin SeY to aid immune function and Pulmosure to support breathing and clearing of the airways.

## CATTLE & SHEEP

---

### ENERGY BUCKET

Formulated for cattle and sheep, where extra protein and energy are required to support optimal health and performance. It contains fish oil as a source of omega 3, an energy source to support reproductive performance and immune function. Especially suitable for breeding cattle at bulling time, growing and finishing cattle, and for complementing forages from late summer onwards and throughout the winter. Not suitable for cattle under 12 weeks of age.

## SHEEP

---

### SHEEP BUCKET

Formulated for sheep to support good flock health and performance throughout the year.

### SHEEP MAG BUCKET

Palatable high magnesium lick bucket ideal for lactating ewes at risk of grass staggers during the spring.

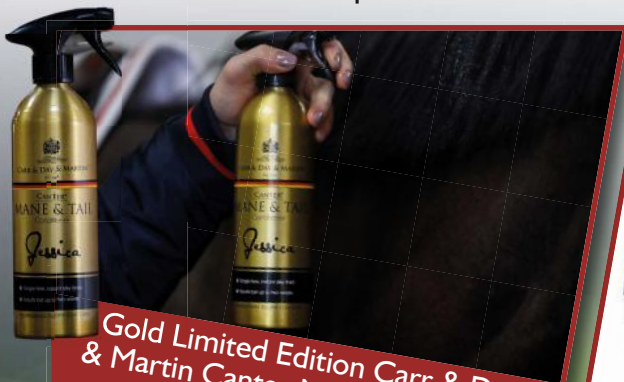
### PRE-LAMBER BUCKET

Extra high energy lick with added fish oil, ideal for ewes during tupping time to support scanning percentages and in the run up to lambing where there is a risk of twin lamb disease. Also suitable for flock replacements and growing and finishing lambs.



Order online at [farmersdirect.co.uk](http://farmersdirect.co.uk)

Offers are valid from 1st September until 31st October 2022. Offers are valid while stocks last.



Gold Limited Edition Carr & Day & Martin Mane & Tail Spray  
£10.25 inc vat



Felix Pouches  
ONLY £14.17 ex VAT



Buckbootz Safety Wellies £93 (no VAT) & Non Safety Wellies £74 + VAT



Skinner's Adult Dog Food Cartons  
18x390g ONLY £22.50

# OFFERS



NEW IN Harpers Clothing Range



Household Range  
available Instore and Online




# WE ARE COLOSTRUM



## CALF'S CHOICE TOTAL® 100

Only whole bovine colostrum replacers provide newborns with the colostrum proteins, colostrum fat and other critical ingredients required within hours of birth.

- ◆ **Whole Bovine Colostrum**
  - not a manufactured formula based on whey or eggs
- ◆ **High in Colostral Fat**
  - important energy source required by calves immediately after birth
- ◆ **Safe and Effective**
  - free of disease-causing organisms, tested for safety and efficacy
  - EBL free, TB free
- ◆ **Convenient**
  - easily mixes in under 15 seconds and has a 3-year shelf life
- ◆ **GMP+ FSA Assured** 

## Interested in more info?

Contact Tracey 02920 617770 | [tracey.gretton@altagenetics.com](mailto:tracey.gretton@altagenetics.com)  
or contact your local team today! | [uk.altagenetics.com](http://uk.altagenetics.com)

## Drench your animals to keep performance

Many farmers are experiencing issues brought on by the current drought across Britain. Various factors can affect the quality of your grass including soil type, growth stage, fertilisation, how grazed it has been and of course, weather.

The dry period affecting many parts of the UK right now has left many grazing platforms looking like standing crops of hay which brings the potential problem of vitamin and mineral deficiencies. Hay has a much lower vitamin E content compared to grass, so farmers who substitute grass with hay could see vitamin E deficiencies start to creep in. Due to the relationship between selenium and vitamin E, this potential vitamin E deficiency is also likely to cause an increased selenium requirement in grazing animals. Selenium deficiency can lead to white muscle disease, infertility, ill-thrift, abortion and low growth rates.

After a period of drought, sudden rain can also bring its own issues. When grass growth returns, animals whose growth may have been held back by the lack of forage/grazing will potentially start to grow rapidly on the lush protein-rich grass. This is likely to be particularly prominent in growing and finishing lambs. Rapidly growing lambs have the highest cobalt requirement and could therefore be affected significantly by shortages. Cobalt deficiencies could lead to the condition 'Pine', lack of appetite, diarrhoea, poor growth, rough/discooured coat, anaemia, staggers and bone deformities.



If a sheep farmer has previously suffered cobalt deficiencies, it is especially likely they will see them again this year. However, deficiencies could also occur on farms where it has never previously been an issue. Following a similar hot weather period in 2018, there were many reports of lambing percentages being down. Ewes require a mix of minerals for optimum fertility, pregnancy and birth and many of these minerals (not vitamins) come from their dry matter intake – grass. If the grass isn't growing, and therefore not available for them to eat, their dry matter consumption will consequently be reduced. This subsequently reduces their mineral intake. Minerals are absolutely key for performance, health and fertility. In situations like we are currently experiencing, mineral supply needs to be considered, whether finishing lambs or pre-tupping the for the ewes (and tups!), and a drench is a good option for ensuring your animals have a balanced and adequate intake, sufficient for their growing needs.

***For more information, speak to our RAMA trained staff.***

Order online at [farmersdirect.co.uk](http://farmersdirect.co.uk)

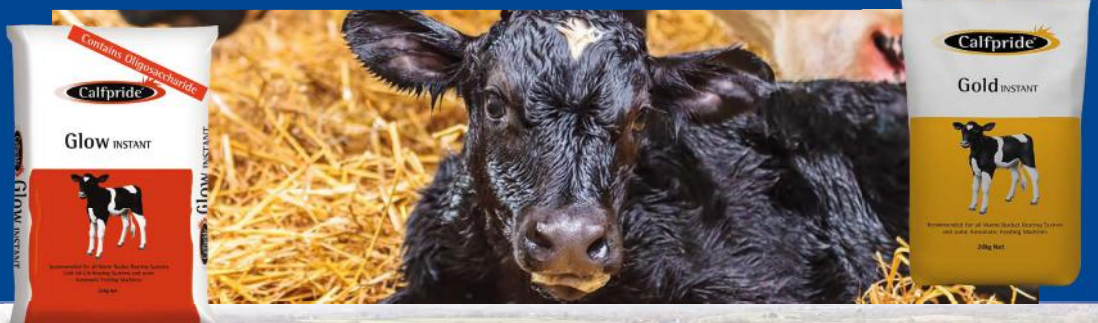
# Harpers Autumn Calving Advice

As the temperature drops, the nights draw in and autumn calving gets into full swing, remember to increase the amount of milk you are feeding to your newborn calves.

During periods of cold weather, pre-weaned calves require more energy to keep warm – so less energy is available for growth and their immune system.

Young calves (less than three weeks of age) are very susceptible to the cold. In fact, temperatures only need drop to 10-15°C for a young calf to require more feed to maintain their body temperature, grow and remain healthy. By four weeks of age calves are more robust and will not feel the cold until temperatures drop below 6-10°C.

For a calf less than three weeks old, you need to step up the level of milk solids by 100g per day for every 10°C drop in temperature below 20°C. For example, if the outside temperature is 10°C, feed an extra 100g of milk powder per day.



Farmers in the South West are gaining **2.7 - 3.6 additional units of Nitrogen** from 1000 gallons of slurry by using **SlurriN PRO** leaving them with a **net benefit of £1000 - £1650 per year.\***

## EASE OF HANDLING



- ✓ Improved handleability
- ✓ Reduction in crusting
- ✓ Time and money saving

## ENVIRONMENT



- ✓ Helps reduce NH<sub>3</sub> emissions by up to 50%
- ✓ Rapid incorporation into soil



The natural way to maximise the value of slurry

*\*Using pricing for AN £758/t as per AHDB GB fertiliser prices 14/07/2022 & 666,000 gallons of treated slurry.*

Offers are valid from 1st September until 31st October 2022. Offers are valid while stocks last.



FourCows Footbath solution, Paste and Bandage for £92 +VAT



NEW IN - Harpers 22.5kg Mineral Buckets from £ 17.70



Paxton 450 Gallon Trough £400 +VAT While Stocks last



25% OFF the Horizont Range. While Stocks Last

# OFFERS



Your Calving Essentials range available Instore and Online



JFC SECONDS Calf Hutch £460 +VAT

### Store Open Times

Monday-Friday 8.00am-5.30pm Saturday 8.30am-4.00pm

### Contact Details

**Dan Miles** (Business Development)

dan.miles@harpersfarmssupplies.co.uk 07976 627 014

**Guy Barriball** (Farm and Yard Sales)

guy.barriball@harpersfarmssupplies.co.uk 07384 811 401

**Elliot Pomeroy** (Farm Sales Specialist)

elliott.pomeroy@harpersfarmssupplies.co.uk

**Emma Collings** (Farm Sales Specialist)

emma.collings@harpersfarmssupplies.co.uk

### Harpers Farm Supplies

01409 259 600 farmersdirect.co.uk enquiries@harpersfarmssupplies.co.uk  
Harrier Park, Shadrick Way, Holsworthy Industrial Estate, Devon, EX22 6FU

Follow us on social:

