



# KDG

## TOOLS AND EQUIPMENT CORPORATION



### YOUR ONE STOP INDUSTRIAL SHOP



**WELDING TOOLS**



**MACHINE**



**MOTOR ENGINE**



**POWER TOOLS**



**SAFETY ITEMS**



**BOLTS - SCREWS**



**HAND TOOLS**



**ELECTRICAL ITEMS**



**GASKET**



**LIFTING TOOLS**



**MEASURING TOOLS**



**LUBRICANTS**

### CONTACT US

LANDLINE: 046 409 6236  
GLOBE: 0966-227-5158  
kdgtools@gmail.com  
VIBER: 0966-227-5157

### SHOP NOW

14427 GOVERNORS  
DRIVE, CARMONA,  
CAVITE Beside Welborne  
Industrial (Green Parking  
Lot)

### LEARN MORE

SOCIALS:  
LAZADA  
TIKTOK  
FACEBOOK  
INSTAGRAM

# TABLE OF CONTENTS

## COMPANY PROFILE



- FRONT PAGE
- TABLE OF CONTENTS
- CORE VALUES, MISSION, AND VISION
- FOREWORD
- COMPANY INFORMATION
- PRODUCTS AND SERVICES
- COMPANY HISTORY
- LETTER OF ACCREDITATION



### CONTACT US

LANDLINE: 046 409 6236  
 GLOBE: 0966-227-5158  
[kdgtools@gmail.com](mailto:kdgtools@gmail.com)  
 VIBER: 0966-227-5157

### SHOP NOW

14427 GOVERNORS  
 DRIVE, CARMONA,  
 CAVITE Beside Welborne  
 Industrial (Green Parking  
 Lot)

### LEARN MORE

SOCIALS:  
 LAZADA  
 TIKTOK  
 FACEBOOK  
 INSTAGRAM



KDG | SINCE 2020

## CORE VALUES

- WE BELIEVE IN TREATING OUR CUSTOMERS WITH RESPECT AND FAITH.
- WE GROW THROUGH CREATIVITY, INVENTION AND INNOVATION.
- WE INTEGRATE HONESTY, INTEGRITY AND BUSINESS ETHICS INTO ALL ASPECTS OF OUR BUSINESS FUNCTION.

## MISSION

- To build long term relationships with our customers and clients and provide exceptional customer services by pursuing business through innovation and advanced technology.

## VISION

- To provide quality products and services that exceeds the expectation of our esteemed customers.

KDG TOOLS AND EQUIPMENT

# YOUR PARTNER IN DEVELOPING FUTURE

ONE STOP INDUSTRIAL SHOP

## Connect with us!

Let's grow your business together



LANDLINE: 046 409 6236  
GLOBE: 0966-227-5158  
VIBER: 0966-227-5157



[kdgtools@gmail.com](mailto:kdgtools@gmail.com)



14427 GOVERNORS DRIVE, BANCAL  
CARMONA, CAVITE BESIDE WELBORNE  
INDUSTRIAL ( GREEN PARKING LOT)



# FOREWORD

To a great extent, as a growing company, we, at KDG Tools and Equipment Corporation, are glad to say that we belong to the group of competitive suppliers in the industry.

We take great pleasure in introducing the company's organization, composed mostly of men who happen to have a common goal that is to take part in the welding equipment and supplies business. Being part of this kind of organization gives us inspiration and a challenge to give all our best to make the company acceptable to "YOU".

We are also taking this opportunity to introduce KDG Tools and Equipment Corporation as a company established to supply construction equipment, which includes welding machines, power tools, safety items, and hydraulic equipment and tools.

To all of our business partners, we "GUARANTEED" that quality services will be our criterion for success rather than a spoken word. Well-done is preferable to well-spoken.



LANDLINE: 046 409 6236  
GLOBE: 0966-227-5158  
VIBER: 0966-227-5157



[kdgtools@gmail.com](mailto:kdgtools@gmail.com)



14427 GOVERNORS DRIVE, BANCAL  
CARMONA, CAVITE BESIDE WELBORNE  
INDUSTRIAL ( GREEN PARKING LOT)



# **PRODUCTS AND SERVICES**

**KDG YOUR ONE STOP  
INDUSTRIAL SHOP**

## **OUR PRODUCTS**

**WELDING MACHINES**

**WELDING MATERIALS AND**

**ACCESSORIES**

**POWER TOOLS**

**SAFETY ITEMS**

**ELECTRICAL USE ITEMS**

**AIR COMPRESSOR**

**HYDRAULIC VALVE**

**ALL KINDS OF OIL SEAL**

**OIL HOSE AND DIESEL HOSE**

**AIR LINE FITTINGS**

**AIR ONE TOUCH HOSE**



# COMPANY INFORMATION

## COMPANY NAME

**KDG TOOLS AND EQUIPMENT  
CORPORATION**

## OFFICE ADDRESS

**14427 Governor's Drive, Bancal  
CARMONA, CAVITE**

## CONTACT NUMBERS

**LANDLINE: 046 409 6236**

**GLOBE: 0966-227-5158**

**VIBER: 0966-227-5157**

## EMAIL ADDRESS

**kdgtools@gmail.com**

## SOCIAL MEDIA

- FACEBOOK
- TIKTOK
- LAZADA
- INSTAGRAM

## BUSINESS PERMIT

**0403**

## TIN NUMBER

**601 - 223 - 535 - 00000**

## BUSINESS LINE

**CONSTRUCTION MATERIALS  
SUPPLIER / RETAILER**

## DATE ESTABLISHED

**OCTOBER 1, 2021**

**KDG TOOLS AND EQUIPMENT  
CORPORATION**





# **COMPANY HISTORY**

## **KDG Tools and Equipment CORPORATION**

---

**OCTOBER 2021**

**ADDRESS: 14427 Governors  
Drive Bancal, Carmona Cavite,  
4116**

## **BUSINESS LINE**

---

**CONSTRUCTION MATERIALS  
SUPPLIER / RETAILER**



# LETTER OF ACCREDITATION

Dear Sir/ Madame;

KDG Tools and Equipment Corporation, has been engaged in Welding Machines, Power Tools, Safety Items, and Hydraulic Equipment and Supplies and until now we are innovating and developing our product to a higher quality to satisfy your needs.

Furthermore, we wish to express our intention to apply for accreditation and to bid as one of your supplier in any present or future projects you may have.

We are proud to inform you that we have served Major Power Plant, Industrial and Commercial companies such as:

Daelim Inc., Bataan 2020 Inc., Daeah Phils., Midong, Power trunking System Inc., Bumjin FCC, DH Phils., Hanjin Subic Shipyard, HCIP, Myungsung, Sungjin Eng, Dansung, K-Steel Philippines Inc., GTC Global Inc., SB Construction Corp., Sta. Clara International Corp., Global Woojin I&S Corp., Philspec Construction Inc, RPDEV Enterprise, Big House Enterprise, W&J Const. and Gen. Services, SJ E&I Inc., Ayos to Kabalikat Construction Corp., Ventanas Philippines Construction Inc., and many more.

Please take a few minutes to read our profile and see how KDG Hardware Tools and Equipment Trading can help you on your business needs.

Thank you and we hope that we could meet your standard and be considered as one of your Supplier.

For and in behalf of  
KDG TOOLS AND EQUIPMENT CORPORATION

Sincerely,

Haeun Kim  
General Manager



# CERTIFICATE OF REGISTRATION (2303)

BIR FORM

**2303**

REVISED: APRIL 2019

REPUBLICA NG PILIPINAS  
KAGAWARAN NG PANANALAPI  
KAWANIHAN NG RENTAS INTERNAS  
REVENUE REGION NO. 09A - CAVITE (CAVITE-BATANGAS-MINDORO-ROMBLON)  
REVENUE DISTRICT OFFICE NO. 54A - TRECE MARTINEZ CITY, EAST CAVITE

OCN: 54ARC20210000000637

Date OCN Generated: September 1, 2021

## CERTIFICATE OF REGISTRATION

|  |  |  |
|--|--|--|
| TIN & BRANCH CODE<br>601-223-535-00000                                       | NAME OF TAXPAYER<br>KDG TOOLS AND EQUIPMENT<br>CORPORATION | TIN ISSUANCE DATE<br>September 1, 2021 |
| REGISTERING OFFICE   | X Head Office  | Branch                                 |
| REGISTERED ADDRESS<br>GOVERNORS DRIVE BANCAL 4118 CARMONA CAVITE PHILIPPINES |  |  |

| TAX TYPES                         | FORM TYPES | FILING START DATE | FILING FREQUENCY | FILING DUE DATE  |
|-----------------------------------|------------|-------------------|------------------|--|
| CORPORATE INCOME TAX              | 1702       | January 1, 2022   | ANNUALLY         | On or before the 15th day of the 4th month following the close of the taxpayer's taxable year.   |
| CORPORATE INCOME TAX              | 1702Q      | October 1, 2021   | QUARTERLY        | Within sixty (60) days following the close of each of the first three (3) quarters of the taxable year.  |
| VALUE ADDED TAX                   | 2550M      | September 1, 2021 | MONTHLY          | Not later than the 20th day following the close of the month.  |
| VALUE ADDED TAX                   | 2550Q      | October 1, 2021   | QUARTERLY        | Not later than the 25th day following the close of each taxable quarter.   |
| WITHHOLDING TAX - EXPANDED/OTHERS | 0919E      | September 1, 2021 | MONTHLY          | On or before the 10th day of the month following the month in which withholding was made.  |
| WITHHOLDING TAX - EXPANDED/OTHERS | 1601EQ     | October 1, 2021   | QUARTERLY        | Not later than the last day of the month following the close of the quarter during which withholding was made.   |
| WITHHOLDING TAX - EXPANDED/OTHERS | 1604E      | January 1, 2022   | ANNUALLY         | On or before March 1 of the year following the calendar year in which the income payments subject to expanded withholding taxes or exempt from withholding tax were paid or accrued.                                   |
| WITHHOLDING TAX - COMPENSATION    | 1601C      | September 1, 2021 | MONTHLY          | On or before the 10th day of the month following the month when the withholding was made except for taxes withheld for December which shall be filed and paid/remitted on or before January 15 of the succeeding year. |
| WITHHOLDING TAX - COMPENSATION    | 1604C      | January 1, 2022   | ANNUALLY         | On or before January 31 of the year following the calendar year in which the compensation payment and other income payments were paid or accrued.  |

# TABLE OF CONTENTS AVAILABLE ITEMS



**SCAN AND SEE OUR  
LIST OF AVAILABLE  
PRODUCTS**



- MACHINES P.10-24
- POWER TOOLS P.25-32
- AIR TOOLS P.33-35
- ELECTRICAL ITEMS P.36-38
- HAND TOOLS P.39-51
- SAFETY ITEMS P.52-57
- FITTINGS P.58-62
- DISC AND GASKET P.63-65
- CORD, WIRE, CABLE & HOSE P.66-67
- MEASURING TOOLS P. 68-71
- LIFTING TOOLS P.72-73

FOR AVAILABLE SIZE AND  
CODE KINDLY MESSAGE US

## CONTACT US

LANDLINE: 046 409 6236  
GLOBE: 0966-227-5158  
kdgtools@gmail.com  
VIBER: 0966-227-5157

## SHOP NOW

14427 GOVERNORS  
DRIVE, CARMONA,  
CAVITE Beside Welborne  
Industrial (Green Parking  
Lot)

## LEARN MORE

SOCIALS:  
LAZADA  
TIKTOK  
FACEBOOK  
INSTAGRAM



YOUR ONE STOP  
INDUSTRIAL SHOP

# MACHINES



[kdgtools@gmail.com](mailto:kdgtools@gmail.com)

FOR MORE MACHINE  
AND PRODUCTS  
MESSAGE US OR  
VISIT OUR SHOP



**VISIT NOW**

## AVAILABLE MACHINE:

- WELDING MACHINE
- PIPE THREADING MACHINE
- BENCH DRILLING MACHINE
- HOLE CUTTING MACHINE
- PORTABLE MULTI PURPOSE CUTTING MACHINE
- PLASMA CUTTING MACHINE

LANDLINE: 046 409 6236  
GLOBE: 0966-227-5158  
VIBER: 0966-227-5157

14427 GOVERNORS DRIVE, BANCAL  
CARMONA, CAVITE BESIDE WELBORNE  
INDUSTRIAL ( GREEN PARKING LOT)



# MACHINES

## AVAILABLE MACHINES

**PLASMA CUTTING MACHINE, ARC WELDING MACHINE, WELDING MACHINE, Battery Operated Welding Machine, PIPE THREADING MACHINE, BENCH DRILLING MACHINE, WET CORE DRILL MACHINE, HOLE CUTTING MACHINE, PORTABLE MULTI PURPOSE MACHINE, MIG WELDING MACHINE, INVERTER TIG MACHINE, INVERTER AIR PLASMA MACHINE, CO2 WELDING MACHINE, CO2 MIG MACHINE,**



PLP-40

Inverter Plasma Cutting



MINI-185S

Inverter Welding Machine



190LI

Battery Operated Machine



SHARP-2000

Inverter Arc



SHARP-2200

Inverter Arc



SHARP-2700

Inverter Arc

LANDLINE: 046 409 6236  
GLOBE: 0966-227-5158  
VIBER: 0966-227-5157

**BUY NOW**

KDG TOOLS AND EQUIPMENT CORPORATION



14427 GOVERNORS DRIVE, BANCAL CARMONA, CAVITE BESIDE WELBORNE ONDUSTRIAL ( GREEN PARKING LOT)

# KOREANA INVERTER AIR PLASMA CUTTING MACHINE

## MODEL: PLP-40

| ITEM  | Specification |
|---|---------------|
| <b>PLP- 40</b>                                      |               |
| RATED INPUTED                                       | 6.5KVA        |
| RATED FREQUENCY                                     | 50~60Hz       |
| RATED INPUT VOL                                     | AC220V        |
| RATED USAGE   | 35%           |
| RATED LOAD VOLTAGE                                  | 96V           |
| HIGH TEST NOLOAD VOLTAGE                            | 280V          |
| OUTPUT CURRENT                                      | 40A           |
| WEIGHT  | 5.3KGS        |
| CAPACITY  | COPPER 71     |
|   | STS-8T        |
|   | STEEL 10T     |
| REQUIRED ELECTRIC CABLE 4SQ<br>REQUIRED BREAKER 30A |               |



# SHARP INVERTER ARC WELDING MACHINE

## MODEL: 2000

| ITEM              | Specification |
|-------------------|---------------|
| <b>SHARP 2000</b> |               |
| Input Voltage     | 1PH 220V      |
| Frequency         | 50/60         |
| No-Load Voltage   | 76V           |
| Current Range     | 15A~160A      |
| Rated Duty Cycle  | 60%           |
| Input Capacity    | 3             |
| Output Current    | 160A          |
| Output Voltage    | 23V           |
| Usable Electrode  | 6011- 3.2 mm  |
| (Full Weld)       | 6013- 3.2 mm  |
|                   | 7018- 2.5 mm  |
| Accessories       | YES           |



# SHARP INVERTER ARC WELDING MACHINE

## MODEL: 2200

| ITEM              | Specification |
|-------------------|---------------|
| <b>SHARP 2200</b> |               |
| Input Voltage     | 1PH 220V      |
| Frequency         | 50/60         |
| No-Load Voltage   | 76V           |
| Current Range     | 15A~200A      |
| Rated Duty Cycle  | 60%           |
| Input Capacity    | 6.6           |
| Output Current    | 200A          |
| Output Voltage    | 25V           |
| Usable Electrode  | 6011- 3.2 mm  |
| (Full Weld)       | 6013- 3.2 mm  |
|                   | 7018- 3.2 mm  |
| Accessories       | YES           |



# SHARP INVERTER ARC WELDING MACHINE

## MODEL: 2700

| ITEM              | Specification |
|-------------------|---------------|
| <b>SHARP 2700</b> |               |
| Input Voltage     | 1PH 220V      |
| Frequency         | 50/60         |
| No-Load Voltage   | 76V           |
| Current Range     | 15A~250A      |
| Rated Duty Cycle  | 70%           |
| Input Capacity    | 8             |
| Output Current    | 250A          |
| Output Voltage    | 28V           |
| Usable Electrode  | 6011- 4.0 mm  |
| (Full Weld)       | 6013- 4.0 mm  |
|                   | 7018- 4.0 mm  |
| Accessories       | YES           |



# DAEA BATTERY OPERATED- WELDING MACHINE

MODEL: 190LI

| ITEM  | Specification |
|---|---------------|
| <b>190LI</b>  |               |
| Input Voltage   | DC48V         |
| Input Capacity  | 5.5KVA        |
| Output Current  | 20~190A       |
| Dimension (WxDxH)   | 210x480x350   |
| No Load Voltage   | 50V           |
| Output Voltage  | 26V           |
| Duty Cycle  | 80A - 100%    |
|   | 120A- 60%     |
|   | 190A - 20%    |
| Rechargeable Battery Welding Machine *Charger<br>7.5A: 4 Hours Full Charge<br>*Battery Capacity: 48V/ 30A/ 1440wh<br>*Battery Level Display<br>*Able to use while charging<br>*Usable Welding Rod-3.2mm<br>*Made in Korea<br>Inclusion:<br>*Battery Charger<br>*Set of Electrode Holder and Earth Clamp<br>*Welding Mask<br>*Manual |               |



# OSEIN INVERTER WELDING MACHINE

MODEL: MINI-185s

| ITEM   | Specification  |
|--|----------------|
| <b>MINI-185S</b>   |                |
| Shock Voltage (v)  | 1PH/220V+15%   |
| Frequency (Hz)   | 50/60Hz        |
| Electrical Input (KVA)   | 6.5            |
| Utilization Rate (%)   | 8500%          |
| Output Voltage (A)   | 20~180         |
| Duty Cycle   | 60%            |
| No Load Voltage (V)  | 5065           |
| Power Protection Class(IP)   | IP21S          |
| Cutting Capacity (mm)  | 1.6~4.0        |
| Size (cm)  | 35.0x20.0x23.0 |
| Body Weight (kg)   | 3.3            |
| <b>MINI-185S</b><br>*Welding current can be accurately controlled by using PWM control technology and constant current output control.<br>*Easy arc start up, automatic protection of overcurrent and overheating.<br>*Excellent mark characteristics, stable arc, good welding performance & less splash<br>*Anti-stick, hot start, noise, arc-force & strong bore function<br>*Suitable for welding all types of materials such as carbon steel, alloy steel, cut, stainless steel, etc. |                |



# MACHINES

## AVAILABLE MACHINES

**PLASMA CUTTING MACHINE, ARC WELDING MACHINE, WELDING MACHINE, Battery Operated Welding Machine, PIPE THREADING MACHINE, BENCH DRILLING MACHINE, WET CORE DRILL MACHINE, HOLE CUTTING MACHINE, PORTABLE MULTI PURPOSE MACHINE, MIG WELDING MACHINE, INVERTER TIG MACHINE, INVERTER AIR PLASMA MACHINE, CO2 WELDING MACHINE, CO2 MIG MACHINE,**



MIG-185P

MIG-185P



PDM220

Inverter Arc



CT-312

Plasma Argon  
Arc Combined



CUT-40Pvo

Plasma Cutting



HG-200

Mig-Tig Arc Welding



LANDLINE: 046 409 6236  
GLOBE: 0966-227-5158  
VIBER: 0966-227-5157

**BUY NOW**

KDG TOOLS AND EQUIPMENT  
CORPORATION



14427 GOVERNORS DRIVE, BANCAL CARMONA, CAVITE BESIDE WELBORNE ONDUSTRIAL ( GREEN PARKING LOT)

# OSEIN INVERTER MIG MACHINE

## MODEL: MIG-185P



| ITEM                     | Specification          |
|--------------------------|------------------------|
| <b>MIG-185P</b>          |                        |
| <b>Input Voltage</b>     | <b>1PH220V±15%</b>     |
| <b>Frequency</b>         | <b>50/60 Hz</b>        |
| <b>Input Capacity</b>    | <b>4.5/5.5</b>         |
| <b>Efficiency</b>        | <b>85%</b>             |
| <b>Current Range</b>     | <b>40~160 / 20~140</b> |
| <b>Duty Cycle:</b>       | <b>80% - 60%</b>       |
| <b>No-Load Voltage</b>   | <b>50</b>              |
| <b>Insulation Class</b>  | <b>F</b>               |
| <b>Protection Degree</b> | <b>IP21S</b>           |
| <b>Welding Wire</b>      | <b>0.6~0.8</b>         |
| <b>Usable Electrode</b>  | <b>1.6~3.2</b>         |
| <b>Package Size</b>      | <b>55.0x26.0x38.0</b>  |
| <b>Weight</b>            | <b>8kg</b>             |

### Technical Characteristic:

- \*Advanced IGBT Inverter Technology, suit for MIG/MMA function.
- \*Fan cooled & thermal protection, both for MIG/MAG(gas) & flux (no gas) welding.
- \*Automatic over voltage, over-current over-heat protection, safety and durable.
- \*Power saving design, easy to be operated, smooth and stable welding performance, less spatter and noise.
- \*Suitable for welding carbon steel, low alloy steel, stainless steel, aluminum and aluminum alloy etc.
- \*With high duty cycle, performance and efficiency, stepless adjustment for current, voltage, wire feeder speed.
- \*With complete accessories: Mig torch, CO2 Regulator, electrode holder, earth clamp, welding cable, brush/hammer, protective mask.

# PRESENCE ARC WELDING MACHINE

## MODEL: PDM220

| ITEM                                  | Specification            |
|---------------------------------------|--------------------------|
| <b>PDM220</b>                         |                          |
| <b>Power Supply/Phases (V-Ph)</b>     | <b>AC230V±15%50/60HZ</b> |
| <b>Rated Input Power</b>              | <b>8</b>                 |
| <b>Output Current Range</b>           | <b>10-180A</b>           |
| <b>Duty Cycle @40c</b>                | <b>5.32</b>              |
| <b>Power Factor</b>                   | <b>0.7</b>               |
| <b>No Load Voltage</b>                | <b>63v</b>               |
| <b>Efficiency</b>                     | <b>85%</b>               |
| <b>Protection Class</b>               | <b>IP21</b>              |
| <b>Insulation Class</b>               | <b>F</b>                 |
| <b>Dimension Power Source</b>         | <b>320x130x265mm</b>     |
| <b>Weight Power Source</b>            | <b>4.8kgs</b>            |
| <b>Applicable Electrode Size(mm):</b> | <b>1.0-5.0</b>           |



# HYUNDAI WELDING MACHINE MIG-TIG-ARC WELDING

## MODEL: HG-200

| ITEM   | Specification                         |
|--|---------------------------------------|
| <b>HG-200</b>  |                                       |
| <b>Welding process</b>   | <b>MIG, MMA, TIG (lift arc)</b>       |
| <b>Supply voltage</b>  | <b>230V</b>                           |
| <b>Welding current range</b>   | <b>50 - 200 amp</b>                   |
| <b>Duty cycle</b>  | <b>100% / 60% / 30%</b>               |
| <b>Cooling</b>   | <b>Air cooled</b>                     |
| <b>Weight</b>  | <b>8.5 kg</b>                         |
| <b>Dimensions</b>  | <b>450 x 180 x 290 mm (5 kg coil)</b> |
| <b>INCLUSIONS:</b><br>*Supershield 11 Cored Wire<br>*3m Mig Torch<br>*Pole Holder for MMA<br>*connection Cable |                                       |



# OSEIN PLASMA ARGON ARC COMBINED PORTABLE WELDER PLASMA CUTTING MACHINE WELDER TIG WELDER

## MODEL: CT-312

| ITEM                    | Specification             |
|-------------------------|---------------------------|
| <b>CT-312</b>           |                           |
| Rated Input (V)         | Single Phase 220/1HP      |
| Rated Pressure KVA      | TIG(3.9)/TIG 4.8/cut 3.5  |
| Output Voltage          | TIG,TIG 10~120, CUT 10~30 |
| Rated Frequency Hz      | 50/60                     |
| Utilization Rate        | 60                        |
| Welding Service Ability | MMA 1.6-2.5,CUT8mm        |
| Weight                  | 8.5                       |

### Unique Advantages:

Simple operation, smooth cutting power and high cutting precision.

You can cut thick metal plates easily and quickly. Suitable for cutting stainless steel, copper, brass and aluminum.

boast high duty cycle performance and high efficiency.

Ultra light weight

Regulator configuration. A regulator is included to remove moisture generated from compressor.



# OSEIN PLASMA CUTTING MACHINE

## MODEL: CUT-40Pvo

| ITEM                   | Specification  |
|------------------------|----------------|
| <b>CUT-40Pvo</b>       |                |
| Rated Duty             | 60%            |
| Input Capacity         | 4.8            |
| Insulation Class       | F              |
| Efficiency             | 85             |
| Protection Degree      | IP21S          |
| Max. Cutting Thickness | 12             |
| Package Size           | 46.0x27.0x34.0 |
| Max. Cutting Thickness | 12             |
| Package Size           | 46.0x27.0x34.0 |
| Weight                 | 8kg            |

### Unique Advantages:

Simple operation, smooth cutting power and high cutting precision.

Stable output, small cutting tension and deformation. Thick metal plate can be cut easily.

Suit for cutting steel, copper, iron, aluminum, etc. HF touched starting cutting.

An automatic protection function to prevent overvoltage, overcurrent, and overheating, so it is safe to use.

Designed for light weight and portability, it can be used in a variety of environments, from home to the field.

Equipped with a handle, useful for storage and transportation.



# MACHINES

## AVAILABLE MACHINES

**PLASMA CUTTING MACHINE, ARC WELDING MACHINE, WELDING MACHINE, Battery Operated Welding Machine, PIPE THREADING MACHINE, BENCH DRILLING MACHINE, WET CORE DRILL MACHINE, HOLE CUTTING MACHINE, PORTABLE MULTI PURPOSE MACHINE, MIG WELDING MACHINE, INVERTER TIG MACHINE, INVERTER AIR PLASMA MACHINE, CO2 WELDING MACHINE, CO2 MIG MACHINE,**



CO2 Arc 500-LC



Tig Arc 500DT2



Plasma Cutter  
HT-701A



Tig Inverter 350A



Plasma Cutter 80A



LANDLINE: 046 409 6236  
GLOBE: 0966-227-5158  
VIBER: 0966-227-5157

**BUY NOW**

KDG TOOLS AND EQUIPMENT  
CORPORATION



14427 GOVERNORS DRIVE, BANCAL CARMONA, CAVITE BESIDE WELBORNE ONDUSTRIAL ( GREEN PARKING LOT)

# DAE-A WELDING MACHINE BEST-INVERTER DC TIG ARC

**MODEL: 500DT2**

| ITEM               | Specification      |
|--------------------|--------------------|
| <b>500DT2</b>      |                    |
| Input Voltage      | 220/ 380/ 440V     |
| Input Capacity     | 35KVA              |
| No Load Voltage    | 30~500A            |
| Output Current     | 30~500A            |
| Output Voltage     | 33V                |
| Duty Cycle         | 80% @ Rated Output |
| Dimension (WxDxH)  | 450x740x900mm      |
| Weight             | 64kg               |
| Crater Current     | 20A                |
| Gas Afterflow Time | 0.5~10 (sec)       |



# OSEIN PLASMA ARGON ARC COMBINED PORTABLE WELDER PLASMA CUTTING MACHINE WELDER TIG WELDER

## MODEL: 500LC

| ITEM              | Specification             |
|-------------------|---------------------------|
| <b>500LC</b>      |                           |
| Input Voltage     | 220/ 380/ 440V Switchable |
| Input Capacity    | 32KVA                     |
| No Load Voltage   | 68V                       |
| Output Current    | 60~500A                   |
| Output Voltage    | 12~42V                    |
| Duty Cycle        | 70% @ Rated Output        |
| Dimension (WxDxH) | 500x700x870               |
| Weight            | 70kg                      |
| Wire Size         | Ø0.9~Ø1.4                 |
| Wire Type         | Solid or Flux             |
| WEIGHT            | 5.3KGS                    |
| CAPACITY          | COPPER 71                 |
|                   | STS-8T                    |
|                   | STEEL 10T                 |



# DAEA INVERTER PLASMA CUTTER

## MODEL: HT-701A

| ITEM                   | Specification  |
|------------------------|----------------|
| <b>HT-701A</b>         |                |
| Rated Duty Cycle       | 60%            |
| Input Capacity         | 4.8            |
| Insulation Class       | F              |
| Efficiency             | 85             |
| Protection Degree      | IP21S          |
| Max. Cutting Thickness | 12             |
| Package Size           | 46.0x27.0x34.0 |
| Weight                 | 8kg            |

### Unique Advantages:

Simple operation, smooth cutting power and high cutting precision.

Stable output, small cutting tension and deformation.

Thick metal plate can be cut easily.

Suit for cutting steel, copper, iron, aluminum, etc. HF touched starting cutting.

An automatic protection function to prevent overvoltage, overcurrent, and overheating, so it is safe to use.

Designed for light weight and portability, it can be used in a variety of environments, from home to the field.

Equipped with a handle, useful for storage and transportation.



# DAEA DC PULSE TIG INVERTER WELDING MACHINE

**MODEL: 350A**

| ITEM               | Specification      |         |         |         |
|--------------------|--------------------|---------|---------|---------|
|                    | 350A               |         |         |         |
| Input Voltage      | 220V               |         | 380V    |         |
| Process            | TIG                | STICK   | TIG     | STICK   |
| Input Capacity     | 8.4KVA             | 6.9KVA  | 7.9KVA  | 5.9KVA  |
| No Load Voltage    | 72V                |         | 80V     |         |
| Output Current     | 10~300A            | 20~200A | 10~300A | 20~200A |
| Output Voltage     | 21V                | 22V     | 21V     | 22V     |
| Duty Cycle         | 60% @ Rated Output |         |         |         |
| Dimension (WxDxH)  | 250x480x380mm      |         |         |         |
| Weight             | 20kg.              |         |         |         |
| Crater Current     | 10~50A             |         |         |         |
| Pulse Current      | 10~120A            |         |         |         |
| Pulse Frequency    | 0.5~500Hz          |         |         |         |
| Gas afterflow time | 0.5~6 (sec)        |         |         |         |
| Down slope time    | 0.5~6 (sec)        |         |         |         |



# DAEA INVERTER PLASMA CUTTER

**MODEL: 80A**



# MACHINES

## AVAILABLE MACHINES

**PLASMA CUTTING MACHINE, ARC WELDING MACHINE, WELDING MACHINE, Battery Operated Welding Machine, PIPE THREADING MACHINE, BENCH DRILLING MACHINE, WET CORE DRILL MACHINE, HOLE CUTTING MACHINE, PORTABLE MULTI PURPOSE MACHINE, MIG WELDING MACHINE, INVERTER TIG MACHINE, INVERTER AIR PLASMA MACHINE, CO2 WELDING MACHINE, CO2 MIG MACHINE,**



YSB-180

BELT DISC SANDER



MC-2

PORTABLE CUTTING MACHINE



MC-3T

PORTABLE CUTTING MACHINE



CONCRETE VIBRATOR  
DUAL MOTOR

UDT | UDVM-1600



JMB-25

BAR BENDING MACHINE



JCB-32

REBAR CUTTING MACHINE

LANDLINE: 046 409 6236  
GLOBE: 0966-227-5158  
VIBER: 0966-227-5157

**BUY NOW**

KDG TOOLS AND EQUIPMENT  
CORPORATION



14427 GOVERNORS DRIVE, BANCAL CARMONA, CAVITE BESIDE WELBORNE ONDUSTRIAL ( GREEN PARKING LOT)

# MACHINES

## AVAILABLE MACHINES

**PLASMA CUTTING MACHINE, ARC WELDING MACHINE, WELDING MACHINE, Battery Operated Welding Machine, PIPE THREADING MACHINE, BENCH DRILLING MACHINE, WET CORE DRILL MACHINE, HOLE CUTTING MACHINE, PORTABLE MULTI PURPOSE MACHINE, MIG WELDING MACHINE, INVERTER TIG MACHINE, INVERTER AIR PLASMA MACHINE, CO2 WELDING MACHINE, CO2 MIG MACHINE,**



200MM/250MM

BAR GRINDER



2HP -10" / 12"

BAR GRINDER



APT-25

HAND BAR  
CUTTING MACHINE

LANDLINE: 046 409 6236  
GLOBE: 0966-227-5158  
VIBER: 0966-227-5157

**BUY NOW**

KDG TOOLS AND EQUIPMENT  
CORPORATION



14427 GOVERNORS DRIVE, BANCAL CARMONA, CAVITE BESIDE WELBORNE ONDUSTRIAL ( GREEN PARKING LOT)

# MACHINES

## AVAILABLE MACHINES

**PLASMA CUTTING MACHINE, ARC WELDING MACHINE, WELDING MACHINE, Battery Operated Welding Machine, PIPE THREADING MACHINE, BENCH DRILLING MACHINE, WET CORE DRILL MACHINE, HOLE CUTTING MACHINE, PORTABLE MULTI PURPOSE MACHINE, MIG WELDING MACHINE, INVERTER TIG MACHINE, INVERTER AIR PLASMA MACHINE, CO2 WELDING MACHINE, CO2 MIG MACHINE,**



**KSUN 80A**

**KSUN 50A**

**KSU PIPE THREADING**



**KSU-HC100A**

**HOLE CUTTING**



**DM10**

**DM13**

**DM19**

**BENCH DRILLING**

LANDLINE: 046 409 6236  
GLOBE: 0966-227-5158  
VIBER: 0966-227-5157

**BUY NOW**

**KDG TOOLS AND EQUIPMENT  
CORPORATION**



14427 GOVERNORS DRIVE, BANCAL CARMONA, CAVITE BESIDE WELBORNE ONDUSTRIAL ( GREEN PARKING LOT)

YOUR ONE STOP  
INDUSTRIAL SHOP

# POWER TOOLS



[kdgtools@gmail.com](mailto:kdgtools@gmail.com)

FOR MORE MACHINE  
AND PRODUCTS  
MESSAGE US OR  
VISIT OUR SHOP



VISIT NOW

## AVAILABLE POWER TOOLS:

- BRAND: STANLEY, ES, MAKITA, HITACHI
- DRILL
- GRINDER
- WRENCH
- HAMMER
- SAW
- VENTILATOR

LANDLINE: 046 409 6236  
GLOBE: 0966-227-5158  
VIBER: 0966-227-5157

14427 GOVERNORS DRIVE, BANCAL  
CARMONA, CAVITE BESIDE WELBORNE  
INDUSTRIAL ( GREEN PARKING LOT)

# POWER TOOLS

## AVAILABLE POWER TOOLS

**Circular Saw, Cut-Off Machine, Hammer drill, Demolition Hammer, Rotary Hammer Drill, Hammer Drill Impact Driver Brushless Combo, Electric Grinder, Reciprocating Saw, Cordless Hammer Drill, Miter Saw, Drywall Screwdriver, Electric Hammer (Chipping Gun), Electric Hammer Drill (Jack Hammer), Diamond Cord Drill, Electric Drill Gun,**



**S409**

**Circular Saw 9"**



**S907**

**Circular Saw**



**C314**

**Cut-Off Machine 14"**



**C514**

**Cut-Off Machine 14"**



**SSC22**

**Chop Saw (Cut-off)**



**YONG SOO 16"**

**Cut-off Machine**

LANDLINE: 046 409 6236  
GLOBE: 0966-227-5158  
VIBER: 0966-227-5157

**BUY NOW**

KDG TOOLS AND EQUIPMENT  
CORPORATION



14427 GOVERNORS DRIVE, BANCAL CARMONA, CAVITE BESIDE WELBORNE INDUSTRIAL ( GREEN PARKING LOT)

# POWER TOOLS

## AVAILABLE POWER TOOLS

**Circular Saw, Cut-Off Machine, Hammer drill, Demolition Hammer, Rotary Hammer Drill, Hammer Drill Impact Driver Brushless Combo, Electric Grinder, Reciprocating Saw, Cordless Hammer Drill, Miter Saw, Drywall Screwdriver, Electric Hammer (Chipping Gun), Electric Hammer Drill (Jack Hammer), Diamond Cord Drill, Electric Drill Gun,**



**SBD721**

**HAMMER DRILL**



**STHM5KH-KR**

**Demolition Hammer**



**SHR263K**

**Rotary Hammer Drill**



**SBD1469M2T**

**Hammer Drill Impact Driver Brushless Combo**



**SBD721M2K**

**Hammer Drill Brushless**



**STGS7100**

**Electric Grinder**

LANDLINE: 046 409 6236  
GLOBE: 0966-227-5158  
VIBER: 0966-227-5157

**BUY NOW**

KDG TOOLS AND EQUIPMENT CORPORATION



14427 GOVERNORS DRIVE, BANCAL CARMONA, CAVITE BESIDE WELBORNE INDUSTRIAL ( GREEN PARKING LOT)

# POWER TOOLS

## AVAILABLE POWER TOOLS

**Circular Saw, Cut-Off Machine, Hammer drill, Demolition Hammer, Rotary Hammer Drill, Hammer Drill Impact Driver Brushless Combo, Electric Grinder, Reciprocating Saw, Cordless Hammer Drill, Miter Saw, Drywall Screwdriver, Electric Hammer (Chipping Gun), Electric Hammer Drill (Jack Hammer), Diamond Cord Drill, Electric Drill Gun,**



**DCS380M2**

**Cordless Reciprocating Saw**



**DCH253M2**

**Cordless Hammer Drill**



**DCH364M2**

**Cordless Hammer Drill**



**SDH700KV**

**Hammer Drill Brushless**



**STH10-75984**

**STANLEY TOOL SET**



**SBR20M2K**

**Hammer Drill Brushless**

LANDLINE: 046 409 6236  
GLOBE: 0966-227-5158  
VIBER: 0966-227-5157

**BUY NOW**

KDG TOOLS AND EQUIPMENT CORPORATION



14427 GOVERNORS DRIVE, BANCAL CARMONA, CAVITE BESIDE WELBORNE INDUSTRIAL ( GREEN PARKING LOT)

# POWER TOOLS

## AVAILABLE POWER TOOLS

**Circular Saw, Cut-Off Machine, Hammer drill, Demolition Hammer, Rotary Hammer Drill, Hammer Drill Impact Driver Brushless Combo, Electric Grinder, Reciprocating Saw, Cordless Hammer Drill, Miter Saw, Drywall Screwdriver, Electric Hammer (Chipping Gun), Electric Hammer Drill (Jack Hammer), Diamond Cord Drill, Electric Drill Gun,**



**STEL365**

**Reciprocating Saw  
900W**



**DW717 (10")**

**Miter Saw**



**DW341K**

**Jig Saw**



**DWS780**

**Miter Saw**



**DW713**

**Miter Saw**



**DCF620D2K**

**Drywall Screwdriver**

LANDLINE: 046 409 6236  
GLOBE: 0966-227-5158  
VIBER: 0966-227-5157

**BUY NOW**

KDG TOOLS AND EQUIPMENT  
CORPORATION



14427 GOVERNORS DRIVE, BANCAL CARMONA, CAVITE BESIDE WELBORNE ONDUSTRIAL ( GREEN PARKING LOT)

# POWER TOOLS

## AVAILABLE POWER TOOLS

**Circular Saw, Cut-Off Machine, Hammer drill, Demolition Hammer, Rotary Hammer Drill, Hammer Drill Impact Driver Brushless Combo, Electric Grinder, Reciprocating Saw, Cordless Hammer Drill, Miter Saw, Drywall Screwdriver, Electric Hammer (Chipping Gun), Electric Hammer Drill (Jack Hammer), Diamond Cord Drill, Electric Drill Gun,**



**DW293 (1/2D)**

**Impact Wrench**



**D25132K**

**Rotary  
Hammer Drill**



**D28491**

**Angle Grinder**



**DG100**

**Angle Grinder 4"**



**DG-180FB**

**Angle Grinder 7"**



**PHD-3800**

**Hammer Drill  
(Chipping Gun)**

LANDLINE: 046 409 6236  
GLOBE: 0966-227-5158  
VIBER: 0966-227-5157

**BUY NOW**

KDG TOOLS AND EQUIPMENT  
CORPORATION



# POWER TOOLS

## AVAILABLE POWER TOOLS

**Circular Saw, Cut-Off Machine, Hammer drill, Demolition Hammer, Rotary Hammer Drill, Hammer Drill Impact Driver Brushless Combo, Electric Grinder, Reciprocating Saw, Cordless Hammer Drill, Miter Saw, Drywall Screwdriver, Electric Hammer (Chipping Gun), Electric Hammer Drill (Jack Hammer), Diamond Cord Drill, Electric Drill Gun,**



**H642**

**Electric Hammer  
(Chipping Gun)**



**D1013**

**Electric  
Drill(13mm)**



**H465**

**Electric Hammer Drill  
(Jack Hammer)**



**DC1004**

**Diamond Cord  
Drill**



**D913**

**Impact Drill**



**6481**

**Electric Drill Gun**

LANDLINE: 046 409 6236  
GLOBE: 0966-227-5158  
VIBER: 0966-227-5157

**BUY NOW**

KDG TOOLS AND EQUIPMENT  
CORPORATION



14427 GOVERNORS DRIVE, BANCAL CARMONA, CAVITE BESIDE WELBORNE INDUSTRIAL ( GREEN PARKING LOT)

# POWER TOOLS

## AVAILABLE POWER TOOLS

**Circular Saw, Cut-Off Machine, Hammer drill, Demolition Hammer, Rotary Hammer Drill, Hammer Drill Impact Driver Brushless Combo, Electric Grinder, Reciprocating Saw, Cordless Hammer Drill, Miter Saw, Drywall Screwdriver, Electric Hammer (Chipping Gun), Electric Hammer Drill (Jack Hammer), Diamond Cord Drill, Electric Drill Gun,**



**G309**

**Angle Grinder**



**G805**

**Angle Grinder**



**G704**

**Angle Grinder**



**EKG104**

**Angle Grinder**



**H124**

**Rotary Hammer Drill (24mm)**

LANDLINE: 046 409 6236  
GLOBE: 0966-227-5158  
VIBER: 0966-227-5157

**BUY NOW**

KDG TOOLS AND EQUIPMENT CORPORATION



14427 GOVERNORS DRIVE, BANCAL CARMONA, CAVITE BESIDE WELBORNE INDUSTRIAL ( GREEN PARKING LOT)

YOUR ONE STOP  
INDUSTRIAL SHOP

# AIR TOOLS



[kdgtools@gmail.com](mailto:kdgtools@gmail.com)

FOR MORE MACHINE  
AND PRODUCTS  
MESSAGE US OR  
VISIT OUR SHOP



VISIT NOW

## AVAILABLE AIR TOOLS:

- COMPRESSOR
- GREASE PUMP
- AIR GRINDER
- CHIPPING HAMMER
- AIR BREAKER
- HAMMER DRILL
- CHISEL
- IMPACT WRENCH

LANDLINE: 046 409 6236  
GLOBE: 0966-227-5158  
VIBER: 0966-227-5157

14427 GOVERNORS DRIVE, BANCAL  
CARMONA, CAVITE BESIDE WELBORNE  
INDUSTRIAL ( GREEN PARKING LOT)

# AIR TOOLS

## AVAILABLE AIR TOOLS

**Compressor, Pump, Grinder, Air Chipping Hammer, Air Drill, Impact Wrench, Air Jet Chisel, Polisher**



**Oil Type  
Compressor**



**Industrial  
Compressor**



**Belt Type  
Compressor**



**GREASE PUMP**



**Micro Air Grinder**



**Air Die Grinder**



**Air Chipping  
Hammer**



**Air Coal Chipping  
Hammer**



**Air Breaker**

LANDLINE: 046 409 6236  
GLOBE: 0966-227-5158  
VIBER: 0966-227-5157

**BUY NOW**

KDG TOOLS AND EQUIPMENT  
CORPORATION



14427 GOVERNORS DRIVE, BANCAL CARMONA, CAVITE BESIDE WELBORNE ONDUSTRIAL ( GREEN PARKING LOT)

# AIR TOOLS

## AVAILABLE AIR TOOLS

**Compressor, Pump, Grinder, Air Chipping Hammer, Air Drill, Impact Wrench, Air Jet Chisel, Polisher**



**Reversible Air Drill**



**Air Hammer Drill**



**Air Jet Chisel**



**Air Impact Wrench**



**Air Impact Wrench**



**Air Impact Wrench**



**Air Impact Driver**



**Air Impact Ratchet Wrench**



**Angle Polisher**

LANDLINE: 046 409 6236  
GLOBE: 0966-227-5158  
VIBER: 0966-227-5157

**BUY NOW**

KDG TOOLS AND EQUIPMENT  
CORPORATION



14427 GOVERNORS DRIVE, BANCAL CARMONA, CAVITE BESIDE WELBORNE INDUSTRIAL ( GREEN PARKING LOT)

YOUR ONE STOP  
INDUSTRIAL SHOP

# ELECTRICAL ITEMS



kdgtools@gmail.com

FOR MORE MACHINE  
AND PRODUCTS  
MESSAGE US OR  
VISIT OUR SHOP



VISIT NOW

## AVAILABLE ELECTRICAL ITEMS:

- TERMINAL LUGS
- BOOTLACE LUGS
- CIRCUIT BREAKER
- ELECTRIC PLUG
- SOCKET
- ROYAL CORD
- OUTLET
- MULTI TESTER

LANDLINE: 046 409 6236  
GLOBE: 0966-227-5158  
VIBER: 0966-227-5157

14427 GOVERNORS DRIVE, BANCAL  
CARMONA, CAVITE BESIDE WELBORNE  
INDUSTRIAL ( GREEN PARKING LOT)

# ELECTRICAL ITEMS

## AVAILABLE ELECTRICAL ITEMS

**Terminal Lugs, Bootlace Lugs, Circuit Breaker, Electric Plug & Socket, Royal Cord, Outlet, Multi Tester**

### Heavy Duty



**Terminal Lugs  
Copper**



**Terminal Lugs  
Color Coding**

### U-Type

### Ring Type



**Terminal Lugs  
Insulated**



**Terminal Lugs  
Ring Type**



**Terminal Lugs  
U-Type**



**Bootlace Lugs**



**Earth Leakage  
Circuit Breaker**



**Molded Case Circuit  
Breaker**



**Magnetic  
Contactor**

LANDLINE: 046 409 6236  
GLOBE: 0966-227-5158  
VIBER: 0966-227-5157

**BUY NOW**

KDG TOOLS AND EQUIPMENT  
CORPORATION



14427 GOVERNORS DRIVE, BANCAL CARMONA, CAVITE BESIDE WELBORNE INDUSTRIAL ( GREEN PARKING LOT)

# ELECTRICAL ITEMS

## AVAILABLE ELECTRICAL ITEMS

**Terminal Lugs, Bootlace Lugs, Circuit Breaker, Electric Plug & Socket, Royal Cord, Outlet, Multi Tester**

**Yellow**

**Red**



**Extension Cord Reel with Breaker**



**Multi Outlet With Rubber Cover**

**Royal Cord electric cable**

**Welding Cable**

**Heat Shrinkable Tube**



**Cable**



**Electric Plug and Socket**

**3way water resist outlet**



**Multiple Outlet 3way**

**exposed outlet 2&3 gang**



**electric plug 2p X 16A**

**Outlet and Plug**

**ST-505TR**



**Multi Tester**

**ST-303TRA**



**Multi Tester**

**TK-3200A**



**Digital Tester Pocket Type**

LANDLINE: 046 409 6236  
GLOBE: 0966-227-5158  
VIBER: 0966-227-5157

**BUY NOW**

**KDG TOOLS AND EQUIPMENT CORPORATION**



14427 GOVERNORS DRIVE, BANCAL CARMONA, CAVITE BESIDE WELBORNE INDUSTRIAL ( GREEN PARKING LOT)

YOUR ONE STOP  
INDUSTRIAL SHOP

# HAND TOOLS



[kdgtools@gmail.com](mailto:kdgtools@gmail.com)

FOR MORE MACHINE  
AND PRODUCTS  
MESSAGE US OR  
VISIT OUR SHOP



VISIT NOW

## AVAILABLE HAND TOOLS:

- SCREW DRIVER
- WIRE STRIPPER
- HAND RIVETER
- PLIERS
- WRENCH
- CLAMP
- ADAPTOR
- SOCKET
- ETC.

LANDLINE: 046 409 6236  
GLOBE: 0966-227-5158  
VIBER: 0966-227-5157

14427 GOVERNORS DRIVE, BANCAL  
CARMONA, CAVITE BESIDE WELBORNE  
INDUSTRIAL ( GREEN PARKING LOT)

# HAND TOOLS

## AVAILABLE HAND TOOLS

**Pliers, Riveters, Wrench, Impact Socket, Extension Bar, Head Driver, Sliding T-Handle, Screw Driver, Hammer, Stone Hammer, etc.**



**HAND CABLE CUTTER**



**DIAGONAL CUTTING PLIER**



**POWER CUTTING PLIER**



**Long Nose Plier**



**Wire Stripper**



**Hand Riveter**



**Side Cutting Plier**



**Molded Case Circuit Breaker**



**Vise Grip/ Locking Plier**

LANDLINE: 046 409 6236  
GLOBE: 0966-227-5158  
VIBER: 0966-227-5157

**BUY NOW**

KDG TOOLS AND EQUIPMENT CORPORATION



14427 GOVERNORS DRIVE, BANCAL CARMONA, CAVITE BESIDE WELBORNE ONDUSTRIAL ( GREEN PARKING LOT)

# HAND TOOLS

## AVAILABLE HAND TOOLS

**Pliers, Riverters, Wrench, Impact Socket, Extension Bar, Head Driver, Sliding T-Handle, Screw Driver, Hammer, Stone Hammer, etc.**



**Motor Wrench**



**Adjustable Wrench**



**Locking Welding Clamp**



**Ball End Hex L-KEY SET**



**HEX L-KEY SET ON KEY RING**



**ALLEN WRENCH**



**SLUGGING RING WRENCH**



**RATCHET WRENCH**



**REVERSIBLE RATCHET**

LANDLINE: 046 409 6236  
GLOBE: 0966-227-5158  
VIBER: 0966-227-5157

**BUY NOW**

KDG TOOLS AND EQUIPMENT CORPORATION



14427 GOVERNORS DRIVE, BANCAL CARMONA, CAVITE BESIDE WELBORNE ONDUSTRIAL ( GREEN PARKING LOT)

# HAND TOOLS

## AVAILABLE HAND TOOLS

**Pliers, Riveters, Wrench, Impact Socket, Extension Bar, Head Driver, Sliding T-Handle, Screw Driver, Hammer, Stone Hammer, etc.**



**TERMINAL LUG  
CRIMPING TOOL**



**ALUMINUM PIPE  
WRENCH**



**METAL TIN SNIP**



**AUTOMATIC WIRE  
STRIPPER**



**CABLE CUTTER**



**BOLT CUTTER**



**STEEL PIPE WRENCH**



**BALL ADAPTOR**



**HAND EXTENSION  
BAR**

LANDLINE: 046 409 6236  
GLOBE: 0966-227-5158  
VIBER: 0966-227-5157

**BUY NOW**

KDG TOOLS AND EQUIPMENT  
CORPORATION



# HAND TOOLS

## AVAILABLE HAND TOOLS

**Pliers, Riverters, Wrench, Impact Socket, Extension Bar, Head Driver, Sliding T-Handle, Screw Driver, Hammer, Stone Hammer, etc.**



**SDS DRILL CHUCK ADAPTOR**



**COMBINATION WRENCH**



**SPEED HANDLE**



**SOCKET T-HANDLE T-WRENCH**



**T-HANDLE WRENCH W/ SPARK PLUG SOCKET**



**SLIDING T-HANDLE**



**HINGE HANDLE**



**HAND EXTENSION BAR**



**LONG HINGE HANDLE EXTENDABLE**

LANDLINE: 046 409 6236  
GLOBE: 0966-227-5158  
VIBER: 0966-227-5157

**BUY NOW**

KDG TOOLS AND EQUIPMENT CORPORATION



14427 GOVERNORS DRIVE, BANCAL CARMONA, CAVITE BESIDE WELBORNE INDUSTRIAL ( GREEN PARKING LOT)

# HAND TOOLS

## AVAILABLE HAND TOOLS

**Pliers, Riveters, Wrench, Impact Socket, Extension Bar, Head Driver, Sliding T-Handle, Screw Driver, Hammer, Stone Hammer, etc.**



**QUICK CHANGE  
CHUCK SET**



**HAND SOCKET  
MULTI EDGE**



**DRILL CHUCK  
ADAPTOR IMPACT**



**DRILL CHUCK**



**BALL JOINT IMPACT  
ADAPTOR**



**IMPACT SOCKET  
ADAPTOR**



**TRIPLE SQUARE HEAD  
DRIVER**



**HEX BIT SOCKET**



**HEX BIT SOCKET BALL  
END**

LANDLINE: 046 409 6236  
GLOBE: 0966-227-5158  
VIBER: 0966-227-5157

**BUY NOW**

KDG TOOLS AND EQUIPMENT  
CORPORATION



# HAND TOOLS

## AVAILABLE HAND TOOLS

**Pliers, Riverters, Wrench, Impact Socket, Extension Bar, Head Driver, Sliding T-Handle, Screw Driver, Hammer, Stone Hammer, etc.**



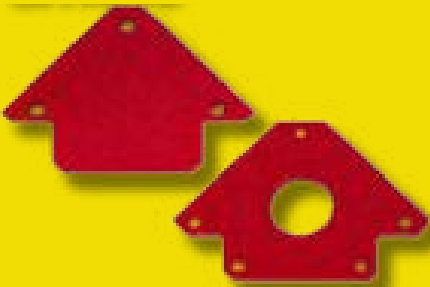
**IMPACT DEEP SOCKET**



**IMPACT SOCKET**



**CUP BRUSH**



**ARROW MAGNETIC WELDING HOLDER**



**SHAFT FLAP WHEEL**



**IMPACT SOCKET ADAPTOR**



**AIR SPRAY GUN**



**AIR SAND BLAST GUN**



**HULP SPRAY GUN**

LANDLINE: 046 409 6236  
GLOBE: 0966-227-5158  
VIBER: 0966-227-5157

**BUY NOW**

KDG TOOLS AND EQUIPMENT CORPORATION



14427 GOVERNORS DRIVE, BANCAL CARMONA, CAVITE BESIDE WELBORNE INDUSTRIAL ( GREEN PARKING LOT)

# HAND TOOLS

## AVAILABLE HAND TOOLS

**Pliers, Riverters, Wrench, Impact Socket, Extension Bar, Head Driver, Sliding T-Handle, Screw Driver, Hammer, Stone Hammer, etc.**



SOCKET WRENCH  
SET



SOCKET WRENCH  
SET



SOCKET WRENCH  
SET



STAR SOCKET  
WRENCH SET



HAND SOCKET SET  
METRIC



MIKE SCREW  
DRIVER



SCREW DRIVER BALL  
GRIP



REVERSIBLE SCREW  
DRIVER BALL GRIP



REVERSIBLE SCREW  
DRIVER

LANDLINE: 046 409 6236  
GLOBE: 0966-227-5158  
VIBER: 0966-227-5157

**BUY NOW**

KDG TOOLS AND EQUIPMENT  
CORPORATION



14427 GOVERNORS DRIVE, BANCAL CARMONA, CAVITE BESIDE WELBORNE ONDUSTRIAL ( GREEN PARKING LOT)

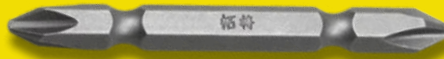
# HAND TOOLS

## AVAILABLE HAND TOOLS

**Pliers, Riverters, Wrench, Impact Socket, Extension Bar, Head Driver, Sliding T-Handle, Screw Driver, Hammer, Stone Hammer, etc.**



REVERSIBLE  
SCREW DRIVER



AIR DRIVER BIT



AIR BLOW GUN



STONE HAMMER



DEAD BLOW HAMMER



LINE COLOR  
SCREW DRIVER



SILICON GUN



CAULKING GUN



FOAM GUN SEALANT

LANDLINE: 046 409 6236  
GLOBE: 0966-227-5158  
VIBER: 0966-227-5157

**BUY NOW**

KDG TOOLS AND EQUIPMENT  
CORPORATION



14427 GOVERNORS DRIVE, BANCAL CARMONA, CAVITE BESIDE WELBORNE ONDUSTRIAL ( GREEN PARKING LOT)

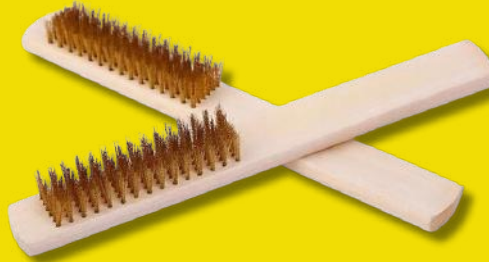
# HAND TOOLS

## AVAILABLE HAND TOOLS

**Pliers, Riveters, Wrench, Impact Socket, Extension Bar, Head Driver, Sliding T-Handle, Screw Driver, Hammer, Stone Hammer, etc.**



**Chalk Stone**



**Wood Brush Steel**



**Mounted Stone**



**Paint Marker**



**Ink**



**Abrasive Cloth Roll**



**Grinder Tool Wrench**



**Carabiner**



**Multi Wrench**

LANDLINE: 046 409 6236  
GLOBE: 0966-227-5158  
VIBER: 0966-227-5157

**BUY NOW**

KDG TOOLS AND EQUIPMENT CORPORATION



14427 GOVERNORS DRIVE, BANCAL CARMONA, CAVITE BESIDE WELBORNE INDUSTRIAL ( GREEN PARKING LOT)

## AVAILABLE HAND TOOLS

**Pliers, Riveters, Wrench, Impact Socket, Extension Bar, Head Driver, Sliding T-Handle, Screw Driver, Hammer, Stone Hammer, etc.**



**Electrical Tape**



**Duct Tape**



**Teflon Tape**



**Scotch Tape**



**Masking Tape**



**Caution Tape**



**Danger Tape**



**Packaging Tape**



**Yellow Tape**

LANDLINE: 046 409 6236  
GLOBE: 0966-227-5158  
VIBER: 0966-227-5157

**BUY NOW**

KDG TOOLS AND EQUIPMENT  
CORPORATION



# HAND TOOLS

## AVAILABLE HAND TOOLS

**Pliers, Riveters, Wrench, Impact Socket, Extension Bar, Head Driver, Sliding T-Handle, Screw Driver, Hammer, Stone Hammer, etc.**



**Collect Chuck**



**Mig Tip Holder**



**Tig Connector Nut Type**



**Co2 Spring Liner Nipple**



**Mig Tip Nozzle**



**Co2 Contact Tip**



**Co2 Outgoing Guide**



**Hose Nipple**



**Co2 Gas Diffuser**

LANDLINE: 046 409 6236  
GLOBE: 0966-227-5158  
VIBER: 0966-227-5157

**BUY NOW**

KDG TOOLS AND EQUIPMENT CORPORATION



14427 GOVERNORS DRIVE, BANCAL CARMONA, CAVITE BESIDE WELBORNE INDUSTRIAL ( GREEN PARKING LOT)

# HAND TOOLS

## AVAILABLE HAND TOOLS

**Pliers, Riveters, Wrench, Impact Socket, Extension Bar, Head Driver, Sliding T-Handle, Screw Driver, Hammer, Stone Hammer, etc.**



**Co2 Insulator**



**Military Standard Connector**



**Circular Connector**



**Tig Gas Nipple**



**Argon Hose Clamp**



**Parts Of Feeder Bracket Adaptor**



**Parts Of Feeder Bracket Adaptor**



**Wire Feeder Roller**



**Ceramic Nozzle Brass and Korean Type**

LANDLINE: 046 409 6236  
GLOBE: 0966-227-5158  
VIBER: 0966-227-5157

**BUY NOW**

KDG TOOLS AND EQUIPMENT CORPORATION



14427 GOVERNORS DRIVE, BANCAL CARMONA, CAVITE BESIDE WELBORNE INDUSTRIAL ( GREEN PARKING LOT)

# HAND TOOLS

## AVAILABLE HAND TOOLS

**Pliers, Riverters, Wrench, Impact Socket, Extension Bar, Head Driver, Sliding T-Handle, Screw Driver, Hammer, Stone Hammer, etc.**



**Welding  
Connector Plug**



**Welding  
Connector Socket**



**Welding  
Connector Socket**



**Tig Torch Switch  
With Wire**



**Tig Torch Head**



**Tig Torch Head  
Flexible**



**Tig Torch Head Fix  
Type**



**Tig Torch Head Air  
Cooling Flexible**



**Tig Torch With  
Switch**

LANDLINE: 046 409 6236  
GLOBE: 0966-227-5158  
VIBER: 0966-227-5157

**BUY NOW**

KDG TOOLS AND EQUIPMENT  
CORPORATION



14427 GOVERNORS DRIVE, BANCAL CARMONA, CAVITE BESIDE WELBORNE ONDUSTRIAL ( GREEN PARKING LOT)

YOUR ONE STOP  
INDUSTRIAL SHOP

# SAFETY ITEMS



[kdgtools@gmail.com](mailto:kdgtools@gmail.com)

FOR MORE MACHINE  
AND PRODUCTS  
MESSAGE US OR  
VISIT OUR SHOP



VISIT NOW

## AVAILABLE SAFETY ITEMS:

- GLOVES
- SAFETY GOGGLES
- SAFETY VEST
- SAFETY HARNESS
- SAFETY SHOES
- RAIN BOOTS
- RAIN COAT
- RESPIRATOR
- MASK

LANDLINE: 046 409 6236  
GLOBE: 0966-227-5158  
VIBER: 0966-227-5157

14427 GOVERNORS DRIVE, BANCAL  
CARMONA, CAVITE BESIDE WELBORNE  
INDUSTRIAL ( GREEN PARKING LOT)

# SAFETY ITEMS

## AVAILABLE SAFETY ITEMS

**Safety Gloves, Safety Vest, Safety Goggles, Safety Shoes, Rain coat, Rain Boots, Safety Harness, Respirator Mask, Welding mask/Helmet**



**Half Coated  
Gloves**



**Cotton Gloves**



**Nylon Palm  
Coating Gloves**



**PVC Gloves**



**Welding Gloves  
Orange**



**Welding Gloves  
Short**



**WELDING GLOVES  
MIJORI**



**WORK GLOVES TIG  
GLOVES**



**Half Cut White  
Gloves**

LANDLINE: 046 409 6236  
GLOBE: 0966-227-5158  
VIBER: 0966-227-5157

**BUY NOW**

**KDG TOOLS AND EQUIPMENT  
CORPORATION**



14427 GOVERNORS DRIVE, BANCAL CARMONA, CAVITE BESIDE WELBORNE ONDUSTRIAL ( GREEN PARKING LOT)

# SAFETY ITEMS

## AVAILABLE SAFETY ITEMS

**Safety Gloves, Safety Vest, Safety Goggles, Safety Shoes, Rain coat, Rain Boots, Safety Harness, Respirator Mask, Welding mask/Helmet**



**Safety Vest Belt  
Type Green**



**Safety Vest Belt  
Type Orange**



**Safety Vest Traffic  
Orange**



**Safety Vest Silver  
Reflective Mesh**



**Safety Vest Green with  
Silver Reflective Stripe**



**Safety Vest  
Security Green**



**Safety Vest Security  
Orange**



**Safety Harness  
Full Body**



**Full Body Spring Type  
Aluminum Y-Lock**

LANDLINE: 046 409 6236  
GLOBE: 0966-227-5158  
VIBER: 0966-227-5157

**BUY NOW**

KDG TOOLS AND EQUIPMENT  
CORPORATION



# SAFETY ITEMS

## AVAILABLE SAFETY ITEMS

**Safety Gloves, Safety Vest, Safety Goggles, Safety Shoes, Rain coat, Rain Boots, Safety Harness, Respirator Mask, Welding mask/Helmet**



**Rain Boots Rubber with Steel Toe**



**Rain Boots Rubber**



**Omaga Safety Shoes**



**Camel Safety Shoes**



**MG Safety Shoes**



**Alloy Safety Shoes**



**Rain Coat**



**Rain Coat**



**Rain Coat**

LANDLINE: 046 409 6236  
GLOBE: 0966-227-5158  
VIBER: 0966-227-5157

**BUY NOW**

KDG TOOLS AND EQUIPMENT CORPORATION



# SAFETY ITEMS

## AVAILABLE SAFETY ITEMS

**Safety Gloves, Safety Vest, Safety Goggles, Safety Shoes, Rain coat, Rain Boots, Safety Harness, Respirator Mask, Welding mask/Helmet**



**Helmet Safety Goggles**



**Safety Goggles Blue Lining Clear**



**Safety Goggles Dark Black**



**Welding Mask**



**Welding Mask With Handle**



**Auto Darkening Welding Mask**



**3M Gas Vapor Respirator**



**3M Dust Respirator**



**Clean Top Dust Mask**

LANDLINE: 046 409 6236  
GLOBE: 0966-227-5158  
VIBER: 0966-227-5157

**BUY NOW**

KDG TOOLS AND EQUIPMENT CORPORATION



14427 GOVERNORS DRIVE, BANCAL CARMONA, CAVITE BESIDE WELBORNE ONDUSTRIAL ( GREEN PARKING LOT)

# SAFETY ITEMS

## AVAILABLE SAFETY ITEMS

**Safety Gloves, Safety Vest, Safety Goggles, Safety Shoes, Rain coat, Rain Boots, Safety Harness, Respirator Mask, Welding mask/Helmet**



**Welding Apron(Leather)**



**Leather Welding Jacket**



**Welding Pants**



**Arm Wristlet Jeans**



**Welding Jacket Jeans**



**Coverall**



**Signal Baton**



**Traffic Gloves**



**Safety Helmet**

LANDLINE: 046 409 6236  
GLOBE: 0966-227-5158  
VIBER: 0966-227-5157

**BUY NOW**

KDG TOOLS AND EQUIPMENT CORPORATION



YOUR ONE STOP  
INDUSTRIAL SHOP

# FITTINGS



[kdgtools@gmail.com](mailto:kdgtools@gmail.com)

FOR MORE MACHINE  
AND PRODUCTS  
MESSAGE US OR  
VISIT OUR SHOP



VISIT NOW

## AVAILABLE FITTINGS:

- ONE TOUCH FITTINGS  
PNEUMATIC CONNECTOR
- SPEED CONTROLLER
- AIR COUPLER SOCKET
- AIR NUT COUPLER
- AIR LINE COUPLER
- AIR COUPLER PLUG  
MALE/FEMALE
- AIR NUT COUPLER SOCKET

LANDLINE: 046 409 6236  
GLOBE: 0966-227-5158  
VIBER: 0966-227-5157

14427 GOVERNORS DRIVE, BANCAL  
CARMONA, CAVITE BESIDE WELBORNE  
INDUSTRIAL ( GREEN PARKING LOT)

# FITTINGS

## AVAILABLE CONNECTOR

**One Touch Fittings/ Pneumatic Connector, Speed Controller, Air Coupler Socket, Air Nut Coupler, Air Line Coupler, Air Coupler Plug Male/Female, Air Nut Coupler Socket**



### ONE TOUCH FITTINGS/ PNEUMATIC CONNECTOR

|                               |          |
|-------------------------------|----------|
| One Touch Fittings(PU Y-Type) | Y x 12mm |
| One Touch Fittings(PU Y-Type) | Y x 10mm |
| One Touch Fittings(PU Y-Type) | Y x 8mm  |
| One Touch Fittings(PU Y-Type) | Y x 6mm  |
| One Touch Fittings(PU Y-Type) | Y x 4mm  |



### ONE TOUCH FITTINGS/ PNEUMATIC CONNECTOR

|                                     |            |
|-------------------------------------|------------|
| Reduced One Touch Fittings(PG Type) | 6mm- 4mm   |
| Reduced One Touch Fittings(PG Type) | 8mm- 4mm   |
| Reduced One Touch Fittings(PG Type) | 8mm- 6mm   |
| Reduced One Touch Fittings(PG Type) | 10mm- 6mm  |
| Reduced One Touch Fittings(PG Type) | 10mm- 8mm  |
| Reduced One Touch Fittings(PG Type) | 12mm- 8mm  |
| Reduced One Touch Fittings(PG Type) | 12mm- 10mm |



### ONE TOUCH FITTINGS/ PNEUMATIC CONNECTOR

|                              |            |
|------------------------------|------------|
| One Touch Fittings(PUL Type) | 90° x 4mm  |
| One Touch Fittings(PUL Type) | 90° x 6mm  |
| One Touch Fittings(PUL Type) | 90° x 8mm  |
| One Touch Fittings(PUL Type) | 90° x 10mm |
| One Touch Fittings(PUL Type) | 90° x 12mm |

LANDLINE: 046 409 6236  
GLOBE: 0966-227-5158  
VIBER: 0966-227-5157

**BUY NOW**

KDG TOOLS AND EQUIPMENT  
CORPORATION



14427 GOVERNORS DRIVE, BANCAL CARMONA, CAVITE BESIDE WELBORNE ONDUSTRIAL ( GREEN PARKING LOT)

# FITTINGS

## AVAILABLE CONNECTOR

**One Touch Fittings/ Pneumatic Connector, Speed Controller, Air Coupler Socket, Air Nut Coupler, Air Line Coupler, Air Coupler Plug Male/Female, Air Nut Coupler Socket**

### ONE TOUCH FITTINGS/ PNEUMATIC CONNECTOR



| One Touch Fittings(PL Type) |
|-----------------------------|
| One Touch Fittings(PL Type) |
| Elbow 1/8"PT x 4mm x 90°    |
| Elbow 1/8"PT x 6mm x 90°    |
| Elbow 1/8"PT x 8mm x 90°    |
| Elbow 1/8"PT x 10mm x 90°   |
| Elbow 1/8"PT x 12mm x 90°   |
| Elbow 1/4"PT x 4mm x 90°    |
| Elbow 1/4"PT x 6mm x 90°    |
| Elbow 1/4"PT x 8mm x 90°    |
| Elbow 1/4"PT x 10mm x 90°   |
| Elbow 1/4"PT x 12mm x 90°   |
| Elbow 1/4"PT x 16mm x 90°   |

|                           |
|---------------------------|
| Elbow 3/8"PT x 4mm x 90°  |
| Elbow 3/8"PT x 6mm x 90°  |
| Elbow 3/8"PT x 8mm x 90°  |
| Elbow 3/8"PT x 10mm x 90° |
| Elbow 3/8"PT x 12mm x 90° |
| Elbow 3/8"PT x 16mm x 90° |
| Elbow 1/2"PT x 4mm x 90°  |
| Elbow 1/2"PT x 6mm x 90°  |
| Elbow 1/2"PT x 8mm x 90°  |
| Elbow 1/2"PT x 10mm x 90° |
| Elbow 1/2"PT x 12mm x 90° |
| Elbow 1/2"PT x 16mm x 90° |

### ONE TOUCH FITTINGS/ PNEUMATIC CONNECTOR



| One Touch Fittings (Tee) (PT Type) | 6mm-1mm 1/8"PT  |
|------------------------------------|-----------------|
| One Touch Fittings (Tee) (PT Type) | 8mm-1mm 1/8"PT  |
| One Touch Fittings (Tee) (PT Type) | 10mm-1mm 1/8"PT |
| One Touch Fittings (Tee) (PT Type) | 12mm-1mm 1/8"PT |
| One Touch Fittings (Tee) (PT Type) | 6mm-2mm 1/4"PT  |
| One Touch Fittings (Tee) (PT Type) | 8mm-2mm 1/4"PT  |
| One Touch Fittings (Tee) (PT Type) | 10mm-2mm 1/4"PT |
| One Touch Fittings (Tee) (PT Type) | 6mm-3mm 3/8"PT  |
| One Touch Fittings (Tee) (PT Type) | 8mm-3mm 3/8"PT  |
| One Touch Fittings (Tee) (PT Type) | 10mm-3mm 3/8"PT |
| One Touch Fittings (Tee) (PT Type) | 12mm-3mm 3/8"PT |
| One Touch Fittings (Tee) (PT Type) | 6mm-4mm 1/2"PT  |
| One Touch Fittings (Tee) (PT Type) | 8mm-4mm 1/2"PT  |
| One Touch Fittings (Tee) (PT Type) | 10mm-4mm 1/2"PT |
| One Touch Fittings (Tee) (PT Type) | 12mm-4mm 1/2"PT |
| One Touch Fittings (Tee) (PT Type) | 6mm-1mm 1/8"PT  |

LANDLINE: 046 409 6236  
GLOBE: 0966-227-5158  
VIBER: 0966-227-5157

**BUY NOW**

KDG TOOLS AND EQUIPMENT  
CORPORATION



14427 GOVERNORS DRIVE, BANCAL CARMONA, CAVITE BESIDE WELBORNE ONDUSTRIAL ( GREEN PARKING LOT)

# FITTINGS

## AVAILABLE CONNECTOR

**One Touch Fittings/ Pneumatic Connector, Speed Controller, Air Coupler Socket, Air Nut Coupler, Air Line Coupler, Air Coupler Plug Male/Female, Air Nut Coupler Socket**

### ONE TOUCH FITTINGS/ PNEUMATIC CONNECTOR



One Touch Fittings(PC Type)

One Touch Fittings(PC Type)

One Touch Fittings(PC Type)

3/8"PT x 10mm

3/8"PT x 16mm

3/8"PT x 8mm

3/8"PT x 6mm

1/2"PT x 6mm

1/2"PT x 8mm

1/2"PT x 10mm

1/2"PT x 12mm

1/2"PT x 16mm

1/8"PT x 4mm

1/8"PT x 8mm

1/8"PT x 10mm

1/8"PT x 12mm

1/4"PT x 4mm

1/4"PT x 6mm

1/4"PT x 8mm

1/4"PT x 10mm

1/4"PT x 12mm

3/8"PT x 12mm

### ONE TOUCH FITTINGS/ SPEED CONTROLLER



One Touch Fittings Speed Controller

4-1 1/8 PT

One Touch Fittings Speed Controller

6-1 1/8 PT

One Touch Fittings Speed Controller

8-1 1/8 PT

One Touch Fittings Speed Controller

4-2 1/4 PT

One Touch Fittings Speed Controller

6-2 1/4 PT

One Touch Fittings Speed Controller

8-2 1/4 PT

One Touch Fittings Speed Controller

10-2 1/4 PT

One Touch Fittings Speed Controller

12-2 1/4 PT

One Touch Fittings Speed Controller

6-3 3/8 PT

One Touch Fittings Speed Controller

12-3 3/8 PT

One Touch Fittings Speed Controller

8-4 1/2 PT

One Touch Fittings Speed Controller

10-4 1/2 PT

One Touch Fittings Speed Controller

12-4 1/2 PT

LANDLINE: 046 409 6236  
GLOBE: 0966-227-5158  
VIBER: 0966-227-5157

**BUY NOW**

KDG TOOLS AND EQUIPMENT  
CORPORATION



14427 GOVERNORS DRIVE, BANCAL CARMONA, CAVITE BESIDE WELBORNE ONDUSTRIAL ( GREEN PARKING LOT)

# FITTINGS

## AVAILABLE CONNECTOR

**One Touch Fittings/ Pneumatic Connector, Speed Controller, Air Coupler Socket, Air Nut Coupler, Air Line Coupler, Air Coupler Plug Male/Female, Air Nut Coupler Socket**

### AIR NUT COUPLER PLUG W/SPRING



|                                  |             |
|----------------------------------|-------------|
| Air Nut Coupler Plug w/ Spring   | CNS21 8mmØ  |
| Air Nut Coupler Plug w/ Spring   | CNS23 10mmØ |
| Air Nut Coupler Plug w/ Spring   | CNS24 12mmØ |
| Air Nut Coupler Socket w/ Spring | HNS21 8mm Ø |
| Air Nut Coupler Socket w/ Spring | HNS23 10mmØ |
| Air Nut Coupler Socket w/ Spring | HNS24 12mmØ |

### AIR NUT COUPLER SOCKET W/SPRING



### AIR COUPLER PLUG FEMALE



|                         |              |
|-------------------------|--------------|
| Air Coupler Plug Male   | CM22, PT 1/4 |
| Air Coupler Plug Male   | CM23, PT 3/8 |
| Air Coupler Plug Male   | CM24, PT 1/2 |
| Air Coupler Plug Male   | PM-20 PT 1/4 |
| Air Coupler Plug Male   | PM-30 PT 3/8 |
| Air Coupler Plug Female | CF22, PT 1/4 |
| Air Coupler Plug Female | CF23, PT 3/8 |
| Air Coupler Plug Female | CF24, PT 1/2 |

### AIR COUPLER PLUG MALE



### AIR COUPLER SOCKET FEMALE



|                           |              |
|---------------------------|--------------|
| Air Coupler Socket Male   | HM22, PT 1/4 |
| Air Coupler Socket Male   | HM23, PT 3/8 |
| Air Coupler Socket Female | HF22, PT 1/4 |
| Air Coupler Socket Female | HF23, PT 3/8 |
| Air Coupler Socket Female | HF24, PT 1/2 |
| Air Coupler Socket Female | SF40 PT 1/2  |

### AIR COUPLER SOCKET MALE



### AIR COUPLER SOCKET



|                        |            |
|------------------------|------------|
| Air Coupler Socket     | HH22 8mmØ  |
| Air Coupler Socket     | HH23 10mmØ |
| Air Coupler Socket     | HH24 13mmØ |
| Air Nut Coupler Socket | HN21 8mmØ  |

### AIR NUT COUPLER SOCKET



LANDLINE: 046 409 6236  
GLOBE: 0966-227-5158  
VIBER: 0966-227-5157

**BUY NOW**

KDG TOOLS AND EQUIPMENT CORPORATION



14427 GOVERNORS DRIVE, BANCAL CARMONA, CAVITE BESIDE WELBORNE ONDUSTRIAL ( GREEN PARKING LOT)

YOUR ONE STOP  
INDUSTRIAL SHOP

# DISC & GASKET



kdgtools@gmail.com

FOR MORE MACHINE  
AND PRODUCTS  
MESSAGE US OR  
VISIT OUR SHOP



VISIT NOW

AVAILABLE DISC AND GASKET:

- GRINDING DISC/ GRINDING WHEEL
- STEEL DISC/STEEL CUTTER/CUTTING DISC
- RUBBER GASKET
- FLANGE CUTTED GASKET
- NON ASBESTOS GASKET
- CARBIDE WHEEL
- DIAMOND SAW

LANDLINE: 046 409 6236  
GLOBE: 0966-227-5158  
VIBER: 0966-227-5157

14427 GOVERNORS DRIVE, BANCAL  
CARMONA, CAVITE BESIDE WELBORNE  
INDUSTRIAL ( GREEN PARKING LOT)

# DISC & GASKET

AVAILABLE DISC

**Grinding Disc/Grinding Wheel, Steel Disc/Steel Cutter/Cutting Disc, Rubber Gasket, Flange Cutted Gasket, Non Asbestos Gasket, Cut Off Wheel, Carbide Wheel, Diamond Saw/Cup Blade**



Grinding Disc



Flap Disc / Disc Wheel



Cutting Disc



RUBBER GASKET

FLANGE CUTTED GASKET



Gasket

LANDLINE: 046 409 6236  
GLOBE: 0966-227-5158  
VIBER: 0966-227-5157

**BUY NOW**

KDG TOOLS AND EQUIPMENT CORPORATION



14427 GOVERNORS DRIVE, BANCAL CARMONA, CAVITE BESIDE WELBORNE ONDUSTRIAL ( GREEN PARKING LOT)

# DISC & GASKET

AVAILABLE DISC

**Grinding Disc/Grinding Wheel, Steel Disc/Steel Cutter/Cutting Disc, Rubber Gasket, Flange Cutted Gasket, Non Asbestos Gasket, Cut Off Wheel, Carbide Wheel, Diamond Saw/Cup Blade**



Cut Off Wheel 14"



Diamond Cup Wheel



Diamond Saw Blade Dry Type



Carbide Wheel

LANDLINE: 046 409 6236  
GLOBE: 0966-227-5158  
VIBER: 0966-227-5157

**BUY NOW**

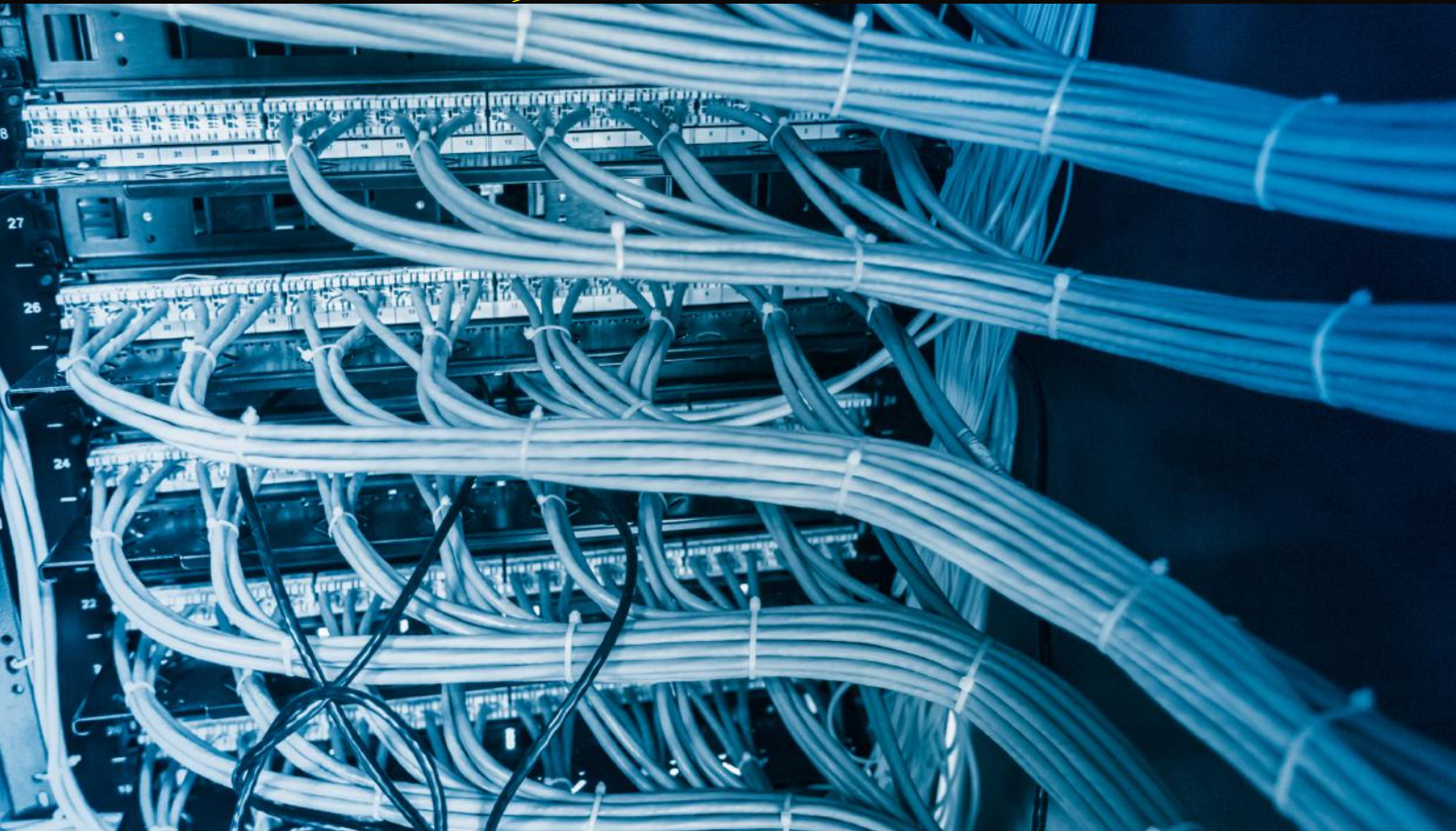
KDG TOOLS AND EQUIPMENT  
CORPORATION



14427 GOVERNORS DRIVE, BANCAL CARMONA, CAVITE BESIDE WELBORNE ONDUSTRIAL ( GREEN PARKING LOT)

YOUR ONE STOP  
INDUSTRIAL SHOP

# CORD, WIRE, CABLE, HOSE



[kdgtools@gmail.com](mailto:kdgtools@gmail.com)

FOR MORE MACHINE  
AND PRODUCTS  
MESSAGE US OR  
VISIT OUR SHOP



VISIT NOW

AVAILABLE CORD, WIRE, CABLE &  
HOSE:

- ROYAL CORD
- AIR HOSE
- WELDING CABLE
- TWIN HOSE

LANDLINE: 046 409 6236  
GLOBE: 0966-227-5158  
VIBER: 0966-227-5157

14427 GOVERNORS DRIVE, BANCAL  
CARMONA, CAVITE BESIDE WELBORNE  
INDUSTRIAL ( GREEN PARKING LOT)

# CORD, WIRE, HOSE, CABLE

AVAILABLE CORD WIRE  
HOSE & CABLE

**Royal Cord, Welding Cable, Twin Hose, Air Hose**



**Royal Cord**



**Welding Cable**



**Twin Hose**



**Air Hose**

LANDLINE: 046 409 6236  
GLOBE: 0966-227-5158  
VIBER: 0966-227-5157

**BUY NOW**

KDG TOOLS AND EQUIPMENT  
CORPORATION



YOUR ONE STOP  
INDUSTRIAL SHOP

# MEASURING TOOLS



[kdgtools@gmail.com](mailto:kdgtools@gmail.com)

FOR MORE MACHINE  
AND PRODUCTS  
MESSAGE US OR  
VISIT OUR SHOP



VISIT NOW

## AVAILABLE MEASURING TOOLS:

- MEASURING TAPE
- LOCKING TAPE
- RUBBER JACKET TAPE
- T-TYPE VIAL
- TRIPOD
- LEVEL BAR
- FIBER GLASS TAPE
- CALIPER - L-SQUARE
- COMPASS

LANDLINE: 046 409 6236  
GLOBE: 0966-227-5158  
VIBER: 0966-227-5157

14427 GOVERNORS DRIVE, BANCAL  
CARMONA, CAVITE BESIDE WELBORNE  
INDUSTRIAL ( GREEN PARKING LOT)

# MEASURING TOOLS

AVAILABLE MEASURING TOOLS

MEASURING TAPE , LOCKING TAPE, T-TYPE VIAL, TRIPOD, LEVEL BAR, FIBER GLASS TAPE, COMBINATION SQUARE, VERNIER CALIPER, L-SQUARE, GAUGE, RULER, COMPASS



Measuring Tape



Measuring Tape



Measuring Tape



Measuring Tape



Measuring Tape



LOCKING TAPE



RUBBER JACKET TAPE



RUBBER JACKET TAPE



RUBBER JACKET TAPE

LANDLINE: 046 409 6236  
GLOBE: 0966-227-5158  
VIBER: 0966-227-5157

**BUY NOW**

KDG TOOLS AND EQUIPMENT CORPORATION



14427 GOVERNORS DRIVE, BANCAL CARMONA, CAVITE BESIDE WELBORNE ONDUSTRIAL ( GREEN PARKING LOT)

# MEASURING TOOLS

AVAILABLE MEASURING TOOLS

MEASURING TAPE , LOCKING TAPE, T-TYPE VIAL, TRIPOD, LEVEL BAR, FIBER GLASS TAPE, COMBINATION SQUARE, VERNIER CALIPER, L-SQUARE, GAUGE, RULER, COMPASS



T-Type Vial



Tripod



Level Bar



Fiber Glass Tape



Fiber Glass Tape



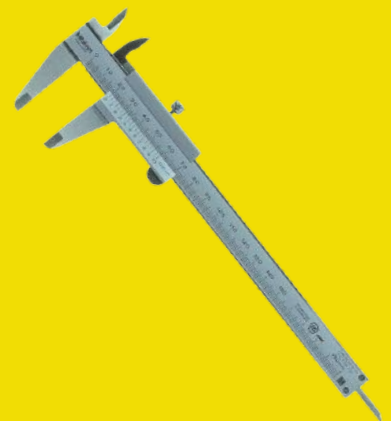
Fiber Glass Tape



Combination Square Metric



Combination Square



Vernier Caliper

LANDLINE: 046 409 6236  
GLOBE: 0966-227-5158  
VIBER: 0966-227-5157

**BUY NOW**

KDG TOOLS AND EQUIPMENT CORPORATION



14427 GOVERNORS DRIVE, BANCAL CARMONA, CAVITE BESIDE WELBORNE ONDUSTRIAL ( GREEN PARKING LOT)

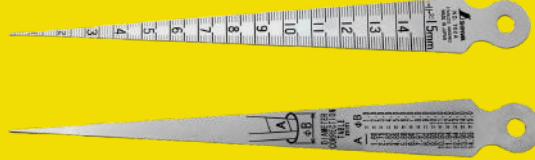
# MEASURING TOOLS

## AVAILABLE MEASURING TOOLS

**MEASURING TAPE , LOCKING TAPE, T-TYPE VIAL, TRIPOD, LEVEL BAR, FIBER GLASS TAPE, COMBINATION SQUARE, VERNIER CALIPER, L-SQUARE, GAUGE, RULER, COMPASS**



**L-Square**



**Taper Gauge**



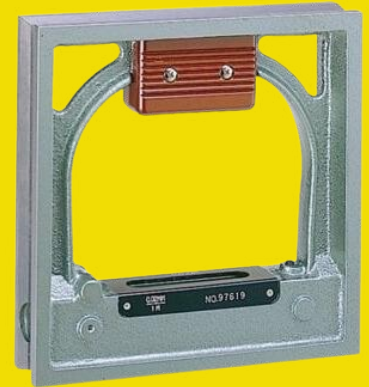
**Thickness Gauge**



**Steel Ruler**



**Spring Divider**



**Precision Square Level**



**Dial Thickness Gauge**



**Outside Compass Caliper**



**Measuring Tape Key Ring Type**

LANDLINE: 046 409 6236  
GLOBE: 0966-227-5158  
VIBER: 0966-227-5157

**BUY NOW**

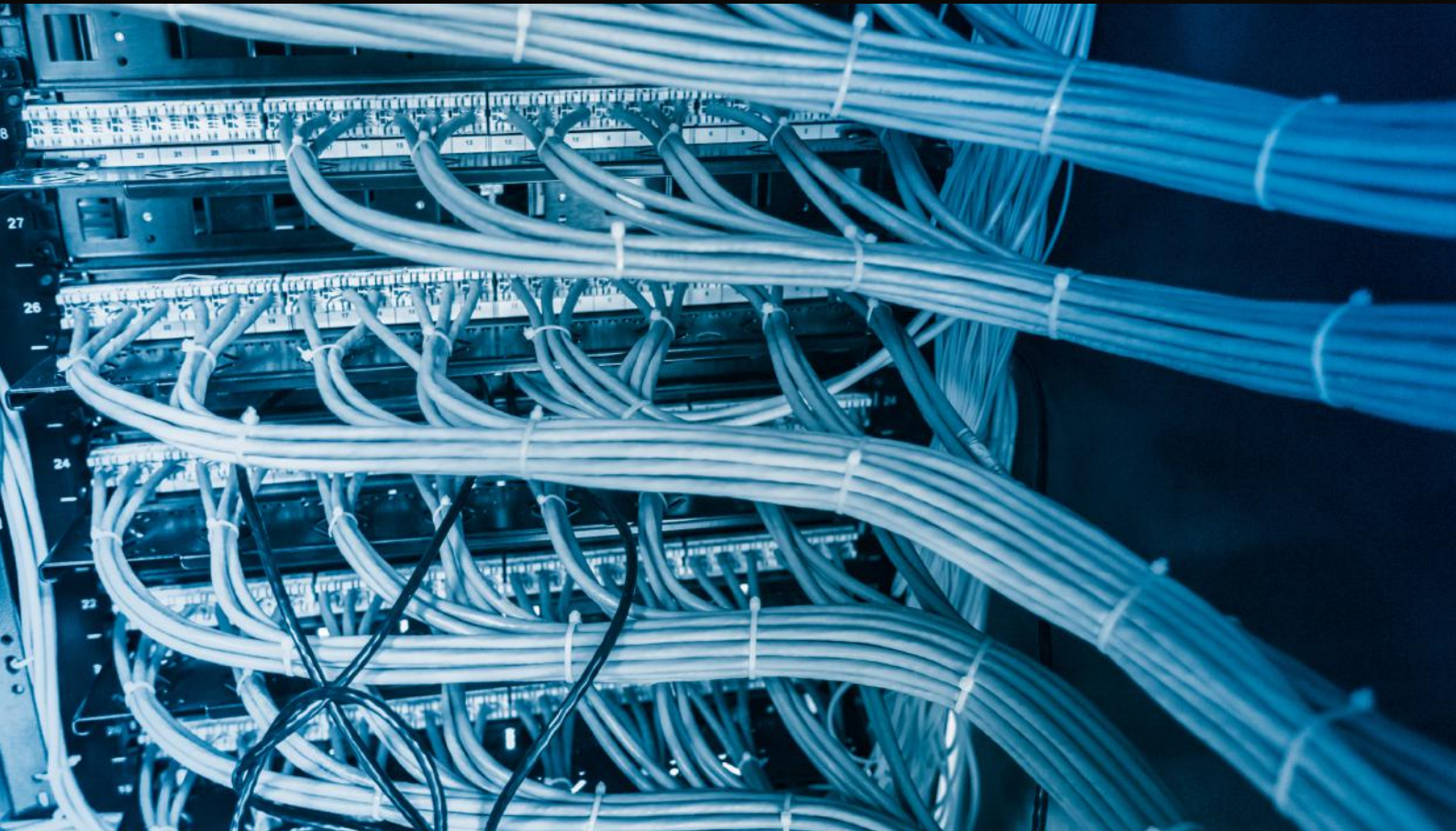
**KDG TOOLS AND EQUIPMENT CORPORATION**



14427 GOVERNORS DRIVE, BANCAL CARMONA, CAVITE BESIDE WELBORNE ONDUSTRIAL ( GREEN PARKING LOT)

YOUR ONE STOP  
INDUSTRIAL SHOP

# LIFTING TOOLS



[kdgtools@gmail.com](mailto:kdgtools@gmail.com)

FOR MORE MACHINE  
AND PRODUCTS  
MESSAGE US OR  
VISIT OUR SHOP



VISIT NOW

## AVAILABLE LIFTING TOOLS:

- P.P ROPE
- SHACKLE
- BEAM CLAMP
- SLING BELT
- TIE DOWN CHAIN
- PRECISION SQUARE LEVEL

LANDLINE: 046 409 6236  
GLOBE: 0966-227-5158  
VIBER: 0966-227-5157

14427 GOVERNORS DRIVE, BANCAL  
CARMONA, CAVITE BESIDE WELBORNE  
INDUSTRIAL ( GREEN PARKING LOT)

# LIFTING TOOLS

AVAILABLE LIFTING TOOLS

**P.P ROPE, SHACKLE, BEAM CLAMP, SLING BELT, TIE DOWN CHAIN, PRECISION SQUARE LEVEL, SAFETY LATCH PIN**



P.P Rope



Shackle



Beam Clamp



Sling Belt



Tie Down Chain



Precision Square Level

LANDLINE: 046 409 6236  
GLOBE: 0966-227-5158  
VIBER: 0966-227-5157

**BUY NOW**

KDG TOOLS AND EQUIPMENT  
CORPORATION



14427 GOVERNORS DRIVE, BANCAL CARMONA, CAVITE BESIDE WELBORNE ONDUSTRIAL ( GREEN PARKING LOT)



# KDG

## TOOLS AND EQUIPMENT CORPORATION

14427 GOVERNORS DRIVE, BANCAL CARMONA,  
CAVITE BESIDE WELBORNE INDUSTRIAL ( GREEN  
PARKING LOT)

LANDLINE: 046 409 623

GLOBE: 0966-227-5158

VIBER: 0966-227-5157

**KDG TOOLS AND EQUIPMENT  
CORPORATION**





# KDG TOOLS AND EQUIPMENT CORPORATION

**YOUR ONE STOP INDUSTRIAL SHOP**



## ARE YOU LOOKING FOR TOOLS AND EQUIPMENT?

### **CONTACT US**

LANDLINE: 046 409 6236  
GLOBE: 0966-227-5158  
kdgtools@gmail.com  
VIBER: 0966-227-5157

### **SHOP NOW**

14427 GOVERNORS  
DRIVE, CARMONA,  
CAVITE Beside Welborne  
Industrial (Green Parking  
Lot)

### **LEARN MORE**

SOCIALS:

LAZADA  
TIKTOK

FACEBOOK  
INSTAGRAM